

# THE Kentucky Kernel

Monday, March 27, 2006

Celebrating 35 years of independence

www.kykernel.com

## Prosecutor downplays loss of evidence

Ky. high court threw out forensic bullet tests in Ragland trial

By Darush Shaif  
THE KENTUCKY KERNEL

Despite losing the ability to use a major piece of evidence in the case, the attorney prosecuting the new trial of the alleged murderer of a former UK football player said he's not that worried.

"We don't think that evidence was much, frankly," said Fayette County Commonwealth Attorney Ray Larson at a press conference Friday.

"We do not believe the jury convicted the defendant on that evidence, but convicted him upon all of the other evidence presented at the trial, including his confession to his former girlfriend that he killed Trent DiGiuro," Larson said.

In a 5-2 decision published March 23, the Kentucky Supreme Court ruled that forensic bullet tests used to connect Ragland to the 1994 murder of UK football player Trent DiGiuro were inadmissible, thus overturning Ragland's 2002 conviction. The decision sent the case back to Fayette Circuit Court for a new trial.

Ragland has been serving a 30-year sentence for the sniper-style killing of DiGiuro, who was shot while sitting on the front porch of his Woodland Avenue apartment in July 1994. Ragland was arrested in 2000 after his ex-girlfriend, Aimee Lloyd, told police he confessed to her in 1986 that he had murdered DiGiuro.

The test, called a comparative bullet lead analysis, had been used by the prosecution to connect bullets found at the murder scene to bullets found in the two homes of Ragland's divorced parents. Prosecutors maintain the tests are sound and they believe conclusions from those tests should be left for jurors to determine.

In September 2006, the FBI, which was the only agency administering the tests, announced it would no longer do so after a National Research Council study showed the test to be inconclusive. In addition, testimony offered by the forensic scientist who performed the tests for the prosecution in this case proved to be false.

"We conclude that the admission of the (bullet analysis) test results and the expert's opinions about those results require reversal for a new trial," wrote Justice William Cooper in the court's majority opinion, one of four opinions written by the court.

Even without the evidence from the bullet tests, Larson said he believes the case against Ragland remains strong.

"We intend to retry this case," Larson said. "We will present all of the evidence to another

See Trial on page 2

## Conference keys in on mental health in blacks

By Cameron Ludwig  
THE KENTUCKY KERNEL

UK's annual Black Women's Conference kicked off yesterday with a potluck dinner and features several keynote speakers throughout the week as it continues to stress the importance of mental health issues among black women.

The UK African American Studies and Research Program, will host conference events Wednesday and Thursday in the Student Center, including a "student town hall meeting," lecture series and panel discussion. The theme for this year's version of the conference, in its 12th year, is "Soul Well: Mental Health Issues Among African American Women."

"We recognize the fact that mental health is an issue among African American women, and sometimes is an issue that goes unaddressed," said Sonja Feist-Price, the conference chairwoman and associate professor in the College of Education. "The conference provides an opportunity for us to attend to the issues that are important to us."

Keisha Love, a member of Wednesday evening's town hall meeting, said the mental health of black students is a concern for her.

"For too many students, particularly African American students, do not seek treatment for mental health concerns," said Love, an assistant professor in UK's Department of Educational and Counseling Psychology.

The town meeting will include three psychology professionals who will field questions from students about issues such as depression, anxiety, homesickness, relationship issues, suicide and stress. Love hopes that the town meeting will

See Conference on page 2

## 'Incredible passion' defines new WRFL leader

By Megan Boehnke  
THE KENTUCKY KERNEL

UK's student-run radio station, 88.1 WRFL-FM, selected its general manager for next school year on Friday.

Greg Tilton, a political science junior, was selected by a five-member committee to take over the position. He's been involved with the station for two years.

"He displayed an incredible passion for the station," faculty adviser John F. Clark said of Tilton. "It's something I could recognize in him."

The committee included three outgoing directors, one

staff member and one member from another student organization. Clark, along with current General Manager John Edwards and University Adviser Chris Thuringer sat in on the committee, but did not vote.

The general manager is responsible for setting and maintaining the station's budget, managing more than 100 staff members, dealing with conflicts, maintaining Federal Communications Commission regulations and other duties, said Edwards.

"I was very humbled and excited," Tilton said of his initial reaction. "Everyone tries to leave their mark as general manager. I want to figure out what I

can do to keep WRFL progressive and vital on campus and in the community."

Clark described Tilton as level-headed, hardworking and full of good ideas, including getting staff members more involved in duties of the directors at the station.

Not only does it help alleviate some of the burden for the directors, he said, but it also helps staff members learn more about the station and its structure.

"It would provide us with



"College radio is something I wanted to do long before I came to college."

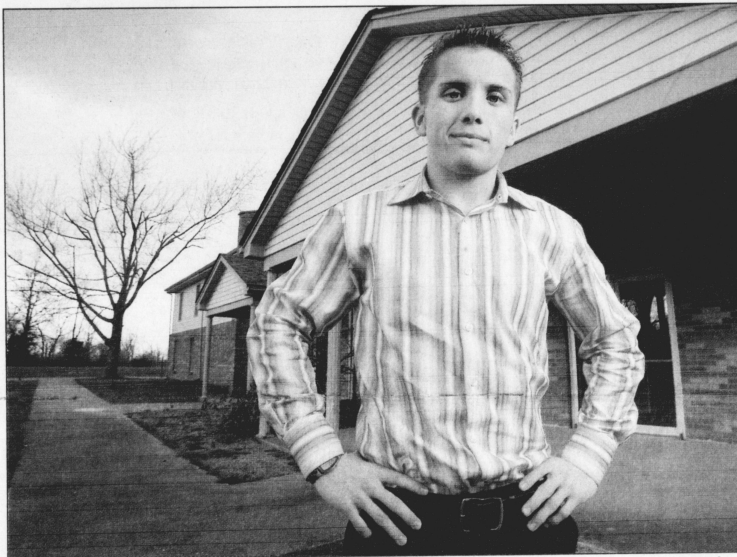
Greg Tilton  
general manager, WRFL-FM radio, 2006-07

good talent for making future director decisions."

Tilton, who is currently the director of CD Library, has recently implemented a new organization system for the CDs that

See WRFL on page 2

## Raising his voice, and a church



KEITH SMILEY | STAFF

Psychology junior Derek Stephens stands outside the Word of Life Christian Center, a new church that Stephens is helping found on Swigert Lane in Lexington.

### Student recovers from brain surgery, regains singing voice

By Farra Franklin  
THE KENTUCKY KERNEL

For seven years, the showerhead and car radio were the only audience who go to hear Derek Stephens sing.

But it took a brain tumor and encouragement from a mentor for the psychology junior to finally stand alone in front of an audience and belt out gospel tunes.

Stephens was 18 when he had two seizures in June 2003. A tumor was press-

ing against his brain.

"I was shocked to hear the news. You don't think it's going to happen to you, but I was like, 'OK' and took the news," Stephens said.

Despite his push for urgency, the ordeal took longer than Stephens had hoped.

After two unsuccessful surgeries as a result of the seizures, Stephens became the first patient to have a craniotomy while awake at Saint Joseph Hospital in May 2005. Stephens sat on the operating table staring at a screen displaying his vital signs while the surgeon scraped the tumor out. Though the surgery removed half of the tumor, it took his singing ability

with it.

"While scraping out my tumor, my speech cortex was hit and everything that came out of my mouth was a mumble," he said.

Once Stephens came out of surgery without the voice he once had, he realized what he was missing.

"The loss of my fine motor skills took away my singing voice, and I realized I was not using my God-given talent the way that I should have been," he said.

Stephens spent the next six weeks doing radiation treatments and the rest of that summer in speech therapy.

See Singer on page 2

... I realized I was not using my God-given talent the way I should have been."

— Derek Stephens, psychology junior, on how the damage to his speech cortex affected him.

## Maligned ex-FEMA chief to face satire of Hurricane Colbert

By Mattea Gold  
LOS ANGELES TIMES

NEW YORK — Michael D. Brown, former director of the Federal Emergency Management Agency, is tired of being caricatured as an incompetent government appointee who stood by while the Gulf Coast was devastated by Hurricane Katrina.

During an appearance before a Senate committee last month, Brown refused to accept all the blame for the government's slow response, insisting that he had warned the White House of the storm's disastrous potential.

Now he's embarking on the next step of his rehabilitation tour: He's going on "The Colbert Report."

Tomorrow, Brown is scheduled to sit down with Stephen Colbert — who plays the bombastic, preening cable anchor on Comedy Central's 11:30 p.m. mock newscast — for an unpredictable interview in which the only thing the former federal official can count on

is the likelihood of being embarrassed.

Why, after months of being fodder for late-night television comedians, is he willing to subject himself to such a public ordeal?

Brown admits that he had never heard of "The Colbert Report" until he was invited to be a guest. But after watching several episodes, he says, "I think I know what I'm in for."

"It's not mean-spirited humor, it's just good satire," Brown said in an interview last week. "I go in with my eyes open that they will do whatever they can to make fun of me. But I hope people see I'm human and a decent guy."

Nowadays, the real test for a public figure, especially with an image to mend, is to endure a heavy dose of ridicule at the hands of Colbert, whose parody of a pompous television pundit has attracted an impressive lineup of guests since the show premiered in October.

With an average of 1.1 million viewers a night, the program gets solid if not spectacular ratings for a late-night cable show. But 40 percent of its audience is in the coveted 18-

34-year-old age group, which means that "The Colbert Report" — like its lead-in, "The Daily Show With Jon Stewart," from which it was spun off — offers media figures and politicians valuable airtime in front of young viewers, even if they risk looking silly.

Of course, offering oneself up as Colbert's target is not a risk-free enterprise. Bristol at his hearing and you look like a bad sport. Crack jokes, and it can seem like you're trying too hard.

Brown said his friends and family had had two reactions to his decision to go on the program: "Either, 'That's so cool,' or, 'Oh my God,' their head in their hands."

The former FEMA director said he hoped to hold his own. Although "not a comedian by any stretch," Brown said he does have an ability to jest — a fact he said was lost on critics who assailed him for e-mailing his aides about his wardrobe before the storm.

"I do not believe I'm a 'fashion god,'" Brown said. "That was my dry sense of humor."

## WRFL

Continued from page 1

the station has accumulated over the last 18 years, a big undertaking, Clark said. "You can always ask for volunteers," said Tilton. "But it would help to have a pool of people to contact for help."

Tilton became a DJ with the station his sophomore year and a director this year, but has been interested in radio longer than that.

"College radio is something I wanted to do long before I came to college," he said. "When I came on my visits here, I visited WRFL."

Clark said that's an attribute that impressed him.

"That doesn't happen very often," Clark said of Tilton's high school visits. "He had (radio) in mind right from the start. It displays a lot of desire. Most people don't discover (WRFL) until they get here."

Originally four students applied for the position, but two dropped out for different reasons. Tilton was selected over Jessica Suhr, an architecture senior, who has been involved with the station for one year.

"She's a very devoted member of the organization and also had many fine qualities," Clark said. "She's definitely committed to WRFL."

Suhr said she plans to continue working at WRFL over the summer before moving to attend graduate school at the University of Louisville.

"I hope he'll be able to make WRFL more community and campus oriented station and even more diverse than it already is," she said of Tilton, adding that he was a good candidate for the position. "He's very thoughtful and well organized."

E-mail mboehnke@kykernel.com

## Larson

Continued from page 1

jury, we will ask the jury to find him guilty and we will ask them to sentence the defendant to the maximum sentence permissible by law — life (in prison)."

The bullet lead analysis was the only piece of evidence ruled inadmissible by the court and all other evidence is still usable for the trial, Larson said.

While Ragland's attorney, Guthrie True, has said he would file for a change of venue to move the trial away from Lexington, Larson said his office would try the case wherever the judge orders it. He also said he opposes bonding Ragland, which would allow him to be released on his own recognizance.

E-mail dshafa@kykernel.com

## Church

Continued from page 1

He still continues the treatments he began after his surgery. It does not include intravenous medication, but oral medication. Stephens takes dosages of chemotherapy in capsule form at night.

"I didn't ever think I would sing again, but it didn't depress me as much as I didn't think anyone would actually hear a talent I kept hidden away for a long time," Stephens said. "The fine motor skills of my mouth and the part of the throat that I spoke from were affected but not ruined completely."

During the treatments of chemotherapy and radiation, Stephens met Jody Quintana. She and her husband, Raymond, were purchasing the Stephens' house at the time.

Quintana told Stephens that she was helping her husband, a pastor, organize the Word of Life Christian Center. Intrigued, Stephens attended their first-ever church service.

"The pastor's wife mentioned that they had bought a building that they were turning into a church," Stephens said. "I was unaware that I was to be the first congregation member of the newly formed Word of Life Christian Center in Lexington."

It was that very night that Stephens, driving home from the service, started singing along in the car the way he used to. He subconsciously sang along until he suddenly he realized what was happening and that his voice had returned.

"I decided that there's a divine reason why I had gotten my voice back and I decided that I needed to share it with the world, but I also wasn't going to hide my talent any longer, so I decided whenever I got in the car in the future to belt out songs from then on extremely loudly," Stephens said.

When music director Natalie Dunston offered Stephens the position of lead singer at the church, his confidence soared.

"When I watched the DVD (of the Word of Life Christian Center in Denver) and heard about the church's values from my

friend Natalie Gutierrez, who is a member of the church as well, of what their articles of faith were, the church tugged on my heart and I felt compelled to get involved with this opportunity," Stephens said.

Lexington's Word of Life Christian Center has about 12 members.

"The church is going exceptionally well for not even having the kick-off service on April 2," Stephens said. "We have a lot of students from Asbury College as well as UK students coming that are searching for spiritual guidance while in college."

Early in his college career, Stephens himself partied and drank almost every weekend, but he said he's moved on from that stage. Since becoming involved with Word of Life, he has found little time and little interest in partying.

"I didn't feel that I was on the right track at the time that I was drinking and partying; it was more of a social activity for me than anything else," Stephens said. "Developing a true relationship with God made me focus more on immersing myself within this church and my duties within it instead of continuing a life of partying."

Stephens has shared his story with other members and is helping to begin programs such as college career counseling and is helping the church's growing youth department. Raymond Quintana sees a noticeable difference in Stephens now than before.

"What Derek has went through has increased his faith level, and now Derek knows that there are no mountains or barriers ..."

Stephens knows that there are no mountains or barriers to keep him from sharing his story with others, whether it is with song or through helping other congregation members in the church," Quintana said.

As Stephens shares his story, he's inspired by the others who worship alongside him.

"Through Word of Life Christian Center, I have developed spiritual friendships that have been such an influence on my life," Stephens said. "My experience through my surgeries has taught me to hold true to God because I know that he is by my side no matter what the circumstance may be."

E-mail news@kykernel.com

## Conference

Continued from page 1

bring awareness to these issues to students.

"Bringing these issues to the forefront will hopefully encourage those who need help to seek it, and those who are mentally healthy to remain healthy," she said in an e-mail.

She hopes that the conference will help alleviate stereotypes and help give information to students on topics not usually discussed.

"When most people think of mental health or mental illness, they automatically think of someone with severe psychosis or someone who is crazy," she said.

"Many times things such as depression, anxiety, and/or relationship concerns are subtle, but bothersome issues that sometimes go overlooked. We want students to be able to identify when they might need to seek assistance for their concerns and also give them some pointers to engage in preventative mental health practices."

The African American Studies and Research program began the conference in 1965 as part of Women's History Month, and aims to address issues affecting black women. Each year, prominent members of the black community at UK, in Lexington and around the nation are invited to take part in promoting dialogue about current issues facing black women, according to the event's Web site.

"We provide a forum where we can talk about day to day issues, our strengths as women and our challenges," Feist-Price said.

All students and members of the community are invited to attend and participate in the events.

E-mail news@kykernel.com

### Conference Events

#### WEDNESDAY

- STUDENT TOWN MEETING  
6:30 p.m. to 8:30 p.m., Student Center room 206

#### THURSDAY

- 10 a.m., Center Theater (Student Center)  
Keynote speaker: Dr. Linda James Myers  
"Realizing the God/dess Within: Weight Training for the Heart, Mind and Soul from She-Who-Has-No-Name-To-You"
- Noon, Student Center Grand Ballroom  
Luncheon and lecture featuring keynote speaker Dr. Lynda Brown Wright and her speech, "Life Ain't Been No Crystal Stair: Strengths, Challenges and Mental Well-Being of Black Women"  
Tickets are \$15
- 2:30 p.m., Center Theater (Student Center)  
Panel discussion
- 5 p.m., Center Theater (Student Center)  
Keynote speaker: Dr. Kumea Shorter-Gooden and her talk, "The Making of Sisterella: How Racial and Gender Bias Impact Depression in Black Women"

UNIVERSAL  
presents a special advance screening

FROM THE DIRECTOR OF 'ABOUT A BOY,' 'IN GOOD COMPANY' AND 'AMERICAN PIE.'

HUGH GRANT  
DENNIS QUaid  
MANDY MOORE  
MARCIA GAY HARDEN  
CHRIS KLEIN  
JENNIFER COOLIDGE  
and WILLEM DAFDE

Everyone's gotta have...

**American Dreamz**

OPENS APRIL 21

DATE: WEDNESDAY, MARCH 29, 2006 KY002  
TIME: 8:00 PM  
LOCATION: WORSHAM THEATER  
TICKETS AVAILABLE AT: STUDENT CENTER TICKET OFFICE, STUDENT CENTER ROOM 203

ARRIVE EARLY! SEATING IS FIRST COME, FIRST SERVED!

**NEED \$\$\$?**

**Earn Money For Your Student Organization!**

EARN \$10/HOUR FOR YOUR STUDENT ORGANIZATION BY WORKING THE ELECTION POLLS

CONTACT THE SG OFFICE TODAY!

**Student Government**  
UNIVERSITY OF KENTUCKY

**DON'T FORGET**

STUDENT GOVERNMENT ELECTIONS ARE COMING UP!

WEDNESDAY, MARCH 29  
THURSDAY, MARCH 30

Student Government Office  
Room 120 Student Center • 257-3191

## UK Opera showcases 'Carousel'

By Joe Hall  
THE KENTUCKY KERNEL

"Oh, Miss Pipperidge, I'm just crazy for you! Why, just to see your lovely smile I'd swim through beer with my mouth closed!"

So says Jigger Craigin to Carrie Pipperidge in "Carousel," a Rodgers and Hammerstein musical that the UK Opera Theatre will perform downtown at the Lexington Opera House beginning Friday.

"Carousel" is the second of several award-winning musicals on which composer Richard Rodgers and lyricist Oscar Hammerstein II collaborated. The first, "Oklahoma!" won a Pulitzer Prize and is recognized by many critics for revolutionizing American musical theater with its fusion of music and dance into plot.

Some critics, however, believe "Carousel" digs deeper into character and encompasses more of humanity than "Oklahoma!" Set in late 19th century New England, it tells the story of mill worker Julie Jordan's marriage to carnival barker Billy Bigelow.

"Julie is very, very strong, yet she's a little naive and reserved," said Colleen Lauve, a second-year master's student in vocal performance who sings and plays Jordan's role. "She's not afraid to tell people what she thinks, but she's terrified of being alone."

Lauve first saw and heard "Carousel" two years ago. "I thought it was a total downer," she said. "But the music is beautiful. I think it's one of the best Rodgers and Hammerstein shows there is."

As Lauve suggests, "Carousel" is not a characteristic musical. Although it has its share of hopeful, upbeat songs, "Carousel" also has tragic overtones that most musicals avoid.

"It's uncharacteristic Rodgers and Hammerstein because it's serious," Lauve said. "A lot of Rodgers and Hammerstein is really upbeat. 'Carousel' is darker and more operatic."

Musical education senior Mark Benz, who sings and plays Jordan's husband, Billy Bigelow, also had a gloomy first impression of "Carousel." He played a minor role in his high school's rendition and found the musical a bit depressing.

"But if you think about it, it's uplifting and has a good moral to it," Benz said. "It's a very serious show, one of the deepest that Rodgers and Hammerstein did together. It's not appropriate for small children or anything, but it's a very good story."

Most of the musical's despairing elements stem from Billy Bigelow's inability to express his love for his wife and unborn child. He is emotionally handcuffed, a phenomenon that haunts men everywhere and creates a broad range of human connection to the musical.

"Billy is very confused," Benz said. "He comes off as proud, almost pompous. He goes through a lot emotional turmoil inside and he doesn't know how to deal with it."

Countering Jordan and Bigelow's marital struggles is the blissful union between Carrie Pipperidge and Enoch Snow. Pipperidge is a strong character, she's faithful to her husband (she dismisses Jigger Craigin's beer-soaked seductions) but undaunted by him. The power Pipperidge holds in her marriage sharply contrasts Jordan's weakness.

"Julie just kind of lets Billy walk all over her, but Carrie is very much in charge of her relationship with Mr. Snow," said Jamie Tennant, a recent UK vocal performance graduate who plays Carrie Pipperidge.

In addition to the complexity of character that "Carousel" achieves, the musical delivers several memorable songs that will move audiences — sometimes tugging them toward sadness and despair, while pushing them toward elation and hope at others.

Perhaps best known is "You'll Never Walk Alone," a song about courage and hope that has been recorded by countless artists since Rodgers and Hammerstein wrote it for "Carousel."

Although a few songs stand out, the entire score of "Carousel" has a way of staying with you.

"Some musicals you walk away maybe you have one song stuck in your head or maybe you don't have any songs stuck in your head," Tennant said. "When you walk out of 'Carousel,' there are several that will keep you humming even days later."

E-mail  
features@kykernel.com

### If You Go

"Carousel," presented by the UK Opera Theatre

- 7:30 p.m. March 31 and April 1, 2, 7, 8
- All performances held at Lexington Opera House on 401 W. Short St.
- For tickets, call the Singletary Center at 257-4929

## Latest 'Elder Scrolls' installment will have you gaming into 'oblivion'

By Ian Conley  
THE KENTUCKY KERNEL

Your humble reviewer hates videogames, particularly those of the fantasy-adventure variety: The Kernel rarely, if ever, reviews video games. However, "Elder Scrolls IV: Oblivion" is the video game. Yes, it follows the same paradigm of every role-playing game that has ever been produced. Indeed, "dungeon crawling," or going deep into terrible caves full of horrible creatures in search of magnificent treasures, is certainly a part of the game, but not all of it. Not even close.

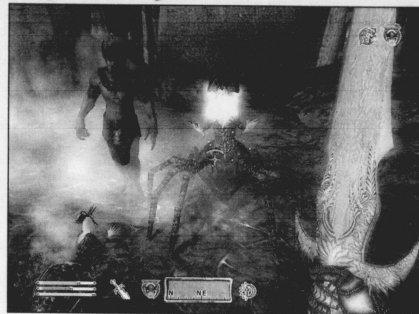
There is no guidance in this; you're thrown into a world that you make your own. An adventure? Done. A sneak-by-night assassin game? Sure. Doing nothing but enjoying the scenery? Fine, whatever. Want to steal a ton of cheap wine and sit around on the river bank? Right on. It's your own world.

Whatever line of existence you plan to take, expect 150-plus hours of play. In fact, expect more than that, because even if you complete one storyline, there are, literally, a hundred more waiting for you.

The latest in the "Elder Scrolls" series of games produced by Bethesda Softworks, "Oblivion" is very much the developer's ultimate opus. The world in which you partake is one rich in the texture of life; rooms are littered with bottles, glasses and clothes, the forests are full of deer, fungi and rats. And every aforementioned element is perfectly capable of being manipulated, stolen and killed.

To play "Oblivion" is to enter a new plane of existence. You know, it's that feeling you get in the back of your skull when the neurons in your brain melt into the cathode rays beaming into your eyes. It's a feeling so intense that you accept the screen as reality. Time blends into nothingness as a great and terrible abyss of fun sucks it all up while you sit on your lazy butt, immersed in a completely different world.

Everything in the game is done in first-person perspective, just like every first-person shooter you've ever played. But in "Oblivion" you're riding horses across vast landscapes, swashbuckling with dastardly demons and shooting arrows from dark corners at helpless victims who lie asleep in bed (yes,



SCREENSHOTS OF 'ELDER SCROLLS IV: OBLIVION'

you can just wantonly murder people. Sociopaths are going to love this game, but, one hopes, they won't be inspired).

But just like any piece of art, "Oblivion" has its problems.

The dialogue is a bit sketchy. Characters seem to patch together different pieces of dialogue in the interest of being refreshingly new, but it just comes off as ridiculous, not unlike the recent South Park episode featuring chopped Isaac Hayes vocals.

Further, the requirements for playing "Oblivion" on a PC are ridiculous. Seriously, kids; you're going to need a home loan to pay for a computer that can run this at

full throttle. Fortunately for us poor college students, a version of the recently released, albeit hard-to-find, Xbox 360 system was published simultaneously with the PC version.

Even if you hate video games and loathe the idea of spending hours upon hours in front of a screen, once you touch "Oblivion," any hope of achieving the Dean's List is out the window; your free time is thrown into oblivion both literally and figuratively. While it might be more productive than smoking crack cocaine, it's presumably just as addictive.

E-mail  
iconley@kykernel.com

## FEATURES BRIEFS

### Beaux Arts Ball

Get out that ugly suit and those uncomfortable dancing shoes. Dust off the wig that's been on the shelf for the last year. It's party time, Lexington.

The 50th annual Beaux Arts Ball is rocking the proverbial house this Saturday at Tattersalls on 847 S. Broadway. Musical performances by Sexual Disasters Quartet and ISWHAT? will be punctuated by a fashion show and various DJs.

The Beaux Arts Foundation, the producing organization of the ball, is sending all of its proceeds to the Lexington Community Action Council.

Tickets are available for \$20 in advance at the following locations:

- CD Central

- Third Street Stuff
- Pride Center
- General Eccentric
- The Kentucky Theater
- Pence Hall
- Via Paypal at <http://www.beaux-arts-ball.org>

All tickets purchased at Pence Hall between 10 a.m. and 4 p.m. will come with a complimentary T-shirt from last year's ball. Tickets are \$30 at the door. Stay tuned for an in depth preview of the event on Friday.

### Girl Wrestler

The UK Women's Studies Spring film series will be presenting "Girl Wrestler" tonight at the Gaines Cen-

ter's Bingham-Davis House at 218 E. Maxwell St.

The film follows the trials and tribulations of 13-year-old Tara Neal who insists that boys and girls should be able to competitively wrestle together. Without the change, Neal's ability to wrestle is essentially null and void. "Girl Wrestler" offers a challenge to social mores and opens the door to debate on Title IX policies.

The screening is free and open to the public.

Compiled by Asst. Features Editor  
Ian Conley  
E-mail iconley@kykernel.com

## Office of Student Activities, Leadership & Involvement

WWW.UKY.EDU/CAMPUSCALENDAR VISIT THE WEB SITE FOR EVENT DETAILS OR TO POST YOUR OWN UK EVENT.

Monday 27 <sup>th</sup>	Tuesday 28 <sup>th</sup>	Wednesday 29 <sup>th</sup>	Thursday 30 <sup>th</sup>	Friday 31 <sup>st</sup>	Saturday 1 <sup>st</sup>
<ul style="list-style-type: none"> <li>• Internship Information Sessions, 2:00 PM, 408 Rose St</li> <li>• KARAOKE, 7:00 PM, Student Center Cat's Den</li> <li>• Feminist Alliance Meeting, 7:30 PM, Gaines Center for the Humanities 232 E. Maxwell St.</li> <li>• James W. Stuckert Career Center Drop-In Hours, 3:00 PM, James W. Stuckert Career Center 408 Rose Street</li> <li>• Solar Car Team Meeting, 5:00 PM, DVT Engineering Building</li> </ul>	<ul style="list-style-type: none"> <li>• Cheap Seat Tuesdays presents The Family Stone, 8:00 PM, Worship Theatre</li> <li>• BINGO!, 7:00 PM, STUDENT CENTER CATS DEN</li> <li>• "Karyotes: The Myths and Mutations of Third World Feminism, 4:00 PM, Young Library Auditorium</li> <li>• Fencing Club Practice, 8:00 PM, Buell Armory</li> <li>• Alpha Phi Omega Active Meeting, 7:30 PM, Student Center, Room 359</li> <li>• Reformed University Fellowship (RUF), 7:30 PM, student center rm. 357</li> <li>• Kentucky Harvest "One Day, One Dollar," Campaign, 11:00 AM, Student Center Patio</li> <li>• College Democrats Weekly Meeting, 7:30 PM, Rm. 211 Student Center</li> </ul>	<ul style="list-style-type: none"> <li>• James W. Stuckert Career Center Drop-In Hours, 3:00 PM, James W. Stuckert Career Center 408 Rose Street</li> <li>• Comedy Caravan, 8:00 PM, Student Center Cats Den</li> <li>• Take Back the Night 2006, 6:00 PM, in front of Memorial Coliseum</li> </ul>	<ul style="list-style-type: none"> <li>• Reformed University Fellowship (RUF), 7:30 PM, student center rm. 357</li> <li>• Fencing Club Practice, 8:00 PM, Buell Armory</li> <li>• Phi Alpha Delta (pre-law) meeting, 6:00 PM, Student Center Room 245</li> <li>• American History X, 10:00 PM, Center Theater in the Student Center</li> <li>• Tony Rice &amp; Peter Rowan in Concert, 7:30 PM, Singletary Center for the Arts</li> <li>• Employer Panel: Jobs in Pharmaceuticals and Medical Supplies (Pre-registration is required), 3:30 PM, 408 Rose St</li> <li>• Our Drug Laws — the Solution or the Problem?, 7:00 PM, Room A, Lexington Public Library, Downtown</li> <li>• RSA General Assembly Meetings, 5:30 PM, 359 Student Center</li> </ul>	<ul style="list-style-type: none"> <li>• James W. Stuckert Career Center Drop-In Hours, 3:00 PM, James W. Stuckert Career Center 408 Rose Street</li> <li>• Poetry Reading, 7:30 PM, 230 Student Center</li> <li>• ICF Free Dinner and Fellowship, 7:00 PM, CSF Building (across from Cooperstown Apt.)</li> <li>• A Night at the Opera, 10:00 PM, Worship Theatre in the Student Center</li> </ul>	<p>Only 5 Weeks Until Summer!</p> <p>Sunday 2<sup>nd</sup></p> <ul style="list-style-type: none"> <li>• UKUFO, 10:00 PM, Seaton Field</li> </ul>

# U.S. plans lunar 'base' as prep for Mars missions

By Guy Gugliotta  
THE WASHINGTON POST

HOUSTON — For the first time since 1972, the United States is planning to fly to the moon, but instead of a quick, Apollo-like visit, astronauts intend to build a permanent base and live there while they prepare what may be the most ambitious undertaking in history — putting human beings on Mars.

President Bush in 2004 announced to great fanfare plans to build a new spaceship, get back to the moon by 2020 and travel on to Mars after that. But, with NASA focused on designing a new spaceship and spending about 40 percent of its budget on the troubled space shuttle and international space station programs, that timetable may suffer.

Still, NASA's moon planners are closely following the spaceship initiative and, within six months, will outline what they need from the new vehicle to enable astronauts to explore the lunar surface.

"It's deep in the future before we go there," said architect Larry Toups, head of habitation systems for NASA's Advanced Projects Office. "But it's like going on a camping trip and buying a new car. You want to make sure you have a trailer hitch if you need it."

Scientists and engineers are hard at work studying technologies that don't yet exist and puzzling over questions such as how to handle the psychological stress of moon settlement, how to build lunar bulldozers and how to reacquire what planetary scientist Christopher McKay of NASA's Ames Research Center calls "our culture of exploration."

The moon is not for the faint of heart. It is a lethal place, without atmosphere, pelted constantly by cosmic rays and micrometeorites, plagued by temperature swings of hundreds of degrees, and swathed in a blanket of dust that can ruin space suits, pollute the air supply and bring machinery to a screeching halt.

And that says nothing about the imponderables. Will working in one-sixth of Earth's gravity for a year cause crippling health problems? What happens when someone suffers from a traumatic injury that can't be treated by fellow astronauts? How do people react to living in a tiny space under dangerous conditions for six months? It's like Magellan. You send them off, and maybe they come back, maybe they don't," said planetary scientist Wendell Mendell, manager of NASA's Office for Human Exploration Science, during an interview at the recently concluded Lunar and Planetary Science Conference here.

"There's a lot of pathologies that show up, and there's nobody in the Yellow Pages," the moon will be harder than Mars. Moon dust is much more abrasive than Mars dust; Mars has atmosphere; Mars has more gravity (one-third of Earth's); Mars has plenty of ice for a potential water supply while the moon may have some, but probably not very much.

Still, the moon is ultimately much more forgiving because it is much closer — 250,000 miles away, while Mars is 34 million miles from Earth at its closest point. If someone needs help on the moon, it takes three days to get there. By contrast, Mars will be several months away even with the help of advanced — and as yet nonexistent — propulsion systems.

Not having to pay as dearly for mistakes is one key reason why the moon is an integral part of the Bush initiative. The other, as even scientists point out, is that if the United States does not return to the moon, others will. "The new thing is China, and they've announced they're going to the moon. The Europeans want to go, the Russians want to go, and if we don't go, maybe they'll go with the Chinese," Mars Institute Chairman Pascal Lee said in an interview. "Could we bypass the moon and go to Mars while India and China are going to the

moon? I don't think so."

Bush's 2004 "Vision for Space Exploration," by calling for a lunar return and a subsequent Mars mission, set goals which, if achieved, would keep the United States in the forefront of space exploration for decades.

Since then, mishaps and delays with the space shuttle and the space station programs have shrunk both the moon research budget and the rhetoric promoting the mission.

Instead, NASA Administrator Michael Griffin has focused agency attention and resources on the design and construction of a new "crew exploration vehicle" and its attendant rocketry — the spacecraft that will push U.S. astronauts once again beyond low Earth orbit.

Despite the moon's current low profile, however, NASA continues to plan a lunar mission and to promote the technological advances needed to achieve it. Toups, one of the moon program's designers, said NASA envisions that a lunar presence, once achieved, will begin with two-to-four years of "sorties" to "targeted areas."

These early forays will resemble the six Apollo lunar missions, which ended in 1972. "You have four crew for seven to 10 days," Toups said in a telephone interview. "Then, if you found a site of particular interest, you would want to set up a permanent outpost there."

The south pole is currently the top target. It is a craggy and difficult area, but it is also the likeliest part of the lunar surface to have both permanent sunlight, for electric power, and ice, although many scientists have questions about how much ice there is. Without enough water, mission planners might pick a gentler landscape.

"There's got to be a lot more autonomy, so we keep it simple," McKay said. "We're going to be on Mars for a long time, and we have to use the moon to think in those terms."

**FREE EVENTS AT YOUR STUDENT CENTER**  
SPONSORED BY THE STUDENT CENTER DIRECTOR'S OFFICE

---

### TV JUMBLE

by David L. Hoyt

Use the clues to help unscramble the TV Jumbles. Use letter to each square. Write the words.

10-0-05

RTDIH Clue: Post position

EZOINF Clue: Cool sitcom character

DEIGBSR Clue: Nesh's connections

NBGERIAK Clue: Type of news

Answer: \_\_\_\_\_

Answers to 10/05: Jumble: MAKEUP GLITTER. SENFELD. REHEARSE. Bonus: The show, which will last some time, is Europe's, got its big break when he landed a role on a sitcom created by James L. Brooks. You can e-mail David L. Hoyt at dhoyt@aol.com. TED KOSOVE © 2005 Student Center Director's Office

## KARAOKE

I WANT TO SEE YOU AT KARAOKE

sing  
dance  
party  
eat

**TONIGHT 7:00**  
In the Cat's Den

## More than one way to earn credit at UK

Take pride in receiving a quality education from Kentucky's flagship university at YOUR own pace and on YOUR schedule.

- Correspondence
- Evening/Weekend
- Online
- Summer

**Adult Student Services**  
211 Funkhouser Building  
University of Kentucky  
Lexington, KY 40506-0054  
(859)257-3802  
(800)432-0963, ext. 7-3802  
[www.uky.edu/adultss](http://www.uky.edu/adultss)

**UK** UNIVERSITY OF KENTUCKY An Equal Opportunity University

## SEARCHING FOR RENTALS?

Search millions of apartments, condos, townhomes, and houses for rent at:

[www.kykernel.com/register](http://www.kykernel.com/register)

Serving Lexington for over 100 years!

# OUTDOOR AND SKI PHILLIP GALL'S

Your Outdoor Adventure Headquarters!

**THE NEW SPRING STYLES HAVE ARRIVED!**

**REEF**  
Men's & Women's "Farming" features a built-in bottle opener in the sole.

**HOLEY**  
Lots of colors in stock to choose from!

**Maui Jim**  
Titanium Elite™ Sunglasses. Redefining lightweight style with Maui Jim's new Maui Evolution™ lens technology—proving simplicity can be stunning.

**Chaco**  
Men's & Women's "ZK2"

"Windward"

**KAENON**  
"Rhino" The best in optical clarity in men's and women's styles.

"Georgia"

**MISSION PLAYGROUND**  
Large selection of tees now in stock for spring!

**1555 New Circle Road East**  
**859-266-0469**  
(Woodhill Circle Plaza next to Office Depot)  
[www.phillipgalls.com](http://www.phillipgalls.com)

### Ranked Rebels cruise by Cats

By Matt McGuire  
THE KENTUCKY KERNEL

The UK men's tennis team played its best match of the season yesterday, but ran into a Mississippi buzzsaw. The No. 20 Cats (12-4, 5-1 Southeastern Conference) went into the match with an eight-match winning streak, but lost 6-1 to the No. 13 Rebels (15-2, 5-1). It was UK's first SEC loss of the season.

"They're always a difficult team to beat," UK head coach Dennis Emery said of Mississippi, "but I think we were very close."

The Cats lost the doubles point, and it was an uphill fight from there.

"I thought we let doubles slip away," said UK senior Alex Hume. "It was a really good chance to get a jump on them."

The Cats lost their first three singles matches, securing the win for Ole Miss. Senior Nate Emge, the No. 87 player in the nation, was beaten 6-1, 6-1.

Freshman Bruno Agostinelli, the No. 54 player in the nation, fell 6-3, 7-5.

"Bruno Agostinelli was in a real dogfight," Emery said. Agostinelli's opponent, the Rebels' Eric Claesson, is ranked No. 40 in the nation.

UK senior Carey Rubin then followed suit, losing in three sets.

Hume, the No. 46 singles player in the country, squared off against Ole Miss's Erling Tveit, ranked No. 13. Hume took the first set in a tiebreaker, 7-6, but Tveit won the next two sets, both 7-6 tiebreakers.

"In singles, they came out firing," Hume said. "They're a good team."

The Cats' only point of the day came from sophomore Marcus Sundh, who extended his current winning streak to nine matches with a 6-3, 6-2 win.

Despite losing all but one match, the team stayed positive about yesterday's performance.

"I think everyone fought really hard," Sundh said. "I am really proud

of my teammates."

"I thought we played one of our best matches of the year," Emery said. "I thought we played much better today than we have in some of the matches we've won."

But that effort wasn't good enough to beat the powerhouse Rebels.

"Ole Miss is a top-eight team who is the two-time defending SEC champions," Emery said. "I thought they played like it."

Emery was surprised by the skill level Ole Miss displayed in a mid-season road match.

"We'd like to think we are going to get better," Emery said. "Ole Miss played awfully well for this point in the season. It's almost like they were peaking for this match. They just played great."

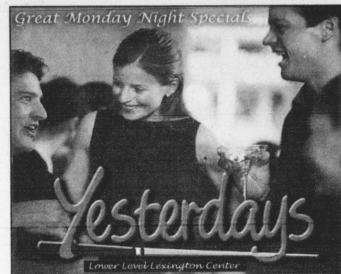
The road doesn't get any easier for UK. The Cats travel to Athens Friday to face Georgia, the No. 1 ranked team in the country.

E-mail sports@kykernel.com

**The Blend** Gourmet Coffee  
Fruit Smoothies  
Deli Sandwiches  
Breakfast Croissants  
Bakery Items

Dine in or Drive Thru  
Mon-Fri 6:30am - 7:30pm  
Sat 8:00am - 6:00pm  
(859) 231-5363 • 399 Walker Ave.  
(next to Backyard Burger)

**10% Off**  
For all UK Students  
\*w/student ID  
Not valid w/any other offer



Great Monday Night Specials

**FROM THE BEGINNING**

**FATHERHOOD IS LOVE**

Right to Life of Central Kentucky  
1600 Harrodsburg Road  
Lexington, KY 40504  
(859) 272-3920  
www.crkf.org

Well, it's not like they had to play Oak Hill, right? Like Randolph last year, man, you're a lottery pick. You can't get any better. You don't need to stay in school any longer.

There are alternatives to abortion. There has to be.

### Getting drafted? Beware of the whisperers

Pst. Hey Rajon. You don't need this mess. Screw parking tickets, buying books and 6 a.m. practices.

The hell with midterms, curfews, and meal plans. You're sitting on a winning lottery ticket.

Do it, man. Go to the NBA.

All those Web sites, man, they've got you in the top 20.

That's guaranteed dollars. A top-15 pick, which is where you are on every draft site, makes \$1.3 million in salary.

How much are you making at UK? Oh, that's right, UK's making all that money off of you winning games for them. They wouldn't be on TV, cashing in on those TV contracts, if they weren't a good team, right?

It doesn't matter that you're getting a free ride to a state university, coached by the best in the business, and idolized by everyone else in the state.

You make UK a good team. You hit impossible, crazy 3's to beat South Carolina and Central Florida. Those are just two games that you single-handedly won, to go with all the other ones you helped win.

And that one million — that's just salary! You've still got endorsements and any other business you want, like Naz Mohammed clothing store or Jamal Mashburn's piece of the Paul Miller dealership.

You know how many parking tickets you can chuckle at with \$1.3 million?

Forget all the people telling you that you have to be able to shoot to make it. You beat South Carolina and Central Florida, right? It's just the next logical step to shoot 3's to beat Dwayne Wade and the Heat, Tony Parker's Spurs, or Allen Iverson's 76ers.

You don't even have to be able to shoot. Iverson can't shoot, so he just chucks it up 40 times a game. He practices during the games. It's the perfect remedy!

If you score 25 points, it doesn't matter how many times you shot. You'll still get an \$80 million shoe deal. Some list your height as a weakness. You aren't too small, man. Your arms are long, your hands are huge. You can jump out of the gym.

It doesn't matter that you'll be guarded by people that are six inches taller than you, that have 15 more pounds of muscle, can still run as fast or faster than you, and have been playing the game for 10 more years than you have.

Tubby Smith's holding you back. He won't let you drive to the hole and put up ill-advised mid-range jumpers, like Kobe does eight times per game. He makes you pass the ball to teammates, which would understandably screw up anybody's rhythm.

And be a floor general? How are you supposed to play your game if they expect you to play everybody else's? Isn't leading the team the coach's job?

Tubby never played in the league. He doesn't know what it's like, like you do after playing in the U-21 World Championship Games last summer. He's only coached, what, like 10 guys who played in the league after listening to him for three or four years.

Of course he's gonna want you to stay. Who's he got coming in, Jodie Meeks? Who did he ever beat?

Oh, his team won the Georgia AAAAA state championship last weekend, and he scored 32 points in the semifinals and 30 in the finals.

Well, it's not like they had to play Oak Hill, right? Like Randolph last year, man, you're a lottery pick. You can't get any better.

You don't need to stay in school any longer.

E-mail cjohnson@kykernel.com

### SPORTS BRIEFS

#### Softball attacked by Tigers

UK (14-16, 2-10 Southeastern Conference) dropped all three games of a weekend series with Louisiana State (31-5, 7-2 SEC) at the UK softball complex. The No. 13 Tigers swept a doubleheader Saturday by scores of 5-2 and 13-2, then took the series with a 6-1 victory yesterday.

Yesterday, LSU struck first with a four-run third inning. The biggest bomb for LSU was a three-run homer by Leslie Klein. UK got a run back in the home half of the third to make the score 4-1.

But the momentum turned for the worse in the fifth, when the Cats loaded the bases on three consecutive singles but were unable to bring any runner home, stranding three of their seven base runners for the game.

#### Men's swimming ends year at NCAAs

The UK men's swimming and diving team concluded its season Saturday at the NCAA Swimming and Diving Championships in Atlanta. Senior Daniel Farnham finished his illustrious career by gaining his fourth honorable mention All-America honor of these Championships. As a team, UK finished in 24th place with 27.5 points.

Farnham, a senior from Mount Berry, Ga., gained his second consecutive honorable mention All-America recognition in the 100 freestyle event by finishing in a tie for 15th place. Farnham ends his career with a school-best 16 All-America distinctions.

#### Women's tennis sweeps Mississippi

No. 29 UK (12-6, 5-1 SEC) completed a two-match weekend sweep of the state of Mississippi yesterday with a 6-1 victory over Ole Miss in Oxford, Miss. Friday, the Cats defeated Mississippi State 7-0 — the third time this season UK has blanked an opponent in a match.

Yesterday, UK won the doubles point after dropping the first match. The duo of Lara Maurer and Joelle Schwenk topped the Rebels' Ksenia Tokarieva and Nika Koukhartchouk 8-5, and UK's Danielle Petrisko and Caroline Winebrenner beat Preethi Subramanian and Carlin Cochran 8-6 to claim the comeback coup.

The Cats then took five of the six singles matches to clinch the victory. Kim Coventry Schwenk, Danielle Petrisko, Carolina Escamilla and Jessica Gluggoli all won their matches.



Andrew Huggins | Staff  
First baseman Megan Glenn earns an out during the doubleheader against LSU on Saturday. LSU swept UK over the weekend in a three-game series.

#### Baseball continues torrid start

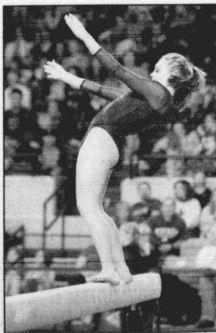
The No. 26 Cats (20-4, 4-2 SEC) took two of three games from No. 12 Tennessee this weekend in Knoxville, Tenn. Yesterday, sophomore Greg Dombrowski pitched his second career complete game to lead the Cats to the series win over the Vols by a score of 4-1. Dombrowski raised his record to 5-0 on the season. He hasn't recorded a losing decision in college. One streak of his did end, however: His 58 1/3 consecutive innings without walking a batter snapped in the sixth inning.

It was the first road series win for the Cats since 2003.

#### Gymnastics last in SECs

No. 18 UK finished seventh in a loaded SEC championships field this weekend in Birmingham, Ala. The Cats scored a 191.150 to finish last among the seven SEC schools that sponsor gymnastics. No. 1 Georgia won its third consecutive conference title and sixth in seven years. Auburn finished second.

Compiled from UK Athletics Reports



Keith Smiley | Staff  
Junior Rachel Riley tries to keep her balance while competing on the balance beam during Excite Nite on Jan. 14 in Memorial Coliseum.

Look What's On Tap At

**Pazzo's & Pazzo's Pub**

Over 150 Bottled Beers! Plus... 38 Beers on Tap!

Catch the NCAA Tourney Action on Pazzo's 16 TVs!

**Daily Pint Specials**

Mon:	Spaten & Franz	\$2.75 Pints
Tues:	Sierra Nevada	\$2.25 Pints

**Wednesday:**  
Newcastle Brown Ale Night!

\*One Newcastle Brown Ale Purchased With Every Pacher Purchase! While Supplies Last.

**Pazzo's Pub - Open at 5 pm Daily!**

**255-5125** Corner of South Lime & Euclid

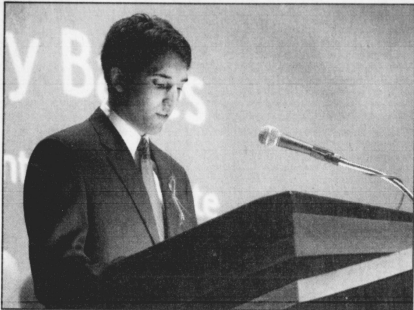
**Viji Jeganathan Scholarship for Cross-Cultural Understanding**

Open to international and American students. Awarded by Office of International Affairs. For more information, visit [www.uky.edu/intlaffairs](http://www.uky.edu/intlaffairs). **Deadline: Monday, April 10, 2006**

## Q&As with SG Presidential Candidates

The Kernel Editorial Board sat down with SG Presidential candidates Andy Bates, Jonah Brown and Preston Worley to talk about their platforms and candidacies. The interviews are excerpted below and are available in full at [kykernel.com](http://kykernel.com).

### Andy Bates



TRICIA SPAULDING | STAFF

**Q: What prompted you to run for SG president?**

A: The first thing that prompted me to run for SG president was, it was my sophomore year, and the Referendum One scandal was taking place. And I had several friends who were involved with Student Activities Board, and I just was disgusted with what Student Government was attempting to do, and so Will (Fuller) and I discussed it on the way home from Lexington over Fall Break, and we knew we had to stand up to de-

fend the students and to defend our friends in Student Activities Board, because by running and getting involved with Student Government, we would be in a position where we could vote against these hostile takeovers and truly begin to cultivate and reshape Student Government into what it should be: a government that is truly the students' government.

**Q: If you are elected as SG president, what will be your No. 1 priority in office?**

A: Right now, in a lot of ways I think there has been some — early on at least — there was extreme leadership in the Senate; a lot of senators were getting things done. I know Will and myself sponsored several elements of key legislation, including a resolution about the meal plan, a constitutional amendment to bring about online voting with regard to freshman elections, and just numerous other things. But the problem is, then, we sponsor legislation, we sponsor resolutions, we send messages that are supposed to be taken to the Board of Trustees, messages that are supposed to be taken to elected lawmakers — but the executive branch really hasn't done

much good. ...  
**Q: Why should students care about the outcome of this election?**

A: For the longest time, your average student really hasn't been able to care about Student Government because Student Government really hasn't been about them. In years past, it's been a Sigma Chi versus a Chi Omega, and now it's an Alpha Phi Alpha against a Lambda Chi Alpha. And in years past, there has never been a real true strong leader from the student body — until now. ...

**Q: What do you think is the biggest problem facing UK students?**

A: In my opinion, the biggest problem facing UK students right now is the rising prices of everything. Textbook prices are going up, the meal plan prices are going up, housing fees are going up, and tuition went up 12 percent.

One thing that Will and I have looked at — what other university student governments have done — is we'd like to establish a textbook rental service. ...

**Q: Ideally, what role should SG play in the UK community, and how's it doing right now at playing that role?**

A: SG's main purpose is to be the mouthpiece of the student body and time and time again, Will and I — and I think the rest of the student body — doesn't agree that that's

what taking place. So many people, whenever they address the Senate, whenever they have their platforms, they say "I think we should do this" or "I want to do this." Will and I are preaching what the students want. ...

That's why Will and I have taken the initiative, we've gotten the signatures for a referendum, and students are going to be able to actually vote on the issue of the meal plan. That way, as leaders, Will and I can go to the Board of Trustees and say, "This is what the students want." That would be our job as leaders — not to say what we want, but what the students want.

**Q: What would you do to increase student involvement with SG?**

A: I think one thing that I've already touched on early on was the fact that I would like to see it where any student that walks in can immediately be assigned to a committee; any student can address the Senate; any student can voice their concern to the Senate, rather than Members' Privilege. ...

**Q: In what ways can SG expand and protect student rights?**

A: This all hinges from the fact that the president of the student body is on the Board of Trustees, and as a member of the Board of Trustees, you have all the governing authority of the University of Kentucky vested in you, so you have the chance to tell the board members when student rights are being infringed. ...

**Q: What prompted you to run for SG president?**

A: Basically, over the years since I've been here, I've seen and experienced firsthand the many problems that students face on campus. But I've also had the opportunity to see the resources and the potential that Student Government could offer and the potential that this student body has. And I've also had the experience as a student leader. And based on those reasons, I felt like I would be the best candidate to take advantage of the resources and improve the problems that students are facing on this campus and improve the status of the organization.

**Q: If you are elected as SG president, what will be your No. 1 priority in office?**

A: My biggest priority is something I feel like has been a serious problem over the years, and that is representation on campus. I feel like we've been lacking in a student voice. The Senate has been doing a lot of great things this semester, but it's time for the executive branch to go back to work and make some strong changes on campus, and that's what I think Student Government needs to be focusing on. ...

**Q: What do you think SG is currently doing well, and where could it improve?**

A: ... A lot of times, we've been concerned with what's going on in Student Government, what Student Government leaders can do for each other and what they can do to change the organization, but we

need to bring the focus back to the student body. That's why I tell people all the time, I'm not running for Student Government president; I'm running for student body president. And the difference is that we're focused on bringing changes to the students. ...

**Q: Why should students care about the outcome of this election?**

A: For several reasons — first of all, just because the winner is the one that will be that student voice in a lot of different things. ... A lot of times, students will say we have problems with this policy, we don't like the dining services program, or we're unhappy with the parking situation on campus, but we don't have anyone speaking, representing the students, saying these are the changes that we want. That's why this election is important, is that you're electing the person who will have that power and that potential. ...

**Q: What do you think is the biggest problem facing UK students?**

A: ... We're entering into this transition phase as we pursue this top-20 plan. But students are not being represented in a lot of these things that are being changed; a lot of changes are being made without a student voice, without students speaking on their own behalf. ...

**Q: Why should students care about the outcome of this election?**

A: ... It's great that we have a student body president that can speak and will speak for the students

— and that's what I'm committed to doing — but we also have to educate students on the issues so that they can also speak. ...

**Q: Ideally, what role should SG play in the UK community, and how's it doing right now at playing that role?**

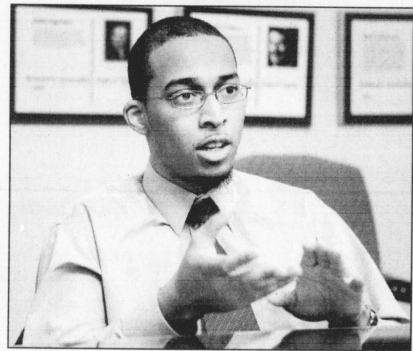
A: I think the primary role for Student Government needs to be staying connected to the students to the best of its ability and listening to the students — finding out the things that they are interested in, what they're concerned with, and then taking those issues and working toward improving those, finding solutions to the problems that students are faced with. And that is something I feel like SG has been very poor in the past couple of years. ...

When I say connect to students, I mean the entire student body. We can't focus on the Greek community; we can't focus on just the residents on campus; we have to focus on everyone, and everyone has something to gain from Student Government. And that's what we need to be focusing on doing is finding out: What is it that you want out of Student Government? ...

**Q: What would you do to increase student involvement with SG?**

A: ... The first thing we need to do is educate them (students) on the potential that Student Government has, let them know we have the power to sit on different committees and

### Jonah Brown



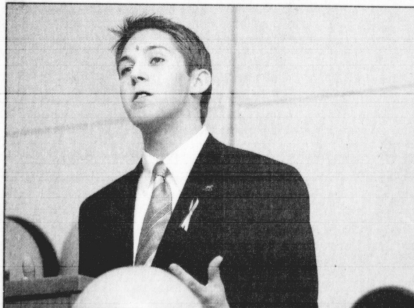
KEITH SMILEY | STAFF

change the meal plan, we have the power to bring changes to the campus infrastructure to improve women's safety, we have the power to work on campus diversity, to put pressure on various committees, to put pressure on the administration, to put pressure on the city of Lexington, put pressure on the state legislature to let them know these are the things that students are the most concerned with. ...

**Q: In what ways can SG expand and protect student rights?**

A: I believe the biggest thing that we can do is first to find out what it is that students are having problems with and then take those problems to the administration. We don't need to be afraid to go to the administration and speak up against them on a lot of the things that students are concerned with. ...

### Preston Worley



KEITH SMILEY | STAFF

**Q: What prompted you to run for SG president?**

A: I was involved a little bit with the campaigns last year, and through seeing that, I was able to see that — I saw Student Government that needed the leadership to make some of the changes that I thought needed to happen on campus, and I thought that I was the most qualified person to do that, so that's really what prompted me to run.

**Q: If you are elected as SG**

president, what will be your No. 1 priority in office?

A: Last night (March 21) at the (Residence Life) debate, we talked about the No. 1 problem that we see facing students is a lack of community here on campus, and our No. 1 priority would be to approach that lack of community. And in order to do that, we want to look at improving women's safety, improving the meal plan, improving relationships with police around the campus, and several other things that will foster

a sense of community, a sense of pride on this campus.

**Q: What do you think SG is currently doing well, and where could it improve?**

A: Right now, SG, they have some great services that they do — the tax service, the DVD service, the legal service. They do have a lot of things that they do well, but what they need to improve is advocating for students, standing up for students, trying to ensure that there's a student on every committee that the administration forms, trying to ensure that the student voice is heard. ...

Scott (McIntosh) and I have talked a lot about, we don't want it to have any more big events — events, that should be SG (Student Activities Board). We don't want to do events. ... So Scott and I, when it comes to events, would prefer to work with Lexington, work with Rupp Arena, Ticketmaster, and maybe try to provide cheaper concert tickets to an event that is already going on instead of trying to put on our own event. ...

**Q: Why should students care about the outcome of this election?**

A: Students should care about the outcome of every SG election, but especially this one, because it's such a pivotal year. Right now, SG needs to repair a relationship with the administration and repair a relationship with the students. ... SG has such a great opportunity

with a seat on the Board of Trustees with a large budget, with connections to so many different administrators — such a great opportunity for the student voice to be heard — so students should really care about this election, who's going to carry their voice the best.

**Q: What do you think is the biggest problem facing UK students?**

A: The lack of community. I would say and that comes from — a lot of women don't feel safe on this campus, with 36.5 percent of women being victimized while they're at UK. It comes from a bad dining plan and bad dining services — you know, dining is a very social thing, people like to eat together, and right now the food here on campus and the meal plan, it doesn't work for students. ...

**Q: Ideally, what role should SG play in the UK community, and how's it doing right now at playing that role?**

A: ... It's very important for SG to — we've talked about refocusing, and just kind of step back and look, and say this is what we need to do. I mean, advocate for students — and this is how we need to do it. We need to be ready to stand up for students in any way possible, and that's their (SG's) main role, and I don't think they're doing that very well right now.

**Q: What would you do to increase student involvement with**

SG?

A: We've talked a lot about awareness and communication, to get the word out about SG. ... We'd like to start a whole new Web site. We've talked about something like "ukystudents.com" that would have services on it, like maybe a campus calendar, a UK version of Pickapuff that we can try to design that would be for free, maybe a book exchange bulletin board. ... I'm trying to sell this book for this amount. ... You know things like that that get students interested in going to the SG Web site, and then once you get there, you can use that Web site to inform all the students about what's going on and the services offered them. ...

**Q: In what ways can SG expand and protect student rights?**

A: I think, again, the biggest thing is standing up for students and being the advocate. Whenever a student feels that their rights have been violated, or that something is not going the way that they feel it should at the university they should feel comfortable coming to SG, going to the SG president, vice president, or executive staff, and saying "This is my problem" and then (SG) using the communication ability, the connections, and even if it takes it, the voice on the Board of Trustees. Then the Student Government president and vice president should take that issue that the students have to the administration and not stop until they get some kind of answer. ...



# Bringing home the bacon — and the nutrition

Scientists tout genetically altered pigs laden with healthy fatty acids

By Denise Gelene  
LOS ANGELES TIMES

If a new kind of pork makes it to the dinner table, healthy eaters worried about fat and heart disease might finally be free to, well, pig out.

Scientists using genetic engineering techniques have produced pigs rich in omega-3 fatty acids — a kind of healthy fat abundant in fish but not naturally found in meat.

The omega-3 fatty acids are believed to offer some protection against heart attacks and federal nutrition guidelines recommend adults include them in their daily diets.

But "some people are not going to eat fish no matter what," said Penny Kris-Etherton, a professor of nutrition at Pennsylvania State University who was not involved in the research. "This is a way people who don't like fish can benefit."

There is one little question looming over the potential feast of greasy bacon, succulent chorizo and juicy Chinese pork stew. Because

the research is in its early stages, no one has yet sampled the pigs to see if they still taste like pork.

Harvard University's Jing Kang, one of the scientists involved in the experiment, is confident the levels of omega-3 fatty acids in the new pigs aren't high enough to ruin the flavor. "There should be no difference," he said, adding that, as far as he can tell, the pigs "don't smell fishy."

The team of scientists from Harvard, the University of Missouri and the University of Pittsburgh used a gene from an earthworm, which naturally produces omega-3 fatty acids, to genetically modify their pigs.

The researchers began by harvesting more than 1,600 eggs from female pigs. They removed the genetic material from the eggs and replaced it with new DNA that had the earthworm gene inserted.

The manipulated embryos were then implanted into 14 surrogate mothers. A total of 10 male piglets were born.

DNA analysis of the piglets showed that six had the earthworm gene, according to the study published online Sunday in the journal *Nature Biotechnology*.

Kang said the cloned pigs produced one-

fifth the amount of omega-3 fatty acids found in salmon, considered the best source of the healthy fat. But he said successive generations bred the old-fashioned way would likely produce higher amounts of omega-3.

Right now, the pigs have one copy of the earthworm gene, but through selective breeding, their progeny could acquire two.

"I am confident we can go much higher," said Kang, whose research was funded by the National Institutes of Health and the American Cancer Society.

The new pigs could help pork producers solve a tricky problem. Through breeding and diet changes, farmers have dramatically lowered the fat content of pork during the last 30 years. But leaner meat is drier and less flavorful.

To improve the taste and texture of pork, farmers are now trying to increase the amount of fat in pigs without drastically raising saturated fat — unhealthy fat that can boost cholesterol, which in turn can lead to heart disease.

It's been a struggle. In one failed experiment, pigs were given feed enriched with omega-3 fatty acids. But the resulting meat was unappetizingly mushy and had yellowish

fat. Genetic engineering could offer a solution, said Mark Boggess, director of animal sciences at the National Pork Board.

But he cautioned against over exuberance. Higher omega-3 fatty acids "would probably have some bearing on the melting point and consistency of the fat and how firm it is at room temperature," he noted. "It would definitely have to be evaluated very carefully."

Getting the pigs to market could also be a challenge. The Food and Drug Administration has not allowed any genetically altered animals to enter the food chain, despite scientific studies showing the animals are safe.

Before clearing the meat for consumption, the FDA requires detailed biological information, including controlled studies comparing modified animals to normal ones.

"They treat them like they are a new drug," said University of Illinois professor Matthew Wheeler, who has been working on genetically engineered animals for 13 years.

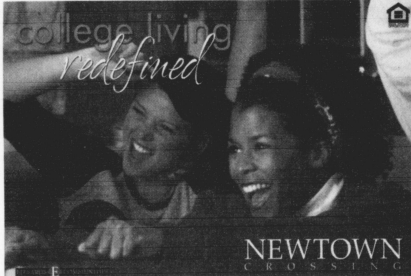
Kang, meanwhile, is looking at new culinary possibilities. "Pig was the first," he said. "But transgenic chickens, cows and fish are on the way too."

... some people are not going to eat fish no matter what. This is a way people who don't like fish can benefit.

— Penny Kris-Etherton, Penn State nutrition professor, on genetically altered pigs with omega-3 fatty acids.

**BETTER HURRY! SUMMER-LEASING NOW!**  
**2006-2007 SCHOOL YEAR**

Call Today! **859-226-5600**  
351 Foreman Avenue Lexington, KY 40508



*Better Hurry,  
Summer Leases Going Fast!*

- Free Highspeed Internet
- Free Computer Lab
- Free Fitness Center
- Free Tanning Bed
- Free Resort Pool
- Free Theatre
- Free Parking



# One Day. One Dollar.

March 28th from 11-1  
on the Student Center Patio

\$1 Gets you a pasta toss lunch

\$1 Buys 5 cans of food for Lexington Area food banks

Until food runs out

KENTUCKY ■ HARVEST

# Millions

IN ■ A ■ MONTH



Co-Sponsored by:





# UK UNIVERSITY OF KENTUCKY

## Staff Senate

Election 2006

### What is the Staff Senate?

In 2002, the University's Board of Trustees amended the Governing Regulations to create a forum to 'open the lines of communication among all segments of the staff, as well as between staff, faculty, and students of the University' (GR V(A)-1). This forum, the University of Kentucky Staff Senate, exists both to promote to the attention of the University administration the pressing interests, needs, and concerns of the staff, and to help share information from the administration with the staff. By doing this, we hope to create a stronger bond among the staff of the University, and to encourage cooperation between everyone for the long-term benefit of the University.

### How Does the Staff Senate Work?

The Staff Senate meets regularly, on the second Thursday of every month. The meetings are open to everyone. Each meeting features reports from the Senate's internal committees as well as from Senators serving on University-wide committees or commissions such as the President's Commission on Women, the Employee Benefits Committee, and the Ethics Committee. Staff Senators have also represented staff interests on ad-hoc committees such as the Top 20 Steering Committee, the IRIS Steering Committee, and the Retiree Health Benefits Committee.

The Staff Senate frequently invites guest speakers to inform us on University initiatives such as Operation Educate, Make the Difference, and the Work-Life Office. In addition, the Senate has also hosted presentations from local and state civic leaders and programs including Ernesto Scorsone and Habitat for Humanity. In 2003, the Staff Senate was instrumental in organizing the Gubernatorial Convocation, a discussion between the two leading candidates in the race for Governor of Kentucky.

The Staff Senate Web site is: <http://www.uky.edu/Staff/Senate>. We are working to make this a central location for important information for staff of the University. We hope to soon have a submittable form that staff can use to send their concerns and issues directly to the attention of the Staff Senate.

### What Else Does the Staff Senate Do?

The Staff Senate has eight standing committees. Each Senator serves on one of these, where much of the Senate's work takes place. Some committees, such as the Bylaws Committee and the Election Committee, are solely concerned with the business of keeping the Senate functioning. The Institutional Finances and Resource Allocation Committee, a joint committee with the University Senate, seeks to understand and optimize the use of money and resources across the University. There are two advisory committees, one of which serves as a liaison to the President, the other to the Staff Representative to the Board of Trustees. The External Affairs Committee keeps the Senate informed about civic issues, and the Public Relations/Communications Committee lets staff know about Senate events and happenings. The Staff Issues Committee works to investigate and resolve issues that are important to the staff of the University. The External Affairs Committee has been active in bringing local and state civic leaders to speak to the Senate. The Public Relations/Communications Committee recently presented a truly dedicated staff member with an engraved clock, in honor of 50 years' service to the University.

### Who Should Be a Part of the Staff Senate?

You should, if you're a full-time (0.75 FTE or greater) staff member who's been employed at UK continuously since April 1, 2005.

### Why?

Because you're a hard-working, conscientious staff member who is willing to listen to all sides of an issue before reaching a conclusion. Because you're dedicated not just to your job, but to making the University a better place to work. Because you want to show that you care about UK and the University community. Because you want to be a part of an organization dedicated to helping the voice of the staff be heard by the President and the Board of Trustees. Because the Staff Senate needs you.

### How Can I Become A Staff Senator?

We are holding an election this spring for a record number of new Senators. You can get involved by completing the self-nomination form on the back page of this insert (also available online at: <http://www.uky.edu/Staff/Senate/election>) and returning it to the Staff Senate office, 202c Main Building by April 21, 2006.

Once you receive word from the Senate office that your nomination has been verified, you may begin campaigning for office. Campaign signs must conform to University policy. See <http://www.uky.edu/Staff/Senate/SignRegulations.htm> for details. Electronic voting will take place from May 1 - May 12, 2006. If you do not have access to vote electronically, laptops will be available for voting at Staff Appreciation Day on May 12. Results of the election will be announced on May 19, 2006. An orientation for newly elected Senators will be held before the regular Staff Senate meeting in June 2006.

### Staff Senate

#### Officers

2005 - 2006

Chair, Kyle Dippery kyle@enr.uky.edu	257-1346
Vice Chair, Kathy Sheppard-Jones kjone@uky.edu	257-8104
Secretary, Cecile McKinney cmckinn@uky.edu	257-3159
Treasurer, Rebecca Scott rebecca.scott@uky.edu	257-2416
Parliamentarian, Pat Van Meter pvanmete@uky.edu	257-4757 x81136
Office Coordinator, Vickie Clay vclay0@email.uky.edu	257-9242

### Election Timeline for 2006 (All Times are EST)

April 5 2 - 5pm	Information session Hospital Auditorium HG611
April 6 12 - 4pm	Information session Young Library Auditorium
April 10	First day of self-nominations
April 21 4 pm	Last day of self-nominations
April 26 8 am	List of candidates available on <a href="http://www.uky.edu/Staff/Senate">www.uky.edu/Staff/Senate</a>
May 1 noon	Electronic voting begins
May 12 4:30 pm	Electronic voting ends
May 19	Results announced

[www.uky.edu/staff/senate](http://www.uky.edu/staff/senate)

## UK Staff Senate Precincts

To find the precinct in which you are eligible to run, find your department code in the second column. For example, if you are a staff member in the College of Public Health's Department of Health Behavior, your department code should be 7P150; this would put you in Staff Senate Precinct 7A, which represents the colleges of Dentistry, Nursing, Pharmacy, and Public Health, along with the College of Allied Health services and the Sponsored Research areas. The department names in the third column are a description of the areas your precinct represents, and are not meant to be a complete list of every department in that precinct. The precinct code in the first column is an abbreviation for Staff Senate purposes.

Precinct	Department Codes	Department Descriptions	Number of Open Seats
1	1xxxx, 9xxxx	University Administration; UKAA; University-Wide Services	5
3A	30xxx-39xxx, 3Axxx 3Bxxx, 3Dxxx	Sr VP Administration; Arboretum Administration; International Affairs; Treasurer; Financial Systems; Purchasing; Office of Institutional EEO; Auxiliary Services	4
3C	3Cxxx	Physical Plant	8
3F	3Fxxx - 3Zxxx	VP Fiscal Affairs and Technology; Communications; University Computing; Planning, Budget & Policy Analysis; Emergency & Safety Services; Human Resources; Employment Services; Internal Audit	5
4	4xxxx	Research	5
7A	7Axxx - 7Zxxx except 7Hxxx	Medical Center Academic units; Allied Health Services; Sponsored Research	3
7HA	7H0xx	College of Medicine	7
7HB	7H1xx - 7H3xx	Anatomy and Neurobiology; Anesthesiology; Emergency Medicine; Behavioral Science; Biochemistry; Diagnostic Radiology; Internal Medicine	5
7HC	7H4xx - 7H7xx	Microbio, Immuno & Molecular Genetics; Family Practice; Community Medicine; Obstetrics & Gynecology; Pediatrics; Molecular & Biomedical Pharmacology; Physiology	5
7HD	7H8xx - 7H9xx	Psychiatry; Ophthalmology & Visual Services Surgery; Neurology; Radiation Medicine; Physical Medicine & Rehabilitation	4
80	80xxx, 83xxx, 86xxx, 89xxx	Office of the Provost; Associate Provost - Undergraduate Education; Registrar; Student Services; VP for Research; Institutional Research; Planning & Effectiveness; International Affairs	3
84	84xxx, 85xxx, 88xxx	Minority Affairs; Dining Services; Library	8
81A	810xx - 811xx	Agriculture Administration; Agriculture Academic Units	5
81B	812xx - 819xx except 81300	Agriculture Experiment Stations, Farms, Data Centers; Development Programs; Family & Consumer Sciences; Agriculture Communications Service; E-Extension; 4-H Operations; Motor Pool	4
81300	81300	Extension Field Programs	5

# UK Staff Senate Precincts

3

Precinct	Department Codes	Department Descriptions	Number of Open Seats
8A	8Axxx - 8Gxxx	Kentucky Tobacco Research & Development Center; College of Arts & Sciences; College of Business & Economics; College of Education	2
8Z	8Hxxx-8Zxxx, 5Yxxx	College of Engineering; College of Law; College of Communications and Information Studies; College of Design; College of Social Work; Graduate School; College of Fine Arts	3
H30a	H3000 - H3059	Acute Care & Dialysis Services; Hospital Administration; Admitting & Registration; Cancer Clinic Services; Cancer Services - Inpatient; Chaplain	3
H30b	H3060 - H3069	Children's / Maternal / Psychiatric Services	4
H30c	H3070 - H3099	Continuum of Care Services; Critical Care Services; Diagnostics Services	4
H31	H31xx	Emergency & Trauma Svcs; Facility Svcs/ Clinical Eng; Fiscal Plan & Analysis / Accounting; Gill Heart Institute; Healthcare Enterprise Info Svc; ICIS; Imaging Svcs; KCN	5
H32	H32xx	Laboratory Svcs; Managed Care Finance Svcs; Marketing; Materials / Purchasing Svcs; Medical Records Svcs; Neurosciences; Nursing Practice & Support Svc; Command Center	5
H33	H33xx	Patient Account Svcs; Perioperative Svcs; Pharmacy Svcs; Radiation Medicine Svcs; Speech; Support Svcs - Contract Dietary	6
H34	H34xx - H39xx, H2xxx	Support Svcs - Contract Env; Therapeutic Svcs; Transplant Svcs; Value Analysis / Supply Mgmt; Volunteer Services; Hospital EVPHA Administration	3

Your UK Staff Senators		Name	Precinct	Name	Precinct	Name	Precinct
		Sean Scott	4	Anthony Farley	3F	Paul Wilson	81B
Kathy Sheppard-Jones	4	Michael Gay	3F	Steve Zanone	81B		
Mary Wethington	4	Marilyn Hensley	3F	Annette Bigler	8A		
Andy Workman	4	John Howard	3F	Debbie Burton	8A		
Ann Livingstone	80	Marty Jacks	3F	Bob Holley	8A		
Cecile McKinney	80	Bart Miller	3F	Stuart Reedy	8A		
Rebecca Scott	80	Jim Owens	3F	Kenya Stump	8A		
Martha David	84	Ben Rice	3F	Janice Birdwhistell	8Z		
Kathy Franklin	84	Kurt Buterbaugh	7A	Kyle Dippery	8Z		
Jack King	84	Janet Felts	7A	Sharon Taylor	H30A		
Robert Amburgey	81300	Rebecca Lynn Flanagan	7A	Candice Travers	H30C		
Jennifer Klee	81300	Belinda Morgan	7A	Jaime Kumar	H31		
Melody Mays	81300	Paula Arnett	7HA	Scott Marksberry	H31		
Janet Stevens	81300	Lola Dixon	7HA	Ryan Pennington	H31		
Gwen Christopher	3A	Mark Jarrell	7HA	Kevin Phillips	H31		
Cherice Phelps	3A	Shari Levy	7HC	Johannah Platt	H31		
Cindy Isaac	3C	John Earnest Jr	81A	Pam Webb	H31		
Charles Moore	3C	Kathy Scahill	81A	Jana Grayson	H32		
James Todd	3C	Pat Van Meter	81A	Norma Tipton	H32		
Don Wibbels	3C	Jann Burks	81B	Carol Harmon	H33		
Linda Bach	3F	Aimee Nielson	81B	Jon Nichols	H34		
Michael Blackard	3F	Terry Olson	81B				
Marla Boyd	3F	Chris Thompson	81B				

# UK Staff Senate Nomination Form

## Self-nomination Form for Senatorial Term of July 1, 2006, to June 30, 2009

With a unanimous vote on Jan. 22, 2002, the UK Board of Trustees approved an amendment to the University's Governing Regulations to create a Staff Senate. The first Staff Senate election was held in 2002. Any full-time UK staff member interested in becoming a Staff Senator must complete and return this self-nomination form to the Staff Senate.

**In order to run for election as staff senators, staff members must have been regular, full-time employees on or before April 1, 2005.**

Name (print) \_\_\_\_\_ Nickname \_\_\_\_\_

Social Security Number \_\_\_\_\_ (to verify hire date and department information)

Department Name \_\_\_\_\_ Department Number (found on pay stub) \_\_\_\_\_

Campus Address \_\_\_\_\_  
\_\_\_\_\_

E-mail Address (print) \_\_\_\_\_

Phone \_\_\_\_\_ Preferred time to call \_\_\_\_\_

Signature \_\_\_\_\_ Date \_\_\_\_\_

The Staff Senate will contact you for a digital photo after your nomination has been verified.

This completed form must be delivered no later than **4:00 PM (EST) Friday, April 21, 2006**, to:

Staff Senate Election Committee  
202C Main Bulding  
Lexington KY 40506-0032  
859-257-9242

**or to:**  
Kathy Sheppard-Jones  
209 Mineral Industries Building  
Lexington KY 40506-0051  
859-257-8104

For Official Use **ONLY**

Verification

Photo received: Yes \_\_\_\_\_ No \_\_\_\_\_

Eligible: Yes \_\_\_\_\_ No \_\_\_\_\_

Dept. number: \_\_\_\_\_ Precinct: \_\_\_\_\_

Verifying Senator Initials: \_\_\_\_\_ Date: \_\_\_\_\_