

Copy 1

1988-89 Lady Kats Basketball **KENTUCKY**

KENTUCKY LADY KATS (10-10, 1-3) VS. GEORGIA (17-3, 3-1)

Saturday, February 4, 1989

Memorial Coliseum, Lexington, Ky., 7:30 p.m.

The Kentucky Lady Kats are happy to return to the confines of Memorial Coliseum, even if it is to face the No. 5 Georgia Lady Bulldogs. The Lady Kats came home Wednesday after a nightmarish six-day trip to Mississippi that produced two losses, one defection and two illnesses.

The losses were both Southeastern Conference games (70-52 to Mississippi and 64-54 to Mississippi State), leaving UK 10-10 overall, 1-3 in the SEC and a loser of four straight games. UK was on a six-game winning streak before the slide.

When the Lady Kats gathered for practice on Thursday, things got worse. Junior center Lora Spencer, who started 24 games last year and two as a freshman, decided to leave the team for personal reasons. A 6-foot-1 native of Russellville, Spencer had started in one game this season, but had seen a sharp decline in playing time. Against Mississippi she played one minute and against MSU she played two minutes. She was averaging 3.1 points and 2.5 rebounds.

Starting forward Vanessa Foster-Sutton, and substitute guard Theresa Stewart, meanwhile, were absent because of flu-like symptoms.

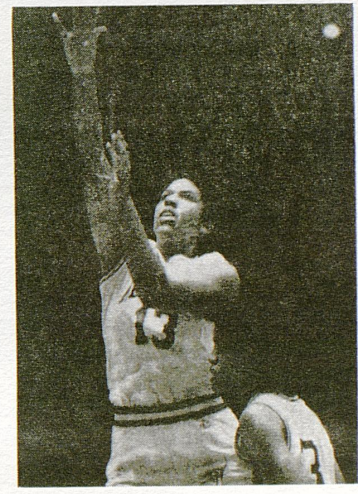
Georgia was on a nine-game winning streak until the team was halted by the No. 2 Tennessee Lady Vols, 78-64, last Saturday. The loss, Georgia's first in SEC play, brought the Lady Bulldogs record to 3-1 in conference action and 17-3 overall and dropped Coach Andy Lander's squad from No. 4 to No. 5 in the polls. The Lady Bulldogs have finished every season since 1983 ranked in the Top 20.

Kentucky, on the other hand, was experiencing troubles of its own in Mississippi. Although junior cen-

ter Lisa Ellis contributed 24 points in the Ole Miss game, Kentucky could not hold off Mississippi's offensive attack. UK then traveled to Mississippi State with hopes of a split on the road trip, but the Lady Bulldogs had something different in mind and ruled on their home court.

T a m y e Jenkins, Georgia's 6-4 sophomore center and sister of former UK Wildcat Cedric Jenkins, leads Georgia in scoring and rebounds with an average of 15.1 points and 7.5 rebounds a game. Senior Carla Green is second in scoring with an average of 13 points and contributes to team rebounding with 5.5 per game.

Although her playing time has dwindled, senior guard Jodie Whitaker continues to lead the Lady Kats in scoring with 11.7 points and in assists with 57. Whitaker, who was a starter on the UK squad earlier this season, has been lifted from the lineup and seen her playing time fall from an average of 27.1 minutes over the last four games.



Kentucky center Lisa Ellis

Helping you communicate through the printed image . . .

Harp
ENTERPRISES, INC.
PRINTING

2400 Merchant St., Lexington, KY 40510
Mailing Address:
P.O. Box 12830, Lexington, KY 40583-2830
KY WATS Line 1-800-432-9282
FAX 1-606-233-9457

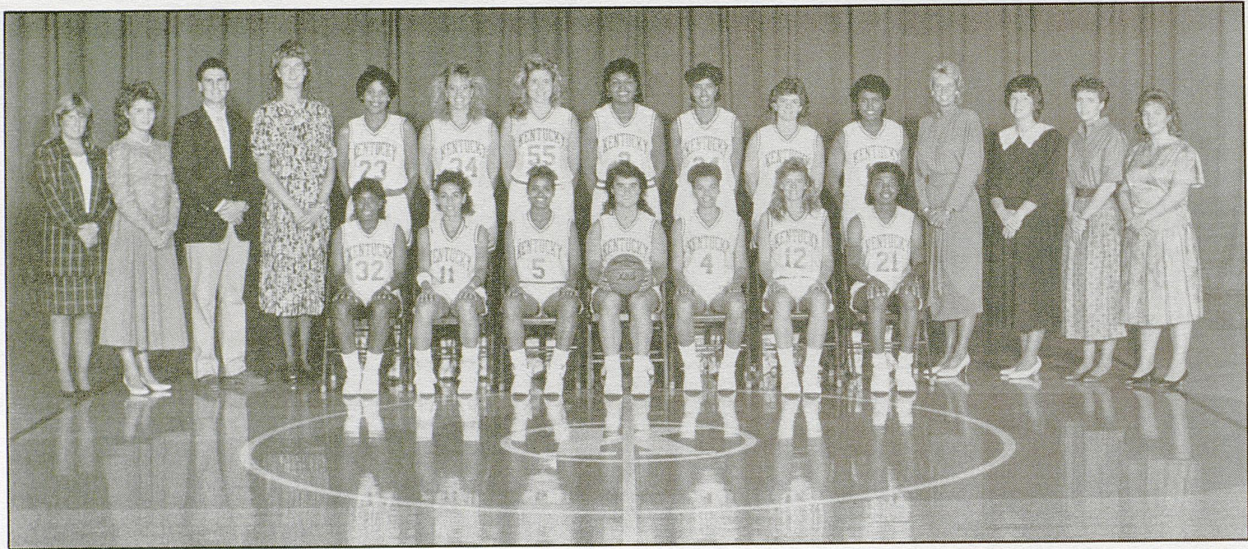
Phone (606) 253-2601

Call us for your complete art, typesetting, and printing needs.

Printed
Feb. 1989

1988-89 Lady Kats

1988-89 KENTUCKY LADY KATS



Front row, left to right: Kris Miller, Malinka Salhi, Theresa Stewart, Jodie Whitaker, Ruth Mountain, Kristi Cushenberry and Tracye Davis. Back row, left to right: Asst. Sports Information Director Rena Vicini, Manager Jenn Holman, Asst. Coach Andy Barnes, Asst. Coach Cindy Noble-Hauserman, Mary Custard, Pam Shrum, Angel Stevens, Lora Spencer, Vanessa Foster-Sutton, Jamie Hobgood, Stacy McIntyre, Coach Sharon Fanning, Trainer Sue Stanley, Graduate Assistant Jane Dalton, Head Manager Sharon McCauley.

1988-89 UNIVERSITY OF KENTUCKY LADY KATS Numerical Roster

NO.	NAME	HT	POS	CLASS	HOMETOWN/SCHOOL
3	Lora Spencer	6-1	C	JR	Russellville / Logan County HS
4	Ruth Ann Mountain	5-8	G-F	JR	Columbus, Ohio / Lees JC
5	Theresa Stewart	5-4	G	JR	Columbus, Ohio / Lees JC
10	Stacy McIntyre	5-8	F	FR	Georgetown / Scott County HS
11	Malinka Salhi	5-4	G	JR	Mons, Belgium / Independence (Kansas) JC
12	Kristi Cushenberry	5-9	G-F	FR	Hendersonville, Tenn. / Beech HS
14	Jamie Hobgood	5-9	G-F	FR	Madisonville / North Hopkins HS
15	Jodie Whitaker	5-7	G	SR	Austin, Ind. / Austin HS
21	Tracye Davis	5-8	G	SO	Lexington / Henry Clay HS
23	Mary Custard	5-10	F-C	JR	Cynthiana / Lees JC
24	Vanessa Foster-Sutton	6-0	C	JR	Chickamauga, Ga. / Truett-McConnell JC
32	Kris Miller	5-4	G	JR	Owensboro / Owensboro Catholic
34	Pam Shrum	6-0	F-C	SR	Monticello / Monticello HS
55	Angel Stevens	6-1	C	SO	Jackson / Breathitt County HS

Head Coach: Sharon Fanning (Tennessee-Chattanooga, 1975)
203-144 career (12 seasons) 14-15 at UK (1 year)

Assistant Coaches: Andy Barnes (East Tennessee, 1980)
Cindy Noble Hauserman (Tennessee, 1983)

Graduate Assistant: Jane Dalton (Appalachian State, 1988)

KENTUCKY LADY KATS

1989 Lady Bulldogs



First Row (l-r): Sharon Baldwin, LeJuana Hardmon, Kim Berry, Adrienne Shuler and Carla Green. Second Row (l-r): Lisa Kendrick, Jill Mitchell, Tena DeVore, Tammye Jenkins, Sherelle Warren, Tari Phillips and Stacey Ford.

NO.	NAME	HT.	CL.	POS.	Hometown/School
12	Lisa Kendrick	5-11	Jr.	F	Albany, GA
14	Carla Green	5-9	Sr.	G	LaGrange, GA
21	Sharon Baldwin	5-8	Jr.	G	Marietta, GA
23	Lady Hardmon	5-10	Fr.	F-G	Atlanta, GA
25	Kim Berry	5-7	So.	G	Greenback, TN
30	Adrienne Shuler	5-6	So.	G	Bowman, SC
33	Wendy Walker	5-4	Jr.	G	Perry, GA
44	Tena DeVore	6-1	So.	F	Alpharetta, GA
53	Stacey Ford	6-2	So.	F	Anderson, SC
54	Sherelle Warren	6-3	Jr.	C	Dyersburg, TN
55	Tammye Jenkins	6-4	So.	F-C	Dawson, GA

Head Coach: Andy Landers

Assistants: Eileen Canty, Bernadette Locke, Kim Weems

UNIVERSITY OF KENTUCKY LADY KATS

Coach: Sharon Fanning Assistants: Cindy Hauserman, Andy Barnes, Jane Dalton

No.	Player	Position	Field Goals	Free Throws	Fouls	Totals			
						FG/2	FG/3	FT	TP
3	Lora Spencer,6-1,Jr.,C			111111111111	12345				
4	Ruth Ann Mountain,5-8,Jr.,G/F			111111111111	12345				
5	Theresa Stewart,5-4,Jr.,G			111111111111	12345				
10	Stacy McIntyre,5-8,Fr.,F			111111111111	12345				
11	Malinka Salhi,5-4,Jr.,G			111111111111	12345				
12	Kristi Cushenberry,5-9,Fr.,G/F			111111111111	12345				
13	Lisa Ellis,6-6,Jr.,C			111111111111	12345				
14	Jamie Hobgood,5-9,Fr.,G/F			111111111111	12345				
15	Jodie Whitaker,5-7,Sr.,G			111111111111	12345				
21	Tracye Davis,5-8,So.,G			111111111111	12345				
24	Vanessa Foster-Sutton,6-0,Jr.,C			111111111111	12345				
32	Kris Miller,5-4,Jr.,G			111111111111	12345				
34	Pam Shrum,6-0,Sr.,F/C			111111111111	12345				
55	Angel Stevens,6-1,So.,C			111111111111	12345				

University of Kentucky Lady Kats
vs
Georgia
Saturday, February 4, 1989
7:30 p.m. Memorial Coliseum

GEORGIA

Coach: Andy Landers Assistants: Eileen Canty, Bernadette Locke, Kim Weems

No.	Player	Position	Field Goals	Free Throws	Fouls	Totals			
						FG/2	FG/3	FT	TP
12	Lisa Kendrick,5-11,Jr.,F			111111111111	12345				
14	Carla Green,5-9,Sr.,G			111111111111	12345				
21	Sharon Baldwin,5-8,Jr.,G			111111111111	12345				
23	Lady Hardmon,5-10,Fr.,F-G			111111111111	12345				
25	Kim Berry,5-7,So.,G			111111111111	12345				
30	Adrinne Shuler,5-6,So.,G			111111111111	12345				
33	Wendy Walker,5-4,Jr.,G			111111111111	12345				
44	Tena DeVore,6-1,So.,F			111111111111	12345				
53	Stacey Ford,6-2,So.,F			111111111111	12345				
54	Sherelle Warren,6-3,Jr.,C			111111111111	12345				
55	Tammye Jenkins,6-4,So.,F-C			111111111111	12345				
				111111111111	12345				
				111111111111	12345				
				111111111111	12345				