

# KENTUCKY Kerueel ADD Drop

**FRi**  
January 10, 1997  
**IN THE PAST**  
The Crucible hits the big screen. See page B1

ESTABLISHED 1894

UNIVERSITY OF KENTUCKY, LEXINGTON, KENTUCKY

INDEPENDENT SINCE 1971

## No snow now, but UK ready for the worst

By Kathy Reding  
News Editor

Wednesday's warnings of snow did not materialize in Lexington yesterday beyond a light coating of ice, but with two more months of winter ahead and snow forecast for the weekend, severe weather should not be counted out of the forecast.

UK has its own severe winter weather procedures — ranging from closing some University operations to canceling early classes — that it follows in the event the campus and local area are hit with snow or ice.

Joe Burch, vice president for University relations, makes the closing and postponement decisions.

Burch said since some operations of UK, such as the Chandler Medical Center, residence halls and the Physical Plant Division never close, the administration tries to keep classes on schedule as well.

### When it does snow...

UK outlined its procedures in a memo to faculty and staff.

▼ **Since major units of the University must remain open, the University will make every effort to ensure that all offices remain open and that classes meet as scheduled.**

▼ **The cancellation or delay of classes announcements will normally be made by 6 a.m. ... from UK TV cable channel 16 or the UK Infoline at 257-5684.**

▼ **Employees who are required to report under Plan B ... must report even under these conditions.**

"Our general rule is if the community is open for business, UK is open for business," Burch said.

"Actually UK is always open, no matter what. Some people think we're just an organization that has classes going on. We've got a medical center and hospital that never close."

He said it is important to keep classes on schedule for the many students who live on campus or nearby, even though some students and faculty who live further away may not be able to get to campus.

"There's never a time when everybody is here," Burch said. "It's just better to plow on and keep the schedule we have."

Burch said University employees and students are expected to try to meet their classes or be at work, but they make their own decisions



**SCRAPING AWAY** Biology junior Beth Mobley removes ice from her car after the campus was dusted with snow and freezing rain Wednesday night.

regarding personal safety. "We're dealing with an older group of people who can make their own decisions on conduct and safety," he said.

If cancellation or delay of classes is imminent, Burch said, after reviewing weather reports and road conditions from UK Police and information concerning local business operations, UK will normally make the announcements by 6 a.m. through local media.

The most up-to-date information can be obtained from UK TV on cable channel 16 or through the UK Infoline at 257-5684.

Even when classes are canceled or delayed and offices closed, certain employees whose jobs are considered essential are required to report under a Plan B. Supervisors develop their own Plan B schedules.

UK closed due to snow Jan. 18, 1994 after 10.2 inches of snow fell in Lexington over the Martin Luther King Jr. holiday.

A state of emergency was declared in Kentucky, and the interstate highways were closed. It was the first time the classes had been called off and most offices closed since 1978.

Burch said the city asked UK to close to help reduce traffic. Most parking lots were also filled with snow, so employees and commuters had no place to park.

He said both the city and UK would be more prepared to handle a snow emergency this year if one occurred because several have occurred since 1994. Burch said prior to the 1994 storm Lexington had not suffered a significant one and many UK and Lexington workers were not used to dealing with all the snow.

Burch said college students should not compare themselves to students in elementary and secondary schools when those schools close. "We don't have a schedule to make up the days," Burch said.



**CLEANING UP** William Thomas (right) polishes the floor before students invade campus next week. Jeffello Jones (above) makes sure the bathrooms are clean as she mops beside the toilet in the Law Building. The Law Building is only one of many buildings and residence halls cleaned during the break.

## 'Eerie' silence fills empty UK buildings

PPD readies campus for students, classes

By Gary Wulf  
Associate News Editor

While students were looking forward to the freedom from exams and lectures during the long semester break, the time off for students meant something completely different for UK Physical Plant Division workers.

"It is a time we get to thoroughly clean," said Custodial Supervisor Inez Richards. "We don't consider this a time of relaxation."

Scrubbing and buffing classroom floors and cleaning bathrooms are jobs the custodians are unable to do during the semester while school is in session.

"There's enough work to keep

you busy," she said. George Brown, assistant superintendent of custodial services and PPD, agreed with her.

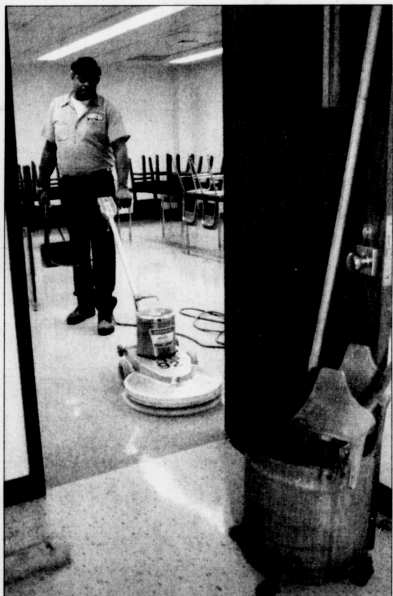
"The population goes down, but not the volume of work," he said.

Although school begins Wednesday, PPD already is preparing for the influx of students that will invade campus this weekend.

"The campus will come back to life, so everything we need to do will be done (today)," Brown said.

During the four-week break, the University was closed Dec. 24 and didn't open again until Jan. 2.

However, a skeleton crew of 15 custodians monitor the campus to ensure everything is well-stocked and cleaned for the



New Year. With snow and ice likely to be tracked into the buildings in the following months, the only thing to be done is to keep the floors dry and clear of debris.

Richards said because of the snow and ice in the winter months, she considers this one of the busier parts of the year for cleaning.

When students return to campus, it means back to the regular duties of sweeping floors and taking trash, but that doesn't bother Richards.

"If it weren't for the students," she said, "we wouldn't be here." Shasta Walker echoed those words, but for a different reason. "I'm bored," she said.

## Students find comfort with UK-VIP, Add/Drop

By Andrew Blankenship  
Contributing Writer

Having a class canceled is the last thing students want to hear as they relax during the winter break, but because of Add/Drop students get a second chance to fill that gaping schedule hole.

Add/Drop continues this week and gives students who have already registered the opportunity to add or remove classes from their schedule over the phone. But some students want a more personal touch when it comes to changing classes. Tired of frequently being cut off by the automated operator, communications junior Angela Swan said, "It would be better if we just had a human to talk to."

Still most students seem to find UK-VIP convenient.

"I think it's very convenient to have that option available to use," said Matt Matteson, a psychology junior.

"We're trying to get students a good impression of VIP," said Assistant Registrar Michelle Nordin. "And I think most students have a good impression of the phone system."

Students who registered in November may alter their spring schedule between Jan. 10-11 and 13-22. For students who did not priority register, but still plan to attend spring classes at UK, late registration will run Jan. 15-22. Students registering on these dates will be assessed a \$40 late fee.

The hall housed anywhere from five to 20 students during the four week break, Walker estimated.

These students included international students, students who did not go home and athletes.

With the absence of so many students, Walker said it is eerie staying in such an empty building.

To relieve herself of boredom, Walker said she entertained herself by watching movies.

"This dorm is usually lively," she said, "but there's no one here."

UK-VIP, or University of Kentucky Voice Information Processing Network, is operational Monday through Friday 7 a.m. - 8 p.m., except Jan. 13 and 14 when it will be open 1 - 8 p.m. The number for UK-VIP is 257-7000 or 7-7000 if calling on campus.

UK-VIP, first used in fall of 1993, allows students to register by phone. Before the dawn of the system, students registered at terminals and stood in long lines.

Hearing impaired and other students unable to use the telephone may come to the registrar's office during their registration windows.

If you need help with registration, go to 5 Funkhouser Building or call 257-7173 between 8 a.m. and 4:30 p.m., Monday through Friday.

The registrar's office offers several suggestions to help students deal with UK-VIP.

▼ Before dialing, have your desired schedule written out and have the Spring 1997 Schedule of Classes at hand.

▼ If you have a problem accessing UK-VIP, try another phone. Do not use the cordless or cellular phones and do not use automatic busy redial or any type of redial function.

▼ Know your PAC (Personal Access Code) which allows you into the UK-VIP network. If you do not know your PAC, you should go to the registrar's office with a photo ID.

▼ Remember to press the pound key (#) after each entry.

**Don't let me forget...**

Last day to drop a class with a full refund - Jan. 14

Last day to add drop with UK-VIP - Jan. 22

Need to pay fees - Jan. 29

Last day to drop class without a 'W' grade - Feb. 5

Last day to withdraw from a class - March 14

ERIC SCHOENBORN *Kerueel staff*





Table of race results for January 10, 1997, including race numbers, horse names, jockeys, trainers, and finishing positions.

Continuation of race results table from the previous section, listing race details and participant information.

Continuation of race results table, listing race details and participant information.

Advertisement for Allied Sporting Goods, featuring a variety of athletic footwear and equipment. Includes logos for brands like Nike, Adidas, and Reebok, and text: 'Selection, Service & Price! and a 10% Student/Faculty Discount.'

Advertisement for The Princeton Review MCAT preparation. Features an image of the MCAT review book and text: 'THE MCAT JUST GOT MUCH EASIER TO SWALLOW.' Includes contact information: '(800) 2-REVIEW • www.review.com'.

Continuation of race results table, listing race details and participant information.

Advertisement for the movie 'The Relic' (Paramount Pictures). Features a large image of a woman's face and text: 'THE NEXT EVOLUTION IN TERROR.' Includes the title 'THE RELIC' and release date 'JANUARY 10'.

Vertical column of small text on the right edge of the page, likely a page number or index reference.

Table with columns for call number, service type, and time slot. Includes entries like 00613 ASC 380 001 10, 00614 ASC 396 001 10, etc.

Table with columns for call number, service type, and time slot. Includes entries like 00692 CE 651 001 7, 00697 CE 652 001 7, etc.

Table with columns for call number, service type, and time slot. Includes entries like 01077 COM 101 001 34, 01078 COM 101 002 2, etc.

Table with columns for call number, service type, and time slot. Includes entries like 06013 ECO 463 001 5, 06014 ECO 467 001 1, etc.

Table with columns for call number, service type, and time slot. Includes entries like 1230PM 0145PM, 1230PM 0150PM, etc.

Table with columns for call number, time, and frequency. Includes entries like 05549 EDS 514 201 5\* 3.0 M 0730PM 1000PM.

Table with columns for call number, time, and frequency. Includes entries like 01794 EM 302 002 11 3.0 MWF 0100PM 0150PM.

Table with columns for call number, time, and frequency. Includes entries like 02124 EPE 785 001 9 3.0 TBA TBA.

Table with columns for call number, time, and frequency. Includes entries like 02336 FSC 538 001 25 4.0 MWF 1000AM 1050AM.

Table with columns for call number, time, and frequency. Includes entries like 02662 02662 02662 02662.

02660 HIS 351 001 2*	3.0 T	0300PM 0450PM	05923 ISC 451 001 3*	3.0 TR	1100AM 1215PM
02662 HIS 352 401 3*	3.0 W	0600PM 0830PM	05927 ISC 491 002 1*	2.0 TR	0330PM 0550PM
02664 HIS 395 001 13	1.0 TBA	TBA	02784 ISP 499 001 29	12.0 TBA	TBA
02665 HIS 395 002 14	1.0 TBA	TBA	02784 ISP 599 001 23	1.0 TBA	TBA
02666 HIS 397 001 6	3.0 TBA	TBA	02786 JAT 101 002 2*	3.0 MW	0900AM 0950AM
03530 HIS 463 001 2*	3.0 TR	1230PM 0145PM	02787 JAT 101 003 1*	3.0 MW	0900AM 0950AM
05273 HIS 504 001 20	3.0 TR	0330PM 0445PM	02788 JAT 101 004 22	3.0 MW	0900AM 0950AM
05274 HIS 535 001 5*	3.0 MWF	0200PM 0250PM	02788 JAT 101 005 1*	3.0 MW	0900AM 0950AM
05275 HIS 543 001 2*	3.0 MWF	1000AM 1050AM	02790 JAT 201 001 6	3.0 TR	0300PM 0445PM
05276 HIS 549 001 1*	3.0 MWF	0200PM 0250PM	02793 JAT 204 003 1*	3.0 TR	0900AM 1120AM
05280 HIS 563 001 10	3.0 TR	1230PM 0145PM	02794 JAT 204 004 1*	3.0 TR	1130AM 0150PM
02681 HIS 584 001 4*	3.0 TBA	0315PM 0315PM	02798 JAT 300 001 25	3.0 TR	0330PM 0445PM
02682 HIS 586 001 8	3.0 TR	0200PM 0315PM	02813 JAT 420 001 6	3.0 TR	1230PM 0145PM
05283 HIS 595 001 15	3.0 MWF	0100PM 0150PM	02819 JAT 497 005 11	1.0 MW	0200PM 0250PM
05284 HIS 606 001 5*	3.0 R	0300PM 0450PM	06186 JAT 497 006 5*	3.0 MW	0900AM 1015AM
02685 HIS 613 001 4*	3.0 TBA	0100PM 0250PM	05691 JAT 499 002 3*	3.0 T	0300PM 0300PM
05284 HIS 615 001 7	3.0 W	1200PM 0150PM	06338 JAT 504 001 20	3.0 T	0600PM 0830PM
05462 HIS 625 001 3*	3.0 TBA	TBA	05797 JAT 545 001 16	3.0 MW	0900AM 0950AM
05285 HIS 638 001 2*	3.0 TBA	0200PM 0300PM	02832 JAT 599 002 2*	3.0 M	0900AM 0950AM
02688 HIS 650 001 4*	3.0 W	0400PM 0550PM	02833 KHP 100 001 5*	1.0 TR	0100PM 0215PM
02689 HIS 650 002 8	3.0 R	0100PM 0250PM	02834 KHP 101 001 20	1.0 MWF	0630AM 0720AM
02692 HIS 695 001 8	1.0 TBA	TBA	02835 KHP 103 001 17	1.0 MWF	0630AM 0720AM
02693 HIS 695 002 16	1.0 TBA	TBA	02836 KHP 106 002 12	1.0 MWF	0900AM 0950AM
02694 HIS 700 001 6	3.0 R	0100PM 0250PM	02839 KHP 106 003 11	1.0 TR	0100PM 0215PM
05287 HIS 712 001 9	3.0 T	1000AM 1150AM	02840 KHP 106 004 11	1.0 TR	0800AM 0915AM
02698 HIS 748 001 13	0.0 TBA	TBA	02841 KHP 107 001 24	1.0 TR	0630AM 0745AM
02699 HIS 749 001 19	0.0 TBA	TBA	02842 KHP 107 002 22	1.0 MWF	0900AM 0950AM
02700 HIS 758 001 6	1.0 TBA	TBA	02843 KHP 107 003 27	1.0 TR	0930AM 1045AM
02701 HIS 769 001 20	0.0 TBA	TBA	02844 KHP 114 002 19	1.0 MWF	0900AM 0950AM
02702 HSM 200 001 2*	C	0415PM 0515PM	02845 KHP 114 003 14	1.0 MWF	0900AM 0950AM
02703 HMM 497 001 7	3.0 TBA	TBA	02846 KHP 114 004 4*	1.0 TR	0930AM 1045AM
05533 HMT 420 001 21	3.0 MWF	1000AM 1050AM	02847 KHP 114 005 6	1.0 TR	0100PM 0215PM
02706 HMT 488 001 6	3.0 TR	0200PM 0315PM	02851 KHP 119 001 9	1.0 MWF	0900AM 0950AM
02707 HCR 102 001 2*	3.0 MWF	0900AM 0950AM	02852 KHP 120 003 23	1.0 MWF	0900AM 0950AM
02723 HCR 202 006 2*	3.0 TR	1230PM 0145PM	02856 KHP 120 006 2*	1.0 MWF	1000AM 1050AM
03346 HCR 202 010 16	3.0 TR	1230PM 0145PM	02863 KHP 121 001 18	1.0 TR	1000AM 1050AM
05832 HCR 301 001 2*	3.0 W	0200PM 0400PM	02864 KHP 122 001 2*	1.0 TR	1230PM 0145PM
05833 HCR 301 002 7	3.0 TR	0300PM 0450PM	02865 KHP 126 001 6	1.0 MWF	0900AM 0950AM
02727 HCR 333 001 73	1.0 TBA	TBA	02866 KHP 126 002 1*	1.0 MWF	1000AM 1050AM
02728 HCR 395 001 1	3.0 TR	1100AM 1150AM	02867 KHP 126 003 1*	1.0 MWF	1100AM 1215PM
02729 HCR 396 001 16	6.0 TBA	TBA	02872 KHP 129 001 29	1.0 W	0330PM 0600PM
02730 HCR 332 001 15	2.0 TR	1000AM 1050AM	02873 KHP 131 401 12	1.0 MW	0800PM 0930PM
02731 HCR 399 001 15	1.0 TBA	TBA	02874 KHP 132 001 17	1.0 MWF	0900AM 0950AM
06110 HOR 402 001 3*	3.0 MW	1000AM 1050AM	02875 KHP 134 001 2*	1.0 TR	1230PM 0145PM
02733 HOR 450 001 7	3.0 TR	1100AM 1150AM	02876 KHP 144 401 30	1.0 MW	0930PM 1030PM
06111 HOR 451 001 2*	3.0 MW	1200PM 0250PM	02884 KHP 156 001 16	1.0 TBA	0100PM 0250PM
02735 HOR 525 001 16	3.0 TR	0900AM 0950AM	02885 KHP 157 001 12	2.0 TR	1000AM 1150AM
02736 HOR 582 001 18	1.0 TBA	1200PM 1250PM	02890 KHP 182 001 21	2.0 TR	0400PM 0550PM
02737 HOR 582 002 8	1.0 TBA	1200PM 1250PM	02902 KHP 294 001 25	2.0 MWF	1000AM 1050AM
02738 HOR 582 003 19	1.0 TBA	1200PM 1250PM	02903 KHP 300 001 11*	3.0 TR	1100AM 1215PM
06234 HOR 597 001 7	2.0 M	0100PM 0150PM	02906 KHP 330 001 11	3.0 TR	0930AM 1045AM
02741 HOR 623 001 1*	3.0 MWF	1100AM 1150AM	02907 KHP 344 001 18	3.0 TR	0100PM 0250PM
02742 HOR 660 001 9	3.0 MWF	1200PM 1250PM	02908 KHP 360 001 19	3.0 MWF	1000AM 1200PM
06292 HOR 667 001 9	3.0 MWF	1000AM 1050AM	02909 KHP 361 001 19	1.0 W	1200PM 1250PM
02743 HOR 748 001 10	0.0 TBA	TBA	02910 KHP 362 001 17	1.0 W	1200PM 1250PM
02744 HOR 758 001 9	1.0 TBA	TBA	02911 KHP 369 001 18	3.0 TBA	TBA
02745 HOR 770 001 15	1.0 TBA	TBA	02912 KHP 371 001 18	3.0 TBA	TBA
02746 HOR 772 001 5*	1.0 F	0200PM 0250PM	02913 KHP 380 001 10	2.0 MW	0100PM 0150PM
02747 HOR 772 002 4	3.0 TR	0300PM 0350PM	02915 KHP 392 001 25	2.0 MWF	1100AM 1150AM
02748 HOR 790 001 9	1.0 TBA	TBA	05626 KHP 393 001 14	3.0 TR	1230PM 0145PM
02750 HSE 595 001 8	1.0 TBA	TBA	02916 KHP 395 001 22	3.0 TBA	0300PM 0500PM
02756 HSM 241 401 45	3.0 M	0600PM 0830PM	02922 KHP 508 001 10	1.0 TR	0300PM 0315PM
02758 HSM 260 001 16	1.0 F	0100PM 0215PM	05629 KHP 546 001 1*	1.0 TR	0300PM 0500PM
02759 HSM 354 401 11	3.0 W	0600PM 0830PM	02923 KHP 546 401 5*	1.0 T	0600PM 0830PM
02760 HSM 355 001 7	3.0 TR	0930AM 1045AM	02924 KHP 546 402 18	1.0 W	0630PM 0900PM
02761 HSM 450 001 9	3.0 TR	0930AM 1045AM	02925 KHP 546 403 26	1.0 M	0600PM 0830PM
02762 HSM 451 001 27	3.0 MW	0300PM 0415PM	02927 KHP 570 401 17	3.0 R	0630PM 0900PM
02763 HSM 452 001 8	3.0 TR	0200PM 0315PM	02929 KHP 579 401 12	3.0 M	0600PM 0830PM
02764 HSM 510 001 21	3.0 MW	0200PM 0315PM	02930 KHP 585 401 17	3.0 M	0630PM 0900PM
02766 HSM 511 001 10	1.0 TBA	TBA	02932 KHP 606 401 23	3.0 F	0600PM 0830PM
06148 HSM 603 401 5*	3.0 M	0600PM 0830PM	02933 KHP 615 001 11	3.0 MW	0430PM 0545PM
06147 HSM 660 401 5*	3.0 R	0600PM 0830PM	02934 KHP 620 401 28	3.0 MW	0530PM 0645PM
06149 HSM 711 001 5*	3.0 TBA	TBA	06230 KHP 644 001 11	3.0 MW	0300PM 0415PM
06129 HSM 785 001 5*	1.0 TBA	TBA	02937 KHP 685 001 2*	3.0 T	0400PM 0630PM
02767 HSM 842 001 4*	1.0 TR	0330PM 0445PM	02938 KHP 687 001 10	1.0 TBA	TBA
02768 HSM 843 001 30	1.0 TBA	TBA	02940 KHP 695 001 18	1.0 TBA	TBA
02769 HSM 844 001 5*	1.0 TR	0330PM 0445PM	02941 KHP 696 001 10	1.0 TBA	TBA
05801 ISC 161 001 10	3.0 MWF	0100PM 0240PM	02942 KHP 748 001 10	0.0 TBA	TBA
05928 ISC 261 001 11*	3.0 M	0100PM 0240PM	02943 KHP 749 001 8	0.0 TBA	TBA
06035 ISC 311 001 4*	1.0 TR	0930AM 1045AM	02944 KHP 768 001 5*	1.0 TBA	TBA
05803 ISC 341 001 28	3.0 TR	0930AM 1045AM			
05915 ISC 371 8	3.0 MW	0400PM 0550PM			
05919 ISC 431 001 13	3.0 TR	0900AM 1050AM			
05921 ISC 441 001 2*	3.0 TR	0200PM 0315PM			

See ADD/DROP on B2

**The Welcome Back edition of the Kentucky Kernel publishes Wednesday, January 15th. Deadline for advertising is Monday, January 13th by 3:00 p.m. Don't be left out in the cold! Call 257-2872 today!**

**George Frakes Jewelry Repair & Fine Jewelry**

153 Patchen Village • 266-7977  
Layaway • Ring sizing while-u-wait!  
Remounting year round!

Check out these cool deals!

**\$2.99 Value Meals**

**Blazer Courtyard**  
Entree, 2 vegetables & a roll

**Block & Barrel @ Ag Science North & Erickson Hall**  
1/2 sandwich, soup & an apple

**Commons Market & Student Center Food Courts**  
2 slices of pizza & med. soft drink

**K-Lair Grill & Library Deli**  
2 chili dogs, chips & med. soft drink

Value meals good through 1/17/97.

**GATEWAY NEWSTANDS**

Have you been playing phone tag too much? Answering machine to answering machine!

Well we've got the solution to that—  
A renegade Pager!  
For only \$71, you get the pager, activation fee & 3 months air time!

While you're here, check out our Kentucky Wildcat souvenirs and Holiday Specials on pre-paid phone cards.

We also have snacks and pop!  
Stop on by—we're in the Fayette Mall.

**GATEWAY NEWSTAND,**  
(In front of foot locker before Sears)

**SURF THE NET**

**RAY LIOTTA LAUREN HOLLY**

**TURBULENCE**

RYSEER ENTERTAINMENT PRESENTS A MARTIN RANSHOFF PRODUCTION RAY LIOTTA LAUREN HOLLY "TURBULENCE" AND HECTOR ELZONDO MUSIC BY SHIRLEY WALKER COSTUME DESIGNER JOHN DUFFY, A.C.E. DIRECTOR OF PHOTOGRAPHY LLOYD AHERN II, A.S.C. EXECUTIVE PRODUCERS KEITH SAMPLES PRODUCED BY MARTIN RANSHOFF DAVID VALDES WRITTEN BY JONATHAN BRETT DIRECTED BY ROBERT BUTLER

IN THEATRES 1-10-97

Internet

**GET TANGLED IN THE WEB**

Check out the Kentucky Kernel's National Award Winning On-line Edition!

[www.kernel.uky.edu/](http://www.kernel.uky.edu/)

Winner 1996 College Press Network "Best of Show"

Winner 1995 Associated Collegiate Press "Best of the Net"

**KeNTzCKY Kernel**

"On some days, the Kernel site looks better than USA Today Online."

Editor & Publisher Interactive, Nov. 27, 1996  
(quoting Mary Hoppin, Image Publishing, Calif.)

# START THE SEMESTER

## *With Savings*

from the

# UK BOOKSTORE

YOUR *official* BOOKSTORE

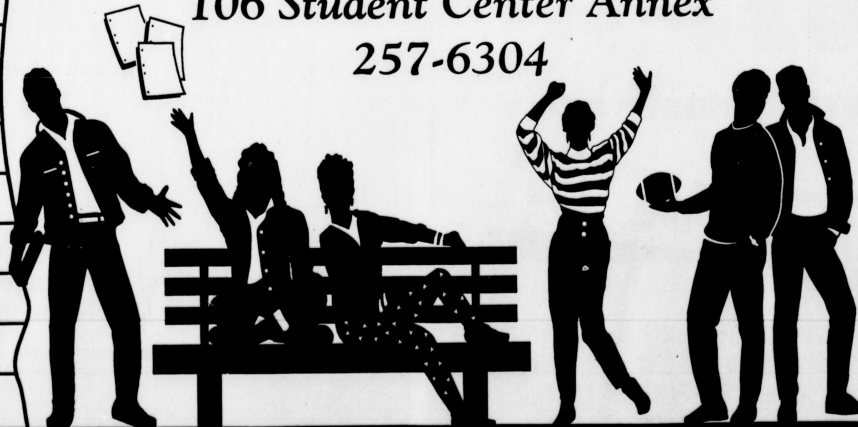
ONE-STOP SHOPPING  
for all of your back-to-school needs

- MORE USED and new textbooks
- LOWEST PRICES on ALL UK and LCC books
- GREAT selection of school supplies
- BEST selection of trade and reference materials available on the UK campus

### BOOK RUSH HOURS

January	11	9 a.m. until 5 p.m.
	12	11 a.m. until 6 p.m.
	13-16	7:45 a.m. until 9 p.m.
	17-18	7:45 a.m. until 5 p.m.

106 Student Center Annex  
257-6304





# KENTUCKY KENNEDY ADD section

ESTABLISHED 1894

UNIVERSITY OF KENTUCKY, LEXINGTON, KENTUCKY

INDEPENDENT SINCE 1971

# THE CRUCIBLE

## Miller's play an Oscar contender

By Dan O'Neill  
Arts Editor

Arthur Miller's searing Broadway production about witchcraft, has become a staple of second-year high school English students since its 1953 release. Sophomores who think they're too cool for this boring literature may be in for a rude awakening.

With the film version hitting the area today, those same students who cringe at cultural experiences will be brought to the startling realization that "This is cool, I am not."

The film, originally slated for a Thanksgiving release, makes its long-awaited Lexington debut with a bang. The sizzling tale of false accusations involving witchery and deals with the devil finds a setting in the small puritan town of Salem, Mass., in 1692.

Oscar darlings Winona Ryder and Daniel Day-Lewis star as the accuser and the accused, Abigail Williams and John Proctor, respectively. Their screams are loud, their eyes burn with rage and the confrontations crackle with intensity. They are flat-out good. Even with the stars in top form, the more memorable roles come from the older supporting crew. Paul Scofield as Judge Danforth and Joan Allen as Elizabeth Proctor turn in brilliant performances. Both are coming off Academy Award nominations and both recently earned Golden Globe nominations for their work in *The Crucible*.

Karron Graves, best known for her appearances on "Saturday Night Live," makes an impressionable film debut as Mary Warren. Other cast notables include veterans Bruce Davison as the deceptive Reverend Parris and Jeffrey Jones as the equally unlikable Thomas Putnam. Although Miller originally wrote the play with underlying themes responding to Joseph McCarthy's communist hysteria, the material is timeless and holds up very well among contemporary audiences. The performers rise to the occasion but the true beauty of the film lies in Miller's disturbing, introspective story.

Nicholas Hytner, who brings experience with stage-to-screen adaptations (*The Madness of King George*), directed the film and worked with Miller to write the screenplay. His stylized camera work and



**RYDERS ON THE STORM** Daniel Day-Lewis (above, center) is taken into custody after accusations of associating with satan. The film opens today at Woodbill.

ability to capture "the moment," did wonders in setting the play into motion. *The Crucible*, in every sense, moves like a movie rather than a stage production.

Taking on an emotionally charged piece like this, Hytner runs the risk of excessive melodrama and overacting. But the only excess in this film appears when makeup and costume designers go a little too far with the wretched looks by placing inordinate amounts of scum on the teeth of the actors. Besides the film's ability to move me, I really wanted to brush my teeth after seeing Day-Lewis and his hygienic nightmare.

Expect the film to be seen in schools as teaching material and the dentist's office as a scare tactic. Take the family and friends and be one of those who can say "I saw that" when the Oscar nominations are announced next month.



MOVIE review

★★★★1/2

*'The Crucible'*

directed by Nicholas Hytner

## Haskins Rhode Island-bound

By Chris Easterling  
Sports Editor

Two years ago, he was the player all the fans wanted running the Wildcat offense. Now, Billy Jack Haskins has grown so frustrated with his situation at UK that he is transferring to the University of Rhode Island.

The fifth-year senior from Paducah Tilghman High School made the decision after UK head football coach Hal Mumme told Haskins that Tim Couch would be the Cats' starter in the upcoming season. Mumme asked Haskins to move to the H-Back position in UK's new wide-open offensive attack.

"Even after the coaching change I had intended to stay at the University of Kentucky," he said in a prepared statement, "assuming I would be allowed to compete for starting quarterback again."

"Contrary to some of the previous reports, I was never beaten out on the football field nor was my scholarship revoked," he said. "I was simply not allowed to compete for the job. I walked into (Mumme's) office and asked 'Is there a chance I can play quarterback?' He said 'There is none.'"

In the offense Mumme brings from Division II Valdosta State, the H-Back position is much like a flanker in that it can both run pass routes like a receiver and carry the football like a running back. It must also read defenses and react accordingly.

"I know that Billy Jack Haskins gave great effort and served the University of Kentucky well," Mumme said in a statement released on Jan. 4. "I am sad to see him go and wish him the best at the University of Rhode Island. I hope he will continue to hold a dear spot in his heart for Kentucky as I know the people at UK do for him."

Rhode Island is a Division I-AA school, which means Haskins will not have to sit out a year after transferring. If he would have transferred to a Division I-A school, by NCAA regulations, a player must sit out one year.

The Rams, a member of the Yankee Conference, went 4-7 last year.

"It's a good fit for me," he said. "The offense they

run is pro-style. They're pretty balanced."

Haskins also considered Villanova, Delaware, Richmond, Buffalo and Murray State. Murray was eliminated from the running after head coach Houston Nutt left to coach at Boise State.

"I talked to some former coaches, Coach (Bill) Curry, Coach (Ellor) Uzelac, and they helped me with some friends they had in I-AA ball," he said. "They contacted a few guys they respected and places where they felt I could win."

In his career at UK, Haskins started 18 games, with the Cats registering an 8-10 mark in those games. He initially gained the starter's role in the third game of the 1995 season against Indiana and led UK to two straight wins. UK finished that season with a 4-7 record.

Last year, Haskins completed 95-of-175 passes, with four touchdowns and four interceptions. In 1995, he set a single-season school record for completion percentage by connecting on 93-of-154 for 1,176 yards with four touchdowns and six interceptions.

He also had 1995's Most Inspirational Play, which occurred in the fourth quarter against Tennessee at Commonwealth Stadium.

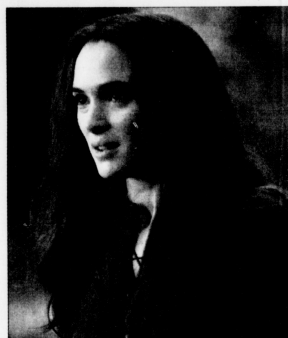
Playing with a separated shoulder, Haskins ripped off a pinball-like 47-yard touchdown run that gave the Cats a short-lived lead over the Volunteers.

But throughout last season, the state's 1992 Mr. Football found himself under constant pressure from opposing defensive linemen and felt the heat of playing ahead of Couch, the 1995 National High School Player of the Year.

"At times, the (quarterback) competition was hard," Haskins said. "Sometimes, you'd be looking over your shoulder trying to get at halftime and scared to make a mistake."

Haskins started nine games during the 4-7 1996 season. The only games he did not start were a 65-0 romp by eventual national champion Florida in Gainesville and in a 41-14 loss at LSU, the Southeastern Conference Western Division Co-Champions.

He did say that he had no bad feelings toward either UK or Couch, but hasn't spoken to Mumme



**GOODBYE** After starting 18 games in three years for UK, Billy Jack Haskins is leaving for the East Coast.

Since Dec. 3. That was the day in which Mumme had met with him to talk about the position change.

"I would have liked to finish my career here (at UK)," he said.

"But I'm not the kind of player that wanted to ride my career out. I played too much and worked too hard to stay at UK as a token."

**UK signs receiver**

Lance Mickelson, a 6-foot-3, 180-pound junior college wide receiver, is Mumme's first scholarship signee.

Mickelson played his junior college football at Snow College in Ephraim, Utah. As a sophomore, he caught 38 passes for 899 yards and 14 touchdowns.

## 'Purple' rides into Lynagh's

By Rodman P. Botkins  
KEG Editor

Oodles of southern-fried Grateful Dead wannabe bands have been scampering out of the Southeast like a horde of rabid opossums. Few develop a sound that is unique. Purple Schoolbus is one of them.

Purple Schoolbus is not really a band but an earthy funk orchestra. One unique quality of the band is its technical proficiency, which is reflected in its gift for rhythm. They play like Juillard graduates and blend as if they had been playing together for years. Purple Schoolbus' first live performance was opening for Widespread Panic over two years ago. Since their debut, they have cut two CDs: a self-titled, 10-track album in 1994 and the 11-track *Phoenicia Blind* in 1995.

A seven-player ensemble make up the Purple Schoolbus band, which rolls out tunes throughout the album. Two drummers, Todd May and Scott Scala, lay a subtle but solid rhythm foundation for the band. The rhythm section is rounded out by Bernie Taylor on bass. Mark Harris plays tenor and soprano saxophones. Keyboards and harmonica are mastered by Jesse Jennings. Micah Peedin and Kevin Sledge comprise a seamless guitar team.

Purple Schoolbus travels a lyrical route through inner space. All of the band contributes to the lyric writing, even if they aren't necessarily singing. The first track on *Phoenicia Blind*, "All In Your Head," explores the sheer monotony of being human. "Stompin' on Saxes" is the most danceable tune on the album because of its groovy rhythm. "Ride So High" is equally gifted and is one of the better songs on the album. Its lyrics are simple and the music sounds uncomplicated, reflecting the spirit of the song.

"Sparrow Song" has a warm, familiar sound. Listeners can smell this song and visualize a chorus of Hobbit characters scatted around a table toasting and singing. "Fool" is another interesting track with an excellent jam in the middle. Second to "Ride So High," "Fool" exemplifies the heart of the Purple Schoolbus style.

"Down On Your Knees" is the most Deadhead-ish song on the album. The song includes impressive keyboard maneuvers during the chorus.

Nearly all of *Phoenicia Blind's* tracks run over four minutes. It makes for a long album: a monument to the band's creativity since it produced a 10-track album only a year earlier plus the heavy touring schedule.



LOOKING ahead

Purple Schoolbus will play Saturday night at Lynagh's. Showtime 8 p.m. Cover \$3.

## Roberts having frustrating year

By Rob Herbst  
Weekend Sports Editor

Before the start of the UK women's basketball season it was a no-brainer as to who would lead the Cats. UK junior forward Shaunda Roberts entered the year as UK's top offensive threat after averaging over 17 points per game last season. She was one of two returning starters from the 1995-96 season. The Toledo, Ohio, native also led last year's squad in minutes played with over 35 minutes a game last year. Now Roberts is getting accustomed to spending time on the bench rather than the floor.

When healthy, Roberts did start early in the season. She missed one game and came off the bench for two games because of an injured back.

The back injury has plagued Roberts' throughout her career, especially this season, though she does not use that as a reason for lack of playing time.

"I don't know what the reason for that (the benching) is," Roberts said. "I don't think it has anything to do with my injury. I think it is just the coach's decision."

Roberts' last start came in a Dec. 15 loss to Indiana. She has come off the bench in six consecutive games including Wednesday's 65-54 loss to No. 8 Vanderbilt and may have had her best performance of the season. Roberts went 7-of-8 from the field for a game-high 19 points in 28 minutes of play in the loss to Vandy.

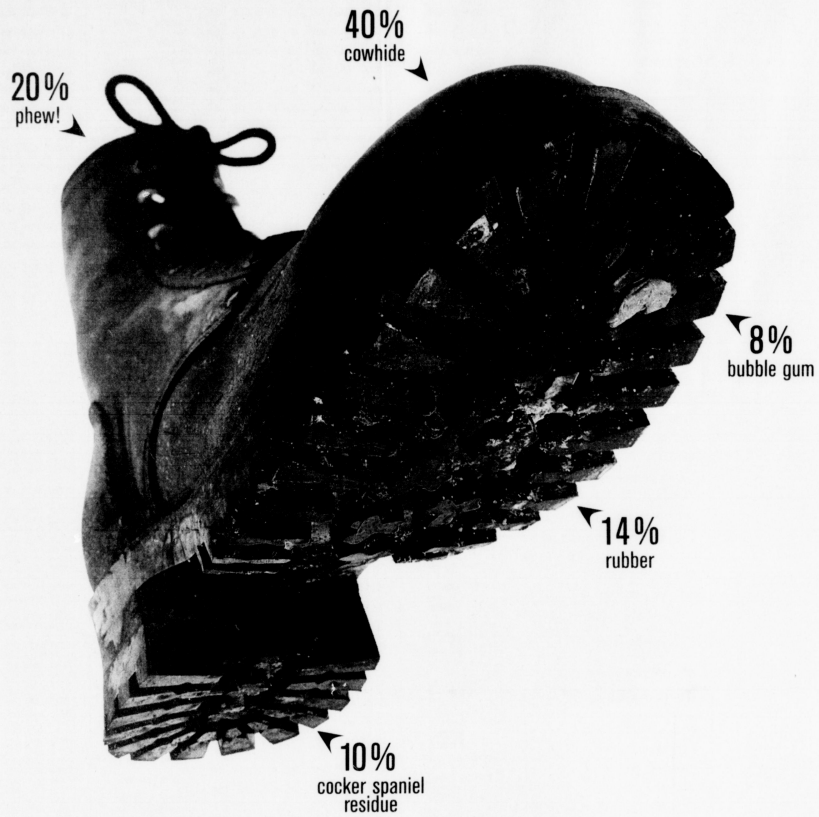
"That's what Shaunda is capable of doing but Shaunda doesn't come out every day and practice and play like that," UK head coach Bernadette Mattox said. "And she doesn't go out and play defense like she's capable of doing."

Mattox stresses bad defense is the reason Roberts is seeing more time on the pine.

"She hasn't played defense," Mattox said. "You gotta do both (offense and defense). A freshman is a freshman. It takes them time to learn, but she's a junior and she's got to know that."

Roberts has no idea whether she will continue to come off the bench but she uses the demotion as a learning experience. "I wouldn't say that it makes me work harder. I just use it as a learning tool," she said. "I really don't know the reason for it but I just have to go with the decision."





**1-800-COLLECT**®

**44%**  
SAVINGS

**Dial 1-800-COLLECT and save up to 44%.\***

\*For long-distance calls. Savings based on a 3-minute AT&T operator-dialed interstate call.

Main table containing multiple columns of text with alphanumeric codes, numbers, and names. The text is organized in a grid-like structure with varying column widths.

Vertical column of text on the right side of the page, containing alphanumeric codes and numbers, likely serving as a reference or index.

Table with columns for race number, time, and various codes. Includes entries for 03877, 03878, 03879, 03880, 03881, 03882, 03883, 03884, 03885, 03886, 03887, 03888, 03889, 03890, 03891, 03892, 03893, 03894, 03895, 03896, 03897, 03898, 03899, 03900, 03901, 03902, 03903, 03904, 03905, 03906, 03907, 03908, 03909, 03910, 03911, 03912, 03913, 03914, 03915, 03916, 03917, 03918, 03919, 03920, 03921, 03922, 03923, 03924, 03925, 03926, 03927, 03928, 03929, 03930, 03931, 03932, 03933, 03934, 03935, 03936, 03937, 03938, 03939, 03940, 03941, 03942, 03943, 03944, 03945, 03946, 03947, 03948, 03949, 03950, 03951, 03952, 03953, 03954, 03955, 03956, 03957, 03958, 03959, 03960, 03961, 03962, 03963, 03964, 03965, 03966, 03967, 03968, 03969, 03970, 03971, 03972, 03973, 03974, 03975, 03976, 03977, 03978, 03979, 03980, 03981, 03982, 03983, 03984, 03985, 03986, 03987, 03988, 03989, 03990, 03991, 03992, 03993, 03994, 03995, 03996, 03997, 03998, 03999, 04000, 04001, 04002, 04003, 04004, 04005, 04006, 04007, 04008, 04009, 04010, 04011, 04012, 04013, 04014, 04015, 04016, 04017, 04018, 04019, 04020, 04021, 04022, 04023, 04024, 04025, 04026, 04027, 04028, 04029, 04030, 04031, 04032, 04033, 04034, 04035, 04036, 04037, 04038, 04039, 04040, 04041, 04042, 04043, 04044, 04045, 04046, 04047, 04048, 04049, 04050, 04051, 04052, 04053, 04054, 04055, 04056, 04057, 04058, 04059, 04060, 04061, 04062, 04063, 04064, 04065, 04066, 04067, 04068, 04069, 04070, 04071, 04072, 04073, 04074, 04075, 04076, 04077, 04078, 04079, 04080, 04081, 04082, 04083, 04084, 04085, 04086, 04087, 04088, 04089, 04090, 04091, 04092, 04093, 04094, 04095, 04096, 04097, 04098, 04099, 04100.

Table with columns for race number, time, and various codes. Includes entries for 04092, 04093, 04094, 04095, 04096, 04097, 04098, 04099, 04100, 04101, 04102, 04103, 04104, 04105, 04106, 04107, 04108, 04109, 04110, 04111, 04112, 04113, 04114, 04115, 04116, 04117, 04118, 04119, 04120, 04121, 04122, 04123, 04124, 04125, 04126, 04127, 04128, 04129, 04130, 04131, 04132, 04133, 04134, 04135, 04136, 04137, 04138, 04139, 04140, 04141, 04142, 04143, 04144, 04145, 04146, 04147, 04148, 04149, 04150, 04151, 04152, 04153, 04154, 04155, 04156, 04157, 04158, 04159, 04160, 04161, 04162, 04163, 04164, 04165, 04166, 04167, 04168, 04169, 04170, 04171, 04172, 04173, 04174, 04175, 04176, 04177, 04178, 04179, 04180, 04181, 04182, 04183, 04184, 04185, 04186, 04187, 04188, 04189, 04190, 04191, 04192, 04193, 04194, 04195, 04196, 04197, 04198, 04199, 04200, 04201, 04202, 04203, 04204, 04205, 04206, 04207, 04208, 04209, 04210, 04211, 04212, 04213, 04214, 04215, 04216, 04217, 04218, 04219, 04220, 04221, 04222, 04223, 04224, 04225, 04226, 04227, 04228, 04229, 04230, 04231, 04232, 04233, 04234, 04235, 04236, 04237, 04238, 04239, 04240, 04241, 04242, 04243, 04244, 04245, 04246, 04247, 04248, 04249, 04250, 04251, 04252, 04253, 04254, 04255, 04256, 04257, 04258, 04259, 04260, 04261, 04262, 04263, 04264, 04265, 04266, 04267, 04268, 04269, 04270, 04271, 04272, 04273, 04274, 04275, 04276, 04277, 04278, 04279, 04280, 04281, 04282, 04283, 04284, 04285, 04286, 04287, 04288, 04289, 04290, 04291, 04292, 04293, 04294, 04295, 04296, 04297, 04298, 04299, 04300, 04301, 04302, 04303, 04304, 04305, 04306, 04307, 04308, 04309, 04310, 04311, 04312, 04313, 04314, 04315, 04316, 04317, 04318, 04319, 04320, 04321, 04322, 04323, 04324, 04325, 04326, 04327, 04328, 04329, 04330, 04331, 04332, 04333, 04334, 04335, 04336, 04337, 04338, 04339, 04340, 04341, 04342, 04343, 04344, 04345, 04346, 04347, 04348, 04349, 04350, 04351, 04352, 04353, 04354, 04355, 04356, 04357, 04358, 04359, 04360, 04361, 04362, 04363, 04364, 04365, 04366, 04367, 04368, 04369, 04370, 04371, 04372, 04373, 04374, 04375, 04376, 04377, 04378, 04379, 04380, 04381, 04382, 04383, 04384, 04385, 04386, 04387, 04388, 04389, 04390, 04391, 04392, 04393, 04394, 04395, 04396, 04397, 04398, 04399, 04400, 04401, 04402, 04403, 04404, 04405, 04406, 04407, 04408, 04409, 04410, 04411, 04412, 04413, 04414, 04415, 04416, 04417, 04418, 04419, 04420, 04421, 04422, 04423, 04424, 04425, 04426, 04427, 04428, 04429, 04430, 04431, 04432, 04433, 04434, 04435, 04436, 04437, 04438, 04439, 04440, 04441, 04442, 04443, 04444, 04445, 04446, 04447, 04448, 04449, 04450, 04451, 04452, 04453, 04454, 04455, 04456, 04457, 04458, 04459, 04460, 04461, 04462, 04463, 04464, 04465, 04466, 04467, 04468, 04469, 04470, 04471, 04472, 04473, 04474, 04475, 04476, 04477, 04478, 04479, 04480, 04481, 04482, 04483, 04484, 04485, 04486, 04487, 04488, 04489, 04490, 04491, 04492, 04493, 04494, 04495, 04496, 04497, 04498, 04499, 04500.

Table listing Kentucky horse racing entries with columns for race number, time, track, and various horse and jockey identifiers.

CONTROLLED ENROLLMENT COURSES

Table listing enrollment courses for various tracks, including horse names, jockeys, and odds.

SPECIAL ENROLLMENT COURSES

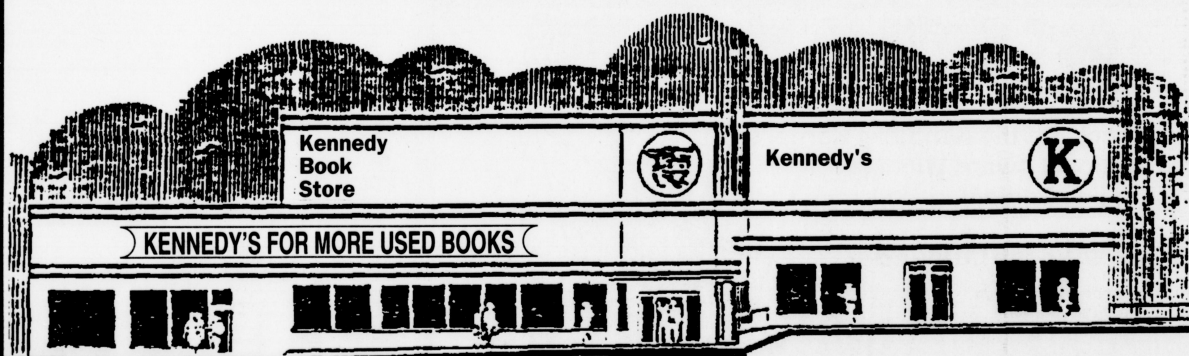
Table listing special enrollment courses with columns for race number, track, and horse/jockey information.

Ca. Some 8614. CONVE. some 8614. CONVE. some 8614. CONVE. some 8614. CONVE. some 8614. CONVE. some 8614.

Help Wanted. Night production worker for the Kentucky Kernel. Possible hours Sundays thru Thursdays from 6-12 pm. Macintosh working environment; you MUST be Mac literate. Experience with design and/or page layout with Quark Xpress, Freehand, Adobe Photoshop a big plus. Portfolio preferred but not required. Not a lot of money but great experience if you want to work in this field. Call Robin at 257-6525 M-F, 9-5 to make an appointment to interview.



# Save 25% on Used Textbooks



## KENNEDY BOOK STORE

Corner of S. Lime and Euclid

"We've Got The Corner On Savings"



OPEN 8:30am - 5:30pm MON - SAT  
EXTENDED HOURS

SUNDAY NOON - 5:00pm • MON - THURS 8am - 8pm