

Nov. 1903
CYNTHIANA
KY.

ODD WHEEL AV. 2

31

N. CHURCH

E. PEARL

32

CYNTHIANA

4

L. & N. R. R. (K. C. Div.)

13

34

N. WALNUT

Cemetery

W. PEARL

E. PEARL

N. POPLAR

N. MAIN

N. WALNUT

11

2

Scale of Feet

W. PENN

E. PENN

3

4

Map Dated
31 JUL 1903



4

3

2

N. MAIN

Nov. 1903
CYNTHIANA
KY.

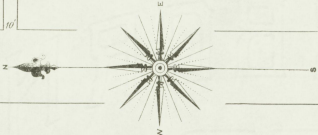
N. POPLAR

W. PLEASANT

5

W. PENN

W. MILL

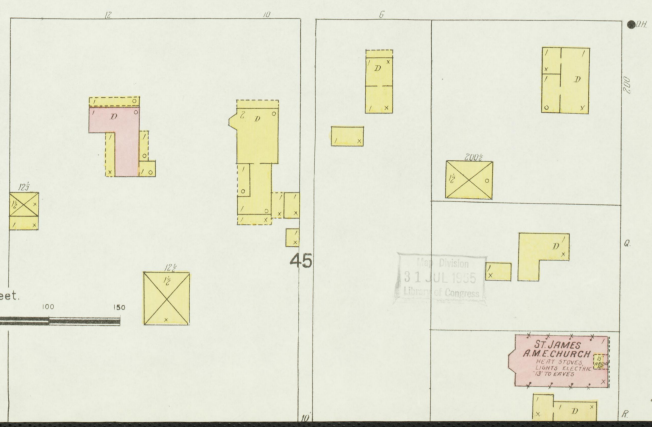
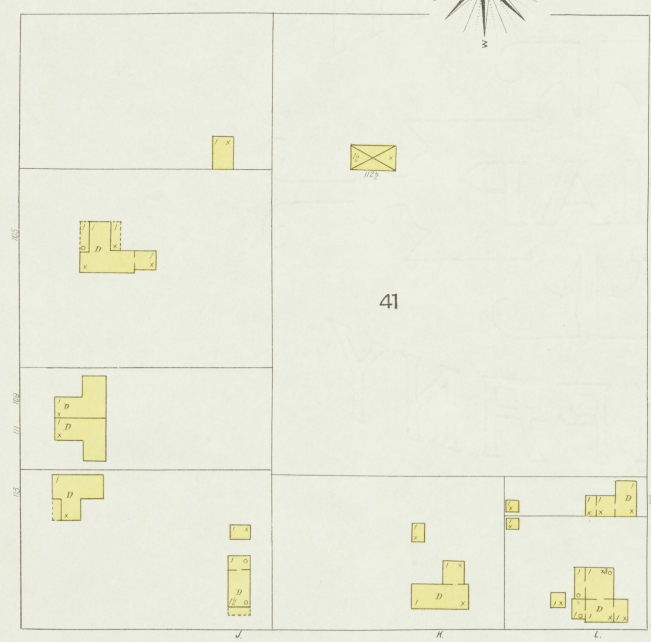
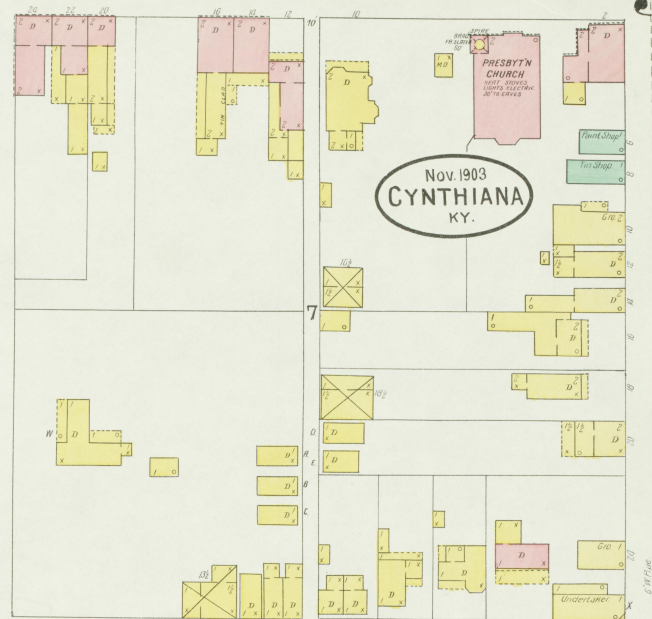


N. LOCUST

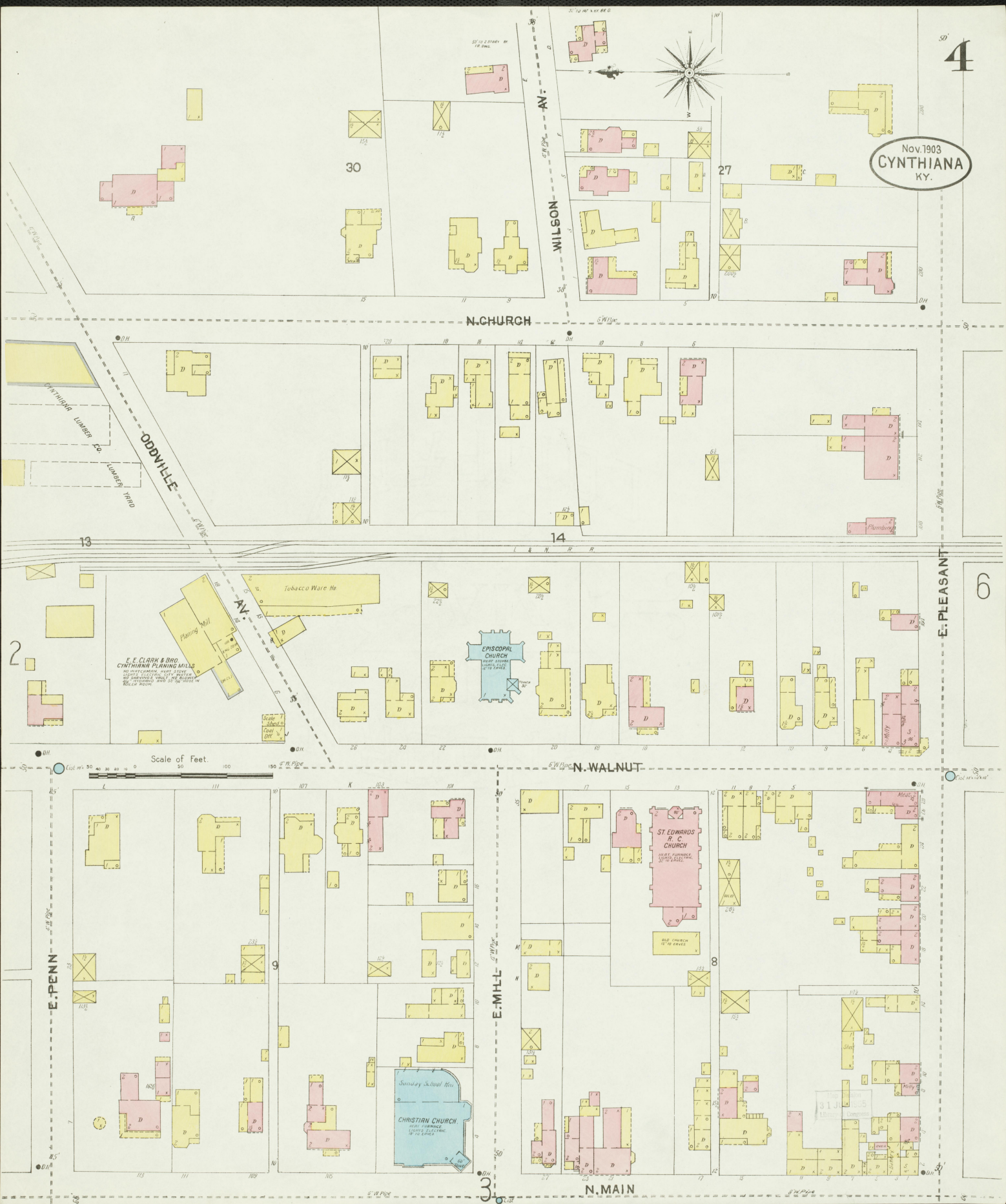
Scale of Feet.

This Plat is
31 JUL 1905
Approved by the
Board of Commissioners

ST JAMES
AME CHURCH
P.O. BOX 104
CYNTHIANA KY.



Nov. 1903
CYNTHIANA
KY.



6

5

Nov. 1903
CYNTHIANA
KY.

S. MAIN

COURT

S. POPLAR

W. PLEASANT

3

S. LOCUST

LINCOLN AV.

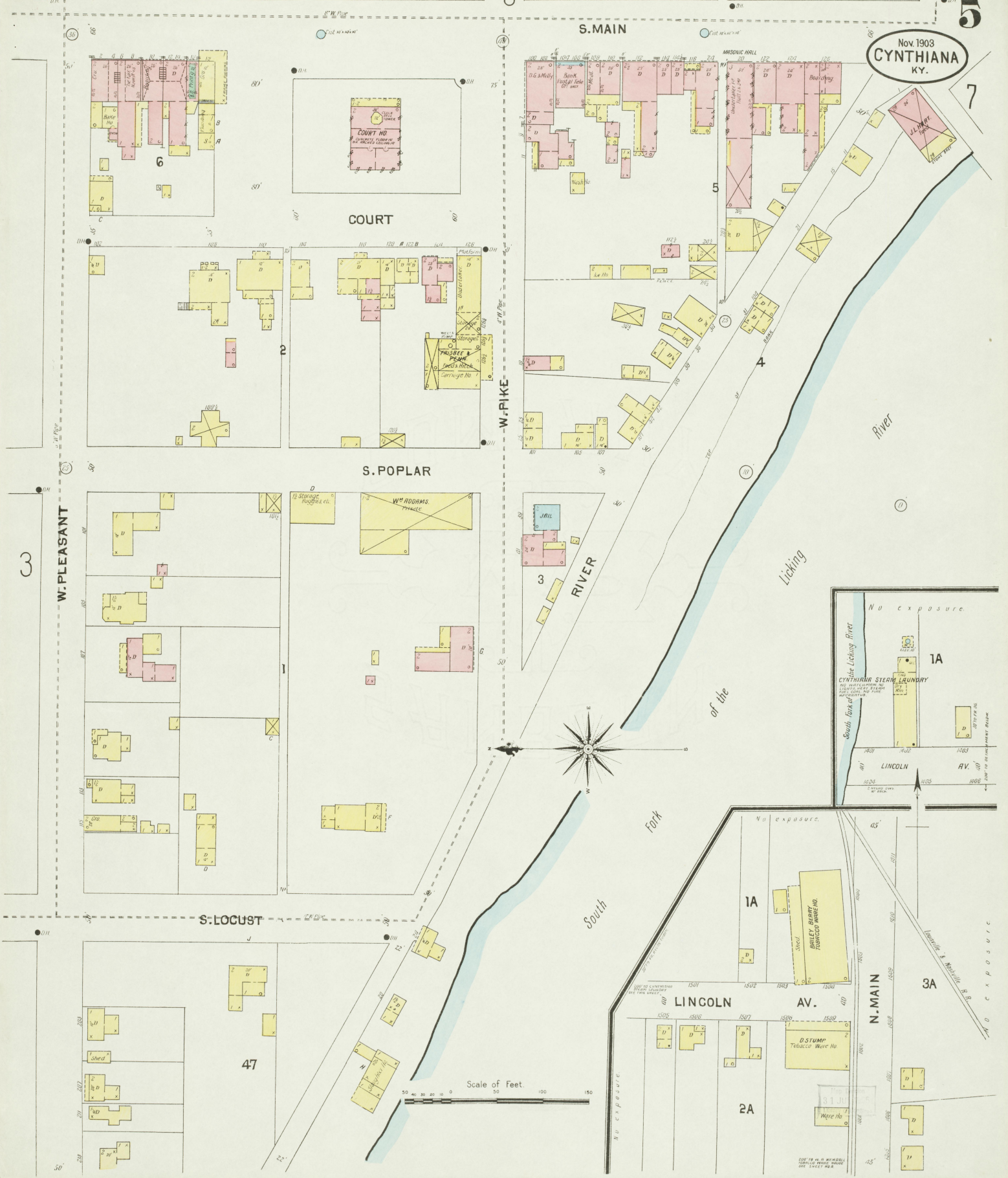
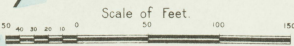
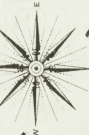
N. MAIN

47

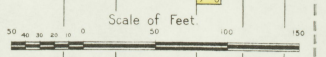
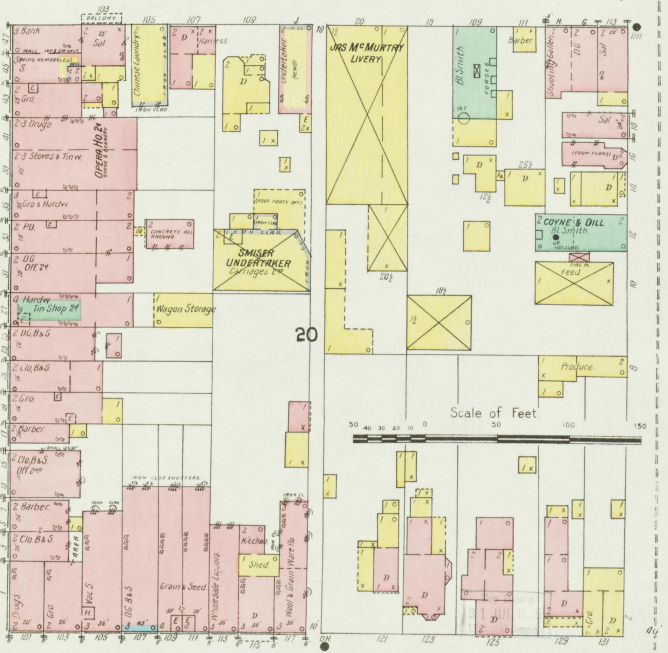
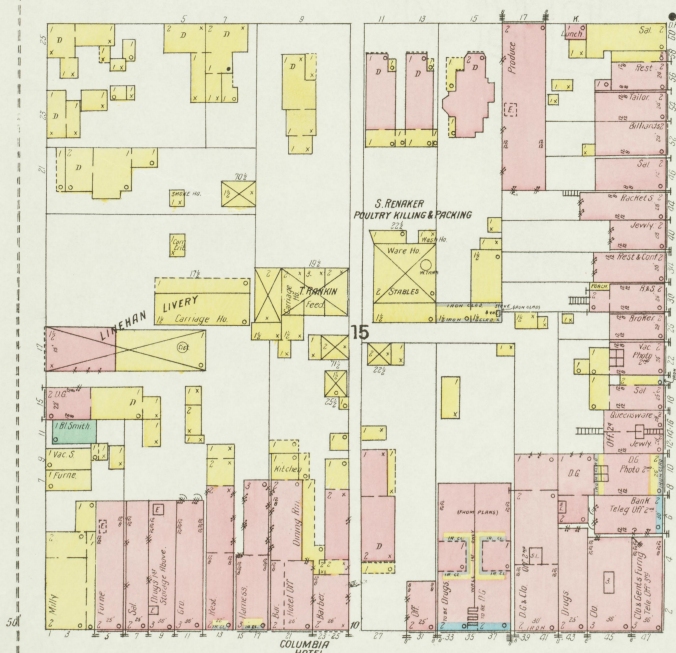
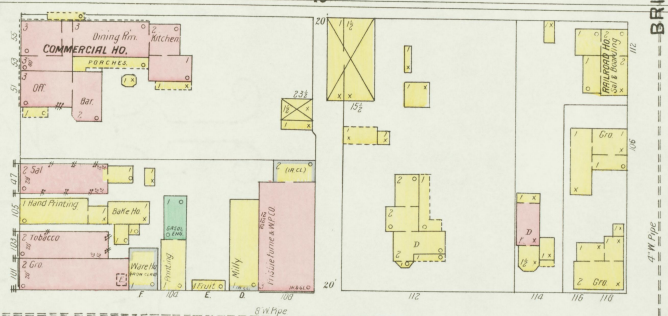
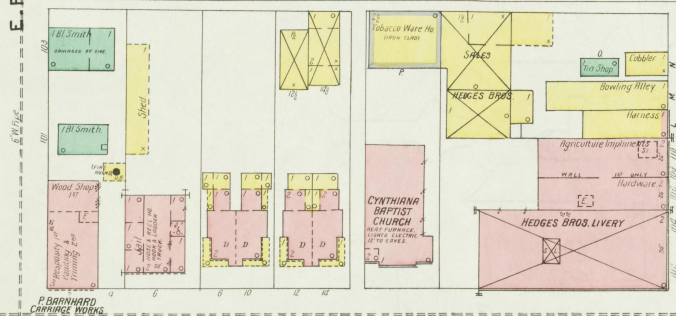
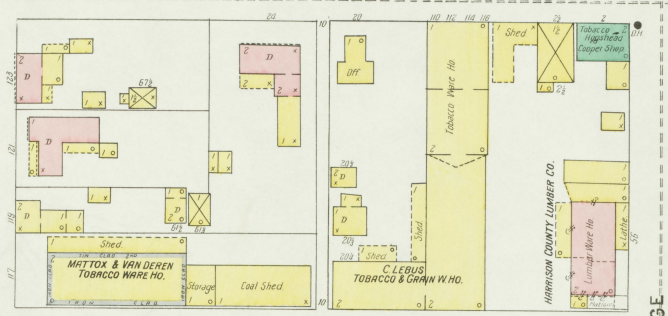
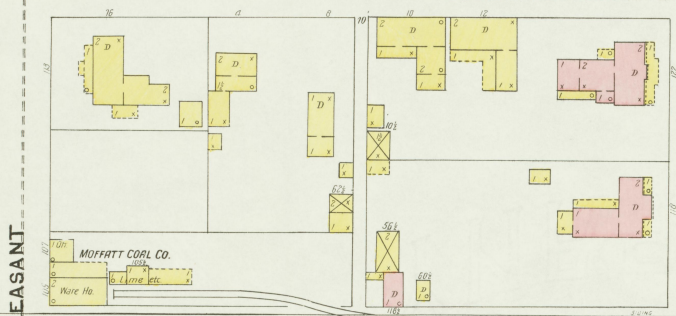
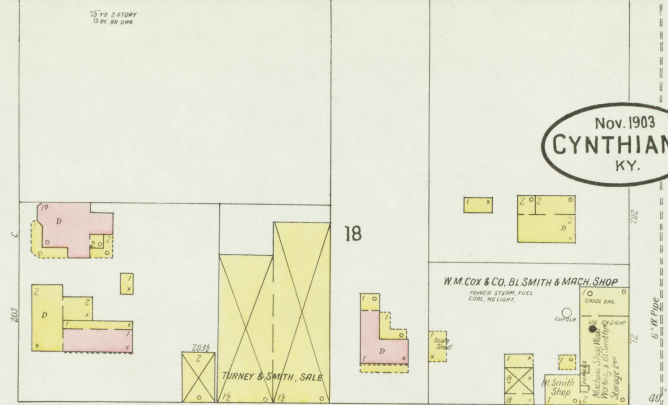
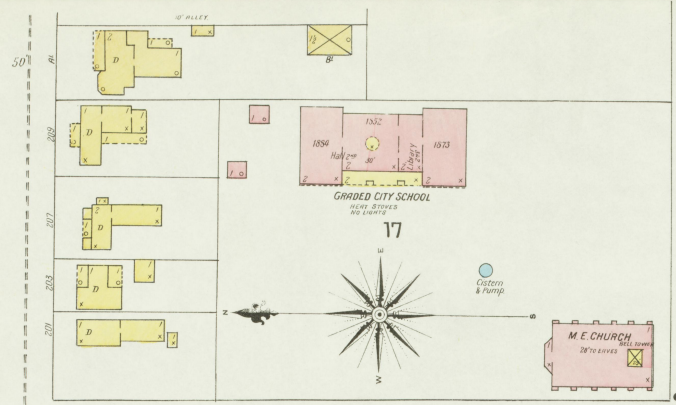
1A

2A

3A



1903 TR. W. D. WENDELL
CYNTHIANA PLAT MAP
SEE TITLE PAGE B



24

S. CHURCH

23

S. WALNUT

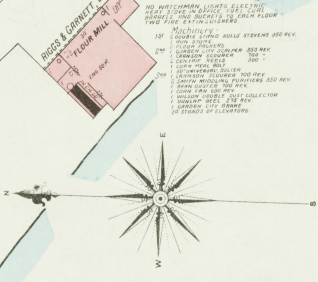
6

BRIDGE

5



REGISTERED DISTILLERY NO. 6.
 (Distillery Code shown)
 NIGHT OPERATIONS, CLOCK & STEWARDS
 MUST STAY IN LOCKS & LOCKS KEYS
 UNDER PENALTY OF FINE OR IMPRISONMENT
 ONE YEAR OR MORE



Scale of Feet.
 0 50 100 150

1/2 Mile North of Court Ho.
Cynthiana Ky.

W.A. KENDALL
TOBACCO WARE HO. NO. 3

F.S. ASHBROOK DISTILLING CO.
Formerly F.S. ASHBROOK (and) OLD VAN HOOK DISTY
REGISTERED DISTILLERY NO. 35, 5th DISTRICT
HARRISON CO. KY.

BONDED WARE HO. NO. D.
Copy 3000 Barrels
Dist. No. 35

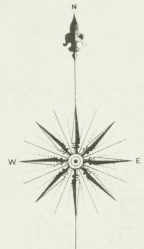
BONDED WARE HO. NO. C.
Copy 3000 Barrels
Dist. No. 35

BONDED WARE HO. NO. B.
Copy 1000 Barrels
Dist. No. 35

BONDED WARE HO. NO. A.
Copy 1000 Barrels
Dist. No. 35

DISTILLERY
Cooling Pipes
Machinery

ST. N. MAIN



1/2 Mile West of Cynthiana Ky.

Nov. 1903
CYNTHIANA
KY.

Formerly REDMON DISTILLING CO.
REGISTERED DISTILLERY NO. 15, 6th DISTRICT
HARRISON CO. KY.

DISTILLERY discontinued
Machinery
Cooling Pipes

Used for Tobacco Storage
(see also)

Copy 1000 Barrels
Dist. No. 15

Copy 1000 Barrels
Dist. No. 15

Copy 1000 Barrels
Dist. No. 15

Copy 1000 Barrels
Dist. No. 15

Copy 1000 Barrels
Dist. No. 15

1/2 Mile S.W. of Cynthiana Ky.

No exposure any side

Copy 1000 Barrels
Dist. No. 15

KENTUCKY DISTILLERIES & WARE HO. CO.
Known as THE H. KELLER CO.
Formerly known as ASHBROOK BROS. REGISTERED DISTILLERY NO. 5, 6th DISTRICT
HARRISON CO. KY.

Also run as ASHBROOK BROS.

Production: Higher grade than most Bourbon and Rye Whiskey
in the West. System complete. No other distilleries in the
area. One in distillery. No other distilleries in the area.
No other distilleries in the area. No other distilleries in the area.
No other distilleries in the area. No other distilleries in the area.
No other distilleries in the area. No other distilleries in the area.
No other distilleries in the area. No other distilleries in the area.

BONDED WARE HO. NO. B.
Copy 1000 Barrels
Dist. No. 5

BONDED WARE HO. NO. C.
Copy 1000 Barrels
Dist. No. 5

BONDED WARE HO. NO. D.
Copy 1000 Barrels
Dist. No. 5

Cattle Sheds
for rear of main entrance

No exposure any side

Scale of Feet
0 50 100 150

Licking River

South Fork of

KENTUCKY 6th DISTRICT

9

Nov. 1903
CYNTHIANA
KY.

1/2 Miles West of Fair Station and
4 1/2 Miles S.W. of Cynthiana.

At Fair Depot
(Kentucky Central Branch, L. & N. R.R.)

Vacant beyond

KENTUCKY DISTILLERIES & WARE HO. CO.
run as OLD LEWIS HUNTER DISTILLERY by G. R. SHARPE & CO.
REGISTERED DISTILLERY NO. 19, 6th DIST. HARRISON CO. KY.

Product: Bourbon Sour Mash Whiskey.
Mash Capacity: 500 bushels. Yield: 2000 gallons per wash.
Run only four to six months of year.
Mash water comes from creek. Fuel: coal. Heat
and steam from a boiler. Distillation in stills. Still
water returned to creek. No other water used.
No other distilleries in this area.

BONDED WARE HO. NO. 1
Capacity: 10000 Bushels
No. 19
G. R. SHARPE & CO.
DISTILLERS

Distillery
MILL & SLOP DRYING PLANT
Capacity: 10000 Bushels
No. 19
G. R. SHARPE & CO.
DISTILLERS

WARE HOUSES
Bonded Ware Ho. No. 19
Capacity: 10000 Bushels
No. 19
G. R. SHARPE & CO.
DISTILLERS

DISTILLERY, MILL & SLOP DRYING PLANT
Capacity: 10000 Bushels
No. 19
G. R. SHARPE & CO.
DISTILLERS

BONDED WARE HO. NO. 19 E
Capacity: 10000 Bushels
No. 19
G. R. SHARPE & CO.
DISTILLERS

BONDED WARE HO. NO. 19 D
Capacity: 10000 Bushels
No. 19
G. R. SHARPE & CO.
DISTILLERS

BONDED WARE HO. NO. 4
Capacity: 10000 Bushels
No. 4
T. J. MEGIBBEN CO.
DISTILLERS

THE T. J. MEGIBBEN CO'S EDGEWATER DISTILLERY
REGISTERED DISTILLERY NO. 1, 6th DIST. HARRISON CO. KY.
Formerly known as T. J. MEGIBBEN BROS. DISTILLERY

Product: Bourbon and Rye Whiskey.
Pure Mash, sour mash.
Capacity: 500 bushels per day. Produce: 2000 gallons per day.
Run daily six months per year.
Mash water from creek. Fuel: coal. Heat and steam from boiler.
Distillation in stills. Still water returned to creek.
No other distilleries in this area.

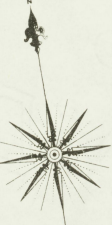
A
Capacity: 10000 Bushels
No. 1
T. J. MEGIBBEN CO.
DISTILLERS

C
Capacity: 10000 Bushels
No. 1
T. J. MEGIBBEN CO.
DISTILLERS

BONDED WARE HO. NO. 2
Capacity: 10000 Bushels
No. 2
T. J. MEGIBBEN CO.
DISTILLERS

BONDED WARE HO. NO. 3
Capacity: 10000 Bushels
No. 3
T. J. MEGIBBEN CO.
DISTILLERS

FREE WARE HO. NO. 1
Capacity: 10000 Bushels
No. 1
T. J. MEGIBBEN CO.
DISTILLERS



Scale of Feet.
0 50 100 150

Map Dated
31 JUL 1895
1895

