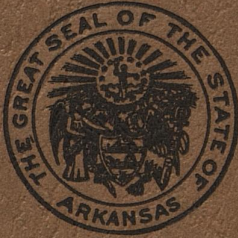
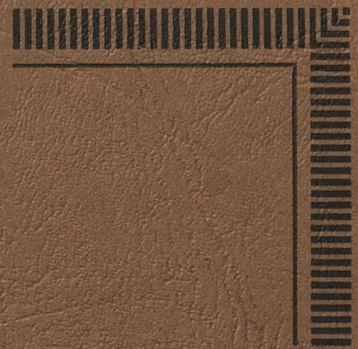


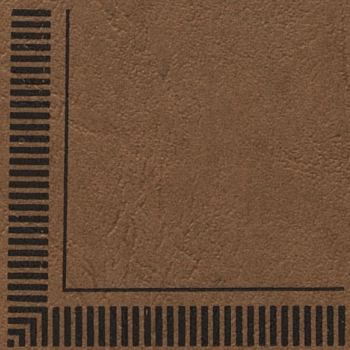
FW4.14:
Ar4Kc
Archives
Arkansas



INVENTORY
of the
CHURCH ARCHIVES
of
ARKANSAS

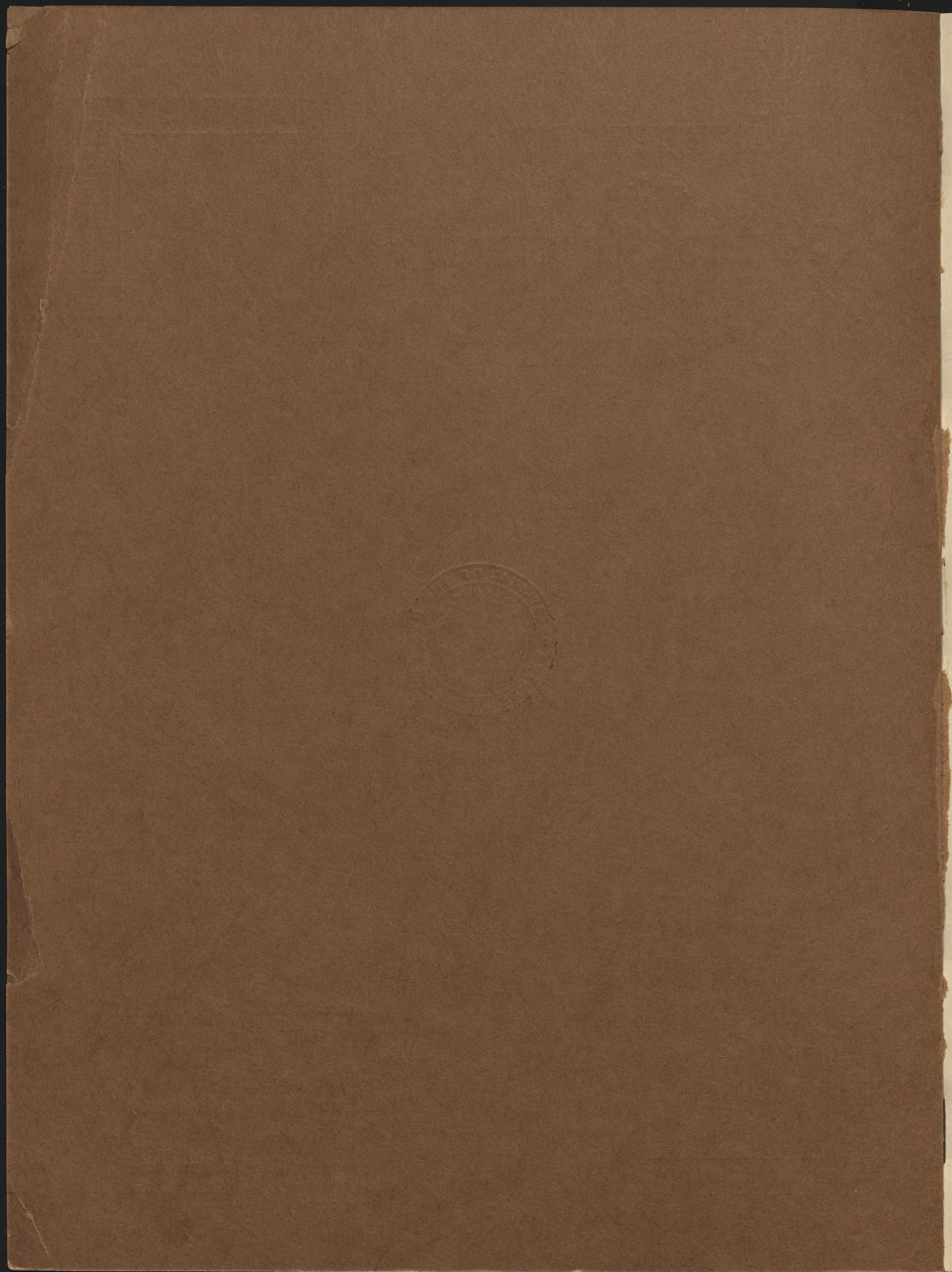


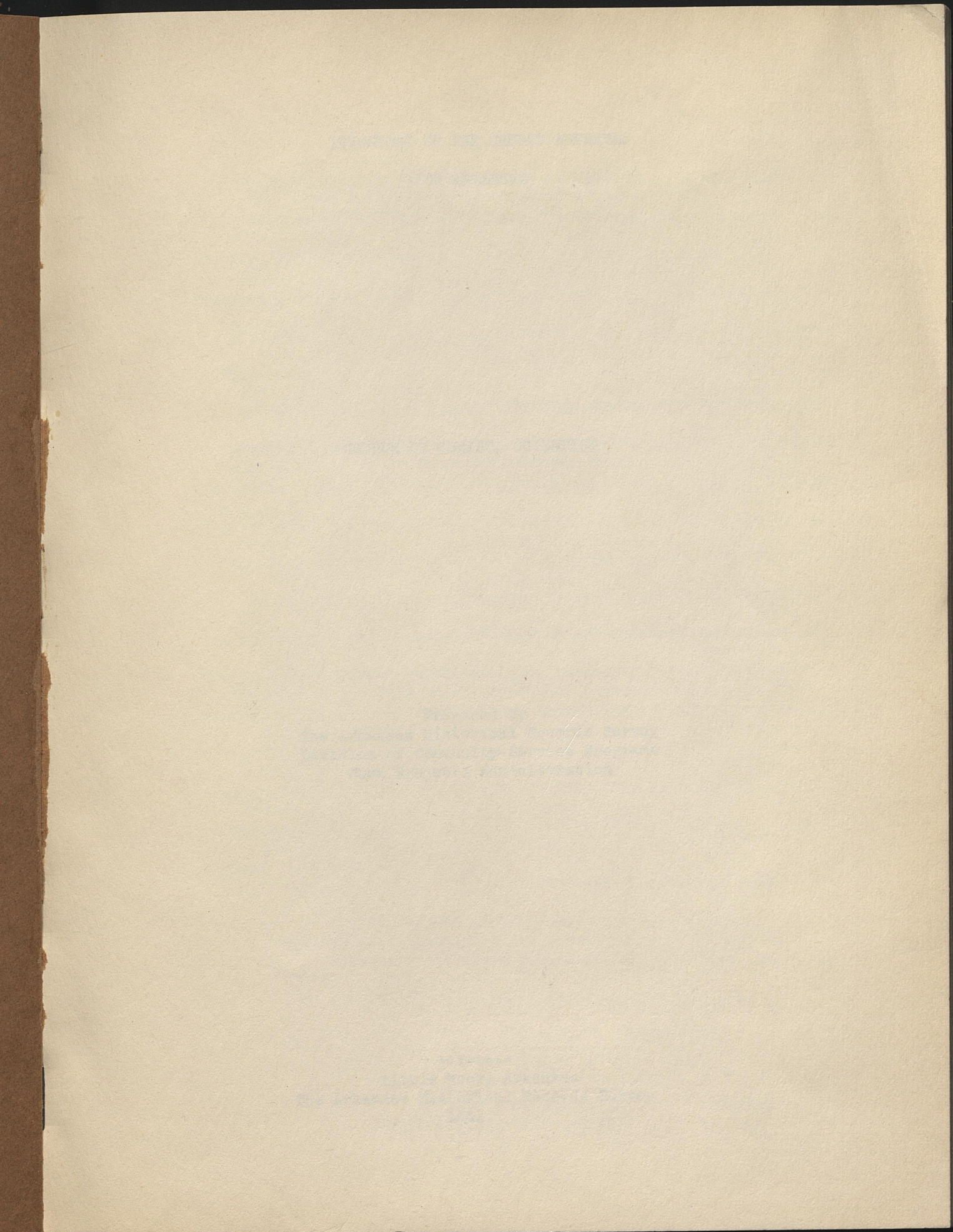
LIBRARY
UNIVERSITY of KENTUCKY

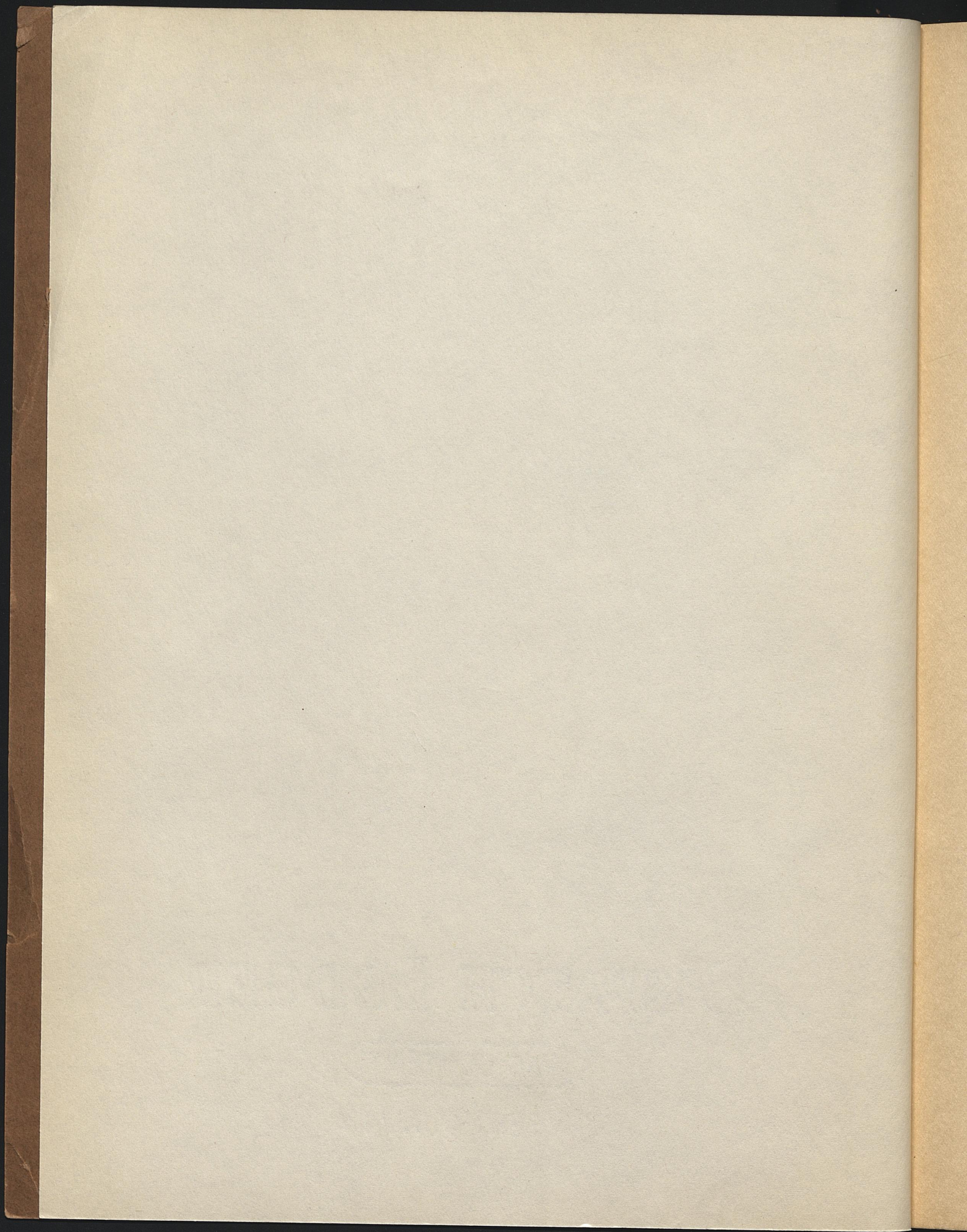


**First Church of Christ,
Scientist**

Prepared By
The Historical Records Survey
Division of
Community Service Programs
Work Projects Administration







INVENTORY OF THE CHURCH ARCHIVES

OF ARKANSAS

CHURCH OF CHRIST, SCIENTIST

Prepared by
The Arkansas Historical Records Survey
Division of Community Service Programs
Work Projects Administration

Little Rock, Arkansas
The Arkansas Historical Records Survey
1941

The Historical Records Survey

Sargent B. Child, Director
John C. L. Andreassen, Regional Supervisor
Raymond Foster, State Supervisor

Research and Records Programs

Harvey E. Becknell, Director
H. H. Jacoway, State Chief

Division of Community Service Programs

Florence Kerr, Assistant Commissioner
Leo G. Spofford, Chief Regional Supervisor
May Bevens, State Director

Work Projects Administration

Howard O. Hunter, Commissioner
Lawrence Westbrook, Regional Director
Floyd Sharp, State Administrator

Sponsor:

University of Arkansas
College of Arts and Sciences

FOREWORD

American historians have made great progress in the past few decades. But many problems still remain unsolved, many sources have not yet been examined. The Historical Records Survey of the Work Projects Administration has endeavored to call attention to these sources so that the historian of the future may paint a better picture of our national heritage.

Two years ago the Arkansas division of the Historical Records Survey commenced publication of a series dealing with the county records of the State. With the present volume a new project reaches publication stage. Under the capable supervision of Mr. Raymond Foster, the State Survey has made systematic inventories of the church archives of Arkansas. In presenting these, it makes accessible materials that have long been difficult to locate and to use. All will recognize the value of this work in opening up a field of interest to those connected with the churches of our State, in describing and classifying religious records which cast light on every aspect of the social and cultural development of Arkansas. The University of Arkansas, through its College of Arts and Sciences, is pleased indeed to be able to sponsor such a worthwhile project.

H. M. HOSFORD

Dean of the College of Arts and Sciences
The University of Arkansas

FOREWORD

American historians have made great progress in the past few decades. But many problems still remain unsolved, many sources have not yet been examined. The Historical Records Survey of the Work Projects Administration has endeavored to call attention to these sources so that the historian of the future may paint a better picture of our national heritage.

Two years ago the Arkansas Division of the Historical Records Survey commenced publication of a series dealing with the county records of the State. With the present volume a new project reaches publication stage. Under the capable supervision of Mr. Raymond Foster, the State Survey has made systematic inventories of the church records of Arkansas. In presenting these, it makes available materials that have long been difficult to locate and to use. All will recognize the value of this work in opening up a field of interest to those connected with the churches of our State. In describing and classifying religious records which cast light on every aspect of the social and cultural development of Arkansas. The University of Arkansas, through its College of Arts and Sciences, is pleased indeed to be able to sponsor such a worthwhile project.

H. H. ROBERTS

Dean of the College of Arts and Sciences

The University of Arkansas

PREFACE

The Historical Records Survey was organized in Arkansas in March 1936. At first it was a part of the Federal Writers Project, but in November of the same year it became an independent part of Federal Project No. 1. On September 1, 1939, the unit in Arkansas was transformed into a locally sponsored, State-wide project with Howard H. Jacoway as State Supervisor. Raymond Foster succeeded Mr. Jacoway as State Supervisor, September 5, 1940. The project is sponsored by the College of Arts and Sciences of the University of Arkansas. The county judges throughout the State are the co-sponsors. At present the Arkansas Historical Records Survey embraces the inventories of the State archives, the county archives, the municipal archives, the church archives, the early American imprints, the manuscripts, and the newspapers of the State. Six county inventories, Cleburne, Faulkner, Hot Spring, Searcy, Cross, and Cleveland have been published.

The task of the church archives survey is to prepare inventories of the church records and incidentally a directory of the churches in the State. The arrangement of both the inventories and the directory will be by denominations and their ecclesiastical subdivisions, based largely on the classification of the United States Census of Religious Bodies.

The inventory of the records of the Church of Christ, Scientists, is the first publication prepared by the church archives staff. Source material on every church in the State has been obtained by research in the church archives, in printed collections, and by personal interviews. Since the usefulness of the publication depends on accuracy, every effort has been made to attain this essential characteristic. Clifford P. Smith, editor of the Bureau of History and Records of Christian Science Mother Church kindly consented to write an essay on the Christian Science movement, and Mrs. Ethel B. Crawford, member of the Board of Directors of the First Church in Little Rock, contributed bibliographical data on the works of Mrs. Mary Baker Eddy. With these exceptions, the inventory is the work of the church archives staff, which is directed by Dr. J. Olsen Anders, Assistant State Supervisor.

In the preparation of the inventory, the church archives staff has received splendid cooperation from Mr. William H. Vaughn of the Christian Science Committee on Publication for Arkansas and the local church leaders throughout the State. The editorial work has been facilitated greatly by the technical advice of John C. L. Andreassen, the Regional Supervisor, and Donald A. Thompson, National Editor, in charge of church archives inventories in the Washington office of the Historical Records Survey. Administratively the work has enjoyed the hearty support of the State officials of the Work Projects Administration.

Publications of the Survey are distributed to State and local libraries, to a limited number of agencies outside the State, and to each county judge in Arkansas. Requests for information concerning any of the inventories should be addressed to the State Supervisor, War Memorial Building, Little Rock, Arkansas, or to Dr. H. M. Hosford, Dean of the

Preface

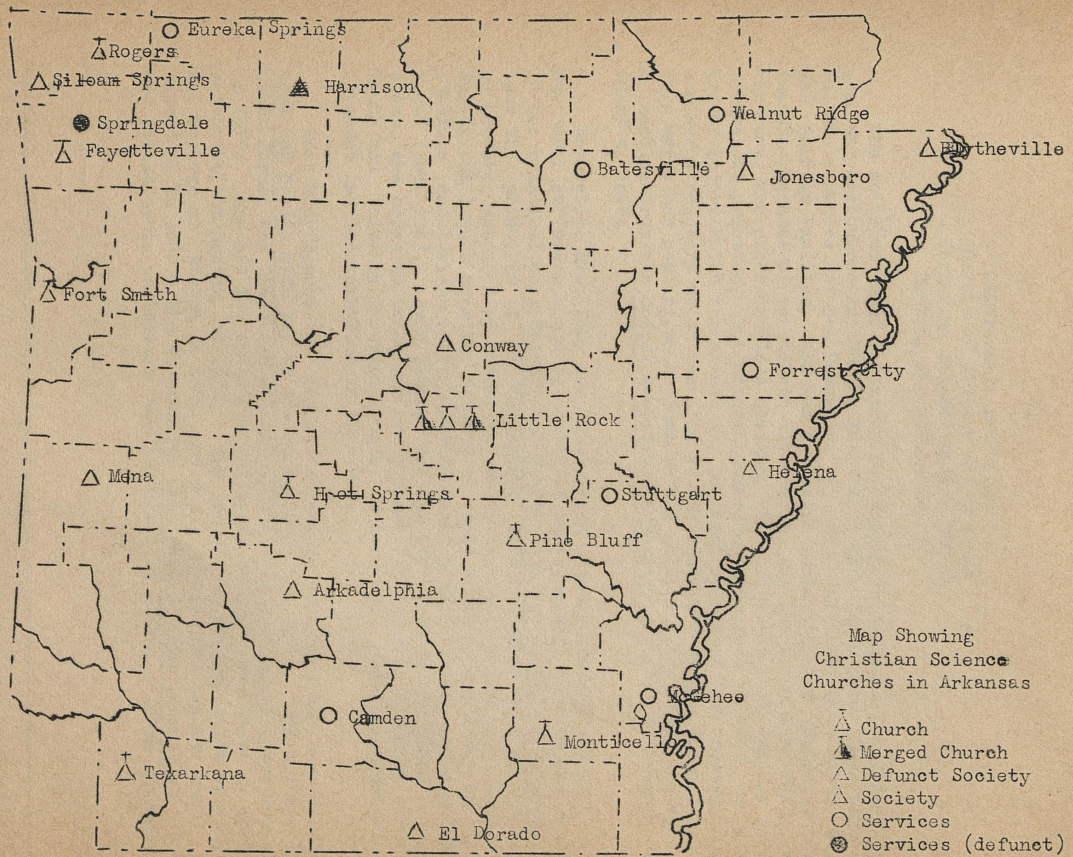
College of Arts and Sciences, University of Arkansas, Fayetteville, Arkansas. The Survey will, at all times, welcome criticisms or suggestions for improvement of its publications.

RAYMOND FOSTER
State Supervisor
The Arkansas
Historical Records Survey

War Memorial Building
Little Rock, Arkansas
October 1, 1941

TABLE OF CONTENTS

	PAGE
Foreword.....	iii
Preface.....	iv
Map showing Christian Science Churches in Arkansas.....	vii
The Christian Science Movement.....	1
The Church of Christ, Scientist, in Arkansas.....	3
Inventory of Christian Science Church Archives.....	5
Christian Science Practitioners in Arkansas.....	25
Bibliography.....	27
Chronological Index.....	29
Church Name Index.....	30
Place Name Index.....	31
General Index.....	32
Publications of the Arkansas Historical Records Survey Project.....	35



THE CHRISTIAN SCIENCE MOVEMENT

by

Clifford P. Smith, Editor
Bureau of History and Records
Christian Science Mother Church
Boston, Massachusetts (1)

The religion named Christian Science, which includes Christian healing, was discovered in 1866 by Mary Baker Eddy (then Mary Baker Glover). She was a native of New Hampshire connected with the well-known Baker and Ambrose Families, and was a devout member of the Congregational Church. Because of persistent ill health, she had tried homeopathy, water cure, and other drugless healing, in addition to the regular school of medical practice, but without obtaining permanent relief. An accidental injury which threatened to be fatal furnished the occasion for a wonderful recovery which resulted in the discovery of Christian Science. This marvelous healing, which immediately followed her reading an account of healing from the Gospel according to Matthew, occurred on Sunday, February 4, 1866.

Naturally, Mrs. Eddy sought to learn exactly how she was healed and how other sufferers could be healed in the same way. As she has written in her principal work, Science and Health with Key to the Scriptures; "I knew the principle of all harmonious mind-action to be God, and that cures were produced in primitive Christian healing by holy, uplifting faith; but I must know the Science of this healing, and I won my way to absolute conclusions through divine revelation, reason, and demonstration" (page 109). Even without waiting for complete and final conclusions, she began to teach her newly found Science and to demonstrate its truth and value by important cases of healing. The Christian Science movement had its inception in this way.

Mrs. Eddy issued the Christian Science textbook, now entitled Science and Health with Key to the Scriptures, in 1875. She and her students formed the Christian Scientist Association at Lynn, Massachusetts, in 1876. She and her immediate followers founded the Church of Christ, Scientist, at Boston, in 1879. She opened the Massachusetts Metaphysical College at Boston in 1881, and was its principal teacher until she closed it in 1889. She founded The Christian Science Journal in 1883, and edited this periodical for a number of years. Other Churches of

(1) This sketch was written for the Church Archives Section of the Arkansas Historical Records Survey. The early history of the Christian Sci-

ence movement will be treated more fully in the forthcoming Inventory of the Church Archives of Massachusetts, Church of Christ, Scientist.

Christ, Scientist, or Christian Science Societies, affiliated with The Mother Church, began to be formed in the middle of the 1880's. The first few of them were organized at Oconto, Wisconsin; Chicago, Illinois; Lawrence, Massachusetts; and Oakland, California.

In 1941, there are 2,858 organized and recognized Churches of Christ, Scientist, or Christian Science Societies, of which 2,175 are in the United States and 683 are in other countries. There are also many Christian Scientists who live at places which have no Christian Science church or society. In short, the Christian Science movement has progressed consistently from its inception to the present time.

The Christian Science movement in Arkansas has progressed steadily but not rapidly. Its inception was due to healings at Eureka Springs and Fort Smith in the latter part of the 1880's. In 1941, there are seventeen organized and recognized churches or societies in Arkansas, of which twelve own their own meeting places. As elsewhere, Christian Science has a goodly number of adherents in Arkansas who are not yet affiliated with any branch church or society. The branches of The Mother Church in Arkansas are located at the following places: Arkadelphia, Blytheville, Conway, El Dorado, Fayetteville, Fort Smith, Helena, Hot Springs, Jonesboro, Little Rock, Mona, Monticello, Pine Bluff, Rogers, Siloam Springs, Texarkana, and Walnut Ridge.

The New Testament presents Christian healing as an essentially Christian service. The Founder of Christianity commanded his followers to "heal the sick." He gave this commandment to the original twelve, to the next seventy, and finally to all of his followers (Luke 9: 2-6; Luke 10: 1, 8-9; Matthew 28: 19-20. See also Mark 16: 15-18; John 14: 11-12). History records that Christians continued to heal the sick for at least three centuries after the Master's ascension. A recent book collects citations to this effect with quotations from them (Christ Jesus, The Authentic Story of the Founder of Christianity, by John A. Dakes, 1940, pages 291-297).

The Church of Christ, Scientist, is designed to "commemorate the word and works of our Master" and to "reinstate primitive Christianity and its lost element of healing" (Church Manual, page 17). Christian Scientists have furnished and are furnishing impressive proofs that healing by purely mental and spiritual means is a present possibility.

Mrs. Eddy has issued more than a few books for the purpose of making Christian Science correctly known to the public. Her principal work, Science and Health with Key to the Scriptures, can be found in most public libraries and in all Christian Science reading rooms. The Christian Science Publishing Society issues a number of other books and periodicals. The books include authentic biographies of Mrs. Eddy. The periodicals include The Christian Science Monitor, and international daily newspaper; The Christian Science Sentinel, weekly; The Christian Science Journal, monthly; The Herald of Christian Science, with German, French, Dutch, Scandinavian, and Braille editions, monthly and quarterly; and the Christian Science Quarterly, containing the Lesson-Sermons for Sunday services. All who desire authentic information about Christian Science or its Founder are invited to consult these authentic sources.

THE CHURCH OF CHRIST, SCIENTIST, IN ARKANSAS

A number of factors contributed to the rapid spread of the Church of Christ, Scientist, throughout the land. Many people felt that the existing facilities for treating physical and mental ailments were inadequate. The Christian Science principle, by making the applied charity of the other churches unnecessary, allowed the new church to concentrate and apply its resources within a narrower range. Mrs. Mary Baker Eddy possessed the farsightedness, the financial acumen, and the administrative capacity to make the utilization of the funds available most effective. Mrs. Eddy and her lieutenants were ever on the alert to take advantage of opportunities in new places. The mobility of the population also facilitated the spread of the new church. But the most effective factor was the Christian Science practitioner. The practitioner had a new opportunity both to satisfy his altruistic impulses and incidentally to make a living. It is therefore not surprising that the practitioner played a leading role in making the new principle known unto all men.

Christian Science study groups, usually led by practitioners, were soon making the leading cities in Arkansas the nuclei of a powerful movement. Mrs. Lizzie Prettyman came to Fort Smith in 1886. (1) The pioneer work of Miss Lou Aldrich in Eureka Springs gave impetus to the movement both there and in Fort Smith. (2) Mrs. Martha Araminta Hoover was active in Little Rock in 1893, and Mrs. Anna Robinson, an outstanding student of Christian Science during the next forty years, came to the city in 1896. (3) Churches were established in these three cities before the end of the century. (4) Besides, a Christian Science practitioner had located in Fayetteville in 1895, (5) and services had been conducted in Springdale for several years. (6)

The new century brought fresh successes. Christian Science practitioners located in Mena about 1901 (7) and in Argenta (North Little Rock) about 1903, (8) and services were begun in Texarkana in 1901, (9) Siloam Springs in 1902, (10) Mena, Pine Bluff, and Hot Springs in

-
- (1) See entry 3.
(2) See entry 2. Helen Cooke Johnson, in Her Early History of First Church of Christ, Scientist, Fort Smith, Arkansas, (ms), relates that a colored barber practiced what he claimed was Christian Science healing in Eureka Springs at an early date and was credited with marked success. Even though Christian Scientists later found his Science spurious, his work aroused much interest at the time.
(3) See entry 4.
(4) See entries 2-4.
(5) Christian Science Journal, Publisher's Department, XIII (1895-96), p. xvi.
(6) See entry 1.
(7) See entry 5.
(8) Mrs. Mary A. Farris, Christian Science Journal, Publisher's Department, XXI (1903-4), p. xxxiii.
(9) See entry 15.
(10) See entry 11.

1905, (11) and Jonesboro in 1907. (12) But no more branches recognized by The Mother Church were organized until 1906. Then followed the establishment of a number of churches in rapid succession: Mena and Monticello, 1906; Fayetteville and Little Rock (Second Church), 1907; Pine Bluff and Walnut Ridge, 1909; Helena and Hot Springs, 1910; Rogers, 1911; Jonesboro and Siloam Springs, 1912; Harrison, approx. 1917; Texarkana, 1918; El Dorado, 1926; Little Rock (Second Church), 1928. (13) Besides, services were commenced in Batesville in 1912, (14) in Camden in 1923, (15) and in Stuttgart in 1927. (16) On the other hand the promising meetings begun in the home of Mr. and Mrs. C. W. Anthony in Lonoke in 1920 and continued for two years did not materialize in a formal organization. (17) Nor did the services which were held in Mr. Chas. E. Sullinger's office in Osceola about 1920-24 result in a permanent organization. (18) Meetings were also held in Marion, Turrell, and Earl, in Crittenden County, in 1928 and 1929; but the people most interested moved away. (19) Christian Science practitioners established themselves in the following places in which church organization was not achieved: Mrs. Jennie P. McIntyre in Berryville about 1915, (20) Mrs. Charlotte Roberts in Bentonville about 1925, (21) Mrs. Bernice Bonds in Warren about 1931, (22) and Mrs. Minnie Purdy in Gravette about 1932. (23) The continued vitality of the movement is attested by the organization of churches in Blytheville in 1933 and in Conway and Arkadelphia in 1936 and the arrangement for regular services in McGehee in 1931 and in Forrest City in 1938. (24) Meetings were also reported at Hope, Hempstead County, in 1940. (25)

A concise enumeration may serve best to illustrate the growth of the Christian Science movement in Arkansas. The Christian Science Journal carried the first announcement of services in the State in 1895-96. There were 3 churches in the State in 1900; 11 in 1910; 15 in 1920; and 16 in 1940. Not counting the informal groups which maintain regular services, the Christian Science movement has grown, during a period of forty years, from one church to sixteen at present.

- | | |
|--|--|
| (11) See entries 5, 8, and 13. | old residents, April 1940, by Louise K. Davis. |
| (12) See entry 17. | |
| (13) See entries 5-19. | (20) <u>Christian Science Journal</u> , Publisher's Department, XXXIII (1915-16), p. xliv. |
| (14) See entry 23. | (21) <u>Ibid.</u> , XLIII (1925-26), p. xl. |
| (15) See entry 24. | (22) <u>Ibid.</u> , XLIX (1931-32), p. xlvii. |
| (16) See entry 25. | (23) <u>Ibid.</u> , L (1932-33), p. xlvii. |
| (17) Information obtained from Mrs. F. A. Otis, an active member of the group, April 1940, by Blanche Edwards. | (24) See entries 20-22 and 26-27. |
| (18) Letter, April 18, 1941, from Mrs. Lillian S. Neblett. | (25) Information obtained from Mrs. Ruffin Boyett, May 1940, by Lucille M. Carrigan. |
| (19) Information obtained from | |

INVENTORY OF CHRISTIAN SCIENCE CHURCH ARCHIVES

A. THE FIRST CHURCH OF CHRIST, SCIENTIST, 1892--, Boston, Massachusetts.

Mrs. Mary Baker Eddy organized The Church of Christ, Scientist, in Boston, in 1892. (1) All churches of Christ, Scientist, and Christian Sciences Societies in Arkansas are branches of The Mother Church.

1. SPRINGDALE, approx. 1896-approx. 1899, Springdale, Washington County.

Mrs. H. W. Hewitt, a Christian Science practitioner, located at Springdale about 1895. (2) Christian Science services were probably begun within the next year at Mrs. C. V. Wilson's residence. (3) The services were continued for at least three years, and Mrs. C. V. Wilson was listed as First Reader in 1898-99. (4) The Christian Science Journal did not carry any announcement of services the following year.

No records have been located.

2. FIRST CHURCH OF CHRIST, SCIENTIST, 1896-approx. 1934, (existed as a Society approx. 1934-approx. 1936 and since as an informal organization), 68 Mountain Street, Eureka Springs, Carroll County.

Miss Lou Aldrich did effective pioneer work in Eureka Springs before 1890. (5) The first Church of Christ, Scientist, was organized in 1896. Miss Lou Aldrich and Mrs. Laura E. Evans, the practitioners in the city, were the first readers. (6) The services were held in various buildings for nearly two decades. The most picturesque of these was no doubt the "Log Cabin School House". (7) A one-story church, modern design, stucco finish, was erected at 68 Mountain Street in 1914. (8) The organization was changed to a Society about 1934 and to an informal organization about 1936. (9) Miss Kate Evans has been the First Reader since the

-
- (1) Mary Baker Eddy, Manual of The Mother Church, The First Church of Christ, Scientist, in Boston, Massachusetts, (89 edition), p. 18.
(2) Christian Science Journal, Publisher's Department, XIII (1895-96), p. xvi.
(3) Ibid., XIV (1896-97), p. xv.
(4) Ibid., XVI (1898-99), p. xiv.
(5) Johnson, Early History of First Church, Fort Smith (ms).
(6) Information obtained from

- Miss Kate Evans by La Rena Tweedy, March 1941.
(7) The places of worship are listed in the Christian Science Journal, Publisher's Department.
(8) Information obtained from Miss Kate Evans by La Rena Tweedy, March 1941.
(9) Christian Science Journal, Publisher's Department, LI (1933-34), p. xii. The Journal carried no announcement after, 1935-36.

death of her mother, Mrs. Laura E. Evans. (1) No records have been located.

3. FIRST CHURCH OF CHRIST, SCIENTIST, 1899-- (existed previously as a Society), Jewish Temple, N. 11th Street, Fort Smith, Sebastian County.

The first record of Christian Science activity in Fort Smith is that Mrs. Lizzie Prettyman (2) conducted family worship in her sitting room after her arrival in the city in 1886. (3) No organization was effected till Mrs. Clara Davis, a Christian Science practitioner, located in Fort Smith in 1897. (4) The Luce family, disciples of Miss Lou Aldrich in Eureka Springs, was also very active in promoting organization. (5) Services were held in the different homes, and a Society was apparently organized at Mrs. Davis' residence. A reading room was also opened and has been operated without interruption. (6) The Society was reorganized, at Mrs. Davis' home it is said, as the First Church of Christ, Scientist, in 1899. (7) Miss Charlotte E. Luce was the First Reader. (8) The church was incorporated, May 23, 1900. The services were held in various public halls during the next four years. The First Christian Church was bought January 26, 1903, but was leased to its former owners (9) and was not dedicated as the First Church of Christ, Scientist, till June 19, 1904. The church sold its building, November 1, 1939, and moved to the Jewish Temple; but it had bought lots at a different location twelve years earlier and expects to erect a new building.

CLERKS MINUTE RECORDS, 1899-- , 6 vols., minutes of all church meetings, call and stated, monthly, quarterly, and annual, showing reports of all officers for period stated. 1899-1936, 5 vols., in reading room in Kennedy Building; 1937-- , 1 vol., in custody of the clerk, Miss Elbertine Payne, 1103 S. Dodson Avenue, Fort Smith.

[MINUTES OF THE BOARD OF DIRECTORS], 1902-- , 4 vols., minutes of the meetings and proceedings of the board of directors for all stated and call meetings, monthly, quarterly, and annual. 1902-24, 3 vols., in reading room in Kennedy Building; 1924-- , 1 vol., in custody of the sec-

-
- | | |
|---|--|
| (1) Information obtained from Miss Kate Evans By La Rena Tweedy, March 1941. | (1897-98), p. xi. |
| (2) See p. 3 above. | (7) "First Church of Christ, Scientist, Fort Smith, Arkansas," Christian Science Journal, XXXII (1914-15), 39; Johnson, Early History of First Church, Fort Smith, (ms). |
| (3) Johnson, Early History of First Church, Fort Smith, (ms). | (8) Christian Science Journal, Publisher's Department, XVI (1898-99), p. v. |
| (4) Christian Science Journal, Publisher's Department, XV (1897-98), p. xiii. | (9) "First Church, Fort Smith," Christian Science Journal, XXXII (1914-15), 39. |
| (5) See p. 3 above. | |
| (6) Christian Science Journal, Publisher's Department, XV | |

retary, Mrs. Helen Cooke Johnson, 1105 N. 35th Street, Fort Smith,

CLERKS MEMBERSHIP RECORD, 1902--, 1 vol., list of members, showing dates and other information regarding admissions, withdrawals, and removals. In reading room in Kennedy Building.

CLERK'S PLEDGE RECORD, 1911-15, 1 vol., showing list of members and amount pledged. In reading room in Kennedy Building.

TREASURERS JOURNAL RECORD, 1915--, 3 vols., journal entries pertaining to the transaction of the business of the treasurer's office. 1915-28, 2 vols., in reading room in Kennedy Building; 1928--, 1 vol., in custody of the treasurer, Mr. W. G. Inglis, 822 S. 19th Street, Fort Smith.

TREASURERS LEDGER RECORD, 1900--, 7 vols., individual itemized accounts as shown by treasurer's journal, showing dates of entries, debits, and credits. 1900-1928, 6 vols., in reading room in Kennedy Building; 1928--, 1 vol., in custody of the treasurer, Mr. W. G. Inglis, 822 S. 19th Street, Fort Smith.

[SUNDAY SCHOOL RECORD], 1912-31, 1939--, 6 vols., record of Sunday school classes, showing names of teachers, names and number of pupils in each class, and the amount contributed by each. 1912-31, 5 vols., in reading room in Kennedy Building; 1939--, 1 vol., in custody of the superintendent, Mrs. Ethel Hunt, 119 Lecta Street, Fort Smith.

[LIBRARIAN'S STOCK RECORD], 1910--, 4 vols., showing the inventory of the stock (literature and other supplies) purchased, the stock sold, and the balance on hand at the reading room at each inventory. In custody of the assistant librarian, Mrs. Jennie Wallet, at the reading room in the Kennedy Building.

[LIBRARIAN'S DAILY SALES RECORD], 1910--, 7 vols., showing the daily record of the literature and other supplies sold at the reading room, the date of the sale, and the selling price. In custody of the assistant librarian, Mrs. Jennie Wallet, at the reading room in the Kennedy Building.

[LIBRARIAN'S CUSTOMER LEDGER], 1929--, 2 vols., the itemized account of each customer at the reading room, showing debits, credits, and the balance due and a self-contained alphabetical index, showing the name of the customer and the page reference to the record. In custody of the assistant librarian, Mrs. Jennie Wallet, at the reading room in the Kennedy Building.

[LIBRARIAN'S RECORD OF REPORTS], 1910--, 10 vols., the monthly, quarterly, and annual reports of the reading room librarian, showing receipts and disbursements. In custody of the assistant librarian, Mrs. Jennie Wallet, at the reading room in the Kennedy Building.

4. FIRST CHURCH OF CHRIST, SCIENTIST, 1899--, 20th and Louisiana Streets, Little Rock, Pulaski County.

Christian Scientists in Little Rock held meetings in their homes as early as 1893. Mrs. Martha Araminta Hoover, 1011 Welch Street, seems to have been the moving spirit. (1) The permanent activity, however, commenced in 1896 when Mrs. Anna Robinson, a Christian Science practitioner, came to Little Rock. Services began in Mrs. Robinson's home in October 1896 and were continued in various homes and in public halls. First Church of Christ, Scientist, in Little Rock was organized, September 20, 1899, 22 members being present. Mrs. Robinson was the First Reader. A reading room to meet the demand for Christian Science literature was opened in 1901. (2) A few years later a group of members commenced to hold separate services and organized as the Second Church of Christ, Scientist, in July 1907. (3) January 30, 1911, the two churches reunited. (4) From this date the services were held in the chapel which had been erected by the Second Church on the corner of 20th and Louisiana Streets. (5) In 1919 the chapel was sold and contracts let for a new building on the same site. The new church, of California Mission architecture, has been described as "one of the most impressive churches in the city". The first service was held in this building, March 21, 1920. (6) In May 1928, another group of members separated and established a Second Church of Christ, Scientist, in Little Rock; (7) but the churches were reunited in 1936. (8) The new church building was dedicated, March 6, 1938, eighteen years after it had been opened for the first service. (9)

MINUTE BOOK, 1911--, 2 vols. Title varies: Minute Book of Church of Christ, Scientist, Little Rock, 1911-34, 1 vol. The church minutes, showing the proceedings of the meetings, both regular and call, of the church for the election of officials and other business transacted, 1911, and the minutes of the board of trustees, 1911-15. In custody of the clerk, Miss Bertha Johnson; 1911-34, 1 vol., in reading room in

-
- (1) Information obtained from Mrs. Nora Mangel, daughter of Mrs. Anna Robinson, June 18, 1940, by J. Olson Anders.
- (2) [Mrs. Anna Robinson], "First Church of Christ, Scientist, Little Rock, Arkansas," Christian Science Journal, XXXI (1913-14), 535; Christian Science Journal, Publisher's Department, XV (1897-98), p. xiii; XVII (1899-1900), p. ix.
- (3) Mrs. Anna Robinson (manuscript in possession of Mrs. Nora Mangel). See entry 6.
- (4) Minute Book, 1911, p. 1: [Robinson], "First Church, Little Rock," Christian Science Journal, XXXI (1913-14), 535.
- (5) Christian Science Journal, Publisher's Department, XXVIII (1910-11), p. vii.
- (6) Christian Science Sentinel, XLI (1938), 191-192.
- (7) See entry 19.
- (8) Christian Science Journal, Publisher's Department, XLIX (1931-32), p. xiii; LIV (1936-37), 9.
- (9) Gladys Powell, "First Church of Christ, Scientist, to Hold Dedicatory Services Today; First meeting in City, October 1896," Arkansas Democrat (Little Rock), Mar. 6, 1938.

the Hollenberg Building; 1934--, 1 vol., 315 Cypress Street, North Little Rock.

BOARD MEETING, 1915--, 3 vols. Title varies: Minute Book of the Board of Directors of First Church of Christ, Scientist, Little Rock, 1915-26, 1 vol.; Minute Book of the Christian Science Board of Directors, 1927-38, 1 vol. The minutes of the church board, showing the proceedings at the meetings. In custody of the clerk, Miss Bertha Johnson; 1915-26, 1 vol., in the reading room in the Hollenberg Building; 1927--, 2 vols., 315 Cypress Street, North Little Rock.

COMPLETE ROSTER, 1911--, 1 vol., showing the bylaws and rules and the membership roll. (Current membership list is kept by clerk on loose leaves ready for entry in permanent record). In custody of the clerk, Miss Bertha Johnson, 315 Cypress Street, North Little Rock.

SINGLE ENTRY LEDGER (The Financial Record), 1916-19, 1923--, 5 vols. Title varies: Ledger, 1916-19, 1923-31, 3 vols.; Journal, 1931-34, 1 vol. The financial reports, showing receipts and expenditures, monthly entries. 1916-19, 1 vol., in custody of the treasurer, Mrs. Cara Bradbury, at the church; 1923-34, 3 vols., in custody of ex-treasurer, Mrs. Elizabeth Dome, 2301 Summit Street, Little Rock; 1933--, 1 vol., in custody of the treasurer, Mrs. Cara Bradbury, 1117 W. 23rd Street, Little Rock.

MINUTE BOOK (Sunday School Record), 1937--, 1 vol., showing list of officers and teachers, record of attendance, and collections and distribution of funds. In custody of Mrs. Goldia Busby, 2122 Chester Street, Little Rock.

RECORD (Librarian's Stock Record), 1925-27, 1933--, 2 vols. Title varies: No title, 1925-27, 1 vol. The inventory of the stock (literature and other supplies) purchased, the stock sold, and the balance on hand at each inventory. In custody of the librarian, Mrs. Margaret Chamberlain, at the reading room in the Hollenberg Building.

[LIBRARIAN'S DAILY SALES RECORD], 1924-27, 1933--, 8 vols. Title varies: Cash, 1924, 1 vol.; Day, 1924-25, 1 vol.; Journal, 1926-27, 1 vol. The daily record of the literature and other supplies sold at the reading room, the date of the sale, and the selling price. In custody of the librarian, Mrs. Margaret Chamberlain, at the reading room in the Hollenberg Building.

DOUBLE ENTRY LEDGER (Librarian's Customer Ledger), 1921--, 5 vols. Title varies: Single Entry Ledger, 1921-32, 3 vols. The itemized account of each customer at the reading room, 1921--, showing debits, credits, and the balance due, and a self-contained alphabetical index, 1933--, showing the name of the customer and the page reference to the record. In custody of the librarian, Mrs. Margaret Chamberlain, at the reading room in the Hollenberg Building.

RECORD (Librarian's Record of Reports), 1938--, 1 vol., the monthly, semi-annual, and annual reports of the reading room librarian, showing receipts and disbursements. In custody of the librarian, Mrs. Margaret Chamberlain, at the reading room in the Hollenberg Building.

5. CHRISTIAN SCIENCE SOCIETY, 1906-27, 1934--, 12th and Church Streets, Mena, Polk County.

Mrs. Jennie Worthington was Christian Science practitioner in Mena about 1901-3; (1) but no organization was affected till 1905. A "Group" was formed on January 1 of that year and a petition to organize was presented to The Mother Church in Boston. Mrs. Minnie G. Crook was the First Reader, and Mrs. A. V. Swaty the Second Reader. The Society received its bylaws from The Mother Church, April 1, 1906. (2) A reading room was opened, and services were held in various public halls (3) until a church was erected in 1912. The services were continued in the church till December 1927, when the Society was disbanded. Another "Group" was formed in January of the next year, but it was not recognized officially as a Society till 1934. (4)

MINUTE BOOKS, 1905-7, 1912--, 5 vols., showing the minutes of the meetings, the membership roll, and the treasurer's financial reports. Kept at the church.

TREASURER RECORD, 1912--, 2 vols., the financial record of the Society. Kept at the church.

6. SECOND CHURCH OF CHRIST, SCIENTIST, 1907-11, 20th and Louisiana Streets, Little Rock, Pulaski County.

A group of Christian Scientists, including Mrs. Anna Robinson and other pioneer members of the First Church of Christ, Scientists, in Little Rock commenced to hold separate meetings in the Masonic Temple about 1905. (5) Two years later in July 1907, they organized the Second Church of Christ, Scientists, in Little Rock with 19 members. Mrs. Lessie Peay was the First Reader. (6) The services were held in the Masonic Temple, 5th and Main Streets, where Mrs. Robinson had her practitioner's office, and a reading room was also opened there. The Second Church bought a lot on

-
- | | |
|--|---|
| (1) <u>Christian Science Journal, Publisher's Department, XIX (1901-2), p. xxxi; XX (1902-3), p. xxxi.</u> | (4) Information obtained from Mrs. T. R. Jones, Jr., church clerk, Mar. 3, 1941. |
| (2) Information obtained from Mrs. T. R. Jones, Jr., church clerk, Mar. 3, 1941. | (5) Mrs. Anna Robinson (manuscript in the possession of her daughter, Mrs. Nora Mangel). See entry 4. |
| (3) <u>Christian Science Journal, Publisher's Department, lists the places of worship.</u> | (6) Information obtained from Mrs. Lessie Peay, June 4, 1940, by J. Olson Anders. |

the corner of 20th and Louisiana Streets in 1908 and began the construction of a chapel which was completed in season for Thanksgiving service in 1910. In the same year the First and Second Churches reached an agreement and were reunited, January 30, 1911. (1)

No separate records located. The records were lost when the Masonic Temple, 5th and Main Streets, burned.

7. FIRST CHURCH OF CHRIST, SCIENTIST, 1909-- (existed as a Society, 1907-9), Forest and Lafayette Streets, Fayetteville, Washington County.

Christian Science practitioners had located in Fayetteville at earlier dates (2) and occasional meetings had been held in various homes; but the informal Sunday afternoon meetings which began at the home of Mrs. Inez Droke, 103 Holly Street, about 1904, mark the inception of continuous Christian Science activity in Fayetteville. The result of these meetings was the organization of a Christian Science Society at her home, March 17, 1907. Mrs. Droke was elected First Reader and Mrs. Willie Deane, Second Reader. The Society held its meetings in the Hight Building on the corner of Center and Block Streets. The Society was converted into the First Church of Christ, Scientist, in Fayetteville, June 14, 1909, (3) and a reading room was opened. The services were held at various halls in the city. (4) A lot was bought at Mt. Nord, W. Lafayette and Forest Streets, in February 1925, but the church was not erected and opened for service till March 15, 1936. (5) The building is English in architecture, constructed of mingled mat-faced brick in tones of red and dark gray. The auditorium with its simple cream-colored walls and woodwork has a seating capacity of 250. The Sunday school rooms are back of the rostrum.

[MINUTES OF THE CHURCH AND THE CHURCH BOARD], 1907-10, 1915, 1918-20, 1923-31, 5 vols., minutes of the church and board meetings, in custody of the chairman of the board, Mrs. Ada E. Miller, at the church.

8. FIRST CHURCH OF CHRIST, SCIENTIST, 1909--. 121 Martin Place, Pine Bluff, Jefferson County.

Local students of Christian Science commenced to hold informal meetings

-
- (1) Christian Science Journal, XXXI (1913-14), 535. See entry 4.
 - (2) See p. 3 above.
 - (3) Mrs. Claude Miller, Brief History of the First Church of Christ, Scientist, (ms).
 - (4) The halls in which the services were held, 1909-36, are listed in the Christian Science Journal, Publisher's Department.
 - (5) Mrs. Claude Miller, Brief History of First Church of Christ, Scientist, (ms).

in Eagles Hall on Barraque Street in Pine Bluff about 1905. (1) Miss Neal Woodall was Christian Science practitioner in Pine Bluff about 1907. (2) On May 15, 1909, the First Church of Christ, Scientist, was organized at 108 Pine Street with 16 charter members. Mrs. Neal McGaughey was the First Reader. The services were held in various public halls until a brick veneer church, Colonial type, was erected at 121 Martin Place in 1918. The building seats 250. The Sunday school has been a very active factor in the work of the church. The reading room was maintained in the church building until it was moved to the Simmons Building in 1939. (3) Incorporation: Circuit Clerk, Jefferson County, Pine Bluff, Charters, Book 2, p. 176.

CHURCH MINUTES, 1909--, 3 vols., showing the proceedings of all meetings, both stated and call, including the reports of all church officials. In custody of the clerk, Miss Inez Jenkins, at the church.

CHURCH ROLL BOOK, 1909--, 1 vol., showing the names of all members of the church, the dates of admission, withdrawal, and removal, and other pertinent information. In custody of the clerk, Miss Inez Jenkins, at the church.

TREASURER'S JOURNAL RECORD, 1909--, 3 vols., showing the collection and disbursement of the church funds. In custody of the treasurer, Mrs. Osa Whidden, at the church.

SUNDAY SCHOOL SUPT'S RECORD, 1909--, 5 vols., showing the names of the officials, the teachers and pupils by classes, and the collections. In custody of the superintendent of the Sunday School, Mrs. Cornelia Levine, at the church.

LIBRARIAN'S STOCK RECORD, 1909--, 3 vols., showing the inventory of the stock (literature and other supplies) purchased, the stock sold, and the balance on hand at the reading room at each inventory. In custody of the librarian at the reading room in the Simmons Building.

LIBRARIAN'S DAILY SALES RECORD, 1909--, 4 vols., showing the daily record of the literature and other supplies sold at the reading room, the date

(1) Mrs. Mary J. Nowland, Historical Sketch of First Church of Christ, Scientist, (ms), May 10, 1940; Kenneth Francis, "Churches of Pine Bluff: Their History and Development," Pine Bluff Graphic, January 24, 1940. The contents and style of the article in the Graphic, parallel Mrs. Now-

land's sketch very closely. The latter was very likely written earlier than the date on the manuscript indicates.

(2) Christian Science Journal, Publisher's Department, XXV (1907-8), p. xlii.

(3) Nowland, Historical Sketch (ms).

of the sale, and the selling price. In custody of the librarian at the reading room in the Simmons Building.

LIBRARIAN'S CUSTOMER LEDGER, 1929--, 2 vols., the itemized account of each customer at the reading room, showing debits, credits, and the balance due, and a self-contained alphabetical index, showing the name of the customer and the page reference to the record. In custody of the librarian at the reading room in the Simmons Building.

LIBRARIAN'S RECORD OF REPORTS, 1909--, 4 vols., the monthly, quarterly, and annual reports of the reading room librarian, showing receipts and disbursements. In custody of the librarian at the reading room in the Simmons Building.

9. CHRISTIAN SCIENCE SOCIETY, 1909-33, (in existence at present as an informal group), W. Walnut Street, Walnut Ridge, Lawrence County.

A small group of Christian Scientists met at the home of Mrs. Ella Phelps in Walnut Ridge in November 1909 and organized a Christian Science Society. Mr. James D. Phelps was the First Reader. The services were held in private homes and the Woodman Hall until the present church, a frame building, rectangular in form, was erected on W. 4th and Main Streets in 1912. The Society failed to meet the official requirements for a Christian Science Society in 1933 and ceased to be listed in the Christian Science Journal. The church was moved to W. Walnut Street in 1936 and given a cobblestone veneer. (1) Active organization: Sunday School.

CHRISTIAN SCIENCE SOCIETY (The Church Record), 1931--, 1 vol., including: The church minutes; the register, showing the officials, and the membership, active and inactive; the financial record; and the Sunday school record. In custody of the Second Reader, Mrs. Jane Sloan Gibson, at her residence in Walnut Ridge.

CHRISTIAN SCIENCE SOCIETY (transcript of the original record), 1909--, 1 vol., including: The church minutes; the register, showing the officials, and the membership, active and inactive; the financial record; and the Sunday school record. Particularly valuable for the earlier years since the original record for those years has been lost. In custody of a charter member, Mrs. Ella Phelps, at her residence in Walnut Ridge.

(1) Information obtained from Mrs. Ella Phelps, Charter member, December 1940, by June Madden Wallis. Announcements

for the years 1911-34 appeared in the Christian Science Journal, Publisher's Department.

10. CHRISTIAN SCIENCE SOCIETY, 1910--, 815 Miller Street, Helena, Phillips County.

The first Christian Science service in Helena was held in January 1910 in the Interstate Bank Building. A Christian Science Society was organized immediately afterwards, January 4, 1910. (1) Mrs. Nyna Gould Ware was the First Reader. A reading room was opened in the Interstate Bank Building, (2) and the services continued to be held there until June 27, 1914. On that date the Jewish Synagogue on the corner of Walnut and Perry Streets, which had been purchased for the purpose, was opened for services. Sunday School was opened in 1916 and continued until 1928. The Jewish Synagogue was sold in February 1930, and the services were held in the Y. W. C. A. Building, 326 Walnut Street, until 1939. The present building, a residence at 815 Miller Street, had been bought in 1931 but was not opened for services till September 1939. The Sunday School was reopened early in 1940. (3)

MINUTE RECORD, 1910-21, 1923--, 9 vols., the minutes of both the church and the board meetings. Kept at the church.

HISTORY AND MEMBERSHIP RECORD, 1910--, 1 vol., showing the membership roll, 1910--, and the history of the church, 1910--. Kept at the church.

TREASURER'S RECORD, 1910-13, 1916--, 6 vols., showing collections and disbursements, itemized and in totals. 1910-13, 1916-29, 4 vols., at the church; 1930--, 2 vols., in custody of Miss Carrie Clark at her residence in Helena.

SUNDAY SCHOOL RECORD, 1916-28, 2 vols., showing the record of attendance and collections. Kept at the church.

LIBRARIAN RECORD, 1918-32, 1939--, 4 vols., showing the literature sold and the proceeds. Kept at the church.

11. CHRISTIAN SCIENCE SOCIETY, 1912--, 10th and Maxwell Streets, Siloam Springs, Benton County.

Christian Science literature was read in Siloam Springs as early as 1898. In 1902 two members of The Mother Church began to hold regular meetings in their homes. The attendance increased and the meetings were continued until 1909 when some of the students left the city. The meetings were resumed later in the same year when Mrs. Isabella Hotchkiss

(1) History and Membership Record.

(2) Christian Science Journal, Publisher's Department, XXVIII (1910-11), p. vii.

(3) History and Membership Record; the places of worship are also listed in the Christian Science Journal, Publisher's Department.

moved to the city. They were interrupted again the next year, and the permanent work did not start till 1912. (1) On December 31 of that year a group of eight organized a Christian Science Society at the home of Mr. and Mrs. W. S. Edwards. (2) The Society was recognized as a branch of The Mother Church. (3) Mrs. Meti S. Seward, the Christian Science practitioner in the city, (4) was elected First Reader, and Mrs. Elizabeth Hazlett Pratt, Second Reader, June 25, 1913. (5) The services were held at various places in the city until 1922. (6) On January 20 of that year the United Presbyterian church, a plain frame building on the corner of 10th and Maxwell Streets, was purchased and remodeled. (7) The first service in the newly acquired church was held February 5, 1922. (8) It has an auditorium which seats about 200 and separate Sunday school rooms and a reading room.

BOOK OF CLERK, 1912--, 3 vols. Title varies: Minute Book Christian Science Society of Siloam Springs, Arkansas, 1912-20, 1 vol.; Christian Science Society of Siloam Springs, Arkansas, Book of Clerk, 1920-30, 1 vol. The church minutes, showing the proceedings at the church meetings, both stated and call. 1912-30, 2 vols., in custody of member of the board, Mrs. Edward J. Morris, Rt. 1, Siloam Springs; 1930--, 1 vol., in custody of clerk, Mrs. Josephine Richardson, Gentry.

MINUTES OF MEETINGS OF BOARD OF DIRECTORS, approx. 1920-22, approx. 1925--, 6 vols. Title varies: Property of Board of Directors, Siloam Springs, Christian Science Society, approx. 1920-22, 1 vol.; Board of Directors, Christian Science Society, Nos. 1-2, approx. 1925-29, 2 vols.; no title, No. 3, approx. 1929-31, 1 vol. The minutes of the board of directors, showing the proceedings at the board meetings, both stated and call. 1920-22, 1925-31, 4 vols., in custody of member of the board, Mrs. Edward J. Morris, Rt. 1, Siloam Springs; 1931--, 2 vols., in custody of clerk, Mrs. Josephine Richardson, Gentry.

SINGLE ENTRY LEDGER, 1912--, 3 vols. Title varies: D. E. Ledger, 1912-28, 1 vol.; Ledger, 1928-38, 1 vol. The financial record, showing the receipt and disbursement of the church funds. In custody of the treasurer, Edward J. Morris, Rt. 1, Siloam Springs.

-
- | | |
|--|---|
| (1) Information obtained from Mrs. Edward J. Morris (letter), November 1940. | (5) Minute Book, June 25, 1913 |
| (2) Minute Book of Christian Science Society of Siloam Springs, Dec. 31, 1912. | (6) The places of Service are listed in the <u>Christian Science Journal</u> , Publisher's Department. |
| (3) <u>Christian Science Journal</u> carried the first announcement in 1914-15. See the Publisher's Department, XX.II(1914-15), p. viii. | (7) <u>Christian Science Society of Siloam Springs, Arkansas</u> . Book of Clerk, Dec. 11, 1921; Jan. 18, 1922. |
| (4) <u>Ibid.</u> , XXX(1912-13), p. xlii. | (8) Information obtained from Mrs. Edward J. Morrie (letter), November 1940. |

SUNDAY SCHOOL CLASS, 1923-24, 1925--, 7 vols. Title varies: Sunday School Record, 1923-24, 1 vol. The Sunday school record, showing the attendance and collections. 1923-24, 1 vol., in custody of member of the board, Mrs. Edward J. Morris, Rt. 1, Siloam Springs; 1925--, 6 vols., at the church.

12. FIRST CHURCH OF CHRIST, SCIENTIST, 1914--, (existed as a Society, 1906-14), 517 N. Main Street, Monticello, Drew County.

The immediate impetus to Christian Science organization in Monticello was the arrival of two Christian Science students, Dr. and Mrs. Frank Colby, in February 1905. At first the services were held in the homes. When the increasing attendance made these inadequate, Curry Hall was rented and used till 1910. The Christian Science Society was organized in this hall, probably on July 20, 1906, when Mrs. Anna Robinson of First Church of Christ, Scientist, in Little Rock was present. (1) Mrs. Theodora Dickson, the practitioner in the city at the time, (2) was a great help in the work. Mrs. Willie Duke was the First Reader. The church at 517 N. Main Street, the first Christian Science church built in the State, was completed in 1910 (3) but was not dedicated till 1924. (4) The building is of the Colonial type of architecture, stucco finish, with an impressive dome, plain frosted glass windows, and tall pillars in front. The church proper seats 150, the balcony 50, and there is a reading room and a Sunday school room. The Society was dissolved in January 1914, and reorganized as First Church of Christ, Scientist, (5) in Monticello.

[CHURCH RECORD], 1923--, 2 vols., showing the church minutes, the membership roll, and the financial record. In custody of the clerk, Mrs. Corinne Owens, at her residence in Monticello.

13. FIRST CHURCH OF CHRIST, SCIENTIST, 1915--, (existed as a Society, 1910-15), 1348 Central Avenue, Hot Springs, Garland County.

The Phillips family, ardently devoted to Christian Science, came to Hot Springs in 1900; but it was not till 1905, when Miss Pressie Johnson

-
- (1) Christian Science Journal, XXXV (1917-18), 276-277, says that a Society of twelve was organized in July 1906. Mrs. Robinson was there, July 20, 1906. Twelve people listened to her address.
- (2) Christian Science Journal, Publisher's Department, XXIV (1906-7), p. xxxix.
- (3) "First Church of Christ, Scientist, Monticello, Arkansas,"

- Christian Science Journal, XXXV (1917-18), 276-277.
- (4) See Mrs. Anna Robinson's dedicatory address, Thanksgiving Day, Nov. 27, 1924, (ms).
- (5) "First Church, Monticello," Christian Science Journal, XXXV (1917-18), 276-277. The first announcement is in the Christian Science Journal, Publisher's Department, XXXIII (1915-16), p. viii.

joined them, that they began to hold informal services. There was a steady growth in interest and attendance. The meetings were held in the different homes till 1909. (1) Various public halls were used during the next three years. (2) The group was sufficiently large in 1910 to open a reading room, start a Sunday school, and organize a Society. (3) Mrs. Annie E. Jacobs was First Reader. (4) Mrs. Emma B. Westcott was the Christian Science practitioner in the city. (5) In 1912 the Society leased the building formerly occupied by the First Baptist Church. When this property changed hands and the new owner would not renew the lease, the Society leased a public hall for temporary use and planned the construction of a church. The new church at 1348 Central Avenue was ready for occupancy in May 1915, and the Society was reorganized as First Church of Christ, Scientist, in September of the same year. (6) Mrs. Emma B. Westcott was the First Reader. (7) The church building was dedicated in June 1917. It is a frame building, bungalow style, seating capacity about 200. (8) Incorporation: Circuit Clerk, Garland County, Record of Incorporations, Book D, p. 175.

RECORD, 1915-- , 1 vol., including the minutes, the membership roll, the treasurer's record of income and expenditures, and the Sunday school record. In custody of the clerk, Mrs. Marie Wootten, 135 Magnolia Street, Hot Springs.

14. CHRISTIAN SCIENCE SOCIETY, approx. 1917--approx. 1923, Harrison, Boone County.

The Christian Science Journal carried the first announcement of the Christian Science Society in Harrison in 1917-18. Mrs. Mary Porter was the First Reader. (9) The services were held in various public buildings. (10) The Christian Science Journal carried the last announcement in 1922-23. (11)

No records have been located.

-
- | | |
|---|---|
| (1) Mildred Phillips, A Brief History of the Christian Science Movement in Hot Springs, Arkansas, (ms). | (6) Phillips, Brief History (ms). |
| (2) The places of worship are listed in the <u>Christian Science Journal</u> , Publisher's Department. | (7) <u>Christian Science Journal</u> , Publisher's Department, XXXVIII (1915-16), p. viii. |
| (3) Phillips, Brief History (ms). | (8) Phillips, Brief History (ms). |
| (4) <u>Christian Science Journal</u> , Publisher's Department, XXVII (1909-10), p. vi. | (9) Publisher's Department, XXXV (1917-18), p. viii. |
| (5) <u>Ibid.</u> , XXIX, (1911-12), p. vii. | (10) The places of worship are listed in the <u>Christian Science Journal</u> , Publisher's Department. |
| | (11) Publisher's Department, LI (1922-23), p. xi. |

15. FIRST CHURCH OF CHRIST, SCIENTIST, 1918-- (existed as an informal organization, 1901-approx. 1903, as First Church of Christ, Scientist, approx. 1903-10, and as a Society, 1910-18), 612 Walnut Street, Texarkana, Miller County.

Christian Scientists commenced to hold informal services in Texarkana in 1901. (1) The Mother Church recognized the organization as the First Church of Christ, Scientist, Texarkana, Texas, about 1903. Anna K. McCullam, the practitioner in the city, was the First Reader. (2) In 1910 it was reorganized as the Christian Science Society, Texarkana, Texas. (3) The services were held in various public halls and private residences till 1918. (4) In that year the Society was reorganized as the First Church of Christ, Scientist, Texarkana, Arkansas, and a plain gray stucco church was erected at 612 Walnut Street and dedicated the next year, 1919. (5)

CLERK'S REPORT, 1928-- , 4 vols. Title varies: Letters, 1928-37, 3 vols. The minutes of the church and the board meetings and the financial statements. Kept at the church.

REGISTER OF MEMBERS, 1910-- , 1 vol., showing the membership roll. Kept at the church.

LEDGER (Reading Room Report), 1930-- , 1 bundle, 1 vol. Title varies: Reading Room Report, 1930-35, 1 bundle. The reading room record, showing the literature and other supplies received, the sales, the disbursements, the cash on hand, the books loaned, and the list of visitors. In custody of the librarian, Mrs. Ophelia Mathews, at the reading room.

16. FIRST CHURCH OF CHRIST, SCIENTIST, 1923-- (existed as a Society, 1911-23), 218 W. Cherry Street, Rogers, Benton County.

The Christian Science movement in Rogers received a new impetus when Rev. W. S. Baker, the Presbyterian pastor in Bentonville, and the Eastman family, also of that city, joined the small number of Christian Scientists in Rogers. In July 1911, they met in Mrs. Higgly's home and

-
- (1) Information obtained from Mrs. Virginia Alston, church clerk, January 1941, by Kathleen L. Gray.
- (2) Christian Science Journal, Publisher's Department, XXI (1903-4), p. xxv.
- (3) Ibid., XXVII (1910-11), p. xliii.
- (4) The places of worship are listed in the Christian Science Journal, Publisher's Department. The city of Texar-

- kana straddles the Texas-Arkansas State line, and one church serves the entire membership in the city. Up to 1918 the services were held on the Texas side of the line except during the years 1907-8 and 1912-15.
- (5) Information obtained from Mrs. Virginia Alston, church clerk, January 1941, by Kathleen L. Gray.

organized a Christian Science Society. Mr. Baker was the First Reader. (1) The meetings were held in private homes at first and later in various public halls until 1927. (2) The Society attained a sufficient number of members to reorganize as First Church of Christ, Scientist, in Rogers, January 1, 1923. (3) Mrs. Fidella Vinetta Johnson was the practitioner in the city at the time. (4) A Sunday School was organized, and steps taken to erect a church. The first service in the new church was held November 5, 1927, but the church was not dedicated till November 2, 1930. The church has been described as "a beautiful red brick" structure with two reading rooms in front and a large sanctuary. (5)

MINUTES OF CHURCH, 1921--, 1 file box, 1 vol., showing the minutes, 1921--, and the register of members, 1930--. In custody of the clerk, Mrs. Lizzie Miller, 508 Cypress Street, Rogers.

CHURCH FINANCE, 1931--, 1 vol., showing collections and disbursements, itemized and in totals. In custody of Ed Adams, Rt. 1, Avoca.

SUNDAY SCHOOL RECORDS, 1930--, 1 vol., showing list of officers, record of attendance, and collections. In custody of Mrs. Hazel Reeves, 1027 S. Arkansas Street, Rogers.

17. FIRST CHURCH OF CHRIST, SCIENTIST, 1924--, (existed previously as a Society, 1912-24, 213 W. Washington Avenue, Jonesboro, Craighead County.

Mrs. Mayme Cooley, a Christian Science practitioner, came to Jonesboro from New York State in 1905. Mrs. Cooley soon interested three others in the study of Mrs. Mary Baker Eddy's Science and Health. In 1907 these four students of Christian Science commenced to hold meetings in their respective homes. Mrs. Cooley acted as reader. In 1910 when the increase in membership made the private homes inadequate the meetings were transferred to a public hall. (6) February 23, 1912, the group, now

-
- (1) "History of Church of Christ, Scientist, Rogers, Arkansas," (hereafter cited as "History") in Rogers Daily News, Nov. 3, 1930.
- (2) The places at which services were held are listed in the Christian Science Journal, Publisher's Department.
- (3) "History" in Rogers Daily News, Nov. 3, 1930; the first announcement of the church appeared in the Christian Science Journal, Publisher's Department, XLI (1923-24), p. ix.
- (4) Mrs. Johnson's card appeared in the Christian Science Journal, Publisher's Department, XL (1922-23), p. xxxvi.
- (5) "History" in Rogers Daily News, Nov. 3, 1930.
- (6) Mrs. C. N. Carson and Mrs. Mayme Cooley, History - First Church of Christ, Scientist, (ms); information obtained from Mrs. Mayme Cooley, Charter Member, November 1940, by Mary K. Paul.

composed of thirteen members, was able to meet the requirements of The Mother Church and organized as a Society. Mrs. Chas. N. Carson was the First Reader and Mrs. Mary C. Maxwell the Second Reader. (1) From that time until 1922 the Society held its services in a church on Church and Monroe Streets, leased for the purpose. During the next three years the meetings were held in various public halls. In October 1924 the Society was reorganized as the First Church of Christ, Scientist, in Jonesboro. The next year a frame residence at 213 W. Washington Avenue was acquired and remodeled for a church. (2)

MINUTES, 1912--, 5 vols. Title varies: Minute Book, 1912-21, 1 vol.; Paragon Note Book - Minutes, 1921-23, 1 vol.; Minute Book, 1923-35, 2 vols. The church record, showing the minutes of both the church and the board meetings, 1912--, the membership roll, 1912-23, and the financial record, 1912--. In custody of the clerk, Mrs. Averil Sweeney, Room 203, Bank of Jonesboro Building, Jonesboro.

18. CHRISTIAN SCIENCE SOCIETY, 1926--, 451 N. Jefferson Street, El Dorado, Union County.

The rise of the oil industry in the early post-war period brought a rapid increase in the population of El Dorado and incidentally a group of Christian Scientists to the city. On March 11, 1923, these met and arranged to conduct services. The first meeting was held the next Sunday morning, March 13, and a Sunday school was organized the next year; but, on account of the fluctuations in the population, the attendance varied, so that they could not take steps to convert the informal organization into a Society before April 25, 1926. The Society was recognized as a branch of The Mother Church in July 1926. (3) Miss Echsah Groves, the practitioner (4) who had been identified with the movement in the city from its inception and had served in various capacities, was the First Reader. (5) The meetings continued to be held in various public buildings (6) until 1928 when the Society bought a frame dwelling at 451 N. Jefferson Street and converted it into a house of worship. The Society was incorporated, May 22, 1928, and commenced to hold the meetings in its new church the following August. The building was dedicated, November 22, 1931. (7) In May 1933, a reading room was opened in the church.

-
- (1) Minute Book, February 28, 1912.
(2) Carson and Cooley, History (ms). The places where the services have been held are also listed in the Christian Science Journal, Publisher's Department.
(3) Miss Echsah Groves, History of Christian Science Society (ms).

- (4) Miss Groves' first card appeared in the Christian Science Journal, Publisher's Department, XLII (1924-25), p. xi.
(5) Groves, History (ms).
(6) The places of worship are listed in the Christian Science Journal, Publisher's Department.
(7) Groves, History (ms).

MINUTES OF CHRISTIAN SCIENCE SOCIETY, 1926--, 1 lock box, 1 file box, showing the deeds and abstracts, 1928, the church minutes, 1926--, a history of the church (ms), 1923-31, by Miss Echsah Groves, and the treasurer's financial reports, 1926--. In custody of Miss Ruth Alice Wilson: 1926-33, 1 lock box, at the Bank of Commerce, El Dorado; 1926--, 1 file box, in the reading room at the church.

SUNDAY SCHOOL RECORDS, 1924--, 2 bundles, showing the attendance and collections and the registration of new pupils. In custody of Miss Ruth Alice Wilson at the church.

19. SECOND CHURCH OF CHRIST, SCIENTIST, 1928-36, Woman's City Club, 4th and Scott Streets, Little Rock, Pulaski County.

In May 1928 a group of members of the First Church of Christ, Scientist, in Little Rock organized the Second Church of Christ, Scientist. Mrs. Lessie Peay was the Christian Science practitioner identified with the church, and Mrs. Laura Poe the First Reader. The services were held at the Woman's City Club, 4th and Scott Streets, during the entire existence of the church. The First and Second Churches were gradually brought together again and reunited in 1936. (1)

No records located.

20. CHRISTIAN SCIENCE SOCIETY, 1933--, 116 S. Broadway Street, Blytheville, Mississippi County.

Several residents in Blytheville became interested in Christian Science through casual contacts and the reading of Christian Science literature. Christian Scientists also moved in from other communities. These people began to hold meetings in their homes; but it was not until March 15, 1933, that they could meet the requirements and organize a Society. (2) Mrs. Lillian S. Neblett was the Christian Science practitioner in the city at the time. (3) The meetings have been held in various public buildings. At present the Society uses four rooms in a plain brick office building. The auditorium seats fifty, and there are two Sunday school rooms and a reading room.

(1) Information obtained from Mrs. Lessie Peay, June 4, 1940, by J. Olson Anders. The first announcement of the Second Church in the Publisher's Department of the Christian Science Journal appeared in vol. XLIX (1931-32), p. xiii; the last in vol. LIV (1936-37), 9. See entry

4.
(2) Mrs. Mildred Stevens, A Brief Chronicle of Christian Science Society, Blytheville, Arkansas, (ms). Mrs. Stevens is a charter member of the Society.
(3) Christian Science Journal, Publisher's Department, LI (1933-34), p. xlvi.

LEDGER (The Church Minutes), 1933--, 1 vol. In the custody of Mrs. Lillie Mae Hatcher, 5th Street, Blytheville.

FINANCIAL RECORD, 1933--, 1 vol., showing the record of contributions and disbursements. In custody of M. D. Robbins, Highway 61, Blytheville.

21. CHRISTIAN SCIENCE SOCIETY, 1936--, 829 $\frac{1}{2}$ Railroad Avenue, Conway, Faulkner County.

Mrs. Ida A. R. Stevens was a Christian Science practitioner in Conway about 1912-13; (1) but no organization was effected till more than twenty years later. Mr. Homer Hess came to Conway from Hutchinson, Kansas, in 1928 to assume the position of professor and head of the Department of Music at Arkansas State Teachers College. Mr. Hess was instrumental in interesting the people in Christian Science and in holding meetings in public buildings and private homes. (2) These meetings were continued until 1936 when the group had sufficient members to comply with the requirements for a Christian Science Society. (3) Mr. Hess was the First Reader. A reading room was opened, and a Sunday school was organized in 1939. The Society has continued to use various public halls for its meetings. (4)

CLERKS RECORDS, 1936--, 1 vol., the church minutes. In custody of the clerk, Mrs. A. H. Allen, 1930 College Avenue, Conway.

TREASURER'S RECORD, 1936--, 1 vol., showing collections and disbursements. In custody of the treasurer, Mrs. A. H. Allen, 1930 College Avenue, Conway.

22. CHRISTIAN SCIENCE SOCIETY, 1936--, 518 $\frac{1}{2}$ Main Street, Arkadelphia, Clark County.

Christian Scientists had lived in Arkadelphia for twenty years before they had a sufficient number to effect an organization. Services were held at the home of Mrs. M. M. Hamilton in November 1935, and the Society was organized May 1, 1936. (5) The Masonic Hall at 518 $\frac{1}{2}$ Main Street

(1) Christian Science Journal, Publisher's Department, XXX (1912-13), p. xlii.

(2) Information obtained from Professor Homer Hess, March 1940, by Nona T. McCollum.

(3) The first announcement appeared in the Christian Science Journal, Publisher's Department, LV (1937-38), 9.

(4) Information obtained from

Mrs. C. C. Ayres and Professor Homer Hess, March 1940, by Nona T. McCollum.

(5) Information obtained from Miss Grace Lou Hamilton, June 1940, by Charlene Womack. The Christian Science Journal, Publisher's Department, LV (1937-38), 9, carried the first announcement of the Society.

was secured for the services. (1) Grace Lou Hamilton was the First Reader. (2)

BUSINESS MEETING RECORD, 1936--, 1 vol., showing the church minutes and the membership roll. In custody of Miss Grace Lou Hamilton at her residence in Arkadelphia.

NOTE: Besides the Churches of Christ, Scientist, and the Christian Science Societies, which are recognized branches of The Mother Church, Christian Scientists have organized informal groups and maintain services at the following places:

23. BATESVILLE, 1912--, Batesville, Independence County.

Christian Scientists commenced to hold informal meetings in Batesville in 1912. Mr. A. L. Crouch, Sr., was the First Reader. The meetings have been continued in private residences and public halls (3) up to the present. (4)

FINANCIAL RECORD, 1912--, 1 vol. In custody of the treasurer, Mrs. J. O. Gray, at her residence.

24. CAMDEN, approx. 1923--, Camden, Ouachita County.

Christian Science services began in Camden about 1923 when Mrs. A. Newman came to the city. The group called themselves the Christian Science Circle. (5) Services have been continued to the present. (6)

25. STUTTGART, 1927--, 1017 S. College Street, Stuttgart, Arkansas County.

The Christian Scientists in Stuttgart effected an informal organization in 1927. Mrs. Ella D. Oaksmith, the practitioner in the city, was the First Reader. Services have been held continuously in private homes and various public halls. Active organization: Sunday School. (7)

(1) The place of worship is listed in the Christian Science Journal, Publisher's Department.

(2) Information obtained from Grace Lou Hamilton, June 1940, by Charlene Womack.

(3) Information obtained from A. L. Crouch, Jr., First Reader, January 1941, by John

Q. Wolf.

(4) Batesville Daily Guard, January 18, 1941.

(5) Letter from Mrs. A. Newman, April 24, 1941.

(6) Camden News, March 29, 1941.

(7) Information obtained from Mrs. D. P. Oaksmith by Elva R. Roach, March 3, 1941.

No records have been located.

26. McGEHEE, approx. 1931--, McGehee, Desha County.

Christian Scientists began to hold services in McGehee about 1931. The services have been continued in various public halls and private homes up to the present. (1)

[CURRENT MEMBERSHIP AND FINANCIAL RECORD], undated, 1 vol. In custody of the Reader, Russell Gard, at his residence.

27. FORREST CITY, 1938--, Public Library, Forrest City, St. Francis County.

The inception of interest in the Christian Science principle in Forrest City is traced back to the informal meetings in the Avery Hotel in the latter 1880's and especially to instruction by George W. Wheeler of Memphis, Tennessee, a student of Mary Baker Eddy, who came to Forrest City in response to an invitation. In the early 1890's the arrival of Mrs. Susan Fussell Dunn, the wife of Congressman Poindexter Dunn, gave new zest to the movement. Meetings were held in private homes and in various public halls. An informal group was organized in January 1938 in the hope of attaining recognition by The Mother Church. The group commenced to hold the services in the city library in 1940. (2)

MINUTE BOOK, 1938--, 1 vol., showing the proceedings at the business meetings and the membership list. In custody of the clerk, Miss Dorothy McCurdy, 400 N. Rosser Street, Forrest City.

FINANCIAL RECORD, 1938--, 1 vol., showing the receipts and disbursements. In custody of the clerk, Miss Dorothy McCurdy, 400 N. Rosser Street, Forrest City.

(1) Information obtained from
Russell Gard, May 1941, by
Reinhardt C. Reitzammer.

(2) Information obtained from

Henry F. P. Gorman, First
Reader, by Ruth H. Plummer,
March 3, 1941.

CHRISTIAN SCIENCE PRACTITIONERS IN ARKANSAS (1)

BLYTHEVILLE

Neblett, Mrs. Lillian, CS 713 Main St.

FAYETTEVILLE

Barton, Mrs. Lelia Brown, CS 415 Gunter Ave.

FORT SMITH

Beck, Mrs. Elizabeth Royer, CS 720 N. 5th St.
Beck, Herbert M., CSB 720 N. 5th St.

HOT SPRINGS

Bedingfeld, Mrs. Katherine, CS 106 Hawthorne St.
Cartwright, Mrs. Aleph E., CS 203 Citizen's Bldg.
Ivey, Mrs. Corrine M., CS 1316 Malvern Ave.

JONESBORO

Norman, Mrs. Margaret L., CS Nettleton Rd.

LITTLE ROCK

Bradbury, Mrs. Cara, CS 1117 W. 23rd St.
Bingle, Mrs. Joe Enzo, CS 923 Louisiana St.
Crawford, Mrs. Ethel B., CS 823 Boyle Bldg.
Deason, Mrs. Nina K., CS 701 E. 21st St.
Evans, Mrs. Mary, CS 322 Boyle Bldg.
Gibbs, Mrs. Ida M., CS 2321 Ringo St.
Horn, Mrs. Minnie A., CS 312 Exchange Bldg.
Kirst, Mrs. Mary Edson, CS 207 Exchange Bldg.
O'Leary, Mrs. Fannie C., CS 201 W. 22nd St.
Peay, Mrs. Lessie H., CS 112 W. 19th St.
Storey, Mrs. Dollie M., CS 714 Boyle Bldg.
Suarez, Mrs. Angie E., CS 3401 High St.
Wadley, Mrs. Effie Pearl, CS 1407 Wolfe St.
Walker, Mrs. Emily Hart, CS Hot Springs Pike
Wilson, Miss Blanche, CS 922 Boyle Bldg.

(1) The Christian Science practitioners keep private records, showing the name of

the persons treated and the dates of the treatment.

PINE BLUFF

Henry, Mrs. Annabel, CS
Oaksmith, Mrs. Ella D., CS

715 W. 13th St.
Hotel Pines

ROGERS

Auchmuty, Mrs. Maybelle, CS

SPRINGDALE

Carter, Miss Minnie, CS

Rt. 4.

BIBLIOGRAPHY

- Carson, Mrs. C. N., and Cooley, Mrs. Mayme, History - First Church of Christ, Scientist, Jonesboro, Arkansas, (manuscript, written in 1933, located at The Mother Church, Boston).
- Christian Science Journal. Boston, The Christian Science Publishing Society, 1883--. 59 vols.
- Christian Science Monitor. Boston, The Christian Science Publishing Society, 1908--. 33 vols. Published, also, in French, German, Scandinavian, Dutch, and Braille editions.
- Christian Science Sentinel. Boston, The Christian Science Publishing Society, 1898--. 43 vols.
- Eddy, Mrs. Mary Baker, Manual of the Mother Church, The First Church of Christ, Scientist, in Boston, Massachusetts, (89th edition). Boston, Trustees under Will of Mary Baker G. Eddy, 1926, 138, xi pp. Also published in German and French.
- Eddy, Mary Baker, Poetical Works. Boston, Trustees under Will of Mary Baker Eddy, [1936].
- Eddy, Mary Baker, Prose Works other than Science and Health, Boston, Trustees under Will of Mary Baker Eddy, [1925].
- Eddy, Mary Baker, Science and Health with Key to the Scriptures, Boston, Joseph Armstrong, [1875], 734 pp. At present published in English, French, German, and Braille editions.
- Francis, Kenneth, "Churches of Pine Bluff: Their History and Development," Pine Bluff Graphic, Jan. 24, 1940.
- Groves, Miss Echsah, History of Christian Science Society, El Dorado, Arkansas, (original manuscript, part of Minutes of Christian Science Society. See entry 18).
- "History of Church of Christ, Scientist, Rogers, Arkansas." Rogers Daily News, Nov. 3, 1930.
- Johnson, Helen Cooke, Early History of First Church of Christ, Scientists, Fort Smith, Arkansas, (manuscript, written about 1937, located at The Mother Church, Boston).
- Miller, Mrs. Claude, Brief History of the First Church of Christ, Scientist, Fayetteville, Arkansas, (ms.).
- Nowland, Mrs. Mary J., Historical Sketch of First Church of Christ, Scientist, Pine Bluff, Arkansas, (manuscript written May 10, 1940).
- Phillips, Mildred, a Brief History of the Christian Science Movement in Hot Springs, Arkansas, (original manuscript located at The Mother

Church, Boston).

Powell, Gladys, "First Church of Christ, Scientist, to Hold Dedicatory Services Today; First Meeting in City, October 1896," Arkansas Democrat (Little Rock), Mar. 6, 1938.

Powell, Lyman P., Mary Baker Eddy: A Life Size Portrait. New York, Macmillan Co., 1930. 364 pp.

Ramsay, Mary E., Christian Science and Its Discoverer. Boston, The Christian Science Publishing Society, [1936]. 118 pp.

Robinson, Mrs. Anna, (manuscript in possession of Mrs. Nora Mangel).

Robinson, Mrs. Anna, (dedicatory address, Nov. 27, 1924, manuscript copies in possession of Mrs. R. McQuiston and Mrs. Mody Collins).

Stevens, Mildred, A Brief Chronicle of Christian Science Society, Blytheville, Arkansas, (original manuscript written May 1940, part of Ledger of Christian Science Society; see entry 20).

Wilbur, Sibyl, The Life of Mary Baker Eddy. Boston, The Christian Science Publishing Society, [1907]. 406 pp.

CHRONOLOGICAL INDEX

DATE	CHURCH	TOWN	ENTRY	PAGE
1896	(Name Unknown)	Springdale	1	5
1896	First Church of Christ, Scientist	Eureka Springs	2	5
1899	First Church of Christ, Scientist	Fort Smith	3	6
1899	First Church of Christ, Scientist	Little Rock	4	7
1905	Christian Science Society	Mena	5	10
1907	Second Church of Christ, Scientist	Little Rock	6	10
1909	First Church of Christ, Scientist	Fayetteville	7	11
1909	First Church of Christ, Scientist	Pine Bluff	8	11
1909	Christian Science Society	Walnut Ridge	9	13
1910	Christian Science Society	Helena	10	14
1912	Christian Science Society	Siloam Springs	11	14
1912	(Informal Group)	Batesville	23	23
1914	First Church of Christ, Scientist	Monticello	12	16
1915	First Church of Christ, Scientist	Hot Springs	13	16
1917	Christian Science Society	Harrison	14	17
1918	First Church of Christ, Scientist	Texarkana	15	18
1923	First Church of Christ, Scientist	Rogers	16	18
1923	(Informal Group)	Camden	24	23
1924	First Church of Christ, Scientist	Jonesboro	17	19
1925	(Informal Group)	Stuttgart	25	23
1926	Christian Science Society	El Dorado	18	20
1928	Second Church of Christ, Scientist	Little Rock	19	21
1931	(Informal Group)	McGehee	26	24
1933	Christian Science Society	Blytheville	20	21
1936	Christian Science Society	Conway	21	22
1936	Christian Science Society	Arkadelphia	22	22
1938	(Informal Group)	Forrest City	27	24

CHURCH NAME INDEX

CHURCH	TOWN	ENTRY	PAGE
Christian Science Society	Arkadelphia	22	22
Christian Science Society	Blytheville	20	21
Christian Science Society	Conway	21	22
Christian Science Society	El Dorado	18	20
Christian Science Society	Harrison	14	17
Christian Science Society	Helena	10	14
Christian Science Society	Mena	5	10
Christian Science Society	Siloam Springs	11	14
Christian Science Society	Walnut Ridge	9	13
First Church of Christ, Scientist	Eureka Springs	2	5
First Church of Christ, Scientist	Fayetteville	7	11
First Church of Christ, Scientist	Fort Smith	3	6
First Church of Christ, Scientist	Hot Springs	13	16
First Church of Christ, Scientist	Jonesboro	17	19
First Church of Christ, Scientist	Little Rock	4	7
First Church of Christ, Scientist	Monticello	12	16
First Church of Christ, Scientist	Pine Bluff	8	11
First Church of Christ, Scientist	Rogers	16	18
First Church of Christ, Scientist	Texarkana	15	18
(Informal Group)	Batesville	23	23
(Informal Group)	Camden	24	23
(Informal Group)	Forrest City	27	24
(Informal Group)	McGehee	26	24
(Informal Group)	Stuttgart	25	23
(Name Unknown)	Springdale	1	5
Second Church of Christ, Scientist	Little Rock	6	10
Second Church of Christ, Scientist	Little Rock	19	21

PLACE NAME INDEX

TOWN	CHURCH	ENTRY	PAGE
Arkadelphia	Christian Science Society	22	22
Batesville	(Informal Group)	23	23
Blytheville	Christian Science Society	20	21
Camden	(Informal Group)	24	23
Conway	Christian Science Society	21	22
El Dorado	Christian Science Society	18	20
Eureka Springs	First Church of Christ, Scientist	2	5
Fayetteville	First Church of Christ, Scientist	7	11
Forrest City	(Informal Group)	27	24
Fort Smith	First Church of Christ, Scientist	3	6
Harrison	Christian Science Society	14	17
Helena	Christian Science Society	10	14
Hot Springs	First Church of Christ, Scientist	13	16
Jonesboro	First Church of Christ, Scientist	17	19
Little Rock	First Church of Christ, Scientist	4	4
Little Rock	Second Church of Christ, Scientist	6	10
Little Rock	Second Church of Christ, Scientist	19	21
McGehee	(Informal Group)	26	24
Mena	Christian Science Society	5	10
Monticello	First Church of Christ, Scientist	12	16
Pine Bluff	First Church of Christ, Scientist	8	11
Rogers	First Church of Christ, Scientist	16	18
Siloam Springs	Christian Science Society	11	14
Springdale	(Name Unknown)	1	5
Stuttgart	(Informal Group)	25	23
Texarkana	First Church of Christ, Scientist	15	18
Walnut Ridge	Christian Science Society	9	13

GENERAL INDEX

- Aldrich, Miss Lou, pioneer worker at Eureka Springs, 3, 5
- Arkadelphia
church records, 23
services at, 22-23
- Baker, Rev. W. S., First Reader at Rogers, 19
- Batesville
church records, 23
meetings at, 23
- Bentonville, practitioner at, 4
- Berryville, practitioner at, 4
- Bibliography, 27-28
- Blytheville
church records, 22
meetings at, 21
practitioner at, 25
- Bonds, Mrs. Bernice, practitioner at Warren, 4
- Camden, services at, 23
- Carson, Mrs. Charles N., First Reader at Jonesboro, 20
- Christian Science Church, see Church of Christ, Scientist
- Chronological index, 29
- Church of Christ, Scientist
in Arkansas, 2, 3-4
founded at Boston, 1
map of Arkansas churches, vii
practitioners in Arkansas, 25-26
progress of the movement, 2
publications, 2
- Church name index, 30
- Colby, Dr. and Mrs. Frank, pioneer workers at Monticello, 16
- Conway
church records, 22
services at, 22
- Cooley, Mrs. Mayne, practitioner at Jonesboro, 19
- Crittenden County, meetings in, 4
- Crook, Mrs. Minnie G., First Reader at Mena, 10
- Crouch, Sr., Mr. A. L., First Reader at Batesville, 23
- Davis, Mrs. Clara, practitioner at Ft. Smith, 6
- Deane, Mrs. William, Second Reader at Fayetteville, 11
- Dickson, Mrs. Theodora, practitioner at Monticello, 16
- Droke, Mrs. Inez, First Reader at Fayetteville, 11
- Duke, Mrs. Willie, practitioner at Monticello, 16
- Dunn, Mrs. Susan Fussell, pioneer worker at Forrest City, 24
- Earl, meetings at, 4
- Eastman family, the, pioneer workers at Rogers, 18
- Eddy, Mary Baker, work of, 1
- El Dorado
church records, 21
services at, 20
- Eureka Springs, services at, 5
- Evans, Miss Kate, First Reader at Eureka Springs, 5
- Evans, Mrs. Laura E., early practitioner at Eureka Springs, 5
- Fayetteville
church records, 11
practitioner, 25
services at, 11
- Forrest City
church records, 24
services at, 24
- Ft. Smith
church records, 6-7
practitioners, 25
services at, 6
- Gard, Russell, Reader at McGehee, 24
- Gravette, practitioner at, 4
- Groves, Mrs. Echsah, First Reader at El Dorado, 20
- Hamilton, Grace Lou, First Reader at Arkadelphia, 23
- Harrison, services at, 17
- Helena
church records, 14
services at, 14
- Hess, Mr. Homer, First Reader at Conway, 22
- Hewitt, Mrs. H. W., practitioner at Springdale, 5
- Hoover, Mrs. Martha Araminta, pioneer worker at Little Rock, 3, 8

- Hope, meetings at, 4
Hot Springs
 church records, 17
 practitioners, 25
 services at, 16-17
Hotchkiss, Mrs. Isabella, pioneer
 worker at Siloam Springs, 14
- Index
 church name, 30
 chronological, 29
 general, 32-34
 place name, 31
- Jacobs, Annie E., First Reader at
 Hot Springs, 17
Johnson, Mrs. Fidella Vinetta,
 practitioner at Rogers, 19
Johnson, Miss Pressie, pioneer
 worker at Hot Springs, 16-17
Jonesboro
 church records, 20
 services at, 19-20
- Little Rock
 church records, 8-10
 practitioners, 25
 services at, 8, 10-11, 21
Lonoke, meetings at, 4
Luce, Miss Charlotte E., First
 Reader at Ft. Smith, 6
- McCullam, Anna K., First Reader at
 Texarkana, 18
McGaughy, Mrs. Neal, First Reader
 at Pine Bluff, 12
McGehee
 church records, 24
 services at, 24
McIntyre, Mrs. Jennie P., prac-
 titioner at Berryville, 4
Map showing Christian Science
 churches in Arkansas, vii
Marion, meetings at, 4
Maxwell, Mrs. Mary C., Second Read-
 er at Jonesboro, 20
Mena
 church records, 10
 services at, 10
Monticello
 church records, 16
 services at, 16
- Neblett, Mrs. Lillian S., prac-
 titioner at Blytheville, 21, 25
Newman, Mrs. A., pioneer worker at
 Camden, 23
- Oaksmith, Mrs. Ella D.
 First Reader at Stuttgart, 23
 practitioner at Pine Bluff, 25
Osceola, meetings at, 4
- Peay, Mrs. Lessie
 First Reader at Little Rock, 10
 practitioner at Little Rock, 21,
 25
- Phelps, Mr. James D., First Read-
 er at Walnut Ridge, 13
Phillips family, the, early work-
 ers at Hot Springs, 16
Pine Bluff
 church records, 12-13
 practitioners, 25
 services at, 11-12
Place name index, 31
Poe, Mrs. Laura, First Reader at
 Little Rock, 21
Porter, Mrs. Mary, First Reader at
 Harrison, 17
Pratt, Mrs. Elizabeth Hazlett, Sec-
 ond Reader at Siloam Springs, 15
Prettyman, Mrs. Lizzie, pioneer
 worker at Ft. Smith, 3, 6
Purdy, Mrs. Minnie, practitioner
 at Gravette, 4
- Roberts, Mrs. Charlotte, prac-
 titioner at Bentonville, 4
Robinson, Mrs. Anna, pioneer work-
 er and practitioner at Little
 Rock, 3, 8, 10
- Rogers
 church records, 19
 practitioner, 26
 services at, 18-19
- Seward, Mrs. Neti S., First Read-
 er at Siloam Springs, 15
Siloam Springs
 church records, 15-16
 services at, 14-15
Springdale
 practitioner, 26
 services at, 5

Stevens, Mrs. Ida A. R., practitioner at Conway, 22
Stuttgart, services at, 23
Swaty, Mrs. A. V., Second Reader at Mena, 10

Texarkana
church records, 18
services at, 18
Turrell, meetings at, 4

Walnut Ridge
church records, 13

(Walnut Ridge-con't)
services at, 13
Ware, Mrs. Nyna Gould, First Reader at Helena, 14
Warren, practitioner at, 4
Westcott, Mrs. Emma B., practitioner at Hot Springs, 17
Wheeler, George W., instructor at Forrest City, 24
Wilson, Mrs. C. V., church leader at Springdale, 5
Woodall, Miss Neal, practitioner at Pine Bluff, 12
Worthington, Mrs. Jennie, practitioner at Mena, 10

PUBLICATIONS PREPARED BY THE
ARKANSAS HISTORICAL RECORDS SURVEY PROJECT
DIVISION OF COMMUNITY SERVICE PROGRAMS
WORK PROJECTS ADMINISTRATION

- 1) Inventory of the County Archives of Arkansas, No. 12, Cleburne County (Heber Springs). Historical Records Survey, Little Rock, Arkansas, March, 1939. mim. (217pp.)
- 2) Inventory of the County Archives of Arkansas, No. 23, Faulkner County (Conway). Historical Records Survey, Little Rock, Arkansas, December, 1939. mim. (251pp.)
- 3) Inventory of the County Archives of Arkansas, No. 30, Hot Spring County (Malvern). Historical Records Survey, Little Rock, Arkansas, March, 1940. mim. (vii, 121pp.)
- 4) Inventory of the County Archives of Arkansas, No. 65, Searcy County (Marshall). Historical Records Survey, Little Rock, Arkansas, June, 1940. mim. (x, 112pp.)
- 5) Inventory of the County Archives of Arkansas, No. 19, Cross County (Wynne). Historical Records Survey, Little Rock, Arkansas, July, 1940. mim. (xi, 114pp.)
- 6) Inventory of the County Archives of Arkansas, No. 13, Cleveland County (Rison). Historical Records Survey, Little Rock, Arkansas, April, 1941. mim. (xv, 112pp.)

