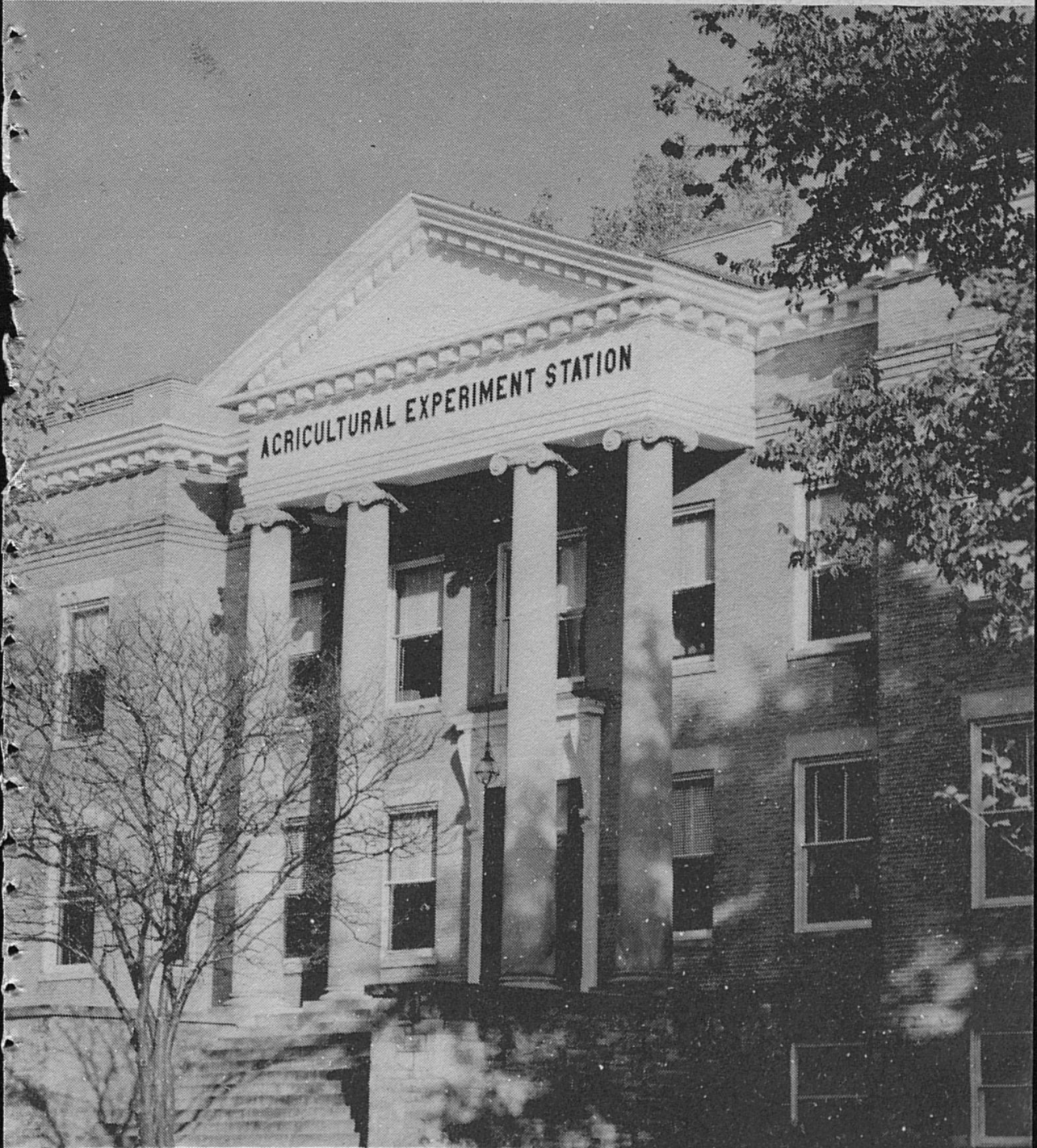


Commercial Feeds in Kentucky – 1974

UNIVERSITY OF KENTUCKY • COLLEGE OF AGRICULTURE
Agricultural Experiment Station • Regulatory Services • Lexington



KENTUCKY COMMERCIAL FEED LAW
DIVISION OF REGULATORY SERVICES
UNIVERSITY OF KENTUCKY
KENTUCKY AGRICULTURAL EXPERIMENT STATION

H. F. Massey, Director
Ed Lindstrom, Assistant Director
Eli Miller, Feed Coordinator
Henry Spencer, Auditor
Wilson Routt, Program Coordinator

LABORATORY

Valva C. Midkiff, Coordinator

Robert L. Beine
Elizabeth Brown
Ellen Denniston
Sue Herald

Norma Holbrook
Robert Kiser
Charles Miller
Robert Price

Allen Thio
Tasanee Thitakamol
David Tompkins

CONTENTS

	Page
Introduction	3
Estimated Tonnage of Feed Distributed in 1974	5
Kentucky Regulatory Inspection Districts	6
Regulatory Inspectors	7
Collective Terms	8
Special Labeling for Medicated Custom Mixed Feeds	12
Feed Registrants as of May 1, 1975	14
Report of Official Feed Samples Analyzed (1974)	23

(Cover Picture) Offices of the Division of Regulatory Services
are in the Experiment Station Building

*The College of Agriculture is an Equal Opportunity Organization authorized to provide
research, educational information and other services only to individuals and institutions
that function without regard to race, color, sex or national origin.*

INTRODUCTION

The Kentucky Commercial Feed Law functions as a consumer protection law for the feed purchaser by insuring compliance with feed labeling and manufacturing standards. The law further creates a strong base for fair and equitable competition among feed manufacturers. Commercial feed, as defined, includes all materials which are offered for sale as feed or for mixing in feed, except unprocessed and unmixed seed and other exempt commodities such as: raw meat, hay, straw, stover, silage, cobs, husks and hulls when unground and not mixed. Presently, 6,120 commercial feeds are registered for distribution or sale by 506 feed companies. Products under the purview of the Kentucky Commercial Feed Law ranges from speciality pet foods to ingredients such as soybean meal.

The primary intent of the law is to insure that commercial feeds are accurately labeled to advise the buyer of the composition of the feed and to provide adequate directions for safe and effective use. The requirement for registration of commercial feeds with the Division of Regulatory Services prior to distribution within the State provides an initial opportunity to review product labeling. During 1974 the labeling of approximately 3,000 commercial feeds was reviewed.

Regulatory inspectors made 5,309 calls on manufacturers and retailers of bagged, bulk and liquid feed. Official samples of 2,491 commercial feeds were collected for laboratory analysis to determine if product guarantees were being met. Laboratory analyses were made for 36 different feed components for a total of 7,810 laboratory determinations. This total includes 2,396 crude protein,

672 urea, 178 fat, 2,025 crude fiber, 487 calcium, 105 phosphorus, 527 salt, 139 invert sugar, 41 trace mineral and 1,040 drug and antibiotic determinations. Of the official samples tested 13% failed to meet one or more guarantees. The comparable figure for 1973 was 13%.

In a cooperative program with The Federal Food and Drug Administration regulatory inspectors performed 256 inspections of feed mills to determine compliance with Good Manufacturing Practice Regulations for medicated feeds. Violations observed during inspection were discussed with management and commitments made for corrective measures. Follow-up reinspections were made to insure compliance. The GMP Regulations require adequate precautions and manufacturing controls be employed to insure that medicated feeds produced are both safe and effective to the consuming animal and the consumer of livestock products. The primary purpose of this program is to help assure that safe and effective medications remain available to the agricultural industry. Kentucky currently has approximately 400 commercial mills which manufacture and custom mix medicated feeds.

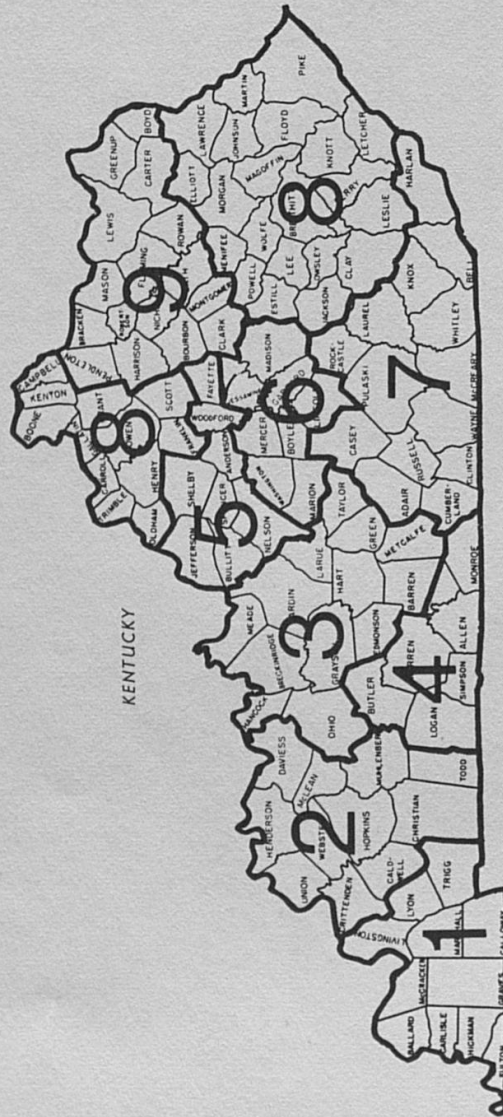
Information presented in this bulletin was compiled from data collected from analysis of official feed samples taken during 1974. This bulletin is intended to provide the feed purchaser with knowledge as to the manufacturing standards maintained by feed manufacturers distributing feed in Kentucky. The intent is not to indicate feed quality but to show the frequency a feed manufacturer failed to meet the guaranteed analysis for one or more feed components.

Table 1. ESTIMATED TONNAGE OF MIXED FEED DISTRIBUTED IN KENTUCKY (1974)

Type	Mixed Feed	
	Complete	Supplement
	(Ton)	
Beef	19,214	32,499
Dairy	184,540	41,674
Swine	67,003	61,052
Poultry		
Chicken Starter-Grower	7,993	1,135
Chicken Layer-Breeder	53,461	3,561
Chicken Broiler	28,438	294
Turkey	416	7
Horse	30,723	
Sheep	97	182
Calf Feed	5,236	
Mineral Supplement		13,527
Pet Foods	41,128	
Miscellaneous	17,213	
Total	455,462	153,931

Table 2. ESTIMATED TONNAGE OF INGREDIENTS DISTRIBUTED IN KENTUCKY (1974)

Ingredient	(Ton)
Alfalfa Products	1,627
Animal Products	3,412
Barley Products	592
Beet Products	56
Brewery Products	958
Corn Products	16,646
Cottonseed Products	5,296
Distillers Products	11,419
Drugs	6
Linseed & Flax Products	186
Milk Products	161
Minerals	3,787
Molasses	12,140
Oat Products	2,956
Rice Products	10
Soybean Products	29,771
Urea	256
Vitamins	658
Wheat Products	12,349
Miscellaneous	6,103
Total	108,389



REGULATORY DISTRICTS

REGULATORY INSPECTORS



Director, Regulatory Services
H. F. Massey
Lexington



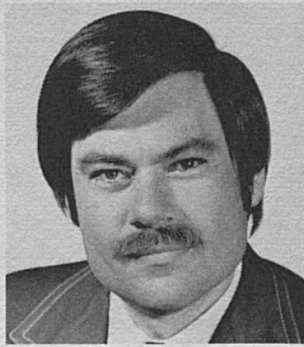
Feed Coordinator
Eli Miller
Lexington



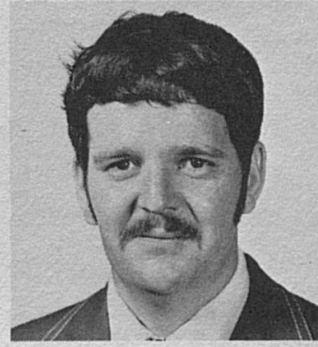
Program Coordinator
Wilson Routt
Nicholasville



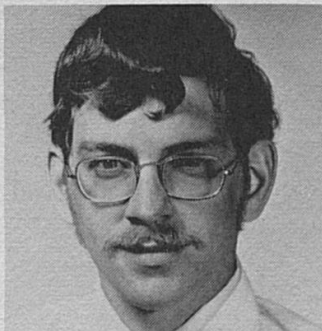
District 1
William Robertson
Murray



District 2
Ellis Hugh Ray
Sacramento



District 3
Noel Johnston
Munfordville



District 4
David Buckingham
Park City



District 5
Ben Cox
Versailles



District 6
Sam Whitehead
Lexington



District 7
Dewey Coffey
Jabez



District 8
Claude Hensley
Stamping Ground



District 9
Wallace King
Lexington

COLLECTIVE TERMS

The use of collective terms, in lieu of actual listing of ingredients, has become an accepted practice for many feed manufacturers. A collective term recognizes a general classification of ingredient origin, which perform a similar function, but does not imply equivalent nutritional values.

The Kentucky Commercial Feed Law provides for the use of collective terms for the grouping of feed ingredients as defined in the Official Definitions of Feed Ingredients published in the Official Publication of the Association of American Feed Control Officials in lieu of listing the individual ingredients: Provided that:

- (i) When a collective term for a group of ingredients is used on the label, individual ingredients within that group shall not be listed on the label.
- (ii) The manufacturer shall provide the Director of Regulatory Services, upon request, with a listing of individual ingredients, within a defined group, that are or have been used at manufacturing facilities distributing in or into the state.

Collective terms are acceptable listing of ingredients on labeling of commercial feed with the exception of pet foods and custom mixed feed.

The 1975 Official Publication of the American Feed Control Officials lists the following ingredients within each collective term:

ANIMAL PROTEIN PRODUCTS

Blood Meal	Whole Dressed Chicken	Condensed Cultured Skimmed Milk
Meat	Fish Meal	Dried Whey
Meat By-Products	Fish Residue Meal	Condensed Whey
Whale Meal	Fish Liver & Glandular Meal	Dried Whey Solubles
Animal Liver Meal	Crab Meal	Condensed Whey Solubles
Hydrolyzed Hair	Shrimp Meal	Dried Hydrolyzed Whey
Hydrolyzed Leather Meal	Condensed Fish Solubles	Condensed Hydrolyzed Whey
Animal Liver & Glandular Meal	Dried Fish Solubles	Condensed Whey-Product
Extracted Animal Liver Meal	Fish Protein Concentrate-Feed Grade	Dried Whey-Product
Poultry By-Product Meal	Dried Buttermilk, Feed Grade	Condensed Cultured Whey
Poultry Hatchery By-Product	Condensed Buttermilk	Casein
Dried Meat Solubles	Dried Skimmed Milk, Feed Grade	Cheese Rind
Poultry Parts	Condensed Skimmed Milk	Dried Milk Albumin
Poultry By-Products	Dried Cultured Skimmed Milk	Dried Whole Milk, Feed Grade
Hydrolyzed Poultry Feathers		Dried Milk Protein
Fleshings Hydrolysate		Dried Hydrolyzed Casein

FORAGE PRODUCTS

Suncured Alfalfa Meal or	Ground Peanut Vines
Ground Alfalfa Hay	Suncured Alfalfa Meal or
Dehydrated Alfalfa Meal	Ground Alfalfa Hay
Alfalfa Leaf Meal	Ground Soybean Hay
Dehydrated Alfalfa Meal,	Alfalfa Stem Meal
Solvent Extracted	Lespedeza Stem Meal
Flax Plant Product	Ground Peanut Stems

GRAIN PRODUCTS

Barley	Mixed Feed Oats
Ground Grain Sorghum	Ground Rough Rice or
Rolled Grain Sorghums	Ground Paddy Rice
Corn Feed Meal	Ground Brown Rice
Ground Corn	Rye
Cracked Corn	Wheat

PLANT PROTEIN PRODUCTS

Algae Meal	Kibbled Soybean Meal
Coconut Meal, Mechanical	Sunflower Meal, Mechanical Ex-
Extracted	tracted
Coconut Meal, Solvent Ex-	Sunflower Meal, Dehulled,
tracted	Solvent Extracted
Cottonseed Meal, Mechanical	Sunflower Meal, Dehulled,
Extracted	Mechanical Extracted
Cottonseed Meal, Solvent Ex-	Sunflower Meal, Solvent
tracted	Extracted
Cottonseed Cake, Mechanical	Primary Dried Yeast or
Extracted	Dried Yeast
Cottonseed Flakes, Mechanical	Active Dry Yeast
Extracted	Brewers Dried Yeast
Cottonseed Flakes, Solvent Ex-	Grain Distillers Dried
tracted	Yeast
Whole-Pressed Cottonseed,	Molasses Distillers Dried
Mechanical Extracted	Yeast
Low Gossypol Cottonseed Meal,	Torula Dried Yeast
Mechanical Extracted	Yeast Culture

PROCESSED GRAIN BY-PRODUCTS

Corn Bran	Corn Flour	Corn Gluten Meal
Peanut Skins	Soy Grits or Soy Flour	Grain Sorghum Grits
Rice Bran	Wheat Feed Flour or Wheat Flour	Corn Grits
Wheat Bran	Grain Sorghum Germ Cake or Grain Sorghum Germ Meal	Soy Grits or Soy Flour
Brewers Dried Grains	Corn Germ Meal (Dry Milled)	Oat Groats
Distillers Dried Grains	Corn Germ Meal (Wet Milled)	Hominy Feed
Distillers Dried Grains with Solubles	Wheat Germ Meal	Solvent Extracted Hominy Feed
Molasses Distillers Dried Solubles	Defatted Wheat Germ Meal	Malt Sprouts
Molasses Distillers Condensed Solubles	Grain Sorghum Gluten Feed	Buckwheat Middlings
Distillers Dried Solubles	Corn Gluten Feed	Rye Middlings
Condensed Distillers Solubles	Grain Sorghum Gluten Meal	Wheat Middlings
Gelatinized Sorghum Grain Flour		Pearl Barley By-Product
Partially Aspirated Gelatinized Sorghum Grain Flour		Rice Polishings
		Wheat Shorts
		Wheat Red Dog
		Wheat Mill Run

ROUGHAGE PRODUCTS

Corn Cob Fractions	Oat Mill By-Products	Dried Citrus Pulp
Ground Corn Cob	Peanut Hulls	Dried Citrus Meal
Barley Hulls	Rice Hulls	Citrus Seed Meal, Mechanical Extracted
Barley Mill By-Product	Rice Mill By-Product	Dried Apple Pomace
Malt Hulls	Rye Mill Run	Dried Apple Pectin Pulp
Cottonseed Hulls	Soybean Hulls	Dried Beet Pulp
Ground Almond Hulls	Soybean Mill Feed	Dried Tomato Pomace
Buckwheat Hulls	Soybean Mill Run	Flax Straw By-Product
Sunflower Hulls	Husks	Ground Straw
Oat Hulls		

SPECIAL LABELING FOR MEDICATED CUSTOM MIXED FEED

Manufacturers of drug premixes must include adequate directions on the label to enable the custom mixer to use their products at levels which are safe and effective for their intended purpose. Without this information the custom mixer could not determine the correct amount of premix to use in a batch of feed. Likewise, the livestock producer needs drug information for safe and effective use of medicated feeds. Improperly used medicated feeds may result in tissue residues in the consuming animal at slaughter time. Therefore, it is extremely important that your customers be advised of proper drug usage by providing complete drug information. The Kentucky Commercial Feed Law and Good Manufacturing Practice Regulations requires the custom mixer to furnish the following general information to accompany each delivery of custom mixed medicated feed:

1. Name and address of mixer.
2. Name and address of purchaser.
3. Date of sale or delivery.
4. The product name and brand name, if any, plus the level(s) of the drug(s) and the number of pounds of each registered commercial feed used in the mixture and the name and number of pounds of each other feed ingredient added.
5. The name and potency of drug(s) or premix.
6. When drug-containing premixes, concentrates, or feed rations are used in the customer-formula mix, the invoice, must in addition, state the following information: (a) concentration of the active drug ingredient in the final complete mix,

(b) the purpose for adding the active drug ingredient(s), (c) specific warning, precaution, or discontinuance statements as required for the drug(s) indicated, and (d) feeding directions to insure safe and effective use of the feed for its intended purpose.

The additional labeling required to advise the livestock producer for safe and effective use of medicated custom mixed feed may be provided on a supplemental tag attached to the custom mix invoice.

Example of Supplementary Tag:

<u>Custom Mixed Hog Grower Ration</u>	
Purpose:	For control of swine dysentery
Active drug ingredient:	Arsanilic Acid 0.025%
Feeding Directions:	Feed for 5 to 6 days
WARNING:	Withdraw 5 days before slaughter. Use as sole source of organic arsenic.



FEED REGISTRANTS AS OF MAY 1, 1975

ACME-EVANS COMPANY, INC.	902 W WASHINGTON	INDIANAPOLIS IN	46204
ADE MFG & CHEMICAL COMPANY		TISKILWA IL	61368
A & G NAT'L DISTRIBUTORS	6 MONROE	CLAYTON NM	88415
AG. SERVICES, INC.	R #13, BOX 61	BOWLING GREEN KY	42101
A-L FARM SERVICE	R. 3	LAWRENCEBURG KY	40342
A-1 ANIMAL RANCH INC	P O BOX 528	KERNERSVILLE NC	27284
ALBANY MILLS		ALBANY KY	42602
ALBERS MILLING COMPANY	5045 WILSHIRE BLVD	LOS ANGELES CA	90036
ALEXS AGRI-SUPPLY CO	1021-1023 STORY AVE	LOUISVILLE KY	40206
ALLEN CTY SEED SERVICE	SOUTH 4TH STREET	SCOTTSVILLE KY	42164
ALLEN PRODUCTS COMPANY, INC.	P. O. BOX 2187 RD 3	ALLENTOWN PA	18104
ALLIED CHEMICAL CORP.	2580 S. 90TH STREET	OMAHA NB	68124
ALLIED CHEMICAL CORP	P O BOX 2120	HOUSTON TX	76101
ALLIED CHEMICAL CORPORATION	NITROGEN DIVISION	HOPEWELL VA	23860
ALLIED FOODS INC	1450 HILLS PLACE N	WATLANTA GA	30318
ALLIED MILLS, INC.	P. O. BOX 459	LIBERTYVILLE IL	60048
ALVER BROTHERS COMPANY	P. O. BOX 25	MILFORD IL	60953
W. S. AMBURGY & SONS		BOONEVILLE KY	41314
AMENDT MILLING CO	317 WEST FRONT ST	MONROE MI	48161
AMERICAN CRYSTAL SUGAR CO.	P. O. BOX 2586	FARGO ND	58102
AMERICAN CYANAMID COMPANY	P. O. BOX 400	PRINCETON NJ	08540
AMERICAN PET FOOD CO	P O BOX 7604-A	BIRMINGHAM AL	35223
AMERICAN RICE GROWERS COOP ASN	424 PUJO STREET	LAKE CHARLES LA	70601
AMORY COTTON OIL CO., INC.	P. O. BOX 30	AMORY MS	38821
ANDERSON, CLAYTON & CO.	P. O. BOX 2988	PHOENIX AZ	85062
ANDERSON FARM SERVICE		LAWRENCEBURG KY	40342
ANDERSON & SPILMAN	P. O. BOX 265	DANVILLE KY	40422
ANHEUSER-BUSCH, INC.	721 PESTALOZZI ST.	ST. LOUIS MO	63118
ANIMAL NUTRITION	6608 W MAIN ST	BELLVILLE IL	62223
ANVIL MINERAL PRODUCTS CORP.	BOX Q	BAY SPRINGS MS	39422
AQUARIUM SUPPLY CO DIV STERNCO	600 SO 4TH ST	HARRISON NJ	07029
ARCHER DANIELS MIDLAND CO	P O BOX 1470	DECATUR IL	62525
ARIZONA FEEDS	P O BOX 3054	TUSCON AZ	85702
ARMOUR & CO.	P. O. BOX 1108	LOUISVILLE KY	40201
ARMOUR-DIAL	GREYHOUND TOWER	PHOENIX AZ	85077
ASHLAND MILLING CO, INC	900 FRONT ST	ASHLAND KY	41101
ASTOR PRODUCTS	BOX 2366	JACKSONVILLE FL	32203
AUBREY FEED MILLS, INC	932 E CHESTNUT ST	LOUISVILLE KY	40204
AYLOR & MEYER COMPANY	3RD & EXPORTING ST.	AURORA IN	47001
BAGDAD ROLLER MILLS		BAGDAD KY	40003
BARTON BRANDS, LTD.	PO BOX 220 BARTON RD	BARDSTOWN KY	40004
BRAZEN OF MINN.	P. O. BOX 1123	MINNEAPOLIS MN	55440
BAY STATE MILLING COMPANY	P O BOX 108	LEAVENWORTH KS	66048
BAY STATE MILLING COMPANY	FRANKLIN ST.	WINONA MN	55987
JAMES B BEAM DISTILLING CO		CLERMONT KY	40110
BEECHMAN, INC.	65 INDUSTRIAL DR.	CLIFTON NJ	07012
BEST FEEDS & FARM SUPPLIES	BOX J	OAKDALE PA	15071
BI-COUNTY FARM BUREAU CO-OP.	BOX 8273	FLORENCE KY	41042
BIG FOUR FEED & IMPLEMENT CO.	P. O. BOX 453	SCOTTSVILLE KY	42164
BIO ZYME ENTERPRISES	232 PACKERS AVE	ST JOSEPH MO	64504
BIRMINGHAM MILLING COMPANY	ROUTE 7	BENTON KY	42025
BLENDA LIFE, INC.		GREEN ISLE MN	55338
BLUE BARN DOG FOOD CO.	W 10TH & FLOYD STS.	NEW ALBANY IN	47150
BOONE CTY FARM SUPPLY		WALTON KY	41094
BOONES FEED STORE		STANFORD KY	40484
BURDEN CHEMICAL COMPANY	P. O. BOX 419	NORFOLK VA	23501
BOSWELL COMPANY	BOX 11696	ATLANTA GA	30305
BOW WOW COMPANY, INC.	P. O. BOX 938	ROLLA MO	65401
BREMCO MILLS	P.O. BOX 96	NEW BREMEN OH	45869
BROWN-FORMAN DISTILLERS CORP.	P. O. BOX 1080	LOUISVILLE KY	40201
BROWN MOLASSES CO.	P. O. BOX 96	BREMEN IN	46506
OTIS BRYANT & SON MILLING		CANEYVILLE KY	42721
BUCKEYE CELLULOSE CORP.	P. O. BOX 599	CINCINNATI OH	45201
BUCKEYE CELLULOSE CORP.	2782 CHELSEA	MEMPHIS TN	38108
BUHLER MILLS, INC.	125 SO. MAIN ST.	BUHLER KS	67522
BUHLER MILLS INC	1835 UNION AVE	MEMPHIS TN	38104

FEED REGISTRANTS AS OF MAY 1, 1975

BURKHART FEED MILL	CALDWELL ST.	AUBURN	KY	42206
BURROWS FEED MILL		PENDLETON	KY	40055
BUSH BROTHERS & COMPANY		CLINTON	TN	37716
A.C. BUTTS & SONS	P. O. BOX 98	FULTON	KY	42041
C & M MARKETING CO	8711 MEADOWDALE	DETROIT	MI	48228
CPC INTERNATIONAL INC	INTERNATIONAL PLAZA	ENGLEWOOD CLFNJ		07632
CADIZ MILLING COMPANY		CADIZ	KY	42211
CALLOWAY CTY SOIL IMP. ASSN		MURRAY	KY	42071
CAMPBELLSVILLE MILLING COMPANY	P. O. BOX 176	CAMPBELLSVILLE	KY	42718
CANEYVILLE ROLLER MILL CO.		CANEYVILLE	KY	42721
CARGILL, INCORPORATED.	1200 CARGILL BLDG	MINNEAPOLIS	MN	55402
CARGILL NUTRENA FEED DIVISION	200 CARGILL BLDG	MINNEAPOLIS	MN	55402
CARROLL CTY FARM BUREAU COOP.	BOX 187	CARROLLTON	KY	41008
CARNATION CO.	5045 WILSHIRE BLVD	LOS ANGELES	CA	90036
CENTRAL SOYA	1300FT. WAYNE NAT. BKF	FT. WAYNE	IN	46802
CENTRAL SOYA OF CLINTON, INC.	BOX 158	CLINTON	KY	42031
CENTRAL SOYA CO OF LOUISVILLE	BOX 21376	LOUISVILLE	KY	40221
CERULEAN FEED MILLS		CERULEAN	KY	42215
CHAMPION VALLEY FARMS	375 MEMORIAL AVE	CAMDEN	NJ	08101
CHEMAGRO CORPORATION	P. O. BOX 4913	KANSAS CITY	MO	64120
CLARKSON FEED STORE		CLARKSON	KY	42726
CLINTON CORN PROCESSING CO.	BOX 340	CLINTON	IA	52732
COMMERCIAL SOLVENTS CORP	1331 SOUTH FIRST ST	TERRE HAUTE	IN	47808
COMMUNITY MILLING COMPANY		IRVINGTON	KY	40146
COMMUNITY FEED MILL		BELTON	KY	42324
CUN AGRA	KIEWIT PLAZA	OMAHA	NB	68131
CONAGRA-ILLINOIS INC	P O BOX 369	CHESTER	IL	62233
CONSOLIDATED MILLS INC.	BOX 6	BLISSFIELD	MI	49228
COOK INDUSTRIES	P O BOX 249	MARKS	MS	38646
COOPERATIVE MILLS, INC.	BOX 15013 LOCKLAND	CINCINNATI	OH	45215
COSBY-HODGES MILLING CO	P O BOX 10767	BIRMINGHAM	AL	35202
GEORGE COUCH & SONS		NEW HARMONY	IN	47631
CRAFT FEED & GRAIN	ROUTE 2	CATLETTSBURG	KY	41129
CRAFTON-DUNCAN, INC.	1228 SECOND ST.	HENDERSON	KY	42420
CRESCENT ROLLER MILLS		TAYLORSVILLE	KY	40071
CUMBERLAND MILLING COMPANY	P.O. BOX 967	CLARKSVILLE	TN	37041
CUSTOM FEED MILLS	P.O. BOX 95	MORGANFIELD	KY	42437
DAHLGREN DIV OF BEATRICE FOODS	220 SUNFLOWER ST	CROOKSTON	MN	56716
DAIRYMEN, INC.	P. O. BOX 110	BOWLING GREEN	KY	42101
DARLING & CO-C M WINCHELL	4650 S RACINE AVE	CHICAGO	IL	60609
DARLING AND COMPANY	LOCKLAND STATION	CINCINNATI	OH	45215
DAWES LABORATORIES, INC.	450 STATE STREET	CHICAGO HTS	IL	60411
DEARBORN MILLS	116 BRIDGEWAY ST.	AURORA	IN	47001
DELTA OIL MILL INC.	P.O. BOX 138	JONESTOWN	MS	38639
DELTA PET PRODUCTS	600 SO 4TH ST	HARRISON	NJ	07029
DIAGNOSTIC DATA, INC	518 LOGUE AVE	MT VIEW	CA	94040
DIAMOND CRYSTAL SALT COMPANY	916 RIVERSIDE AVE.	ST. CLAIR	MI	48079
DIAMOND LABORATORIES	BOX 863	DES MOINES	IA	50304
DIAMOND SHAMROCK CHEMICAL CO.	60 PARK PLACE	NEWARK	NJ	07101
DIAMOND V MILLS INC.	436 G AVE NW	CEDAR RAPIDS	IA	52407
DIXIE MILLS COMPANY	10TH & WALNUT ST.	E. ST. LOUIS	IL	62202
DIXIE PORTLAND FLOUR MILLS	P. O. BOX 1259	CHATTANOOGA	TN	37401
DIXIE PORTLAND FLOUR MILLS	P. O. BOX 3623	MEMPHIS	TN	38101
DOANE PRODUCTS COMPANY	P.O. BOX 879	JOPLIN	MO	64801
THE DOW CHEMICAL COMPANY	2030 ABBOTT RD CENTE	MIDLAND	MI	48640
DUNCAN-MCFARLAND FARM SERVICE		LAWRENCEBURG	KY	40342
EAGLE PRODUCTS, INC.	1121 W. 11TH STREET	MISHAWAKA	IN	46544
F. L. EMMERT COMPANY, INC.	2007 DUNLAP STREET	CINCINNATI	OH	45214
ENKAY INC	6005 MARTWAY SU 104	ASHAWNEE MISS	KS	66201
JOHN W. ESHELMAN & SONS	5045 WILSHIRE BLVD.	LOS ANGELES	CA	90036
ELANCO PROD CO DIV-ELI LILLY	P O BOX 1750	INDIANAPOLIS	IN	46206
EVANS MILLING COMPANY	P. O. BOX 474	INDIANAPOLIS	IN	46206
JOHN EWING COMPANY	P. O. BOX 188	LA SALLE	CO	80645
FMC CORPORATION	633 THIRD AVENUE	NEW YORK	NY	10017
FALSTAFF BREWING CORP.	5050 OAKLAND AVE.	ST. LOUIS	MO	63110
FARM SERVICE CENTER, INC.	RFD #3	BEAVER DAM	KY	42320

FEED REGISTRANTS AS OF MAY 1, 1975

FAR-MAR-CO, INC.	960 N. HALSTEAD	HUTCHINSON	KS	67501
FARMERS ELEVATOR OF MERCER CO	318 MARIMON	HARRODSBURG	KY	40330
FARMERS FEED MILL	738 PRICE AVENUE	LEXINGTON	KY	40508
FARMERS FRIEND MINERAL CO.	651 FILMORE ST	NAPOLEON	OH	43545
FARMERS & GINNERS COTT OIL MILP	P O BOX 10551	BIRMINGHAM	AL	35202
FARMERS MILLING COMPANY	COLUMBIA STREET	SOMERSET	KY	42501
FARMERS SUPPLY		BEAVER DAM	KY	42320
FARMERS SUPPLY COMPANY	BALLARD ST.	SPRINGFIELD	KY	40069
FARMERS SUPPLY & PRODUCE CO.	P. O. BOX 433	MONTICELLO	KY	42633
FARMINGTON SWEET FEED MILL	BOX 38	FARMINGTON	KY	42040
FARMLAND INDUSTRIES, INC.	3315 N OAK TRAFFICWAY	KANSAS CITY	MO	64116
FARNAM COMPANIES INC	2230 E MAGNOLIA	PHOENIX	AZ	85036
J. H. FEDDERS, INC.	16TH & RUSSELL STS.	COVINGTON	KY	41014
FEDDERS FEED SERVICE	R. 1	OWENTON	KY	40359
FEDERATED FOODS INC	2250 EAST DEVON AVE	DES PLAINES	IL	60018
FIELD PACKING COMPANY, INC.	P. O. BOX 617	OWENSBORO	KY	42301
FISCHER PACKING COMPANY	1860 MELLWOOD AVE.	LOUISVILLE	KY	40201
FLEISCHMANN DISTILLING CORP	P O BOX 1248	OWENSBORO	KY	42301
FLEMING LABORATORIES, INC	P O BOX 10372	CHARLOTTE	NC	28201
FOLSOMDALE MILLING COMPANY	ROUTE 2	BOAZ	KY	42027
FOREMOST FOODS PROD-IND FOOD	ONE POST STREET	SAN FRANCISCO	CA	94104
FOSTER CANNING, INC.	STAR ROUTE 108	NAPOLEON	OH	43545
R. T. FRENCH MANUFACTURES	96 MUSTARD ST.	RACHESTER	NY	14609
FRITZ PET PRODUCTS	500 SAM HOUSTON	MESQUITE	TX	75149
FROSTY MORN MEATS	P. O. BOX 1048	CLARKSVILLE	TN	37041
HENRY FRUECHTENICHT CO., INC.	165 N. CLAY	LOUISVILLE	KY	40202
FRUEN MILLING COMPANY	GLENWOOD THOMAS AVE	MINNEAPOLIS	MN	55403
FUHRER-FORD MILL COMPANY, INC	P. O. BOX 567	MT. VERNON	IN	47620
GALLATIN COUNTY FARM SUPPLY		WARSAW	KY	41095
GALLIA ROLLER MILLS	93 GRAPE ST	GALLIPOLIS	OH	45631
GAMALIEL FEED & FARM SUPPLY	BOX 125	GAMALIEL	KY	42140
GARRARD MILLS	P. O. BOX 570	LANCASTER	KY	40444
J. I. GATES MILLING COMPANY	1137 W. BROAD ST.	COLUMBUS	OH	43223
GENERAL FOODS CORP GAINES PROF	SERVICES DEPT	WHITE PLAINS	NY	10602
GENERAL MILLS INC	P O BOX 1113	MINNEAPOLIS	MN	55440
GENERAL PACKING COMPANY	BOX 305	WAYNESVILLE	OH	45068
GERMANTOWN MILLING COMPANY		GERMANTOWN	KY	41044
GLENMORE DISTILLERIES CO.		OWENSBORO	KY	42301
GODBOLD INC	P O BOX 229	LUBBOCK	TX	79408
GOLD SEAL PRODUCTS COMPANY	2700 FIRST AVE. N.	BIRMINGHAM	AL	35203
GOLDENROD OIL MEAL SALES CO.	P. O. BOX 152	MEMPHIS	TN	38101
GOLDEN GEM GROWERS INC		UMATILLA	FL	32784
GOOCH FEED MILL COMPANY	6TH & SOUTH STS.	LINCOLN	NB	68501
GOOD-LIFE CHEMICALS, INC.	BOX 687	EFFINGHAM	IL	62401
W R GRACE & COMPANY	8400 MARYLAND	ST LOUIS	MO	63105
GRAIN PROCESSING CORPORATION	1600 OREGON STREET	MUSCATINE	IA	52761
GRANT COUNTY FARM SUPPLY	BROADWAY	DRY RIDGE	KY	41035
JERRY GRAVEN CATTLE & FD SER	ROUTE #2	GLASGOW	KY	42141
GRAYSON MILLING COMPANY		GRAYSON	KY	41143
GREAT A & P-(HI-LIFE)	8 SO. MICHIGAN AVE.	CHICAGO	IL	60603
THE GREAT A & P TEA CO INC	500 ANN PAGE RD	HORSEHEADS	NY	14845
GREAT LAKES PET FOOD COMPANY	P. O. BOX 4006	HAMMOND	IN	43625
GREENVILLE FEED & GRAIN	ROUTE #1	GREENVILLE	KY	42345
GRIFFIN INDUSTRIES, INC.	ROUTE 2	BUTLER	KY	41006
GRO-KOTE INC	551 SEBASTOPOL RD	SANTA ROSA	CA	95402
GUTHRIE FEED MILL		GUTHRIE	KY	42234
HAM HILL FARM	ROUTE 2 BOX 17	COXS CREEK	KY	40013
HARDIN AGRI SERVICES INC	ROUTE 2	CECILIA	KY	42724
HARDIN COUNTY MILLING COMPANY	RT. 2 BOX 517	ELIZABETHTOWN	KY	42701
HARDY BROTHERS MILLS	92-94 N. MAIN ST.	WALTON	KY	41094
HARDY SALT COMPANY	800 S. VANDEVENTER	AST. LOUIS	MO	63110
HARPETH MILLS	615 MULBERRY STREET	NASHVILLE	TN	37203
HARTZ MOUNTAIN PRODUCTS	700 SO 4TH ST	HARRISON	NJ	07029
HARVEST BRAND, INC.	P. O. BOX 46	PITTSBURG	KS	66762
HAYDEN FARM SUPPLY	BOX 183	BARDWELL	KY	42023
HAYDON MILL & GRAIN COMPANY	400 W. MAIN ST.	SPRINGFIELD	KY	40069
HAYNES MILLING CO., INC.	215 E. VOTAW STREET	PORTLAND	IN	47371

FEED REGISTRANTS AS OF MAY 1, 1975

HEAVEN HILL DISTILLERIES	P O BOX 280	BARDSTOWN	KY	40004
HEILEMAN-GEO WIEDEMANN BREW	601 COLUMBIA ST	NEWPORT	KY	41072
DR. HEINZ CO.	BOX 250	WASHINGTON CHOH		43160
DR. HEINZ CO., INC.	P. O. BOX 158	BLOOMINGBURG OH		43106
HELENA COTTON OIL COMPANY	P O BOX 569	HELENA	AR	72342
HENRY COUNTY FEEDERS SUPPLY		EMINENCE	KY	40019
BURCH HESTER FEED STORE	P O BOX 96	HUSTONVILLE	KY	40437
HI-VI DOG FOOD CO.	BOX 128	RUSH SPRINGS OK		73082
HILLS DIV RIVIANA FOODS INC	401 HARRISON	TOPEKA	KS	66601
FRANK HINTON & SON		PLUMMERS LANDKY		41089
HOBBS FEED AND SUPPLY	P. O. BOX 48	FANCY FARM	KY	42039
HOFFMAN TAFF, INC.	P. O. BOX 2	W. ALEXANDRIA OH		45381
HGME MILLING CO.		GREENVILLE	KY	42345
HONEGGERS & CO. INC.	201 W. LOCUST	FAIRBURY	IL	61739
HOPKINSVILLE MILLING CO.	2001 S. WALNUT ST.	HOPKINSVILLE	KY	42240
HUBINGER COMPANY		KEOKUK	IA	52632
HUDSONS FARM SERVICE	200 WITT RD	FRANKLIN	KY	42134
HUFF & PUFF PET FOODS, INC.	DIV OF TC SLAUGHTER	REEDVILLE	VA	22539
THE HYLAND COMPANY	2212 CARTER AVE.	ASHLAND	KY	41101
IAMS FOOD COMPANY	3622 DELPHOS AVE	DAYTON	OH	45417
IGLEHEART OPERAT KOOL-AID DIV	1600-1ST AVENUE	EVANSVILLE	IN	47707
ILLINOIS CEREAL MILLS, INC.	BOX 220	PARIS	IL	61944
IM-PRUV-ALL AGR. INC	P. O. BOX 1782	CARSON CITY	NV	89701
INDEPENDENT MILLS INC	SUITE 333 4800 MAIN	KANSAS CITY MO		64112
INDIANA FARM BUREAU COOP ASSN	47 S PENNSYLVANIA ST	INDIANAPOLIS IN		46204
INDUSTRIAL MOLASSES CORP.	321 FORT LEE RD.	LEONIA	NJ	07605
INDUSTRIAL MOLASSES	6600 FRANCE AVE. S.	MINNEAPOLIS MN		55435
INTERNATIONAL MIN & CHEM CORP	IMC PLAZA	LIBERTYVILLE IL		60048
INTL MULTIFOODS-MILLFEED DEPT	1200 MULTIFOODS BLDG	MINNEAPOLIS MN		55402
INTERNATIONAL SALT CO., INC.		CLARKS SUMMITPA		18411
JEWELL COMPANY	5725 E. RIVER RD.	CHICAGO	IL	60631
THE JIM DANDY COMPANY	P O BOX 10687	BIRMINGHAM	AL	35201
JUBILEE PROD.-(KROGER)	1014 VINE STREET	CINCINNATI	OH	45202
K & K MANUFACTURING INC.		ROGERS	MN	55374
E. KAHNS SONS COMPANY	3241 SPRING GROVE	CINCINNATI	OH	45225
KAL KAN FOODS INC	3386 E 44TH ST	VERNON	CA	90058
KALER MILLING COMPANY	ROUTE 1	SYMSONIA	KY	42082
KECO MILLING COMPANY	P. O. BOX 30	MCKENZIE	TN	38201
KELLER HAY & GRAIN COMPANY	P. O. BOX 3	NEWPORT	KY	41072
KELLY BROTHERS		CLAY	KY	42404
KENNETT OIL MILL INC		KENNETT	MO	63857
KENTUCKY BY-PRODUCTS CORP.	2928 GARLAND AVENUE	LOUISVILLE	KY	40211
KENTUCKY CHEMICAL INDUSTRIES	BOX 32099	CINCINNATI	OH	45232
KEYNES BROTHERS	P. O. BOX 628	LOGAN	OH	43138
KIMBELL-DURANT COMPANY	P O BOX 511	FORT WORTH	TX	76101
KINGSTON FARMERS EXCHANGE INC.	P. O. BOX 205	KINGSTON	OH	45644
KNAUF & TESCH COMPANY	E GRAND STREET	CHILTON	WI	53014
ED G KOEHL INC	10 E VINE STREET	READING	OH	45215
KORDON CORPORATION	21393 CURTIS ST.	HAYWOOD	CA	94545
KRAFT FOODS	BOX 1163	CHICAGO	IL	60690
KRAUSE MILLING CO.	P. O. BOX 1155	MILWAUKEE	WI	53202
KROGER CO. (HI-LIFE)	8 SO. MICHIGAN AVE	CHICAGO	IL	60603
LA CROSSE MILLING COMPANY	P. O. BOX J	COCHPANE	WI	54622
LAND O LAKES INC	FEED DIV HEADQUARTER	FORT DODGE	IA	50501
LANDMARK, INC	245 NO HIGH ST	COLUMBUS	OH	43216
LANDON COMPANY, INC	RT 3 BOX 457	DELAVAN	WI	53115
LAUHOFF GRAIN COMPANY	P. O. BOX 571	DANVILLE	IL	61832
LEWIS FOODS	NAT PET FD BOX 788	LONG BEACH	CA	90805
LEWISBURG ROLLER MILLS	BOX 365	LEWISBURG	KY	42256
LILLY BROTHERS SEED COMPANY	SKYLINE DRIVE	HOPKINSVILLE	KY	42240
LIPSCOMB GRAIN & SEED	PO BOX 1125 SS STA	SPRINGFIELD MO		65805
LIPTON PET FOODS	800 SYLVAN AVENUE	ENGLEWD CLFS	NJ	07632
LIV-A-SNAPS, INC.	4251 FERNWOOD	ST. PAUL	MN	55112
LONCALA PHOSPHATE COMPANY	P. O. BOX 776	HIGH SPRINGS	FL	32643
LONGLIFE AQUARIUM PRODUCTS	600 SO 4TH ST	HARRISON	NJ	07029
LURETTO FEED & FERTILIZER		LORFTTO	KY	40037

FEED REGISTRANTS AS OF MAY 1, 1975

LOUISA SUPPLY COMPANY, INC.	PIKE STREET	LOUISA	KY	41230
LOWES FEED & HATCHERY	617 CLAY STREET	BOWLING GREEN	KY	42101
LOWES PELLETS & GRAIN INC.	RR 4	GREENSBURG	IN	47240
LUTTRELL MINING CO.	BOX 12009	KNOXVILLE	TN	37912
M.F.A. GRAIN DIVISION	BOX 39	MEXICO	MO	65265
M & W MILLING COMPANY INC	301 HUDSON STREET	COLUMBIA	KY	42728
MARKSBERRY FEED DAIRY SUPPLY	RT 2	PHILPOT	KY	42366
MARTINS FEED MILL	BOX 46	NEW PARIS	IN	46553
MARTIN SALES COMPANY	2630 EVERGREEN RD.	TOLEDO	OH	43606
MASONITE CORPORATION	29 N. WACKER DRIVE	CHICAGO	IL	60606
MAVAR SHRIMP & OYSTER CO.	P. O. BOX 487	BILOXI	MS	39530
MAVERICK INDUSTRIES INC	P O BOX 187	SALIDA	CO	81201
MAYES-HELM & COYLE		PERRYVILLE	KY	40468
MAYFIELD SWEET FEED MILL	P. O. BOX 451	MAYFIELD	KY	42066
MCCAULEY BROTHERS SEED CO INC	111 BROADWAY	VERSAILLES	KY	40383
J A MCDONALD & SONS INC	MCKINNEY AT DEPOT	ROGERSVILLE	TN	37857
MCGAHAN & COMPANY	P. O. BOX 176	PAINTSVILLE	KY	41240
MC INNIS COMPANY	P. O. BOX 312	PULASKI	TN	38478
MCREDMOND BROTHERS	P. O. BOX 7116	NASHVILLE	TN	37210
MEDLEY DISTILLING COMPANY	BOX 548	OWENSBORO	KY	42301
MENNEL MILLING COMPANY	P O BOX 806	FOSTORIA	OH	44830
METAFRAME CORPORATION	41 SLATER DRIVE	EAST PATERSON	NJ	07407
METZGER BROTHERS	1000 FLOURNEY ST.	PADUCAH	KY	42001
MICHIGAN SALT CO.	500 N. BANKSON	ST. LOUIS	MI	48880
MICRO-LITE, INC	1100 S. KATY-BOX 368	CHANUTE	KS	66720
MID-SOUTH FEEDS	P. O. BOX 90125	NASHVILLE	TN	37209
MIDSTATE MILLS INC	EAST A STREET	NEWTON	NC	28658
S. E. MIGHTON COMPANY	150 NORTHFIELD ROAD	BEDFORD	OH	44014
MILK SPECIALTIES CO DIV CUDAHY	P O BOX 278	DUNDEE	IL	60118
MINTER CITY OIL MILL		MINTER CITY	MS	38944
MISSISSIPPI CHEMICAL CORP.	P. O. BOX 388	YAZOO CITY	MS	39194
MISSISSIPPI COTTON SEED PRODS.	P O BOX 370	GRENADA	MS	38901
MOHAWK MILLING COMPANY	BOX 509	NEWPORT	TN	37821
AUGUST MOLDENHAUER MILL		MENFRO	MO	63765
MONARCH FEED MILL	200 CLEMENTS	DEXTER	MO	63841
MONARCH MILLING COMPANY	101 S MAYSVILLE ST.	MT. STERLING	KY	40353
MONROE BROS. SWEET FEED MILL		CAVE CITY	KY	42127
MOORMAN MANUFACTURING COMPANY		QUINCY	IL	62301
MORGAN PACKING COMPANY, INC.		AUSTIN	IN	47102
MORGANTOWN FEED MILL		MORGANTOWN	KY	42261
MOR-MILK CO.	517 N. JEFFERSON	DIXON	IL	61021
JOHN MORRELL & COMPANY	208 S. LASALLE ST.	CHICAGO	IL	60604
MORTON SALT COMPANY	110 N. WACKER DRIVE	CHICAGO	IL	60606
MOTHERS COOKIE CO.	2287 RALPH AVE.	LOUISVILLE	KY	40216
MOWAT, WILSON & COMPANY	BOX 5171, 7 OAKS ST	DETROIT	MI	48235
MULLICAN FEED MILL, INC	P O BOX 68	STANLEY	KY	42375
MUNFORDVILLE MILLING COMPANY		MUNFORDVILLE	KY	42765
MUSIC CITY SUPPLEMENT CO	155 1ST AVE SOUTH	NASHVILLE	TN	37202
MURPHY PRODUCTS CORP.	124 S. DODGE	BURLINGTON	WI	53105
MUTUAL PRODUCTS COMPANY	509 N. FOURTH ST.	MINNEAPOLIS	MN	55401
NA-CHURS PLANT FOOD CO	421 MONROE ST	MARION	OH	43302
HENRY NAGEL & SON	2641 SPRING GROVE	CINCINNATI	OH	45214
NASHVILLE OIL MILL CORP	P. O. BOX 730	NASHVILLE	TN	37202
NATIONAL ALFALFA DEHY & MILL	4800 MAIN STREET	KANSAS CITY	MO	64112
NABISCO INC	425 PARK AVENUE	NEW YORK	NY	10022
NABISCO INC	PO BOX 2208 CEN STA	TOLEDO	OH	43603
NATIONAL MOLASSES CO	BLAIR MILL ROAD	WILLOW GROVE	PA	19090
NATIONAL OATS COMPANY	1515 H. AVE NORTH E.	CEDAR RAPIDS	IA	52402
NATIONAL PACKING COMPANY	P. O. BOX 157	GREENVILLE	MS	38701
NATL PET FOODS CORP.	6700 CHERRY AVE	LONG BEACH	CA	90805
NATIONAL STARCH & CHEM. CORP.	P. O. BOX 1299	INDIANAPOLIS	IN	46221
NEW ENGLAND FISH CO.	PIER 89	SEATTLE	WA	98119
NICHOLAS CO. FEEDERS SUPPLY	BOX 207	CARLISLE	KY	40311
NIPAK INC.	301 S. HARWOOD ST.	DALLAS	TX	75201
NORTHERN OHIO SUGAR COMPANY	1530 SIXTEENTH ST	DENVER	CO	80202
NORWICH AGRI. PROD-DIV/MORTON	17 EATON AVE	NORWICH	NY	13815

FEED REGISTRANTS AS OF MAY 1, 1975

NUNN MILLING COMPANY INC	P O BOX 6047	EVANSVILLE	IN	47712
OCEAN LABS. INC.	5800 PERKINS RD	OXNARD	CA	93030
OCCIDENTAL CHEMICAL COMPANY	P. O. BOX 1185	HOUSTON	TX	77001
OHIO BLENDERS, INC.	2404 SUMMIT ST.	TOLEDO	OH	43611
ODON MILLING CO. INC.		ODON	IN	47562
OLD STANLEY DISTILLERY, INC.	BOX 67	STANLEY	KY	42375
OLIN CORP.-AGRI. DIV.	P. O. BOX 991	LITTLE ROCK	AR	72203
ORLEANS PACKING-(HI-LIFE)	18 SO. MICHIGAN AVE.	CHICAGO	IL	60603
ORRICK DEHYDRATING CO INC		ORRICK	MO	64077
OSCEOLA PRODUCTS COMPANY	P. O. BOX 217	OSCEOLA	AR	72370
OWENSBORO GRAIN COMPANY, INC.	P. O. BOX 1117	OWENSBORO	KY	42301
OWENSBORO MILLING COMPANY	1440 W. 7TH ST.	OWENSBORO	KY	42301
OYSTER SHELL PROD DIV RADCLIFF	BOX 1225	MOBILE	AL	36601
PACIFIC MOLASSES COMPANY	P O BOX 3952	SAN FRANCISCO	CA	94119
PACKMASTER, INC.	P O BOX 8938	CINCINNATI	OH	45208
PAN AMERICAN MILLS	1239 ADAMS ST.	BOWLING GREEN	KY	42101
PATOKA VALLEY FEED CORP	RURAL ROUTE	JASPER	IN	47546
PEAVEY COMPANY FLOUR MILLS	730 SECOND AVE SO	MINNEAPOLIS	MN	55402
PEETS FEEDS INC	BOX 369 33 SO 25 ST	COUNCIL BLUFF	IA	51501
PENICK & FORD LIMITED	P O BOX 428	CEDAR RAPIDS	IA	52406
PENN FEED CO.	617 BIZZELL DR	LEXINGTON	KY	40508
PERK FOODS CO., DIV. VETS	500 N. DEARBORN ST.	CHICAGO	IL	60610
PFIZER INC	235 EAST 42ND STREET	NEW YORK	NY	10017
P. ROXANE DIV THOMPSON HAYWARD	5200 SPEAKER RD.	KANSAS CITY	KS	66110
PIERCE & WILLIAMS	BOX 359	HOPKINSVILLE	KY	42240
PILLSBURY COMPANY	1072 PILLSBURY BLDG	MINNEAPOLIS	MN	55402
PIONEER FARM SERVICE	2012 GRIMES AVE.	OWENSBORO	KY	42301
PIONEER FOOD INDUSTRIES INC	P O BOX 231	DE WITT	AR	72042
PLANTERS MANUFACTURING COMPANY	P.O. BOX 10	CLARKSDALE	MS	38614
PLANTERS OIL MILL	P.O. BOX 38	TUNICA	MS	38676
PREFERRED PRODUCTS INC	101 JEFFERSON AVE S	HOPKINS	MN	55343
PRINCETON MILLS	210 E. MAIN STREET	PRINCETON	KY	42445
PROVICO FEEDS & CONCENTRATES	% BOTKINS GRAIN	BOTKINS	OH	45306
PROVIMI INC	99 BARTLEY ROAD	FLANDERS	NJ	07836
QUAKER OATS COMPANY	345 MOSE MART PL	CHICAGO	IL	60654
QUINCY SOYBEAN CO.	1900 S. FRONT ST.	QUINCY	IL	62301
RACHELLE LABORATORIES INC	700 HENRY FORD B2029	LONG BEACH	CA	90801
RAGLAND MILLS INC	R 2 BOX 55A	NEOSHO	MO	64850
C B RAGLAND CO	BOX 8597	NASHVILLE	TN	37211
RALCO PRODUCTS, INC.	1600 HAHN RD.	MARSHALL	MN	56258
RALSTON PURINA COMPANY	835 S. 8TH STREET	ST. LOUIS	MO	63199
REELFOOT ALFALFA MILL	HWY 78	TIPTONVILLE	TN	38079
REELFOOT PACKING COMPANY	REELFOOT AVENUE	UNION CITY	TN	38261
REICHERT GRAIN CO.	600 S. FIRST ST.	BELLEVILLE	IL	62220
RICELAND FOODS	P O BOX 927	STUTTGART	AR	72160
RICO LIQUIDS, INC.	BOX 423	ALICEVILLE	AL	35442
RICO SALES CORP	P O BOX 423	ALICEVILLE	AL	35442
RIO GRANDE OIL MILL INC	P O BOX 351	HARLINGEN	TX	78550
RISNERS FEED & HARDWARE	MAIN STREET	BIG CLIFTY	KY	42712
RIVAL PET FOODS	7830 W 71ST STREET	BRIDGEVIEW	IL	60455
RIVIANA FOODS, INC.	P.O. BOX 278	ABBEVILLE	LA	70510
ROBBINS BROS AUBURN ROLL MILLS	BOX 37	AUBURN	KY	42206
ROBERTSON CORPORATION	P. O. BOX 128	SEYMOUR	IN	47274
ALLEN ROBERTSON & CO	335 BAXTER AVE.	LOUISVILLE	KY	40204
ROBINSON MILLING COMPANY	125 MONTICELLO ST.	SOMERSET	KY	42501
ROCHE CHEMICAL DIVISION	HOFFMAN-LAROCHE INC.	NUTLEY	NJ	07110
G P ROSE	P O BOX 11057	NASHVILLE	TN	37211
RUMINANT NITROGEN PROD CO	BOX 206 110 RUBY ST	ADRIAN	MI	49221
RUSSELL SPRINGS MILLING CO.		RUSSELL SPRGS	KY	42642
SANDUSKY MILL	365 E. OFFICE ST.	HARRODSBURG	KY	40330
CHARLES H. SCHENCK & SONS	R. R. 4	VINCENNES	IN	47591
JOHN SCHLEMMER	307-319 N. STATE ST.	HARRISON	OH	45030
SCHENLEY DISTILLERS	P. O. BOX 169	FRANKFORT	KY	40601
SCHENLEY DISTILLERS, INC.	888 SEVENTH AVE	NEW YORK	NY	10019
SCIOTO FARM BUREAU CO-OP ASSN	BOX 705	LUCASVILLE	OH	45648
SCOTTS AUBURN MILLS INC	P O BOX 218	AUBURN	KY	42206
SCOTT COUNTY MILLING COMPANY	P. O. BOX 340	SIKESTON	MO	63801

FEED REGISTRANTS AS OF MAY 1, 1975

SEA-BORN CORP		WINTER HAVEN FL	33880
JOSEPH A SEAGRAM & SONS	P O BOX 189	LAWRENCEBURG IN	47025
SEABOARD ALLIED MILLING CORP.	P O BOX 19148	KANSAS CITY MO	64141
SEACOAST PRODUCTS INC	#1 CAPE HENLOPEN DR	LEWES DE	19958
SEBREE FEED & GRAIN CO		SEBREE KY	42455
SENTINEL INDUSTRIES, INC	P O BOX 247	ST. BONIFACIUM MN	55375
SHELL CHEM. CO.	2401 CROW CANYON RD.	SAN RAMON CA	94583
J. R. SHORT MILLING CO.	WALNUT & WATER	MT. VERNON IN	47620
SIEMER MILLING COMPANY		TEUTOPOLIS IL	62467
SIKESTON COTTON OIL MILL	P O BOX 430	SIKESTON MO	63801
SMITHFIELD MILLING COMPANY		SMITHFIELD KY	40068
SMITH SWEET FEED MILL	P O BOX 446	BOWLING GREEN KY	42101
SNYDER MOLASSES COMPANY	1791 W. HOWARD ST.	CHICAGO IL	60626
SOUTHERN COTTON OIL CO., INC.	P O BOX Q-MPD	HUNTSVILLE AL	35804
SOUTHERN COTTON OIL CO., INC.	P O BOX 24219	NEW ORLEANS LA	70124
SOUTHERN COTTON OIL CO., INC.	815 NELSON	GREENVILLE MS	38701
SOUTHERN COTTON OIL CO., INC.	BOX 100-1351 WILLIAMS	MEMPHIS TN	38101
SU. STATES BARDSTOWN COOP	403 CATHEDRAL MANOR	BARDSTOWN KY	40004
SO STATES CAMPBELLSVILLE COOP	P O BOX 428	CAMPBELLSVILLE KY	42718
SO. STATES HARDIN COOP	RFD 2	ELIZABETHTOWN KY	42701
SO. STATES HOPKINSVILLE COOP.	501 E. 13TH ST.	HOPKINSVILLE KY	42240
SO STATES LEBANON COOP	215 DEPOT STREET	LEBANON KY	40033
SO. STATES LEITCHFIELD COOP	P O BOX 366	LEITCHFIELD KY	42754
SO. STATES LONDON COOP	P O BOX 604	LONDON KY	40741
S S OWENTON COOP	BOX 97	OWENTON KY	40359
SO. STATES SOMERSET COOP	BOX 500	SOMERSET KY	42501
SO. STATES COOPERATIVE	7TH & MAIN STREETS	RICHMOND VA	23213
WOODFORD SPEARS & SONS	P.O. BOX 143	PARIS KY	40361
SPECIALTY FEEDS INC.	STAR ROUTE BOX 28	SOUTHAVEN MS	38671
SPENCER FARM SERVICE	SO. STATES AGENCY	TAYLORSVILLE KY	40071
SPENCER KELLOGG	120 DELAWARE AVE.	BUFFALO NY	14240
SPHAR & COMPANY	523-527 OAK STREET	MT. CARMEL IL	62863
SQUARE DEAL FORTIFICATION	BOX 377	KOUTS IN	46347
A. E. STALEY MANUFACTURING CO	2200 E. ELUDORADO	DECATUR IL	62525
STAMM, INC	BOX 254	OWINGS MILL MD	21117
STANDARD BRANDS, INC.	625 MADISON AVE.	NEW YORK NY	10022
STAR-KIST FOODS, INC.	582 TUNA STREET	TERMINAL IS. CA	90730
W. S. AMBURGY & SONS		BOONEVILLE KY	41314
STRONGHEART PRODUCTS COMPANY	P. O. BOX 2009	KANSAS CITY KS	66110
STURGIS MILLING COMPANY	P. O. BOX 131	STURGIS KY	42459
SUCREST CORP	120 WALL STREET	NEW YORK NY	10005
SUMMER SHADE ROLLER MILL		SUMMER SHADE KY	42166
SUNSHINE FEED MILLS INC	P O DRAWER S	RED BAY AL	35582
SUNSHINE MILLS INC	BOX 1483	TUPELO MS	38801
SUNSHINE MOLASSES COMPANY		SOMERSET KY	42501
SUPER-MOL, HUGHES FEED-GRAIN	RT 3 BOX 498	TAMPA FL	33619
SUPREME MILLS	BOX 377	GLASGOW KY	42141
D. B. SUTHERLAND & SONS		BLOOMFIELD KY	40008
SWIFT EDIBLE OIL COMPANY	PO BOX 68	CHAMPAIGN IL	61820
SWIFT & CO ANIMAL PROTEIN PL	1551 ALLEN LANE	EVANSVILLE IN	47710
T & H FEED SERVICE		LEBANON KY	40033
TATECO MILLS INC	P O BOX 664	SENATOBIA MS	38668
TAYLOR COUNTY FEED CO.	612 E. FIRST STREET	CAMPBELLSVILLE KY	42718
TEATER & CASSITY	309 N. 3RD STREET	NICHOLASVILLE KY	40356
TENNESSEE FARMERS COOPERATIVE		LA VERGNE TN	37086
TENN VALLEY COTTON OIL MILL	P O BOX 1648	DECATUR AL	35601
THOMAS THOMAS & HAROLD THOMAS	ROUTE 4	MORGANFIELD KY	42437
THOMPSON HAYWARD CHEMICAL CO	P O BOX 2383	KANSAS CITY KS	66110
THOMPSON AND NASH INC.	602 HENRY CLAY ST.	SHELBYVILLE KY	40065
THOMPSON & SHEARER FARM SUPPLY	BOX 551	NICHOLASVILLE KY	40356
THOROBRED COMPANY, INC.	P. O. BOX 313	WAYNESVILLE OH	45068
THURMONDS COAL & FEED CO		MURRAY KY	42071
TRACTOR SUPPLY CO., INC	4747N. RAVENSWD. AVE	CHICAGO IL	60604
TRI-ASSOCIATES, INC.	8500 PILLSBURG AVE	MINNEAPOLIS MN	55403
TRI-COUNTY FARM SUPPLY	P.O. BOX 445	CORBIN KY	40701
TRIMBLE COOPERATIVE, INC.		MILTON KY	40045

FEED REGISTRANTS AS OF MAY 1, 1975

TRIPLE F FEEDS	PO BX 3600 URBANDALE	EDES MOINES	IA	50322
TRIPLE T GRAIN & FERTILIZER	ROUTE 1	VINCENNES	IN	47591
ULTRA-LIFE LABORATORIES, INC.	NO. 1 ULTRA WAY DR.	HIGHLAND	IL	62249
UNION COUNTY GRAIN COMPANY	600 KELSEY STREET	STURGIS	KY	42459
UNITED STATES SUGAR CORP.	P. O. DRAWER 1207	CLEWISTON	FL	33440
URBANA MILLS CO	P O BOX 312	URBANA	OH	43078
USS AGRI CHEMICALS	BOX 90446	NASHVILLE	TN	37209
VIGORTONE PRODUCTS CO	931 BLAIRS FERRY RD	CEDAR RAPIDS	IA	52406
VISTRON CORP AG SERVICES	P O BOX 628	LIMA	OH	45802
VITA KELP DIV	3401 HIAWATHA AVE S	MINNEAPOLIS	MN	55406
VIT-A-WAY, INC.	BOX 4311	FORT WORTH	TX	76106
VITA-MOOR SUPPLIES	RT 1	MONTGOMERY	IN	47501
VITAMINERAL PRODUCTS COMPANY	1520 N E ADAMS ST.	PEORIA	IL	61603
V M S INC	P O BOX 406	MONTGOMERY	AL	36101
VYLACTOS LABORATORIES INC	PO BOX 178	SYRACUSE	IN	46567
VYLACTOS LABORATORIES, INC.	1901 E. EUCLID AVE.	DES MOINES	IA	50313
WAGNER-INDOE INC	1223 BEN FULTON AVE	N LAWRENCE	OH	44666
WALNUT GROVE PRODUCTS	2ND & LINN ST	ATLANTIC	IA	50022
WARDLEY PRODUCTS CO.	1 AQLARIUM DR.	SECAWCUS	NJ	07094
WATKINS PRODUCTS CO., INC.	150 LIBERTY STREET	WINONA	MN	55987
WATKINS PRODUCTS CO., INC.	BOX 2447	MEMPHIS	TN	38102
WEISENBERGERS MILLS	BOX 215	MIDWAY	KY	40347
WELL DIV. NATIONAL PACKING CO.	617 SO. D. ST.	MONMOUTH	IL	61462
WESTGATE-CALIFORNIA FOODS INC	1995 BAY FRONT	SAN DIEGO	CA	92112
WEST TENNESSEE SOYA MILL, INC.	HIGHWAY 78	TIPTONVILLE	TN	38257
WESTERN ALFALFA CORP	BOX 69	SHAWNEE MISSNKS	IA	66201
N. B. WHEELER & SON		SEDALIA	KY	42079
MARTHA WHITE FOODS, INC.	BOX 58	NASHVILLE	TN	37202
WHITMOYER LAB., INC.	19 N. RAILROAD ST.	MYERSTOWN	PA	17067
R. L. WILES FEED MILLS INC.	900 3RD AVE NO.	NASHVILLE	TN	37210
WILSON & CO.	4545 N. LINCOLN BLVD	DOKLA. CITY	OK	73105
WILSON ENTERPRISES INC	P O BOX 386	COLONIAL HTS	VA	23834
WINN MILLING COMPANY	208 E. COLUMBIA AVE.	GREENSBURG	KY	42743
WOODFORD FEED COMPANY	LEXINGTON ROAD	VERSAILLES	KY	40383
YAZOO VALLEY OIL MILL, INC.	P O BOX 1320	GREENWOOD	MS	38930
YOUNG JOHN F COMPANY	3914 MIAMI RD	CINCINNATI	OH	45227
Y-V MINERALS, INC	R.R. 6, BOX 167	GREENWOOD	IN	46142
ZAPATA HAYNIE CORP.	5010 YORK RD.	BALTIMORE	MD	21212
ZEMACO ANIMAL HEALTH	ST. RT. 503, BOX 56	LEWISBURG	OH	45338
ZINPRO CORP.	464 2ND ST.	EXCELSION	MN	55331

KENTUCKY REGULATORY BULLETIN 219
REPORT OF OFFICIAL FEED SAMPLES ANALYZED - - - 1974

MANUFACTURER, ADDRESS AND BRAND	GUARANTEED	FOUND
Albers Milling Co., Los Angeles, CA 90036		
Total Samples Analyzed	1	
Total Violative Samples	0	
Allied Mills, Libertyville, IL 60048		
Total Samples Analyzed	166	
Total Violative Samples	16	
Wayne Pig Balancer (400) Med. M-57	Chlortetracycline G/T 148.0	45.0
	Penicillin G/T 37.5	16.2
	Arsanilic Acid % 0.045	0.024
	N.P.N. % 20.0	23.0
Wayne 42% Dari-Blen	Chlortetracycline G/lb 1.25	0.53
Waynexta for Swine Formula #2 Med.	Salt, Max., % 3.50	6.14
	Crude Protein % 42.0	47.9
Wayne 32% Super Cattle Balancer	Carbadox % 0.006	0.0017
Wayne 42% Dari-Blen	Carbadox % 0.006	0.0030
Wayne Tail Curler Senior Med. M-D6	Penicillin G/T 50.0	24.9
Wayne Tail Curler Senior Med. M-D6	Crude Protein % 16.0	21.8
Wayne Gro Pig Grower Med. M-65	Crude Protein % 16.0	22.3
Waynexta for Swine Formula #1 Med.	Penicillin G/T 350.0	120.0
Waynexta for Swine Formula #1 Med.	Streptomycin G/T 75.0	0.0
Wayne Pig Balancer Med. M-56	Penicillin G/T 37.5	16.4
Wayne Pig Balancer (400) Med. M-57	Chlortetracycline G/T 20.0	5.6
Wayne Calf Krunch Med. M-27	Chlortetracycline G/T 20.0	5.5
Wayne Calf Krunch Med. M-27	Chlortetracycline G/T 20.0	6.0
Wayne Calf Grower Krunch Med. M-27	N.P.N. % 12.5	14.7
Wayne 32% Pro Sweet Topper		
W. S. Amburgy & Sons, Booneville, KY 41314		
Total Samples Analyzed	2	
Total Violative Samples	1	
Amburgys Super A Porkmaker Pellets	Crude Fat % 5.0	1.7
American Cyanamid Co., Princeton, NJ 08540		
Total Samples Analyzed	10	
Total Violative Samples	1	
Aureo S 700 Crumbles Med.	Chlortetracycline G/lb 2.0	3.2
Andrews Mills, Russellville, KY 42276		
Total Samples Analyzed	1	
Total Violative Samples	0	
Anderson Farm Service, Lawrenceburg, KY 40342		
Total Samples Analyzed	2	
Total Violative Samples	1	
Anderson Co. 16% Dairy Feed	Crude Protein % 16.0	13.8

REPORT OF OFFICIAL FEED SAMPLES ANALYZED - - - 1974

MANUFACTURER, ADDRESS AND BRAND	GUARANTEED	FOUND
Anderson & Spilman, Danville, KY 40422		
Total Samples Analyzed	3	
Total Violative Samples	2	
Dependable 20% Egg Pellets	Crude Protein % 20.0	16.6
Dependable 20% Egg Pellets	Crude Protein % 20.0	16.6
Ashland Milling Co., Ashland, KY 41101		
Total Samples Analyzed	4	
Total Violative Samples	2	
E & E 16% Dairy Feed	Crude Protein % 16.0	10.8
MI Choice 16% Dairy Feed	N.P.N. % 5.0	7.9
Aubrey Feed Mill, Louisville, KY 40204		
Total Samples Analyzed	175	
Total Violative Samples	13	
Red A 50% Cattle Supplement	Crude Protein % 50.0	59.6
Garden 16% Dairy Feed	Crude Fiber % 15.0	18.3
Red A 44% Dairy Supplement	Crude Protein % 44.0	41.8
Red A 44% Dairy Supplement	Crude Protein % 44.0	41.6
Red A 16% Sow & Pig Feed Med.	Hygromycin B G/T 12.0	0.0
Red A 35% Sow & Pig Supplement Med.	Chlortetracycline G/T 50.0	17.0
Red A 40% Hog Supplement Meal	Crude Protein % 40.0	37.1
Red A 40% Hog Supplement Meal	Crude Protein % 40.0	37.6
Red A 40% Hog Supplement Meal	Crude Protein % 40.0	37.4
Red A 40% Hog Supplement Pellets	Crude Protein % 40.0	36.4
Red A Calf Starter-Grower	Crude Protein % 18.5	16.2
Red A 30% Game Bird Starter Crumbles Med.	Crude Protein % 30.0	14.1
Red A Mix Mo-Lass	Crude Fiber % 15.0	17.9
Bagdad Roller Mills, Bagdad, KY 40003		
Total Samples Analyzed	7	
Total Violative Samples	0	
Bi-Co. Farm Bureau Co-op., Florence, KY 41042		
Total Samples Analyzed	2	
Total Violative Samples	0	
Bio Zyme Enterprises, St. Joseph, MO 64504		
Total Samples Analyzed	1	
Total Violative Samples	0	
Blue Barn Dog Food, New Albany, IN 47150		
Total Samples Analyzed	3	
Total Violative Samples	0	
Boones Feed Store, Stanford, KY 40484		
Total Samples Analyzed	2	
Total Violative Samples	0	

REPORT OF OFFICIAL FEED SAMPLES ANALYZED . . . 1974

MANUFACTURER, ADDRESS AND BRAND	GUARANTEED	FOUND
Otis Bryant & Son, Caneyville, KY 42721		
Total Samples Analyzed 19		
Total Violative Samples 2		
Gold Medal 16% Pig Starter Med.	Sulfamethazine % 0.011	0.016
	Chlortetracycline G/T 100.0	167.1
Gold Medal 16% Pig Starter Med.	Crude Protein % 16.0	13.7
A.C. Butts & Sons, Fulton, KY 42041		
Total Samples Analyzed 2		
Total Violative Samples 0		
Cadiz Milling Co., Cadiz, KY 42211		
Total Samples Analyzed 5		
Total Violative Samples 0		
Campbellsville Milling Co., Campbellsville, KY 42718		
Total Samples Analyzed 1		
Total Violative Samples 0		
Caneyville Roller Mill, Caneyville, KY 42721		
Total Samples Analyzed 23		
Total Violative Samples 2		
KY Farm 12% Hog Finisher Med.	Arsanilic Acid % 0.010	0.0023
KY Farm 20% Pig & Sow Ration Med.	Crude Protein % 20.0	17.2
Cargill Nutrena Feed Div., Minn., MN 55402		
Total Samples Analyzed 19		
Total Violative Samples 3		
Nutrena Sweetflow - 41 Dairy Conc.	Crude Protein % 41.0	35.5
Nutrena Sweetflow 44% Conc.	Crude Protein % 44.0	38.8
Nutrena Hog Prime-X HP	Crude Protein % 34.0	31.7
Carroll Co. Farm Bureau Coop., Carrollton, KY 41008		
Total Samples Analyzed 1		
Total Violative Samples 0		
Center Farm Supply, Center, KY 42214		
Total Samples Analyzed 2		
Total Violative Samples 0		
Central Soya, Ft. Wayne, IN 46802		
Total Samples Analyzed 223		
Total Violative Samples 22		
Master Mix 14% Hog Developer 816-99Q Med.	Arsanilic Acid % 0.010	0.005

REPORT OF OFFICIAL FEED SAMPLES ANALYZED - - - 1974

MANUFACTURER, ADDRESS AND BRAND	GUARANTEED	FOUND
Master Mix Gro-Ets 810A-82A Med.	Penicillin G/T 50.0	24.9
Master Mix Hog Master-40	Sulfamethazine % 0.011	0.007
Gilt Edge 37% Cattle Supplement Block	Crude Protein % 40.0	37.5
Master Mix Econo Lay Conc. 252	Salt, Max. % 9.6	12.5
Master Mix Gro-Getter Conc. 767	Crude Protein % 33.0	39.2
Master Mix Bloom N Gain Conc. 765	Crude Protein % 40.0	37.3
Master Mix 16% Milk Getter 643	Crude Protein % 40.0	37.0
Master Mix 50% Milk Master 675	Magnesium % 0.3	1.4
Master Mix 50% Milk Master 675	Crude Protein % 50.0	46.7
Master Mix 50% Milk Master 675	Crude Protein % 50.0	47.9
Master Mix 50% Milk Master 675	Crude Protein % 50.0	46.8
Master Mix 38% Milk Master Conc. 671	Crude Protein % 38.0	35.5
Master Mix Gro-Ets 810-60A Med.	Carbadox % 0.0055	0.0027
Master Mix Gro-Ets 810-82A Med.	Chlortetracycline G/T 100.0	42.9
	Penicillin G/T 50.0	21.0
	Sulfamethazine % 0.011	0.006
Master Mix Pig-Ets 809-82A Med.	Penicillin G/T 50.0	21.4
Master Mix Pig-Ets 809-82A Med.	Penicillin G/T 50.0	22.3
	Chlortetracycline G/T 100.0	45.6
Master Mix Sow Aid 829-82A Med.	Penicillin G/T 50.0	16.3
	Chlortetracycline G/T 100.0	37.0
	Sulfamethazine % 0.011	0.006
Master Mix 42% Pig Master Conc. 862-99C Med.	Streptomycin G/T 75.0	27.4
Master Mix Special 40% Hog 875	Crude Protein % 40.0	37.3
Master Mix Bio-Pac-10,000 8884-82H Med.	Chlortetracycline G/lb 2.0	0.3
	Penicillin G/lb 1.0	0.3
Master Mix Calf Grower 540 Med.	Chlortetracycline G/T 25.0	0.0
44% Solvent Extracted Soybean Meal	Crude Protein % 44.0	38.0
	Crude Fiber % 7.0	10.4
Central Soya Co., Louisville, KY 40221		
Total Samples Analyzed 1		
Total Violative Samples 0		
Chemagro Corp., Kansas City, MO 64120		
Total Samples Analyzed 1		
Total Violative Samples 1		
Chemagro Baymix Crumbles	Crude Protein % 7.0	16.5
ConAgra, Omaha, NB 68131		
Total Samples Analyzed 4		
Total Violative Samples 0		
Consolidated Mills, Blissfield, MI 49228		
Total Samples Analyzed 1		
Total Violative Samples 0		
Cook Industries, Marks, MS 38646		
Total Samples Analyzed 4		
Total Violative Samples 0		

REPORT OF OFFICIAL FEED SAMPLES ANALYZED - - - 1974

MANUFACTURER, ADDRESS AND BRAND	GUARANTEED	FOUND
Cooperative Mills, Cincinnati, OH 45215		
Total Samples Analyzed	2	
Total Violative Samples	0	
Craft Feed & Grain, Catlettsburg, KY 41129		
Total Samples Analyzed	7	
Total Violative Samples	3	
Easy-Flo 14% Swine Finisher Med.	Crude Protein % 14.0	11.0
	Penicillin G/T 2.5	0.0
	Arsanilic Acid % 0.01	0.0
Easy-Flo 16% Swine Grower Med.	Arsanilic Acid % 0.010	0.016
Easy-Flo 14% Swine Finisher	Penicillin G/T 2.5	1.1
	Bacitracin G/T 7.5	0.0
Crescent Roller Mills, Taylorsville, KY 40071		
Total Samples Analyzed	3	
Total Violative Samples	0	
Custom Feed Mills, Morganfield, KY 42437		
Total Samples Analyzed	17	
Total Violative Samples	0	
Dearborn Mills, Aurora, IN 47001		
Total Samples Analyzed	1	
Total Violative Samples	0	
Dixie Mills, E. St. Louis, IL 62202		
Total Samples Analyzed	3	
Total Violative Samples	1	
Dixie 42% Dairy Mixer Med.	Crude Protein % 42.0	39.3
Doane Products Co., Joplin, MO 64801		
Total Samples Analyzed	2	
Total Violative Samples	0	
Duncan-McFarland Farm Service, Lawrenceburg, KY 40342		
Total Samples Analyzed	4	
Total Violative Samples	2	
Check-R-Mix Laying Mash	Crude Protein % 18.0	14.3
16% Dairy Feed	Crude Protein % 16.0	13.1
Elanco Products, Indianapolis, IN 46206		
Total Samples Analyzed	1	
Total Violative Samples	0	
F.L. Emmert Co., Cincinnati, OH 45214		
Total Samples Analyzed	2	
Total Violative Samples	1	
B G Y 19	Crude Protein % 19.0	27.4

REPORT OF OFFICIAL FEED SAMPLES ANALYZED - - - 1974

MANUFACTURER, ADDRESS AND BRAND	GUARANTEED	FOUND
John W. Eshelman & Sons, Los Angeles, CA 90036		
Total Samples Analyzed	1	
Total Violative Samples	0	
Falstaff Brewing Corp., St. Louis, MO 63110		
Total Samples Analyzed	2	
Total Violative Samples	0	
Famous Feed Mills, Nashville, TN 37201		
Total Samples Analyzed	4	
Total Violative Samples	0	
Farm Service Center, Beaver Dam, KY 42320		
Total Samples Analyzed	5	
Total Violative Samples	0	
Farmers Elevator of Mercer County, Harrods- burg, KY 40330		
Total Samples Analyzed	2	
Total Violative Samples	0	
Farmers Friend Mineral, Napoleon, OH 43545		
Total Samples Analyzed	7	
Total Violative Samples	4	
Farmers Friend Dried Molasses	Crude Protein % 10.0	6.6
Farmers Friend Dried Molasses	Invert Sugar % 45.0	40.4
Farmers Friend 40% Cattle Supplement	Crude Protein % 40.0	27.9
	Magnesium % 1.25	1.81
Farmers Friend Dried Molasses	Crude Protein % 10.0	6.9
Farmers Supply Co., Springfield, KY 40069		
Total Samples Analyzed	2	
Total Violative Samples	0	
Farmland Industries, Kansas City, MO 64116		
Total Samples Analyzed	11	
Total Violative Samples	2	
Coop. Hog Conc.-40 (G) Med.	Crude Protein % 40.0	36.2
Coop. Mor-Mlass 85% Equiv. Cane Molasses	Invert Sugar % 42.0	36.5
Fischer Packing Co., Louisville, KY 40201		
Total Samples Analyzed	2	
Total Violative Samples	0	
Henry Fruechtenicht Co., Louisville, KY 40202		
Total Samples Analyzed	88	
Total Violative Samples	14	
Producer 50% Cattle Conc.	Crude Protein % 50.0	45.2
Producer 50% Cattle Conc.	Crude Protein % 50.0	44.6
Producer 44% Dairy Conc.	Crude Protein % 44.0	38.3
Producer 44% Dairy Conc.	Crude Protein % 44.0	40.0
Producer 44% Dairy Conc.	N.P.N. % 21.0	24.3

KENTUCKY REGULATORY BULLETIN 219
REPORT OF OFFICIAL FEED SAMPLES ANALYZED - - - 1974

MANUFACTURER, ADDRESS AND BRAND	GUARANTEED	FOUND
Producer 44% Dairy Conc.	Crude Protein % 44.0	51.5
Producer 44% Dairy Conc.	Crude Protein % 44.0	41.3
Producer Pig Grower T Med.	Tylosin G/T 40.0	20.1
Producer Hog Finisher	Crude Fiber % 3.5	5.8
Producer Hog Finisher	Crude Fiber % 3.5	6.6
Producer Hog Finisher	Crude Fiber % 3.5	7.2
Producer 40% Pig & Hog Supplement	Crude Protein % 40.0	37.3
Producer Pig Balancer "T" Automatic Med.	Tylosin G/T 160.0	93.5
Producer Hog Balancer "T" Automatic Med.	Tylosin G/T 200.0	101.3
Gallatin Co. Farm Supply, Warsaw, KY 41095		
Total Samples Analyzed 1		
Total Violative Samples 0		
Garrard Mills, Lancaster, KY 40444		
Total Samples Analyzed 2		
Total Violative Samples 0		
J.I. Gates Milling Co., Columbus, OH 43223		
Total Samples Analyzed 5		
Total Violative Samples 1		
Well Maid Sweet Feed	Crude Protein % 24.0	19.7
Germantown Milling Co., Germantown, KY 41044		
Total Samples Analyzed 1		
Total Violative Samples 0		
Gooch Feed Mill, Lincoln, NB 68501		
Total Samples Analyzed 1		
Total Violative Samples 0		
Jerry Graven Cattle & Feed Service, Glasgow, KY 42141		
Total Samples Analyzed 1		
Total Violative Samples 0		
Greenville Feed & Grain, Greenville, KY 42345		
Total Samples Analyzed 1		
Total Violative Samples 0		
Hardin Co. Milling, Elizabethtown, KY 42701		
Total Samples Analyzed 3		
Total Violative Samples 0		
Harvest Brand, Pittsburg, KS 66762		
Total Samples Analyzed 7		
Total Violative Samples 2		
Sweet Ga. Brown Dry Molasses	Crude Fiber % 16.0	20.0
Sweet Ga. Brown Dry Molasses	Crude Fiber % 19.0	22.5
	Invert Sugar % 42.0	36.0

REPORT OF OFFICIAL FEED SAMPLES ANALYZED - - - 1974

MANUFACTURER, ADDRESS AND BRAND	GUARANTEED	FOUND
Haydon Mill & Grain, Springfield, KY 40069		
Total Samples Analyzed	7	
Total Violative Samples	3	
Magic Starting Mash Crumbles Med.	Crude Protein % 21.0	15.7
	Zoalene % 0.0083	0.0041
Magic Growing Mash Crumbles Med.	Zoalene % 0.0104	0.0054
Magic Growing Mash Crumbles Med.	Zoalene % 0.0104	0.0050
Heaven Hill Distilleries, Bardstown, KY 40004		
Total Samples Analyzed	7	
Total Violative Samples	0	
Dr. Heinz Co., Washington Ch, OH 43160		
Total Samples Analyzed	2	
Total Violative Samples	0	
The Hyland Co., Ashland, KY 41101		
Total Samples Analyzed	7	
Total Violative Samples	0	
Igleheart Operation, Kool-Aid Division, Evansville, IN 47707		
Total Samples Analyzed	3	
Total Violative Samples	0	
Indiana Farm Bureau, Indianapolis, IN 46204		
Total Samples Analyzed	1	
Total Violative Samples	0	
Industrial Molasses Corp., Leonia, NJ 07605		
Total Samples Analyzed	3	
Total Violative Samples	2	
Cane Molasses	Invert Sugar % 45.0	38.7
Cane Molasses	Invert Sugar % 45.0	38.5
Industrial Molasses, Minn., MN 55435		
Total Samples Analyzed	2	
Total Violative Samples	2	
Sweet 45	Invert Sugar % 45.0	39.6
Sweet 45	Crude Protein % 10.0	6.1
Int'l. Multifoods, Minn., MN 55402		
Total Samples Analyzed	57	
Total Violative Samples	7	
Supersweet Record 18% Dairy Pellets N U	Crude Fiber % 9.0	11.5
Supersweet Beefmaker G	N.P.N. % 20.1	22.6
Supersweet Beefmaker H	Crude Protein % 30.0	27.9
Supersweet Record 14% Dairy Pellets	Crude Fiber % 9.0	12.2

KENTUCKY REGULATORY BULLETIN 219
REPORT OF OFFICIAL FEED SAMPLES ANALYZED - - - 1974

MANUFACTURER, ADDRESS AND BRAND	GUARANTEED	FOUND
Supersweet Milkmaker S-T	Crude Protein % 38.0	35.2
Supersweet Superpig Builder 3211 Med.	Crude Protein % 17.0	38.6
	Tylosin G/T 100.0	3.3
Supersweet Calf Supplement Med.	Chlortetracycline G/T 167.0	77.5
Kaler Milling Co., Symsonia, KY 42082		
Total Samples Analyzed 3		
Total Violative Samples 1		
16% Milking Dairy Feed	Crude Protein % 16.0	13.4
Keco Milling Co., McKenzie, TN 38201		
Total Samples Analyzed 13		
Total Violative Samples 2		
Martha White 45% Dairy Supplement	Crude Protein % 45.0	42.7
Martha White P-V-M Fall & Winter Cattle S U	Crude Protein % 30.0	27.7
KY By-Products Corp., Louisville, KY 40211		
Total Samples Analyzed 15		
Total Violative Samples 2		
Kings 37% Protein Block Dri-Molass	Salt, Max % 15.0	18.1
	Invert Sugar % 42.0	37.5
Kingston Farmers Exchange, Kingston, OH 45644		
Total Samples Analyzed 5		
Total Violative Samples 3		
King 24% Dairy Feed	Crude Protein % 24.0	19.7
Cereal Food Fine	Crude Fat % 8.0	4.3
King Economy 16% Beef Feed	N.P.N. % 5.2	9.1
Lauhoff Grain Co., Danville, IL 61832		
Total Samples Analyzed 1		
Total Violative Samples 0		
Lilly Bros. Seed Co., Hopkinsville, KY 42240		
Total Samples Analyzed 3		
Total Violative Samples 1		
Big H 12% Hog Finisher Med.	Arsanilic Acid % 0.005	0.007
Loretto Feed & Fert., Loretto, KY 40037		
Total Samples Analyzed 3		
Total Violative Samples 0		
Loves Feed & Hatchery, Bowling Green, KY 42101		
Total Samples Analyzed 20		
Total Violative Samples 5		

REPORT OF OFFICIAL FEED SAMPLES ANALYZED . . . 1974

MANUFACTURER, ADDRESS AND BRAND	GUARANTEED	FOUND
Lowes Dried Molasses	Crude Fiber % 16.0	20.7
Lowes Farro-Pel Ration Med.	Furazolidone % 0.0165	0.0076
Lowes Pig-Gro Med.	Arsanilic Acid 0.01	0.0
Lowes 42% Pig Conc.	Bacitracin G/T 52.5	8.0
	Arsanilic Acid % 0.040	0.003
Lowes Pig Wormer Med.	Piperazine Base % 0.200	0.280
M & W Milling Co., Columbia, KY 42728		
Total Samples Analyzed 3		
Total Violative Samples 2		
M & W 44% Dairy Conc.	Crude Protein % 44.0	41.0
M & W 44% Dairy Conc.	Crude Protein % 44.0	41.0
Marksberry Feed Dairy Supply, Philpot, KY 42366		
Total Samples Analyzed 5		
Total Violative Samples 1		
Golden Pro "60" No. 9465 B	Crude Protein % 60.0	53.5
Mayes-Helm & Coyle, Perryville, KY 40468		
Total Samples Analyzed 1		
Total Violative Samples 0		
Mayfield Sweet Feed Mill, Mayfield, KY 42066		
Total Samples Analyzed 13		
Total Violative Samples 2		
Maysweet Worming Feed Med.	Crude Protein % 14.0	11.8
Maysweet 20% Chick Starter & Grower	Chlortetracycline G/T 40.0	16.5
McCauley Bros. Seed, Versailles, KY 40383		
Total Samples Analyzed 6		
Total Violative Samples 3		
Ag Time 50% Hi-Time Conc.	Crude Protein % 50.0	40.5
Ag Time Hi-Energy 16% Dairy Feed	Crude Protein % 16.0	13.5
	Crude Fiber % 7.0	10.9
Ag Time Post Time Horse Pellets	Crude Fiber % 7.5	9.6
J.A. McDonald & Sons, Rogersville, TN 37857		
Total Samples Analyzed 1		
Total Violative Samples 0		
McGahan & Co., Paintsville, KY 41240		
Total Samples Analyzed 4		
Total Violative Samples 1		
McGahans Check-R-Mix Laying Feed All Mash S A	Crude Protein % 18.0	15.6
Medley Distilling Co., Owensboro, KY 42301		
Total Samples Analyzed 1		
Total Violative Samples 0		

KENTUCKY REGULATORY BULLETIN 219
REPORT OF OFFICIAL FEED SAMPLES ANALYZED - - - 1974

MANUFACTURER, ADDRESS AND BRAND	GUARANTEED	FOUND
Metzger Bros., Paducah, KY 42001		
Total Samples Analyzed	1	
Total Violative Samples	0	
Mid-South Feeds, Nashville, TN 37209		
Total Samples Analyzed	6	
Total Violative Samples	2	
32% Dairy Conc.	Crude Protein % 32.0	29.6
	N.P.N. % 10.4	13.0
32% Dairy Conc.	Crude Protein % 32.0	28.6
Mohawk Milling Co., Newport, TN 37821		
Total Samples Analyzed	6	
Total Violative Samples	1	
Mohawk All-In-One Hog Feed	Crude Fiber % 8.0	12.7
Monarch Feed Mill, Dexter, MO 63841		
Total Samples Analyzed	1	
Total Violative Samples	0	
Monarch Milling Co., Mt. Sterling, KY 40353		
Total Samples Analyzed	2	
Total Violative Samples	0	
Moorman Manufacturing Co., Quincy, IL 62301		
Total Samples Analyzed	37	
Total Violative Samples	2	
Moormans Premix-Trate 80 Beef Finisher AU Med.	Chlortetracycline G/T 280.0	50.0
Moormans Beef Trate 80 AU Med.	Chlortetracycline G/T 280.0	80.0
Mullican Feed Mill, Stanley, KY 42375		
Total Samples Analyzed	6	
Total Violative Samples	0	
Nashville Oil Mill Corp., Nashville, TN 37202		
Total Samples Analyzed	4	
Total Violative Samples	0	
National Alfalfa Dehy. & Mill, Kansas City, MO 64112		
Total Samples Analyzed	1	
Total Violative Samples	0	
Nunn Milling Co., Evansville, IN 47712		
Total Samples Analyzed	12	
Total Violative Samples	0	

REPORT OF OFFICIAL FEED SAMPLES ANALYZED - - - 1974

MANUFACTURER, ADDRESS AND BRAND	GUARANTEED	FOUND
The Ohio Grain Co., Milford Center, OH 43045		
Total Samples Analyzed	1	
Total Violative Samples	0	
Owensboro Grain Co., Owensboro, KY 42301		
Total Samples Analyzed	18	
Total Violative Samples	0	
Owensboro Milling Co., Owensboro, KY 42301		
Total Samples Analyzed	27	
Total Violative Samples	4	
Trutest 44% Beef Cattle Supplement	Crude Protein % 44.0	40.1
Trutest 40% Hog Supplement	Crude Fiber % 6.0	8.3
Trutest 20% Pig Prestarter T/S Med.	Crude Fat % 4.7	2.4
Trutest 42% Pig Grower Conc. Med.	Crude Protein % 42.0	39.3
Pan American Mills, Bowling Green, KY 42101		
Total Samples Analyzed	47	
Total Violative Samples	13	
Green Valley 40% Dairy Conc.	N.P.N. % 20.0	25.1
	Crude Fiber % 8.0	14.3
13 Hog Finisher Pellets Med.	Arsanilic Acid % 0.006	0.002
	Chlortetracycline G/T 10.0	2.1
Green Valley 18% Sow & Pig Pellets Med.	Arsanilic Acid % 0.01	0.014
Green Valley 18% Sow & Pig Pellets Med.	Crude Fiber % 6.0	8.1
Green Valley 16% Pig Grower Pellets Med.	Arsanilic Acid % 0.01	0.00
	Chlortetracycline G/T 18.0	0.0
Green Valley 16% Pig Grower Pellets Med.	Chlortetracycline G/T 18.0	6.9
Green Valley Feeds 35% Hog Conc. Med.	Arsanilic Acid % 0.05	0.124
	Chlortetracycline G/T 80.0	144.0
Green Valley 40% Hog Suppl. Med.	Crude Protein % 40.0	37.9
	Arsanilic Acid % 0.050	0.022
	Chlortetracycline G/T 80.0	15.1
Green Valley Dog Food	Crude Protein % 21.0	26.7
Green Valley Dog Food	Crude Protein % 21.0	27.4
Valley Sweet Dried Molasses	Crude Fiber % 25.0	29.5
	Invert Sugar % 42.0	35.2
Valley Sweet Dried Molasses	Crude Fiber % 25.0	27.0
	Invert Sugar % 42.0	37.1
Valley Sweet Dried Molasses	Crude Fiber % 25.0	28.8
	Invert Sugar % 42.0	31.9
Pfizer, Inc., New York, NY 10017		
Total Samples Analyzed	3	
Total Violative Samples	0	
Pierce & Williams, Hopkinsville, KY 42240		
Total Samples Analyzed	4	
Total Violative Samples	0	

REPORT OF OFFICIAL FEED SAMPLES ANALYZED - - - 1974

MANUFACTURER, ADDRESS AND BRAND	GUARANTEED	FOUND
Pioneer Farm Service, Owensboro, KY 42301		
Total Samples Analyzed	1	
Total Violative Samples	0	
Princeton Mills, Princeton, KY 42445		
Total Samples Analyzed	4	
Total Violative Samples	0	
Rachelle Lab., Long Beach, CA 90801		
Total Samples Analyzed	1	
Total Violative Samples	0	
Ralston Purina, St. Louis, MO 63199		
Total Samples Analyzed	457	
Total Violative Samples	62	
Purina Range Chow Mineral Hi-M	N.P.N. %	2.0
Purina R Special Steer Fatena R 40 (G)	Crude Protein %	40.0
Purina Receiving Chow #1 SM-AB (G) Med.	Crude Protein %	12.0
Purina Special Steer Fatena 50	Crude Protein %	50.0
	N.P.N. %	35.0
Purina Special Steer Fatena 50 (G)	Crude Protein %	50.0
	N.P.N. %	35.0
Purina Special Steer Fatena 50 (G)	Crude Protein %	50.0
	Salt, Max. %	6.2
Purina Special Steer Fatena 50 (G)	Crude Protein %	50.0
Purina Special Steer Fatena 50 (G)	Crude Protein %	50.0
Purina Special Steer Fatena 50 (G)	Crude Protein %	50.0
Purina Special Steer Fatena 50 (G)	Crude Protein %	50.0
Purina Special Steer Fatena 50 (G)	N.P.N. %	35.0
Purina Special Steer Fatena 50 (G)	Crude Protein %	50.0
Purina Special Steer Fatena 50 (G)	Crude Protein %	50.0
Purina Special Steer Fatena 50 (G)	Crude Protein %	50.0
Purina Special Steer Fatena 50 (G)	N.P.N. %	35.0
Purina Special Steer Fatena 50 (G)	Crude Protein %	50.0
Purina Special Steer Fatena 50 (G)	Crude Protein %	50.0
Purina Special Steer Fatena 50 (G)	Crude Protein %	50.0
Purina Special Steer Fatena 50 (G)	N.P.N. %	35.0
Purina Special Steer Fatena 50 (G)	Crude Protein %	50.0
Purina Special Steer Fatena 50 (G)	Crude Protein %	50.0
Purina Special Steer Fatena 50 (G)	Crude Protein %	50.0
Purina Special Steer Fatena 50 (G)	N.P.N. %	26.0
Purina Special Steer Fatena 40 (G)	Crude Protein %	40.0
Purina Special Steer Fatena 40 (G)	N.P.N. %	25.0
Purina Special Steer Fatena 40 (G)	Crude Protein %	40.0
Purina Special Steer Fatena 40 (G)	Crude Protein %	40.0
Purina Special Steer Fatena 40 (G)	Crude Protein %	40.0
Purina Special Steer Fatena 40 (G)	N.P.N. %	26.0
Purina Special Steer Fatena 40 (G)	Crude Protein %	40.0
Purina Special Steer Fatena 40 (G)	Crude Protein %	40.0
Purina Special Steer Fatena 40 (G)	Crude Protein %	40.0
Purina Special Steer Fatena 32	Crude Protein %	32.0
Purina Special Steer Fatena 32	Crude Protein %	32.0
Purina Special Steer Fatena 32 (G)	Crude Protein %	32.0
	N.P.N. %	16.0
Purina Special Steer Fatena 32 (G)	Crude Protein %	32.0
	N.P.N. %	16.0
Purina Special Steer Fatena 32 (G)	Crude Protein %	32.0
Purina Special Steer Fatena 32 (G)	Crude Protein %	32.0
Purina Test Cow Milking Chow 18% Coarse (G)	N.P.N. %	3.0
Purina Cow Chow Conc. B 38% (G)	Crude Protein %	38.0
Purina Dairy Conc. 44% (G)	Crude Protein %	44.0
	N.P.N. %	22.0

REPORT OF OFFICIAL FEED SAMPLES ANALYZED . . . 1974

MANUFACTURER, ADDRESS AND BRAND	GUARANTEED	FOUND
Purina Dairy Conc. 44% (G)	Crude Protein % 44.0	41.7
Purina Dairy Conc. 44% (G)	Crude Protein % 44.0	41.3
Purina Dairy Conc. 44% (G)	N.P.N. % 20.0	22.1
Purina Dairy Conc. 44% (G)	Crude Protein % 44.0	40.2
Purina Dairy Conc. 44% (G)	N.P.N. % 22.0	25.9
	Crude Fiber % 10.0	13.0
Purina Dairy Conc. 42% (G)	Crude Protein % 42.0	39.2
Purina Dairy Conc. 42% (G)	Crude Protein % 42.0	38.4
Purina Dairy Conc. 42% (G)	Crude Protein % 42.0	37.3
Purina Dairy Conc. 42% (Special) (G)	N.P.N. % 12.0	15.7
Purina Pig Startena (G) Med.	Penicillin G/T 50.0	18.4
	Sulfamethazine % 0.011	0.006
Purina Pig Growena (G) Med.	Tylosin G/T 20.0	9.6
Purina Pig Startena MDX (G) Med.	Carbadox % 0.0055	0.0024
Purina Commercial Hog Finisher T 20 (G) Med.	Tylosin G/T 20.0	13.3
Purina Commercial Hog Finisher T 20 (G) Med.	Tylosin G/T 20.0	12.5
Purina Pig Chow 40 (G) Med.	Sulfamethazine % 0.04	0.007
	Chlortetracycline G/T 400.0	10.0
	Penicillin G/T 200.0	8.0
Purina Pig Chow 40 Med.	Crude Protein % 40.0	36.6
Purina Hog Supplement 40% (G)	Crude Protein % 40.0	37.2
Purina Hog Chow (G) Med.	Crude Protein % 36.0	32.1
Purina Hog Chow Med.	Oxytetracycline G/T 50.0	222.0
	Crude Protein % 36.0	33.2
Purina Farblend Hog Chow (G)	Bacitracin G/T 100.0	24.8
Purina Hog Chow BN (G) Med.	Bacitracin G/T 100.0	47.7
Purina Hog Chow BN (G) Med.	Bacitracin G/T 100.0	38.7
Purina Hog Chow BN (G) Med.	Bacitracin G/T 100.0	42.5
Purina Hog Chow BN (G) Med.	Bacitracin G/T 100.0	48.0
Purina Stimupak 250 Med.	Oxytetracycline G/lb 2.0	3.7
	Crude Protein % 5.0	11.0
Purina Pura-Lasses	Crude Fiber % 15.0	24.2
Purina Pura-Lass	Invert Sugar % 42.0	36.5
	Crude Fiber % 15.0	26.5
Purina Pura-Lasses	Invert Sugar % 42.0	37.5
Rico Liquids, Aliceville, AL 35442		
Total Samples Analyzed	8	
Total Violative Samples	0	
Robbins Bros. Auburn Roller Mills, Auburn, KY 42206		
Total Samples Analyzed	1	
Total Violative Samples	0	
Robertson Corp., Seymour, IN 47274		
Total Samples Analyzed	1	
Total Violative Samples	0	
Allen Robertson & Co., Louisville, KY 40204		
Total Samples Analyzed	7	
Total Violative Samples	1	
Farm-R-Choice 35% Sow Supplement	Crude Fiber % 3.5	7.4

KENTUCKY REGULATORY BULLETIN 219
REPORT OF OFFICIAL FEED SAMPLES ANALYZED - - - 1974

MANUFACTURER, ADDRESS AND BRAND	GUARANTEED	FOUND
Robinson Milling Co., Somerset, KY 42501		
Total Samples Analyzed	17	
Total Violative Samples	3	
Sun-Ray 44% Dairy Conc.	Crude Protein % 44.0	41.4
Sun-Ray 16% Nursing Sow Ration Med.	Arsanilic Acid % 0.010	0.00
Jersey 16% Mixed Feed	Crude Protein % 16.0	13.9
G.P. Rose, Nashville, TN 37211		
Total Samples Analyzed	3	
Total Violative Samples	0	
Russell Springs Milling Co., Russell Springs, KY 42642		
Total Samples Analyzed	1	
Total Violative Samples	0	
Sandusky Mill, Harrodsburg, KY 40330		
Total Samples Analyzed	5	
Total Violative Samples	1	
Sandusky 16% Dairy Feed	N.P.N. % 4.0	7.1
Charles H. Schenck & Sons, Vincennes, IN 47591		
Total Samples Analyzed	3	
Total Violative Samples	2	
Dehydrated Alfalfa Meal	Crude Fiber % 27.0	30.1
Dehydrated Alfalfa Meal	Crude Fiber % 27.0	30.1
Scotts Auburn Mills, Auburn, KY 42206		
Total Samples Analyzed	4	
Total Violative Samples	0	
Scott Co. Milling, Sikeston, MO 63801		
Total Samples Analyzed	20	
Total Violative Samples	0	
So. Cotton Oil Co., Memphis, TN 38101		
Total Samples Analyzed	12	
Total Violative Samples	3	
SCO-Co 41% Protein Cottonseed Meal Prime QU	Crude Protein % 41.0	38.1
SCO-Co 41% Protein Cottonseed Meal Prime QU	Crude Protein % 41.0	38.7
SCO-Co. 41% Protein Cottonseed Meal Prime QU	Crude Protein % 41.0	38.3
S.S. Hopkinsville Coop., Hopkinsville, KY 42240		
Total Samples Analyzed	3	
Total Violative Samples	0	

REPORT OF OFFICIAL FEED SAMPLES ANALYZED - - - 1974

MANUFACTURER, ADDRESS AND BRAND	GUARANTEED	FOUND
S.S. Coop., Richmond, VA 23213		
Total Samples Analyzed	217	
Total Violative Samples	27	
S.S. Co. Lass Mix A	Crude Fiber %	15.0
S.S. Medi-Pak (FT) Med.	Oxytetracycline G/lb	3.2
Cattle Tone Pellets Med CS 7431	Crude Protein %	12.0
	N.P.N. %	2.0
	Sulfamethazine %	0.0077
Pro Blend 50 1610	Crude Protein %	50.0
Pro Blend 50 1610	Crude Protein %	50.0
	N.P.N. %	25.0
Pro Blend 50 1610	Crude Protein %	50.0
Pro Blend 50 1610	Salt, Max. %	4.0
S.S. 44% Farm Mill Supplement C	Crude Protein %	44.0
	N.P.N. %	20.0
44% Farm Mill Supplement Pellets C	N.P.N. %	20.0
Super Blend 65 C	Crude Protein %	65.0
Super Blend 65 C	Crude Protein %	65.0
Super Blend 65 C	Crude Protein %	65.0
Super Blend 65 C	Crude Protein %	65.0
Super Blend 65 C	Crude Protein %	65.0
Super Blend 65 C	Crude Protein %	65.0
Super Blend 65 C	Crude Protein %	65.0
50% Beef Supplement C	Crude Protein %	50.0
50% Beef Supplement C	Crude Protein %	50.0
Pro-Mo Liquid Supplement 12350	Crude Protein %	32.0
24% Milk Maker 1020	Crude Protein %	24.0
Pig Starter Med S 680	Penicillin G/T	50.0
Pig Developer Med. 632	Arsanilic Acid %	0.010
Pig Starter Pellets M Med. 6191	Carbadox %	0.0055
Super Hog Conc. 690	Crude Protein %	27.0
S.S. 38% Sow & Pig Supplement Med. C	Chlortetracycline G/T	67.0
	Crude Protein %	38.0
38% Sow & Pig Supplement Med. C	Chlortetracycline G/T	67.0
	Crude Protein %	40.0
35% Hog Supplement Med. 620	Chlortetracycline G/T	80.0
S.S. 40% Pork Maker	Crude Protein %	40.0
A.E. Staley Manufacturing, Decatur, IL 62525		
Total Samples Analyzed	4	
Total Violative Samples	0	
Sturgis Milling Co., Sturgis, KY 42459		
Total Samples Analyzed	19	
Total Violative Samples	4	
Susie Q 15% Sweet Dairy	Crude Protein %	16.0
	N.P.N. %	5.2
Hoppys 20% Pig & Sow Meal Med.	Crude Protein %	20.0
Hoppys 18% Pig Starter Pellets A Med.	Penicillin G/T	50.0
Hoppys 35% Pig Supplement Med.	Penicillin G/T	12.5
SuCrest Corp., New York, NY 10005		
Total Samples Analyzed	4	
Total Violative Samples	0	

KENTUCKY REGULATORY BULLETIN 219
REPORT OF OFFICIAL FEED SAMPLES ANALYZED . . . 1974

MANUFACTURER, ADDRESS AND BRAND	GUARANTEED	FOUND
Super-Mol, Hughes Feed-Grain, Tampa, FL 33619		
Total Samples Analyzed 6		
Total Violative Samples 1		
Super Lass	Invert Sugar % 42.0	28.1
Supreme Mills, Glasgow, KY 42141		
Total Samples Analyzed 41		
Total Violative Samples 9		
Feeders Pride 16% Dairy Feed	Crude Fiber % 10.0	12.2
Supreme Brand 45% Dairy Conc.	Crude Protein % 45.0	37.6
Supreme Brand 17 1/2% Protein Hog & Pig Feed Med.	Tylosin G/T 20.0	7.6
Supreme Brand 18% Protein Pig Ration Med.	Tylosin G/T 20.0	4.1
Happy Valley Hog Wormer Med.	Piperazine Base % 0.208	0.094
Supreme Premo 37% Feed Block	Crude Protein % 37.0	34.2
Supreme Premo 37% Feed Block	Crude Fiber % 6.0	8.0
Supreme Premo Grass Tetany Block	Crude Protein % 37.0	34.9
Happy Valley Hog Wormer Med.	Salt, Max. % 25.0	36.8
	Piperazine Base % 0.208	0.106
D.B. Sutherland & Sons, Bloomfield, KY 40008		
Total Samples Analyzed 1		
Total Violative Samples 0		
T & H Feed Service, Lebanon, KY 40033		
Total Samples Analyzed 1		
Total Violative Samples 0		
Taylor Co. Feed Co., Campbellsville, KY 42718		
Total Samples Analyzed 1		
Total Violative Samples 0		
Tenn. Valley Cotton Oil Mill, Decatur, AL 35601		
Total Samples Analyzed 10		
Total Violative Samples 0		
Thomas, Thomas and Harold Thomas, Morgan- field, KY 42437		
Total Samples Analyzed 2		
Total Violative Samples 1		
Golden Pro "60" #9465B	Crude Protein % 60.0	51.5
Thompson Hayward Chemical Co., Kansas City, KS 66110		
Total Samples Analyzed 2		
Total Violative Samples 0		

REPORT OF OFFICIAL FEED SAMPLES ANALYZED - - - 1974

MANUFACTURER, ADDRESS AND BRAND	GUARANTEED	FOUND
Thurmonds Coal & Feed Co., Murray, KY 42071		
Total Samples Analyzed	1	
Total Violative Samples	0	
Triple F Feeds, Des Moines, IA 50322		
Total Samples Analyzed	2	
Total Violative Samples	0	
USS Agr. Chemical, Nashville, TN 37209		
Total Samples Analyzed	1	
Total Violative Samples	0	
Vigortone Products, Cedar Rapids, IA 52406		
Total Samples Analyzed	1	
Total Violative Samples	1	
Vigortone Super V-8 Pre-Mix Med.	Streptomycin G/lb 0.5	0.09
Vylactos Lab., Des Moines, IA 50313		
Total Samples Analyzed	12	
Total Violative Samples	9	
Cane Molasses Dehydrated	Crude Fiber % 18.0	21.9
Scotch O Lass	Invert Sugar % 43.0	33.3
Dri-Las	Crude Fiber % 18.0	21.5
Dri-Las	Crude Fiber % 18.0	21.0
Dri-Las	Crude Fiber % 18.0	22.5
Dri-Las	Crude Fiber % 21.0	27.1
Dri-Las	Crude Fiber % 21.0	25.1
Dri-Las	Crude Fiber % 21.0	29.1
Dri-Las	Crude Fiber % 28.0	32.3
Mr. Blackstrap #87 Cane Molasses	Crude Fiber % 25.0	27.1
Wayne Co. Feed Supply Co., Monticello, KY 42633		
Total Samples Analyzed	1	
Total Violative Samples	0	
Weisenbergers Mill, Midway, KY 40347		
Total Samples Analyzed	3	
Total Violative Samples	0	
Wells Div. National Packing Co., Monmouth, IL 61462		
Total Samples Analyzed	1	
Total Violative Samples	0	
West Tenn. Soya Mill, Tiptonville, TN 38257		
Total Samples Analyzed	6	
Total Violative Samples	0	

REPORT OF OFFICIAL FEED SAMPLES ANALYZED - - - 1974

MANUFACTURER, ADDRESS AND BRAND	GUARANTEED	FOUND
Western Alfalfa Corp., Shawnee Miss., KS 66201		
Total Samples Analyzed	1	
Total Violative Samples	0	
Wheatley Products, Morganfield, KY 42437		
Total Samples Analyzed	1	
Total Violative Samples	0	
R.L. Wiles Feed Mills, Nashville, TN 37201		
Total Samples Analyzed	3	
Total Violative Samples	0	
Winn Milling Co., Greensburg, KY 42743		
Total Samples Analyzed	1	
Total Violative Samples	0	

* Samples are "in violation" when either deficient or excessive of a component guaranty as follows:

Protein:	More than 2 units* below guaranty. Exceeds guaranty by 5 or more units.
N.P.N.:	Exceeds guaranty by more than 2 units.
Fat:	More than 2 units below guaranty. Exceeds guaranty by 5 or more units.
Fiber:	Exceeds guaranty by more than 2 units
Invert Sugar:	10% lower than guaranty.
Salt:	Varies from guaranty by plus or minus 2 units.
Calcium:	Varies from guaranty by plus or minus 2 units.
Tylosin:	<u>+30%</u>
Amprolium, Arsanilic Acid, Carbadox, Copper, Furazolidone, Iron, Magnesium, Manganese, Nitrofurazone, Phe- nothiazine, Piper- zine, Roxarsone, Sulf- amethazine, Zinc, Zoalene:	<u>+40%</u>
Bacitracin, Chlortet- racycline, Hygromycin B, Streptomycin:	<u>+50%</u>

* One percent point is considered a unit. Example: a "found" value of 15% is 1 unit below a guarantee of 16%.