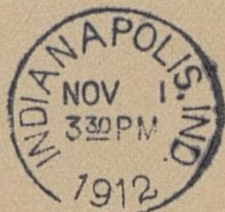


My dear Miss Clay <sup>Indianapolis Ind.</sup>  
<sup>Nov. 1, 1912</sup>  
Your letter to our Treas. Miss Harnet  
Tobbe has been received and in  
answer will say the certified list  
of 300 members, will be sent to  
you tomorrow also check for  
dues for same. Do all you  
can to get us representation at  
the Natl. Convention Sincerely  
816 O.T. Bldg. Mrs M. Henderson <sup>Secy.</sup>



THIS SIDE OF CARD IS FOR ADDRESS ONLY


Miss Laura Clay  
189 N. Mill St  
Lexington  
Kentucky

[Nov 1, 1912]

# National American Woman Suffrage Association

(Member National Council of Women and International Woman Suffrage Alliance)

President, Rev. Anna Howard Shaw, Moylan, Pa.  
First Vice President, Rachel Foster Avery, Swarthmore, Pa.  
Second Vice President, Florence Kelley,  
105 East 22nd Street, New York City.  
Corresponding Secretary, Kate M. Gordon,  
1800 Prytania Street, New Orleans, La.

4  
  
NATIONAL HEADQUARTERS  
Warren, Ohio

Recording Secretary, Alice Stone Blackwell,  
6 Beacon Street, Boston, Mass.  
Treasurer, Harriet Taylor Upton, Warren, Ohio.  
Auditors: { Laura Clay, 189 N. Mill St., Lexington, Ky.  
Ella S. Stewart, 5464 Jefferson Ave., Chicago, Ill.

(that is, not State) associations under Article III, Sec. I. of the constitution. Possibly the first one desires to be admitted as a State League. I shall write to them for further information; but in the meantime, if they wish to be represented at the Philadelphia convention they must be admitted at once. Therefore I am asking some votes about them:

(1) Do you vote to admit the Everybody's Equal Suffrage League of Oregon as a member, but not a state League? *No*

(2) Do you vote to receive it as a State Association, if it so desires?

*No*

(I). Do you vote to admit the Portland Equal Suffrage League as a member, but not a state League? *No*

As these applications are dated Oct. 2nd, and would have been considered in time for representation, on payment of dues, if I had been at home to receive them, I am also asking you to vote on recommending their representation at the convention in Philadelphia, provided they are considered eligible, pay even belated dues, and have representatives in person at Philadelphia. We are hoping they will come as representatives of victory, and therefore ought not to be excluded on technicalities. Therefore;

Do you vote that if the vote is favorable to the admission of these Leagues, it shall take effect, or at least, that you will recommend the National Convention to suspend rules for their benefit, so that their representatives may have seats and votes at the Philadelphia Convention?

*No*

NOV 1 1912

# National American Woman Suffrage Association

(Member National Council of Women and International Woman Suffrage Alliance)

President, Rev. Anna Howard Shaw, Moylan, Pa.  
First Vice President, Rachel Foster Avery, Swarthmore, Pa.  
Second Vice President, Florence Kelley,  
105 East 22nd Street, New York City.  
Corresponding Secretary, Kate M. Gordon,  
1800 Prytania Street, New Orleans, La.



NATIONAL HEADQUARTERS  
Warren, Ohio

Recording Secretary, Alice Stone Blackwell,  
6 Beacon Street, Boston, Mass.

Treasurer, Harriet Taylor Upton, Warren, Ohio.

Auditors: { ~~Paula Clay~~ 189 N. Mill St., Lexington, Ky.  
Ella S. Stewart, 5464 Jefferson Ave., Chicago, Ill.

2.

(2) I have received an application, dated Oct. 16th, from Mrs. Harriet S. Blatch, for admission of the Women's Political Union. Mrs. Dennett writes that she has already sent a copy of Mrs. Blatch's letter to each of you; so all that is necessary for me is to ask your vote:

Do you vote to receive the Women's Political Union, on terms stated in Mrs. Blatch's letter?

*No - not until terms of constitution are complied with.*

(3) I have received application, dated Oct. 5th, from the Minnesota Equal Ave. Suffrage League, signed by Theresa B. Peyton, President, St. Paul, Minn. 581 Selby

The application is accompanied by a certified list of 304 members, under the heading: "We, the undersigned, President and Cor. Secretary of the Minnesota Equal Franchise League, a State Suffrage Society operating in two and many more counties of the State of Minnesota, do hereby certify that our organization is composed of the following members, viz:-

Mrs. Peyton says, "the new organization is specializing in county organization work and plans to prepare the state in that way, we have always felt that this was one of the weak points in the older association and for that reason will supplant the city work with out of town work."

She says she hopes they will be allowed their representation in the coming convention; and on advice of Dr. Anna Shaw, is sending \$30.00 to the National treasurer so that she may have the dues before her books are closed.

The Cor. Secretary's name is Abraham I. Levin.

Do you vote to admit the Minnesota Equal Suffrage League as a State Association to the National .A.W.S.A.?

*Yes.*

Nov 1, 1912

# National American Woman Suffrage Association

(Member National Council of Women and International Woman Suffrage Alliance)

President, Rev. Anna Howard Shaw, Moylan, Pa.  
First Vice President, Rachel Foster Avery, Swarthmore, Pa.  
Second Vice President, Florence Kelley,  
105 East 22nd Street, New York City.  
Corresponding Secretary, Kate M. Gordon,  
1800 Prytania Street, New Orleans, La.



NATIONAL HEADQUARTERS  
Warren, Ohio

Recording Secretary, Alice Stone Blackwell,  
6 Beacon Street, Boston, Mass.  
Treasurer, Harriet Taylor Upton, Warren, Ohio.  
Auditors: { Laura Clay, 189 N. Mill St., Lexington, Ky.  
Ella S. Stewart, 5464 Jefferson Ave., Chicago, Ill.

The application of the Ohio Equal Franchise Association for admission has received a majority of votes in favor. It has sent to me a certified list of the three hundred or more members required; and on my advice, has paid dues pending hearing the decision of our Committee. The president is Miss Flora E. Worthington, 628 Lincoln Avenue, Cincinnati, Ohio.

As all of you know the time is short before the Philadelphia convention, I hope you will pardon the long delay I have been forced to make in writing for votes on these applications, and answer by return mail.

Very truly yours,

*Laura Clay*

Chairman of N.A.W.S.A. Committee on

Membership.

*I vote to admit the Ohio  
Equal Franchise Association*

*Harriet May Mills*

GEORGE HOWE  
Editor

# PROGRESS

TELEPHONE  
BRYANT 6671

A MONTHLY REVIEW OF HUMAN ADVANCEMENT  
*Political, Social, and Economic*

PUBLISHED BY  
THE PROGRESS PUBLISHING COMPANY  
527 FIFTH AVENUE

NEW YORK, November 1st, 1912.

Miss Laura Clay,  
189 N. Mill St.,  
Lexington, Ky.

My dear Miss Clay:-

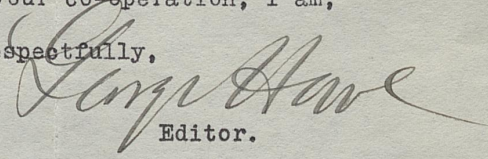
I have taken the liberty of sending you under separate cover a copy of the November issue of "Progress", which contains very interesting articles by Miss Jane Addams, Miss Frances A. Kellor, Mrs. Chas. H. Israels, and other leaders in the Progressive party.

The fight for Progressive principles has really just started and we must all of us stay in the firing ranks until we have accomplished victory in every direction. "Progress" will contain each month a review of all the Progressive news and special articles by its prominent leaders. Its columns will be open to every Progressive who desires to have his or her voice heard. I trust that you will approve of and assist its efforts.

I would like very much to have you among our readers and would appreciate your subscription to "Progress" very much indeed. To this end I have enclosed a subscription blank and a return envelope.

Thanking you in advance for your co-operation, I am,

Yours very respectfully,

  
Editor.

GH/J.

# PENNSYLVANIA WOMAN SUFFRAGE ASSOCIATION

ORGANIZED 1869

AUXILIARY TO THE NATIONAL AMERICAN WOMAN SUFFRAGE ASSOCIATION

PRESIDENT, ELLEN H. E. PRICE, 3316 ARCH STREET, PHILADELPHIA, PA.

VICE-PRESIDENT, ANNA M. ORME, WAYNE, PA.

CORRESPONDING SECRETARY, CAROLINE KATZENSTEIN,  
208 HALE BUILDING, PHILADELPHIA, PA.

STATE MEMBER OF THE EXECUTIVE COMMITTEE OF THE  
NATIONAL AMERICAN WOMAN SUFFRAGE ASSOCIATION

JANE CAMPBELL, 413 WEST SCHOOL HOUSE LANE, GERMANTOWN, PA.

RECORDING SECRETARY, MARY C. MORGAN,  
4418 OSAGE AVENUE, PHILADELPHIA, PA.

TREASURER, MATILDA ORR HAYS,  
516 REBECCA STREET, WILKINSBURG, PA.

AUDITORS { (MRS. ROBERT D. COARD,  
6334 HOWE STREET, PITTSBURG, PA.  
ELLEN L. THOMAS, NORRISTOWN, PA.

STATE HEADQUARTERS, 208 HALE BUILDING,  
COR. JUNIPER AND CHESTNUT STREETS, PHILADELPHIA, PA.

November 1, 1912.

Dear Member of Committee on Membership of the N.A.W.S.A.:

In view of the fact that the Pa. W. S. A. has carefully considered the work of the Pennsylvania Limited Suffrage League and has felt that it has been harmful to the cause in our State, I hope that the Membership Committee of the N.A.W.S.A. will uphold our Association in the attitude that it has taken toward this League.

Miss Winsor has written to us that if we will yield to her demands, she will consider joining our Association! Her demands are that she be left perfectly free to pursue a line of work not authorized and not approved by the Pa. W. S. A. and the other demand is that we request her to join our Association.

I am sorry that I have not all the letters that have passed between Miss Winsor and us and the time is too short to collect them from the Rec. Sec. and other members that have them. However, I think that I have enough on file to show you the state of affairs. On May 2nd, 1912, Miss Winsor wrote as follows:

"Will you inform me what are the formalities necessary if we join the State Woman Suffrage Association. We are a non-dues paying club. We are hesitating between joining the State Association and joining the National --directly. If we join the State, are we thereby members of the National without paying extra dues to the National? What representation are we entitled to in both State and National if we join the State association. We are contemplating office quarters for next winter (For a few months they rented a room in the Plastic Club for a few hours a day. I think that it has been more than a year since they have had Headquarters of any kind.) and hesitating between the Plastic Club and other arrangements.

Very truly yours,

(Signed) Mary Winsor. "

To Mrs. Price.

Mrs. Price replied May 6th, 1912, as follows:

"My dear Miss Winsor:

In reply to your favor of the 2nd inst, I enclose a copy of the Constitution of the Pennsylvania Woman Suffrage Association.

The fact that your Society is a non-dues paying Club will not affect its eligibility to either auxiliaryship or affiliation with the State Association.

But we, as an organization stand for universal suffrage (however much latitude may be allowed to individual conviction) and all our auxiliary societies must conform to this principle.

\*\*\*\*\*

Trusting that I have made this clear to you---and with the hope that we may be able to meet on common ground and work together for democracy, I am

Yours sincerely,

(Signed) E.H.E. Price.

[Nov. 1, 1912]

# PENNSYLVANIA WOMAN SUFFRAGE ASSOCIATION

ORGANIZED 1869

AUXILIARY TO THE NATIONAL AMERICAN WOMAN SUFFRAGE ASSOCIATION

PRESIDENT, ELLEN H. E. PRICE, 3316 ARCH STREET, PHILADELPHIA, PA.

VICE-PRESIDENT, ANNA M. ORME, WAYNE, PA.

CORRESPONDING SECRETARY, CAROLINE KATZENSTEIN,  
208 HALE BUILDING, PHILADELPHIA, PA.

STATE MEMBER OF THE EXECUTIVE COMMITTEE OF THE  
NATIONAL AMERICAN WOMAN SUFFRAGE ASSOCIATION

JANE CAMPBELL, 413 WEST SCHOOL HOUSE LANE, GERMANTOWN, PA.

RECORDING SECRETARY, MARY C. MORGAN,  
4418 OSAGE AVENUE, PHILADELPHIA, PA.

TREASURER, MATILDA ORR HAYS,  
516 REBECCA STREET, WILKINSBURG, PA.

AUDITORS { MRS. ROBERT D. COARD,  
6334 HOWE STREET, PITTSBURG, PA.  
ELLEN L. THOMAS, NORRISTOWN PA.

STATE HEADQUARTERS, 208 HALE BUILDING,  
COR. JUNIPER AND CHESTNUT STREETS, PHILADELPHIA, PA.

(21)

Member of Committee on Membership of the N.A.W.S.A.

On May 31st, I received the following letter from Dr. Shaw:  
"My dear Miss Katzenstein:-

Thank you for your letter and the copy of Mrs. Price's.  
I believe Miss Winsor has sent a request to become affiliated with the National Woman Suffrage Association, but I have not heard yet just what has been done with the request, whether or not it will be accepted by the committee. Miss Winsor, I think, is a very sincere and earnest person, but I cannot help feeling that her limited suffrage ideas are very harmful and that their very paucity makes them so. And, while I have no fear she will ever be able to effect the National Association, or persuade our body to in any way speak for limited suffrage, nevertheless I fear that there will be a great deal of time wasted and unpleasant feeling developed in regard to it. I do wish she would give it up and join in for full suffrage, because it is absolutely useless to advocate her theories for they could not get passed by any legislature this side of Judgment Day, and it is particularly difficult at legislative hearings. \*\*\*\*\*

Faithfully yours,

(Signed) Anna H. Shaw."

So true is the statement made by Dr. Shaw in regard to the futility of their work that I should like to add a part of a conversation that I had with Judge Edward Biddle who drew up the Limited Bill that was presented at the same Legislative Hearing that before which our Bill came in 1910. The Judge admitted that the Limited Bill is not practical and said to me, "And now, you will like to ask me why I have worked for the Bill." To my reply that that was just what I should like to ask, he said, "I shall have to waive an answer."

Our Bill was referred by the Senate to the Elections Commission before which body we had a hearing March 22nd, 1912. At this hearing, Miss Winsor refused to give up part of her time to Dr. Shaw for rebuttal and Dr. Shaw said that she felt she had two foes to fight instead of one.

On June 10th, Mrs. Price wrote to Miss Winsor the following letter:

"My dear Miss Winsor:

The following resolution was passed unanimously by the Executive Board at its regular monthly meeting held June 6th, 1912  
Whereas, believing that the platform of the Pennsylvania Limited Suffrage League is inimical to that of the Pennsylvania Woman Suffrage Association, and that, by confusing the minds of the



Nov 11, 1912

# PENNSYLVANIA WOMAN SUFFRAGE ASSOCIATION

ORGANIZED 1869

AUXILIARY TO THE NATIONAL AMERICAN WOMAN SUFFRAGE ASSOCIATION

PRESIDENT, ELLEN H. E. PRICE, 3316 ARCH STREET, PHILADELPHIA, PA.

VICE-PRESIDENT, ANNA M. ORME, WAYNE, PA.

CORRESPONDING SECRETARY, CAROLINE KATZENSTEIN,  
208 HALE BUILDING, PHILADELPHIA, PA.

STATE MEMBER OF THE EXECUTIVE COMMITTEE OF THE  
NATIONAL AMERICAN WOMAN SUFFRAGE ASSOCIATION

JANE CAMPBELL, 413 WEST SCHOOL HOUSE LANE, GERMANTOWN, PA.

RECORDING SECRETARY, MARY C. MORGAN,  
4418 OSAGE AVENUE, PHILADELPHIA, PA.

TREASURER, MATILDA ORR HAYS,  
516 REBECCA STREET, WILKINSBURG, PA.

AUDITORS { MRS. ROBERT D. COARD,  
6334 HOWE STREET, PITTSBURG, PA.  
ELLEN L. THOMAS, NORRISTOWN PA.

STATE HEADQUARTERS, 208 HALE BUILDING,  
COR. JUNIPER AND CHESTNUT STREETS, PHILADELPHIA, PA.

(3)

Member of Committee on Membership of the S.A.W.S.A.

**REPEL**

people it tends to weaken the forces for Woman Suffrage,

Be it resolved, That this Executive Committee request the Pennsylvania Limited Suffrage League, through its President, Miss Mary Winsor, to withdraw its Bill for a Limited Suffrage now in the hands of the Elections Commission and refrain from presenting any a similar bill to the coming Legislature.

Hoping that your association will see the wisdom of such a course and will join forces with us in the effort to secure Votes for Women before pushing your propoganda for a limited suffrage for both men and women, I am

Very sincerely yours,  
(Signed) Ellen H. E. Price, President."

Since this letter to you was begun, I have been called up on the 'phone by Mrs. Edward Hartshorne, Sec. of the Pa. Limited S. L., who wished to secure tickets for the Theatre Benefit that we are to have Nov. 4th. During the conversation, which was a perfectly friendly one, Mrs. Hartshorne mentioned the fact that we will not let her League join the State. (This is to prove that they realize that the State Association has denied them membership and to point out to you our own position if the National should take a different course.) Again, at the Mass Meeting, Oct. 21st of this year, when Mrs. Penfield spoke for the W. Suffrage Party, Miss Winsor was asked to sit on the platform and gladly accepted the invitation. I mention these facts to show that we like Miss Winsor and consider her a very bright and capable person and that there is no personal feeling in the stand that we are taking towards her League. We are simply ~~was~~ acting for what we think is the good of the cause in our State.

Please forgive this hurried letter and its many mistakes. It has been written under the most trying circumstances and with frequent interruptions.

Yours very sincerely,

*Caroline Katzenstein*

"Go far all sharing the privileges of the government who assist in bearing its burdens, by no means excluding women."  
---Abraham Lincoln.

## Kansas Equal Suffrage Association

Lucy B. Johnston, President, Topeka  
Ella M. Evans, Corresponding Secretary, 1318 Buchanan, Topeka  
Stella H. Stubbs, First Vice Pres., Topeka. Cora W. Bullard, Second Vice Pres., Tonganoxie  
Helen N. Eacker, Rec. Sec., Lawrence. Sarah A. Thurston, Treas., Topeka. Sallie Lindsay White, Auditor, Emporia

### DISTRICT PRESIDENTS

First.—Cora W. Bullard, Tonganoxie  
Second.—Genevieve H. Chalkley, Lawrence  
Third.—Magdalen B. Munson, Pittsburg  
Fourth.—Mrs. H. C. Wirick, Yates Center  
Fifth.—Matie E. Kimball, Manhattan  
Sixth.—Lizzie W. Smith, Stockton  
Seventh.—Minnie J. Grinstead, Liberal  
Eighth.—Minerva C. Babb, Wichita



### HONORARY VICE PRESIDENT

Lillian M. Mitchner, Topeka

### COMMITTEES

Press, Catherine A. Hoffman, Chairman, Enterprise  
Membership, Alberta L. Corbin, Ph. D., Chairman, Lawrence  
Education, Effie Graham, Chairman, Topeka  
Finance, Pansy M. Clark, Chairman, Rosedale

Topeka, Kan., Nov. 1, 1912.

Miss Laura Clay,  
189 North Mill St.,  
Lexington, Ky.

My dear Miss Clay:

We were delighted to get your letter of Oct. 28, and I note with interest the changes made in the official board of the Kentucky Equal Rights Association. I know you must have felt in making the change something like the mother does who puts her child in the care of another. You seem to have almost as strenuous times upon your arrival at home, as we are having now at Headquarters. I wish you could step in and just see for one minute how busy we are this week. Only four days off. Yesterday morning a cool rain and snow storm drove all of our automobiles in. Mrs. Brandenburg and Billy, Mrs. Thurston and Mrs. Evans were out in one party, and had to come home from Osage City by train. Two other parties were in different parties of Shawnee county, and of course, all over the state, and the trouble was the same. You warned us that we would nowise escape the experience of other campaign states with the bad interest, and that is the matter which is concerning us most now, as we have got on to the work of Mr. Clarence True Wilson, who worked with the anti-suffragist this summer in Oregon, as he did several years ago in the campaign there. We discovered a plot to use his literature here. I will enclose

some of our letters, and later will try to explain to you further regarding this work. Three of us worked at Headquarters until one o'clock last night and then slept in one of the offices. Of course, having made arrangements with Mr. Mills, the proprietor of the building, and the doctor, in whose office we were.

Hope you may hear us shouting for victory on November 6.

Yours with much love,

*Lucy B. Martin*  
President K.E.S.A.

MRS. CARRIE CHAPMAN CATT, HONORARY CHAIRMAN  
MISS MARY GARRETT HAY, CHAIRMAN  
MRS. MARTHA WENTWORTH SUFFREN, VICE-CHAIRMAN  
MRS. THOS. B. WELLS, SECRETARY  
MRS. MARGARET CHANLER ALDRICH, TREASURER



## WOMAN SUFFRAGE PARTY OF THE CITY OF NEW YORK

A UNION FOR POLITICAL WORK OF EXISTING  
EQUAL SUFFRAGE ORGANIZATIONS

HEADQUARTERS  
30 EAST 34TH STREET  
SOUTHWEST CORNER MADISON AVENUE  
TELEPHONE 6390  
6391 MADISON SQUARE

MANHATTAN BOROUGH  
Mrs. JAMES LEES LAIDLAW, CHAIRMAN  
BRONX BOROUGH  
Mrs. ARCHIBALD C. FISK, CHAIRMAN  
BROOKLYN BOROUGH  
Mrs. EDWARD H. DREIER, CHAIRMAN  
QUEENS BOROUGH  
Mrs. ALFRED J. ENO, CHAIRMAN  
RICHMOND BOROUGH  
Mrs. WILLIAM G. WILLCOX, CHAIRMAN

NEW YORK,

Nov. 1, 1912.

Miss Laura Clay,  
189 N. Mill St.,  
Lexington, Kentucky.

Dear Miss Clay:-

Mrs. Carrie Chapman Catt is returning to her own country after a circuit of the globe. Her journey was undertaken to carry the gospel of equal rights into every land where women are oppressed. Her efforts have met with wonderful success. Her tour has been a sort of triumphal procession; she has been feted and honored by the dignitaries of all lands. We are eager to greet her, and to hear all that has been accomplished.

The Woman Suffrage Party was founded by Mrs. Catt, and it is one of her greatest achievements. Our organization intends to give Mrs. Catt a welcome that shall be worthy of her. We shall get together in Carnegie Hall for this purpose on November 19th, at promptly 8 o'clock. All friends of equal suffrage throughout the United States are invited to be present, bearing greetings from the organizations to which they belong.

Can you be with us, or others from your State? Let us know soon, as the time is short. The date, November 19th, is convenient for many who will be going to the National American Women's Suffrage Association Convention in Philadelphia, November 21st.

Sincerely yours,

*Mary G. Hay*

Chairman.

*Harriet Wells*

Secretary.

# NEW YORK STATE WOMAN SUFFRAGE ASSOCIATION

President, HARRIET MAY MILLS  
926 West Genesee Street, Syracuse

Vice-President-at-Large, MRS. WILLIAM L. COLT  
Bronxville

Recording Secretary, MRS. NICOLAS SHAW FRASER  
Genesee

Corresponding Sec'y, MRS. ROXANA B. BURROWS  
Andover

Treasurer, MRS. WILLIAM M. IVINS  
55 East 25th Street, New York

Auditors, { MRS. HENRY VILLARD  
540 Park Ave., New York  
MRS. DEXTER P. RUMSEY  
742 Delaware Ave., Buffalo

HEADQUARTERS, 180 MADISON AVE., NEW YORK

Nov. 1, 1912.

Miss Laura Clay,  
Lexington, Ky.

Dear Miss Clay:

Yours of the 30th is just at hand. I am enclosing my vote on the various leagues which have applied for membership. I think it is a great mistake to admit leagues of which we know nothing right on the eve of the National Convention when there is no time to investigate them. I think also that our treasurer has no right to accept dues from a league which our committee has not voted upon and admitted into the association. The main object of the societies joining the National should not be to get a vote at the Convention. They should apply in time to be investigated, and ~~I think~~ belong a year before they have a vote. I do not see how we can admit any limited suffrage association. If Miss Winsor's only limitations are criminology and education, I do not consider it a limited league. In my mind, she should drop the title "limited" before she is admitted. I understand she also had a tax qualification. ~~So long as~~ ~~the United States government excludes criminals under the~~ ~~new Federal law~~ for the future, I can see no point ~~in~~ her keeping such a title. I shall therefore vote against the admission of the Pennsylvania League.

*excludes  
illiterates*

As for Mrs Blatch's society, she has not sent the certified list of 300 members - she simply makes the statement in her letter that she has the members, but has not fulfilled the requirements of the constitution. I therefore vote "no" on the admission of her league. Since the Minnesota league seems to have fulfilled all the requirements, having sent its certified list, I vote to admit it. I cannot vote on the Oregon society and I think we should investigate them before we admit them. They seem to be local clubs. I do not think we have any right to let them in until we know more about them.

I have no desire to exclude anybody from the National Association who comes with the proper credentials and proper ~~desire~~, but so long as we have a constitution I

*purpose*

Nov. 1, 1912

2 - Miss Clay

think we should live up to it. Nor would I vote for a suspension of rules at the National Convention. I will vote for the admission of the Ohio league, since you say it has fulfilled the requirements.

I think it would be a great mistake to admit to the National, leagues which are hostile to its objects and whose policy is to break up existing organizations as far as possible. I suppose I shall be out-voted on the committee, but I believe I am right in this matter and that we are making a great mistake as a committee to admit leagues so hurriedly. If they really have the cause at heart they can ~~prepare~~ in good season, or at least wait another year before they have their vote.

apply /

Very sincerely yours,

*Harriet May Mills*

Woman's Franchise League of Indiana

816 ODD FELLOW BUILDING

DR. AMELIA R. KELLER  
PRESIDENT  
MRS. MEREDITH NICHOLSON  
VICE-PRESIDENT

MRS. FELIX T. MCWHIRTER  
VICE-PRESIDENT  
MISS HARRIET NOBLE  
TREASURER

MRS. G. M. HENDERSON  
SECRETARY  
AND BUSINESS MANAGER

Miss Laura Clay  
Lexington Ky.

Indianapolis, Indiana

Nov. 2<sup>nd</sup> / 12

My dear Miss Clay —  
Enclosed find certified list of members  
of Woman's Franchise League of Indiana,  
as per agreement sent you yesterday.  
The check for same was mailed yesterday  
to the Natl. Treasurer, as that seemed

The logical thing to do, and not bother  
you with sending it on. We are hoping  
that all requirements have been met  
and that we may be accepted in  
full affiliation and that we may, if  
possible, have representation in Natl.  
convention. Thanking you for your interest  
and suggestions. Sincerely & Fraturnly Yours.  
Mrs G M Henderson  
Secy.



# NATIONAL AMERICAN WOMAN SUFFRAGE ASSOCIATION

BRANCH OF INTERNATIONAL WOMAN SUFFRAGE ALLIANCE AND OF NATIONAL COUNCIL OF WOMEN

ANNA HOWARD SHAW  
PRESIDENT  
MOYLAN, PA.

JANE ADDAMS  
1ST VICE-PRESIDENT  
HULL HOUSE, CHICAGO, ILLS.

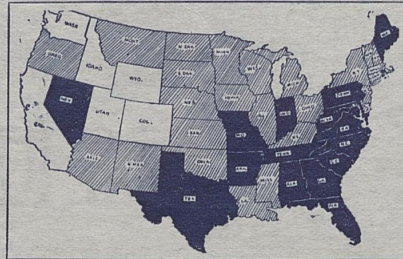
SOPHONISBA P. BRECKINRIDGE  
2ND VICE-PRESIDENT  
GREEN HALL, UNIVERSITY OF CHICAGO, ILLS.

MARY WARE DENNETT  
CORRESPONDING SECRETARY  
505 FIFTH AVENUE, NEW YORK

SUSAN W. FITZGERALD  
RECORDING SECRETARY  
585 BOYLSTON STREET, BOSTON, MASS.

COLLEGE EQUAL SUFFRAGE LEAGUE  
M. CAREY THOMAS, PRESIDENT  
BRYN MAWR, PA.

TELEPHONE, 6855 BRYANT



WHITE STATES . . . FULL SUFFRAGE  
SHADED " " . . . PARTIAL " "  
DARK " " . . . NO " "

NATIONAL AUXILIARIES  
FRIENDS EQUAL RIGHTS ASSOCIATION  
MARY BENTLEY THOMAS, PRESIDENT  
EDNOR, MARYLAND

JESSIE ASHLEY  
TREASURER  
505 FIFTH AVENUE, NEW YORK

KATHERINE DEXTER MCCORMICK  
1ST AUDITOR  
393 COMMONWEALTH AVE., BOSTON

HARRIET BURTON LAIDLAW  
2ND AUDITOR  
6 EAST 66TH STREET, NEW YORK

ALICE STONE BLACKWELL  
EDITOR OF "THE WOMAN'S JOURNAL"  
3 MONADNOCK STREET, DORCHESTER, MASS.

NATIONAL PRESS BUREAU  
CAROLINE I. REILLY, CHAIRMAN  
505 FIFTH AVENUE, NEW YORK

THE EQUAL FRANCHISE SOCIETY  
JESSICA GARRETSON FINCH, PRESIDENT  
1 MADISON AVENUE, NEW YORK

HEADQUARTERS, 505 FIFTH AVENUE, NEW YORK

November 2nd, 1912.

Miss Laura Clay,  
189 N. Mill Street,  
Lexington, Ky.

Dear Miss Clay:-

I have received, from Mrs. Blatch, the certified list of three hundred names of members of her Association and am enclosing it herewith.

Very truly yours,

*Mary Ware Dennett*

Corresponding Secretary.

*Kansas is to be congratulated on the splendid help you have given it. It surely ought to win. Here's hoping!*

*M. W. D.*

[ NOV 2, 1912 ]

Mrs. Harriet Stanton Blatch - 15 W. 91 St  
 Miss E. E. Cook 160 Waverly Place  
 Mrs. A. F. Townsend 36 W. 12 St  
 Mrs. J. W. Brauman - 11 W. 12 St  
 Caroline Lexow Nyack, N.Y.  
 Mrs. Nora B. de Forest 15 W. 91 St  
 Mrs. Edward E. Stale Schenectady, N.Y.  
 Mrs. Frederick Hazard Syracuse, N.Y.  
 Mrs. Florence Kelley 106 E. 19 St  
 Mrs. Chas. E. Knoblach - 55 St & 7 Ave - The Wyoming  
 Miss A. J. S. Perkins 959 Madison Ave  
 Mrs. John Rager, Jr 102 E. 30 St  
 Mrs. M. B. White - 308 W. 82 St  
 Miss Jennie E. White - 8 E. 9 St  
 Miss Louise E. White - 3409 Broadway  
 Dr. J. M. White - Pratt Inst - Bklyn  
 Mrs. John J. White - 1 Lexington Ave  
 Mrs. J. S. White - 620 W. 115 St  
 Miss Francis S. White - 18 Hancock St - Bklyn  
 Miss Florence E. White - 54 W. 65 St  
 Miss E. E. White - 147 W. 72 St  
 Miss Bessie R. White 97 Clark St - Bklyn  
 Miss M. H. Woodruff - 361 Stuyvesant Ave - Bklyn  
 Eleanor B. Woodruff - 38 Oxford St - Bklyn  
 Mrs. Wilson Woodrow - 46 E. 21 St  
 Miss Rose E. Young - 226 W. 97 St  
 Mary R. Young 67 W. 131 St  
 Mr. A. J. Berwilliger 24 E. 21 St

EN 502, 19123

2.

Mr. Tom H. Taylor	1111	Bergen St	Bklyn
Mrs. Taylor	226	W. 17 St	
Miss Mary Zaber	9	E. 10 St	
Mrs. M. Swartz	505	W. 143 St	
Mr. L. D. Sussman	105	Sturson St	
Miss Blanche Dingley	134	E. 25 St	
Mrs. E. R. Tiller	160	W. 96 St	
Miss Katherine Tielcke	4717	Fifth Ave.	Bklyn
Miss B. Thurston	226	W. 129 St	
Mrs. Clara Thropp	1999	Broadway	
Miss J. C. Terry	160	E. 91 St	
Mrs. Newbold Taylor	37	Madison Ave	
Mrs. Frances J. Miller	160	W. 106 St	
Mrs. R. E. Taylor	501	W 110 St	
Miss L. Taylor	417	W. 120 St	
Mrs. May B. Dalmage	65	W. 70 St	
Miss Annie Sullivan	305	W. 46 St	
Miss Rose Street	141	Attorney St	
Miss Maria J. Streat	130	W. 57 St	
Miss Grace Strachan	1308	Pacific St	Bklyn
Mrs. Belle Eddy Starrs	220	W. 69 St	
Miss M. Staly	320	McDougal St	Bklyn
Miss Pauline W. Steuber	436	Manhattan Ave	
Miss Etie Stettheimer	102	W. 76 St	
Julienne H. Strybos	419	E. 139 St	
Miss Thomas	148	Stanton St	

ENSV 2, 1912

Miss Maud Stumm - 7 W. 30 St  
 Miss Maggie Steinberg - 224 E. 13 St  
 Mr. R. H. Stearns - 71 St + Broadway  
 Mrs. Tiller 2054 Seventh Ave  
 Miss Annie Symons - 6 W. 16 St  
 Miss Nellie L. Swartz 122 Pierrepont St - Bklyn  
 Mrs. Mary Sullivan 116 W. 102 St  
 Miss Anne W. Sturges - 863 Park Ave  
 Mrs. William Stone - 418 W. 118 St  
 Mrs. Parkins Street - 423 W. 21 St  
 Mr. + Mrs. Frank L. Stratton - 158 W. 58 St  
 Mrs. G. Storratt 215 Second Ave  
 Miss Julia W. Taylor - 182 Herkimer St - Bklyn  
 Miss E. Swan 146 Madison Ave  
 Miss Helen M. Tuttle - 265 Cumbulaus St - Bklyn  
 Mrs. J. Bennett - 149 Berkeley Pl. - Bklyn  
 Miss Elizabeth W. Bennett - 16 Willoughby Ave - Bklyn  
 Miss M. W. Bennett - 964 Speene Ave - Bklyn  
 Miss Charlotte E. Benton - 246 W. 128 St  
 Mrs. Mary Benwick - 574 - 11 St - Bklyn  
 Miss Anne Benzie - 222 Claremont Ave - Bklyn  
 Miss Clara de L. Berg - 45 Brighton Ave - E. Orange, N.J.  
 Miss Emma Berg 242 W. 109 St  
 Mrs. Lillian Bergen 242 W. 43 St  
 Miss Ida Berger 11 W. 103 St  
 Miss Louisa M. Berger 11 W. 103 St

- Mrs P. W. Bergman - Leaneck Road - Ridgefield Park, N.J.  
 Miss Anne M. Berggen - 146 Madison Ave  
 Miss Elizabeth Berghold - 2840 - 7<sup>th</sup> Ave  
 Mrs. H. A. Bergman - 80 William St  
 Mr. Robert W. Bergman - Ridgefield Park  
 Miss M. Berkowitz - 57 Second Ave.  
 Miss R. Berkowitz - 543 E. 171 St  
 Miss A. O. Bernard - 18 Arlington Pl. - Brooklyn  
 Miss Florence Bernhardt - 418 E. 84 St -  
 Mrs. Gertrude A. Bernstein - 617 W. 143 St  
 Miss Florence Berningham - 202 W. 138 St  
 Dr. Jane L. Berry - 621 W. 179 St  
 Mrs. C. F. Berry - 166 W. 48 St  
 Mrs. Louise Besant - 271 - 77 St. - Brooklyn  
 Mrs. Florence C. Bethune - 125 E. 60 St  
 Miss Dorothy Bealia - 52 Jefferson St  
 Mrs. Nicholas Biddle - 102 E. 64 St  
 Miss Sarah Biddle - 1427 Madison Ave  
 Miss J. Biddleman - 234 Greene Ave Brooklyn  
 Mrs. H. H. Bier - 405 W. 118 St  
 Mrs. Sylvan Bier - Bueton Hall - 86 St & Broadway  
 Miss Catherine W. Biggerman - 381 Van Dusen St  
 Stapleton, S.D.  
 Miss C. A. Billing - 330 W. 95 St  
 Mr. Robert S. Binkerd - Bay City Club, N.Y.C.  
 Mr. C. J. Binard - 220 W. 15 St  
 Mrs. R. R. Benton - Perth Amboy N.J.

Miss Noami Birch - 537 Putnam Ave - City  
 Miss Caroline Birdsall - 130 Bloomfield Ave  
 Miss Annette Birnbaum - 157 St. Passaic, N.J.  
 Mrs. Eldon Bisbee - 60 E. 78 St.  
 Mr. Frank H. Bisell - 103 Park Ave  
 Mrs. C. H. Bisell - 422 W. 20 St.

THIS IS A LIST OF BONA FIDE PAID UP MEMBERS  
 OF THE WOMEN'S POLITICAL UNION.

Sarah Crowell  
Eleonor C. Irving  
Elizabeth Mayer

Miss Eliz A. Bliss, 145 Wilson St Brooklyn <sup>Nov. 2, 1912</sup>  
Miss Lena E. Block 216 W. 111st N. Y. City.  
Miss Gertrude Blodgett 94 Lawrence St N. Y. City  
Miss J. M. Blohm 137 Rodney St. Brooklyn  
Miss F. O. Blood, 403 W. 115th St N. Y. C  
Dr Charlotte Blum, 293 E. 10th St N. Y. C  
J. E. Whitsett 405 W. 118th St N. Y. C  
Mrs. L. B. Edwards. 601 W. 164th St N. Y. C  
Dr J. S. Edwards. 132 Halsey St Brooklyn  
Miss Mary L. Eaton 7 W. 76th St N. Y. City.  
Mrs. Max Eastman 36 Charles St. N. Y. C  
Miss Lucy O. Eastman 4 E. 70th St. N. Y. C  
Miss Anna Eastham 49 W. 9th St N. Y. C  
Miss Kathryn V. Eagan 331 E. 37th St N. Y. C  
Miss Emmeline N. Dyer 11 E. 63rd St. N. Y. C  
Miss May. Duryea. 56 William St N. Y. C

Mrs. E. D. Duryea 80 Hancock St <sup>NY 2, 1912</sup> Brooklyn  
Mrs. E. L. During 45 E 30 St N. Y. City  
Miss Ella Dunsmore 62 Wuthrop St. Brooklyn  
Miss Margaret C. Dunn 138 W. 11 St N. Y. City  
Mrs. W. R. Duncan 573 W. 159 St. N. Y. C.  
Miss Mary Duncan 541 W. 123 St. N. Y. C.  
Mrs. Francis Duncan 541 W. 123 St. N. Y. C.  
Mrs. C. R. Dunbar 511 Eighth St. Brooklyn  
Signa Dulander 119 E. 27 St N. Y. C.  
Miss Mary Duffy 128 Waverly Place N. Y. C.  
Miss Clara L. Duffy 169 E. 94 St N. Y. C.  
Miss Caroline King Duer 53 E. 56 St. N. Y. C.  
Miss Margaret Dudley 413 W. 46 St N. Y. C.  
Dr. Hubert L. Du Bois 184 Jerusalem St. N. Y. C.  
Miss Edna Drading 144 W. 104 St N. Y. C.  
Miss Astor Dracke 524 Lincoln Ave Brooklyn



Nov. 2, 1912

Miss Susan C. Woodford 13 W. 12 St N.Y.C.  
 Miss Lucy C. Woodbury 80 Willoughby St. Brooklyn  
 Miss Alice L. Woodbridge 125 Wadsworth Ave N.Y.C.  
 Mr. W. H. Wood 60 Wall St. N.Y.C.  
 Mrs. Harriet Johnson Wood. San Remo N.Y.C.  
 Mrs. G. D. Wood 1038 Sterling Place N.Y.C.  
 Miss Grace Wood 110 E. 81 St N.Y.C.  
 Miss Eva C. Wood 521 Twelfth St. Brooklyn  
 E. C. Wood 17 E. 26 St N.Y.C.  
 Miss F. J. O. Wood 420 W. 118 St N.Y.C.  
 Miss G. G. Walterbur 424 E. 9 St N.Y.C.  
 Miss Martha Wolfenkuehl 1037 Tully St. N.Y.C.  
 Mrs. M. Wolf 349 E. 17 St N.Y.C.  
 Miss Wohltman 127 W. 12 St N.Y.C.  
 Mrs. B. Woelfle 98 S. Elliot Pl. Brooklyn  
 Miss Woelfle 98 S. Elliot Pl. Brooklyn  
 Miss M. S. Wittman 46 E. 31 St N.Y.C.

Miss Katherine B. Wischku 755 Ocean Ave Brooklyn [Nov 2, 1912]  
Miss Ethel Wintthrop 223 W. 106th N. Y. C.  
Mrs. W. A. Wintthrop 576 Fourth Ave Brooklyn  
Mrs. R. G. Winslow 728 W. 181 St N. Y. C.  
Miss E. F. Wischik 476 Green Ave Brooklyn  
Miss Olga Wintsky 228 E. 13 St N. Y. C.  
Miss J. W. Wintropas 40 Lexington Ave N. Y. C.  
Miss Wincchester 1054 Sterling Place Brooklyn  
John Winstach 320 Manhattan Ave N. Y. C.  
Miss Genevieve Wilson 39 E. 31 St N. Y. C.  
Miss E. H. Wilson 537 W. 123 St. N. Y. C.  
Miss Gladys Willard 585 Park Ave Brooklyn  
Miss Zaida Williams Hotel Southern N. Y. C.  
Miss Emily B. Williams 884 Park Ave N. Y. C.

E1162 1912

Mrs. O. J. Dirken 1750 Amsterdam Ave N. Y. City  
 Miss Mary G. Dirken 1750 Amsterdam Ave N. Y. City  
 Miss Alice H. Dickinson 130 Amity St. Brooklyn N. Y.  
 Mrs. W. C. Dickey 144 E. 56 St N. Y. City.  
 Mrs. E. R. Dick 127 E. 73 St N. Y. City.  
 Mrs. Geo. S. Dixby 154 W. 57 St N. Y. City.  
 Mrs. Antoinette Blackmore 161 Woodruff Ave Brooklyn  
 Miss Elizabeth Blair 175 Claremont Ave N. Y. C  
 Miss Anne S. Blake Richmond Hill L. I.  
 Miss K. D. Blake 104 W. 84 St. N. Y. City  
 Miss Belle Blakely 157 E. 33 St N. Y. City.  
 Mrs. B. Blazie 51 W. 129 St N. Y. C  
 Miss Lucy M. Blazie 51 W. 129 St N. Y. C  
 Miss Mary Blazie 51 W. 129 St N. Y. C  
 Miss Anna G. Bluck 524 W. 122 St. N. Y. C  
 Miss Bluck 90 Trinity Place N. Y. C  
 Miss Bluck

ENR 2119123

Mrs. Rheta Childs Dorr 36 Washington Sq. W. N. Y. City  
Miss Annie L. Dorr. 22 Lefferts Place Brooklyn  
Miss Jennie Dorman. 19 E. 52 St N. Y. City.  
Miss Philippine Dopf. 155 E. 40 St. N. Y. City.  
Miss Valerie M. Dobb. 44 W. 73 St N. Y. City.  
Theresa M. Donovan. 159 W. 84 St. N. Y. City.  
Miss Mary F. Donnelly 126 W. 77 St. N. Y. City.  
Miss Evelyn Dolopp. 646 Fifty-second St. Brooklyn  
Miss Mary Doherty 16 W. 101 St N. Y. City.  
Miss Martha Dodson. 99 Madison Ave N. Y. City.  
Miss Edna B. Dodd. 177 N. Ninth St. Newark N. J.  
Miss L. L. Dock. 265 Henry St. N. Y. City.  
Rachel L. Dithridge. 42 Lorillard Place N. Y. City.  
Mr. J. J. Dingwold. 268 W. 39 St N. Y. City  
Miss Irene Dimock 29 Washington Sq W. N. Y. C  
Miss Marie Dimbeck 160 E. 110 St. N. Y. City.

NOV 1912

Miss Harriet Soule 66 Montague St Brooklyn  
 Miss Louise F. Snyder 68 Dawson St. N. Y. City.  
 Mrs. Donna Helen Smythe 976 7th St N. Y. City.  
 Miss M. M. Smith 106 E. 54th St. N. Y. City.  
 Miss E. F. Driggs 61 Pierpont St Brooklyn  
 Miss Mary Driscoll 6 Montague Terrace Brooklyn  
 Miss Dorothea Draper 18 W. 8th St N. Y. City.  
 Mrs. Wm. H. Draper 18 W. 8th St. N. Y. City.  
 Miss E. F. Draper 289 South Ave N. Y. City.  
 Mrs. M. C. Drake 200 W. 69th St N. Y. City.  
 Miss Stella C. P. Drake Hotel Margaret Brooklyn  
 Mrs. Elizabeth Dozier 54 E. 34th St N. Y. City.  
 Mr. C. Dykas 35 W. 8th St. N. Y. City.  
 Miss C. M. Douglas 255 Steuben St N. Y. City.  
 Miss Stella Doughty 39 W. 69th St N. Y. City  
 Miss Annie Doughty 39 W. 69th St. N. Y. City.

C. NY 2, 1912

Miss Martha Splome, 214 W. 69 St N. Y. City  
Miss Mabel S. Spence, 435 Greene Ave. Brooklyn  
Hon. Harold Spielberg 64 E. 7 St. N. Y. City  
Mrs. Harold Spielberg 64 E 7 St N. Y. City  
Mrs. Franklin Snyder 2754 Broadway N. Y. City  
Mrs. E. J. Smith 225 W. 109 St N. Y. City  
Mrs. Meta L. Stone 410 W. 154 St N. Y. City  
Mrs. St. Denis 157 W. 80 St N. Y. City  
Miss St. Denis 157 W. 80 St N. Y. City  
Miss Sterling 195 Claremont Ave N. Y. City  
Miss G. Leary 238 E. 48 St N. Y. City  
Miss Marion Sproul 501 W. 143 St. N. Y. City  
Miss Steiner 6 W. 103 St N. Y. City  
Mrs. Urania Stearns, 110 E. 16 St. N. Y. City  
Miss Tina Stavis 106 E. 7 St. N. Y. City  
Miss Sarah Spint 132 E. 19 St N. Y. City

EX. 2, 1913

Mrs. Alfred L. Snyder, 180 Prospect Place Brooklyn  
Miss Mary S. Sims, 180 Claremont Ave N. Y. City  
A. F. Stamouli 2420 Seventh Ave N. Y. City  
Mrs. Anna Garlin Spencer 105 E. 22 St. N. Y. City  
Mrs. M. M. Smith 101 W. 78 St N. Y. City  
Mrs. G. San Souche Broadway + 95 St N. Y. City  
Miss Beulah F. Spencer 435 Greene Ave Brooklyn  
Miss Marion Stumberger 995 Lafayette Ave Brooklyn  
Miss Esther Solomon, 181 Martuse St. Brooklyn  
Mrs. E. Hall Smith 210 Macou St. Brooklyn  
Miss Ada L. Smith, 210 E. 53 St N. Y. City  
Mrs. J. H. Smith, 229 W. 38 St. N. Y. City  
Miss Charlotte Smith 194 Jerusalem St. Brooklyn  
Miss Annie M. Sle 102 Pierpont St. Brooklyn  
Miss Margaret Stearns 238 W. 70 St N. Y. City  
Miss Lucy Stanwood 523 W. 121 St. N. Y. City

Dr. Lillian Stevenson, 145 W. 12 St N. Y. City.  
Dr. Wm. Stevens, 381 Central Park W. N. Y. City.  
Mrs. Charles G. Stevenson, 1316 Eighty-fifth St Brooklyn  
Miss Mary Stenborg, 227 E. 13 St N. Y. City.  
Miss Sarah Stevenson, 16 Court St. Brooklyn  
Miss Natalie Stewart, 238 E. 176 St N. Y. City.  
Miss K. Stevenson, 222 Lewis Ave. Brooklyn  
Mr. J. G. Phelps-Stokes, 90 Grove St. N. Y. City.  
Mrs. J. G. Phelps-Stokes, 90 Grove St. N. Y. City.  
Mrs. C. C. Stillman, 9 E. 67 St N. Y. City.  
Miss Anna H. Stewart, 104 Madison St N. Y. City.  
Miss Sarah D. Stewart, 104 Madison St. N. Y. City.  
Miss Helen I. Dickinson, 61 E. 77 St N. Y. City.  
Mrs. Gertrude Dibble, 534 W. 124 St N. Y. City  
Miss Kitty Simms, 127 Calumet St Brooklyn  
Mrs. M. Soundstrom, 101 W. 109 St N. Y. City



[Nov 21 1913]

Miss Josephine Taylor, 176 E. 125th N. Y. City.  
 Miss Jessie M. Sutherland, 429 Decatur St. Brooklyn N. Y.  
 Mrs. Harold Stone, 172 S. Oxford St. Brooklyn  
 Miss I. C. Spencer, 29 E. 29 St. N. Y. City.  
 Mrs. M. G. Smith, 1 Governor Place N. Y. City.  
 Mrs. E. O. Smith Jr., 146 Madison Ave N. Y. City  
 Miss Eva Jane Smith, 107 Madison Ave N. Y. City  
 Miss Ida Skelkinn, 117 E. 56 St N. Y. City.  
 Miss Margaret Smiley, 22 E. 10 St N. Y. City.  
 Mr. David L. Smith, 46 Graham Ave. Brooklyn  
 Mrs. M. E. Sires, 709 Lexington Ave N. Y. C.  
 Miss Adele J. Simmons, 112 E. 19 St N. Y. City.  
 Rev. Chas. P. Slicer, 156 E. 38 St N. Y. City.  
 Mrs. Chas. P. Slicer, 156 E. 38 St N. Y. City.  
 Miss Sara Stone, 49 W. 9 St. N. Y. City.  
 Mrs. Anna Stirling, 62 W. 66 St N. Y. City

[Nov 2, 1913]

Mrs. E. C. Whitman. 71 E. 77 St. N. Y. City.  
Mr. R. D. Whitney. 1 W. 34 St N. Y. City.  
Miss Jennie Whittemore, 1142 Madison Ave N. Y. C.  
Miss Sara O. White 240 W. 4 St N. Y. City.  
Mrs. Wm Strauss 20 E. 74 St N. Y. City.  
Miss Eva Stolze 6 E. 47 St N. Y. City.  
Miss H. Seitelbaum 111 E. 101 St. N. Y. City.  
Miss Grace Ellis Tipt 50 W. 93 St N. Y. City.  
Dr. G. E. Sutton. 546 W. 146 St. N. Y. City.  
Miss Irene H. Sutcliffe, 8 W. 92 St N. Y. City.  
Miss Jessie Segar, 602 W. 135 St N. Y. City.  
Miss Heila V. Stoll 56 E. 54 St N. Y. City.  
Miss Evelyn R. Smith 56 E. 54 St N. Y. City.  
Miss Harriet Silverman 1578 Lexington Ave N. Y. C.  
Miss Clarence M. Smith 331 W. 101 St. N. Y. City  
Miss Elizabeth Stewart 234 Central Park W. N. Y. C.  
Miss Gertrude Sporr. 110 Manhattan Ave N. Y. City

THE BARNES STORES.

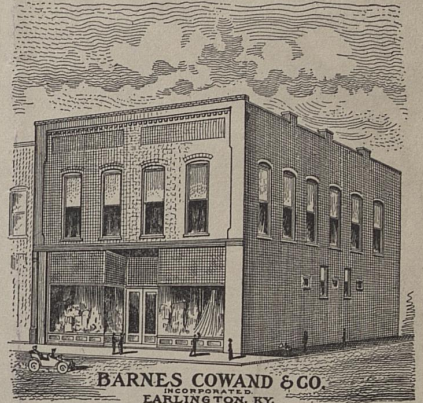


E.P. BARNES & BRO.  
BEAVER DAM, KY.



BARNES MERCANTILE CO.  
CENTRAL CITY, KY.

BEAVER DAM, CENTRAL CITY,  
AND EARLINGTON.



BARNES COWARD & CO.  
INCORPORATED  
EARLINGTON, KY.

Central City, Ky., *Nov 2* 1912

Miss Laura Clay.

Lexington Ky.

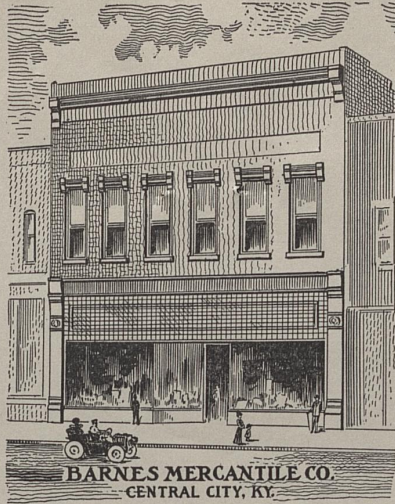
Dear Miss Clay

Two of the lawyers of the town have challenged another lady and myself for a debate on woman suffrage. While it is a little unusual for us to speak in public we feel deep down in our hearts that we should defend our side, and have accepted this call. Now as this is the first time that a woman has had courage to raise her voice on this very "touchy" subject, we feel that we are not only going to bring down the men, but a majority of the women, also upon our heads, as it were. Now our only salvation is to make our speeches strong enough to convict. We must convince them, if argument will do so that we are right, and we appeal to you to

THE BARNES STORES.



E. P. BARNES & BRO.  
BEAVER DAM, KY.



BARNES MERCANTILE CO.  
CENTRAL CITY, KY.

BEAVER DAM, CENTRAL CITY,  
AND EARLINGTON.



BARNES COWARD & CO.  
INCORPORATED  
EARLINGTON, KY.

Central City, Ky.,

191

send us all the literature you have on the subject, If you have any speeches that would please us most, we could change and add to, to suit the occasion, Now I know of no one who is better prepared to defend woman suffrage, than you, therefore I ask this favor of you - We are so anxious to do all we can for the cause - but we do not know much about preparing speeches - and will greatly appreciate any help you give us.

Thanking you in advance - I subscribe myself -

Sincerely

Mrs. E. P. Barnes.

**President,**  
Mrs. Ellen H. E. Price,  
3316 Arch St., Philadelphia, Pa.

**Vice-President,**  
Mrs. Anna M. Orme, Wayne, Pa.

**Corresponding Secretary,**  
Miss Caroline Katzenstein,  
208 Hale Bldg., Philadelphia, Pa.

**Recording Secretary,**  
Mrs. Mary C. Morgan,  
4418 Osage Ave., Philadelphia, Pa.

**Treasurer,**  
Miss Matilda Orr Hays,  
516 Rebecca Ave., Wilkensburg, Pa.

**Auditors,**  
Mrs. Robert D. Coard,  
6334 Howe St., Pittsburgh, Pa.  
Miss Ellen L. Thomas,  
Norristown, Pa.

**Field Secretary,**  
Mrs. Ida Porter-Boyer,  
Centralia, Columbia County, Pa.

**Honorary Presidents,**  
Mrs. Lucretia L. Blankenburg,  
Mrs. Rachel Foster Avery.

# Pennsylvania Woman Suffrage Association

ORGANIZED 1869

Auxiliary to the National American  
Woman Suffrage Association

## State Headquarters

207-208 Hale Building

S. W. Cor. Juniper and Chestnut Streets

PHILADELPHIA, PA.

Bell Phone, Walnut 4896

### Advisory Board.

Miss Lida Stokes Adams,  
Mr. Wilmer Atkinson,  
Prof. Earl Barnes,  
Hon. Dimmer Beeber,  
Dr. Albert P. Brubaker,  
Miss Mary A. Burnham,  
Miss Jane Campbell,  
Mr. Isaac H. Clothier,  
Bishop James H. Darlington,  
Mrs. Ella M. George,  
Rev. Carl E. Grammer,  
Miss Anne Heygate Hall,  
Rev. Frederic A. Hinckley,  
Dr. Morris Jastrow,  
Rev. Joseph Krauskopf,  
Dr. Leo S. Rowe,  
Miss Elizabeth S. Lowry,  
Mrs. Samuel Sewall,  
Dr. Joseph Swain,  
Miss M. Carey Thomas.

November 3, 1912.

Miss Laura Clay,  
Lexington,  
Kentucky.

My dear Miss Clay:

This is Sunday morning as you will see from the date of this letter. I am breaking my usual rule because I am very anxious to let you hear from me in reply to your letter of Oct. 30th and your postal card of Oct. 31st.

The enclosed letter is a copy of one that I sent immediately to the other three members of our committee---immediately on receipt of your Oct. 30th letter. I should have sent yours off at the same time if I could possibly have found time to add what I am going to add this morning. The fact that I am Local Press Chairman for the Convention in addition to my regular work, (and also because I have had to fill temporarily the position of Chairman of Literature Committee) has made it almost impossible to answer all mail at once.

We consider that Miss Winsor is not only confusing the public mind, but that she is attempting the impossible and is trying to effect what she considers a reform in the wrong way. The worst criminals are often never behind the bars, and the poor unfortunates who are imprisoned are disfranchised for a length of time considered right by the law. Should they never have another chance? Again, should not our Immigration Laws determine the kind of person who may enter our country and our Naturalization Laws the length of time necessary to become a citizen? And should not Compulsory Educational laws, coupled with proper Immigration Laws gradually eliminate the illiterate? I, like yourself, am a southerner, and know that our problem is a more difficult one than the one in the north, but I feel that it is a grave mistake to complicate our one issue---the enfranchisement of women.

I believe that if Miss Winsor finds that she must fight her fight alone, she will see the folly of it and will make the issues two instead of one. In a letter dated May 24th, 1912, to Miss Lida Stokes Adams, Chairman of our Legislative Committee, Miss Winsor writes in part: "We also wish to affiliate with the State or National.

#2---Miss Laura Clay---

"We are hesitating as to whether we shall introduce in the Legislature the bill that I enclose (which is now under consideration by the Elections Committson) or whether we shall eliminate all reference to Woman Suffrage from the bill introduce it, support it and at the same time support the Woman Suffrage bill introduced by the State Association. In that way, all those who wish Woman Suffrage could present a united front on the Woman question; while we would continue our work for restrictions on the vote separately from the Woman Suffrage work."

This part of Miss Winsor's letter is copied carefully and the underscorings, parentheses, and capitals are her own. Does that look as if "Woman Suffrage is the chief object of the League"?

(1) Now, to your questions. I vote "no" to Miss Winsor's application.

(2) I have already voted "yes" to Mrs. Blatch's application sent in through Mrs. Dennett and am very glad that they wish to join.

(3) I vote "yes" to the Minn. Equal Suffrage League (Pres. Theresa B. Peyton)

(4) As to Everybody's Equal Suffrage League of Oregon (Pres. Esther Pohl Lovejoy) and the Portland Equal Suffrage League of Oregon (Pres. Josephine Hirsde?), I do not feel that I know enough them to say which should be a State Association. If, according to your request, they show that they are properly entitled to membership in the N.A.W.S.A., I vote "yes" to admit them.

(5) To Ohio Equal Franchise Association (Pres. Flora E. Worthington) I vote "yes".

(6) When certified list of members is received and dues paid for Woman's Franchise League of Indiana (Pres. Dr. Amelia A. Keller), I vote "yes".

(7) To all eligible association whole applications were delayed on account of your absence from home on campaign work, I vote that the rules of the N.A.W.S.A. be suspended and that they be allowed to have representation at the Philadelphia Convention. I see no reason why rules should be suspended in favor of associations for whose lateness of application they themselves are responsible, but am perfectly willing to vote yes in their favor if the National Association and the other members of our committee wish it. It would, as you say, be a pity (not your words!) for representatives of a victorious State to be excluded from the convention on account of technicalities.

Yours very sincerely,

*Caroline Katzenstein*

Steam Heat

25 Rooms with Bath  
Hot and Cold Running Water in Each Room  
Long Distance Phone in Each Room

Electric Light



DINGLE BROS.  
PROPRIETORS

RATES \$2 TO \$3 PER DAY

MOBERLY, MO., Nov. 4, 1912.

My dear Miss Clay,

It was splendid of you to write so promptly and so fully. Please do me the great kindness of suggesting some one who would be willing to manage a lecture-tour for me through Kentucky for one or two months next Spring.

I would be the happiest of souls if I could persuade a lady of fine executive ability and good social position to undertake that work for me. I am very anxious to know the people of Ky. better. I have been in that state so seldom to speak.

ALL ROOMS VACUUMIZED DAILY

Steam Heat

25 Rooms with Bath  
Hot and Cold Running Water in Each Room  
Long Distance Phone in Each Room

NOV. 4, 1917

Electric Light



DINGLE BROS.  
PROPRIETORS

RATES \$2 TO \$3 PER DAY

MOBERLY, MO., ..... 191

I can not attend the Natl. Convention at Philadelphia. It is far away, and I have only recently returned from a fifteen months' lecture-tour in the far West. I hope that you may be able to bring the Convention farther South next year.

I do trust that you will win gloriously in Kentucky. If you ever need me, send for me. I love the woman suffrage work better than anything on earth; and I long to help it on to triumph in the U. S. and elsewhere.

ALL ROOMS VACUUMIZED DAILY



Steam Heat

25 Rooms with Bath  
Hot and Cold Running Water in Each Room  
Long Distance Phone in Each Room

Nov 4, 1912  
Electric Light



MOBERLY, MO.,.....191

Until Dec., my address  
will be: Wellsville, Mo.,  
of Mrs. Esmeralda Blackwell.  
After that, my dear home,  
Balfour, Miss.

With best  
wishes for you personally,  
dear Miss Clay, I am,  
Yours cordially,  
Belle Keowney.

ALL ROOMS VACUUMIZED DAILY

## The Just Government League of Maryland

817 NORTH CHARLES STREET  
BALTIMORE, MD.

### VOTES FOR WOMEN

#### OFFICERS

PRESIDENT, MRS. DONALD R. HOOKER, "CEDAR LAWN," STATION H, BALTIMORE  
FIRST VICE-PRESIDENT, DR. MARY SHERWOOD, THE ARUNDEL  
SECOND VICE-PRESIDENT, MISS EDITH HAMILTON, BRYN MAWR SCHOOL  
CORRESPONDING SECRETARY, DR. FLORENCE SABIN, JOHNS HOPKINS MEDICAL SCHOOL  
RECORDING SECRETARY, MISS MARGARET T. CAREY, 509 CATHEDRAL STREET  
TREASURER, MRS. FRANK F. RAMEY, 1318 LINDEN AVENUE

#### EXECUTIVE COMMITTEE

MISS JULIA R. ROGERS, HOTEL BELVEDERE  
MISS MARY E. LENT, 1123 MADISON AVENUE  
MISS ELIZABETH G. TAYLOR, 511 CALVERT BUILDING  
MISS MARGARET S. WEIR, 312 ST. PAUL STREET  
MRS. CALVIN N. GABRIEL, 2413 ST. PAUL STREET  
MISS SARAH MARTIN, 1423 FIDELITY BUILDING  
MRS. CHAS. J. KELLER, 222 W. MONUMENT STREET  
MISS ELLEN LAMOTTE, 1123 MADISON AVENUE  
MRS. B. J. BYRNE, ELLICOTT CITY, MD.  
MISS BERTHA TRAIL, FREDERICK, MD.  
MRS. LEPAGE CRONMILLER, LAUREL, MD.  
MRS. HENRY E. RAMSDALL, DENTON, MD.  
MRS. NEVIN COLLIER, SALISBURY, MD.  
MRS. ROBERT MOSS, ANNAPOLIS, MD.  
MRS. J. WILSON MOORE, FALLSTON, MD.  
MRS. OSCAR WOLFF, REISTERSTOWN PIKE

November 6th, 191<sup>1</sup>~~2~~.

Dear Madam:-

The Just Government League of Maryland is prepared to furnish you with an unlimited supply of Suffrage Christmas seals and post cards like the enclosed. The seals sell to Suffrage organizations at 75 cents per hundred to retail at one cent each, and the post cards sell at ninety cents per hundred to retail at three for five cents. We also have on hand a supply of window cards printed on paper, which can be forwarded by mail, to be used to advertise the sale of the Suffrage seals. We hope that the Suffrage organizations will push the sale of the Christmas seals vigorously, and so help to put money in their own Treasuries and advertise Suffrage at the same time.

Kindly send all orders for the seals and cards to  
Mrs. John G. Wilson, 817 N. Charles Street, Baltimore, Md.

Faithfully yours,

*Edith Houghton Hooker*  
President.

Mrs. Donald R. Hooker.

# National American Woman Suffrage Association

(Member National Council of Women and International Woman Suffrage Alliance)

President, Rev. Anna Howard Shaw, Moylan, Pa.  
First Vice President, Rachel Foster Avery, Swarthmore, Pa.  
Second Vice President, Florence Kelley,  
105 East 22nd Street, New York City.  
Corresponding Secretary, Kate M. Gordon,  
1800 Prytania Street, New Orleans, La.



NATIONAL HEADQUARTERS  
Warren, Ohio

Recording Secretary, Alice Stone Blackwell,  
6 Beacon Street, Boston, Mass.  
Treasurer, Harriet Taylor Upton, Warren, Ohio.  
Auditors: { Laura Clay, 189 N. Mill St., Lexington, Ky.  
Ella S. Stewart, 5464 Jefferson Ave., Chicago, Ill.

189 N. Mill St., Lexington, Ky.

Nov. 7th, 1912.

Mrs. Theresa B. Peyton, Pres. Minnesota Equal Suffrage League,  
St. Paul, Minn.

Dear Madam,

I am pleased to write that the application for auxiliaryship to the N.A.W.S.A. from the Minnesota Equal Suffrage League has received an affirmative vote from the majority of the Membership Committee. I have not heard from two members of the Committee; but as no objection was raised by the three who responded promptly, and as the Philadelphia Convention is so near at hand, I have accepted the application without waiting for the other two votes.

Hoping your League will be represented at Philadelphia, and help in the great rejoicing for our victorious states, I am

Very truly yours,

Chairman of N.A.W.S.A. Membership Committee.

# National American Woman Suffrage Association

(Member National Council of Women and International Woman Suffrage Alliance)

President, Rev. Anna Howard Shaw, Moylan, Pa.  
First Vice President, Rachel Foster Avery, Swarthmore, Pa.  
Second Vice President, Florence Kelley,  
105 East 22nd Street, New York City.  
Corresponding Secretary, Kate M. Gordon,  
1800 Prytania Street, New Orleans, La.



NATIONAL HEADQUARTERS  
Warren, Ohio

Recording Secretary, Alice Stone Blackwell,  
6 Beacon Street, Boston, Mass.  
Treasurer, Harriet Taylor Upton, Warren, Ohio.  
Auditors: { Laura Clay, 189 N. Mill St., Lexington, Ky.  
Ella S. Stewart, 5464 Jefferson Ave., Chicago, Ill.

189 N. Mill St., Lexington, Ky.

Nov. 7th, 1912.

Mrs. G. M. Henderson, Sec'y Woman's Franchise League of Indiana,

816 Odd Fellow Building, Indianapolis.

Dear Madam,

Upon the receipt of your certified list of 300 members and your statement that dues for this number had been sent to the National treasurer, a majority of the Membership Committee of the N.A.W.S.A. has given an affirmative vote to the application of the Woman's Franchise League of Indiana to auxiliaryship in the N.A.W.S.A. I have not had an answer from two of the Committee; but as the time is now so short before the Philadelphia convention I have thought it best to acquaint you with the vote of the majority.

It is not in the power of the Committee to promise that your delegates will have a right to vote in the National Convention, and as your application was sent too late, I do not think the convention would give a unanimous vote (which is the only one which could suspend the constitution) to give your delegates votes. But I feel assured that they would be assigned seats on the floor, with the privileges of discussion; and as this will be a most interesting convention, having many victories to celebrate, I hope your delegation will not be less full on account of the constitutional limitations on your privileges.

Hoping to see you at Philadelphia, I am very truly yours,

Chairman of Committee on Membership of N.A.W.S.A.

# National American Woman Suffrage Association

(Member National Council of Women and International Woman Suffrage Alliance)

President, Rev. Anna Howard Shaw, Moylan, Pa.  
First Vice President, Rachel Foster Avery, Swarthmore, Pa.  
Second Vice President, Florence Kelley,  
105 East 22nd Street, New York City.  
Corresponding Secretary, Kate M. Gordon,  
1800 Prytania Street, New Orleans, La.



NATIONAL HEADQUARTERS  
Warren, Ohio

Recording Secretary, Alice Stone Blackwell,  
6 Beacon Street, Boston, Mass.  
Treasurer, Harriet Taylor Upton, Warren, Ohio.  
Auditors: { Laura Clay, 189 N. Mill St., Lexington, Ky.  
Ella S. Stewart, 5464 Jefferson Ave., Chicago, Ill.

189 N. Mill St., Lexington, Ky.

Nov. 7th, 1912.

Mrs. Harriet Stanton Blatch,

15 W. 91 St., New York, N.Y.

My dear Mrs. Blatch,

It gives me pleasure to announce that the application for auxiliaryship to the N.A.W.S.A. from the Women's Political Union has received a majority vote from the Membership Committee of the N.A.W.S.A. on receipt of your certified list of three hundred members. Most of the applicants for membership have sent a list certified before a notary. It may be, if objections arise because yours has not been so certified, that we shall have to ask that yours be so certified. In the meanwhile, we accept it as sufficient.

I have received no vote from Mrs. Huntley Russell; but from the news which has come to us of victory in Michigan we can all excuse her as having even more important business to attend to.

I hope you sent dues to Miss Ashley in time before the constitutional limit. With that our Committee has nothing to do.

Hoping to see you at the National Convention, I am

Very truly yours,

N.A.W.S.A.

Chairman of Membership Committee of

# Kentucky Equal Rights Association

"If Ye Abide in My Word \*\*\* Ye Shall Know the Truth,  
and the Truth Shall Make You Free."

President, ~~Miss Emma Clay,~~  
**Linden Walk,**  
189 N. Mill St., Lexington  
First Vice-President, ~~Mrs. Mary B. Clay, Richmond~~  
Second Vice-President, Mrs. Mary C. Cramer, Lexington  
Third Vice-President, Mrs. N. S. McLaughlin, Covington

Corresponding Secretary, ~~Mrs. Mary C. Roark, Richmond~~  
**Miss Laura Clay,** Lexington  
Recording Secretary, Mrs. Emma M. Roebuck,  
112 W. Front St., Newport  
Treasurer, ~~Mrs. Isabelle H. Shepard~~  
3 E. Twelfth St., Covington



189 N. Mill St., Lexington, Ky.

Nov. 8th, 1912.

Hon. Frank Peak,

Louisville, Ky.

Dear Judge Peak,

Information has reached this Association that you have offered to help us in our endeavor to get submitted by the next Legislature a Constitutional Amendment striking out the word "male" in the Suffrage and Elections clause.

Please accept our thanks for your promised help, and our grateful acceptance of your offer.

Very sincerely yours,

Corresponding Secretary of the  
Kentucky Equal Rights Association.

# National American Woman Suffrage Association

(Member National Council of Women and International Woman Suffrage Alliance)

President, Rev. Anna Howard Shaw, Moylan, Pa.  
First Vice President, Rachel Foster Avery, Swarthmore, Pa.  
Second Vice President, Florence Kelley,  
105 East 22nd Street, New York City.  
Corresponding Secretary, Kate M. Gordon,  
1800 Prytania Street, New Orleans, La.



NATIONAL HEADQUARTERS  
Warren, Ohio

Recording Secretary, Alice Stone Blackwell,  
6 Beacon Street, Boston, Mass.  
Treasurer, Harriet Taylor Upton, Warren, Ohio.  
Auditors: { Laura Clay, 189 N. Mill St., Lexington, Ky.  
Ella S. Stewart, 5464 Jefferson Ave., Chicago, Ill.

not received the requisite number of affirmative votes.

Very sincerely yours,

Nov. 8th, 1912.

Miss Mary Winsor,

Haverford, Penn.

Chairman of Membership Com-

mittee of N.A.W.S.A.

I have not yet received votes from all the members of the Membership Committee on recent applications, including that from the Penn. Limited Suffrage League, though I asked for a prompt reply. In the letters I have received, however, there is expressed a strong opposition to the limitations for which your League is working. I must confess myself that I read your bill sent me so hurriedly, because I have been oppressed with work since my return, that I did not observe that you are working for a tax qualification. If I had observed that, I would not have promised my vote for admission, as that is against my principles; is without precedent, as far as I know, in the United States, and has been admitted to be contrary to the principles of the N.A.W.S.A., as was made clear when the Asso. would not support the Oregon Amendment offered in 1910, asking for suffrage for women on a very slight property qualification. I have no objections to an educational qualification where states provide public schools; and while I believe you are working for a practical impossibility for a disfranchised class, when as disfranchised women you ask legislators to disfranchise voters on your re-

quest, I was willing for you to find that out by your experience, if you cared to exercise yourself in that direction.

But I am really very desirous that your League should be officially recognized at the Philadelphia convention, which is to be such a glorious celebration of victories. Therefore, I am writing before I hear from all my members (I doubt if all will answer at all) to say that I do not believe your application will be accepted on your present basis, and to ask if it is possible that your League will make such alterations <sup>in your constitution</sup> as will remove the obstacles to auxiliaryship in the National.

At the time of your application the success of the suffrage movement was not shortly assured in the United States; but since the elections I believe all of us must be hopeful that success will crown the efforts of all the states within about ten years. Is it not reasonable, then, that your League should ~~make~~ bend its efforts to securing suffrage for women on the basis men are now admitted (or possibly with a simple educational qualification) and after women have a vote, then to unite on equal terms with men in asking for further improvements on the franchise? If you do not yield on the points of difference, points which other earnest workers consider involve difficult if not impossible issues, your League will practically have no part in the final victory, except such educational agitation as you may make. But if at this critical time all the friends of woman suffrage present an undivided front all will assist materially in obtaining the one supreme right of citizenship, and ~~will~~ may afterwards divide amicably on these mooted points.

I am aware that it is not within my official province to make these suggestions, and you need not feel that courtesy requires you to answer this letter. If you care to make concessions to the objections of the Committee you might send me a night letter; or you might come to see me on my arrival at Hotel Walton, which I expect to be on the evening of Nov. 20th. In the meanwhile, you will understand that your application has  
(Over)



# NATIONAL AMERICAN WOMAN SUFFRAGE ASSOCIATION

MEMBER OF INTERNATIONAL WOMAN SUFFRAGE ALLIANCE AND OF NATIONAL COUNCIL OF WOMEN

ANNA HOWARD SHAW  
PRESIDENT  
MOYLAN, PA.

JANE ADDAMS  
1ST VICE-PRESIDENT  
HULL HOUSE, CHICAGO, ILLS.

SOPHONISBA P. BRECKINRIDGE  
2ND VICE-PRESIDENT  
GREEN HALL, UNIVERSITY OF CHICAGO, ILLS.

MARY WARE DENNETT  
CORRESPONDING SECRETARY  
505 FIFTH AVENUE, NEW YORK

SUSAN W. FITZGERALD  
RECORDING SECRETARY  
585 BOYLSTON STREET, BOSTON, MASS.

JESSIE ASHLEY  
TREASURER  
505 FIFTH AVENUE, NEW YORK

BELLE C. LA FOLLETTE  
1ST AUDITOR  
1846 WYOMING AVENUE, WASHINGTON, D. C.

HARRIET BURTON LAIDLAW  
2ND AUDITOR  
6 EAST 66TH STREET, NEW YORK

ALICE STONE BLACKWELL  
EDITOR OF "THE WOMAN'S JOURNAL"  
3 MONADNOCK STREET, DORCHESTER, MASS.

COLLEGE EQUAL SUFFRAGE LEAGUE  
M. CAREY THOMAS, PRESIDENT  
BRYN MAWR, PA.

NATIONAL AUXILIARIES  
FRIENDS EQUAL RIGHTS ASSOCIATION  
MARY BENTLEY THOMAS, PRESIDENT  
EDNOR, MARYLAND

THE EQUAL FRANCHISE SOCIETY  
JESSICA GARRETSON FINCH, PRESIDENT  
1 MADISON AVENUE, NEW YORK

NATIONAL PRESS BUREAU  
CAROLINE I. REILLY, CHAIRMAN  
505 FIFTH AVENUE, NEW YORK

TELEPHONE, 6855 BRYANT



HEADQUARTERS, 505 FIFTH AVENUE, NEW YORK

189 N. Mill St., Lexington, Ky.  
Nov. 9th, 1912.

Mesdames Esther Pohl-Lovejoy, Josephine Hirsde, Helen Gillespie & Sarah Whiteside, Portland, Oregon.

Dear Ladies,

Your letters of Oct. 2nd, applying for membership in the N.A.W.S.A. for Everybody's Suffrage League of Oregon and Portland Equal Suffrage League of Oregon reached me after much delay on account of my absence in Kansas.

As soon after my return home as I could I sent on your application to the members of my Committee on Membership. I have not yet had a vote from all the members; but those who have replied think we have not enough information to give an intelligent vote.

Your letters are not explicit enough on these points:

(1) Do both of these League propose to act as State Leagues? If so, what is the object in so doing? There is a difference made between local societies and State societies by the constitution of the N.A.W.S.A. I suppose you have the last minutes, - that is, of the convention in Louisville. The local societies which are auxiliary have but one member of the National Ex/ Committee.

(2) Have your Leagues been auxiliary to the present Oregon Suffrage Association, auxiliary to the National, of which Mrs. Duniway is president? If so, why are your Leagues seeking separate auxiliaryship? They are not eligible "unless they have been refused auxiliaryship in their States". (see Constitution).

(3) A certified list of at least three hundred members must be furnished to the Membership Committee.

(4) Dues for at least three hundred members of second ~~auxiliary~~ associations in a state must be sent to the National treasurer. To secure representation in the National Convention these dues must be sent at least four weeks before the convention. This year the convention meets in Philadelphia Nov. 21 to 26 inclusive.

Do you expect to have delegates at the Philadelphia Convention? As our latest information is that Oregon has won the Suffrage Amendment representation from your state is earnestly desired, as we all wish to rejoice with you. If, therefore, you can answer the above points satisfactorily, our Committee will be glad to vote affirmatively on your application; and even do what we can to have it accepted as on time, see the delay resulted from my absence.

In any case, we hope your delegates will not be deterred from coming to the Convention, as they will be joyfully welcomed, and given every opportunity to enjoy the occasion, even if technicalities should prevent

[Nov. 9, 1912]

2.

their having a vote in the Convention.

I have no supply of the minutes for distribution; but in case you have none on hand, I am enclosing the only copy I have of the rules of the Membership Committee and extracts from the Constitution relating to its business. If you have the minutes, you will find these rules on page 195 and the Constitutional requirements on page 204, Article III, Sections 1 and 4.

Hoping these points concerning which the Committee has not sufficient information may be satisfactorily elucidated, and that a full delegation from Oregon will be present at the Philadelphia Convention,

I am

Very truly yours,

Chairman of Membership Committee of

N.A.W.S.A.

# National American Woman Suffrage Association

(Member National Council of Women and International Woman Suffrage Alliance)

President, Rev. Anna Howard Shaw, Moylan, Pa.  
 First Vice President, Rachel Foster Avery, Swarthmore, Pa.  
 Second Vice President, Florence Kelley,  
 105 East 22nd Street, New York City.  
 Corresponding Secretary, Kate M. Gordon,  
 1800 Prytania Street, New Orleans, La.



NATIONAL HEADQUARTERS  
 Warren, Ohio

Recording Secretary, Alice Stone Blackwell,  
 6 Beacon Street, Boston, Mass.  
 Treasurer, Harriet Taylor Upton, Warren, Ohio.  
 Auditors: { Laura Clay, 189 N. Mill St., Lexington, Ky.  
 Ella S. Stewart, 3464 Jefferson Ave., Chicago, Ill.

Lexington, Ky.  
 Nov. 9th, 1912.

My dear Miss Backer,

I received your kind letter recently, but have been too busy to answer any except letters which imperatively required it. I have rejoiced over the victory in Kansas! I hoped all the time, but was never confident; and even now I look at the papers every day to have the good news confirmed. Thank you for the press clippings, which are just the things I want.

I answered your inquiries about my homeward expenses to Mrs. Thurston, and have sent her a receipt in full. Now that Kansas has done the whole country the service of passing the amendment I feel that I am like others, greatly indebted to the noble Kansas women who have made this great advance possible.

I am enclosing a letter which is directed to me; but which you must answer, if you have the necessary leaflets.

I am not able to tell you at all how many miles I travelled or how many towns I visited, as I left all those particulars to the ladies who travelled with me. But after Mrs. Smith left me I have kept an imperfect account till Mrs. Johnston joined me again. Perhaps the railroad fare will indicate to you the miles travelled.

I see my first note is from Lindsborg to McPherson,-----	30 cents.
To Hutchison	55 "
To Harper	1.24
To Kiowa	66
To Wichita	1.72
To Emporia	2.00
To Topeka,	1.24

There Mrs. Johnston joined me; and I kept no more account till	
I took train from Atchison to Leavenworth -----	42
To Kansas City on trolley car	50

Our women voted for the first time for School Board on Nov. 5th. I worked all day at the polls, and we had the triumph of electing the Board preferred by us. All the men are much pleased with the women's work, and the day was one of perfect quiet, - not an arrest the whole day. This election makes a fine argument for full suffrage, and I believe the people think so. We are going on right ahead to ask for a submission from our next Legislature; and with the victories of this election in four states I am hopeful of success.

I shall always remember with pleasure my time in Kansas, the fine people I met, and the good friends I hope I made. I trust I shall see some of them at Philadelphia.

Tell Mrs. Johnston I appreciated her telegram giving me the good news first of the Kansas victory.

Please give my kind regards to all my good suffrage friends, and believe me

Very cordially yours,

Chairman of Southern Committee

## "Votes for Women"

We demand for women the full franchise, with restrictions excluding the criminal and illiterate of both sexes

### The Pennsylvania Limited Suffrage League.

RECORDING SECRETARY  
MRS. IMOGEN B. OAKLEY

CORRESPONDING SECRETARY  
AND TREASURER  
MRS. EDWARD YARNALL HARTSHORNE  
MERION P. O., PA.

PRESIDENT  
MISS MARY WINSOR, HAVERFORD, PA.

VICE-PRESIDENTS  
MRS. JOHN READ PETTIT      MRS. OSWALD CHEW  
MRS. RUSSELL DUANE      MRS. JOHN SCOLLAY  
MISS ELIZABETH MCKEAN RHODES

ADVISORY BOARD  
MRS. JOSEPH P. MUMFORD  
MRS. RICHARD PETERS  
MISS ANNE HOLLINGSWORTH WHARTON  
MRS. JAMES D. WINSOR  
MRS. S. BURNS WESTON  
MRS. OTIS SKINNER

Nov. 10<sup>th</sup>

1912.

My dear Miss Clay: In reply to your letter of Nov. 8.  
let me say that the Limited Suffrage League is not  
working for a tax qualification. That qualification  
is already in the Penna. Constitution. Our bill is  
misleading in its wording. Those familiar with the Penna.  
Constitution know that the poll tax is already in the  
required. Our bill makes no change in that respect. We  
have never advocated a tax-paying qualification, as we don't like it.  
The Limited Suffrage League is considering the advis-  
ability of supporting the Woman Suffrage bill to be  
introduced in the Legislature next January by the  
Penna. State U.S. As. I think I can safely promise  
you that and in that case, I don't see why we should  
not be admitted at once to the National.  
We will continue our propaganda for Limited Suffrage in what  
ever ways seem advisable; we are bound to work for restrictions as  
some of our members are opposed to universal suffrage though  
not to Woman Suffrage.

They would be, however, willing to support the Woman  
Suffrage <sup>bill</sup> if we remain true to our pledges for Limited  
Suffrage. We may, for instance, introduce a bill  
providing merely for restrictions on the vote without  
any mention of Woman Suffrage. This would enable  
us to carry out our pledges for Limited Suffrage without  
conflicting with the Woman Suffrage bill which we could  
support. In that case, we could work with the other Suffra-  
gists for their bill and keep up our own work at the same  
time. I expect to attend a Committee meeting of the  
Officers of the Limited League this afternoon, if they  
are willing to pledge themselves and the League to support  
the W.S. bill in future. I don't see why we can't be admitted  
at once.

As for asking us to drop our work for ~~rather~~ Limited  
Suffrage, it is about as reasonable as to ask the Friends'  
Equal Rights Ass. to cease being Friends and work only  
for Woman Suffrage. Permit me to remind you that the  
Kentucky women have succeeded in imposing an educational qualification  
on Kentucky women and yet retain their place in the national  
Why is the Limited Suffrage League to be refused admittance?  
I hope to see you on the evening of Nov. 20<sup>th</sup> at the Walton.  
Very sincerely yours  
Mary Annison

[Nov. 10, 1912]

BE IT RESOLVED by the Senate and House of Representatives of the Commonwealth of Pennsylvania in General Assembly met, that the following amendment to the Constitution of Pennsylvania be and the same is hereby proposed in accordance with the eighteenth Article thereof:

That section one of Article eight, which reads as follows:

"Section 1. Every male citizen twenty-one years of age, possessing the following qualifications, shall be entitled to vote at all elections, subject however to such laws requiring and regulating the registration of electors as the general assembly may enact.

First. He shall have been a citizen of the United States at least one month.

Second. He shall have resided in the State one year (or, having previously been a qualified elector or native-born citizen of the State, he shall have removed therefrom and returned, then six months) immediately preceding the election.

Third. He shall have resided in the election district where he shall offer to vote at least two months immediately preceding the election."

be amended so that the same shall read as follows:

Section 1. Every citizen twenty-one years of age, possessing the following qualifications, shall be entitled to vote at all elections, subject however to such laws requiring and regulating the registration of electors as the General Assembly may enact. The word "citizen" includes alike males and females, and wherever the words "he," "his," "him," or "himself" occur in this Article, they shall be construed as if written respectively "he or she," "his or her," "him or her" and "himself or herself."

First. He shall have been a citizen of the United States at least five years and be able to read and write the English language, and be able to comply with any further educational test which the legislature may impose: Provided, that this clause shall not disfranchise anyone who is otherwise qualified to vote at the time of the adoption of this amendment.

Second. He shall have resided in this State one year (or if, having previously been a qualified elector or native-born citizen of the State, he or she shall have removed therefrom and returned, then six months) immediately preceding the election.

Third. He shall have resided in the election district where he shall offer to vote at least two months immediately preceding the election, and shall not at the time of offering to vote be a duly committed inmate of any prison or almshouse, or have been such an inmate at any time during the immediately preceding six months: Provided, that the legislature may fix longer periods of disfranchisement for certain crimes which it shall designate.

Fourth. If twenty-two years of age and upwards, he shall have paid within two years a state or county tax, which shall have been assessed at least two months, and paid at least one month, before the election.

Fifth. No voter shall receive assistance in marking his ballot, unless it is shown, and verified by written affidavit filed with the election officers, that he is physically unable to mark his ballot without such assistance.

*Not an Amendment: already in the Constitution*

"Go for all sharing the privileges of the government who assist in bearing its burdens, by no means excluding women!"  
---Abraham Lincoln.

## Kansas Equal Suffrage Association

Lucy B. Johnston, President, Topeka  
Ella M. Evans, Corresponding Secretary, 1318 Buchanan, Topeka  
Stella H. Stubbs, First Vice Pres., Topeka. Cora W. Bullard, Second Vice Pres., Tonganoxie  
Helen N. Eacker, Rec. Sec., Lawrence. Sarah A. Thurston, Treas., Topeka. Sallie Lindsay White, Auditor, Emporia

### DISTRICT PRESIDENTS

First.—Cora W. Bullard, Tonganoxie  
Second.—Genevieve H. Chalkley, Lawrence  
Third.—Magdalen B. Munson, Pittsburg  
Fourth.—Mrs. H. C. Wirick, Yates Center  
Fifth.—Mattie E. Kimball, Manhattan  
Sixth.—Lizzie W. Smith, Stockton  
Seventh.—Minnie J. Grinstead, Liberal  
Eighth.—Minerva C. Babb, Wichita



### HONORARY VICE PRESIDENT

Lillian M. Mitchner, Topeka

### COMMITTEES

Press, Catherine A. Hoffman, Chairman, Enterprise  
Membership, Alberta L. Corbin, Ph. D., Chairman, Lawrence  
Education, Effie Graham, Chairman, Topeka  
Finance, Pansy M. Clark, Chairman, Rosedale

Topeka, Kas., Nov. 11, 1912.

My dear Miss Clay,

Perhaps you are beginning to think that enfranchised women are like Republics, ungrateful. You know something of conditions, so I feel sure will excuse my tardiness in replying to your letter, in which you increase the debt of gratitude we owe you.

We feel certain that we have won; but, since we have not complete returns, my flag has not yet been flung to the breeze. I'm glad that you, as well as Miss Shaw and Mrs. Colby have a part in our victory, after having suffered in so many defeats.

In my judgment Kansas women should keep up a good state organization for two reasons—The selfish one, and not entirely that either, to waken the civic conscience of women—the second to assist all our sisters in their campaigns for "Votes for women."

The last two weeks of the campaign I was in the field quite a part of the time, so necessarily the office work was neglected. We closed headquarters Friday night

and now that I have my own office business well up,  
I'm trying to clean up the ends of the Suffrage work.

I wish when Kentucky has her campaign, we could  
do as much for you, as you have done for us; but on  
the personal side of the work we have no able speakers  
to send. Financially we can help.

I regret exceedingly that my business makes it im-  
possible for me to attend the National Convention, but changes  
in office force keep me here.

I am very glad for the opportunity that  
enabled a renewal of our acquaintance, and I hope  
sometime we may meet again.

Mr. Thurston & my Sister join in remembrances  
to you. I think Mr. T. is quite as glad of the outcome  
of our campaign, as I am - perhaps more so.

He has latched it to individual voters constantly,  
and distributed our literature.

Cordially Yours.

J. A. Thurston



CAMPAIGN  
Michigan Equal Suffrage Association

Executive Committee

Mrs. Clara B. Arthur, President . . . Detroit  
Mrs. Huntley Russell, Vice Pres. . . Grand Rapids  
Mrs. Fred N. Rowe, Rec. Sec. . . Grand Rapids  
Miss Alice M. Boutell, Cor. Sec. . . Detroit  
Mrs. May Stocking Knaggs, Treas. . . Bay City  
Mrs. Jenny C. Law Hardy, Auditor . . . Tecumseh  
Mrs. Clara C. Hickey, Auditor . . . Detroit

General Headquarters and Office  
of President:  
205 Telegraph Building  
Detroit

AMENDMENT TO STATE CON-  
STITUTION GRANTING VOTES  
TO WOMEN TO BE SUBMITTED  
TO THE VOTERS, NOV. 5, 1912.



Chairmen of Committees

FINANCE . . . Mrs. F. L. Chapel, Kalamazoo  
ORGANIZATION . Mrs. Huntley Russell, Grand Rapids  
LITERATURE . Mrs. Lois M. Jones, Grand Rapids  
PRESS . Mrs. Jenny C. Law Hardy, Tecumseh  
ADVERTISING . Mrs. C. B. Hamilton, Grand Rapids  
SPEAKERS BUREAU }  
PUBLICITY DEPT. } . W. W. Powell, Kalamazoo

Campaign Headquarters  
405-6 Fourth National Bank Building  
Grand Rapids

CAMPAIGN SECRETARY  
MRS. WM. F. BLAKE

GRAND RAPIDS, MICH., Nov. 11th, 1912.

My dear Miss Clay,

I am in favor of admitting to membership in the National American Woman Suffrage Ass'n all of the leagues whose applications you have sent me, except the one which advocates a limited suffrage.

I am not in favor of advocating a limited or educational suffrage for women. After our women all have the suffrage it will be time enough it seems to me to talk of that, for both men and women.

Please pardon me for being so slow in replying but you doubtless know that these are very busy and troublous times and the end is not yet, for we may have a contest on in some of our counties and it behooves us to be alert and "on the Job". That is where I have been, with several other of our Grand Rapids women for the past seven months and we shall be glad when it is all over.

This contest may keep us from attending the Convention. Seven of us had planned to go to Philadelphia from G.R., including my husband.

Cordially Yours,

*Mrs. Huntley Russell*

# National American Woman Suffrage Association

(Member National Council of Women and International Woman Suffrage Alliance)

President, Rev. Anna Howard Shaw, Moylan, Pa.  
First Vice President, Rachel Foster Avery, Swarthmore, Pa.  
Second Vice President, Florence Kelley,  
105 East 22nd Street, New York City.  
Corresponding Secretary, Kate M. Gordon,  
1800 Prytania Street, New Orleans, La.



NATIONAL HEADQUARTERS  
Warren, Ohio

Recording Secretary, Alice Stone Blackwell,  
6 Beacon Street, Boston, Mass.

Treasurer, Harriet Taylor Upton, Warren, Ohio.

Auditors: { Laura Clay, 189 N. Mill St., Lexington, Ky.  
Ella S. Stewart, 5464 Jefferson Ave., Chicago, Ill.

Lexington, Ky.

Nov. 11th, 1912.

My dear Mrs. Roebuck,

I have just received a letter from Esther B. Bennett, saying definitely that she cannot go to the National Convention; so you had better fill out the first alternate as a delegate in her place. It is more complimentary, and might as well be done, when we know the delegate is not going. Mrs. Harry B. Hanger and Mrs. Thompson Burnam are now in New York and went with the intention of going to Philadelphia. Miss Mary Neville, Lexington, expects to go; and I hope Mrs. Mary Garth, of Lexington, will go. But she is doubtful; and I suggest that you send her her certificate, but without filling in her name, and if she should decide not to go, then she will let me know and I will fill it in with one of the alternates. But send her the blank, in the first instance. Mrs. E. L. Hutchison, 631 Main Street, Lexington, thinks she can go. In short, there seems to be every probability of our having a full delegation.

Have you had any answer from Mrs. Mason Maury and Mrs. John Little accepting their election to office? I think in writing to Mrs. John Little and sending her certificate, you had better mention that if she does not intend to go to Philadelphia she should choose a proxy for the member of the Executive Committee out of the delegates or alternates who were elected at the convention. Would it not be your judgment, seeing there is no provision in the constitution, that her proxy should be chosen from one of those which the convention has selected? Of course, you should send her a list of the delegates and alternates. You had bet-

ter explain to her that the proxy will last only for the convention, and that she herself will be the Ex.Com.member the rest of the term.

How are you coming on? Our election for School Board came out splendidly. I really think the men enjoyed having the women at the polls. The whole day was as quiet as a church meeting. Our Mayor certainly had good order enforced, and our Fayette E.R.A. sent him a note of thanks.

Is there any thing I can do to help you with the minutes? If so, write to me before I start to Philadelphia, which I expect to do the 19th. I shall stop on Philadelphia at Hotel Walton; and after the convention I shall go to visit my sister, Mrs.S.D.Crenshaw, xix 919 West Franklin Street, Richmond, Virginia. I expect to stay there some little time.

I am still busy, writing reports, etc., for the National.

Hoping you are well, and that I shall hear from you soon, I am

Very cordially yours,

MRS. F. T. RAIFORD, President  
620 Mabry Street  
MRS. S. G. GAY, Vice-President  
721 Dallas Ave

MISS MARY W. PARTRIDGE, Secretary  
906 Mabry Street  
MRS. J. B. PARKE, Treasurer  
623 Selma Ave.

SELMA SUFFRAGE ASSOCIATION

SELMA, ALABAMA

Nov. 12<sup>th</sup>, 1912.

Miss Laura Clay,  
189 North Mill St.,  
Lexington, Ky.

My dear Miss Clay: Can you come to Selma  
in Jan. and give a lecture on Woman suff-  
rage for the Selma Suffrage Association?  
If you can, please say on what terms  
you will come.

Yours truly,  
Mary Winslow Partridge.

Hickman Ky  
Nov 12 1912

Dear Mrs Clay

Yours of 29 received & I  
am so rejoiced over our victory  
of four States that I scarcely  
know whether I am honoring  
my sister or sixty five  
I hope we can get our amend  
ment from general assembly in  
1914 Our work seems to be in  
such an indifferent state here  
Five of us met after the  
Election & we expect to  
work new life into the  
organization after Christmas  
I have finished my house  
so will be free to work  
on Superage, I am so rejoic  
ed to hear by Federation of Clubs

have endorsed the <sup>Nov. 12, 1912</sup> Monument  
Inclosed find Checks for  
one Thousand dollars with  
Hopes that we may be very  
successful in our work  
Hope you will have a  
splendid time in Philadel-  
phia

Let me hear from you  
as soon as you receive  
this From your loving  
Friend

S M Hubbard

[ Nov. 12, 1912 ]

Mr. and Mrs. Patrick Joseph McEroy  
request the honour of  
your presence at the marriage of their daughter  
Agnes Maria  
and  
Mr. Brutus Junius Clay  
on the evening of Tuesday the twelfth of November  
at half after six o'clock  
at Four hundred and two Cathedral Street  
Baltimore, Maryland

# Kentucky Equal Rights Association

"If Ye Abide in My Word \* \* \* Ye Shall Know the Truth,  
and the Truth Shall Make You Free."

President, Mrs. Laura Clay,  
189 Mill St., Lexington.  
First Vice President, Mrs. Mary B. Clay, Richmond.  
Second Vice President, Mrs. Mary C. Cramer, Lexington.  
Third Vice President, Mrs. N. S. McLaughlin, Covington.

Corresponding Secretary, Mrs. Mary C. Roark, Richmond  
Recording Secretary, Mrs. Emma M. Roebuck,  
313 York St., Newport.  
Treasurer, Mrs. Isabella H. Shepard,  
31 E. Twelfth St., Covington.

Newport, Ky. November 13. 1912

My dear Miss Clay: -

I received the certificates for the delegates and alternates to the national convention, from Mrs. Breckinridge yesterday. Filled them out and am sending them this morning. Am sending you all those from Lexington as I do not know that I have correct addresses. Also am sending you, (as Mrs. Breckinridge requested) all the certificates of alternates, except Miss Carolyn Leech's and Prof. Gilman's. I began filling in the names of the alternates and then began to think it best to leave the name & place blank, as it might have to be filled in at Philadelphia. Am enclosing a list of the names of the alternates.

Hope you all will enjoy a successful convention.

Very Sincerely

Emma M. Roebuck

(over)



P.S. I have the Treasurer's books ready for Mrs. Warfield Bennett, but I must make out the Treasurer's report for the minutes before I send them to her.

So very glad your reputation as a prophet is saved! Four more states at stroke seems like rushing things, doesn't it.  
E. M. P.

[Nov. 13, 1912]

Alternates

- |                        |                        |
|------------------------|------------------------|
| 1 Mrs. Murray Hubbard  | * 2 Mrs. Lee Bernheim  |
| * 3 Prof. W. G. Gilmer | 9 Miss Daisy Willis    |
| 4 Mrs. F. C. Thomas    | 10 Miss Carolyn Leech  |
| 5 Mrs. Chas. Nield     | 11 Miss Willie Kennedy |
| 6 Mrs. Sarah Charles   | 12 Mrs. Sam Roberts    |
| 7 Mrs. C. M. Freeman   | 13 Miss Mason Brown    |
| 8 Mrs. Agnes Eifort    | 14 Miss Margaret Brown |
|                        | 15 Mrs. C. H. Berryman |

189 N. Mill Street, Lexington, Ky.

Nov. 14th, 1912.

Miss Mary W. Partridge,

Selma, Ala.

Dear Miss Partridge,

Your letter of the 12th inst. is at hand.

I could come to Selma to give a suffrage address in January, if desired. My terms would be \$35.00, and entertainment whilst in the city. If other engagements were made for me along the route, sharing the expenses, I could come for proportionately less.

Very truly yours,

# National American Woman Suffrage Association

(Member National Council of Women and International Woman Suffrage Alliance)

*President*, Rev. Anna Howard Shaw, Moylan, Pa.  
*First Vice President*, Rachel Foster Avery, Swarthmore, Pa.  
*Second Vice President*, Florence Kelley,  
105 East 22nd Street, New York City.  
*Corresponding Secretary*, Kate M. Gordon,  
1800 Prytania Street, New Orleans, La.



NATIONAL HEADQUARTERS  
Warren, Ohio

*Recording Secretary*, Alice Stone Blackwell,  
6 Beacon Street, Boston, Mass.

*Treasurer*, Harriet Taylor Upton, Warren, Ohio.

*Auditors*: { Laura Clay, 189 N. Mill St., Lexington, Ky.  
Ella S. Stewart, 5464 Jefferson Ave., Chicago, Ill.

# Kentucky Equal Rights Association

"If Ye Abide in My Word \* \* \* Ye Shall Know the Truth,  
and the Truth Shall Make You Free."

President, Mrs. Laura Clay,  
189 Mill St., Lexington.

First Vice President, Mrs. Mary B. Clay, Richmond.

Second Vice President, Mrs. Mary C. Cramer, Lexington.

Third Vice President, Mrs. N. S. McLaughlin, Covington.

Corresponding Secretary, Mrs. Mary C. Roark, Richmond

Recording Secretary, Mrs. Emma M. Roebuck,  
329 York St., Newport.

Treasurer, Mrs. Isabella H. Shepard,  
31 E. Twelfth St., Covington.

Newport, Ky. Nov. 14, 1912

My dear Miss Clay:-

Had just completed the certificates for delegates and alternates and mailed them when I received your letter telling me of Mrs. Warfield Bennett's inability to attend the convention. She has probably received her certificate by this time. I also sent her Mrs. Thompson Burnham's and Mrs. Harry B. Hanger's certificates. By some lucky chance Mrs. John Little's certificate & letter was still on my desk, so I opened that and wrote her another letter telling her about a proxy if she found it impossible to attend and enclosed a list of the delegates & alternates. I have never heard from either her or Mrs. Maury as to whether they would accept or not, but I suppose silence means consent.

Thanks for the offer about the minutes. There is nothing you can do to help me, except

Association Equal Rights Kentucky

177 to 1840...  
1840 to 1850...  
1850 to 1860...  
1860 to 1870...  
1870 to 1880...  
1880 to 1890...  
1890 to 1900...  
1900 to 1910...  
1910 to 1920...  
1920 to 1930...  
1930 to 1940...  
1940 to 1950...  
1950 to 1960...  
1960 to 1970...  
1970 to 1980...  
1980 to 1990...  
1990 to 2000...  
2000 to 2010...  
2010 to 2020...  
2020 to 2030...  
2030 to 2040...  
2040 to 2050...

to find out for me whether Mrs. Breckinridge has yet found someone as chairman of the Prize Contest committee and someone for chairman of the committee on Industrial Problems affecting Women & Children, and I think the managing of the Press Work was left to her. If you can tell me anything definite about these committees it will certainly help me.

Hope you will have a successful convention and that all will be congenial.

Very Sincerely,  
Emma M. Roebuck.

254 N 25<sup>th</sup> Street,

Portland, Oregon.

November 14 - 1912.

Miss Laura Clay.

702 N.S.A.

Witherspoon Hall,

Philadelphia, Pa.

My dear Miss Clay.

The enclosed is the list of members of the Portland Equal Suffrage League, auxiliary to the National Association. We are directly auxiliary to the National Association as the State League here in Oregon is not-affiliated with the National Association.

Very truly yours.

Hanna S. Brown Secy.

Portland Equal Suffrage League.

Nov. 14, 1912

List of Members of  
Portland Equal Suffrage League

Portland, Oregon.

Mr. Christian Anderson.	Mrs. F. K. Bates.
Mrs. M. B. Allen.	Mrs. Clara Bushnell.
Mrs. Alice M. Allen.	Mrs. D. C. Bates.
Mr. C. F. Anderson.	Mrs. Arthur Bancroft.
Mrs. J. M. Anderson.	Mrs. L. C. Beane.
Miss Maude Answorth.	Mrs. Herbert Bradley.
Miss C. A. Barnes.	Mrs. Chas. Berg.
Miss D. Briggs.	H. Bruch.
Mrs. J. H. Bradley.	Mrs. Theo. B. Brown.
Miss Phoebe Bryman.	Mrs. Louis Beale.
Mrs. A. Bodine.	Mrs. John Boyd.
Mrs. Cornelia Bushnell.	Mrs. James Canby.
Mrs. S. Beach.	Miss Cornelia Cook.
Miss Mary S. Burdick.	Miss Elizabeth Caswell.
Mrs. F. W. Berry.	Mrs. Elliot Corbett.
Mrs. O. C. Black.	Mrs. Cullen.
Mrs. A. W. Bowman.	Mr. A. E. Clark.
Mrs. John Beale.	Mrs. A. E. Clark.
Mrs. R. B. Bain.	Mrs. Vincent Cook.
Mrs. Bright.	Mrs. H. W. Chapin.



Nov. 14, 1912

Mrs. Rufus Holman.  
 Mrs. Walter Hanson.  
 Mrs. H. Healding.  
 Mrs. Hawkins.  
 A. Kelly.  
 Miss E. Harper.  
 Mrs. Keyne.  
 Miss Harris.  
 Miss M. F. Isom.  
 Mrs. Henry Jones.  
 Mr. C. S. Jackson.  
 Mrs. C. S. Jackson.  
 Miss Marion Jackson.  
 Mrs. J. D. & V. Johnson.  
 Miss Meredith James.  
 Miss Agnes Jameson.  
 Miss May Jamison.  
 Mrs. G. V. James.  
 Mrs. B. S. Josselyn.  
 Mrs. Stanley Jewett.

Miss B. Lena Jacobs.  
 Mrs. Jackson.  
 Mrs. E. B. Jameson.  
 Mrs. Laura King.  
 Mrs. Wm R. King.  
 Miss F. Knowlton.  
 Mrs. F. A. Knapp.  
 Mrs. F. R. Kendall.  
 Mrs. Ida M. Kayser.  
 Mrs. Edward Kingsley.  
 Mrs. Howard Kelham.  
 Mr. Howard Kelham.  
 Miss Myrtle Kelley.  
 Mr. Otto J. Kramer.  
 Mrs. C. E. Kockler.  
 Mrs. John Keating.  
 Mrs. Ed. Latta.  
 Mr. J. Wesley Ladd.  
 Mrs. B. M. Lombard.  
 Mrs. E. P. Leary.

Nov. 14, 1912

Mrs. Erika Fredrickson  
 Mrs. M. C. Fulton  
 Mr. Lewis Freeman  
 Miss Anne Friedloch  
 Miss E. C. Felt  
 G. Free deubel  
 Mrs. M. J. Freeman  
 Mr. Joseph Ferguson  
 Mr. Miles Gilbert  
 Mrs. Chas. Gauld  
 Mrs. Edward Gelle  
 Mrs. Wm P. Gammert  
 Mrs. H. W. Goods  
 Mr. C. N. Gaulebauer  
 Mrs. C. N. Gaulebauer  
 Mrs. Cora Goldman  
 Mrs. R. P. Greilaud  
 Mrs. E. P. Gary  
 Miss Gilbert  
 Mrs. Alden Graham  
 Mrs. M. C. Genge

Mrs. Solomon Kersch  
 Miss Ella Kersch  
 Miss May Kersch  
 Miss Clementine Kersch  
 Mrs. Kaupman  
 Miss Polly Kewet  
 Mrs. Lave Kurlbeck  
 Mrs. Haley  
 Mrs. R. R. Koger  
 Mrs. Ed. Kersch  
 Mrs. B. H. Kogge  
 Mrs. Caroline Kephner  
 Mr. Wm. Kaulley  
 Mr. Samuel Kersch  
 Miss Jane Kogge  
 Miss Louise Kunk  
 Dr. Herbert Kegel  
 Mrs. Hawley Koffman  
 Mrs. Georgie Moss  
 Mrs. H. C. Kaulington  
 Mrs. M. L. Koolbrook

Nov. 14, 1912

Mrs. Anna B. Carroll  
 Mrs. H. L. Corbett  
 Miss Cully Cook  
 Mrs. T. Campbell  
 Mrs. W. E. Brown  
 Miss Blanch Catter  
 Miss Margaret "  
 Mrs. George Collins  
 Mrs. R. C. Coffey  
 Miss Chamberlain  
 Mrs. M. B. Cannon  
 Miss Gertrude Chaschman  
 Mrs. John Crane  
 Mrs. C. C. Craig  
 Miss Louise Clark  
 Miss Jane Caplan  
 Mrs. S. Church  
 Mrs. Edmund Provencat  
 Mrs. Robt. Dick  
 Miss Hazel Dolph  
 Mrs. Bertha Davis  
 Miss Dayton  
 Miss Dayton

Mrs. Tom Jankley  
 Mrs. John Fran.  
 Miss Belleau Josch  
 Dr. Emmet Drake  
 Mrs. Emmet Drake  
 Mr. George A. Denton  
 Mrs. Annie Drownant  
 Mrs. Adolph Drumm  
 Mrs. Frank Dayton  
 Mrs. Sara A. Evans  
 Miss A. Eliot  
 Miss Catharine Emission  
 Mrs. Dwight Edwards  
 Mrs. F. Eggert  
 Miss Helen Eastman  
 Mrs. Mary B. Edmonson  
 Mrs. T. Roman  
 Mrs. L. S. Eastman  
 Mrs. J. Andre Fowell  
 Mrs. F. Friedlander  
 Mrs. F. Z. Flechner  
 Mrs. Wm. Foster  
 Mrs. Bessie Halber  
 Mrs. Ernest Fischer

Nov. 14, 1912

Mrs Marian P. Linsley.  
 Mr. E. Lazarus  
 Mrs Julius Louison.  
 Miss Grace Lambert.  
 Miss Nellie Lambert.  
 Mrs Anna Leadbetter.  
 Mr. Jay Lombard.  
 Mr. Ben. Lombard.  
 Mrs. J. N. Lefevre.  
 Mr. C. M. McArthur.  
 Rev. A. A. Morrison.  
 Mrs A A Morrison.  
 Mr. Geo. A. Mayes.  
 Mrs " " "  
 Miss Jessie Murch.  
 Miss Louise Mauer.  
 Mrs J. H. McCreary.  
 Miss A. J. Miller.  
 Mrs Harriet McArthur.

Miss Berdine Merrill  
 Mrs M. S. Moore.  
 Miss Mary B. Moon.  
 Miss A C Mason.  
 Mrs J. J. Morrod.  
 Mrs Dan Malachuk.  
 Mrs N. E. McCord.  
 Mrs May L. Middlem.  
 Mrs A. R. Mulloin.  
 Mr. Chas McCullough.  
 Mrs Chas McCullough.  
 Mrs Morley.  
 Mrs Murrel.  
 Mrs Maher.  
 Mr. S. May.  
 Mrs Julia Marquand.  
 Miss Margaret Monroe.  
 Mrs C. E. Morley.  
 Mrs C. U. Ferrill

Nov. 14, 1912

Miss Dorothea Nash  
Miss Helen Gillespie  
Mrs Arthur N. Chance  
Mr W. P. Kels  
Mrs Frank Kern  
Mrs H. N. Ogden  
Miss C. A. O'Reilly  
Mrs Leroy Parker  
Dr. Pohl Loopy  
Mrs. Cora Puffer  
Mrs A. S. Paltello  
Mr. G. P. Poyger  
Miss Lucile Parker  
Mrs J. H. Page  
Miss Alice Quigg  
Mrs Thomas Robertson  
Mrs Grace W. Ross  
Miss Muriel Russel

Mrs. G. E. Rees  
Mrs S. M. Rothchild  
Mrs Frank Riley  
Mrs Eugene Rafalsky  
Miss Bertha Reed  
Miss Mores  
Mrs G. B. Raymond  
Mr. C. M. Saei  
Miss Lillian Spencer  
Miss Alice Strong  
Miss Josephine Smith  
Mr. Robt Strong  
Mrs Robt. Strong  
Mrs Fred Strong  
Mrs David Shindler  
Mrs J. Spencer  
Mrs G. Terham Smith  
Mrs Thomas Sharp Jr

NOV. 14, 1912

Mrs Leslie Smith.  
Mrs Affa S Selge.  
Miss Eleanor Scatter.  
Mrs. E. C. Shelton.  
Mrs H N Allen  
Mrs. John M. Scott.  
Mrs W. P. Strandberg.  
Mr. Francis Selby.  
John S Schorder.  
Mrs George Simmons.  
Mr. Paul Selby.  
Mrs Robt. Sabar.  
Mrs Halding.  
Miss H. M. Smith.  
Miss Lucy Smith.  
Mrs S C. T. Stevens.  
Mrs. C. B. Simmons  
Miss Genevieve Thompson.  
Mrs. T. B. Jewett.  
Miss K. L. Jewett.  
Dr. Mary Thompson.  
Mrs J. O. Thomas.  
Mr. Henry Ted.  
J. N. Tral.  
Mrs. Siegfried Waunder.  
Mrs Ashley Early re.  
Miss Margaret van Benschoten.  
Mrs F Vogt.  
Miss Frederica van Benschoten.  
Miss Lucile Vogt.  
Mr. L. a Vogt.  
Miss Mary Volmar.  
Mr. H. C. Van Allen.  
Mr. Hedens H. Ireland.  
Mrs George Pellett.  
Miss Frances Wilson.

Nov. 14, 1912  
Wese

Miss Agnes Pratt.  
 Miss Rolye Nelson.  
 Mr C B Woodruff.  
 Mrs C. B Woodruff.  
 Miss Helen Wilson.  
 Mrs Frank Warren Jr.  
 Miss Emma White.  
 Miss J. B. Greene.  
 Legler Woodard.  
 Mrs Roxana White.  
 Mrs Isaac White.  
 Miss Hazel Miller.  
 Mrs Geo. Anthon.  
 Mrs E. N. Wilson.  
 Mrs F Warren.  
 Edward H. Allard.  
 Mrs C. K. Williams.  
 Mrs J. Northman.  
 Dr. Jonah M. Wise.

Mrs Jonah M. Wise.  
 Dr. E J Melty.  
 Miss Watson.  
 Miss Belle W White.  
 Mrs C. B Woodworth.  
 Mr. F. Waters.  
 Mrs. F. Waters.  
 Mrs F. H Whitefield.  
 Mrs. E B Nelson.  
 Mr. E B Nelson.  
 Mrs R. C. Norcross.  
 Mrs H. M. Matthews.  
 Miss Emma Wood.  
 Mrs F. P. Young.

53.

Total 314