

Population 6500. Prevailing Winds S.W.

WATER FACILITIES

Stand pipe and direct pressure system of water works. Water supplied from a reservoir of 250 million gallons capacity situated three miles east of Court Ho. Two Worthington duplex pumps, combined capacity three million gallons per 24 hours.
12 Miles of water pipes, 4" to 12" diam. 90 Double hydrants. Pressure 75 lbs. per sq. inch.

FIRE DEPARTMENT

Volunteer. Chief and 15 men. Two horses. Swinging harness. Fire alarm by telephone, sounded by bell on trestle in rear of hose house.
One two horse, 4 wheel hose wagon. One 2 wheel hand hose reel with ladders. 200 ft. 2 1/2" good rubber hose.
Principal streets, paved.
Public lights electric.

RICHMOND

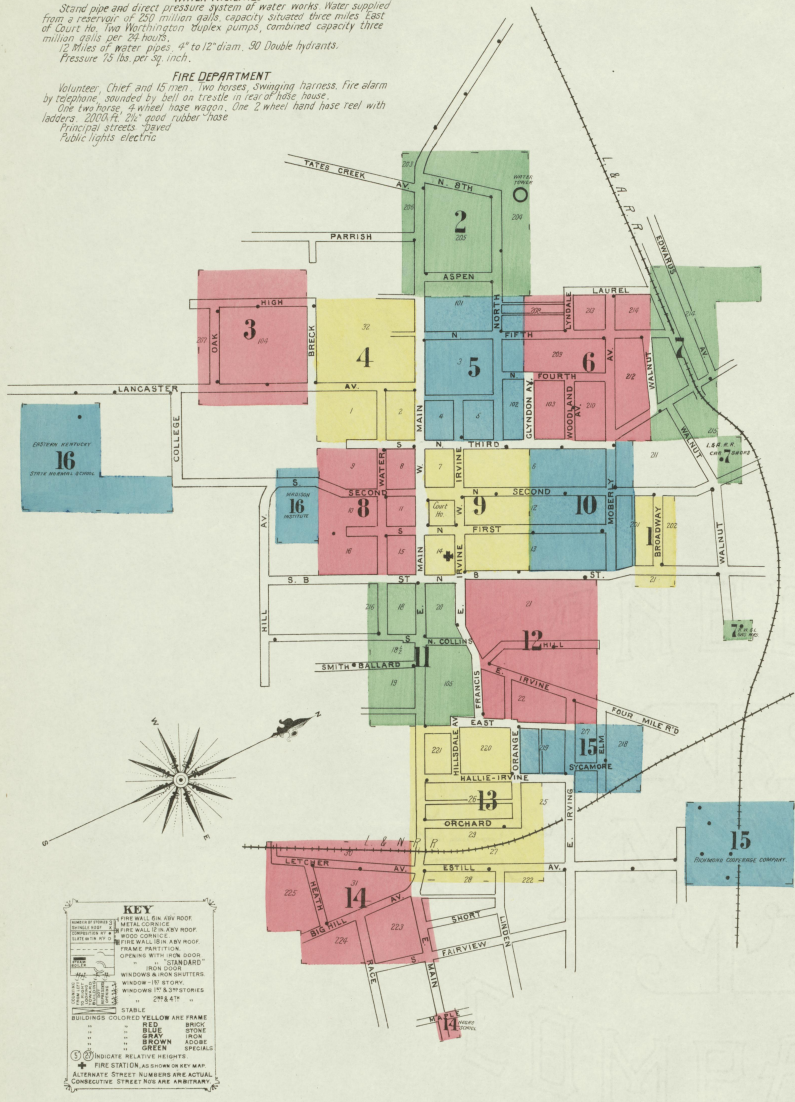
MADISON CO. KENTUCKY

Sanborn Map Company
SCALE SOFT TO AN INCH
11 BROADWAY, NEW YORK

OCT 1907

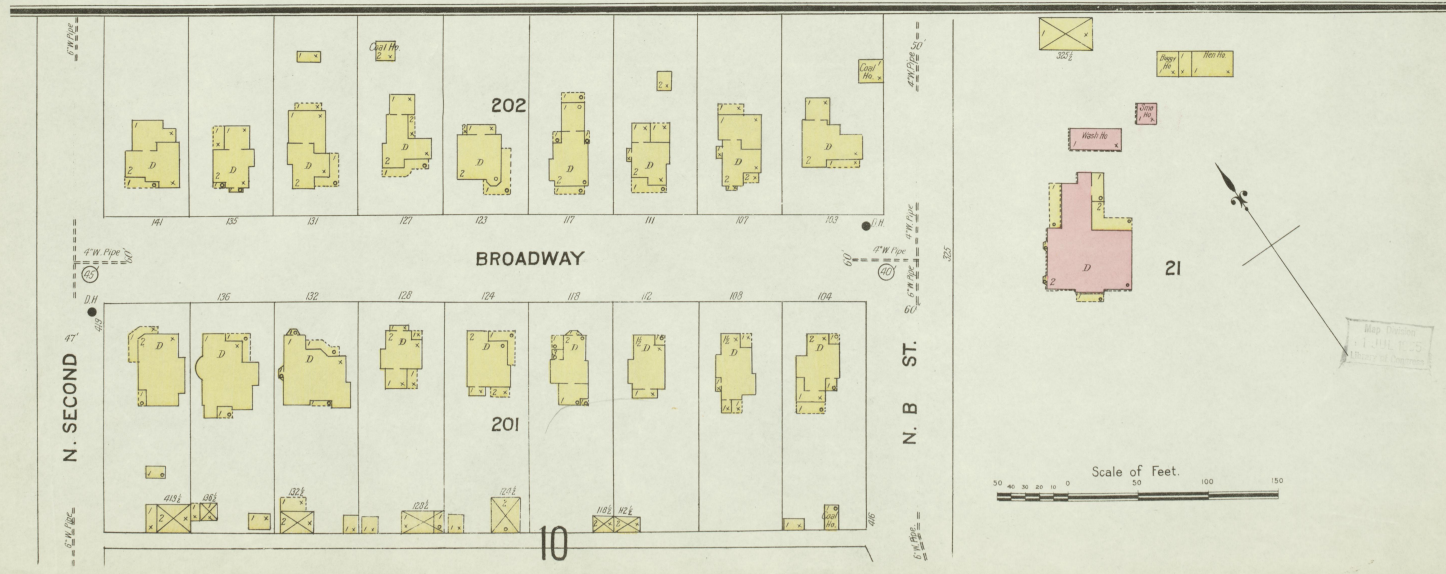
Copyright 1908, by the Sanborn Map Co.

LIBRARY OF CONGRESS
DISTRIBUTION STATEMENT
JAN 17 1908
Copyright 1907
Copyright 1908



INDEX

STREETS		INDEX	
Aspen Ave. A	100-145 2	Christian Church	4
B Street, N	100-246 9	Clay P. A. Infirmary	12
" "	101-118 11	Conroy Court House and Jail	6
" "	248-412 10	Eastern Kentucky State Normal School	16
" "	101-225 8	First Baptist Church	4
" "	101-225 8	Fire Department	5
" "	101-225 8	First Baptist Church	4
" "	101-225 8	Church of Christ	5
" "	101-225 8	Frederick Church	5
" "	101-225 8	Gilson's Infirmary	5
" "	101-225 8	High School (Negro)	14
" "	101-225 8	Held Olyden	8
" "	101-225 8	Hume, W. S. & Co. Distillery	17
" "	101-225 8	Kellings Grocery Co.	5, 13
" "	101-225 8	Kentucky Carriage Works	8
" "	101-225 8	Matthies & Ware Ho. Co.	17
" "	101-225 8	Pharmaceutical Co.	9
" "	101-225 8	L	
" "	101-225 8	L. & A. E. R. Car Shops	7
" "	101-225 8	L. & N. R. E. Depots	14
" "	101-225 8	Engines Ho.	13
" "	101-225 8	Linon & Bro. Coal and Feed	13
" "	101-225 8	Masonic Institute	16
" "	101-225 8	Methodist Temple	9
" "	101-225 8	South Epiph. Church	9
" "	101-225 8	St. Charles Hotel	9
" "	101-225 8	St. Paul A. M. E. Church (Negro)	12
" "	101-225 8	Second Christian Church	9
" "	101-225 8	Presbyterian Church	9
" "	101-225 8	Silver Creek Distillery	9
" "	101-225 8	Staircase	18, 12
" "	101-225 8	Standard Oil Co.	13
" "	101-225 8	United Baptist Church	11
" "	101-225 8	United States Postoffice	11
" "	101-225 8	Warwick Distillery	17
" "	101-225 8	Z	
" "	101-225 8	Zaring, J. W., Grain & Mill Co.	11, 13



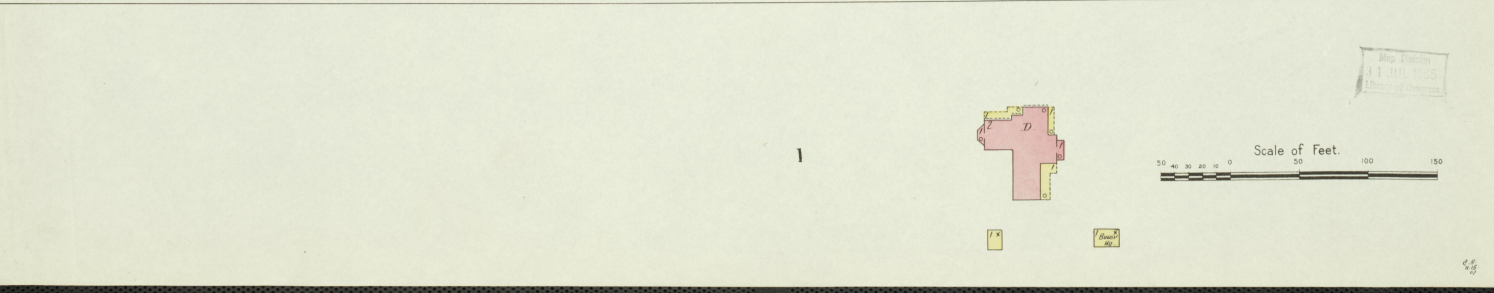
Oct 1907
RICHMOND
KY.

N O E X P O S U R E

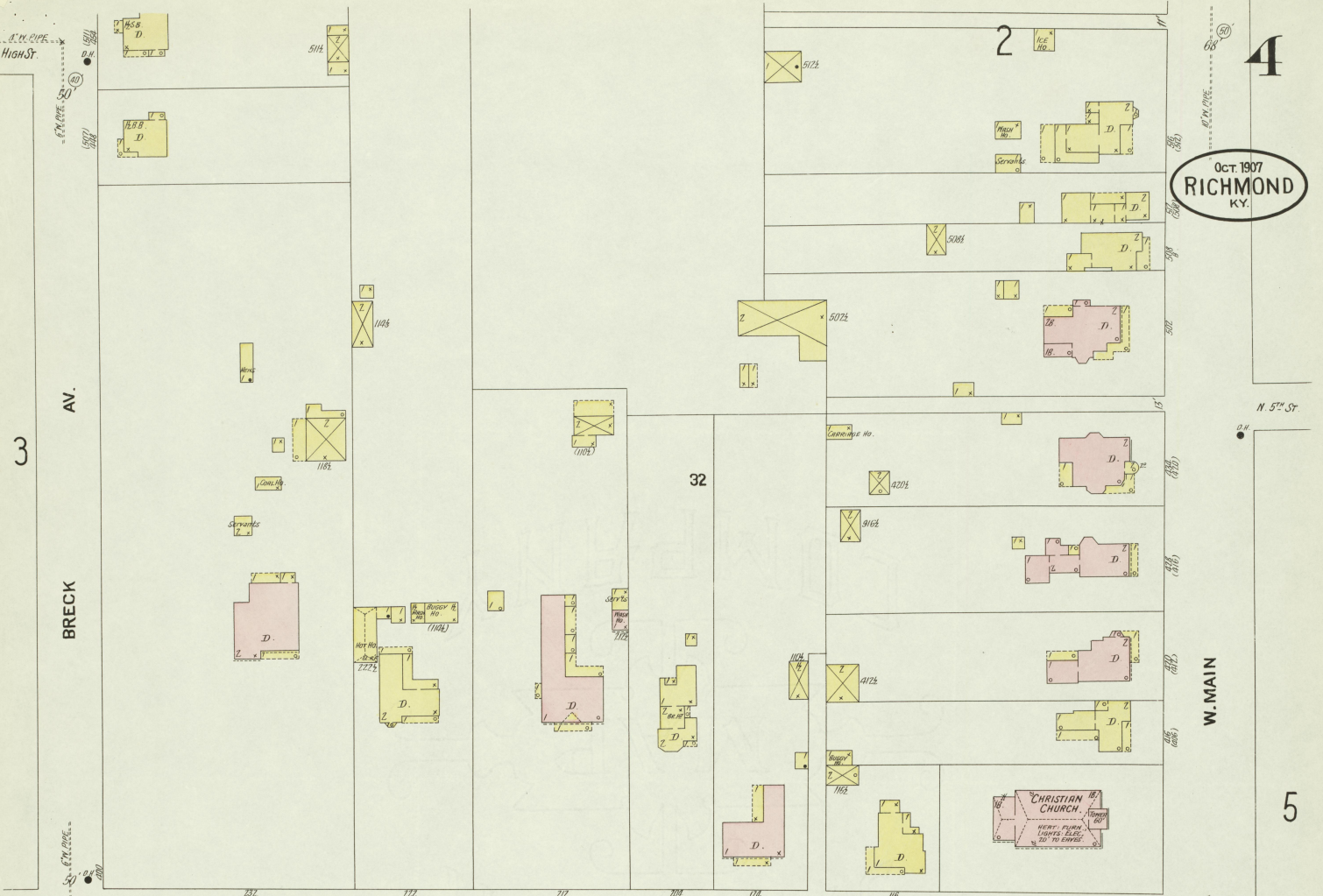
Sr. D. Record.



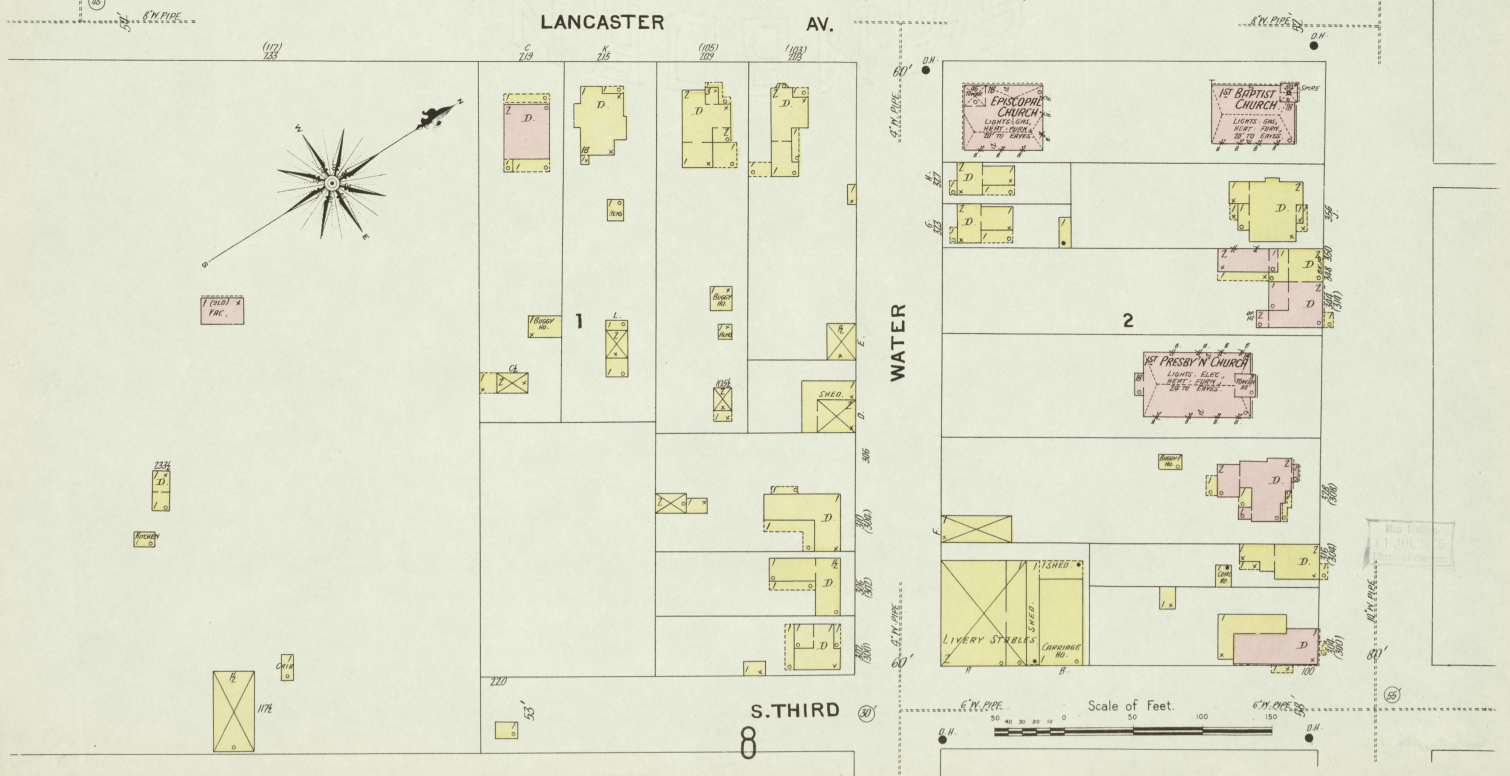
OCT. 1907
RICHMOND
KY.



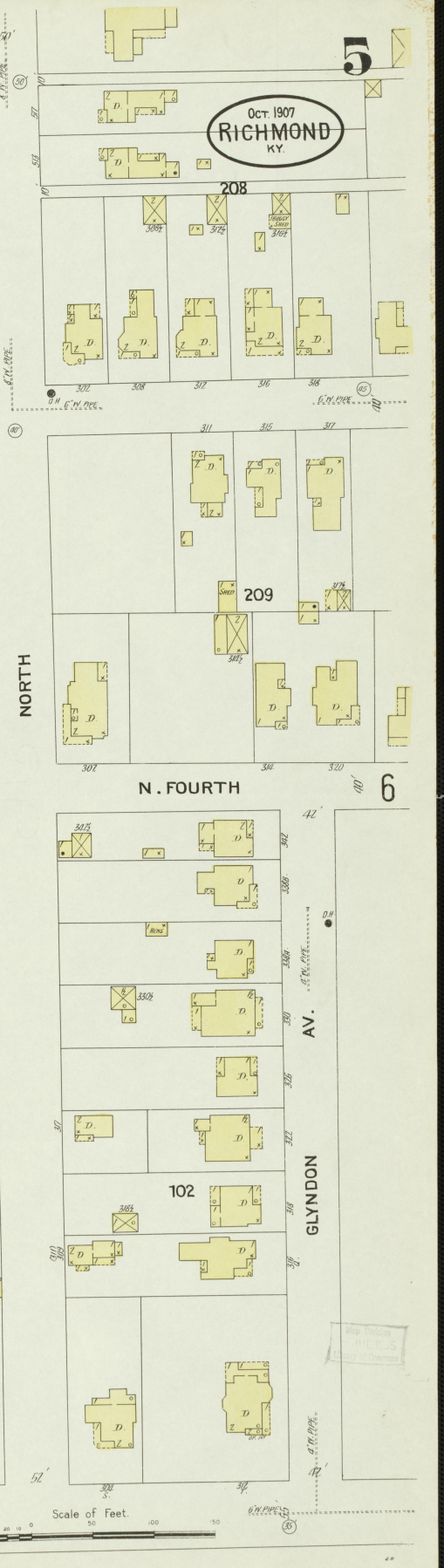
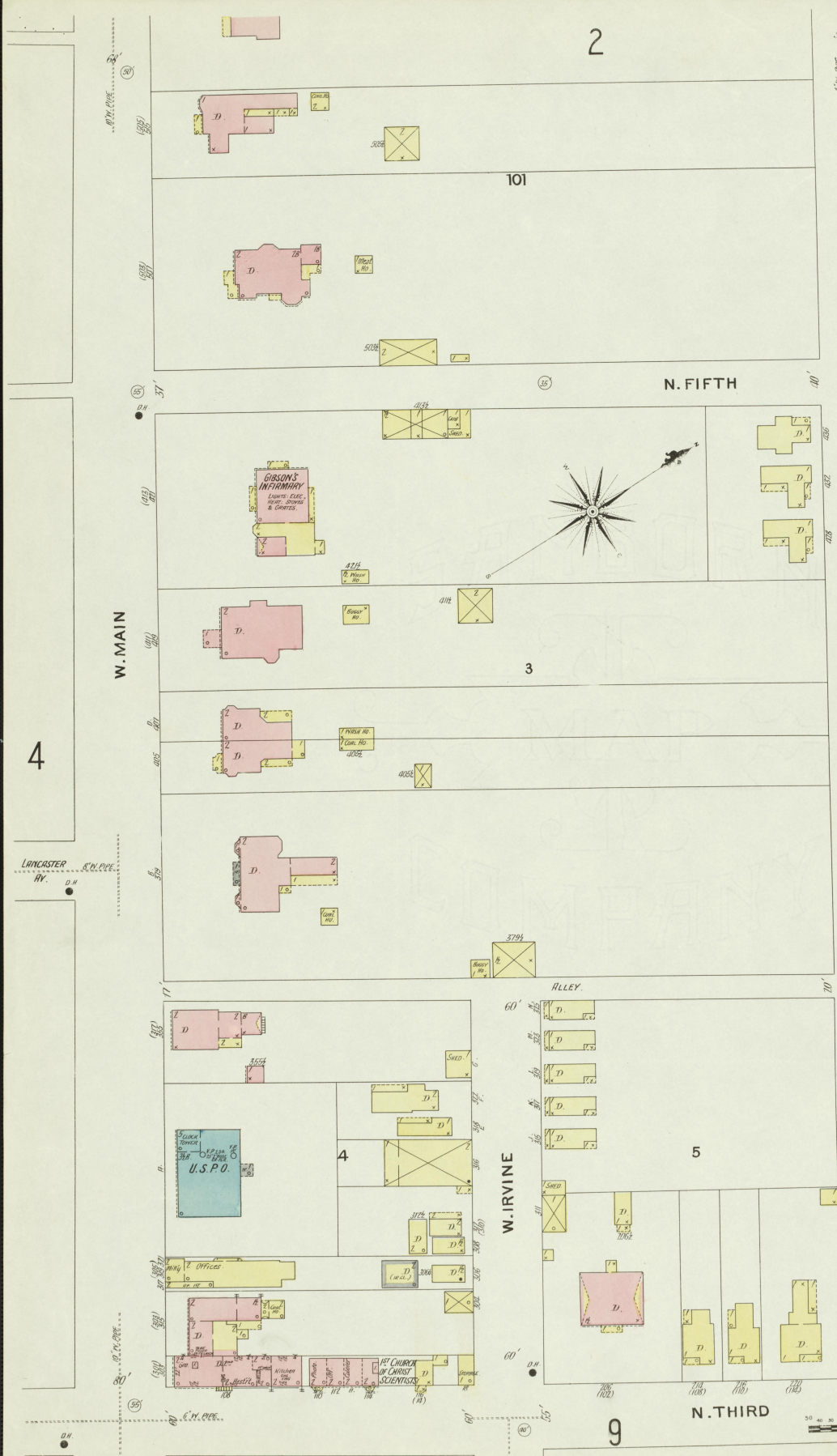
Scale of Feet.
0 20 40 60 80 100 120 140 150



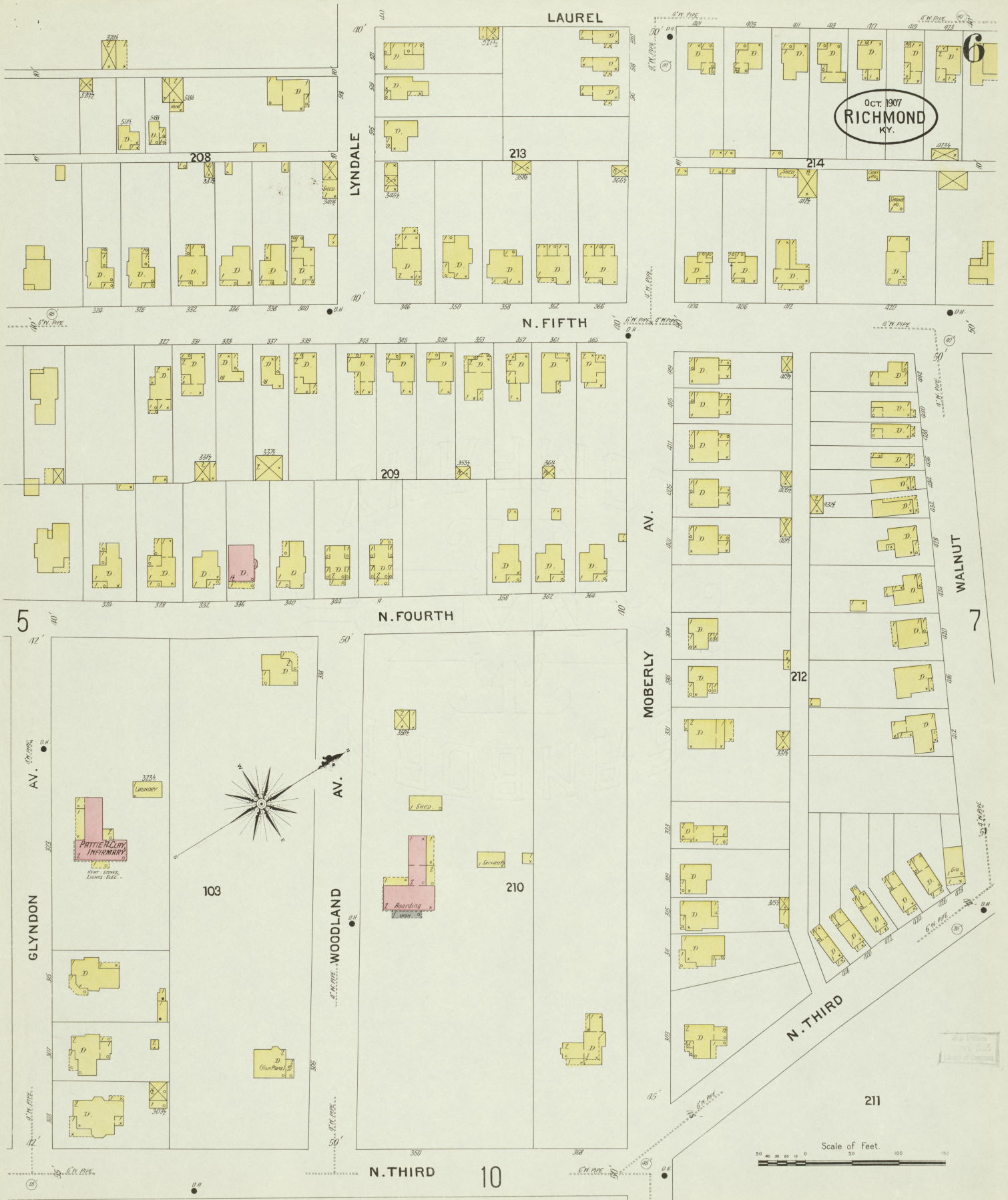
Oct. 1907
RICHMOND
 KY.



Scale of Feet.
 0 50 100 150



OCT 1907
RICHMOND
KY.



LAUREL
208
213

214

N. FIFTH
209

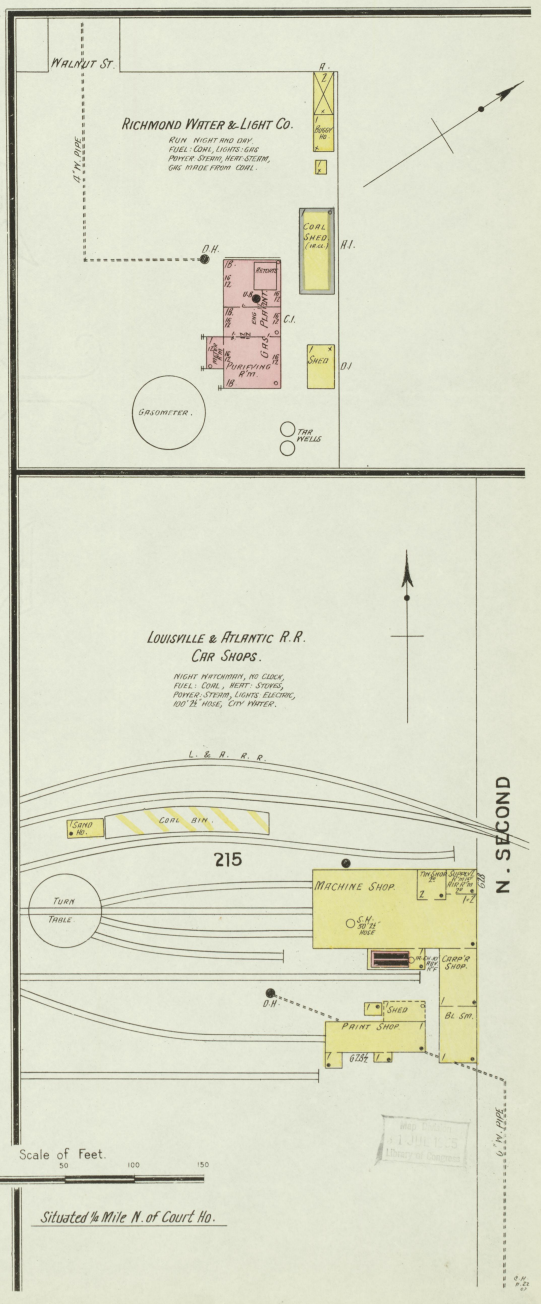
MOBERLY
212

5
N. FOURTH
103
210

7
WALNUT
211

Scale of Feet.
50 100 150

Oct. 1907
RICHMOND
KY.



8

4

Dec. 1907
RICHMOND
KY.

S. THIRD

S. SECOND

S. FIRST

W. WATER

E. WATER

W. MAIN

E. MAIN

SOUTH B

9

8

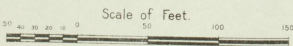
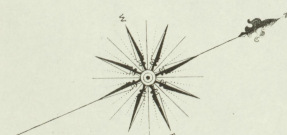
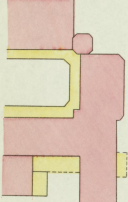
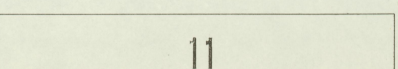
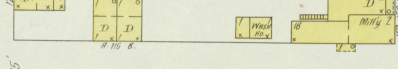
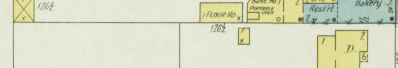
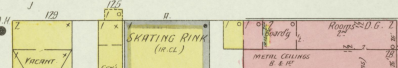
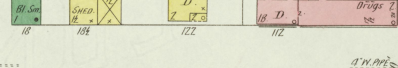
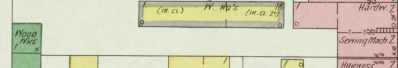
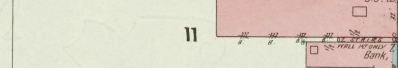
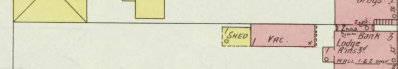
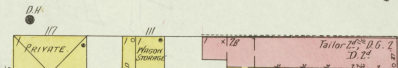
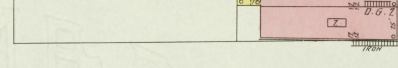
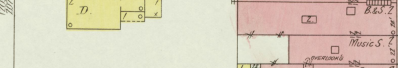
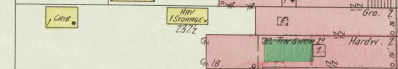
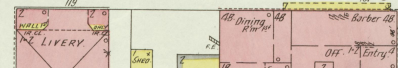
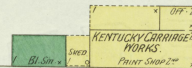
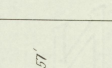
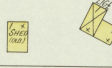
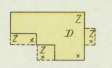
10

11

16

15

11



NORMAL CITY
STEINBLUNDY
(IN CL.)
HEAT, STEAM,
POWER, WATER,
LIGHT, GAS,
PUB. UTIL.

IRVINE ST. D.H.

5

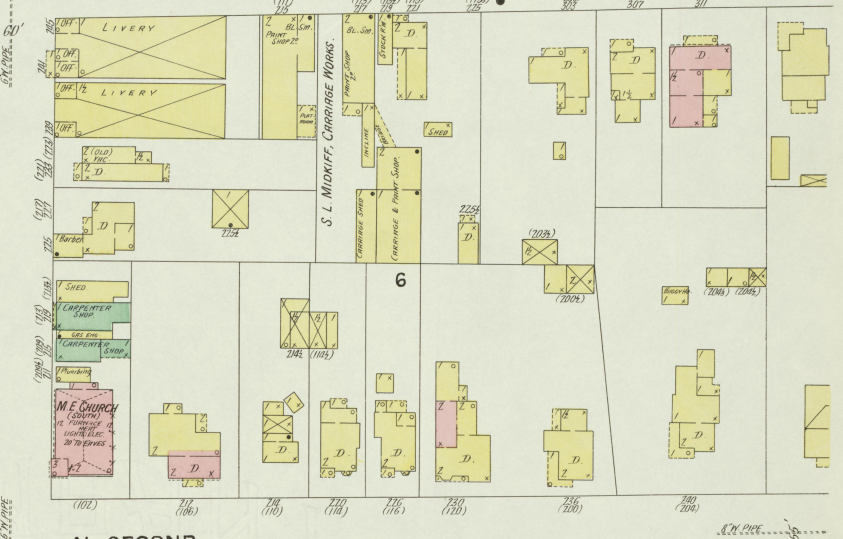
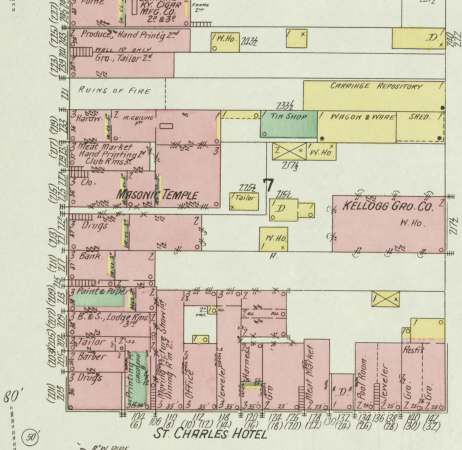
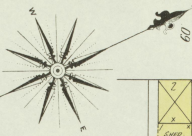
NORTH ST.

N. THIRD

60'

80'

82' W. PIPE



N. SECOND

80'

90'

W. MAIN

W. IRVINE

100'

8' W. PIPE

108' E. PIPE

80'

8' W. PIPE

8' W. PIPE

N. FIRST

80'

80'

8' W. PIPE

8' W. PIPE

80'

E. MAIN

E. IRVINE

80'

8' W. PIPE

8' W. PIPE

NORTH B

80'

80'

8' W. PIPE

8' W. PIPE

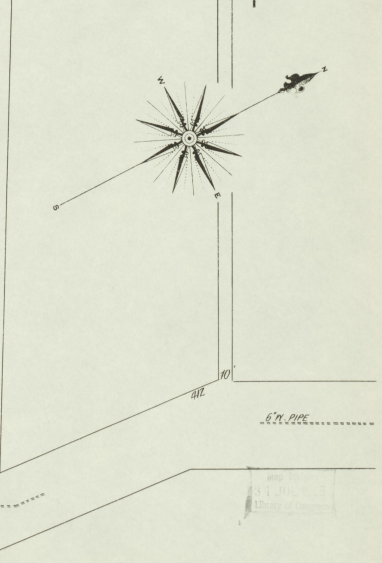
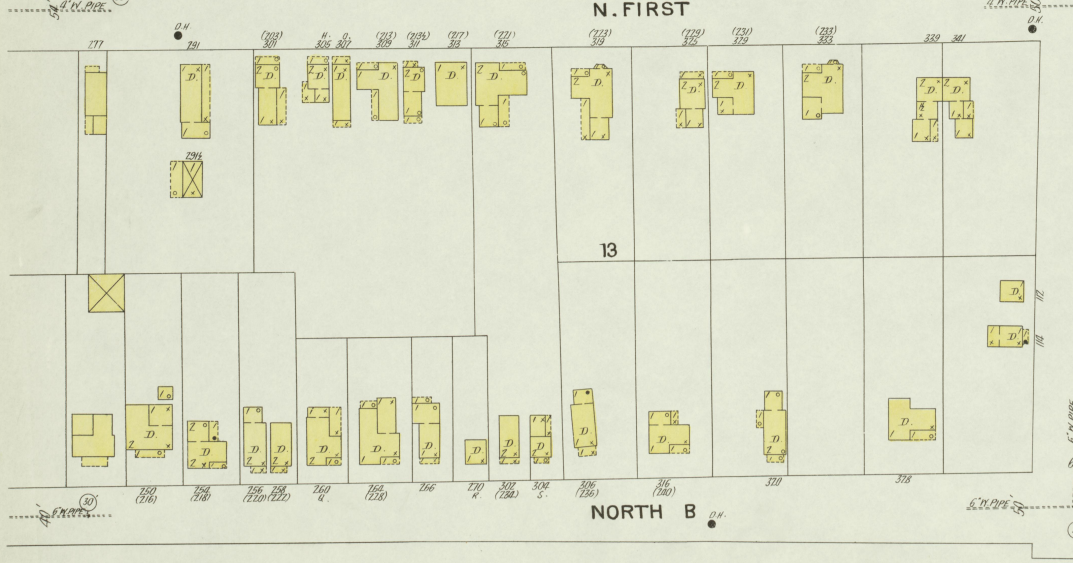
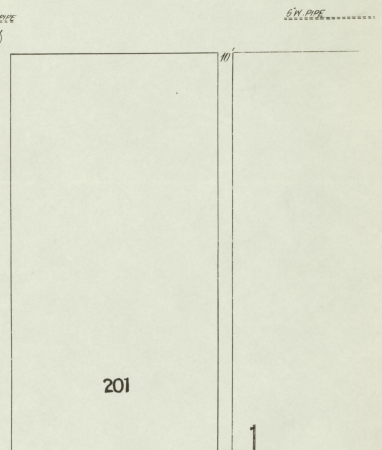
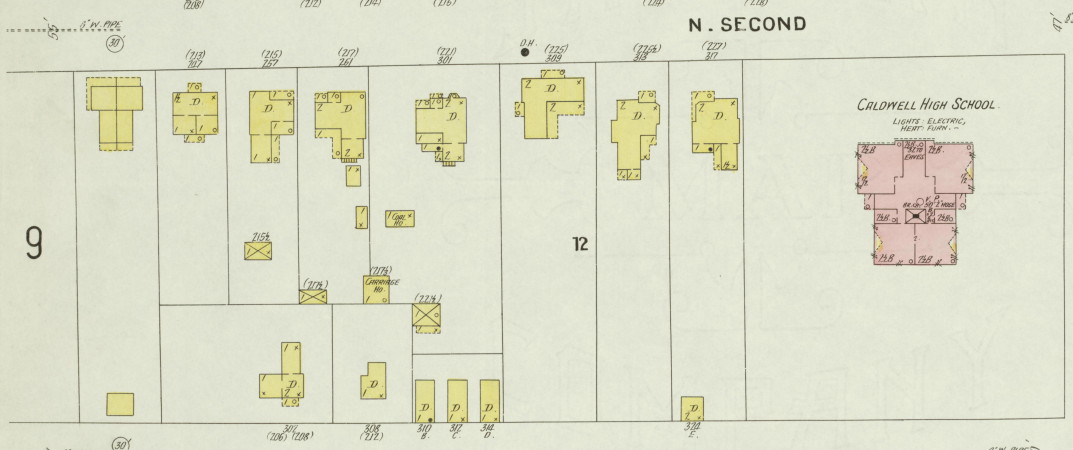
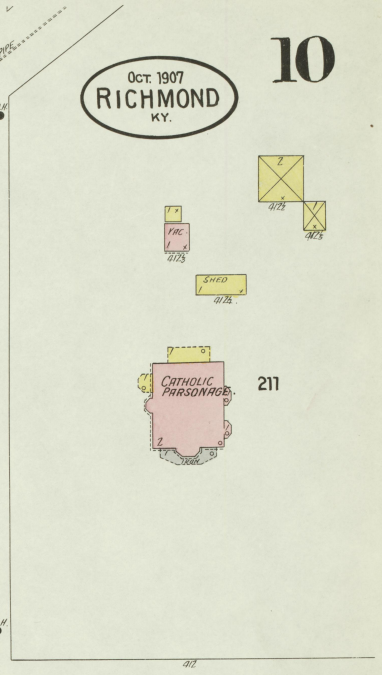
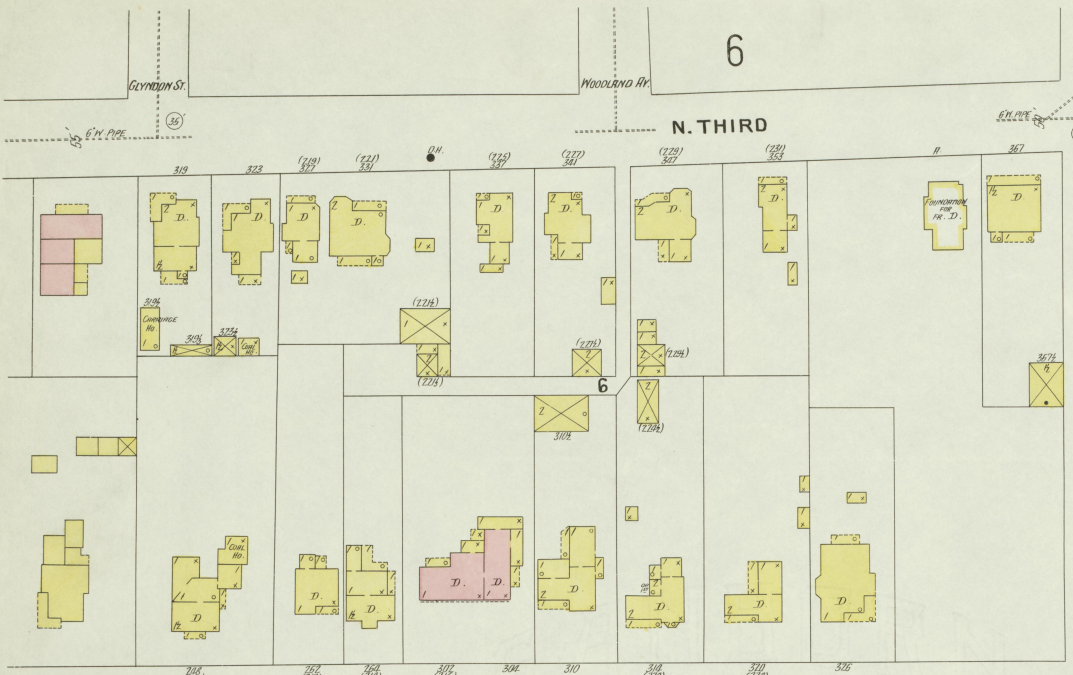
S. B. ST.

12

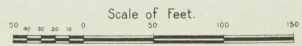
11

OCT. 1907
RICHMOND
KY.

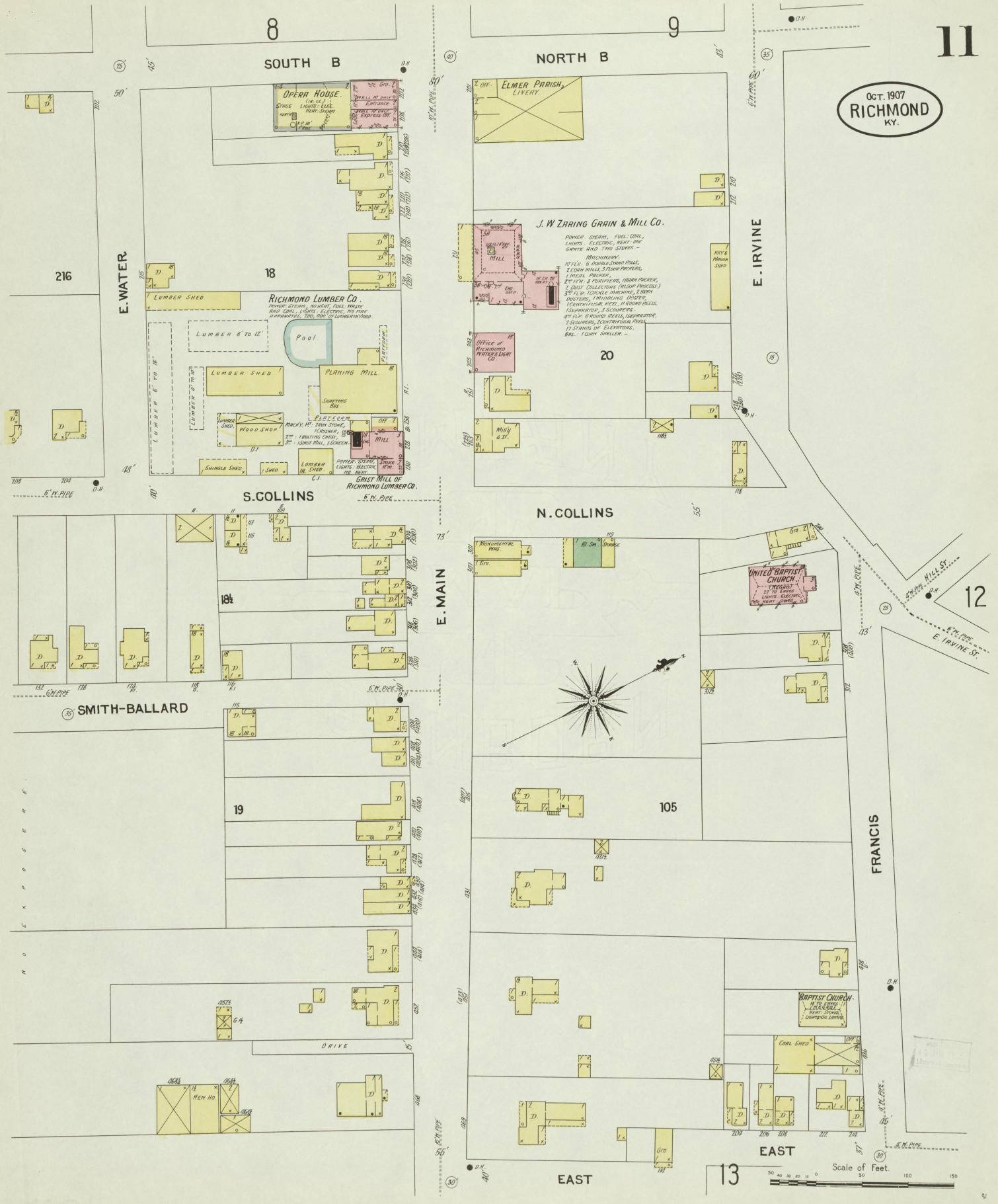
10



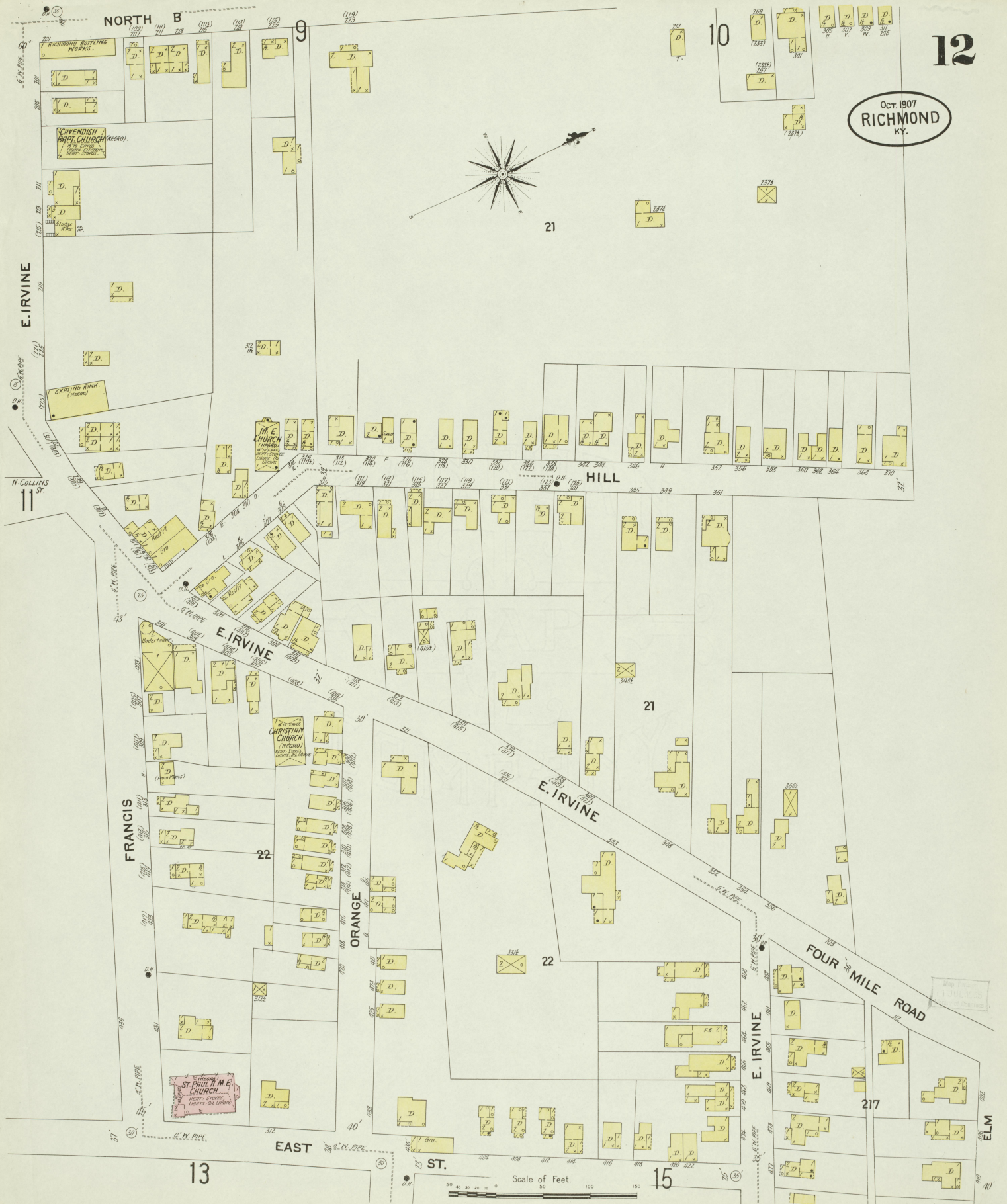
12



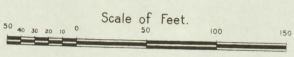
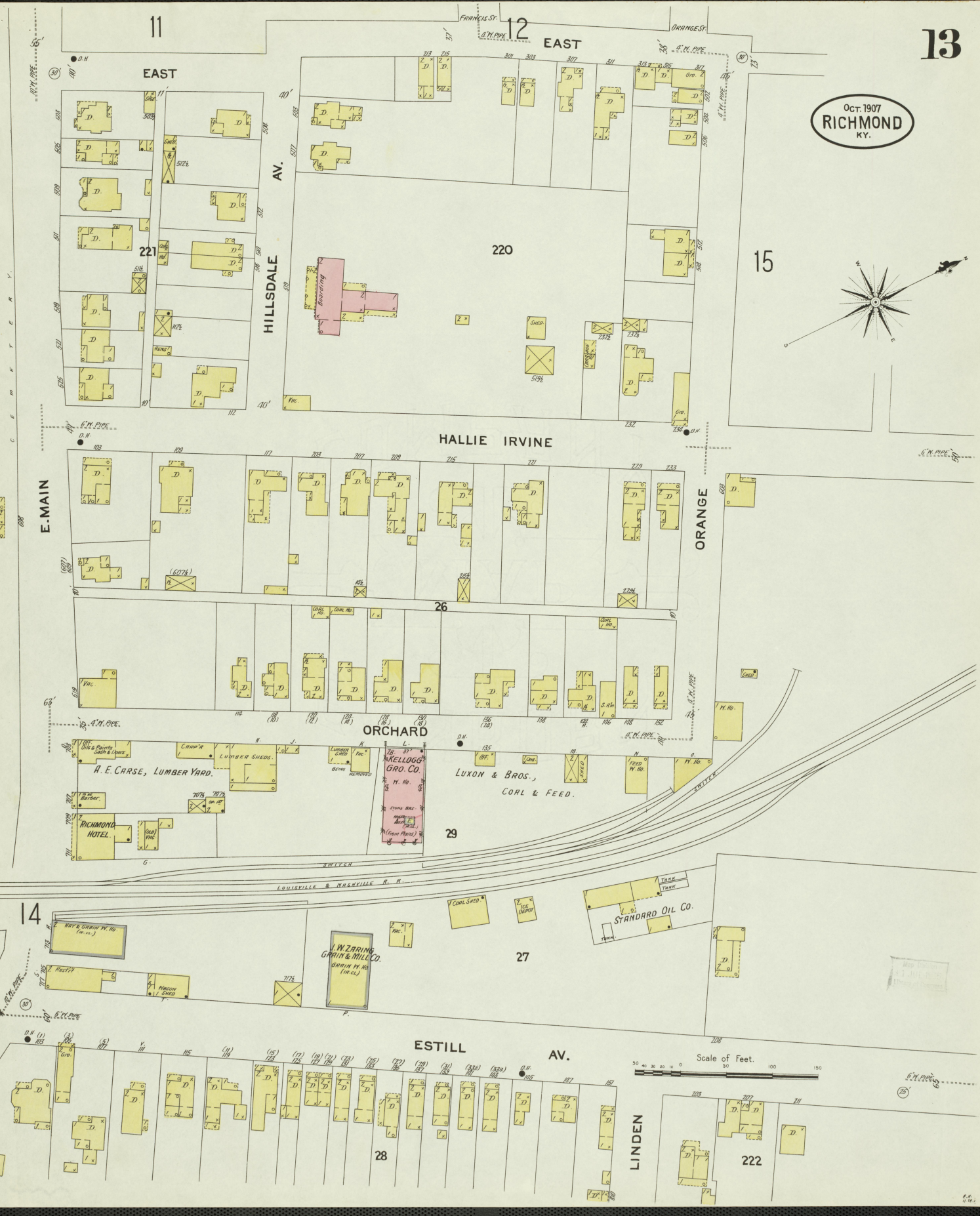
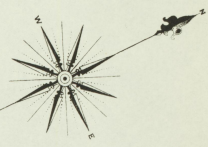
Oct. 1907
RICHMOND
KY.



Oct. 1907
RICHMOND
KY.



Oct. 1907
RICHMOND
KY.



13

14

OCT. 1907
RICHMOND
KY.

L. & N. PASSENGER DEPOT

L. & N. FREIGHT HO.
PLATFORM

LOUISVILLE & NASHVILLE R.R.

30

L. & N. ENGINE HO.
TURN TABLE

LETCHE AV.

E. MAIN

E. MAIN

S. FAIRVIEW

SKATING RINK
(10' CL.)

223

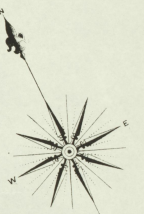
ALLEY

BIG HILL

RACE

31

AV.



224

HEATH

RICHMOND COLD STORAGE
& ICE CO.
POWER, STEAM,
FUEL, COALS,
LIGHTS, ELEV.
(100' HEAT)

225

NO EXPOSURE

N. MAPLE

(1890)
HIGH SCHOOL

Situated 1/4 Mile E. of
L. & N. Depot.

E. MAIN

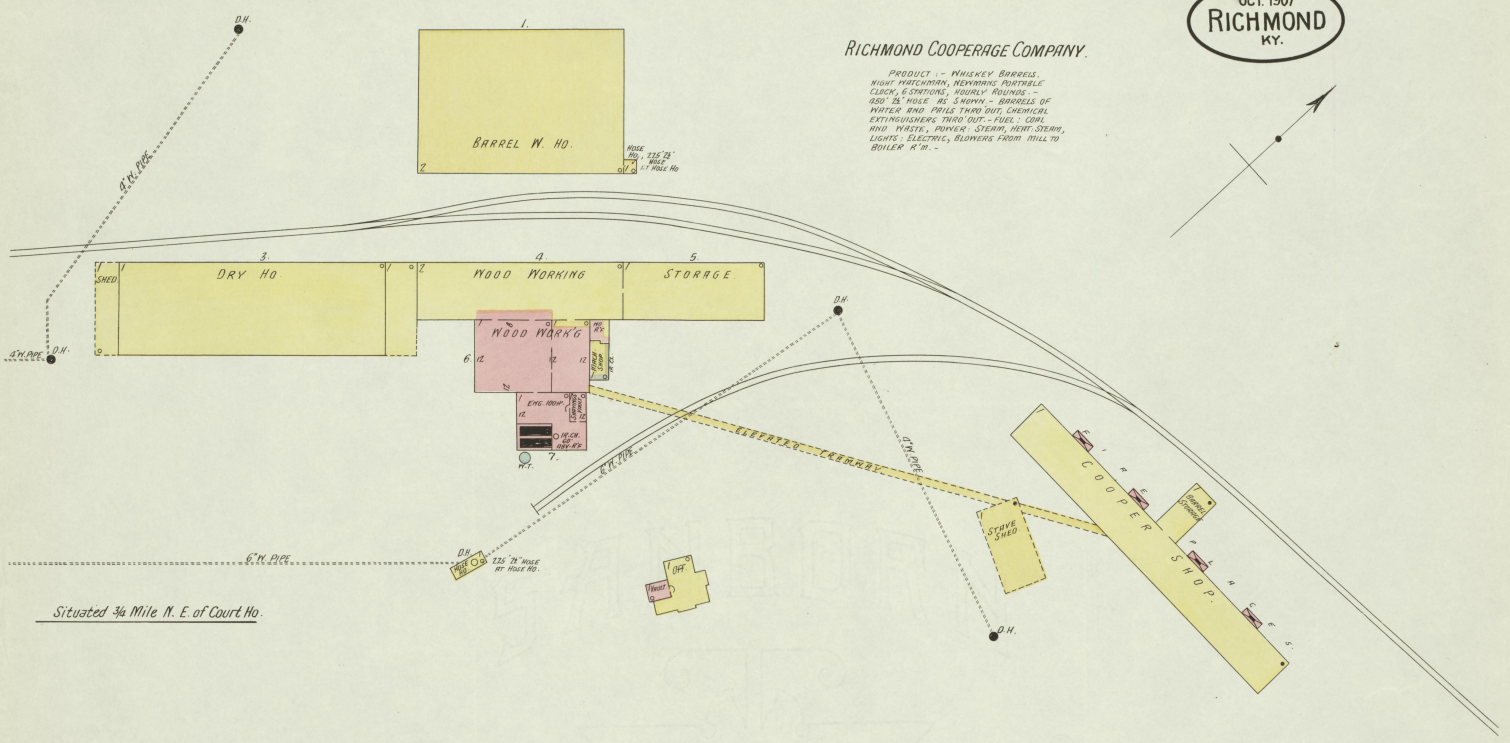
S. MAPLE ST.

Scale of Feet.
50 100 150

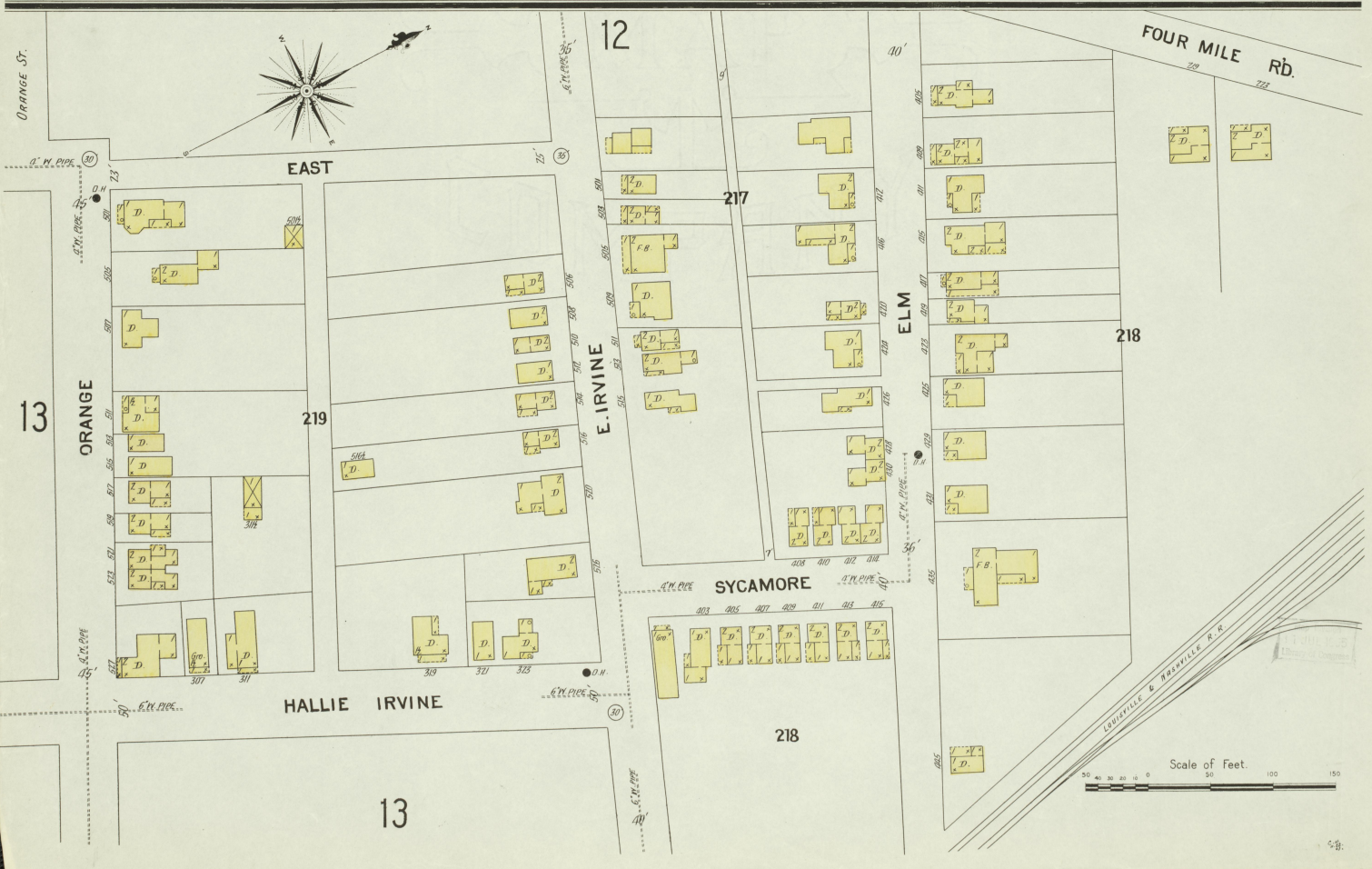
OCT 1907
RICHMOND
KY.

RICHMOND COOPERAGE COMPANY.

PRODUCTS - WHISKEY BARRELS,
MIGHT MATCHES, REPAIRING PANTSABLE
CLACKS & SHOVES, USUALLY ROUNDS -
AND 1/2 HOLE AS SHOWN - BARRELS OF
WATER AND PAILS THIN OIL, CHEMICAL
EXTINGUISHERS TARG-OUT - PILES, COAL
AND WASTE, POWER, STEAM, HEAT, STEAM,
LIGHTS, ELECTRIC, BURNERS FROM 1/4 TO
BOILER # 10.



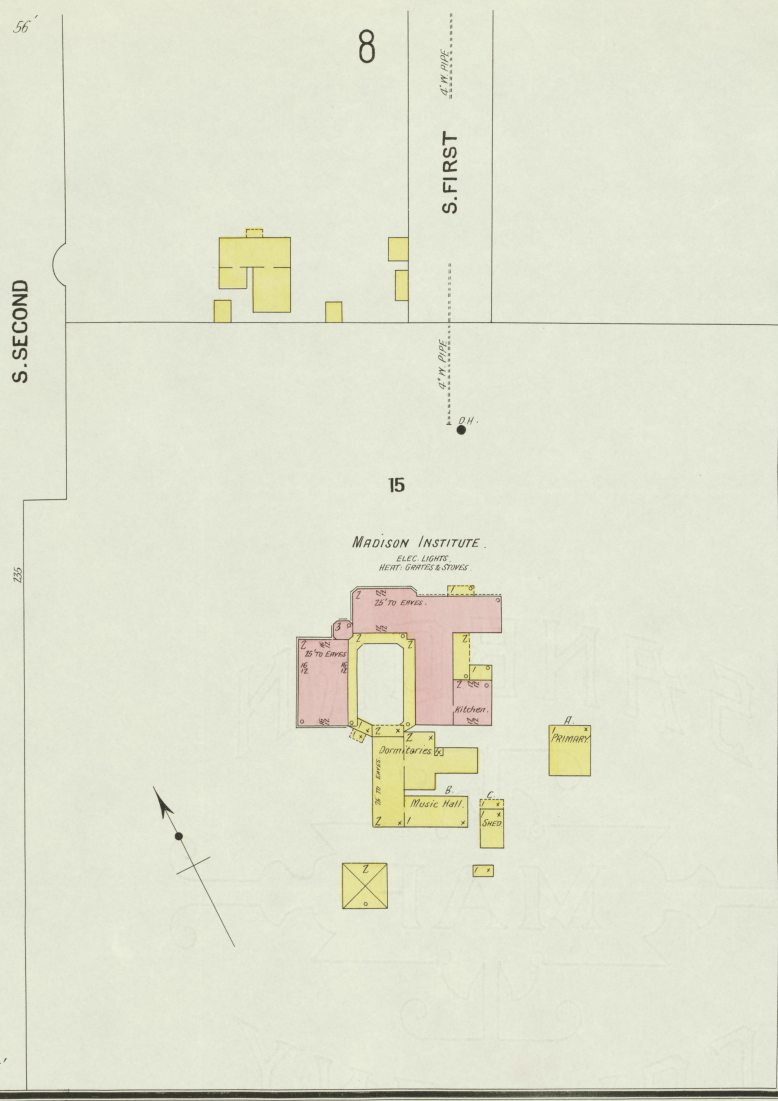
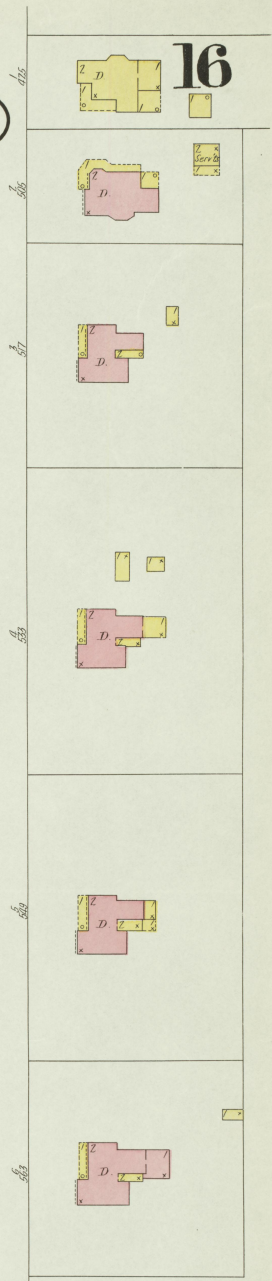
Situated 3/4 Mile N. E. of Court Ho



Scale of Feet.
0 20 40 60 80 100 120 140 150

Oct. 1907
RICHMOND
 KY.

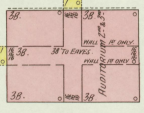
16



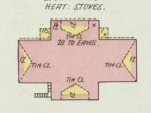
1/4 Mile S. of Court Ho.

EASTERN KENTUCKY STATE NORMAL SCHOOL.

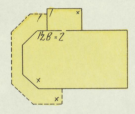
UNIVERSITY HALL.
 LIGHTS, ELEC.,
 HEAT, STOVES.



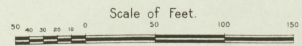
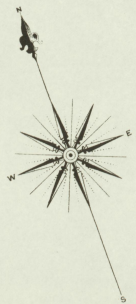
7. PREPARATORY SCHOOL.
 LIGHTS, ELEC.,
 HEAT, STOVES.



C. U. MILLER GYM.



6. MEMORIAL HALL.
 GAS LIGHTS,
 STEAM HEAT.

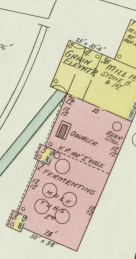
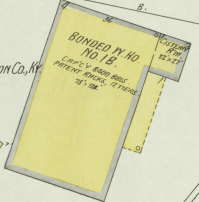


SILVER CREEK DISTILLERIES
SITUATED 8 MILES S.W. OF RICHMOND COURT HO.

OCT. 1907
RICHMOND
KY.

LANCASTER
PIKE

BERNHEIM DISTILLING CO.
WARWICK DISTILLERY
REGISTERED DISTILLERY NO. 1, 8TH DIST. MADISON CO., KY.
IN OPERATION FROM 12 TO 18 MONTHS OF THE YEAR.
CAPACITY 300 BUSNELS PER DAY.
WATERWORKS, PORTLAND CEMENT, ELECTRICITY,
STEAM, STEAM AND WATER, FUEL, COAL,
LIGHTS, SIGNAL, OIL, LANTERNS, - WHEELS, AT
1/2 P.M. 1/2 DAY, DOUBLE BOILER STEAM
HEATED AND HAND FIRED.
GRADE LEVEL.



COVERED BRIDGE

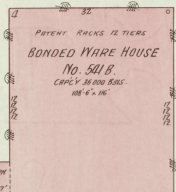
SILVER CREEK



RAIL BRADING & RAILROAD

KENTUCKY DISTILLERIES & WARE HO. CO.
W. S. HUME & CO., 1898 SILVER CREEK DISTILLERY.
REGISTERED DISTILLERY NO. 541, 8TH DISTRICT,
MADISON COUNTY, KY.

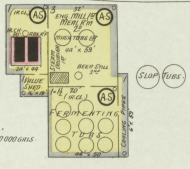
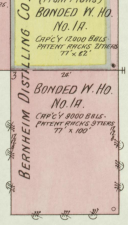
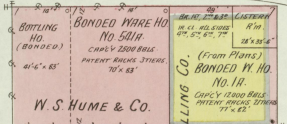
CAPACITY 400 BUSNELS PER DAY, IN OPERATION
FROM 3 TO 6 MONTHS EACH YEAR.
TIGHT WATERWORKS, NO CLOCK, LIGHTS, LEAD OIL,
POWER, STEAM, FUEL COAL, STEAM HEAT IN
KIND, HULL - AUTOMATIC SPRINKLES IN BOLLER
ROOM AND DISTILLERY, GARNETT DRY SYSTEM,
SEE HERE: ONLY QUALITY FROM 80,000 GALS. PER
100' HIGH - DOUBLE STEAM HEATED, UNDESIGNED.



COOPER SHOP

LOUISVILLE & NASHVILLE R. R.

TOWN BRIDGE



Silver Creek.

