



**UK**  
UNIVERSITY OF  
KENTUCKY

# Fact Booklet

2009-2010

# Table of Contents

Letter from President Lee T. Todd, Jr.	2-3	Grant and Contract Awards	29
UK Mission and Vision	4	Research and Development	30
Enrollment	5-9	University Endowment	31
First-year Student Profile	10-11	New and Renovated Facilities	32-33
Retention and Graduation Rates	12-13	Land and Space	34
Degrees Conferred	14-16	General Equipment Inventories	35
Annual Tuition and Fees	17	Library Collections	36
Full-time Employees	18-19	Benchmark Institutions	37
Alumni and Student Origin Maps	20-21	Administrative Organization	38
Faculty Statistics	22-24	Board of Trustees	39
Faculty Salaries	25	Administrative History	40
Budgeted Revenue and Expenditures	26-27	UK Values	41
Private Giving	28		

January 2010

In compliance with KRS 164.250, I am pleased to provide you with the 2009-2010 Fact Booklet, a collection of current facts and statistics about people and programs at the University of Kentucky. Many items in this booklet will be of interest to our stakeholders and the general public, including statistics on enrollments, retention, research expenditures, and faculty salaries. A summary of the 2009-2010 Operating and Capital Budget also is presented.

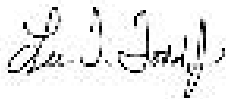
The University of Kentucky is proud to have attracted one of its most talented and diverse classes of first-year students. More than 12,000 students applied for admission to the fall 2009 semester, a 9.7 percent increase from the previous year and a new University record. The University established another first when it enrolled over 400 freshmen who had previously attended either the Governor's Scholars Program or the Governor's School for the Arts. Over 400 African American students began their studies at UK last fall, setting a new record. Currently, black students comprise 6.5 percent of the total headcount, another historical high.

A number of buildings are in the process of being constructed or renovated to create the space needed for our teaching, research, and service programs. These facilities include a new Biological/Pharmaceutical Complex and our

new Patient Care Facility. We also are in the process of expanding or upgrading several older facilities. A few of these projects include: the Livestock Disease Diagnostic Lab, the Center for Applied Energy Research, and the Schmidt Vocal Arts Center. Other facilities in the planning and design phase include the Gatton College Building Complex, the Law School Building, and the expansion of the Ophthalmology Clinic at the Kentucky Clinic.

The economic crisis at the state and national level has presented many challenges to our institution. UK has affirmed its long-standing commitment to becoming a Top 20 university, despite the gloomy fiscal situation confronting our nation. Citizens of this state look to the University of Kentucky to make the Commonwealth a better place to live and work and raise families. We remain committed to improving the quality of life of our citizens by addressing Kentucky's critical social, economic, and health-related problems.

Sincerely,

A handwritten signature in cursive script that reads "Lee T. Todd, Jr.".

Lee T. Todd, Jr.  
President

## MISSION

The University of Kentucky is a public, land grant university dedicated to improving people's lives through excellence in education, research and creative work, service, and health care. As Kentucky's flagship institution, the University plays a critical leadership role by promoting diversity, inclusion, economic development, and human well-being.

## VISION

The University of Kentucky will be one of the nation's 20 best public research universities.

-- Adopted by the Board of Trustees, June 9, 2005

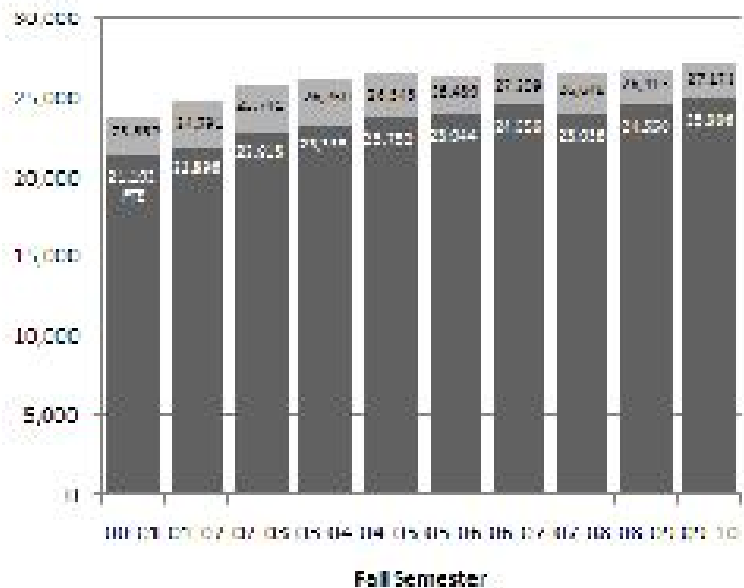
# ENROLLMENT - Headcount and Full-time Equivalent

## Fall 2009 Headcount

Level	Full-time	Part-time	Total
Undergraduate	17,619	1,564	19,183
Graduate*	5,654	1,458	7,112
<b>Subtotal (IPEDS)</b>	<b>23,273</b>	<b>3,022</b>	<b>26,295</b>
UG Auditors	0	34	34
Postdoctoral	257	0	257
House Staff	585	0	585
<b>Total (CPE)</b>	<b>24,115</b>	<b>3,056</b>	<b>27,171</b>

FTE calculations have been revised in accordance with CPE guidelines. The new method uses a formula that weights the number of student credit hours by students' degree level.

\*Note: Beginning in 2005-10, federal reporting guidelines for enrollments eliminated the first-professional degree category and established a new Doctor's Degree - Professional Practice category. These degree programs are now subsumed under the graduate classification.



## ENROLLMENT - Fall 2009 at a Glance

		<b>% of Total</b>
Men	13,226	48.7
Women	13,945	51.3
<b>Total</b>	<b>27,171</b>	<b>100.0</b>

Full-time	24,115	88.8
Part-time	3,056	11.2
<b>Total</b>	<b>27,171</b>	<b>100.0</b>

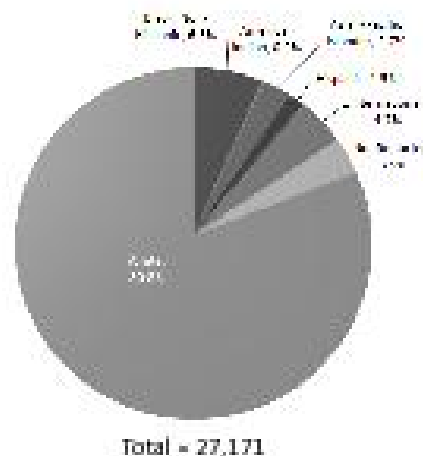
Resident	20,604	75.8
Non-resident	6,567	24.2
<b>Total</b>	<b>27,171</b>	<b>100.0</b>

		<b>% of Total</b>
Freshmen	5,376	19.8
Sophomores	4,135	15.2
Juniors	4,129	15.2
Seniors	5,166	19.0
UG Non-degree	411	1.5
<b>Subtotal Undergraduate</b>	<b>19,217</b>	<b>70.7</b>
Master/Specialist	2,645	9.7
Doctoral*	4,122	15.2
Graduate Non-degree	345	1.3
<b>Subtotal Graduate</b>	<b>7,112</b>	<b>26.2</b>
House Staff/Post Doctoral	842	3.1
<b>Total</b>	<b>27,171</b>	<b>100.0</b>

\*Note: Beginning in 2009-10, federal reporting guidelines for enrollments eliminated the first-professional degree category and established a new Doctor's Degree - Professional Practice category. These degree programs are included under the Doctoral classification.

## ENROLLMENT - Fall 2009 by Race/Ethnicity

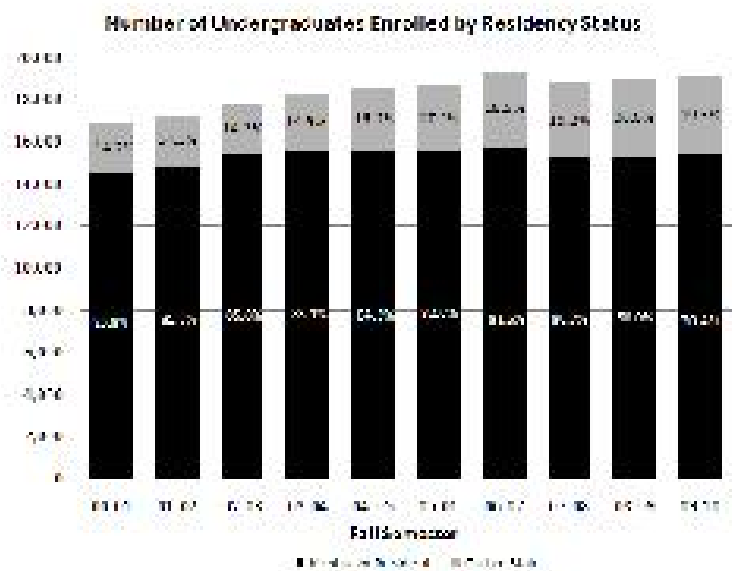
	<u>Undergrad</u>	<u>Grad.</u>	<u>Post</u> <u>Doc.</u>	<u>House</u> <u>Staff</u>	<u>Total</u>
Black, Non-Hispanic	1,381	378	5	9	1,773
Amer. Indian/ Alaskan Native	43	16	0	0	59
Asian/Pacific Islander	456	202	28	58	744
Hispanic	293	96	2	8	399
International	259	863	142	11	1,273
Not Reported	485	293	18	167	963
White	16,300	5,266	62	332	21,960
<b>Total</b>	<b>19,217</b>	<b>7,112</b>	<b>257</b>	<b>585</b>	<b>27,171</b>





# UNDERGRADUATES - by Residency Status

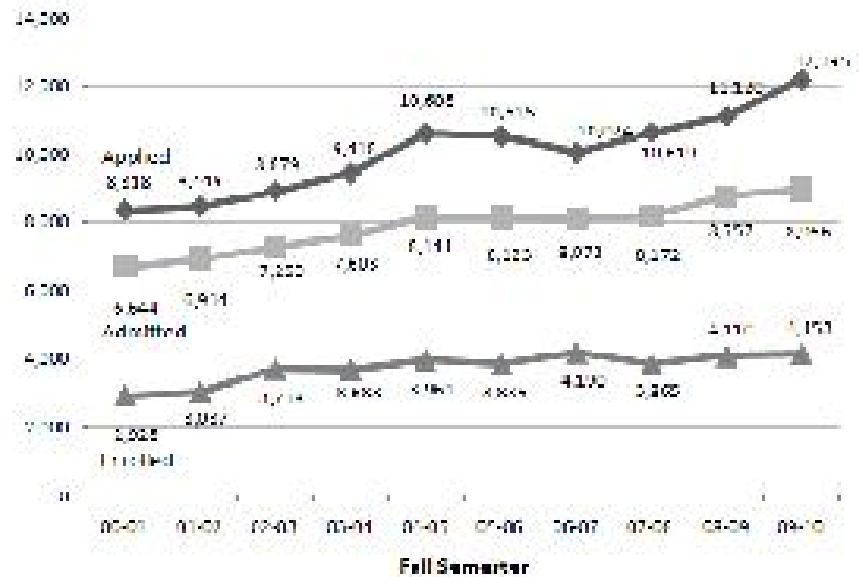
<u>Year</u>	<u>Kentucky Residents</u>	<u>Out-of-State Students</u>
Fall 2009	15,457	3,760
Fall 2008	15,197	3,791
Fall 2007	15,196	3,634
Fall 2006	15,757	3,571
Fall 2005	15,481	3,251
Fall 2004	15,587	2,905
Fall 2003	15,486	2,704
Fall 2002	15,348	2,530
Fall 2001	14,820	2,464
Fall 2000	14,499	2,400



# APPLIED, ADMITTED and ENROLLED

## First-year Students Fall 2009

Applied	12,195
Admitted	8,966
Enrolled	4,153
Admit. Rate	73.5%
Yield Rate	46.3%

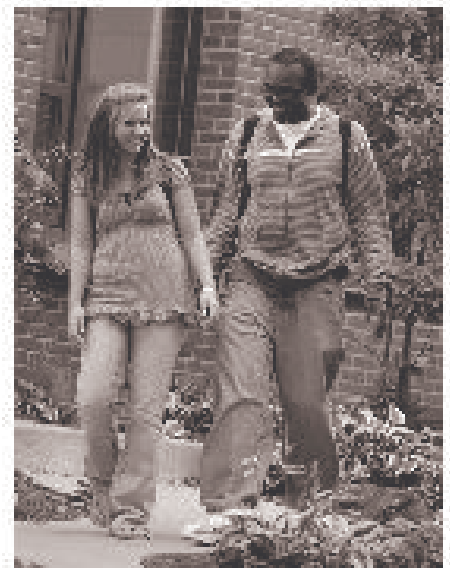


# FIRST-YEAR STUDENT PROFILE

In fall 2009, the University enrolled a record number of African-American and Governor's Scholars/Governor's School for the Arts students.

	2005	2006	2007	2008	2009
Total	3,835	4,190	3,865	4,110	4,153
Female	2,050	2,237	2,021	2,099	2,118
African-American	143	294	255	347	403
Out-of-State	997	1,108	1,015	999	897
International	16	14	20	32	44
Full-Time	3,829	4,118	3,837	4,079	4,111
Governor's Scholars and Governor's School for the Arts	304	354	348	389	404
Merit Scholars	40	32	28	32	31
Valedictorians	137	122		133	141

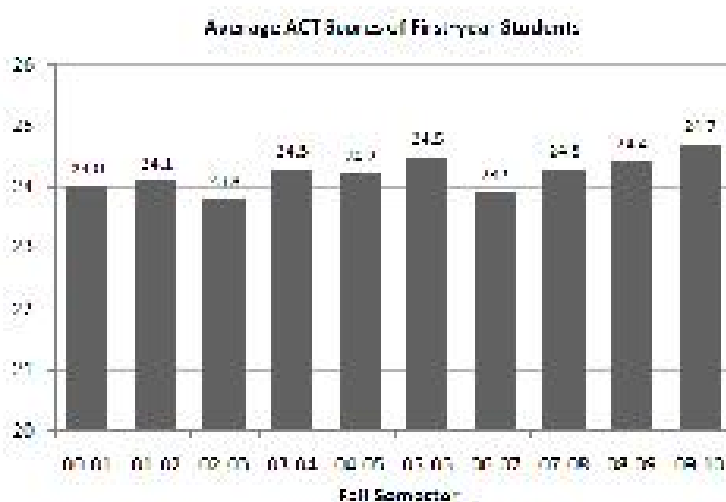
Note: Valedictorian information was not available for the 2007 cohort.



## ACT Scores - Entering First-year Students

<u>Year</u>	<u>N</u>	<u>Mean</u>	<u>25th/75th Percentile</u>
Fall 2009	3,906	24.7	22/28
Fall 2008	3,825	24.4	22/27
Fall 2007	3,532	24.3	21/27
Fall 2006	3,864	23.9	21/26
Fall 2005	3,453	24.5	22/27
Fall 2004	3,609	24.2	21/27
Fall 2003	3,385	24.3	22/27
Fall 2002	3,391	23.8	21/26
Fall 2001	2,881	24.1	21/26
Fall 2000	2,755	24.0	21/26

Note: Some students submit SAT scores rather than ACT scores. These students' scores are not reflected in the table and graph.



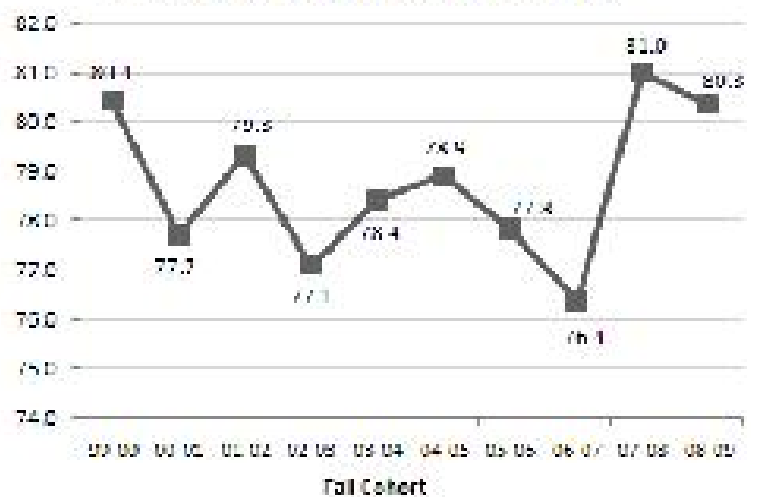
# RETENTION RATE

## First-to-second Year Retention Rate\*

Cohort	Overall	Black,		Other
		White	Non-Hispanic	
2008	80.3	80.5	75.3	84.4
2007	81.0	81.2	80.0	79.5
2006	76.4	76.3	76.6	77.7
2005	77.8	78.0	76.1	76.4
2004	78.9	79.6	69.0	80.5
2003	78.4	78.4	72.8	83.1
2002	77.1	77.3	78.0	71.5
2001	79.3	79.3	77.5	81.1
2000	77.7	77.7	77.7	79.7
1999	80.4	80.7	77.2	78.0

\*Retention rates apply to first-time, full-time, degree-seeking students.

First-to-Second Year Overall Retention Rate



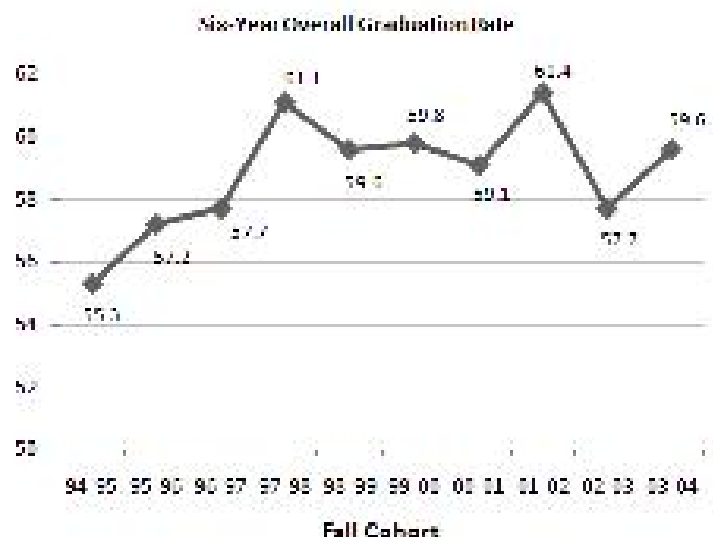
# GRADUATION RATE

## Six-year Graduation Rate\*

Cohort	Overall	Black		Other
		White	Non-Hispanic	
2003	59.6	60.5	42.9	62.8
2002	57.7	58.6	47.6	51.1
2001**	61.4	62.5	50.3	49.6
2000	59.1	60.6	45.0	50.5
1999	59.8	60.8	46.2	57.1
1998	59.6	60.2	49.7	61.4
1997	61.1	62.2	49.0	59.4
1996	57.7	59.1	43.2	53.9
1995	57.2	58.2	38.5	63.2
1994	55.3	57.1	35.4	48.2

\*Graduation rates apply to first-time, full-time, degree-seeking students; the 2009 cohort numbers are preliminary.

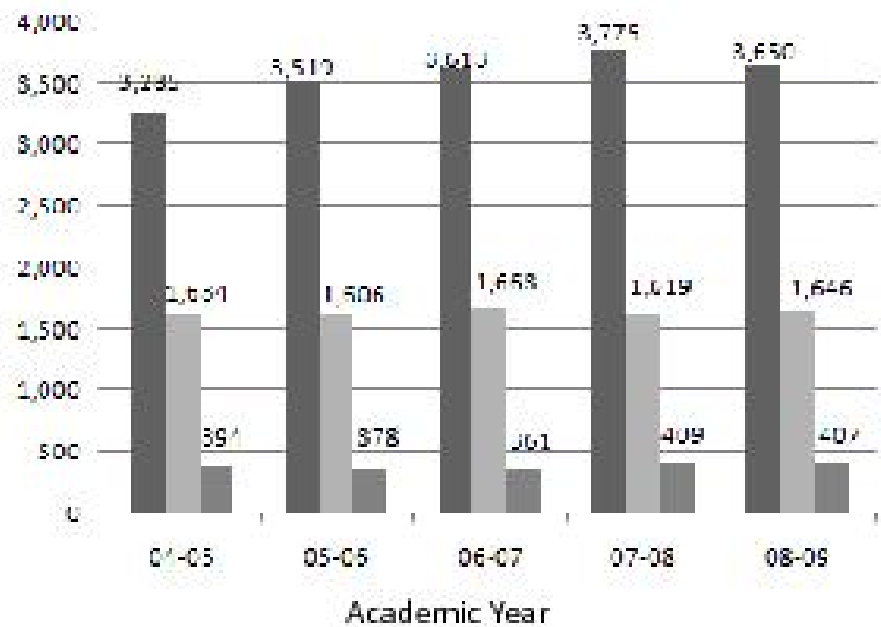
\*\*Reflects a correction made after IPEDS submission.



# DEGREES CONFERRED

## 2008-2009

Baccalaureate	3,650
Graduate	1,646
First Professional	407



## DEGREES CONFERRED - By College

**2008-2009**

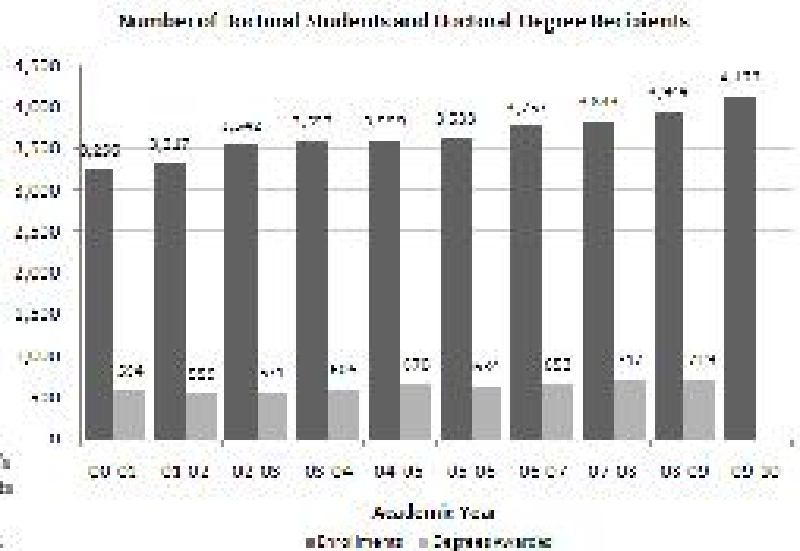
College	Bacc.	Mast.*	Doc.	First Prof.	College	Bacc.	Mast.*	Doc.	First Prof.
Agriculture	513	73	24	-	Grad. School	-	78	4	-
Arts & Sciences	1,132	117	70	-	Health Sciences	57	129	34	-
Business & Economics	625	175	12	-	Law	-	-	-	134
Comm. & Info. Studies	348	93	3	-	Medicine	-	16	47	94
Dentistry	-	5	-	58	Nursing	107	51	9	-
Design	70	9	-	-	Pharmacy	-	-	10	121
Education	314	230	44	-	Public Health	-	43	8	-
Engineering	279	156	29	-	Social Work	58	126	1	-
Fine Arts	147	33	17	-	<b>Total</b>	<b>3,650</b>	<b>1,334</b>	<b>312</b>	<b>407</b>

\* Includes Specialist degrees



# DOCTORATES - Enrollments and Degrees Awarded

Year	Fall Enrollment	Degrees Awarded
2009-10	4,122	
2008-09	3,949	719
2007-08	3,843	717
2006-07	3,757	653
2005-06	3,633	634
2004-05	3,599	670
2003-04	3,593	605
2002-03	3,542	571
2001-02	3,317	559
2000-01	3,256	594



Note1: Federal reporting guidelines have eliminated the first-professional degree category and established a new Doctor's Degree - Professional Practice category. Doctoral enrollments and degree recipients have been revised to include enrollments and degrees from former first-professional programs.

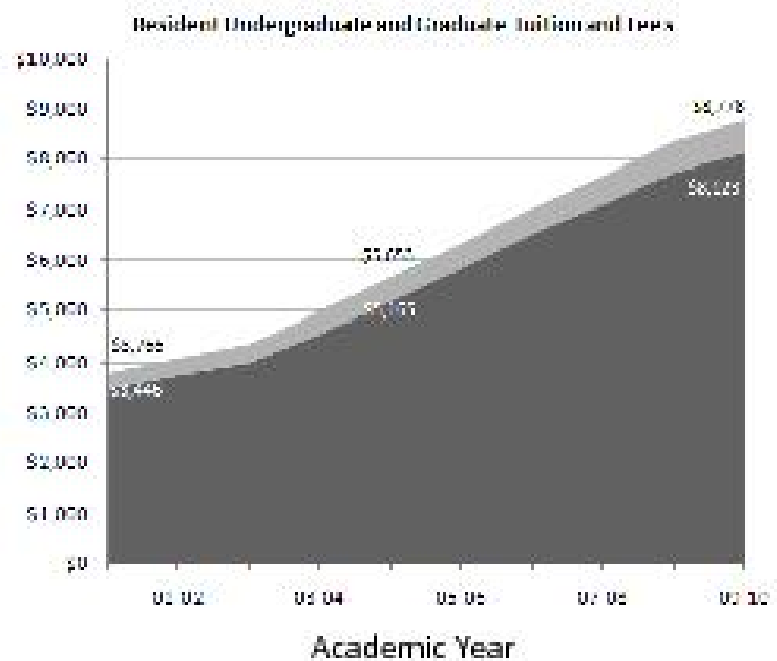
Note2: Enrollments are based on the fall semester of a given academic year. The number of degree recipients for 2008-10 is not yet available.

# ANNUAL TUITION and FEES

## 2009-2010

<u>Resident</u>	<u>Tuition</u>	<u>Fees</u>
Graduate	\$ 7,869	\$ 909
Undergraduate		
- Lower Division	7,214	909
- Upper Division	7,449	909
<u>Non-resident</u>	<u>Tuition</u>	<u>Fees</u>
Graduate	\$ 17,180	\$ 909
Undergraduate		
- Lower Division	15,769	909
- Upper Division	15,992	909

Note: Beginning in 2004-05, undergraduates in upper and lower divisions are charged different rates of tuition. The tuition rate in the graph reflects the rate for lower division students.



# FULL-TIME EMPLOYEES

**2008-2009**

Full-Time Employees	President's Office	Provost			Health Affairs	Total	% Total
		Educational Units	Administration/Support	Finance and Administration			
Exec./Admin./Managerial	35	163	100	82	103	483	4.1%
Faculty	0	2,033	0	0	0	2,033	17.1%
Library Faculty	0	63	0	0	0	63	0.5%
Other Professional	187	1,680	480	336	1,092	3,775	31.8%
Secretarial/Clerical	79	1,303	337	201	561	2,481	20.9%
Tech./Paraprofessional	22	859	117	154	327	1,479	12.4%
Skilled Crafts	6	29	7	161	6	209	1.8%
Service/Maintenance	13	189	140	655	357	1,365	11.5%
<b>Total</b>	<b>342</b>	<b>6,319</b>	<b>1,181</b>	<b>1,600</b>	<b>2,446</b>	<b>11,888</b>	<b>100.0%</b>

Note 1: Percentages may not total properly due to rounding.

Note 2: The President's Office includes staff from the Athletics Department and the Offices of the General Counsel, Institutional Advancement, and Commercialization and Economic Development.

Note 3: Starting in 2008-07 Library faculty are reported to the federal government in the Other Professional Category. For this publication, Library faculty are classified separately.

# FULL-TIME EMPLOYEE DEMOGRAPHICS

**2008-2009**

<b>Full-time Employees</b>	<b>Black, Non-Hispanic</b>	<b>American Indian/ Alaskan Native</b>	<b>Asiatic/ Pacific Islander</b>	<b>Hispanic</b>	<b>White</b>	<b>Female</b>	<b>Male</b>
Exec./Admin./Managerial	23	1	8	3	448	234	249
Faculty	81	1	237	32	1,682	699	1334
Library Faculty	3	0	1	0	59	49	14
Other Professional	153	5	192	29	3,396	2367	1408
Secretarial/Clerical	314	1	27	8	2,131	2207	274
Tech./Paraprofessional	137	1	61	18	1,262	885	594
Skilled Crafts	26	0	3	0	180	4	205
Service/Maintenance	450	1	20	9	885	565	800
<b>Total</b>	<b>1,187</b>	<b>10</b>	<b>549</b>	<b>99</b>	<b>10,043</b>	<b>7,010</b>	<b>4,878</b>

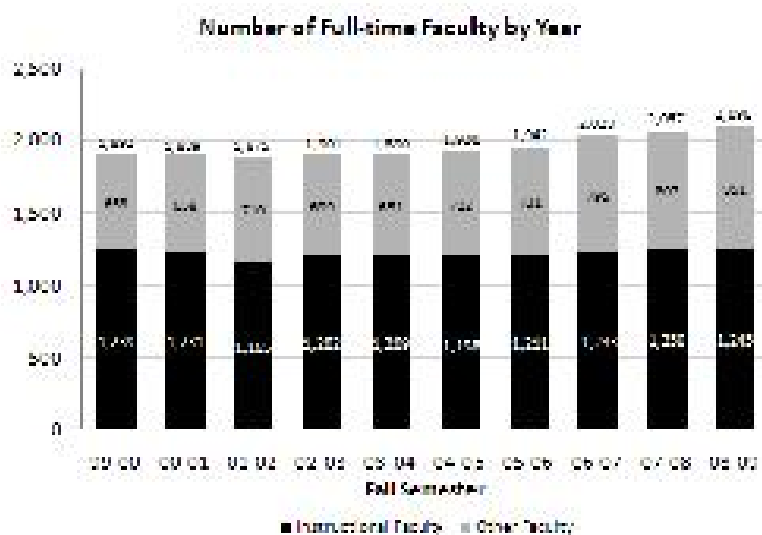




## FULL-TIME FACULTY - Historical Trends

	Instructional Faculty	Other Faculty
2008-2009	1,245	851
2007-2008	1,250	807
2006-2007	1,233	795
2005-2006	1,211	731
2004-2005	1,198	722
2003-2004	1,209	681
2002-2003	1,202	699
2001-2002*	1,165	710
2000-2001	1,231	658
1999-2000	1,239	653

Note: Beginning in 2001-2002, changes in the federal definition of 'Instructional Faculty' excluded 'Extension Faculty,' however, Lecturers are now included. 'Other Faculty' now includes those with Extension, Clinical, Research and Library Faculty series designations.



# FACULTY DEMOGRAPHICS

## Tenured and Tenure-track Faculty 2008-2009

	Black, Non-Hispanic		American Indian/ Alaskan Native		Asian/ Pac. Islander		Hispanic		White	
	M	F	M	F	M	F	M	F	M	F
Full-Time Faculty										
Professors/Lib. I	4	4	0	0	55	6	4	2	457	108
Associate Professors/Lib. II	21	11	1	0	28	12	2	2	293	188
Assistant Professors/Lib. III	11	16	0	0	47	25	5	7	174	115
Instructors/Lib. IV	0	1	0	0	0	0	0	0	2	4
<b>Total</b>	<b>36</b>	<b>32</b>	<b>1</b>	<b>0</b>	<b>130</b>	<b>43</b>	<b>11</b>	<b>11</b>	<b>926</b>	<b>415</b>



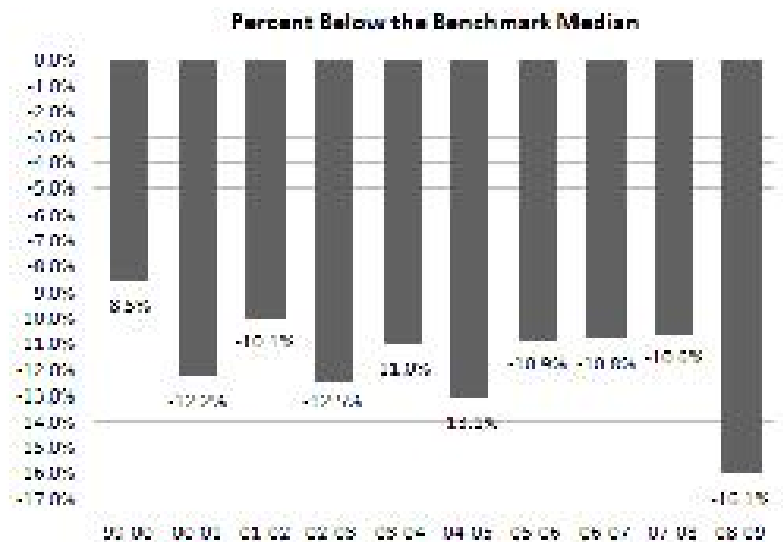
## FACULTY - By Rank and Title Series: 2008-2009

<b>Rank</b>	<b>Tenured/Tenure Track</b>				<b>Total</b>
	<b>Regular</b>	<b>Librarian</b>	<b>Extension</b>	<b>Spec. Title</b>	
Professors/Lib. I	517	23	39	61	640
Associate Professors/Lib. II	375	28	19	136	558
Assistant Professors/Lib. III	306	6	15	73	400
Instructors/Lib. IV		6		1	7
<b>Total</b>	<b>1,198</b>	<b>63</b>	<b>73</b>	<b>271</b>	<b>1,605</b>

<b>Rank</b>	<b>Non-tenure Track</b>				<b>Total</b>
	<b>Clinical</b>	<b>Research</b>	<b>Lecturer</b>	<b>Other</b>	
Professors	18	7		5	30
Associate Professors	51	12		1	64
Assistant Professors	177	66		5	248
Instructors	24			19	43
Senior Lecturers			15		15
Lecturers			91		91
<b>Total</b>	<b>270</b>	<b>85</b>	<b>106</b>	<b>30</b>	<b>491</b>

# FACULTY SALARIES

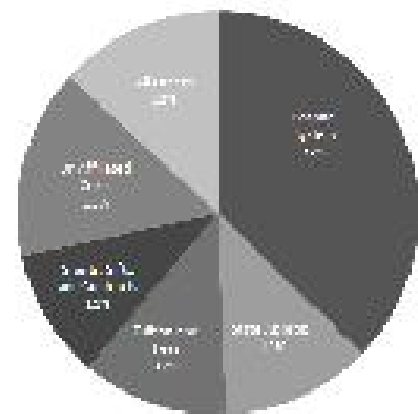
Fall	All-ranks Average Salary	Benchmark Median Salary
2008*	\$ 80,813	\$ 96,312
2007	79,350	88,787
2006	76,065	85,300
2005	73,685	82,664
2004	71,026	81,713
2003	69,911	78,594
2002	66,953	76,547
2001	66,713	74,184
2000	64,842	73,892
1999	62,314	68,138



\*Note: Beginning in 2008-09, the Top 20 Business Plan benchmark institutions replaced the 15 CPE benchmark institutions in salary comparisons.

## REVENUE (In Millions)

Source of Funds	Revised Budget	Budget
	2008-09	2009-10
State Appropriation	\$321.5	\$294.1
State Fiscal Stabilization Funds	0.0	21.1
Tuition and Fees	265.3	285.2
County Appropriations	15.3	15.9
Endowment and Investment Income	34.9	30.1
Federal Governmental Appropriations	16.6	16.5
Gifts, Grants, and Contracts	227.9	254.5
Sales and Services	85.8	82.7
Transfers	49.8	59.9
Fund Balances	103.2	95.7
UK Affiliated Corporations	353.5	368.4
Hospital System	753.2	906.2
<b>Total</b>	<b>\$2,227.0</b>	<b>\$2,430.3</b>



2009-2010 Budget

## EXPENDITURES (In Millions)

<u>Program</u>	<u>Revised Budget</u> <u>2008-09</u>	<u>Budget</u> <u>2009-10</u>
Instruction	\$ 341.6	\$ 340.6
Research	281.6	292.9
Public Service	281.8	297.3
Libraries	25.0	26.0
Academic Support	86.8	89.6
Student Services	28.4	30.8
Institutional Support	110.2	116.3
Operations and Maintenance	61.8	64.2
Student Financial Aid	92.6	97.6
<b>Auxiliary Enterprises</b>		
Operations	126.0	128.9
Mandatory Transfers	45.1	61.6
Hospital	746.1	884.5
<b>Total</b>	<b>\$ 2,227.0</b>	<b>\$ 2,430.3</b>

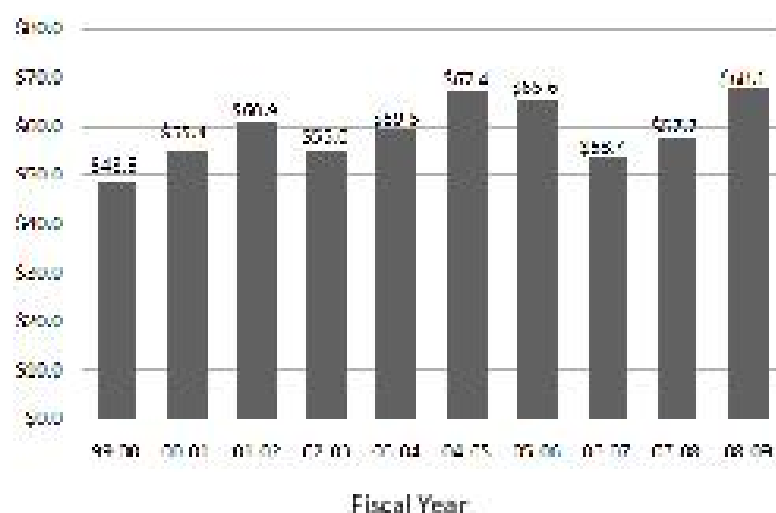
<u>Category</u>	<u>Revised Budget</u> <u>2008-09</u>	<u>Budget</u> <u>2009-10</u>
Personnel Services	\$ 1,095.7	\$ 1,114.0
Operating Expenses	1,032.0	1,098.8
Capital Outlay	54.2	155.9
Mandatory Transfers	45.1	61.6
<b>Total</b>	<b>\$ 2,227.0</b>	<b>\$ 2,430.3</b>

## PRIVATE GIVING (In Millions)

### Fiscal Year 2008-2009

Alumni	\$ 16.6
Non-alumni	13.4
Corporations	14.1
Foundations	9.8
Trusts/Associations	14.1
<b>Total</b>	<b>\$ 68.1</b>

Note: With the transfer of LCC to the KCTCS in 2003-04 FY, gifts to LCC stopped being reflected in UK's Private Giving statistics.



## GRANT and CONTRACT AWARDS (In Millions)

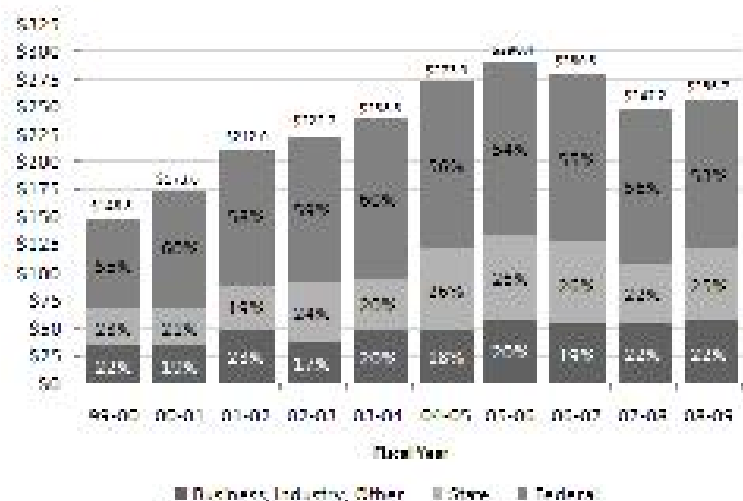
### 2008-2009

#### By Category of Support

Instruction	\$ 12.6
Research	180.6
Public Service	62.0
Other	1.5
<b>Total</b>	<b>\$ 256.7</b>

#### By Source

Federal	53%
State	25%
Business, Industry, Other	22%



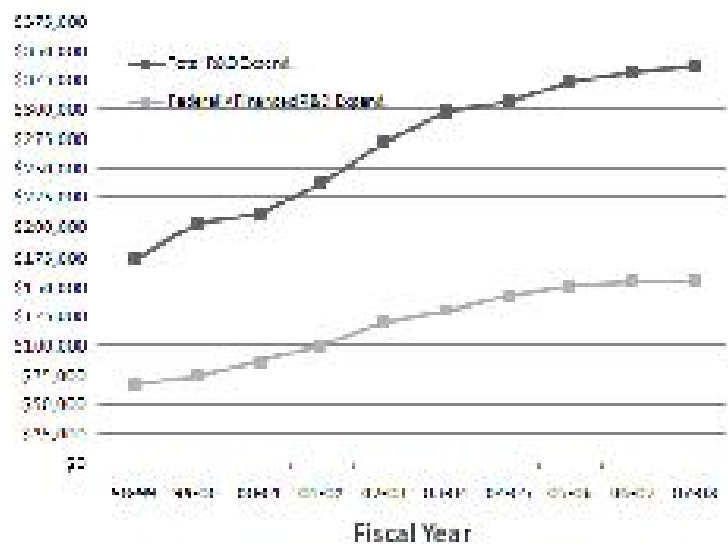
Note: With the transfer of LCC to the KCES in 2008-04 FY awards to LCC stopped being reflected in UK's Grant and Contract Awards statistics.

## RESEARCH and DEVELOPMENT (In Thousands)

Fiscal Year	Total R&D Expenditures*	Federally Financed R&D Expenditures*
2008	\$ 336,669	\$ 154,811
2007	331,606	154,688
2006	323,958	151,238
2005	306,653	142,794
2004	297,610	129,887
2003	272,062	120,003
2002	236,275	100,426
2001	211,721	86,239
2000	202,392	73,858
1999	174,034	66,184

\*As reported to the National Science Foundation for science and engineering disciplines.

Research and Development Expenditures

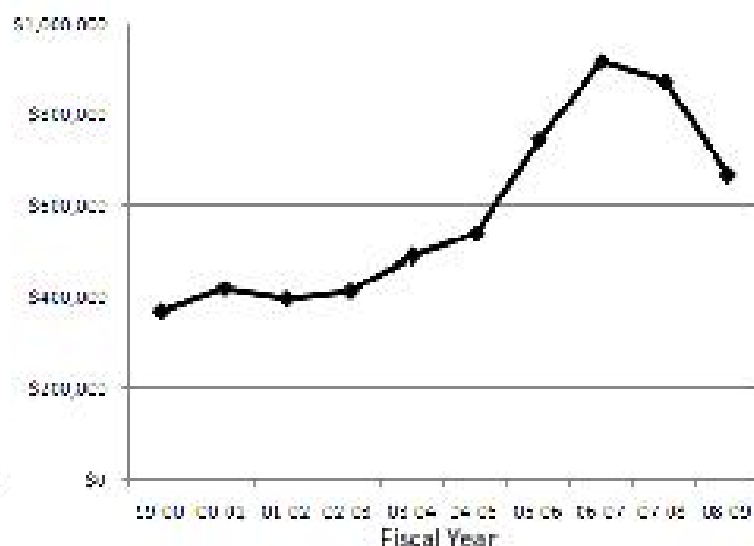


# UNIVERSITY ENDOWMENT (In Thousands)

<u>Fiscal Year</u>	<u>Market Value</u>
2009	\$ 668,008
2008	871,861
2007	916,590
2006	746,114
2005	538,384
2004	491,058
2003	414,328
2002	399,030
2001	420,838
2000	371,373

Note: In 2006, the Chandler Medical Center University Hospital Quasi-Endowment Fund for \$150 million was established, accounting for the large increase over the 2005 total.

Market Value of University Endowment





## NEW and RENOVATED FACILITIES

<u>In Construction/Renovation</u>	<u>Scope</u>	<u>Funding Source</u>	<u>Anticipated On-line Date</u>
Construct Patient Care Facility	\$700,000,000	Agency	Winter 2010
Biological Pharmaceutical Complex Building	135,292,000	State/Agency	Winter 2009
Expand and Upgrade Livestock Disease Diagnostic Lab	28,500,000	State	Winter 2010
Digital Village Building # 2	20,000,000	Agency/Private	Winter 2010
Construct Wildcat Coal Lodge	7,000,000	Private	Fall 2011
Expand Coldstream Research Campus - Redundant Feeds	6,500,000	State/Agency	Spring 2010
Renovate/Expand the Center for Applied Energy Research	3,712,581	Federal/State/Agency	Fall 2010
Convert Hunt Morgan Space to Class Lab	3,200,000	Agency	Fall 2009
Renovate Central Computing Facility	2,813,000	Agency	Spring 2010
Renovate Schmidt Vocal Arts Center	2,371,000	Private/Agency	Fall 2009
Construct Children's Garden at the Arboretum	2,200,000	Private	Spring 2010
Renovate Research Labs in Chemistry-Physics Building	2,080,000	Agency	Summer 2010
Replace Emergency Generators & Fire Pump - UK Good Samaritan	2,025,550	Agency	Summer 2010
Repair, Upgrade, Improve Building Systems - Hospital (Elevators Upgrade for Kentucky Clinic)	1,000,000	Agency	Winter 2011

## NEW and RENOVATED FACILITIES

### In Planning and Design

Gatton Building Complex	\$142,450,000	State/Private	Fall 2014
Law School Building	123,135,000	State/Private	Summer 2015
Expand Ophthalmology Clinic - Kentucky Clinic	2,930,000	Agency	Fall 2010
Renovate Nursing Building	1,883,970	Federal	Fall 2010
Renovate Nutter Training Center Meeting Rooms	750,000	Private	Fall 2010

## LAND and SPACE\* 2008-2009

	Main Campus	Off Campus**	Total
Acreage***	726	24,203	24,929
Assigned Square Footage in Buildings****			
Classroom	257,699	18,501	276,200
Laboratory	1,185,083	158,188	1,343,271
Office	1,738,334	988,513	2,726,847
Study	402,139	5,969	408,108
Special	629,299	593,338	1,222,637
General	706,946	110,290	817,236
Support	2,785,271	470,322	3,255,593
Health Care	476,557	188,506	665,063
Residential	1,257,806	186,251	1,444,057
Unclassified	78,715	78,052	156,767
<b>Total</b>	<b>9,517,849</b>	<b>2,797,930</b>	<b>12,315,779</b>

\* Excludes space provided at no cost; includes leased space

\*\* Includes research farms, Robinson Forest, substations, 4-H Camps, and Adena Park

\*\*\* Source: FY08 Land Inventories

\*\*\*\* Source: Fall 2008 Physical Facilities

## GENERAL EQUIPMENT INVENTORIES

(In Millions)

	<u>Inventory 6/30/07</u>	<u>Inventory 6/30/08</u>	<u>Inventory 6/30/09</u>
<b>General</b>			
Instruction	\$ 26.7	\$ 29.4	\$ 33.6
Research	131.0	140.4	149.1
Public Service	18.3	18.9	20.6
Academic Support	18.9	21.4	21.6
Student Services	2.4	2.5	2.6
Institutional Support	21.6	22.4	25.9
Op & Mgt of Plant	3.0	3.4	3.1
Multifunction	6.9	10.6	6.4
<b>Sub total</b>	<b>228.9</b>	<b>248.9</b>	<b>262.9</b>
<b>Auxiliaries</b>	<b>17.1</b>	<b>19.1</b>	<b>20.1</b>
<b>Hospital</b>	<b>131.7</b>	<b>142.6</b>	<b>173.3</b>
<b>Other</b>	<b>51.7</b>	<b>38.8</b>	<b>29.5</b>
<b>Total</b>	<b>429.3</b>	<b>451.5</b>	<b>485.9</b>

Note: Some numbers do not total properly due to rounding.

## LIBRARY COLLECTIONS

	<b>2006-2007</b>	<b>2007-2008</b>	<b>2008-2009</b>
Volumes Held	3,537,710	3,719,548	3,784,382
Current Periodical Titles	44,610*	73,251	78,194
Microforms	6,433,748	6,471,766	6,506,097
Audio-visual Materials	92,600	93,878	96,717

The Libraries' collections also include access to approximately 400 licensed networked electronic databases, over 40,000 electronic journals and a large collection of electronic books accessible in the University's 12 libraries and also available to faculty and students off campus via a proxy server. In addition, the collections include: 262,549 maps; over 200 current state, national and international newspapers; over 6,500 Oral History program interviews on the history and culture of Kentucky; the University Archives and Records Program; the Wendell H. Ford Public Policy Research Center; the Audio-Visual Archives; the Bert T. Combs Appalachian Collection; the Public Policy Archives; the Rare Book Collection which includes the W. Hugh Peal Collection of 19th century English and related literature; and the Preservation Reformatting Center. The Center for Digital Programs creates digital content for the Kentuckiana Digital Library including electronic texts, digitized photographs, images and archival finding aids. The Library is a regional depository for U.S. government publications, and also a depository for Canadian government publications and European Union publications. British Parliamentary Papers, Kentucky government publications, and technical reports from federal agencies are all selectively collected.



\*Note: ARL changed the way that periodicals are counted.

## TOP 20 BUSINESS PLAN BENCHMARK INSTITUTIONS

Georgia Institute of Technology

Ohio State University

Pennsylvania State University

Rutgers University - New Brunswick

Texas A & M University

The University of Texas at Austin

University of California - Berkeley

University of California - Davis

University of California - Los Angeles

University of California - San Diego

University of Florida

University of Illinois at Urbana - Champaign

University of Maryland - College Park

University of Michigan - Ann Arbor

University of Minnesota - Twin Cities

University of North Carolina at Chapel Hill

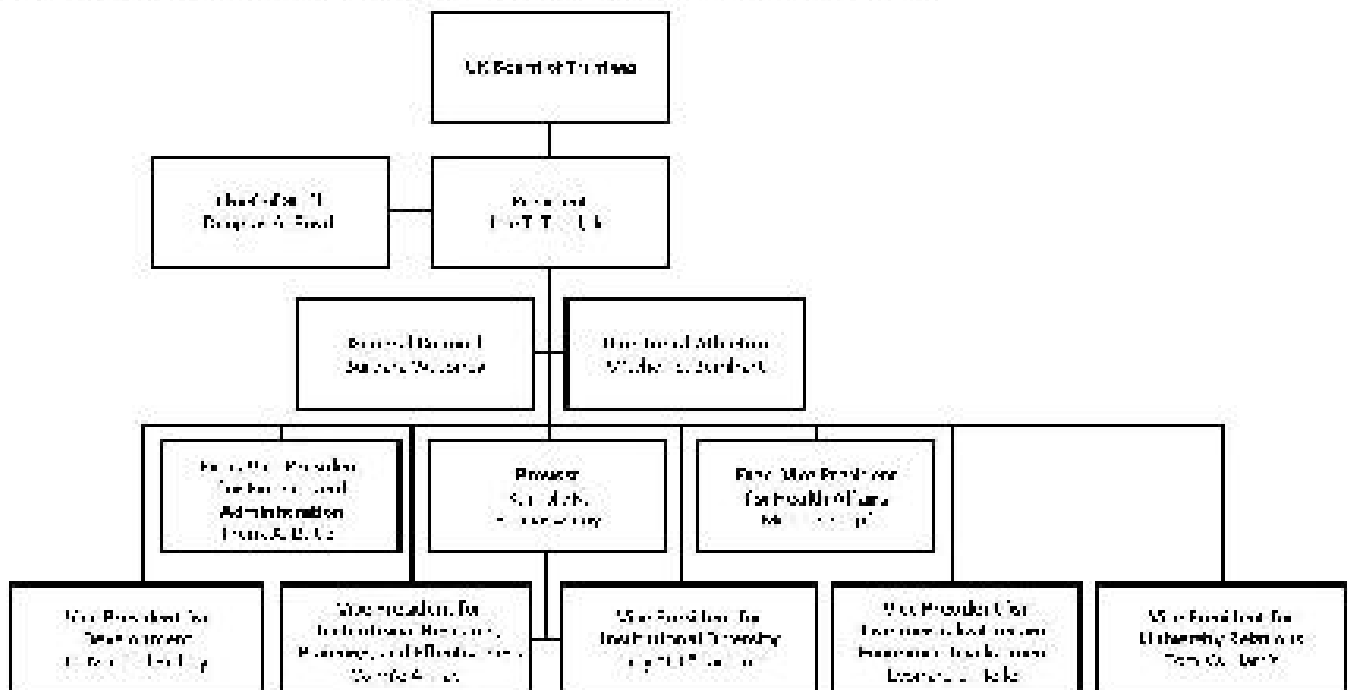
University of Pittsburgh - Pittsburgh Campus

University of Virginia

University of Washington - Seattle Campus

University of Wisconsin - Madison

# ADMINISTRATIVE ORGANIZATION



## BOARD of TRUSTEES

<b>Mira S. Ball</b>	Lexington	(2010)	<b>Billy Joe Miles</b>	Owensboro	(2013)
<b>Stephen P. Branscum</b>	Russell Springs	(2010)	<b>Sandy Patterson</b>	Alumni Member	(2012)
<b>Edward Britt Brockman</b>	Louisville	(2014)	<b>Robynn M. Pease</b>	Staff Member	(2010)
<b>Penelope A. Brown</b>	Corbin	(2011)	<b>Erwin Roberts</b>	Louisville	(2012)
<b>Jo Hern Curris</b>	Alumni Member	(2014)	<b>Charles R. Sachatello</b>	Lexington	(2013)
<b>Dermontti Dawson</b>	Nicholasville	(2011)	<b>C. Frank Shoop</b>	Lexington	(2014)
<b>Carol Martin "Bill" Gatten</b>	Tennessee	(2015)	<b>Ryan Smith</b>	Student Member	(2010)
<b>Ann Brand Haney</b>	Alumni Member	(2010)	<b>James W. Stuckert</b>	Prospect	(2015)
<b>Pamela T. May</b>	Pikeville	(2013)	<b>Ernest Yanarella</b>	Faculty Member	(2010)
<b>Everett McCorvey</b>	Faculty Member	(2011)	<b>Barbara Young</b>	Lexington	(2015)



# ADMINISTRATIVE HISTORY

- 1865** Agricultural and Mechanical College (A&M) established as part of Kentucky University
- 1869** James K. Polkton became President of A&M
- 1878** A&M separated from Kentucky University
- 1882** A&M moved to current location in Lexington
- 1885** Ag. Experiment Station opened
- 1889** College of Agriculture established
- 1908** College of Arts and Sciences and College of Law established; A&M name changed to "State University, Lexington, Kentucky"
- 1909** University Library established
- 1911** Henry S. Barker became President of State University
- 1916** State University renamed University of Kentucky
- 1917** Frank L. McVey became President of UK; Graduate School established
- 1918** College of Engineering established
- 1923** College of Education established
- 1925** College of Business and Economics established
- 1941** Herman L. Danavon became President
- 1947** College of Pharmacy moved to UK
- 1956** Frank G. Dickey became President
- 1957** Ashland Extension Center established
- 1960** Medical Center established; College of Medicine admitted first class; College of Nursing admitted first class; Henderson Extension Center and Southeast Extension Center established
- 1962** College of Dentistry admitted first class; University Hospital opened
- 1963** John W. Oswald became President
- 1964** Community College System established under UK; College of Architecture established
- 1965** Lexington Technical Institute (LTI) established
- 1966** College of Allied Health Professions established
- 1967** College of Home Economics established
- 1968** Albert D. Kirwan became President
- 1969** College of Social Work established; Otis A. Singletary became President
- 1970** College of Library and Information Science established
- 1976** College of Communications and College of Fine Arts established
- 1982** University reorganized with a Central Administration and three sectors headed by Chancellors (Lexington Campus, Medical Center, and Community College System)
- 1984** LTI became Lexington Community College
- 1987** David P. Roselle became President
- 1990** Charles T. Withington, Jr. became President
- 1993** College of Communications and Information Studies established
- 1998** William T. Young Library opened; All Community Colleges (except LOC) transferred to the KCTCS
- 2001** Lee T. Todd, Jr. became President; University reorganized with a Provost model
- 2002** College of Design established
- 2004** LOC transferred to the KCTCS; College of Public Health established

# VALUES

The values of the University guide its decisions and the behavior of its community. Its core values are:

- *Integrity*
- *Excellence*
- *Mutual Respect and Human Dignity*
- *Diversity and Inclusion*
- *Academic Freedom*
- *Shared Governance*
- *Work-life Sensitivity*
- *Civic Engagement*
- *Social Responsibility*

-- Adopted by the Board of Trustees, June 9, 2009

see blue

**UK**  
UNIVERSITY OF  
KENTUCKY

*An Equal Opportunity University*

Published by the  
UK Office of Institutional Research  
For more detailed information:  
[www.uky.edu/IRPE/fast\\_facts.html](http://www.uky.edu/IRPE/fast_facts.html)

