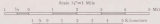
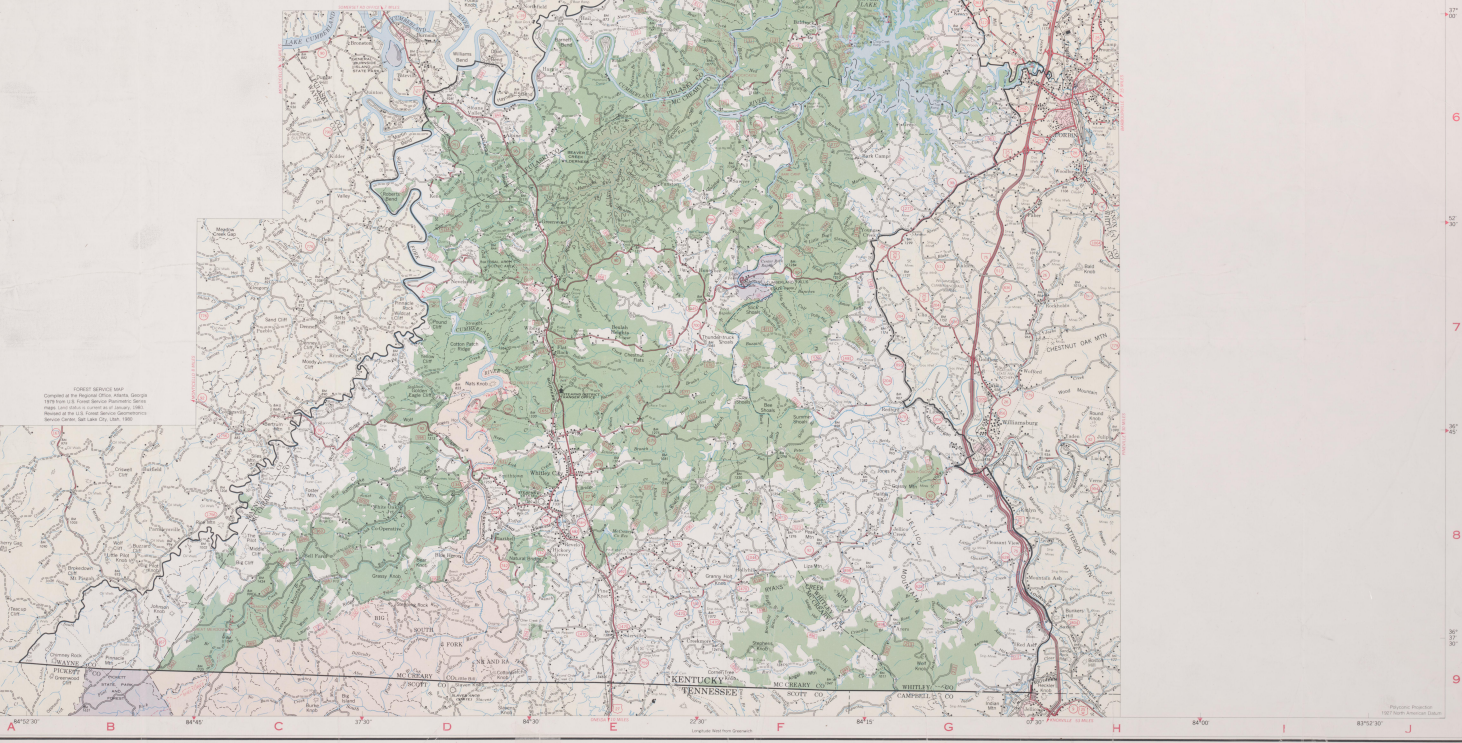


NAME	ELEVATION	FACILITIES					ACTIVITIES				
		VIEWPOINTS	TRAILHEADS	TRAILHEAD FACILITIES	TOILETS	RESTROOMS	BOATING	FISHING	HUNTING	SWIMMING	BOAT RAMP FACILITIES
Blum Ford	0.7	•									
Blair Rock	0.1										
Black Camp	1.6	•									
Black Rock	1.8	•									
Steel Meadow	1.8	•									
Blair Hollow	1.8	•									
Clutter Patch	2.8	•									
Craig Creek	2.8	•									
Falcons Ramp	0.1	•									
Hemlock Grove	1.8	•									
Tringula Ramp	0.1	•									
Sturdy Bay Ramp	2.8	•									
Laird Bridge	1.8	•									
Little Lake	1.8	•									
Marsh of South	1.8	•									
Natural Arch Scenic Area	0.7										
Rockcastle	1.8	•									
Star	1.8	•									
Sims Branch	1.8	•									
Star Creek	1.8	•									
Straight Creek	0.7	•									
Turkey Foot	1.8	•									
Tenn Branch	1.8	•									
White Oak	0.5	•									
Yalob Falls	0.7	•									

U.S. DEPARTMENT OF AGRICULTURE  
FOREST SERVICE  
SOUTH FORESTRY DISTRICT  
**DANIEL BOONE NATIONAL FOREST**  
(SOUTH HALF)  
KENTUCKY  
1981



- LEGEND**
- National Forest Boundary
  - Parish/County Boundary
  - Natural Area Boundary
  - National Forest Land
  - District Ranger Office
  - Recreation Site, Forest Service
  - Historical Cemetery
  - Forest Service Facility
  - Lookout Tower
  - Historical Control Station
  - Wild Quarry or Gravel Pit
  - State Mine
  - Primary Highway
  - Secondary Highway
  - Improved Road
  - Private Road
  - Trail
  - Interstate Highway
  - U.S. Highway
  - State Highway
  - Forest Road
  - Forest Trail
  - Cemetery
  - Church, School, House



**FOREST SERVICE MAP**  
Compiled at the Regional Office, Asheville, North Carolina  
1979 from U.S. Forest Service Recreational Service  
Map and other sources and other data of various sources.  
Map scale 1:50,000. Contour interval 100 feet.  
Natural Color. Soil Lines Only. 1981.

KENTUCKY  
MURFREESBORO  
MURFREESBORO  
MURFREESBORO