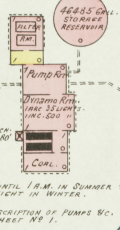
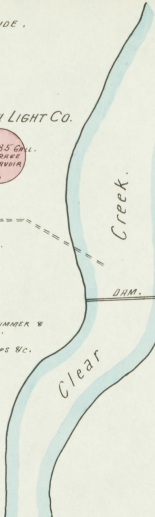


NO EXPOSURE ANY SIDE.

SHELBYVILLE WATER & LIGHT CO.



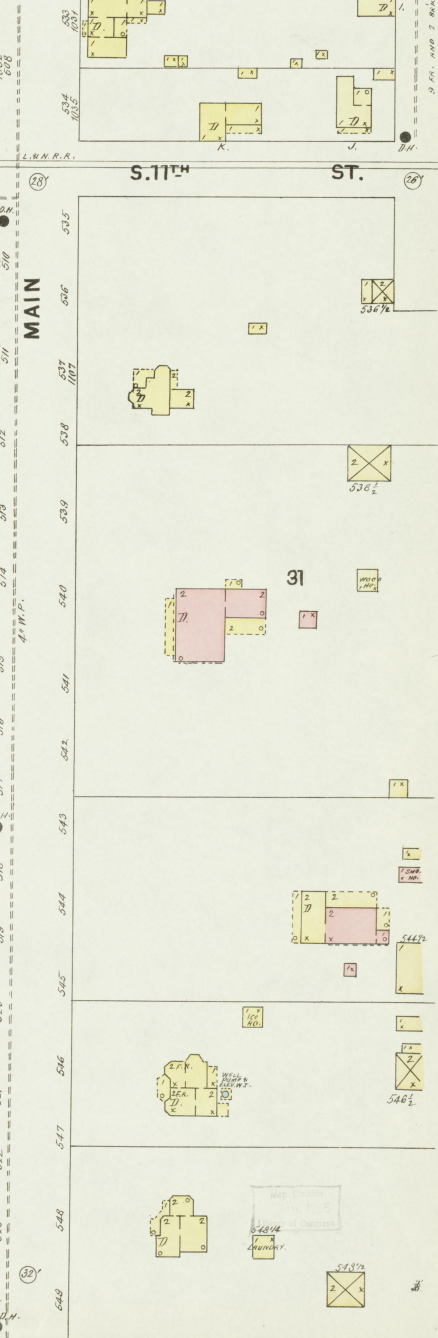
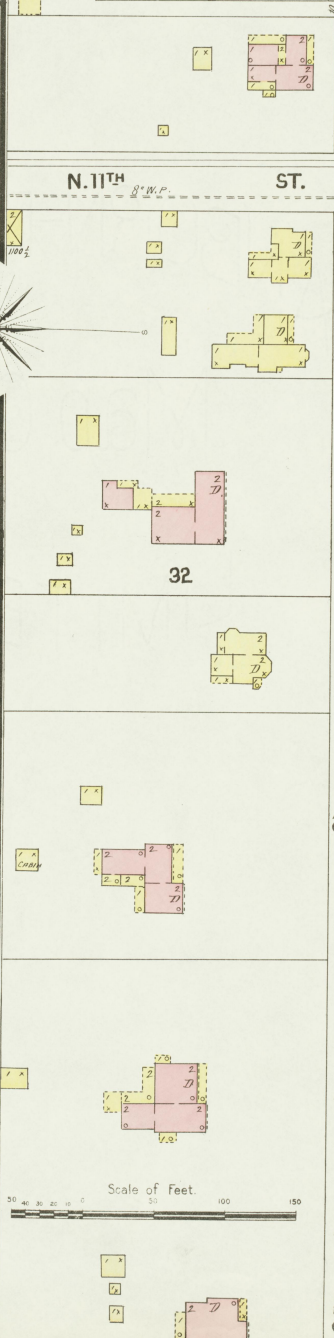
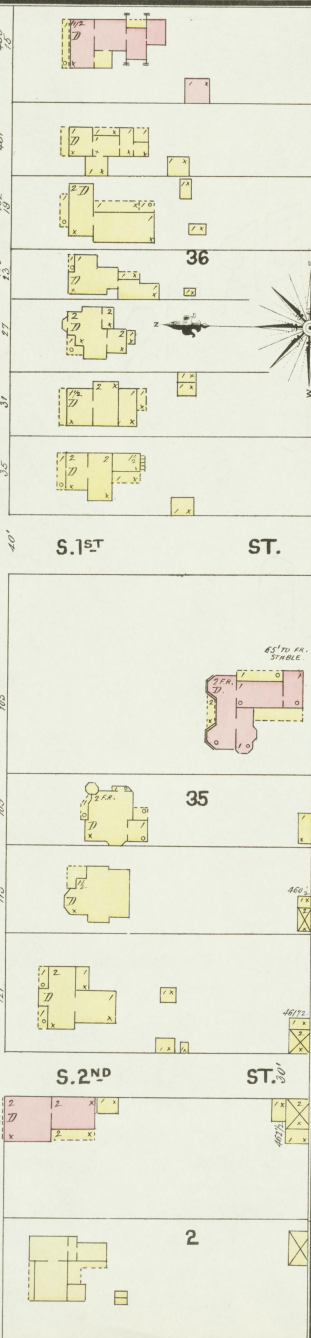
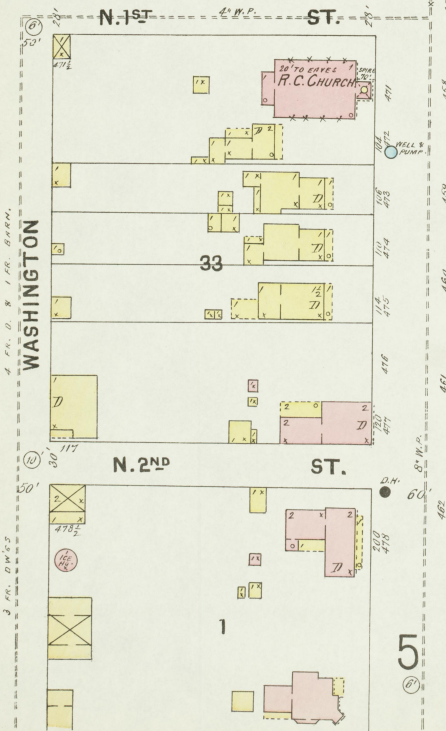
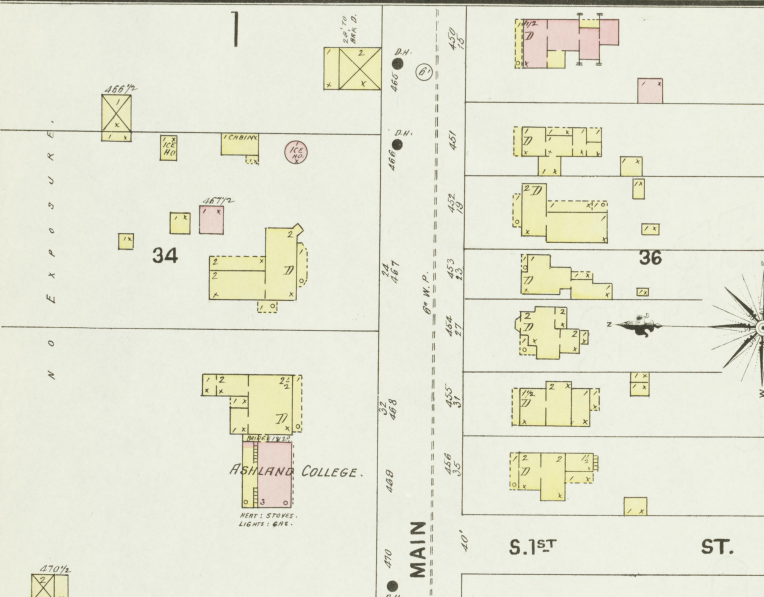
1/2 Mile N.W. of Nicholasville, Ky.



Aug. 1897
SHELBYVILLE
KY.

2

CLAY



WASHINGTON

N O E X P O S U R E

N. 1ST ST.

N. 2ND ST.

MAIN

MAIN

N. 11TH ST.

S. 11TH ST.

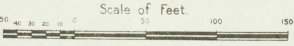
S. 1ST ST.

ST.

S. 2ND ST.

ST.

MAIN

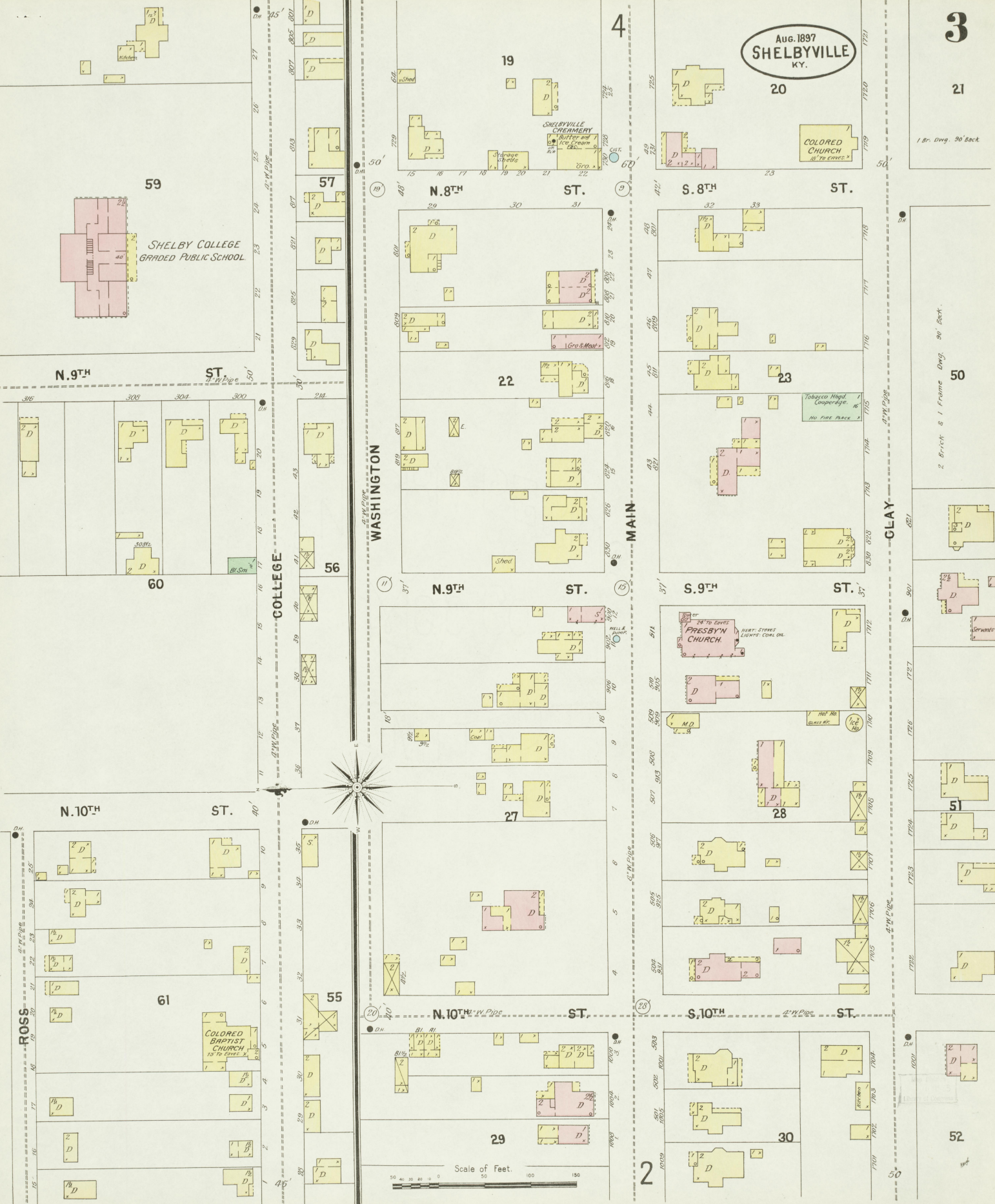


1 Br. Dwg. 90' Eack

Aug. 1897
SHELBYVILLE
KY.

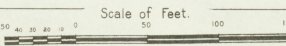
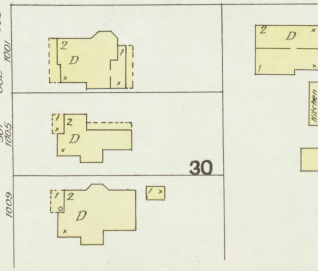
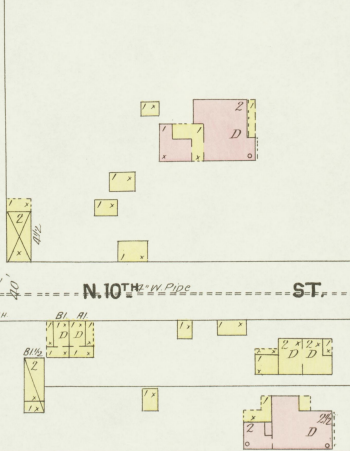
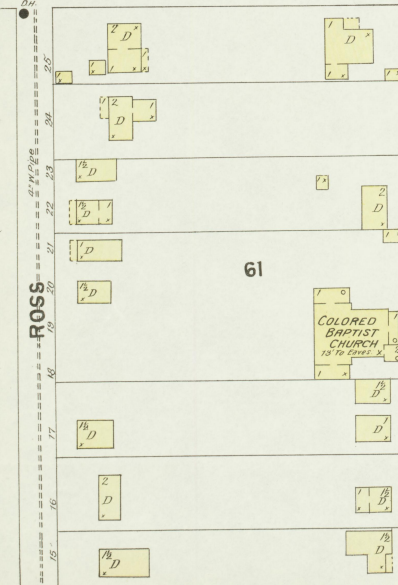
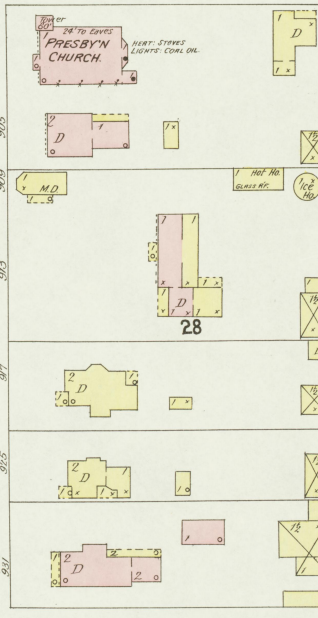
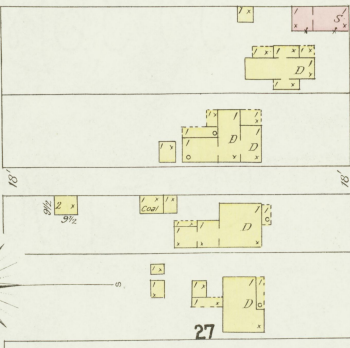
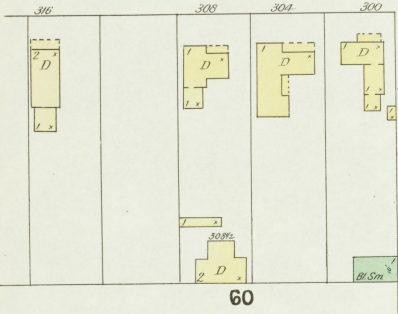
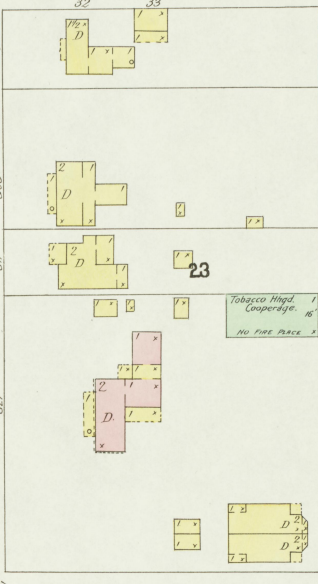
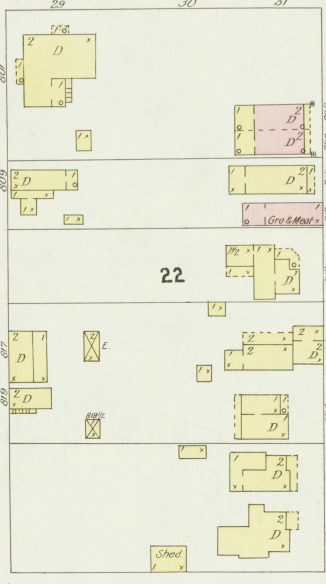
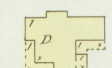
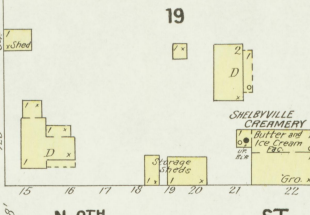
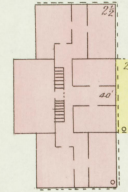
COLORED CHURCH
10' E. Eaves

2 Brick & 1 Frame Dwg. 90' Eack.



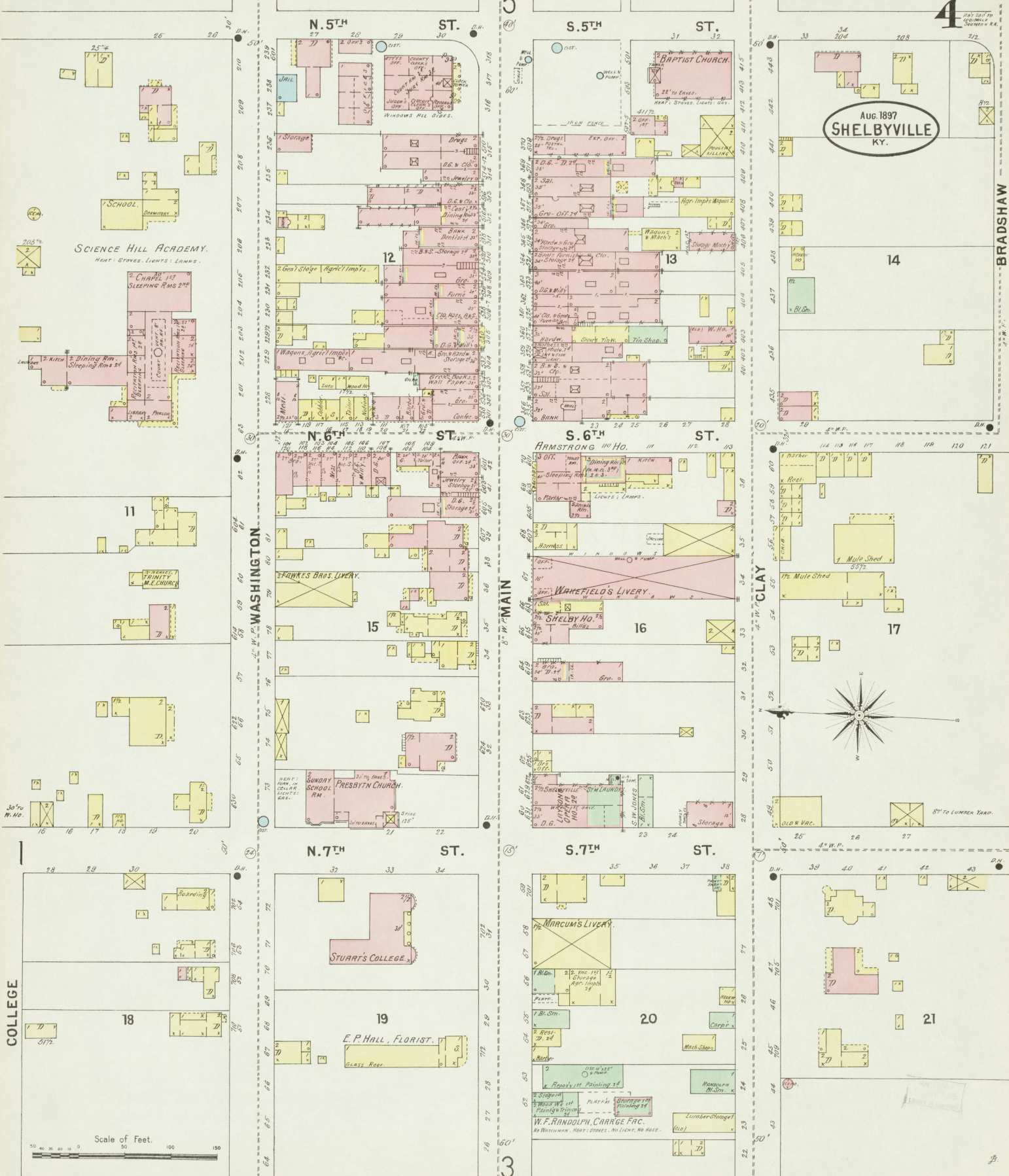
59

SHELBY COLLEGE
GRADED PUBLIC SCHOOL



Aug. 1897
SHELBYVILLE
KY.

BRADSHAW



SCIENCE HILL ACADEMY.
HEAT, STOVES, LIGHTS, LUMBS.

11
PRIMITIVE
M.E. CHURCH.

COLLEGE

Scale of Feet.
0 50 100 150

N. 5TH ST.

S. 5TH ST.

N. 6TH ST.

S. 6TH ST.

N. 7TH ST.

S. 7TH ST.

WASHINGTON

8TH W. MAIN

CLAY

STUART'S COLLEGE

E. P. HALL, FLORIST.

BAPTIST CHURCH.

ARMSTRONG HO.

WAKEFIELD'S LIVERY.

MARCUM'S LIVERY.

Mule Shed

Mule Shed

Mule Shed

W. F. RANDOLPH, CHARGE FAC.

AUG. 1897
SHELBYVILLE
KY.

5

42

2

37

N. 3RD ST.

S. 3RD ST.

200 206 208 214 218

38

N. 4TH ST.

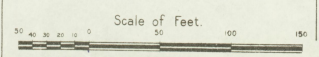
S. 4TH ST.

220 226 232 238 244

N. 5TH ST.

S. 5TH ST.

250 256 262 268 274



WASHINGTON

MAIN

CLAY

BRADSHAW

LONG and WEBBER
LIVERY

J. T. PLACE
Carriage & Wagon Shop

CENTENARY
M. E. CHURCH
20 1/2 ENDS
HEAT, FURNACE
CARRIAGE SHOP
(BEING BUILT JULY 1895)

Park

WELLS & PUMP

CHRISTIAN
CHURCH
20 1/2 ENDS
HEAT, FURNACE
SUNDAY
SCHOOL
KITEN

WELLS & PUMP

BETHEL
M. E. CHURCH
15 1/2 ENDS

Only
Rock Breaking
Terra

41

Remains of
SHELBYVILLE
M. E. CHURCH

40

R. G. SWIFTMAN
LIVERY

L. H. GRUBBS & SON
CARPENTERS & BUILDERS

LEWIS
CHURCH

LIGGETT & MEYER'S
Tobacco & Wire No.
Copy 180000 lbs.

4