

16093

KEY

31	FIRE WALL 6 IN. OR ROOF
12	BRICK
10	WOOD
11	FRAME PARTITION
13	OPENING & NON BUR.
14	WINDOWS - SHUTTERS
15	STABLE
16	WINDOW IN 1 ST STORY
17	11' x 12"
18	2 1/2" x 4"
19	BLUES COLORED YELLOW ASH FRAME
20	BRICK
21	STONE
22	IRON
23	BROWN - BRICK
24	BROWN - SPECIALS
25	ARMED ASH CLAY BRICK
26	INDICATE RELATIVE HEIGHTS
27	ADDRESS STREET NOT AN ACTUAL
28	CONSECUTIVE IN AN BLOCK - WOOD CORNER
29	SOLID - METAL

ASHLAND

Boyd Co. KENTUCKY

SANBORN PERRIS NEW YORK MAP CO.

115 BROADWAY

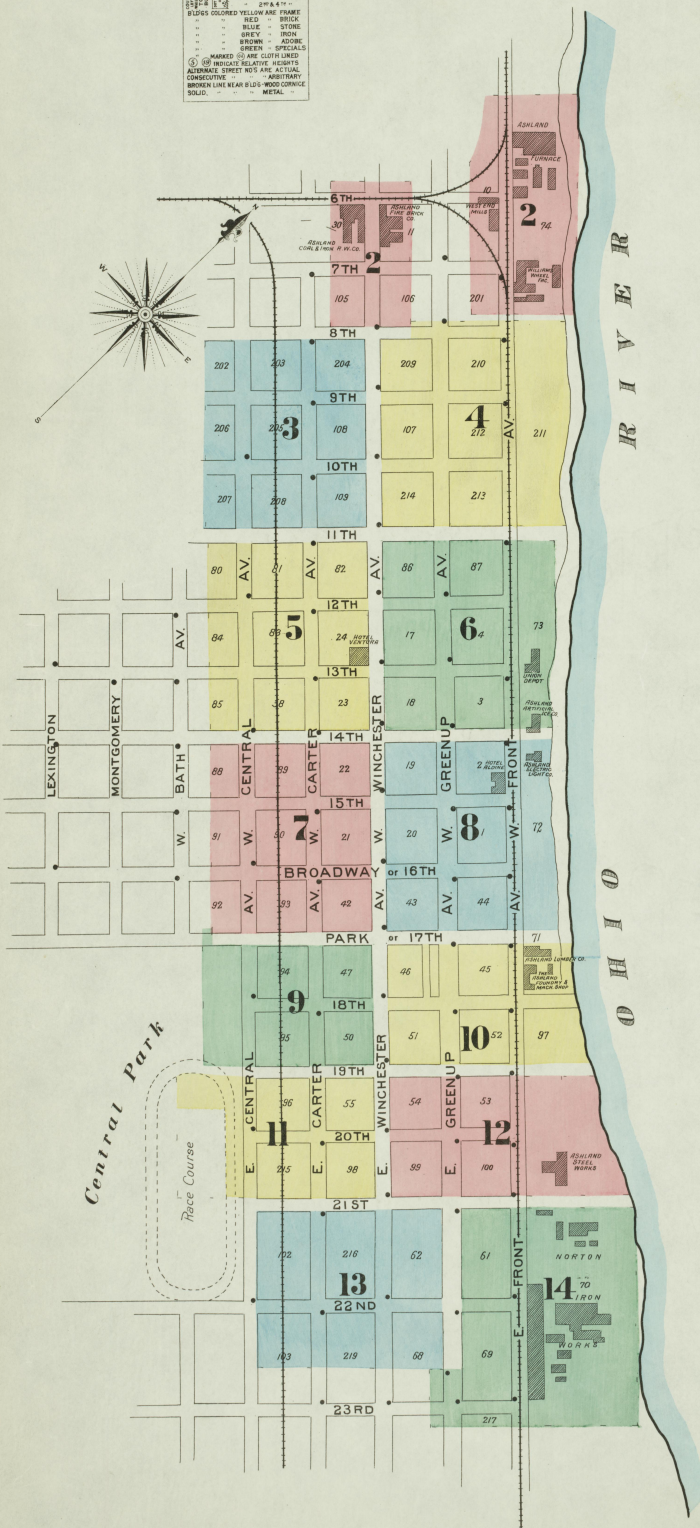
Scale 50 Ft. to an Inch

Feb'y. 1895

Copyright 1895, by the Sanborn-Perris Map Co. Limited.

15 Sheets (7775)

TO COPY DES. TO MAP DIV. JUN 13 1907



Population 6400, Prev. Winds, West

Water Facilities - Reservoir and direct pressure system, combined, owned by the Ashland Water Supply Co. Reservoir of 1 1/2 Million Gals. capy. Elevation 190 above town. 2 Deane Duplex Vertical Pumps, capy of both 3 Million Gals. per 24 hours. 3 Miles of Water Pipes, 4" to 12" Diam. 63 Double Hydrants. Average pressure 65 lbs. per sq. inch.

Fire Department - Organized volunteer 28 Men 2 Hose Carts & 1 Hose Wagon, 1700' 2 1/2" Hose. 1 Hook & Ladder Truck. 3 Fire districts. 10 Cisterns, average capy 1000 bbls. Streets traveled. Grades about level. No recorded block numbers on the old town.

INDEX.

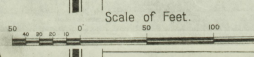
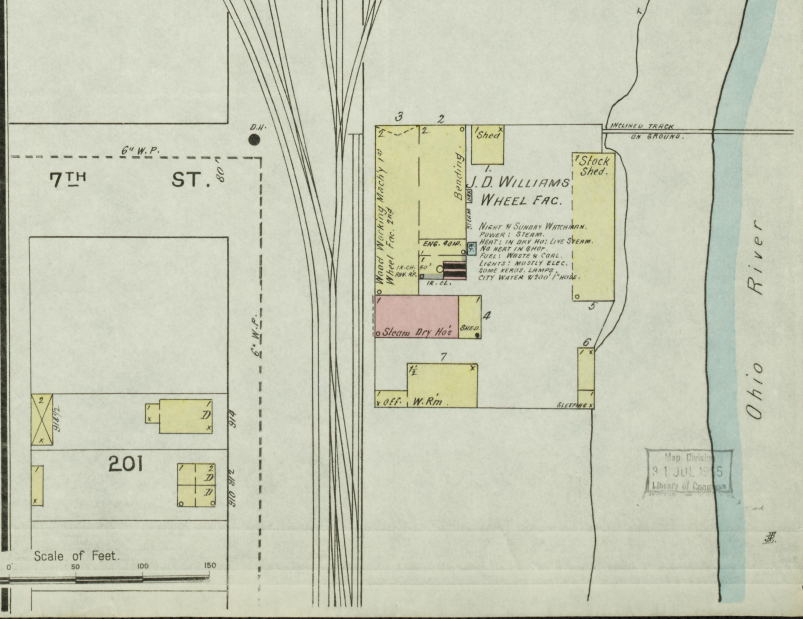
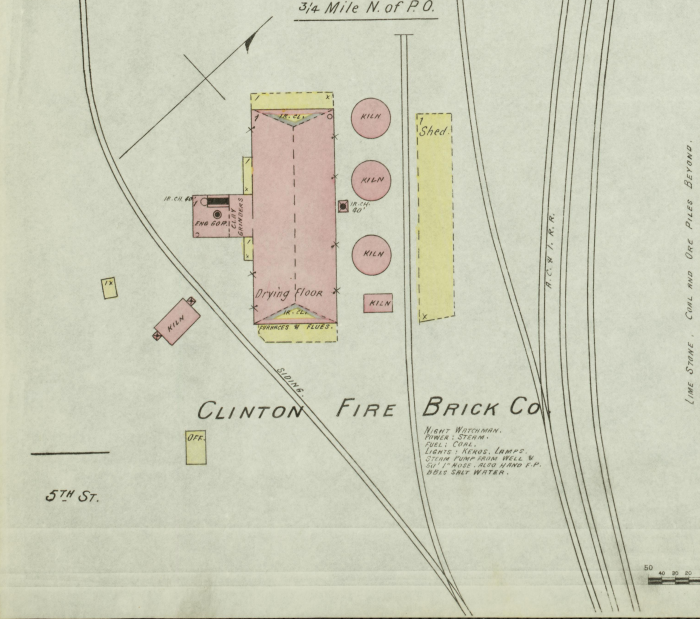
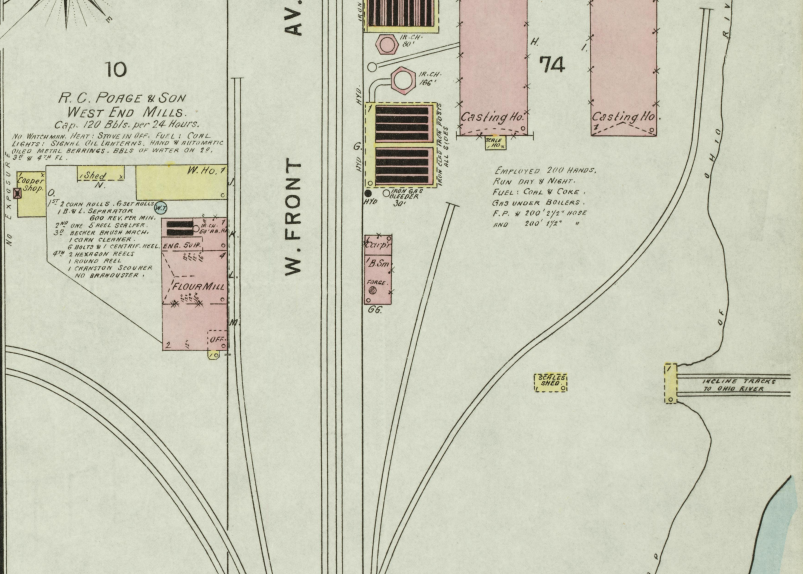
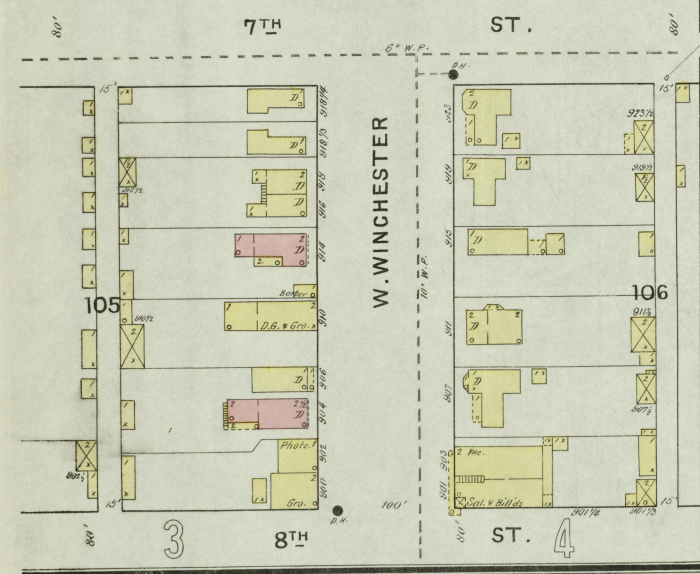
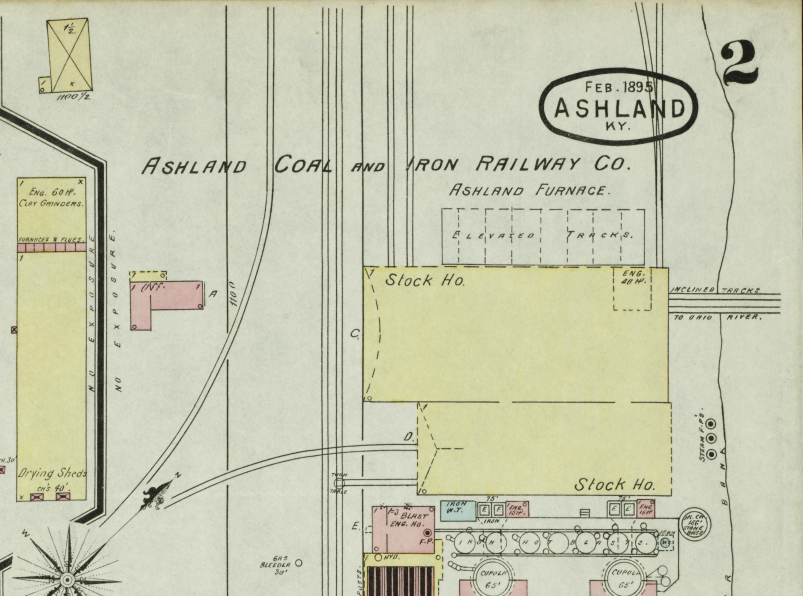
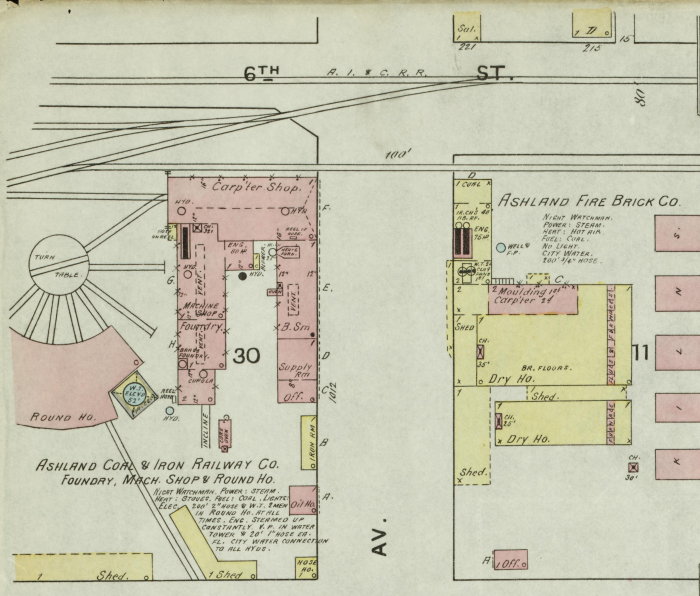
STREETS.		INDEX
Ninth,	100-223 4	Ashland Steel Co.,
Broadway, see Sixteenth.	300-509 3	Water Supply Co.,
Carter Ave., E.,		Baptist Church,
100-123 7		Catholic Church,
200-323 11		Christian "
300-509 12		City Hall,
27th to 29th,	301-509 15	Clifton Fire Brick Co.,
300-523 10		Crowell & Harris, Saw Mill,
300-523 10		East Ashland School,
300-523 10		Electr. R. R. Car House,
300-523 10		Bishopical Church,
300-523 10		First Presbyterian Church,
300-523 10		German Lutheran Church,
300-523 10		Herrmann, H., Dimension Factory,
300-523 10		Hotel Ashland,
300-523 10		Ventura,
300-523 10		Laumont Mills,
300-523 10		Merrill & McCann, Feed Mills,
300-523 10		Meth. Episc. Church, 13th & Winch. Ave.,
300-523 10		W. Carter Ave.,
300-523 10		College,
300-523 10		N. N. & M. V. R. R. Depot,
300-523 10		Norton Iron Works,
300-523 10		Opera House,
300-523 10		Poage, R. C. & Son, Flour Mills,
300-523 10		Public School (Site),
300-523 10		Republican Printing,
300-523 10		Standard Planing Mill & Building Co.,
300-523 10		Thomas, M. W., Saw & Planing Mill,
300-523 10		Union Depot,
300-523 10		West End Mills,
300-523 10		Williams, J. D., Wheel Factory,

* Indicates only one side of Street shown.

Map Division
31 JUL 1905
Library of Congress

FEB. 1895
ASHLAND
KY.

ASHLAND COAL AND IRON RAILWAY CO.
ASHLAND FURNACE.



Map Drawn
21 JUL 1895
Library of Congress

FEB. 1895
ASHLAND
KY.

3

8TH ST.

9TH ST.

10TH ST.

11TH ST.

W. CENTRAL AV.

W. CARTER AV.

W. WINCHESTER AV.

VACANT
202

VACANT
206

VACANT
207

203

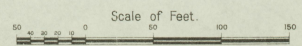
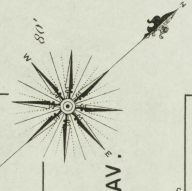
205

208

204

108

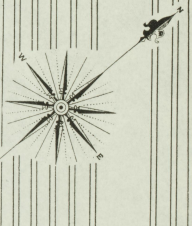
109



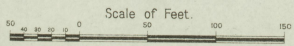
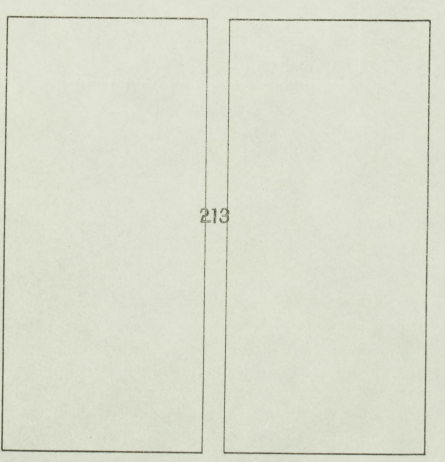
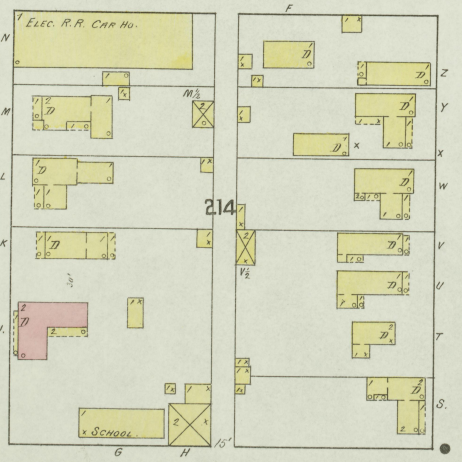
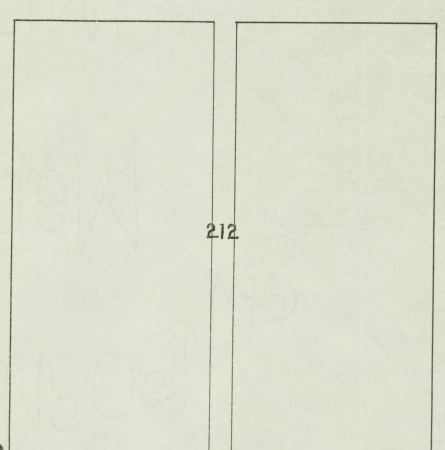
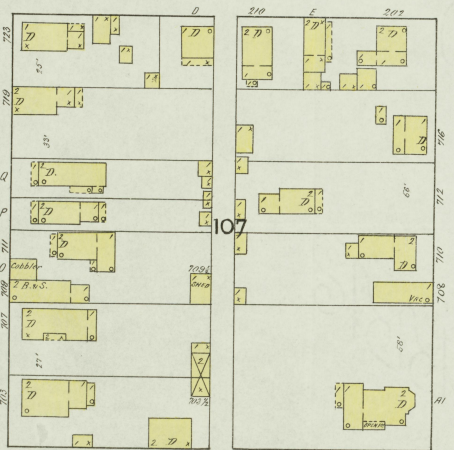
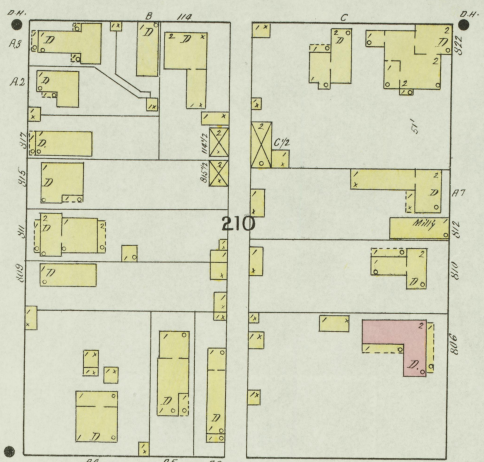
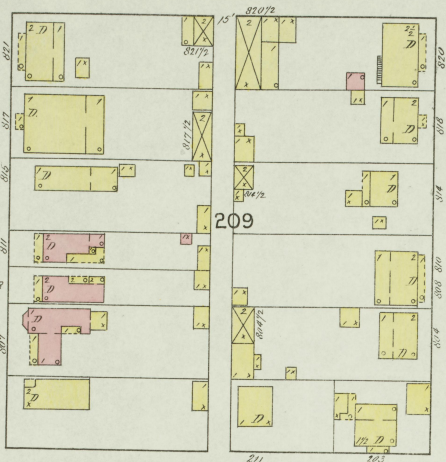
Map Division
31 JUL 1915
VACANT

FEB. 1895
ASHLAND
N.Y.

PLAT
A.C.W.A.R.R.C.O.
CORAL HILL
RECORDED
INDEXED
FILED
CITY CLERK



Map Division
91 JUL 1895
Library of Congress



W. WINCHESTER AV.

W. GREENUP AV.

W. FRONT AV.

8TH ST.

ST.

9TH ST.

ST.

10TH ST.

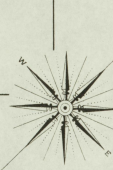
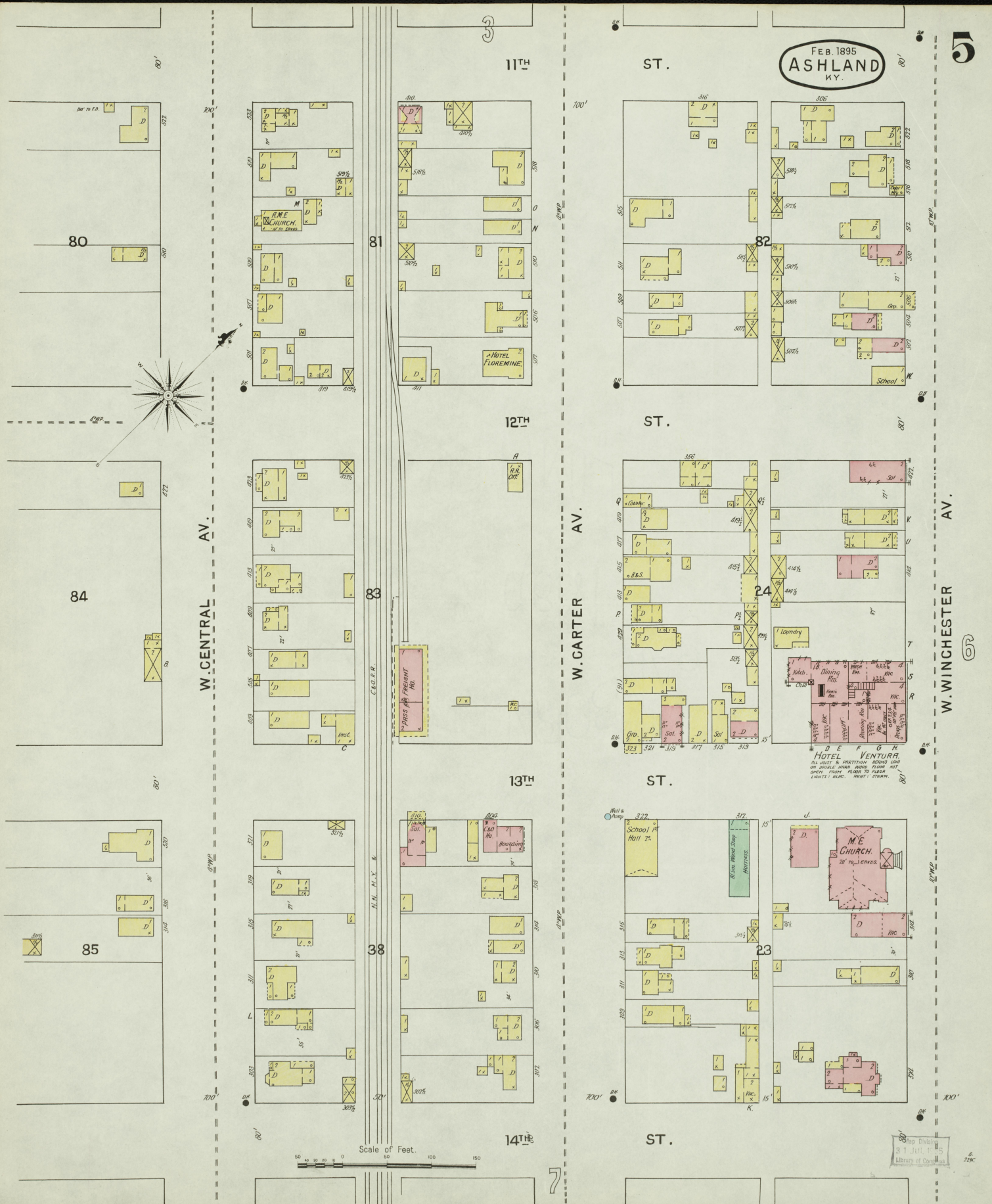
ST.

11TH ST.

ST.

FEB. 1895
ASHLAND
KY.

5

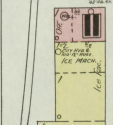
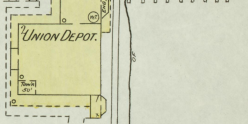
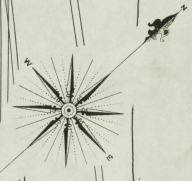


Scale of Feet.
0 50 100 150

HOTEL VENTURA.
ICE CASES & FRIGIDIFERS. REFRIG. AND
HOT DOUBLE WARE. FLOOR NOT
LAVORY. PLUMB. PIPES TO PLUMB.
LIGHTS & ELEC. HEAT & STEAM.

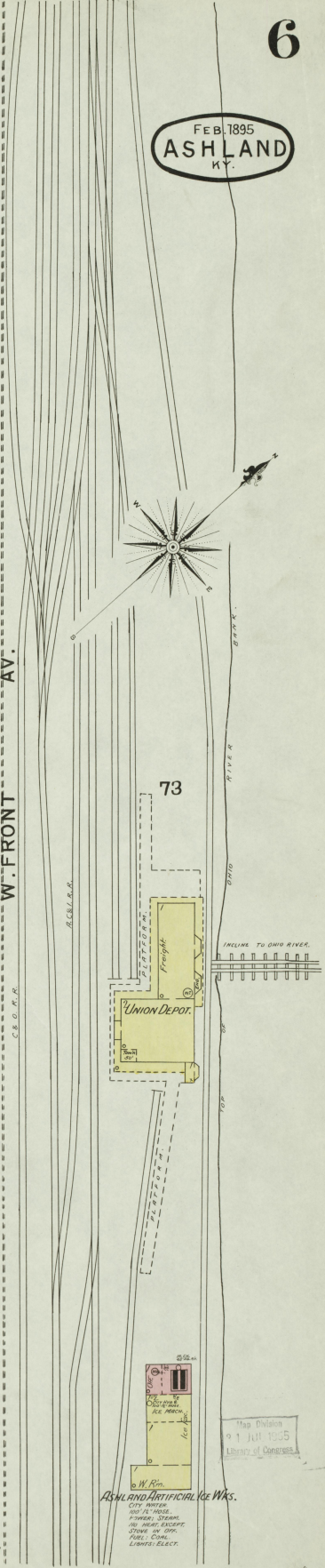
Map drawn
31 (1) 1895
Library of Congress

FEB. 1895
ASHLAND
KY.

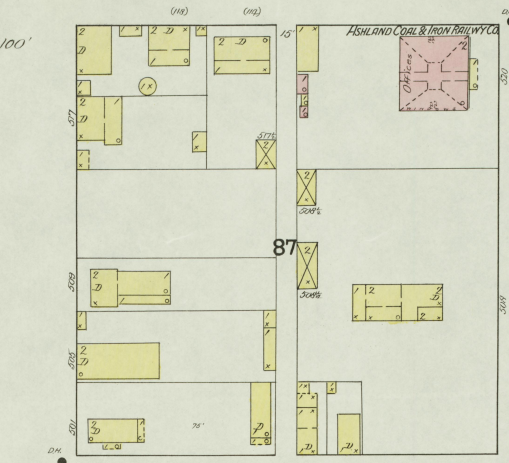


ASHLAND ARTIFICIAL ICE WORKS.

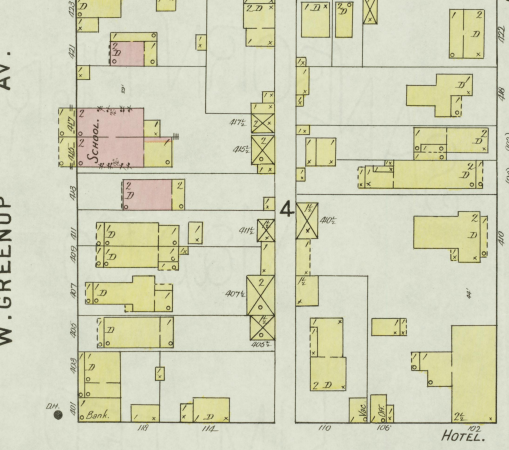
Map Division
9 1 10 12:5
Library of Congress



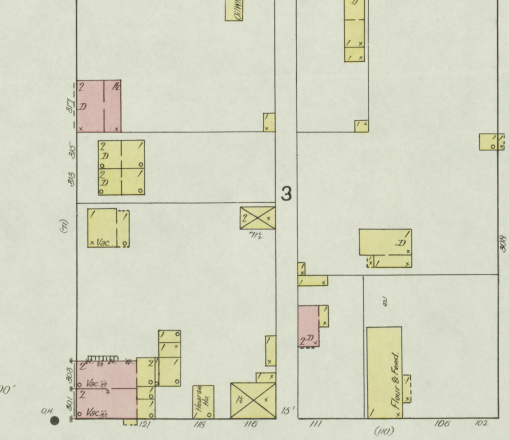
11TH ST. 80'



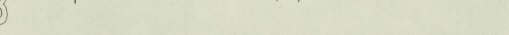
12TH ST. 80'



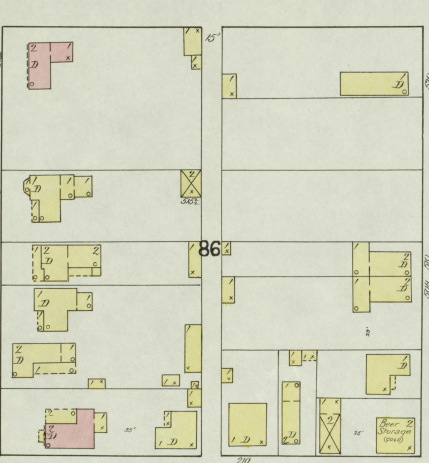
13TH ST. 80'



14TH ST. 80'



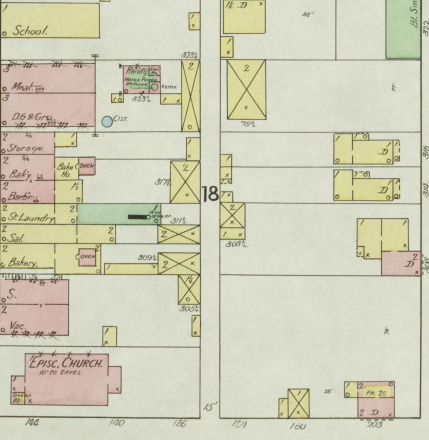
80'



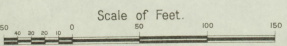
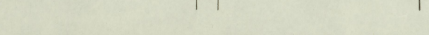
80'



80'



80'



W. WINCHESTER AV. 100'

W. GREENUP AV. 100'

5

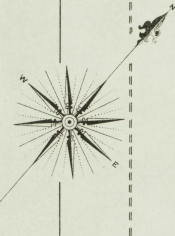
00

H.K.S.

FEB. 1895
ASHLAND
KY.

7

88



14TH ST.

ST.

89

SCHOOL

22

15TH ST.

ST.

90

M. E. CHURCH

21

W. CARTER AV.

W. WINCHESTER AV.

91

W. CENTRAL AV.

BROADWAY

OR 16TH ST.

92

E. CENTRAL AV.

PARK

OR 17TH ST.

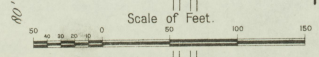
E. CARTER AV.

E. WINCHESTER AV.

ALEXANDER HO.

CHRISTIAN CHURCH

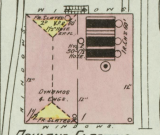
1ST PRESBYN CHURCH



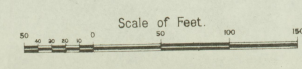
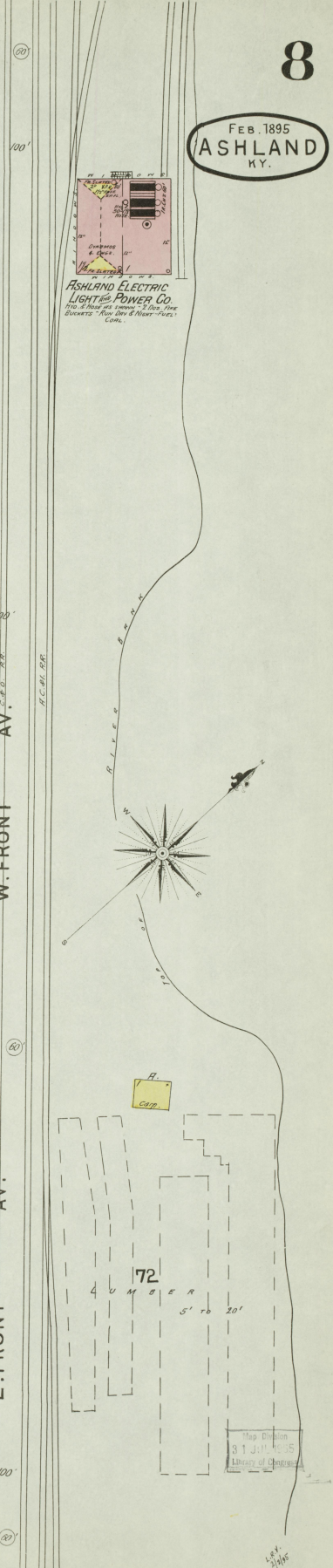
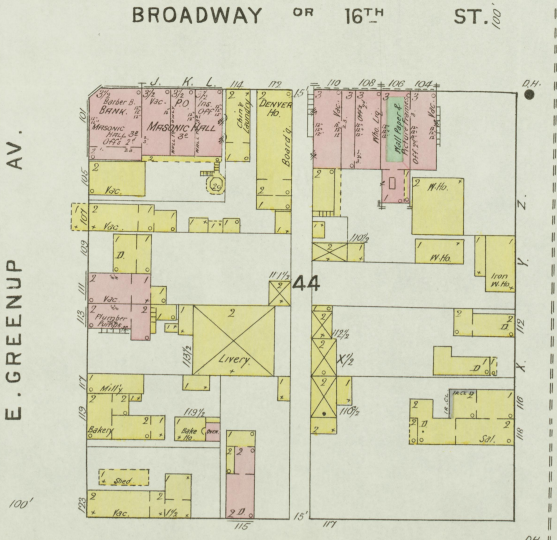
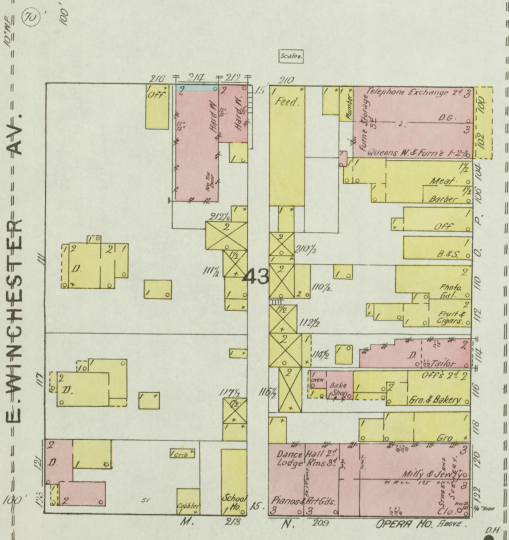
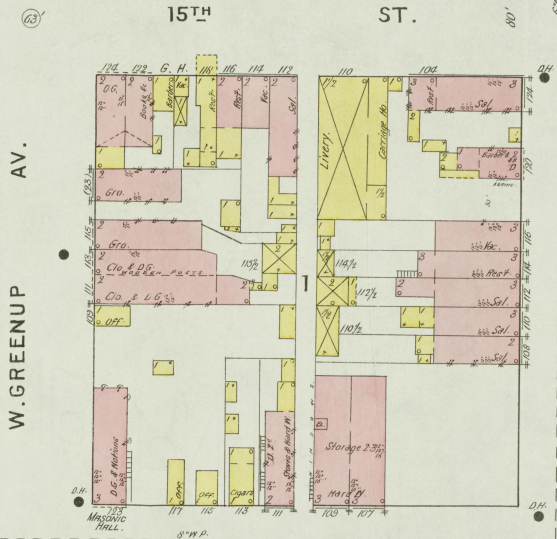
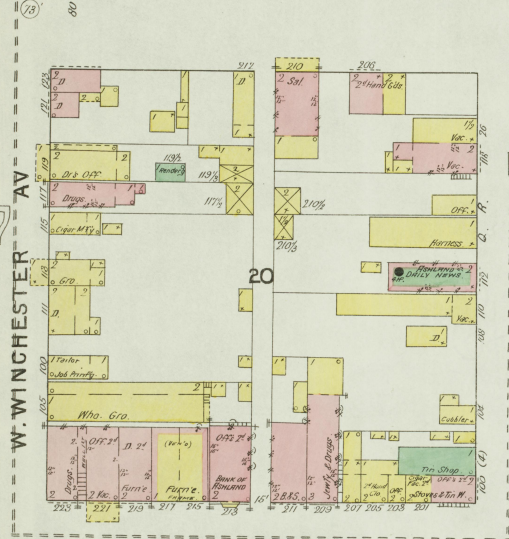
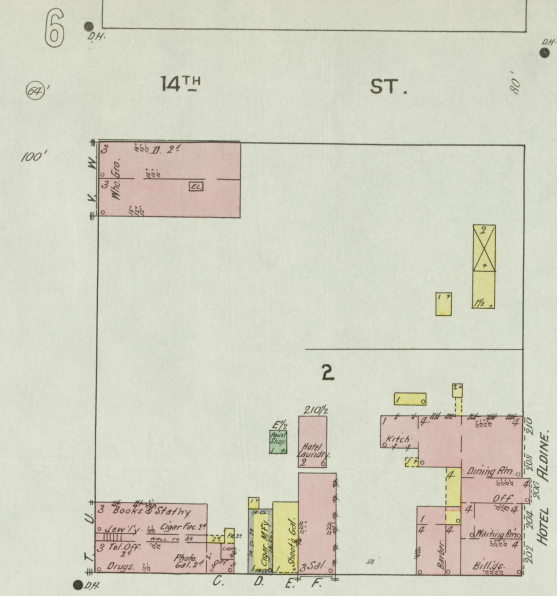
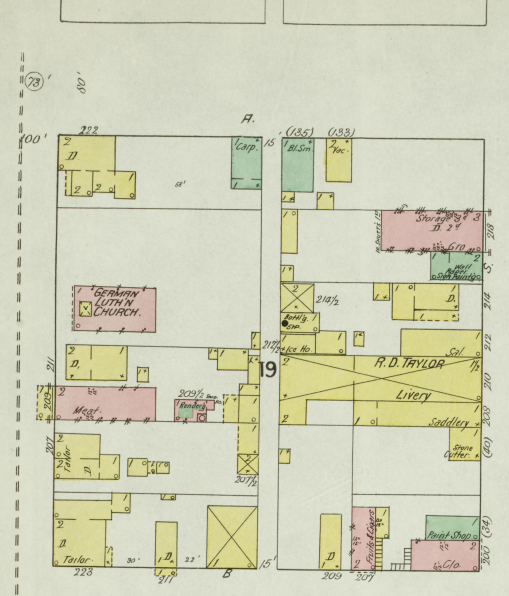
Division 31 JUL 1895 Library of Congress

L.R.V. 7445

FEB. 1895
ASHLAND
KY.

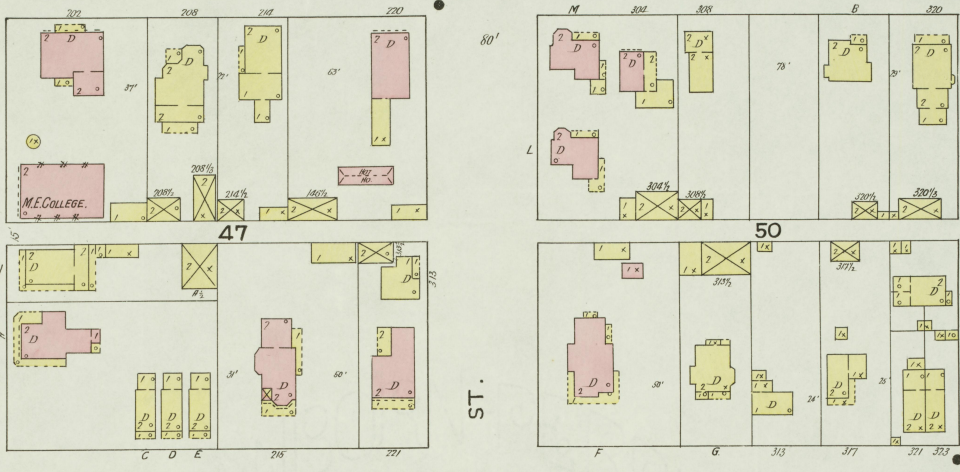


ASHLAND ELECTRIC
LIGHT & POWER CO.
702 S. BROADWAY - ASHLAND - KY.
BURNERS - FLOWERS & HAZARD - FUEL -
CABLE.

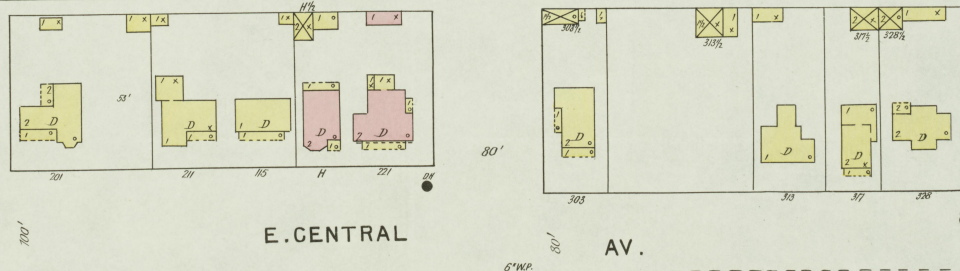
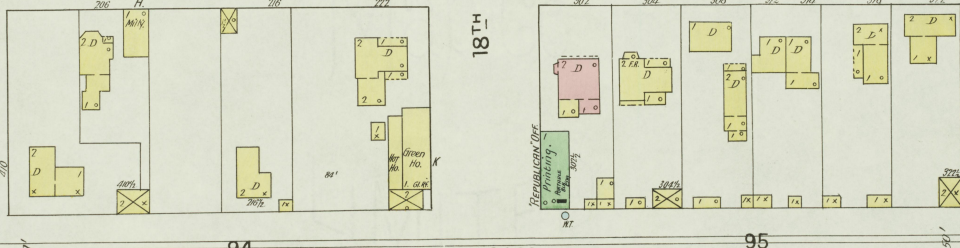


FEB. 1895
ASHLAND
KY.

E. WINCHESTER AV.

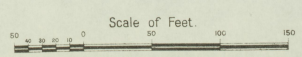


E. CARTER AV.



E. CENTRAL AV.

Map Division
31 JUL 1935
Library of Congress



Ohio River

10

FEB. 1895
ASHLAND
KY.

M.W. THOMAS
Saw & Planing Mill.

RIGHT WATCHMAN CITY WATER &
USE THE WOODS, BRUNNEN, FINE ROCKS,
BONNERS STEER, FUEL, WASTE SCOUR,
NO LIGHTS, NO HEAT.

TOS. ASHLAND FOUNDRY &
MACHINE SHOPS

RIGHT WATCHMAN CITY WATER & HEAT
CONVEY & SAW "B" ROAD, FINE CORN, HEAT,
SPRINKERS, LIGHTS, ETC.

E. FRONT AV.

AV.

H&CCL R.R.

CO. O'NEALS R.R.

ST.

ST.

ST.

8

E. GREENUP

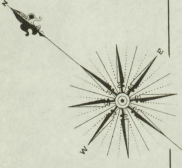
AV.

12

ST.

ST.

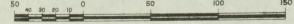
ST.



E. WINCHESTER

AV.

Scale of Feet.



Map Division
31 JUL 1925
Library of Congress

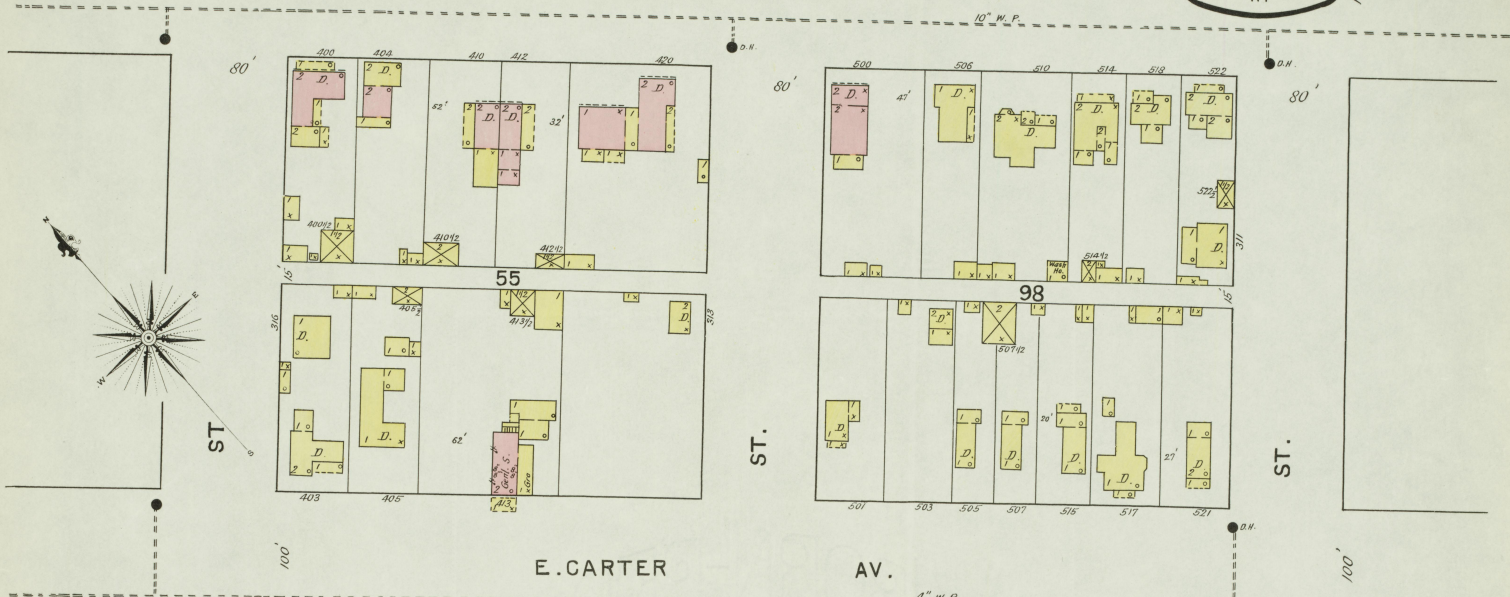
249

12

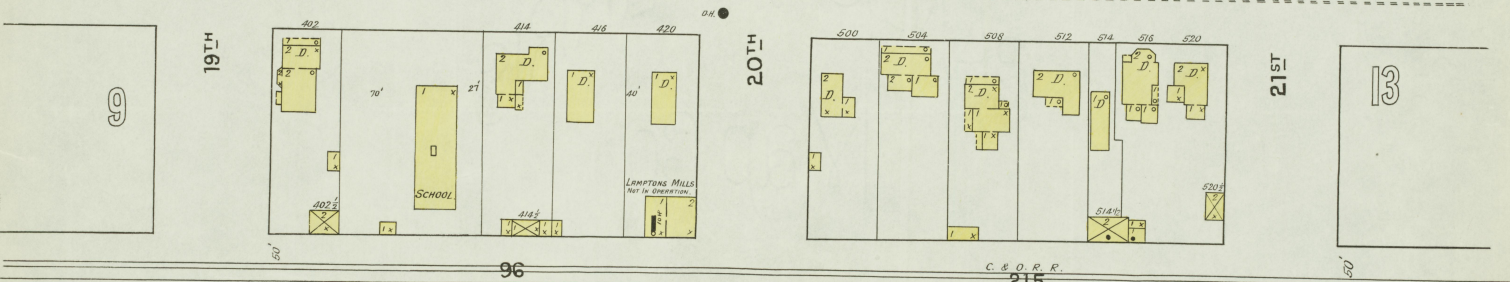
11

FEB. 1895
ASHLAND
KY

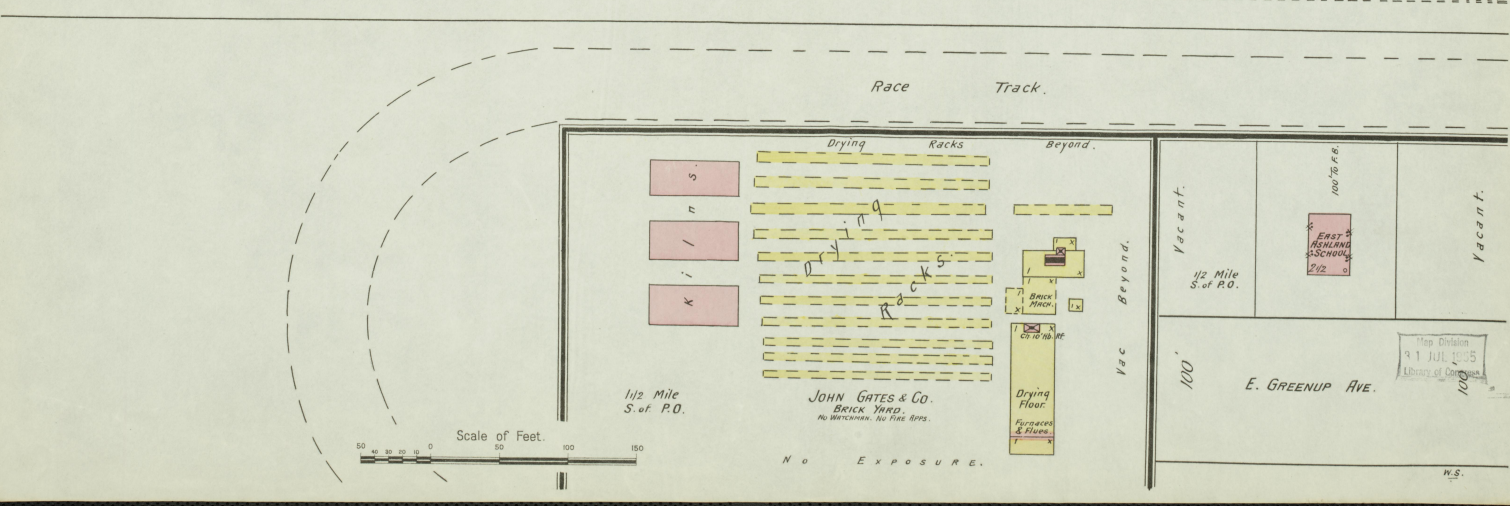
E. WINCHESTER AV.



E. CARTER AV.



E. CENTRAL AV.

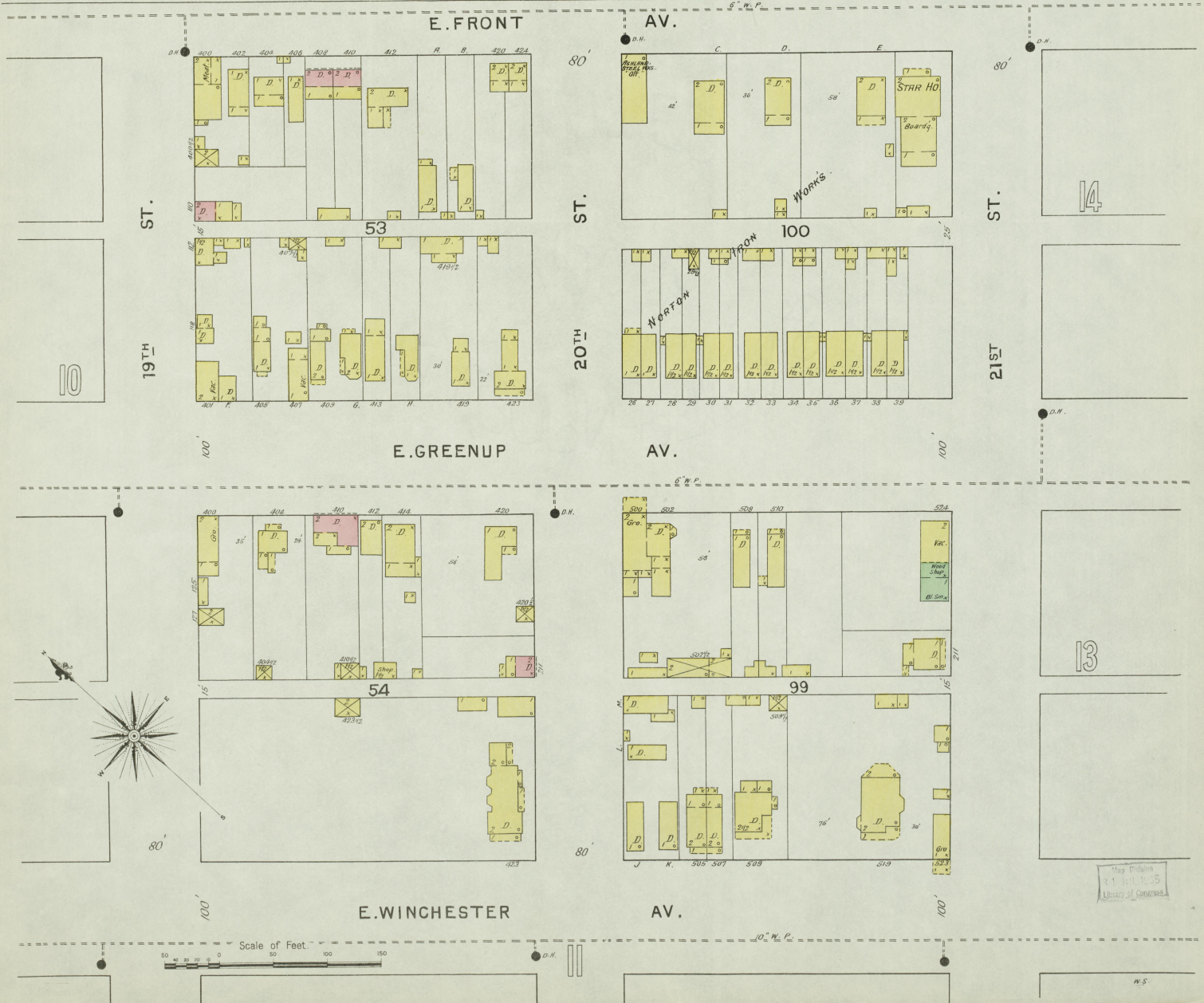
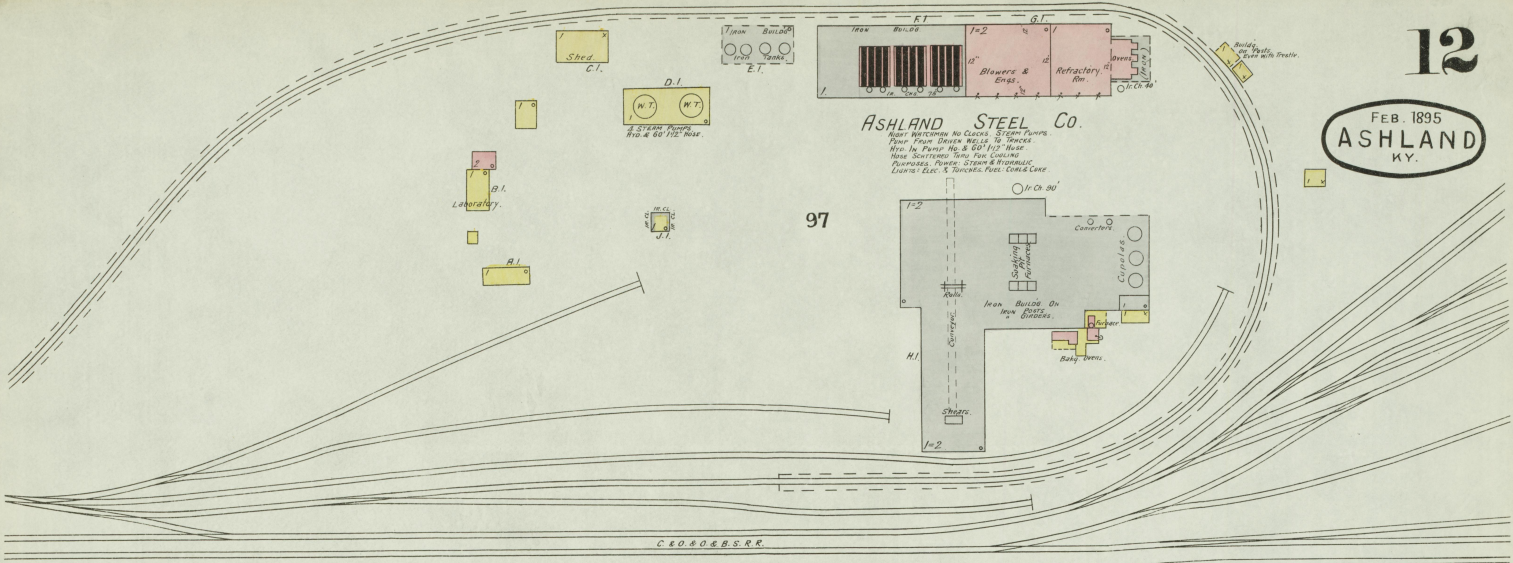


Scale of Feet.

JOHN GATES & CO.
BRICK YARD.
NO MATCHES. NO FIRE APPS.

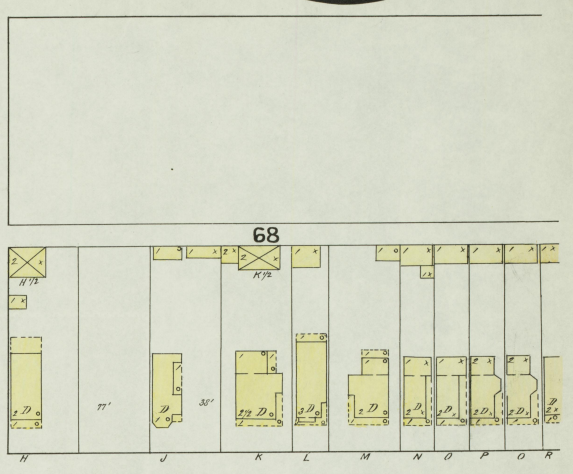
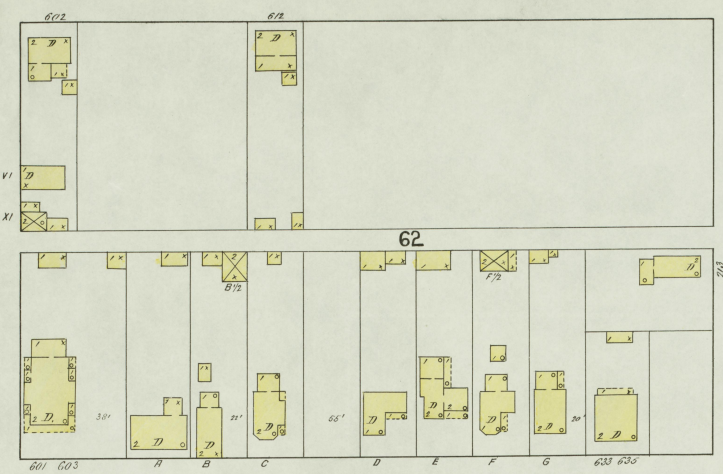
E. GREENUP AVE.

Map Division
31 JUL 1895
Library of Congress



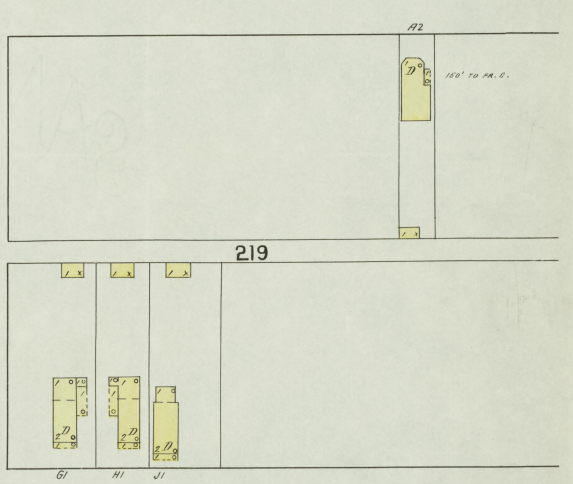
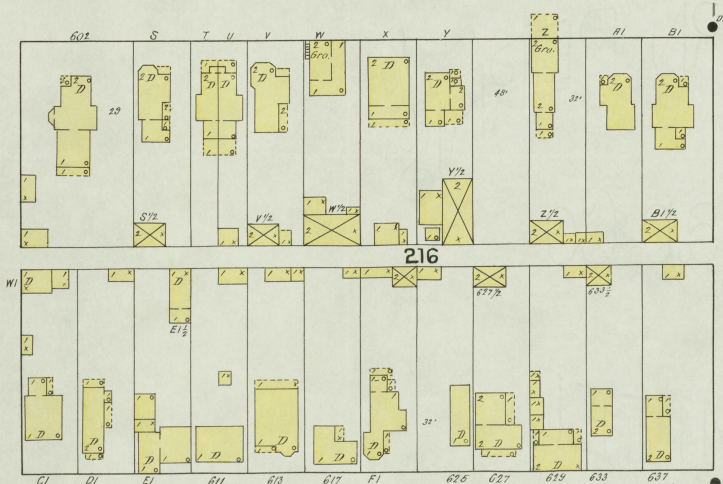
E. GREENUP

AV.



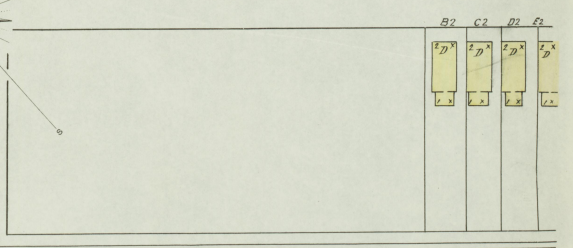
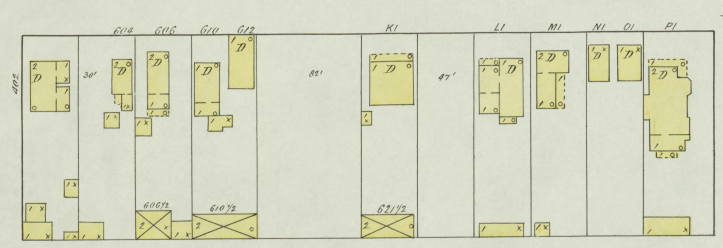
E. WINCHESTER

AV.



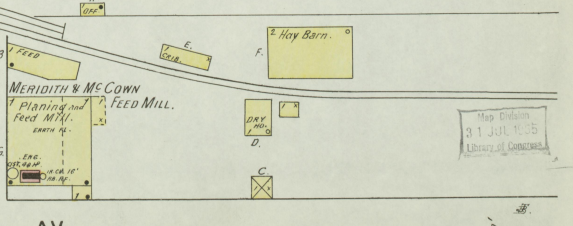
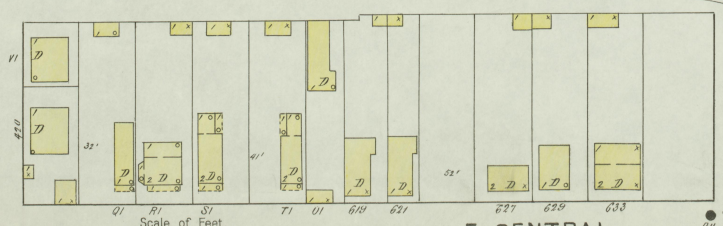
E. CARTER

AV.



102

103



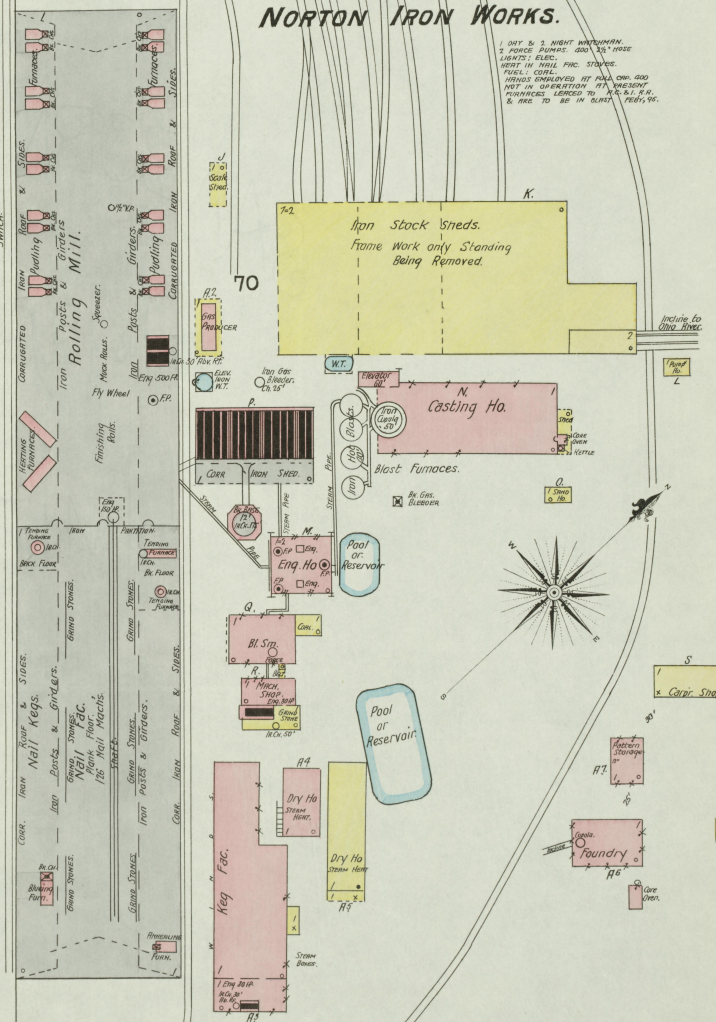
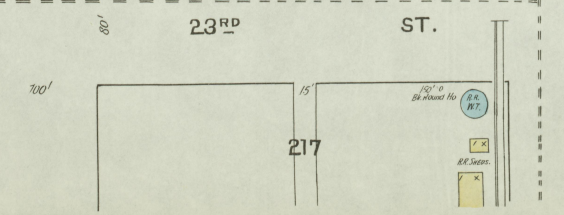
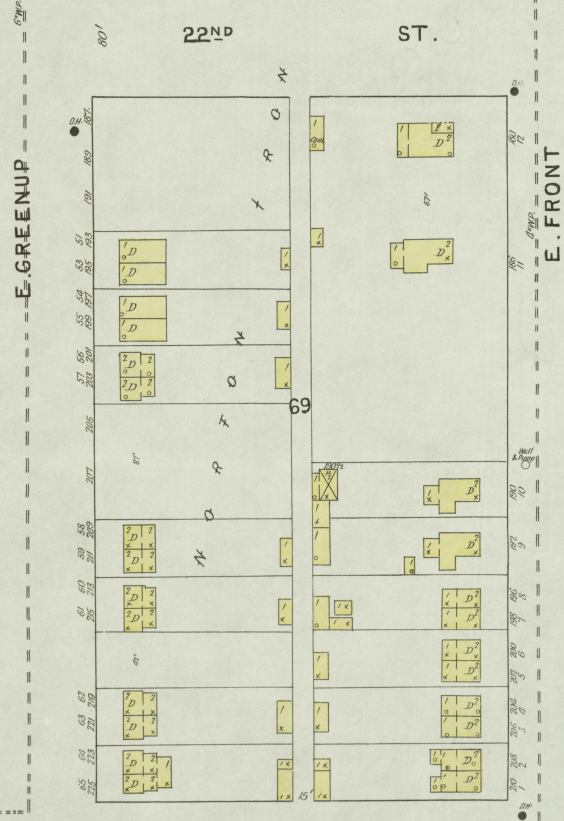
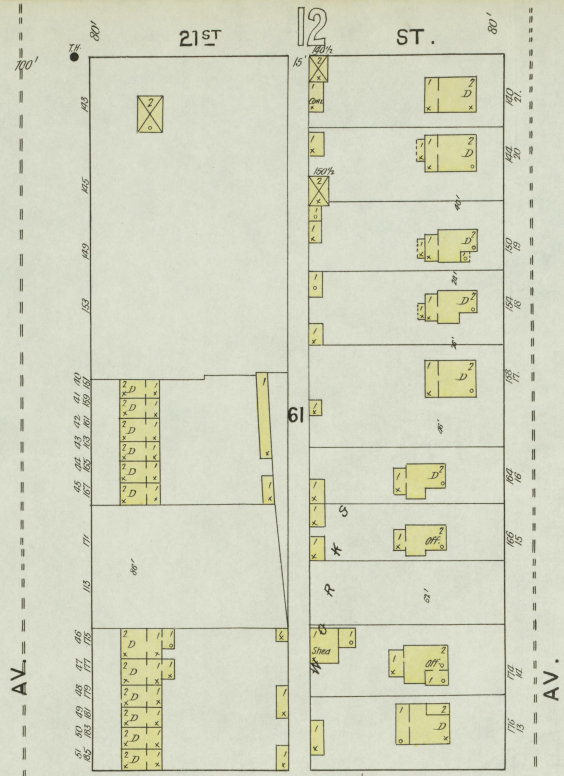
E. CENTRAL

AV.

MERIDITH & McCOWN
 Planning and
 Feed Mill.
 T. FEED MILL.

Map Edition
 31 JUL 18 95
 Library of Congress

Ohio River

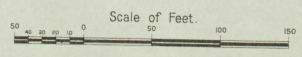


NORTON IRON WORKS.

1. DAY & 2. NIGHT WATCHMAN.
3. FORCE PUMPS. 600 TO 700 FEET.
4. CRANES. ELEC. & STEAM.
5. BEST IN TOWN FOR STEEL.
6. FUEL. COAL.
7. IRONS OBTAINED AT MILL OWN. 600 NOT IN OPERATION AT PRESENT.
8. PHYSICAL LOTS TO. 100 X 100. & ARE TO BE IN SURE FEET. 95.

Pool or Reservoir

Pool or Reservoir



Map drawn
3.1.11.15
Library of Congress

3

68

217

6 209

FEB 1895
ASHLAND
KY

