

Copy 1

STOLL FIELD • NOVEMBER 2, 1963 • OFFICIAL PROGRAM • 50c Est. Price .48  
Tax ..... .02

# KENTUCKY vs MIAMI

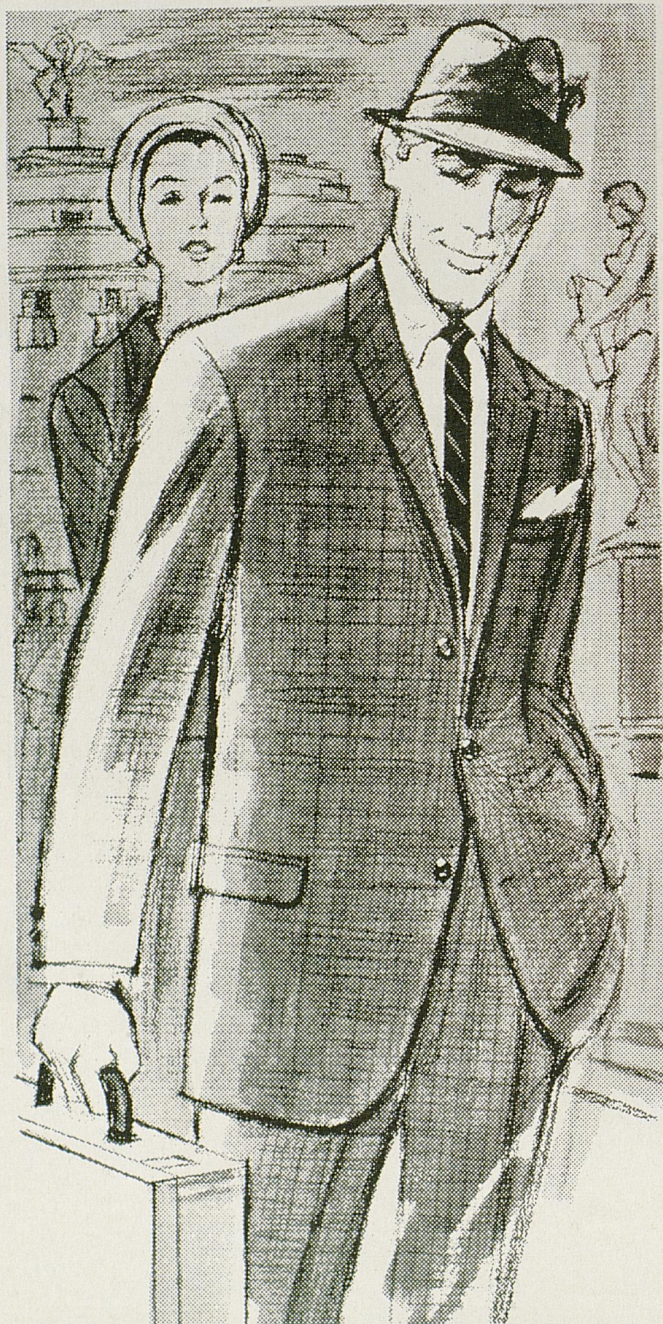


# Dawahare's

1817-1837 Alexandria Drive

Phones 277-5733 • 277-5734

*Gardenside Plaza*



## OTHER STORES

- ★ HAZARD
- ★ PIKEVILLE
- ★ WHITESBURG
- ★ NEON



PLENTY FREE PARKING  
STORE HOURS—10 a.m.  
till 9 p.m.  
Monday thru Saturday

*First National Charge*  
30 Day Charge—  
6 Month Revolving Charge



*Central Kentucky's Leading  
Department Store Since 1887!*

in DOWNTOWN LEXINGTON

Kentucky's Friendliest Shopping Center

The "WILDCAT" by



**OXFORDS**

- Black Grain
- Brown Grain

**18<sup>95</sup>**  
pair

- Hand-sewn Mocassion Construction
- Sizes 6½-13, A-B-C-D

**SLIPONS**

- Brown Grain
- Black Grain

Shoe Center — Main Floor

*Purcell's*

*... Always Shop Purcell's For Your Family, Your Home, Yourself!*

# U.K. FOOTBALL



with **BILL SORRELL**

and **TED GRIZZARD**

## WVLK • 590

**PLAY - *by* - PLAY ... HOME *and* AWAY**

**PRESENTED BY**

***Kentucky Central***  
***Life Insurance Company***



*Your Key to Security*  
Since 1902

*Kentucky's Oldest Life Insurance Company*

*Now Serving 30 States*

**HOME OFFICE KENTUCKY CENTRAL BUILDING**  
**LEXINGTON, KENTUCKY**

# Wildcat Gridiron News

## KENTUCKY vs. MIAMI

Miami's Florida Hurricanes, a "snakebit" gridiron aggregation to which trouble seems to attach itself, blow into Stoll Field this afternoon seeking to create an aerial disturbance equal to blowing Kentucky's Wildcats right out of their own stadium.

That the Hurricanes have the force capable of accomplishing this is evident. In the person of aerial artist extraordinary George Mira, Miami has the nation's second most effective passer who is expected to fill the air with footballs in what could well be the strongest test yet for the pass-defense-troubled 'Cats.

Kentucky's defense against aerial operations has been hard put this season to stand off the challenge of a top-flight passer week after week. Virginia Tech's Bob Sweickert signalled what was to come as he opened the UKat's season with an aerial bombardment that netted 103 yards on 10 completions; Perry Lee Dunn of Ole Miss collected 140 and three TD's through the air; Auburn's Jimmy Sidle pulled a switch by utilizing the pass as a dodge to gain 146 yards on the ground; and Georgia's tremendous Larry Rakestraw connected 18 times in 29 tosses to pick up 180 yards and a pair of scores.

While the Kentucky secondary last week yielded its greatest gain to an enemy passer, both UK Coach Charlie

Bradshaw and neutral observers paid credit to its improvement in the face of some sensational flinging. The same strong right arm only a week before had taken the wind out of the Hurricanes' sails with a record-busting yardage pick-up of 405 on 25 strikes in 38 attempts.

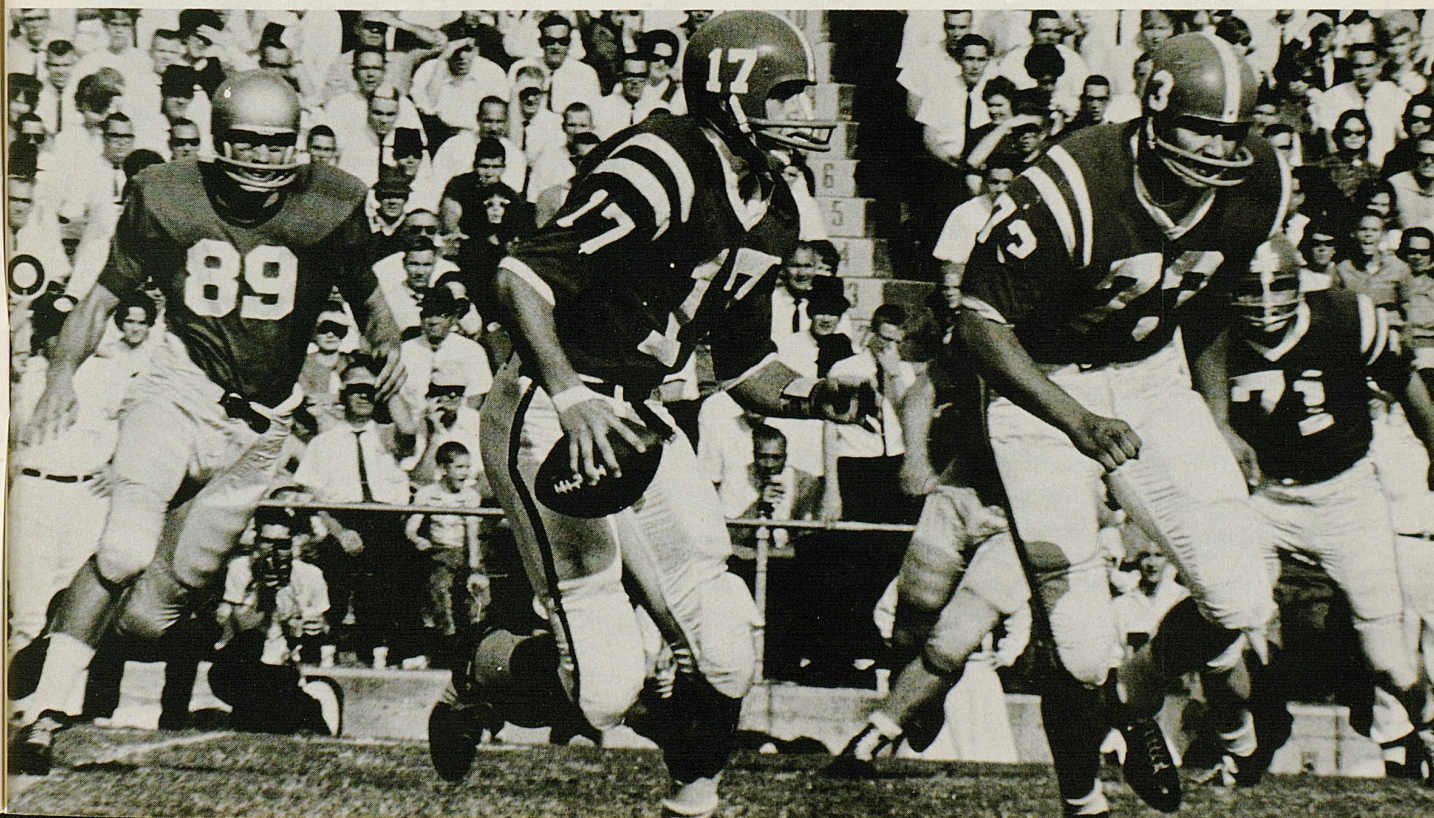
Mira, having a terrific year despite the troubles of his team which (like Kentucky) is looking for its third victory of the campaign, served notice he is on the right track by connecting for 25 completions and 340 yards to up his collegiate career total to 3,769 yards—more than two miles. His next completion will be No. 300.

Kentucky counters with its own aerial ace in Rick Norton, a brilliant and steadily improving soph showing 46 connections in 107 throws for an even 700 yards and five touchdowns.

The Wildcats (2-4 on the season) lead Miami in the series five games to two but the Hurricanes (now 2-3 and idle last week) own the last two victories.

Edited by Ken Kuhn, Director of Sports Publicity  
Published by University of Kentucky Athletics Association  
Represented for National Advertising by  
Spencer Advertising Co., New York

**ROAD RUNNER**—Demonstrating his new-found prowess as a running quarterback, Kentucky's brilliant and steadily improving Rick Norton sets off on a run that was to net him a sizeable gain in the second quarter of last week's Georgia game. Helping in the play designed to keep the defense honest for the passing attack is tackle Sam Ball (73). Bulldog end Glenn Creech (89) is the potential tackler stalking Norton from the rear.





**the honorable  
BERT T. COMBS**

Governor of Kentucky

Closing out a four-year term as Governor of the Commonwealth of Kentucky, Bert Thomas Combs is able to look back with a special degree of pride on a distinguished career of public service that carried him up through the ranks to the chair of chief executive.

The 52-year-old public servant, who in his capacity of Governor also serves as chairman of the University of Kentucky Board of Trustees, began his career as a lawyer immediately upon graduation from the UK College of Law in 1937 and later entered political life when he became city attorney of Prestonsburg. He next held the post of Commonwealth Attorney for the 31st judicial district of the state and from 1951 to 1955 served as a judge on the state's highest tribunal, the Court of Appeals.

His distinguished background also includes service as a captain in the Judge Advocate General's Department and he was the recipient of both the bronze star and the medal of merit during Army service.

During his administration as Governor, an office to which he was elected in 1959, the State of Kentucky has made outstanding progress in many fields—including education, agriculture, industrial development, highway construction and social welfare.

Governor Combs is a native of Manchester in the Eastern Kentucky mountain area and worked his way through Cumberland College prior to entering the University Law School. He is married to the former Mabel Hall and they have two children, Lois Ann and Thomas George.



***Sports lovers of the world, unite . . . let's all go Wildcat-ing!***

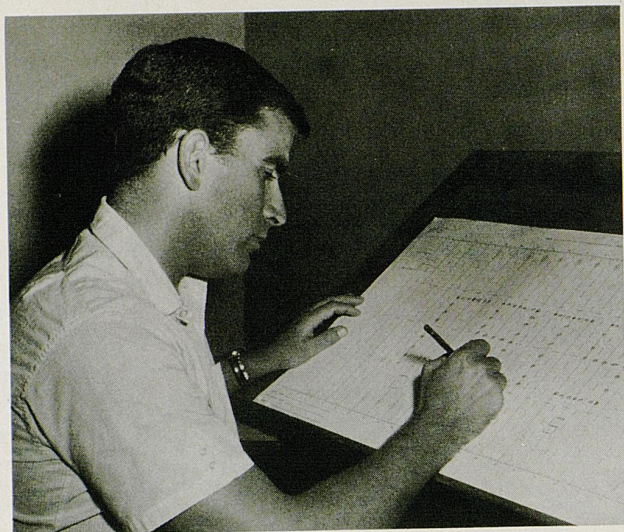
Face it—if you're the rocking chair, watch-it-on-TV type, forget the wild, wild '64 Buick Wildcat. But if you like your action furious and first-hand, Wildcat is for you! You can bark your signals to a regular 325 hp V-8 formation, or really take to the air with a 340\* or 360\* hp passer. Three scat-back transmissions add to your fun: 3-speed synchromesh; 4-speed synchro stick shift on the floor\*, or Buick's new trigger-quick Super Turbine 400 automatic\* (very sparing with gas, too!). Four new models: 4-dr. hardtop; 2-dr. sport coupe; 4-dr. sedan; convertible. Give one a workout; see why we say . . .

\*Optional at extra cost.

Buick Motor Division

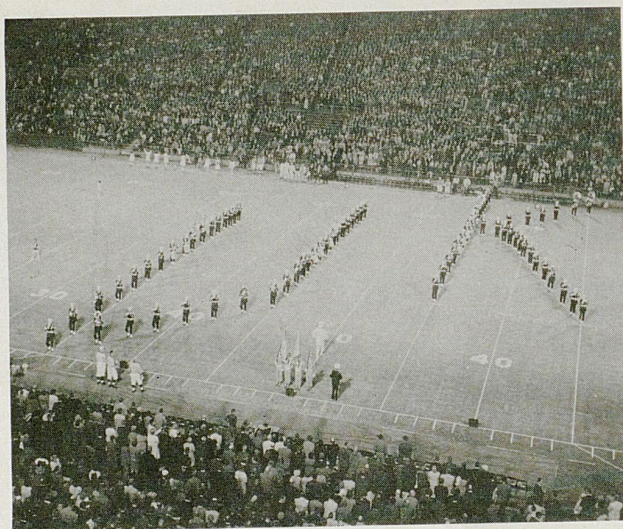
***above all, it's a BUICK!***

## *All-American Spirit at U. of K.*



LEADER OF THE BAND—In his second year as director of the University of Kentucky "Marching 100" band is Phillip Miller (pictured above). The transplanted Texan is personally responsible for the varied and intricate formations that make up the interesting band shows at halftime and each movement is charted out in advance.

ON, ON U. OF K.—The Kentucky band, once dubbed by sportswriters as "The Best Band In Dixie," demonstrates how it still lives up to the tradition by forming this slanting UK during the Mississippi game. This formation is only one in a vast repertoire that lend added color to Wildcat football games and help boil up All-American student spirit.



EIGHT CHEERS FOR WILDCATS — Among the most rabid supporters of the Wildcats are the cheerleaders, who virtually "live and die" as the fortunes of their favorites fluctuate on the field. This year's cheerleading corps includes attractive coeds (back row, left to right) Mary Gail McCall, Ida Mae McLaughlin, Cissy Snyder, Ginger Martin, Judie Wylie; (front) Ann McDonald, Paula Choate and Debbie Delaney.







## **JOHN W. OSWALD**

President  
University of Kentucky



### **University's New President Knows Value of An Athletic Program . . .**

Dr. John Wieland Oswald, new president of the University of Kentucky, is an educational administrator who believes organized athletics have a definite place within the university community.

Having himself been a college athlete, Dr. Oswald is now one of the staunchest supporters of the teams wearing the Blue and White. However, he advocates that any campus athletic program should be kept within the proper perspective and that over-adulation should be avoided.

Dr. Oswald served as vice-president for administration at the University of California before becoming the sixth chief executive of UK.

The native of Minnesota did his undergraduate work at DePauw University where he majored in botany. He played varsity football—captaining the DePauw eleven in 1937—and earned letters in basketball and track.

He was awarded a Ph.D. degree in plant pathology at the University of California in 1942 and entered the U.S. Navy the same year. As a PT boat skipper and later, as a divisional commander, he participated in over 50 missions in the Mediterranean.

After World War II, Dr. Oswald returned to academic life and advanced through the ranks at the University of California. He has published over 70 papers on plant pathology investigation and has done research work in the Netherlands under Fulbright sponsorship.

In 1962, he was named to the Sports Illustrated Silver Anniversary All-America, an award the magazine confers upon former college football players for outstanding achievement in their chosen professions.

Other members of the Oswald family are his wife, the former Rosanel Owen of Alabama, their two daughters, Elizabeth and Nancy, and John, Jr.

## ALONG THE WILDCAT TRAIL

### KENTUCKY 33, VIRGINIA TECH 14

It took only 14 seconds for University of Kentucky's rookie-dominated Wildcats to prove that inexperience is only a state of mind and the '63 sophomores built that premise into a thrilling, 33-14 trouncing of Virginia Tech before a season-opening audience of 35,000 at Stoll Field. The victory was Kentucky's first since 1958 in an opening game.

Dazzling soph scatback Rodger Bird, the Corbin Comet who bids to be the greatest of the fabulous athletic Bird brothers, raced back the game-opening Gobbler kickoff a near-record 92 yards to a touchdown that put Kentucky's thoroughbreds off and running. The slender, 5-11 and 184-pound speedster paced the most explosive UK offense seen in many a moon by racking up another 157 yards from scrimmage in 19 trips for an incredible, 8.3 average during the remainder of the contest.

---

### MISSISSIPPI 31, KENTUCKY 7

Defending Southeastern Conference champion Mississippi, itself humiliated a week earlier by a scoreless tie, unleashed all its offensive fireworks in an awesome display of rebounding strength that found the Kentucky defense wanting to the tune of a decisive, 31-7 victory.

The fired-up Rebels put three points on the Stoll Field scoreboard with a 31-yard field goal the first time they had the ball and exploded for three "cheap" touchdowns during the second period for a 24-0 halftime advantage that rocked Kentucky hopefuls to the core. Unable to cope with the fearsome power of Ole Miss and victims of their own mistakes—particularly pass defense—the Wildcats settled down in the second 30 minutes of action to hold the visitors to just one more score.

Coach Charlie Bradshaw's sophomore-dominated force avoided the humiliation of a shutout only through the alertness of fullback Ken Bocard, who picked off an Ole Miss pass midway of the final quarter and scooted 22 yards to score.

---

### AUBURN 14, KENTUCKY 13

Charlie Bradshaw and his youthful Wildcats came to win and, when the slashing battle in Auburn's Cliff Hare Stadium had roared to a close, Tiger partisans were the first to admit that Kentucky had the better team at the end and the home club was indeed lucky to come out on the long end of a 14-13 count.

After a frustrating first half of action in which Auburn's powerful backs punched away almost at will for long yardage through a porous Kentucky defense, the Blue Grass eleven suddenly came to life after the intermission. The Wildcats, behind the vastly improved passing artistry of quarterback Rick Norton and the hard running of other backs, completely dominated the second thirty minutes.

Only the failure of a gamble (which everyone praised) in the third period and a field goal try that came close during the final stanza kept the Kentuckians at bay as they displayed a vastly improved brand of play. The key play of the afternoon came after Kentucky had rallied to push over a second touchdown. Going for broke, Norton pitched a two-point PAT strike to halfback Bob Kosid. The ball bounced away as Kosid was hit hard by Auburn defenders and then almost caught second handed by end Rick Kestner.

### KENTUCKY 35, DETROIT 18

Behind the unlimbered passing arm of quarterback Rick Norton and the sensational running of halfback Bob Kosid, Kentucky's victory-hungry Wildcats rolled easily past out-classed but game Detroit by a 35-18 count that evened the season for the home-standing Big Blue.

Norton, enjoying the finest hour of his varsity career and completely overshadowing the Titan's Tom Zientek, notched 171 big yards for the UK cause as he tossed eight out of 17 strikes and kept the defense honest by running for another 30 yards. Running mate Kosid took a share of the spotlight by accounting for 112 yards over the ground—including a spectacular, 82-yard jaunt in the first period for the Cats' opening points and another marker later.

Kentucky swept to a 20-6 halftime advantage and increased the count to 28 to 6 in the third period after Norton scored on a keeper play and Darrell Cox unveiled a two-point PAT pass. With the contest safely in the bag, the UKats let up and Detroit came storming from behind to tally two more touchdowns in the third. UK added its final points in between the UD scores and both went scoreless in the final 15 minutes.

---

### LOUISIANA STATE 28, KENTUCKY 7

Almost was not good enough to beat the fired-up Louisiana State Tigers before 68,000 howling Homecoming fans in Baton Rouge and the visiting Wildcats from Kentucky lost a typically close scrap by a 28-7 count that failed as usual to reflect either the ferocity or closeness of the fight.

Battling their hearts out but simply unable to cope with a devastating LSU offense—which strangely stayed on the ground for all but one play during the evening—the Wildcats kept within striking distance until the final period. Relying mainly on the strong right arm of soph quarterback Rick Norton, the UKats threatened constantly through the first half and picked up what proved to be their only score in the second quarter as Norton went over on a keeper.

LSU iced the all-out struggle in the fourth frame after being held in check during the preceding 15 minutes by putting 14 points on the scoreboard. The markers were the first points allowed any foe this season in the final quarter by an otherwise porous defense.

---

### GEORGIA 17, KENTUCKY 14

Determined to give 30,000 Homecoming fans their money's worth, Kentucky's young Wildcats rode the passing arm of brilliant soph quarterback Rick Norton to a pair of touchdowns and posed a strong threat to upset the dope bucket with a third marker near game's end before bowing to Georgia, 17-14.

Although the offense and some phases of the defense were at one of the peaks of the campaign, the Wildcat defenders were unable to fully stop the sensational throwing of the Bulldogs' Larry Rakestraw. The game developed as predicted into a pitchers' battle and when the smoke cleared, Norton, the sophomore, had bested SEC total offense leader Rakestraw in this phase of operations and more than held his own in passing—accounting for two TD's and missing a winning marker with time running out as his receiver was dropped at the three.

## **BERNIE A. SHIVELY**

Director of Athletics  
University of Kentucky



### **Bernie Shively — A Man Of Many Talents . . .**

Nationally recognized for his direction of one of the nation's most balanced collegiate athletic programs, University of Kentucky's veteran Director of Athletics Bernie A. Shively is truly a gentleman of many talents.

He gained his greatest fame as a football All-America guard at Illinois in 1926 on the same grid outfit made famous by the immortal Red Grange. And, demonstrating a claim to being one of the finest all-around athletes in Illinois' history, Shively also laid claim to the Big 10 heavyweight wrestling crown and annexed letters in track before graduating in 1927.

Following his graduation, Shively came to Kentucky as a line coach in football. During his 35 years of service to the Kentucky athletic program, "Shive" also served as head football coach one season (1945), track coach and baseball coach as well as heading up the University's Physical Education Department. He became Director of Athletics in 1938.

For almost as long as the Southeastern Confer-

ence played a post-season basketball tournament, Shively served as chairman and the experience had stood him in good stead as he now directs the University's own highly-successful Invitational Tournament and supervises the NCAA Basketball Tournament in the capacity of committee chairman.

Shive also tried his hand at basketball officiating in the SEC for about 20 years and served several seasons as Supervisor of Officials for the Ohio Valley Conference. He is a past chairman of the NCAA's summer baseball committee and since 1954 has been president of the SEC Coaches and Athletic Directors Association. In addition, he has found time to be active in civic and University projects.

A native of Paris, Ill., Shively and his wife, Ruth, have two children. A son, Doug, was co-captain of the Wildcat football team in 1958 and now is an assistant grid coach at Virginia Tech. Daughter Suzanne was a Phi Beta Kappa graduate of UK in 1957.

**WLEX-TV**

NBC CBS

**CHANNEL**

**18**

*For Complete Football Coverage!*

# U OF K FOOTBALL WITH COACH BRADSHAW

Head Coach Charlie Bradshaw brings you complete game films and personal comments.

**SUNDAYS  
at 5:30 PM**



Brought to You by *MR. WIGGS* Discount Department Store

## NCAA COLLEGE FOOTBALL

Top collegiate games of the week!

**SAT. AFTERNOONS**

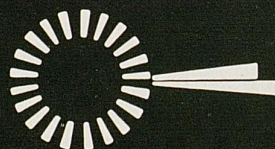
## CLEVELAND BROWNS

Pro football at its exciting best!

**SUN. AFTERNOONS**

**KEEP UP WITH SPORTS — WATCH WAYNE BELL DAILY**

**MR. WIGGS**  
DISCOUNT DEPARTMENT STORE



ON NEW CIRCLE ROAD BETWEEN RICHMOND ROAD AND WINCHESTER ROAD, NEAR LIBERTY PIKE

*Presents*

# KENTUCKY FOOTBALL

With

**HEAD COACH CHARLIE BRADSHAW**

**Every Sunday from 5:30 to 6:30 p.m. on Channel 18**

## CHARLIE BRADSHAW

Head Football Coach  
University of Kentucky



## Wildcat Coach Has Qualities For Success . . .

The personification of qualities of inner toughness, outwardly serious demeanor, quiet determination, ability, confidence and integrity . . . That's Kentucky's head football coach.

Charlie Bradshaw, 38-year-old ex-Wildcat player and assistant coach, fulfills all these qualities that are the background for success and goes a step further . . . He's an inspirational leader who exudes the toughness that it takes for those around him—staff and players—to get the job at hand done in a way that will pay off with success.

He believes in the direct approach and in the short span of just one season has instilled his formula in the minds of his charges. Kentucky footballers are now convinced that success is approached only through determined hard work.

Bradshaw's football philosophy was schooled into him as a player by Paul (Bear) Bryant and influenced by nine years of experience in an

assistant coach capacity at UK and Alabama.

Born and raised in Montgomery, Ala., Charlie played football at Sidney Lanier High before coming to Kentucky as a 1942 gridder. He didn't see any action that year and withdrew from the University after one semester to enter the Marine Corps.

He returned to UK to play end for the 1946, '47 and '48 seasons and for three games in 1949 before being ruled ineligible by the Southeastern Commissioner. He remained on the Bryant staff as a student assistant and then returned to Sidney Lanier as a coach and co-ordinator in 1950.

In 1954, he came back to Kentucky as an aide on the Blanton Collier staff and stayed until 1959 when he moved to Alabama and an offensive coaching job under Bryant.

He was hired to replace Collier here on Jan. 10, 1962, and was extended a four-year contract.

## 1963 FOOTBALL SCHEDULE AND RESULTS

Date	Opponent	Site	UK	Opp.	Date	Opponent	UK	Opp.
Sept. 21	*Virginia Tech (H)	.....	33	14	Oct. 26	Georgia (HC)	.....	14 17
Sept. 28	*Mississippi (H)	.....	7	31	Nov. 2	Miami (Fla.)	.....	Lexington
Oct. 5	Auburn (A)	.....	13	14	Nov. 9	Vanderbilt	.....	Nashville
Oct. 12	*Detroit (H)	.....	35	18	Nov. 16	Baylor	.....	Waco
Oct. 19	*Louisiana State (A)	.....	7	28	Nov. 23	Tennessee	.....	Lexington

\* Night game.

**LEXINGTON  
PHOTO  
ENGRAVING  
CO.**

223 W. Short  
Tel. 255-5015

If your **GOAL** is  
**"Fast Production — Fine Reproduction"**  
for your printing needs,  
**RUSH** to left **GOAL** for letterpress plates,  
or  
**RUSH** to right **GOAL** for offset plates.  
Let us **TACKLE** your plate-making to **END**  
your problems. **PASS** them to our **CENTER**  
and you will **GUARD** against a **KICK** in the  
final **RUN**.

**LEXINGTON  
PHOTO  
LITH  
INC.**

1600 N. Lime  
Tel. 299-1378

# Now In Lexington...

## ONE OF THE SOUTH'S *Finest* Motels



- 110 Luxurious Rooms • Cocktail Lounge
- Banquet & Meeting Rooms • Two Dining Rooms
- Swimming Pool & Patio • Dancing Nitely



**Imperial House Motel**

U.S. 68 Waller Ave. at Harrodsburg Road  
Phone 255-2540 for Reservations





Left to right—Ralph Hawkins, George Sengel, Jim Carmody, Dave Hart, Bud Moore, Head Coach Charlie Bradshaw, Assistant Head Coach Matt Lair, Homer Rice, Bill Jasper, George Boone and Ray Callahan.

## Wildcat Coaching Staff

University of Kentucky's football coaching staff this season presents a composite picture of youth plus experience. Statistics on Head Coach Charlie Bradshaw and his 10 full-time aides provide an average look of only 33 years of age but a background of no less than nine years in the profession of tutoring football. All told, the staff represents 101 years of coaching experience.

**MATT LAIR (Kentucky '48)**—First UK aide ever to hold the title of Assistant Head Coach . . . Played as a blocking back and guard on same Wildcat teams as Coach Bradshaw . . . The 39-year-old North Middletown native has background of 16 seasons of grid tutoring, including five previous years at UK (1954-58), two at Texas A & M, one with Texas Tech . . . Works primarily with defensive line.

**HOMER RICE (Centre '51)**—Entered collegiate field in 1962 after nine championship seasons and seven undefeated campaigns during 11 years in Kentucky-Tennessee high schools . . . Aggregate record 101-9-7 for period . . . Won seven "Coach of the Year" awards . . . Little All-America QB at Centre . . . The 36-year-old native of Ft. Thomas is charged with making UK's offensive operations go.

**DAVE HART (St. Vincent '50)**—Newly assigned to the responsibility of defensive coach of the Wildcats, Hart is former highly-successful schoolboy tutor in Pennsylvania . . . Compiled 86-18-3 record in 11 years, last eight at Johnstown . . . The 37-year-old native of Con-nellsville, Pa., was the state's AAA "Coach of the Year" in '58 . . . Invaluable recruiter.

**GEORGE SENDEL (Kentucky '48)**—Louisvillian Sengel's career as a Wildcat wingman overlapped that of Coach Bradshaw by a couple of years and his former teammate asked Sengel to stay on the staff he had joined in 1961 . . . The 40-year-old Air Force vet had nine years of coaching in schoolboy ranks in Florida and Kentucky prior to becoming UK end coach.

**BUD MOORE (Alabama '61)**—A 23-year-old Birmingham, Ala., native, Bud picked up his initial playing and coaching experience under Paul Bryant and Charlie Bradshaw at Alabama . . . He was a star end and tackle for the Tide in the 1958-60 period, served briefly as student assistant and coached one year at Gadsden (Ala.) High before joining Bradshaw staff at UK in 1962.

**GEORGE BOONE (Kentucky '61)**—One of the most determined players ever to wear the blue and white of UK, Boone started out on his own but soon won scholarship aid and became outstanding tackle . . . The 25-year-old Louisvillian stayed on Wildcat coaching staff in part-time role after completing eligibility in 1960, became regular coach following year and retained by Bradshaw as a line assistant.

**RALPH HAWKINS (Maryland '57)**—One of the most valuable coaches on the staff, Hawkins has background of collegiate and professional play plus coaching experience in both schoolboy and college ranks . . . The 28-year-old bachelor from Washington, D.C., was freshman coach at Maryland before joining New York Titans . . . Coached high school ball in D.C. and served as backfield assistant at SMU.

**BILL JASPER (Tennessee '52)**—A native Kentuckian from Somerset who traversed a route through enemy territory enroute to joining the Wildcats, Jasper is former star linebacker at Tennessee . . . Joined the Bradshaw staff in 1962 with successful record for 10 years' work in Kentucky and Tennessee high schools . . . Supervises gridders' academic program . . . 34 years old.

**JIM CARMODY (Tulane '56)**—Newest addition to the Bradshaw staff, Carmody transfers allegiance from alma mater Tulane where he was an outstanding center and later (1961-62) an assistant coach . . . Coaching background of the 30-year-old New Orleans native also includes three-season stint at Holy Cross and championship year with Army team in Korea . . . Works with UK freshmen.

**RAY CALLAHAN (Kentucky '56)**—A newcomer to the staff but no stranger in Kentucky grid circles, 30-year-old former UK guard standout Callahan enters the collegiate field for the first time after successful high school career . . . The Lebanon native capped fourth season as head coach at Danville High by winning state AA title in 1962 and picking up personal honor as AA "Coach of the Year."

*He gives 'first string' service . . .*

**THE FRIENDLY MAN WITH THE BETTER BRAND --**

your Good Neighbor Ashland Oil Dealer. Always accommodating. Willing to take time to perform whatever special service you may need. Willing to give more of himself—and his services—because he takes pleasure in pleasing you. *This is the friendly man of Ashland Oil.*

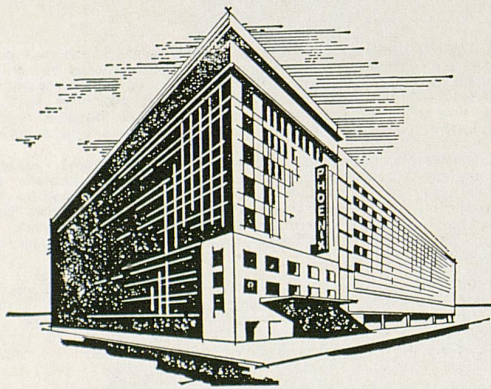
Meet him. And try his top quality Ashland Oil products.

You'll see why more and more Kentuckians are driving in at the Ashland Oil Sign . . . whenever they need services or products.



**ASHLAND OIL & REFINING COMPANY**  
Ashland, Kentucky

*Lexington's Largest and Finest!*



Located in the heart  
of the Bluegrass  
120 E. Main St.  
Downtown Lexington, Ky.  
Phone 255-3210

FEATURING

Le Deauville

RESTAURANT

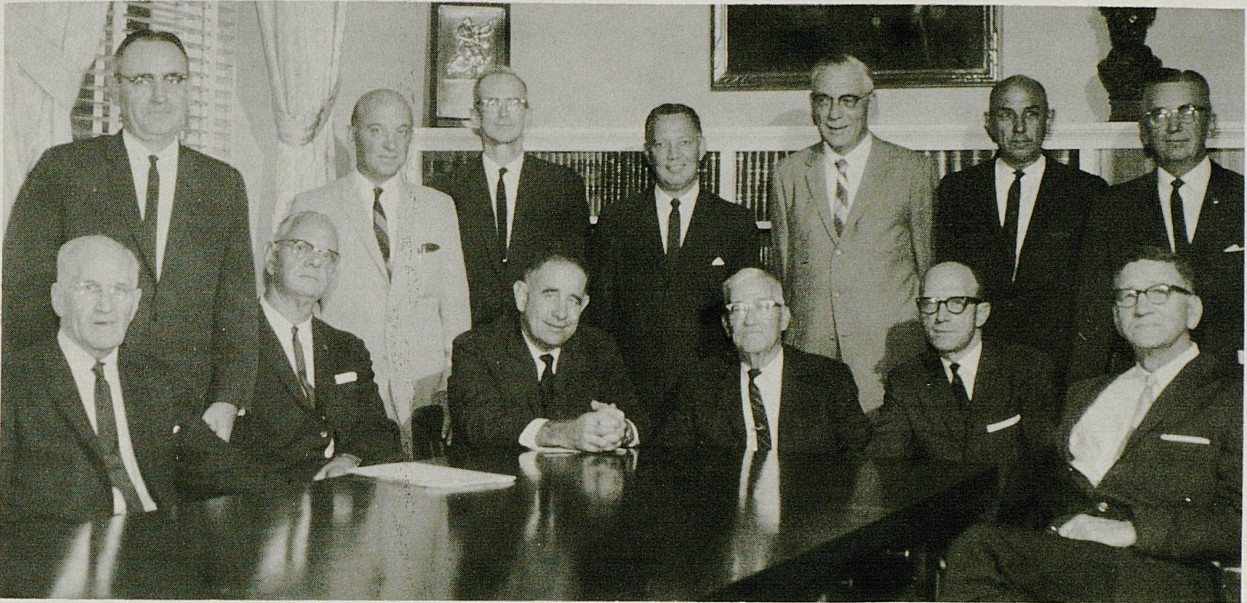
and LOUNGE

- FREE PARKING
- BEVERAGE & FREE ICE MACHINE  
ON EACH GUEST FLOOR
- 100% AIR CONDITIONED
- TV IN ALL ROOMS
- ALL ROOMS REMODELED  
AND REDECORATED
- COFFEE SHOP AND DINING ROOM  
WITH ECONOMICAL PRICES

**PHOENIX HOTEL**



# UNIVERSITY OF KENTUCKY ATHLETICS BOARD



Members of the Board of Directors of the University of Kentucky Athletics Association include the gentlemen pictured above. Seated, from left to right, are Prof. John Kuiper, Director of Athletics Bernie Shively, President John W. Oswald (chairman), Dr. D. V. Terrell, Dr. A. D. Albright (vice-chairman) and Dr. A. D. Kirwan. Standing are Dr. Aubrey Brown, Dr. Ralph Angelucci, Dr. Loren Carlson, Dr. William Matthews, Prof. William Tolman, James B. Allen, and Dr. Lyman Ginger. Absent were Dr. Thomas Clark, Floyd Wright and Robert Stephens.

THE OFFICIAL WATCH  
FOR THIS GAME



*The World's Most Honored Watch*

- \* Winner of 10 World's Fair Grand Prizes
- \* 28 World's Fair Gold Medals
- \* Highest Observatory Honors for Accuracy

*Premier Product of*

*Longines-Wittnauer*  
WATCH COMPANY

For Almost 100 Years, Maker of Watches  
of the Highest Character



Throughout the world, no other  
name on a watch means so much as

## LONGINES

The World's Most Honored Watch  
OFFICIAL WATCH

1960 OLYMPIC WINTER GAMES • 1959 PAN AMERICAN GAMES • 1960 U. S. OLYMPIC TRIALS • MAJOR NATIONAL AND WORLD CHAMPIONSHIPS IN ALL FIELDS BOTH HERE AND ABROAD

At Authorized

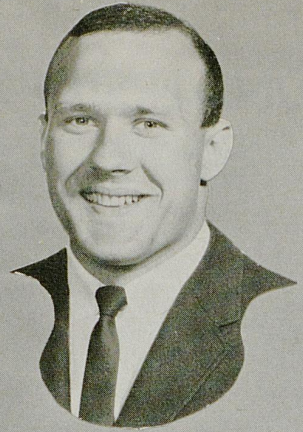
*Longines-Wittnauer*  
JEWELERS



HERSCHEL TURNER



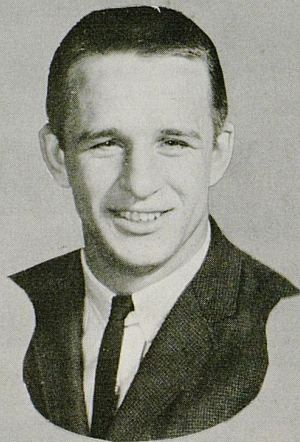
JIM MILES



TOM CHAPALA



HOWARD KEYES



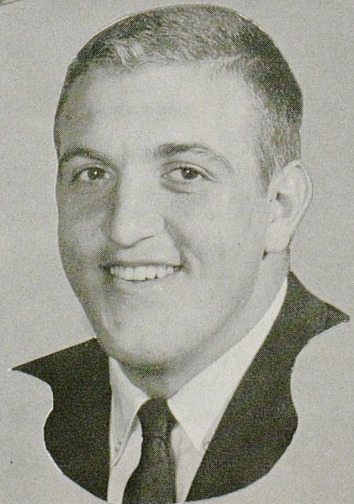
RICK NORTON



TOM BECHERER



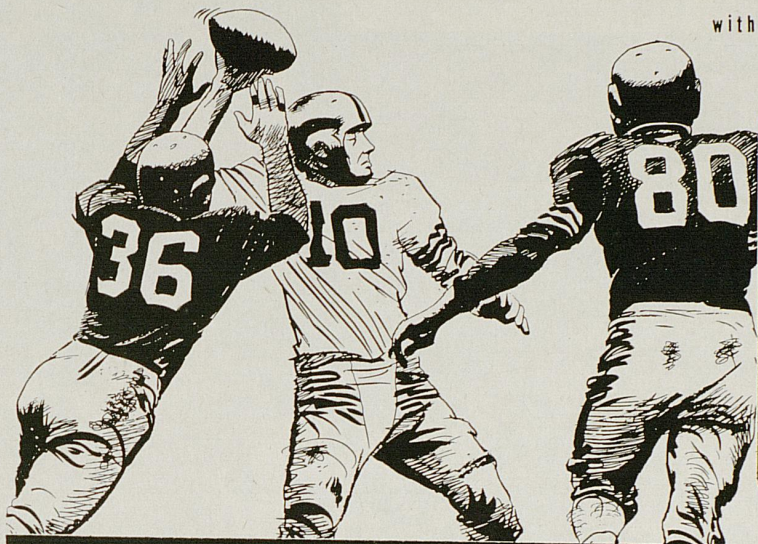
PHIL PICKETT



KEN BOCARD

FOLLOW **U** OF **K** ON THE STANDARD OIL NETWORK

with **CLAUDE SULLIVAN**



**1963  
SCHEDULE**

Sept. 21*	Va. Tech	Lexington
Sept. 28*	Mississippi	Lexington
Oct. 5	Auburn	Auburn
Oct. 12*	Detroit	Lexington
Oct. 19*	L.S.U.	Baton Rouge
Oct. 26†	Georgia	Lexington
Nov. 2	Miami (Fla.)	Lexington
Nov. 9	Vanderbilt	Nashville
Nov. 16	Baylor	Waco
Nov. 23	Tennessee	Lexington

\*Night Games †Homecoming

**STANDARD  
OIL  
NETWORK**

WINN, Louisville  
WLAP, Lexington  
WCMI, Ashland  
WKCT, Bowling Green

WHIR, Danville  
WFKY, Frankfort  
WIEL, Elizabethtown  
WHOP, Hopkinsville

WKYB, Paducah  
WFTM, Maysville  
WCTT, Corbin  
WKIC, Hazard

WOMI, Owensboro  
WPKE, Pikeville  
WMLF, Pineville  
WSFC, Somerset

**WINN**  
*every  
University of  
Kentucky  
game  
with  
Kentucky's  
Outstanding  
Sportscaster  
CLAUDE  
SULLIVAN*



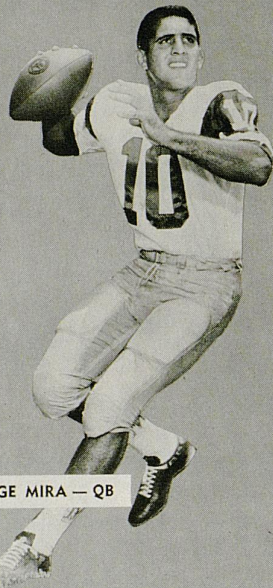
**WINN  
LOUISVILLE**  
*the Originating  
Station for*  
**ALL U. K.  
FOOTBALL**  
*on the*  
**STANDARD OIL  
FOOTBALL  
NETWORK**

**W W N N**  
CBS  
RADIO  
1240

# HURRICANES



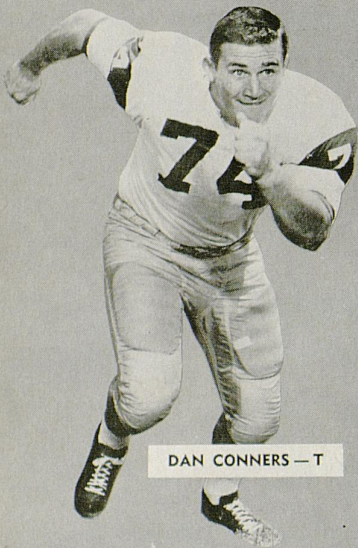
JACK SIMS — HB



GEORGE MIRA — QB



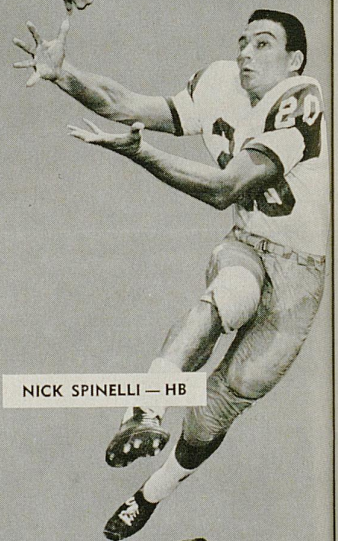
PETE BANASZAK — HB



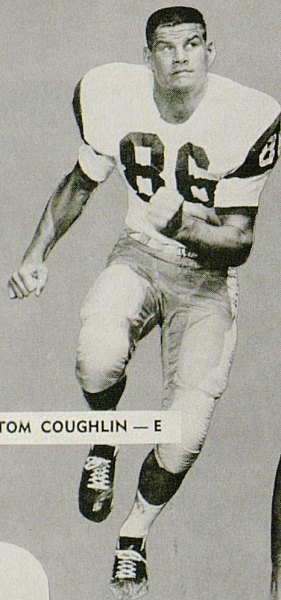
DAN CONNERS — T



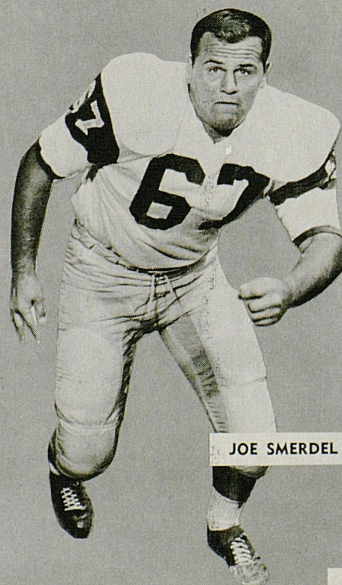
JOHN BENNETT — HB



NICK SPINELLI — HB



TOM COUGHLIN — E



JOE SMERDEL — G



LEO LILLIMAGI — C



BILL SPARKS — E



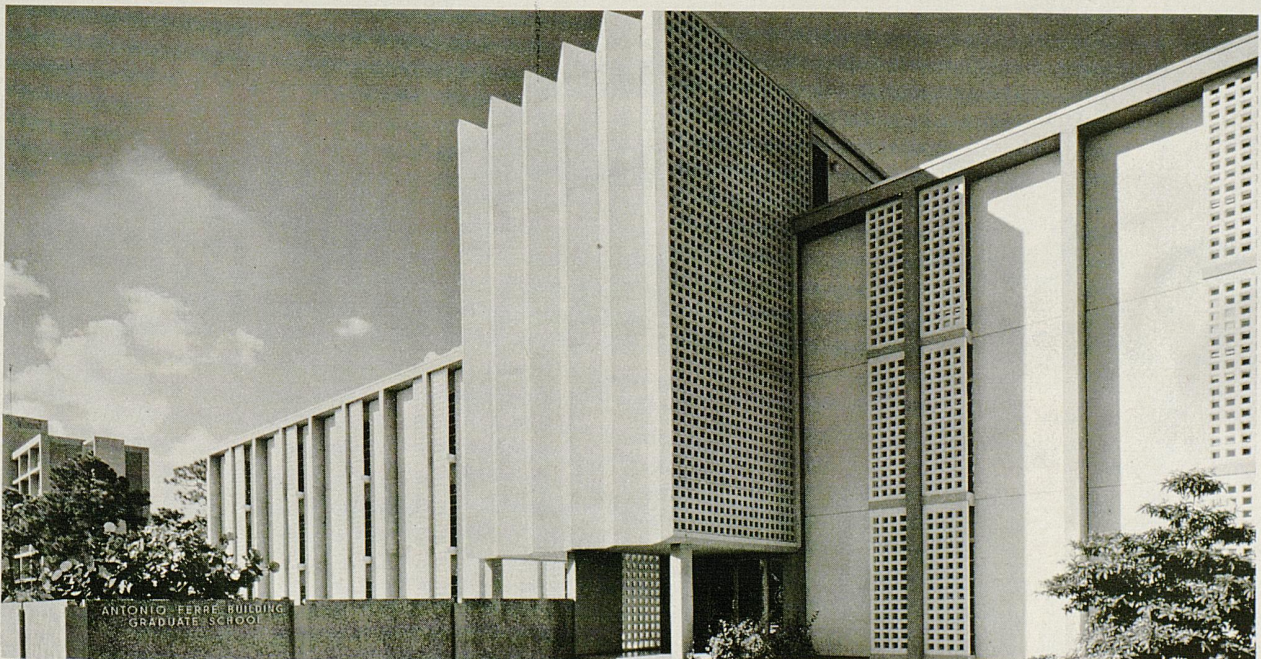
DR. HENRY KING STANFORD  
President

# *University of Miami*



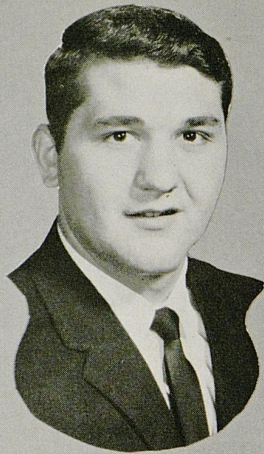
ANDY GUSTAFSON  
Head Coach

GRADUATE SCHOOL





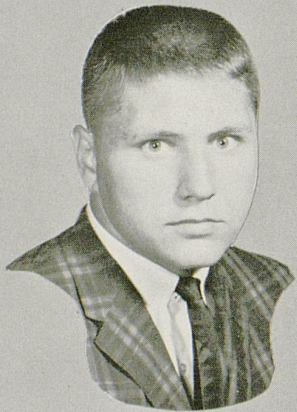
BILL JENKINS



TONY MANZONELLI



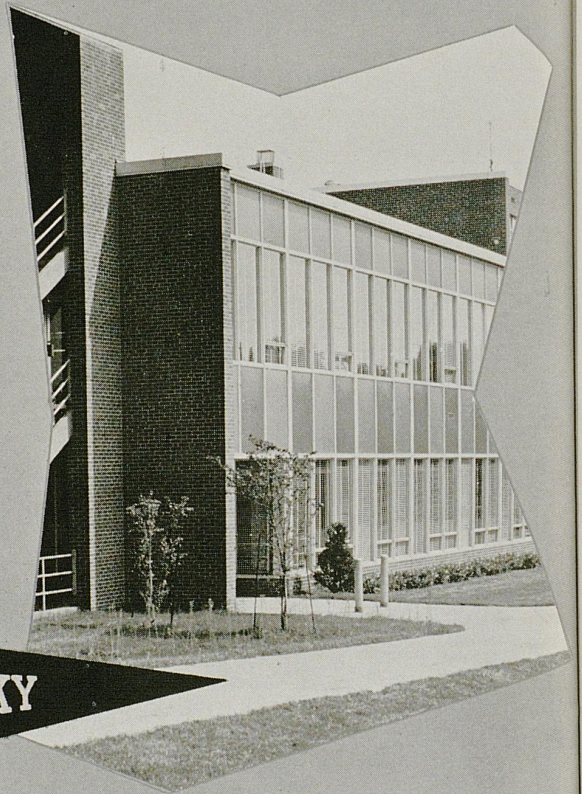
PERKY BRYANT



SAM BALL



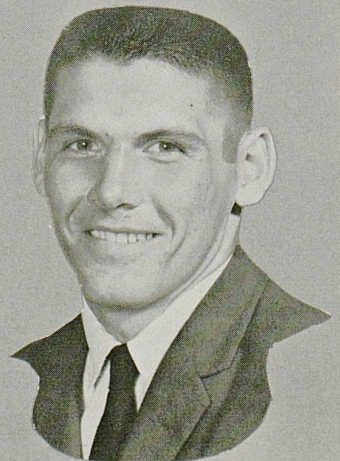
LLOYD CAUDILL



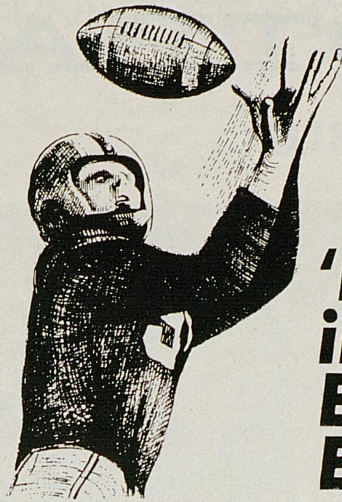
GERARD MURPHY



RICK KESTNER



BOB BROWN



**'H-A-S has the Best  
in Sports  
Every Season—  
Every Year!**

# **WHAS 840 RADIO SPORTS**



- **The entire U. of K. Football Schedule**  
Co-sponsored by Your Friendly  
Neighborhood FORD DEALER and EAST  
KENTUCKY Rural Electric Co-operative.

- **"Football Warm-up"**  
Ten minutes before game time, JERRY'S  
RESTAURANTS present Cawood Ledford  
with opponents' records, histories  
and rivalries.



- **S.E.C. Football**  
11 major Southeastern Conference games  
co-sponsored by SINCLAIR OIL COMPANY.

- **Thoroughbred Racing**  
The Feature Race of the day every day of  
the spring and fall meetings at Keeneland  
and Churchill Downs . . . including the  
Kentucky Derby.



- **U. of K. Basketball**  
Play-by-play of more than 70 college and  
high school games, including N.C.A.A.  
tournaments, the K.H.S.B.T. and every  
U. of K. game.

- **All Year—Daily Sports Programs**
  - 3:30 WHAS Sports
  - 5:15 Kentuckiana Sports
  - 6:40 ABC Sports
  - 10:15 Report on Sports

# U.K. FOOTBALL

Over WBLG

MARK HALLECK  
WBLG's Sports Director

Play-by-Play of  
All U.K. Games



BROADCASTS OF ALL U.K. GAMES PRESENTED BY



---

## U.K. BASKETBALL

EXCLUSIVE! Hear COACH RUPP  
from the playing floor following all games

---

The BEST in Central Kentucky

BEST Announcers • BEST Music • BEST Equipment • BEST Sports

the BLue Grass station • dial 1300

# W B L G

130 Barr St., Lexington, Kentucky 40507



## UNIVERSITY OF MIAMI ROSTER

No.	Name	Pos.	Class	Age	Ht.	Wt.	Home Town
10—	George Mira*	QB	Sr.	21	6-0	182	Key West, Fla.
11—	Gene Bebbler	QB	Soph.	19	5-11	170	Miami, Fla.
12—	Pat Ratesic	QB	Jr.	20	6-1	179	McKeesport, Pa.
15—	Fred Bertani	QB	Jr.	20	6-0	183	Irwin, Pa.
16—	Paul Seago	QB	Soph.	19	5-11	177	Jacksonville, Fla.
20—	Nick Spinelli*	FB	Sr.	21	5-11	183	Corapolis, Pa.
21—	Jack Sims*	FB	Jr.	20	5-10	180	Hollywood, Fla.
22—	Harvey Foster*	E	Sr.	21	6-1	195	Palatine, Ill.
24—	Art Zachary	FB	Soph.	19	6-5	202	Garfield Heights, O.
25—	Barry Queer	HB-FB	Soph.	18	6-0	188	Norvelt, Pa.
26—	Don Curtright	HB	Soph.	19	6-0	181	No. Chicago, Ill.
30—	John Bahen	FB	Sr.	22	6-1	189	Frostburg, Md.
33—	John Wilber	HB	Soph.	20	6-0	190	Port Clinton, O.
35—	John Bennett*	HB	Sr.	22	6-2	212	Clifton Heights, Pa.
36—	Charles Brown	HB	Soph.	18	6-1	177	Waukegan, Ill.
40—	Pete Banaszak	HB	Soph.	19	6-0	203	Crivitz, Wis.
41—	Robert Barth	HB	Soph.	20	6-1	191	Rocky River, O.
43—	James Hess	HB	Soph.	19	5-11	190	Clifton Heights, O.
44—	John Sisk*	HB	Sr.	21	6-2	183	Wauwatosa, Wis.
45—	Rick Abrams	HB	Soph.	19	5-11	188	Weirton, W. Va.
50—	John Matlock	C	Soph.	19	6-4	212	Cleveland, Ohio
51—	Norm Blanchard	C	Jr.	20	6-1	215	Weirton, W. Va.
52—	Leo Lillimagi	C	Sr.	22	6-0	212	Highland, N. Y.
53—	Robert Hart*	C	Sr.	20	6-0	193	Munster, Ind.
58—	John Nock	G	Soph.	19	6-2	191	Greensburg, Pa.
61—	Bruce Brinkos*	G	Jr.	21	5-9	210	McKeesport, Pa.
63—	Bernard Yaffa	T	Soph.	19	6-0	225	Pennsauken, N. J.
64—	Frank Beck	G	Soph.	19	6-2	208	McKeesport, Pa.
65—	Ed Kraszewski	G	Soph.	19	6-3	210	Camden, N. J.
67—	Joe Smerdel*	G	Sr.	21	6-1	229	Pittsburgh, Pa.
68—	James Stephens	T	Soph.	19	6-3	212	Somerset, Pa.
69—	David Green	T	Jr.	19	6-3	219	Scottsdale, Pa.
70—	John Andreadis	T	Soph.	19	6-3	230	Canton, Ohio
71—	Bud Savini*	G	Sr.	22	6-0	245	Greensburg, Pa.
73—	Rowland Benson*	G	Sr.	23	6-3	255	Miami, Fla.
74—	Dan Conners*	T	Sr.	21	6-2	238	St. Marys, Pa.
75—	Harry Fersch*	T	Jr.	20	6-2	227	Miami, Fla.
76—	Robert Brown	T	Jr.	20	6-2	227	Pittsburgh, Pa.
80—	Ed Weisacosky	E	Soph.	19	6-1	201	Pottsville, Pa.
81—	Fred Brown	E	Jr.	20	6-5	218	Sacramento, Calif.
82—	Robert Werl*	E	Jr.	20	6-3	212	Pittsburgh, Pa.
84—	Fred Hubbs	E	Jr.	21	6-2	201	San Diego, Calif.
85—	Dennis Montanti	G	Soph.	19	6-2	205	Glassport, Pa.
86—	Tom Coughlin	E	Soph.	19	6-4	203	Lakewood, Ohio
87—	Hoyt Sparks*	E	Sr.	21	6-1	211	Miami, Fla.
88—	Frank Felicione	E	Jr.	20	6-1	187	Tampa, Fla.
89—	Don Cifra	E	Jr.	20	6-2	205	Turtle Creek, Pa.

\* Returning lettermen.

*Come see us in our new location in the*

STUDENT CENTER

# University Book Store

(Formerly Campus Book Store)

**Many New Items Now In Stock**

★ UK Glassware

★ UK Sweatshirts

★ UK Pennants

**OPEN AFTER DAY GAMES UNTIL 6 P.M.**

# *DeBoor*

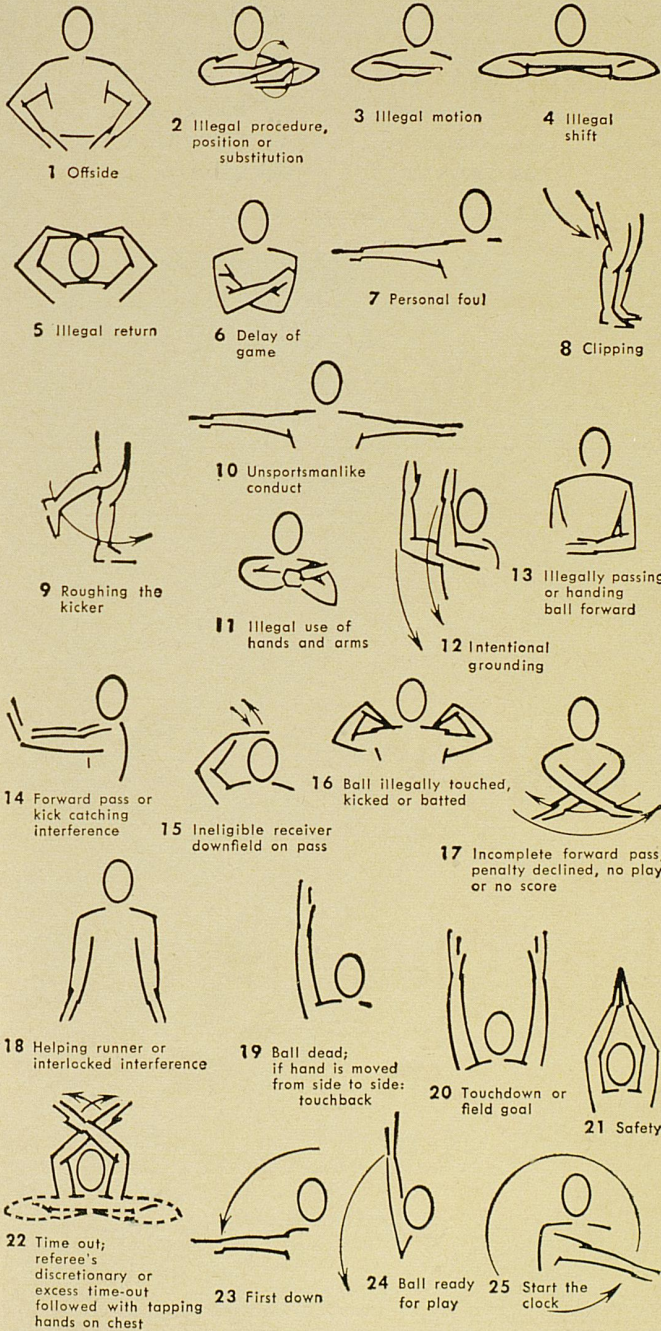
Laundry

Dry Cleaning

Storage

# Pause for Coke

TRADE-MARK®



COCA-COLA BOTTLING WORKS OF LEXINGTON, KENTUCKY

## MIAMI

### PROBABLE STARTING LINEUP

No.	Name	Position
82	ROBERT WERL	LE
74	DAN CONNERS	LT
73	ROWLAND BENSON	LG
53	ROBERT HART	C
65	ED KRASZEWSKI	RG
76	ROBERT BROWN	RT
80	ED WEISACOSKY	RE
10	GEORGE MIRA	QB
35	JOHN BENNETT	LH
40	PETE BANASZAK	RH
20	NICK SPINELLI	FB

OFFICIALS — Referee: Charles Bowen

## THE HURRICANE SQUAD

10	Mira, QB	40	Banaszak, HB	69	Green, T
11	Bebber, QB	41	Barth, HB	70	Andreadis, T
12	Ratesic, QB	43	Hess, HB	71	Savini, G
15	Bertani, QB	44	Sisk, HB	73	Benson, G
16	Seago, QB	45	Abrams, HB	74	Connors, T
20	Spinelli, FB	50	Matlock, C	75	Fersch, T
21	Sims, FB	51	Blanchard, C	76	R. Brown, T
22	Foster, E	52	Lillimagi, C	80	Weisacosky, E
24	Zachary, FB	53	Hart, C	81	F. Brown, E
25	Queer, HB-FB	58	Nock, G	82	Werl, E
26	Curtright, HB	61	Brinkos, G	84	Hubbs, E
30	Bahen, FB	63	Yaffa, T	85	Montanti, G
33	Wilbur, HB	64	Beck, G	86	Coughlin, E
35	Bennett, HB	65	Kraszewski, G	87	Sparks, E
36	C. Brown, HB	67	Smerdel, G	88	Felicione, E
		68	Stephens, T	89	Cifra, E

Umpire: Harvey Hardy

Linesman: George Morris

# Viceroy's got

SMOKE ALL 7



Smoke all 7 filter brands and you'll agree: some taste as if they had no filter at all... others filter the fun and flavor out of smoking. But Viceroy tastes the way you'd like a filter cigarette to taste!

## KENTUCKY

### PROBABLE STARTING LINEUP

No.	Name	Position
80	RICK KESTNER . . . . .	LE
74	RICH TUCCI . . . . .	LT
64	JIM FOLEY . . . . .	LG
53	CLYDE RICHARDSON . . . .	C
68	GERARD MURPHY . . . . .	RG
70	HERSCHEL TURNER . . . .	RT
81	BILL JENKINS . . . . .	RE
17	RICK NORTON . . . . .	QB
21	RODGER BIRD . . . . .	LH
22	DARRELL COX . . . . .	RH
44	KEN BOCARD . . . . .	FB

11	Becherer, QB
15	Todd, QB
16	Thompson, QB
17	Norton, QB
21	Bird, HB
22	Cox, HB
25	Kosid, HB
28	Pickett, HB
32	Ashworth, HB
42	Bolling, FB
43	Bryant, FB
44	Bocard, FB

## THE WILDCAT SQUAD

51	Brockardt, C	73	Ball, T
53	Richardson, C	74	Tucci, T
56	Miles, C	76	Caudill, T
61	Dunn, G	77	Chapala, T
62	Semary, G	78	Mullins, T
64	Foley, G	80	Kestner, E
65	Manzonelli, G	81	Jenkins, E
66	Brown, G	82	Cardwell, E
67	Schornick, G	83	Komara, E
68	Murphy, G	84	Andrighetti, E
70	Turner, T	85	Duncan, E
71	Davis, T	87	Stanko, E
72	Smith, T		

OFFICIALS — Field Judge: Jack Bradford

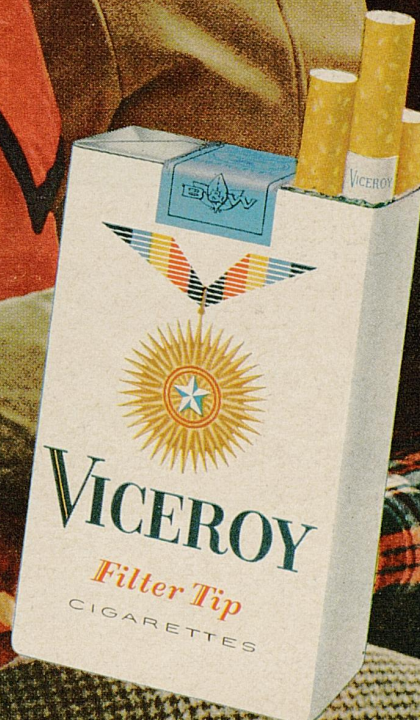
Back Judge: Paul Hicks

ECO: Dick McNabb

the taste that's right!

not too strong...not too light...

Viceroy's got—the taste that's right!



© 1963, Brown & Williamson Tobacco Corporation

things go  
better  
with  
**Coke**

TRADE-MARK ®



1. OFFSIDE by either team; Violation of scrimmage or free kick formation; Encroachment on neutral zone — Loss of 5 Yards.  
2. ILLEGAL PROCEDURE, POSITION OR SUBSTITUTION — Putting ball in play before Referee signals "Ready-for-Play"; Failure to complete substitution before play starts; Player out-of-bounds when scrimmage begins; Failure to maintain proper alignment of offensive team when ball is snapped; False start or simulating start of a play; Taking more than two steps after Fair Catch is made; Player on line receiving snap; Free kick out-of-bounds — Loss of Five Yards.

### **PENALTIES**

3. ILLEGAL MOTION — Offensive player illegally in motion when ball is snapped—Loss of Five Yards.  
4. ILLEGAL SHIFT — Failure to stop one full second following shift — Loss of Five Yards.  
5. ILLEGAL RETURN of ineligible substitute — Loss of 15 Yards.  
6. DELAY OF GAME—Consuming more than 25 seconds in putting the ball in play after it is declared ready-for-play; Interrupting the 25-second count for any reason other than a free or excess time out granted by Referee; Failure to remove injured player for whom excess time out was granted; Crawling —Loss of Five Yards. Team not ready to play at start of either half—Loss of 15 Yards.  
7. PERSONAL FOUL—Tackling or blocking defensive player who has made Fair Catch; Piling on; Hurdling; Grasping face mask of opponent; Tackling player out of bounds, or running into player obviously out of play; Striking an opponent with fist, forearm, elbow or locked hands; Kicking or kneeling—Loss of 15 Yards.

8. CLIPPING—Loss of 15 Yards.  
9. ROUGHING THE KICKER or holder—Loss of 15 Yards.  
10. UNSPORTSMANLIKE CONDUCT—Violation of rules during intermission; Illegal return of suspended player; Coaching from side lines; Invalid signal for Fair Catch; Persons illegally on field — Loss of 15 Yards.  
11. ILLEGAL USE OF HANDS AND ARMS by offensive or defensive player — Loss of 15 Yards.  
12. INTENTIONAL GROUNDING of forward pass—Loss of Five Yards from spot of pass Plus Loss of Down.  
13. ILLEGALLY PASSING OR HANDING BALL FORWARD — Loss of Five Yards from spot of foul Plus Loss of Down.  
14. FORWARD PASS OR KICK CATCHING INTERFERENCE — Interference with opportunity of player of receiving team to catch a kick—Loss of 15 Yards. Interference by member of offensive team with defensive player making pass interception — Loss of 15 Yards Plus Loss of Down. Interference by defensive team on forward pass —Passing Team's Ball at Spot of Foul and First Down.  
15. INELIGIBLE RECEIVER DOWNFIELD ON PASS — Loss of 15 Yards.  
16. BALL ILLEGALLY TOUCHED, KICKED OR BATTED—Forward pass being touched by ineligible receiver beyond the line of scrimmage—Loss of 15 Yards from Spot of Preceding Down and Loss of a Down. Eligible pass receiver going out-of-bounds and later touching a forward pass—Loss of Down; Illegally kicking the ball —Loss of 15 Yards.  
17. INCOMPLETE FORWARD PASS — Penalty declined; No play or no score.  
18. HELPING THE RUNNER, or interlocked interference — Loss of 15 Yards.

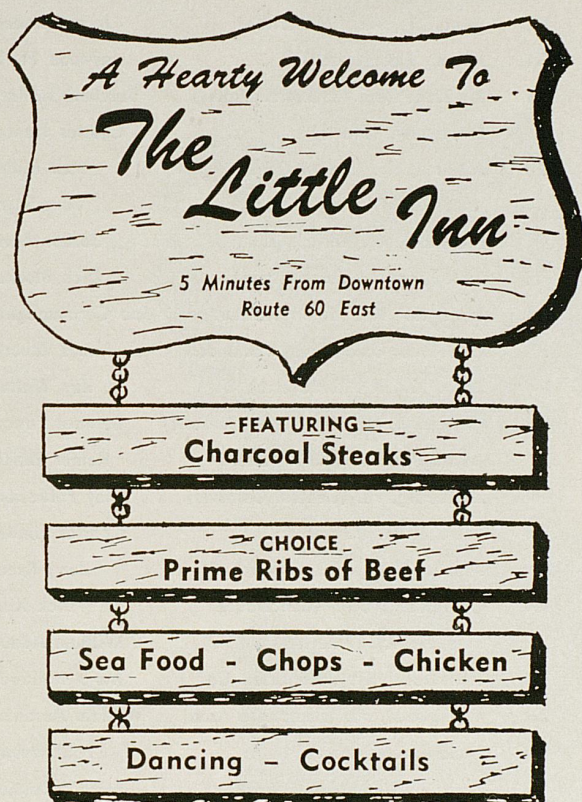
COCA-COLA BOTTLING WORKS OF LEXINGTON, KENTUCKY

*If You Like Fine Quality—If You Love Big Saving*

YOU GET BOTH — DAY IN, DAY OUT AT

# **BEN SNYDER'S DEPT. STORE**

OPEN A BEN SNYDER CHARGE ACCOUNT — PAY IN 10 MONTHS

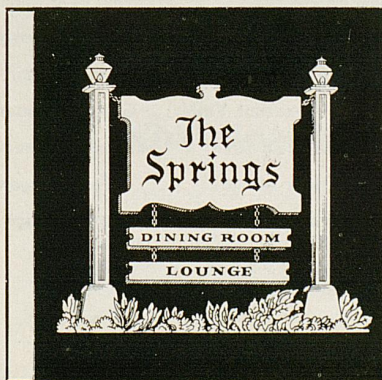


## **Dixie Bell Dairy Company**

**"The Largest and Only Locally  
Owned Dairy Serving  
Central Kentucky"**



**315 North Limestone Street  
LEXINGTON, KY.**



## **Springs Motel**

2020 South Broadway PHONE 277-5751 Lexington, Kentucky

ENJOY COCKTAILS IN THE RESTFUL  
"NEPTUNE LOUNGE"

DINE IN THE ELEGANT SETTING OF  
"THE POMPEI ROOM"

Entertainment nightly—9:00-1:00 Cocktail hour—4:00-6:00

# UNIVERSITY OF KENTUCKY ROSTER

No.	Name	Pos.	Class	Age	Ht.	Wt.	Ltrs.	Home Town and High School	High School Coach
11	Tom Becherer	QB	Soph.	19	5-10	162	FN	Canton, Ohio (Central Catholic)	John McVay
15	Talbott Todd	QB	Soph.	19	6-1	190	FN	Richmond, Ky. (Madison)	Roy Kidd
16	Gordon Thompson	QB	Soph.	19	5-11	176	FN	Fern Creek, Ky. (Fern Creek)	Earl Browning
17	Rick Norton	QB	Soph.	19	6-1	187	FN	Louisville, Ky. (Flaget)	Paul Miller
21	Rodger Bird	HB	Soph.	20	5-11	184	FN	Corbin, Ky. (Corbin)	Carl Oakley
22	Darrell Cox	HB	Sr.	22	5-7	163	2	Miami, Fla. (Edison)	Haywood Fowle
25	Bob Kosid	HB	Sr.	21	5-10	187	1	Glenview, Ill. (Gleenbrook)	Walt Sherman
28	Phil Pickett	HB	Jr.	20	5-10	173	1	Huntsville, Ala. (Huntsville)	Jerry Lambert
32	Bob Ashworth	HB	Soph.	20	6-2	169	FN	Miami, Fla. (Edison)	Haywood Fowle
42	Jim Bolling	FB	Soph.	19	5-11	187	FN	Big Stone Gap, Va. (Powell Valley)	Burchell Stallard
43	Perky Bryant	FB	Sr.	21	5-9	190	2	Evarts, Ky. (Evarts)	Charles Hunter
44	Ken Bocard	FB	Sr.	21	5-11	197	2	Ashland, Ky. (Ashland)	Rex Miller
51	Frank Brockardt	C	Soph.	19	6-3	193	FN	Wheeling, W. Va. (Triadelphia)	Dave Sayre
53	Clyde Richardson	C	Jr.	20	6-1	203	1	Frankfort, Ky. (MMI)	Gordon Betts
56	Jim Miles	C	Soph.	19	6-0	191	FN	Finley, Ky. (St. Joseph Prep)	Dick Blocker
61	Jack Dunn	G	Soph.	19	5-11	190	FN	Lexington, Ky. (Bryan Station)	Bob Cocconaugher
62	Vince Semary	G	Sr.	23	5-10	190	1	Cleveland, Ohio (West Technical)	James Roberts
64	Jim Foley	G	Jr.	20	5-11	189	1	Lexington, Ky. (Lafayette)	Ray Walton
65	Tony Manzonelli	G	Soph.	18	6-0	216	FN	Pittsburgh, Pa. (South Hill Catholic)	Bernard Powers
66	Bob Brown	G	Jr.	20	5-11	189	1	Darlington, Pa. (Northwestern)	Homer Shadle
67	John Schornick	G	Soph.	19	6-0	202	FN	Ebensburg, Pa. (Central Cambria)	Ray Pelliccioni
68	Gerard Murphy	G	Soph.	18	5-11	193	FN	Latrobe, Pa. (Latrobe)	Charles Findley
70	Herschel Turner	T	Sr.	21	6-3	226	2	Alexandria, Ky. (Campbell Co.)	Jerry Reece
71	Doug Davis	T	Soph.	19	6-4	232	FN	Centerburg, Ohio (Centerburg)	Dick King
72	Ed Smith	T	Soph.	19	6-2	196	FN	Pineville, Ky. (Pineville)	William Adams
73	Sam Ball	T	Soph.	19	6-4	219	FN	Henderson, Ky. (Henderson Co.)	Mojo Hollowell
74	Rich Tucci	T	Soph.	18	6-1	229	FN	Youngwood, Pa. (Hempfield Area)	William Abraham
76	Lloyd Caudill	T	Soph.	18	6-0	215	FN	Hazard, Ky. (Hazard)	Paul Wright
77	Tom Chapala	T	Jr.	20	5-11	201	*	Ambridge, Pa. (Ambridge)	Mike Sebastian
78	Basil Mullins	T	Soph.	19	6-4	201	FN	Paintsville, Ky. (Paintsville)	Walter Brugh
80	Rick Kestner	E	Soph.	18	6-1	197	FN	Stone, Ky. (Belfry)	Al Vipperman
81	Bill Jenkins	E	Jr.	20	6-2	205	1	Elizabethtown, Ky. (Elizabethtown)	Bill Hagg
82	Denny Cardwell	E	Jr.	21	6-1	188	1	Louisville, Ky. (Trinity)	Charles Quire
83	Jim Komara	E	Jr.	21	6-0	180	1	Conneautville, Pa. (Conneaut Valley)	George Komara
84	John Andrighetti	E	Soph.	20	6-0	192	FN	Grapeville, Pa. (Hempfield Area)	William Abraham
85	Bob Duncan	E	Soph.	19	6-1	196	FN	Strongstown, Pa. (Penns Manor)	Pat Corrigan
87	Ed Stanko	E	Soph.	19	6-1	192	FN	McKeesport, Pa. (McKeesport)	Harold Weigle

\* Transfer from Michigan

FN—Freshman Numeral





Penny Edwards—"MISS TIPARILLO."

## What does she mean "cigars...cigarettes...Tiparillos"?

You'll be hearing that chant more and more—now that Tiparillos have arrived. And arrived they have. In all the right places. With all the right people.

The new Tiparillo has a neat, trim shape. It looks young and debonair. And its pearly, pliable tip pays more than lip service to your smoking pleasure.

And never before such mildness! The most careful blending of choicest imported tobaccos has seen to that. So, too, has the exclusive, veinless Ultra Cigar Wrapper\* that burns so evenly and smoothly it insures complete mildness.

You can even see the mildness. The

surprisingly whiter ash is visible evidence. Smoker's proof. Here is flavor you don't have to inhale to enjoy.

"Cigars . . . cigarettes . . . ?" Who knows, maybe someday it will be just "Tiparillos!"

Why don't you ask for one today?

\*T.M. GENERAL CIGAR CO.

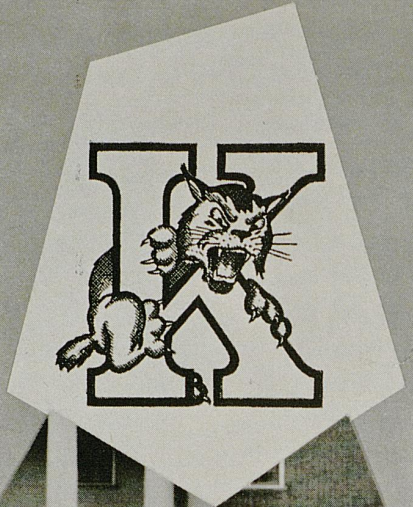
**Tiparillos are on sale at this stadium.**



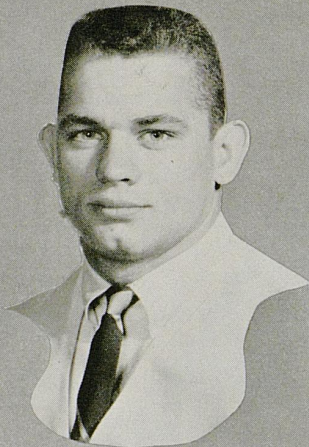
DENNY CARDWELL



ED STANKO



BASIL MULLINS



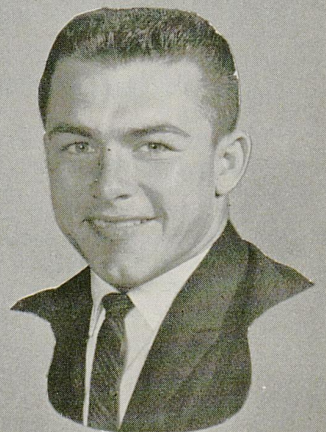
RODGER BIRD



GORDON THOMPSON



JACK DUNN



DARRELL COX

ENJOY THE GAME MORE!

Treat yourself to **m&m's** Candies



ON SALE AT THIS STADIUM NOW!

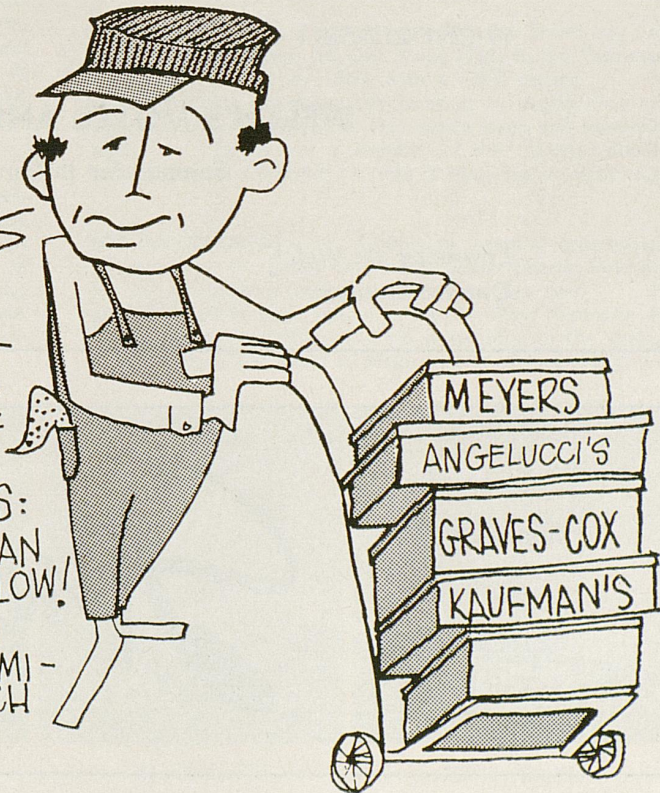
CONGRATULATIONS SIR!

DID YOU KNOW THAT YOU & THE MEN YOU SEE AROUND YOU ARE AMONG THE BEST DRESSED MEN IN THIS WHOLE U.S.A.?

IT'S A FACT! HERETOFORE, THOSE FAST HORSES & BEAUTIFUL WOMEN HAVE STOLEN THE SHOW, BUT MAYBE THEY ARE THE STRIKING PROOF OF WHAT OUR MANUFACTURERS TELL US:

THE BLUE GRASS GENTLEMAN IS A MOST DISCRIMINATING FELLOW!

AND WE FEEL HONORED TO HAVE DRESSED SO MANY DISCRIMINATING GENTLEMEN FOR SUCH A LONG WHILE.



## Preview of Coming Attractions . . . .

### KENTUCKY vs. TENNESSEE

Playing Three Weeks From Today On Stoll Field

#### FACTS ABOUT THE VOLUNTEERS

**Coach**—Jim McDonald (First Year As Head Coach)

**1962 Record**—Won 4, Lost 6

**Last Year's Score**—Tennessee 10, Kentucky 12

**Chief Losses**—FB George Canale, T Tom Williams, T Kenny Brown, E Pat Augustine, T Paul Tilson, BB Wayne Coleman, Center L. T. Helton

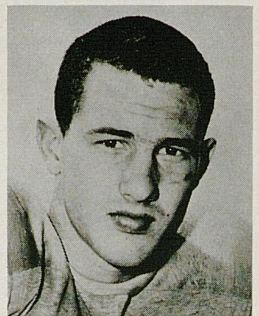
**Top Returnees**—TB Mallon Faircloth, G Steve DeLong, T Dick Evey, E Buddy Fisher

**Sophs to Watch**—Hal Wantland, TB; Stan Mitchell, FB; Frank Emanuel, C; Mike Reynolds, BB; Bob Petrella, WB; Bill Tomlinson, WB

**Outlook**—A new coach and a new offense at Tennessee are enough reasons to observe caution when dealing with the Vols. If this is not enough, add Mr. Mallon Faircloth—one of the best running backs in the league—and a top-notch guard operative named Steve DeLong, voted probably the best defensive lineman in the SEC, and you really have your hands full. Defense, particularly against passing, looms as one of the big problems inherited by McDonald. However, the Vol backfield should be stronger with depth and young new talent available. Tennessee has had its troubles this season but the record book can be tossed aside for the 59th time in the long and colorful series.



JIM McDONALD



MALLON FAIRCLOTH

PHONE 277-5211

10 MOTEL UNITS

### WELCH'S MOTEL AND RESTAURANT

Famous for Italian Spaghetti

Lawrence W. Welch  
Owner-Manager

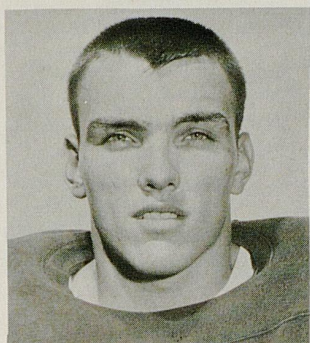
1915 Nicholasville Road  
Lexington, Kentucky

Open  
Mondays  
and  
Fridays  
'Til 9

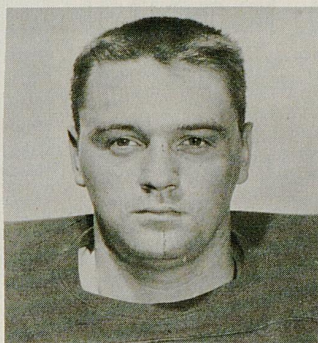
*Stewart's*

Phone or Write  
Sally Stewart  
Personal Shopper  
252-2210

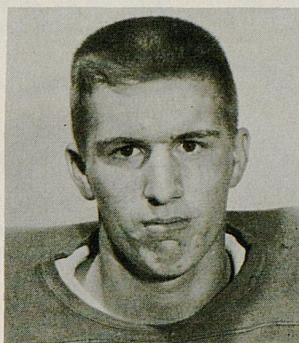
## MEET THE "KITTENS" . . . . .



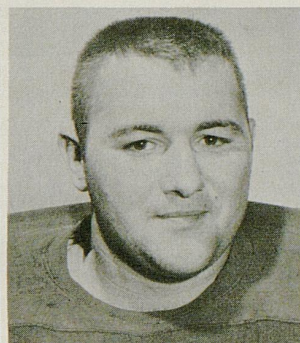
PORTER



SAMO



SEIPLE



SERGEANT

**JOHN PORTER**—A native of Paintsville, Ky., Porter averaged 5.1 yards per carry in his three years of varsity football . . . In addition, he tallied 15 touchdowns and booted 23 extra points . . . As a linebacker he received Honorable Mention All-America during his senior campaign . . . Besides his five varsity letters in football, he also lettered three times in track, and four in baseball.

**MIKE SAMO**—Averaging eight individual tackles per game in his last two seasons at Bishop McCort High School, Mike gained Honorable Mention All-State in the tough Pennsylvania Catholic League . . . A rugged interior lineman, he has gained the praise of the UK coaching staff for his consistently good performances.

**LARRY SEIPLE**—As a starting right halfback in the Kittens' 28-14 opening win over the Vandy Frosh, Larry drew the praise of Freshmen Coach Jim Carmody for his all-around outstanding work . . . Playing for William Allen High in Allentown, Pa., he scored 14 touchdowns in his senior year . . . He is enrolled in the College of Education, majoring in physical education.

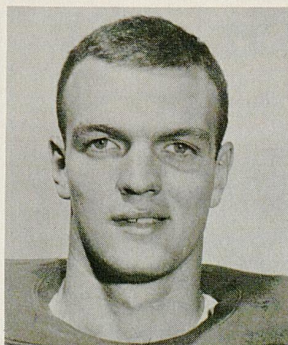
**RICK SERGEANT**—A local product of Lafayette High School, Sergeant stands 6-2 and weighs 270 pounds to rank as the biggest Kitten . . . Anchoring the line at tackle, he played a big role in the Generals' 1960 undefeated record . . . In addition to being an All-Stater on the gridiron, he was also a track standout in the shot put . . . Sergeant plans to major in personnel management . . . Rick came out for the team on his own and has proven himself a capable gridder.

**ED SETTLE**—Operating at end and halfback, Settle played his high school football at Caldwell County . . . His impressive pass catches enabled the Tigers to rack up a 9-2 slate in his senior year . . . They were also the Western Kentucky Champions in 1962 . . . He is majoring in electrical engineering.

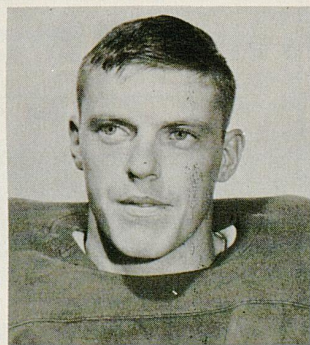
**WESLEY SIMPSON**—A brother of former Wildcat defensive ace Tommy Simpson, Wesley came to UK after winning five varsity letters in the gridiron sport as a prep star . . . An end for Lebanon (Ky.) High School, he has since been switched to guard . . . He plans to major in agriculture or engineering . . . He chose UK because "I want to play football and try to do as well as Tommy did."

**DAVID SMITH**—As a speedy halfback, this Smith boy (one of three on the team) led Oak Ridge High to the Tennessee state championship in 1962 with a 10-0 record . . . He gained All-East Tennessee selections as an outstanding tailback . . . Also a regular on the varsity track and swimming teams . . . Smith was a member of the regional doubles tennis team in 1962-63 . . . He is majoring in metallurgy.

**JOE DAVID SMITH**—As the Kittens' starting quarterback, he has drawn the praise of Wildcat Coach Charlie Bradshaw for his outstanding leadership ability on the field . . . He guided Mayfield High School to the All-West Kentucky AA Championship in 1961 . . . He is enrolled in the College of Agriculture and plans to major in animal husbandry.



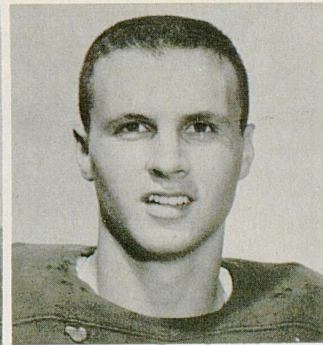
SETTLE



SIMPSON



DAVID SMITH



JOE D. SMITH



BUSTER BROWN  
Equipment Manager



KEN KUHN  
Publicity Director

# "Backing the Wildcats"



JOHN (RUSTY) PAYNE  
Trainer



HARVEY HODGES  
Ticket Manager



*Borden's*  
ICE CREAM  
Now in  
Central Kentucky



576 E. Third St. — Phone 254-2855

You're Always Welcome At . . .



WALGREEN AGENCY DRUG STORES

IN LEXINGTON

- ★ 69 Eastland Shopping Center
- ★ 1198 North Limestone
- ★ 878 East High Street
- ★ 404 Southland Drive

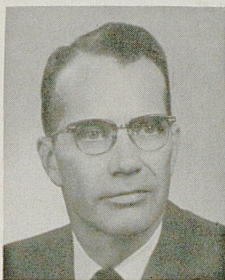
SERVING THE BEST  
IN  
DRUG STORE NEEDS  
SINCE 1921

15 DRUG STORES IN KENTUCKY

# Second National Bank & Trust Co.

123 Cheapside, Lexington, Ky.

REMEMBER: *Safety Is Our Inherent Way,  
Saving Is Your Touchdown Play.*



MILLER WELCH



CHARLES LEAR

## CARPENTER-WARREN

INSURANCE AGENCY

Since 1927

137 N. Upper St. PHONE 2-4155 Lexington, Ky.

ALL FORMS  
OF INSURANCE



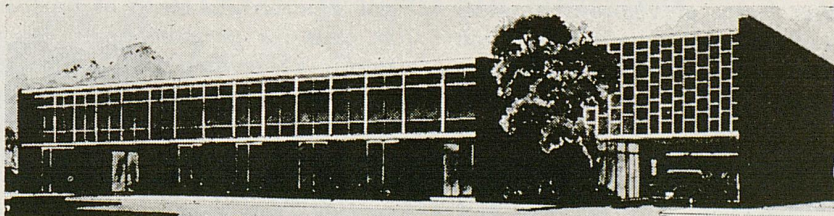
DONALD ROSE



TINDER  
KRAUSS  
TINDER



## The Downtowner Motor Hotel



LEXINGTON'S FINEST — 155 ROOMS — RESTAURANT — COCKTAIL LOUNGE — CONFERENCE ROOMS  
PARK AT YOUR FRONT DOOR — TV — HI-FI — RADIO — PHONES — SWIMMING POOL

347 EAST MAIN — JUST EAST OF ROSE



## “Educational Value of Physical Fitness”

by JUSTICE BYRON R. WHITE

of a strong and immediate challenge. Games resemble life in capsule form, and the participant quickly learns that his performance depends upon the development of strength, stamina, self-discipline and a sure and steady judgment.

Unfortunately, our educational system does not expose all boys and girls to such experiences. Many youngsters have little opportunity to develop strong, efficient bodies, or to engage in activities which would help them to discover and develop the resources of physical, mental and moral strength which lie hidden in all of us. In many school sports and physical activity programs, the best facilities, topflight instruction and enthusiastic public support are reserved for those who need them least—the skilled athletes.

The result has been a steady decline in the physical fitness of all but our most athletic children. When 200,000 pupils in five states were given physical fitness tests in 1961, nearly one-third of them failed to meet minimum standards for strength, agility and flexibility. In a recent comparison of fitness tests results from Japan, Nationalist China, Okinawa and the United States, American boys and girls ranked last in strength and endurance.

This situation constitutes a serious threat to the continued growth and freedom of America. A nation is merely the sum of all its citizens, and its strength, vigor and vitality can be no greater than ours. Fortunately, there is a way to solve this problem. Through the efforts of the President and his Council on Physical Fitness, a program has been developed which already is improving the health and physical fitness of many of our children. I strongly urge you to see that your school offers such a program.

The program has the support of 19 leading medical and educational organizations, and it is not expensive in terms of time, money or staff. It calls for periodic health appraisals for all pupils, a screening process for identifying physically underdeveloped children, at least 15 minutes of vigorous physical activity each day for all boys and girls, and regular achievement tests to measure progress and to provide incentive. You, your schools and your community can afford such a program, and your youngsters and your country cannot afford to be without it.

**F**rom my first high school game for Wellington, Colorado, more than 30 years ago to my final game with the Detroit Lions in 1941, football played an important role in my life. It was responsible for much that I enjoyed and did at the University of Colorado, and it enabled me to get an education in law at Yale. I have more reason than most people to love the game and to appreciate its values.

Because of this, I am always disappointed when people express surprise when they find former football players occupying responsible positions in public life. They seem to think it incongruous that a person once noted primarily for his ability on the playing field should later aspire to a significant role in real life. I am sure this thinking arises out of serious misapprehension.

Sports and other forms of vigorous physical activity provide educational experiences which cannot be duplicated in the classroom. They are an uncompromising laboratory in which we must think and act quickly and efficiently under pressure, and they force us to meet our own inadequacies face to face—and to do something about them—as nothing else does.

In any athletic activity, we are thrown upon our own resources to succeed or fail in the face



R

"No Order Too Small"

R

# Sageser Drugs

R

"Ask Your Doctor"

R

## A sure winner for convenient banking

Lexington's Only Downtown

Drive-In Banking Windows

FREE PARKING



DRIVE-IN OPEN FROM 7:30 TIL 6:00 DAILY TIL NOON ON SATURDAY

# Central

**BANK & TRUST CO.**

SHORT AND UPPER STREETS LEXINGTON, KENTUCKY



### YOU Should be wearing

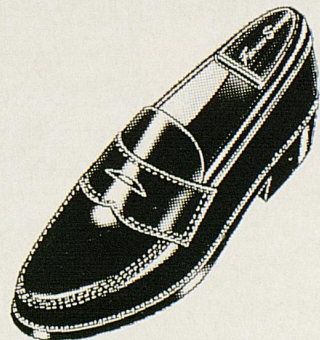
French  
Shruener

MEN'S  
Extra Quality  
SHOES

Standouts for Comfort and Style

## BAYNHAM'S

"Men's Shoes of Distinction" . . . 135 East Main Street



## WHAT KENTUCKY OPPONENTS ARE DOING

<b>VIRGINIA TECH (5-1)</b> 14 Kentucky (A) 33 27 Wake Forest (A) 0 10 Virginia (N) 0 22 Geo. Wash (A) 8 28 Wm. & Mary (H) 13 31 Florida St. (A) 23 11/2 Richmond (A) 11/9 N. C. State (A) 11/16 W. Virginia (A) 11/28 VMI (N)	<b>MISSISSIPPI (4-0-1)</b> 0 Memphis State (A) 0 31 Kentucky (A) 7 20 Houston (A) 6 21 Tulane (A) 0 27 Vanderbilt (H) 7 11/2 L.S.U. (A) 11/9 Tampa (H) 11/16 Tennessee (N) 11/30 Miss. State (A)	<b>AUBURN (5-0)</b> 21 Houston (A) 14 23 Tennessee (A) 19 14 Kentucky (H) 13 28 Chattanooga (H) 0 29 Ga. Tech (A) 21 11/2 Florida (H) 11/9 Miss. State (N) 11/16 Georgia (A) 11/23 F.S.U. (H) 11/30 Alabama (N)	<b>DETROIT (1-4-1)</b> 14 Bowling Green (A) 27 20 N. Michigan (H) 7 12 Boston Col. (H) 20 18 Kentucky (A) 35 0 Cincinnati (A) 35 14 Dayton (A) 14 11/2 Houston (A) 11/8 Villanova (H) 11/15 Xavier (H) 11/23 Toledo (A)	<b>LOUISIANA ST. (5-1)</b> 14 Texas A&M (H) 6 12 Rice (A) 21 7 Ga. Tech (H) 6 3 Miami (A) 0 28 Kentucky (H) 7 14 Florida (A) 0 11/2 Mississippi (H) 11/9 T. C. U. (H) 11/16 Miss. State (N) 11/23 Tulane (H)
<b>GEORGIA (4-1-1)</b> 7 Alabama (H) 32 20 Vanderbilt (H) 0 27 S. Carolina (H) 7 7 Clemson (A) 7 31 Miami (A) 14 17 Kentucky (A) 14 11/2 No. Carolina (A) 11/9 Florida (N) 11/16 Auburn (H) 11/30 Ga. Tech (A)	<b>MIAMI (2-3)</b> 0 Florida State (H) 24 3 Purdue (H) 0 10 Tulane (A) 0 0 LSU (H) 3 14 Georgia (H) 31 11/2 Kentucky (A) 11/16 N. Carolina (A) 11/23 Florida (H) 11/30 Pittsburgh (H) 12/7 Alabama (H)	<b>VANDERBILT (0-5)</b> 13 Furman (H) 14 0 Georgia (A) 20 6 Alabama (H) 21 0 Florida (H) 21 7 Mississippi (A) 27 11/2 Boston Col. (A) 11/9 Kentucky (H) 11/16 Tulane (A) 11/23 Geo. Wash. (H) 11/30 Tennessee (A)	<b>BAYLOR (4-1)</b> 27 Houston (H) 0 15 Oregon St. (A) 22 14 Arkansas (H) 10 21 Texas Tech (A) 17 34 Texas A&M (A) 7 11/2 Tex. Chris. (H) 11/9 Texas (A) 11/16 Kentucky (H) 11/23 S.M.U. (H) 11/30 Rice (A)	<b>TENNESSEE (2-4)</b> 34 Richmond (H) 6 19 Auburn (H) 23 0 Miss. State (H) 7 7 Ga. Tech (H) 23 0 Alabama (N) 35 49 Chattanooga (H) 7 11/9 Tulane (A) 11/16 Mississippi (N) 11/23 Kentucky (A) 11/30 Vanderbilt (H)

*Welcome To*

# THE KENTUCKIAN MOTOR HOTEL

(Downtown — But Within Walking  
Distance of U of K)

100% Air Conditioned  
TV & Radio In All Rooms  
Free — Lighted Parking Deck

Our Ever Popular LEXINGTON ROOM  
For Dining  
MINT JULEP ROOM for Cocktails

**East High and Viaduct  
Phone 255-5199**

## 1963 FRESHMAN SCHEDULE AND RESULTS

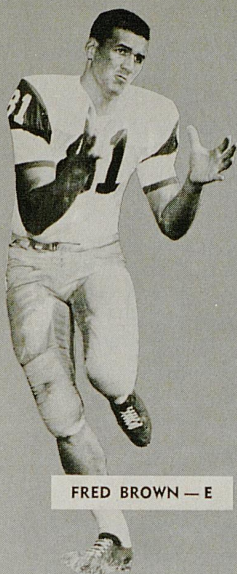
Date	Opponent	UK	Opp.
Oct. 12	Vanderbilt Frosh (A) ..	28	14
Oct. 28	Cincinnati Frosh (A) ....	39	0
Nov. 4	Xavier Frosh .....	Home	
Nov. 11	Tennessee Frosh .....	Home	

### 1962 RESULTS

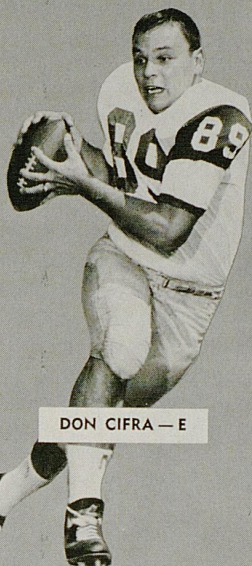
**Won 2, Lost 0, Tied 1 — .833**

42	Vanderbilt Frosh (H)	28
37	Cincinnati Frosh (H)	20
10	Tennessee Frosh (A)	10
—	—	—
89	—	58

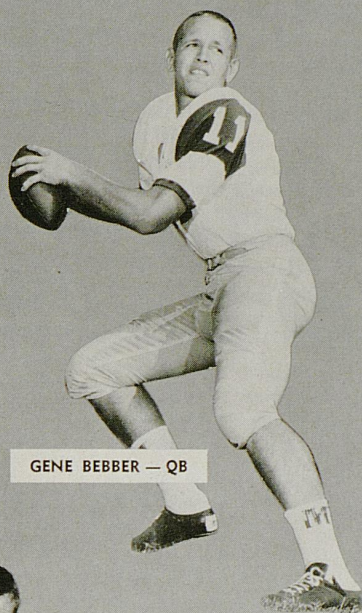
# HURRICANES



FRED BROWN — E



DON CIFRA — E



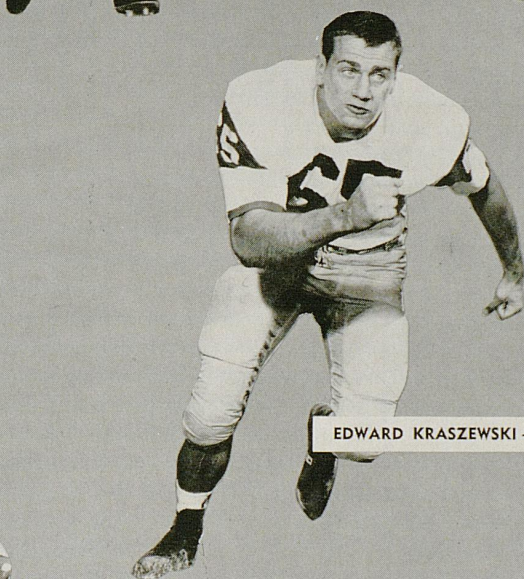
GENE BEBBER — QB



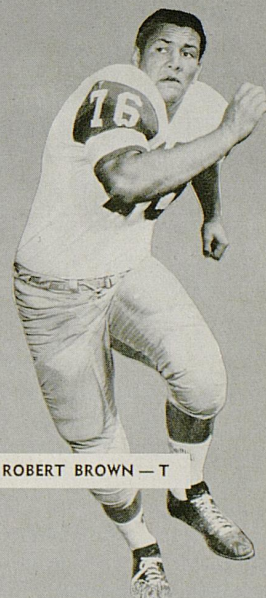
JOHN SISK — HB



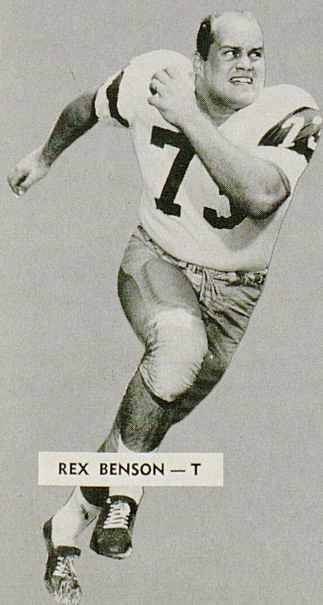
HARRY FERSCHE — T



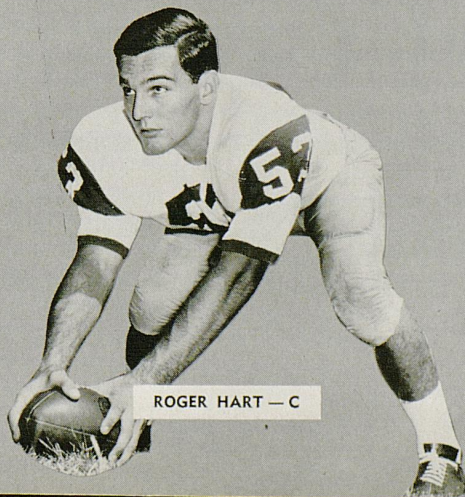
EDWARD KRASZEWSKI — G



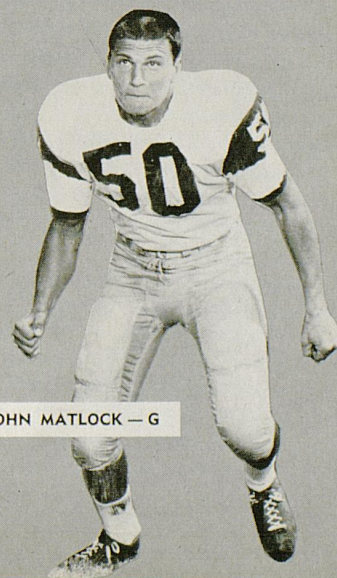
ROBERT BROWN — T



REX BENSON — T



ROGER HART — C



JOHN MATLOCK — G

**HOWARD JOHNSON'S**  
**Motor Lodge**



Nicholasville Road, U.S. 27, 2 Mi. So. of  
Downtown

Phone 277-1191, Lexington, Kentucky

LANDMARK FOR SLEEPY AMERICANS

*Flying Somewhere?*

Contact . . .

*All-American Tours Inc.*

(Lexington's oldest and largest travel agency)

Phoenix Hotel — Telephone 255-6780

. . . Where you get information on ALL  
airlines by one call or visit. There is no  
service charge.

——— ALSO ———

We have an attractive program of tours  
and cruises to all parts of the world.

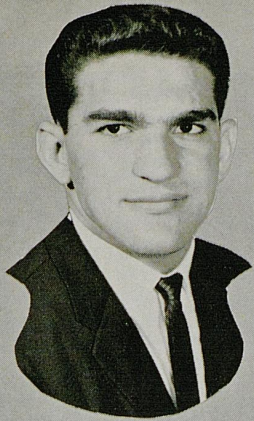
**Kennedy**  
**Book**  
**Store**

U.K. Shirts — Pennants — Decals  
Textbooks — School Supplies

**Turf Catering Co.**

"SERVING STOLL FIELD AND MEMORIAL COLISEUM"

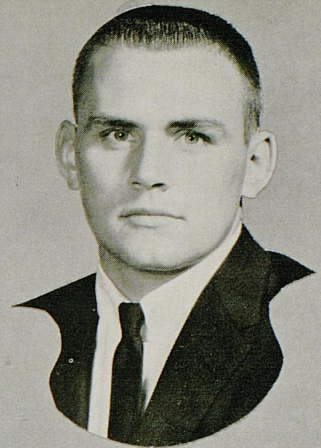
DELICIOUS HOT DOGS — COLD DRINKS — POPCORN  
PEANUTS — CIGARETTES — CANDY  
YOUR PATRONAGE KINDLY SOLICITED



VINCE SEMARY



BOB DUNCAN



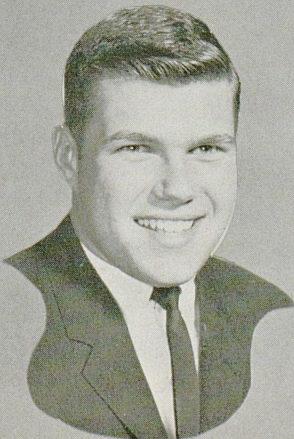
DOUG DAVIS



ED SMITH



FRANK BROCKARDT



RICH TUCCI



MIKE MCGRAW



JOHN SCHORNICK

## — Boosting the Wildcats to Success —

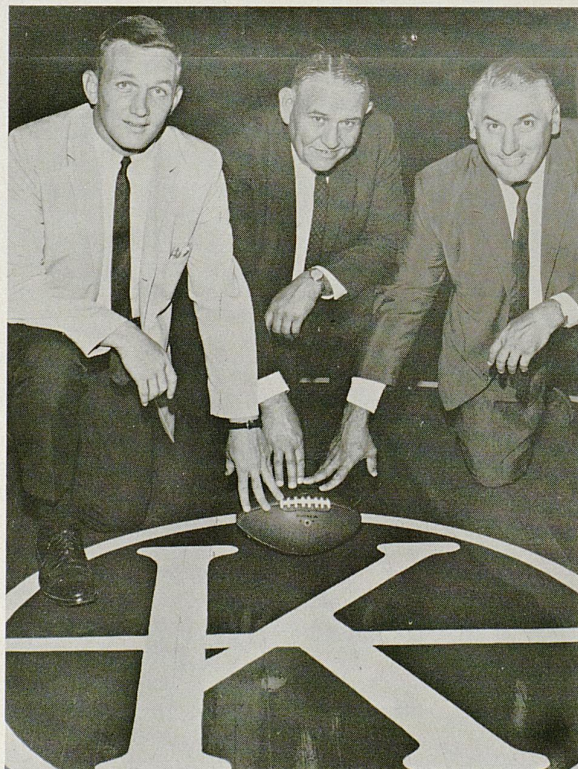
That old axiom which suggests an army travels on its stomach never had a more appropriate twist than it gets in the modern day world of sports.

Equally popular as a truism is the statement that declares successful athletic teams are "boosted" to the top—a reference to the all-important help within the strict bounds of official rules given by various interested organizations such as the ones represented by the photographs.

University of Kentucky athletic officials—Director of Athletics Bernie Shively and members of the coaching staffs—as well as the young men who are either team members or prospective Wildcats sincerely appreciate the public-spirited assistance given in particular by the Lexington Quarterback Club, UK Committee of the Chamber of Commerce, K-Men's Association and the Lexington Salesmen's Club.

The makeup of these groups includes businessmen and private citizens of the University community who voluntarily donate of their valuable time and effort on a year-around basis to promote and handle other non-coaching assignments ranging from the actual selling of tickets to making the high-type athletes feel that they have a home away from home while playing for the Wildcats.

**K MEN'S ASSOCIATION**—Newest of the organizations giving active support to the Wildcat cause is this club composed of former Kentucky athletes in all sports who were awarded at least one varsity "K" letter during their careers at the University. Directing the activities of the combined K Men's Association are Frank Seale (center), president and former football letterman; Dick Rushing (left), secretary and also an ex-footballer; and Carl (Hoot) Combs, treasurer who participated in both football and basketball as a Wildcat.





**LEXINGTON QUARTERBACK CLUB**—President Jim Barlow and Vice-President Luther Chappel (center) execute a handoff play symbolizing the team work of officers and directors of one of the most helpful organizations in the country. Surrounding the pair are Secretary-Treasurer Gene Marlowe (behind Barlow) and directors (left to right) Ed Williams, Fred Staples, L. C. Redmon, Logan Shearer, Henry Newman, Frank Seale, L. W. Haley, Athletic Coordinator Bill Faulkner, Taylor Hudson, Kermit Little, Bob Stephens and Bob Sparks.

**UK COMMITTEE, CHAMBER OF COMMERCE**—Heading up this vitally interested group of civic leaders is Kentucky's nominee for "Man of the Year," untiring Bill Faulkner (seated fourth from left). Other members of the committee which greets and sends off the Wildcats and visiting teams as well as performing other functions are (seated left to right) John Jones, Mrs. Hampton Adams, Logan Gray, Chester Hager, Ed Williams, Mrs. Joe Morris, Luther Chappel, Bob Sparks, Miss Helen King; (standing) UK Athletic Director Bernie Shively, Bill Carl, Dick Rushing, Bob Lutes, Bill Bond, C. H. Smith, Charley Taylor, Barry Morris, Frank Dawahare, Russell Lutes, Joe Nash, Henry Hettle, Howard Orme, Robert Milward, Sam Huey, Taylor Hudson and Rev. Don Herrin.



**SALESMEN'S CLUB**—One of the long-time supporters of the University of Kentucky athletic program is the Lexington Salesmen's Club, represented by the group picture. Current officers of the organization, which assists annually in the sale of season football tickets, are W. Barry Foster, president; Ed Williams, first vice-president; Thurmon Measel, second vice-president; Delmar Penny, secretary; D. S. Hollman, treasurer; and Charley Thompson, sergeant-at-arms.

## **SOUTHLAND SPORT SHOP**

**Distributors of**

*Riddell, Spanjian, Hyde, Rawlings, Wilson, and Spalding Sporting Goods*

*Adidas Track Shoes*

*Cramer Products*

**Plenty of Free Parking Space**

**Gene Stokley — In The Southland Shopping Center — Dick Wallace**

**P.O. BOX 8251**

**PHONE 277-3977**

## **Hargett Construction Co.**

**INCORPORATED**

---

**General Contractors**

---

**Phone 252-2992**

**998 New Circle Rd., N.E. Lexington, Ky.**



## **Two Locations To Serve You Better**

**MARLOWE TIRE CO., INC.**

851 North Broadway  
Phone 252-1786

**MARLOWE SOUTHLAND  
SERVICE**

403 Southland Drive  
Phone 277-5892

**SINCLAIR OIL PRODUCTS**

## **BECKER**

**LAUNDERERS CLEANERS**

**5 Convenient Locations**

**Our Newest Location—Southland Shopping Center—Next to Sageser Drug**

**NOBODY can Launder a Shirt like BECKER**



# FROM THE UK GRIDIRON PAST . . .

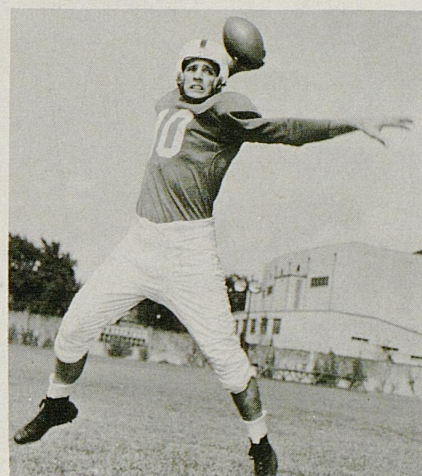
## Outstanding Games With Today's Opponent



BIRD



MEILINGER



PARILLI

### 1959—KENTUCKY 22, MIAMI 3

Making only its second return visit to the stadium that was the scene of their unsuccessful first major bowl venture, Kentucky's Wildcats amazed a partisan Orange Bowl crowd by taming the Miami Hurricanes and taking their fifth straight victory in the series, 22-3.

The first Miami punt of the night resulted in Kentucky's first score as Wildcat speedster **Calvin Bird** returned the kick 55 yards in a thrilling touchdown run.

Minutes later the Hurricanes pounced on a Kentucky fumble and, when the Big Blue line held, they proceeded to kick a 24-yard field goal that seemingly put them back in the ball game. But the three points proved to be the last that the home club was to put on the scoreboard in the fateful evening.

Leading only 7-3 at the halfway mark, the Wildcats got a break in the third period when a poor pass from center caused a Miami punt to be partially blocked. UK tackle **Bob Hunt** picked the ball up on the five-yard line and bulled his way forward to within one foot of the goal line. Quarterback **Jerry Eisaman** scored on a sneak and Bird added his second extra point of the night to bring the count to 14-3.

Early in the final frame, UK drove 63 yards in five plays for its last TD with the speedy Bird going the last 39 yards. Eisaman passed to end **Ledger Howard** for the two-point conversion.

### 1952—KENTUCKY 29, MIAMI 0

**Coach Paul (Bear) Bryant** revamped his Wildcat lineup after six uninspired efforts in a so-so season and the juggling paid off handsomely as they shocked the home-standing Hurricanes of Miami, 29-0, in what proved to be their best scoring effort of the year.

Featured changes in the "new look" lineup saw big end **Steve Meilinger** move into a quarterback role on occasions and **Dick Shatto** operating at halfback.

The opening UK score came early in the second period with the aid of a dazzling, 34-yard punt return by **Dick Mitchell** and before intermission the Wildcats had another as the result of a 47-yard drive capped by a touchdown pass

from **Herbie Hunt** to Meilinger (this time back at end). Specialist **Bob Bassitt** kicked the extra point to give Kentucky a 13-0 halftime lead.

Early in the third period, long sprints by Shatto and **Ralph Paolone** put the ball deep in Hurricane territory. When Miami held, Bassitt came in to boot a field goal from a difficult angle.

Kentucky scored again the next time it had possession, moving 47 yards in eight plays with Shatto adding the padding on an eight-yard plunge. Bassitt converted.

With Meilinger at quarterback, UK accounted for its final points of the night by driving 77 yards in just seven tries. Big Steve scored from the one after his pass to **Clyde Carlig** had picked up 43 yards on the previous play.

### 1951—KENTUCKY 32, MIAMI 0

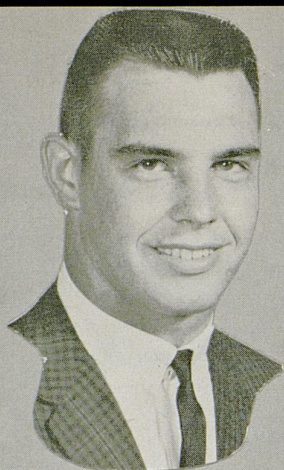
Backed up by terrific line play, All-America quarterback **Babe Parilli** bombed Miami's Hurricanes with 12 of 21 passes for 103 yards and three touchdowns to lead his Kentucky mates to a surprisingly-easy, 32-0 victory over the team that had entered the contest as the nation's third-ranked outfit in pass defense.

Only five minutes had elapsed in the opening period of action when the Kentuckians had their first points on the scoreboard. **Emery Clark** returned an intercepted Miami aerial to the six from where Parilli tossed to **Steve Meilinger** for the touchdown. **Harry Jones** converted.

Midway in the second stanza, Parilli and Meilinger collaborated on an encore—this time for 15 yards—and the 'Cats were out in front 13-0.

On the ensuing kickoff, UK's **Calvin Smith** pounced on an on-side kick to give his team possession at the Miami 37. Only three plays later, Parilli's great faking and deceptive handoff to Clark netted the Wildcats their third touchdown on a 15-yard operation. For the second time in 1½ minutes, Kentucky had scored and now led by 19-0.

After intermission, UK tacked on a fourth tally as Parilli connected on a 17-yard pass to **Ed Hamilton**. The final TD of the night followed shortly after **Doug Moseley** had intercepted a Miami pass and lugged it back to the 22. **Tom Fillion** plunged over from the five for the marker.



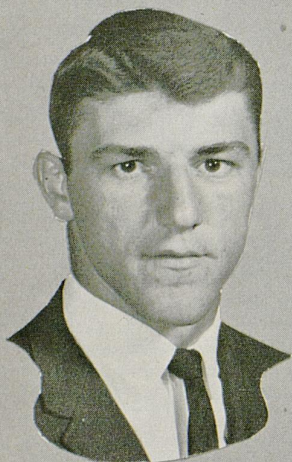
CLYDE RICHARDSON



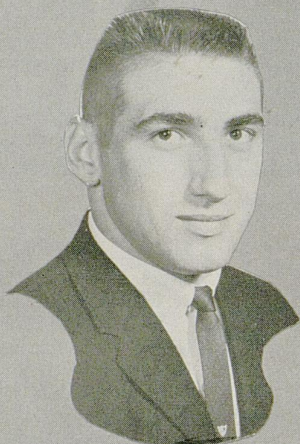
TALBOTT TODD



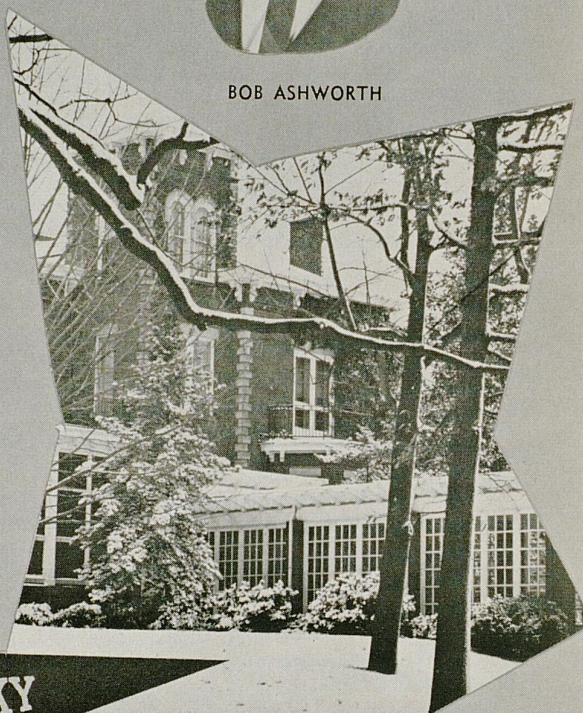
BOB ASHWORTH



JIM KOMARA



JOHN ANDRIGHETTI



JIM FOLEY



JIM BOLLING



BOB KOSID

# Lexington Yellow Cab Co.

Inc.

ALL  
RADIO CABS

Dial 252-2230

ALL  
RADIO CABS

*"IRRESISTIBLE" Your Home in Modern, Provincial*

*or Early American, by . . .*



## ROBERTS

*Furniture Company*

Established  
1893

• Open Monday Night  
to 9 . . . for Your  
Shopping Pleasure!

425 W. MAIN • FREE PARKING AT SIDE DOOR

**We at HUNT'S are pleased to supply to the University of Kentucky Athletics Association merchandise manufactured by the following firms:**

Bike Web Company—Trainers Supplies

Converse Rubber Company—Basketball Shoes

Cramer Chemical Company—Trainers Supplies

Fair Play Scoreboard Company—Football Scoreboard and Basketball Scoreboard

Hillerich and Bradsby Company—Louisville Slugger Bats

Johnson and Johnson—Trainer's Tape

King O'Shea Company—Basketball Uniforms

MacGregor Company—Football Uniforms and Equipment for Football and Baseball

Pennsylvania Rubber Company—Tennis Balls

Powers Mfg. Company—Award Jackets

John T. Riddell, Inc.—Football Helmets and Shoes

A. G. Spalding & Bros.—Footballs and Basketballs

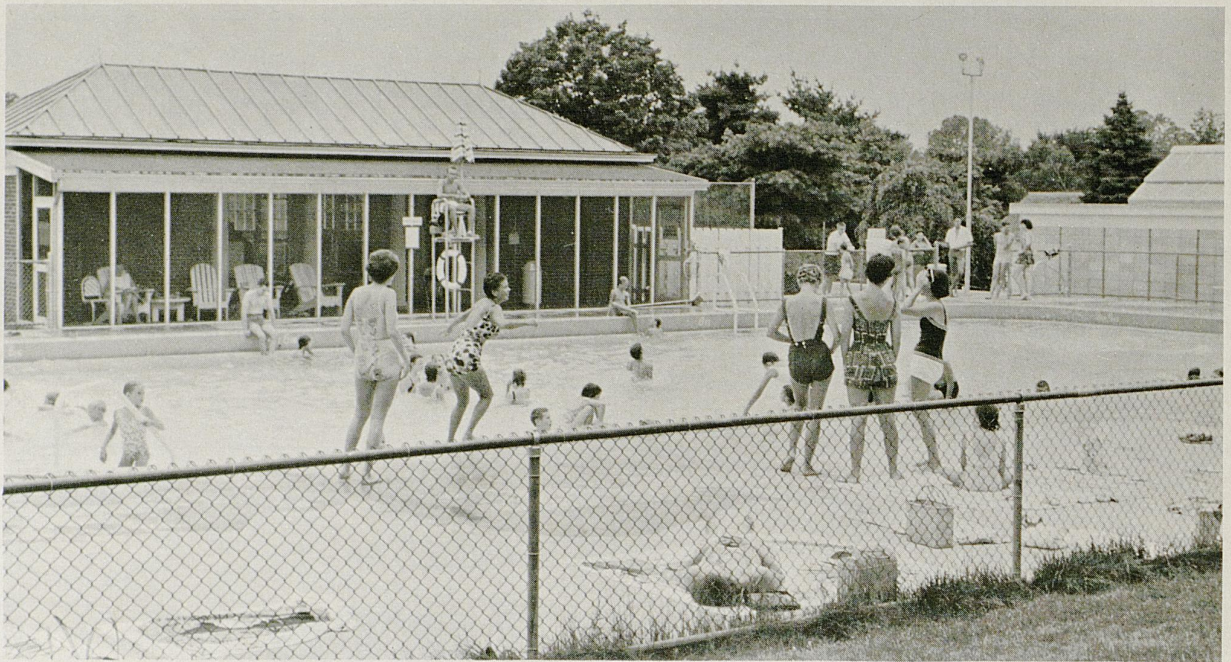
Spanjian of Pasadena—Football and Baseball Uniforms

**We are grateful to the above manufacturers who sponsor this ad.**

**HUNT'S ATHLETIC GOODS CO., INC.**

*"We Ship The Day You Buy"*

**MAYFIELD, KENTUCKY**



*Popular spot on hot summer day*

## *Majestic Spindletop Hall: University Social Center*

Spindletop Hall—majestic structure on the Ironworks Pike—was once a private residence and is now serving as a social and recreation center for University faculty, staff and alumni. Over 1,300 memberships make it the largest club in the Lexington area.

A year-around program of entertainment is provided and dining and guest lodging facilities are of the finest. The large swimming pool is a popular spot in the summer as is the shaded picnic area.

Also located on the Spindletop farm is the American Saddle Horse Museum which is attracting horse lovers from throughout the nation and many foreign countries.



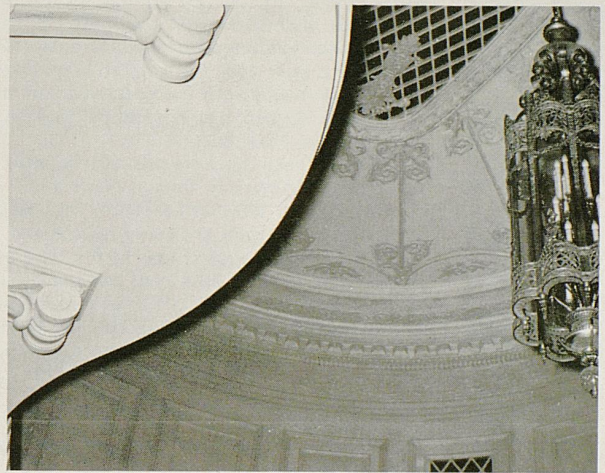
*Attracting horse lovers from near and afar*



*Showplace of the Blue Grass*



*One of elegant guest rooms*



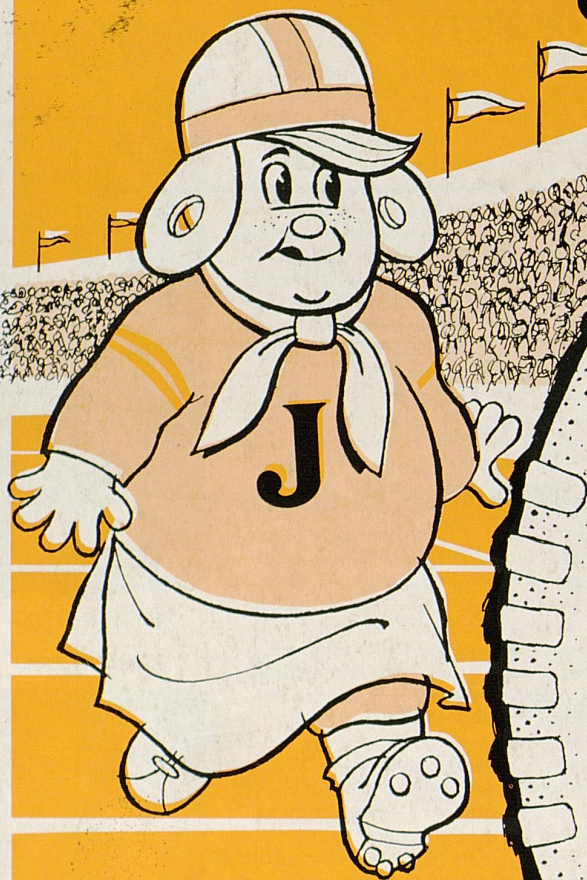
*Splendor of Main Hall*

*Food excellent, service superb*



AFTER THE GAME GO...

# Jerry's



## FIVE LOCATIONS

1. 357 S. Lime  
(Opposite U.K.)
2. 1949 Nicholasville Rd.  
(At Southland Drive)
3. 652 E. Main St.  
(Opposite Henry Clay Hi)
4. 1127 Winchester Road
5. North Broadway and  
New Circle Road

For Sports Scores 24 Hours a  
Day Phone JERRY'S "Dial-A-  
Score" at 255-5785.