

INSURANCE MAPS of FRANKFORT KENTUCKY

Franklin Co. Kentucky
Sanborn Map Company
SCALE 50 FT. TO AN INCH
11 BROADWAY NEW YORK

Sept 1907
Copyright 1907, by the Sanborn Map Co.

Map Division
DEC 3 1907
Library of Congress

RECORDED IN OFFICE OF THE CLERK OF COURTS
NOV 23 1907
11852

Population 15,000, Prevailing Winds N & W
WATER FACILITIES

Gravity system of water-works, constructed in 1886. Water supply from Kentucky River pumped to two reservoirs located on hill 300 ft. above cor. of Main and St Clair Sts and one mile S.W. of city limits, capacity 3 million gals. each. Pumping station shown on sheet no. 27. One heavy duplex pump, cap'y 2 million gals. one light duplex pump cap'y million gals. and one heavy duplex pump cap'y 1 1/2 million gals. per 24 hours. 16 miles of water pipes, 6" to 14" diam. 125 double hydrants. Average pressure 120 lbs per sq. inch.

FIRE DEPARTMENT
Paid 4 men, 4 horses, swinging ladders. Gamewell fire alarm system 21 boxes. All iron sleep at fire station.
Two hose wagons, 300 ft. of hose on one and 500 ft. on the other. One iron & bucket truck, with two 3 gal. chemical extinguishers. 700 ft. of hose in reserve.
City surrounded by high hills. Principal streets Macadamized. Grade of streets shown on survey, level, except as indicated on sheets nos 15 and 16.



KEY

STREETS
FIRST WIDE 6 IN. 8 IN. 10 IN. ROOF
SECOND WIDE 6 IN. 8 IN. 10 IN. ROOF
THIRD WIDE 6 IN. 8 IN. 10 IN. ROOF
FOURTH WIDE 6 IN. 8 IN. 10 IN. ROOF
FIFTH WIDE 6 IN. 8 IN. 10 IN. ROOF
SIXTH WIDE 6 IN. 8 IN. 10 IN. ROOF
SEVENTH WIDE 6 IN. 8 IN. 10 IN. ROOF
EIGHTH WIDE 6 IN. 8 IN. 10 IN. ROOF
NINTH WIDE 6 IN. 8 IN. 10 IN. ROOF
TENTH WIDE 6 IN. 8 IN. 10 IN. ROOF

BUILDINGS
COLOR YELLOW ARE FRAME
COLOR RED ARE BRICK
COLOR BLUE ARE STONE
COLOR BROWN ARE ADGCE
COLOR BLACK ARE SPECIALS

SYMBOLS
CIRCLES ARE HELD RESIDENTS
SQUARES ARE HELD RESIDENTS
STARS ARE HELD RESIDENTS
ALTERNATE STREET NUMBERS ARE ACTUAL
CONSECUTIVE STREET NUMBERS ARE ALTERNATE

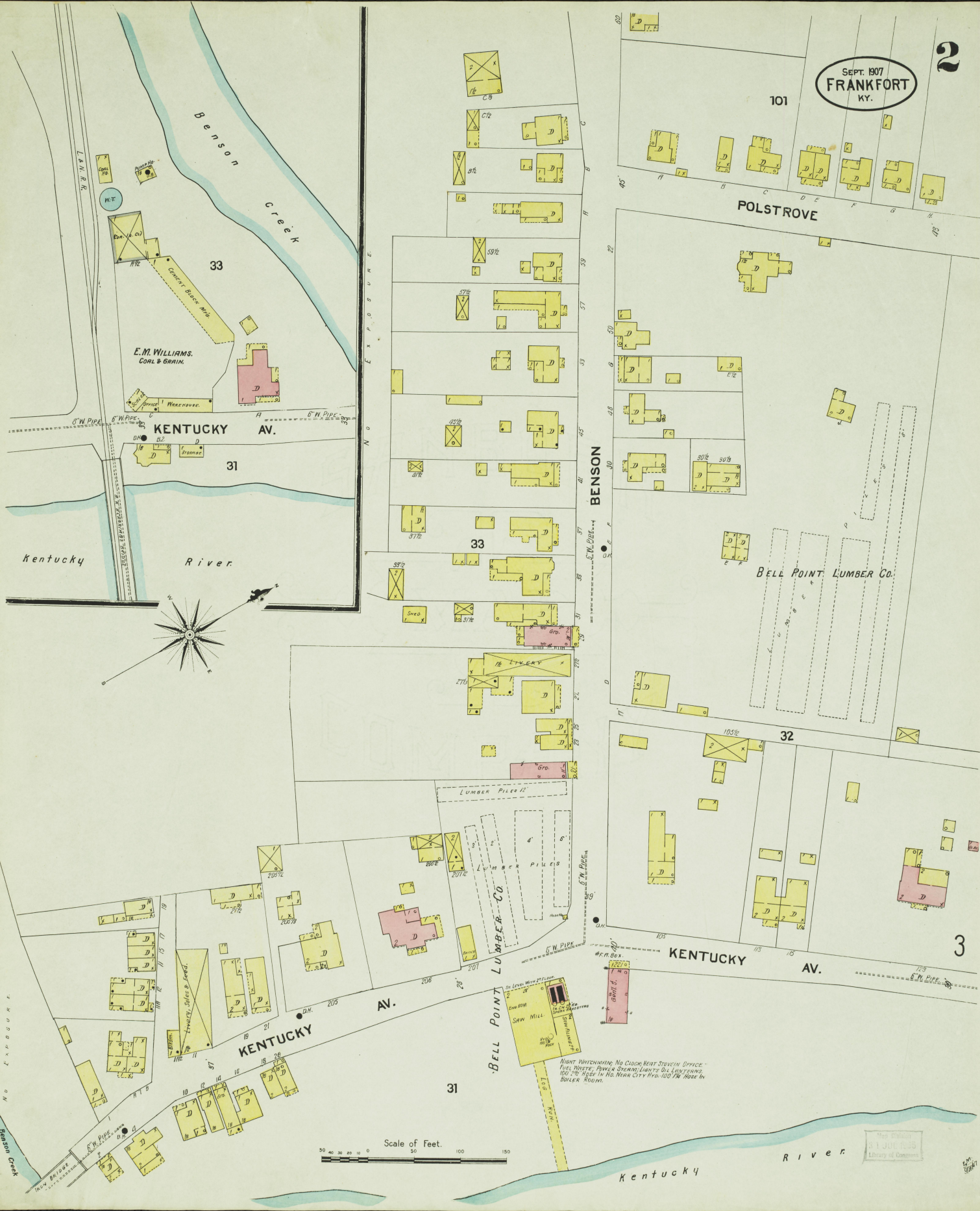
I N D E X

S T R E E T S			S P E C I A L S		
A	D	M	A	D	M
Ann 100-244 *14	Dabney 100-244 *14	Madison 300-347 *12	Third 112-344 *18	Capital Foundry & Machine Co. 8	Gains, W. A. & Co., Bottling 14
Battle Alley 127-347 *15	Dudley 100-145 6	Main 1-145 *13	Washington 1-145 *13	Gas & Elec. Light Co. 5	Heritage Distill. 21
Benson 300-446 *12	Elks Alley 400-545 7	Major 100-145 6	Wapping 1-146 13	Lumber Co. 19	Gains, W. A. & Co., Old Crow Distill. 14
Brawner 300-446 *12	Fourth Ave. 112-347 *15	Merrill 200-347 *14	Wilkinson 1-144 13	Steam Laundry 14	ery 30
Bridge 1-146 13	Fowler 100-245 21	Michigan 100-245 21	Worm Lane 16	Capitol Buildings, (New) 17	Gayle & Longmore, Tobacco Factory 27
Broadway 200-344 *12	High 200-347 *15	Mitchell 100-245 21	Worth 1-145 *13	Capitol Buildings, (Old) 17	Glennwood Park 28
Campbell 200-344 *12	Hill 100-145 6	Murray 1-18 30	Wright 1-146 13	Hotel 10	Hammond & Co., Lumber 14
Capitol Ave. 200-345 *12	Holmes 300-345 *12	New 300-345 *12	Wynne 1-146 13	Hotel 10	Henry, A. C., Greenhouses 28
Cat Fish Alley 400-447 *12	Holmes Street Extension, N. 1-12 30	Owenton Pike. 28	Wynne 1-146 13	Hotel 10	Herbert, S. C., Old Judge Distillery 10
Clinton 2-144 *13	Kentucky Ave. 1-124 3	Polk 1-144 13	Wynne 1-146 13	Hotel 10	Hodge, Coal & Feed Co. 4
Conway 100-147 18	Lewis 100-247 *14	Polk 1-144 13	Wynne 1-146 13	Hotel 10	Hodge-Montgomery Co., Prison Shop, 8
Conway 200-345 *12	Logan 200-345 *12	Polk 1-144 13	Wynne 1-146 13	Hotel 10	Hodge-Montgomery Co., Warehouse, 7
Coke 401-545 *13	Long Lane Alley 200-347 *11	Polk 1-144 13	Wynne 1-146 13	Hotel 10	Hodge-Montgomery Co., Warehouse, 7
Crow 401-545 *13	Long Lane Alley 200-347 *11	Polk 1-144 13	Wynne 1-146 13	Hotel 10	Hodge-Montgomery Co., Warehouse, 7

NOTE - * Indicates only one side of street shown.

SEPT. 1907
FRANKFORT
KY.

2



E.M. WILLIAMS,
COAL & GRAIN.

KENTUCKY AV.

POLSTROVE

BELL POINT LUMBER CO.

KENTUCKY AV.

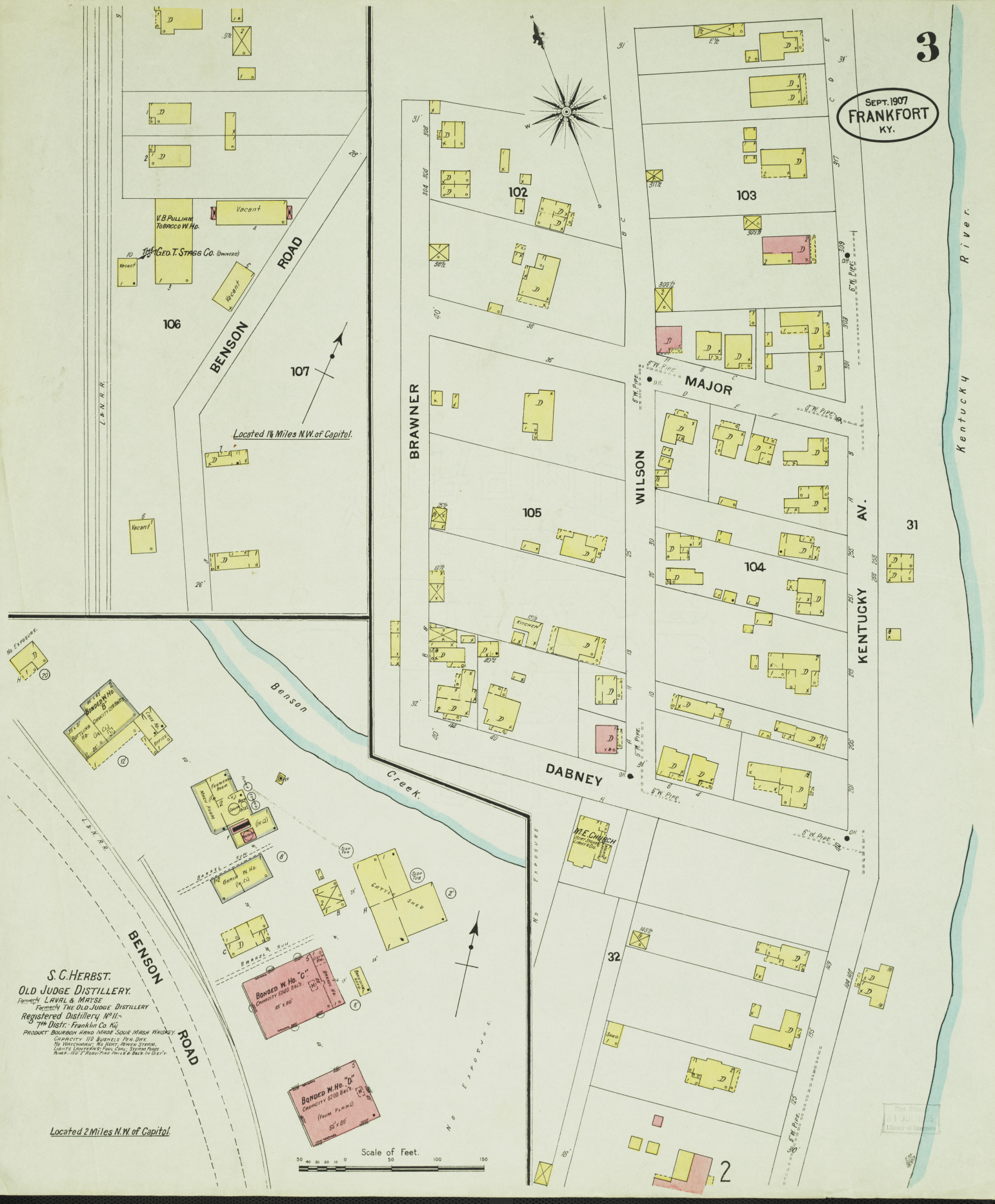
KENTUCKY AV.

BELL POINT LUMBER CO.

Scale of Feet.

NIGHT WATCHING: NO CLOCK BEAT STATION OFFICE -
FUEL WASTE, POWER STATION LIGHTS ON LUNTERING,
100 YD. SIGNS IN RD. NEAR CITY HALL - 100 YD. HOSE IN
BOILER ROOM.

Map of
FRANKFORT
Library of Congress



V.B. PULLIAM
TOBACCO W.H.O.

THE GEO. T. STAGE CO. (Successors)

Vacant

BENSON ROAD

Located 1 1/2 Miles N.W. of Capitol.

No. 106

Vacant

BRAWNER

WILSON

MAJOR

KENTUCKY AV.

DABNEY

BENSON ROAD

S.C. HERBST.
OLD JUDGE DISTILLERY.
Formerly LAYAL & MAYSE
Presently THE OLD JUDGE DISTILLERY
Registered Distillery No. 11.
7th Dist. - Franklin Co. Ky.
PRODUCT: BOURBON HAND MADE SOUR MASH WHISKEY.
CAPACITY: 110 BURNELLS PER DAY.
No. DISTILLING, No. DIST. BOTTLE STAMP.
SALES: DISTILLING, No. DIST. BOTTLE STAMP.
RUMS: 100% GRAIN NEUTRAL SPIRITS IN QUART.

Located 2 Miles N.W. of Capitol.

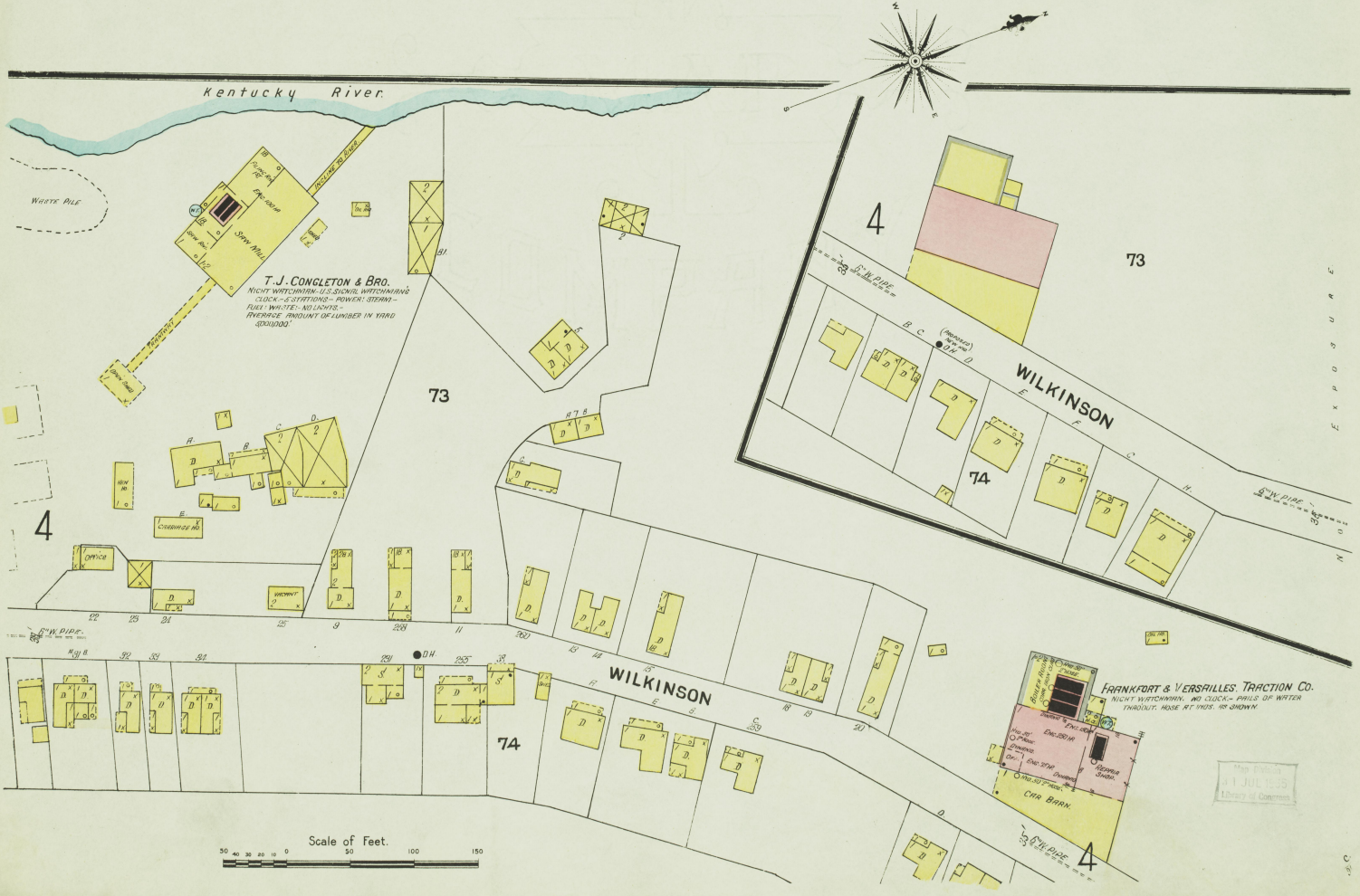
BONDED W. H. O. No. 70
CAPACITY 1000 BALS.
(From P. L. No. 12)

Scale of Feet.

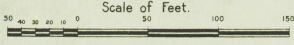
Map No. 11
1 JUL 1907
15m of Capitol

Kentucky River

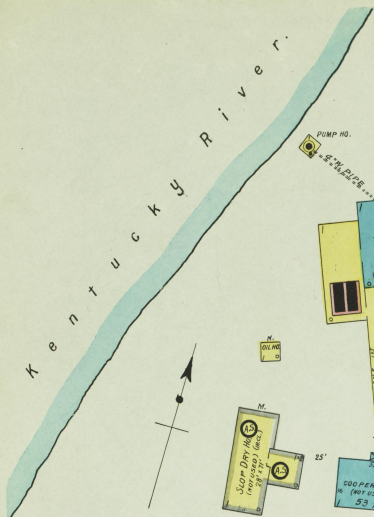
SEPT. 1907
FRANKFORT
KY.



FRANKFORT & VERSAILLES TRACTION CO.
NIGHT WATCHMEN, NO CLOCK - PILES OF WASTE
PRODUCT, HOSE AT FOOT, IN SHOWY.

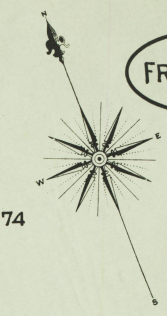


This plan is
of JUL 25
Library of Congress

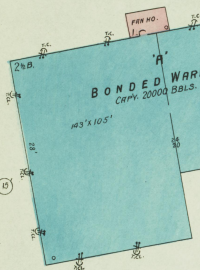


SEPT. 1907
FRANKFORT
KY.

5

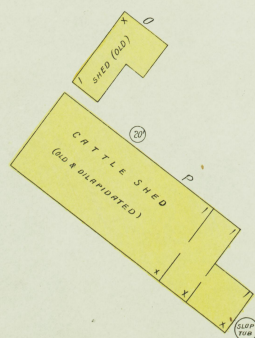
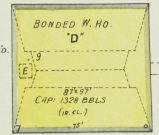


74

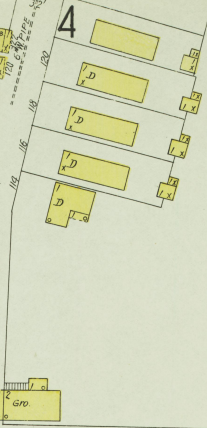


KENTUCKY DISTILLERY AND WAREHOUSE CO.
OWNED BY **JOHN COCHRAN AND CO.**
Registered Distillery No. 37. - 7th District.
Franklin Co. Ky.
MFGS. OF SPRING HILL WHISKEY.
HAND MADE SOUR MASH, BOUNDED & RYE.

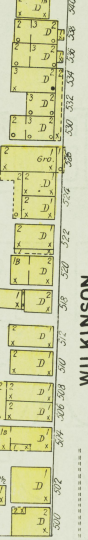
NOTE: WATCHMAN - 1-8 GREEN CLOCKS - 4 STATIONS -
HARDY STOVE IN YEAST RM. - GRATE IN OFF. - INDIRECT.
STEAM IN WARE HO. - DIRECT STEAM IN WARE HO. -
POWER - STEAM - LIGHTS - OIL - FUEL COAL -
GRIMMEL RPT. SPARKLERS AS SHOWN. ARE FEED
BY 30000 GALS. PRESSURE ON HILL TOPPING REELS.
PRESSURE, ALSO DIRECT COIN. WITH 400 GALS.
STEAM PUMP - 100' 1/2" HOSE - 1" PIPES & BARRELS DIST.



73



58



HILL

DUDLEY

ALLEY
LONG LANE

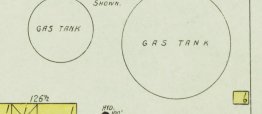
WASHINGTON

6

12

MERO

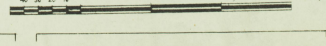
CAPITAL GAS AND ELECTRIC LIGHT CO.



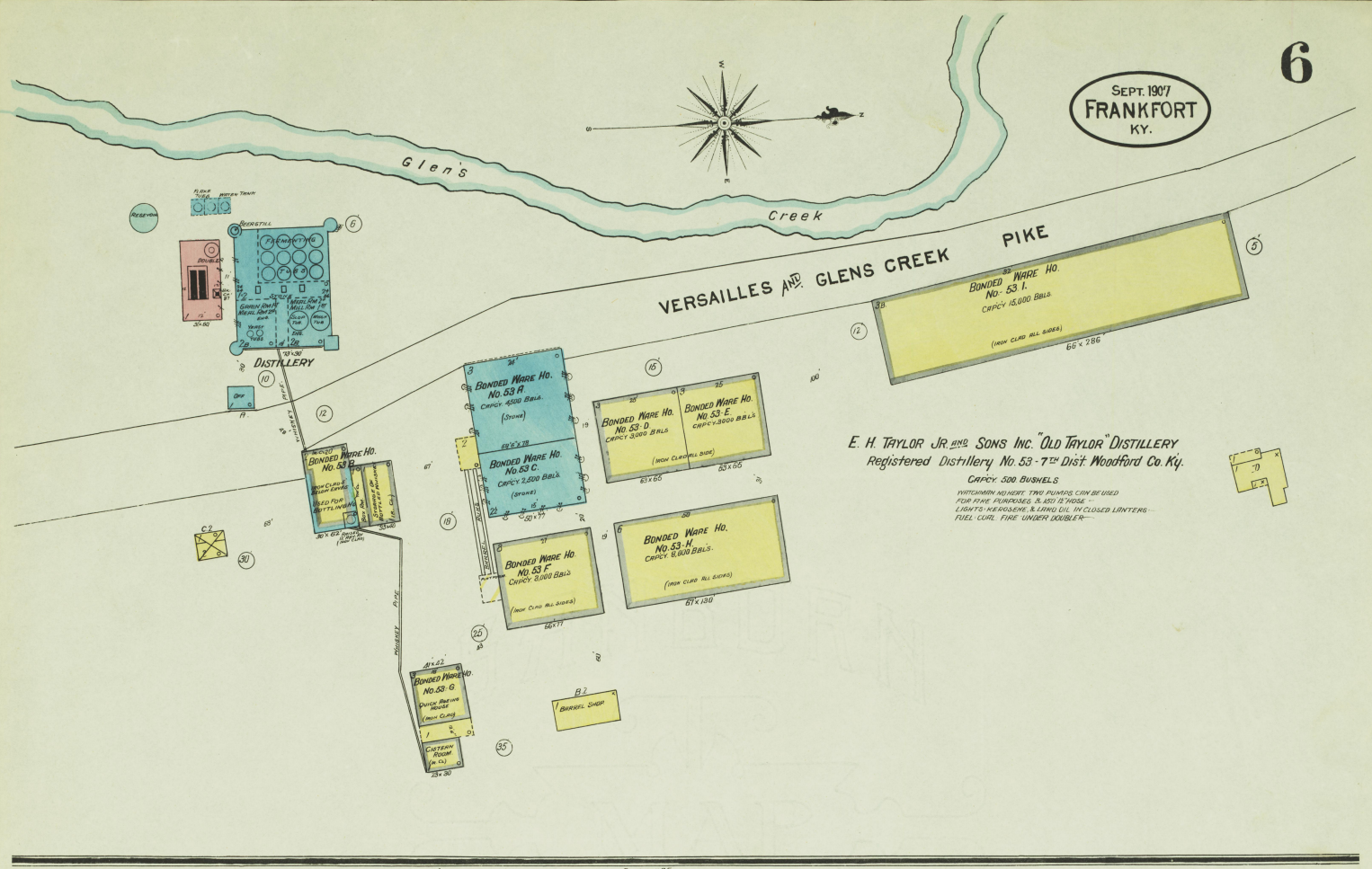
CLINTON

11

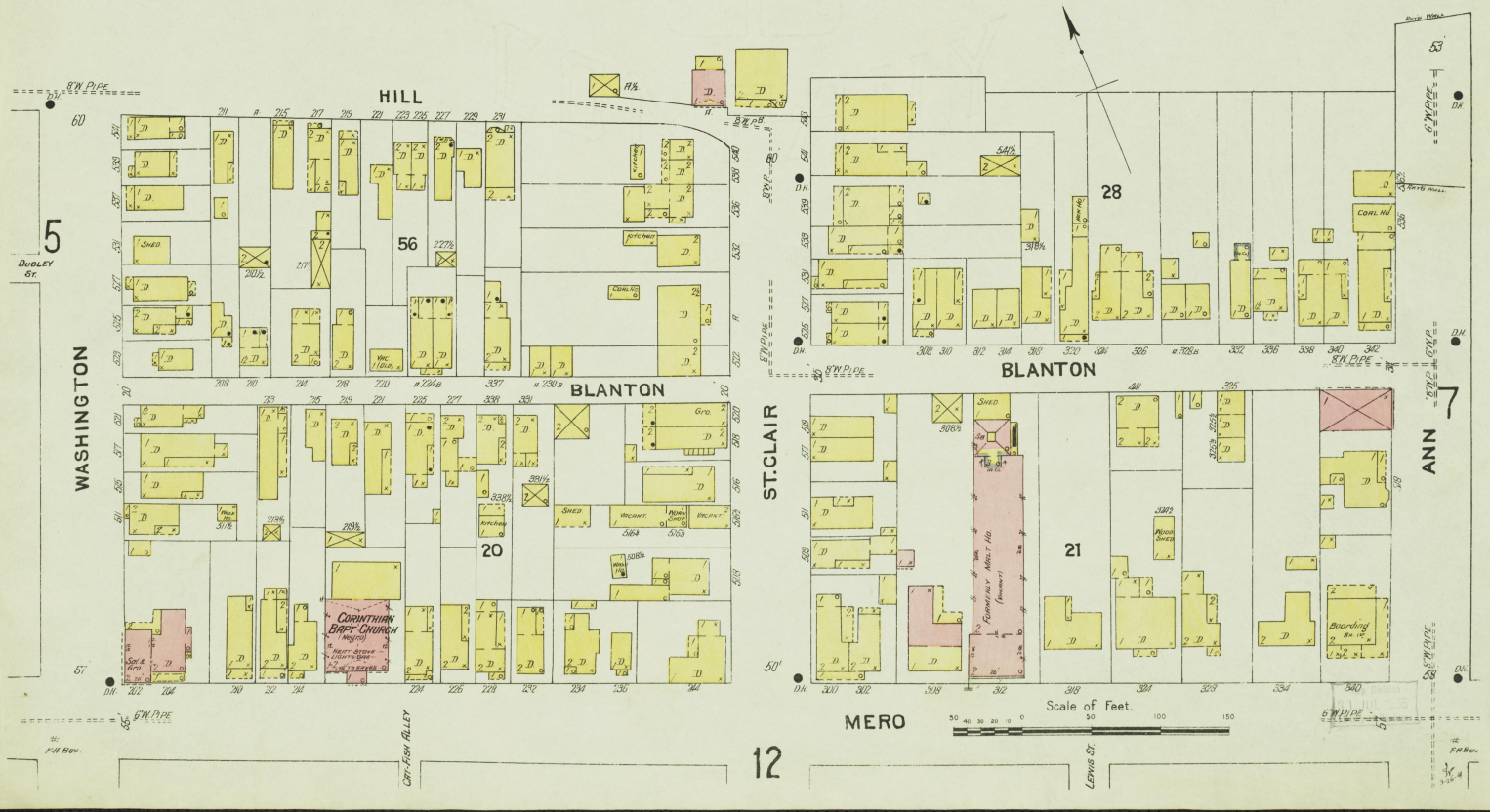
Scale of Feet.

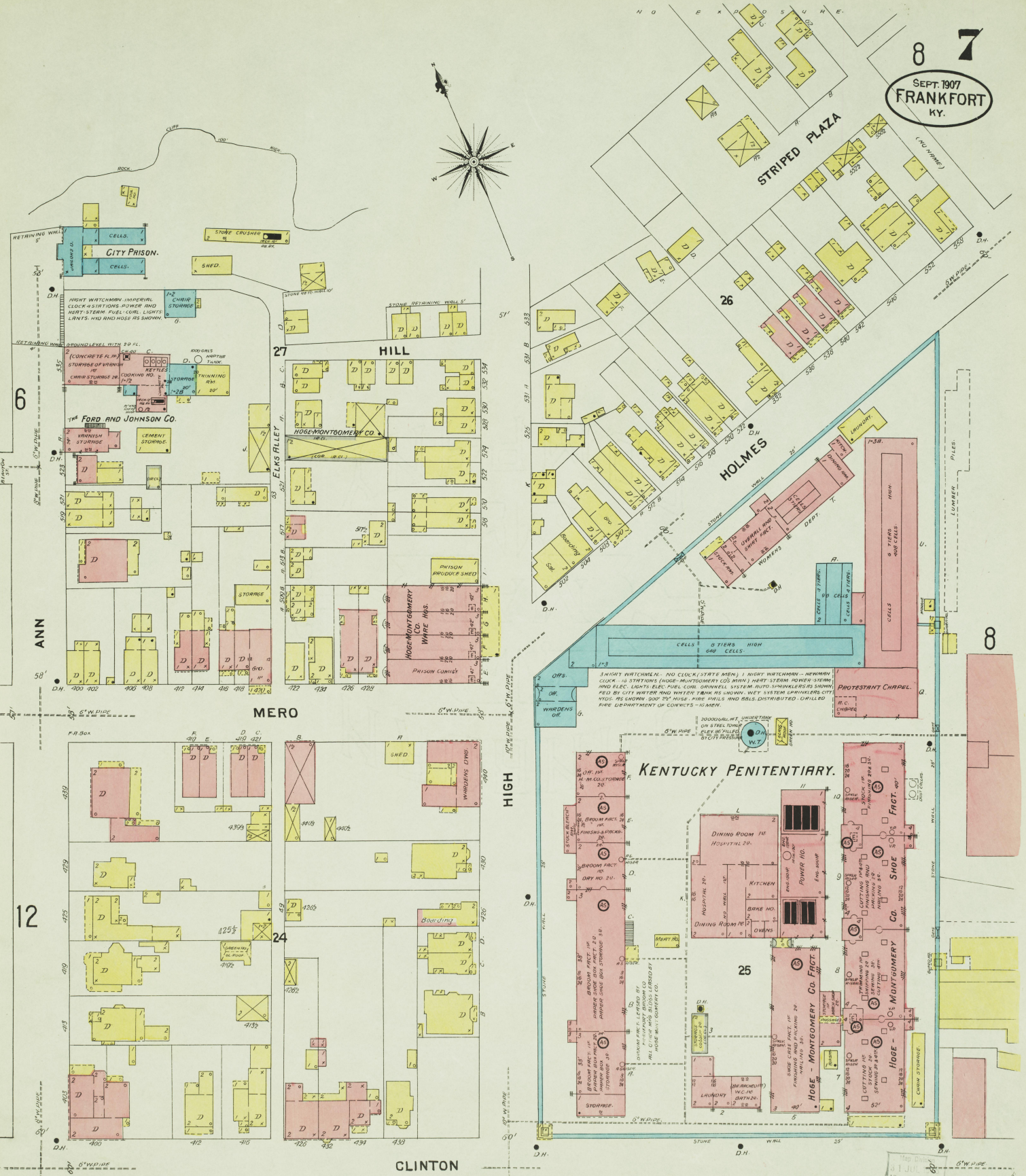
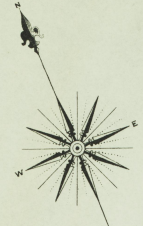


SEPT. 1907
FRANKFORT
KY.



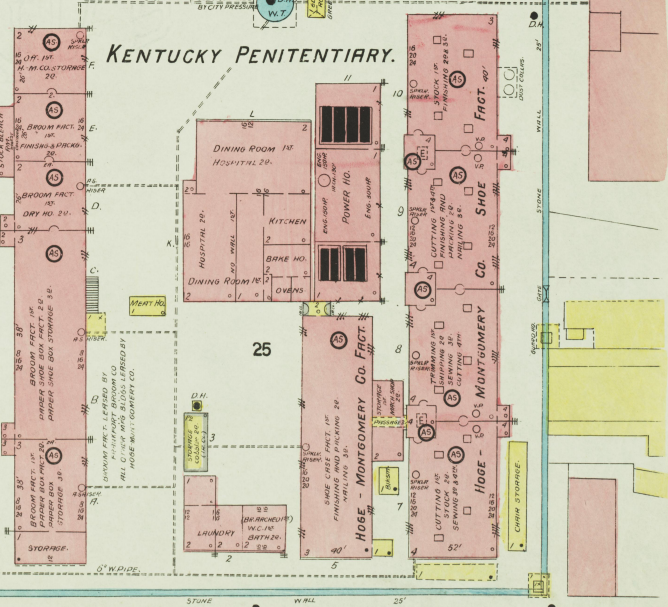
No. EXPOSURE





1 NIGHT WATCHMAN - NO CLOCK (STREET AREA) 1 NIGHT WATCHMAN - MENING CLOCK - IN STATIONS (HOPE-MONTGOMERY CO. MAN.) HEAT STEAM POWER SYSTEM AND ELEC. LIGHTS ELEC. FUEL COIL. GRINNELL SYSTEM. AUTO SPRINKLERS SHOWN FIELD BY CITY WATER AND WATER TANK AS SHOWN. WET SYSTEM LEADERS ARE NOTED AS SHOWN. 900 2" PIPE. FIRE PIPES AND BELLS DISTRIBUTED. CHILLED PIPE DEPARTMENT OF COMMERCE - ISBARK.

KENTUCKY PENITENTIARY.



Scale of Feet.
0 20 40 60 80 100 120 140 150

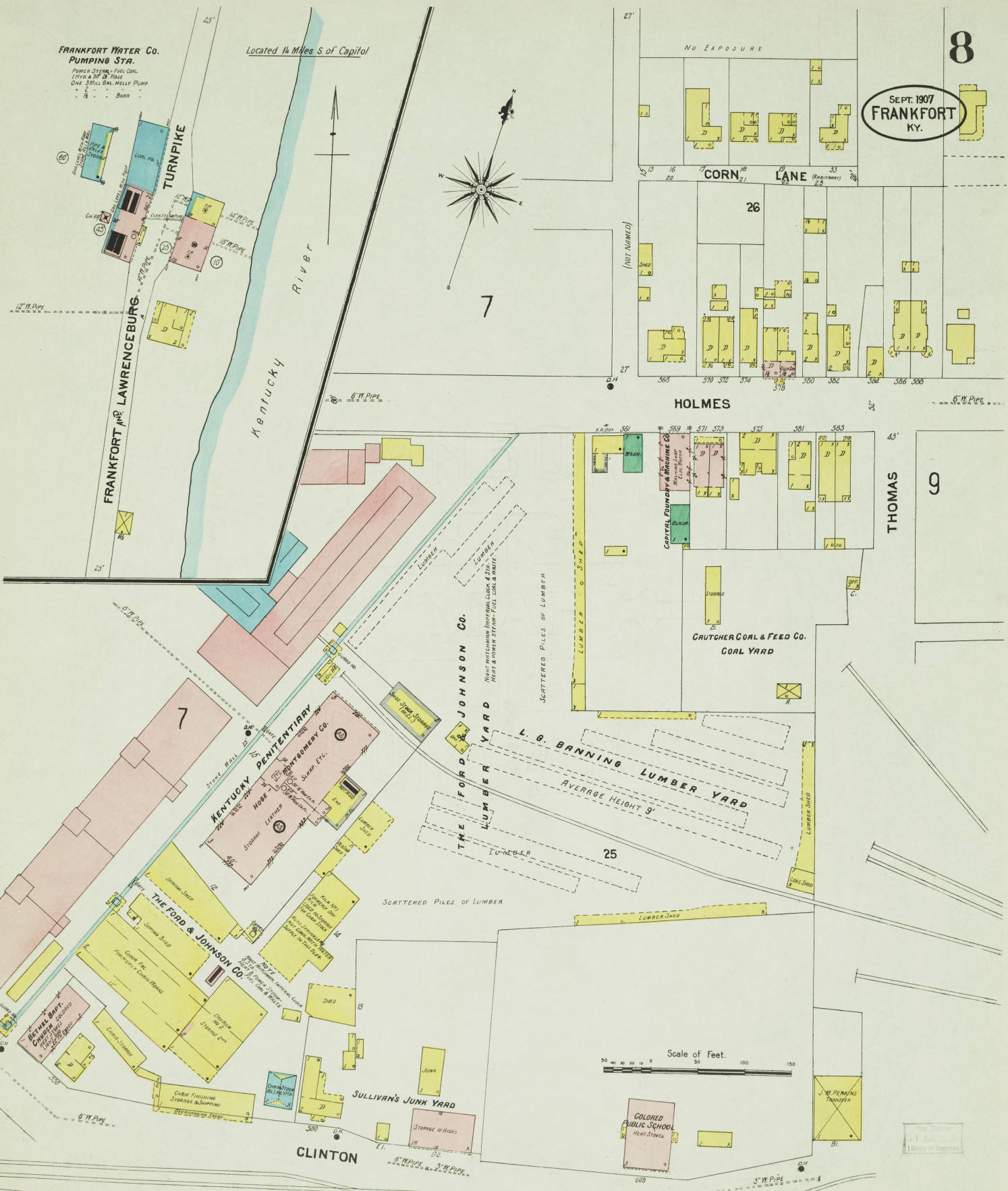
Map No. 1 JUL 1907
Library of Congress

FRANKFORT WATER CO. PUMPING STA.
 POWER SYSTEM - FUEL COAL
 1 Fire & 50' H. Hoist
 One 3000 GAL. HOIST PUMP
 BARR

Located 1/4 Miles S of Capitol

8

SEPT. 1907
FRANKFORT
 KY.



SEPT 1907
FRANKFORT
KY.



10

HOLMES ST. EXT. S.

A 7/8

108

AMERICAN SOCIETY OF EQUITY,
FRANKLIN CO. TOBACCO WARE HO. CO.

HOLMES ST. EXT. N.

108

THE AMERICAN TOBACCO CO.
LEAF TOBACCO WARE HO.
(MAIN CLRD.)

BARRET AV.

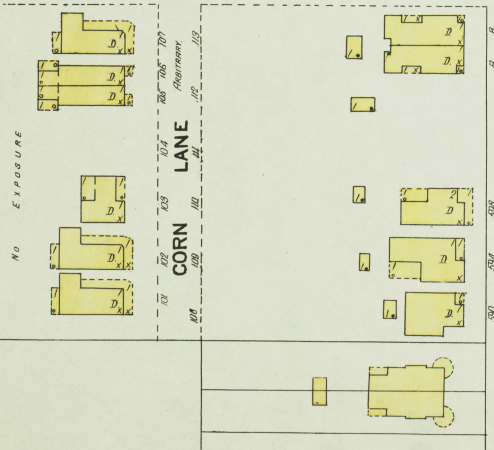
FRANKFORT BROOM CO.
BROOM COGN WARE HO.
SPRINKLED BY CITY WATER AND TRUNK
IN SHOE FACTORY TOWER DRY SYSTEM.
(IRON CLRD.)

HOGG-MONTGOMERY CO.
SHOE FINISHING FACTORY
NIGHT WATCHMEN-BETWEEN CLOCK-8 STATIONS-
ROUNDS AROUND-HEAT INDIRECT STEAM-
POWER SYSTEM AND ELECTRIC-
LIGHTS ELECTRIC-FUEL COAL-DRINKELL PLTD.
SPRINKLING THROUGH WET SYSTEM-FOOD BY
TRUCK IN TOWER AND CITY WATER.
CRACK OF TANK 3000 GAL. ELEV 72' ABOVE
GROUND-FIRE PAILS AND HOSES DISTRIBUTED

STANDARD OIL CO.

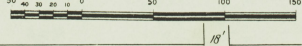
26 NOT NAMED

109



CORN LANE

Scale of Feet.

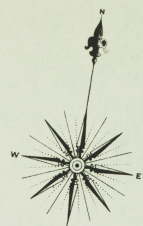


THOMAS

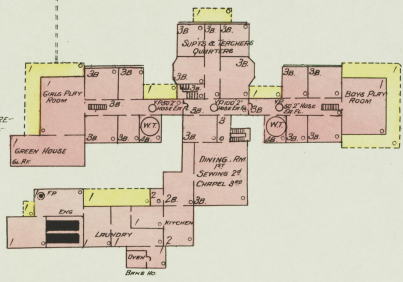
8

F. C. B. Broom Co.
& Broom Shop

THE OFFICE
1 JUL 1908
Library of Congress



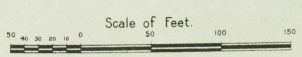
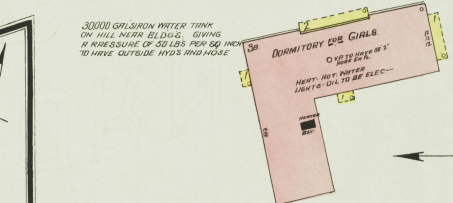
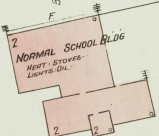
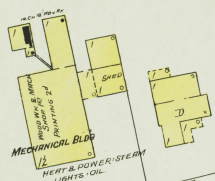
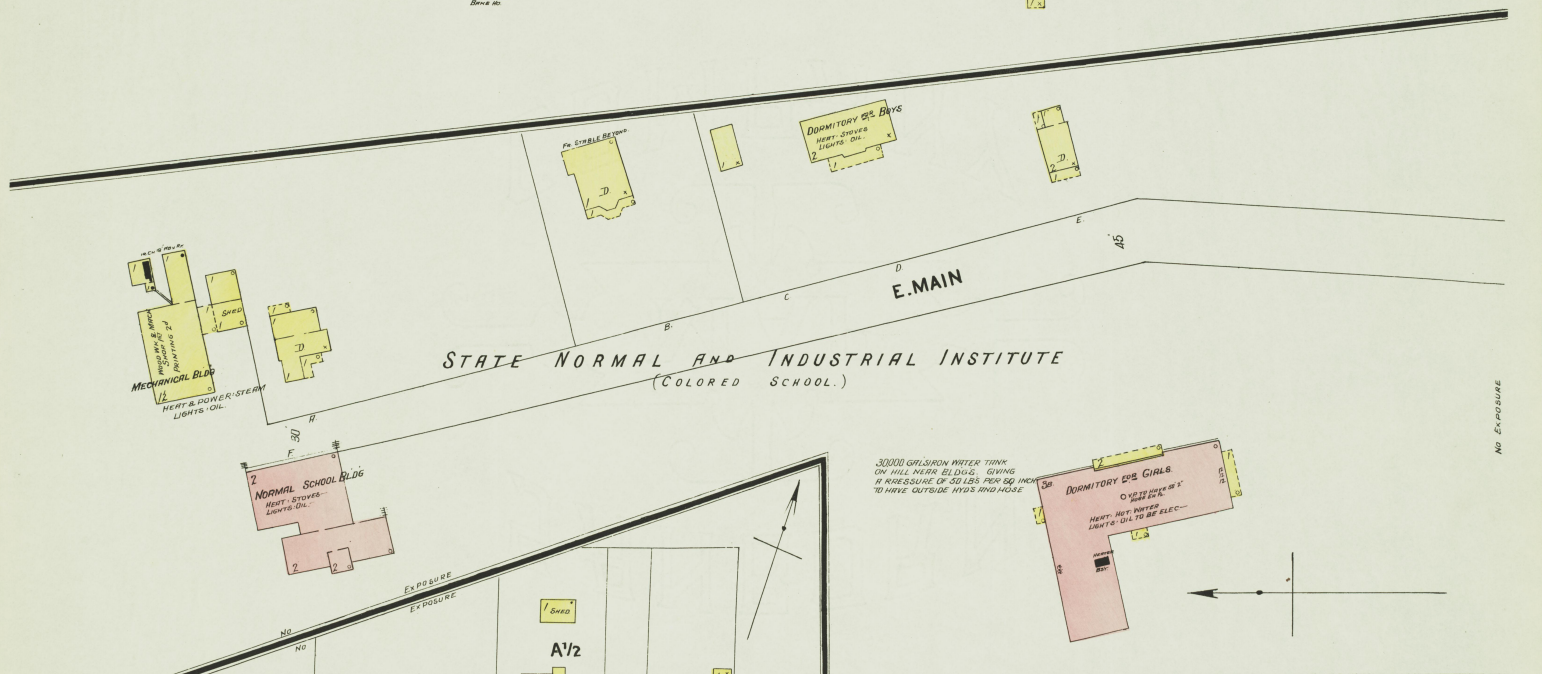
THE KENTUCKY INSTITUTION FOR THE EDUCATION AND TRAINING OF FEEBLE MINDED CHILDREN



ONE INSIDE & ONE OUTSIDE WATCHMAN NO CLOCK—
HEAT STEAM LIGHTS: ELECTRIC FULL: CARS
CITY WATER RUNS TO BUILDING WITHOUT PRESSURE—
PUMPED TO TWO 5000 GAL. WATER TANKS IN TOWER—
BY LINDSAY BURN GORDON P. PIPES CHECK: SEE WEL-
VED MINUTE: Y PIPES & HOSES SKIPPY—
ON FIVE GAL. CISTERN SITS
FOUR LARGE CISTERS ON GROUNDS—



STATE NORMAL AND INDUSTRIAL INSTITUTE
(COLORED SCHOOL.)



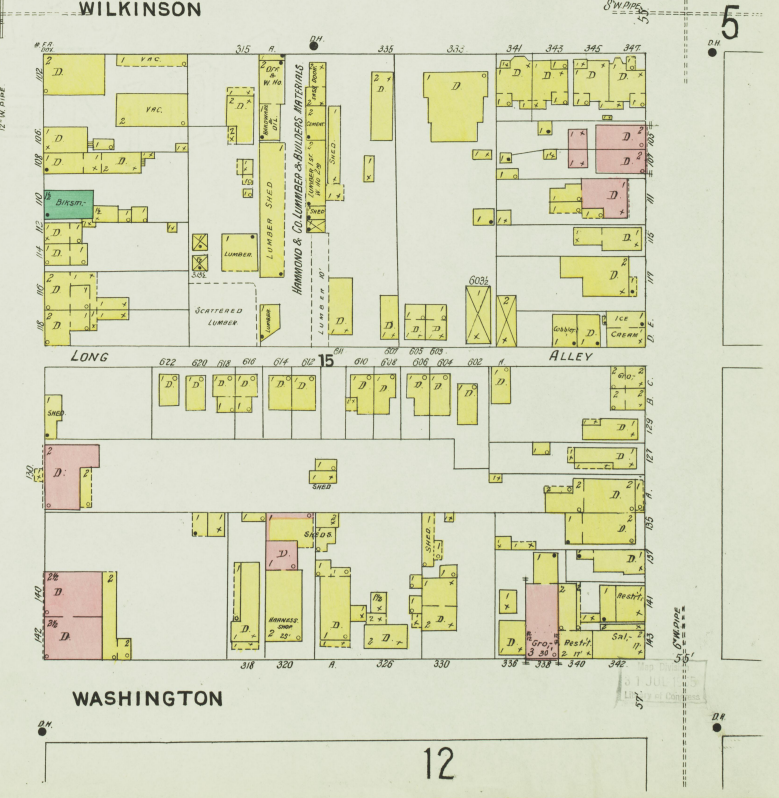
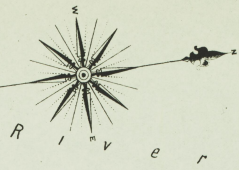
HOLMES ST. EXT. S.

JULY 1907
Library of Congress

K e n t u c k y

SEPT. 1907
FRANKFORT
KY.

11



MERO

ST. CLAIR

ANN

CLINTON

WASHINGTON

MADISON

BROADWAY I. & N. R. R.

Scale of Feet.



13

SEPT. 1907
FRANKFORT
KY.

11

MAIN

14

WAPPING

WILKINSON

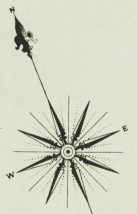
WASHINGTON

55

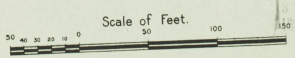
54

30

29



Kentucky River



Map Edition
of JULY 1905
City of Frankfort

48 9-28 07

MADISON ST

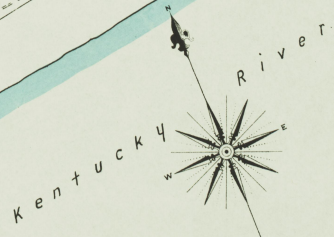
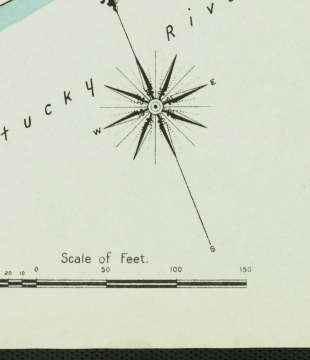
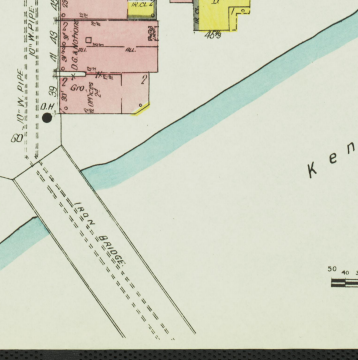
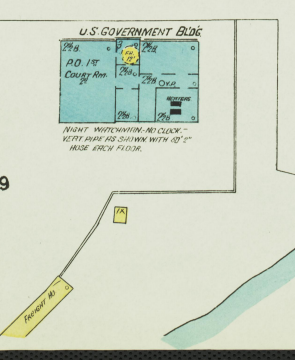
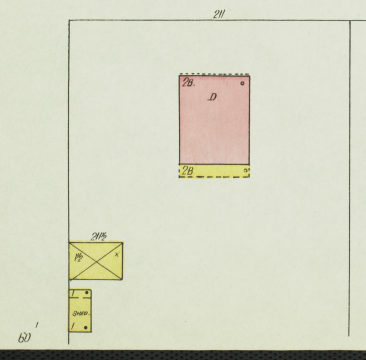
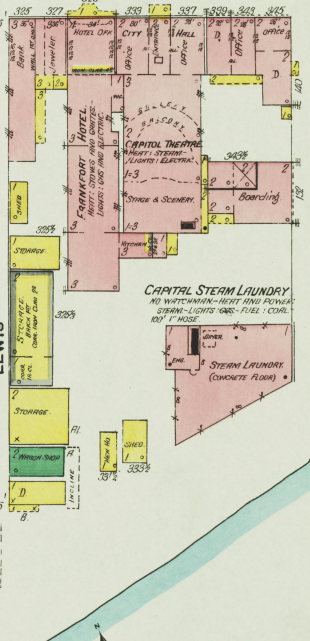
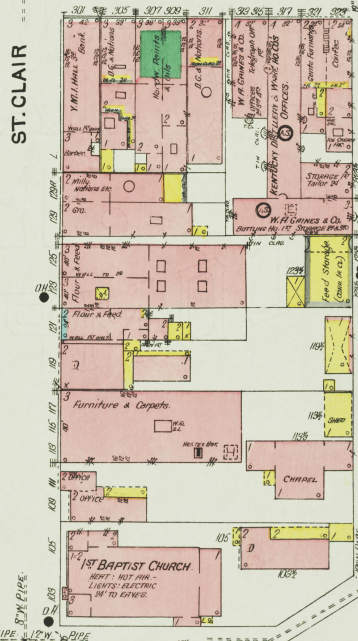
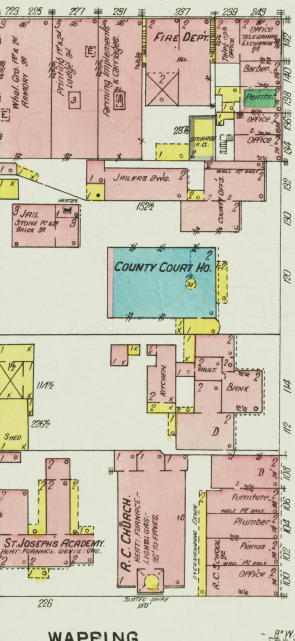
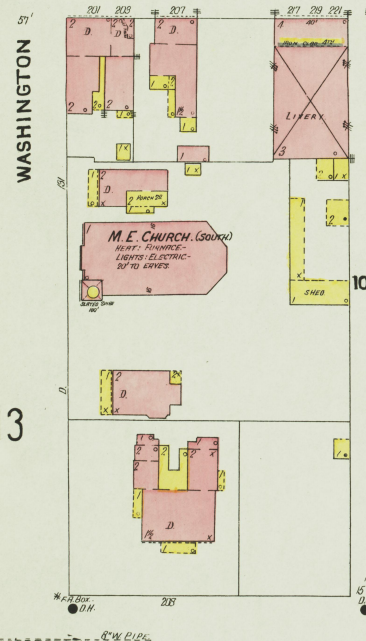
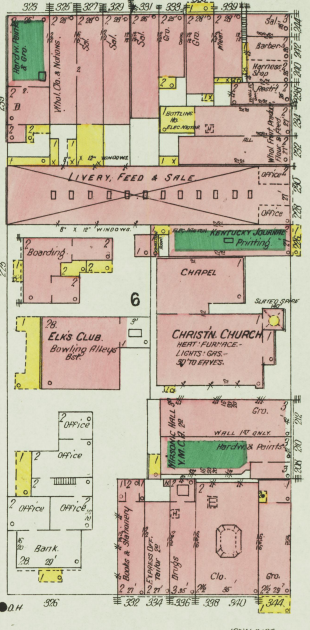
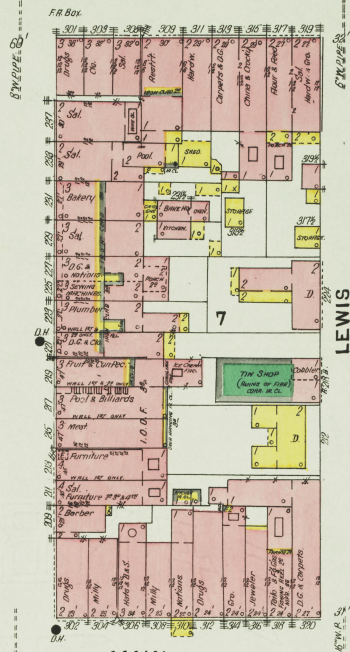
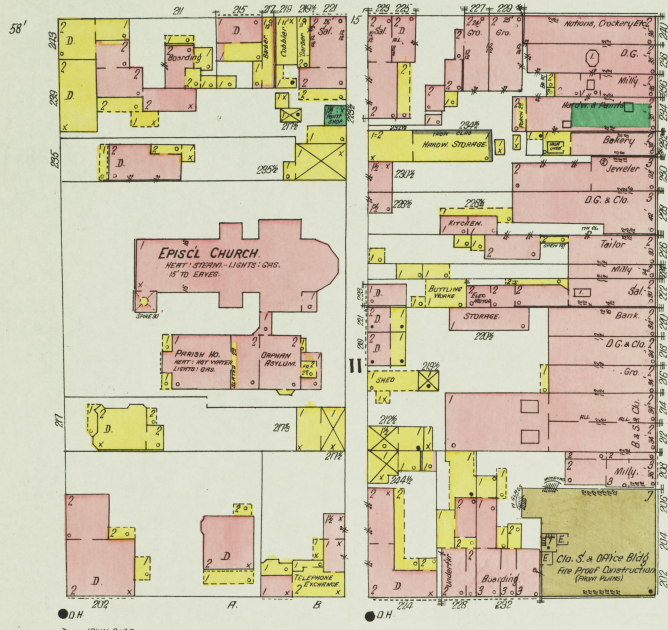
12

14

SEPT. 1907
FRANKFORT
KY.

BROADWAY

L. & N. R.R.



Scale of Feet.
0 50 100 150

Map drawn
J. J. JULY 1907
City of Frankfort



12

14

CLINTON

BROADWAY

HIGH

MAIN

River.

Kentucky

Scale of Feet.
0 10 20 30 40 50 60 70 80 90 100 110 120 130 140 150

Map Made
31 JUL 1908
J. B. Brantley

J. B. Brantley

SEPT. 1907
FRANKFORT
KY.

GEORGETOWN AND VERSAILLES PIKE

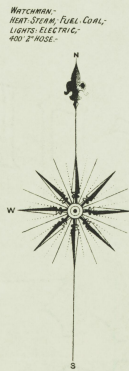
ST.

WORM LANE

E. MAIN

BROADWAY

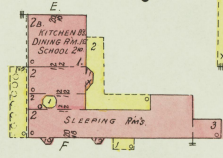
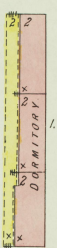
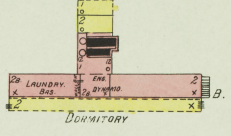
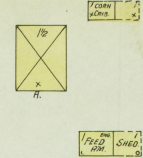
STEWART HOME FOR FEEBLE MINDED



WATCHMAN -
HEAT STEAM, FUEL COAL,
LIGHTS ELECTRIC,
400' E. ROSE.

772
COTTAGE
FOR
PATIENTS

2 STORY BR. 12 STABLE
BEHIND



On Lawrenceburg Pike.
6 Miles S.W. of Frankfort.

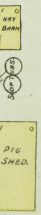
KENTUCKY DISTILLERIES & WARE HO CO.
KNOX J. N. BLAKEMORE-ARNOLD SPRINGS DISTILLERY
Registered Distillery No. 96, 7th Dist. Franklin Co. Ky.

CAPACITY 400 BUSHELS -
BUILT 1890
UNITS: POT STILL & LAMP ON GASOLINE
STEAM HEAT IN WARE HOUSE
PUMP 100' W. WARE

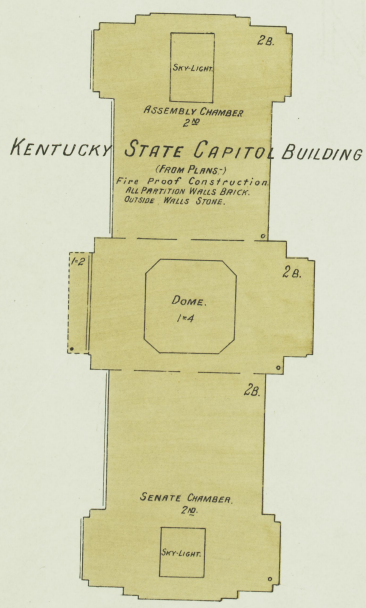
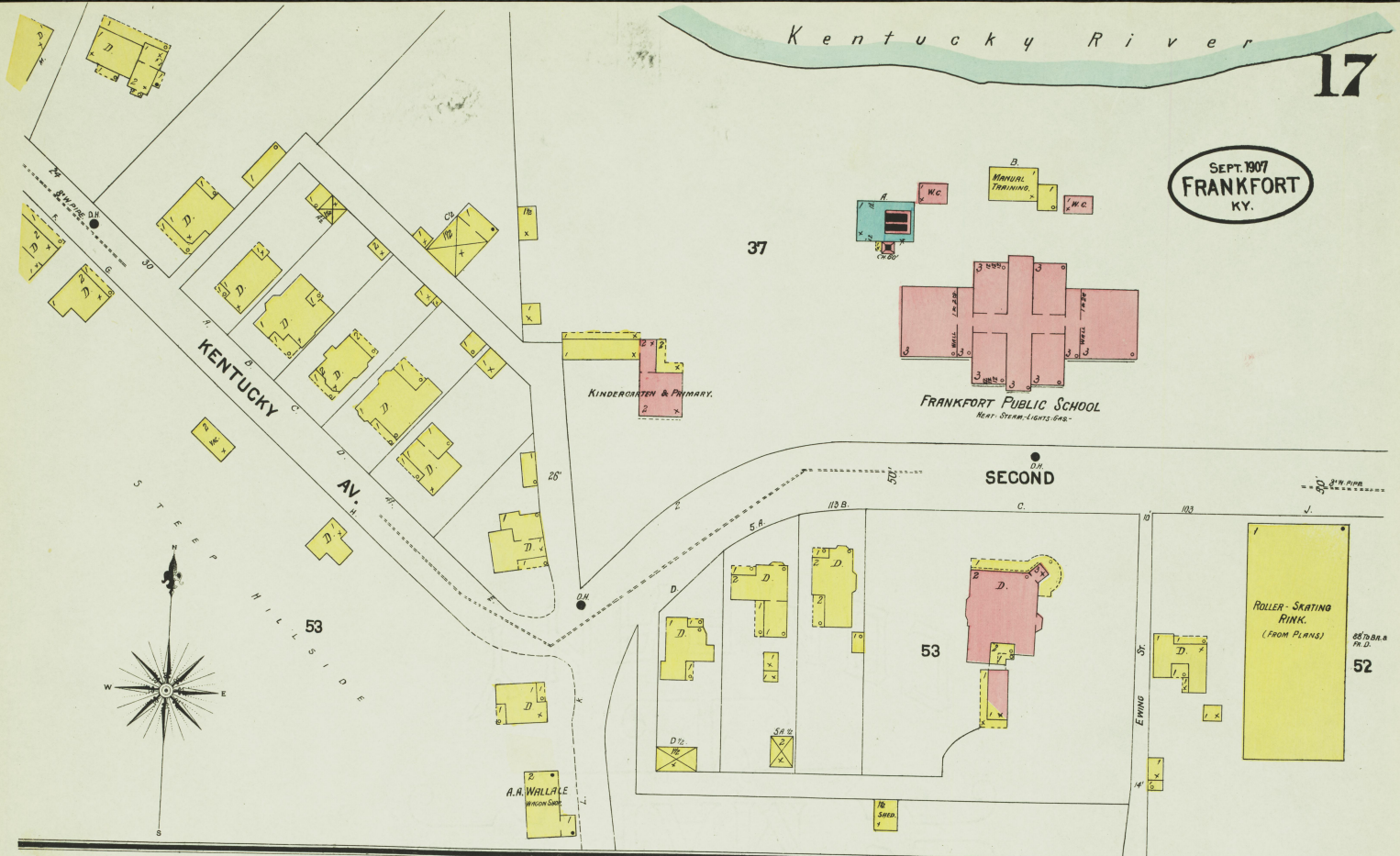


Scale of Feet.
0 50 100 150

Bla Farmdale
8 Miles S.W. of Frankfort

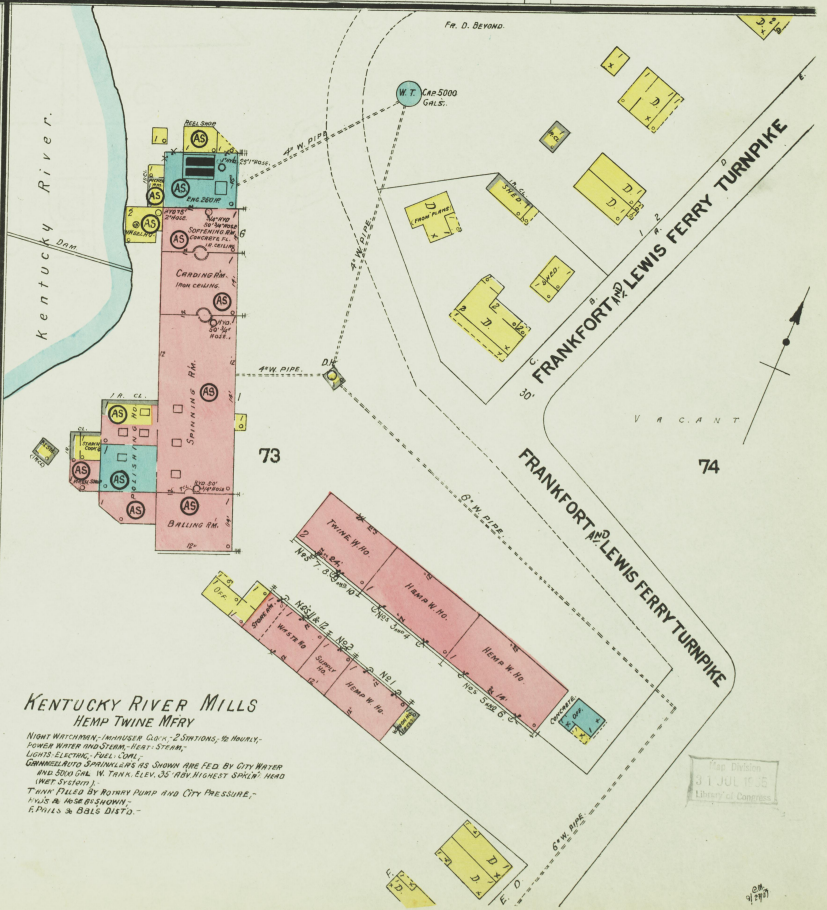


SEPT. 1907
FRANKFORT
KY.



Scale of Feet. 0 50 100 150

POWER HO. TO BE BUILT ON THIS SITE.



KENTUCKY RIVER MILLS
HEMP TWINE MERY

WIGHT WATCHMAN; MACHINERY CAP. 25 HOURS; 50 HOURS;
POWER WATER AND STEAM - HEAT - STEAM;
LIGHTS ELECTRIC; FUEL COAL;
COMMERCIAL SPRING LINES SHOWN ARE FED BY CITY WATER
AND 300 GALS. W. TANK. ELEV. 35' ABV. HIGHEST SPRAIN' HEAD
(WATER SYSTEM).
TANK FILLED BY ROTARY PUMP AND CITY PRESSURE;
PILLS & BALS DISTO.

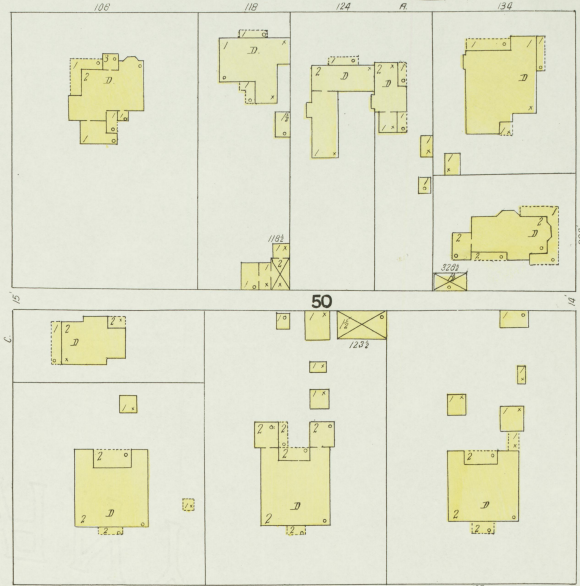
THE DISTRICT OF COLUMBIA
JULY 1908
LIBRARY OF CONGRESS

19

18

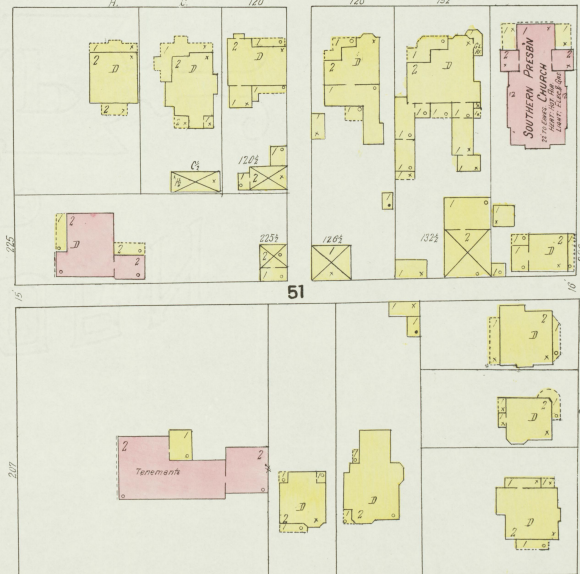
SEPT. 1907
FRANKFORT
KY.

SHELBY



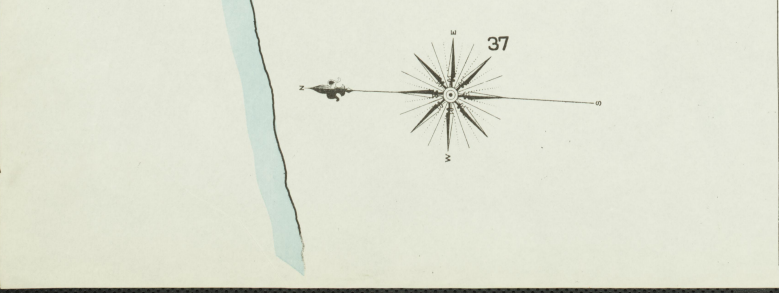
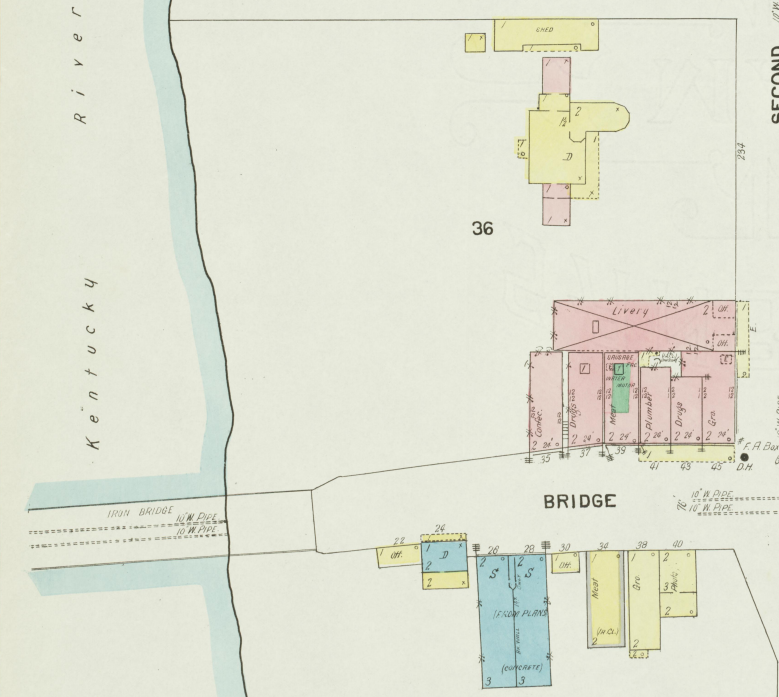
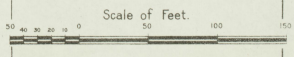
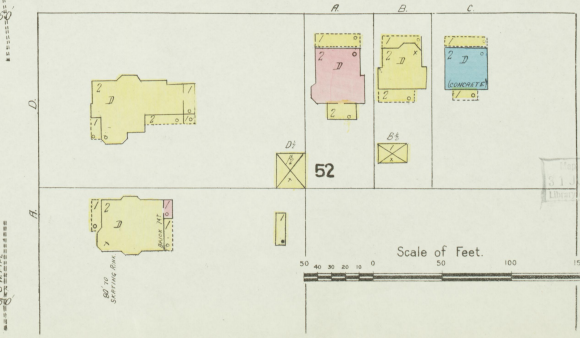
22

STEEL



THIRD

CONWAY

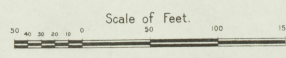
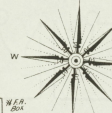
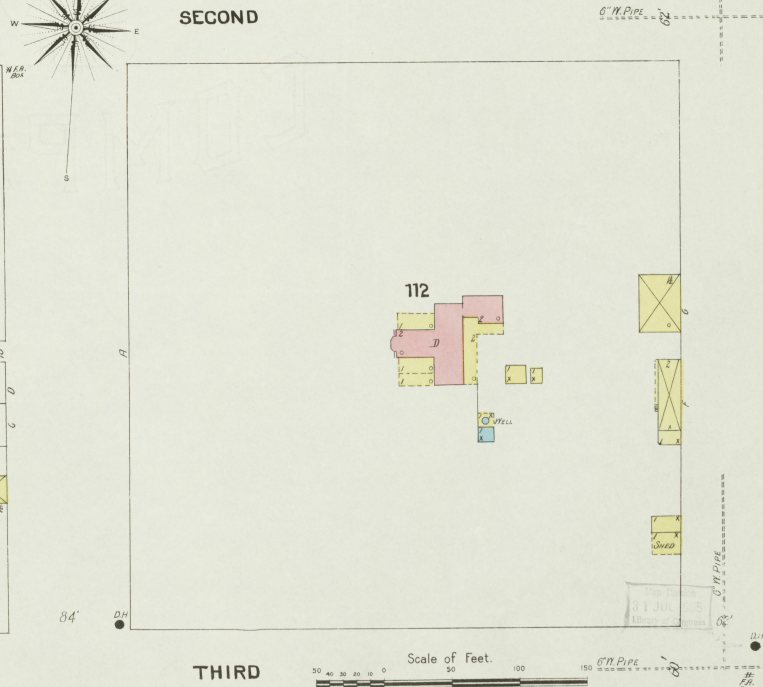
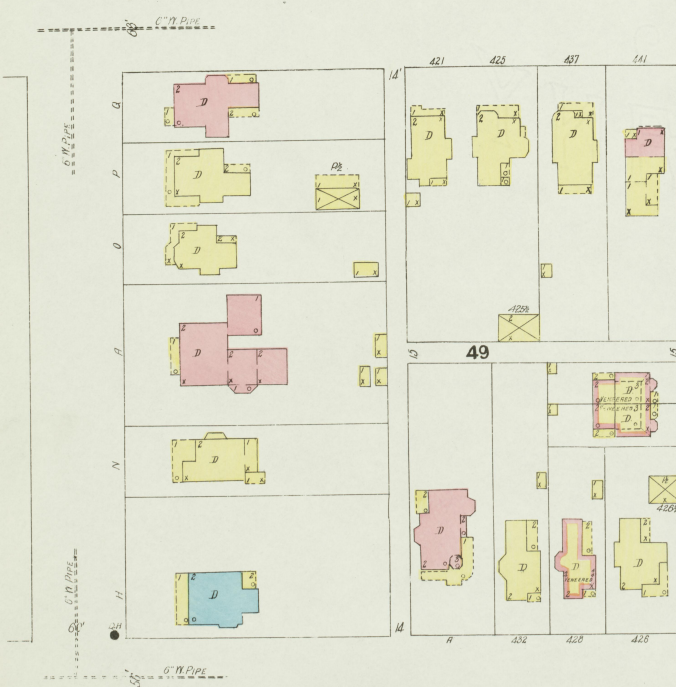
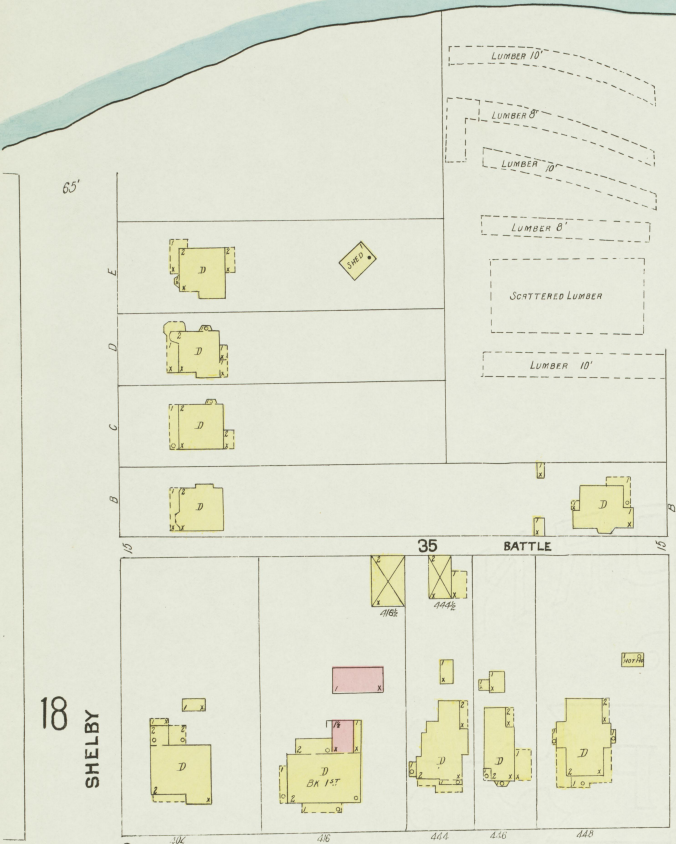
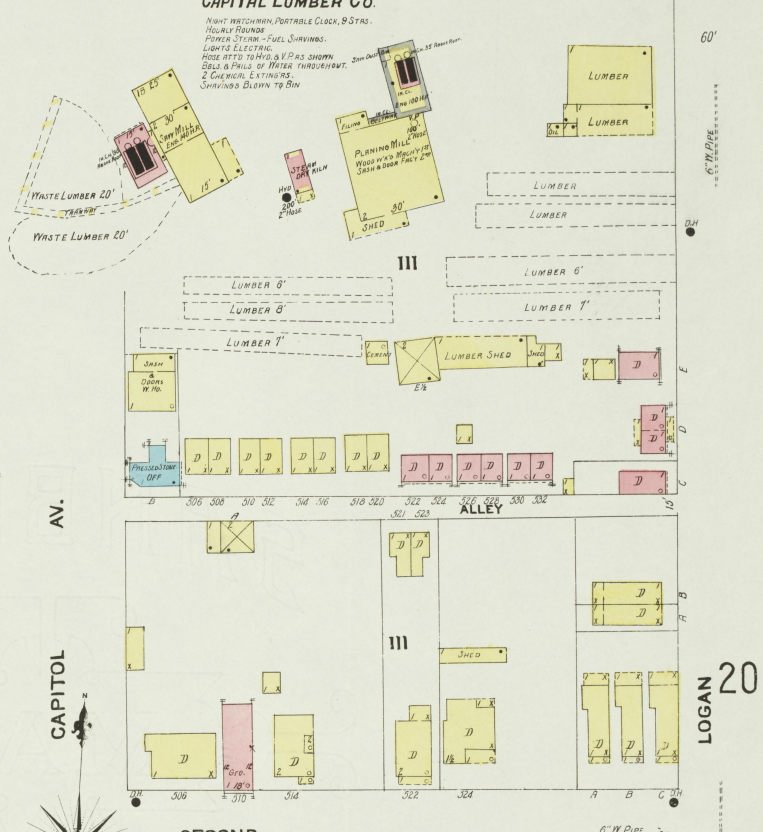


Kentucky River

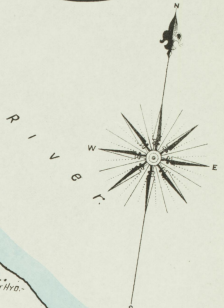


CAPITAL LUMBER CO.

WANT WATCHMAN PORTABLE CLOCK, 9 STKS.
HIGHT FOUND
POWER STEAM - FUEL SURVINGS.
LIGHTS ELECTRIC
HOSE SETS 10 HIG. & V.P.S. SHOWN
BELLS & PHALS OF WATER THROUGHOUT.
2 CONCRETE EXTERIORS.
SHRIVINGS BLOWN TO BIN.



SEPT. 1907
FRANKFORT
KY.



KENTUCKY RIVER POPLAR CO.
NIGHT WATCHMAN, NEWMAN, CATTLEBEE
CLACK - 9 STATIONS, FIVE EACH, PRODUCT
OF LUMBER IN BOTH BARS, CUMBERBEE,
FUEL-WASTE, NO HEAT, NO LIGHTS.

H.C. PILKINGTON PLANING MILL.
NIGHT WATCHMAN, 40 CUMBERBEE, 40 FIVE,
NO HEAT, NO LIGHTS.

MURRAY

LOGAN

SECOND

21

THIRD

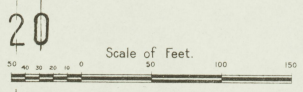
LOGAN

MURRAY

FOURTH

AV.

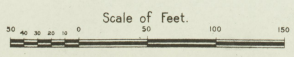
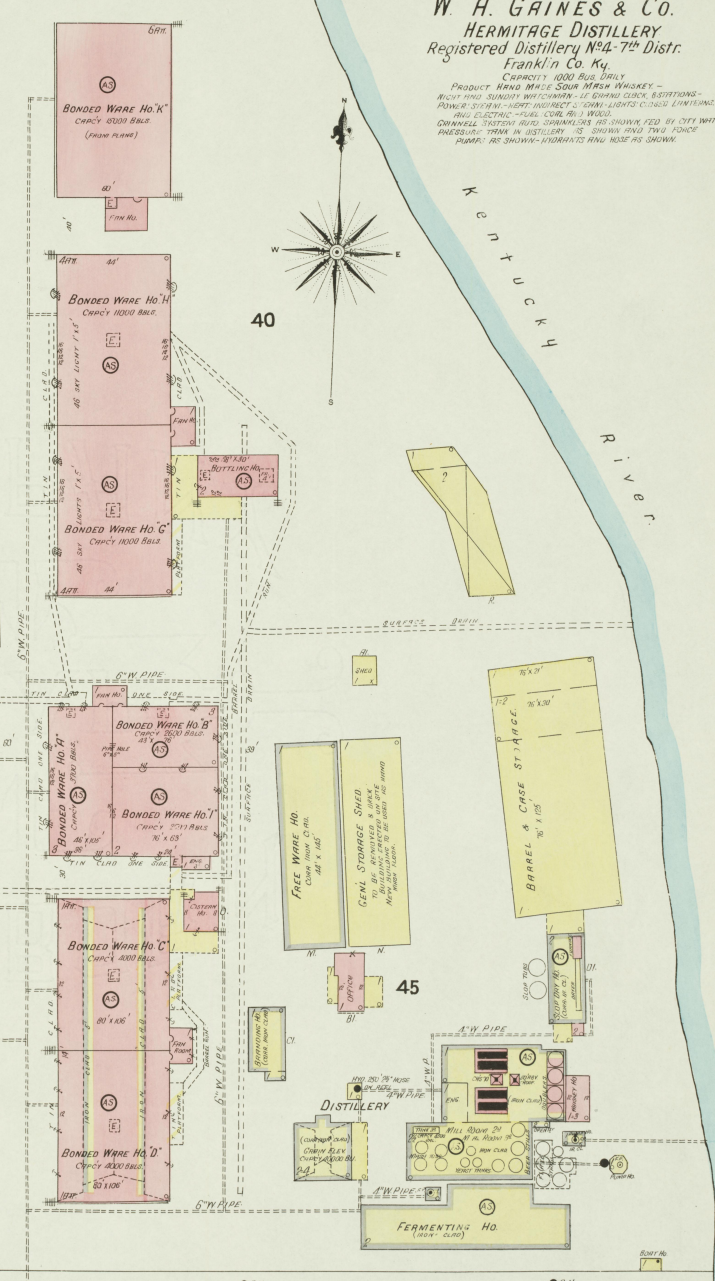
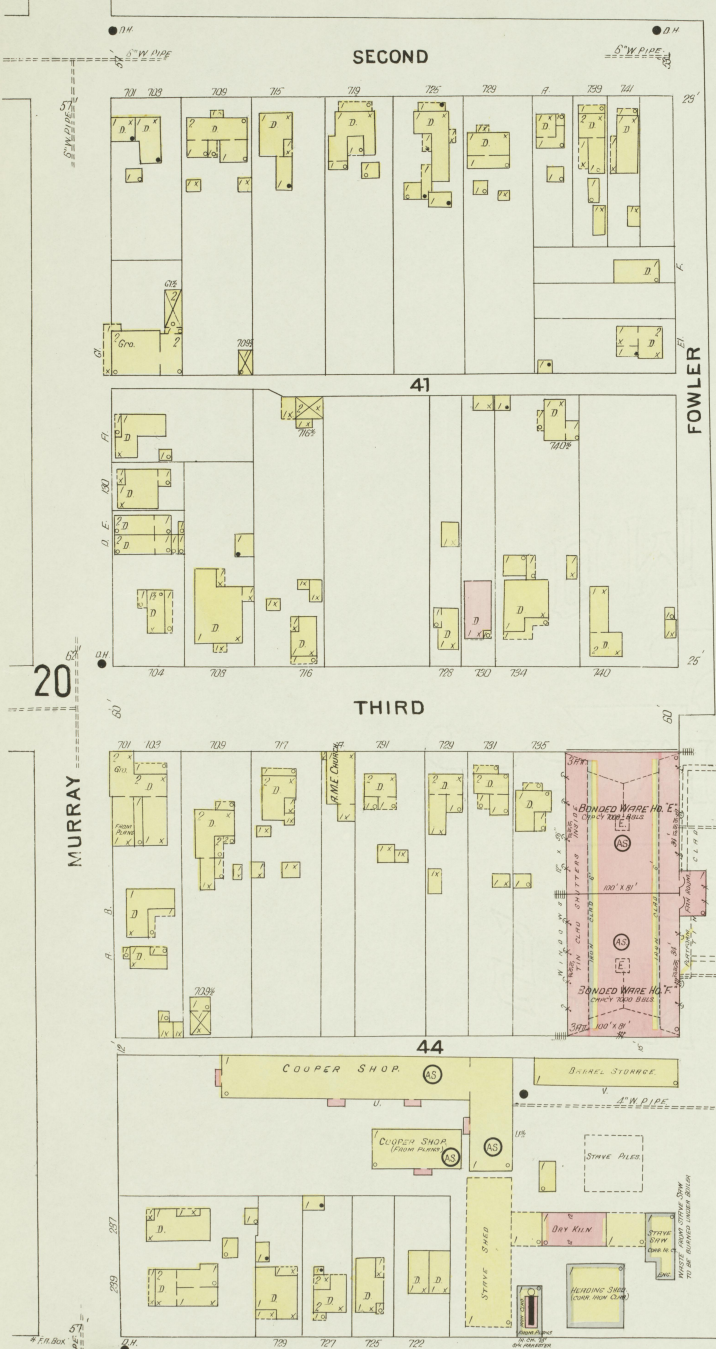
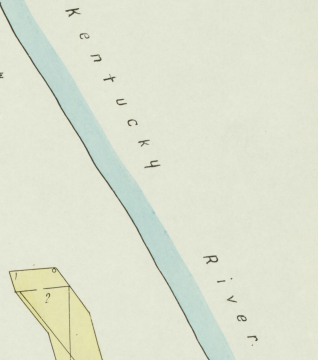
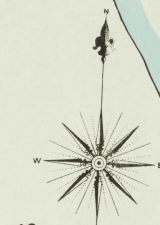
24



SEPT. 1907
FRANKFORT
KY.

W. A. GAINES & Co.
HERMITAGE DISTILLERY
Registered Distillery No. 4-7th Distr.
Franklin Co. Ky.

CAPACITY 1000 BBL. DAILY
PRODUCT HAND MADE SOUR MASH WHISKEY -
MASH AND SUNDRY WATCHMAN - LE. GRIND. CLOCK. BATTERIES -
PUMPS. COOKERY. WARE. INSURANCE. CO. COOK. LUGGERS. CLOSURE. LIGHTING -
AND ELECTRIC - FUEL. COAL. AND WOOD.
CONCRETE. STONE. BRICK. LUMBER. ETC. AS SHOWN. FED BY CITY WATER -
PRESSURE. TRANK IN DISTILLERY IS SHOWN AND TWO INCH
PIPING. AS SHOWN. HYDRANTS AND HOSE AS SHOWN.

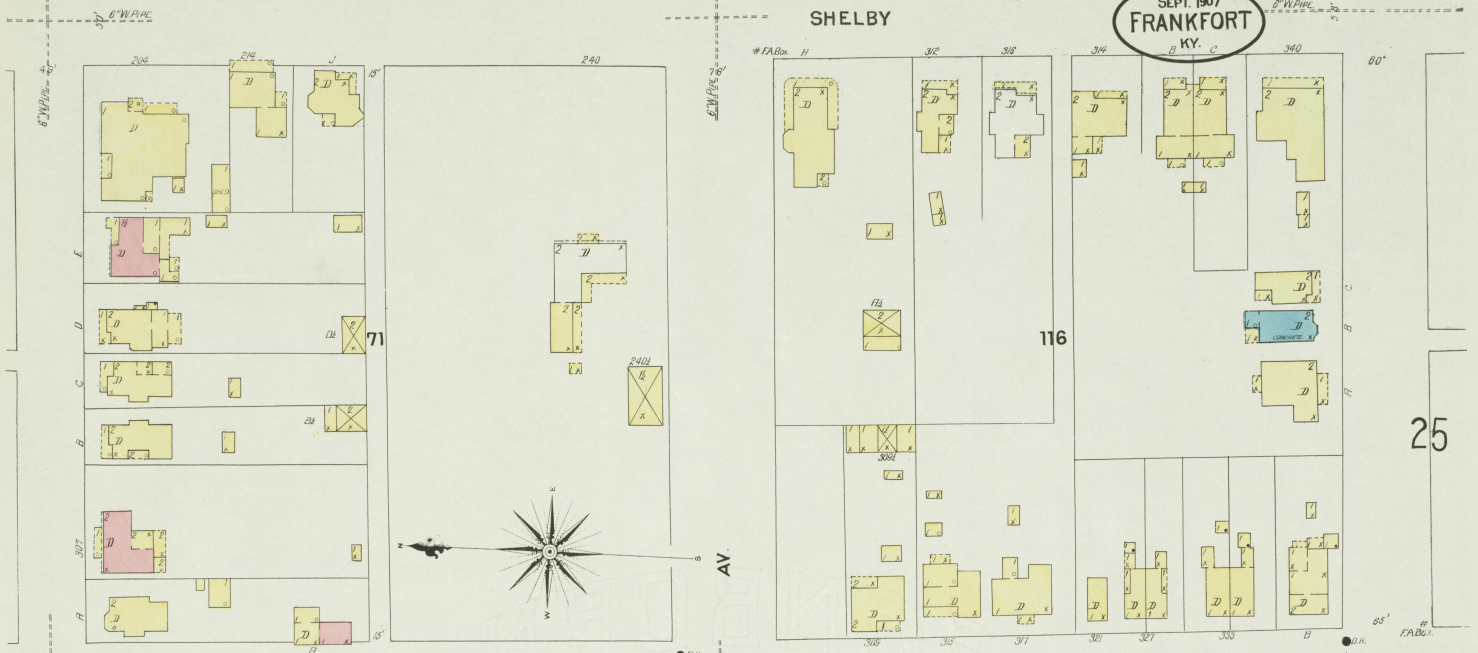


23

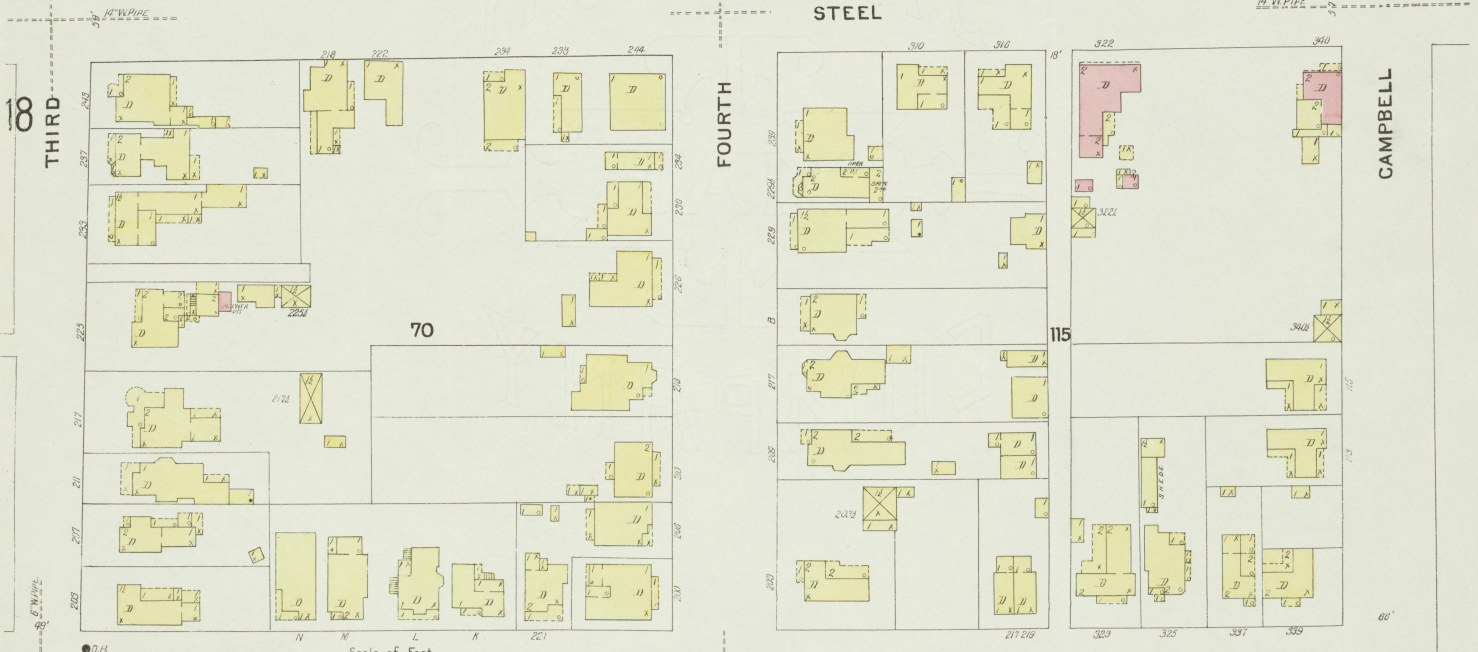
22

SHELBY

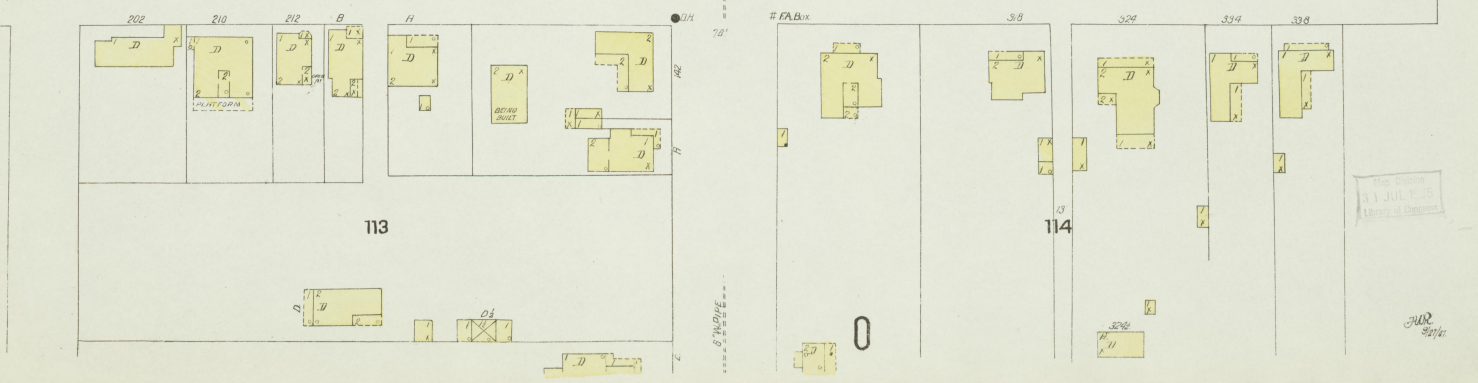
SEPT. 1907
FRANKFORT
KY.



STEEL



CONWAY

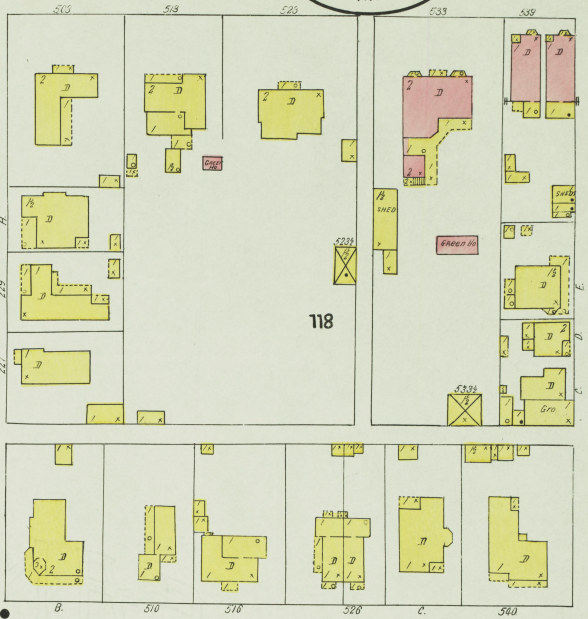


This Building
31 JUL 1935
Library of Congress

W.R.
Sept.

SEPT 1907
FRANKFORT
KY.

THIRD

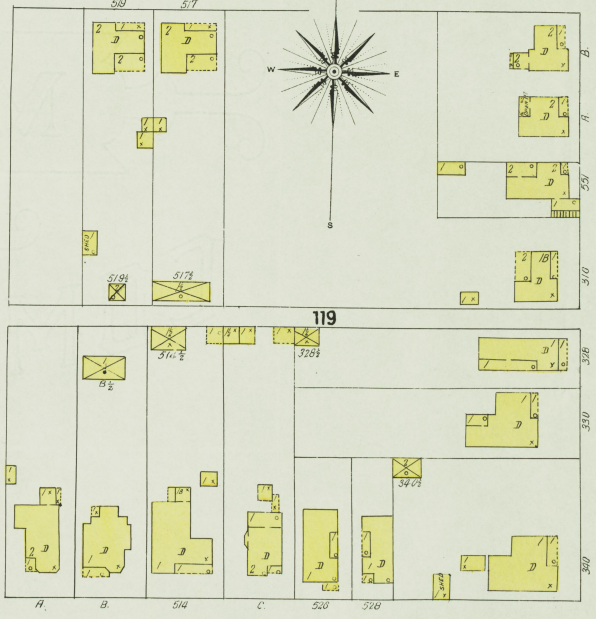


AV.

FOURTH AV.

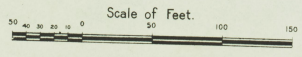
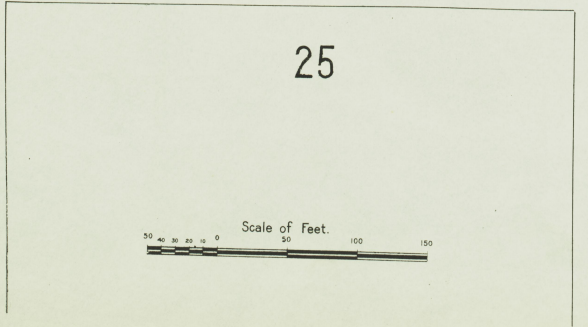
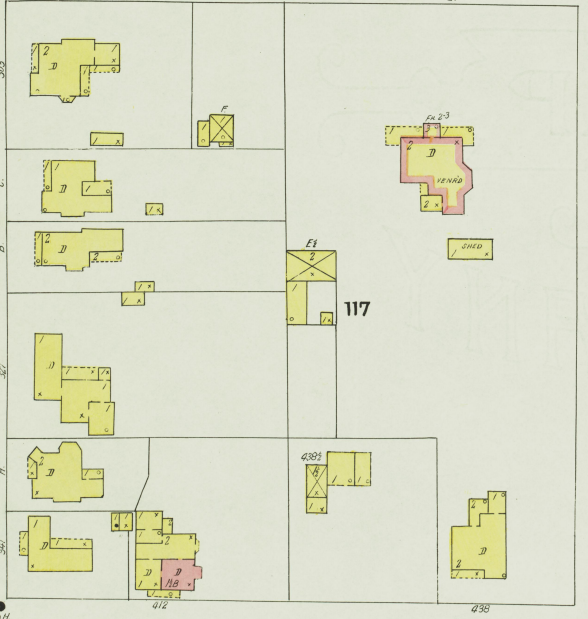
CAPITOL

LOGAN



CAMPBELL

SHELBY

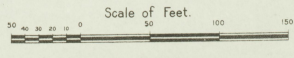
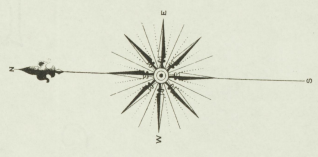


THE DISTRICT OF COLUMBIA
JULY 1908
OFFICE OF THE COMMISSIONER OF DISTRICT ENGINEERING

SEPT. 1907
FRANKFORT
KY.

Kentucky
River

FORD & JOHNSON LUMBER CO.
PLANT



26

FOWLER

47

MURRAY

21
AV.

FOURTH

20

CAMPBELL

23

LOGAN

27

123

121

124

122

48



23

27

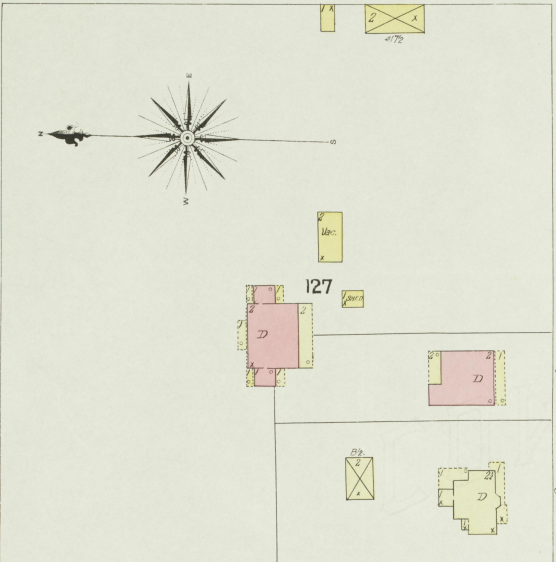
25

CAPITOL AV.

CAPITOL AV.

SEPT. 1907
FRANKFORT
KY.

23



SHELBY

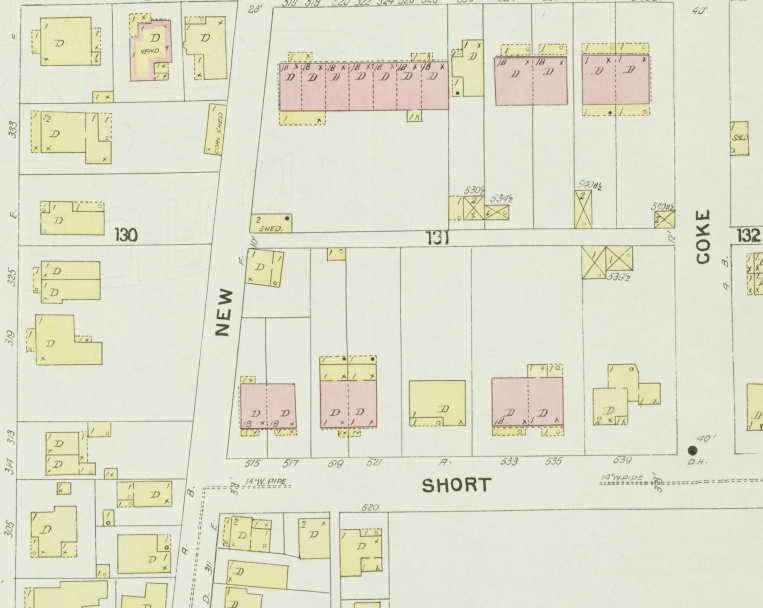
CAMPBELL

TODD

NEW

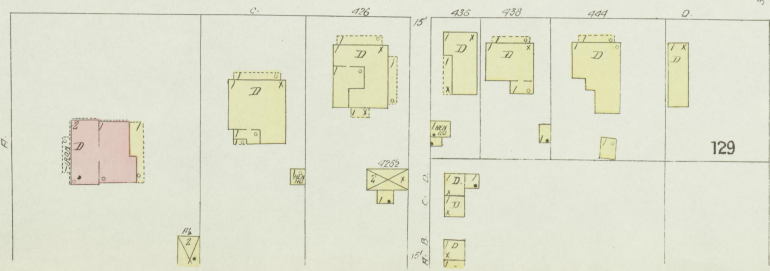
COKE

22



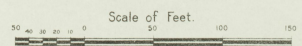
STEEL

SHORT



NO EXPOSURE

The State
of KY.
JUL 1907
Library of Congress



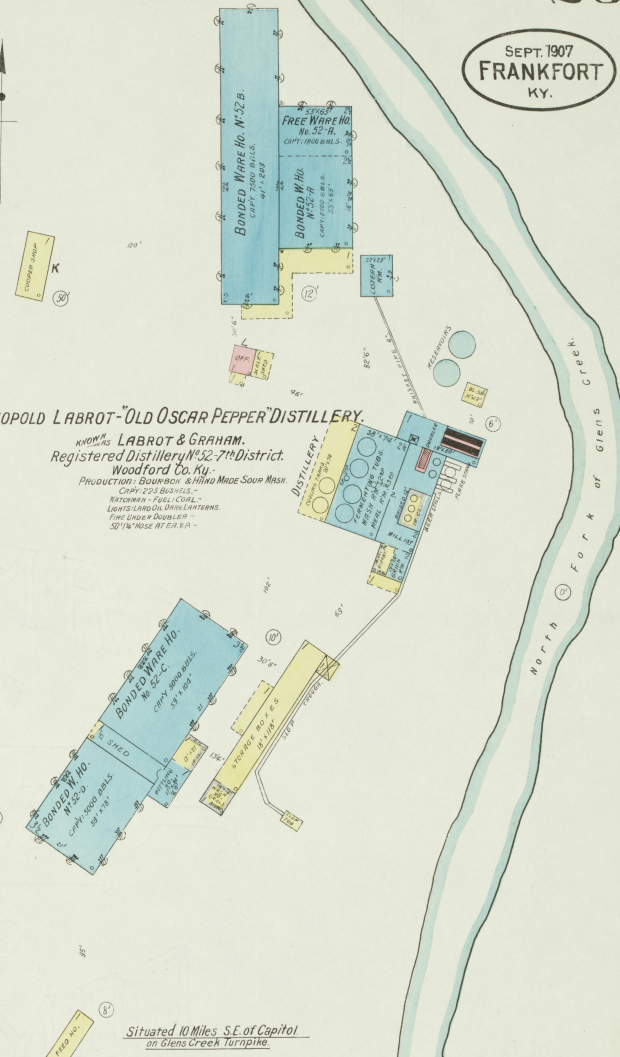
SEPT. 1907
FRANKFORT
KY.



LEOPOLD LABROT-OLD OSCAR PEPPER DISTILLERY

KNOWN AS LABROT & GRAHAM.
Registered Distillery No. 52-7th District.
Woodford Co. Ky.

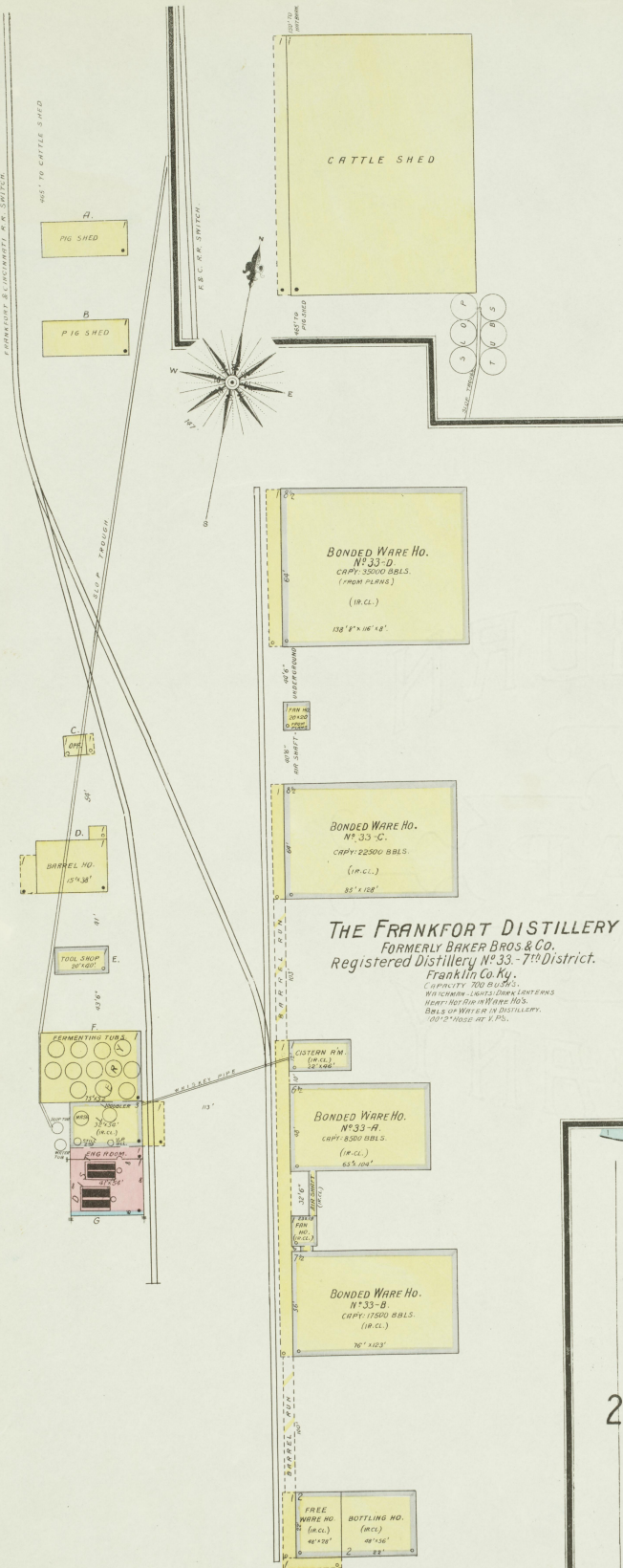
PRODUCTION: DOWN-BOW & HIND MADE SOUP WASH
CAPY: 250 BUSHELS -
MICHENERY - FILL COIL -
LIGHTS - LEAD OIL - BRASS LANTERNS
FINE SUGAR - BARBERS
50 1/2" ROSE AT 1/4 V.A.



Situated 10 Miles S.E. of Capitol
on Glens Creek Turnpike.

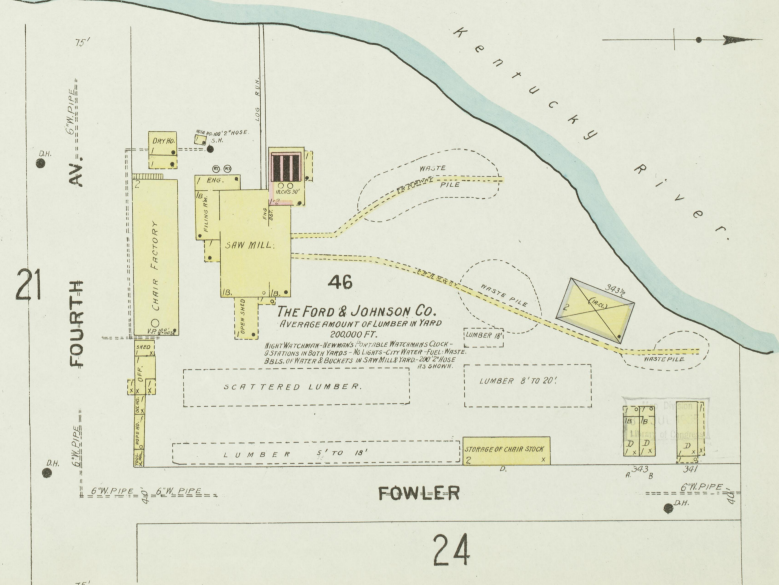
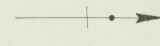
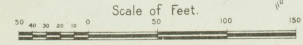
THE FRANKFORT DISTILLERY
FORMERLY BAKER BROS & Co.
Registered Distillery No. 33-7th District.
Franklin Co. Ky.

CAPACITY: 700 BUSHELS
WAS SCREW - LEAD OIL - LANTERNS
HERE: NO RISE IN WARE HO'S
DIES IS ON WARE HO IN DISTILLERY.
100 1/2" ROSE AT 1/4 V.P.



4 Miles E. of Frankfort on Georgetown Pike.
1 Mile West Junction N.E.S. Elkhorn Creek.
Situated on Practically Level Ground.

Scale of Feet.



THE FORD & JOHNSON CO.

AVERAGE AMOUNT OF LUMBER IN YARD
200000 FT.

BEAST WASTE CARBON-BY PRODUCTS - FERTILIZABLE WASTE - WASTE CHUCKS -
5 1/2" DIES IN SHOP - TRAMPERS - NO LANTERNS - COIL - WATER - BRASS -
DIES IN WATER & BUCKETS OF SAW MILL - 1000 - 1000 - 1000 -
NO WAREHOUSES

21

FOURTH AV.

FOWLER

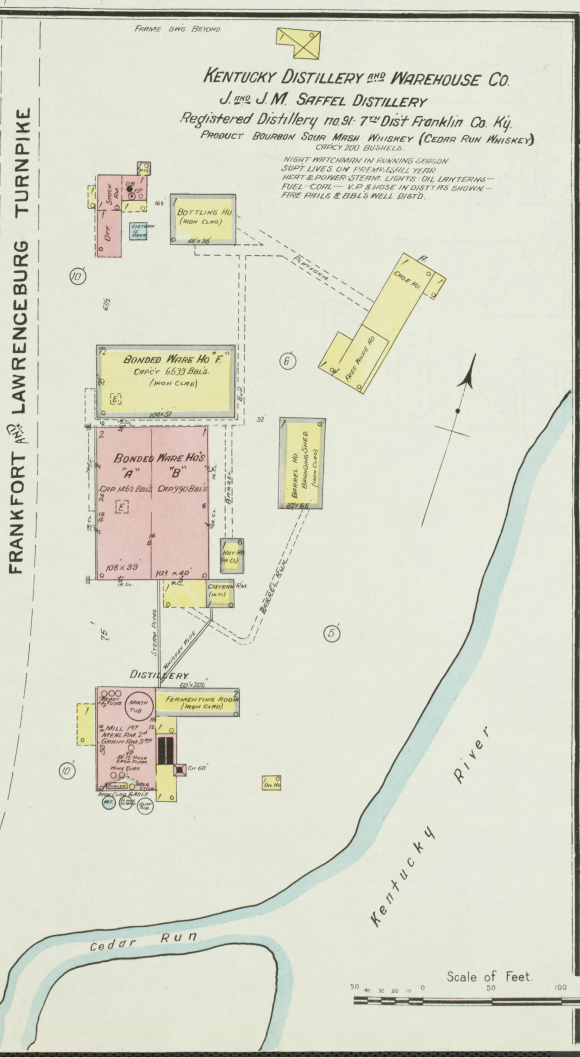
24

SEPT. 1907
FRANKFORT
KY.

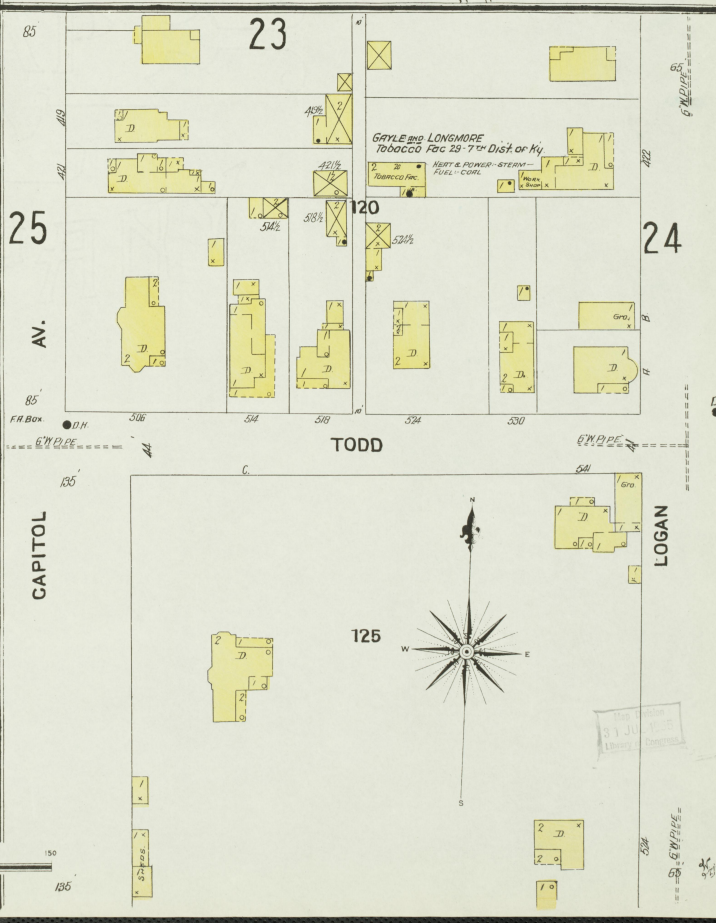


J. R. SHAW & CO. GRAIN ELEVATOR
 NO WITCH MEN, NO LIGHT - NO HEAT
 RYDED CARBOLINE, NO FIVE ATON
 MACHINERY
 ONE CORN MILL -
 ONE CORN SHELLER -
 ONE CORN HELL -
 ONE CORN CLEANER -
 ONE METAL BOLT -

at JETTS KY
 Located 5 Miles E. of Frankfort



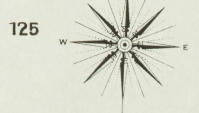
KENTUCKY DISTILLERY AND WAREHOUSE CO.
 J. and J. M. SAFFEL DISTILLERY
 Registered Distillery no. 17 7th Dist Franklin Co. Ky.
 Product BOURBON SOUV. MASH WHISKEY (CEDAR RUN WHISKEY)
 CAPACITY 200 BUSHELS
 NIGHT WATCHMAN IN RUNNING SEASON
 SUPT. LIVES ON PREMISES ALL YEAR
 HEAT & POWER - STEAM - LIGHTS - GAS - LANTERNS -
 FUEL - COAL - W.P. ENGINE IN DIST. HAS SAWMILL
 FIRE PAILS & BOG'S WELL DISTD.



GATLE and LONGMORE
 Tobacco Fac 29-7th Dist of Ky
 HEAT & POWER - STEAM -
 FUEL - COAL

TODD

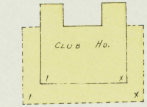
LOGAN



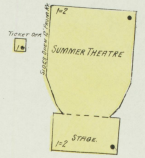
Scale of Feet.
 0 25 50 100 150

SEPT. 1907
FRANKFORT
KY.

OWENTON PIKE

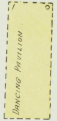


FRANKFORT COUNTRY CLUB.



GLENWOOD PARK
LIGHTS, ELEC., GAS PIPES &
BRANCHED TO THEATRE.

136



FRANKFORT CANNING CO.
CANNING FACTORY.

Notes: REFRIGERATOR IN BUILDING; STEAM - NO CLOCK.
PART & POWER SYSTEM; LIGHTS BY LAMPERS.
FUEL OIL - 50' HOSE.

F. & C. R.R.

No Exposure

No Exposure

133

134

135

CROW

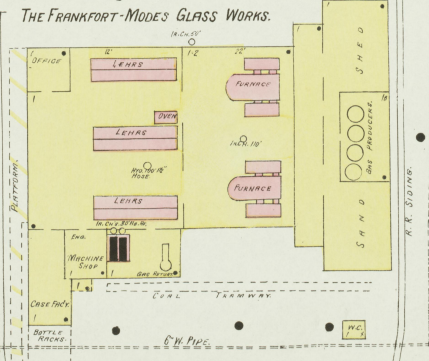
OWENTON PIKE

28

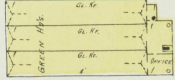
GLENWOOD PARK

136

THE FRANKFORT-MODES GLASS WORKS.



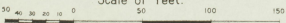
A.C. HENRY GREEN HOUSES.



OWENTON PIKE

Notes: MATCHES COMMON TO HAVE NEARBY CASH IS STATIONS.
POWER STEAM; LIGHTS ELEC.; FUEL OIL; SIGNS; TENS' 1100.
AS SHOWN ARE SUPPLIED BY 6" MAIN FROM LEVINE NATIONAL
RESERVE. BY BILL, ONE WILL 2.50 FACTORY; DIVING PRESSURE
OF ABOUT 30 LBS. 1 1/2 SQUARE INCH. TWO HOSE CHITS WITH 100'
2" HOSE. EA.

Scale of Feet.



THE GEO. T. STAGG CO. DISTILLERY

Also known as **CARLISLE DISTILLERY**
NEW YORK & KENTUCKY CO.
FORMERLY **CARLISLE DISTILLERY**

KENTUCKY RIVER DISTILLERY, REGISTERED No. 2, 7th District.
O.F.C. DISTILLERY, REGISTERED No. 113, Franklin Co. Ky.
TOTAL DAILY CAPY: 1800 BUS.

BOAT RICHMOND WATER CLOCK 7.30 P.M.
POWER & HEAT: STEAM; LIGHTS: ELECTRIC; BOILER ROOMS:
FUEL: COAL - K.P. & HOSE AS SHOWN IN DISTILLERY.

Located 1 1/2 Miles N. of Capitol.

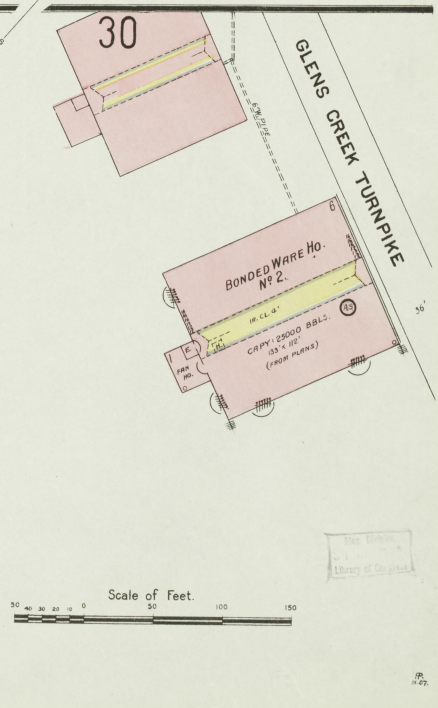
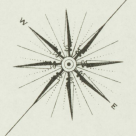


W. A. GAINES & CO.
OLD GROW DISTILLERY
Registered Distillery No. 106.
7th District.
WOODFORD CO. KY.
CAPY. 100 BUSH PER ANNUM.
NEAT MATCHES. PRIMER COCK - 8 STATIONS -
HEAT POWER STEAM - LIGHTS ELEC. & ROCKET MOLS -
FUEL. COAL & WOOD - FIRE PUMP. BILLS. OILY -
CORNELL SYSTEM # 170. SPARKERS AS SHOWN -
FEW 3 1/2 5000 GAL. RESERVOIR & 2500 GAL. TANK
OF 11 1/2" ABOVE. HIGHEST SPARKER HEAD -
RISO 2 LARGE DRAIN PUMPS -

Situated 3 1/2 Miles S.E. of Capitol.



GLENS CREEK TURNPIKE



Scale of Feet.
0 50 100 150