

**WATER FACILITIES:**  
Stand pipe system. Water pumped from creek 1/2 miles E. of Court Ho. into stand pipe 1/2 mile E. of Court Ho. Size 10" dia. cap. 25,500 gals. 2 Jeannette Pumps cap. each 7500 gals. 24 hours. Water Works 3000' x 3000' w/ 8000' x 4000' and add 1/2' lead in 1892-38 Double Hydrants. Pressure at fire station 35 lbs.

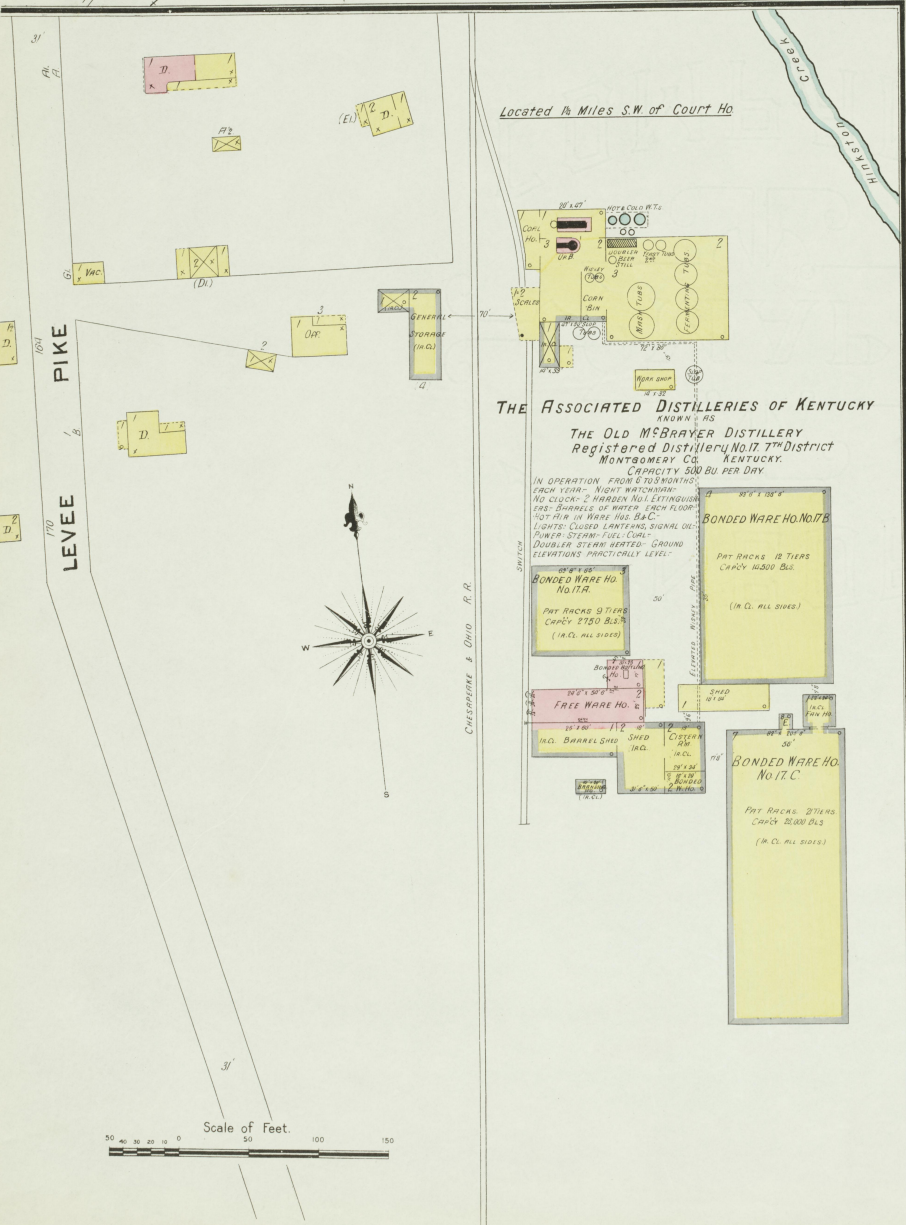
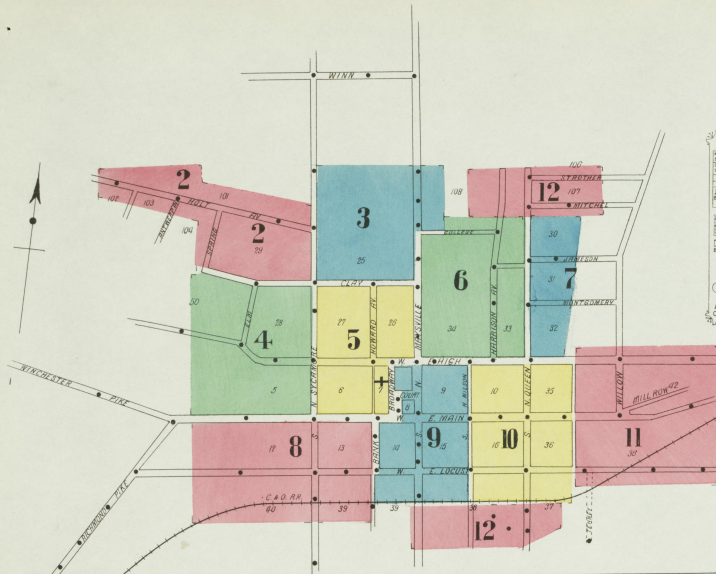
**FIRE DEPT:**  
Volunteer 18 men-2 paid men. Horses-2 hand hose, 1 hose wagon, 1000' of good rubber hose-1 one horse H.A.L. truck, 250' of leaders. 21 alarm given by telephone sounded by bell on tower of Engine No. 1 Steam Fire Engine.

**KEY**

- FIRE WALL IN ASB ROOF
- METAL ROOF
- ROOF CORRUGATED
- ROOF WALL IN ASB ROOF
- FRAME PARTITION
- OPENING WITH ROOF LOGS
- IRON DOOR
- WINDOW 8' HIGH
- WINDOW 12' HIGH
- WINDOW 14' HIGH
- WINDOW 16' HIGH
- WINDOW 18' HIGH
- WINDOW 20' HIGH
- WINDOW 22' HIGH
- WINDOW 24' HIGH
- WINDOW 26' HIGH
- WINDOW 28' HIGH
- WINDOW 30' HIGH
- WINDOW 32' HIGH
- WINDOW 34' HIGH
- WINDOW 36' HIGH
- WINDOW 38' HIGH
- WINDOW 40' HIGH
- WINDOW 42' HIGH
- WINDOW 44' HIGH
- WINDOW 46' HIGH
- WINDOW 48' HIGH
- WINDOW 50' HIGH
- WINDOW 52' HIGH
- WINDOW 54' HIGH
- WINDOW 56' HIGH
- WINDOW 58' HIGH
- WINDOW 60' HIGH
- WINDOW 62' HIGH
- WINDOW 64' HIGH
- WINDOW 66' HIGH
- WINDOW 68' HIGH
- WINDOW 70' HIGH
- WINDOW 72' HIGH
- WINDOW 74' HIGH
- WINDOW 76' HIGH
- WINDOW 78' HIGH
- WINDOW 80' HIGH
- WINDOW 82' HIGH
- WINDOW 84' HIGH
- WINDOW 86' HIGH
- WINDOW 88' HIGH
- WINDOW 90' HIGH
- WINDOW 92' HIGH
- WINDOW 94' HIGH
- WINDOW 96' HIGH
- WINDOW 98' HIGH
- WINDOW 100' HIGH



16028  
16029  
16030  
16031  
16032  
16033  
16034  
16035  
16036  
16037  
16038  
16039  
16040  
16041  
16042  
16043  
16044  
16045  
16046  
16047  
16048  
16049  
16050  
16051  
16052  
16053  
16054  
16055  
16056  
16057  
16058  
16059  
16060  
16061  
16062  
16063  
16064  
16065  
16066  
16067  
16068  
16069  
16070  
16071  
16072  
16073  
16074  
16075  
16076  
16077  
16078  
16079  
16080  
16081  
16082  
16083  
16084  
16085  
16086  
16087  
16088  
16089  
16090  
16091  
16092  
16093  
16094  
16095  
16096  
16097  
16098  
16099  
16100



**INDEX**

STREETS		W	
Antwerp Ave.	2	Wilson N.	1-101 *10
Bank	1-121 *9	" "	2-100 *9
Broadway	2-122 *8	" "	1-59 *10
	3-4-70 *4	" "	2-60 *9
Clay	1-31 *3	<b>SPECIALS</b>	
"	2-32 *3	<b>A</b>	
"	3-33 *3	American Tobacco Co., Warehouse	9
College	3-4-70 *4	Assoc'd Distillers of Ky. McBrayer Dist'y	1
Elm	1-30 4	<b>B</b>	
Harrison Ave	6 & 12	Baptist Church	5
High E.	1-39 *6	Basmont Hotel	9
"	2-18 *9	Borts, W., Warehouse	9
"	3-50 *10	<b>C</b>	
"	41-49 *7	C. & O. R. R. Freight & Pass'y Station	9
"	52-123 11	Christian Church	5
"	55-28 *9	(Negro)	6
"	59-128 5	Clay & Kirkpatrick, Tobacco Wareh's	8 & 10
"	62-124 4	Chmax Mill Co.	11
Holt Ave	1-90 2	County Court House	9
Howard Ave	1-26 5	<b>D</b>	
Ice	1-29-122 4	District School, Clay Street	2
Jameson	1-27 *3	" High "	6
Levee Pike	1 & 2	<b>E</b>	
Locust E.	1-32 9	Enoch Manufacturing Co.	6
"	53-148 10	Epicopal Church	5
"	149-200 11	Estlin & Owings, Coal	11
"	1-48 9	Evergreen Baptist Church (Negro)	10
"	49-206 8	<b>F</b>	
Main E.	1-60 9	Fire Department	5
"	61-140 10	First Presbyterian Church	8
"	141-170 11	<b>G</b>	
"	1-18 9	Hall, P. G. Machine Shop	9
"	20-32 *8	Home Steam Laundry	9
"	21-127 *8	<b>H</b>	
"	34-206 *8	Indian Creek Coal & Feed Co.	8
"	129-211 *4	<b>I</b>	
"	1-10 9	Kennedy J. Flour Mill	11
Maysville N.	1-10 9	Kentucky Blue Grass Seed Co.	10
"	11-59 *9	" Dust Absorbent Co.	9
"	12-136 *8	<b>J</b>	
"	61-185 *6	McCormick Lumber Co.	12
"	138-184 *3	McDonald Bros. Coal & Feed	9
"	156-215 3	M. E. Church South	10
"	1-100 9	(Negro)	10
Mill Row	1-11 11	Monarch Milling Co.	9
Mitchell	1-12 12	Moore & Scott, Coal & Feed	9
Montgomery	1-7 7	Mt. Sterling Collegiate Institute	8
Owingsville Pike	11	" Floral Co.	1
Pleasant Alley N.	5	" Water, Light & Ice Co.	7
Queen N.	1-20 10	<b>K</b>	
"	21-67 *7	National Hotel	9
"	22-86 *6	Negro School	10
"	68-121 12	<b>L</b>	
"	1-48 10	Old McBrayer Distillery	1
"	49-120 12	<b>M</b>	
Spring	2	Petry, C. H., Hay & Grain	8
Struther	1-39 *4	Pioneer Building	9
Sycamore	1-39 *4	Public School, College Street	9
"	2-38 *4	<b>N</b>	
"	40-70 *2	St. Patrick's Catholic Church	5
"	41-51 *3	Senior, H. W., Carriage Works	5
"	8	South Presbyterian Church	5
"	8	Standard Oil Co.	11
"	8	Star Planing Mill Co.	7
"	8	Stephens House	9
"	8	Sterling Machine Shop	9
"	8	<b>O</b>	
"	8	Tipton Bottling Works	9
"	8	<b>P</b>	
"	8	<b>Q</b>	
"	8	<b>R</b>	
"	8	<b>S</b>	
"	8	<b>T</b>	

NOTE - Indicates only one side of street shown.

JAN. 1908  
MT. STERLING  
KY.

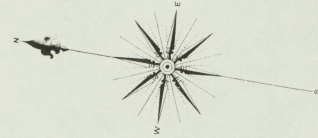


Scale of Feet.  
0 50 100 150

JAN. 1908  
MT. STERLING  
KY.

6

COLLEGE



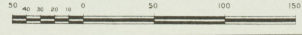
N. MAYSVILLE

25'

25

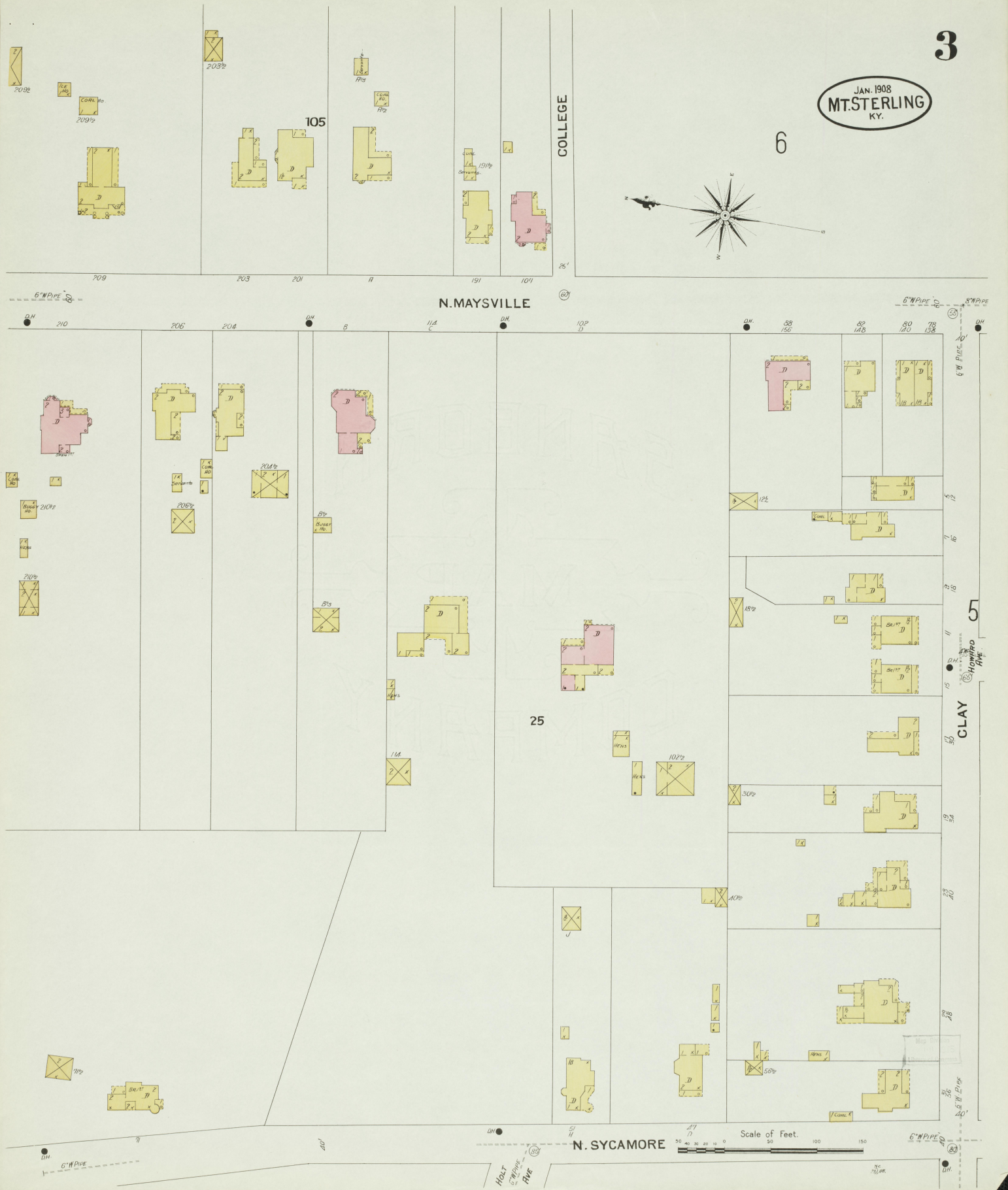
N. SYCAMORE

Scale of Feet.



5

CLAY



2

CLAY

ELM

W. HIGH

28

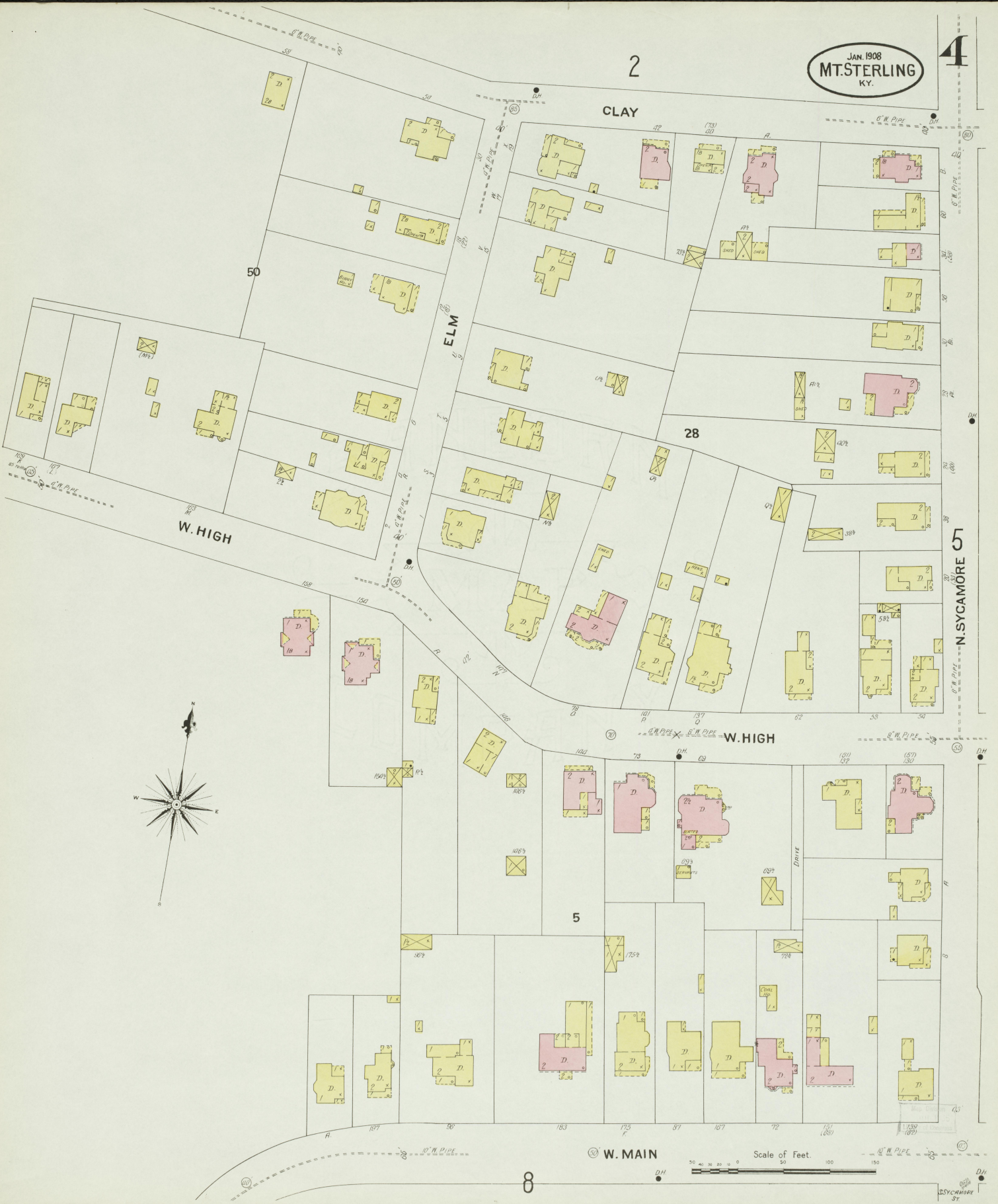
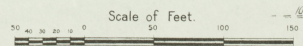
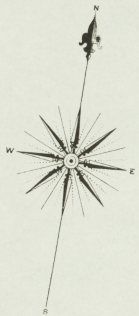
N. SYCAMORE

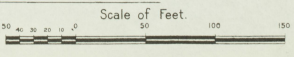
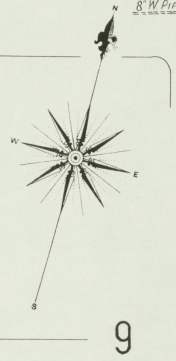
W. HIGH

5

W. MAIN

8





S. SYCAMORE ST.

BANK ST.

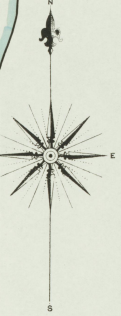
8

9



JAN 1908  
MT. STERLING  
KY.

LOCATED 3/4 MILE S.W. OF COURT HO



PIKE  
LEVEE

SCATTERED LUMBER

STAR PLANING MILL CO.

Mt. Sterling Water Light & Ice Co.  
WATER WHEEL, SHAW, 7500 GAL.  
WATER PUMP, E. I. C. LIGHT, POWER STEAM

Reservoir

Scale of Feet  
0 50 100 150

12

30

JAMESON

31

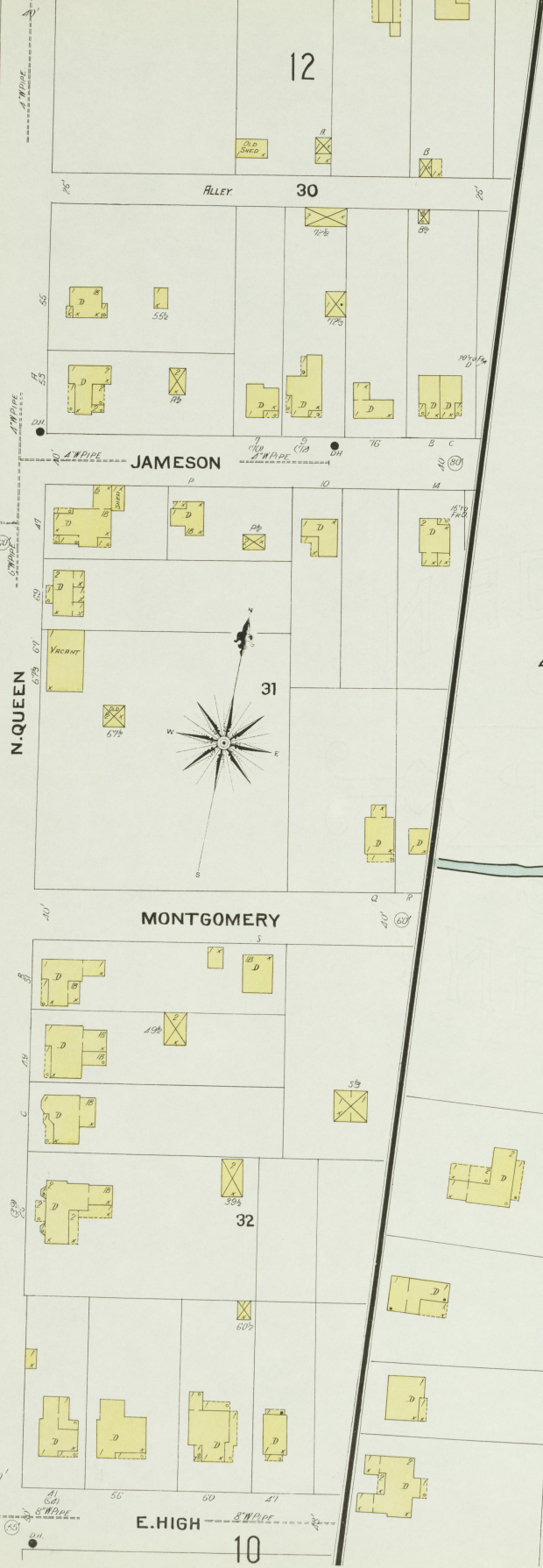
MONTGOMERY

32

E. HIGH  
10

43

44



6

JAN. 1908  
MT. STERLING  
KY.

8

BANK

9

5

W. MAIN

W. LOCUST

4

S. SYCAMORE

40

CLAY & KIRKPATRICK  
HAY & GRAIN  
W. HO.

C. H. PETRY  
HAY & GRAIN  
W. HO.

INDIAN CREEK COAL & FEED CO.

MOORE & SCOTT  
COAL & FEED.

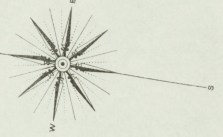
ROCKETT & MURPHY  
LIVERY

ST. PRESBYN  
CHURCH  
WEDGES BACK  
LIGHTS ON  
- 1875

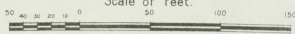


CHERRYPINE & OHIO R. R.

HINDSTON CREEK

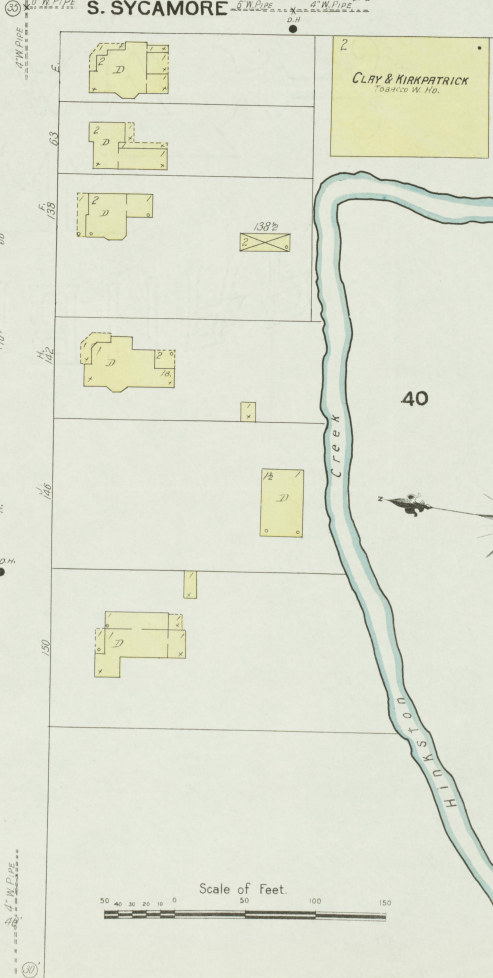
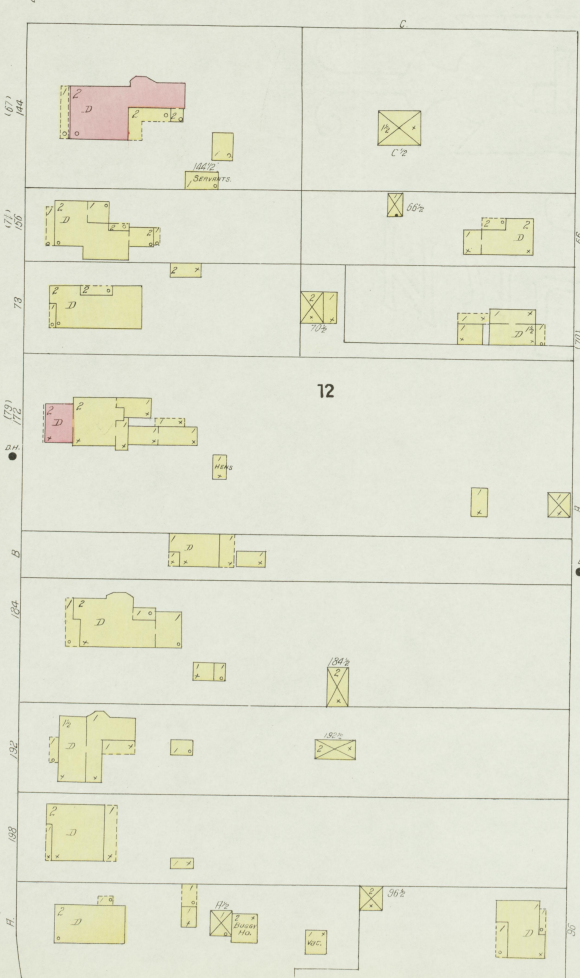
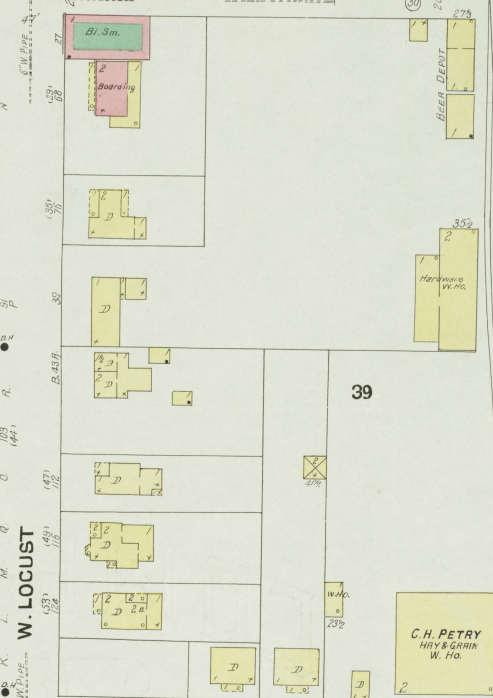
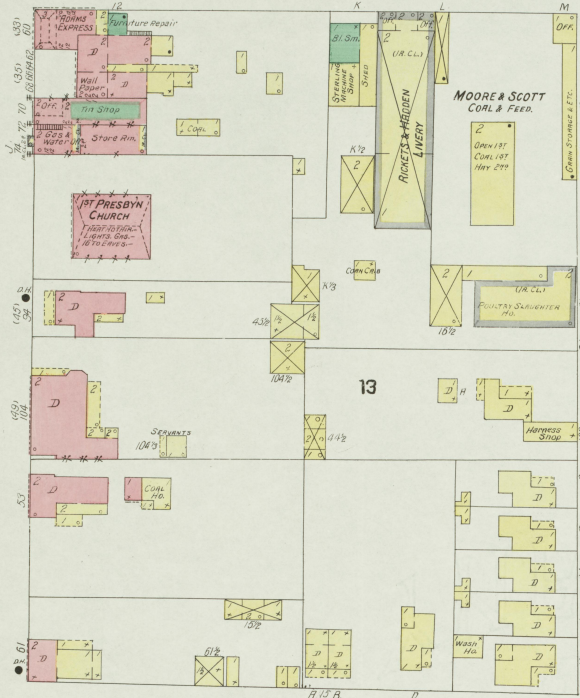


Scale of Feet.

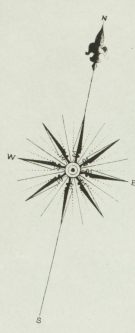


N. PLEASANT ALLEY

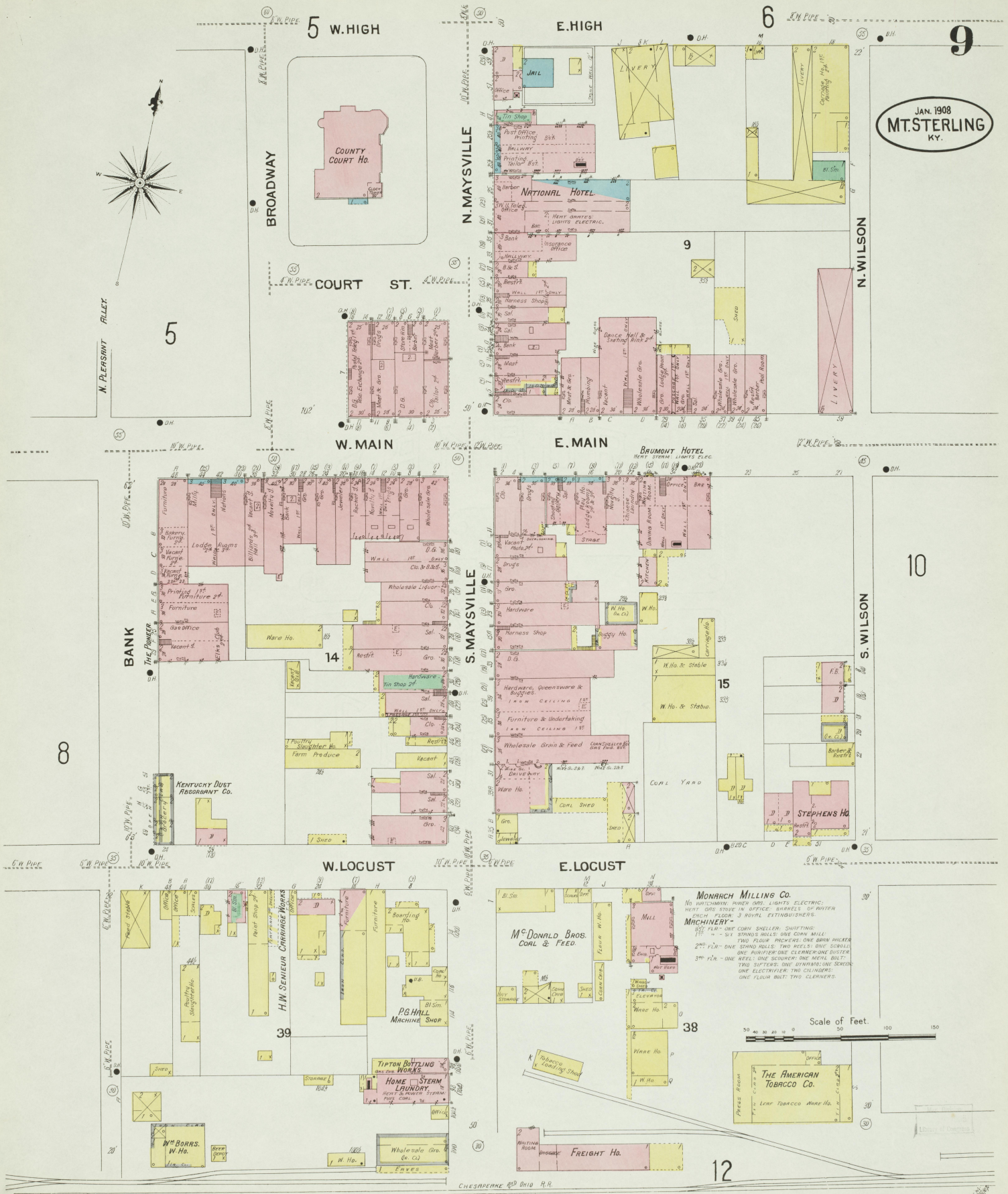
M. SYCAMORE







JAN. 1908  
MT. STERLING  
KY.



5 W. HIGH

E. HIGH

6

9

BROADWAY

N. MAYSVILLE

N. WILSON

COURT ST.

W. MAIN

E. MAIN

BRUMONT HOTEL

10

S. MAYSVILLE

S. WILSON

8

W. LOCUST

E. LOCUST

MONARCH MILLING CO.  
NO. 1 WATCHEMAN POWER 500; LIGHTS ELECTRIC;  
HEAT ONE STOVE IN OFFICE; BARRELS OF WATER  
2000; FLOOR 3 ROVAL EXTINGUISHERS.  
MACHINERY -  
350' F.L. - ONE CORN SHELLER; SHOOTING  
1' F.L. - ONE STAND BOLL; TWO REELS; ONE CORN MILL;  
200' F.L. - TWO FLOUR PICKERS; ONE BRAN BAKER;  
ONE PURIFIER; ONE CLEANER; ONE DUSTER;  
300' F.L. - ONE REEL; ONE SCOURER; ONE WHEAT BOLT;  
TWO SIFTERS; ONE DEKANDER; ONE SEEDER;  
ONE ELECTRIC; TWO CYLINDERS;  
ONE FLOUR BOLT; TWO CLEANERS.

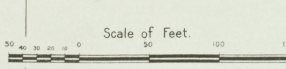
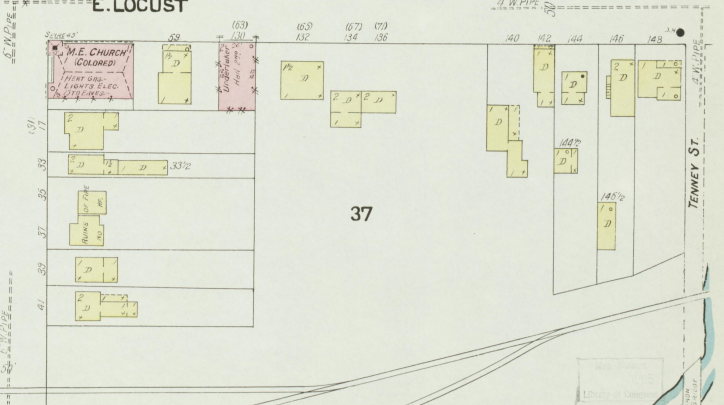
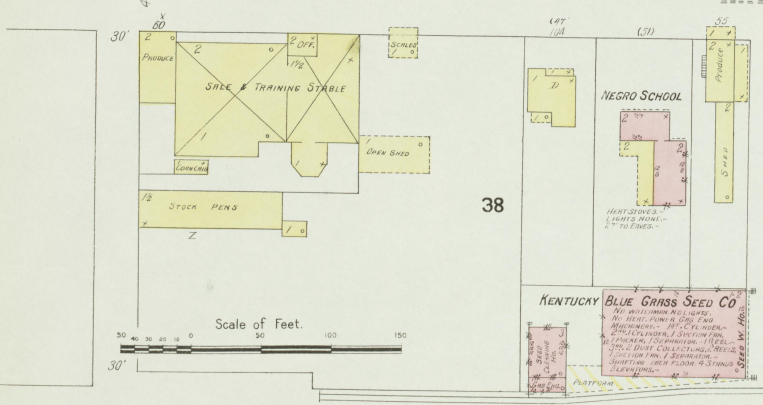
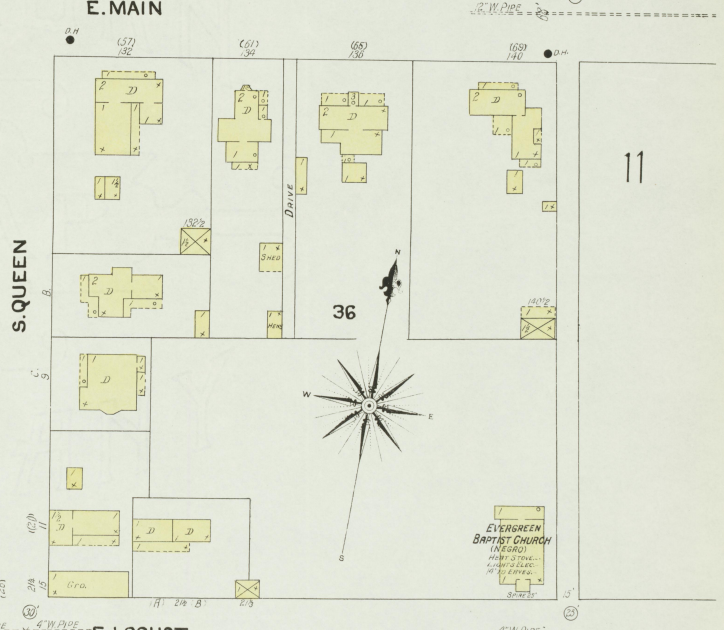
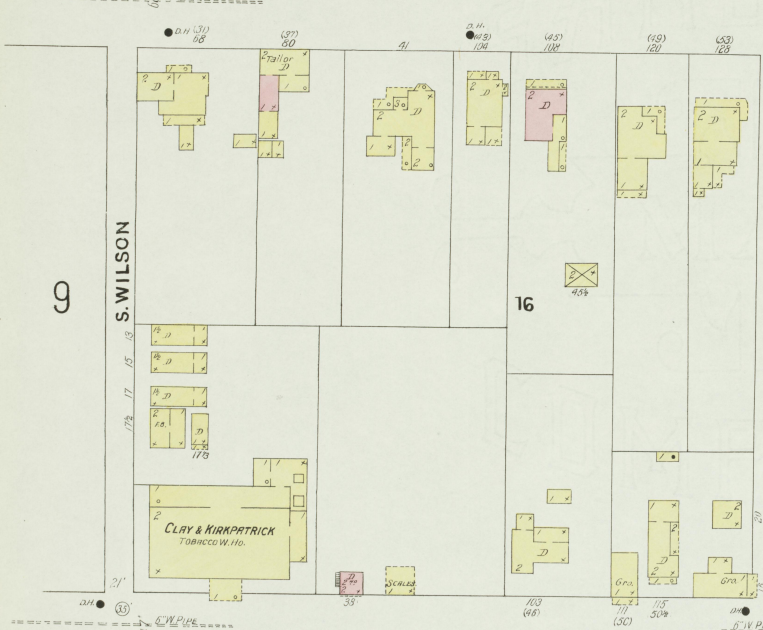
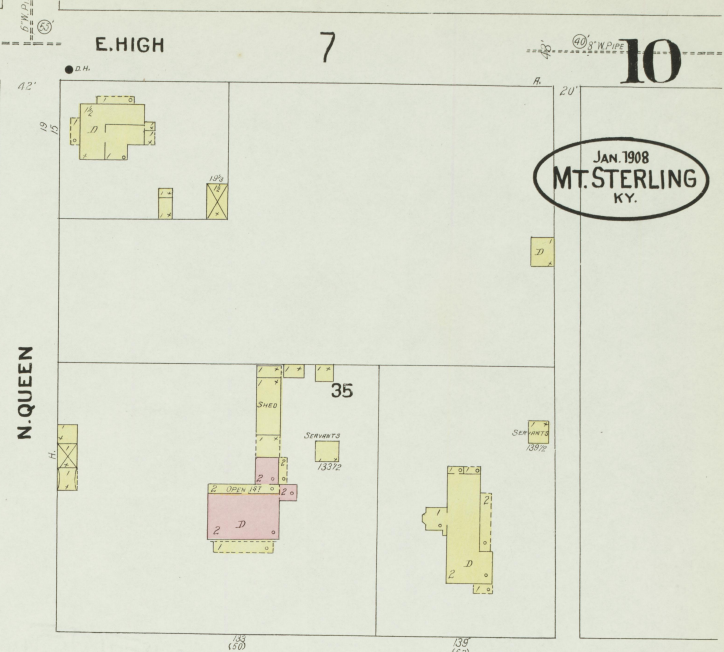
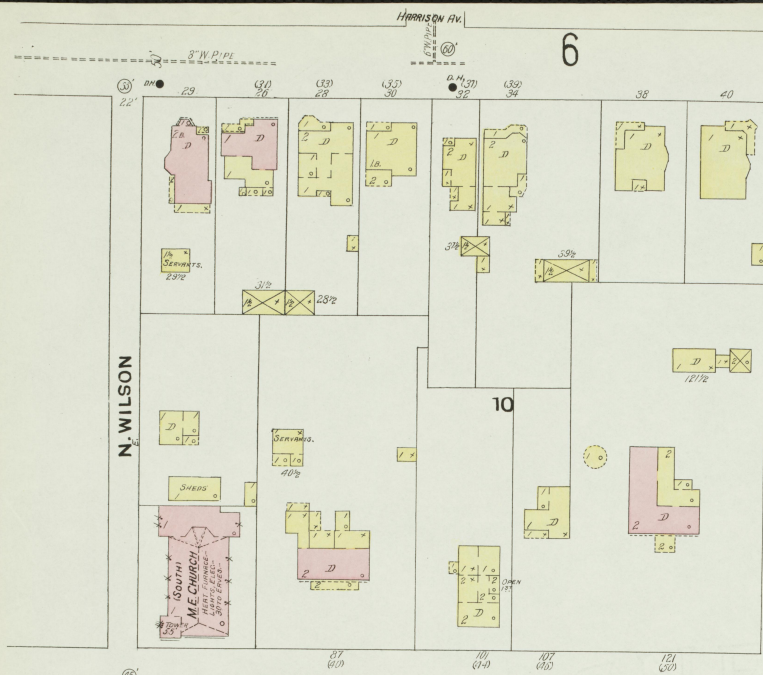
Scale of Feet.  
0 50 100 150

38

12

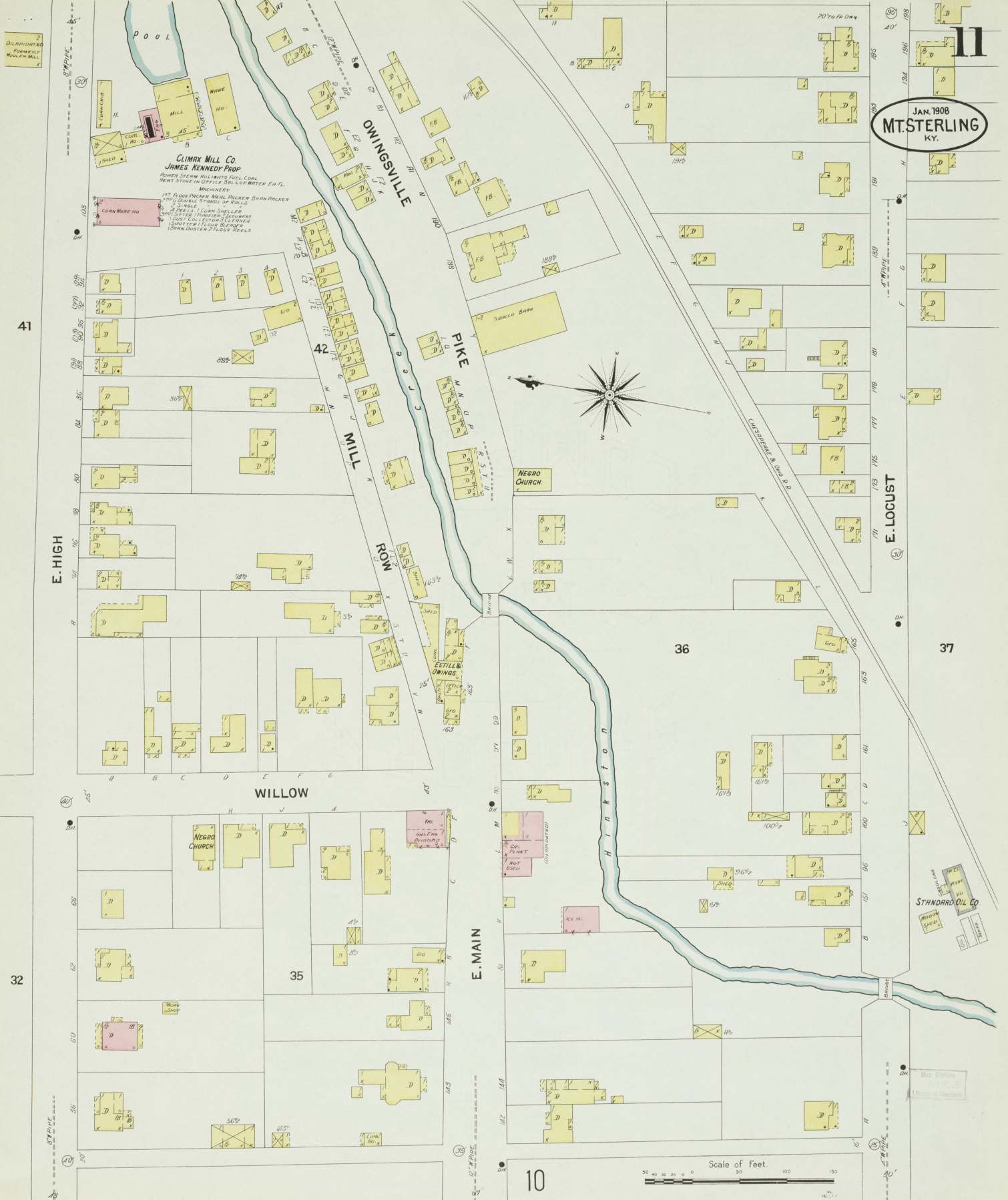
CHESAPEAKE AND OHIO R.R.

JAN. 1908  
MT. STERLING  
KY.



CHESAPEAKE & OHIO R. R.

JAN 1908  
MT. STERLING  
KY.



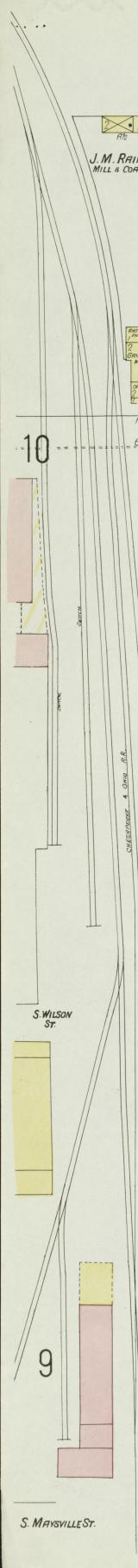
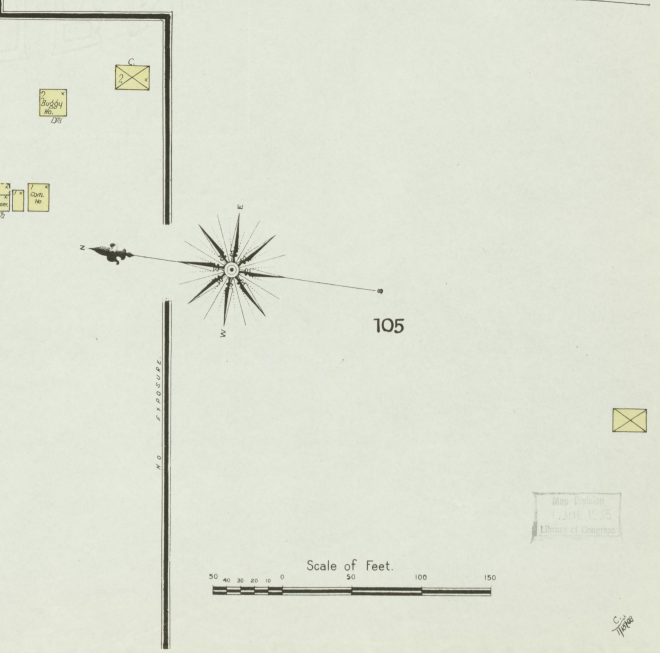
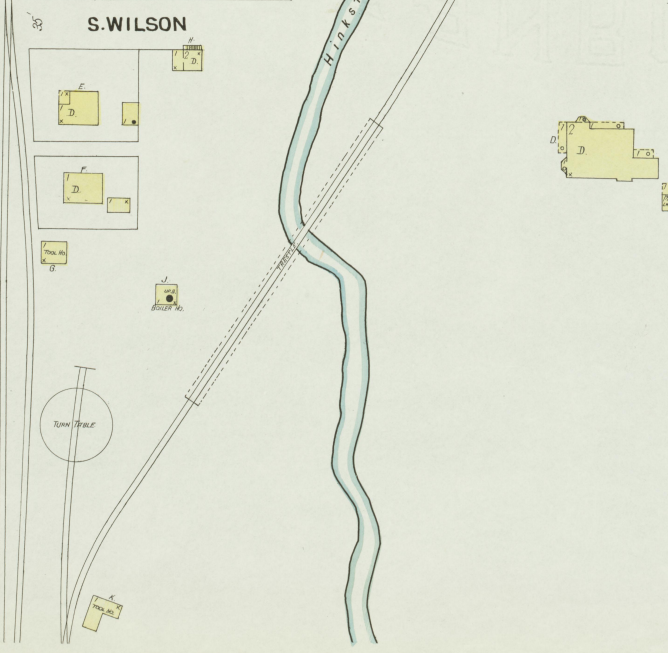
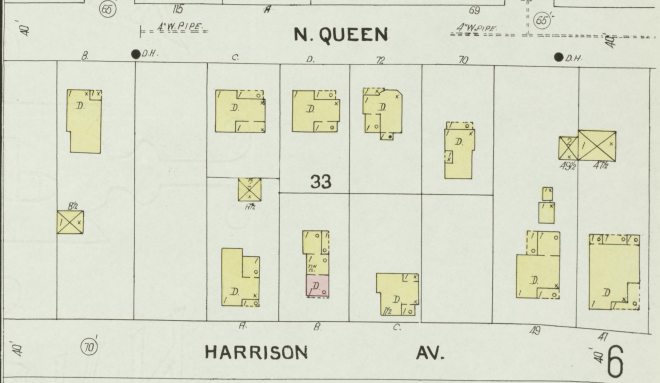
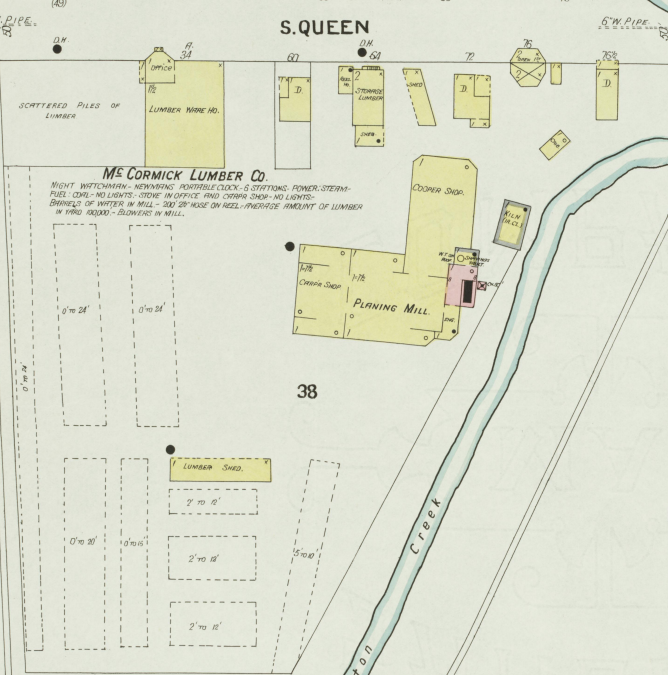
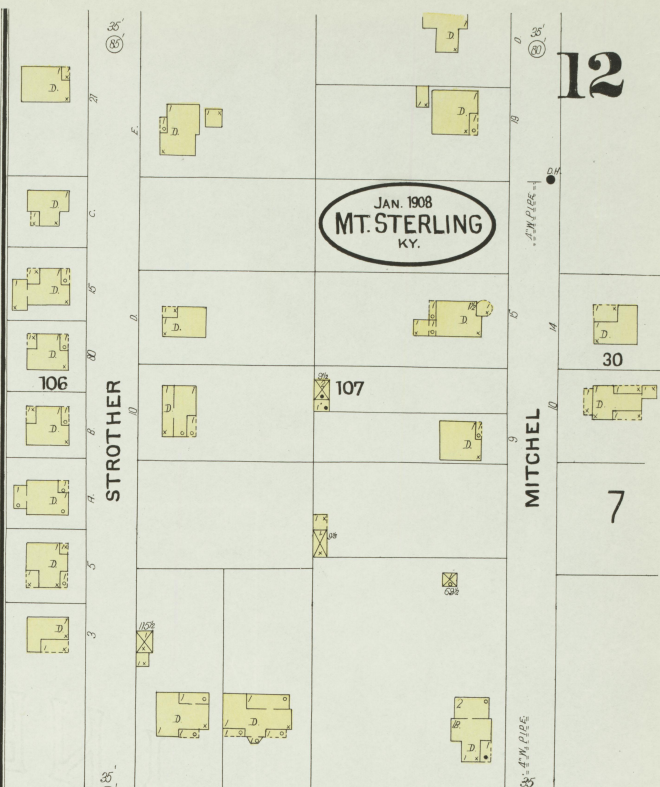
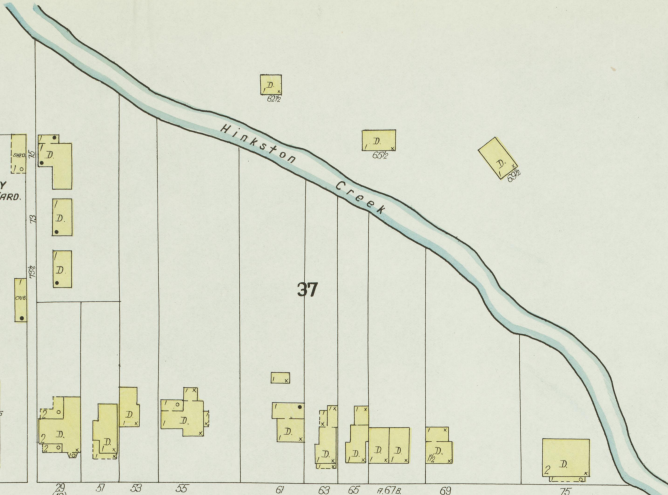
**CLIMAX MILL CO**  
JAMES KENNEDY PROP.  
POWER STEAM MOLLINETS FULL COAL  
WATER STEAM INVERTICE DILLS UP WATER FT FL.  
MICHIGAN  
1ST FLOUR PICKER, MEAL PICKER, OYAN PICKER  
2ND FLOUR PICKER, MEAL PICKER, OYAN PICKER  
3RD FLOUR PICKER, MEAL PICKER, OYAN PICKER  
4TH FLOUR PICKER, MEAL PICKER, OYAN PICKER  
5TH FLOUR PICKER, MEAL PICKER, OYAN PICKER  
6TH FLOUR PICKER, MEAL PICKER, OYAN PICKER  
7TH FLOUR PICKER, MEAL PICKER, OYAN PICKER  
8TH FLOUR PICKER, MEAL PICKER, OYAN PICKER  
9TH FLOUR PICKER, MEAL PICKER, OYAN PICKER  
10TH FLOUR PICKER, MEAL PICKER, OYAN PICKER  
11TH FLOUR PICKER, MEAL PICKER, OYAN PICKER  
12TH FLOUR PICKER, MEAL PICKER, OYAN PICKER  
13TH FLOUR PICKER, MEAL PICKER, OYAN PICKER  
14TH FLOUR PICKER, MEAL PICKER, OYAN PICKER  
15TH FLOUR PICKER, MEAL PICKER, OYAN PICKER  
16TH FLOUR PICKER, MEAL PICKER, OYAN PICKER  
17TH FLOUR PICKER, MEAL PICKER, OYAN PICKER  
18TH FLOUR PICKER, MEAL PICKER, OYAN PICKER  
19TH FLOUR PICKER, MEAL PICKER, OYAN PICKER  
20TH FLOUR PICKER, MEAL PICKER, OYAN PICKER

NEGRO CHURCH

STANDARD OIL CO

Scale of Feet  
50 40 30 20 10 0 50 100 150

10



12

30

7

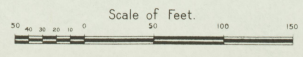
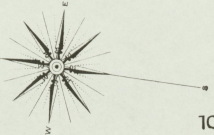
6

JAN. 1908  
MT. STERLING  
KY.

MS CORMICK LUMBER CO.  
NIGHT WATCHMAN - NEWBORN PORTABLE CLOCK - 5 STATIONS, POWER - STEAM - PAUL COAL - NO LIGHTS - OTTER IN OFFICE AND CHAIRS SHOP - NO LIGHTS - BRINKLEY OF WATERS IN MILL - 242 20' WARE ON WHEEL - PRODUCE AMOUNT OF LUMBER IN WARD 10000 - BURNERS IN MILL.

N. QUEEN

HARRISON AV.



Map of  
JAN. 1908  
Mount Sterling

C. H. HARRIS