



GAY and *The*  
LESBIAN  
SERVICE  
ORGANIZATION  
Lexington, Kentucky

# GLSO NEWS

December 2003

A publication of the Lexington Gay and Lesbian Service Organization

Volume 18 Number 11

## *Rock in the Holiday with SisterSound*

SisterSound is gearing up for a fabulous December concert. If you have yet to finalize your holiday party schedule, save Saturday evening, December 20th, for "Holiday Rock" at 8:00 at the UK Singletary Center for the Arts. The concert will include selections from many genres of music in celebration of this season of holidays. Come in out of the cold weather and enjoy the evening in the warmth of friends.

For the first time, a CD of the concert music will be available the night of the show. Holiday Rock - the CD - will make the perfect stocking stuffer or last minute gift for those on your shopping list.

Also, with this concert SisterSound is changing from reserved to festival seating. So come a little early and choose the spot you want.

Tickets are available in advance from any SisterSound member, or call Toine at 276-0753. Tickets can also be purchased at the Singletary Center box office (257-4929) in advance or the evening of the concert. Prices are \$15 regular, \$10 for students and seniors, \$5 for children.

SisterSound will welcome new members again in January as we begin working on music for our May concert. For more information visit our web site at [www.geocities.com/sistersound](http://www.geocities.com/sistersound) or send us an e-mail at [sistersound@hotmail.com](mailto:sistersound@hotmail.com).

## Another Note

Another Note is pleased to announce its upcoming Holiday Concert on December 7th at 4pm at Woodland Christian Church. Suggested donations of \$8 at the door will benefit AVOL and Moveable Feast. With a mix of holiday favorites, some old and some new, Another Note will provide an evening of fun and entertainment for all ages.

Another Note is a non-audition men's choral group in its 7th season of entertaining the GLBT community and friends. For information about the concert or the group, contact director Steve Johnson at 859 233-1730.

## AVOL Events

Dec. 1 World AIDS DAY page 3

## *KPOL Holiday Soiree*

KPOL's annual Holiday Soiree will be held on Wednesday, Dec. 3 at Club 141 at 141 W. Vine St. This is a free event and donations of non-perishable items for those in need appreciated. ...continued page 3

GLSO

will be signing up new  
sponsors for 2004  
during December  
call Bill

253-3233



**GAY and  
LESBIAN  
SERVICE  
ORGANIZATION**  
Lexington, Kentucky

## **The GLSO NEWS**

**Volume 18 Issue 12**

published monthly by  
**The Lexington Gay  
Lesbian  
Service Organization**  
**389 Waller Ave.**

### **Editors**

**Mary Crone  
Jackie Cobern**

### **Board Members**

**Thomas Collins, President**  
**Joan Branon, Vice-Pres.**  
**Clayton Dobson, Treas.**  
**Mary Crone, Editor**  
**Jackie Cobern**  
**Tom Collins**  
**Sarah Martin**  
**Ginger Moore**  
**Terry Mullins**  
**Ben Saylers**

### **GLSO Annual Dues & Newsletter.**

**Individual - \$15**  
**Couple - \$25**

Opinions expressed in the GLSO News are those of the authors and don't necessarily represent those of the GLSO Board. Submissions are welcome and staff reserves the right to edit submissions and advertisements as well as the right to reject

## **Public Library Welcomes GLSO News**

by Thomas Collins, GLSO President

I would like to thank all of you who responded so efficiently, eloquently and quickly when the library pulled The GLSO News from the community information tables. We had phone calls and emails from many straight supporters in our community. A special thank you to library employees for their support.

Once I learned of "the ban" on Wednesday I tried to get in touch with the new director, Ms. Kathleen Imhoff. She did return my calls but, unfortunately, I was away from my desk. She left me a message stating that she was headed out of town and for me to contact Mr. Greg Davis. I went to the library and met with Mr. Davis in person Wednesday evening. I am of the mind that this controversy was unloaded into Mr. Davis' lap with no forewarning. I believe he was unaware that The GLSO News and The Letter were pulled. Mr. Davis was very receptive to what I had to say, genuinely concerned and promised that he would look into it and get back with me.

I left town early Thursday morning and called that evening to retrieve two messages from Mr. Davis. He stated that he had spoken with the chairman of the board, James Lee, Jr; the director, Kathleen Imhoff; the assistant director of Human Resources, and Susan Brothers. He said that The GLSO News had been pulled in error due to the assumption that The Letter and The GLSO News were distributed by the same entity. He was very apologetic and very sincere. He also stated that The GLSO News is welcome back onto the distribution table as soon as we can get more copies to them.

I am pleased with the library's decision. Currently, we only place our newsletters in the main branch downtown. Now that this has happened and we know that we will be welcomed with open arms, I will work on getting copies to all the Lexington branches for their tables. We also plan to put our brochures in libraries, both in English and Spanish.

It would be great if some of you could write or email Mr. Greg Davis, Mr. James Lee, Ms. Kathleen Imhoff and Ms. Susan Brothers and thank them for welcoming The GLSO News and why you think it is important that they continue to do so. Again, thank all of you very much, I cannot express how much your support has meant to our....your....organization.

# Community News

from page 1 DJ Drag will be spinning your favorite R & B and Hip Hop hits.

There will be information about HIV/AIDS available. There will also be good food, door prizes, and a drag show. For more information call AVOL at 859 225-3000.

## BINGO

On Saturday, December 6, from 7pm to 10 pm, there will be a non-traditional Bingo Night at the Dunbar Center at Fifth and Upper. This is a free event with free food and prizes for the winners of each game. There will be no cash payouts. There will be lots of fun and a grand prize for the Bingo Champ.

For more information about this event, contact Aunsha Hall at 859 225-3000 or 859 338-8951.

## Art Exhibit Planned

Bob Morgan is in the planning stages for an art exhibition that will happen June of 2004. The title is *Gypsies, Tramps, and Thieves / 100 Years of Sailors, Hustlers, Drag Queens and Wild Childs in the Lexington Underground Art Scene*.

In addition to his own work, he is drawing from the collections of Sweet Evening Breeze, Henry Faulkner, John Warner, John Ashley, Joanne and Jimmy Gordon (the amazing jimberly) and many collections of the departed and anonymous.

The show will center on works of art-painting, drawing and photography that were inspired by these muses'. If you have any material that should be considered please contact Bob Morgan at Gallerie Soleil, 363 west short, phone 233-0890.

## WORLD AIDS DAY EVENTS

**Sunday, Nov 30,**

Various Congregational Observances

7 pm: World AIDS Day Youth Speak, Common Grounds, 343 East High Street

**Monday, December 1**

10 am - 5pm: Information and Resource Fair Univ of Ky Bluegrass Care Clinic

**Downtown Public Library Theater**

6 pm: Video and Panel Discussion,

6:45 pm: Reception & "Faces of AIDS"

7 pm A Service in Remembrance & Hope

8 PM (Immediately Following Service): Candlelight Vigil Phoenix Park

**Sunday December 7**

9:15 & 11 am Unitarian Universalist Church Service: a dramatic and spoken meditation on the struggle with AIDS in Africa.

## Men Of All Colors Together

KY Men of all Colors Together (MACT) is a local chapter of a national gay multiracial organization which fosters a supportive environment where friendships and partnerships can be celebrated free of racial and cultural barriers.

Our December meeting will be a Christmas party in Richmond on Saturday December 6 at 7:30 PM. This will be a "build your own pizza" dinner with hot mulled wine, mulled cider and other beverages provided. We plan to sit around a fire and sing some songs of the season.

Limited accommodations for the night will be possible for those driving long distances. For directions or information, email MACTky@aol.com. call 859-351-4453 (Jon) or see [www.mactky.com](http://www.mactky.com)

## Sistahs in The Life

Sistahs in the Life is a support group for Black Lesbians and Bi-sexual women. Join us for provocative discussions about our lives and experiences. We meet at 7 pm every first Tuesday and the Pride Center. For information contact Joan at 859 539-2657 or email [Jweslie@aol.com](mailto:Jweslie@aol.com).

## Lexington Lyons Levi/Leather Club

The Lyons Club conducts business meetings once a quarter, on the second Monday night of the month, at 8 pm at the Pride Center. We also get together for brunch on the last Sunday of every month at Mia's at 1pm to share some food, drinks and laughs.

The Lyons are proud to be a Pride Patron of the GLSO Pride Center.

## Kentuckians for the Commonwealth

The Central Kentucky Chapter of Kentuckians For The Commonwealth (KFTC) invites your participation in their work. Leah Ottersbach is the organizer for the chapter and coordinator the chapter's anti-discrimination work team. Recently member of this work team went door to door with Fairness in Richmond. We help bring Tim Wise to Lexington recently and are also planning a workshop and community forum on racism some time in the near future.

Kentuckians for the Commonwealth also has economic justice and environmental justice work teams. Their work includes the Lexington Living Wage Campaign, supporting the efforts to the city's solid waste worker's to gain hazardous duty pay and retirement, and opposing the destructive mining practice of mountaintop removal in Eastern Kentucky.

You can contact us at [jlyn-jenks@msn.com](mailto:jlyn-jenks@msn.com) or at 254-3585.

## People for Unity and Fairness

People for Unity and Fairness serves the needs of gay and lesbians in rural Central Kentucky. Our mission is community building; we will work to unite gay, lesbian, bisexual and transgender people.

We welcome the support and membership of any individuals. We meet weekly for business and discussion. For information, contact Adam Tubbs at (859) 803-1130 or email [CUFCKY@aol.com](mailto:CUFCKY@aol.com).

## Reality Bytes

Reality Bytes is a new Coffee Shop and Internet Cafe that has opened in Georgetown. They are located on Frazier Court, between 84 Lumber and Wal Mart. If you enjoy a variety of specialty coffees, this is the place to be. They serve cappuccino, espresso, lattes and fine herb teas.

For the computer buffs, you can purchase time to check your email or to play games. There are computer classes offered as well as repair services.

The owner is planning to show movies of interest to GLBT folks on every other Sunday afternoon from 2 until 6. For more information call 502 863-6090

## Reality Bytes

107 Frazier Ct., Georgetown  
Internet Cafe and Coffee Shop  
502 863-6090

Offering Specialty Coffees: Cappuccino,  
Espresso, Lattes and Fine Herbal Teas

Computer Gaming & Classes  
Computer Repair

Some Sundays 2-6  
GLBT Movies





# *Holiday Rock*

*A concert of seasonal music  
from Sistersound*

*Lexington's Women's Chorus*

*Saturday, December 20, 8pm*

*UK Singletary Center for the Arts*

*Ticket prices: \$15 regular admission*

*\$10 students and seniors*

*\$5 children*

*Tickets are available from  
the Singletary Center for the Arts Box Office  
(859) 257-4929*

*[www.geocities.com/sistersound](http://www.geocities.com/sistersound)*



## PRIDE CENTER NEWS AND ACTIVITIES

389 Waller Ave. 859-253-3233 Mon-Sat 10 - 3



### *Gaymes Night New Years Eve at the Pride Center*

Are you tired of sitting home alone on New Year's Eve? Have you had enough of the bar scene? If you're looking for a different place to spend New Year's Eve, stop by the Pride Center. We'll be hosting Gaymes Night on New Year's Eve beginning at 8 p.m. until past midnight.

Bring your favorite game, snack and beverage and hang out with your friends. If you don't like to play games, join us anyway. We are always having interesting discussions on topics like politics, movies and sex. Stop by the Pride Center and ring in the New Year.

### **LESBIAN VIDEO NIGHT**

Join us Friday, December 12 at 7:00 p.m. for Aimee & Jaguar. This 1998 German film tells the true story of two women, one Jewish and one German, who fell in love in Nazi Germany during World War II. This film is unrated, but includes sexually explicit scenes, some violence, and scenes of the aftermath of battles. We will most likely view it in German with English subtitles.

### **Lex. Dress and Gender Alliance**

<http://groups.yahoo.com/group/lexDGA>

LexDGA is a peer discussion group for anyone who transcends gender norms or is questioning their gender identity. (transsexuals, intersexuals, effeminate men, masculine women, drag kings and queens etc.) We meet the first Saturday of each month.

Family and supportive allies are also welcomed. For info call 859 273-0785 or email [kellindel@hotmail.com](mailto:kellindel@hotmail.com).

### *Regular Events*

**Discussion Group ... Wed at 7**

**Xena- The Second Season**  
Third Sat 1 - 4

**Lesbian Video Night**  
Second Friday of each month at 7pm

**Gaymes Night**  
4th Saturday night at 7

**Monthly Coffeehouse and  
Men's Night Out**  
will resume in January

### **YANG: YOUNG ADULT NIGHT GROUP**

Andrew Hyde who has been the coordinator of a young adult group, has recently moved to another city. Another group for people in their 20's is in the works. They have chosen the name YANG which stands for Young Adult Night Group.

There will be a planning meeting at the Pride Center on Thursday, Dec 4 at 7 pm. They are thinking of having one weeknight discussion and one weekend activity per month. The January GLSO News will have more information.

### **40+ Women's Group**

All lesbian and bi-sexual women over 40 are invited to attend our regular meetings and social events. On December 20th we plan to meet at the Pride Center at 5, go to dinner at Bancroft Hoise and then to the SisteSound concert together on the 20th. call Ginger ( 276-0673) by the 18th if you are planning on joining us for dinner or for information. We are making plans to go to a Robbie Bartlett Concert on New Year's Eve. call or email [ggclr@hotmail.com](mailto:ggclr@hotmail.com) for more information.

# HIV PREVENTION BINGO!



## **NOT YOUR TRADITIONAL BINGO!**

**BINGO WITH A FUN TWIST!**

**\*\*NO CASH PAYOUTS \*\***

**Free HIV Prevention Bingo Nite!**

**Free Food!**

**FREE PRIZES AND GIVEAWAYS!**

**GRAND Prize For Bingo Champ!**



***Saturday, December 6, 2003***

***7 pm to 10 pm***

***Dunbar Center, Fifth and Upper***

***for more information contact Aunsha Hall***

***(859) 225-3000 or (859) 338-8951***

**An HIV Prevention Event Sponsored by**



## Spiritual Resources

### Integrity

Integrity, a group for GLBT Episcopalians and friends, invites you to a Christmas Party on Sunday Dec. 14 from 4 to 5:30 at St. Michael's Episcopal Church at 2025 Bellefonte St. Bring a candle and a dish to share. Call Rev. Sandy Stone at 277-7511 or email [stmintegrity@yahoo.com](mailto:stmintegrity@yahoo.com)

### *St Mychal The Martyr A New Church for Lexington!*

St Mychal the Martyr has services each Sunday at 10:30 at 1350 Eastland Dr. with Rev. Kenneth Waibel performing mass. St Mychal is a member of the Orthodox Catholic Church of America, a national denomination that is gay supportive. The OCCA performs blessings of gay unions, and ordains women to the orders of Deacon, Priest, and Bishop.

The Church is one of about three dozen offshoots from the Roman Catholic Church, and is open to married, divorced and single individuals, welcoming all persons regardless of the blessings or problems of their lives.

### Unitarian Universalist Church

The UU Church of Lexington welcomes visitors at any time. Worship Services are at 9:15 and 11 am every Sunday. There is child care and religious education for young people K-12 during the second service. We are located at 3654 Clays Mill Rd.

On Dec. 7 our **World AIDS Day Service** will be a dramatic and spoken meditation on the struggle with Aids in Africa.

The Sunday before Christmas, Dec 21st, will honor the **Winter Solstice**. This is a great opportunity for any interested pagans to see how we celebrate the changing of the seasons. We don't burn sage in the sanctuary anymore, some parents of pre-school children that attend a school here during the week expressed concern about the lingering smell.

Our **Christmas Eve Service** will be at 6 pm on Dec 24. Come sing carols and participate in one of the more traditional services you will find at the UU church.

The Women's Spirituality Group will meet on Dec. 5 and 19. On the 5th we will engage in Spiritual Play, making "meditation" beads and decorating pillowcases for the women's Hope Center. On Dec. 19 we will have a Solstice Celebration call Mary Crone 266-5904 for info and directions.



## *St. Mychal the Martyr*

*Welcoming all people equally: Gay & Straight,  
Men & Women,  
Married, Divorced & Single*

1350 Eastland Dr, Lexington, Ky  
(859) 389-9418

*The Orthodox Catholic Church of America  
"A Church for the New Millenium"*





The Imperial Court of Kentucky,  
Moveable Feast-Lexington, & Kurt Gohde  
present

*"Fairy Tales"*

A Calendar for 2004

The best holiday gift of the year, available at...

**Paisley Peacock**  
371 S. Limestone  
253-9228

**The Bar Complex**  
224 E. Main St.  
(see Kenneth)

**Posh Salon & Spa**  
2573 Richmond Rd. Ste 240  
269-POSH / 269-7674

**CD Warehouse**  
Euclid & Rose  
254-9196

**Pride Center of the Bluegrass**  
389 Waller Ave.  
253-5233

**Moveable Feast Lexington**  
472 Rose St.  
St. Augustine's Chapel (Basement)  
252-2867

**Silverado Jewelry & Gifts**  
1719 N. Broadway Suite 7  
299-2100

Any Imperial Court Board Member

Or purchase online at <http://kentucky.impcourt.org>

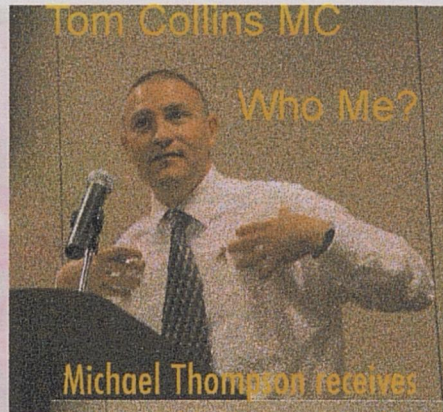
Proceeds benefit Moveable Feast Lexington

*GLSO Volunteer Awards Banquet 2003*

**Ernesto Scorsoni Wasson**

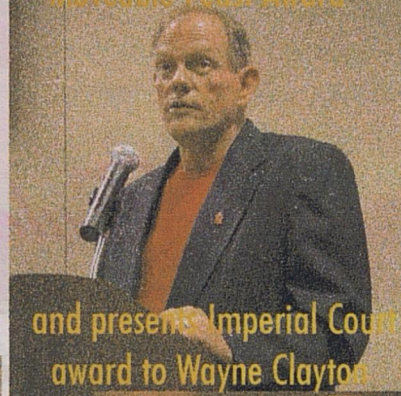


**Award  
for years of  
outstanding  
service to our  
community**

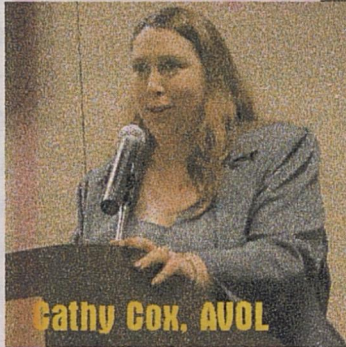


**Michael Thompson receives  
Moveable Feast Award**

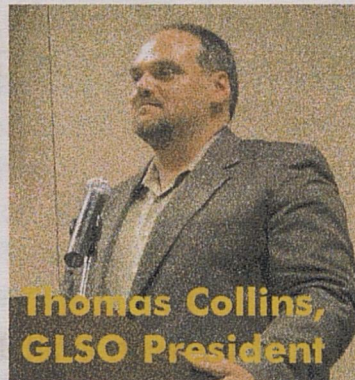
**Joan Brannon presents  
Rainbow Community  
Service Award to AVOL**



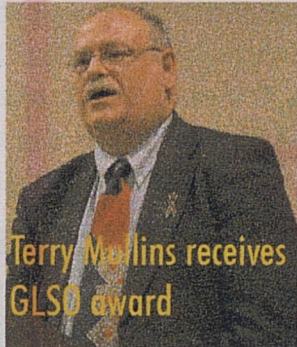
**and presents Imperial Court  
award to Wayne Clayton**



**Gathy Cox, AVOL**



**Thomas Collins,  
GLSO President**



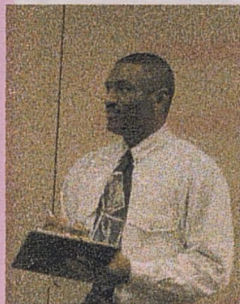
**Terry Mullins receives  
GLSO award**



**Larry Johnson presents Mary  
Crone with Humanitarian: Center  
for Culture and Diversity Award**



**David Cupps receives awards from Jim  
Dickenson, Bluegrass Fairness and from  
Sky Hedman,  
Integrity**



**Bill Chandler keeps the  
program running  
smoothly**



# **GLSO RAINBOW SPONSOR**

**Imperial Court of Kentucky ..... 252-3014**

A Charity Organization

## **2003 Pride Month Sponsors**

**Scott Ackerman. .... (voice) 294-2055**

For all your real estate needs **(mobile) 338-8483**

**The Bar Complex .....255-1551**

224 East Main Street

**Fairness: Bluegrass Chapter. .... 859-806-4114**

Promoting equality for all people

## **Pride Patron**

**Lexington Lyons Levi/Leather Club. .... 272-0408**

## **GLSO News Sponsors 2003**

**SisterSound .....243-0243**

Diverse music for all women

**Richardson Vision Center .....278-4201**

1757 Alexandria Dr., Gardenside

**Unitarian Universalist Church .....223-1448**

Seeking a Diverse Congregation

**Debra Hensley Insurance .....276-3244**

1513 Nicholasville Road

**Windy Knoll Farm .....299-7410**

Riding Lessons, Trail Riding, Boarding

**Lexington Men's Chorus .....255-1974**

Rehearsal every Sunday


Call number in  
Directory for  
Information.



# December 2003



**HAPPY  
HOLIDAYS**

Sunday	Monday	Tuesday	Wednesday	Thursday	Friday	Saturday
<p>Meeting at the Pride Center may be abbreviated to "PC"</p> <p>Call for Place may be abbreviated to Call</p>	<p><b>1</b> GSA 7pm</p>	<p><b>2</b> 7 pm Sistahs in The Life - Pride Center</p>	<p><b>3</b> 7 pm Discussion Group Pride Center 8 pm Gay/Lesbian AA (Call for place) 9pm-1 Club 141 KPOL's Annual Soiree</p>	<p><b>4</b> 7 pm YANG Young Adult Night Group Planning Meeting - Pride Center</p>	<p><b>5</b></p>	<p><b>6</b> Pride Center Open 10-3 8 pm LDGA meeting 7:30 pm MACT -see page 3 7-10pm Dunbar Center HIV Prevention Bingo For info. call 225-3000</p>
<p><b>7</b> 9:15 &amp; 11 am UU Church World AIDS Day: Africa Services 10:30 Sunday Mass, St. Mychal the Martyr 6 SisterSound Rehearsal 7 pm Dignity Call for place 7 pm LMC Rehearsal, St. Michael's Episcopal Church</p>	<p><b>8</b> 8 pm AA Step Study (Call for place)</p>	<p><b>9</b> 7 pm GSA (Call for place)</p>	<p><b>10</b> 7 pm Discussion Group 8 pm Gay/Lesbian AA</p>	<p><b>11</b></p>	<p><b>12</b> 7 pm Lesbian Movie Night, Pride Center 7:30 pm Gay/Lesbian AA (Call for place)</p>	<p><b>13</b> Pride Center Open 10-3pm</p>
<p><b>14</b> 9:15 &amp; 11 am UU Church 10:30 Sunday Mass, St. Mychal 6 SisterSound Rehearsal, Landsdown Presby Church 6 pm Imperial Court PC 7 pm LMC Rehearsal, St. Michael's 7:30 Soulforce</p>	<p><b>15</b> 7 pm GLSO Board Meeting, Pride Center 8 pm AA Step Study (Call for place) GLSO News Deadline</p>	<p><b>16</b> 7 pm GSA (Call for place)</p>	<p><b>17</b> 7 pm Discussion Group Pride Center 8 pm Gay/Lesbian AA (Call for place)</p>	<p><b>18</b></p>	<p><b>19</b> 7:30 pm Gay/Lesbian AA (Call for place)</p>	<p><b>20</b> Pride Center Open 10-3pm 1-4pm XENA - Second Season -Pride Center 8 pm SisterSound Concert - UK Singletary</p>
<p><b>21</b> 9:15 &amp; 11 am UU Church Winter Solstice Services 10:30 Sunday Mass, St. Mychal the Martyr 7 pm LMC Rehearsal</p>	<p><b>22</b> 8 pm AA Step Study (Call for place)</p>	<p><b>23</b> 7:30 pm Fairness, Pride Center</p>	<p><b>24</b> 6 pm Christmas Eve Service UU Church 7 pm Discussion Group 8 pm Gay/Lesbian AA (Call for place)  Happy Chanuka </p>	<p><b>25</b> Pride Center Closed  Merry Christmas </p>	<p><b>26</b> 7:30 pm Gay/Lesbian AA (Call for place)  Joyful Kwanzaa</p>	<p><b>27</b> Pride Center Open 10-3pm</p>
<p><b>28</b> 9:15 &amp; 11 am UU Church Worship Services 10:30 Sunday Mass, St. Mychal the Martyr 6 pm Imperial Court PC</p>	<p><b>29</b> 7 pm GSA (Call for place) 8 pm AA Step Study (Call for place)</p>	<p><b>30</b></p>	<p><b>31</b> 8 pm New Year's Eve Party - Pride Center</p>			

Older man looking for house mate to assist with driving and other tasks in exchange for free rent. South end of town. Call Al at 260-7703

### **PARTICIPANTS NEEDED**

We are looking for couples to participate in a study of advance planning by same-sex couples. We would like to conduct a brief interview with couples who have some or all of the following advance planning documents: a will or living trust, a power of attorney for health care (or health care surrogate), a living will, and a power of attorney for finances.

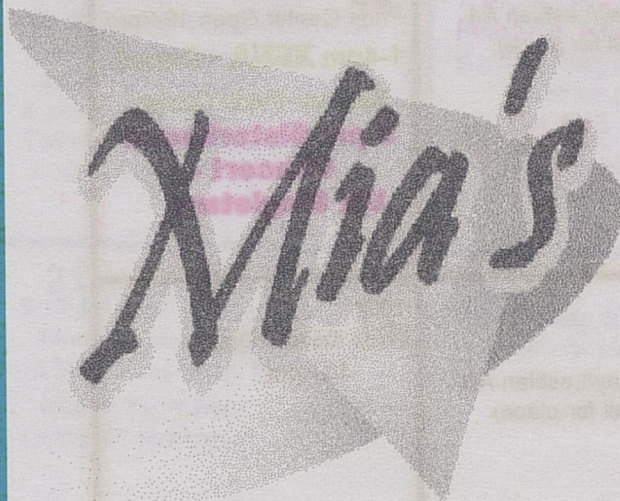
If you and your partner are both 25 or older, have been together for 2 or more years, currently live together, and have some or all of these documents, please contact us via email at [e.riggle@uky.edu](mailto:e.riggle@uky.edu) or phone (859) 257-7880

## ***Faerie Tales Calendars***

*The Gift of the Season!*

Beautiful princesses, evil witches, three bears, two ugly stepsisters, and a big bad wolf make Faerie Tales 2004 calendar a must for any Christmas list. Brought to you by The Imperial Court of Kentucky, Moveable Feast Lexington and artist Kurt Gohde. You can get yours at The Bar Complex (see Kenneth), Mia's (see Kevin), CD Warehouse (Rose & Euclid), Posh Salon & Spa, Moveable Feast Lexington, or The Pride Center of the Bluegrass. See page 9 for more places to pick one up. .

You can also order calendars online at [www.impcourt/kentucky/](http://www.impcourt/kentucky/) or by calling 859.258.2997. Calendars are \$15 or make your shopping easy and get 10 for \$130. Online orders ship quickly. (\$2.95 S&H)



## **Simply Fine Food & Drink**

**120 South Upper St**

**Lexington Kentucky**

**40507**

**Maribeth Tolson  
Mia Mobelini**

**We would love to cater  
your next event.**

**859.455-9903**

**859.552-MIAS**

Wednesday, Dec. 3

9 pm Club 141  
Vine St - Lexington

★ ★ KPOL ★ ★

# Holiday Soiree

Food Drag Show Door Prizes

An HIV Prevention Event

Sponsored by



DJ Drag will be spinning  
your favorite R & B and  
Hip Hop Hits

*Speakers*  
**HIV/AIDS Information**

Everyone is welcome  
Come early

*KPOL's Annual  
HOLIDAY SOIREE  
Wednesday, Dec 3*

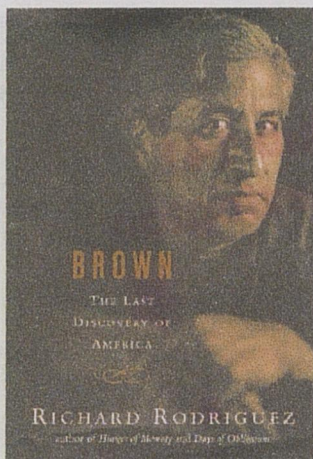
*Club 141*

*141 W Vine Street*

**FREE OF CHARGE**

*Donations of non-perishable  
items for those in need  
appreciated*

For More Informaion Call  
AIDS Volunteers 859 225-3000



**BROWN**  
The Last Discovery of  
America  
By Richard  
Rodriguez  
Book Review and  
Reflections  
by mary crone

Richard Rodriguez is an editor at Pacific News Service in San Francisco, a contributing editor for Harper's magazine, and writes for the Sunday opinion section of the Los Angeles Times. He appears regularly as an essayist on the News Hour with Jim Lehrer on PBS. He has written three books; his latest, *Brown, The Last Discovery of America*, is one that I highly recommend both for his observations, ideas and questions and for his unusual writing style.

It was during an interview with Bill Moyers on his weekly show NOW concerning this third book that I learned that Rodriguez is gay. I was very pleased, saying to myself "Oh, he is part of my family, too." This claiming connection is an interesting thing that many of us do - particularly with people we admire. How we see ourselves as part of particular groups, how we seek connections across difference or because of shared difference, and how we struggle with diversities are all issues Rodriguez explores in his book.

"I write about race in America in hopes of undermining the notion of race in America." He notes that America has traditionally seen its racial makeup as black and white, ignoring the presence of the brown skinned people, many a part of this land before the white man arrived and

many others immigrating here from all parts of the world.

Rodriguez credits Richard Nixon, "the dark father of hispanicity," with coining the term Hispanic, a concept meant to include all people from Middle and South America, Cuba, and other Caribbean Islands. He points out that no one is Hispanic in their country of origin; they become Hispanic here, where we seem to have a need of constantly changing terms of group identity. Rodriguez' parents were described as white on their citizenship papers "by an unimaginative federal agent."

"The price of entering America," Rodriguez writes, "is an acid bath, a bleaching bath - a transfiguration- that burns away memory."

"I write about race in America in hopes of undermining the notion of race in America."

The "melting pot" image of America, less popular now but still favored by many, has never adequately reflected the pressure put on immigrants to set aside their culture. "Acid bath" names that socialization process that forced immigrants as well those brought here in chains to hide, reject and/or feel ashamed of their cultural heritage. To some extent this has happened to the majority of our ancestors, as the experience of assimilating, becoming "white", has left many of us with little knowledge of our heritage or the culture of our ancestors.

Rodriguez writes, "Race is the sine qua non (literally "without which not", meaning "essential aspect") among American transactions. Without race we wouldn't have music, movies, prisons, politics, history, libraries, colleges, private conversations, motives. Dorothy Dandridge. Bill Clinton. Race is America's theme - not freedom, not democracy (as we say in company)."

I am not sure quite how all those items fit together, and that is one of the pleasures of this book. ...continued on next page

Rodriguez's writing is full of startling observations, poetic paradoxes, and fascinating combinations of metaphors, memories, and tangential associations. It is certainly not a book simply about being Hispanic or about race and racism. It is about heterosexism and classism, about beauty and hope, and in the largest sense, it is about America, our history and our potential.

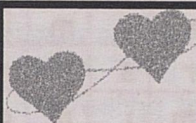
It is difficult to convey the beauty of Rodriguez' writing, so I will end with a longer passage about growing up gay and lonely in America.

"In my youth the musical comedy soliloquy was the perfect vehicle for blocked homosexual emotion - self-effacing epiphanies, reconciliations to disappointment. Vows. The song about how much I love him but he'll never know it.

And he never did."

"Musical comedy songs were more real than my life because they were articulate and because they had ligaments of narra-

tive attached to them. For today's young queers and lonelysts these songs must seem quaint and campy and not useful. But they were never campy for me - for us? ... It became necessary to distance ourselves from memories of a solitude so comic, perhaps, and yet so rich and so holy. Once you have fit your own emotion to these words, the words will forever after find your emotion; will, at some unforeseen time, explain your emotion to you, unbidden."



*"Keep the love you find,  
Get the love you want."*

Jessica Bollinger LCSW

Certified Imago Relationship Therapist  
couples, family, individual

[imagoconnection.com](http://imagoconnection.com) 859-552-6533

# Bluegrass Fairness



Promoting equality for all people regardless of their sexual orientation or gender identity in sixteen central Kentucky counties.

Happy Holidays  
and  
A Prideful New Year

P.O. Box 22032  
Lexington, Kentucky 40522  
859-806-4114

[www.bluegrassfairness.org](http://www.bluegrassfairness.org)  
[www.kentuckyfairness.org](http://www.kentuckyfairness.org)  
[info@bluegrassfairness.org](mailto:info@bluegrassfairness.org)



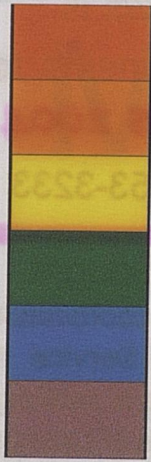
**Pop The Question**  
**Word Find**  
 Created by Reinette Jones

t	t	o	y	s	e	u	q	i	p	u	b	i	c	g	t	o	p	s	g
h	i	t	c	h	p	m	g	b	e	g	l	u	b	u	d	s	t	o	p
e	e	r	a	y	u	i	m	h	s	t	r	u	m	l	d	n	s	p	l
f	y	u	b	e	s	t	u	e	b	r	a	b	i	p	e	d	l	p	i
i	l	s	i	n	s	u	s	q	f	r	s	d	o	r	s	a	l	i	c
r	b	t	l	a	u	x	e	s	i	b	h	b	a	b	e	d	i	e	k
s	b	r	e	a	k	u	p	s	i	t	h	p	s	s	i	k	u	s	e
t	u	r	c	c	i	r	e	m	i	h	c	e	r	v	i	x	q	t	r
t	b	l	o	v	e	r	s	i	r	o	t	i	l	c	e	h	c	a	u
i	x	a	o	c	o	m	i	n	g	o	u	t	d	n	a	h	t	a	b
m	a	d	l	a	t	n	e	d	s	o	b	o	n	o	b	a	r	s	s
e	s	c	r	e	a	m	e	d	n	a	i	b	s	e	l	c	i	c	i

Find the following words within the puzzle.  
 Words are spelled backward, forward, up, down, and diagonal.

- |               |            |         |           |
|---------------|------------|---------|-----------|
| <u>a</u> bed  | celibacy   | hitch   | screamed  |
| ache          | cervix     | hyena   | sith      |
| <u>a</u> rise | chimeric   | icicle  | soppiest  |
| babe          | clitoris   | kiss    | stop      |
| barbe         | coax       | lesbian | strum     |
| bars          | coming out | licker  | the first |
| bath          | cry        | lovers  | time      |
| beg           | cuddle     | parents | toys      |
| bisexual      | dental dam | piques  | trust     |
| bonobos       | dildo      | plug    | tux       |
| breast        | dorsal     | pubic   | ugh       |
| break up      | ebb        | puss    | yare      |
| bubbly        | femme      | quills  |           |
| bulge         | gspot      | quips   |           |
| bumps         | hand       | rash    |           |
| butch         | hiss       | rubs    |           |

There are 11 underlined letters in the list. Arrange the letters so that they form a question. Can you find the question in the puzzle?



Couples  
Counseling

Union  
Ceremonies

## Rev. Kenneth Waibel

Professional Spiritual Direction

*Ecumenical \* Holistic \* Inclusive*

216 Young Dr.  
Lex 40505

kypadre@aol.com  
(859) 338-1195

### Gay Spirituality: Icon 4

By Rev. Ken Waibel

As we continue our investigation of what a GLBT Spirituality may look like we come to the fourth of twelve icons or "foundation stones" that appear to be common experiences for the Gay / Lesbian person. These icons help us to better understand the "driving force" or "definition" which shapes the GLBT person's view of self, others and God - the person's Spirituality.

This next icon will come as a surprise to very few GLBT persons. Either from society, family or church (or a combination of the above) the GLBT person usually builds for him or herself a relatively bad self-image. Even in our modern times there are plenty of articles, sermons and attitudes that create within the GLBT child a notion that he or she is "abnormal", not "straight" but curved (queer) in some way. This attitude that is consciously or unconsciously pressed upon our youth (upon us) leads to our fourth icon - the notion of Interiorized Self Hatred. "I am not normal - part of the norm - and therefore "I am not okay". "I wish I was different." "I hate myself."

Such self-hatred concepts lead to self-destructive behavior that can manifest itself in many ways. The #1 cause for sui-

cide among young persons is the fear (or the reality) that they might be gay. How sad it is that an "enlightened" culture such as ours does nothing to drastically lower the number of teen suicides by allowing our children to investigate their sexuality and not be afraid to discuss an orientation that may or may not be real. For those of us who make it through those extremely difficult adolescent years this interiorized self-hatred reveals itself in other ways.

For the gay male person this self-hatred can be seen most clearly in the promiscuity that surfaces in some. In its purest form promiscuity does not deal with the number of partners a person has but with the inability of the person to form a truly intimate relationship. Some gay men never find their "significant other" because they either cannot open themselves up that profoundly or they are never satisfied with who they find (which is really a statement that they are not satisfied with themselves - self-hatred).

For the lesbian, self-hatred manifests itself most often in a fear of what may be labeled "the dreaded fusion" or "enmeshment". The lesbian who has not found love of self may try to find that love manifest in one single individual and assume that she is the "be all and end all" of life.

...continued page 20

This points to a lack of healthy physical and psychological boundaries most often caused by self-hatred.

For many GLBT persons self-hatred manifests in a notion of "martyrdom" - if I do more good things, more people will like me. Some GLBT persons work themselves to death trying to impress upon others their worthiness of love.

These manifestations of self-hatred are certainly seen in the non-gay community as well. Although most of us, thank God, do not manifest these symptoms in an extreme way perhaps our discussion of them will help us better define ourselves and why we react to others (and to God) the way we do.

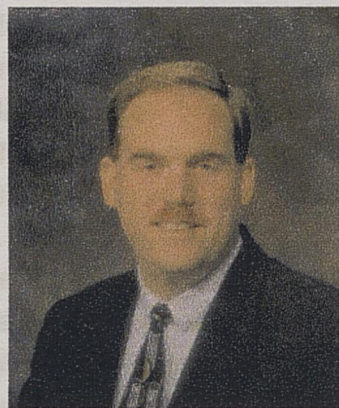
GLSO News is  
signing up Sponsors for  
**GLSO News 2004**

Call Bill at 253-3233

### Volunteers Sought

Jonathan Hull is a coordinator of the Great Leaps Tutoring Service for the Fayette CO. Schools. He is seeking volunteers to work with children in Lexington elementary and middle schools. No previous experience is required. You will be asked to listen to children read and to note their progress. Give Jonathan a call at 227-0728. He is gay friendly.

**The Pride Art Gallery** is actively seeking artists interested in showing their work at the Pride Center. To discuss the possibilities, please call Thomas (859 225-0094) or the Pride Center (859 253-3233.) If you don't have enough work for a complete show we can pair you up with another artist. All artisans welcome. Twenty percent of the proceeds will go to the Pride Center.



## Scott Ackerman

Mobile: 859-338-8483

Voice Mail: 859-294-2055

Office: 859-269-7331

E-Mail: SAckerman4224@aol.com

## Real Estate Service With

**P**ROFESSIONALISM

**R**ESULTS

**I**NTEGRITY

**D**EDICATION

**E**NTHUSIASM



Serving Lexington  
&  
All of Central Kentucky

**Call me with all your Real Estate Needs**

# IMAGINE

Not having to Shave,  
Tweeze, Wax or Go  
Through Electrolysis again.

## New IPL Technology

conveniently removes unwanted  
hair with a flash of light.

Safe - Clean - Effective

## Free Consultation

Call us or visit us today and  
find out more about the  
revolutionary **IPL™** hair  
removal technology.

*Elite Aesthetic Solutions*

*859-335-5566*

[www.hairfreeskin.com](http://www.hairfreeskin.com)

## SOULFORCE PLEDGE OF NONVIOLENCE

Soulforce Lexington has biweekly meetings on the second and fourth Sundays of each month at 7:30 at the home of Jamie McDaniel, call 859 230-5625.

Soulforce teaches the principles of non-violence to confront the "spiritual violence" of some religious organizations against GLBT people. This is one example of a non-violent pledge taken by activists in various non-violent actions.

- \* Our attitude will be one of openness and respect toward all whom we encounter in our actions.
- \* We will use no violence, verbal or physical, toward any person.
- \* We will not destroy or damage any property
- \* We will carry no weapons.
- \* We will not bring any drugs or alcohol, other than for medicinal purposes.
- \* We will not run in public, make threatening motions, or resist arrest.
- \* We will protect those who oppose us

from insult or attack.

- \* We will remain accountable for our actions.

### JB's Place

Looking for a gathering place in the Danville area? Janet has fixed up a space on her property for lesbians 30 years old and up. She has named it JB's Place in honor of her partner who passed on recently.

A social group will be held on Saturdays at 7. JB's Place is at 3159 U.S. Highway 127 South, Danville, Kentucky. If you would like more information, contact Janet at 859-238-7307.

### GLSO News Deadline Dec. 15

**Send news, essays and ads to  
lexingtonglso@yahoo.com  
Put "newsletter" in the subject line  
The deadline is particularly  
important this month! Send It NOW!**

**GLSO operates the Pride Center which cost \$1,250 a month including rent and utilities. We need your financial support to keep the Pride Center open and to continue these projects:**

Pride Library    The Gay Straight Alliance for Youth  
Discussion Group    Young Adult Group    Speakers Bureau  
Pink Pages    Pride Month    Act Out    Dress and Gender Alliance

Name \_\_\_\_\_ Phone # \_\_\_\_\_

Address \_\_\_\_\_

City, State, Zip \_\_\_\_\_

\_\_\_\_\_ \$15 Membership and Newsletter

\_\_\_\_\_ \$20 Couple membership and newsletter

\_\_\_\_\_ \$25 Two year membership and newsletter

\_\_\_\_\_ I would like the newsletter at this reduced rate

\_\_\_\_\_ Additional contribution

Mail to GLSO News PO Box 1172 Lexington, KY 40588



Wishing Happy Holidays To All

Join Us For New Year's Eve 2004!

## The Bar

THE LIVING ROOM LOUNGE...

COCKTAILS & CONVERSATIONS

OPEN MON-SAT 4 PM-1 AM

THE GILDED CAGE CABARET...

ILLUSIONS HOSTED BY CHELSEA PEARL

OPEN THURS-SAT; SHOWTIMES 10 PM & 12 AM

THE JOHNNY ANGEL DISCO...

IN 3D

DRINKS • DANCE • DECIBLES

OPEN WED -THURS 11 PM-1 AM, FRI - SAT 10 PM-1 AM,

WITH AFTERHOURS ON FRI. & SAT. TILL 3:30 AM

New Year's Eve Wed. Dec. 31st



224 E. Main St • 255-1551 • Must be 21 years old with ID

# GLSO Directory

## GLSO Board

GLSO Pride Center . . . . .253-3233  
 GLSO Board (Thomas) . . . . .225-0094  
 GLSO Discussion Group (Bill) . . . . .253-3233  
 GLSO News (Mary) . . . . .266-5904  
 Subscriptions (Bill) . . . . .253-3233  
 GLSO Speakers Bureau (Mary) . . . . .266-5904  
 Youth Gay Straight Alliance (Mary) . . . . .266-5904  
 GLSO on Line . . . . .lexingtonglso@yahoo.com  
 www.bluegrasspride.org  
 Pride Gallery . . . . .225-0094

## Student Groups

EKU(Sue) . . . . .  
 UK Lavender Society c\_violet\_skies @ yahoo.com  
 Morehead State University (Ned) 606-783-2294  
 UK Lambda (Sara & Dave) . .info@uklambda.com  
 Berea College ACE League (Dale) .859-985-3633  
 Centre College (BGLAD-Mykol) . . . . .238-5332

## Anonymous HIV Testing

Jessamine County . . . . .885-4149  
 Lexington-Fayette County . . . . .288-2437  
 Madison County . . . . .859-723-7312  
 Woodford County . . . . .873-4541  
 U.K. Adolescent Medicine . . . . .323-5643

## HIV/AIDS Info/Services

AIDS Volunteers, Inc . . . . .225-3000  
 Lexington Health Department (Julie) . . .288-2362  
 HIV/AIDS Legal Project . . . . .502-584-1254  
 HIV Support (Somerset) . . .679-7478 or 678-5814  
 Cumberland Region (SEKY-Pat) . . .606-864-3776  
 or 888-425-7282  
 Barren River Region . . . . .800-559-4448  
 Louisville Region (Geri) . . . . .502-574-0161  
 Northern Kentucky Region . . . . .859-341-4264  
 Purchase Region . . . . .800-522-8289  
 Moveable Feast . . . . .252-2867

## Community

Alcoholics Anonymous (Brian) . . . . .619-5294  
 Office . . . . .276-2917  
 AL-Anon (Office) . . . . .277-1877  
 Bluegrass Belles . . . . .502-346-5298  
 C.O.L.T.S. (Morris) . . . . .225-9169  
 Bluegrass Fairness . . . . .859-806-4114  
 Council for Peace and Justice  
 (Richard) . . . . .277-6101  
 Fairness of Louisville . . . . .502-893-0788  
 First Link (was Ask-Us) . . . . .313-5465  
 International Gay Bowling (Steve) . . .276-3058  
 Imperial Court of KY  
 bluegrassempire@hotmail.com  
 KY Leather Productions (Larry) . . . . .253-0185

Kyians For The Commonwealth . . . . .254-3585  
 jlynjenks@msn.com  
 Lexington Lyons Leather/Levi Club  
 (Thomas) . . . . .272-0408  
 Lexington Dress & Gender Alliance . .433-8388  
 Lexington Human Rights Commission 252-4931  
 Lexington Men's Chorus (Kenneth) . .255-1974  
 Louisville Youth Group . . . . .502-894-9787  
 Men of all Colors Together (Jon) . . . . .351-4453  
 mactky@aol.com  
 Moonshine Bears of KY. (Hal) . . .859 294-7944  
 . . . . .www.mooshinebears.com  
 People for Unity and Fairness . . . . .803-1130  
 . . . . .CUFCKT@aol.com  
 Pride Alliance of Central KY(Gary) 859-236-4547  
 (Shane) . . . . .859-854-0596  
 Pridealliance@yahoo.com  
 PFLAG (Ed) . . . . .859 200 9512  
 Pegasus Travel . . . . .253-1644  
 Rainbow Bowling League (Steve) . . .276-3058  
 Sistersound (Patti) . . . . .268-0113  
 . . . . .paowens@excite.com  
 Sistahs in the Life (Joan) . . . . .252-2657  
 24 hr. Crisis Line . . . . .1-800-928-8000  
 24 hr. Teen Crisis Line . . . . .1-800-999-9999

## Religious Groups

Dignity (Don) . . . . .299-4458  
 Interweave (Unitarian-Mary) . . . . .266-5904  
 Integrity (Episcopal-Rev. Stone) . . . . .277-7511  
 MCC-Elizabethtown (Rev.Cathy) . . .888-340-6223  
 MCC-Louisville (Rev. Dee) . . . . .502-587-6225  
 MCC-Paducah (Rev. Lillian) . . . . .270-443-3339  
 Norse Pagan Community (Rev. Pat) . . . .268-1640  
 KY Pagan Forum . . .http://go.to/kypaganforum/  
 RainbowWind (Pagan-Sarah) . . . . .273-2455  
 Soulforce (Jamie) . . . . .859-230-5625  
 www.SoulforceLexington.org  
 St. Augustine's Chapel  
 (Episcopal-Rev. Chris) . . .254-3726  
 St. Mykol (Independent Catholic) (Rev. Ken) . .  
 . . . . .389-9418  
 Open Door (Christian-Rev. Pam) . . . .396-7636  
 Wiccan/Pagan Group . . . . .(Iggie) 492-9904

## NEWS DEADLINES

**We have to have articles and ads  
 in on time this month!!  
 and corrections to directory:  
 Articles and Ads: DEC. 15  
 Put Newsletter in subject line  
 marycrone@aol.com  
 lexingtonglso@yahoo.com**