



L.H. STEVENS



STANLEY POWELL



W.B. GESS



A.J. ASHER



R.E. STEVENS



G.J. RICE

# CLASS OF 1930



A.V. FOX



W.H. CECIL



ROBERT ODEAR

# COLLEGE OF LAW UNIVERSITY OF KENTUCKY



M.P. WALLACE



C. BYRON



J.P. CROSBY



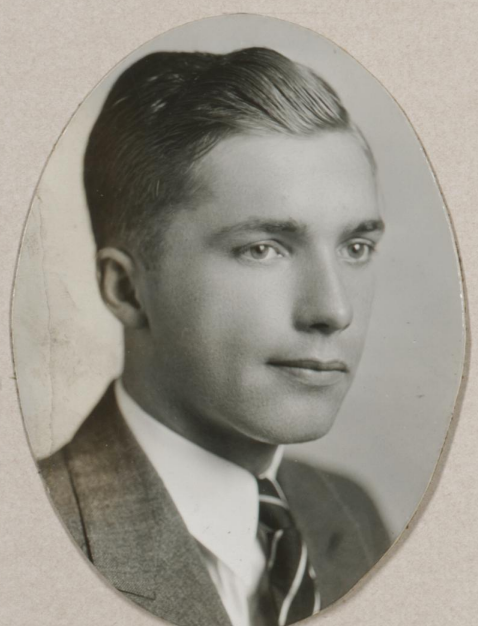
W.R. HODGEN



D.M. GRIFFITH, JR.



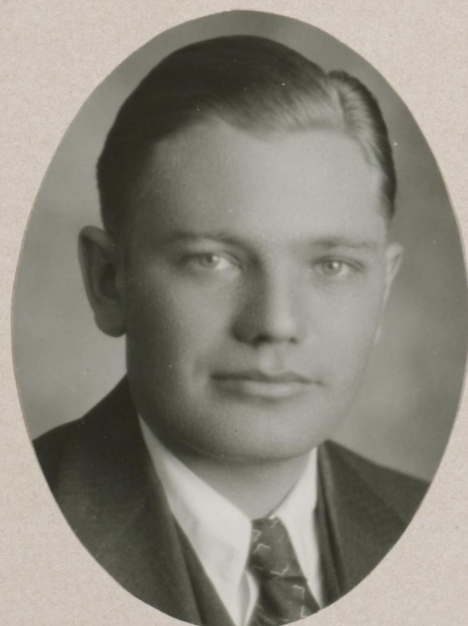
E.E. ADAMS



W.H. BUCKLES



W.C. WRIGHT



C.E. BARNES



H.V. McCHESNEY, JR.



J.C. FINLEY