



ALAN ROBINS



JOHN L. WARD



B. K. SHEPHERD



D. P. MOLONEY

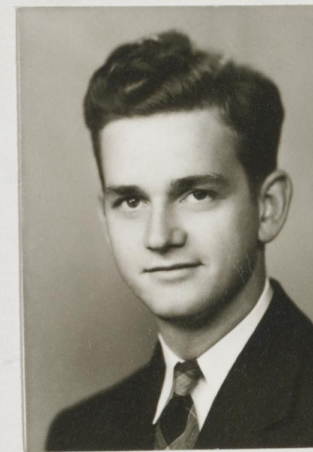


J. B. NELSON

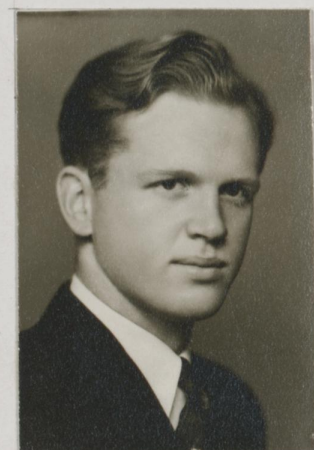


ELMOND MARTIN

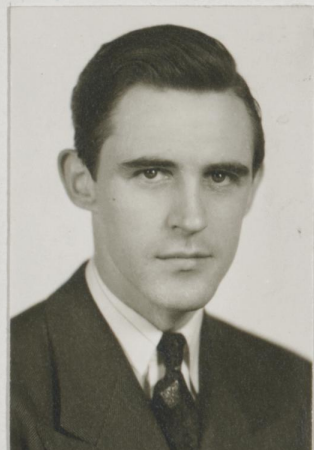
# COLLEGE OF LAW - CLASS OF 1942 UNIVERSITY OF KENTUCKY -



PHIL K. PHILLIS



JOHN S. BOLES



CHAS. V. SHIPLEY



G. F. KNUCKLES



JOHN H. CLARKE



HIRAM M. BROCK



SQUIRE WILLIAMS, JR.



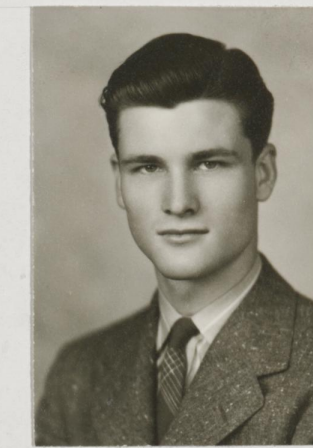
SAM B. NEELY



MARY B. JACKSON



JAS. W. HOWELL



ROY N. VANCE, JR.

W. T. COMISKEY    JOHN A. FULTON    CHARLES LANDRUM    C. HOMER NEIKIRK  
MAHLON SHELBOURNE    ROBERT M. STEVENSON    JAMES W. WINE, JR.