



J. J. McBRAYER



J. P. REYNOLDS



J. S. SHERWOOD



S. H. MORTON



C. R. BARKER



F. W. DEMPSEY

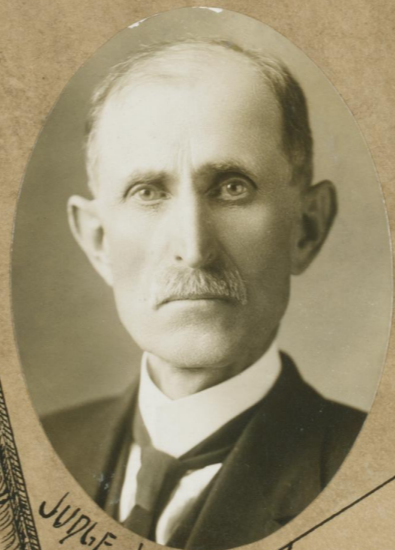
COLLEGE OF LAW CLASS OF 1918



M. M. ATCHISON



JUDGE CHALKLEY



JUDGE LAFFERTY



A. L. NORTHCUTT



BEN. H. SCOTT



C. R. RAMSEY



G. C. BRADLEY



VIRGIL CHAPMAN

