



N. MOORE



E.E. HARDIN



W.B. MARTIN



T.D. GRUBBS



J.W. MCKENZIE



E.S. DABNEY

# College of Law



M.C. REDWINE



H.P. HALEY



JUDGE L. CHALKLEY



JUDGE W.T. LAFFERTY



PROF. G.W. GOBLE



R.M. PARITZ



E.S. DUMMITT



C.P. MABRY

# University of Kentucky Class 1920



D.C. ROSS



J.P. CHERRY



J. PARK



H.E. HICKS



G.W. HOGAN



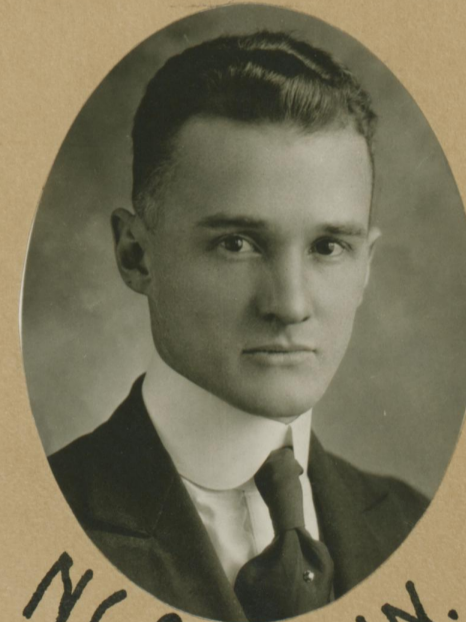
C.H. HEAVRIN



J.W. HOWARD



G.D. DOWNING



N.G. SULLIVAN



H.M. BLAKEY



E.E. RICE



S.K. HICKS



O.C. GARTIN



O.C. WALKER



C.A. LISABNY