



-R.M. MORELAND-



-G.W. MEUTH-



-CALVIN LISMAN-



-JOHN R. BAYS-



-GILMORE KEOWN-



-CHLOE GIFFORD-



-J.B. NICKELL-



-H.E. HOFFMAN-

COLLEGE OF LAW CLASS OF 1923 UNIVERSITY OF KENTUCKY



-THOS. BRUGE FULLER-



-C.R. LIPE-



-EARL WINTERS-



-E.M. HEAVRIN-



-J.S. CAUDEL-



-T.E. SPARKS-



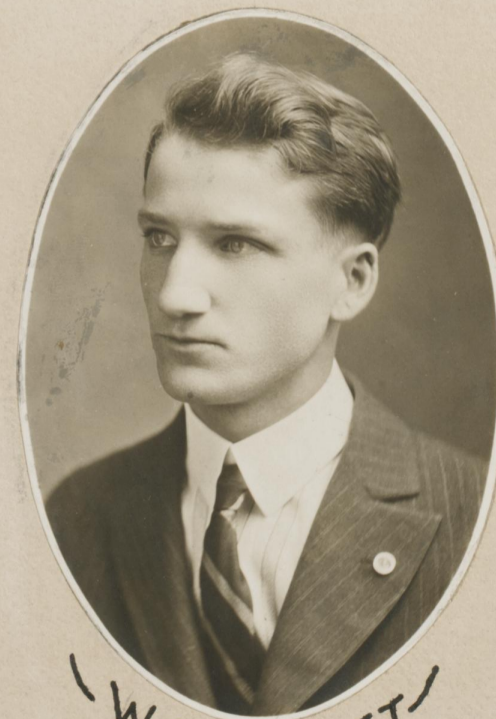
-W.H. SMITH-



-ROY SHEHAN-



-WILLIAM KIRTLEY-



-W.C. PICKETT-



-JOHN L. HAYS-