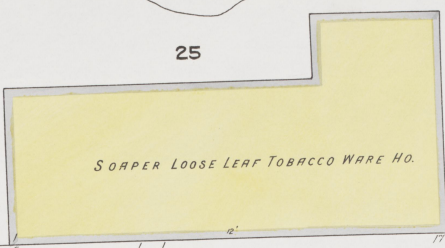
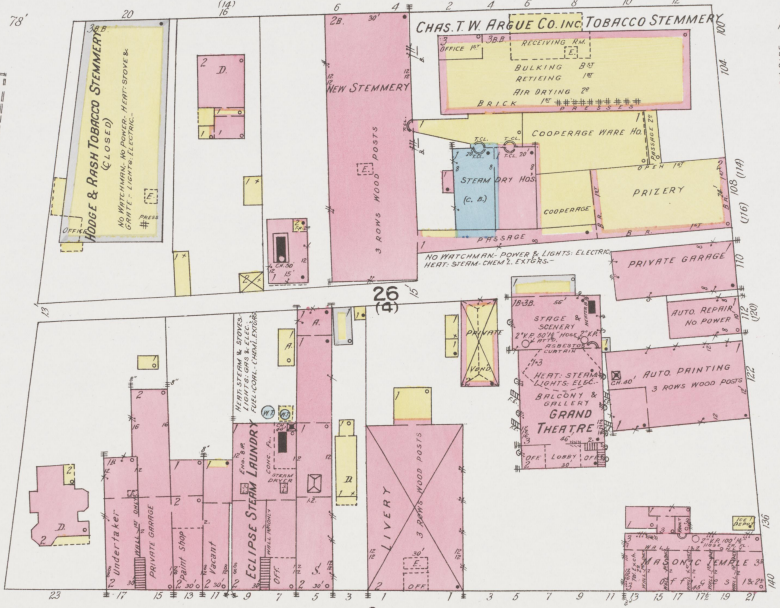


MAY 1923
HENDERSON
KY.

OHIO RIVER BEYOND



S. WATER S. → | ← N. N. WATER



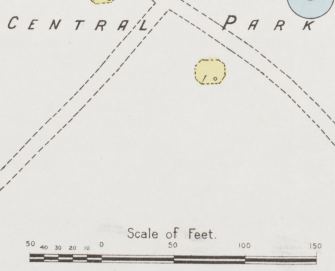
18

3

S. MAIN S. → | ← N. N. MAIN

WASHINGTON ST.

1ST ST.



S. ELM S. → | ← N. N. ELM

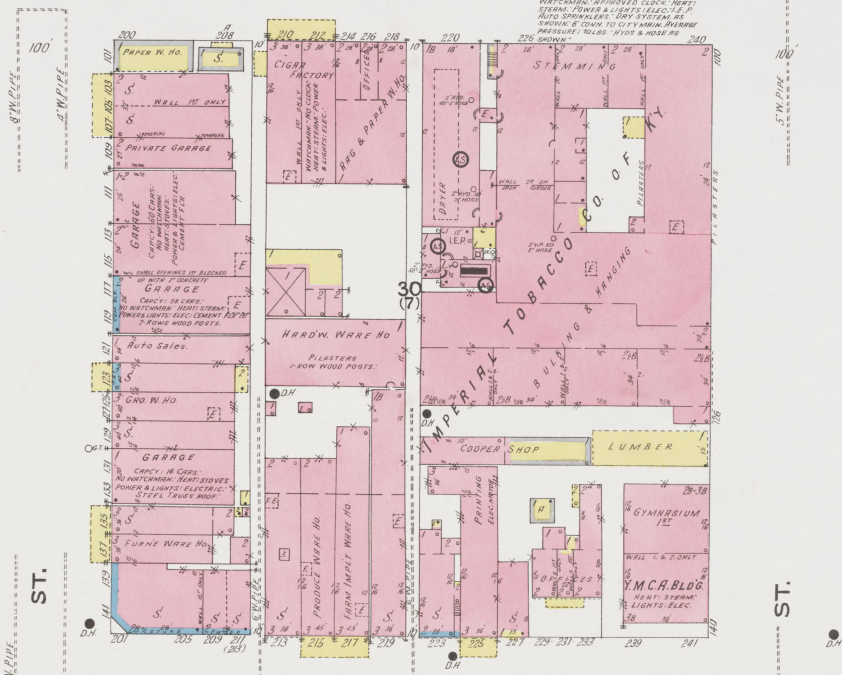
5

WASHINGTON ST.

1ST ST.

C I T Y W H A R F

N. WATER

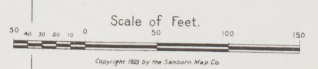


WATCHMEN, APPROVED CLOCK, NIGHT STAIRS, POWER & LIGHTS SELECTED BY ARCHT. SUPERVISOR. ONLY SYSTEMS BE SHOWN & DOWN TO CITY MAIN AVERAGE PRESSURE 10 LBS. WATER & SEWER 10" SHOWN.

3

7

N. MAIN



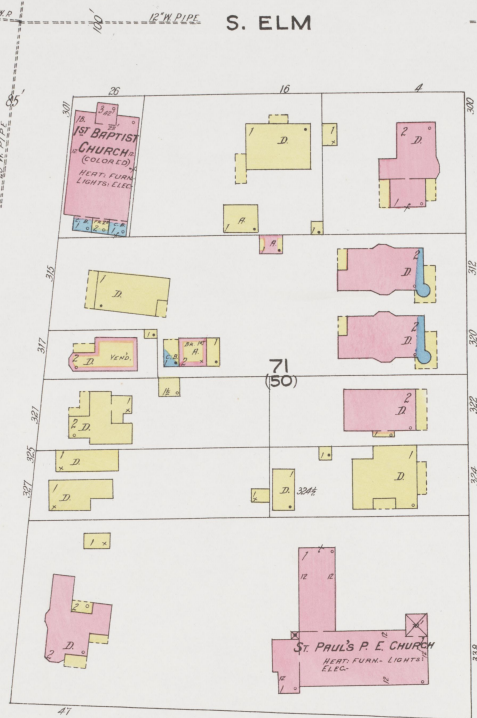
N. ELM

5

2

5

MAY 1923
HENDERSON
KY.



21

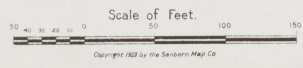
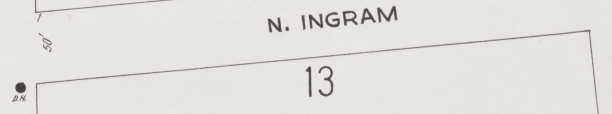
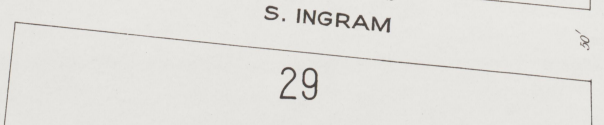
S. GREEN

N. GREEN

6



CENTER



MAY 1923
HENDERSON
KY.

3

4

6

N. ELM

73
(23)

74
(22)

5

N. GREEN

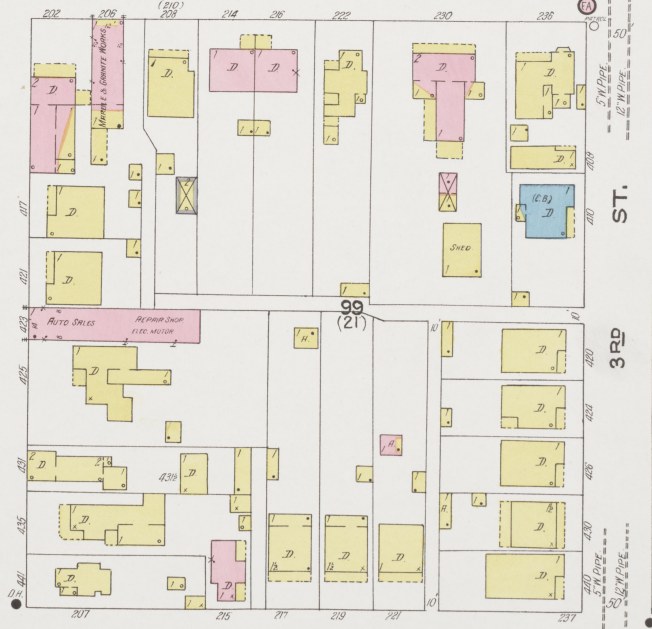
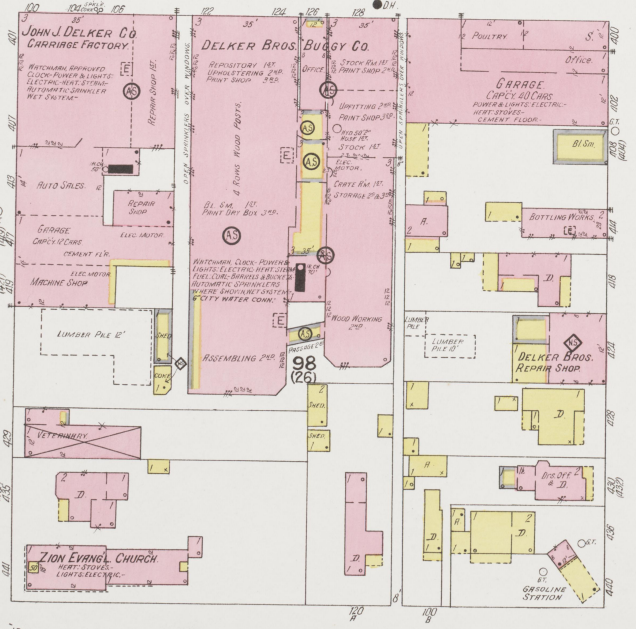
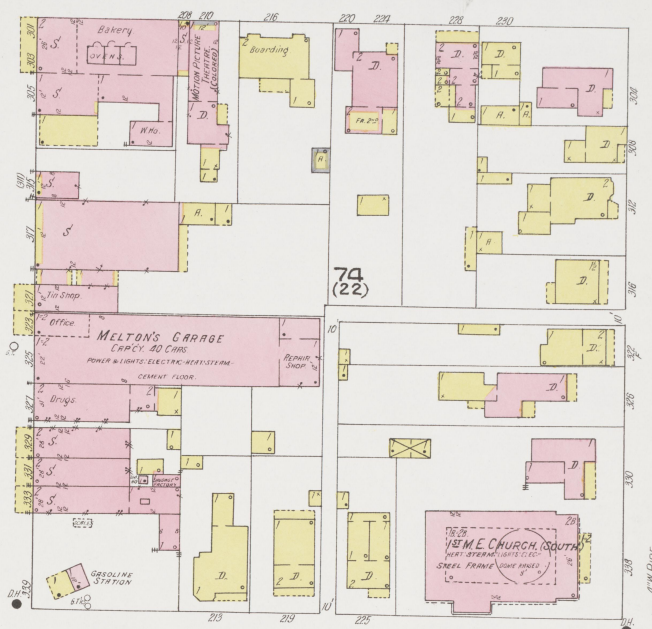
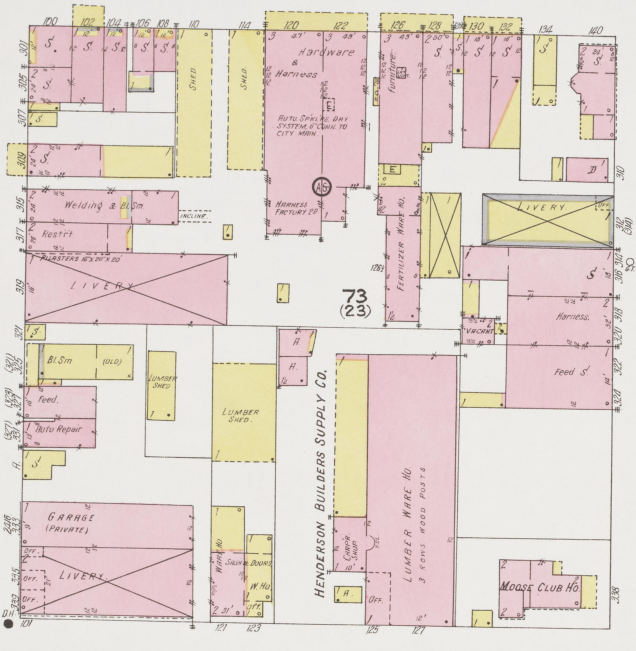
1ST ST.

2ND ST.

ST.

3RD

10

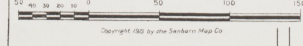


13

14

N. INGRAM

Scale of Feet



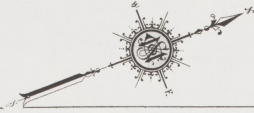
Copyright 1923 by the Standard Map Co.

7

7

P A R K

29



MAY 1923
HENDERSON
KY.

33

N. WATER

N. MAIN

N. ELM

W. HARR

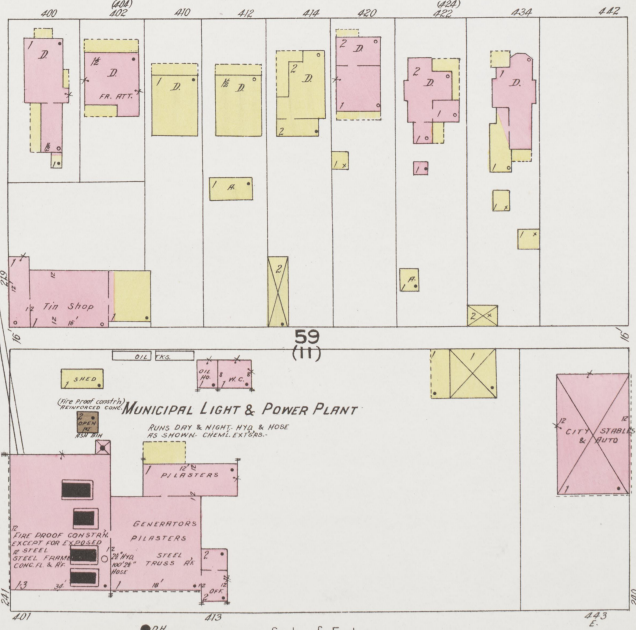
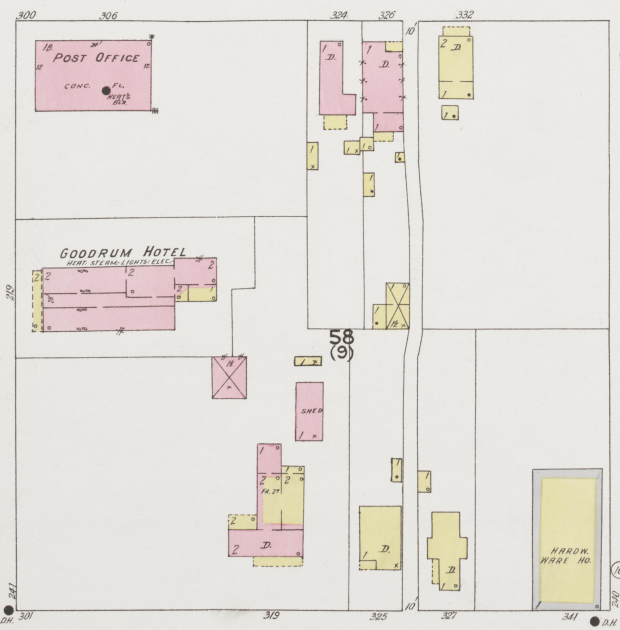
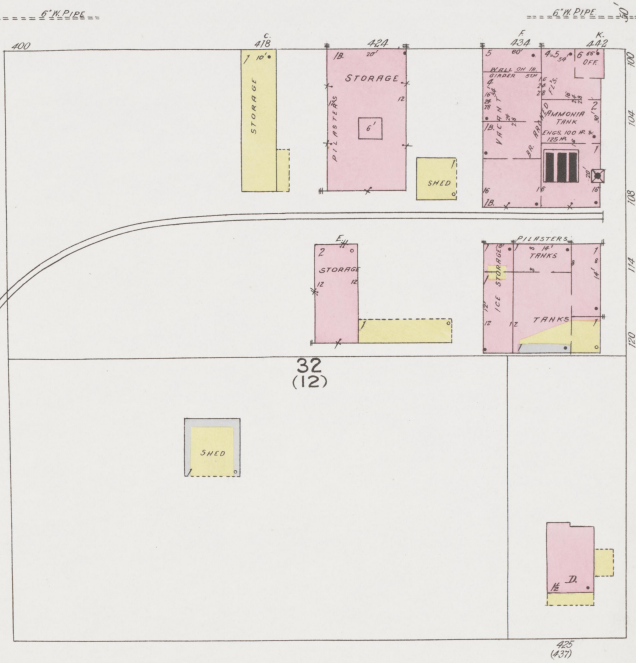
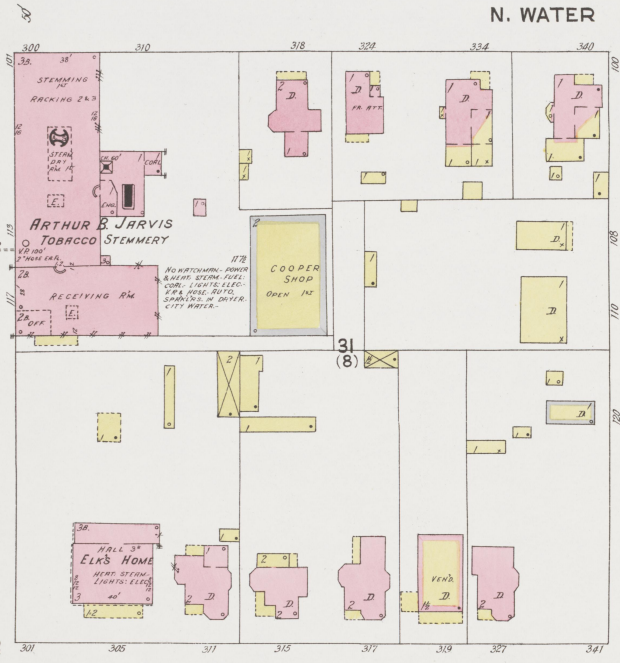
4 ST.

3 RD.

ST. RETAILING
ST. RETAILING
ST. RETAILING

8 ST.

5 TH



10

2

8

8

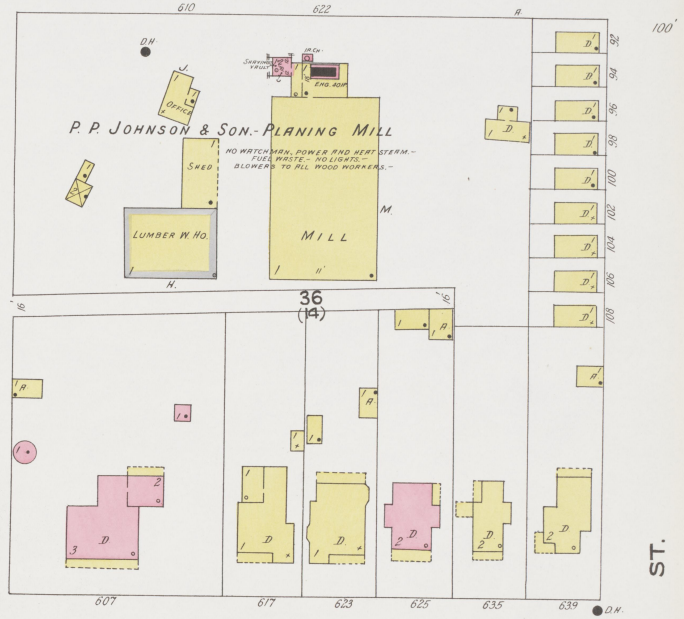
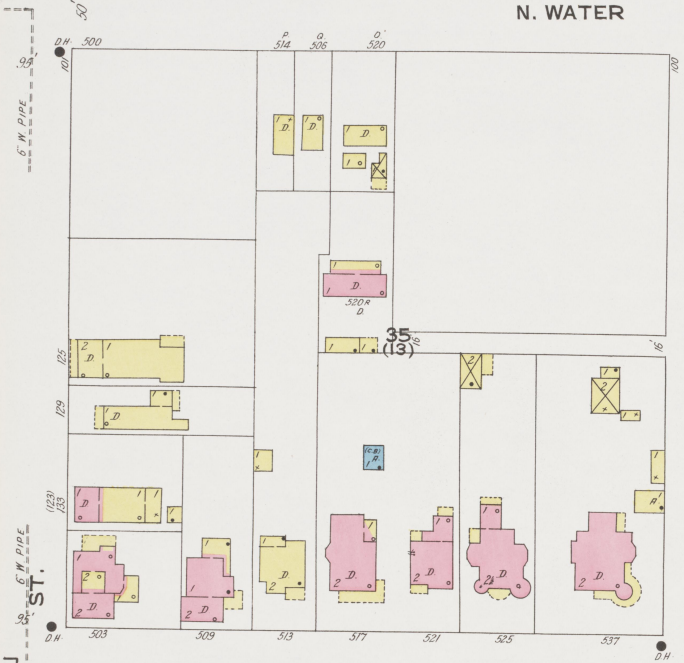
SIDING OHIO RIVER BEYOND

MAY 1923
HENDERSON
Ky.

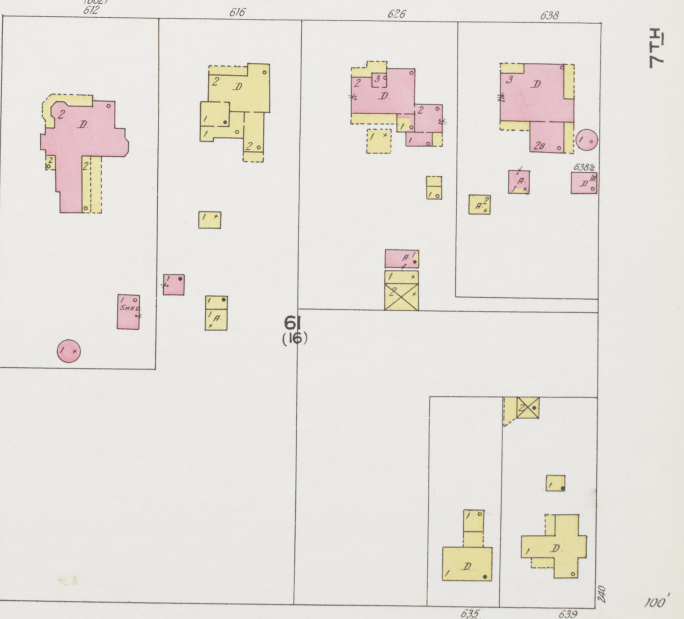
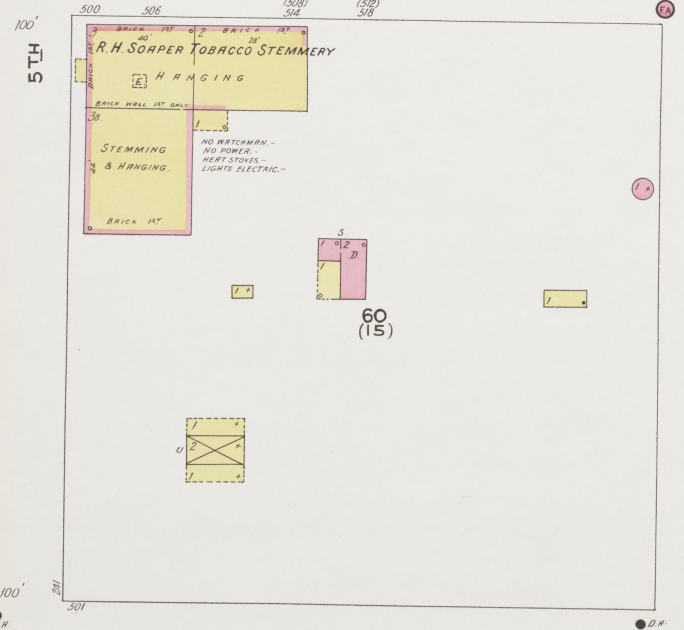


34

N. WATER

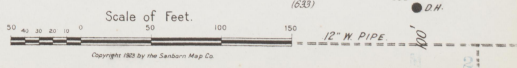


N. MAIN



N. ELM

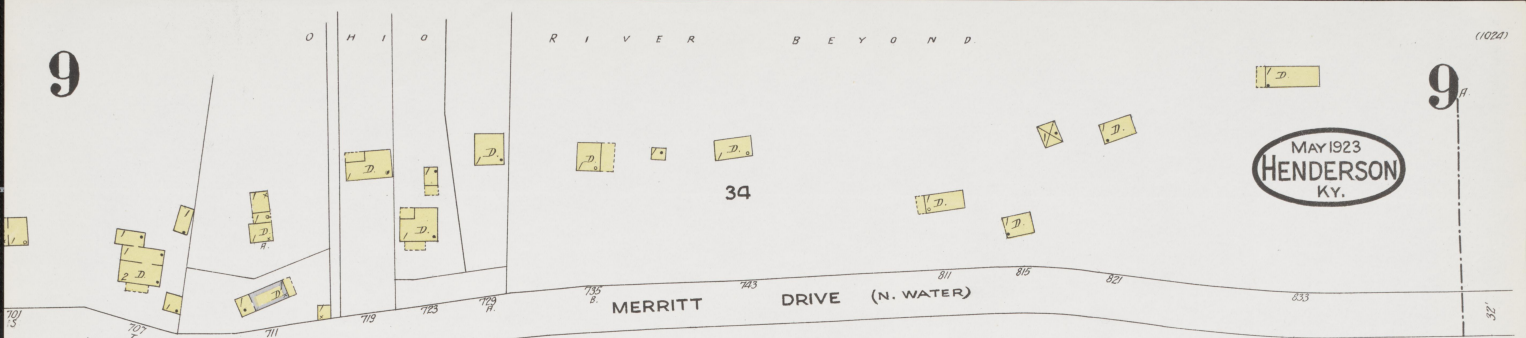
11



9

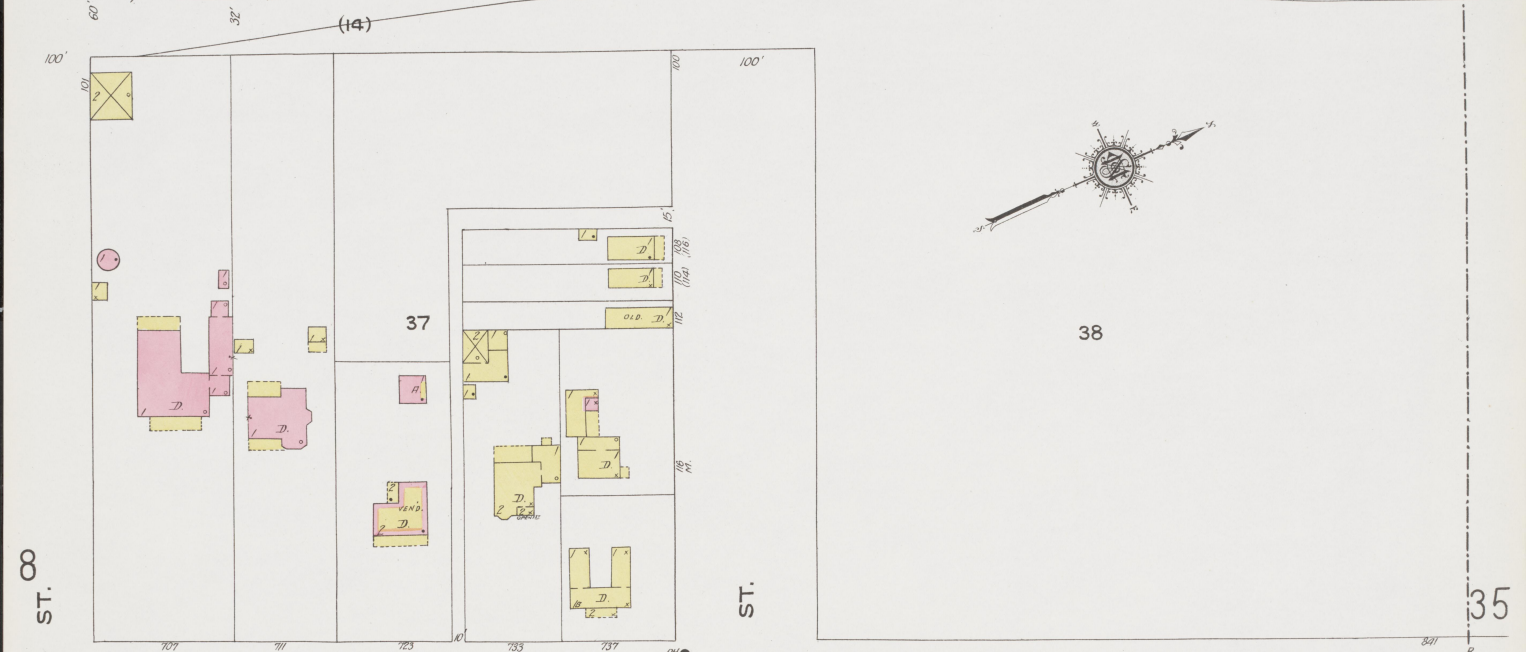
(1024)

9



MAY 1923
HENDERSON
KY.

MERRITT DRIVE (N. WATER)



38

37

8TH ST.

8TH ST.

9TH ST.

35



7TH ST.

8TH ST.

8TH ST.

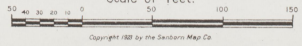
9TH ST.

N. MAIN

N. ELM

12

Scale of Feet.



Copyright 1922 by the Seaboard Map Co.

10



N. ELM

ST.

3 RD

6

ST.

3 RD

ST.

14

N. GREEN

N. INGRAM

75
(10)

100
(20)

MAY 1923
HENDERSON
KY.

10

(1024)

ST.

5TH

ST.

34

ST.

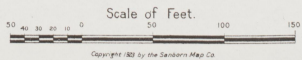
11

ST.

5TH

34

FARMER'S LOOSE LEAF
WARE HOUSE CO
TOBACCO WARE HO.



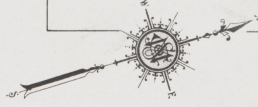
Copyright 1923 by the Standard Map Co.

11

8

MAY 1923
HENDERSON
KY.

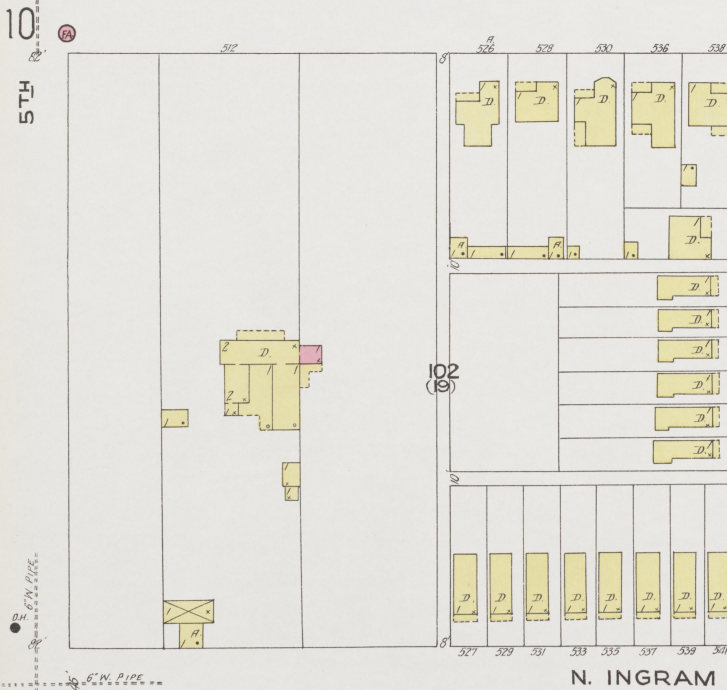
11



N. ELM

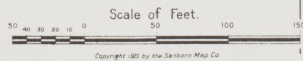


N. GREEN



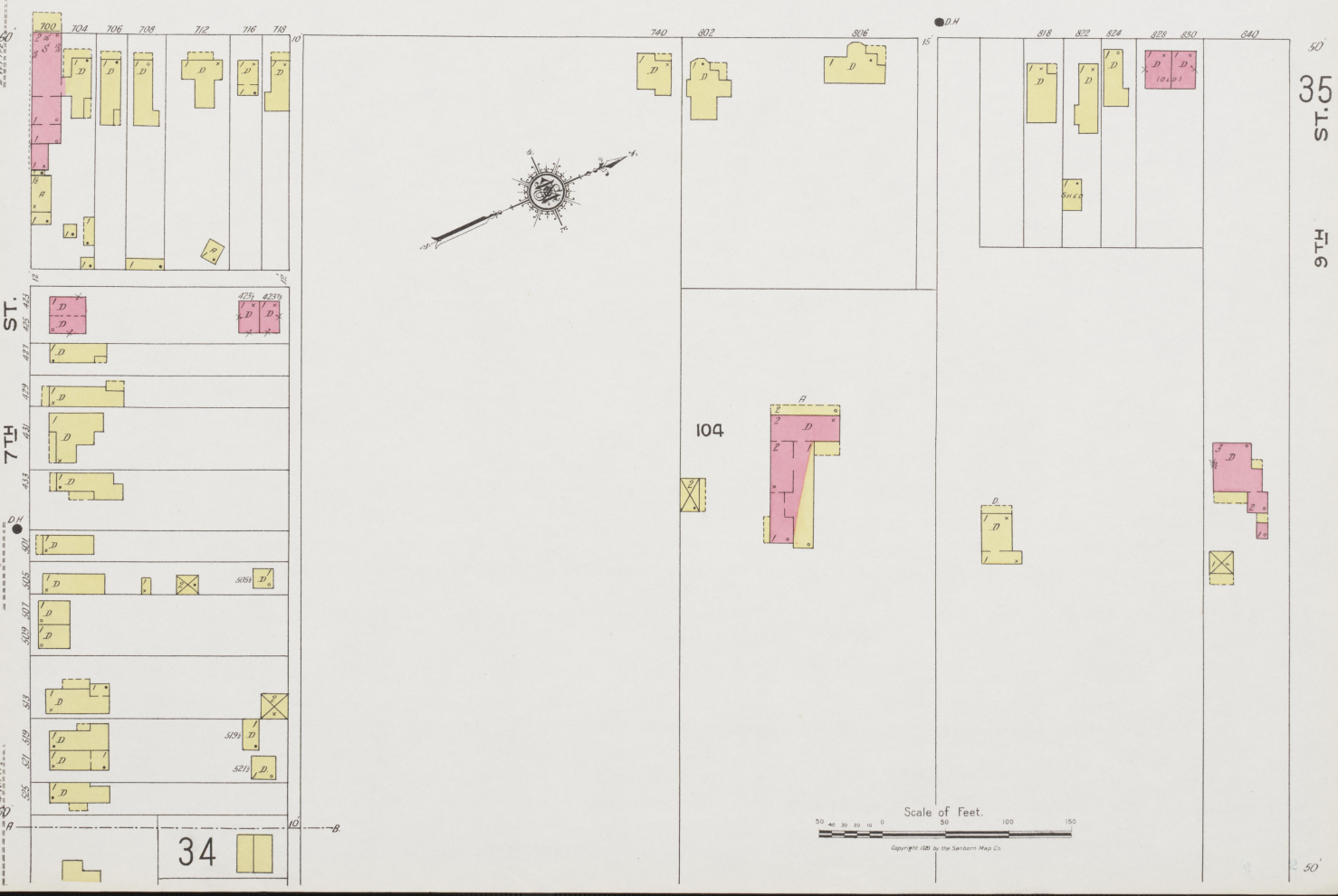
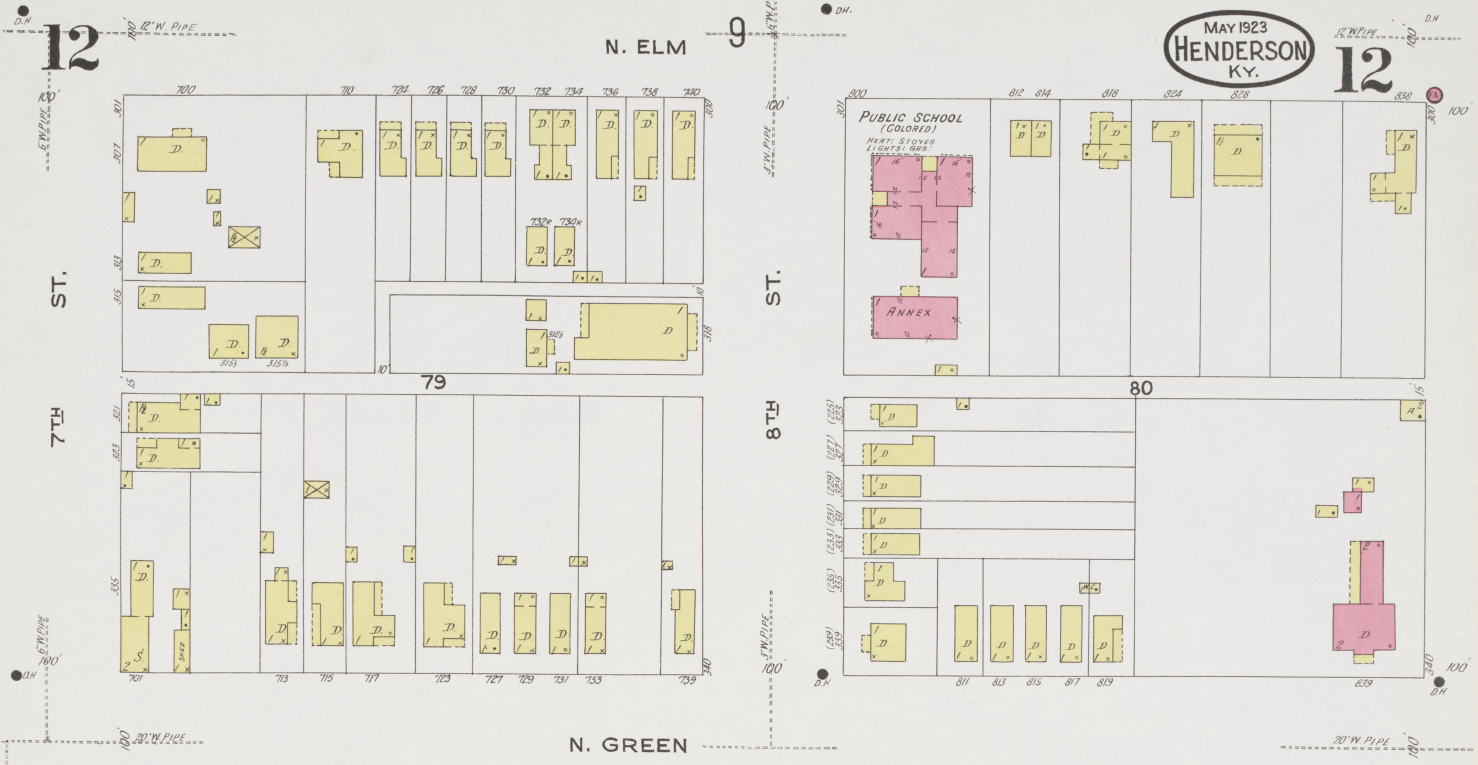
N. INGRAM

34

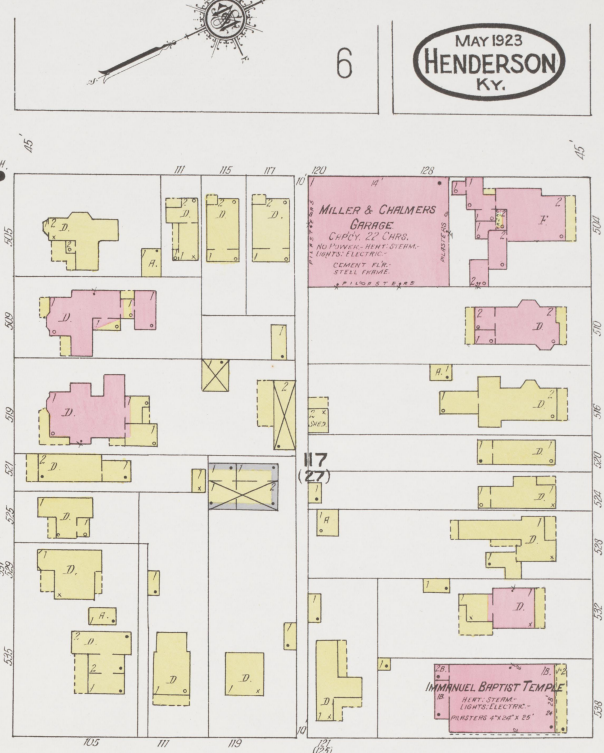
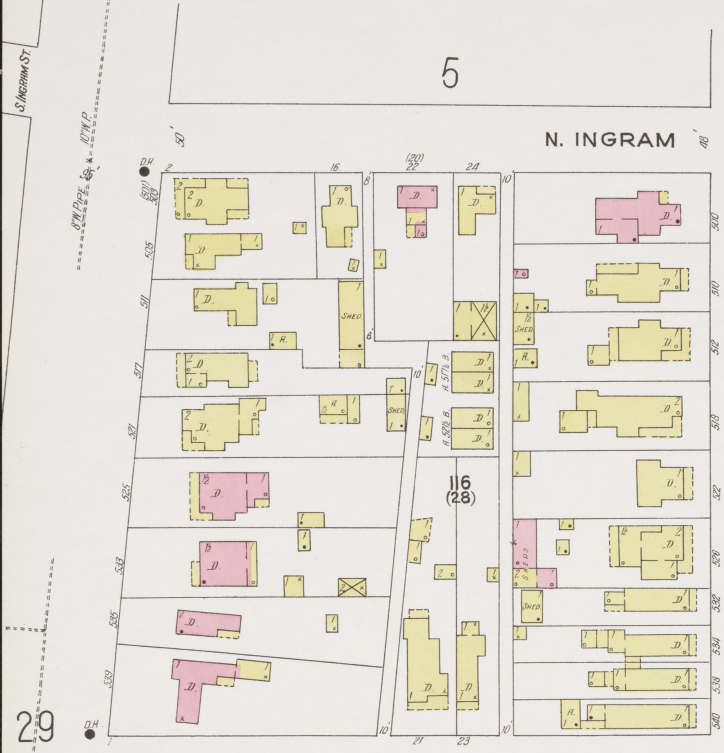


Copyright 1923 by the Sanborn Map Co

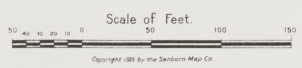
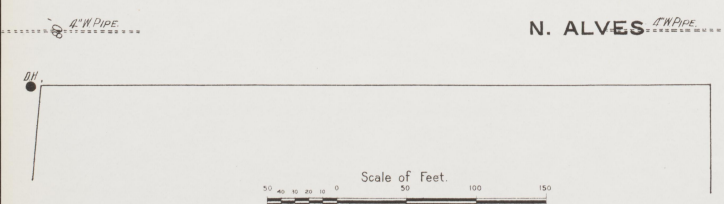
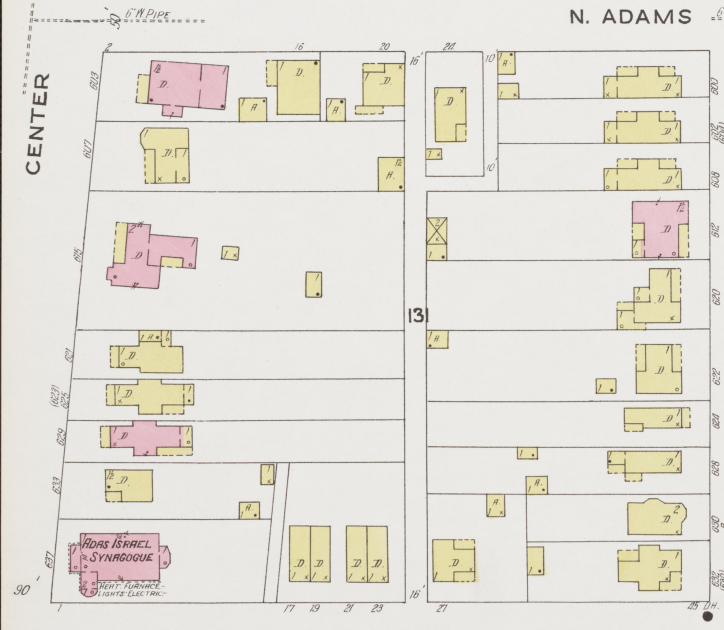
MAY 1923
HENDERSON
KY.



Scale of Feet.
0 50 100 150
Copyright 1923 by the Sandborn Map Co.



MAY 1923
HENDERSON
KY.





6

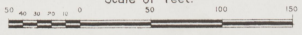
10

MAY 1923
HENDERSON
KY.



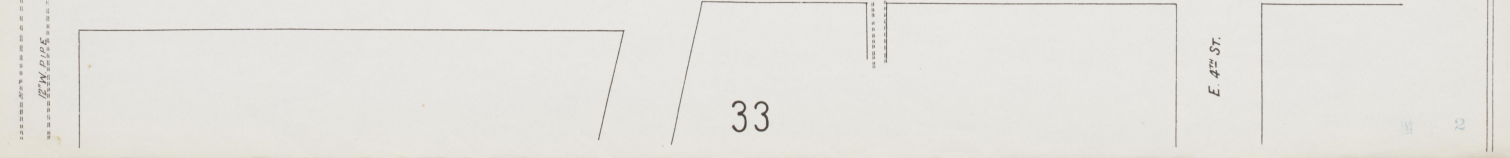
15

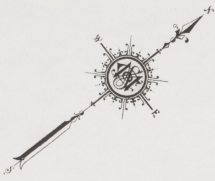
Scale of Feet.



Copyright 1922 by the Sanborn Map Co

MAY 1923
HENDERSON
KY.





24

17

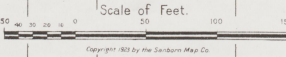
JACKSON

AUDUBON

LEIGH

JEFFERSON

19 S. ELM



WATCHMAN: APPROVED CLOCK, POWER & HEAT; STEAM LIGHTS; ELECTRIC FUEL; COAL; AUTO SPARKS; THROUGH-DAY SYSTEM; CITY WATER; CORK-WOOD; OIL TANK.

NIGHT & SUNDAY WATCHMAN: APPROVED CLOCK, POWER & HEAT; STEAM; FUEL; COAL; LIGHTS; ELECTRIC; CITY WATER; A.S.P.; A. ROSE 'S SHOWN.

NO WATCHMAN; HEAT; STEAM; POWER; FUEL; COAL; CORK; EXTERIOR; BARRELS & BUCKETS.

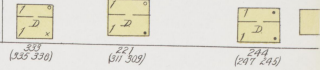
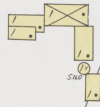
NO WATCHMAN; HEAT; STEAM; FUEL; COAL; LIGHTS; ELECTRIC; FUEL; COAL; EXTERIOR; BARRELS & BUCKETS.

17

17

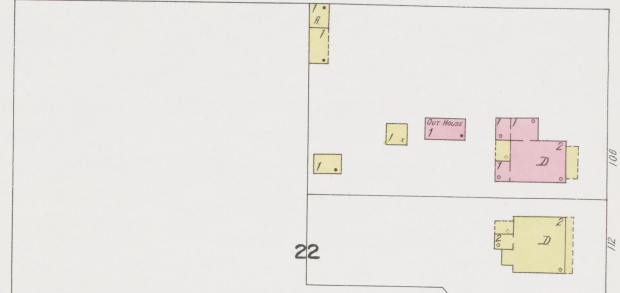
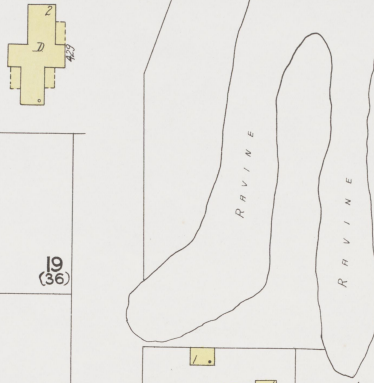
MAY 1923
HENDERSON
KY.

LINE OF RIVER OHIO RIVER - BEYOND



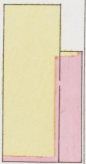
20

S. WATER



22

16



19
(36)



18

S. MAIN



51
(37)

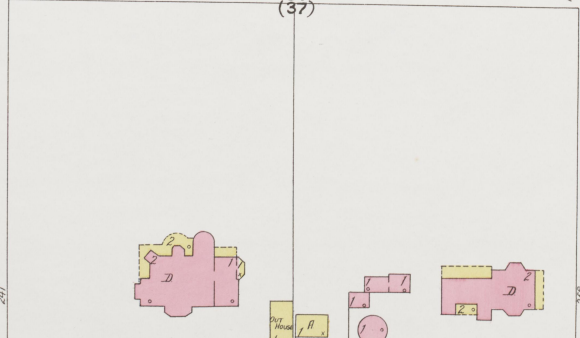
DIXON



52

CLAY

JEFFERSON

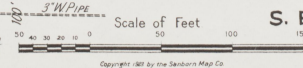


S. ELM



S. ELM

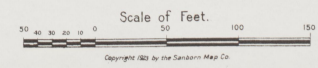
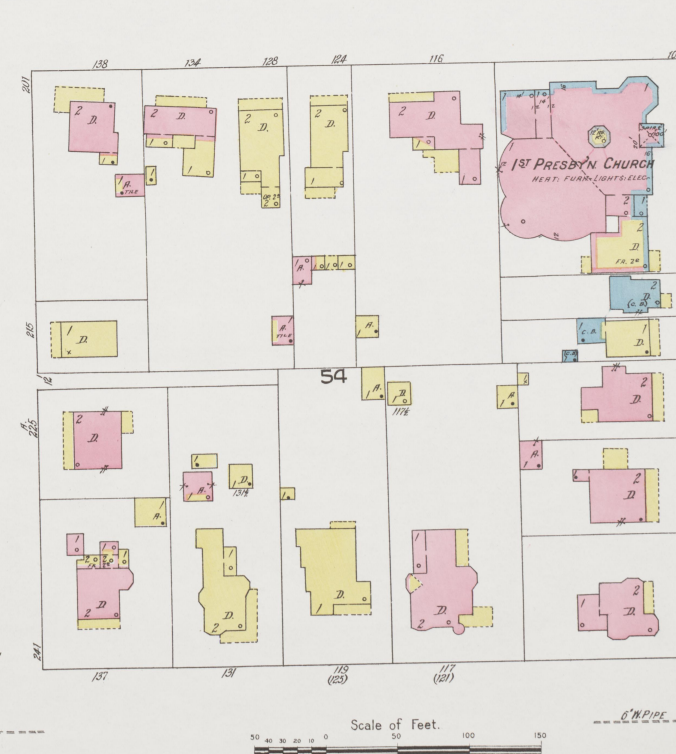
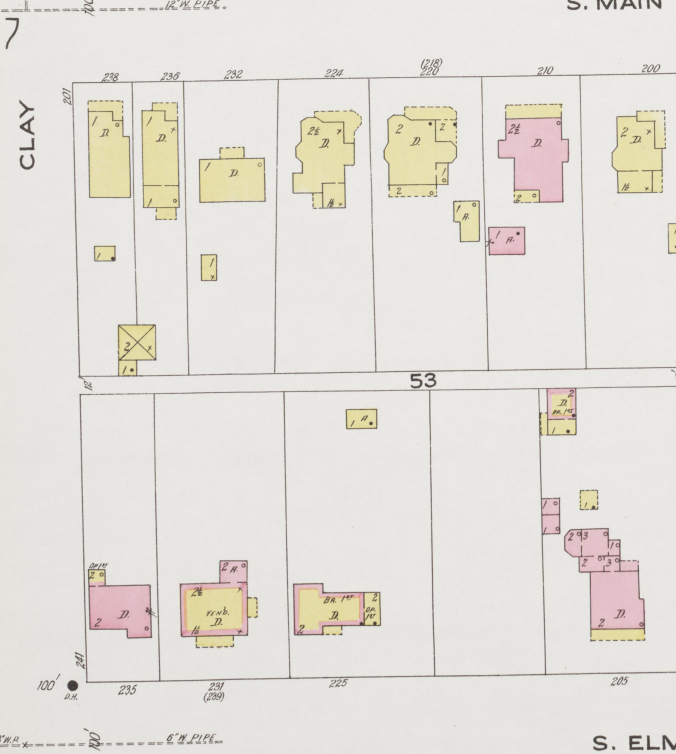
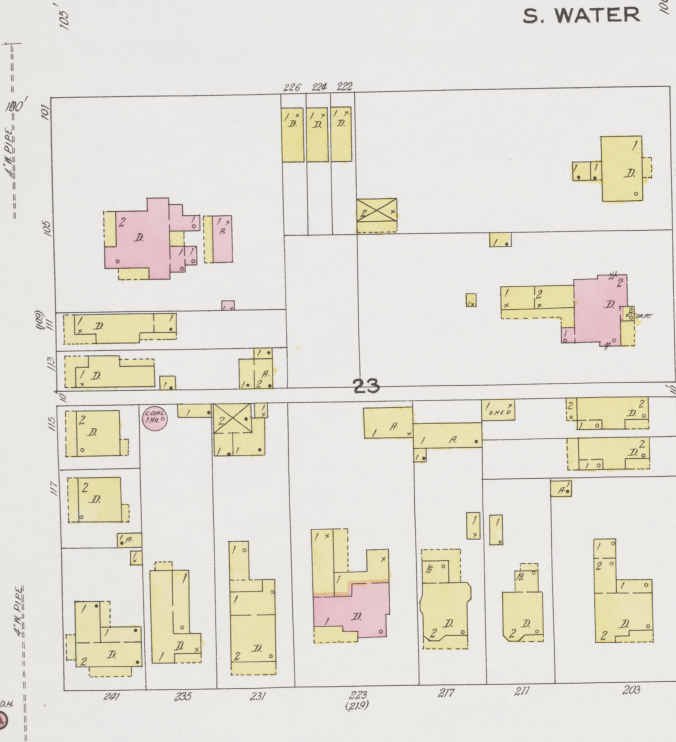
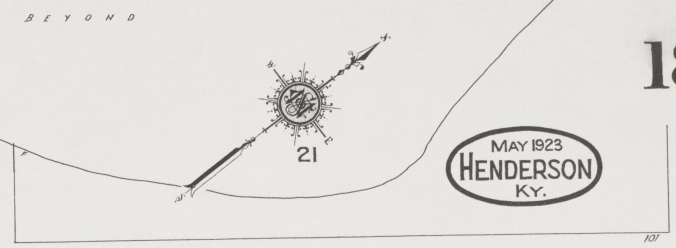
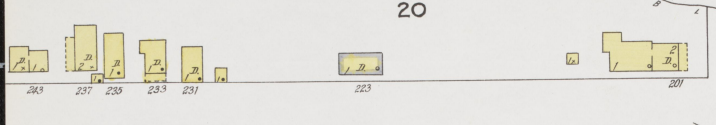
20



Copyright 1923 by the Sanders Map Co.

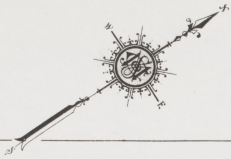
18

18



21

19

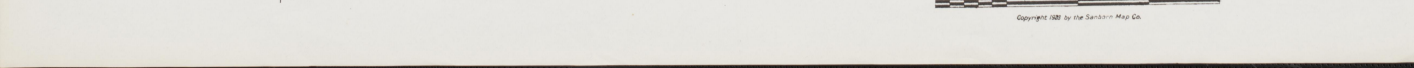
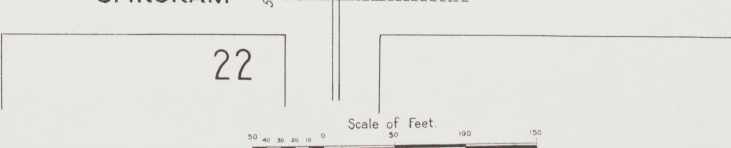
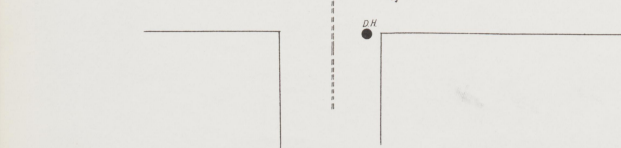
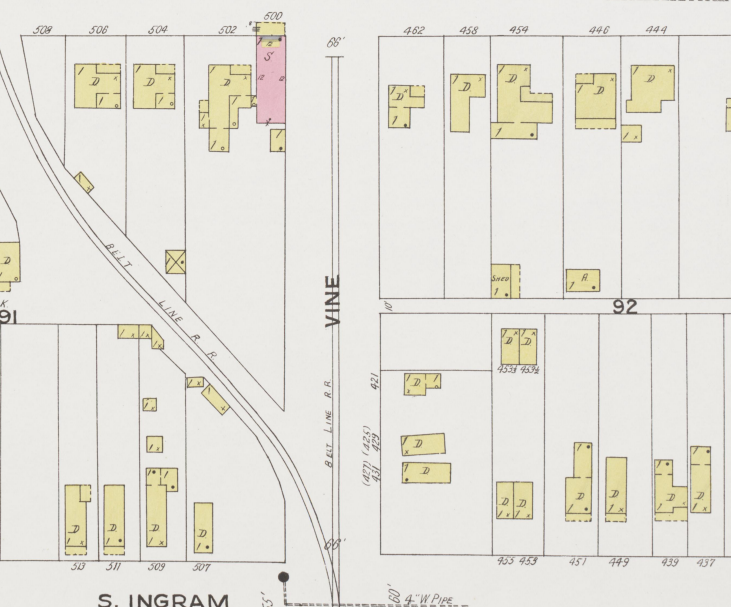
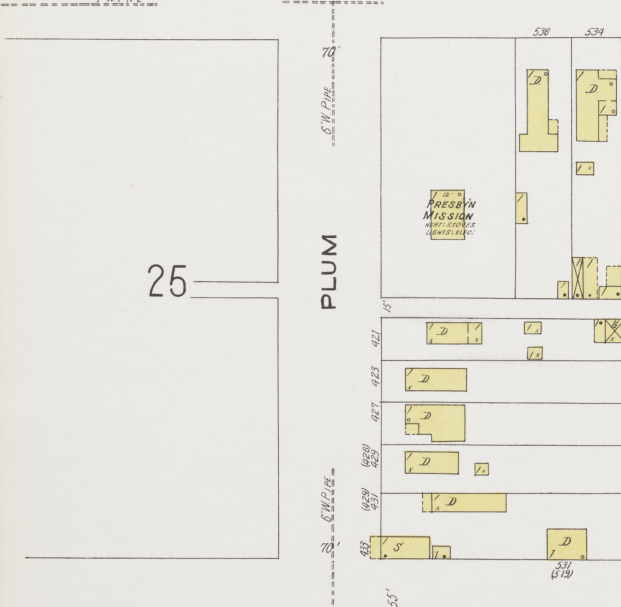
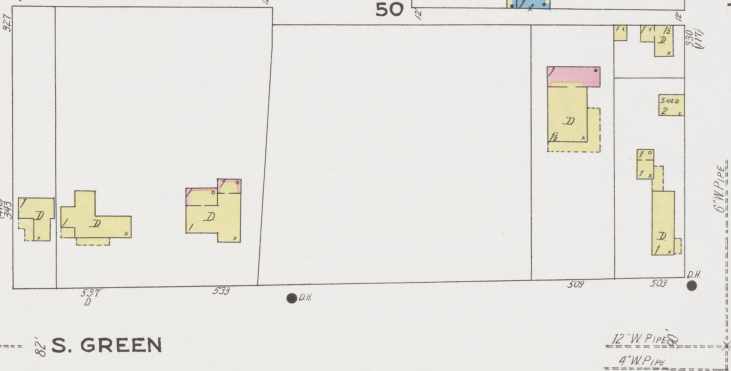
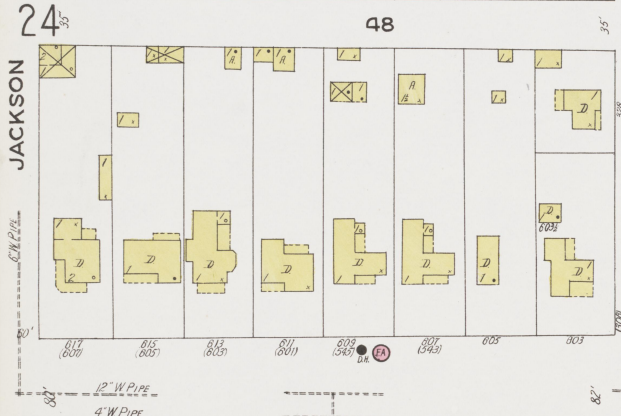
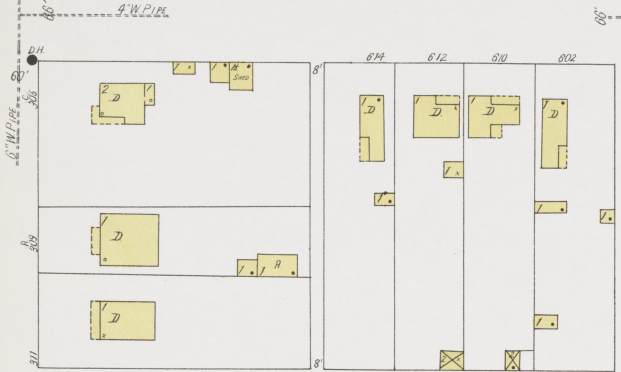


16

MAY 1923
HENDERSON
KY.

19

S. ELM



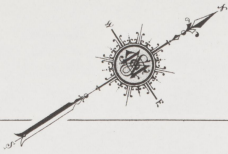
20

20

17

MAY 1923
HENDERSON
KY.

20



S. ELM



JEFFERSON

DIXON

CLAY

19

21

S. GREEN



DIXON

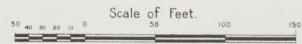
CLAY

22

23

29

S. INGRAM



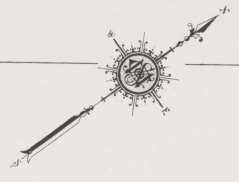
Copyright 1923 by the Sandborn Map Co.

21

18

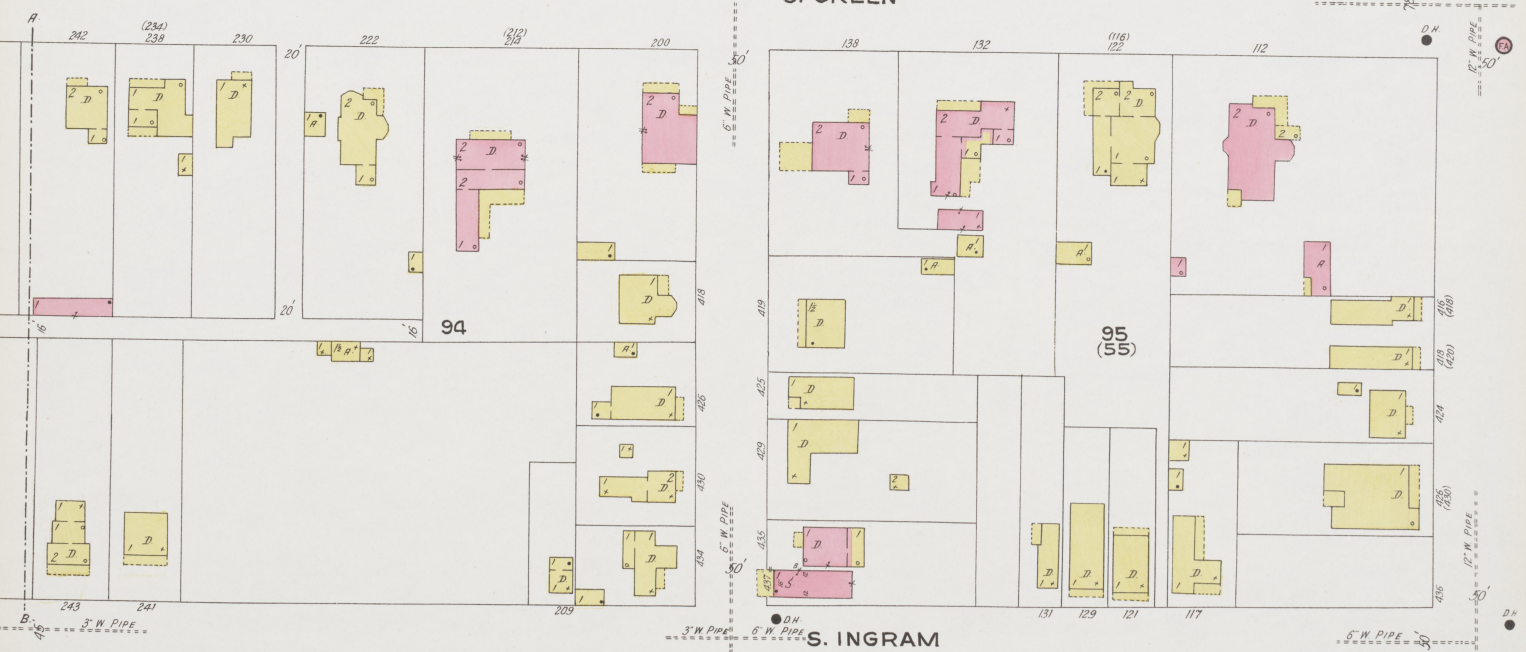
MAY 1923
HENDERSON
KY.

21

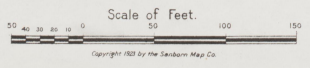


20

5



29



Copyright 1923 by the Sanborn Map Co.

22

19

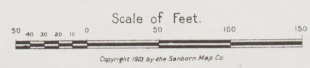
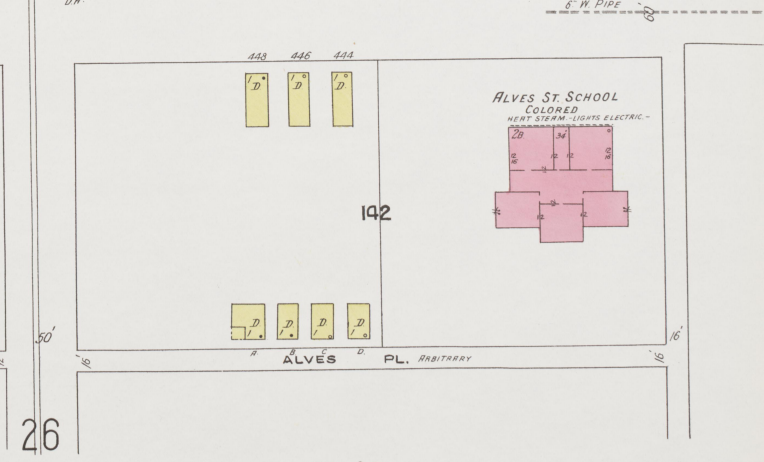
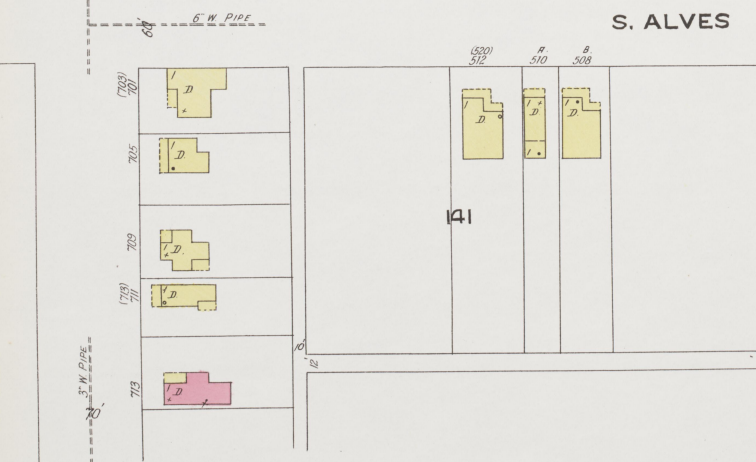
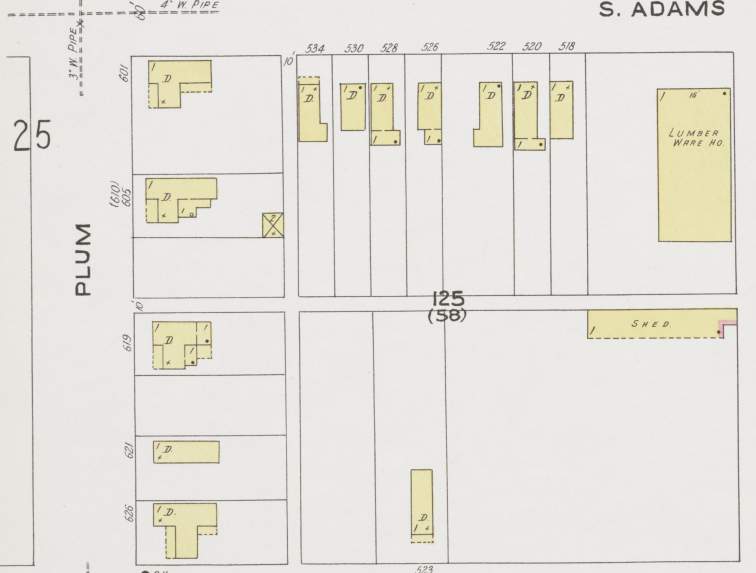
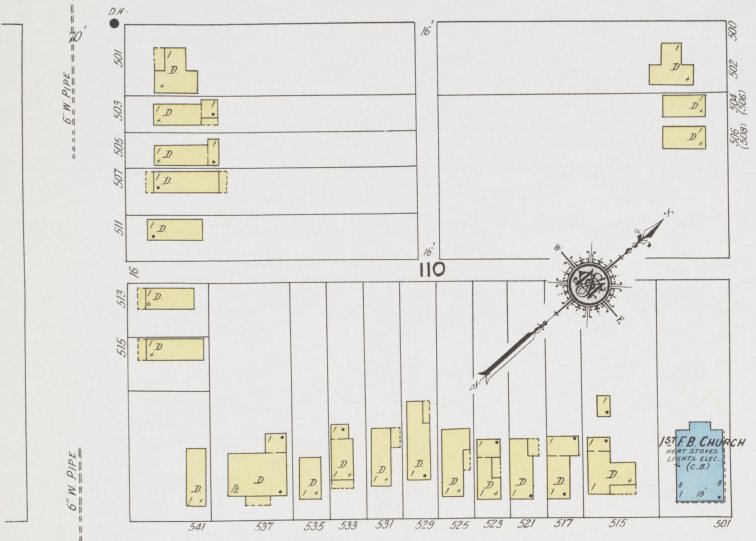
S. INGRAM

MAY 1923
HENDERSON
Ky.

20

22

1024



23

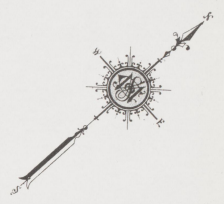
20

23

00241

S. INGRAM

MAY 1923
HENDERSON
KY.



S. ADAMS

TRY-COUNTY LOOSE LEAF
TOBACCO SALES WARE HO.

DIXON

CLAY

29

S. ALVES

ARBITRARY PL.

DIXON

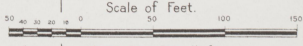
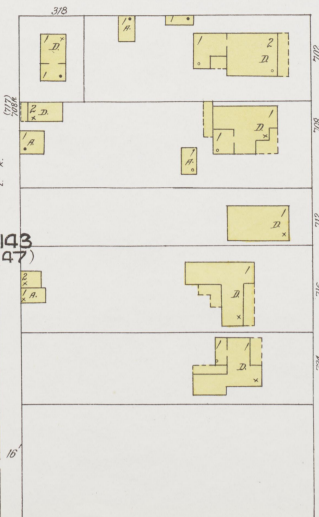
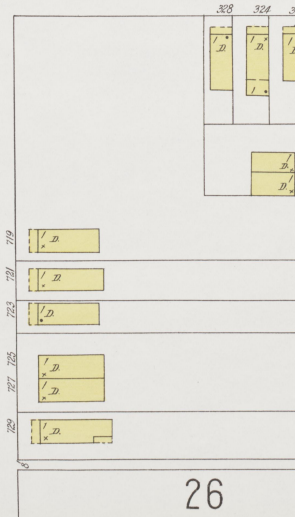
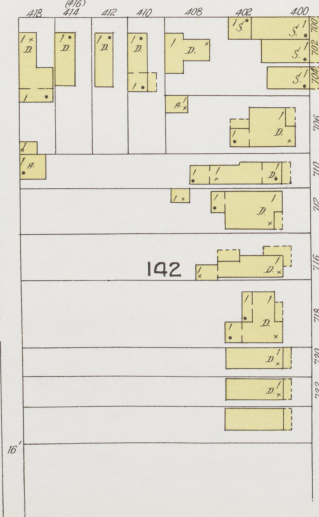
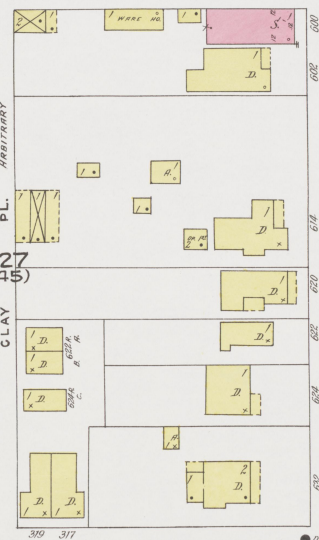
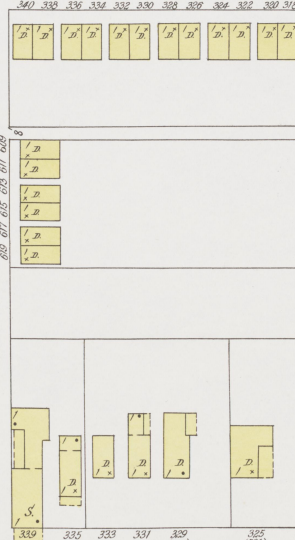
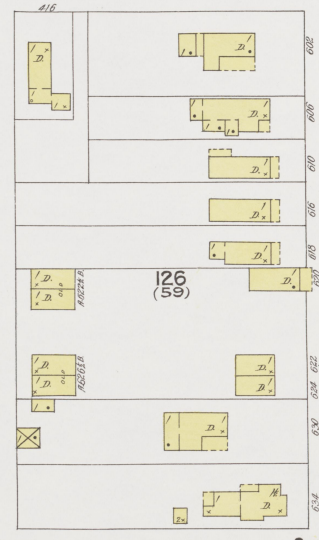
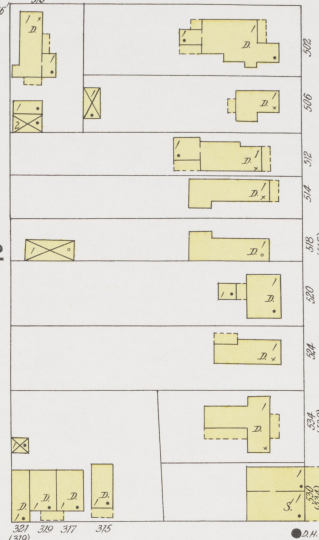
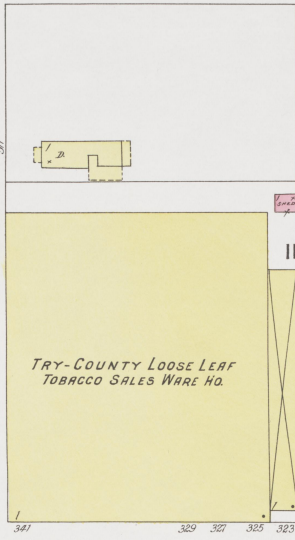
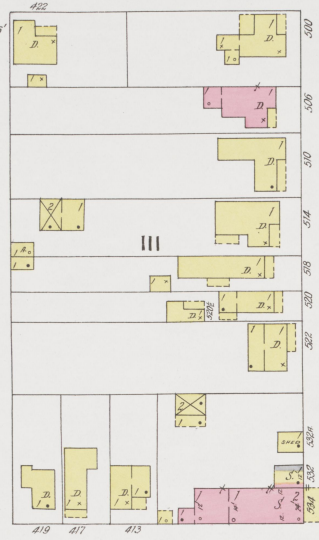
CLAY

S. ALVES ST.

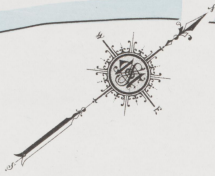
26

Scale of Feet.

Copyright 1923 by the Standard Map Co.



Ohio River ←



Scale 100 Ft to One Inch.

Copyright 1923 by the Sanborn Map Co.

SCALE 100 FT. TO AN INCH

(1024)

25

24

25

MAY 1923
HENDERSON
Ky.

19

S. GREEN

S. INGRAM

S. ADAMS

S. ALVASIA

NORRIS LANE

CHESTNUT

CHERRY

PLUM

S. ALVES

FERNWOOD CEMETERY

152

26

MADISON ST.

FARM ST.

87

88

89

90

108

109

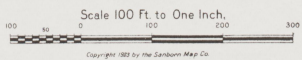
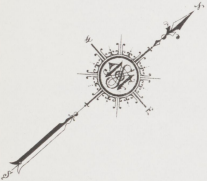
123

124

216

"ACROFT"

"GREENWOOD"



Scale 100 Ft. to One Inch.

Copyright 1923 by the Sanborn Map Co.

26

25

22

SCALE 100 FT TO AN INCH

23

26

MAY 1923
HENDERSON
KY.

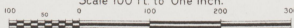
29

30

27



Scale 100 ft. to One Inch.



Copyright 1923 by the Sanborn Map Co.

28

27

328

MAY 1923
HENDERSON
KY.

SCALE 100 FT. TO AN INCH

27

195

215

217

216

221

222

BAILEY

OBYRNE

CUMMINGS

CLAY

ATKINSON

HELM

ATKINSON

213
(18)

H. J. HEINZ CO.
FOOD PRODUCTS

WATCHMAN, APPROVED CLOCK -
POWER AND REST-TERM -
LIGHTS ELECTRIC -
AUTO SPRINKLER SYSTEM W/IN SUMMER - DRY IN WINTER -
WATER SUPPLY FROM CITY MAIN - 50000 GAL. CAPACITY -
TANK ELEV. 50' - UNDERWATERS STEAM FORCE PUMP -
CRACK 1000 GAL. PER MIN. - C. DEM. EXHIBIT -
HYDS. AND HOSES SHOWN -

STOCK ROOM

BOTTLING

STOCK R.M.

BOTTLING

236
(13)

THE MARSHALL FURNITURE CO.

WATCHMAN APPROVED CLOCK -
POWER AND REST-TERM -
LIGHTS ELECTRIC -
AUTO SPRINKLER SYSTEM -
WATER SUPPLY FROM CITY MAIN -
ELEV. 50' - UNDERWATERS STEAM FORCE PUMP -
ELEV. 75' - C. DEM. EXHIBIT -
SLUICER TO ALL WOOD WORKERS -

BURDETTE

32

206

SHELBY

209

205

205

205

205

205

205

205

205

205

205

205

205

205

205

205

205

205

205

205

YOUNG

BEYOND

VACANT

SOUTHLAND COAL CO. MINE NPS
FORMERLY KEYSSTONE MINING & MFG CO.



COAL CT. SHIPPERS

WERVERTON LUMBER CO.

LUMBER MILL

NO WATCHMAN
POWER & LIGHTS ELEC
HEAT STOVES -

MADISONVILLE RD.

212

212

212

212

212

212

212

212

212

212

212

212

212

212

212

212

212

212

SOUTHLAND COAL CO. MINE NPS
FORMERLY PEOPLES
MINING CO.

NO WATCHMAN -
PUMPS & HEAT STEAM
LIGHTS ELECTRIC.

Scale 100 Ft. to One Inch.

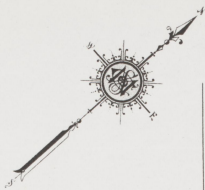
Copyright 1923 by the Standard Map Co.

29

29

SCALE 100 FT. TO AN INCH

MAY 1923
HENDERSON
Ky.



20

21

5

N. INGRAM ST.

S. INGRAM

113
114 (56)
BARRETT MANUAL TRAINING SCHOOL
HEAT STEAM LIGHTS ELECTRIC

115 (52)
JUNIOR HIGH SCHOOL
HEAT STEAM LIGHTS ELECTRIC

S. ADAMS

N. ADAMS ST.

128 (48)
129 (57)

THE MOSELEY HOSPITAL
HEAT STEAM LIGHTS ELECTRIC

130 (53)

S. ALVES

N. ALVES ST.

144 (46)
145

218 PRESBYT. CHURCH
HEAT STEAM LIGHTS ELECTRIC

146

S. ALVASIA

N. ALVASIA ST.

156

157

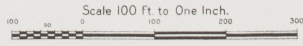
158

S. HOLLOWAY

N. HOLLOWAY ST.

30

33



Scale 100 ft. to One Inch.

Copyright 1923 by the Searborn Map Co.

23

26

CLAY

POWELL

WASHINGTON

CENTER

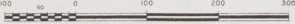
FAGAN ST.

30
MAY 1923
HENDERSON
KY.

SCALE 100 FT. TO AN INCH



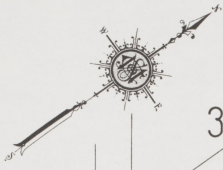
Scale 100 Ft. to One Inch.



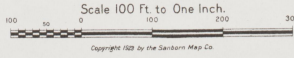
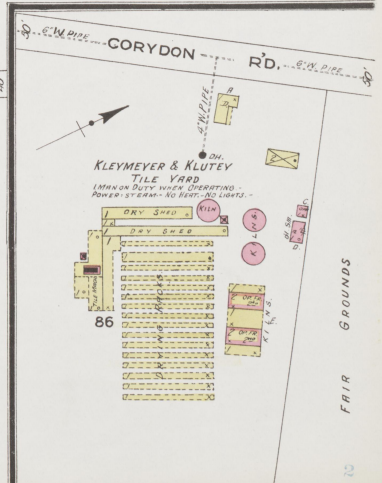
Copyright 1923 by the Sanborn Map Co.



MAY 1923
HENDERSON
KY.



PEERLESS DISTILLING CORP
FORMERLY THE KY PEERLESS DISTILLING CO.
H. KRAVER, PRES.
REGISTERED DISTILLERY NO. 50, 2ND DISTRICT
HENDERSON, KY.
NOT IN OPERATION.
WARE HOUSING & BOTTLING ONLY.
HEAT STOVE IN OFFICE - POWER &
LIGHTS - ALL FINE. WATCHMAN: BROWDER
CLUCKY. 3 BELL GUARDS: WISE & WISE
AS SHOWN.



Scale 100 Ft to One Inch.
Copyright 1923 by the Sanborn Map Co.

33
29

N. ALVASKIA 15

SCALE 100 FT TO AN INCH

33

S. HOLLOWAY ST.

N. HOLLOWAY

MAY 1923
HENDERSON
KY.

173

174

175

178
(33)

179

CENTER

N. JULIA

CARLISLE

34

30

N. MEADOW

CLARK

189
(3A)

190

191

WINSTEAD

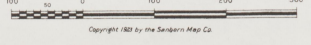
GREEN HO.
P.C.R. FREIGHT HO.

HENDERSON ELEVATOR CO.
ELEVATOR BUILT - 1902.
WATCHMAN, APPROVED CLOCK-
POWER & KEYS, INTERNAL FUEL, COME
LIGHTS ELEC., 3-8" DIA. 100' DIA. HOSE
IN OFF. 100' HOSE IN WARE HO. H.

179

227

Scale 100 Ft to One Inch.

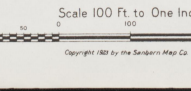
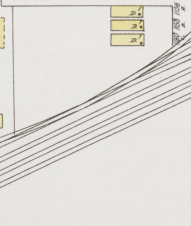
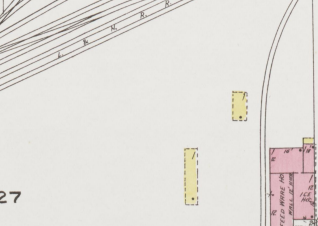
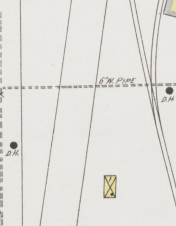
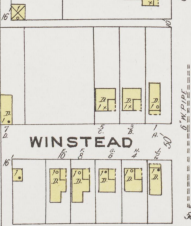
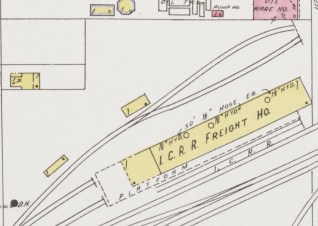
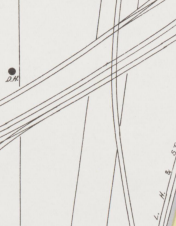
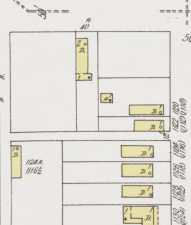
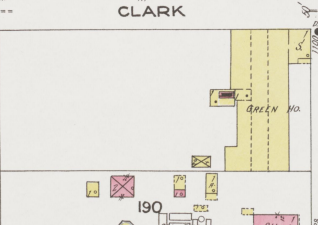
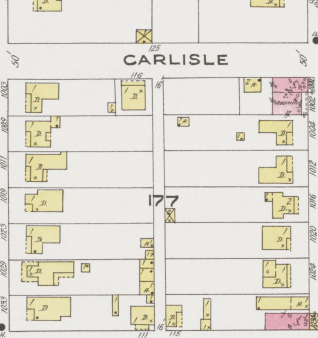
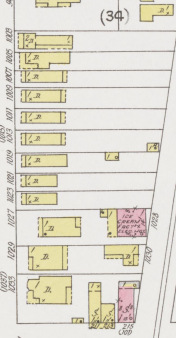
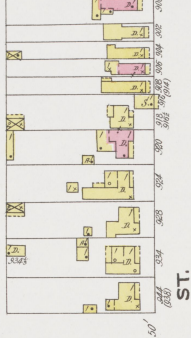
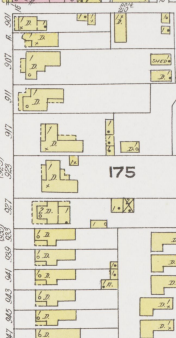
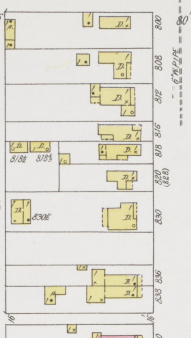
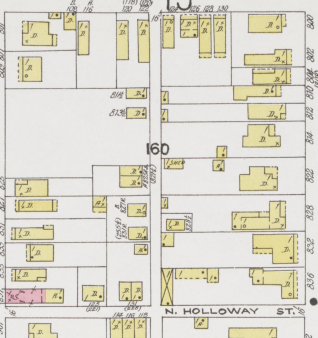
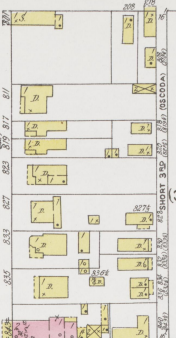
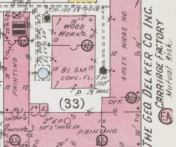
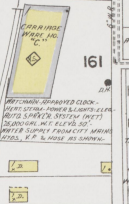
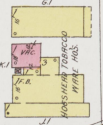
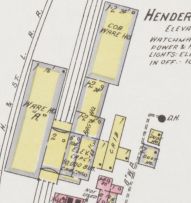
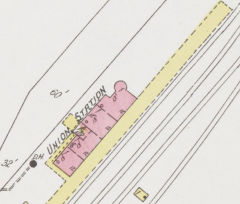


Copyright 1923 by the Sanborn Map Co.

36
MR. KINLEY
(KRAVER)

KENTUCKY CARBON CHEMICAL CO.

40' x 100' OVERSIZ.



34

34

MAY 1923
HENDERSON
KY



SCALE 100 FT TO AN INCH



Scale 100 Ft to One Inch.

Copyright 1923 by the Sanborn Map Co.

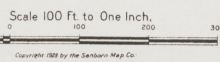
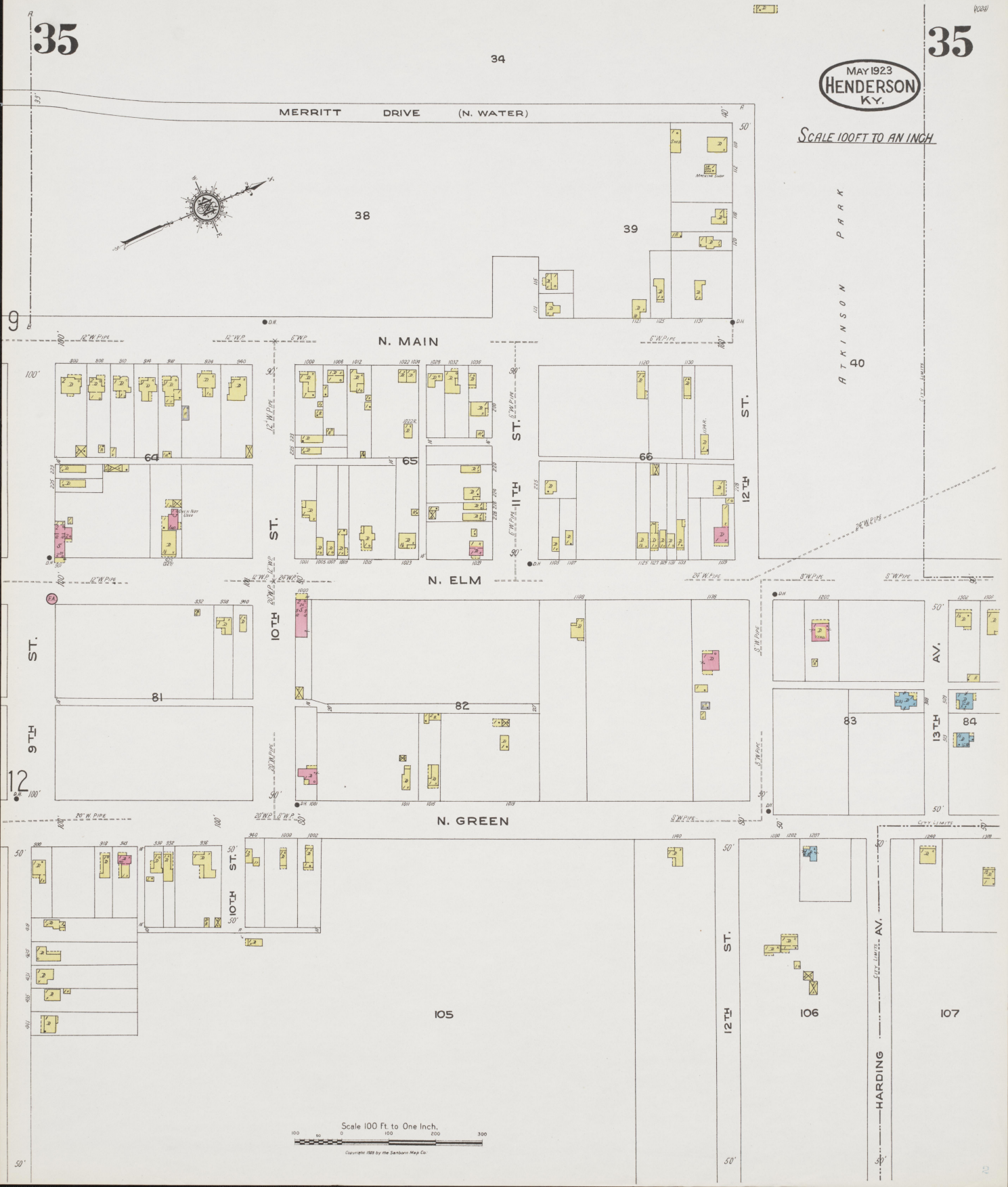


Five Pools Cyan Ink
Sully Ink
Print Done Constan Tams Out
1922 INK
W.P.P. BEYOND

MAY 1923
HENDERSON
KY.

SCALE 100 FT TO AN INCH

ATKINSON
PARK



Scale 100 Ft to One Inch,
Copyright 1923 by the Sanborn Map Co.

HENDERSON WATER WORKS

OPERATES CONTINUOUSLY.
HEAT-STEAM-POWER-STEAM & ELEC-FUEL-COAL;
2-WORTHINGTON ELEC. P.S. CAPCY. 3-MILLION GALS.
ELEC. 1-CHALMERS ELEC. P. CAPCY. 2-MILLION GALS.
FOR FIRE SERVICE-2-FALLS-CHALMERS STEAM P.F.
CAPCY. 2-MILLION GALS. & FILLIS STEAM P.F. CAPCY.
3-MILLION GALS. (RESERVE PUMPS)

MAY 1923
HENDERSON
KY.

Located 2 Miles S of Court Ho.

ECKERT PACKING CO

WATCHMAN-APPROVED CLOCK-HEAT-STEAM-LIGHTS & POWER-ELEC-FUEL-COAL-ANDS & ROSE-RO-SHOWAN-WATER SUPPLY FROM CITY CHEM EXTERS.

S. GREEN

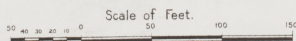
JL NICHOLSON & SONS
ICE PLANT & COAL MINE

2-MEN ON DUTY AT NIGHT-POWER & HEAT-STEAM- LIGHTS-ELECTRIC

MCKINLEY (KRAVER)

KLEMEYER & KLUTEY
BRICK YARD

2-MEN ON DUTY AT NIGHT WHEN OPERATING.
POWER & HEAT-STEAM-FUEL-COAL-LIGHTS-ELEC.



Copyright 1922 by the Seaborn Map Co.