

WATER FACILITIES: Direct pumping system. Supply from springs flows into two catch basins at pump house, also 7 million gallon reservoir near camp house is used as auxiliary supply water pumped direct through mains by two compound duplex Deane pumps, capacity 100,000 gals each per day. Six miles of 8-1/2" water pipe. 42 double hydrants. Average domestic pressure 75 lbs per sq. inch. Average fire pressure 105 lbs per sq. inch. Fire Dept. No organized company. Two 2" wheel hose carts. One H. & L. Truck. 400 ft. hose. Alarm public bell. Public lights - electric.

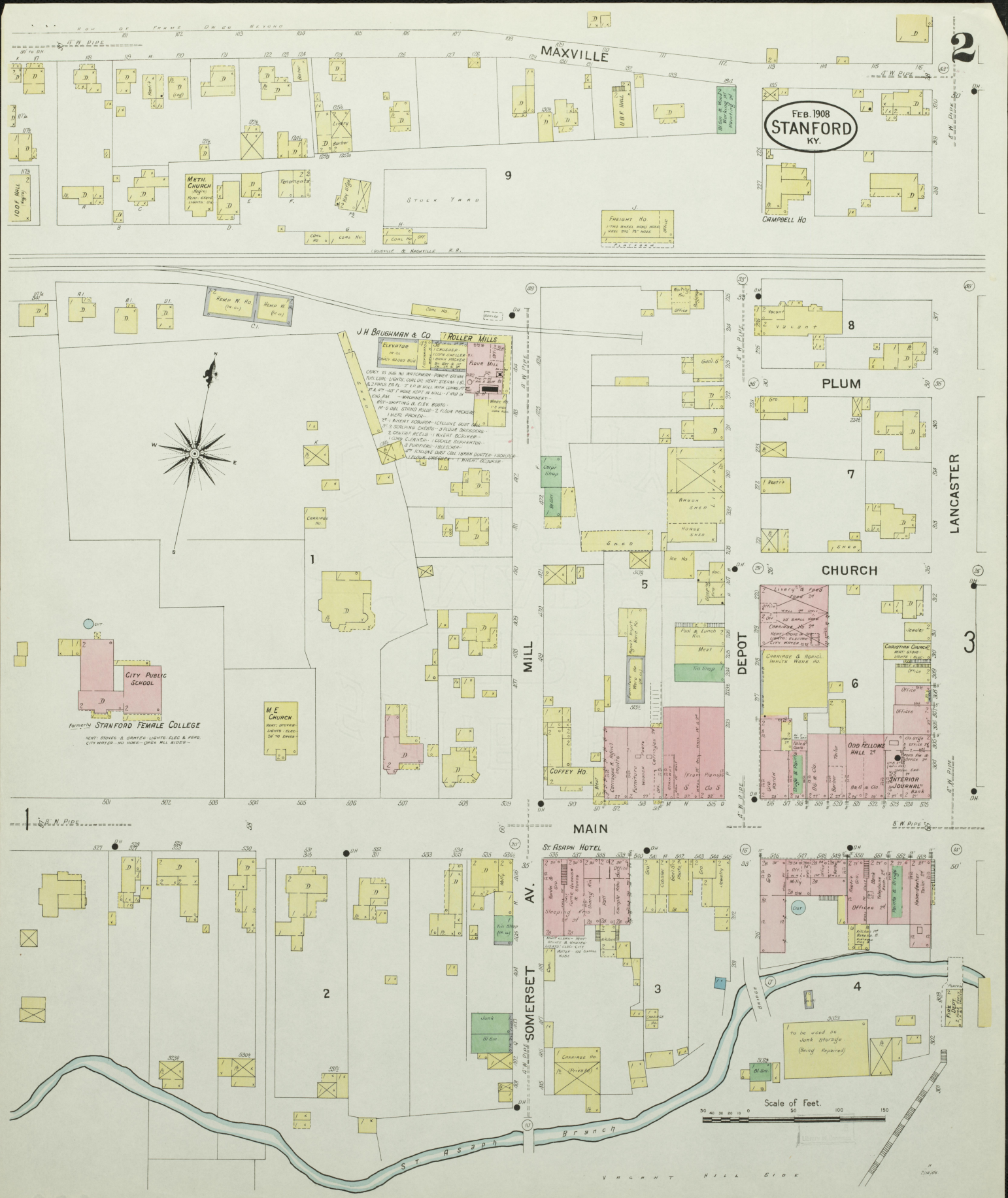
INDEX

STREETS		INDEX	
Chapel Gap Pike	5	Main	300-229 1
Church	2, 3	"	200-409 3
County Road	2, 3	"	600-708 4
Cut Off Pike	2, 3	Maxville	501-553A 2
		" near Danville	101-135A 2
Danville	100-117 1	Mill	1
Daugherty Ave.	1	Moon	2
Depot	2	Plum	2
First	3	Second Ave.	2
Goshen Pike	5	Somerset	2
Hustonsville Pike	1	Third	2
Lancaster	304-320A 2	Watts	200-211 4
Logan Ave.	404-410A 3	Whitley Ave.	200-211 4
	400-305 4		

SPECIALS		INDEX	
Allen, J. A., Lumber Yard	4	Baptist Church (Negro)	2
		Baptist Church	2
		Brighton, J. H. & Co., Roller Mills	2
		Bright & Paxton, Warehouse	2
		Campbell House	2
		Christen Churches	2
		City Public School	2
		Coffey House	2
		County Court House & Jail	2
		Farmers Roller Mills	2
		Fire Department	2
		I. O. O. F. Hall (Negro)	2
		Interior Journal Printing	2
		Kessler, Julius, Distillery, Forme	5
		Methodist Church, Negro	2
		Epist Church	2
		O'Bannon & Warner Steam Laundry	3
		Powell, J. R., Saw & Planing Mill	2
		Presbyterian Church	2
		St. Asaph Hotel	2
		Spears, F. F. & Son's Warehouse	4
		Stanford Creamery Co., Inc.	2
		Female College, Formerly 2	
		Public School	2
		Water, Light & Ice Co.	2
		Traylor, W. H., Distillery	5
		W. B. F. Hall	2
		Walker, W. P., Distillery	5
		Walton's Opera House	2

NOTE—House numbers given are arbitrary.





FEB. 1908
STANFORD
KY.

MAXVILLE

PLUM

CHURCH

MILL

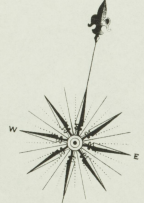
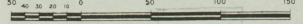
MAIN

AV.

SOMERSET

LANCASTER

Scale of Feet.



Formerly STANFORD FEMALE COLLEGE

ST ASAPH HOTEL

ST ASAPH BRANCH

VIRGINIA HILL SIDE

FEB. 1908
STANFORD
KY.

J. R. POWELL
Saw and Planing Mill.
FUEL: COAL AND WASTE.
HEAT: STEAM AND STOVE.
POWER: STEAM. NO LIGHTS.
8 1/2" HOSE.



SCATTERED PILES OF LUMBER

L. & N. R. R.



53

CHapel GAP PIKE

COUNTY ROAD

51

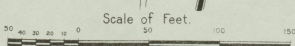
CRABORCHARD



W. P. WALKER
Farmer
JULIUS KESSLER
Registered Distillery No. 81.
8th District, Lincoln Co. Ky.

OPERATED ABOUT 5 MONTHS OF YEAR.
MASH: CORN. 64 BUSH. AVERAGE YIELD 42 GALS.
PER BUSH. PRODUCT: BOURBON AND FINE WHISKEY.
HEAT: STOVE IN OFFICE. POWER: STEAM. FUEL:
COAL. LIGHTS: OIL. LIGHTING: WATCHMAN IN
OPERATING SEASON. SMALL F. PUMP. 30" HOSE.
50" 78" HOSE. NO DOUBLER.

Located 1 1/2 Miles S. E. of Stanford
and 1/4 Mile S. of Craborchard.



Located 3 1/2 Miles N. E. of Stanford Ky.

W. H. TRAYLOR
Registered Distillery No. 76.
8th District Lincoln Co. Ky.

OPERATED ABOUT 5 MONTHS OF YEAR.
MASH: CORN. 100 BUSH. PER DAY.
AVERAGE YIELD 27 GALS. PER BUSH.
PRODUCT: SOLE WHISKY - BOURBON AND
RYE WHISKEY. NO WATCHMAN. POWER:
STEAM. FUEL: COAL. LIGHTS: OIL. LIGHTS:
HEAT: INDIRECT. STEAM IN WARE HO.
W. 3" AND 4" STOVE IN OFFICE. 100" F.
HOSE. SMALL F. PUMP. STEAM DOUBLER.

BONDED WARE No. 3
CAPACITY 5000 BLS.
PATENT RACKS. 12 TIERS.

BONDED WARE No. 3
CAPACITY 5000 BLS.
PATENT RACKS. 12 TIERS.

GOSHEN PIKE

BRANCH



Located 3 1/2 Miles N. E. of Court Ho.

Map Division
U. S. GEOLOGICAL SURVEY