



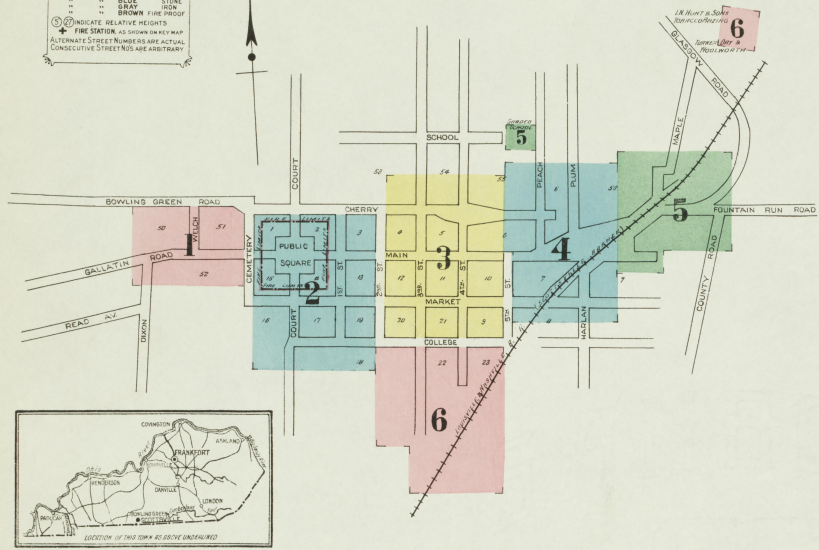
Q.F. 35550

Grades nearly level. Principal streets macadamized.
Public lights none.

JUN 14 1913

KEY

- STEEL OR IRON ROOF
- METAL CORNICE
- FIRE WALL ON NEW ROOF
- FRONT PORCH
- FRONT PORCH
- OPENING WITH IRON DOOR
- FRAME PARTITION
- WINDO'S IRON SHUTTERS
- WINDO'S 1ST STORY
- WINDO'S 2ND & 3RD STORES
- 2 1/2 & 4 1/2
- STABLE
- BUILDINGS COLORED YELLOW ARE FRAME
- BLUE BRICK
- GREEN STONE
- IRON
- BROWN FIRE PROOF
- INDICATE RELATIVE HEIGHTS
- FIRE STATION AS SHOWN ON RECORD MAP
- ALTERNATE STREET NUMBERS ARE ACTUAL
- CONSECUTIVE STREETS ARE ARBITRARY

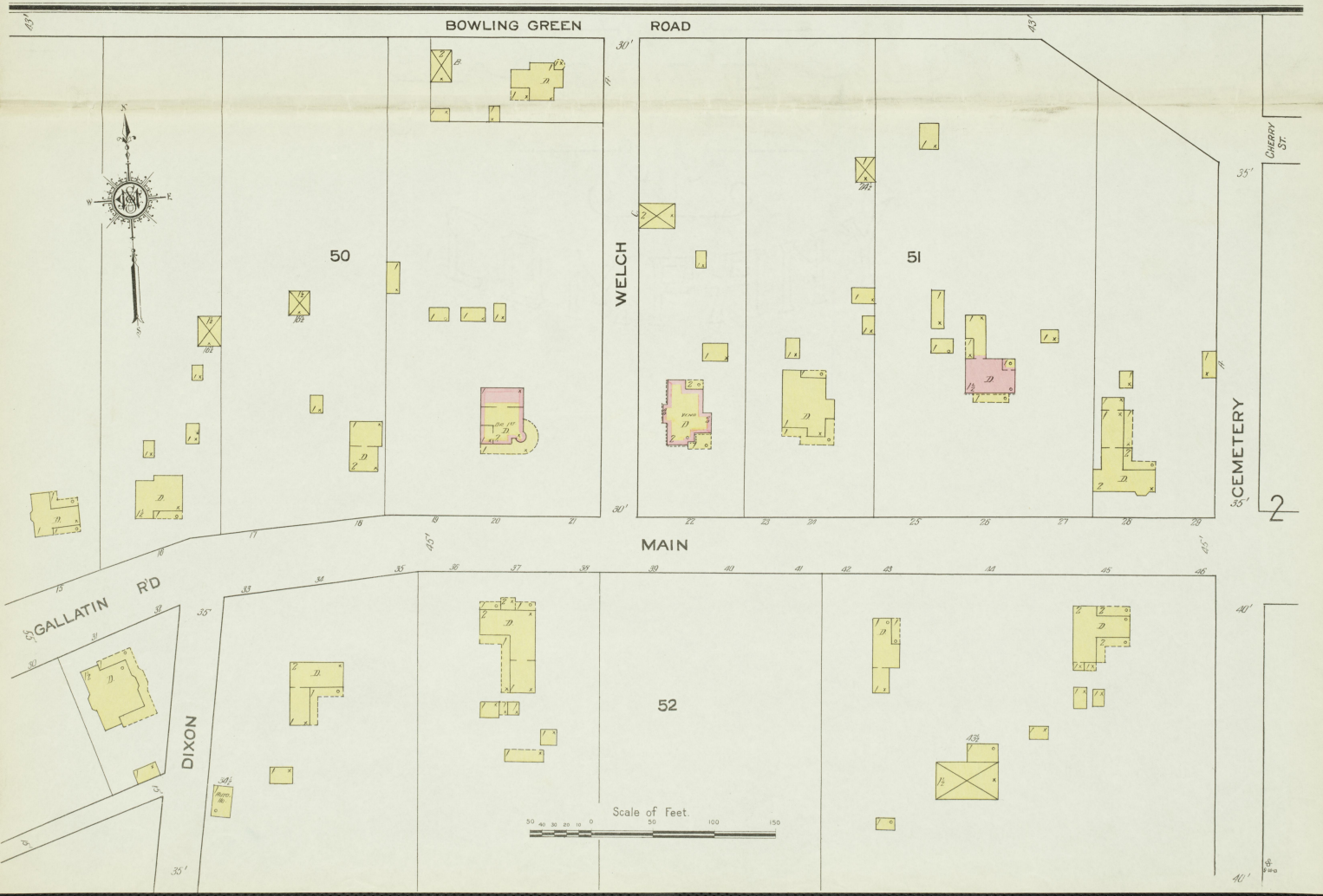


INDEX

STREETS	SHEET	SHEET	SHEET
Bowling Green Road	1	Main, 301-325	4
Cherry	1 & 2	Maple, 226-245	6
County Road	1	Market, 15-29	2
Dixon	1	Public Square, 101-126	2
Fifth	401-406	Second, 301-314	4 & 5
First	502-506	Third, 401-405	6
Fountain Run Road	2	Welch, 414-418	6
Fourth	501-504	Welch, 419-438	3
Gallatin Road	1		
Glasgow Road	2		
Harlan	4		
Main	15-40		
	101-126		

SPECIALS	SHEET
Allen County Fair Grounds	5
J. W. Spoke Factory	6
Daniels Church	3
Belle Hotel	3
Braswell Tire and Log Co.	2
Christian Church	4
County Court House and Jail	4
Free Methodist Church	4
Hendrick, H. L. Tobacco Printing	4
Hunt, I. N., & Sons, Tobacco Printing	4
L. & N. R. R. Depot	5
Love, Boyd & Co., Saw Mill (formerly)	5
Masonic Hall	2
Methodist Church	3
Episcopal Church (North)	3
Post Office	2
Read, J. D., & Co., Flaming Mill	5
Saw Mill	5
Scottsville Electric Light Plant	5
Grand School	5
Hotel	5
Milling Co.	5
Woolen Mills	5
Standard Oil Co.	4
Telephone Exchange	3
Turner, Day & Woolworth, Handle Factory	6

NOTE.—House Numbers given are arbitrary.



MAY 1913.
SCOTTVILLE
KY.

CHERRY (RYE)

COURT

PUBLIC

ALLEN Co COURT Ho.
SQUARE

MAIN

MAIN

1ST ST.

2ND ST.

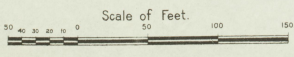
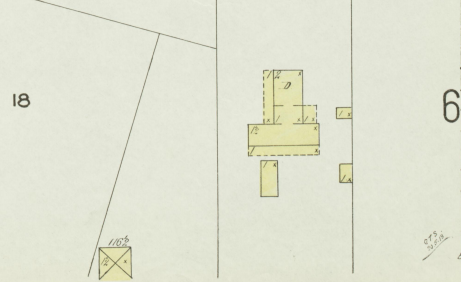
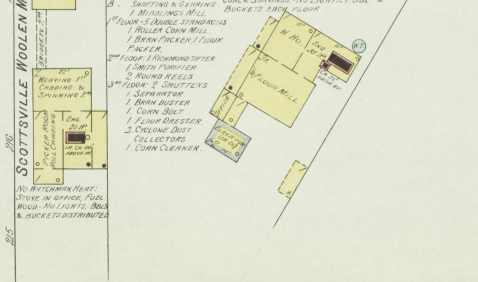
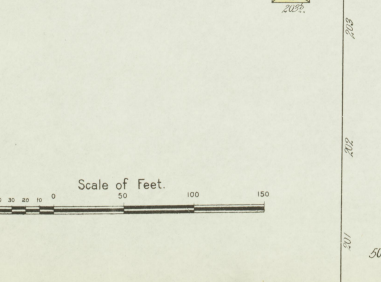
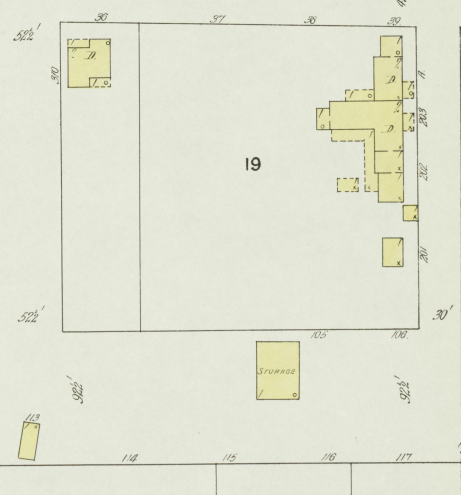
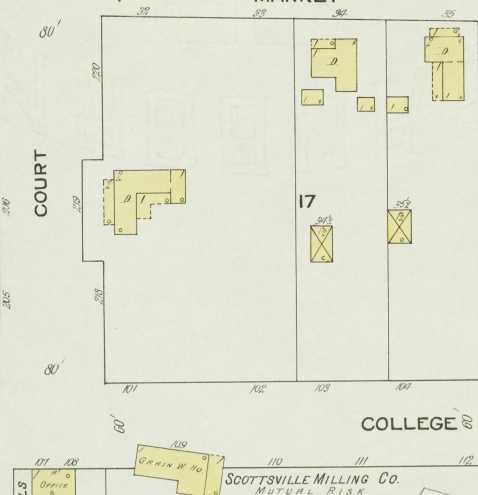
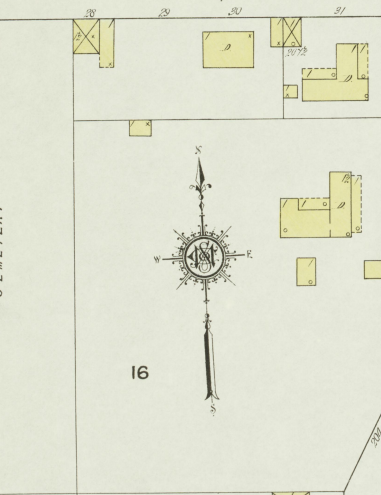
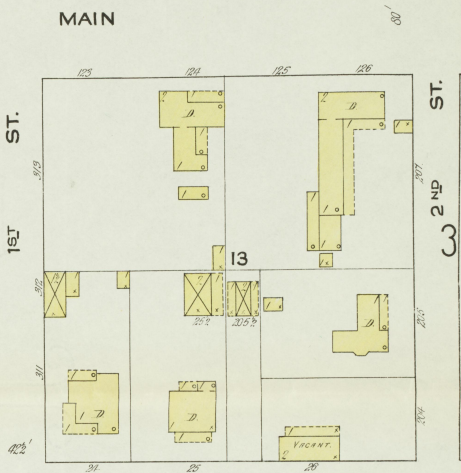
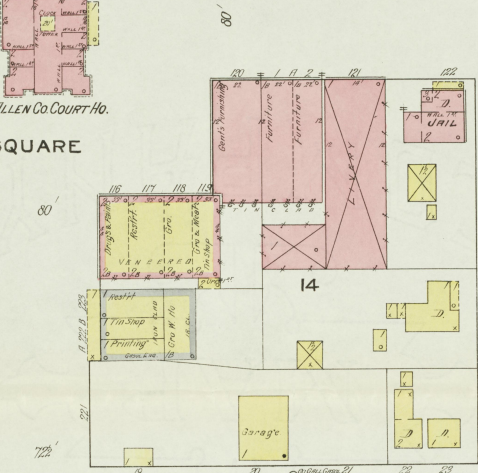
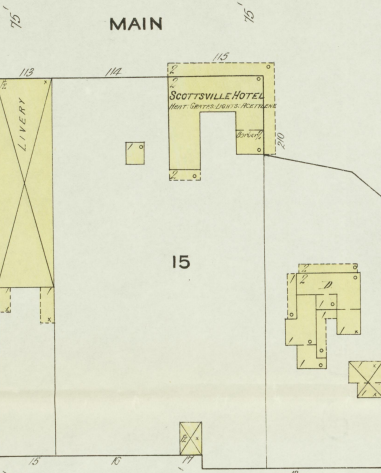
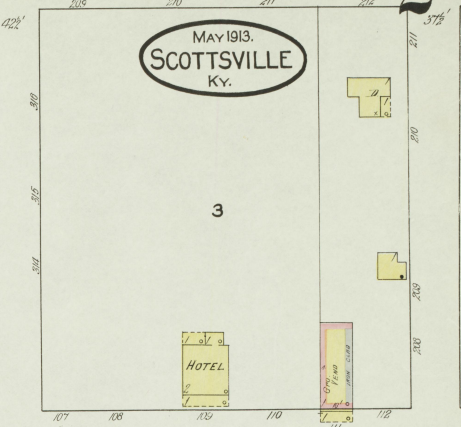
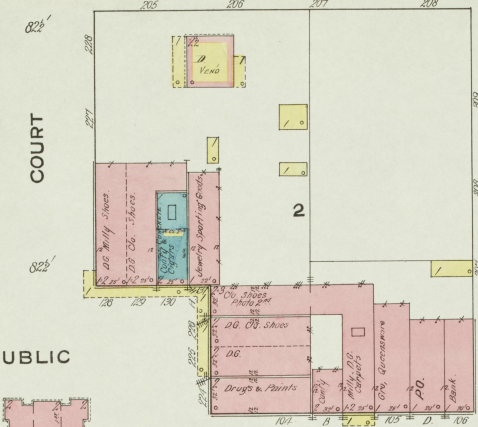
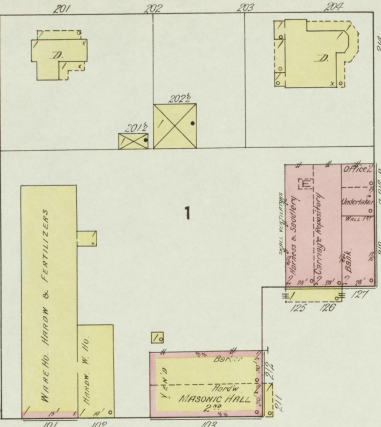
MARKET

COURT

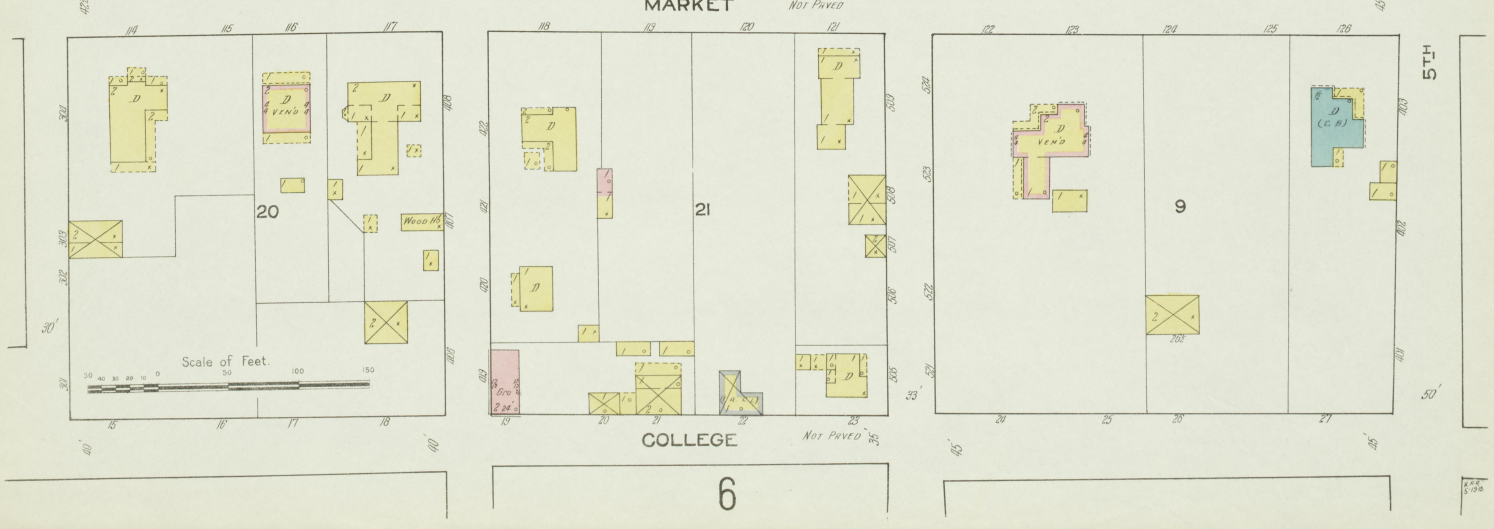
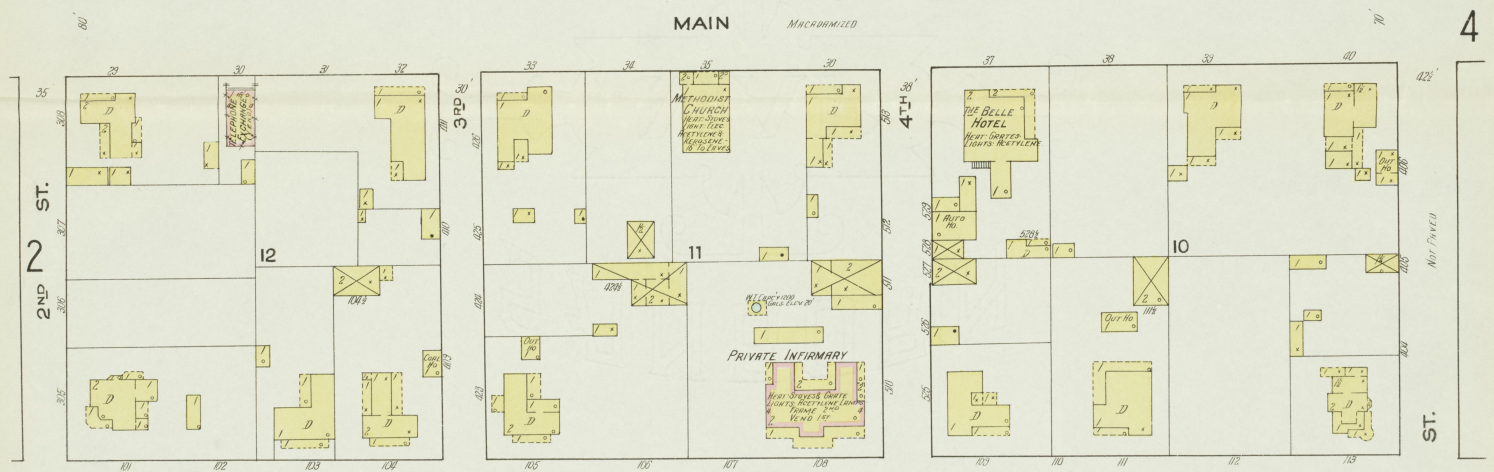
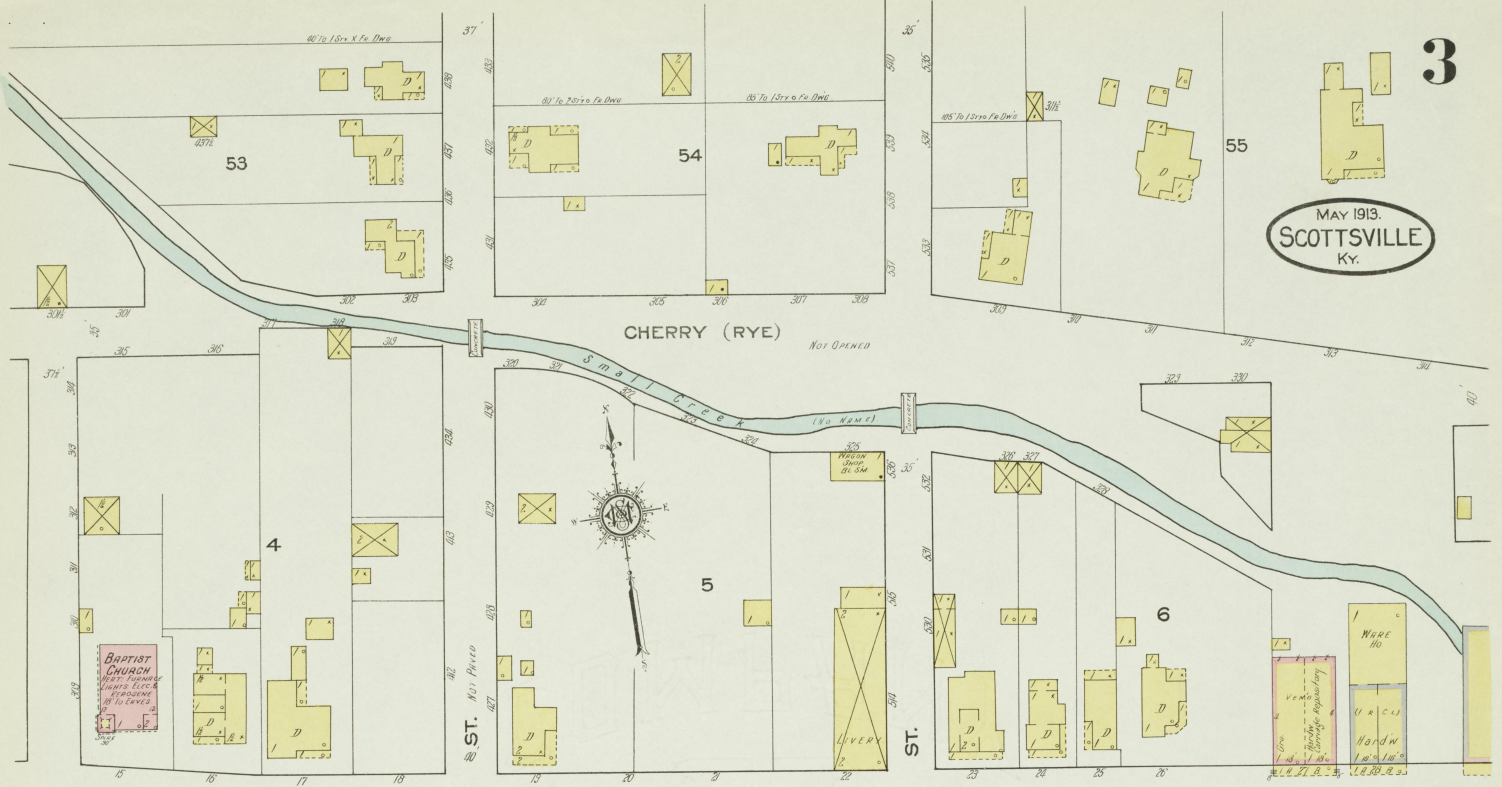
COLLEGE

SCOTTVILLE MILLING CO.
MOTOR 1913 K

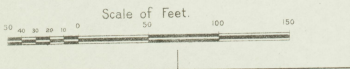
- SCOTTVILLE WOOLLEN MILLS
- 1. SHEETING & CLEANING
 - 2. MILLING MILL
 - 3. FOUR-DRUMS SPINNING
 - 4. ROLLER COIN MILL
 - 5. BLENDED SPINNING
 - 6. PACKER
 - 7. 2ND FLOOR FINISHING OFFER
 - 8. LIGHT PURIFIER
 - 9. ROUND REELS
 - 10. 3RD FLOOR 2 SHUTTLES
 - 11. SEPARATOR
 - 12. BLENDED
 - 13. COIN DIE
 - 14. FLOUR PRESSER
 - 15. CYCLONE DUST COLLECTOR
 - 16. COIN CLEANER

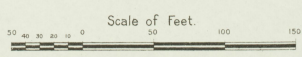
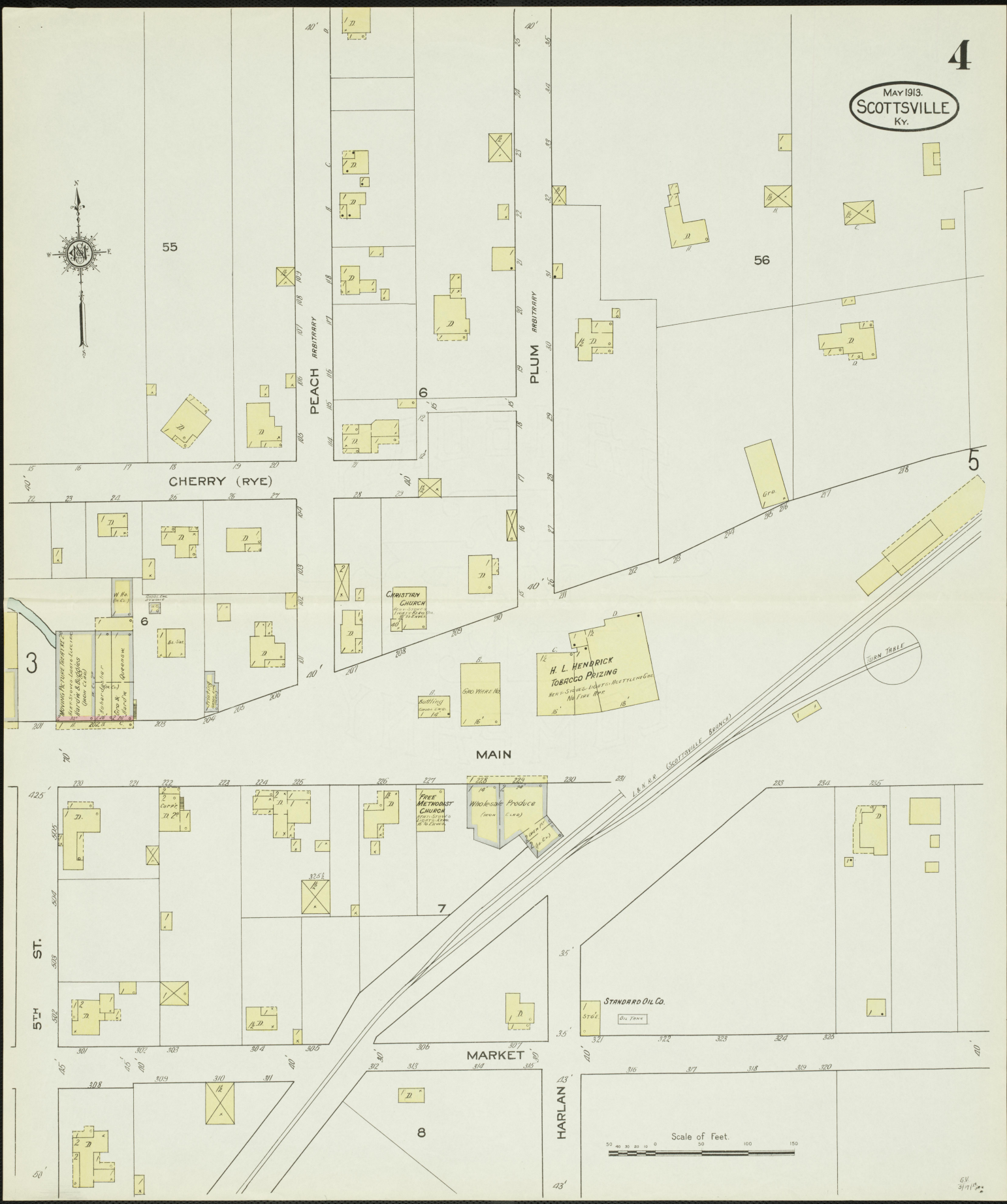
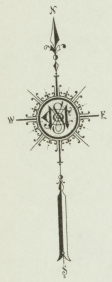


MAY 1913.
SCOTTVILLE
Ky.

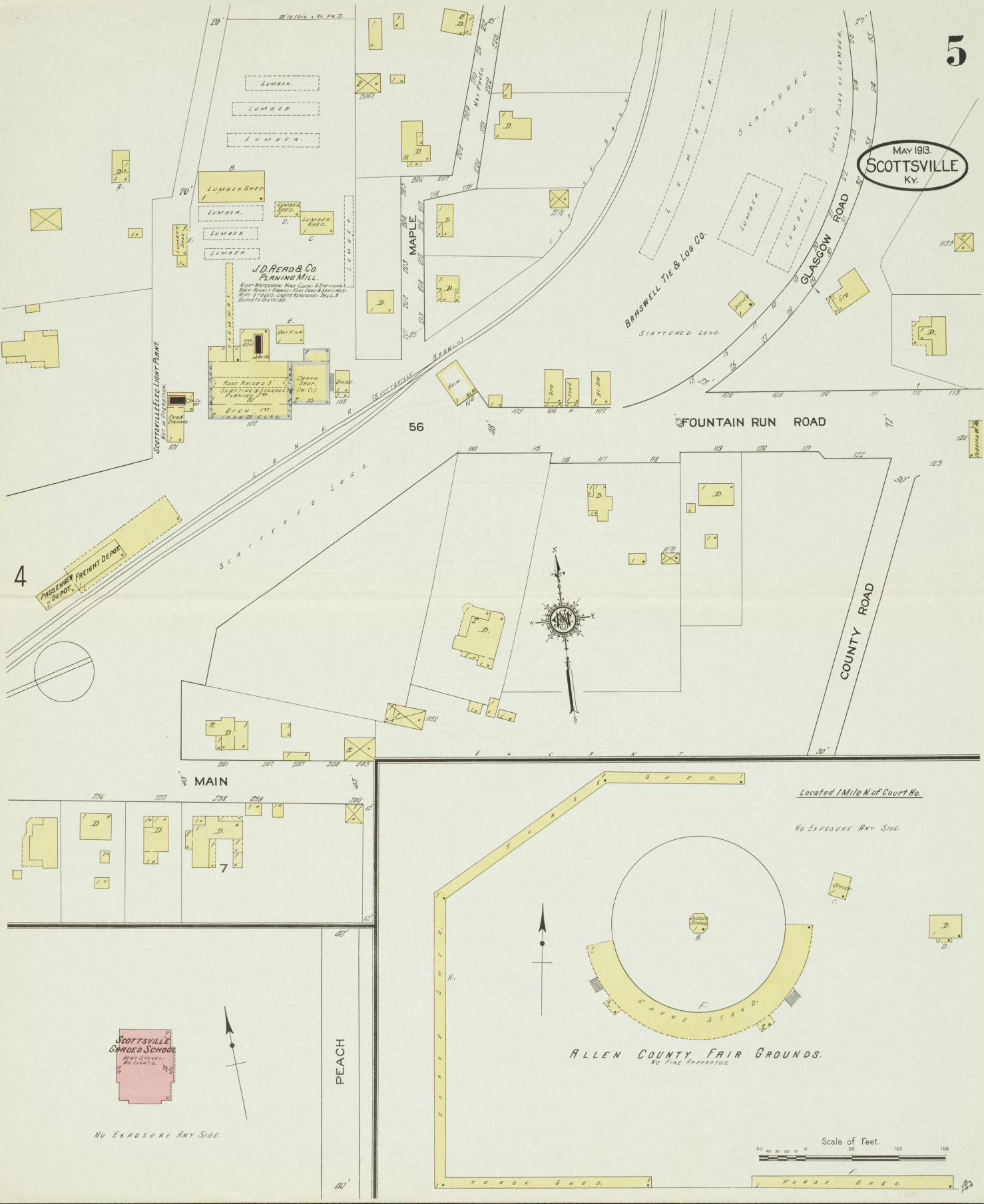


Scale of Feet





MAY 1913.
SCOTTSVILLE
Ky.



J.D. READ & Co.
SAWMILL
 HIGH WATER MARK LOC. 6 SCOTTSVILLE
 100' HIGH WATER MARK LOC. 7 SCOTTSVILLE
 HIGH WATER MARK LOC. 8 SCOTTSVILLE
 HIGH WATER MARK LOC. 9 SCOTTSVILLE
 HIGH WATER MARK LOC. 10 SCOTTSVILLE
 HIGH WATER MARK LOC. 11 SCOTTSVILLE
 HIGH WATER MARK LOC. 12 SCOTTSVILLE
 HIGH WATER MARK LOC. 13 SCOTTSVILLE
 HIGH WATER MARK LOC. 14 SCOTTSVILLE
 HIGH WATER MARK LOC. 15 SCOTTSVILLE
 HIGH WATER MARK LOC. 16 SCOTTSVILLE
 HIGH WATER MARK LOC. 17 SCOTTSVILLE
 HIGH WATER MARK LOC. 18 SCOTTSVILLE
 HIGH WATER MARK LOC. 19 SCOTTSVILLE
 HIGH WATER MARK LOC. 20 SCOTTSVILLE

BRASWELL Tie & Log Co.
 SCATTERED LOGS.

PASSENGER FREIGHT DEPOT

56

FOUNTAIN RUN ROAD

COUNTY ROAD

MAIN

7

**SCOTTSVILLE
GRADED SCHOOL**
 NO LIGHTS

NO EXPOSURE ANY SIDE.

PEACH

ALLEN COUNTY FAIR GROUNDS.
 NO FIRE APPARATUS.

Located 1/2 Mile N of Court Ho.

NO EXPOSURE ANY SIDE.

Scale of Feet.
 50 40 30 20 10 0 100 150

HORSE SHED.

MAY 1913
SCOTTVILLE
KY.

2



18

22

23

3RD ST.

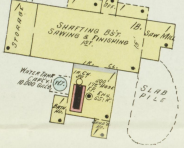
4TH ST.

SPoke SHED

WARE HO.

J. W. ALLEN, SPOKE FACTORY

NEAR WITCHAMER HERMAN CEMENT DIVISION
NO HEAT - FULL SURVIVAL - LIGHTS OIL LAMP
ELECTRICITY SUPPLIED FROM SCOTTSVILLE
LADLEMAN JIMMY GOSDIN F.P., 37' 3 1/2" x 5'
CAPACITY 5000 GALLONS PER HOUR TO BE
CON'D. TO PUMP.



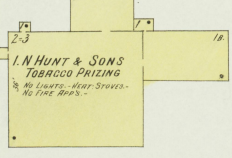
SCATTERED LOGS



YARD
**J. D. READ & CO.
SAW MILL**
NO WASTE - NO LIGHTS -
NO HEAT - FULL WASTE -
NO FIRE APPS.

FORMERLY
**LOVE, BOYD & CO.
SAW MILL**

N O E X P O S U R E



**I. N. HUNT & SONS
TOBACCO PACKING**
NO LIGHTS - HEAT STOVES -
NO FIRE APPS.

GLASGOW ROAD BEYOND

**TURNER, DRY & WOOLWORTH
HANDLE FACTORY**

NO WASTE - NO LIGHTS - NO HEAT -
FULL WASTE - NO FIRE APPS.

