

17-Ed83
2:
v. 45, no. 8

Kentucky High Schools List and Classification 1976-1977

GOVT. PUB. DEPT.

NOV 22 1977

M. I. KING LIBRARY



Classification of Schools

Comprehensive

A school that meets regulatory requirements as prescribed by the State Board of Education, including the minimum days set for classroom instruction, and that provides an enriched program of studies and other features beyond those required for a Standard classification may be considered for Comprehensive rating. In the Comprehensive school, major emphasis should be placed on meeting the special needs and interests of students through broad academic, exploratory, and co-curricular experiences.

Standard

A school that meets regulatory requirements as prescribed by the State Board of Education, including the minimum days set for classroom instruction, and that substantially meets all of the criteria included in these standards may be considered for a Standard rating. All criteria not otherwise specifically designated shall apply to this classification.

Basic

A school that meets regulatory requirements as prescribed by the State Board of Education, including the minimum days set for classroom instruction, but fails to meet the minimum requirements for a Standard rating may be considered for a Basic rating.

Provisional

A school that meets regulatory requirements as prescribed by the State Board of Education, including the minimum days set for classroom instruction, but fails to meet the minimum requirements for a Basic rating may be considered for a Provisional rating.

Special School Accreditation

A school that meets regulatory requirements as prescribed by the State Board of Education, including the minimum days set for classroom instruction, but offers special programs or partial programs resulting from phasing in or phasing out of grades, alternative programs and certain other programs designed to meet individual needs of students may be considered for Special School Accreditation rating.

Educational Arrangements

Local Boards of Education may make arrangements for certain types of educational opportunities not otherwise available through regular school operations and designate where school records will be kept and credit given.

Emergency

Schools that do not fit the scheme of classification of Comprehensive, Standard, Basic or Provisional.

Kentucky High Schools Lists and Classification 1976-1977

Bureau of Instruction
Randy Lowe Kimbrough, Asst. Supt.
Division of Supervision, Accreditation and Organization

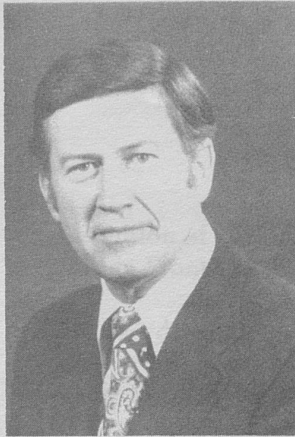
Kentucky Department of Education
James B. Graham, Superintendent

Educational Bulletin Series Vol. XLV No. 8

Winnipeg High School
1885-1922

Winnipeg High School
1885-1922

Sche
Provisio



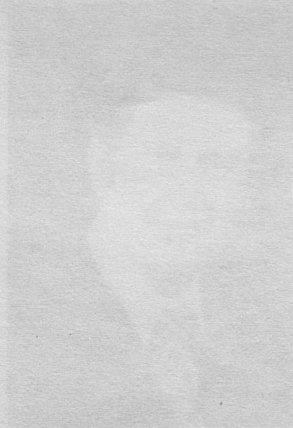
Foreword

The Kentucky High Schools 1976-77 Bulletin contains pertinent data relating to secondary education in all high schools within the state.

Included is information which clearly demonstrates increasing efforts to meet our responsibilities in secondary education.

As these responsibilities continue to grow, we hope that this publication will provide assistance to those working for improved educational opportunities.

James B. Graham
Superintendent of Public Instruction



Foreword

The Kentucky High Schools 1970-71 Bulletin contains pertinent data relating to secondary education in all high schools within the state.

Included is information on which study, diagnosis, and planning efforts are based and reports of progress in secondary education.

As these responsibilities continue to grow, we hope that this publication will provide assistance to those working for improved educational opportunities.

James B. Graham
Superintendent of Public Instruction

Table of Contents

	Page
Definition of Classification Rating (Inside Front Cover)	
Foreword	iii
Table I Types of High School Organizations and Number of Each	1
Table II Complete High Schools Offering Programs Through the Twelfth Grade Distributed as to Size 1962-63 Through 1976-77	2
Table III Number of High Schools by Years 1967-68 to 1976-77	3
Table IV High Schools Accredited Through Grade Twelve 1967-68 to 1976-77	3
Table V Distribution of School Enrollment 1976-77	4
Table VI Growth by Years in Different Types of High Schools	5
Table VII Distribution of Kentucky Secondary Schools 1975-76, 1976-77	6
High School Principals	7
Kentucky High Schools 1976-77	19
Special Education Centers 1976-77	36
Educational Arrangements	37

Table of Contents

Exhibition of Classified Reports (Classified from 1901)

Foreword

Table I Types of High School Organization and Number of Each

Table II Complete High Schools Existing Through the Twelfth Grade (Announced as to Date 1903-04 through 1920-21)

Table III Number of High Schools by Year 1907-08 to 1920-21

Table IV High Schools Accredited Through Grade Twelve 1907-08 to 1920-21

Table V Distribution of School Personnel 1920-21

Table VI Growth by Years in Different Types of High Schools

Table VII Distribution of Kentucky Secondary Schools 1915-16 to 1920-21

High School Principals

Kentucky High Schools 1916-17

Special Education Centers 1915-16

Statistical Arrangements

Kentucky High Schools — 1976-77

Kentucky public and private high schools are classified and accredited by the State Board of Education. This requirement is set forth in the law which requires that each school district in the state provide an accredited twelve-grade program and that rules and regulations be adopted governing the quality of this program. The law also provides that the "Superintendent of Public Instruction shall annually prepare or cause to be prepared and submit for approval and publication by the State Board of Education a list of all public and private high schools or other secondary schools in the state, showing their classifications." Accredited classifications are given each year by official action of the Kentucky State Board of Education on recommendations of the staff in the Division of Supervision-Accreditation-Organization, State Department of Education. The Committee on Secondary schools has worked in close cooperation with the Instructional staff in an advisory capacity on arriving at the recommended ratings.

This year there are 395 high schools. Table I which follows shows the number of schools classified according to the type of organization and the controlling authority under which they operate.

Table I
Types of High School Organizations and Number of Each

Type of Organization	County District	Independent District	State or Federal	Private	Total
Grades 7-9	43	5	1	6	55
Grades 7-10	0	0	0	3	3
Grades 7-11	1	0	0	1	2
Grades 7-12	39	26	1	15	81
Grade 9	1	0	0	2	3
Grades 8-10	1	0	0	0	1
Grades 8-12	1	3	0	2	6
Grades 9-10	0	0	0	4	4
Grades 9-11	0	0	0	1	1
Grades 9-12	150	25	4	36	215
Grades 10-11	1	0	0	0	1
Grades 10-12	18	4	1	0	23
TOTALS	255	63	7	70	395

Of the 395 schools operating, 322 are high schools offering a Program of Studies through the twelfth grade, and are considered complete high schools. The complete high schools show a decline from year to year which means that the high schools are becoming larger, making it practicable to offer a broader Program of Studies for the youth of the State.

Table II shows the number of complete high schools and the change in number for a fifteen-year period from 1962-63 to 1976-77. In this period of time, the number of high schools have decreased from 452 to 322, or 130 fewer than existed 15 years ago.

Table II
Complete High Schools Offering Programs Through
the Twelfth Grade Distributed as to Size
1962-63 Through 1976-77

Year	0-99	100-199	200-299	300-499	500-999	Above 1,000	Total
1962-63	38	83	79	119	94	39	452
1963-64	35	60	73	105	104	48	425
1964-65	27	58	68	99	112	51	451
1965-66	20	51	67	104	105	53	400
1966-67	17	59	55	92	112	52	387
1967-68	21	72	58	89	97	45	382
1968-69	17	64	50	80	105	48	364
1969-70	25	46	42	77	121	50	361
1970-71	16	40	41	82	115	56	350
1971-72	13	37	42	79	114	65	350
1972-73	13	33	32	77	116	66	337
1973-74	14	27	37	76	111	70	335
1974-75	16	22	35	63	114	71	321
1975-76	13	23	33	59	120	71	319
1976-77	18	25	32	57	112	78	322

The common type of high school organization conforms to either a six-year high school, grades 7-12; or a four-year high school grades 9-12. This year there are 81 six-year high schools and 215 four-year high schools. Last year there were 78 six-year high schools and 206 four-year high schools. By far the greatest number of these schools are organized as grades 9-12.

In Table III, there is an accumulation of information concerning the number of high schools representing the growth since 1967-68 to 1976-77. It is interesting to notice that since the school year of 1967-68 when there were 438 schools that there are now only 395 or a decrease of 43 schools in this period of time. This is evidence that the high schools of the Commonwealth of Kentucky are becoming larger and therefore offering the potentials of providing a stronger program of instruction.

Table III
Number of High Schools by Years
1967-68 to 1976-77

School Year	Public High Schools	Non-Public High Schools	Totals
1967-68	359	79	438
1968-69	357	72	429
1969-70	350	69	419
1970-71	356	63	419
1971-72	351	60	411
1972-73	341	59	400
1973-74	345	58	403
1974-75	339	59	398
1975-76	331	64	395
1976-77	318	77	395

Table IV similar information to that presented in Table III except that the information presented applies to the high schools that offer a complete program of education through the twelfth grade.

Table IV
High Schools Accredited Through Grade Twelve
1967-68 to 1976-77

School Year	Public High Schools	Non-Public High Schools	Totals
1967-68	308	74	382
1968-69	299	65	364
1969-70	295	66	361
1970-71	295	55	350
1971-72	296	57	353
1972-73	285	52	337
1973-74	284	51	335
1974-75	270	51	321
1975-76	266	53	319
1976-77	263	59	322

Table V
Distribution of School Enrollment 1976-77
High School, Pupils Enrolled

	7	8	9	10	11	12	Total Sp. Ed.	Total Enroll.	Total Staff
Counties	16,308	17,197	57,293	51,543	45,406	38,804	2,346	228,897	11582.0
Independents	2,864	4,119	8,432	7,604	6,908	6,315	281	36,523	1971.3
State or Federal	291	270	586	563	439	393	0	2,542	203.3
Private or Parochial	253	294	2,074	2,075	1,840	1,796	0	8,332	827.2
TOTALS	19,716	21,880	68,385	61,785	54,593	47,308	2,627	276,294	14583.8

The number of pupils enrolled in the high schools shows a decrease. This year there is a decrease of over 5,738 pupils.

**Table VI Growth By Years
in Different Types of High Schools**

School Year	Public High Schools	Non-Public High Schools	Totals
1967-68	237,232	23,710	260,942
1968-69	245,215	22,113	267,328
1969-70	249,495	20,980	270,475
1970-71	260,438	19,415	279,853
1971-72	266,124	18,777	284,901
1972-73	264,026	18,100	282,126
1973-74	265,276	18,235	283,511
1974-75	267,794	15,889	283,683
1975-76	262,041	19,991	282,032
1976-77	265,420	10,874	276,294

**Distribution of Kentucky Secondary Schools
1975-76, 1976-77**

Classification	County		Independent		Nonpublic		TOTAL	
	75-76	76-77	75-76	76-77	75-76	76-77	75-76	76-77
Fully Accredited								
Comprehensive	*86	**90	*19	**20	4	5	109	115
Standard	120	117	43	40	31	32	194	189
Basic	30	22	2	1	16	15	48	38
Provisional	—	—	—	—	5	8	5	8
TOTAL Fully Accredited Schools	236	229	64	61	56	60	356	350
Accredited								
Emergency	1	1	—	—	2	3	3	4
Special School Accreditation	5	5	1	1	6	14	12	20
TOTAL Accredited	6	6	1	1	8	17	15	24
Cooperative Accreditation Program	32	28	3	4	—	—	35	32
GRAND TOTAL	274	254	68	64	64	77	*395	**395

* 11 Comprehensive included in CAP Totals

** 11 Comprehensive included in CAP Totals

HIGH SCHOOL PRINCIPALS 1976*77

DISTRICT	SCHOOL	PRINCIPAL	ADDRESS	TELEPHONE
ADAIR CO	ADAIR CO HS	ALMON SULLIVAN JR	COLUMBIA	502 384-2751
ALLEN CO	ALLEN CO HS	BENNIE J KEEN	SCOTTSVILLE	502 622-4119
ANDERSON CO	ANDERSON CO HS WESTERN HS	WAYNE KING ROBERT B TURNER	LAWRENCEBURG LAWRENCEBURG	502 839-3431 502 839-3608
BALLARD CO	BALLARD MEMORIAL HS	CHESTER W ANDERSON	BARLOW	502 665-5151
BARREN CO	AUSTIN TRACY JHS BARREN CO SR HS HISEVILLE JHS PARK CITY JHS TEMPLE HILL JHS	ROBERT M CONKIN JAMES C COOMER FRANK P NEWBERRY CARROLL E FURLONG W A ROCK	LUCAS GLASGOW HISEVILLE PARK CITY GLASGOW	502 646-2236 502 651-6315 502 453-2611 502 749-2665 502 427-2611
CAVERNA IND	CAVERNA HS	DAVID STEPHENS	HORSE CAVE	502 773-2628
GLASGOW IND	GLASGOW HS	CHARLES B HONEYCUTT	GLASGOW	502 651-8801
BATH CO	BATH CO HS	EWELL SMOOT JR	OWINGSVILLE	606 674-6325
BELL CO	BELL CO HS LONE JACK HS	JAMES A PURSIFULL ERNEST C SLUSHER	PINEVILLE FOUR MILE	606 337-2349 606 337-2425
MIDDLESBORO IND	MIDDLESBORO HS	JOHN C PATTERSON	MIDDLESBORO	606 248-1000
PINEVILLE IND	PINEVILLE HS	WILLIAM E ADAMS	PINEVILLE	606 337-2361
BOONE CO	BOONE CO HS CONNER JHS CONNER SR HS OCKERMAN JHS	GEORGE K TOADVINE PHILLIP RHEA ROLLINS LARRY A RYLE PAT C WALLACE	FLORENCE HEBRON HEBRON FLORENCE	606 371-6020 606 689-7616 606 689-7884 606 371-8656
WALTON VERONA IND	WALTON VERONA HS	GARY MUNSIE	WALTON	606 485-7721
BOURBON CO	BOURBON CO HS	WILLIAM G CASE	PARIS	606 987-2550
BOURBON CO	MILLERSBURG MIL INST HS	ALVIN C HADLEY	MILLERSBURG	606 484-3352
PARIS IND	PARIS HS	HOMER H GOINS	PARIS	606 987-4545
BOYD CO	BOYD CO SR HS CATLETTSBURG JHS SUMMIT JHS	ALLAN J OSBORNE RALPH R PHELPS THOMAS G SALYER	ASHLAND CATLETTSBURG ASHLAND	606 928-6473 606 739-4181 606 928-9547
ASHLAND IND	COLES JHS PAUL G BLAZER SR HS PUTNAM JHS HOLY FAMILY HS	CLAUDE BLANTON GLENN A RIEDEL JAMES W TOWLER SR ROSE F SCHIFFERLI	ASHLAND ASHLAND ASHLAND ASHLAND	606 324-6266 606 325-4706 606 324-5911 606 324-7040
ASHLAND IND	PRIV.			
FAIRVIEW IND	FAIRVIEW HS	WALTER WILLIS	ASHLAND	606 324-9226

HIGH SCHOOL PRINCIPALS 1976*77

DISTRICT	SCHOOL	PRINCIPAL	ADDRESS	TELEPHONE
BOYLE CO	BOYLE CO HS	CHARLES W SCOTT	DANVILLE	606 236-5047
DANVILLE IND	DANVILLE HS	DON M TURNER	DANVILLE	606 236-6373
DANVILLE IND STATE	KY SCH FOR DEAF HS	EDWARD F PELTIER	DANVILLE	606 236-5132
BRACKEN CO	BRACKEN CO HS	R W ELLINGTON	BROOKSVILLE	606 735-3153
AUGUSTA IND	AUGUSTA HS	MARVIN BRADLEY	AUGUSTA	606 756-2145
BREATHITT CO	BREATHITT CO HS	WILLIAM A TOLER	JACKSON	606 666-2845
BREATHITT CO PRIV.	MT CARMEL HS	VERDON D HIGGINS	JACKSON	606 666-5048
	OAKDALE CHRISTIAN HS	WARREN A MCMULLEN	JACKSON	606 666-5442
	RIVERSIDE CHRISTIAN TRG HS	DORAN J HOSTETLER	LOST CREEK	606 666-2359
JACKSON IND	JACKSON HS	JAMES B GOFF	JACKSON	606 666-5164
BRECKINRIDGE CO	BRECKINRIDGE CO HS	JACK T PENDERGRAPH	HARNED	502 756-2149
BRECKINRIDGE CO PRIV.	ST ROMUALD HS	SR MARY A MATTHEWS	HARDINSBURG	502 756-5504
CLOVERPORT IND	FREDERICK FRAIZE HS	WAYLAND D JOHNSTON	CLOVERPORT	502 788-3388
BULLITT CO	BULLITT CENTRAL SR HS	GEORGE E VALENTINE	SHEPHERDSVILLE	502 543-7021
	HEBRON JHS	SUE POWELL	SHEPHERDSVILLE	502 957-3540
	MT WASHINGTON JHS	CECIL MATTINGLY	MT WASHINGTON	502 538-4227
	NORTH BULLITT HS	TOM COLLINS	SHEPHERDSVILLE	502 957-2186
	SHEPHERDSVILLE JHS	ROGER A PHELPS	SHEPHERDSVILLE	502 543-7614
BUTLER CO	BUTLER CO HS	DARREL C HAMPTON	MORGANTOWN	502 526-3753
CALDWELL CO	CALDWELL CO SR HS	CHARLES T ELDER	PRINCETON	502 365-3531
	CALDWELL CO JHS	DENNIS J COX	PRINCETON	502 365-9566
CALLOWAY CO	CALLOWAY CO HS	RONALD D MCALISTER	MURRAY	502 753-5479
MURRAY IND	MURRAY HS	DR RAY REEVES	MURRAY	502 753-5202
CAMPBELL CO	CAMPBELL CO HS	GLENDON A RAVENSCRAFT	ALEXANDRIA	606 635-2191
CAMPBELL CO PRIV.	BISHOP BROSSART HS	DON FANGMAN	ALEXANDRIA	606 635-2108
BELLEVUE IND	BELLEVUE HS	FRANK BRUNS	BELLEVUE	606 261-2980
DAYTON IND	DAYTON HS	WILLIAM YOUNG	DAYTON	606 261-4357
FT THOMAS IND	HIGHLANDS HS	CHESTER A TURNER	FT THOMAS	606 441-1301
FT THOMAS IND PRIV.	OUR LADY OF THE HIGHLANDS HS	SR MARY ITA MULVIHILL	FT THOMAS	606 441-0692
NEWPORT IND	NEWPORT ALTERNATE HS	EDWARD A LINDSLEY	NEWPORT	606 491-1125
	NEWPORT HS	GEORGE L FRAKES	NEWPORT	606 491-1125
	NEWPORT CATHOLIC HS	BR MATTHEW SMITH	NEWPORT	606 441-7100
	OUR LADY OF PROVIDENCE ACAD HS	SR MARGARET A KRAEMER	NEWPORT	606 261-6790
SILVER GROVE IND	SILVER GROVE HS	TIM BARROW	SILVER GROVE	606 441-3873

HIGH SCHOOL PRINCIPALS 1976*77

DISTRICT	SCHOOL	PRINCIPAL	ADDRESS	TELEPHONE
CARLISLE CO	CARLISLE CO HS	BURLEY MATHIS	BARDWELL	502 628-3119
CARROLL CO	CARROLL CO HS	HARRY LOY	CARROLLTON	502 732-5215
CARTER CO	EAST CARTER CO HS WEST CARTER CO HS	HARLAN R FLEMING ANDREW J FULTZ	GRAYSON OLIVE HILL	606 474-5714 606 286-2481
CASEY CO	CASEY CO HS	HUMPHREY T ELLIOTT	LIBERTY	606 787-6151
CHRISTIAN CO	CHRISTIAN CO HS	BARNEY G THWEATT	HOPKINSVILLE	502 886-4463
CHRISTIAN CO FED.	HOPKINSVILLE HS	ROY A WEATHERLY	HOPKINSVILLE	606 886-3384
CHRISTIAN CO PRIV.	FORT CAMPBELL SR HS FORT CAMPBELL JHS UNIVERSITY HEIGHTS ACAD HS	BILL R PERRY WALTER R CELUSTA K L BARTON	FT CAMPBELL FT CAMPBELL HOPKINSVILLE	502 798-2540 502 798-2575 502 886-0254
CLARK CO	GEO ROGERS CLARK HS	ROBERT D CAMPBELL	WINCHESTER	606 744-6111
CLAY CO	CLAY CO HS	LEE BROWN	MANCHESTER	606 598-3737
CLAY CO PRIV.	ONEIDA BAPTIST INSTITUTE HS	ROBERT C HALCOMB	ONEIDA	606 847-2202
CLINTON CO	CLINTON CO HS	PERRY C HAY	ALBANY	606 387-5569
CRITTENDEN CO	CRITTENDEN CO HS	A Y HODGE JR	MARION	502 965-2248
CUMBERLAND CO	CUMBERLAND CO HS	DAVID R SHARP	BURKESVILLE	502 864-3451
DAVIESS CO	APOLLO HS	FRANK A LIST	OWENSBORO	502 685-3121
DAVIESS CO PRIV.	DAVIESS CO HS MT ST JOSEPH ACAD HS TRINITY HS	WINFRED P WHEELER SR HELEN MARIE PFOHL JAMES HURM	OWENSBORO MAPLE MOUNT WHITESVILLE	502 684-5285 502 229-4128 502 233-5533
OWENSBORO IND	OWENSBORO HIGH SCHOOL	BILL VAN WINKLE	OWENSBORO	502 684-7221
OWENSBORO IND PRIV.	OWENSBORO CATHOLIC HS	REV GERALD CALHOUN	OWENSBORO	502 684-3215
EDMONSON CO	EDMONSON CO HS	JOHNNY VINCENT	BROWNSVILLE	502 597-2182
ELLIOTT CO	ELLIOTT CO HS	WM CALHOUN	SANDY HOOK	606 738-5225
ESTILL CO	ESTILL CO HS	DANNY CLICK	IRVINE	606 723-3537
FAYETTE CO	BEAUMONT JHS BRYAN STATION SR HS BRYAN STATION JHS CRAWFORD JHS HENRY CLAY SR HS JESSIE M CLARK JHS LAFAYETTE SR HS LEESTOWN JHS LEXINGTON JHS MORTON JHS	ROBERT C HUME LEO H BREWSAUGH JAMES C SHIFFLETT JAMES A KOMARA BILL C HURT DEAN L SCHRYER DWIGHT L PRICE RAFAEL A CORDOVES WALDEN E LANDER JAMES D CASEY	LEXINGTON LEXINGTON LEXINGTON LEXINGTON LEXINGTON LEXINGTON LEXINGTON LEXINGTON LEXINGTON LEXINGTON	606 277-0359 606 299-4027 606 299-4317 606 299-2213 606 269-3326 606 277-7683 606 277-5395 606 254-9223 606 252-8166 606 266-3281

HIGH SCHOOL PRINCIPALS 1976*77

DISTRICT	SCHOOL	PRINCIPAL	ADDRESS	TELEPHONE
FAYETTE CO	SOUTHERN JHS	WILLIAM H PARTIN	LEXINGTON	606 272-5313
	TATES CREEK SR HS	ROBERT W FEATHERSTON	LEXINGTON	606 272-1512
	TATES CREEK JHS	WILLIAM A FARNAU	LEXINGTON	606 272-3452
FAYETTE CO	WINBURN JHS	EDWIN C BRAND	LEXINGTON	606 299-7711
	LEXINGTON CATHOLIC HS	REV ROBERT H NIEBERDING	LEXINGTON	606 277-7183
	BLUE GRASS BAPTIST HS	JAMES H MILLER	LEXINGTON	606 272-1217
	NEW COVENANT ACAD HS	PETER DOANE	LEXINGTON	606 272-9560
	SAYRE HS	GLENN B BELL	LEXINGTON	606 254-1361
	THE LEXINGTON SCHOOL JHS	NORTON G PRITCHETT JR	LEXINGTON	606 277-7481
FLEMING CO	FLEMING CO HS	FAIRCE O WOODS	FLEMINGSBURG	606 845-6601
FLOYD CO	ALLEN CENTRAL HS	JAMES O DINGUS	EASTERN	606 358-9543
	BETSY LAYNE HS	RUSSELL FRAZIER	BETSY LAYNE	606 478-9138
	MCDOWELL HS	HUGO E MILLER	MCDOWELL	606 377-6202
	PRESTONSBURG HS	WILLIAM R HUGHES	PRESTONSBURG	606 886-2252
	WHEELWRIGHT HS	WILBUR R JAMERSON	WHEELWRIGHT	606 452-2110
FRANKLIN CO	BONDURANT JHS	MARGARET HOHMAN	FRANKFORT	502 223-2301
	ELKHORN JHS	FLOYD J WHITAKER	FRANKFORT	502 223-7653
FRANKLIN CO	FRANKLIN CO SR HS	ROBERT W HOAGLAND	FRANKFORT	502 695-2500
	TABERNACLE CHRISTIAN HS	REV GUY GOODELL	MIDWAY	502 695-5302
FRANKFORT IND	FRANKFORT HIGH SCHOOL	ALBERT L WALL	FRANKFORT	502 223-8030
FRANKFORT IND	GOOD SHEPHERD JHS	SR DOROTHY ROSE RECKERS	FRANKFORT	502 223-5041
FULTON CO	FULTON CO HS	CHARLES TERRETT	HICKMAN	502 236-3168
FULTON IND	FULTON CITY HS	BARKLEY JONES	FULTON	502 472-1741
GALLATIN CO	GALLATIN CO HS	BILLY E PREWITT	WARSAW	606 567-5041
GARRARD CO	GARRARD CO HS	JOHNNIE R LASWELL	LANCASTER	606 792-2146
GRANT CO	GRANT CO HS	CARL W WEBSTER	DRY RIDGE	606 824-4433
WILLIAMSTOWN IND	WILLIAMSTOWN HS	SHIRLEY D WAGONER	WILLIAMSTOWN	606 824-4421
GRAVES CO	CUBA HS	CHARLES W FORD	MAYFIELD	502 382-2336
	FANCY FARM HS	DONALD M JONES	FANCY FARM	502 623-4349
	FARMINGTON HS	C W JONES	FARMINGTON	502 345-2171
	LOWES HS	DONALD E SPICER	LOWES	502 674-5544
	SEDALIA HS	JIMMY C WIGGINS	SEDALIA	502 328-8256
	SYMSONIA HS	CECIL REID	SYMSONIA	502 851-3231
GRAVES CO	WINGO HS	JAMES A BAKER	WINGO	502 376-2236
	CHAS L SHEDD APSL RES ACAD HS	PHILLIP W PARKER	MAYFIELD	502 247-8007
MAYFIELD IND	MAYFIELD HS	RALPH E COLBY	MAYFIELD	502 247-4461
GRAYSON CO	GRAYSON CO HS	KENNETH RAY	LEITCHFIELD	502 259-4078
GREEN CO	GREEN CO HS	ROBERT S PICKETT	GREENSBURG	000 000-0000

HIGH SCHOOL PRINCIPALS 1976*77

DISTRICT	SCHOOL	PRINCIPAL	ADDRESS	TELEPHONE
GREENUP CO	GREENUP CO SR HS	DWIGHT D JOHNSON	GREENUP	606 473-9812
RACELAND IND	RACELAND HS	LARRY J HECK	RACELAND	606 836-8241
RUSSELL IND	RUSSELL HS	RICHARD A BAKER	RUSSELL	606 836-8112
HANCOCK CO	HANCOCK CO HS	HERBERT S YOUNG	LEWISPORT	502 927-6953
HARDIN CO	EAST HARDIN HS	WILLIAM E REYNOLDS	GLENDAL	502 854-4211
	HARDIN CENTRAL JHS	CLETUS COATS	CECILIA	502 737-6833
	JAMES T ALTON JHS	ROSS B PAYTON	VINE GROVE	502 877-2135
	NORTH HARDIN SR HS	CLYDE STORY	RADCLIFF	502 351-3167
	WEST HARDIN HS	DANE HICKS	STEPHENSURG	502 862-3924
	FORT KNOX HS	ROBERT B BURROW	FORT KNOX	502 624-6647
HARDIN CO	FED.			
ELIZABETHTOWN IND	ELIZABETHTOWN SR HS	CHARLES RAWLINGS	ELIZABETHTOWN	502 769-3381
	TALTON K STONE JHS	ROBERT ARMES JR	ELIZABETHTOWN	502 769-3082
HARLAN CO	CUMBERLAND HS	DILLARD PRATER	CUMBERLAND	606 589-4625
	EVARTS HS	O G ROADEN	EVARTS	606 837-2502
	JAMES A CAWOOD HS	JOHN H HOWARD	HARLAN	606 573-5027
HARLAN IND	HARLAN HS	THOMAS S WARD	HARLAN	606 573-3711
LYNCH IND	LYNCH HS	ENOCH FOUTCH JR	LYNCH	606 848-5486
LYNCH IND	LYNCH CHRISTIAN ACAD JHS	DIANA OVERTON	LYNCH	606 848-2600
HARRISON CO	HARRISON CO HS	EDWARD J LOWDENBACK	CYNTHIANA	606 234-3253
HART CO	HART CO HS	WAYMON DENISON	MUNFORDVILLE	502 524-9341
HENDERSON CO	HENDERSON CO SR HS	HOWARD R CRITTENDEN	HENDERSON	502 827-2506
	HENDERSON CITY NINTH GR CTR	WILLIAM H WOMACK	HENDERSON	502 826-9568
HENRY CO	HENRY CO HS	RONALD E YOUNG	NEW CASTLE	502 346-8421
EMINENCE IND	EMINENCE HS	DALTON OAK	EMINENCE	502 845-4071
HICKMAN CO	HICKMAN CO HS	JAMES H PHILLIPS	CLINTON	502 653-5461
HOPKINS CO	MADISONVILLE N HOPKINS SR HS	FLOYD BROWN	MADISONVILLE	502 821-8503
	MADISONVILLE JHS	PAUL A ARMSTRONG	MADISONVILLE	502 821-2824
	SOUTH HOPKINS HS	WILLIAM H DUNNING	NORTONVILLE	502 676-3443
	WEST HOPKINS HS	A O RICHARDS	NEBO	502 249-3151
	MADISONVILLE CHRISTIAN SCH HS	STEVE MAJORS	MADISONVILLE	502 825-1291
HOPKINS CO	PRIV.			
DAWSON SPRINGS IND	DAWSON SPRINGS HS	PHILIP D BACK	DAWSON SPRINGS	502 797-3811
JACKSON CO	JACKSON CO HS	JAMES T MARTIN SR	MCKEE	606 287-7155

HIGH SCHOOL PRINCIPALS 1976*77

DISTRICT		SCHOOL	PRINCIPAL	ADDRESS	TELEPHONE
JACKSON CO	PRIV.	ANNVILLE INSTITUTE HS	JOHN SMITH	ANNVILLE	606 364-5109
JEFFERSON CO		AHRENS HS	BYRON H BELL	LOUISVILLE	502 583-1641
		ATHERTON HS	CLETUS L HUBBS	LOUISVILLE	502 459-3610
		BALLARD HS	PATRICK L CRAWFORD	LOUISVILLE	502 425-5076
		BROWN H S	MARTHA ELLISON	LOUISVILLE	502 581-4545
		BUTLER HS	HERBERT L HATFIELD	LOUISVILLE	502 448-4620
		CENTRAL HS	JOSEPH MCPHERSON	LOUISVILLE	502 584-6193
		DOSS HS	JOHN S PITTENGER	LOUISVILLE	502 935-2948
		DUPONT MANUAL HS	GEORGE E SAUER JR	LOUISVILLE	502 636-1441
		DURRETT HS	JAMES B SMITH	LOUISVILLE	502 368-5831
		EASTERN HS	GEORGE E MORRISON	MIDDLETOWN	502 245-4161
		EMERSON TEENAGE PARENT HS	ROBERT EWING	LOUISVILLE	502 634-0551
		FAIRDALE HS	CHARLES SUMMERS	FAIRDALE	502 366-1468
		FERN CREEK HS	J V RESCHAR SR	FERN CREEK	502 239-3267
		IROQUOIS HS	EDWIN K BINFORD	LOUISVILLE	502 366-0373
		JEFFERSON HS	STANLEY K WHITAKER	LOUISVILLE	502 969-3271
		JEFFERSON CO TRADITIONAL HS	JAMES TAYLOR	LOUISVILLE	502 964-7878
		JEFFERSONTOWN HS	WILLIAM R CRAIGMYLE	JEFFERSONTOWN	502 267-7486
		LONGFELLOW ALT HS	K R ANTHONY	LOUISVILLE	502 456-1281
		MALE HS	HAROLD E ANDREWS	LOUISVILLE	502 582-2613
		MOORE HS	LUTHER E MCDOWELL JR	LOUISVILLE	502 964-3376
		PLEASURE RIDGE PARK HS	CLAUDE PURVIS	PLEASURE RIDGE	502 935-5711
		SENECA HS	TOM MCCARTY	LOUISVILLE	502 451-4330
		SHAWNEE HS	JOHN WHITING	LOUISVILLE	502 774-2353
		SOUTHERN HS	JAMES BURCH	LOUISVILLE	502 969-1331
		STUART HS	DENZIL J RAMSEY	VALLEY STATION	502 935-3155
		VALLEY HS	WALTER J PICKETT	VALLEY STATION	502 937-2300
		WAGGENER HS	ARTHUR K DRAUT	LOUISVILLE	502 895-0567
		WESTERN HS	JOHN D BROWN	LOUISVILLE	502 447-3221
		WESTPORT ROAD HS	IRVIN K RICE	LOUISVILLE	502 425-2541
JEFFERSON CO	STATE	KENTUCKY SCH FOR BLIND HS	RICHMOND H MARCY	LOUISVILLE	502 897-1583
JEFFERSON CO	PRIV.	ANGELA MERICI HS	SR LOUISE M WILLENBRINK	LOUISVILLE	502 447-0511
		ASSUMPTION HS	SR THERESA M OSBORNE	LOUISVILLE	502 428-9551
		BISHOP DAVID HS	JOHN HOLL	LOUISVILLE	502 447-4363
		DESALES HS	REV FARRELL KANE	LOUISVILLE	502 368-6510
		HOLY ROSARY ACAD HS	SR ANN FREDERICK LEONARD	LOUISVILLE	502 366-4561
		MERCY ACAD HS	SR MARGARET GURREN	LOUISVILLE	502 584-4273
		PRESENTATION ACAD HS	SR JEAN VESSELS	LOUISVILLE	502 583-5935
		SACRED HEART ACAD HS	SR M LAURANA BURKE	LOUISVILLE	502 897-1811
		ST XAVIER HS	BR JOHN WILLS	LOUISVILLE	502 636-2525
		TRINITY HS	REV THOMAS DUERR	LOUISVILLE	502 895-9427
		BETH HAVEN CHRISTIAN HS	DON C MANGUS	VALLEY STATION	502 935-8550
		EVANGEL SCH INC HS	DR C THOMAS LUISKUTTY	LOUISVILLE	502 968-8390
		FAITH TEMPLE SCHS INC HS	LYNVEL K LAY	LOUISVILLE	502 361-9296
		FARMDALE CHRISTIAN SCH HS	KENNETH GRISSE	LOUISVILLE	502 969-3214
		GETHSEMANE CHRISTIAN SCH HS	ARTHUR LEVAN LUKER	LOUISVILLE	502 969-3191
		GREATER LOUISVL JR ACAD SDA HS	GEORGE NEWMYER	LOUISVILLE	502 361-0176
		HOLY ANGELS ACAD JHS	SR MARY E GROVES	LOUISVILLE	502 589-4827
		NINTH & O CHRISTIAN HS	ROSEMARY HATCHER	LOUISVILLE	502 635-6757
		NORTHSIDE CHRISTIAN HS	REV PHILLIP BUCKNER	LOUISVILLE	502 778-1113
		PORTLAND CHRISTIAN HS	EARL C MULLINS SR	LOUISVILLE	502 778-6114
		SHIVELY CHRISTIAN SCH HS	THOMAS GOLDEN	LOUISVILLE	502 447-0664

HIGH SCHOOL PRINCIPALS 1976*77

DISTRICT		SCHOOL	PRINCIPAL	ADDRESS	TELEPHONE
JEFFERSON CO	PRIV.	SOUTH LOUISVILLE CHRISTIAN HS	WILLIAM TURNER	LOUISVILLE	502 368-6365
		EASTWOOD EDUC CTR HS	MILDRED LEMASTER	EASTWOOD	502 245-2622
		KENTUCKY COUNTRY DAY HS	JOHN R GERNERT	LOUISVILLE	502 895-3452
		LOUISVILLE COLLEGIATE HS	NANCY E KUSSROW	LOUISVILLE	502 451-5330
		WALDEN HS	DR EDWARD VERMILLION	LOUISVILLE	502 425-0587
ANCHORAGE IND		ANCHORAGE JHS	JIM A JACKSON	ANCHORAGE	502 245-2121
JESSAMINE CO		JESSAMINE CO JHS	JOHN D BROWN	NICHOLASVILLE	606 885-5561
		JESSAMINE CO SR HS	ZEB BLANKENSHIP	NICHOLASVILLE	606 885-4849
JOHNSON CO		JOHNSON CENTRAL HS	PAUL R SETSER	PAINTSVILLE	606 789-4890
PAINTSVILLE IND		PAINTSVILLE HS	PAUL W TRIMBLE	PAINTSVILLE	606 789-3881
KENTON CO		DIXIE HEIGHTS SR HS	FRED MASON	S FT MITCHELL	606 341-7650
		SIMON KENTON HS	ROBERT L ABELL	INDEPENDENCE	606 356-3541
		TURKEY FOOT HS	GILBY L GREENE	FT MITCHELL	606 341-0216
		TWENHOFEL JHS	GAY BEST	INDEPENDENCE	606 356-5559
KENTON CO	PRIV.	COVINGTON CATHOLIC HS	KENNETH J GROSS	COVINGTON	606 431-5351
		NOTRE DAME ACAD HS	SR VIRGINIA A CLEVES	COVINGTON	606 261-4300
		VILLA MADONNA ACAD HS	SR STELLA MARIE GOUGH	COVINGTON	606 331-6333
BEECHWOOD IND		BEECHWOOD HS	NEIL STIEGELMEYER	FT MITCHELL	606 331-1220
COVINGTON IND		HOLMES HS	FRED W MOEVES	COVINGTON	606 291-1104
COVINGTON IND	PRIV.	COVINGTON LATIN HS	REV EDWIN HEILE	COVINGTON	606 291-7044
		HOLY CROSS HS	FRED A BREYER	LATONIA	606 431-1335
		LASALETTE ACAD HS	SR JANET BAMBERGER	COVINGTON	606 291-5355
		CALVARY CHRISTIAN SCH HS	ELLIS CAUDILL	COVINGTON	606 356-9291
ERLANGER IND		LLOYD HS	CHARLES R FUGITT	ERLANGER	606 727-1555
ERLANGER IND	PRIV.	ST HENRY HS	RONALD ALBRINCK	ERLANGER	606 342-7522
LUDLOW IND		LUDLOW HS	CHARLES HIGHFIELD	LUDLOW	606 261-8211
KNOTT CO		CORDIA HS	BOBBY R SMITH	HAZARD	606 251-2875
		KNOTT CO CENTRAL HS	R B SINGLETON	HINDMAN	606 785-3166
KNOX CO		KNOX CENTRAL HS	CHARLES D BLACK	BARBOURVILLE	606 546-4138
		LYNN CAMP HS	CLAYTON TAYLOR	CORBIN	606 528-5429
BARBOURVILLE IND		BARBOURVILLE HS	MIKE DAVIS	BARBOURVILLE	606 546-3129
LARUE CO		LARUE CO HS	CORTLAND K COX	HODGENVILLE	502 358-3195
LAUREL CO		BUSH JHS	CHARLES MCPHETRIDGE	LIDA	606 864-2331
		HAZEL GREEN JHS	JACK SEARS	EAST BERNSTADT	606 843-6231
		LAUREL CO SR HS	R HAROLD STORM	LONDON	606 864-7371
		LILY JHS	RALPH CAMPBELL	LILY	606 864-4330
		LONDON JHS	ROLAND MOONEY	LONDON	606 864-2181
	LAUREL CO	PRIV.	LONDON CHRISTIAN ACAD JHS	MALVIN HOLDEN	LONDON

HIGH SCHOOL PRINCIPALS 1976*77

DISTRICT	SCHOOL	PRINCIPAL	ADDRESS	TELEPHONE
LAWRENCE CO	LOUISA HS	ROBERT PRICHARD	LOUISA	606 638-4574
LEE CO	LEE CO HS	GARY PACK	BEATTYVILLE	606 464-8126
LESLIE CO	LESLIE CO HS RED BIRD HS	GEORGE SIZEMORE OLEN T COLLINS	HYDEN BEVERLY	606 672-2337 606 337-5913
LETCHER CO	FLEMING NEON HS LETCHER HS WHITESBURG HS	ROY T REASON D C TAYLOR JACK M BURKICH	FLEMING LETCHER WHITESBURG	606 855-7597 606 633-2524 606 633-2339
JENKINS IND	JENKINS HS	DAVID H BANKS	JENKINS	606 832-2184
LEWIS CO	LEWIS CO HS TOLLESBORO HS	DON G GAUNCE CHARLES M HUGHES	VANCEBURG TOLLESBORO	606 796-2843 606 798-2541
LINCOLN CO	LINCOLN CO HS	JACK D PORTWOOD	STANFORD	606 365-9111
LIVINGSTON CO	LIVINGSTON CENTRAL HS	KENNETH T HARDIN	BURNA	502 988-3263
LOGAN CO	ADAIRVILLE HS AUBURN HS CHANDLERS HS LEWISBURG HS OLMSTEAD HS	JESSE L RICHARDS E HOWARD GORRELL MILBURN M SHELTON JOE K MILAM LORENZA D DAVIS	ADAIRVILLE AUBURN AUBURN LEWISBURG OLMSTEAD	502 539-7711 502 542-4181 502 542-4139 502 755-4823 502 726-3811
RUSSELLVILLE IND	RUSSELLVILLE HS	LARRY H CHELF	RUSSELLVILLE	502 726-6434
LYON CO	LYON CO HS	BUDDY L NICHOLS	EDDYVILLE	502 388-2296
MADISON CO MADISON CO	MADISON CENTRAL HS MODEL LABORATORY HS	JAMES B MOORE L STEPHEN TRAW	RICHMOND RICHMOND	606 623-1530 606 622-3766
BEREA IND	BEREA COMM HS	JAMES K MILLER	BEREA	606 986-4911
RICHMOND IND	MADISON HS	JAMES R FLEENOR	RICHMOND	606 623-4959
MAGOFFIN CO	MAGOFFIN CO H S	JACK ALLEN	SALYERSVILLE	606 349-2011
MARION CO	LEBANON JHS MARION CO SR HS ST CHARLES JHS	JAMES C HANKS CHARLES E CRAWLEY DALE E WILLINGHAM	LEBANON LEBANON LEBANON	502 692-3441 502 692-6066 502 692-4578
MARSHALL CO	BENTON JHS MARSHALL CO SR HS NORTH MARSHALL JHS SOUTH MARSHALL JHS	JACK ALEXANDER BOBBY MILLER RAY SOLOMON JOE WILSON	BENTON BENTON CALVERT CITY BENTON	502 527-9091 000 000-0000 502 395-7108 502 527-2891
MARTIN CO	SHELDON CLARK HS	WILBURN GOBLE	INEZ	606 298-3591
MASON CO	MASON CO HS	JOHN H BRANSON	MAYSVILLE	606 564-3393

HIGH SCHOOL PRINCIPALS 1976*77

DISTRICT	SCHOOL	PRINCIPAL	ADDRESS	TELEPHONE
MAYSVILLE IND	MAYSVILLE HS	ELZA WHALEN JR	MAYSVILLE	606 564-3856
MAYSVILLE IND	ST PATRICK HS	SR M JUDE BIRCK	MAYSVILLE	606 564-5949
MCCRACKEN CO	HEATH HS	THOMAS H STEPHENSON	WEST PADUCAH	502 488-3126
	LONE OAK HS	BERNIE F BEHRENDT	PADUCAH	502 554-1820
	REIDLAND HS	LINN L HARPER	PADUCAH	502 898-2441
MCCRACKEN CO	SOUTHLAND CHRISTIAN HS	REV LOUIS REEMTSM	PADUCAH	502 444-9678
PADUCAH IND	BRAZELTON JHS	JAMES R WALKER	PADUCAH	502 443-5177
	JETTON JHS	BERTON K CHAPMAN	PADUCAH	502 443-7500
	PADUCAH TILGHMAN SR HS	JOE D DALLAS	PADUCAH	502 443-6296
PADUCAH IND	ST MARY HS	SR MARY LEE KNOPF	PADUCAH	502 442-1681
MCCREARY CO	MCCREARY CO HS	ROBERT E STEPHENS	WHITLEY CITY	606 376-2213
	PINE KNOT HS	GAIL OWENS	PINE KNOT	606 354-2511
MCLEAN CO	MCLEAN CO HS	CHARLES R SUMMERS	CALHOUN	502 273-5278
MEADE CO	MEADE CO HS	VERNON K WILSON	BRANDENBURG	502 422-4931
MENIFEE CO	MENIFEE CO HS	HIRAM C WALTERS	FRENCHBURG	606 768-2373
MERCER CO	MERCER CO HS	JAMES E GASH	HARRODSBURG	606 734-4195
BURGIN IND	BURGIN HS	CHARLES G KOLASA	BURGIN	606 748-5170
HARRODSBURG IND	HARRODSBURG HS	DELMER WARREN	HARRODSBURG	606 734-5106
METCALFE CO	METCALFE CO HS	JOHN W MCCARLEY	EDMONTON	502 432-2481
MONROE CO	GAMALIEL HS	JAMES GRAVES	GAMALIEL	502 457-2341
	TOMPKINSVILLE HS	RANDALL M GRIDER	TOMPKINSVILLE	502 487-6217
MONTGOMERY CO	MONTGOMERY CO HS	RICHARD HUGHES	MT STERLING	606 498-2250
MORGAN CO	MORGAN CO HS	ERVIN B PACK	WEST LIBERTY	606 743-3705
MUHLNBERG CO	BREMEN HS	KEN E ARBUCKLE	BREMEN	502 525-3411
	DRAKESBORO CONSOLIDATED HS	JAMES L STEWART	DRAKESBORO	502 476-8411
	GRAHAM HS	CARL R SPARKS	GRAHAM	502 338-1317
	HUGHES KIRK HS	CHARLES W EADES	BEECHMONT	502 476-2204
	MUHLNBERG CENTRAL HS	PERRY F HILL	POWDERLY	502 338-3550
CENTRAL CITY IND	CENTRAL CITY HS	JIMMY L WILCOX	CENTRAL CITY	502 754-2272
GREENVILLE IND	GREENVILLE HS	JASPER R WHITEHEAD	GREENVILLE	502 338-4650
NELSON CO	BLOOMFIELD JHS	LARRY H CHEEK	BLOOMFIELD	502 252-3111
	NELSON CO SR HS	THOMAS G FLORENCE	BARDSTOWN	502 348-9046
	NEW HAVEN JHS	WILLIAM D BROADDUS	NEW HAVEN	502 549-3164
	OLD KENTUCKY HOME JHS	EDWARD THOMAS	BARDSTOWN	502 348-9224

HIGH SCHOOL PRINCIPALS 1976*77

DISTRICT	SCHOOL	PRINCIPAL	ADDRESS	TELEPHONE
BARDSTOWN IND BARDSTOWN IND	BARDSTOWN HS BETHLEHEM HS	F JUDE TALBOTT ALBERT JOHNSON	BARDSTOWN BARDSTOWN	502 348-5913 502 348-8594
NICHOLAS CO	NICHOLAS CO HS	COBBIE LEE	CARLISLE	606 289-7111
OHIO CO	FORDSVILLE HS OHIO CO HS	O J FRIZZELL RAY C JOHNSON	FORDSVILLE HARTFORD	502 276-3601 502 274-3366
OLDHAM CO OLDHAM CO	OLDHAM CO HS PEWEE VALLEY JR ACAD JHS ST FRANCIS JHS	J D MINNEHAN R ELDON ROBERTS JOHN W LLOYD-EVANS	BUCKNER PEWEE VALLEY GOSHEN	502 222-9461 502 241-4354 502 228-1197
OWEN CO	OWEN CO HS	GEORGE W BAKER	OWENTON	502 484-5509
OWSLEY CO	OWSLEY CO HS	WILSON O GABBARD	BOONEVILLE	606 593-5185
PENDLETON CO	PENDLETON CO HS	CLIFFORD WALLACE	FALMOUTH	606 654-3355
PERRY CO	BUCKHORN HS D C COMBS MEMORIAL HS M C NAPIER HS	CALLOWAY SIZEMORE DACKER COMBS JAMES W FIELDS	BUCKHORN JEFF HAZARD	606 398-7176 606 436-6811 606 436-4541
HAZARD IND	HAZARD HS	JOHN GUILLEN	HAZARD	606 436-3711
PIKE CO	BELFRY HS DORTON HS ELKHORN CITY HS FEDS CREEK HS JOHNS CREEK HS MILLARD HS MULLINS HS PHELPS HS VIRGIE HS	FRANK T WELCH JOHN G WALLACE JAMES V POWELL PAUL B TACKETT WINSTON ADKINS DONALD TACKETT MORRIS JUSTICE WILLIAM R DAVIS JAMES R KENDRICK	BELFRY DORTON ELKHORN CITY FEDS CREEK PIKEVILLE PIKEVILLE PIKEVILLE PHELPS VIRGIE	606 353-7362 606 639-2832 606 754-7981 606 835-2286 606 437-6361 606 432-3380 606 432-2733 606 456-7716 606 639-2774
PIKEVILLE IND	PIKEVILLE HS	THOMAS M SWARTZ	PIKEVILLE	606 432-0185
POWELL CO	POWELL CO HS	CEBERT GILBERT JR	STANTON	606 663-2246
PULASKI CO	BURNSIDE HS EUBANK HS NANCY HS PULASKI CO HS SHOPVILLE HS	COLLAS L SIMPSON BOB SULLIVAN BILL W MAUNEY LARRY STEWART PHILLIP R BAKER	BURNSIDE EUBANK NANCY SOMERSET SHOPVILLE	606 561-4250 606 379-6411 606 636-6461 606 679-1574 606 274-4312
SOMERSET IND	SOMERSET HS	JAMES A SEARS	SOMERSET	606 678-4721
ROBERTSON CO	DEMING HS	HARRY E MEACHAM	MT OLIVET	606 724-5713
ROCKCASTLE CO	ROCKCASTLE CO HS	CLESTON R SAYLOR	MT VERNON	606 256-4816
ROWAN CO ROWAN CO	ROWAN CO HS UNIV BRECKINRIDGE HS	MARVIN MOORE FRANK C BURNS	MOREHEAD MOREHEAD	606 784-4153 606 783-2221

16

HIGH SCHOOL PRINCIPALS 1976*77

DISTRICT	SCHOOL	PRINCIPAL	ADDRESS	TELEPHONE
RUSSELL CO	RUSSELL CO HS	HOLLIS DEHART	RUSSELL SPRINGS	502 866-3341
SCOTT CO	SCOTT CO SR HS	TOM SIMS	GEORGETOWN	502 863-2640
SHELBY CO	SHELBY CO HS	SAM CHANDLER	SHELBYVILLE	502 633-2344
SIMPSON CO	FRANKLIN SIMPSON HS	KENNETH R METCALF	FRANKLIN	502 586-3273
SPENCER CO	TAYLORSVILLE HS	TOM WILLIS	TAYLORSVILLE	502 477-2230
TAYLOR CO	TAYLOR CO HS	EDWARD L COX	CAMPBELLSVILLE	502 465-4431
CAMPBELLSVILLE IND	CAMPBELLSVILLE HS	DAVID FRYREAR	CAMPBELLSVILLE	502 465-8774
TODD CO	TODD CO CENTRAL HS	ANDREW RENICK	ELKTON	502 265-2506
TRIGG CO	TRIGG CO HS	ARNOLD S OAKEN	CADIZ	502 522-6071
TRIMBLE CO	TRIMBLE CO HS	JOHN HIGGINS	BEDFORD	502 255-3268
UNION CO	MORGANFIELD JHS	CHARLES WELLS	MORGANFIELD	502 389-1531
	STURGIS JHS	ROY D HINA	STURGIS	502 333-4008
	UNION CO SR HS	RICHARD W VINCENT	MORGANFIELD	502 389-1454
	UNIONTOWN JHS	CHARLES C MOORE	UNIONTOWN	502 822-4462
WARREN CO	WARREN CENTRAL HS	HENRY E RESCH	BOWLING GREEN	502 842-7302
	WARREN EAST HS	JOE H WATKINS	BOWLING GREEN	502 781-1277
BOWLING GREEN IND	BOWLING GREEN SR HS	DENVAL P BARRIGER	BOWLING GREEN	502 842-1674
	BOWLING GREEN JHS	SARAH H LAWS	BOWLING GREEN	502 781-4585
WASHINGTON CO	WASHINGTON CO HS	WILLIAM V CHAMBERS	SPRINGFIELD	606 336-3996
WAYNE CO	WAYNE CO HS	GEORGE O HORTON	MONTICELLO	606 348-3311
MONTICELLO IND	MONTICELLO HS	ELDON E DAVIDSON	MONTICELLO	606 348-4681
WEBSTER CO	WEBSTER CO HS	ROBERT L ROGERS	DIXON	502 639-2651
PROVIDENCE IND	PROVIDENCE HS	THOMAS W JOHNSON	PROVIDENCE	502 667-2411
WHITLEY CO	WHITLEY CO HS	HAROLD E GORDON	WILLIAMSBURG	606 549-1360
CORBIN IND	CORBIN HS	LOUIE MARTIN	CORBIN	606 528-3902
CORBIN IND	ST CAMILLUS ACAD HS	SR AMABILIS MARTINEAU	CORBIN	606 528-5077
WILLIAMSBURG IND	WILLIAMSBURG HS	JACK V FOLEY	WILLIAMSBURG	606 549-1915
WOLFE CO	WOLFE CO HS	HENRY L ALLEN	CAMPTON	606 668-8565
WOLFE CO	HAZEL GREEN ACAD HS	ALBERT B OSBORNE	HAZEL GREEN	606 662-4475
WOODFORD CO	WOODFORD CO HS	KENNETH E TIPPETT	VERSAILLES	606 873-5434
WOODFORD CO	MARGARET HALL HS	COLLEY W HILL JR	VERSAILLES	606 873-3751

17

KENTUCKY HIGH SCHOOLS 1976*77

--RATINGS-- ----- ENROLLMENT BY GRADES -----

		E	S	P	B	S	C	C	ENROLLMENT BY GRADES							TOTAL	TOTAL	GRAND TOTAL	TOTAL
		M	R	R	A	A	O	A	7	8	9	10	11	12	SPEC	7-8	9-12	TOTAL	
		G	O	S	S	M	P							ED			STAFF		
ADAIR CO																			
001 010 ADAIR CO HS					X						256	231	219	165			871	871	44.2
ALLEN CO																			
005 020 ALLEN CO HS							X				228	206	196	184	32		814	846	36.7
ANDERSON CO																			
011 020 ANDERSON CO HS					X						183	165	141	127	13		616	629	31.1
011 090 WESTERN HS					X						34	40	29	21		124	124	124	8.0
BALLARD CO																			
015 010 BALLARD MEMORIAL HS					X						142	146	123	108			519	519	30.6
BARREN CO																			
021 020 AUSTIN TRACY JHS					X				62	62	55					124	55	179	7.8
021 027 BARREN CO SR HS					X						303	242	224			769	769	34.0	
021 090 HISEVILLE JHS					X				91	79	83				170	83	253	10.9	
021 140 PARK CITY JHS					X				81	95	81				176	81	257	11.4	
021 190 TEMPLE HILL JHS					X				86	81	84				167	84	251	11.9	
CAVERNA IND																			
113 030 CAVERNA HS					X				76	92	104	84	84	59	12	168	331	511	26.8
GLASGOW IND																			
197 030 GLASGOW HS					X						222	231	174	146			773	773	36.7
BATH CO																			
025 040 BATH CO HS					X				109	92	194	155	132	126		201	607	808	38.8
BELL CO																			
031 040 BELL CO HS					X						250	242	190	184	68		866	934	46.5
031 260 LONE JACK HS					X						104	65	53	36	21	258	279	19.5	
MIDDLESBORO IND																			
426 080 MIDDLESBORO HS					X						256	225	207	172			860	860	41.4
PINEVILLE IND																			
493 020 PINEVILLE HS					X				51	49	33	36	34	28		100	131	231	17.5
BOONE CO																			
035 030 BOONE CO HS					X						161	432	362	346			1301	1301	63.4
035 043 CONNER JHS					X				293	321	285	297	260	222	35	614	285	934	45.0
035 045 CONNER SR HS					X												779	779	41.7
035 065 CCKERMAN JHS					X				455	456	249					911	249	1160	49.4
WALTON VERONA IND																			
567 020 WALTON VERONA HS							X		84	79	70	75	72	50		163	267	430	27.1
BOURBON CO																			
041 110 BOURBON CO HS					X						243	202	210	167	60		822	882	46.0

KENTUCKY HIGH SCHOOLS 1976*77

--RATINGS-- ----- ENROLLMENT BY GRADES -----

	E M G	S R A	P R O	B A S	S T A	C T O M	C A P	ENROLLMENT BY GRADES						SPEC ED	TOTAL 7-8	TOTAL 9-12	GRAND TOTAL	TOTAL STAFF	
								7	8	9	10	11	12						
BOURBON CO, PRIVATE 041 415 MILLERSBURG MIL INST HS					X					19	13	14	13			59	59	8.7	
PARIS IND 478 020 PARIS HS						X				105	104	75	95			379	379	23.2	
BOYD CO 045 010 BOYD CO SR HS						X						433	352	306	6		1091	1097	50.1
045 025 CATLETTSBURG JHS							X		160	141	143					301	143	444	21.7
045 035 SUMMIT JHS					X			293	282	260						575	260	835	35.5
ASHLAND IND 012 050 COLES JHS					X				188	211	228					399	228	627	34.5
012 010 PAUL G BLAZER SR HS						X						461	370	388			1219	1219	64.0
012 120 PUTNAM JHS					X			193	192	189						385	189	574	29.5
ASHLAND IND, PRIVATE 012 420 HOLY FAMILY HS						X					29	29	31	22			111	111	11.0
FAIRVIEW IND 162 020 FAIRVIEW HS					X				89	98	89	81	88	100		187	358	545	25.3
BOYLE CO 051 005 BOYLE CO HS						X					214	199	177	167			757	757	37.1
DANVILLE IND 143 030 DANVILLE HS						X					198	216	196	170			780	780	45.6
DANVILLE IND, STATE 143 395 KY SCH FOR DEAF HS			X								22	27	44	46			139	139	33.5
BRACKEN CO 055 010 BRACKEN CO HS					X						111	116	99	82			408	408	20.9
AUGUSTA IND 013 020 AUGUSTA HS					X				25	21	30	37	31	28		46	126	172	12.5
BREATHITT CO 061 060 BREATHITT CO HS					X						290	246	205	199			940	940	44.0
BREATHITT CO, PRIVATE 061 730 MT CARMEL HS					X					18	35	43	37	27		18	142	160	8.4
061 750 OAKDALE CHRISTIAN HS					X						7	13	8	12			40	40	7.9
061 770 RIVERSIDE CHRISTIAN TRG HS					X						8	15	12	4			39	39	6.8
JACKSON IND 272 020 JACKSON HS					X				23	37	37	31	30	19		60	117	177	10.4
BRECKINRIDGE CO 065 010 BRECKINRIDGE CO HS						X					335	272	210	201			1018	1018	50.0

KENTUCKY HIGH SCHOOLS 1976*77

--RATINGS--

----- ENROLLMENT BY GRADES -----

	E M G	S R A	P R A C O S	B R A T O A	S T A M P	C T O A P	ENROLLMENT BY GRADES						SPEC ED	TOTAL 7-8	TOTAL 9-12	GRAND TOTAL	TOTAL STAFF	
							7	8	9	10	11	12						
BRECKINRIDGE CO, PRIVATE 065 440 ST ROMUALD HS				X					24	27	26	33			110	110	7.0	
CLOVERPORT IND 132 010 FREDERICK FRAIZE HS					X			33	44	33	24	30	26		77	113	190	10.2
BULLITT CO 071 015 BULLITT CENTRAL SR HS						X				630	461	582	29			1673	1702	75.2
071 025 HEBRON JHS				X				352	319	303			31	671	303	1005	43.1	
071 060 MT WASHINGTON JHS				X				149	161	130				310	130	440	17.7	
071 075 NORTH BULLITT HS		X								265	206		6		471	477	24.0	
071 110 SHEPHERDSVILLE JHS				X				250	339	455				589	455	1044	45.0	
BUTLER CO 075 030 BUTLER CO HS				X						215	211	179	134			739	739	36.0
CALDWELL CO 081 010 CALDWELL CO SR HS				X						265	165	177	9			607	616	34.9
081 020 CALDWELL CO JHS				X				244	209	189			15	453	189	657	35.4	
CALLOWAY CO 085 020 CALLOWAY CO HS				X						235	246	233	207			921	921	39.7
MURRAY IND 446 050 MURRAY HS					X					168	174	170	179	11		691	702	37.2
CAMPBELL CO 091 020 CAMPBELL CO HS				X						522	509	387	362			1780	1780	83.4
CAMPBELL CO, PRIVATE 091 405 BISHOP BROSSART HS				X						85	91	103	100			379	379	20.5
BELLEVUE IND 032 010 BELLEVUE HS						X		92	82	117	146	119	106	17	174	488	679	35.7
DAYTON IND 147 010 DAYTON HS				X				160	125	143	126	95	109	11	285	473	769	38.7
FT THOMAS IND 176 010 HIGHLANDS HS					X			211	214	254	259	255	247		425	1015	1440	73.5
FT THOMAS IND, PRIVATE 176 420 OUR LADY OF THE HIGHLANDS HS				X						26	13	2	4			45	45	6.9
NEWPORT IND 452 068 NEWPORT ALTERNATE HS		X								47	43	13	14			117	117	5.0
452 070 NEWPORT HS					X					421	287	253	181			1142	1142	66.7
NEWPORT IND, PRIVATE 452 540 NEWPORT CATHOLIC HS					X					106	110	114	93			423	423	24.2

KENTUCKY HIGH SCHOOLS 1976*77

--RATINGS-- ----- ENROLLMENT BY GRADES -----

	E M G	S R A	P R O	B A S	S T A	C A M	S T A M P	C O A P	ENROLLMENT BY GRADES						SPEC ED	TOTAL 7-8	TOTAL 9-12	GRAND TOTAL TOTAL	TOTAL STAFF
									7	8	9	10	11	12					
NEWPORT IND, PRIVATE 452 510 OUR LADY OF PROVIDENCE ACAD HS						X						87	81	87	84		339	339	24.4
SILVER GROVE IND 533 020 SILVER GROVE HS						X			37	32	34	31	30	33	15	69	128	212	14.3
CARLISLE CO 095 040 CARLISLE CO HS						X					102	101	90	82		375	375	21.9	
CARROLL CO 101 018 CARROLL CO HS							X				177	149	140	123		589	589	30.7	
CARTER CO 105 120 EAST CARTER CO HS 105 500 WEST CARTER CO HS						X	X				265	232	172	156		825	825	35.8	
						X					219	182	157	127		685	685	32.5	
CASEY CO 111 045 CASEY CO HS						X					258	263	192	178		891	891	36.0	
CHRISTIAN CO 115 030 CHRISTIAN CO HS 115 050 HOPKINSVILLE HS						X	X				536	492	367	370		1765	1765	82.4	
						X					399	370	339	279	41	1387	1428	66.6	
CHRISTIAN CO, FEDERAL 115 290 FORT CAMPBELL SR HS 115 120 FORT CAMPBELL JHS						X	X		241	222	189	168	120	106		463	394	394	29.5
						X										189	652	40.2	
CHRISTIAN CO, PRIVATE 115 310 UNIVERSITY HEIGHTS ACAD HS								X	23	16	19	6	6			39	31	70	7.0
CLARK CO 121 030 GEO ROGERS CLARK HS							X				540	482	371	352	39	1745	1784	80.4	
CLAY CO 125 100 CLAY CO HS						X					399	349	257	231		1236	1236	56.9	
CLAY CO, PRIVATE 125 910 ONEIDA BAPTIST INSTITUTE HS						X			24	26	83	81	71	42		50	277	327	18.0
CLINTON CO 131 050 CLINTON CO HS						X			154	156	186	129	130	108	8	310	553	871	39.2
CRITTENDEN CO 135 020 CRITTENDEN CO HS						X					129	168	161	118		576	576	28.1	
CUMBERLAND CO 141 080 CUMBERLAND CO HS						X					115	98	96	84		393	393	22.2	
DAVISS CO 145 005 APOLLO HS							X				446	454	397	334		1631	1631	79.4	

22

KENTUCKY HIGH SCHOOLS 1976*77

--RATINGS-- ----- ENROLLMENT BY GRADES -----

	E M G	S R O	P A S	B T A	S T A	C O M P	C A P	7	8	9	10	11	12	SPEC ED	TOTAL 7-8	TOTAL 9-12	GRAND TOTAL	TOTAL STAFF
DAVIESS CO 145 010 DAVIESS CO HS						X				389	435	383	305	64		1512	1576	76.1
DAVIESS CO, PRIVATE 145 420 MT ST JOSEPH ACAD HS 145 555 TRINITY HS				X						15 91	21 96	19 73	26 74			81 334	81 334	13.0 16.0
OWENSBORO IND 472 110 OWENSBORO HIGH SCHOOL						X				608	548	508	456			2120	2120	116.2
OWENSBORO IND, PRIVATE 472 430 OWENSBORO CATHOLIC HS				X						236	233	217	229			915	915	44.0
EDMONSON CO 151 050 EDMONSON CO HS						X				215	170	146	131			662	662	31.5
ELLIOTT CO 155 260 ELLIOTT CO HS				X						112	102	71	85			370	370	18.8
ESTILL CO 161 090 ESTILL CO HS						X				307	236	188	160	12		891	903	48.3
FAYETTE CO 165 015 BEAUMONT JHS 165 170 BRYAN STATION SR HS 165 030 BRYAN STATION JHS 165 025 CRAWFORD JHS 165 039 HENRY CLAY SR HS 165 225 JESSIE M CLARK JHS 165 060 LAFAYETTE SR HS 165 065 LEESTOWN JHS 165 067 LEXINGTON JHS 165 076 MORTON JHS 165 525 SOUTHERN JHS 165 105 TATES CREEK SR HS 165 100 TATES CREEK JHS 165 245 WINBURN JHS				X	X			258	270	250	651	657	493	43 38 29	528 563 630	250 1801 237 829 292 1937 289 1897	821 1839 829 922 1988 901 1992	46.1 89.3 46.1 52.8 94.5 46.4 93.9 45.7 45.2 47.6 50.3 91.1 49.1 53.0
FAYETTE CO, PRIVATE 165 560 LEXINGTON CATHOLIC HS 165 014 BLUE GRASS BAPTIST HS 165 655 NEW COVENANT ACAD HS 165 569 SAYRE HS 165 580 THE LEXINGTON SCHOOL JHS			X					22	31	127	130	105	109		53	471	471	27.5
FLEMING CO 171 035 FLEMING CO HS			X					5	5	1	2	4	1		10	8	18	5.0
FLOYD CO 175 025 ALLEN CENTRAL HS				X				35	47	47	45	32	43		82	167	249	1.6
								37	36	37					73	37	110	27.0
										232	193	153	159			737	737	38.5
						X				160	154	135	126			575	575	31.4

KENTUCKY HIGH SCHOOLS 1976*77

--RATINGS-- ----- ENROLLMENT BY GRADES -----

	E M G	S R A	P R O	B A T	S A M	C O M	C A P	ENROLLMENT BY GRADES						SPEC ED	TOTAL 7-8	TOTAL 9-12	GRAND TOTAL	TOTAL STAFF
								7	8	9	10	11	12					
FLOYD CO																		
175 110 BETSY LAYNE HS							X				163	167	116	102		548	548	28.8
175 650 MCDOWELL HS							X			80	85	88	75		328	328	17.5	
175 850 PRESTONSBURG HS							X			243	236	196	170		845	845	39.2	
175 996 WHEELWRIGHT HS							X			106	72	70	61		309	309	16.5	
FRANKLIN CO																		
181 015 BONDURANT JHS							X											
181 030 ELKHORN JHS							X											
181 040 FRANKLIN CO SR HS						X												
								227	272	208					499	208	707	37.2
								368	321	295					689	295	984	46.2
										540	472	401			1413	1413	76.3	
FRANKLIN CO, PRIVATE																		
181 110 TABERNACLE CHRISTIAN HS	X									2	3		1			6	6	2.2
FRANKFORT IND																		
177 070 FRANKFORT HIGH SCHOOL					X					111	99	98	77		385	385	21.3	
FRANKFORT IND, PRIVATE																		
177 425 GOOD SHEPHERD JHS			X					27	26	19					53	19	72	5.5
FULTON CO																		
185 030 FULTON CO HS					X					141	91	68	67		367	367	20.5	
FULTON IND																		
186 020 FULTON CITY HS					X					67	43	40	52		202	202	12.4	
GALLATIN CO																		
191 020 GALLATIN CO HS					X					94	92	76	57		319	319	19.5	
GARRARD CO																		
195 060 GARRARD CO HS					X					199	162	116	131		608	608	32.1	
GRANT CO																		
201 040 GRANT CO HS						X				210	172	161	126	12	669	681	32.4	
WILLIAMSTOWN IND																		
593 020 WILLIAMSTOWN HS					X			48	50	24	46	31	38		98	139	237	13.9
GRAVES CO																		
205 020 CUBA HS					X			37	20	29	16	16	11		57	72	129	10.0
205 050 FANCY FARM HS					X					44	29	49	26		148	148	9.5	
205 070 FARMINGTON HS					X			39	36	47	42	33	20		75	142	217	9.7
205 120 LOWES HS						X				70	71	57	57		255	255	14.0	
205 160 SEDALIA HS					X					48	54	37	41		180	180	10.4	
205 180 SYMSONIA HS					X					86	71	67	52		276	276	14.3	
205 210 WINGO HS					X					72	79	66	53		270	270	13.1	
GRAVES CO, PRIVATE																		
205 225 CHAS L SHEDD APSL RES ACAD HS	X							5	3	4	10	1	1		8	16	24	3.0
MAYFIELD IND																		
392 060 MAYFIELD HS						X				187	204	170	143	30	704	734	42.7	

KENTUCKY HIGH SCHOOLS 1976*77

--RATINGS-- ----- ENROLLMENT BY GRADES -----

	E M G	S A G	P R O	B R S	I T A	S T A	C O A M	C O A P	ENROLLMENT BY GRADES							TOTAL 7-8	TOTAL 9-12	GRAND TOTAL	TOTAL STAFF	
									7	8	9	10	11	12	SPEC ED					
GRAYSON CO 211 065 GRAYSON CO HS							X					411	328	274	244			1257	1257	58.8
GREEN CO 215 065 GREEN CO HS						X					204	153	159	152			668	668	36.5	
GREENUP CO 221 027 GREENUP CO SP HS							X				431	349	317	274			1371	1371	55.3	
RACELAND IND 502 020 RACELAND HS						X			78	75	81	57	75	76		153	289	442	26.2	
RUSSELL IND 522 050 RUSSELL HS							X				318	278	274	258			1128	1128	51.4	
HANCOCK CO 225 005 HANCOCK CO HS							X				154	141	127	108			530	530	28.4	
HARDIN CO 231 005 EAST HARDIN HS							X					84	267	214	185		750	750	41.8	
231 190 HARDIN CENTRAL JHS						X			267	249	301					516	301	817	41.1	
231 077 JAMES T ALTON JHS						X			108	128	475					236	475	711	36.6	
231 075 NORTH HARDIN SR HS						X					455	439	421				1315	1315	65.1	
231 168 WEST HARDIN HS						X					83	223	190	165			661	661	33.5	
HARDIN CO, FEDERAL 231 260 FORT KNOX HS							X				265	247	159	128			799	799	46.8	
ELIZABETHTOWN IND 152 010 ELIZABETHTOWN SR HS						X						282	234	210			726	726	36.7	
152 035 TALTON K STONE JHS						X			206	229	232					435	232	667	33.5	
HARLAN CO 235 190 CUMBERLAND HS						X					131	123	111	119	18		484	502	32.0	
235 260 EVARTS HS						X					167	140	85	91	30		483	513	29.7	
235 385 JAMES A CAWOOD HS						X					303	249	250	218	23		1020	1043	58.0	
HARLAN IND 236 030 HARLAN HS						X			98	111	121	76	74	79		209	350	559	31.0	
LYNCH IND 356 020 LYNCH HS						X				24	31	33	30	27		24	121	145	13.8	
LYNCH IND, PRIVATE 356 120 LYNCH CHRISTIAN ACAD JHS		X							3	4	7					7	7	14	1.0	
HARRISON CO 241 040 HARRISON CO HS							X				257	235	233	193	54		918	972	55.4	
HART CO 245 045 HART CO HS							X				239	204	194	125			762	762	42.8	

KENTUCKY HIGH SCHOOLS 1976*77

--RATINGS-- ----- ENROLLMENT BY GRADES -----

	E M S G	S R A O	P R A S	B I S T A M	C T O M P	ENROLLMENT BY GRADES						SPE C I A L	TOTAL 7-8	TOTAL 9-12	GRAND TOTAL	TOTAL STAFF
						7	8	9	10	11	12					
HENDERSON CO 251 060 HENDERSON CO SR HS 251 150 HENDERSON CITY NINTH GR CTR					X X			888	712	687	561			1960 888	1960 888	84.9 42.7
HENRY CO 255 035 HENRY CO HS					X			191	163	158	143			655	655	30.0
EMINENCE IND 156 010 EMINENCE HS				X		47	40	51	40	45	33		87	169	256	14.5
HICKMAN CO 261 050 HICKMAN CO HS				X				131	114	88	77			410	410	21.5
HOPKINS CO 265 145 MADISONVILLE N HOPKINS SR HS 265 140 MADISONVILLE JHS 265 220 SOUTH HOPKINS HS 265 255 WEST HOPKINS HS					X	185	274	389 177 140	362 159 123	355 121 118	292 104 89	20 14 29 13	459	1009 389 561 470	1029 862 590 483	59.5 49.0 31.6 28.7
HOPKINS CO, PRIVATE 265 310 MADISONVILLE CHRISTIAN SCH HS	X					28	18	17	24	14	9		46	64	110	5.7
DAWSON SPRINGS IND 146 020 DAWSON SPRINGS HS				X		54	52	59	57	42	41		106	199	305	16.3
JACKSON CO 271 020 JACKSON CO HS				X				191	174	138	109			612	612	33.6
JACKSON CO, PRIVATE 271 720 ANNVILLE INSTITUTE HS				X				14	10	9	11			44	44	10.8
JEFFERSON CO 275 175 AHRENS HS 275 018 ATHERTON HS 275 105 BALLARD HS 275 267 BROWN H S 275 045 BUTLER HS 275 179 CENTRAL HS 275 100 DOSS HS 275 200 DUPONT MANUAL HS 275 047 DURRETT HS 275 007 EASTERN HS 275 230 EBERSON TEENAGE PARENT HS 275 057 FAIRDALE HS 275 012 FERN CREEK HS 275 335 IROQUOIS HS 275 090 JEFFERSON HS 275 396 JEFFERSON CO TRADITIONAL HS 275 065 JEFFERSONTOWN HS		X		X X X X X X X X X X X X X X X X X X X	X X X X X X X X X X X X X X X X X X	102	124	555 406 437 49 557 458 392 886 215 100 3 301 348 704 461 125 254	417 369 397 75 418 396 299 578 427 333 2 458 308 588 357 92 131 256	309 397 443 71 431 444 344 499 361 360 23 340 374 588 499 357 59 31 397	187 324 391 34 331 351 308 382 283 286 32 256 275 439 248 248 31 367	62 14 61 40 77 5 75 20 75 66	226 333 440 410 205 5 569 656 1424 256 510	1668 1496 1608 229 1737 1649 1345 2345 1328 1328 107 1371 1461 2230 1424 182 1697	1468 1558 1908 229 2131 1649 1783 2385 1533 1533 112 2015 2137 2230 1499 438 2273	71.7 74.5 94.9 18.4 100.5 85.5 90.0 118.0 98.0 81.0 10.0 104.5 106.0 106.6 79.0 24.8 117.0

KENTUCKY HIGH SCHOOLS 1976*77

--RATINGS-- ----- ENROLLMENT BY GRADES -----

	E M G	S R A	P R O	B A S	S A M	C O A P	ENROLLMENT BY GRADES						SPEC ED	TOTAL 7-8	TOTAL 9-12	GRAND TOTAL TOTAL STAFF		
							7	8	9	10	11	12						
JEFFERSON CO																		
275 368 LONGFELLOW ALT HS	X								17	13	2	2			34	34	12.0	
275 410 MALE HS				X					429	311	260	183			1183	1183	68.0	
275 098 MOORE HS				X				339	371	498	453	393	361	18	1705	2433	112.5	
275 075 PLEASURE RIDGE PARK HS				X				322	322	488	442	404	358		644	1692	2336	112.0
275 073 SENECA HS				X					444	373	367	319			1503	1503	82.6	
275 590 SHAWNEE HS				X					336	317	295	180	29		1128	1157	61.0	
275 031 SOUTHERN HS				X				209	233	615	431	449	337		442	1832	2274	112.1
275 101 STUART HS				X				347	335	460	364	364	292	43	682	1480	2205	92.6
275 033 VALLEY HS				X				199	195	461	344	312	288	38	394	1405	1837	96.0
275 051 WAGGENER HS				X				261	267	391	368	351	313		528	1423	1951	101.6
275 084 WESTERN HS				X				146	176	566	436	457	386	15	322	1845	2182	104.0
275 077 WESTPORT ROAD HS				X				346	373	439	309	362	254		719	1364	2083	106.7
JEFFERSON CO, STATE																		
275 177 KENTUCKY SCH FOR BLIND HS	X									4	16	10	12			42	42	14.6
JEFFERSON CO, PRIVATE																		
275 385 ANGELA MERICI HS				X					186	160	170	109			625	625	33.5	
275 386 ASSUMPTION HS				X		X			181	149	152	172			654	654	39.6	
275 355 BISHOP DAVID HS				X					192	194	172	134			692	692	39.0	
275 205 DESALES HS				X					161	159	140	119			579	579	28.4	
275 235 HOLY ROSARY ACAD HS				X					105	116	89	86			396	396	23.1	
275 180 MERCY ACAD HS				X					129	96	101	79			405	483	29.7	
275 263 PRESENTATION ACAD HS				X			44	34	141	144	129	113		78	527	527	36.4	
275 283 SACRED HEART ACAD HS				X					237	242	213	179			871	871	53.9	
275 633 ST XAVIER HS				X		X			415	394	350	338			1497	1497	74.0	
275 348 TRINITY HS				X					381	330	332	317			1360	1360	65.0	
275 354 BETH HAVEN CHRISTIAN HS				X				107	81	78	80	79	59		188	296	484	23.0
275 384 EVANGEL SCH INC HS				X				83	63	97	88	64	39		146	288	434	21.6
275 379 FAITH TEMPLE SCHS INC HS				X				27	29	32	19				56	51	107	7.4
275 770 FARMDALE CHRISTIAN SCH HS				X					24						24	24	24	1.6
275 556 GETHSEMANE CHRISTIAN SCH HS				X				18	19	6	8	6			37	20	57	3.0
275 118 GREATER LOUISVL JR ACAD SDA HS				X					14	17					31	31	31	3.9
275 331 HOLY ANGELS ACAD JHS				X				14	11	7					25	7	32	2.9
275 606 NINTH 6 O CHRISTIAN HS				X				49	47	48	21	9			96	78	174	15.5
275 576 NORTHSIDE CHRISTIAN HS				X					8						8	8	8	1.1
275 253 PORTLAND CHRISTIAN HS				X				28	26	29	31	34	29		54	123	177	14.1
275 785 SHIVELY CHRISTIAN SCH HS				X				32	41	33	20	13			73	66	139	4.0
275 536 SOUTH LOUISVILLE CHRISTIAN HS				X				6	9	6	6	1	1		15	14	29	2.8
275 571 EASTWOOD EDUC CTR HS				X					13	4					17	17	17	1.5
275 388 KENTUCKY COUNTRY DAY HS				X					66	75	66	65	68		66	274	340	36.0
275 181 LOUISVILLE COLLEGIATE HS				X				24	24	29	26	17	21		48	93	141	20.0
275 736 WALDEN HS				X					38	33	38	27			136	136	136	17.4
ANCHORAGE IND																		
006 020 ANCHORAGE JHS				X				41	39	39					80	39	119	10.3
JESSAMINE CO																		
281 025 JESSAMINE CO JHS				X				425	404	379					829	379	1208	47.0

KENTUCKY HIGH SCHOOLS 1976*77

--RATINGS--

----- ENROLLMENT BY GRADES -----

	E M G	S R A	P R O	B A S	S A T	C O M	C A P	ENROLLMENT BY GRADES						SPEC ED	TOTAL 7-8	TOTAL 9-12	GRAND TOTAL	TOTAL STAFF
								7	8	9	10	11	12					
JESSAMINE CO 281 020 JESSAMINE CO SR HS						X					348	282	236	21		866	887	43.0
JOHNSON CO 285 115 JOHNSON CENTRAL HS						X				383	316	256	242			1197	1197	65.2
PAINTSVILLE IND 477 020 PAINTSVILLE HS					X			103	66	85	76	71	70		169	302	471	27.5
KENTON CO 291 040 DIXIE HEIGHTS SR HS						X					396	455	364			1215	1215	58.8
291 090 SIMON KENTON HS						X				105	432	393	308			1238	1238	58.4
291 103 TURKEY FOOT HS		X							420	480	113				420	593	1013	54.0
291 105 TWENHOFEL JHS					X			328	469	360				25	797	360	1182	55.6
KENTON CO, PRIVATE 291 415 COVINGTON CATHOLIC HS						X				145	149	126	136			556	556	30.5
291 610 NOTRE DAME ACAD HS						X				179	198	150	134			661	661	41.6
291 490 VILLA MADONNA ACAD HS						X				38	56	66	76			236	236	20.2
BEECHWOOD IND 026 020 BEECHWOOD HS					X			68	60	84	85	84	77		128	330	458	22.5
COVINGTON IND 134 080 HOLMES HS						X				592	582	563	442	394	592	1981	2573	143.7
COVINGTON IND, PRIVATE 134 530 COVINGTON LATIN HS				X						65	64	49	56			234	234	16.2
134 560 HOLY CROSS HS				X				40	54	84	84	97	89		94	354	448	23.3
134 580 LASALETTE ACAD HS				X						35	43	36	66			180	180	15.3
134 220 CALVARY CHRISTIAN SCH HS		X								40	26					66	66	3.6
ERLANGER IND 157 030 LLOYD HS						X				238	243	220	203	43		904	947	55.1
ERLANGER IND, PRIVATE 157 420 ST HENRY HS					X					88	93	85	97			363	363	19.9
LUDLOW IND 354 020 LUDLOW HS					X			88	97	105	106	85	83		185	379	564	28.0
KNOTT CO 295 140 CORDIA HS		X								25	18	25	18			86	86	5.2
295 265 KNOTT CO CENTRAL HS					X					300	278	226	176			980	980	44.9
KNOX CO 301 410 KNOX CENTRAL HS						X				452	303	222	195			1172	1172	54.7
301 450 LYNN CAMP HS					X					104	97	85	70			356	356	17.3
BARBOURVILLE IND 016 020 BARBOURVILLE HS					X			48	44	44	37	37	33		92	151	243	13.0

KENTUCKY HIGH SCHOOLS 1976*77

--RATINGS-- ----- ENROLLMENT BY GRADES -----

	E M G	S R A	P R O	B R A T S	S T A	C O M P	7	8	9	10	11	12	SPEC ED	TOTAL 7-8	TOTAL 9-12	GRAND TOTAL	TOTAL STAFF
LARUE CO 305 040 LARUE CO HS						X			222	230	214	184			850	850	41.8
LAUREL CO 311 035 BUSH JHS				X			139	112	118					251	118	369	16.7
311 135 HAZEL GREEN JHS				X			133	99	106					232	106	354	17.3
311 210 LAUREL CO SR HS					X				570	504	365	16		1439	1439	70.0	
311 225 LILY JHS				X			190	210	200					400	200	600	22.5
311 230 LONDON JHS					X		242	244	226				13	486	226	725	31.0
LAUREL CO, PRIVATE 311 520 LONDON CHRISTIAN ACAD JHS		X							4	3	1				8	8	2.0
LAWRENCE CO 315 260 LOUISA HS					X				227	221	149	148	36		745	781	42.9
LEE CO 321 050 LEE CO HS						X			154	150	124	119			547	547	25.8
LESLIE CO 325 350 LESLIE CO HS					X				254	251	206	183			894	894	37.0
325 580 RED BIRD HS					X				48	42	34	21			145	145	13.2
LETCHER CO 331 240 FLEMING NEON HS					X				131	106	71	80			388	388	18.4
331 360 LETCHER HS					X				100	82	61	60			303	303	16.8
331 720 WHITESBURG HS					X				268	204	126	168			766	766	38.6
JENKINS IND 276 050 JENKINS HS					X				99	72	68	63			302	302	13.7
LEWIS CO 335 120 LEWIS CO HS					X				199	209	144	120			672	672	32.0
335 145 TOLLESBORO HS					X		72	76	79	56	53	39		148	227	375	18.1
LINCOLN CO 341 095 LINCOLN CO HS						X			332	286	255	212	14		1085	1099	63.7
LIVINGSTON CO 345 050 LIVINGSTON CENTRAL HS					X				149	143	139	134			565	565	28.2
LOGAN CO 351 020 ADAIRVILLE HS				X					60	43	37	37			177	177	11.6
351 050 AUBURN HS				X					73	58	47	57			235	235	14.2
351 080 CHANDLERS HS				X					40	39	42	22			143	143	8.3
351 110 LEWISBURG HS					X				83	72	60	57			272	272	14.3
351 130 OLMSTEAD HS					X				44	47	39	55			185	185	11.8
RUSSELLVILLE IND 523 030 RUSSELLVILLE HS						X			168	150	142	105			565	565	28.0

KENTUCKY HIGH SCHOOLS 1976*77

--RATINGS-- ENROLLMENT BY GRADES -----

	E M G	S R A	P R A T S	B A T A	S A M	C G H	C A P	ENROLLMENT BY GRADES						SPEC ED	TOTAL 7-8	TOTAL 9-12	GRAND TOTAL TOTAL	TOTAL STAFF	
								7	8	9	10	11	12						
LYON CO 361 070 LYON CO HS					X											332	332	18.8	
MADISON CO 365 050 MADISON CENTRAL HS						X										1601	1601	71.2	
MADISON CO, STATE 365 460 MODEL LABORATORY HS					X											243	243	18.5	
BEREA IND 034 020 BEREAS COMM HS					X											185	414	599	37.2
RICHMOND IND 504 040 MADISON HS					X											302	302	18.3	
MAGOFFIN CO 371 370 MAGOFFIN CO H S					X											730	730	39.4	
MARION CO 375 220 LEBANON JHS					X											408	205	630	30.3
375 515 MARION CO SR HS					X	X										327	167	505	25.8
375 090 ST CHARLES JHS					X											327	167	505	25.8
MARSHALL CO 381 015 BENTON JHS							X									213	88	301	16.2
381 088 MARSHALL CO SR HS							X									417	177	614	27.4
381 090 NORTH MARSHALL JHS							X									290	111	401	19.6
381 110 SOUTH MARSHALL JHS							X									290	111	401	19.6
MARTIN CO 385 250 SHELDON CLARK HS					X											813	813	40.7	
MASON CO 391 030 MASON CO HS						X										772	772	40.3	
MAYSVILLE IND 393 050 MAYSVILLE HS						X										336	336	21.7	
MAYSVILLE IND, PRIVATE 393 420 ST PATRICK HS					X											85	85	8.0	
MCCRACKEN CO 395 050 HEATH HS							X									649	649	33.0	
395 070 LONE OAK HS							X									855	855	44.4	
395 110 REIDLAND HS							X									765	765	36.2	
MCCRACKEN CO, PRIVATE 395 130 SOUTHLAND CHRISTIAN HS					X											14	19	33	2.5
PADUCAH IND 476 010 BRAZELTON JHS					X											398	216	644	38.5

KENTUCKY HIGH SCHOOLS 1976*77

--RATINGS-- ----- ENROLLMENT BY GRADES -----

	E M G	S R A	P R O	L A S	D I S	S A M	C O A P	ENROLLMENT BY GRADES						SPE C I A L	TOTAL 7-8	TOTAL 9-12	GRAND TOTAL TOTAL	STAFF		
								7	8	9	10	11	12							
PADUCAH IND																				
476 100 JETTON JHS						X		168	143	167							311	167	547	38.9
476 170 PADUCAH TILGHMAN SR HS							X			406	351	365	47					1122	1169	65.8
PADUCAH IND, PRIVATE																				
476 530 ST MARY HS						X				86	74	70	57					287	287	22.5
MCCREARY CO																				
401 150 MCCREARY CO HS						X														
401 220 PINE KNOT HS						X		100	84	106	67	57	50	9			184	280	464	35.1
401 220 PINE KNOT HS																				25.0
MCLEAN CO																				
405 065 MCLEAN CO HS							X			201	170	165	157	11				693	704	35.5
MEADE CO																				
411 070 MEADE CO HS							X			341	335	334	277					1287	1287	49.5
MENIFEE CO																				
415 090 MENIFEE CO HS						X				86	77	62	48	17				273	290	18.4
MERCER CO																				
421 030 MERCER CO HS						X		179	195	197	178	134	124	12			374	633	1019	45.2
BURGIN IND																				
072 010 BURGIN HS						X		53	44	42	43	43	37				97	165	262	15.6
HARRODSBURG IND																				
242 020 HARRODSBURG HS						X				123	90	92	78					383	383	20.2
METCALFE CO																				
425 050 METCALFE CO HS						X				165	157	149	127					598	598	28.5
MONROE CO																				
431 160 GAMALIEL HS						X		46	61	77	67	58	63				107	265	372	24.0
431 450 TOMPKINSVILLE HS						X		183	137	162	143	130	136				320	571	891	40.8
MONTGOMERY CO																				
435 040 MONTGOMERY CO HS						X			362	341	286	262	212				362	1101	1463	78.0
MORGAN CO																				
441 150 MORGAN CO HS						X				187	181	167	134					669	669	32.5
MUHLENBERG CO																				
445 020 BREMEN HS						X				92	75	75	55					297	297	14.4
445 060 DRAKESBORO CONSOLIDATED HS						X				67	59	49	45					220	220	12.0
445 090 GRAHAM HS						X				37	38	30	30					135	135	9.4
445 110 HUGHES KIRK HS						X				108	69	71	64					312	312	13.1
445 150 MUHLENBERG CENTRAL HS						X		168	126	153	128	110	97				294	488	782	35.3
CENTRAL CITY IND																				
114 030 CENTRAL CITY HS						X		87	92	89	63	67	61	11			179	280	470	22.0

KENTUCKY HIGH SCHOOLS 1976*77

--RATINGS--

----- ENROLLMENT BY GRADES -----

	E M G	S R A	P R A T I O N	B S T R A T I O N	S T A M P	C O A P	ENROLLMENT BY GRADES						SPEC ED	TOTAL 7-8	TOTAL 9-12	GRAND TOTAL	TOTAL STAFF		
							7	8	9	10	11	12							
GREENVILLE IND 223 030 GREENVILLE HS					X			73	89	71	76	73	75		162	295	457	22.5	
NELSON CO 451 020 BLOOMFIELD JHS					X			57	76	71					133	71	204	11.4	
451 100 NELSON CO SR HS					X	X					411	392	356			1159	1159	53.5	
451 110 NEW HAVEN JHS					X			101	105	96					206	96	302	15.3	
451 090 OLD KENTUCKY HOME JHS					X			235	268	256					503	256	759	33.4	
BARDSTOWN IND 017 020 BARDSTOWN HS					X					141	134	155	121			551	551	35.9	
BARDSTOWN IND, PRIVATE 017 410 BETHLEHEM HS					X					80	83	91	78			332	332	21.0	
NICHOLAS CO 455 030 NICHOLAS CO HS					X					134	142	95	76			447	447	21.0	
OHIO CO 461 100 FORDSVILLE HS					X					56	55	50	52			213	213	12.6	
461 155 OHIO CO HS					X	X		372	342	268	268	230			1212	1212	52.5		
OLDHAM CO 465 060 OLDHAM CO HS					X					424	416	320	285			1446	1446	68.2	
OLDHAM CO, PRIVATE 465 430 PEWEE VALLEY JR ACAD JHS					X	X		8	2	7					10	7	17	2.4	
465 236 ST FRANCIS JHS					X			36	34	29					70	29	99	17.3	
OWEN CO 471 080 OWEN CO HS					X			177	152	146	131	135	89		329	501	830	42.0	
OWSLEY CO 475 060 OWSLEY CO HS					X			110	100	97	81	60	52		210	290	500	26.0	
PENDLETON CO 481 070 PENDLETON CO HS					X					224	210	200	164			798	798	38.7	
PERRY CO 485 130 BUCKHORN HS					X			20	28	67	58	40	39			48	204	252	14.1
485 190 D C COMBS MEMORIAL HS					X					174	156	122	86			538	538	26.2	
485 590 M C NAPIER HS					X					228	234	168	147			777	777	36.6	
HAZARD IND 246 010 HAZARD HS					X					118	84	96	94	28		392	420	23.1	
PIKE CO 491 090 BELFRY HS					X					287	255	215	199			956	956	52.0	
491 260 DORTON HS					X					72	44	43	40			199	199	13.7	

KENTUCKY HIGH SCHOOLS 1976*77

--RATINGS-- ----- ENROLLMENT BY GRADES -----

	E M G	S R A	P R O	B A T A	S T A S	C O M P	C I A P	ENROLLMENT BY GRADES							SPEC ED	TOTAL 7-8	TOTAL 9-12	GRAND TOTAL TOTAL	STAFF
								7	8	9	10	11	12						
PIKE CO																			
491 310 ELKHORN CITY HS					X						145	107	113	96					
491 340 FEDS CREEK HS					X			62	78		110	93	64	69		140	336	476	30.0
491 630 JOHNS CREEK HS					X						171	154	145	108			578	578	34.5
491 890 MILLARD HS					X			119	112		158	128	116	98		231	500	731	37.3
491 940 MULLINS HS					X						89	81	69	59			298	298	21.3
491 954 PHELPS HS					X						130	91	71	75			367	367	27.0
491 976 VIRGIE HS					X			82	83		189	155	112	109		165	565	730	43.8
PIKEVILLE IND																			
492 030 PIKEVILLE HS					X			124	117		103	95	88	84		241	370	611	31.6
POWELL CO																			
495 040 POWELL CO HS					X						185	165	127	100			577	577	32.5
PULASKI CO																			
501 080 BURNSIDE HS					X			77	83		66	78	44	35		160	223	383	12.2
501 190 EUBANK HS					X			75	69		64	74	50	45		144	233	377	19.5
501 290 NANCY HS					X			73	63		78	86	54	56		136	274	410	21.0
501 380 PULASKI CO HS					X			148	154		316	292	215	202	6	302	1025	1333	59.8
501 450 SHOPVILLE HS					X			41	49		44	68	33	34		90	179	269	17.4
SOMERSET IND																			
536 070 SOMERSET HS						X					217	185	174	182			758	758	37.2
ROBERTSON CO																			
505 020 DEMING HS					X			58	48		24	45	25	41		106	135	241	13.6
ROCKCASTLE CO																			
511 310 ROCKCASTLE CO HS					X						271	222	222	177	11		892	903	44.2
ROWAN CO																			
515 180 ROWAN CO HS					X			89	84		272	203	158	166	6	173	799	978	42.7
ROWAN CO, STATE																			
515 520 UNIV BRECKINRIDGE HS					X			50	48		41	45	48	41		98	175	273	20.2
RUSSELL CO																			
521 240 RUSSELL CO HS					X						268	219	164	156			807	807	37.8
SCOTT CO																			
525 040 SCOTT CO SR HS					X						332	314	231	198	13	1075	1088	53.4	
SHELBY CO																			
531 090 SHELBY CO HS					X						478	347	349	248	40	1422	1462	69.5	
SIMPSON CO																			
535 040 FRANKLIN SIMPSON HS					X						291	265	223	200		979	979	49.9	
SPENCER CO																			
541 050 TAYLORSVILLE HS					X						103	114	87	92		396	396	18.1	

KENTUCKY HIGH SCHOOLS 1976*77

--RATINGS--

----- ENROLLMENT BY GRADES -----

	E M G	S R O	P A S	B T S	S T A	C O M	C A P	ENROLLMENT BY GRADES							SPEC ED	TOTAL 7-8	TOTAL 9-12	GRAND TOTAL	TOTAL STAFF	
								7	8	9	10	11	12							
TAYLOR CO 545 030 TAYLOR CO HS						X					228	222	216	184	18		850	868	45.5	
CAMPBELLSVILLE IND 092 020 CAMPBELLSVILLE HS					X						138	126	116	97			477	477	25.5	
TODD CO 551 095 TODD CO CENTRAL HS					X						201	172	186	156	22		715	737	34.5	
TRIGG CO 555 070 TRIGG CO HS						X					202	176	180	146			704	704	40.1	
TRIMBLE CO 561 030 TRIMBLE CO HS							X				110	103	91	69			373	373	21.5	
UNION CO 565 030 MORGANFIELD JHS					X					124	149	171				273	171	444	24.3	
565 060 STURGIS JHS					X					83	102	89				185	89	274	17.8	
565 065 UNION CO SR HS						X						306	256	225			787	787	43.3	
565 075 UNIONTOWN JHS					X					27	36	45				63	45	108	6.8	
WARREN CO 571 210 WARREN CENTRAL HS					X						482	397	359	267	14		1505	1519	69.2	
571 220 WARREN EAST HS					X						230	231	203	145	10		809	819	47.5	
BOWLING GREEN IND 042 070 BOWLING GREEN SR HS						X						393	396	360	17		1149	1166	66.8	
042 065 BOWLING GREEN JHS					X					419	430			31		419	430	880	51.9	
WASHINGTON CO 575 074 WASHINGTON CO HS					X						241	202	163	177			783	783	41.1	
WAYNE CO 581 440 WAYNE CO HS						X					214	200	182	156			752	752	35.0	
MONTICELLO IND 436 010 MONTICELLO HS					X						60	57	50	44			211	211	10.5	
WEBSTER CO 585 130 WEBSTER CO HS					X						227	190	156	119			692	692	35.8	
PROVIDENCE IND 496 020 PROVIDENCE HS					X						65	75	65	54			259	259	15.0	
WHITLEY CO 591 430 WHITLEY CO HS							X				373	316	249	158			1096	1096	50.5	
CORBIN IND 133 040 CORBIN HS						X					190	167	147	159	12		190	591	793	36.4

KENTUCKY HIGH SCHOOLS 1976*77

--RATINGS-- ----- ENROLLMENT BY GRADES -----

	M	S	P	S	C		7	8	9	10	11	12	SPEC	TOTAL	TOTAL	GRAND	TOTAL
	G	A	R	T	O								ED	7-8	9-12	TOTAL	STAFF
CORBIN IND, PRIVATE 133 320 ST CAMILLUS ACAD HS			X						18	21	10	14			63	63	7.0
WILLIAMSBURG IND 592 020 WILLIAMSBURG HS				X			66	70	69	50	50	55	13	136	224	373	21.4
WOLFE CO 595 320 WOLFE CO HS				X					139	98	103	81		421	421	25.0	
WOLFE CO, PRIVATE 595 760 HAZEL GREEN ACAD HS				X					28	29	22	20		99	99	11.2	
WOODFORD CO 601 084 WOODFORD CO HS					X				348	337	264	255	27	1204	1231	52.8	
WOODFORD CO, PRIVATE 601 460 MARGARET HALL HS			X						3	6	6	10		25	25	8.5	

TOTAL HIGH SCHOOLS 395
TOTAL ENROLLMENT 276,294

Special Education Centers 1976-1977

These programs attempt to serve specific functions and purposes for those in attendance. These centers are neither classified as serving as elementary or secondary education schools. For this reason special education centers will be named in Kentucky's Elementary and High School List and Classification Bulletins.

Special Ed Center	Grade Range	Staff Minus Principal	Pupils
Barren Co. Cave Lake Elementary	SE SE	2.0	15
Grayson Co. Grayson Co. Occupational Ctr	SE SE	3.0	21
Hardin Co. Mulberry Helm Dev Trg Ctr	SE SE	6.0	37
Dawson Springs Ind, State Excepticon-Outwood Sch	SE SE	6.0	180
Jefferson Co Churchill Park Rehab Ctr	SE SE	39.0	337
Heywood Environmental Sch El	SE SE	15.0	75
Jeffersontown Spec Educ Ctr	SE SE	14.0	104
Melbourne Hts Spec Educ Ctr	SE SE	15.0	117
Mill Creek Spec Educ Ctr	SE SE	14.0	114
Southwick El	HS SE	11.0	120
Jefferson Co, State Hazelwood Sch for Mntly Ret	SE SE	15.0	124
Jefferson Co, Private Alfred Binet Elementary	SE SE	8.0	65
Cerebral Palsy El	SE SE	14.8	112
Ky Sp Sch for Excep Child El	SE SE	4.2	40
Lou Sch for Autistic Chn El	SE SE	4.0	12
Covington Ind Job Prep Center	07 11	3.6	77
Paducah Ind Northside Special Services	KG SE	16.0	302
Pulaski Co, State Oakwood School	SE SE	24.7	232
TOTALS Total Sp Ed Centers 18 (Not Elementary or Secondary)		215.3	2,084

EXCEPTION LIST OF ALL SCHOOLS NOT LISTED BY SD110R OR SD120R FOR 1976*77
 PN-SD123R PAGE 3 RUN DATE 06/07/77

EDUCATIONAL ARRANGEMENTS	ACCRED	GRADE RANGE	TOTAL STAFF	MINUS PRINCIPAL	PUPILS	
JEFFERSON CO, PRIVATE						
275 459 NORTON BURN UNIT EL	6	SE SE	1.0	1.0	11	DR HARRY STANBAUGH
275 466 UNITED CEREBRAL PALSY SCH EL	6	SE SE	4.0	4.0	39	JOHN W LYNCH
KENTON CO						
291 055 NORTHERN KY RECPT CTR EL	6	UG UG	2.0	2.0	24	JEAN P BRANUM
MORGAN CO						
441 230 WOODSBEND BOYS CAMP HS	6	UG UG	4.0	4.0	50	EMANUEL HAMPTON
ROWAN CO						
515 130 MOREHEAD TREATMENT CENTER	6	UG UG	5.0	5.0	44	KENNETH E BLAND
WAYNE CO						
581 170 LAKE CUMBERLAND BOYS CAMP	6	UG UG	4.0	4.0	44	HOBERT BRANSCUM

EXCEPTION LIST OF ALL SCHOOLS NOT LISTED BY SD110R OR SD120R FOR 1976*77
 PN-SD123R PAGE 2 RUN DATE 06/07/77

EDUCATIONAL ARRANGEMENTS	ACCRED	GRADE RANGE	TOTAL STAFF	MINUS PRINCIPAL	PUPILS	
BUTLER CO						
075 110 GREEN RIVER BOYS CAMP	6	UG UG	4.0	4.0	63	BILLIE C CLARK
OWENSBORO IND						
472 300 PROJECT CHOICE ALT CTR HS	6	07 12	5.2	4.2	30	VIRGIL H SUBLETT
FAYETTE CO						
165 018 BLUEGRASS SCH FOR TRAINABLES	6	SE SE	20.0	19.0	106	JOCK D GUM
FAYETTE CO, PRIVATE						
165 122 DAY TREATMENT CENTER	6	07 09	9.5	8.5	50	GLEN C KIRK
JEFFERSON CO						
275 08 CENTRAL KY TREATMENT CTR	6	UG UG	5.9	5.7	41	HEWITT T WILKINSON
275 463 DIAGNOSTIC & DETENTION CTR HS	6	10 10	3.0	3.0	27	GABE SPALDING
275 125 JEWELL MANOR DAY TREATMENT CTR	6	01 07	6.4	6.2	50	HEWITT T WILKINSON
275 150 KY CHILD HOME - RESOURCE HOME	6	07 12	2.2	2.0	40	HEWITT T WILKINSON
275 138 KY CHILD HOME DAY TREATMNT CTR	6	SE SE	8.2	8.0	30	HEWITT WILKINSON
275 140 LYHWOOD TREATMENT CTR	6	UG UG	9.5	9.3	50	HEWITT T WILKINSON
275 088 ORMSBY VILLAGE HS	6	UG UG	13.0	12.0	94	ALMA M RICHARDSON
275 130 REG III RE ED EL	6	SE SE	23.0	22.0	32	DONALD R ALWES
JEFFERSON CO, STATE						
275 359 CHILDRENS TREATMENT SERVICE EL	6	SE SE	6.0	5.5	10	ANGELA T SCHELL
275 361 CHILDRENS TREATMENT SERVICE HS	6	SE SE	7.0	6.5	9	ANGELA T SCHELL
JEFFERSON CO, PRIVATE						
275 768 HOME OF THE INNOCENTS EL	6	01 08	3.0	3.0	17	ROSE HENNING
275 465 LOUISVILLE DEAF ORAL SCH EL	6	SE SE	6.5	5.5	23	KATHLEEN DANIEL
275 193 MARYHURST HS	6	UG UG	11.5	10.5	37	THOMAS J BARRETT
275 650 MEREDITH DUNN LRG DIS CTR INC	6	SE SE	2.0	1.5	15	SHIRLEY K MEREDITH
275 458 NORTON BEHAVIORAL DIS EL	6	SE SE	1.5	1.5	12	DR JAMES MCNEELY

UNIVERSITY OF KENTUCKY

3 0425 1026006 T

