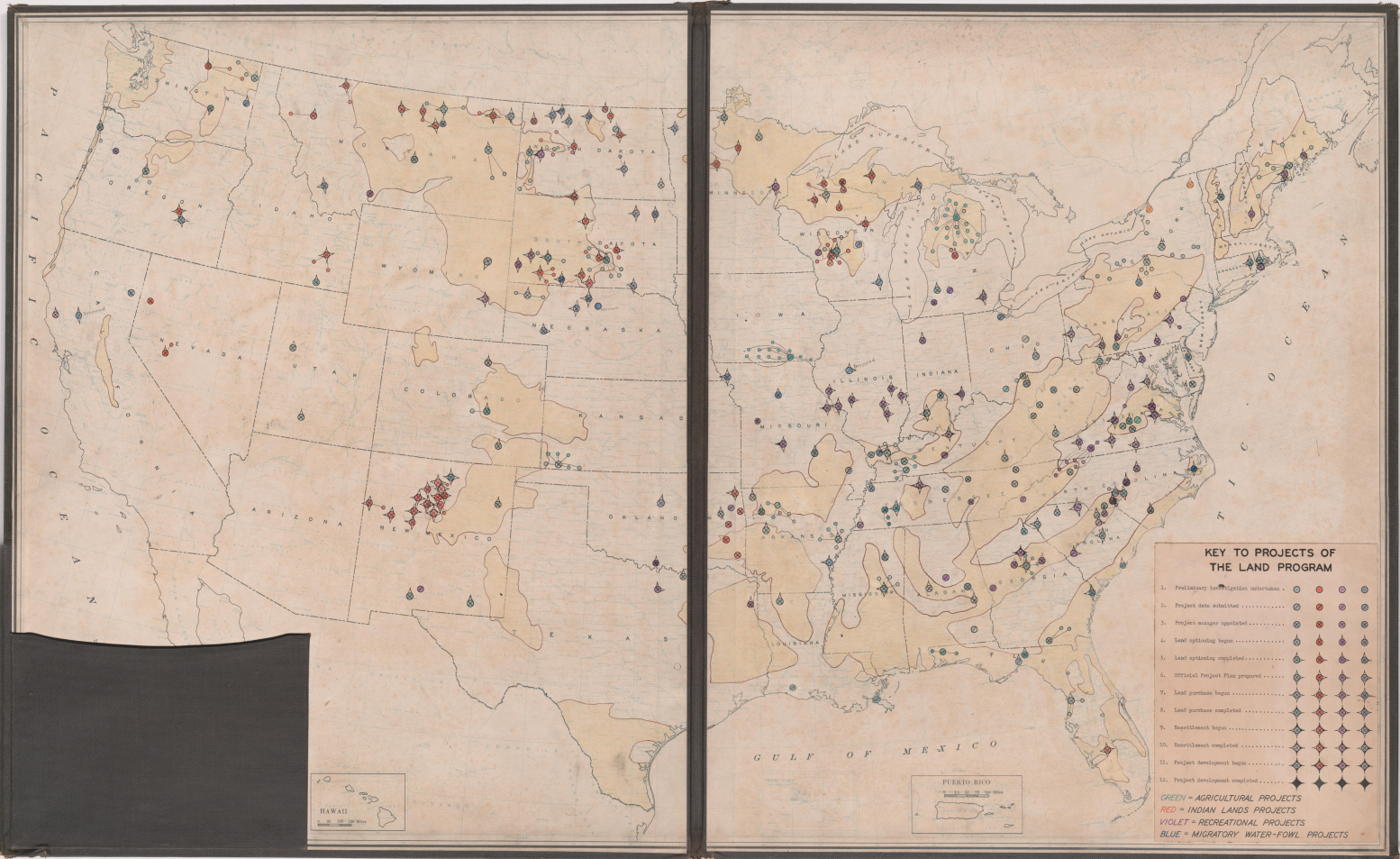


THE LAND PROGRAM

F. E. R. A.



KEY TO PROJECTS OF THE LAND PROGRAM

1. Preliminary investigation undertaken	•	•	•	•	•
2. Project date authorized	•	•	•	•	•
3. Project manager appointed	•	•	•	•	•
4. Land surveying begun	•	•	•	•	•
5. Land surveying completed	•	•	•	•	•
6. Official Project Plan prepared	•	•	•	•	•
7. Land purchase begun	•	•	•	•	•
8. Land purchase completed	•	•	•	•	•
9. Reclamation begun	•	•	•	•	•
10. Reclamation completed	•	•	•	•	•
11. Project development begun	•	•	•	•	•
12. Project development completed	•	•	•	•	•

GREEN - AGRICULTURAL PROJECTS
 RED - INDIAN LANDS PROJECTS
 VIOLET - RECREATIONAL PROJECTS
 BLUE - MIGRATORY WATER-FOWL PROJECTS



BURTONSVILLE

LAUREL

OAKCREST

BALTIMORE

MUIRKIRK

OHIO

R R

BURTONSVILLE

LAUREL

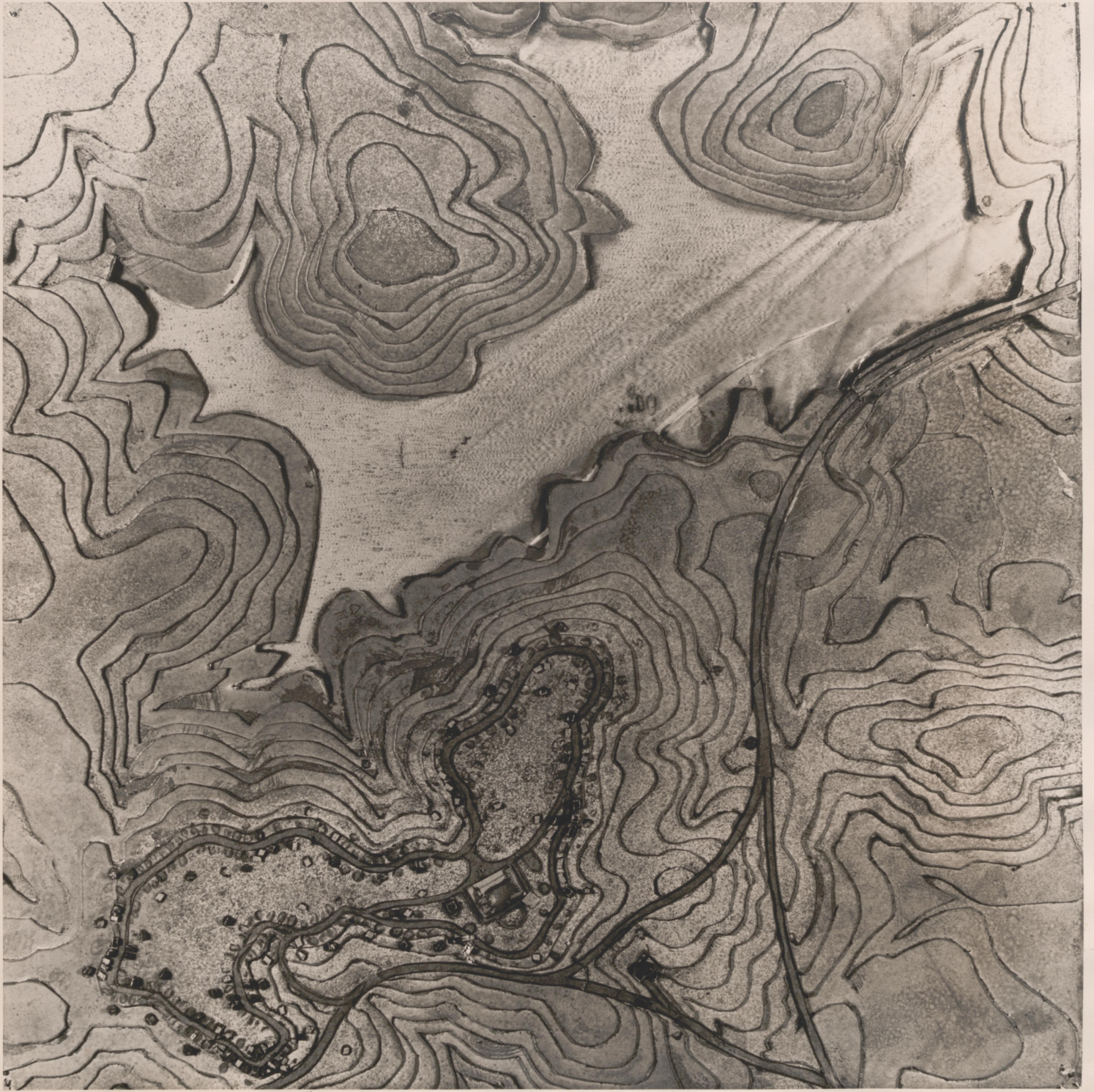
OAKCREST

BALTIMORE

MUIRKIRK



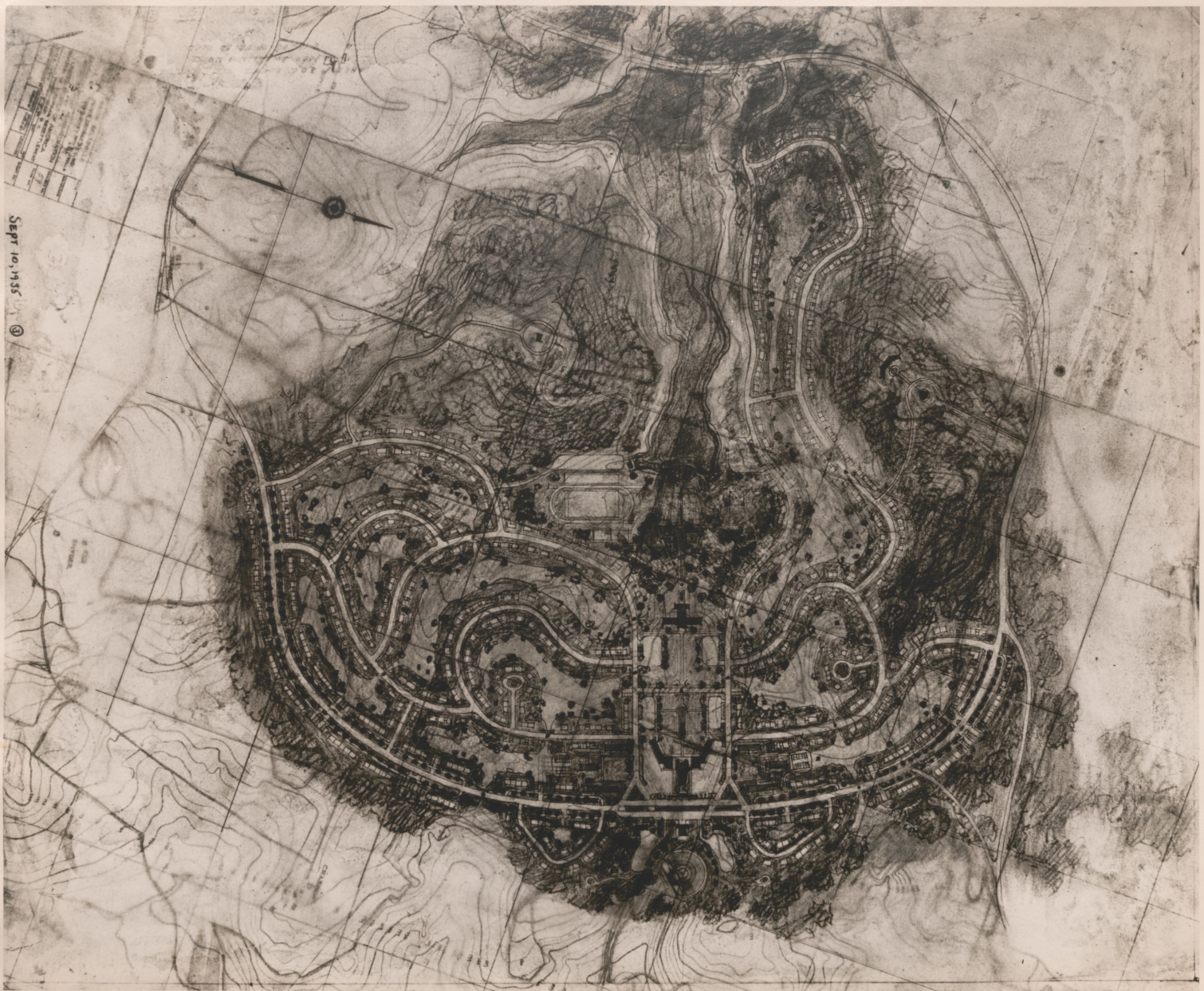






SEA ACCESS
 APPROX. 1000 DWELLING UNITS.
 APPROX. 19 MILES OF ROAD.
 MAX. DISTANCE WALKER TO SCHOOL 1/2 MILE

BEETSVILLE PROJECT		PROJECT NO.	
DIAGRAM OF TOWN PLAN		DESIGNED DATE	
RESETTLEMENT ADMINISTRATION OF THE UNITED STATES OF AMERICA DIVISION OF SUBURBAN RESETTLEMENT WASHINGTON, D. C.		PROJECT NO.	
SCALE 1" = 400'-0"		PLANNED BY	
DRAWN BY	TRACED BY	DESIGNED BY	CHECKED BY



SEPT 10, 1935

3



MATTAMUSKEET DRAINAGE DISTRICT.

THIS PLANT IS DEDICATED TO THE
SPIRIT OF CO-OPERATION WHICH HAS
HERE TRANSFORMED A GREAT LAKE
INTO DRY LAND AND SO CREATED
A NEW AND FERTILE PRINCIPALITY
FOR THE USE AND POSSESSION OF MAN.

“AND HE GAVE IT FOR HIS OPINION
THAT WHOEVER COULD MAKE TWO EARS OF
CORN, OR TWO BLADES OF GRASS, TO GROW
UPON A SPOT OF GROUND WHERE ONLY ONE
GREW BEFORE WOULD DESERVE BETTER OF
MANKIND, AND DO MORE ESSENTIAL SERVICE
TO HIS COUNTRY, THAN THE WHOLE RACE OF
POLITICIANS PUT TOGETHER.”

COMMISSIONERS FOR DISTRICT

· ACTIVE ·

DOUGLAS N. GRAVES, CHAIRMAN
JOHN P. KERR, SECRETARY
DAVID H. CARTER.

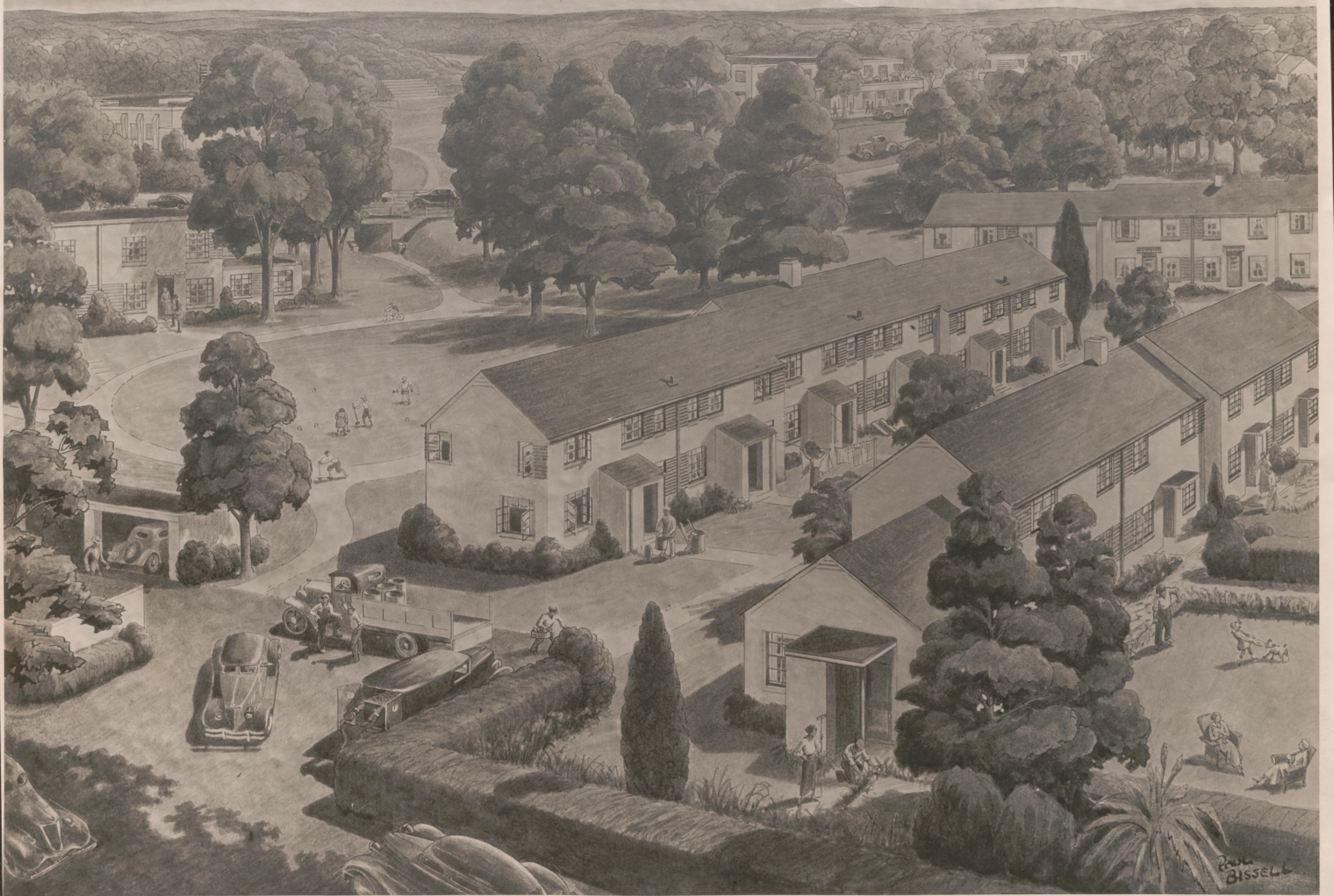
· RETIRED ·

JULIAN S. MANN, CHARLES E. MANN
THOMAS H. B. GIBBS.

ENGINEER FOR THE DISTRICT
LAWRENCE BRETT.

GENERAL CONTRACTORS
MORRIS MACHINE WORKS.
BALDWINVILLE, N.Y.-CHARLOTTE, N.C.

ENGINEERS FOR THE GENERAL CONTR'CS.
THOMAS B. WHITTED, HARRY C. TRIPP.





LOCATION OF HOUSE TYPES ADDED 1937
 U.S. DEPT. OF AGRICULTURE - BUREAU OF HOUSING

STREET NAMES & ADDRESS
 PLAN
 GREENTREE PROJECT
 REDEVELOPMENT PROJECT
 OF THE
 UNITED STATES OF AMERICA
 DIVISION OF SUBURBAN REDEVELOPMENT
 WASHINGTON, D.C.

SCALE	1" = 200'
DATE OF PLAN	APRIL 1937
DESIGNED BY	W. H. HARRIS
DRAWN BY	W. H. HARRIS
ENGRAVED BY	W. H. HARRIS
PRINTED BY	W. H. HARRIS
REVISIONS	
APPROVED BY	W. H. HARRIS
DATE	APRIL 1937



THIS PLAN NOT TO BE USED FOR CONSTRUCTION.

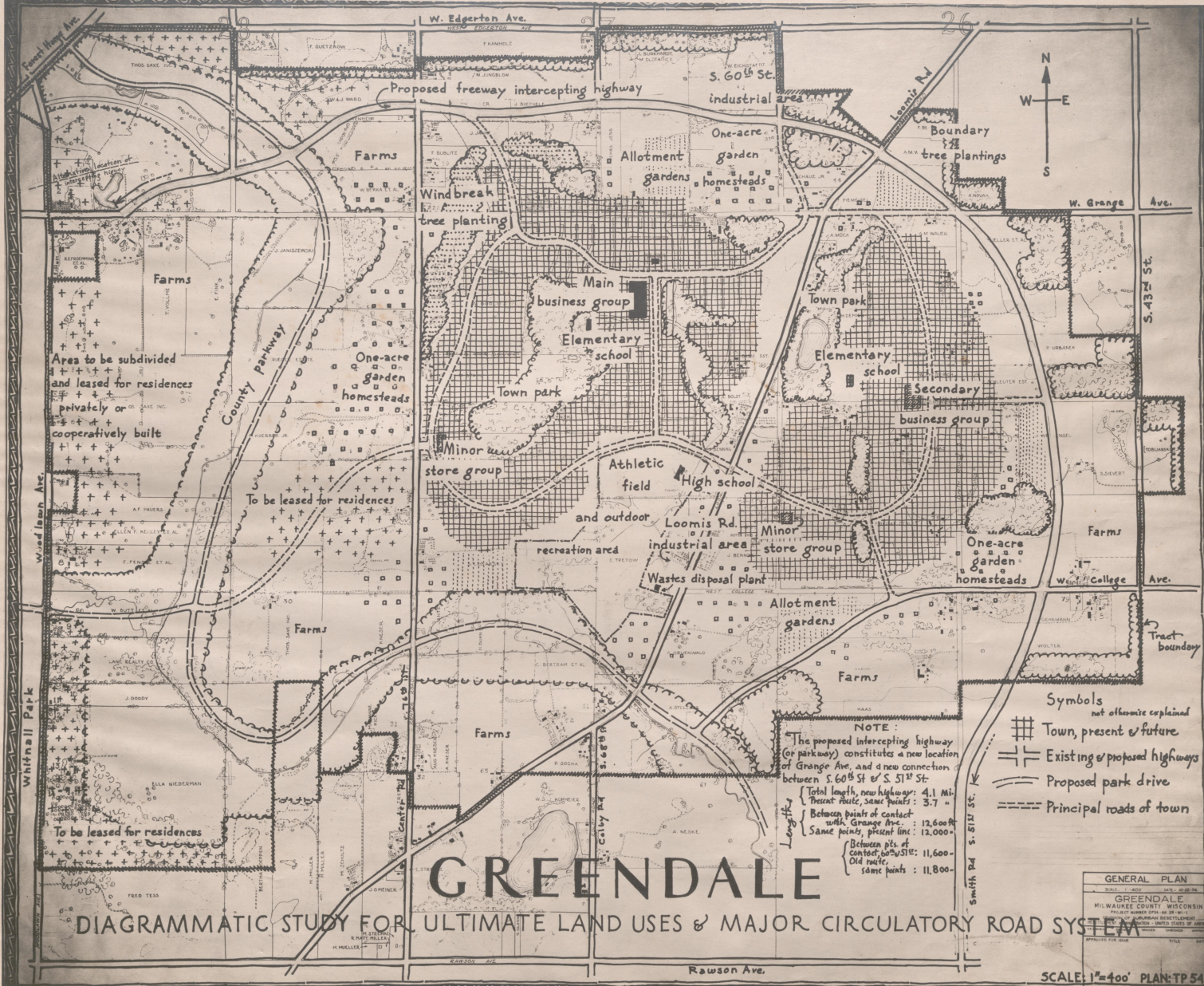
GREENDALE, WISCONSIN

DIVISION OF SUBURBAN RESETTLEMENT • RESETTLEMENT ADMINISTRATION OF THE UNITED STATES OF AMERICA

WASHINGTON, D.C. PROJECT NUMBER DP 56-89: 3A-WI-1



GREENBELT - MARYLAND	
SETTLEMENT ADMINISTRATION	
UNITED STATES OF AMERICA	
DIVISION OF SUBURBAN SETTLEMENT	
WASHINGTON, D.C.	
PROJECT	DATE
DESIGNED BY	SCALE
DRAWN BY	PROJECT NO.
CHECKED BY	DATE
APPROVED BY	



GREENDALE

DIAGRAMMATIC STUDY FOR ULTIMATE LAND USES & MAJOR CIRCULATORY ROAD SYSTEM

NOTE:
 The proposed intercepting highway (or parkway) constitutes a new location of Grange Ave. and a new connection between S. 60th St & S. 51st St.

Lengths:
 Total length, new highway: 4.1 Mi.
 Present route, same points: 3.7 "
 Between points of contact with Grange Ave.: 12,600 ft
 Same points, present line: 12,000 "
 Between pts. of contact, 60th St.: 11,600 - Old route
 same points: 11,800 "

- Symbols** not otherwise explained
- ▣ Town, present & future
 - Existing & proposed highways
 - ~ Proposed park drive
 - Principal roads of town

GENERAL PLAN
 GREENDALE
 MILWAUKEE COUNTY, WISCONSIN
 PROJECT NUMBER 1074-10-27-31
 PREPARED BY THE
 UNIVERSITY OF WISCONSIN
 LAND USE CENTER
 1954

SCALE: 1"=400' PLAN: TP 54

13154



12150





L

12111