

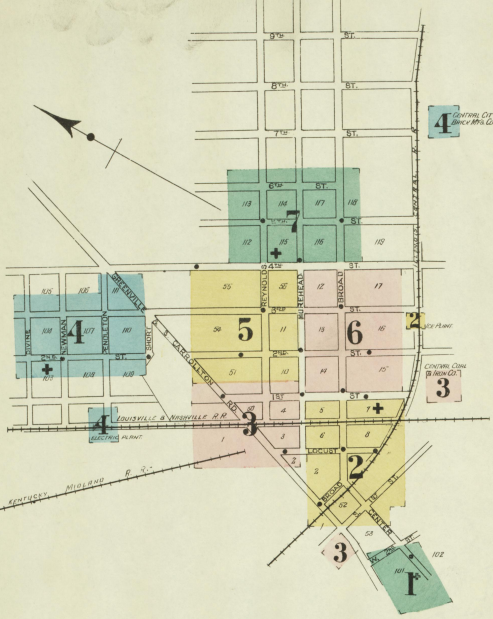


© D.F. 208,30
OCT 19 1912

INDEX.

STREETS.		SHEET	Short.	SHEET
Amplex (arbitrary)	A	2 & 3	Third	T
Broad	B	201-248 2	"	201-237 4
"	"	201-238 2	"	401-417 5
"	"	501-529 7	"	418-437 5
Center	C	15-24 1	"	421-432 6
Culbertson Court	D	201-219 1	Wassau (arbitrary)	W
Divine	D	4		2
Fifth	F	7	SPECIALS.	
Fork	F	301-317 7	Baptist Church	B
"	"	318-329 8	Baxter L. Corn Mill	C
"	"	401-417 5	Beaver Dam Planing Mill Co.	S
"	"	418-428 5	Central City Brick Mfg Co.	M
"	"	429 3	"	4
"	"	528-519 2	"	2
"	"	501-508 6	"	2
"	"	601-618 6	"	2
"	"	601-618 6	"	2
"	"	701-717 7	"	2
Greenville & S. Carrollton Road	G	101-108 2	Christian Church	Ch
"	"	108-116 3	City Hall	Cy
"	"	117-129 3	Cumberland Presbyterian Church	Cum
"	"	121-137 3	"	4
"	"	155-203 3	"	1
"	"	202-214 3	"	2
"	"	261 to 414 4	"	2
"	"	W. of S. 1st 3	"	2
Locust	L	402-419 2	Fire Department, Hose House, Center St.	F
"	"	411-414 3	"	1
"	"	415-422 3	"	7
"	"	424-427 3	"	4
Maiden Lane	M	2	First Presbyterian Church	Fst
Morehead	M	105-108 3	High School	H
"	"	109-208 3	Home Lumber Co., Planing Mill, &c.	HL
"	"	197-211 3	Hotel McDowell	HD
"	"	204-211 5	"	2
"	"	312-323 5	L. & N. R. R. Depots	I
"	"	393-397 5	"	2
"	"	401-433 7	"	2
Newman	N	4	Maonic Hall	M
Pendleton	P	4	Methodist Episcopal Church	Met
Rail Ave. (arbitrary)	R	2, 3 & 4	Opera House	O
Reynolds	R	106-134 5	Post Office	P
"	"	201-239 7	Public School	PS
Second	S	301-348 4	Roman Catholic Church	R
"	"	349-316 5	Telephone Exchange	T
"	"	518-525 5	"	6
"	"	526-528 5	Willis Hotel	W
"	"	538-548 5	"	2

NOTE.—House Numbers given are arbitrary.



KEY

(Symbol)	TIRE TRACKS AND ROOF
(Symbol)	METAL CORNER
(Symbol)	FIRE WALLS AND ROOF
(Symbol)	RAILWAY
(Symbol)	FIRE WALLS AND ROOF
(Symbol)	FRAME PARTITION
(Symbol)	CHESS WITH POOR DOOR
(Symbol)	CHIMNEY
(Symbol)	WINDOWS AND SHUTTERS
(Symbol)	WINDOWS (IF STORIES - 25 & 47)

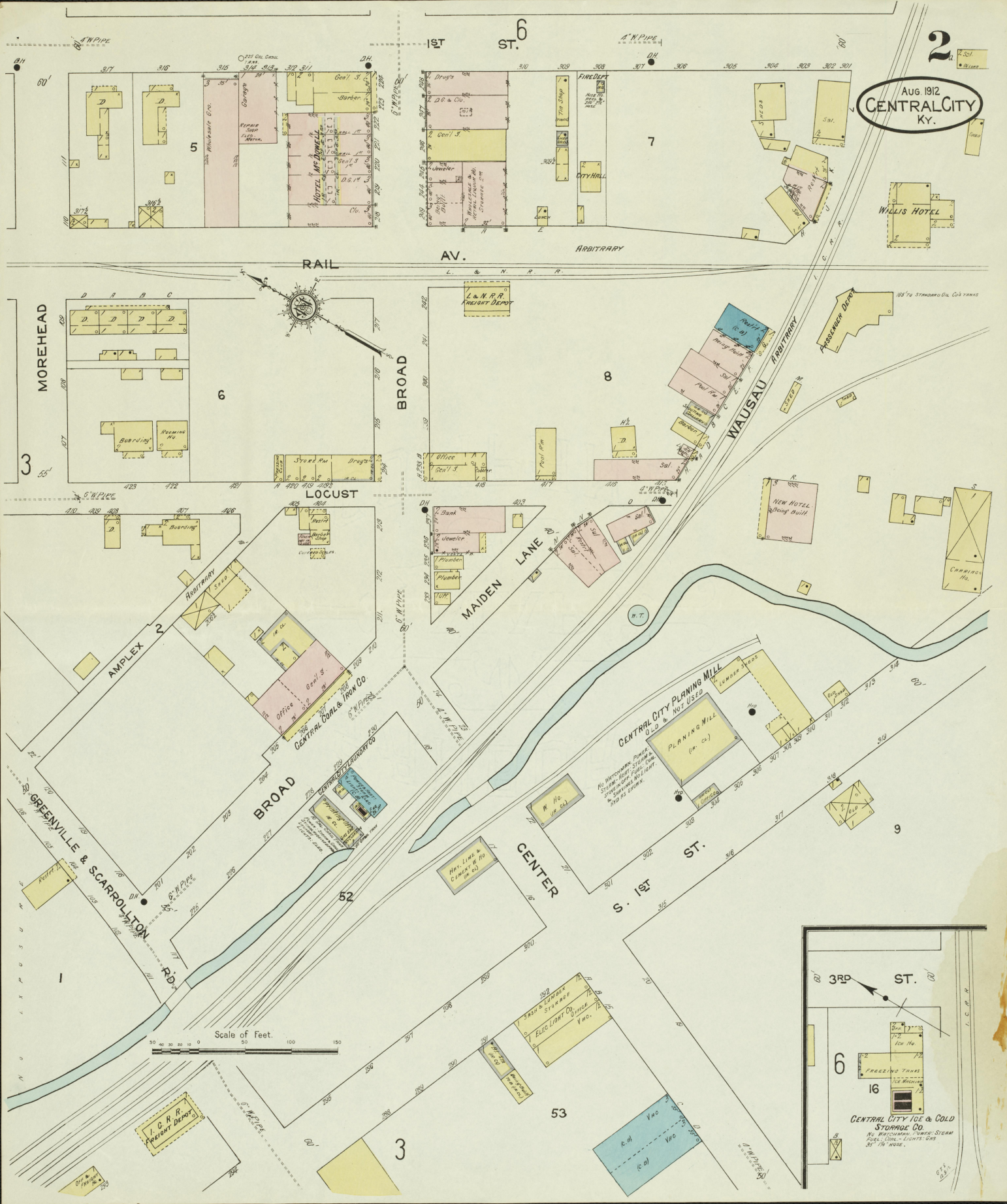
STABLE BUILDINGS COLORED YELLOW ARE FRAME OR BRICK
 BUILDINGS COLORED RED ARE BRICK
 BUILDINGS COLORED BLUE ARE BRICK
 BUILDINGS COLORED BROWN ARE BRICK
 BUILDINGS COLORED GREEN ARE SPECIALS

(Symbol) (Symbol) (Symbol) (Symbol) (Symbol) (Symbol)
 (Symbol) (Symbol) (Symbol) (Symbol) (Symbol) (Symbol)
 (Symbol) (Symbol) (Symbol) (Symbol) (Symbol) (Symbol)
 (Symbol) (Symbol) (Symbol) (Symbol) (Symbol) (Symbol)
 (Symbol) (Symbol) (Symbol) (Symbol) (Symbol) (Symbol)

INDICATE RELATIVE HEIGHTS
 FIRE STATION AS SHOWN IN KEY MAP
 ALL STREET NUMBERS ARE ACTUAL
 CONSECUTIVE STREET NUMBERS ARE ARBITRARY

Scale of Feet: 0, 50, 100, 150

AUG. 1912
CENTRAL CITY
KY.



3RD ST.

6

16

CENTRAL CITY ICE & COLD STORAGE CO.
No. 160 CHURCH ST. ST. LEON
FUEL, LUMBER, LIGHTS, GAS
5 1/2" WIDE.

Scale of Feet.
0 50 100 150

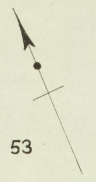
G. R. R. FREIGHT DEPOT

CENTRAL CITY PLANNING MILL
OLD & NOT USED
PLANING MILL (P. Co.)
LUMBER DEPT.
ALL WAREHOUSES, PLANING MILLS, SHEDS, STABLES, HOUSES, STORES, AND OTHER BUILDINGS IN THIS AREA ARE NOT TO BE USED FOR ANY OTHER PURPOSE THAN AS SHOWN.

CENTRAL CITY ICE & COLD STORAGE CO.

GREENVILLE & S. CARROLLTON R.D.

2 S. 1ST ST.



53

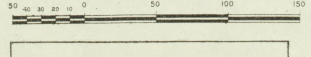
CENTRAL COAL & IRON CO.
NO WATCHMAN - NO CLOCK - LIGHTS ELECTRIC I.E.R.
PUMPS STEAM-HEAT - COAL - WINDS - CONN. WIND
CITY MAIN - 250' 2 1/2" HOLES -

CENTRAL CITY LUMBER & MFG. CO.
SAW & PLANING MILL
NO WATCHMAN - NO LIGHTS -
PUMPS - STEAM - HEAT -
SPRING DR. - FUEL - COAL -

GREENVILLE &

LOCUST

Scale of Feet.



3

AUG. 1912
CENTRAL CITY
Ky.

RAIL AV. R.

S. CARROLLTON RD.

REYNOLDS

ELECTRIC MOTOR
PLANING MILL &
CARP. SHOP

HOME LUMBER CO.
PLANING MILL & CARP. SHOP
NO WATCHMAN - NO LIGHTS -
PUMPS - ELECTRIC MOTOR -
HEAT - STOVE IN OFF. -

MOREHEAD

6

8 P.
9/16/12



DIVINE

PENDLETON

103

104

105

NEWMAN

108

107

106

PENDLETON

109

SHORT

110

GREENVILLE & S. CARROLLTON RD.

4TH ST.

55

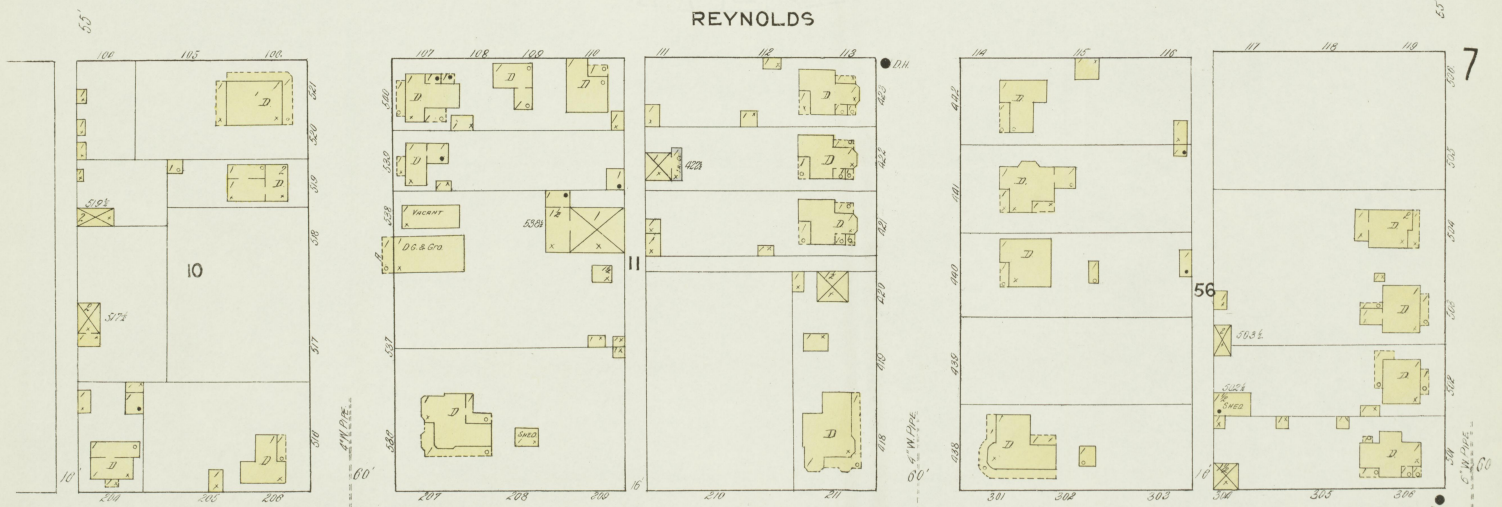
Scale of Feet

AUG. 1912
CENTRAL CITY
Ky.

5



REYNOLDS



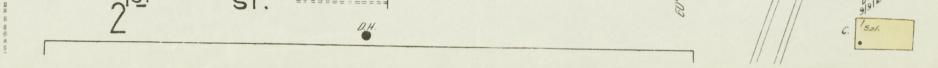
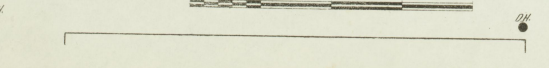
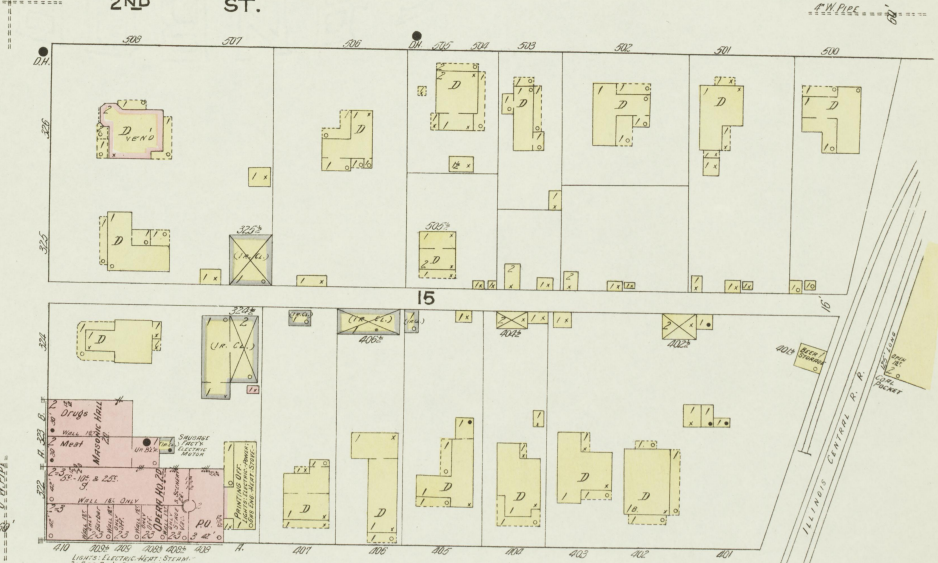
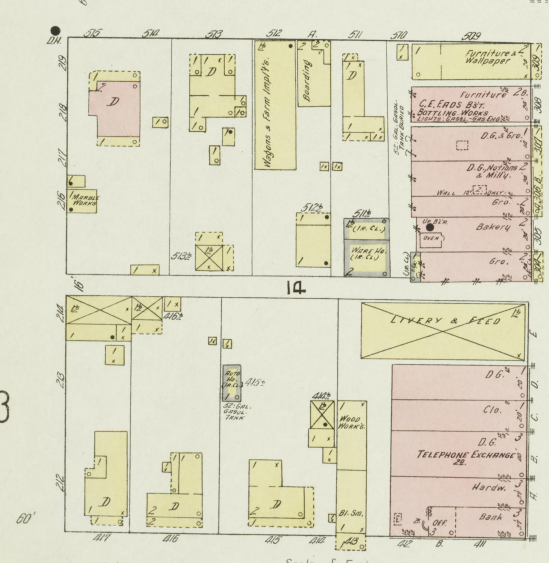
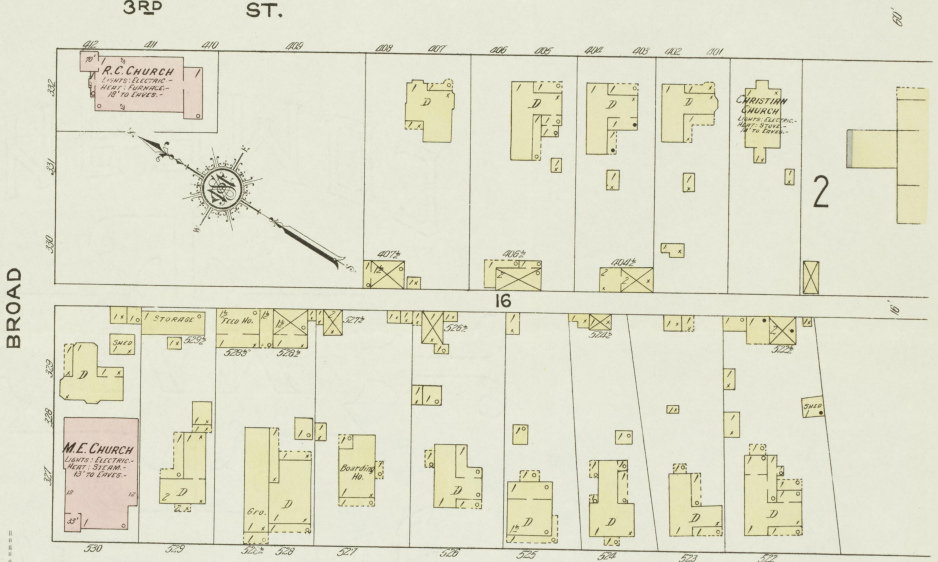
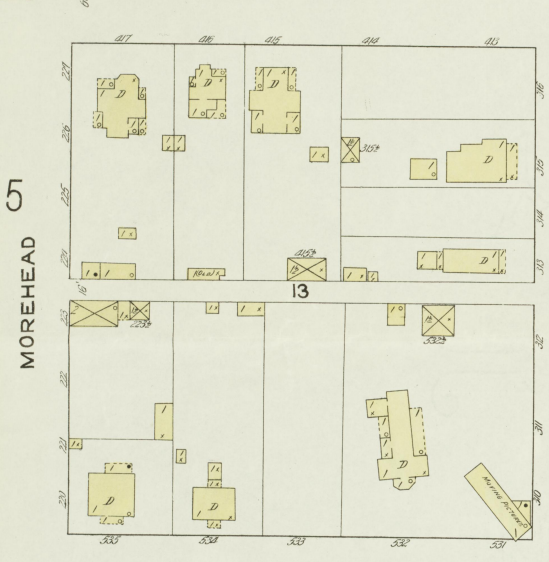
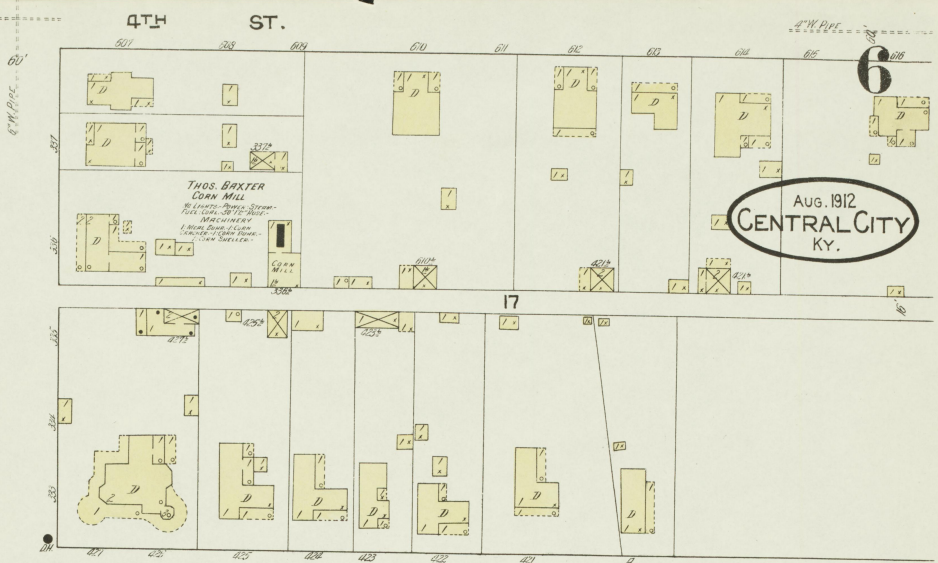
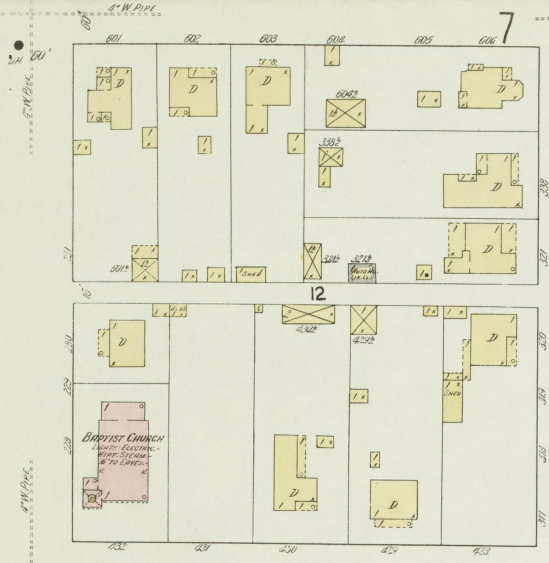
MOREHEAD

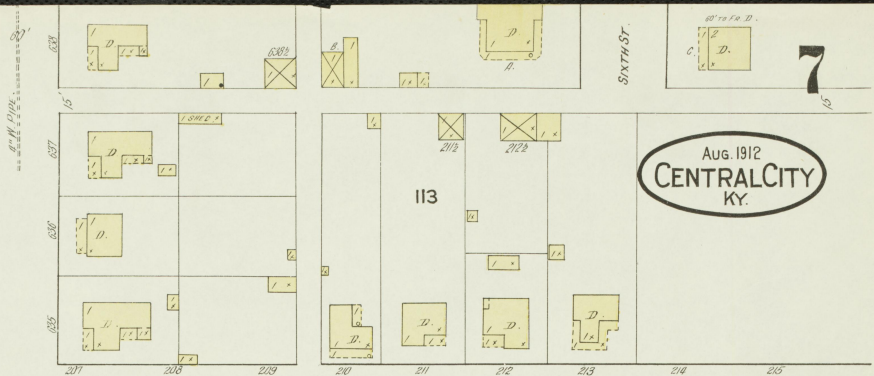
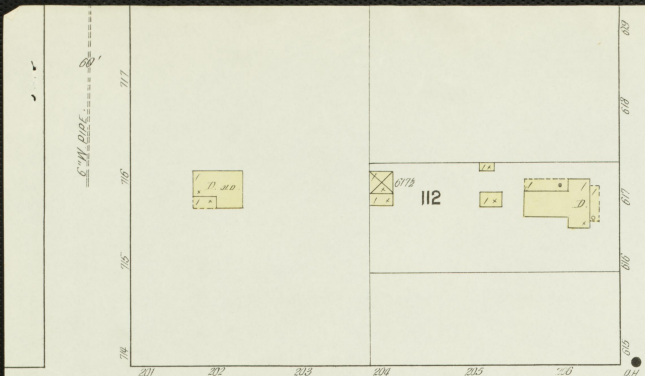
6

Scale of Feet.

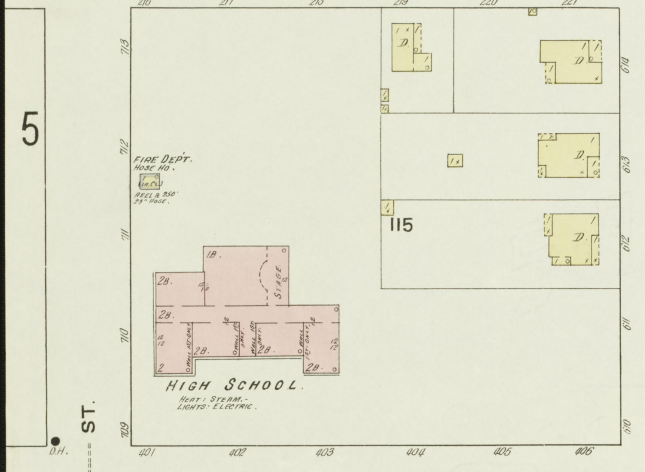


AUG. 1912
CENTRAL CITY
KY.

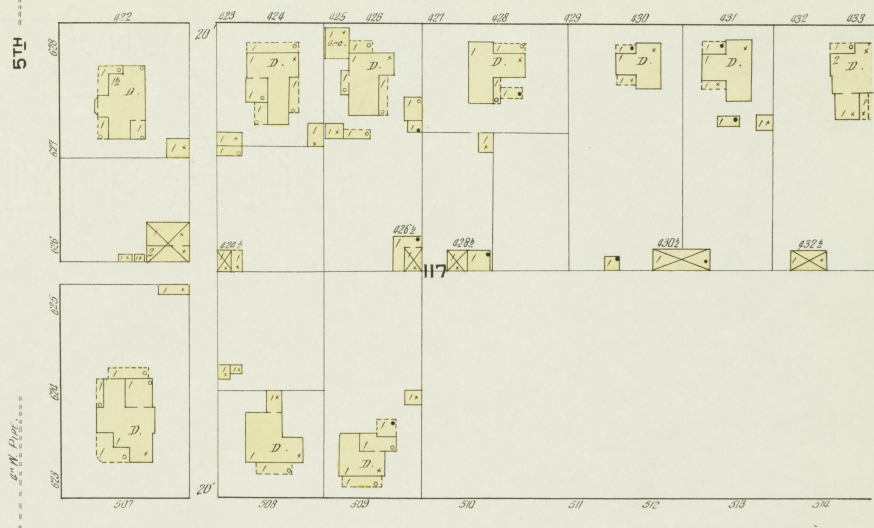
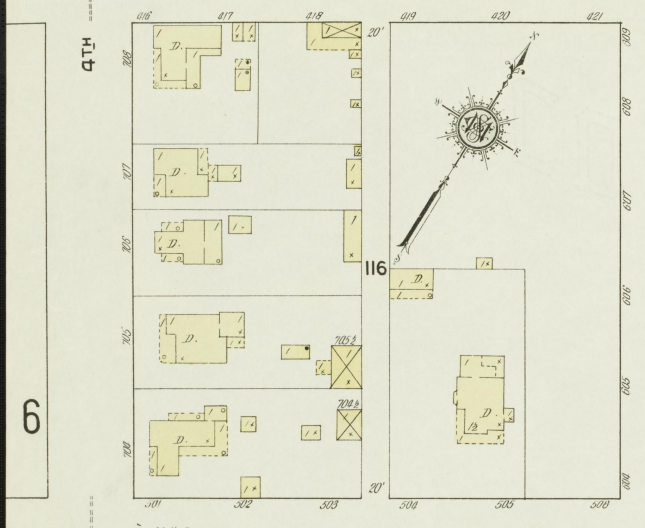




REYNOLDS



MOREHEAD



BROAD

