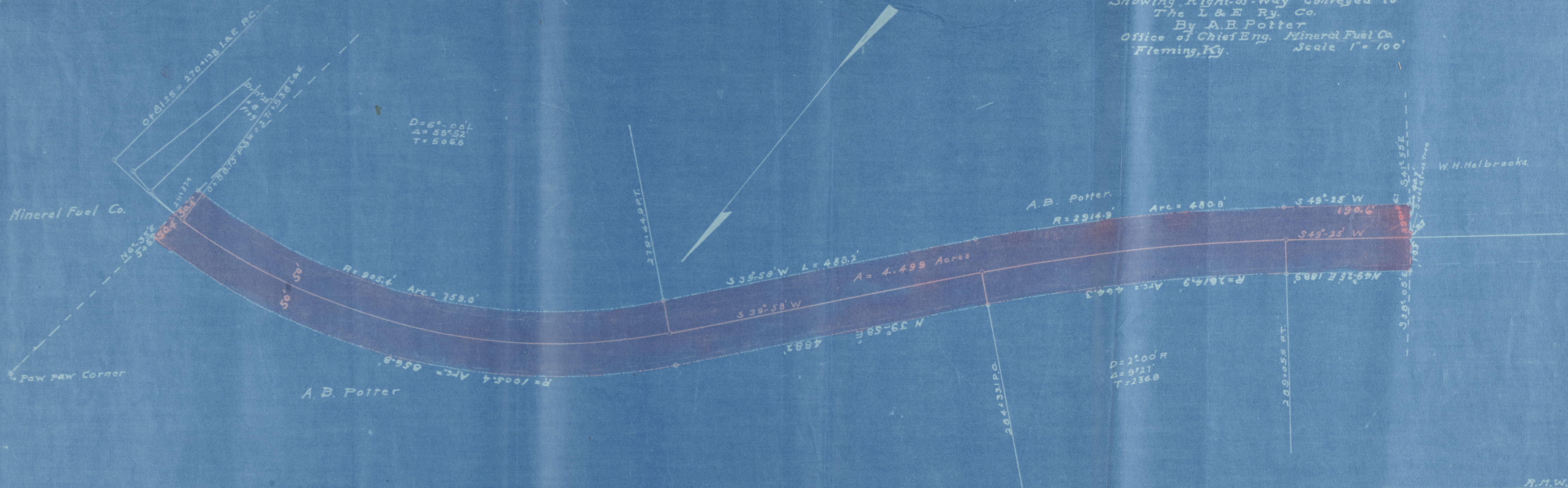


PLAN
 Showing Right-of-Way Conveyed to
 The L & E Ry. Co.
 By A.B. Potter
 Office of Chief Eng. Mineral Fuel Co.
 Fleming, Ky. Scale 1" = 100'



Beginning at station 271+374 on & of Potters Fork Spur of L. & E. R.R. and on property line of A.B. Potter and Mineral Fuel Co. S 6° 35' W 340.4 ft. from corner on said property line marked by a paw paw tree. Thence S 6° 35' W 50.4 ft. Thence, keeping 50 ft. from & of said R.R., by curve to left R=905.4' distance of 759.0' to a point opposite sta. 270+44.9 P.T. on & of said R.R.; Thence S 38° 58' W 488.2'; Thence by curve to right R=2914.9' distance of 480.6'; Thence S 49° 25' W 190.6' to point of intersection of line with property line of W.H. Holbrooks and A.B. Potter; Thence N 41° 55' W 40.7' along said property line to a corner on said property line marked by a sassafras tree, which is 9.3' south 38° 05' E from Sta. 290+96.7 on & of said R.R.; Thence N 38° 05' W 59.4' along said property line to a point; Thence, keeping 50' from & of said R.R., N 49° 25' E 188.9'; Thence by curve to left R=2914.9' distance of 480.6'; Thence N 39° 58' E 488.2'; Thence by curve to Right R=1005.4' distance of 656.8' to intersection of this line with property line of A.B. Potter and Mineral Fuel Co.; and thence S 6° 35' W 50.4' to point of beginning. Containing 4.499 Acres.