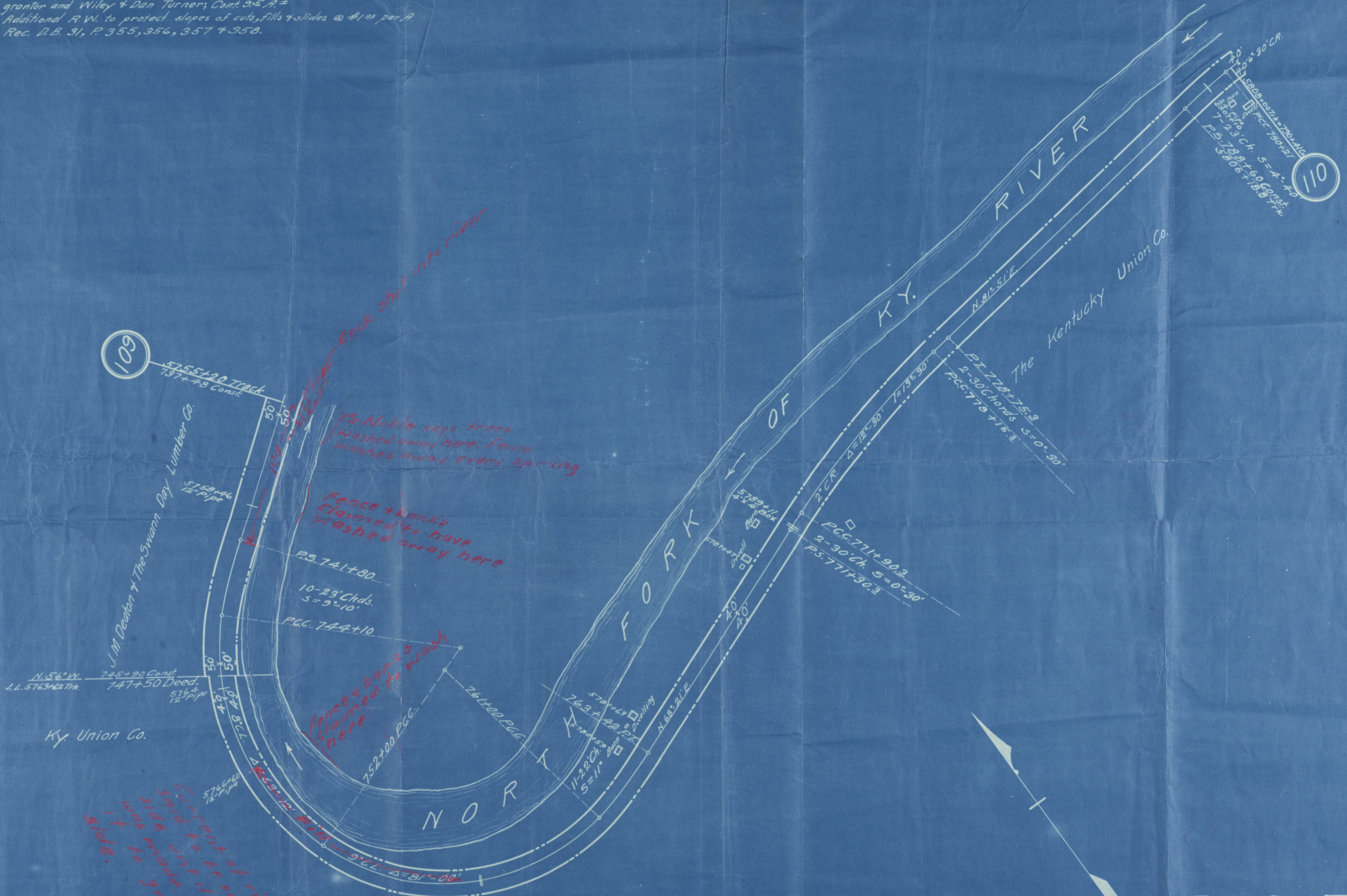


Deed # J.M. Deaton & wife, Mary Deaton, and the Swann-Day Lumber Co. to L. & E. Ry. Co. - Feb. 26, 1911 - Cons. # 2100.
 Deed covers two strips of land.
 Strip: - R.W. 50' each side E, begin at L.L. bet granors and Carl Spicer at or near Const. Sta. 722+30; thence up river 2520± to L.L. bet granors and Ky Union Co. Cont. 6.A.± Ry. Co. to make and maintain a crossing at or near the point where granors road leading to the upper Cove field on granors farm crosses R.R. Recorded in D.B. 30, P. 414-415-416 & 417.

Deed # Kentucky Union Co. to L. & E. Ry. Co. - Feb. 21, 1911 - Cons. # 122.
 R.W. 40' each side E; begin at L.L. bet granor and the Jack South heirs at or near Const. Sta. 747+50; thence up river 5199± to L.L. between granor and Wiley & Dan Turner; Cont. 3.5.A.±
 Additional R.W. to protect slopes of cuts, fills & slides @ \$1.00 per A
 Rec. D.B. 31, P. 355, 356, 357 & 358.



109

110

L. & E.
 MILE 110.

SCALE 1"=200'

SEPT. 1914

Breathitt County, Ky.

Handwritten notes in red ink:
 1. 50' strip of river
 2. 50' strip of river
 3. 50' strip of river
 4. 50' strip of river
 5. 50' strip of river
 6. 50' strip of river
 7. 50' strip of river
 8. 50' strip of river
 9. 50' strip of river
 10. 50' strip of river
 11. 50' strip of river
 12. 50' strip of river
 13. 50' strip of river
 14. 50' strip of river
 15. 50' strip of river
 16. 50' strip of river
 17. 50' strip of river
 18. 50' strip of river
 19. 50' strip of river
 20. 50' strip of river
 21. 50' strip of river
 22. 50' strip of river
 23. 50' strip of river
 24. 50' strip of river
 25. 50' strip of river
 26. 50' strip of river
 27. 50' strip of river
 28. 50' strip of river
 29. 50' strip of river
 30. 50' strip of river
 31. 50' strip of river
 32. 50' strip of river
 33. 50' strip of river
 34. 50' strip of river
 35. 50' strip of river
 36. 50' strip of river
 37. 50' strip of river
 38. 50' strip of river
 39. 50' strip of river
 40. 50' strip of river
 41. 50' strip of river
 42. 50' strip of river
 43. 50' strip of river
 44. 50' strip of river
 45. 50' strip of river
 46. 50' strip of river
 47. 50' strip of river
 48. 50' strip of river
 49. 50' strip of river
 50. 50' strip of river
 51. 50' strip of river
 52. 50' strip of river
 53. 50' strip of river
 54. 50' strip of river
 55. 50' strip of river
 56. 50' strip of river
 57. 50' strip of river
 58. 50' strip of river
 59. 50' strip of river
 60. 50' strip of river
 61. 50' strip of river
 62. 50' strip of river
 63. 50' strip of river
 64. 50' strip of river
 65. 50' strip of river
 66. 50' strip of river
 67. 50' strip of river
 68. 50' strip of river
 69. 50' strip of river
 70. 50' strip of river
 71. 50' strip of river
 72. 50' strip of river
 73. 50' strip of river
 74. 50' strip of river
 75. 50' strip of river
 76. 50' strip of river
 77. 50' strip of river
 78. 50' strip of river
 79. 50' strip of river
 80. 50' strip of river
 81. 50' strip of river
 82. 50' strip of river
 83. 50' strip of river
 84. 50' strip of river
 85. 50' strip of river
 86. 50' strip of river
 87. 50' strip of river
 88. 50' strip of river
 89. 50' strip of river
 90. 50' strip of river
 91. 50' strip of river
 92. 50' strip of river
 93. 50' strip of river
 94. 50' strip of river
 95. 50' strip of river
 96. 50' strip of river
 97. 50' strip of river
 98. 50' strip of river
 99. 50' strip of river
 100. 50' strip of river