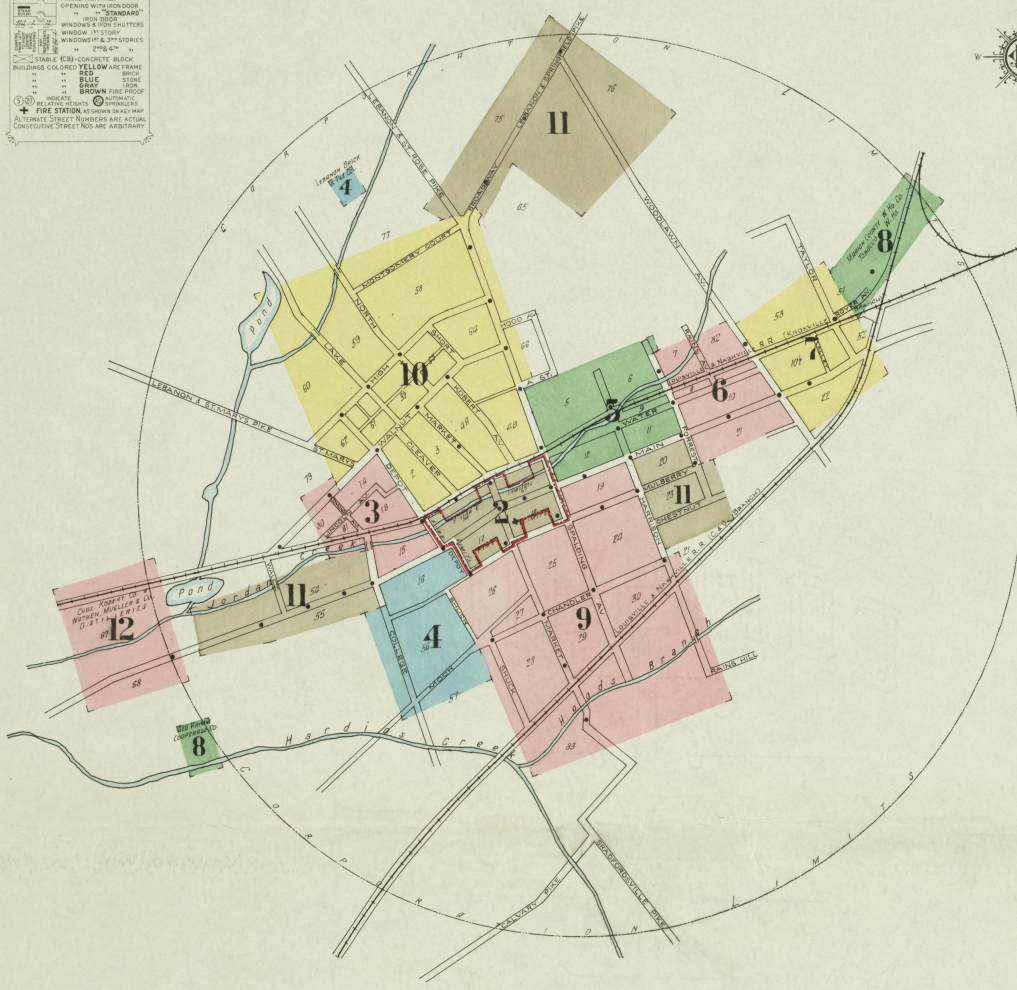


APR 24 1915



C.D.F. 29213

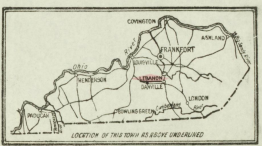
KEY: Symbols for various building types and features. Includes: Stable (C), Concrete Block Buildings (Yellow and Pink), Fire Station (Red), Fire Alarm Box (Red), Fire Hydrant (Red), Fire Hose (Red), Fire Ladder (Red), Fire Truck (Red), Fire Engine (Red), Fire Alarm (Red), Fire Alarm Box (Red), Fire Hydrant (Red), Fire Hose (Red), Fire Ladder (Red), Fire Truck (Red), Fire Engine (Red), Fire Alarm (Red), Fire Alarm Box (Red), Fire Hydrant (Red), Fire Hose (Red), Fire Ladder (Red), Fire Truck (Red), Fire Engine (Red).



WATER FACILITIES: Gravity & Direct Pumping system owned by Town. Pumping station at Calvary 5 miles from Lebanon. Water supply taken from North Fork of Salt River through 27" main to intake well at Pump No. 1 and is then pumped through an 8" force main 2 1/2 miles into 2 reservoirs, capacity 200,000 gal. & 100,000 gal. respectively. Located 2 1/2 miles from Lebanon and elevated 190' above business portion of town. 1 1/2" Leavelle made expansion steam pump 400,000 gal. capacity 100,000 gal. per day and 1 Leavelle-Dunk-Gordon compound duplex steam pump 16.25" x 10.5" x 8", capacity 900,000 gal. per day. Pumping direct into distributing mains and excess goes to reservoirs pumping however being done only to fill reservoirs. Domestic and Fire pressure 125 lbs. per sq. inch. Average daily consumption 300,000 gal. System installed in 1909. No record kept of additions and extensions. Approximate 55' of 4" to 6" distributing mains, 2 1/2 miles 8" force main and 2 1/2 miles feed main from reservoir. At present 53 double hydr.

FIRE DEPT: 1 Hose Company (1 Chief and 5 men) Partly paid. 1 1/2" hitch drop harness Combination Hose & Ladder Truck, carrying 2-3 gal. chem. extgrs. ladders, and 1500' 2 1/2" C.P.L. hose. 2 hose reels - 300' 2 1/2" hose each. 300' 2 1/2" hose in reserve.

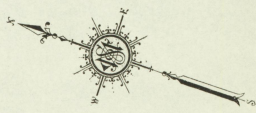
Public lights: arc lamps, run on moonlight schedule. Principal streets macadamized others in good condition. Grades practically level.



INDEX

INDEX table listing streets and their corresponding house numbers. Columns include street names (A, B, C, D, E, F, G, H, I, J, K, L, M, N, O, P, Q, R, S, T, U, V, W, X, Y, Z) and house numbers. Includes a 'SPECIALS' section listing specific buildings and their addresses.

NOTE.—House Numbers given are arbitrary.



10
MARKET ST.

WATER

5 SPALDING ST. AV.

9

2

MAIN

MULBERRY

MARKET

10
MARKET ST.

WATER

14

MAIN

MULBERRY

DEPOT

4

DEPOT 3

LEBANON MILLING CO.
FLOUR MILL

Scale of Feet.
50 100 150

MAR 1915
LEBANON
KY

3

WALNUT

80

LINCOLN AV.

81

EDMONDS AV.

IA

IB

G. B. BORDERS.
COAL & TRANSFER CO.

W. H. MCELROY & CO.
COAL YARD.

DEPOT

L. & N. R.
PASSENGER STATION
Coal, Freight

L. & N. R. FREIGHT SHED
WOOD PORTS

WATER ST.

54

COLLEGE

11

JORDAN CREEK

15

Form Impvt
Ware Ho

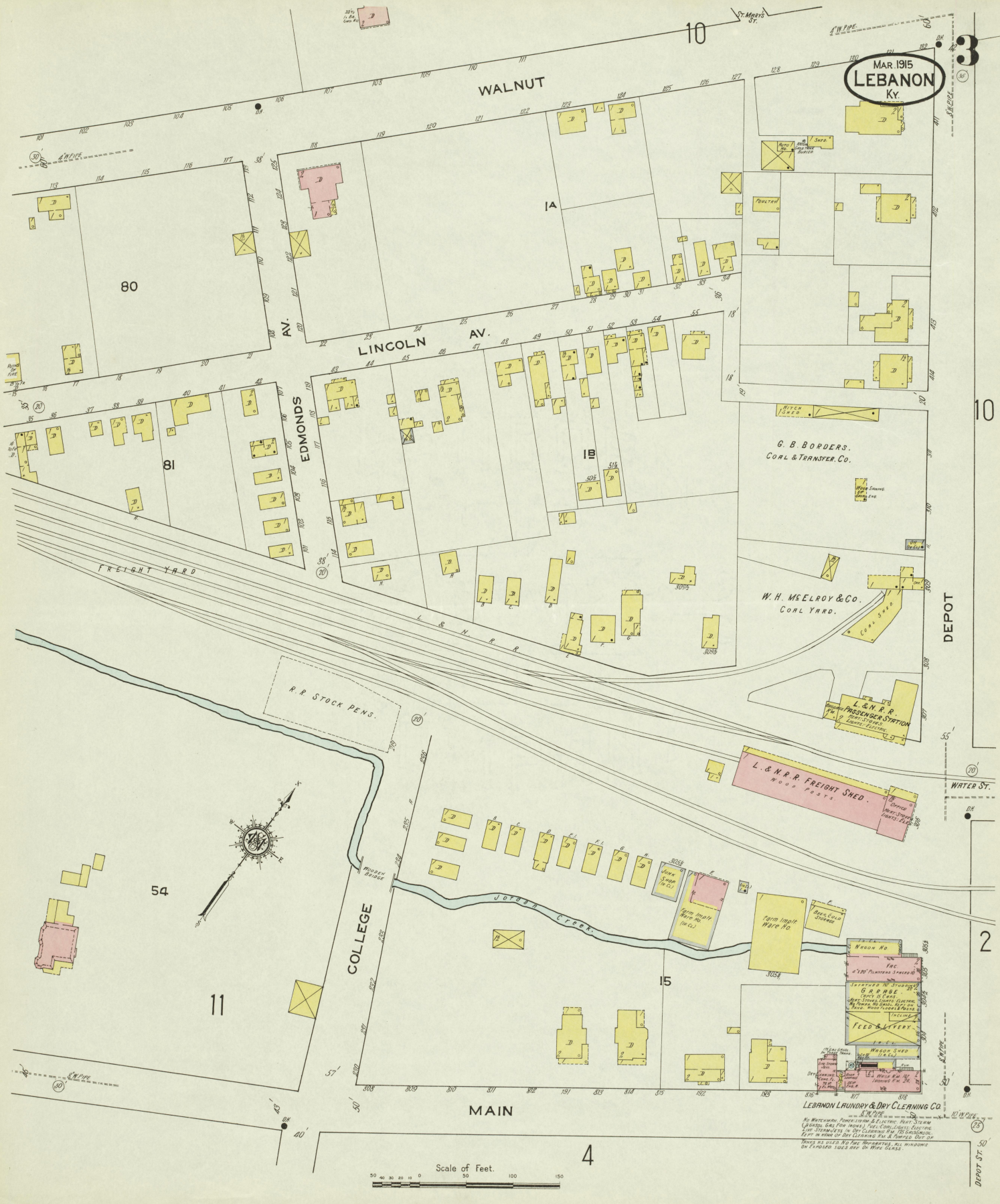
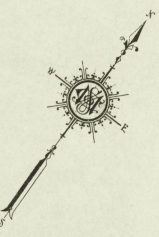
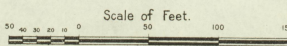
WOOD SHED
L. & N. R. FREIGHT SHED
L. & N. R. PASSENGER STATION
L. & N. R. COAL YARD

2

MAIN

4

LEBANON LAUNDRY & DRY CLEANING CO.
No. 372
No. Washboard, Press, Sewing & Electric. Flat Steam
Lubricator and Flat Iron. Gas Cook Stoves. Electric
and Steamers in Dry Cleaning Bar. To be located
at the corner of the Lebanon Park & Garage. Set up
within 10 days. No time to be wasted. All windows
and doors to be closed. In force 1915



N O E X P O S U R E

3

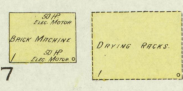
MAR 1915
LEBANON
KY.

4

2
DEPOT



LEBANON BRICK & TILE CO.
NO HEAVY POWER LIFTING.
NO LIFTING NO HOIST - PULLING IN
BLK. NO FIRE REQUIREMENTS

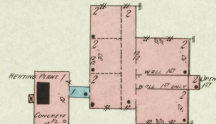


77



N O E X P O S U R E

11



LEBANON PUBLIC SCHOOL
BEST INDUCT STEAM
LIGHT ELECTRIC
NO FIRE REQUIREMENTS

55

MAIN

16

MULBERRY ST.

56

9

COLLEGE

SHUCK



MOCK

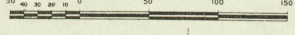
57

MOCK ST.

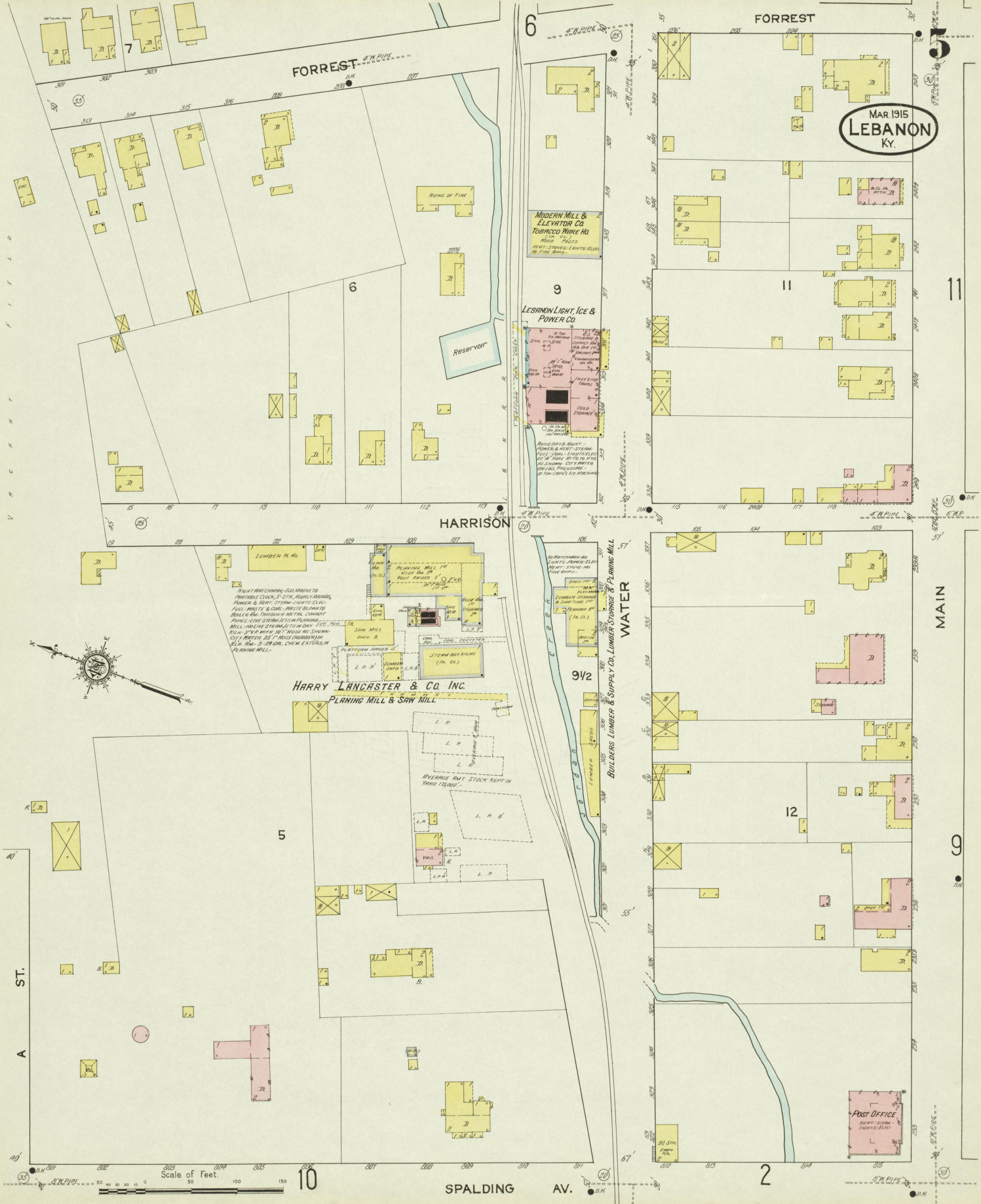
W.P. CHANDLER ST.

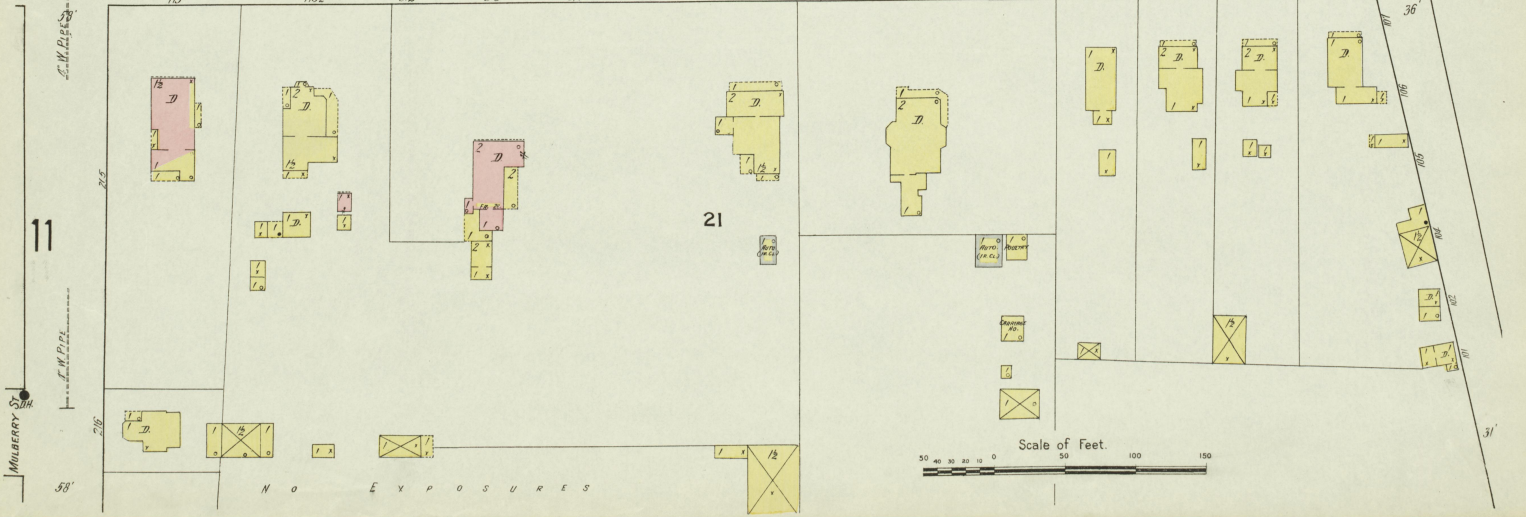
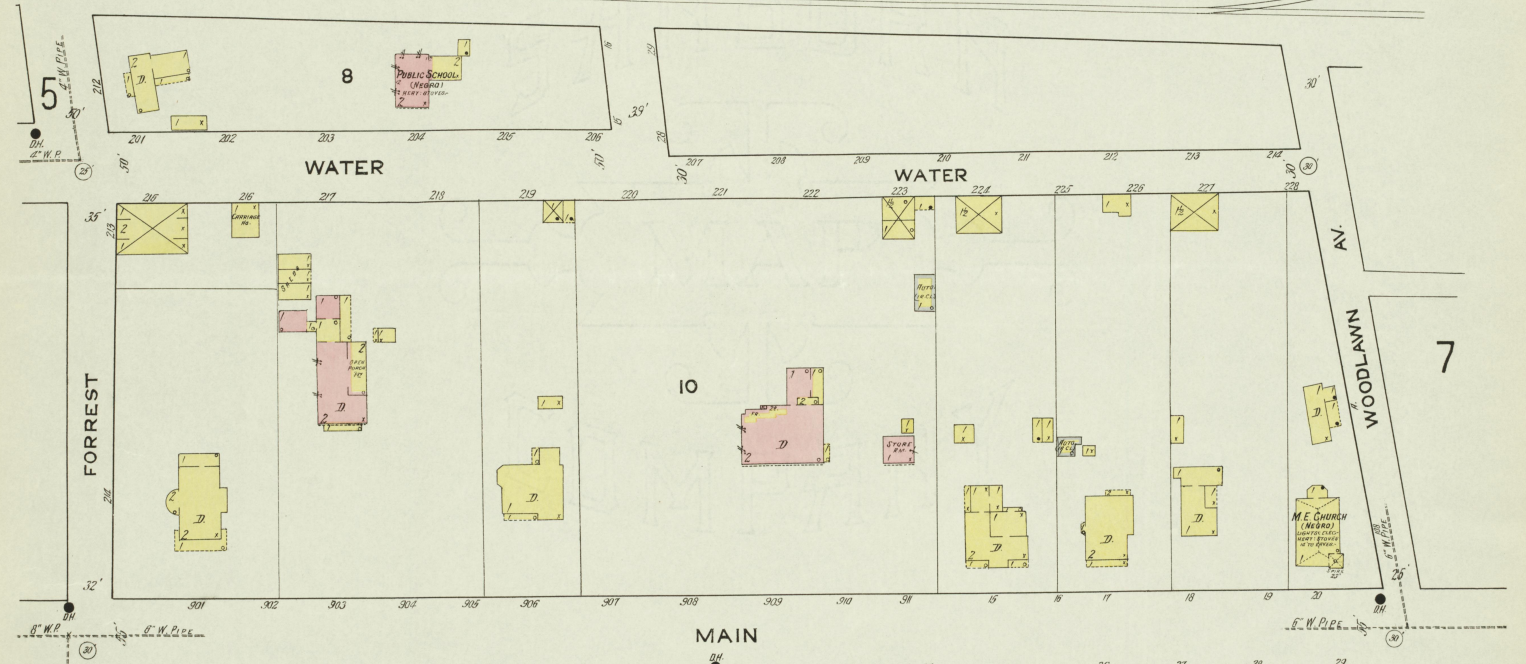
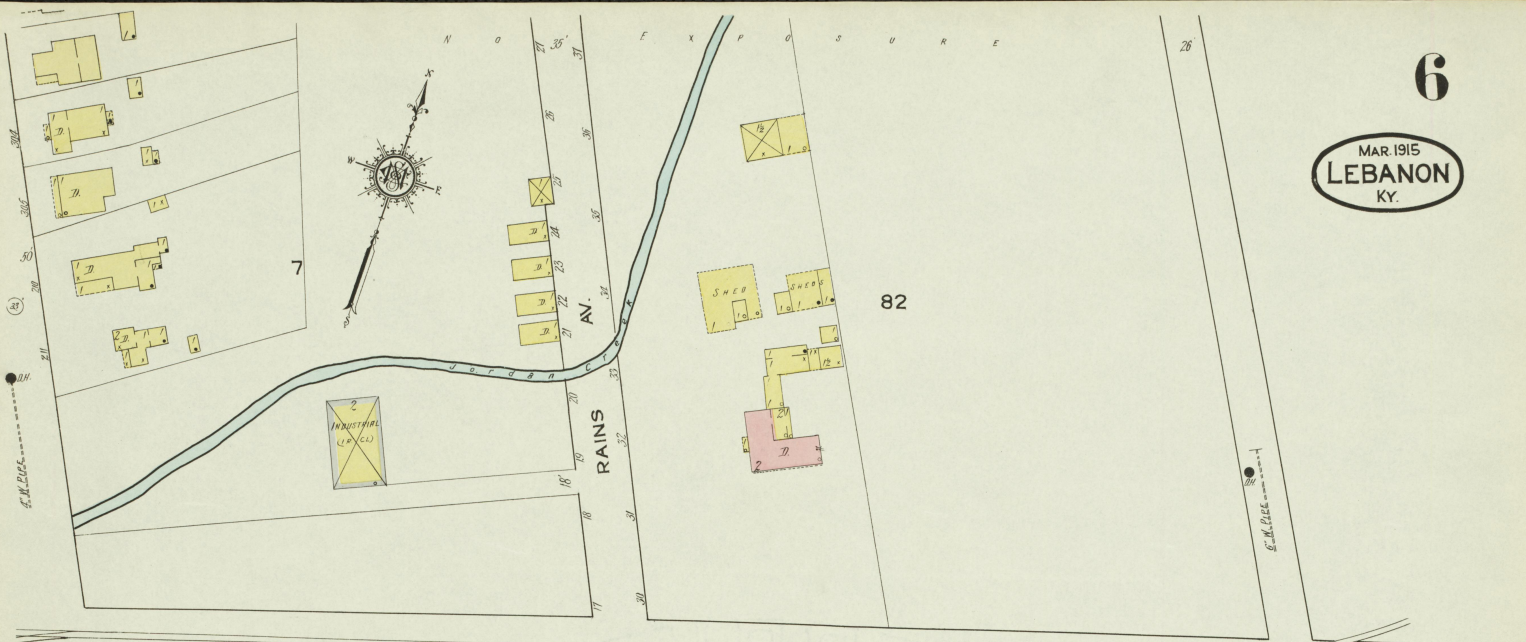
SHUCK ST.

Scale of Feet.



N O E X P O S U R E





MAR. 1915
LEBANON
KY.

LEBANON LUMBER CO. INC. SAW MILL & LUMBER YARD

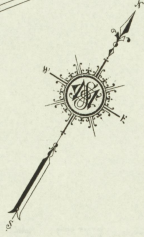
NO EXPOSURE
LEBANON HARDWOOD FLOORING CO.

PLANING MILL
OF
SAWING CO. (P.C.)

LEBANON LUMBER CO. INC.
SAW MILL

HARDWOOD FLOORING CO.
MFRS OF HARDWOOD FLOOR S.

(MIGHT PROVE USEFUL FOR INVESTIGATION. WORKMAN PORTABLE LOCK.
BENCH (POUNDS) (FACE-HANDS) (STAMPING MILL) (S) (S) (S)
STAMP. WREST. STOVES. PAUL. WREST. & CAR. LIGHTS.
ELECT. DIE. WREST. DOWN TO BOLLER AND TANKS.
MOTOR COVERED. TWO 3 GAL. CYCLE PUMPS. & 2 WED
WITH 20 1/2 IN. PLANING MILL. ONE 3 GAL. CYCLE
STOVE IN SAW MILL.



53

SCATTERED
LUMBER PILES

L.P. R. & B. HIGH

APPROXIMATE AMOUNT OF
STOCK IN YARD
50,000'

SIDING

51

8

TAYLOR

ROVER AV. (E.W. P.C.)

WATER ST.

WOODLAWN

10 1/2

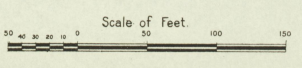
52

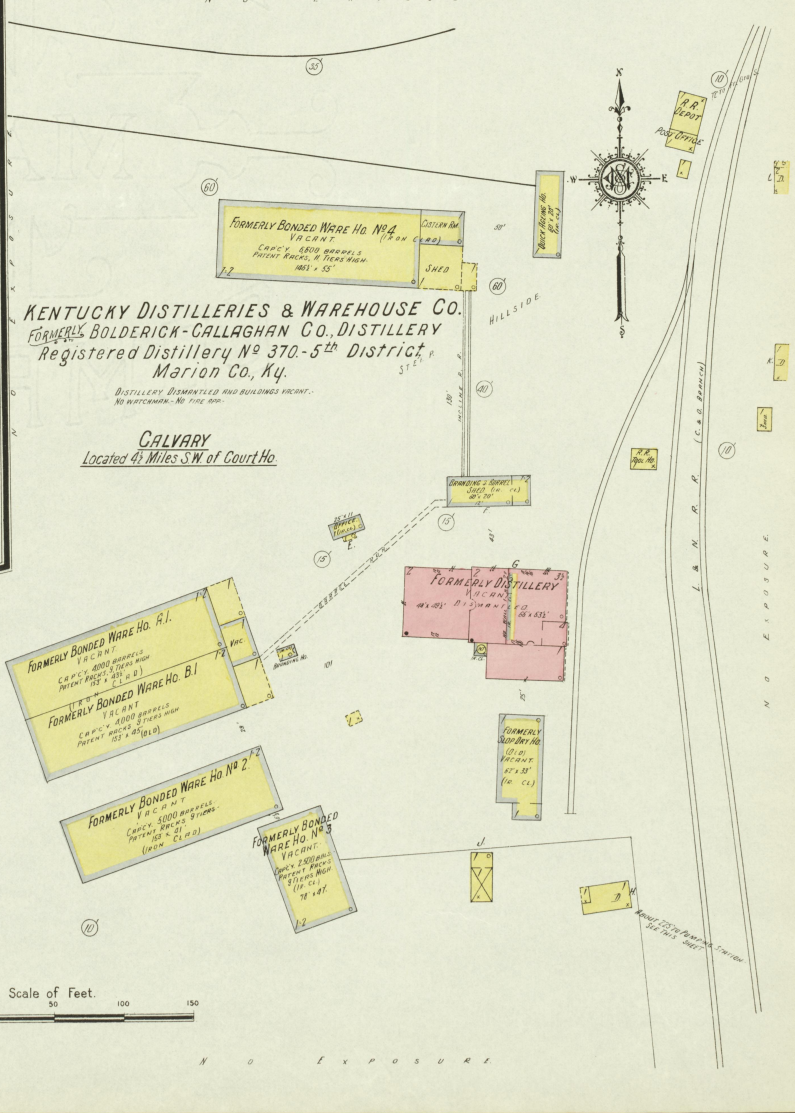
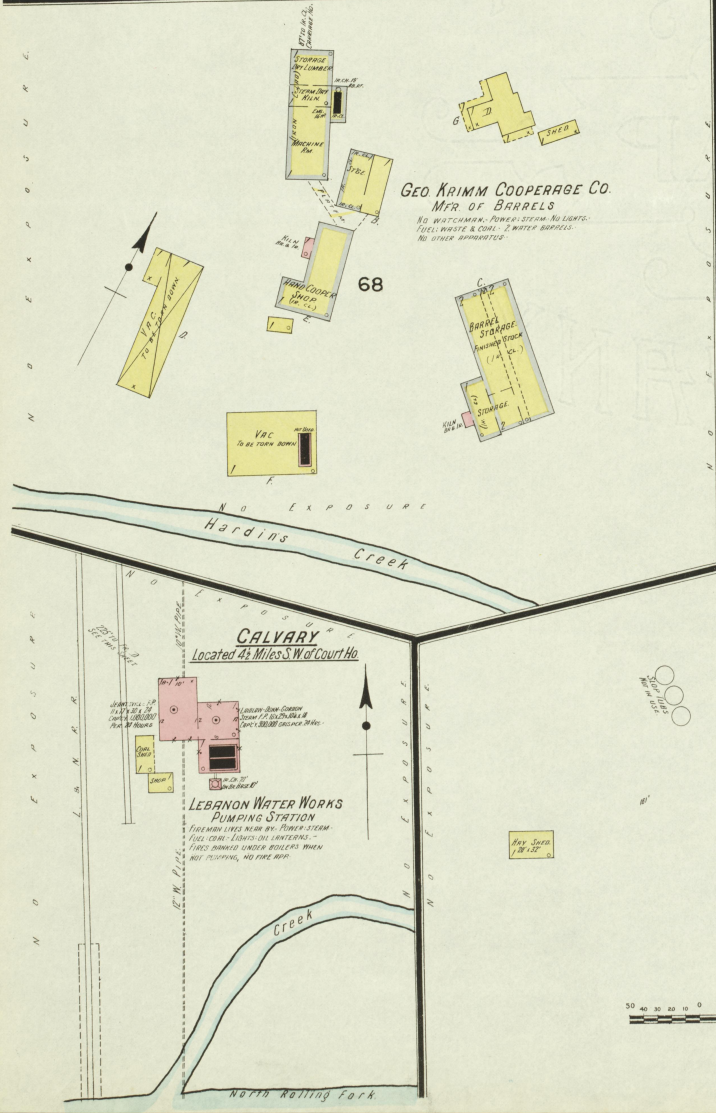
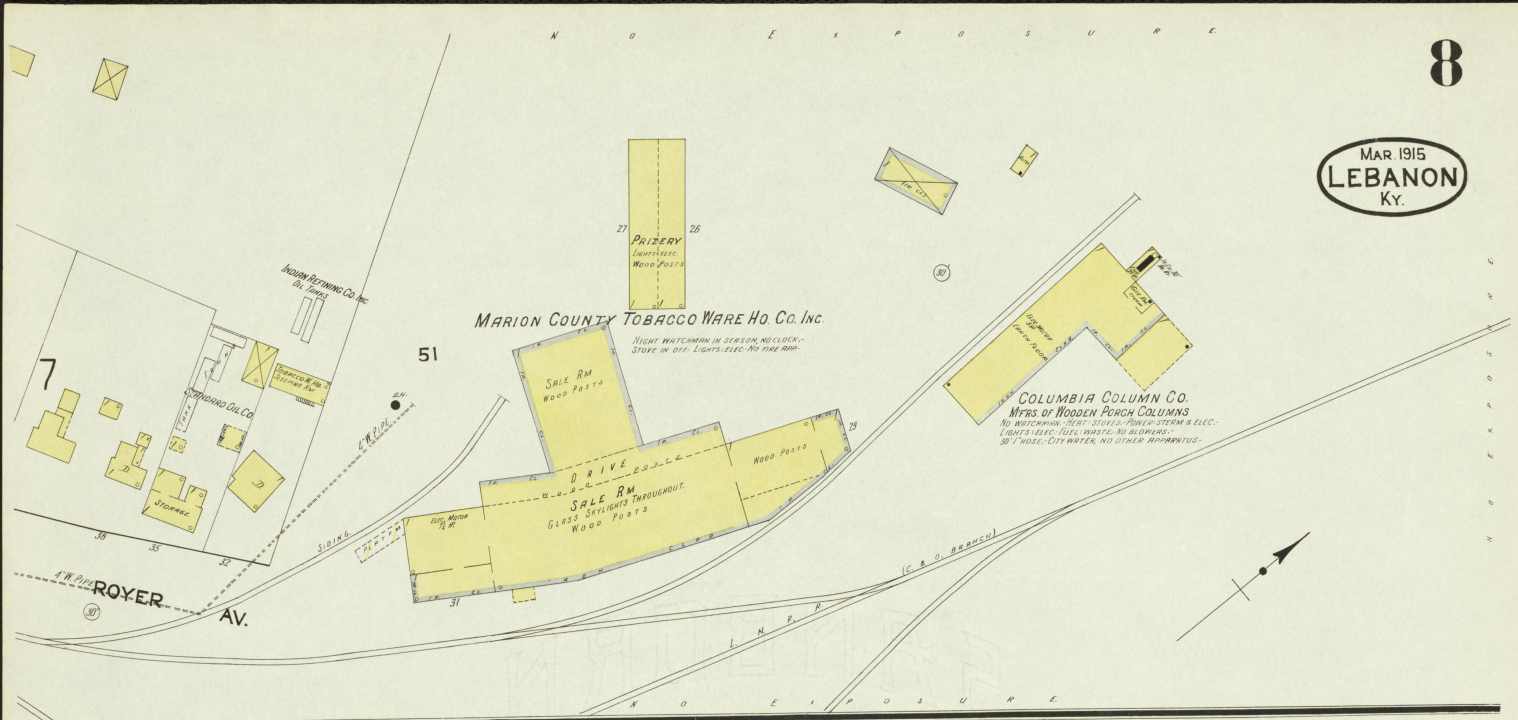
MAIN S

22

J. C. S. M. S.
MONUMENTAL WORKS
112 1/2 W. MAIN ST.
LEBANON, KY.
EST. 1880
MONUMENTS, GRAVES, HEADSTONES
AND ALL KINDS OF STONEMASONRY
WORK.

NO EXPOSURE

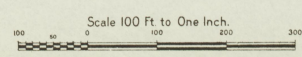
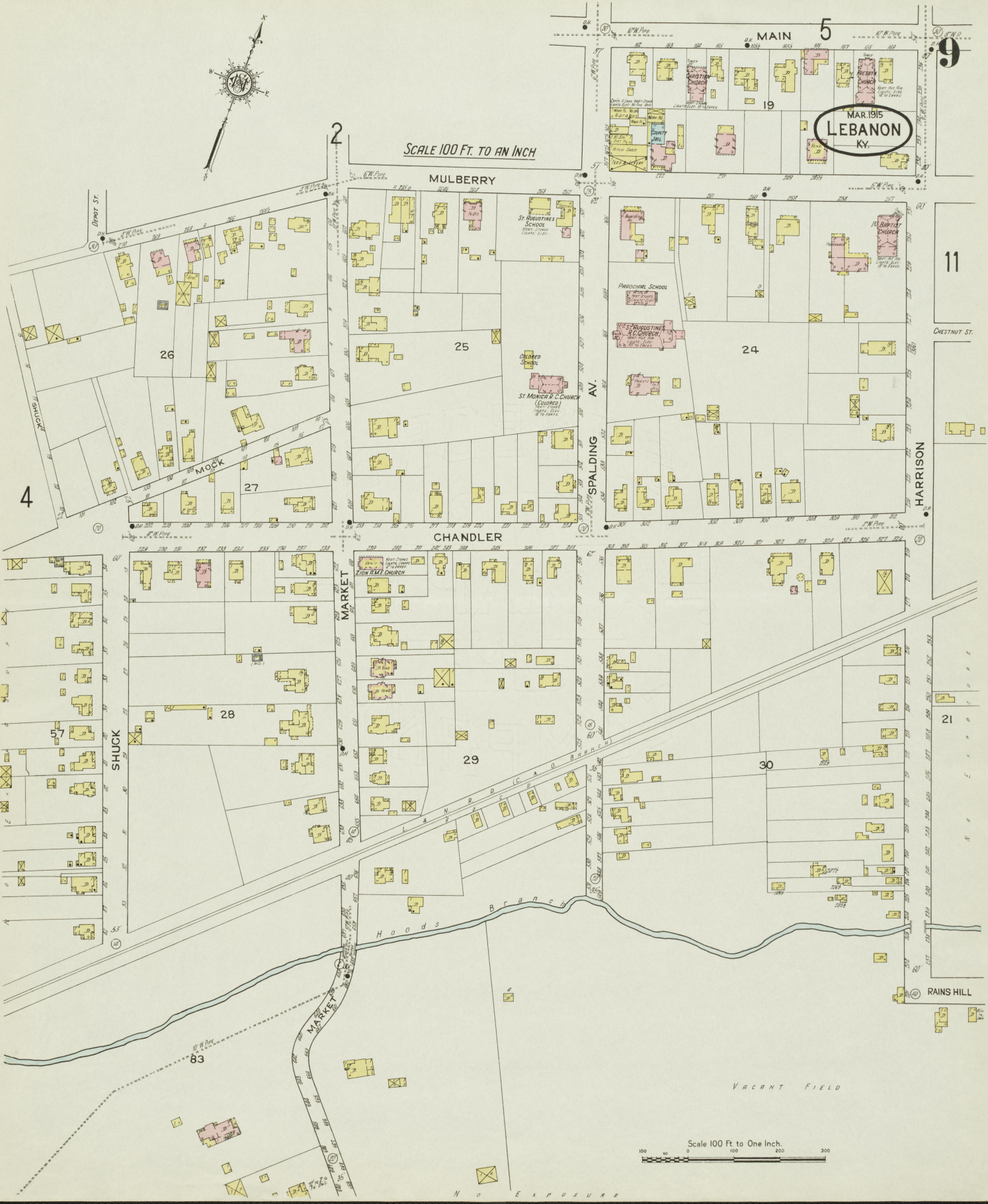






SCALE 100 FT. TO AN INCH

MAR. 1915
LEBANON
KY.



N O E X P O S U R E

SCALE 100 FT. TO AN INCH

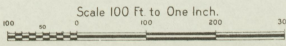
MAR 1915
LEBANON
KY.

77

11

10

Pond

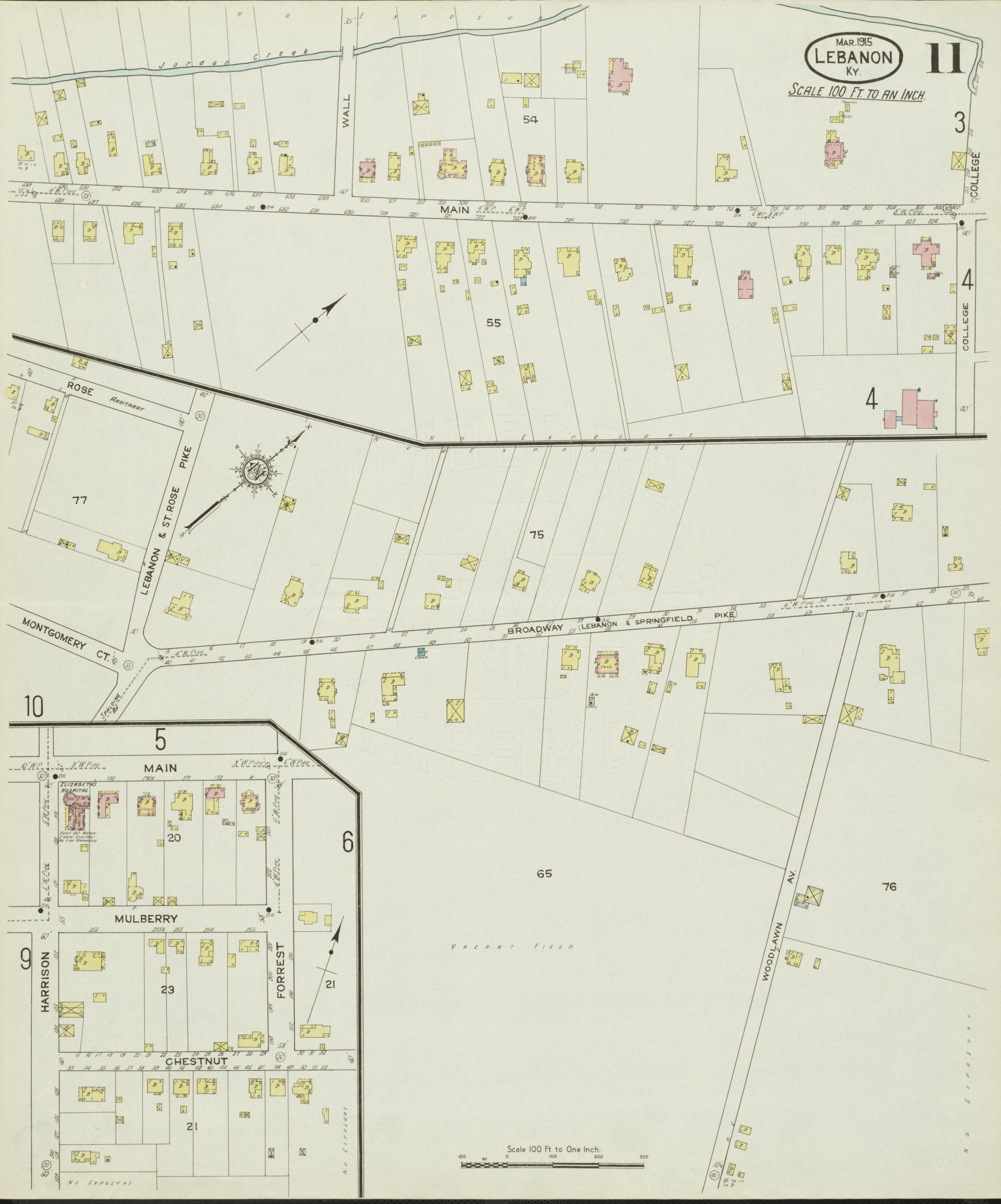


Scale 100 Ft to One Inch.

MAR. 1915
LEBANON
KY.

11

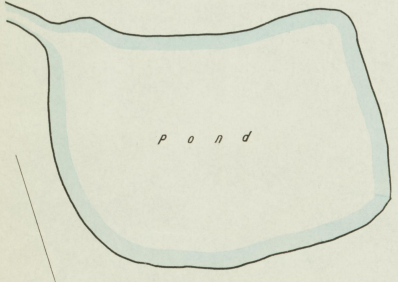
SCALE 100 FT. TO AN INCH.



Y A R C H A N T F I E L D



C. & B. Co.
BONDED DISTILLING No. 299
W. H. M.
BONDED BOTTLING No. 270



CATTLE SHED
100' x 300'
BUILT ON PIERS 5' HIGH

No. 299
CUMBERLAND
DISTILLERY

No. 270
ROLLING FORK
DISTILLERY

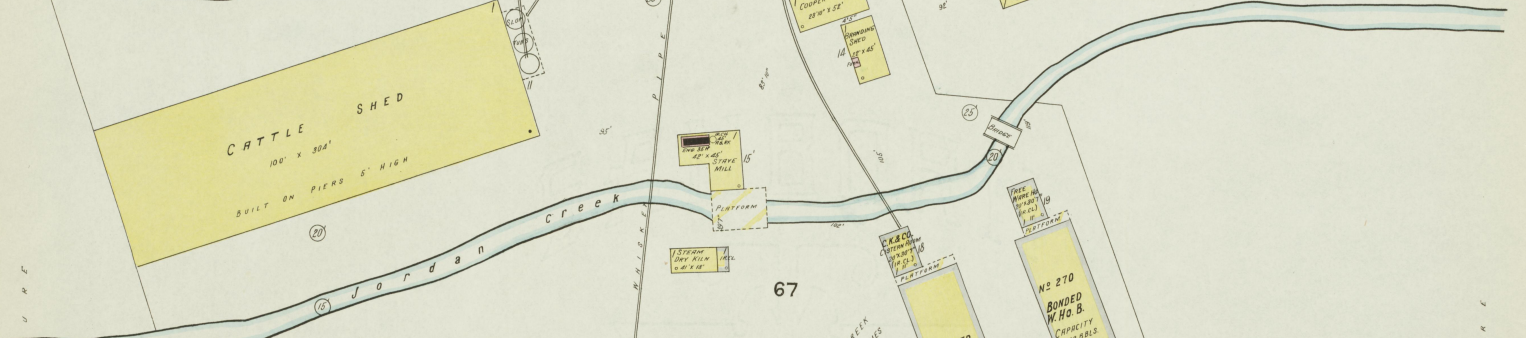
CHAS. KOBERT & Co
Registered Distillery No. 299
5th Dist. Marion Co. Ky.

DISTILLERY RUNNING ONLY & USUAL CAPACITY
AT TIME OF SURVEY.
OPERATED ABOUT 2 MONTHS PER YEAR. PRODUCTION MADE
BOURBON & RYE WHISKEY - DAILY CAPACITY 800 BARRELS -
YIELD 4 GALLONS PER BUSHEL - STEAM DOUBLE

WATHEN, MUELLER & Co.
Registered Distillery No. 270
5th Dist. Marion Co. Ky.

OPERATED ABOUT 6 MONTHS PER YEAR. PRODUCT - SWEET
MASH BOURBON & RYE WHISKEY - DAILY CAPACITY 500
BARRELS - YIELD 4 1/2 GALLONS PER BUSHEL - STEAM DOUBLE

NIGHT WATCHMAN - NO CLOCK - POWER - STEAM -
LIGHTS - ELECTRIC - FUEL - COAL - HEAT - WASTES IN
DITCHES - DISPOSED IN WOODS - DIRECT STEAM
HEAT IN WARE HO. NO. 299 & B. - NO HEAT IN WARE
HO. NO. 270 - STEAM HEAT IN DISTILLERIES &
BOTTLING HO. - NO FIRE APPARATUS -



67

GRADUAL SLOPE TO CREEK
NO GOOD DRAINAGE DITCHES

BONDED W. Ho. No. 299
CAPACITY 7500 BBL.
PATENT RACKS 12 TIERS HIGH
CORN IN ALL SIDES
163' x 55'

No. 270
BONDED
W. Ho. B.
CAPACITY 5000 BBL.
PATENT RACKS
12 TIERS HIGH
CORN IN ALL
SIDES
161' x 100'

BONDED W. Ho. C. No. 270
CAPACITY 10368 BBL.
PATENT RACKS 12 TIERS HIGH
CORN IN ALL SIDES
163' x 55'

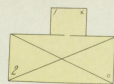
BONDED W. Ho. A. No. 270
CAPACITY 10368 BBL.
PATENT RACKS 12 TIERS HIGH
CORN IN ALL SIDES
163' x 55'

MAIN

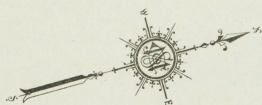


68

Scale of Feet
0 50 100 150



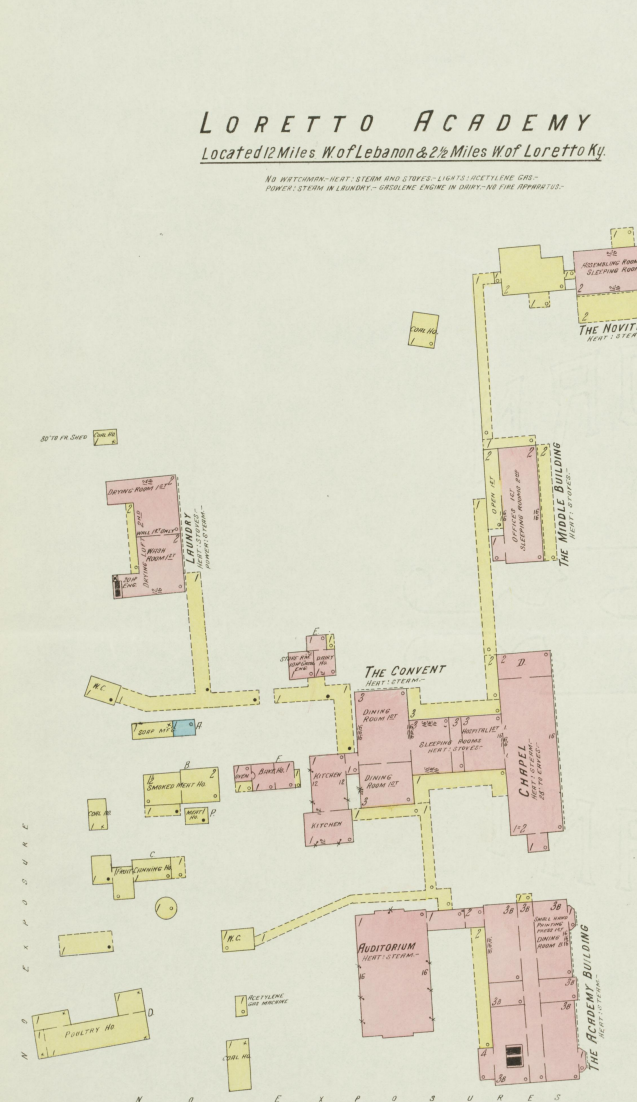
N O E X P O S U R E



LORETTO ACADEMY

Located 12 Miles W of Lebanon & 2 1/2 Miles W of Loretto Ky.

NO WATCHMAN-HEAT-STEAM AND STAPES-LIGHTS-ACETYLENE GAS-POWER; STEAM IN LAUNDRY-GASOLINE ENGINE IN DURY-NO FIRE APPARATUS-

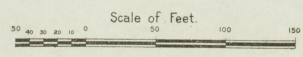
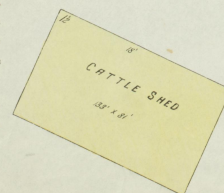


R. CUMMINGS & Co., Inc.

FORMERLY RICHARD CUMMINGS
Also BALLARD & LANCASTER
Registered Distillery No. 357-5th District, Marion Co., Ky.

PRODUCT: Sour Mash Bourbon & Rye Whiskey
MASH CAPACITY: 550 GALS PER DAY, 12000 4/5 GALS PER DAY.
RUN ABOUT 5 MONTHS PER YEAR.
STEAM: DOUBLE.

NEED WATCHMAN IN RUNNING SEASON-NO FLOOD-POWER SYSTEM-HEAT-STEAM IN YEAST ROOM, DISTILLING AND BUFFING-NO HEAT IN WARE-HOUSE-LIGHTS: CINCINNATI & KANSAS-LANTERNS IN WARE-HOUSE-ROCKING LANTERNS IN DISTILLERY-FUEL COIL-THE PAUL & RALS IN DISTILLERY-D. CHAS. CHAMBERLAIN, DISTILLER



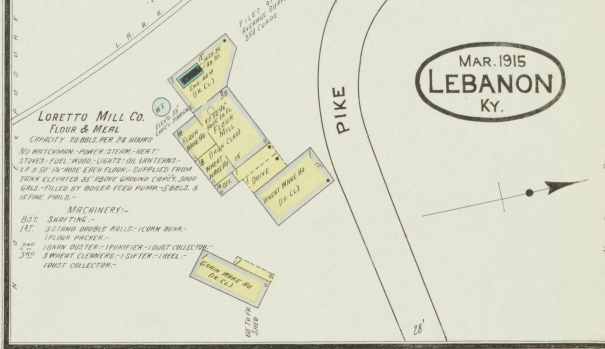
N O E X P O S U R E

13

LORETTO

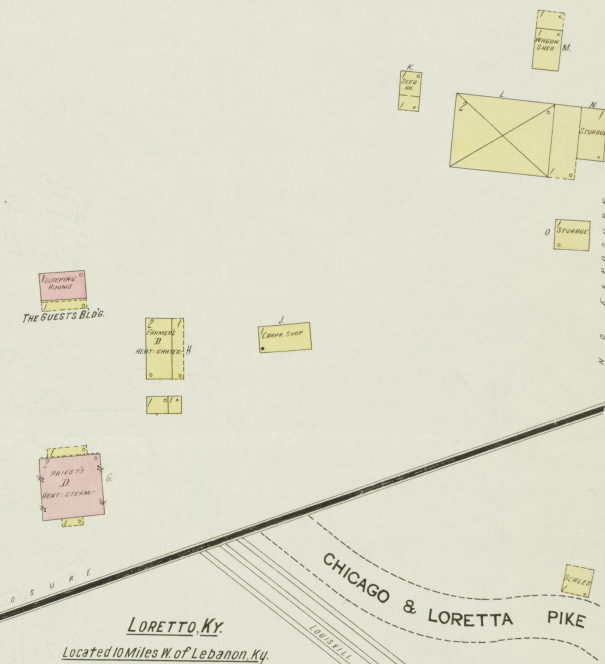
Located 10 Miles W of Lebanon

MAR. 1915
LEBANON
KY.



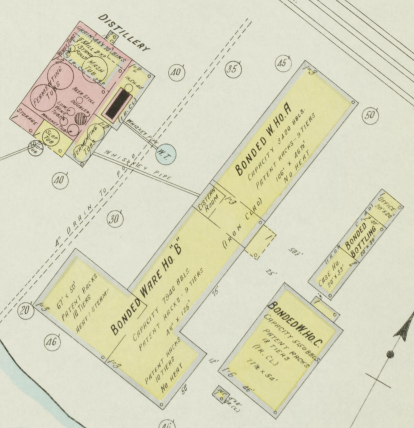
LORETTO MILL CO. FLOUR & MEAL
CAPACITY: 75 BAGS PER 24 HOURS
NO WATCHMAN-POWER-STEAM-HEAT-STEAM-FUEL, WIND-LIGHTS: OIL LANTERNS-4 1/2 2 1/2 IN. HOLE SAW FLUOR-SUPPLIED FROM YORK ELEVATED BY IRON WINDING CABLE, 2000 GALS-FILLED BY BULLER FEED PUMP-SCREWS & WINDING PUMPS-

MACHINERY:-
1ST. SHAFING-
1ST. SECOND DOUBLE PULLS-10000 BUSH-
FLOUR PRICKER-
2ND. 10000 BUSH-100000-100000 COLLECTOR-
3RD. 5 WHEAT CLEANERS-1 SIFTER-1 LABEL-
10000 COLLECTOR-

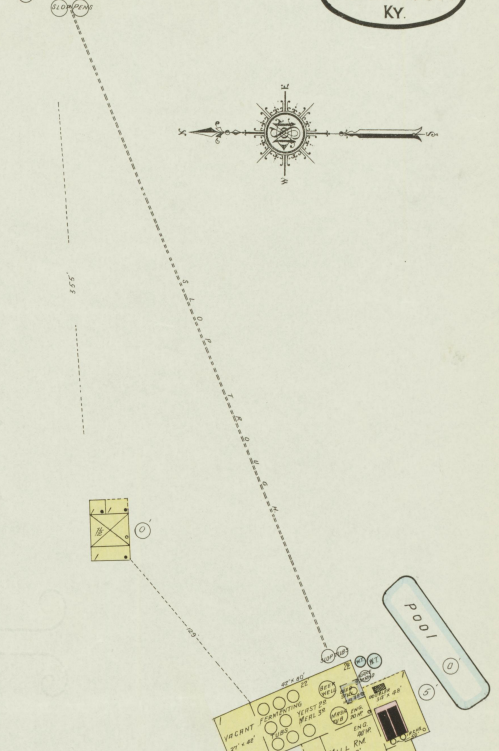
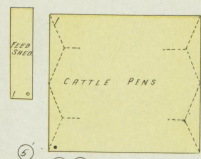
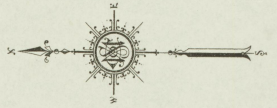


LORETTO KY.

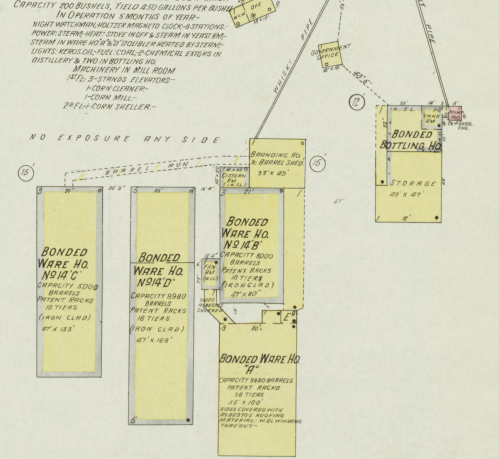
Located 10 Miles W of Lebanon Ky.



MAR. 1915
LEBANON
KY.

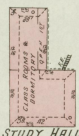
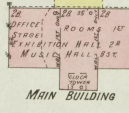
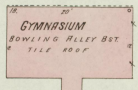
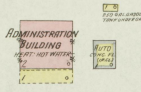


THE BROWN FORMAN DISTILLING CO. INC.
FORMERLY B. F. MATTINGLY
Registered Distillery No. 14-5th District, Marion Co., Ky.



PRODUCT: BOURBON, BRANDY, MAID, SOUR MASH
CAPACITY: 200 BARRELS, YIELD 250 GALLONS PER BUSHEL
IN DISTILLATION 8 MONTHS OF YEARS
NIGHT WATER MAIN, HOTTER, WARMER, COOL, & STATIONS
STEAM IN WORK AND IN DISTILLATION HEATER & CONDENSING
LIGHTS: KEROSENE, OIL, COAL, & CHEMICAL EXTRACTS IN
DISTILLATION & TANKS IN BOTTLING HO.
MACHINERY IN MILL ROOM
ICE: DISTILLATION & STORAGE
CORN CRUSERS
CORN MILL
24 1/2" CORN SHELLER
NO EXPOSURE ANY SIDE

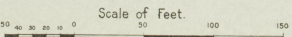
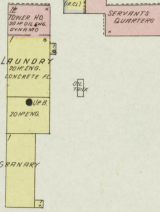
Located near St. Marys, 1/2 Miles W of St. Marys College
& 5 Miles W of Lebanon

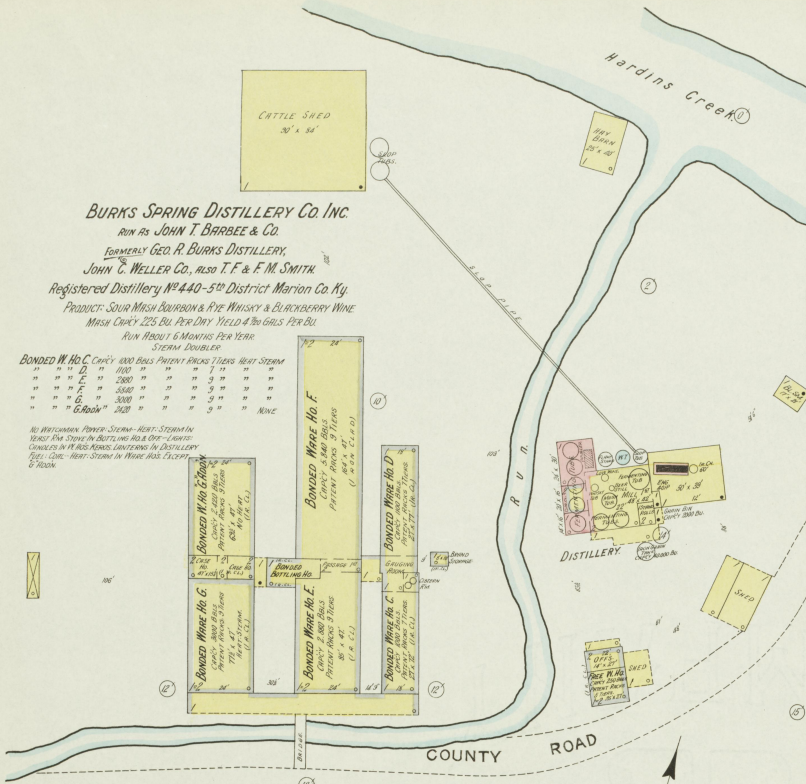


ST. MARYS COLLEGE

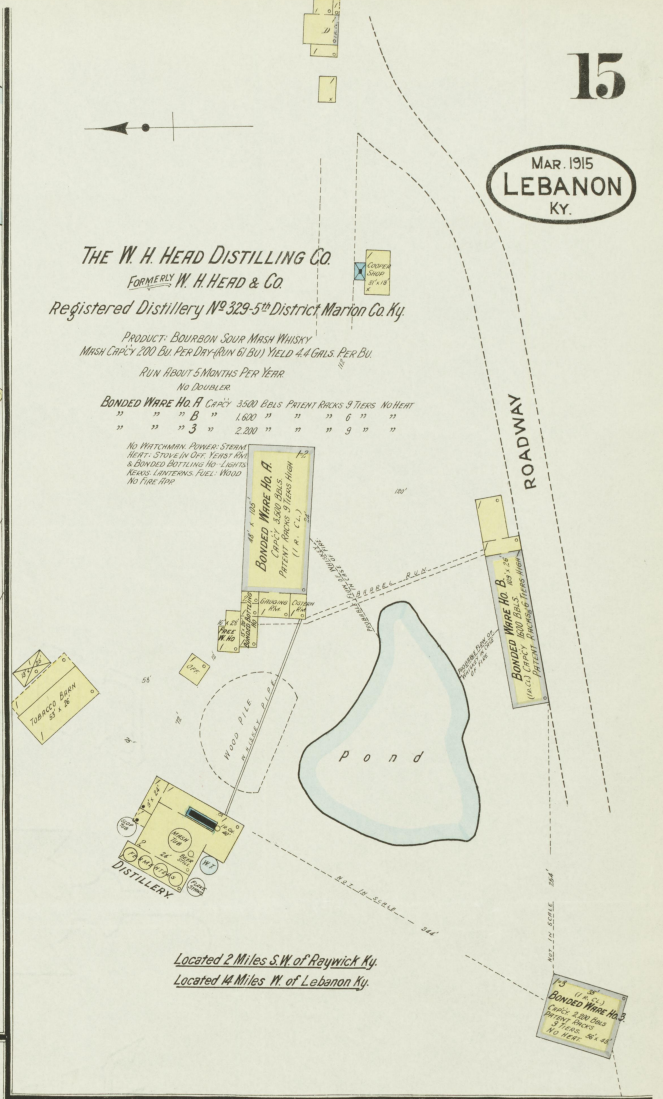
NO WATCHMAN-BEST STEAM IN ALL BUILDINGS-LIGHTS
ELECTRIC WATER SUPPLY PUMPED FROM RESERVOIR TO
TANK 8 MILE W OF COLLEGE-CAPACITY 1000 GALLONS
PRESSURE AT LAMPING 60 LBS.-BLENDING CHEMICAL
EXTINGUISHERS IN MAIN BUILDING

St. Marys
Located 5 Miles W of Lebanon
NO EXPOSURE ANY SIDE



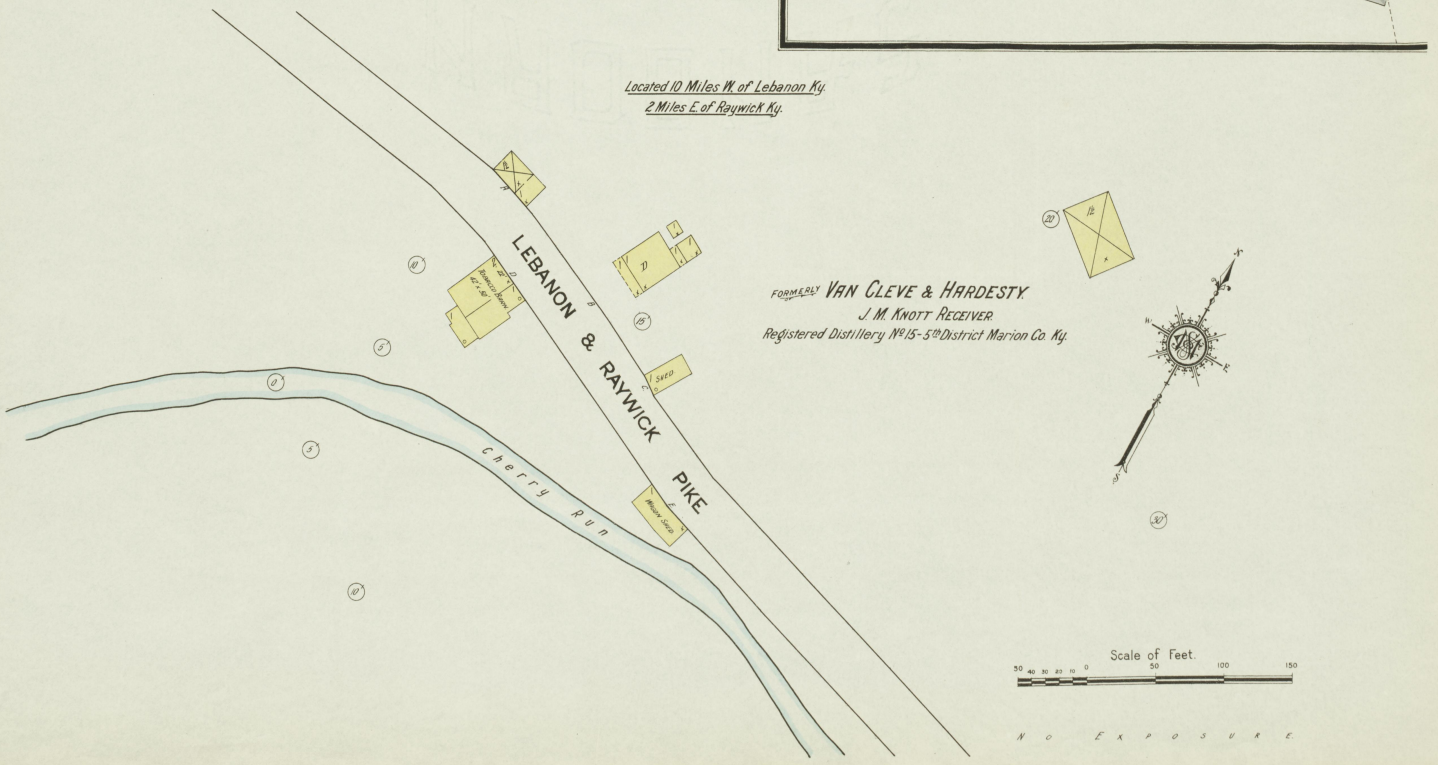


Located 10 Miles N.W. of Lebanon Ky.
 3 Miles E. of Loretto Ky.



Located 2 Miles S.W. of Raywick Ky.
 Located 4 Miles W. of Lebanon Ky.

Located 10 Miles W. of Lebanon Ky.
 2 Miles E. of Raywick Ky.



MAR 1915
LEBANON
Ky.

THE DANT DISTILLERY CO., INC. OWNERS
The DANT DISTILLERY CO. FORMERLY RUN BY JESSE MOORE HUNT CO.
Registered Distillery No. 169 DISCONTINUED
5th District, Marion Co. Ky.

PRODUCT: SOUV. MASH BOURBON WHISKY
MASH CAPCY 250 BU PER DAY. YIELD 40 GALS PER BU.
OPERATED ABOUT 5 MONTHS PER YEAR. STEAM DOUBLERS.

NO WATCHMAN. NO CLOCK. POWER. STEAM
HEAT. STEAM IN WARE HOSE. R. B. & C. LIGHTS
DISTILLING HOSE. WARE HOSE. WARE HOSE. WARE
HOSE. WARE HOSE. WARE HOSE. WARE HOSE.
DISTILLERY FUEL. COIL. 3 CHEM. EXTER.
DISCONTINUED.

BONDED W. Ho. No. 2
Disty No. 169
CAPCY. 5000 BALS.
PATENT BRKS. 10 STKS.
HEAT. STEAM.

BONDED W. Ho. No. 3 - Disty No. 169
FORMERLY
BONDED W. Ho. No. 1 - Disty No. 170
FORMERLY
BONDED W. Ho. No. 4 - Disty No. 169
FORMERLY
BONDED W. Ho. No. 2 - Disty No. 170
FORMERLY

Disty No. 169 - BONDED W. Ho. No. 1 - CAPCY. 5000 BALS. PATENT BRKS. 10 STKS. HEAT. STEAM
FORMERLY - Disty No. 170 - CAPCY. 5000 BALS. PATENT BRKS. 10 STKS. HEAT. STEAM

DANT STATION, KY
Located 14 Miles W of Lebanon, Ky.

THIXTON, MILLETT & CO.
FORMERLY
MARY JANE BLAIR DISTILLERY CO.
FORMERLY **BLAIR, OSBORNE & BALLARD**
Registered Distillery No. 11 - 5th District Marion Co. Ky.

PRODUCT: SOUV. MASH BOURBON WHISKY
MASH CAPCY 105 BU PER DAY
YIELD 40 GALS PER BU.
OPERATED ABOUT 5 MONTHS PER YR.
NO DOUBLER.

NO WATCHMAN. POWER. STEAM. HEAT. STEAM IN OFF &
VERET. STEAM IN WARE HOSE. R. B. & C. LIGHTS.
KEROSE LAMP IN DISTILLERY. COIL. 3 LEMPS IN
WARE HOSE. FUEL. COIL. 3 CHEM. EXTER.

BONDED W. Ho. A CAPCY. 500 BALS. PATENT BRKS. 5 STKS. HEAT. STEAM
- B - 2500 - - - 10 - - -
- C - 2500 - - - 10 - - -
- D - 2500 - - - 10 - - -

ALL W. HOSES ARE SUBJECT TO COMMON WHISKY FIRE LAW.

CHICAGO KY
Located 12 Miles W of Lebanon, Ky.

BONDED W. Ho. D
CAPCY. 500 BALS.
PATENT BRKS. 5 STKS.
HEAT. STEAM.

BONDED W. Ho. C
CAPCY. 500 BALS.
PATENT BRKS. 5 STKS.
HEAT. STEAM.

BONDED W. Ho. B
CAPCY. 500 BALS.
PATENT BRKS. 5 STKS.
HEAT. STEAM.

BONDED W. Ho. A
CAPCY. 500 BALS.
PATENT BRKS. 5 STKS.
HEAT. STEAM.

BONDED BOTTLING HO.
11 x 11
5' x 3'

BONDED W. Ho. B
CAPCY. 500 BALS.
PATENT BRKS. 5 STKS.
HEAT. STEAM.

SMITH DISTILLING CO. INC.
FORMERLY **FARM SPRINGS DISTILLING CO.**
FORMERLY **SMITH DISTILLERY CO.**
Registered Distillery No. 174, 5th District, Marion Co. Ky.

PRODUCT: SOUV. MASH BOURBON WHISKY
MASH CAPCY. 70 BU PER DAY. YIELD 40 GALS. PER BU.
RUN ABOUT 5 MONTHS PER YR.
NO DOUBLER.

NO WATCHMAN. POWER. STEAM. HEAT. STEAM IN WARE HOUSES
IN OFFICE & VERET. LIGHTS. COILS IN WARE HOSE. KEROSE
LAMPERS IN DISTILLERY. FUEL. COIL. NO FIRE ROPS.

CHICAGO KY
Located 12 Miles W of Lebanon, Ky.

