

Population 7000. Prevailing Winds S.W.

WATER FACILITIES.

Water works owned by private company. Water supply from Ohio River drawn by one DeLaval centrifugal pump...

FIRE DEPARTMENT.

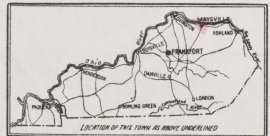
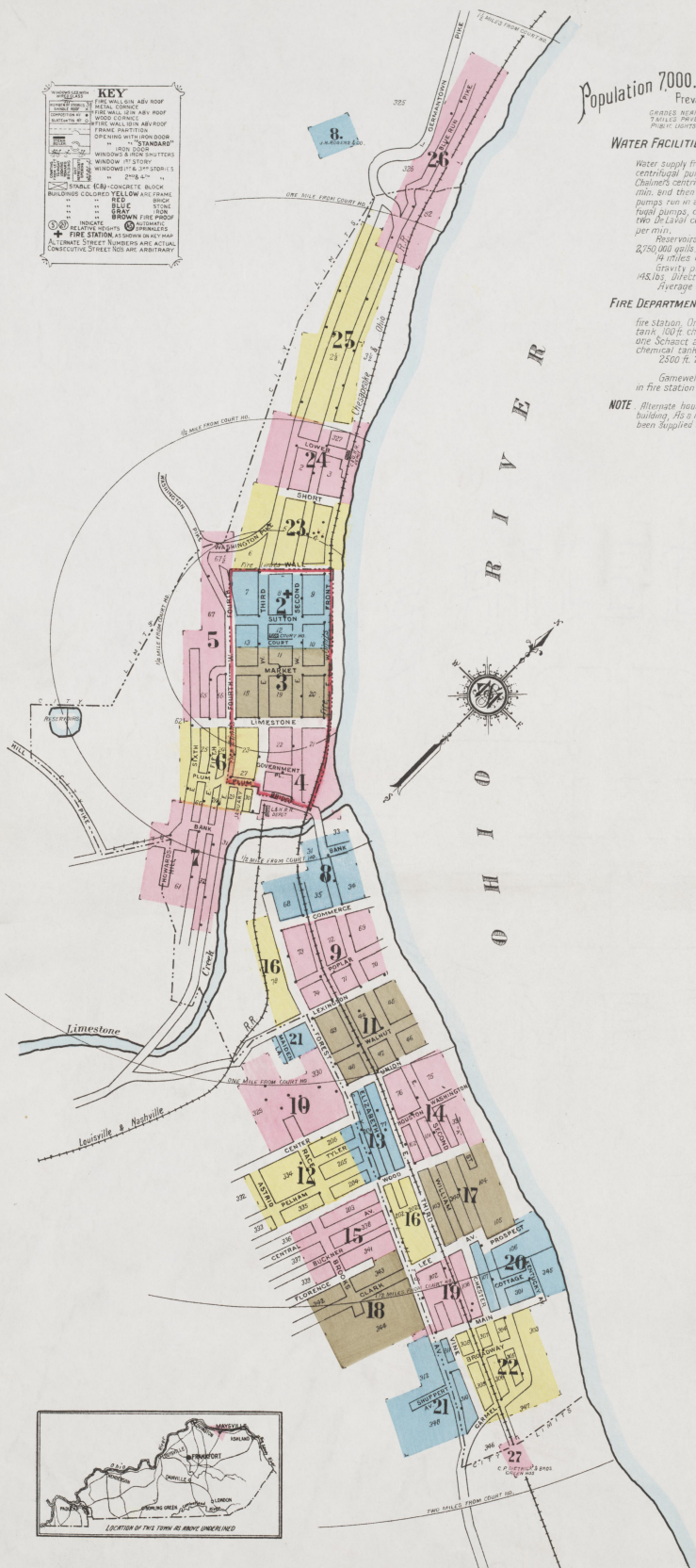
Fully paid One chief and five men. One fire station. One Knox auto. truck with 40 gal. chemical tank...

Ganewell fire alarm system 22 boxes. Headquarters in fire station. Alarms sent by telephone.

NOTE: Alternate house numbers are actual and are those from city building. As a matter of convenience consecutive numbers have been supplied to buildings not having actual numbers.

MAYSVILLE KENTUCKY Sanborn Map Company New York Oct. 1926

KEY: Symbols for roof types, window styles, fire stations, and other architectural features.



Scale 800 feet to one inch (Approx.)

INDEX

INDEX table listing streets (A-Z) and various buildings, warehouses, and institutions with their corresponding page numbers.

\* Indicates only one side of Street shown.



2

2

W. FRONT

OCT 1926  
MAYSVILLE  
KY.

W. 2ND ST.

W. 3RD ST.

W. 4TH ST.

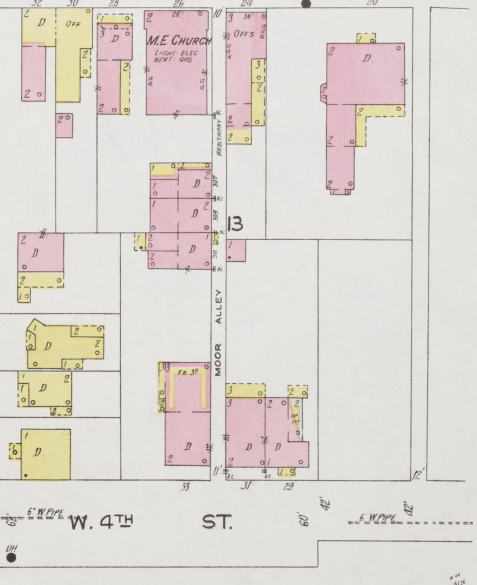
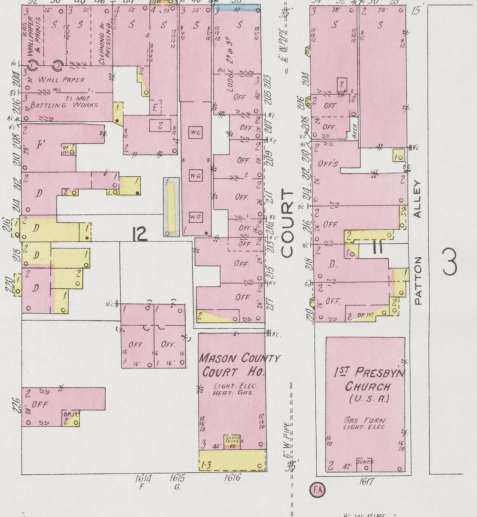
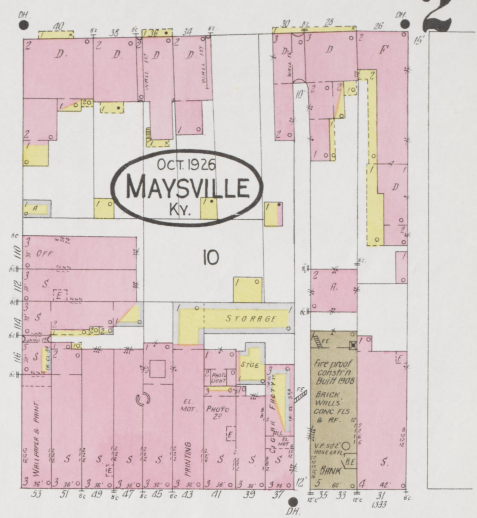


23

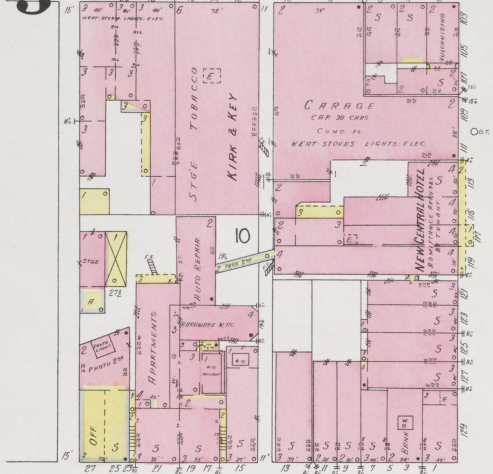
3

7

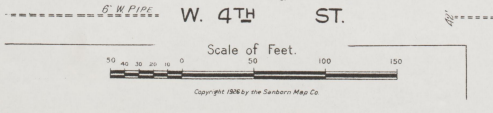
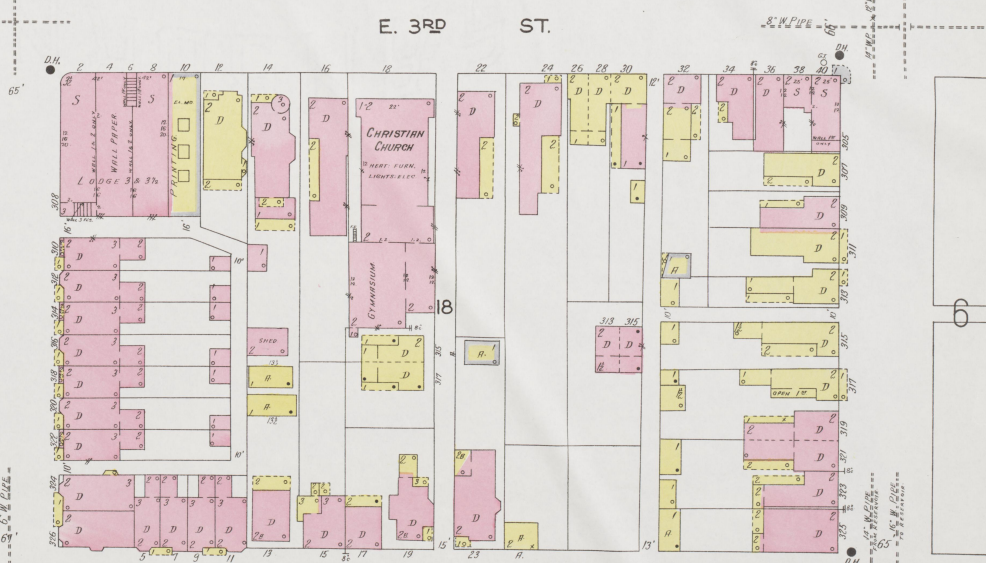
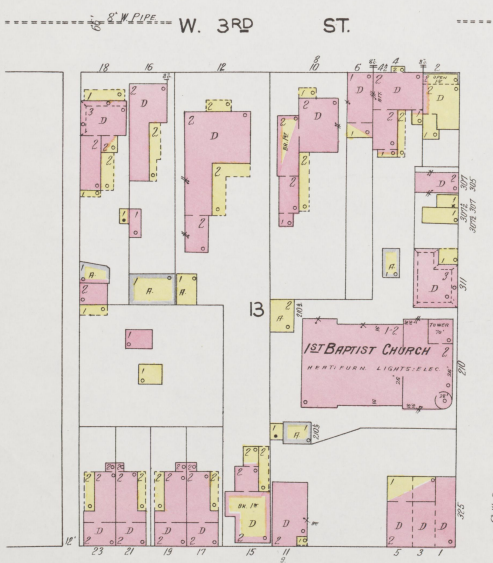
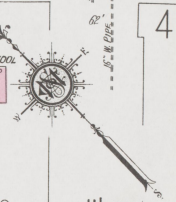
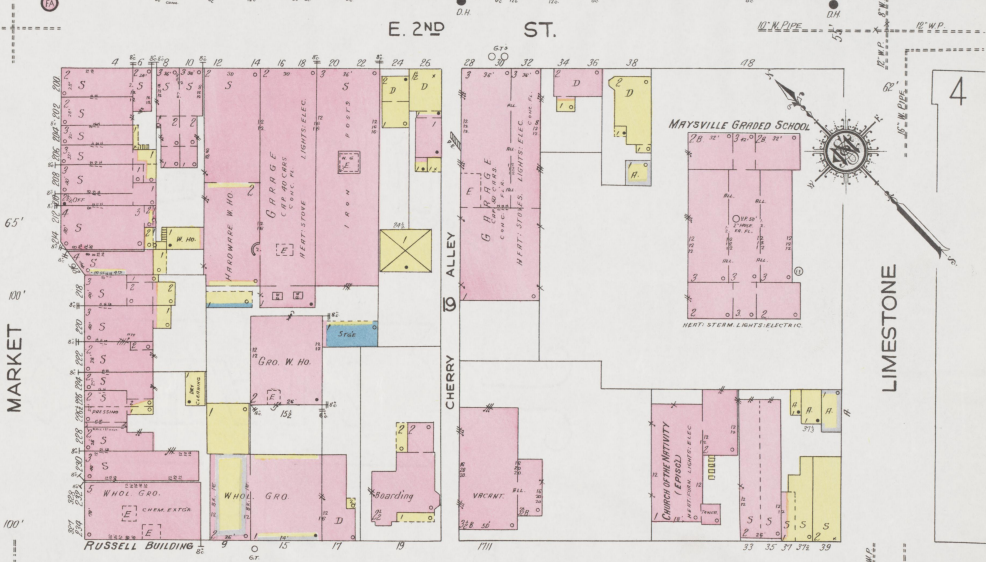
13





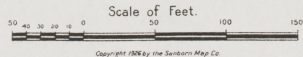


OCT. 1926  
MAYSVILLE  
Ky.





LIMESTONE



Copyright 1926 by the Sanborn Map Co.

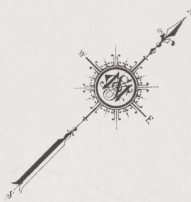
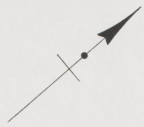


5

NO EXPOSURE

OCT 1926  
MAYSVILLE  
KY.

5 (2877)



5

Scale of Feet. 0 50 100 150

6

3

Copyright 1926 by the Standard Map Co



OCT. 1926  
MAYSVILLE  
KY.

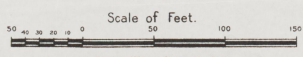
6

5

3

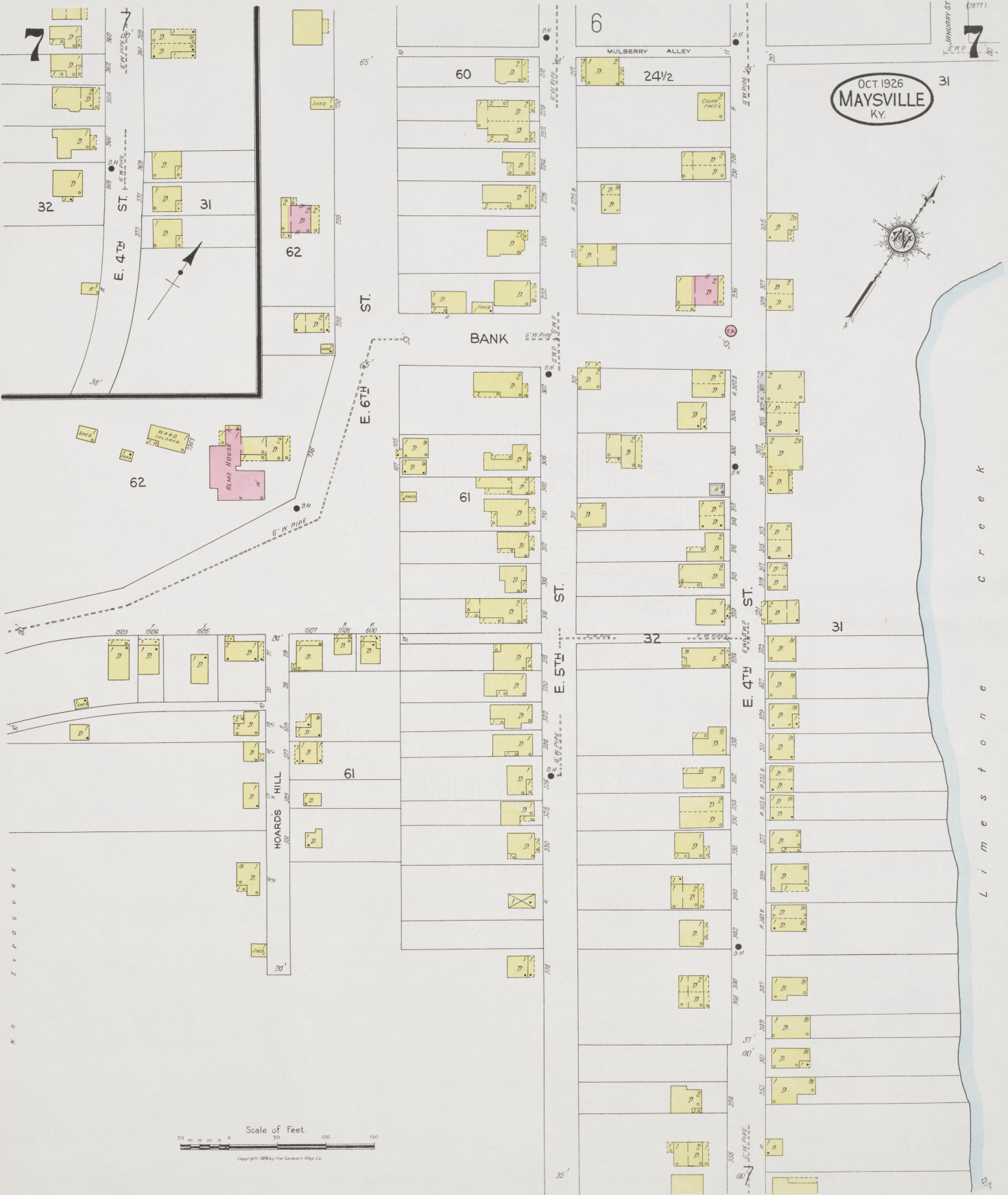
6

LIMESTONE



Copyright 1926 by the Sanborn Map Co.





OCT. 1926  
MAYSVILLE  
KY.



Scale of Feet.  
0 50 100 150  
Copyright 1926 by the Sanborn Map Co.

Limestone Creek

NO EXPOSURE



8

8

OCT 1925  
MAYSVILLE  
KY.

OHIO RIVER BEYOND

E. FRONT

BURLEY TOBACCO GROWERS ASSN.  
RECEIVING WARE HO.  
WATCHMAN NO CLOCK LIGHT ELEC NO HEAT  
WOOD FLOOR

PLANKING MILL  
NO LIGHTS NO HEAT  
POWDER 605

LIMESTONE  
LUMBER

MORRISON ALLEY

34

LUMBER SHED

E. 2ND ST.

STORAGE

HALL ALLEY

35

J. F. HARDMAN  
GEN'L CONTRACTOR  
LIGHT & POWER ELEC HEAT  
W.C.

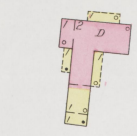
E. 3RD C. & O. R. R. ST.

STRAWBERRY ALLEY (CALAIS ALLEY)

68

FOREST

AV.



33



BANK

32

30

303

302

307

311

313

315

317

319

321

323

325

329

333

335

337

341

343

D.H.

12" W. PIPE

12" W. PIPE

12" W. PIPE

12" W. PIPE

12" W. PIPE

12" W. PIPE

12" W. PIPE

12" W. PIPE

12" W. PIPE

12" W. PIPE

12" W. PIPE

12" W. PIPE

12" W. PIPE

12" W. PIPE

12" W. PIPE

12" W. PIPE

12" W. PIPE

12" W. PIPE

12" W. PIPE

12" W. PIPE

12" W. PIPE

12" W. PIPE

12" W. PIPE

12" W. PIPE

12" W. PIPE

12" W. PIPE

12" W. PIPE

12" W. PIPE

12" W. PIPE

12" W. PIPE

12" W. PIPE

12" W. PIPE

12" W. PIPE

12" W. PIPE

12" W. PIPE

12" W. PIPE

12" W. PIPE

12" W. PIPE

12" W. PIPE

12" W. PIPE

12" W. PIPE

12" W. PIPE

12" W. PIPE

12" W. PIPE

12" W. PIPE

12" W. PIPE

12" W. PIPE

12" W. PIPE

12" W. PIPE

12" W. PIPE

12" W. PIPE

12" W. PIPE

12" W. PIPE

12" W. PIPE

12" W. PIPE

12" W. PIPE

12" W. PIPE

12" W. PIPE

12" W. PIPE

12" W. PIPE

12" W. PIPE

12" W. PIPE

12" W. PIPE

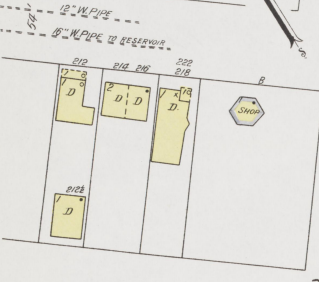
12" W. PIPE

12" W. PIPE

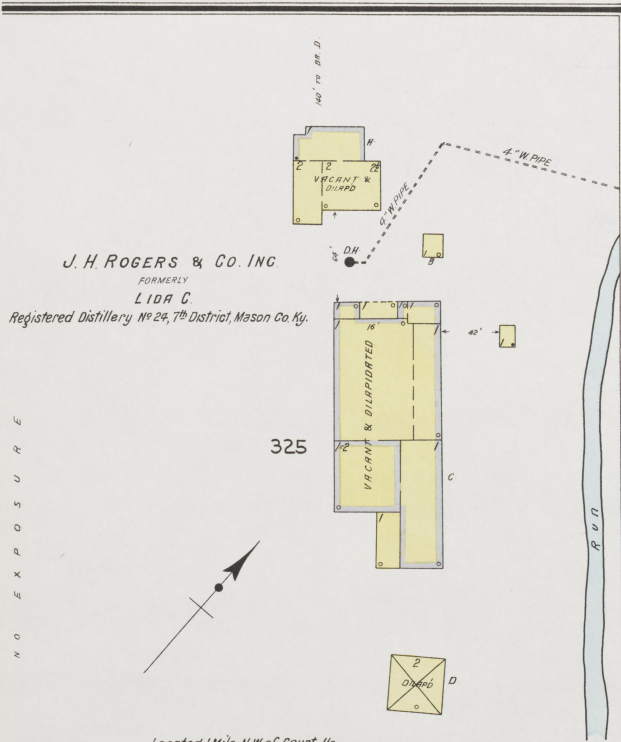
12" W. PIPE

12" W. PIPE

12" W. PIPE



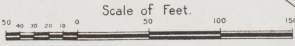
31



J. H. ROGERS & Co. INC.  
FORMERLY  
LIDA C.  
Registered Distillery No 24, 7th District, Mason Co. Ky.

325

Located 1 Mile N.W. of Court Ho.



Scale of Feet.

Copyright 1925 by the Sanborn Map Co.

NO EXPOSURE

16



9

E. FRONT

OHIO RIVER

BEYOND

9

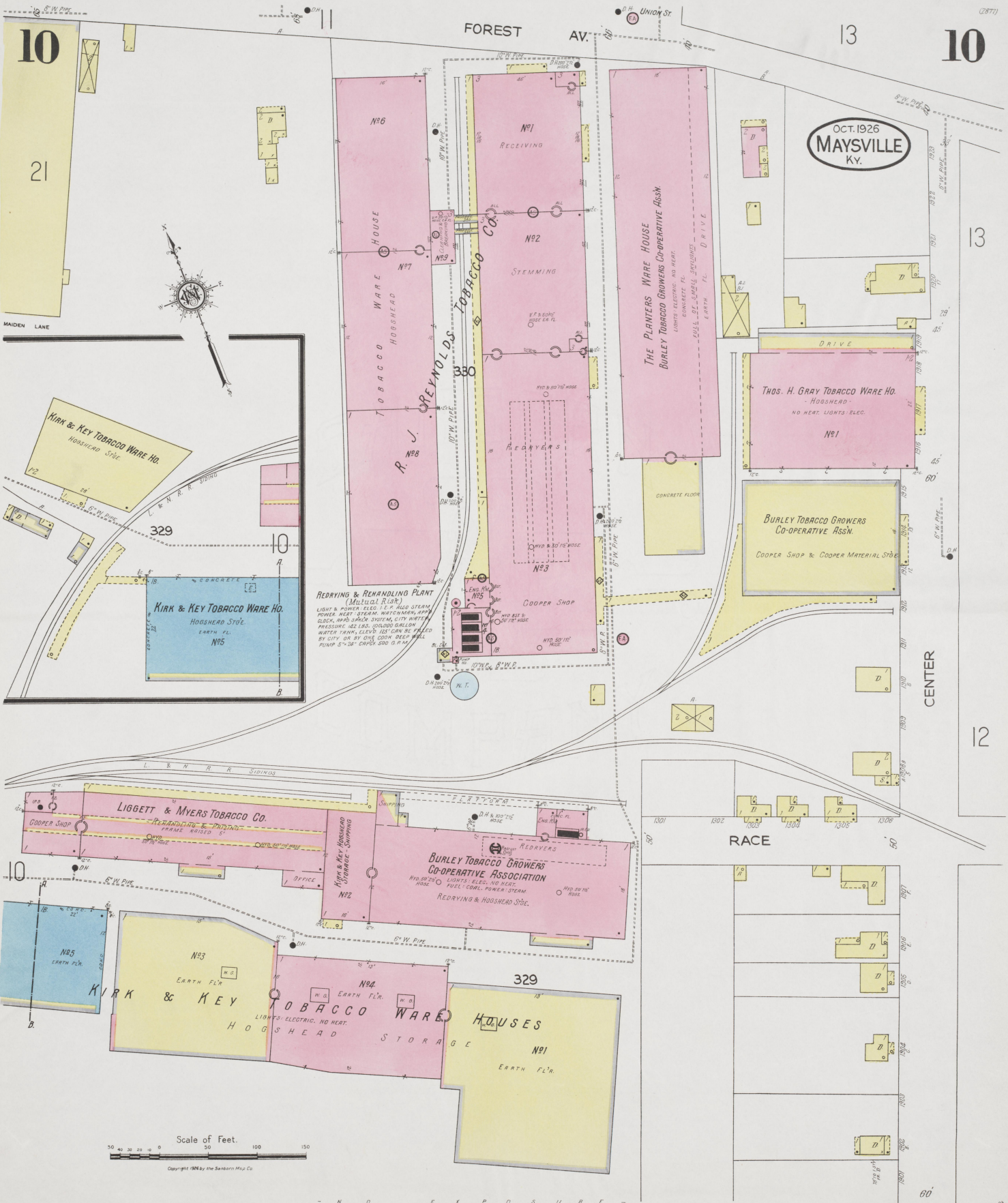
OCT. 1926  
MAYSVILLE  
KY.



Scale of Feet.  
0 50 100 150

Copyright 1926 by the Standard Map Co.

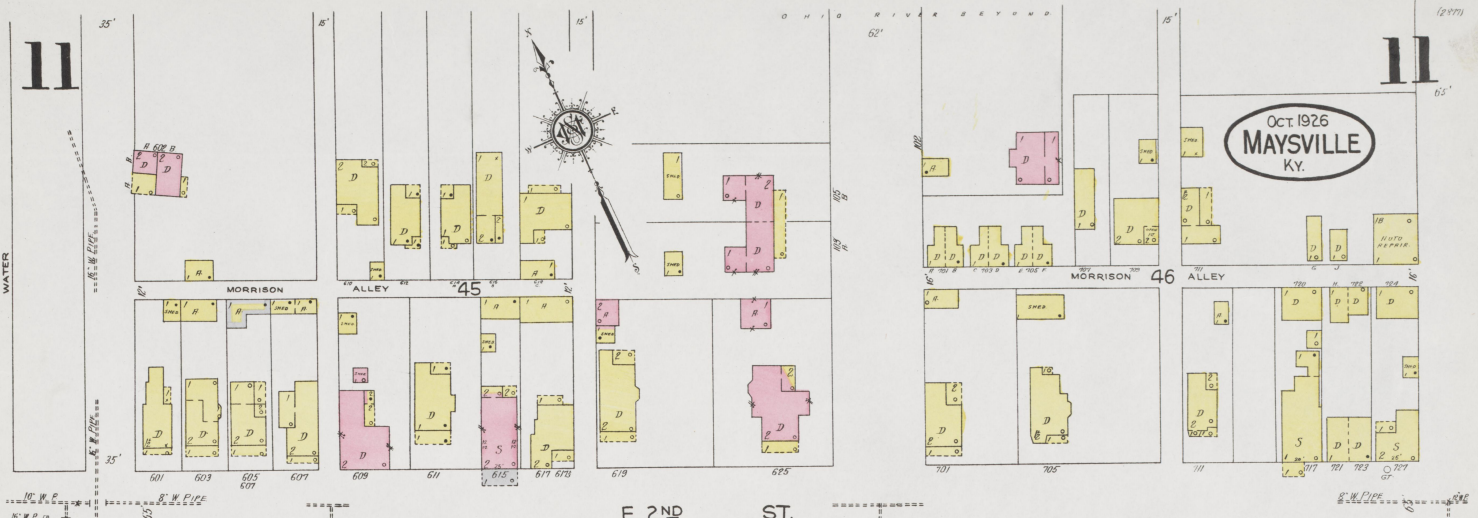






11

11



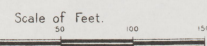
E. 2ND ST.



E. 3RD ST.



FOREST AV.



Copyright 1926 by the Sanborn Map Co.

21

10



OCT. 1926  
MAYSVILLE  
KY.

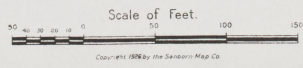
12

12

10



15



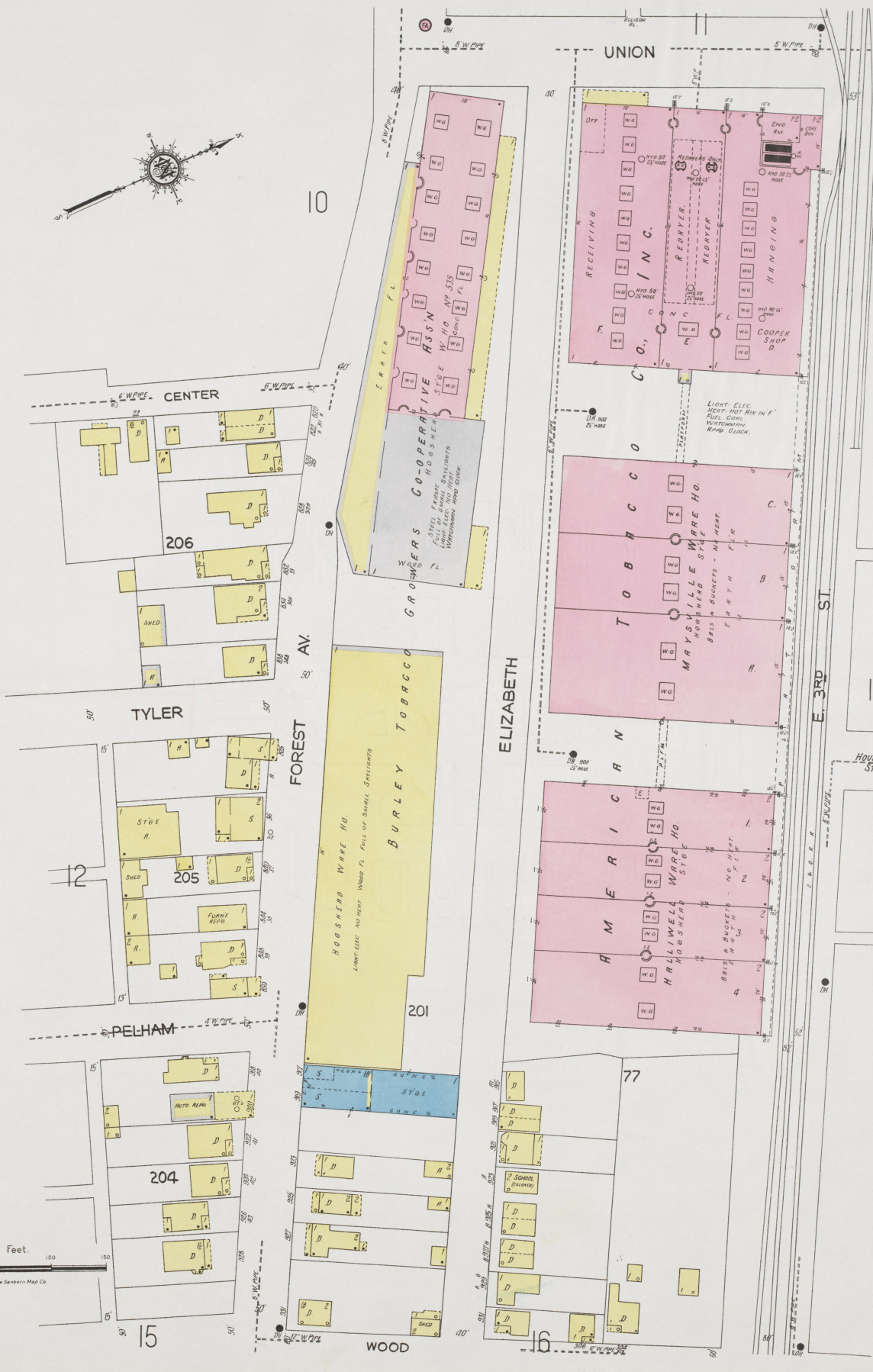
BROOKS ST.





10

OCT 1926  
MAYSVILLE  
KY



206

TYLER

12

205

PELHAM

204

15

201

WOOD

ELIZABETH

UNION

CO.

RECEIVING

TOBACCO

MAYSVILLE WARE HO.

AMERICAN

HALLIWELL WARE HO.

77

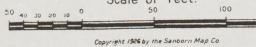
16

14

HOUSTON ST.

E 3RD ST.

Scale of Feet.



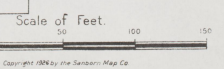
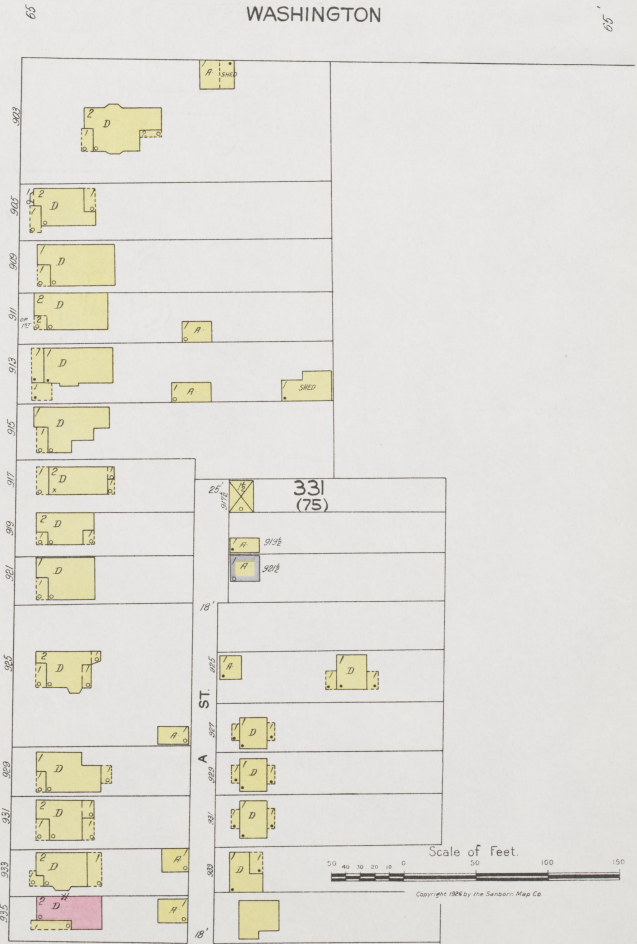
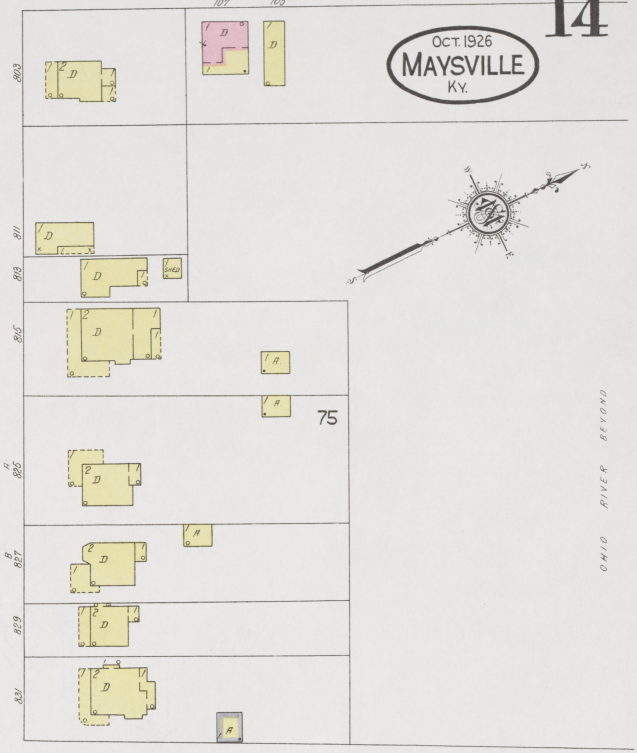
Copyright 1926 by the Sanborn Map Co.



Oct. 1926  
MAYSVILLE  
Ky.



OHIO RIVER BEYOND



Copyright 1926 by the Sanborn Map Co



15

16

15

13

12

18

WOOD

RACE ST.

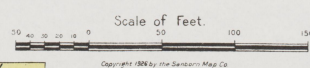
FOREST AV.

CENTRAL AV.

BUCKNER

BROOKS

FLORENCE



Copyright 1926 by the Searson Map Co



16  
L & N R.R.  
LOCOMOTIVE  
NO. 10

OCT. 1926  
MAYSVILLE  
KY.

16



Scale of Feet.  
0 50 100 150  
Copyright 1926 by the Sanborn Map Co.



17

17

(2617)

OCT. 1926  
MAYSVILLE  
KY.



16

E. 3RD ST.

WILLIAM

E. 2ND ST.

103

340  
(103)

104

105

LEE AV.

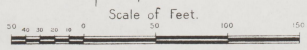
19

CHESTER ST.

PROSPECT

20

20



Copyright 1924 by The Sanders Map Co.



18  
8" W. PIPE

16

19

FOREST AV.

EASTLAND SCHOOL  
MEN'S STRAIN - LOWER FLS.

8" W. PIPE

19

343

15

CLARK

BROOKS

344

WARE HO. No 665.  
COOPERATIVE ASS'N

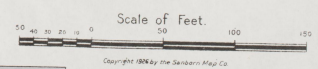
FLORENCE

342

WARE HO No 653  
GROWERS

WARE HO No 652  
TOBACCO

WARE HO No 651 350 x 170  
BURLY



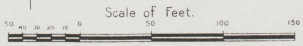
Scale of Feet.

Copyright 1926 by the Sanborn Map Co





OCT 1926  
MAYSVILLE  
Ky.



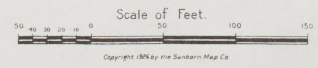
Copyright 1926 by the Standard Map Co.

WATCHMAN 4:00 P.M. CLOCK WEST STEAM LIGHTS 1:00 P.M.  
LEAD PIPES UNDER FLOOR TOWNSHIP SURFACE 10\"/>





OHIO RIVER BEYOND





21

16

19

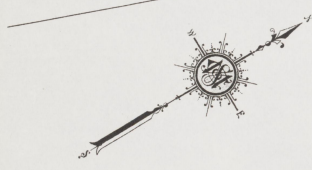
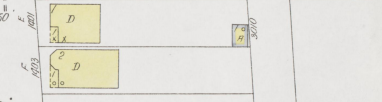
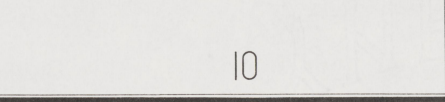
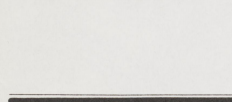
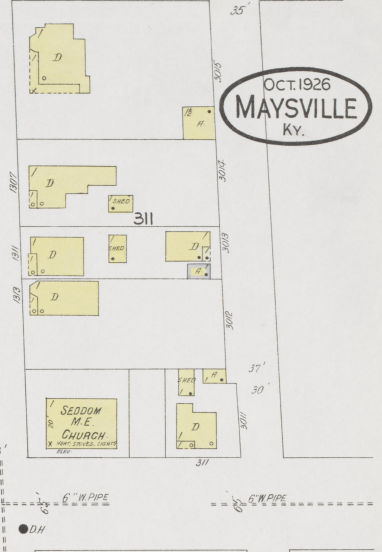
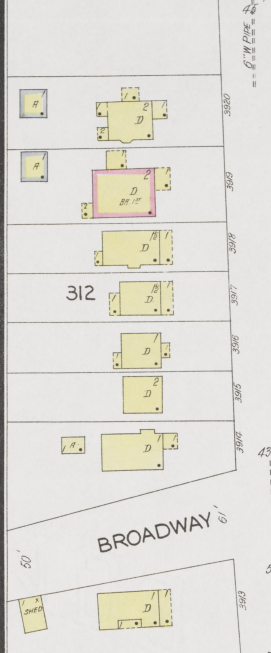
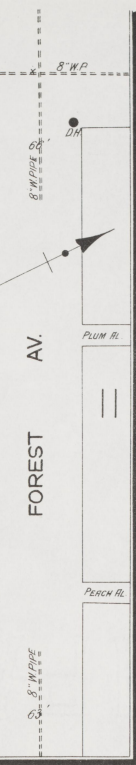
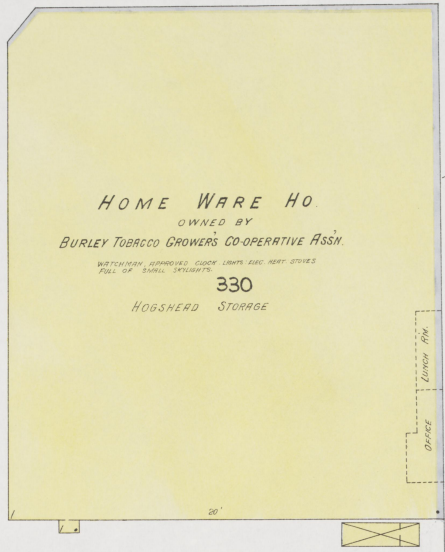
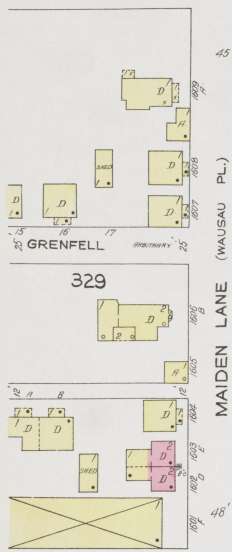
21

(2877)

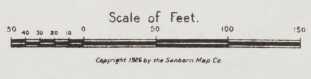
LEXINGTON

MAIN

OCT. 1926  
MAYSVILLE  
KY.



N  
O  
E  
X  
P  
O  
S  
U  
R  
E



N  
O  
E  
X  
P  
O  
S  
U  
R  
E

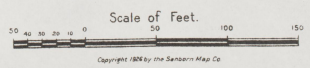
44



22

22

OCT. 1926  
MAYSVILLE  
KY.



N O E X P O S U R E B E Y O N D



JANUARY & WOOD CO.  
COTTON MILL

WATCHMAN NO CLOCK LIGHTS & POWER ELECTRIC  
HEAT: STEAM. SPRINKLER SYSTEM: DRY  
TO CITY MAIN. 142 LBS. PRESSURE (WET & DRY SYSTEM  
AS NOTED) AUTOMATIC SPRINKLER ALARM

MAYSVILLE GAS & ELECTRIC CO.  
ELECTRIC PLANT  
LIGHTS: ELECTRIC. POWER: STEAM. NO HEAT.  
BAROMETER SPRINKLER SYSTEM: 47 LBS. ONLY.  
PRESSURE: 45 LBS.

Oct. 1926  
MAYSVILLE  
KY.

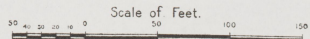
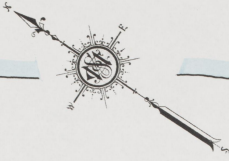


Scale of Feet.

Copyright 1926 by the Sanborn Map Co.



OCT 1926  
MAYSVILLE  
KY.



Scale of Feet.

Copyright 1926 by the Sanborn Map Co.



25

26



26

2 1/2

3 1/2

25

25

OCT 1926  
MAYSVILLE  
KY.

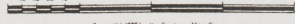
25



W. 3RD ST.

W. 2ND ST.

Scale of Feet.



24

NOT NAMED





Located 1 3/4 Miles N.W. of Court Ho.

THE H. E. FOGUE DISTILLERY CO. INC.  
BUILDINGS VACANT  
NOT IN OPERATION

326

82

THE H. E. FOGUE DISTILLERY CO. INC.  
VACANT

HOME OIL CO.  
SUPPLIES STGE



326

Oct. 1926  
MAYSVILLE  
KY.

ZWIEBERT'S SLAUGHTER HO  
& SUSHING FACTORY

Tobacco W. HO

VACANT  
HETCHINGER  
Tobacco W. HO

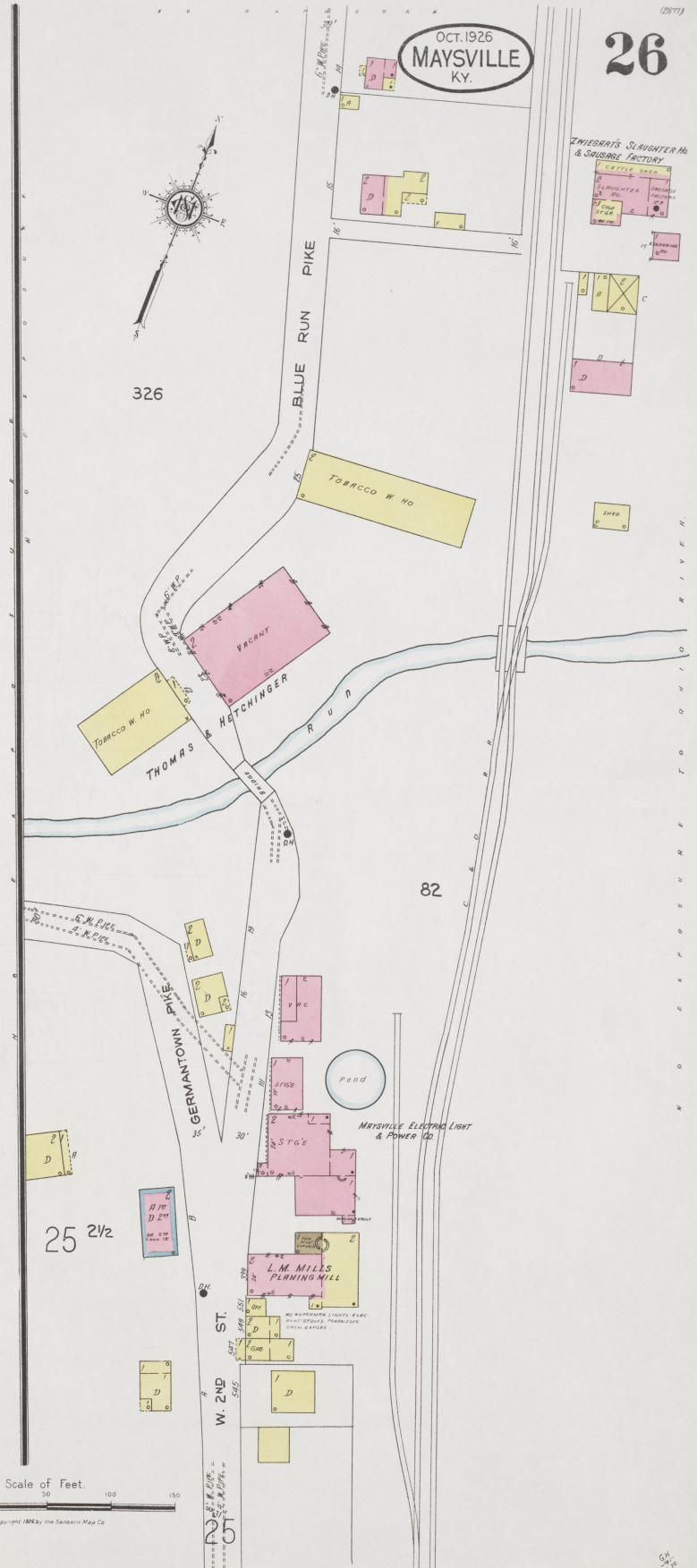
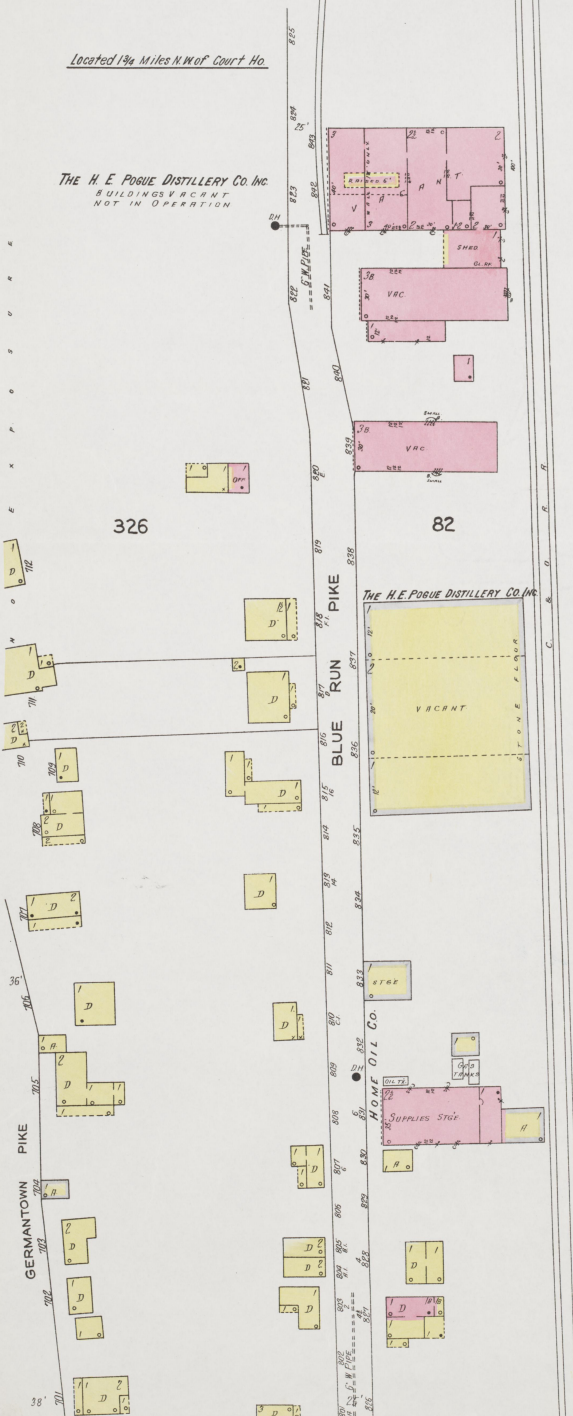
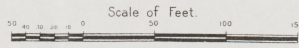
82

MAYSVILLE ELECTRIC LIGHT  
& POWER CO.

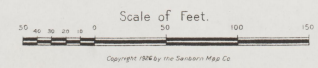
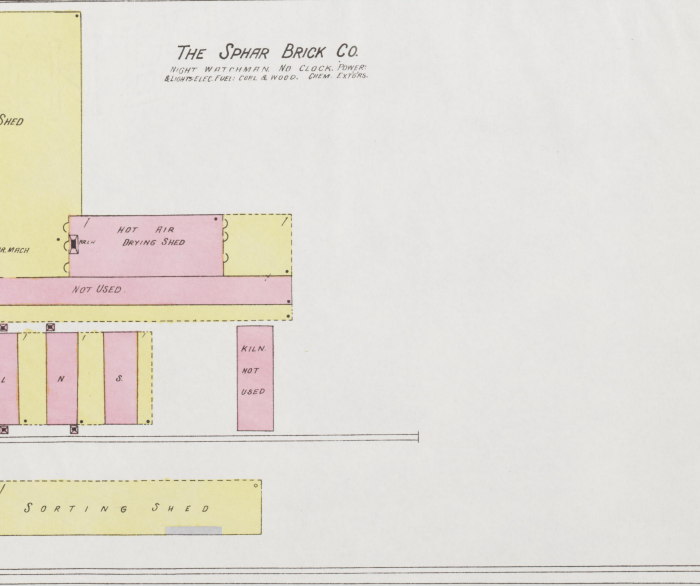
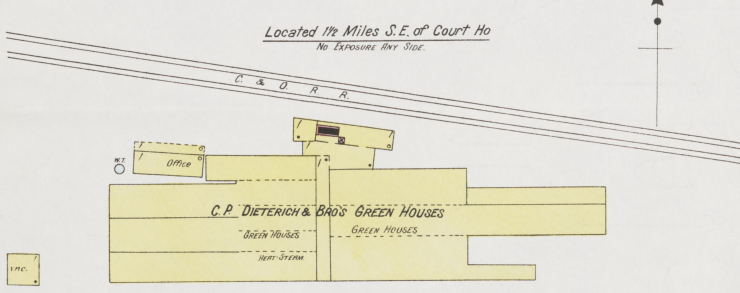
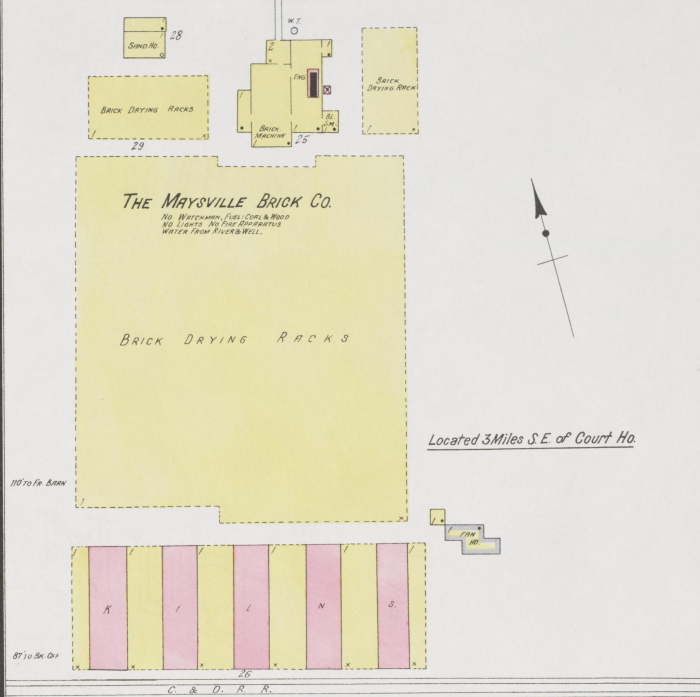
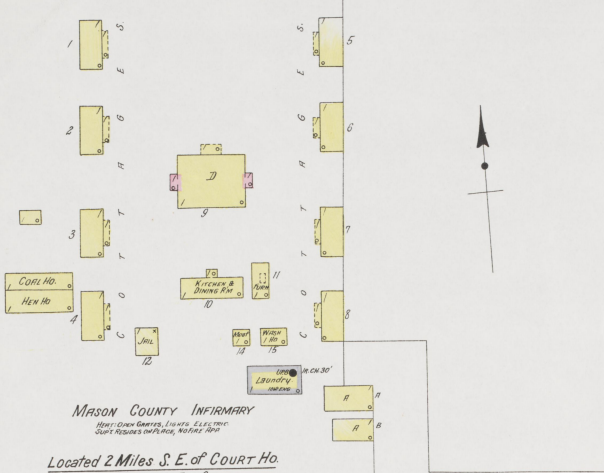
L. M. MILLS  
PLANING MILL

W. 2ND ST.

25 2 1/2







Copyright 1926 by the Sandborn Map Co.