

Population 12,000. Prevailing Winds W. & S.W.
WATER FACILITIES

Gravity and direct pressure system of water works. Water supply from Little River by dam impounding 50 million gallons, also by reserve dam impounding 75 million gallons used only in case of emergency. Water pumped to stand pipe 100 ft. high, 60 in. diam. 100,000 gallon capacity, by two Cavalier-Dunn-Corbin diaphragm pumps, capacity one million gallons each per 24 hours. In case of fire water is pumped directly into mains. 12 miles of water pipes 4 to 12 in. diam. 100 double hydrants. Gravity pressure at car of North and Main Sts., low-75 lbs., high-100 lbs. per sq. inch. Direct pressure at 128 lbs. per sq. inch. System installed 1936.

FIRE DEPARTMENT

Partly paid, 12 men, 3 fully paid men on duty during day and five at night, 7 men partly paid, 3 horses. Automatic telephone fire alarm system. Bell on hose house. Two hose wagons, one of which has hook & ladder equipment. 2800 ft. 2 1/2" hose. Grades throughout town, nearly level.

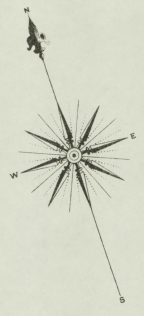
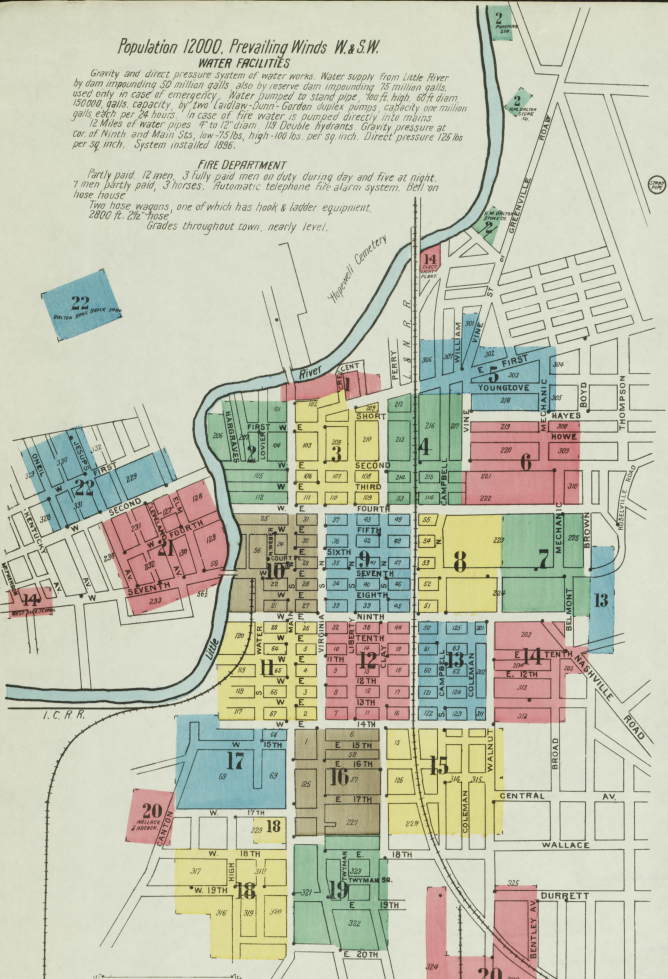
INSURANCE MAPS of HOPKINSVILLE KENTUCKY

Published by the **Sanborn Map Company** Scale 50 ft. to an inch
 11 BROADWAY, NEW YORK

Dec. 1906

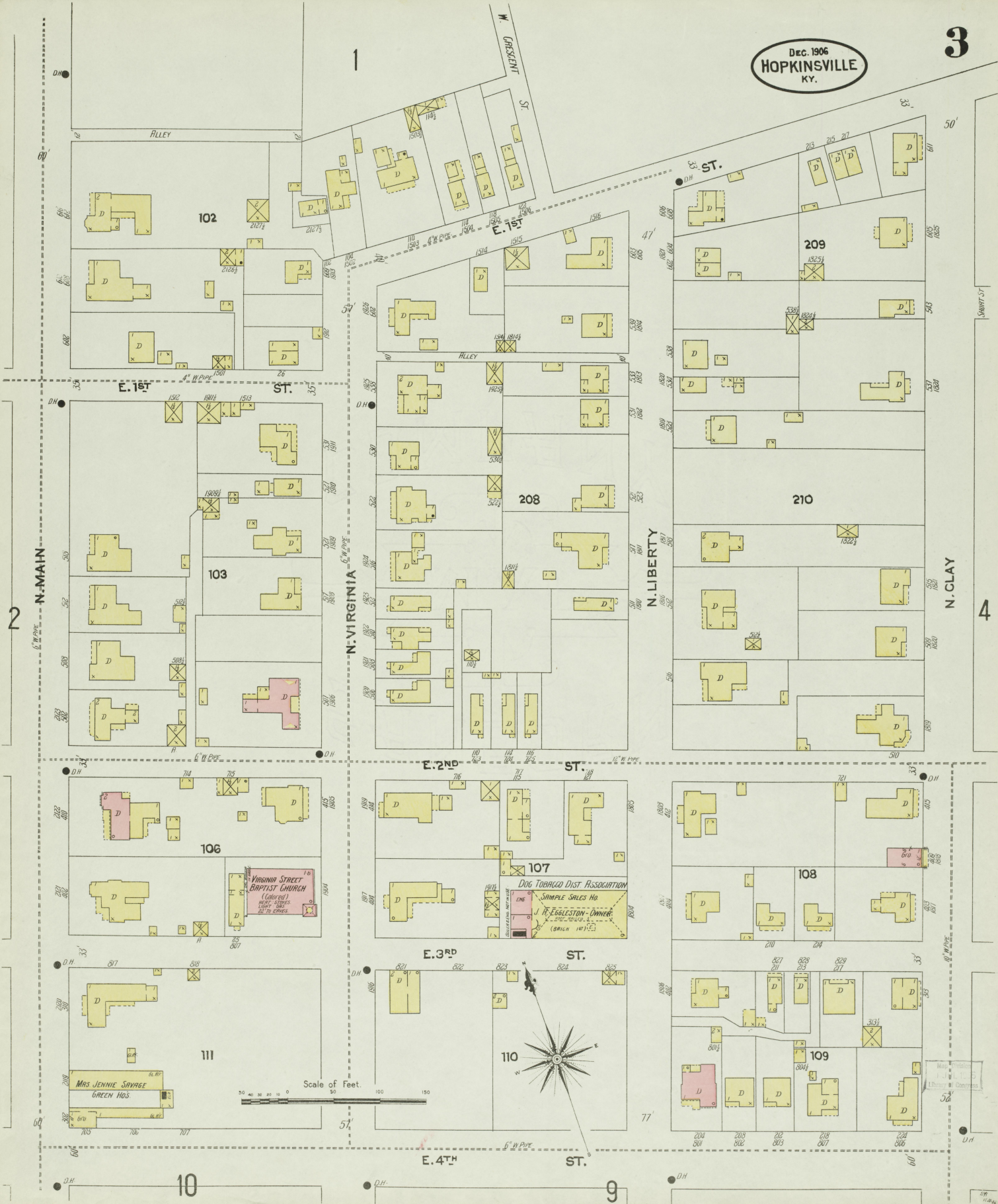
Copyright 1907 by the Sanborn Map Company

LIBRARY of Congress
 MAR 18 1907
 MAR 18 1907
 APR 13 1907

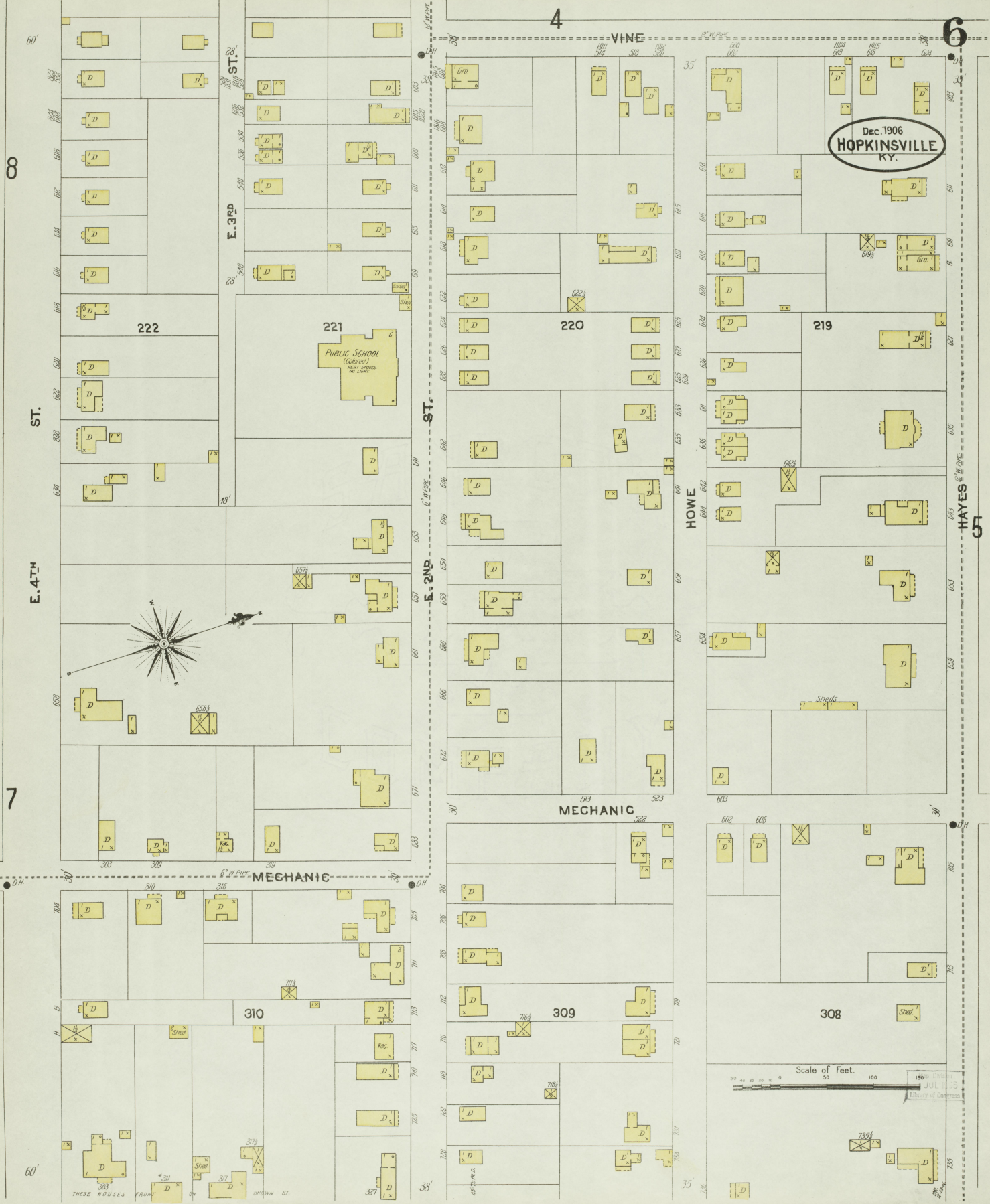


STREETS

| | | | | | | | |
|--------------|-----|------------|---------|-----|-----------------|---------|-----|
| Holmont Ave. | 7 | Fourth, E. | 300-329 | 4 | Sixteenth, E. | 100-329 | 16 |
| Bentley Ave. | 8 | High, W. | 580-720 | 5 | Seventeenth, E. | 300-440 | 17 |
| Brown | 10 | Howe, W. | 600-720 | 6 | Eighth, E. | 1-28 | 18 |
| | 11 | Jenps Ave. | 100-421 | 7 | Ninth, E. | 1-28 | 19 |
| | 12 | Kirkman | 500-620 | 8 | Tenth, E. | 1-28 | 20 |
| | 13 | Liberty | 300-421 | 9 | Eleventh, E. | 1-28 | 21 |
| | 14 | McKean | 300-421 | 10 | Twelfth, E. | 1-28 | 22 |
| | 15 | McKean | 300-421 | 11 | Thirteenth, E. | 1-28 | 23 |
| | 16 | McKean | 300-421 | 12 | Fourteenth, E. | 1-28 | 24 |
| | 17 | McKean | 300-421 | 13 | Fifteenth, E. | 1-28 | 25 |
| | 18 | McKean | 300-421 | 14 | Sixteenth, E. | 1-28 | 26 |
| | 19 | McKean | 300-421 | 15 | Seventeenth, E. | 1-28 | 27 |
| | 20 | McKean | 300-421 | 16 | Eighteenth, E. | 1-28 | 28 |
| | 21 | McKean | 300-421 | 17 | Nineteenth, E. | 1-28 | 29 |
| | 22 | McKean | 300-421 | 18 | Twentieth, E. | 1-28 | 30 |
| | 23 | McKean | 300-421 | 19 | Wallace | 1-28 | 31 |
| | 24 | McKean | 300-421 | 20 | Durrett | 1-28 | 32 |
| | 25 | McKean | 300-421 | 21 | Eighteenth, E. | 1-28 | 33 |
| | 26 | McKean | 300-421 | 22 | Eighth, E. | 1-28 | 34 |
| | 27 | McKean | 300-421 | 23 | Ninth, E. | 1-28 | 35 |
| | 28 | McKean | 300-421 | 24 | Tenth, E. | 1-28 | 36 |
| | 29 | McKean | 300-421 | 25 | Eleventh, E. | 1-28 | 37 |
| | 30 | McKean | 300-421 | 26 | Twelfth, E. | 1-28 | 38 |
| | 31 | McKean | 300-421 | 27 | Thirteenth, E. | 1-28 | 39 |
| | 32 | McKean | 300-421 | 28 | Fourteenth, E. | 1-28 | 40 |
| | 33 | McKean | 300-421 | 29 | Fifteenth, E. | 1-28 | 41 |
| | 34 | McKean | 300-421 | 30 | Sixteenth, E. | 1-28 | 42 |
| | 35 | McKean | 300-421 | 31 | Seventeenth, E. | 1-28 | 43 |
| | 36 | McKean | 300-421 | 32 | Eighteenth, E. | 1-28 | 44 |
| | 37 | McKean | 300-421 | 33 | Nineteenth, E. | 1-28 | 45 |
| | 38 | McKean | 300-421 | 34 | Twentieth, E. | 1-28 | 46 |
| | 39 | McKean | 300-421 | 35 | Wallace | 1-28 | 47 |
| | 40 | McKean | 300-421 | 36 | Durrett | 1-28 | 48 |
| | 41 | McKean | 300-421 | 37 | Eighteenth, E. | 1-28 | 49 |
| | 42 | McKean | 300-421 | 38 | Eighth, E. | 1-28 | 50 |
| | 43 | McKean | 300-421 | 39 | Ninth, E. | 1-28 | 51 |
| | 44 | McKean | 300-421 | 40 | Tenth, E. | 1-28 | 52 |
| | 45 | McKean | 300-421 | 41 | Eleventh, E. | 1-28 | 53 |
| | 46 | McKean | 300-421 | 42 | Twelfth, E. | 1-28 | 54 |
| | 47 | McKean | 300-421 | 43 | Thirteenth, E. | 1-28 | 55 |
| | 48 | McKean | 300-421 | 44 | Fourteenth, E. | 1-28 | 56 |
| | 49 | McKean | 300-421 | 45 | Fifteenth, E. | 1-28 | 57 |
| | 50 | McKean | 300-421 | 46 | Sixteenth, E. | 1-28 | 58 |
| | 51 | McKean | 300-421 | 47 | Seventeenth, E. | 1-28 | 59 |
| | 52 | McKean | 300-421 | 48 | Eighteenth, E. | 1-28 | 60 |
| | 53 | McKean | 300-421 | 49 | Nineteenth, E. | 1-28 | 61 |
| | 54 | McKean | 300-421 | 50 | Twentieth, E. | 1-28 | 62 |
| | 55 | McKean | 300-421 | 51 | Wallace | 1-28 | 63 |
| | 56 | McKean | 300-421 | 52 | Durrett | 1-28 | 64 |
| | 57 | McKean | 300-421 | 53 | Eighteenth, E. | 1-28 | 65 |
| | 58 | McKean | 300-421 | 54 | Eighth, E. | 1-28 | 66 |
| | 59 | McKean | 300-421 | 55 | Ninth, E. | 1-28 | 67 |
| | 60 | McKean | 300-421 | 56 | Tenth, E. | 1-28 | 68 |
| | 61 | McKean | 300-421 | 57 | Eleventh, E. | 1-28 | 69 |
| | 62 | McKean | 300-421 | 58 | Twelfth, E. | 1-28 | 70 |
| | 63 | McKean | 300-421 | 59 | Thirteenth, E. | 1-28 | 71 |
| | 64 | McKean | 300-421 | 60 | Fourteenth, E. | 1-28 | 72 |
| | 65 | McKean | 300-421 | 61 | Fifteenth, E. | 1-28 | 73 |
| | 66 | McKean | 300-421 | 62 | Sixteenth, E. | 1-28 | 74 |
| | 67 | McKean | 300-421 | 63 | Seventeenth, E. | 1-28 | 75 |
| | 68 | McKean | 300-421 | 64 | Eighteenth, E. | 1-28 | 76 |
| | 69 | McKean | 300-421 | 65 | Nineteenth, E. | 1-28 | 77 |
| | 70 | McKean | 300-421 | 66 | Twentieth, E. | 1-28 | 78 |
| | 71 | McKean | 300-421 | 67 | Wallace | 1-28 | 79 |
| | 72 | McKean | 300-421 | 68 | Durrett | 1-28 | 80 |
| | 73 | McKean | 300-421 | 69 | Eighteenth, E. | 1-28 | 81 |
| | 74 | McKean | 300-421 | 70 | Eighth, E. | 1-28 | 82 |
| | 75 | McKean | 300-421 | 71 | Ninth, E. | 1-28 | 83 |
| | 76 | McKean | 300-421 | 72 | Tenth, E. | 1-28 | 84 |
| | 77 | McKean | 300-421 | 73 | Eleventh, E. | 1-28 | 85 |
| | 78 | McKean | 300-421 | 74 | Twelfth, E. | 1-28 | 86 |
| | 79 | McKean | 300-421 | 75 | Thirteenth, E. | 1-28 | 87 |
| | 80 | McKean | 300-421 | 76 | Fourteenth, E. | 1-28 | 88 |
| | 81 | McKean | 300-421 | 77 | Fifteenth, E. | 1-28 | 89 |
| | 82 | McKean | 300-421 | 78 | Sixteenth, E. | 1-28 | 90 |
| | 83 | McKean | 300-421 | 79 | Seventeenth, E. | 1-28 | 91 |
| | 84 | McKean | 300-421 | 80 | Eighteenth, E. | 1-28 | 92 |
| | 85 | McKean | 300-421 | 81 | Nineteenth, E. | 1-28 | 93 |
| | 86 | McKean | 300-421 | 82 | Twentieth, E. | 1-28 | 94 |
| | 87 | McKean | 300-421 | 83 | Wallace | 1-28 | 95 |
| | 88 | McKean | 300-421 | 84 | Durrett | 1-28 | 96 |
| | 89 | McKean | 300-421 | 85 | Eighteenth, E. | 1-28 | 97 |
| | 90 | McKean | 300-421 | 86 | Eighth, E. | 1-28 | 98 |
| | 91 | McKean | 300-421 | 87 | Ninth, E. | 1-28 | 99 |
| | 92 | McKean | 300-421 | 88 | Tenth, E. | 1-28 | 100 |
| | 93 | McKean | 300-421 | 89 | Eleventh, E. | 1-28 | 101 |
| | 94 | McKean | 300-421 | 90 | Twelfth, E. | 1-28 | 102 |
| | 95 | McKean | 300-421 | 91 | Thirteenth, E. | 1-28 | 103 |
| | 96 | McKean | 300-421 | 92 | Fourteenth, E. | 1-28 | 104 |
| | 97 | McKean | 300-421 | 93 | Fifteenth, E. | 1-28 | 105 |
| | 98 | McKean | 300-421 | 94 | Sixteenth, E. | 1-28 | 106 |
| | 99 | McKean | 300-421 | 95 | Seventeenth, E. | 1-28 | 107 |
| | 100 | McKean | 300-421 | 96 | Eighteenth, E. | 1-28 | 108 |
| | 101 | McKean | 300-421 | 97 | Nineteenth, E. | 1-28 | 109 |
| | 102 | McKean | 300-421 | 98 | Twentieth, E. | 1-28 | 110 |
| | 103 | McKean | 300-421 | 99 | Wallace | 1-28 | 111 |
| | 104 | McKean | 300-421 | 100 | Durrett | 1-28 | 112 |
| | 105 | McKean | 300-421 | 101 | Eighteenth, E. | 1-28 | 113 |
| | 106 | McKean | 300-421 | 102 | Eighth, E. | 1-28 | 114 |
| | 107 | McKean | 300-421 | 103 | Ninth, E. | 1-28 | 115 |
| | 108 | McKean | 300-421 | 104 | Tenth, E. | 1-28 | 116 |
| | 109 | McKean | 300-421 | 105 | Eleventh, E. | 1-28 | 117 |
| | 110 | McKean | 300-421 | 106 | Twelfth, E. | 1-28 | 118 |
| | 111 | McKean | 300-421 | 107 | Thirteenth, E. | 1-28 | 119 |
| | 112 | McKean | 300-421 | 108 | Fourteenth, E. | 1-28 | 120 |
| | 113 | McKean | 300-421 | 109 | Fifteenth, E. | 1-28 | 121 |
| | 114 | McKean | 300-421 | 110 | Sixteenth, E. | 1-28 | 122 |
| | 115 | McKean | 300-421 | 111 | Seventeenth, E. | 1-28 | 123 |
| | 116 | McKean | 300-421 | 112 | Eighteenth, E. | 1-28 | 124 |
| | 117 | McKean | 300-421 | 113 | Nineteenth, E. | 1-28 | 125 |
| | 118 | McKean | 300-421 | 114 | Twentieth, E. | 1-28 | 126 |
| | 119 | McKean | 300-421 | 115 | Wallace | 1-28 | 127 |
| | 120 | McKean | 300-421 | 116 | Durrett | 1-28 | 128 |
| | 121 | McKean | 300-421 | 117 | Eighteenth, E. | 1-28 | 129 |
| | 122 | McKean | 300-421 | 118 | Eighth, E. | 1-28 | 130 |
| | 123 | McKean | 300-421 | 119 | Ninth, E. | 1-28 | 131 |
| | 124 | McKean | 300-421 | 120 | Tenth, E. | 1-28 | 132 |
| | 125 | McKean | 300-421 | 121 | Eleventh, E. | 1-28 | 133 |
| | 126 | McKean | 300-421 | 122 | Twelfth, E. | 1-28 | 134 |
| | 127 | McKean | 300-421 | 123 | Thirteenth, E. | 1-28 | 135 |
| | 128 | McKean | 300-421 | 124 | Fourteenth, E. | 1-28 | 136 |
| | 129 | McKean | 300-421 | 125 | Fifteenth, E. | 1-28 | 137 |
| | 130 | McKean | 300-421 | 126 | Sixteenth, E. | 1-28 | 138 |
| | 131 | McKean | 300-421 | 127 | Seventeenth, E. | 1-28 | 139 |
| | 132 | McKean | 300-421 | 128 | Eighteenth, E. | 1-28 | 140 |
| | 133 | McKean | 300-421 | 129 | Nineteenth, E. | 1-28 | 141 |
| | 134 | McKean | 300-421 | 130 | Twentieth, E. | 1-28 | 142 |
| | 135 | McKean | 300-421 | 131 | Wallace | 1-28 | 143 |
| | 136 | McKean | 300-421 | 132 | Durrett | 1-28 | 144 |
| | 137 | McKean | 300-421 | 133 | Eighteenth, E. | 1-28 | 145 |
| | 138 | McKean | 300-421 | 134 | Eighth, E. | 1-28 | 146 |
| | 139 | McKean | 300-421 | 135 | Ninth, E. | 1-28 | 147 |
| | 140 | McKean | 300-421 | 136 | Tenth, E. | 1-28 | 148 |
| | 141 | McKean | 300-421 | 137 | Eleventh, E. | 1-28 | 149 |
| | 142 | McKean | 300-421 | 138 | Twelfth, E. | 1-28 | 150 |
| | 143 | McKean | 300-421 | 139 | Thirteenth, E. | 1-28 | 151 |
| | 144 | McKean | 300-421 | 140 | Fourteenth, E. | 1-28 | 152 |
| | 145 | McKean | 300-421 | 141 | Fifteenth, E. | 1-28 | 153 |
| | 146 | McKean | 300-421 | 142 | Sixteenth, E. | 1-28 | 154 |
| | 147 | McKean | 300-421 | 143 | Seventeenth, E. | 1-28 | 155 |
| | 148 | McKean | 300-421 | 144 | Eighteenth, E. | 1-28 | 156 |
| | 149 | McKean | 300-421 | 145 | Nineteenth, E. | 1-28 | 157 |
| | 150 | McKean | 300-421 | 146 | Twentieth, E. | 1-28 | 158 |
| | 151 | McKean | 300-421 | 147 | Wallace | 1-2 | |







Dec. 1906
HOPKINSVILLE
 KY.

Scale of Feet.
 0 25 50 75 100 125 150
 JUL 1 1915
 Library of Congress

THESE HOUSES FROM
 303
 311
 312
 313
 314
 315
 316
 317
 318
 319
 320
 321
 322
 323
 324
 325
 326
 327
 328
 329
 330
 331
 332
 333
 334
 335
 336
 337
 338
 339
 340
 341
 342
 343
 344
 345
 346
 347
 348
 349
 350
 351
 352
 353
 354
 355
 356
 357
 358
 359
 360
 361
 362
 363
 364
 365
 366
 367
 368
 369
 370
 371
 372
 373
 374
 375

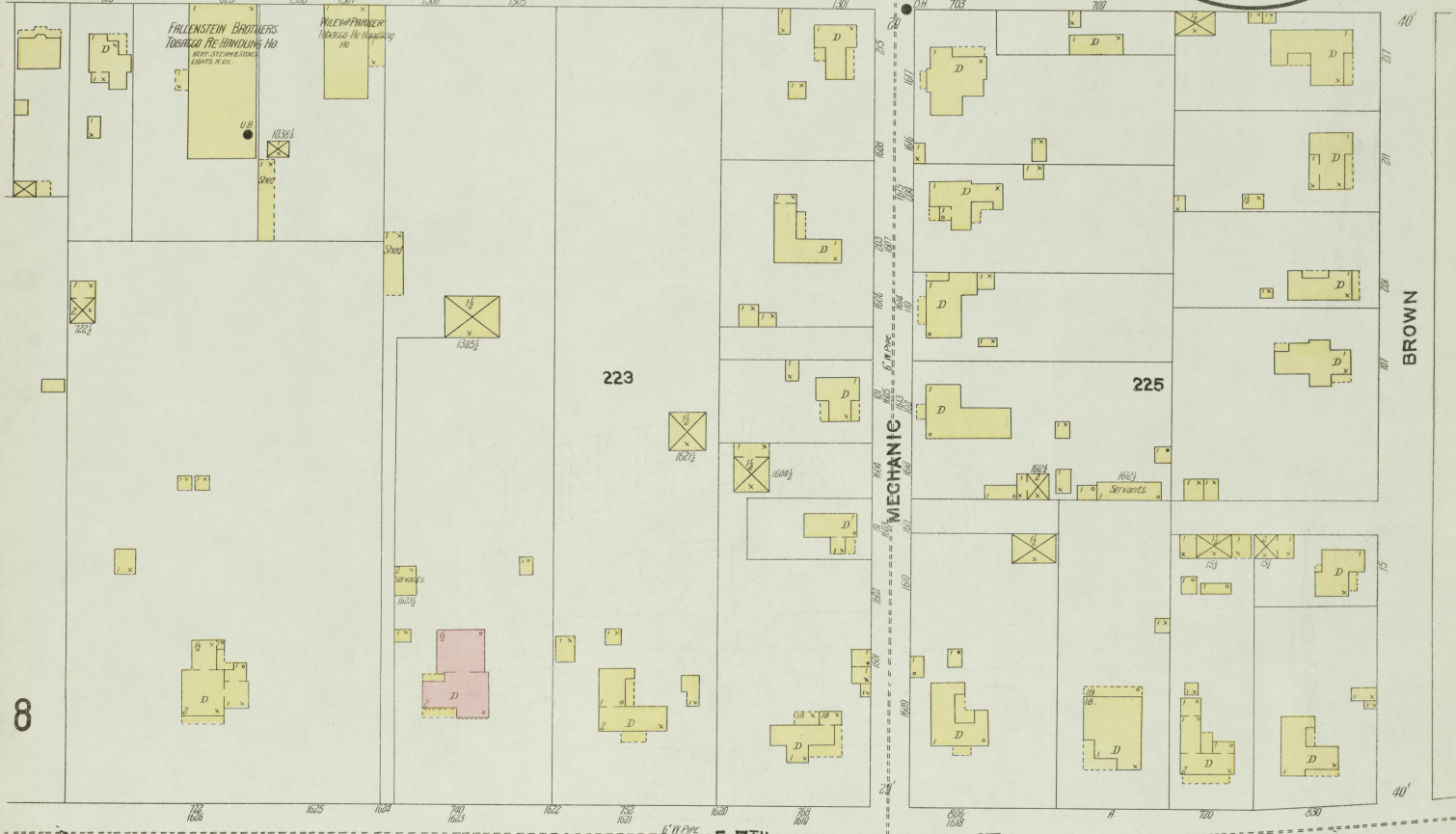
6

7

Dec. 1906
HOPKINSVILLE
KY.

E. 4TH ST.

ST.



8

13

E. 7TH ST.

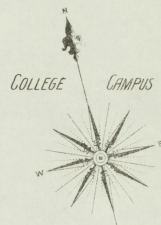
ST.



E. 9TH ST.

ST.

14



Scale of Feet.
0 50 100 150

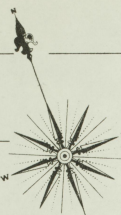
Map Division
JUL 1 1915
Library of Congress

4

6

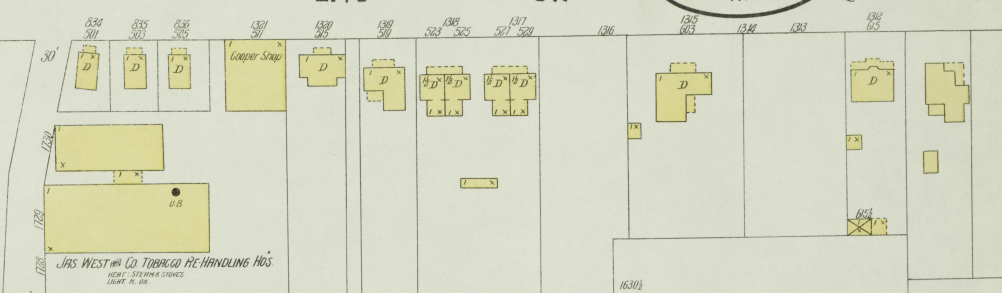
8

DEC. 1906
HOPKINSVILLE
KY.

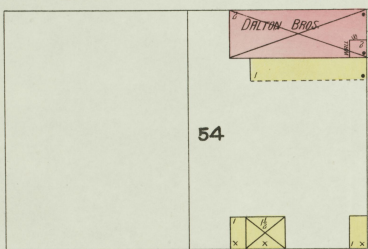


VACANT
55

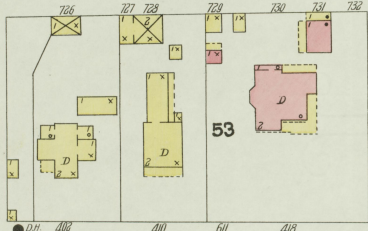
E. 4TH ST.



E. 5TH ST.

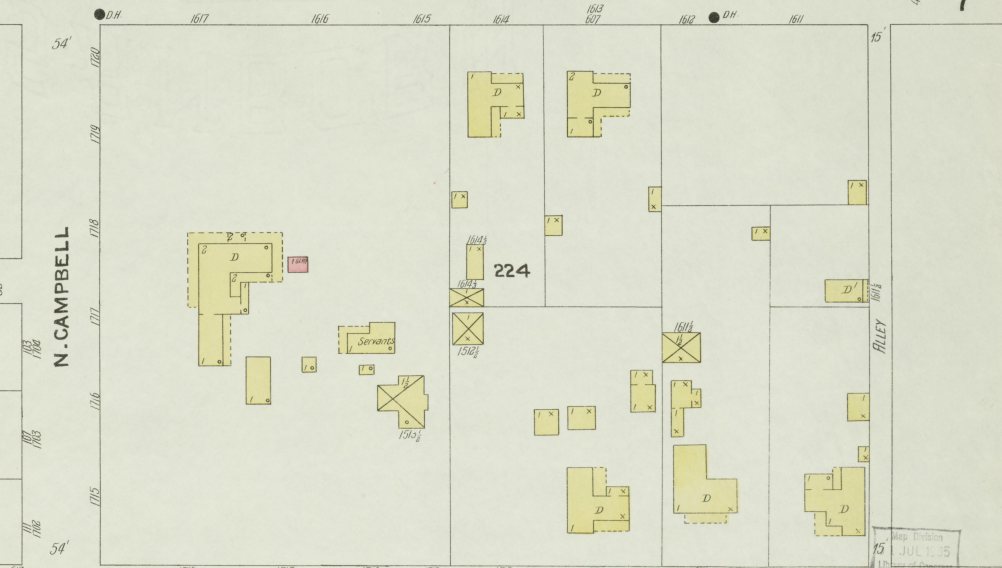


E. 6TH ST.

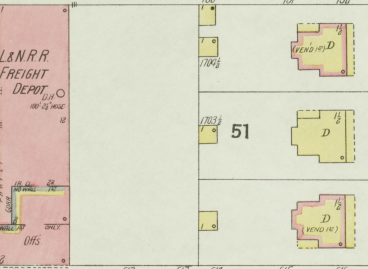


N. CAMPBELL

E. 7TH ST.

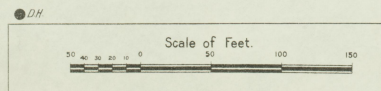


E. 8TH ST.



N. CAMPBELL

E. 9TH ST.



13

COLEMAN ST.

WALNUT ST.

14

Map Edition
15 JUL 1 1915
1 in. = 100 feet

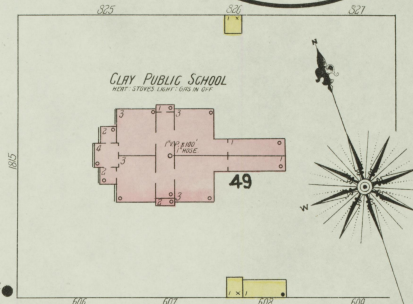
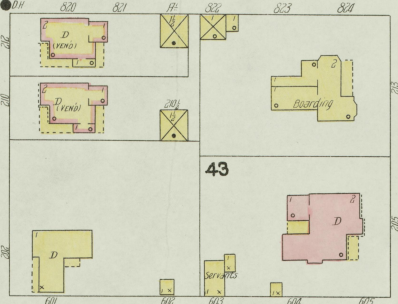
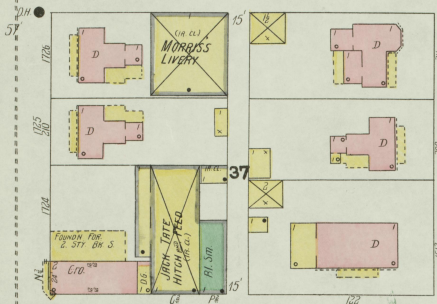
3

4

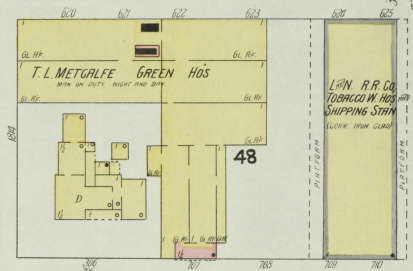
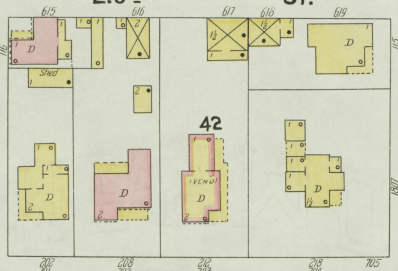
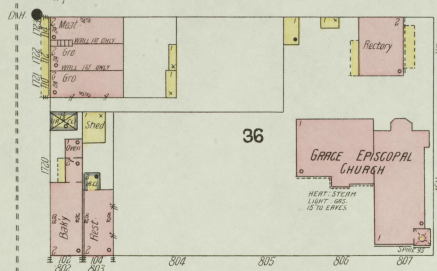
9

DEC. 1906
HOPKINSVILLE
KY.

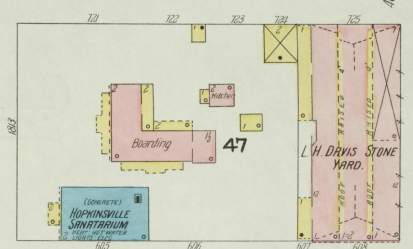
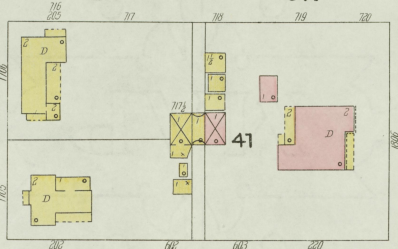
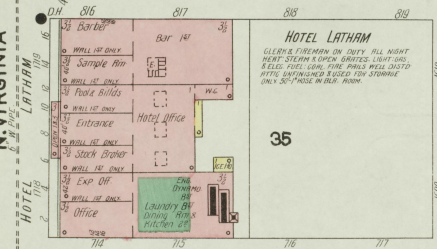
E. 4TH ST.



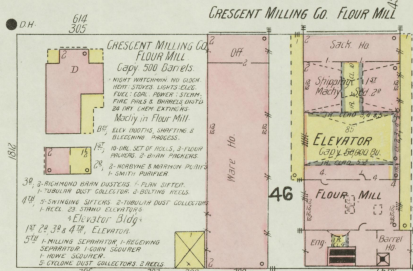
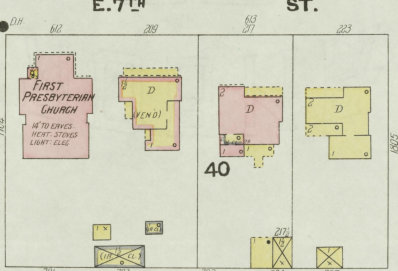
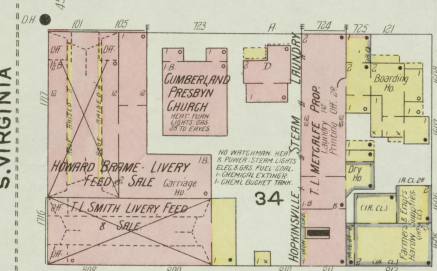
E. 5TH ST.



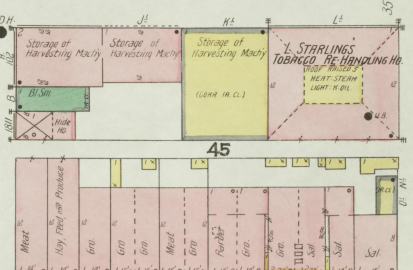
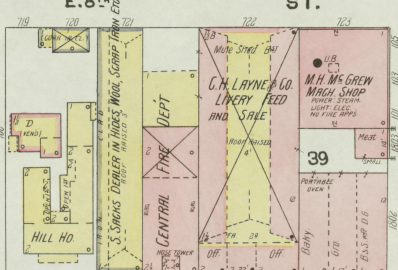
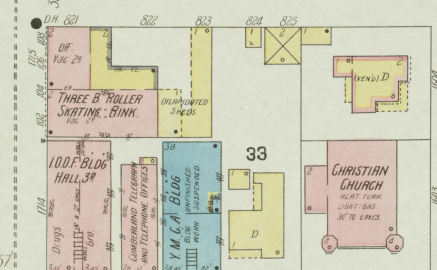
E. 6TH ST.



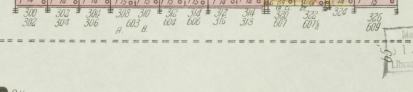
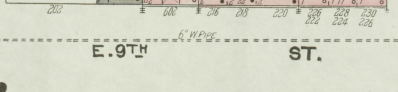
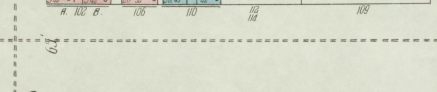
E. 7TH ST.



E. 8TH ST.



E. 9TH ST.



Scale of Feet. 0 20 40 60 80 100 120 140 160

12

N. VIRGINIA

S. VIRGINIA

N. LIBERTY

S. LIBERTY

N. CLAY

N. CLAY

8

D.H.

2

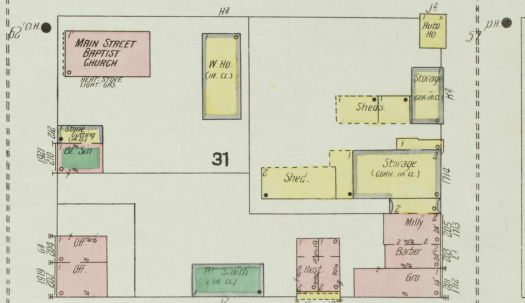
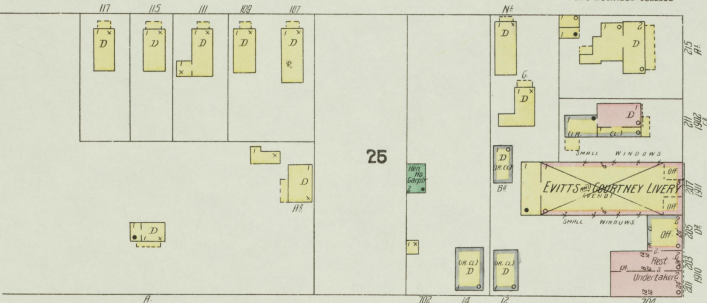
3

DEC. 1906
HOPKINSVILLE
KY.

10

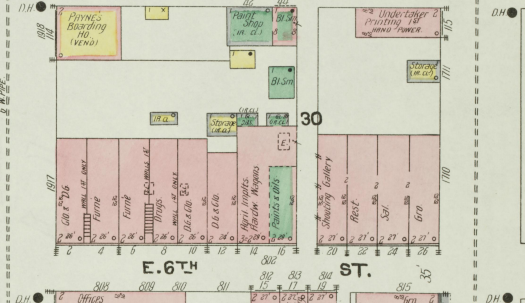
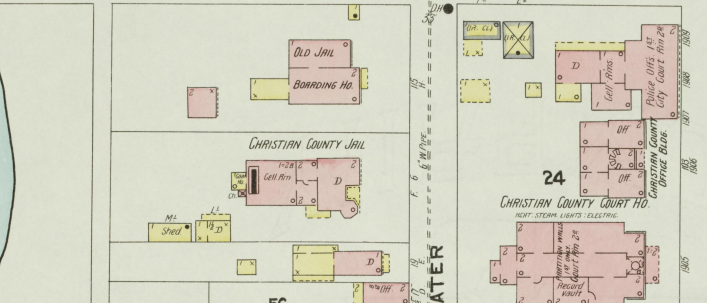
W. 4TH ST.

E. 4TH ST.



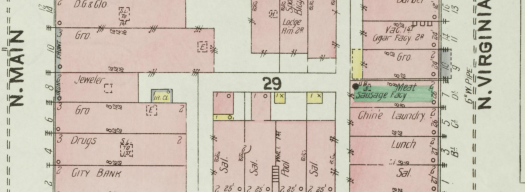
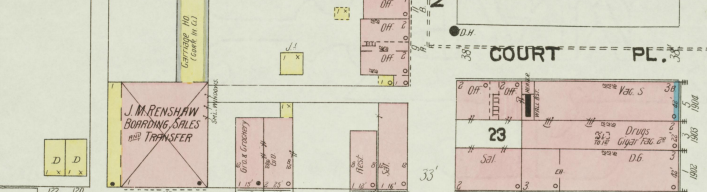
W. 5TH ST.

E. 5TH ST.



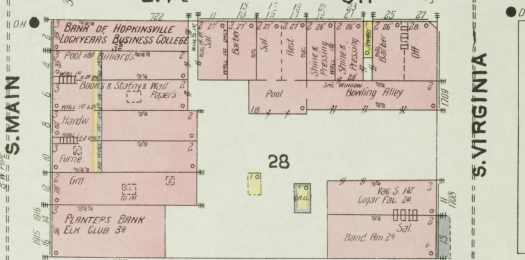
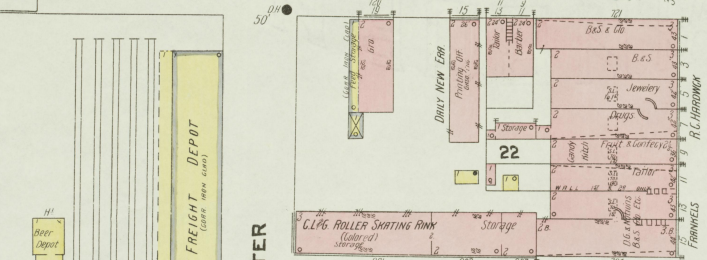
W. 6TH ST.

E. 6TH ST.



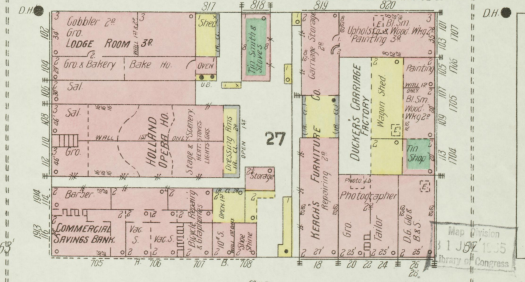
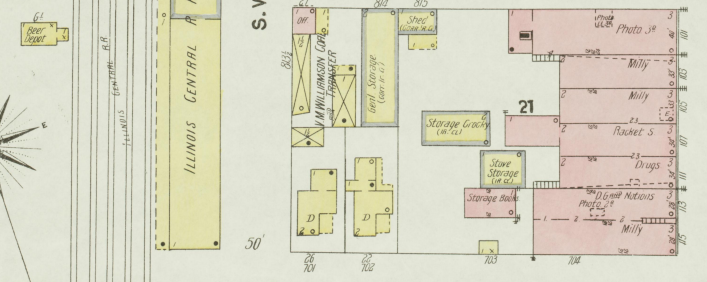
W. 7TH ST.

E. 7TH ST.



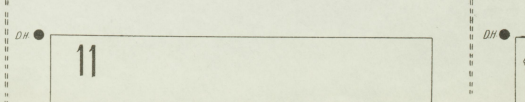
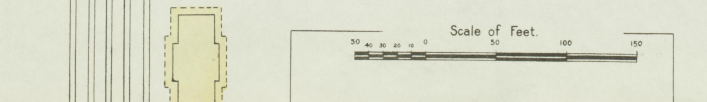
W. 8TH ST.

E. 8TH ST.



W. 9TH ST.

E. 9TH ST.



21

9

N. VIRGINIA

S. VIRGINIA

100

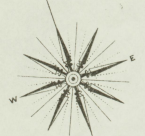
33'

S. WATER

N. WATER

STONE BRIDGE

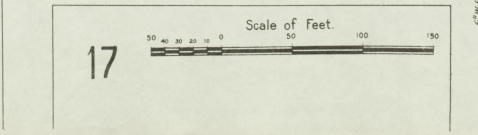
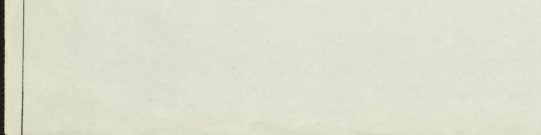
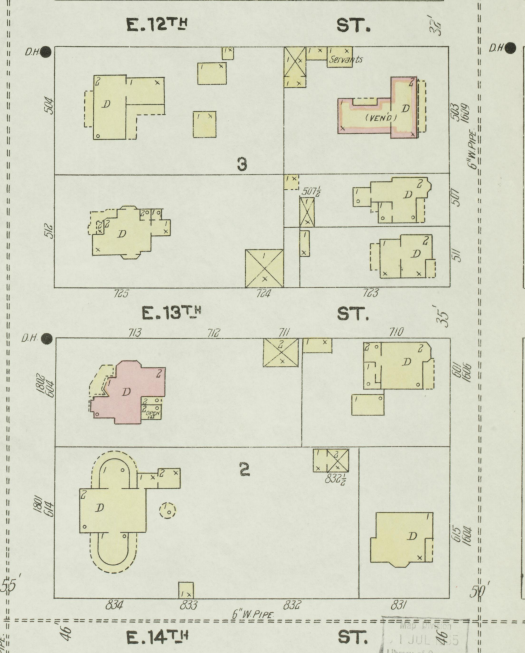
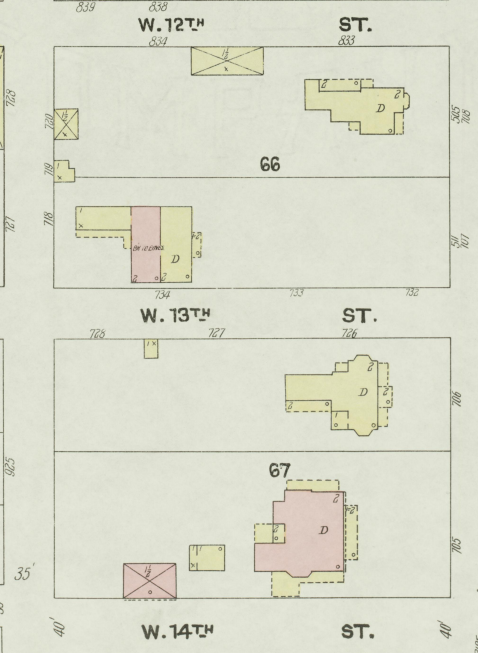
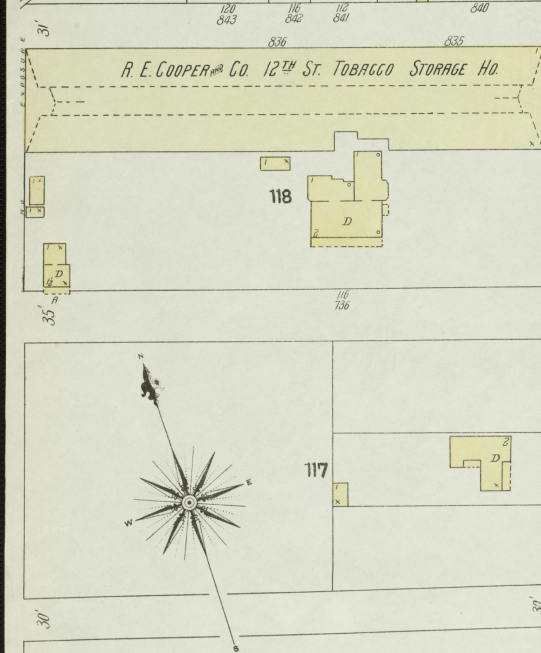
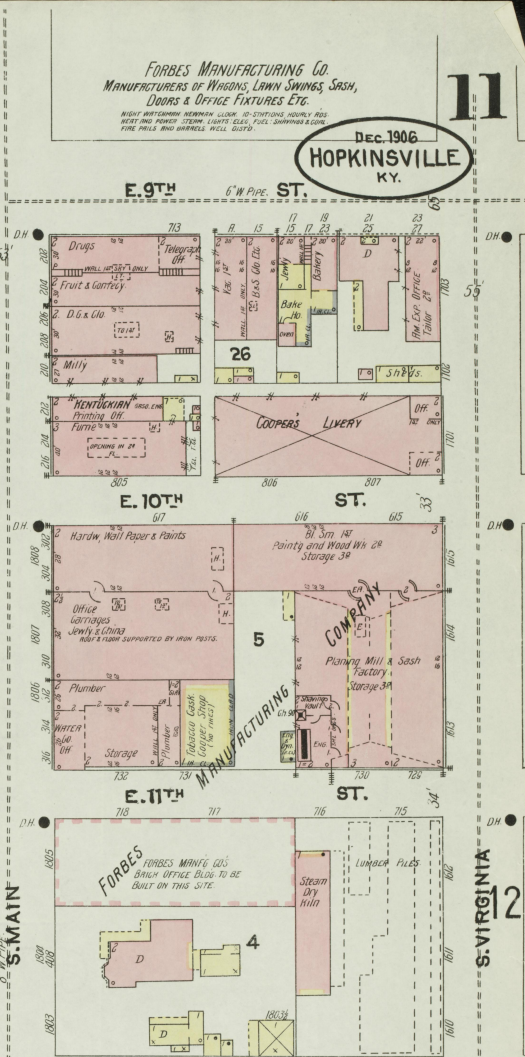
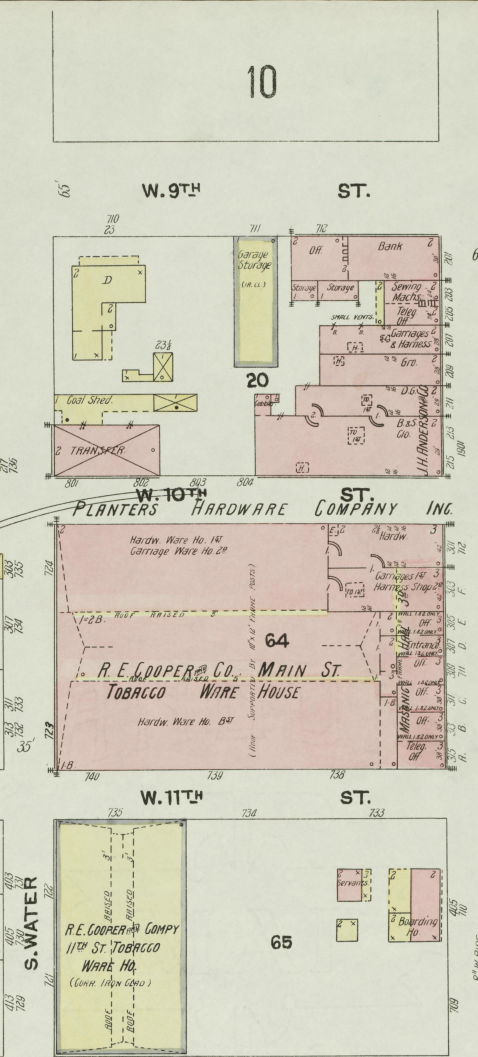
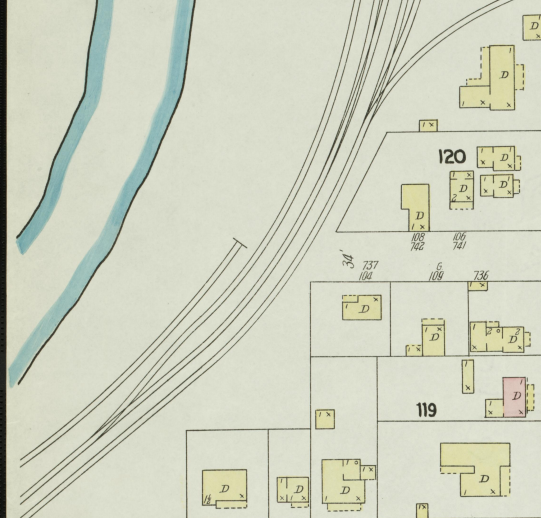
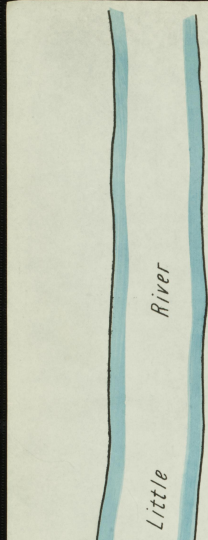
Little River



Scale of Feet.



11



FORBES MANUFACTURING CO. MANUFACTURERS OF WINDMILL LAWN SWINGS, GRASS, DOORS & DECORATIVE FIXTURES ETC. RIGHT WATERMILL MANUFACTURING COOK-UP STATIONS, HOODS, BARS, BREAD AND POWER TRAM, LIGHTS, ETC. FIRE PULLS AND BARRELS, WELLS, ETC.

Dec. 1906 HOPKINSVILLE KY.

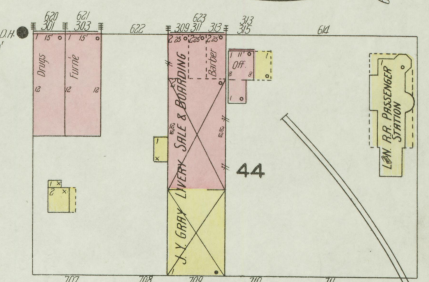
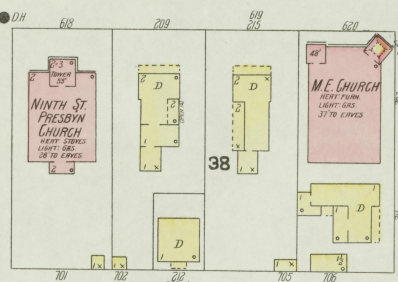
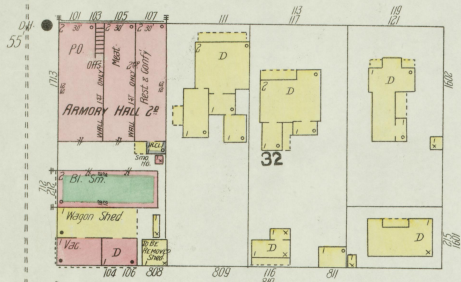
11

12

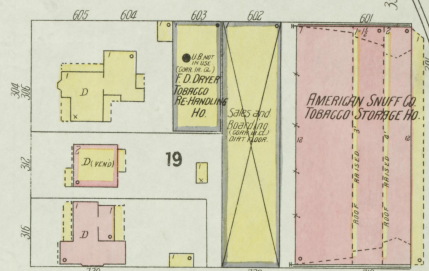
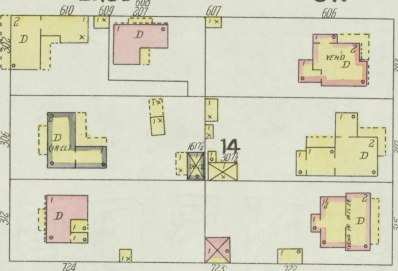
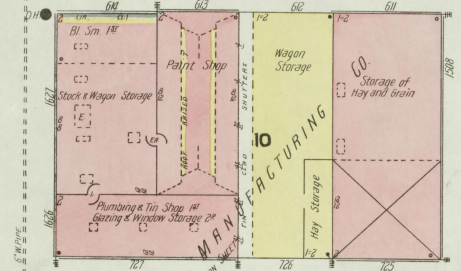
13

Dec. 1906
HOPKINSVILLE
KY.

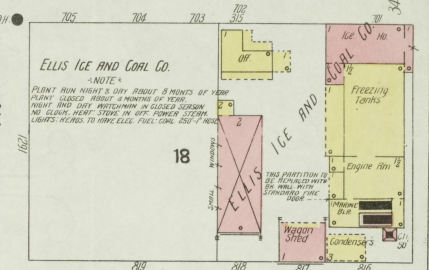
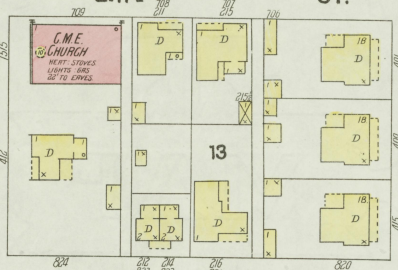
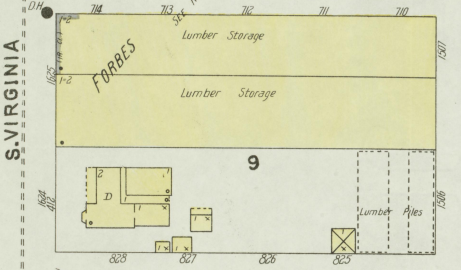
E. 9TH ST.



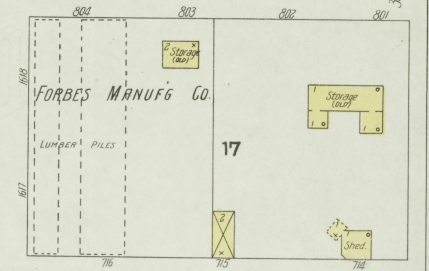
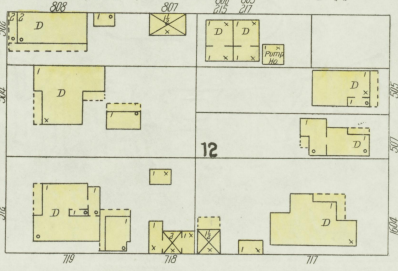
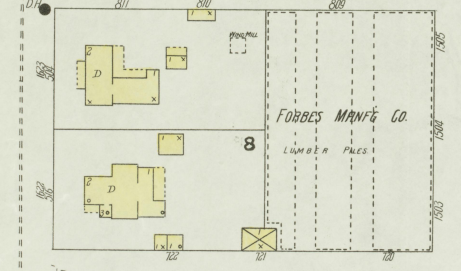
E. 10TH ST.



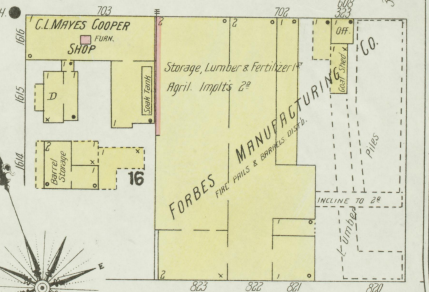
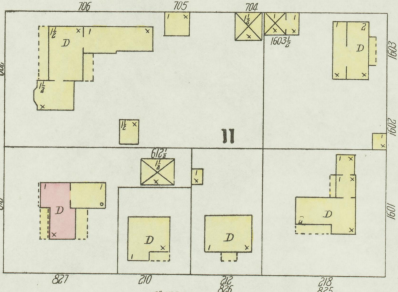
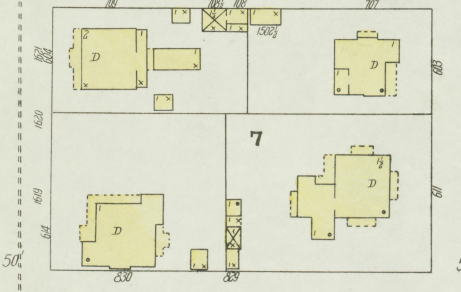
E. 11TH ST.



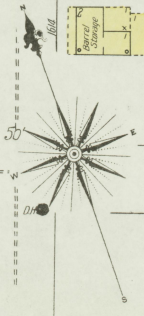
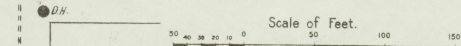
E. 12TH ST.

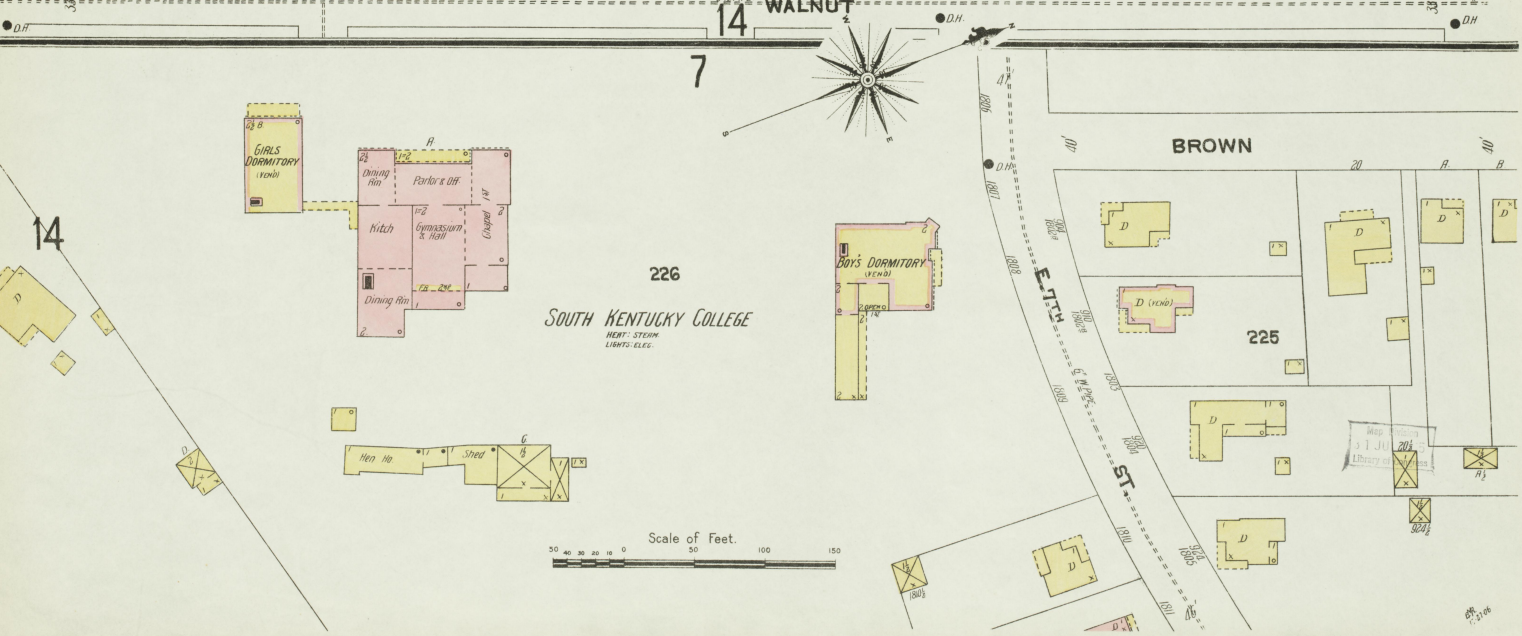
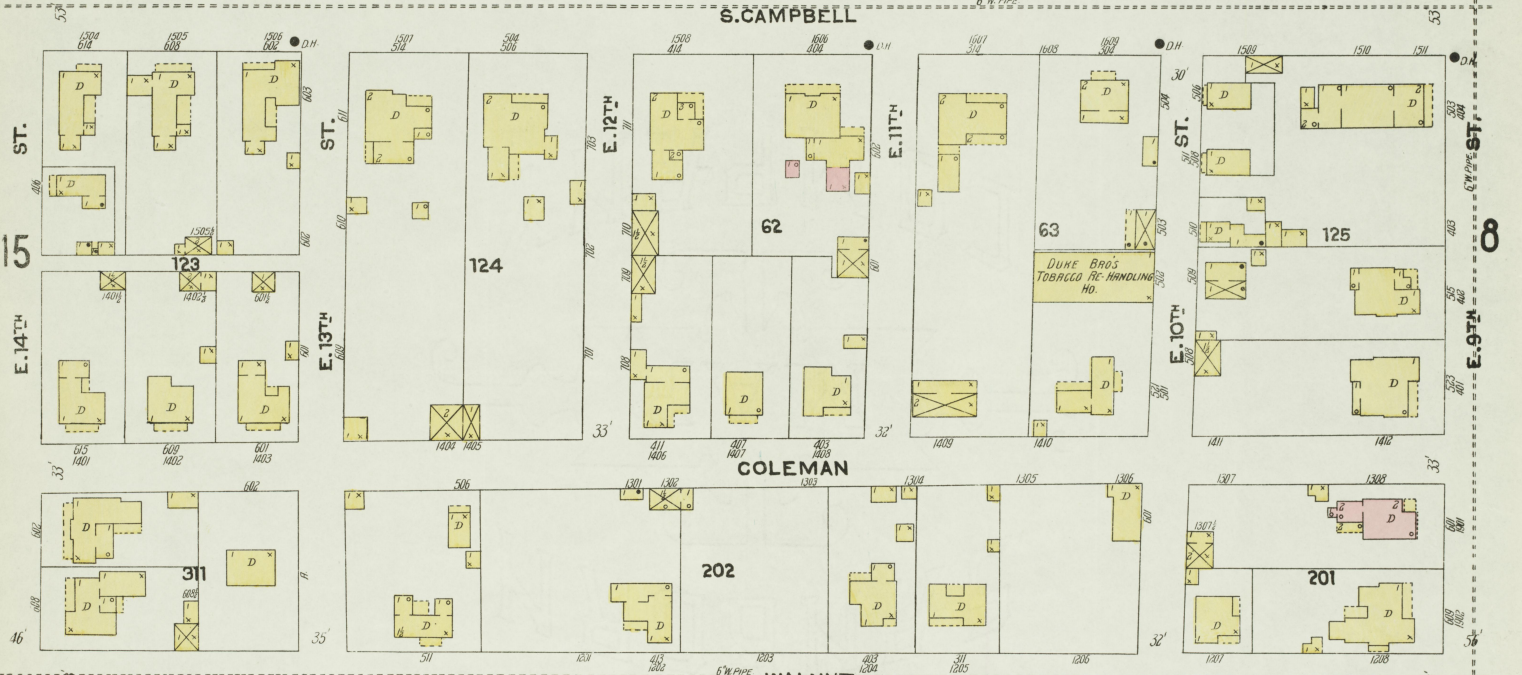
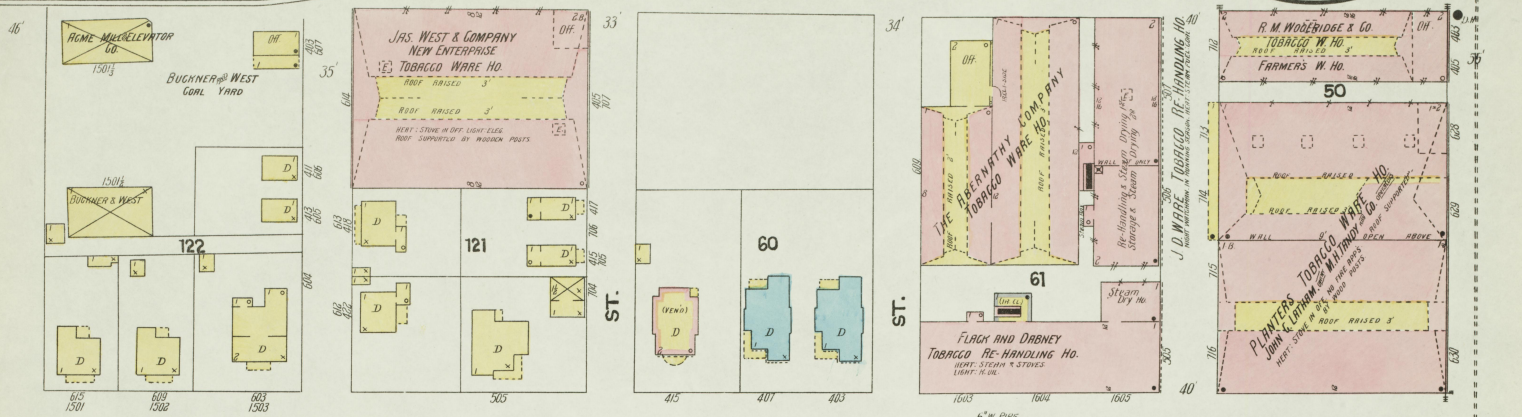


E. 13TH ST.



E. 14TH ST.





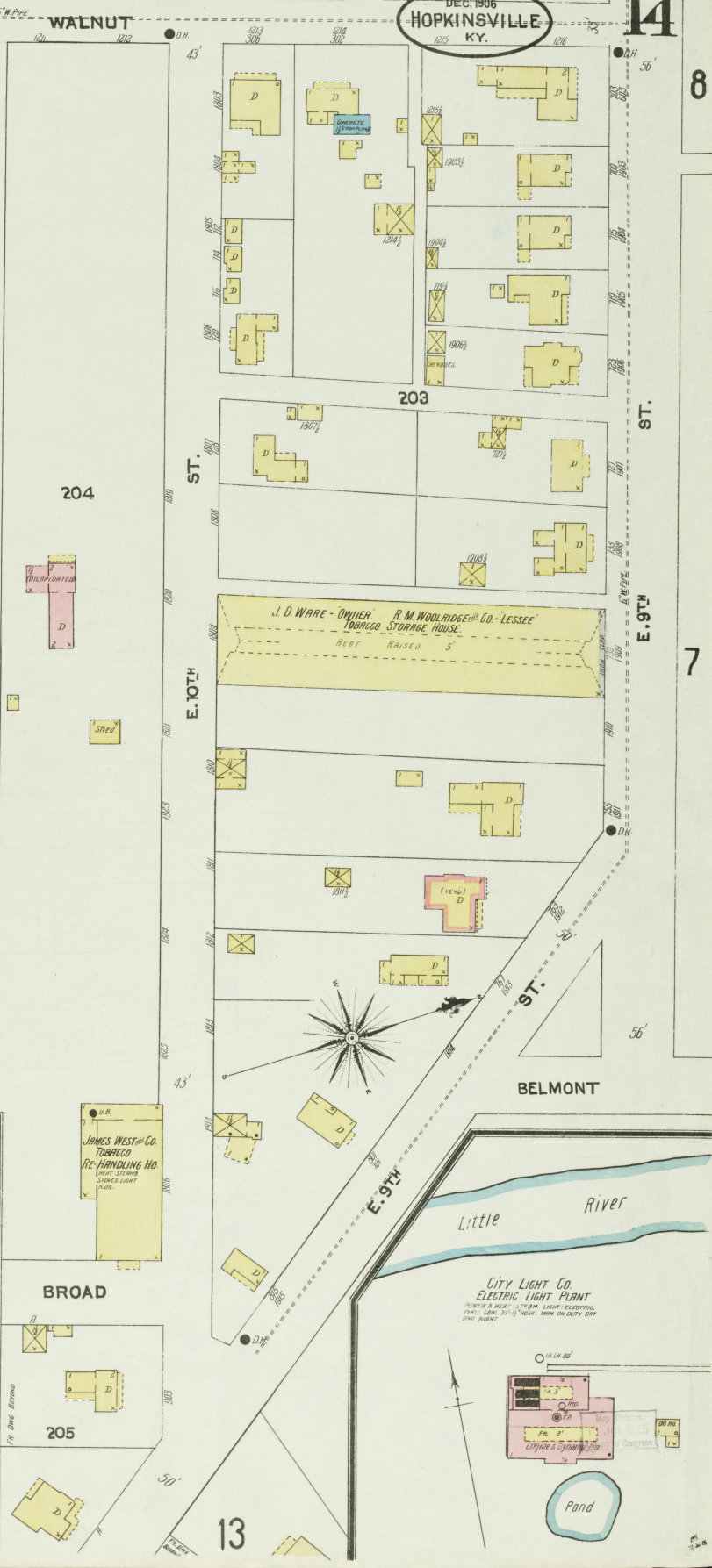
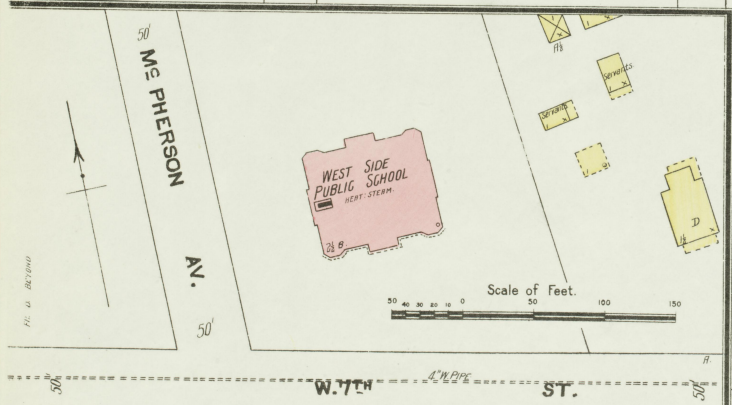
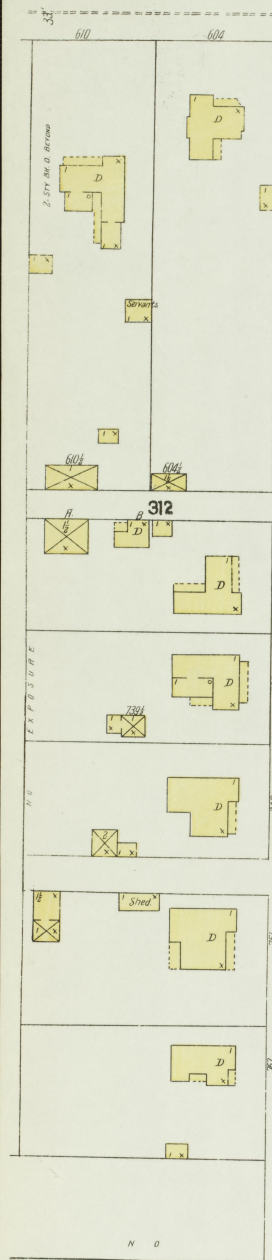
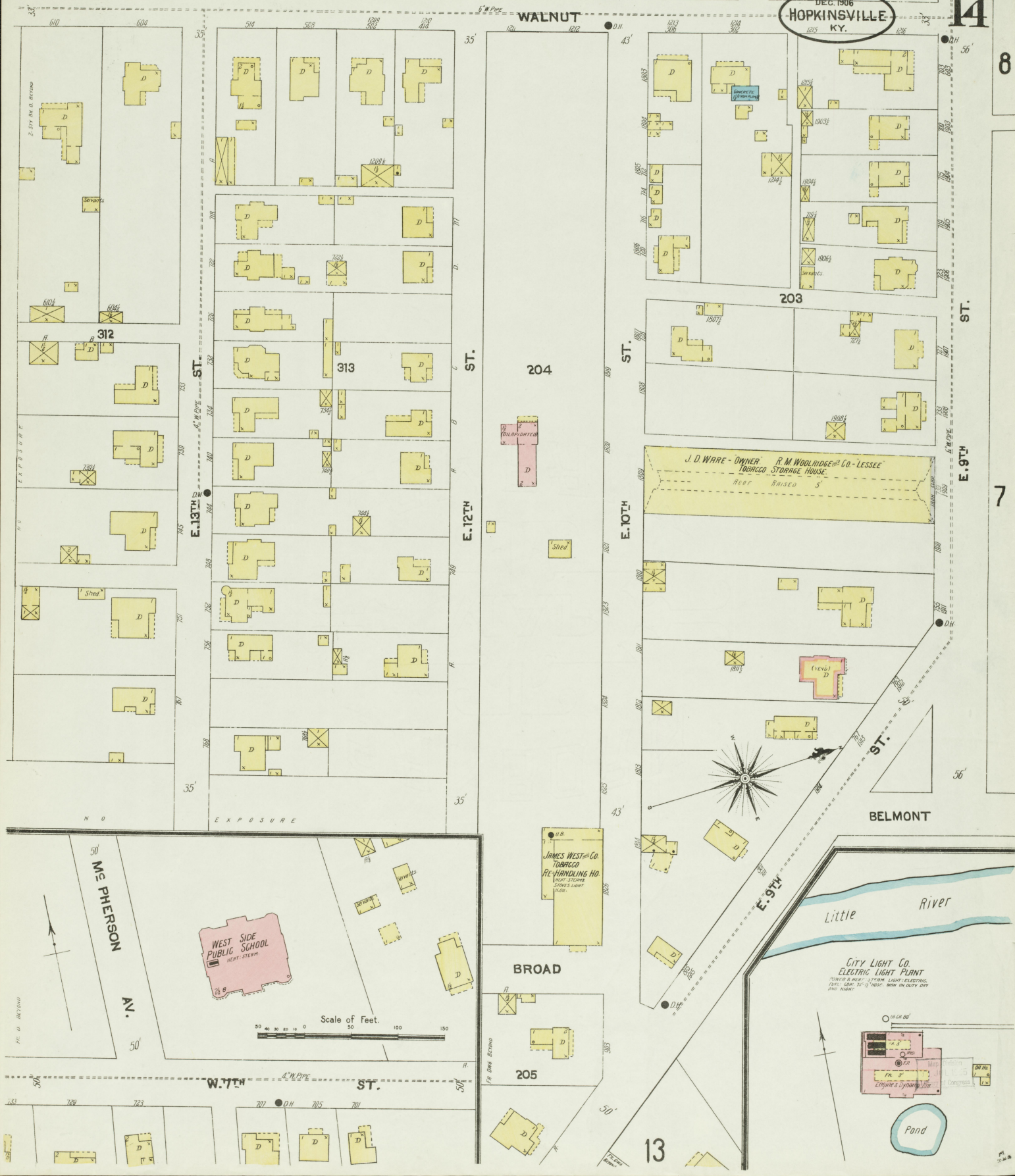
13

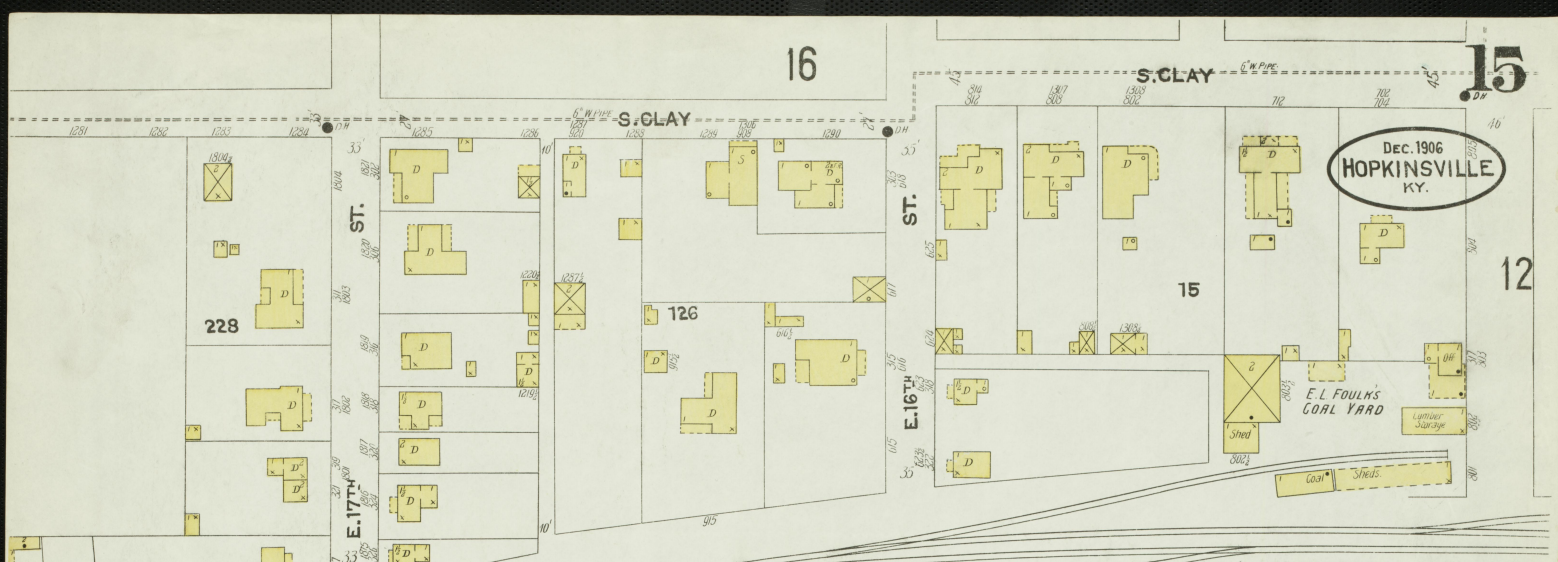
DEC. 1906
HOPKINSVILLE
KY.

14

8

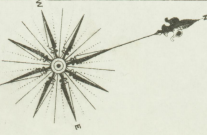
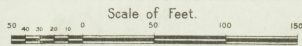
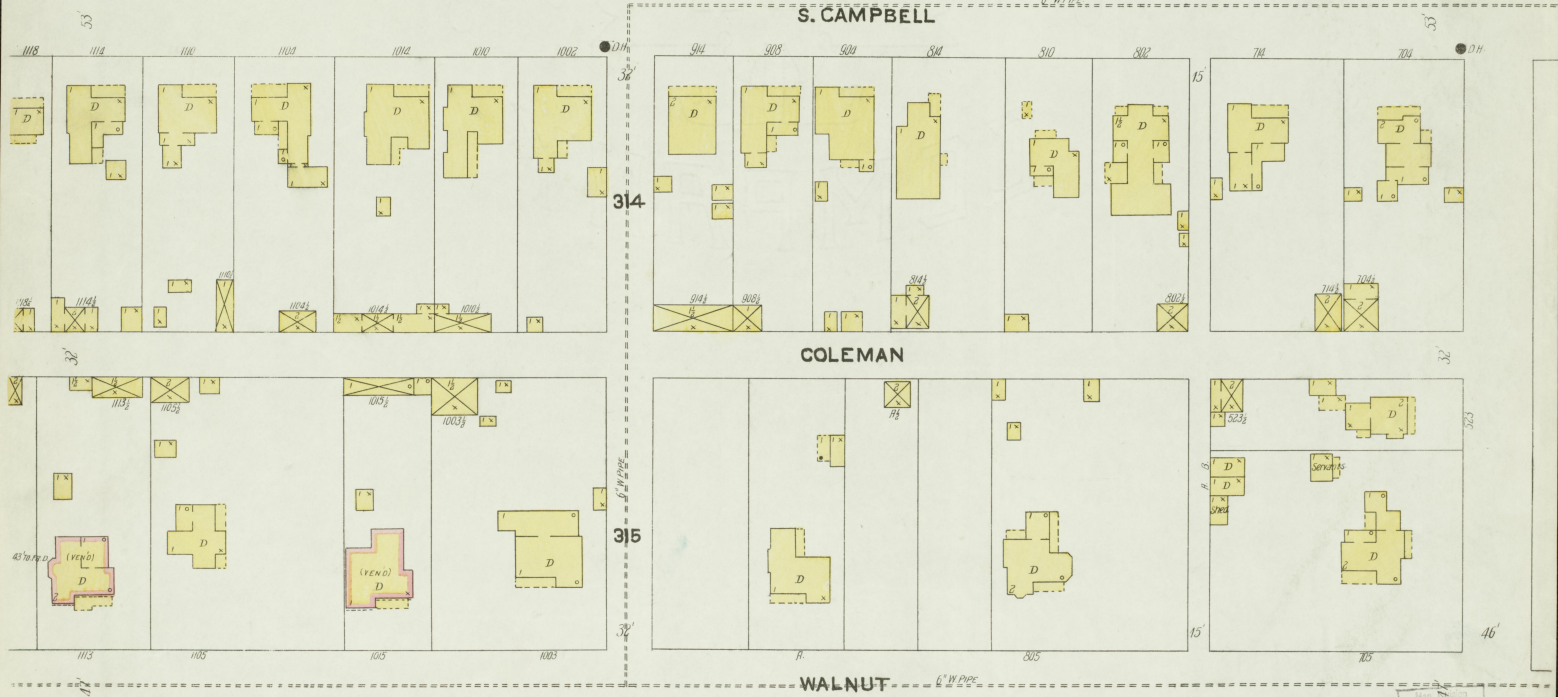
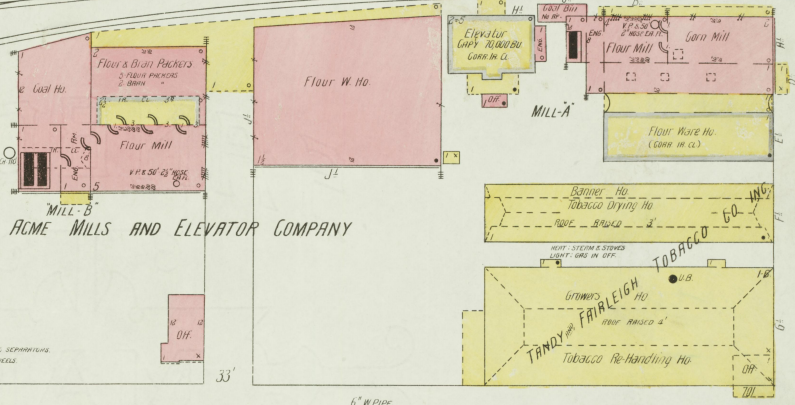
7





Dec. 1906
HOPKINSVILLE
KY.

NOTE:-
 1. ALL BUILDINGS ARE COLOR RED. STEAM & ELECT. 2. LINES IN BLUE. LIGHTS, ELEC. LUGS, CORDS, & P. & B. WIRE AS SHOWN. FIRE PIPES & BILLS (HATCH) BELLS WITH COPY AND INDEX.
Machinery in Mill A.
 147. 1. BURN PRICKER. 2. FLOUR PACKERS. FULL LINE SHAFING. ELEVATORS. BILLS. SEPARATORS.
 248. 1. DOUBLE STANDING 2. BURN PIPES. 2. DOUBLE STANDING 2. BURN PIPES. 1. MANHOLE. SEPARATION. 2. SCROLL MILL. 1. BURN CONVEYOR.
 38. 1. BURN PIPES. 2. BURN PIPES. 2. CENTRIFUGAL PIPES. 1. DUSTION FROM. 1. BURN COLLECTOR. 1. BURN DUSTER. 2. WHEAT SEQUENCER. 2. LINE SPEED SHAFING.
 419. 1. 3/4 IN. SIFTERS. 2. BURN PIPES. 1. SHIP DUSTER. 1. DUST COLLECTOR. 1. DUSTING. 1. DUST COLLECTOR. 1. MILLING SEPARATION. Capacity 300 D.B.S. in 24 Hours.
Machinery in Mill B.
 147. ELEC. BILLS AND SHAFING.
 148. 2. DOUBLE STANDING 2. BURN PIPES. 1. SCREENING MILL.
 34. 1. SPORTING FLOOR. 1. WHEAT DIVER. 1. DUST COLLECTOR. 1. WHEAT DUNE.
 34. 1. WHEAT DIVER. 1. CYCLONE DUST COLLECTOR. 2. 3/4 IN. PIPES. 2. LINE SPEED SHAFING. 1. WHEAT DUNE. 2. 2 IN. DUSTERS. 1. MILLING SEPARATION. 2. MANHOLE SEPARATION.
 312. 1. WHEAT SEQUENCER. 1. WHEAT SEQUENCER. 1. MILLING SEPARATION. 2. CENTRIFUGAL PIPES.
 315. HEADS UP IN STANDING. CAPACITY 300 D.B.S. IN 24 HOURS.



LIBRARY OF CONGRESS
 JUL 1 1906

2 STY. BK. DMS. BEYOND.

DEC. 1906
HOPKINSVILLE
KY.

16

15

17

18

19

E. 14TH ST.

E. 15TH ST.

E. 16TH ST.

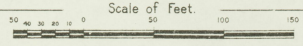
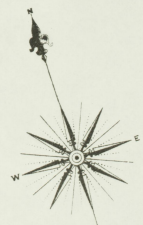
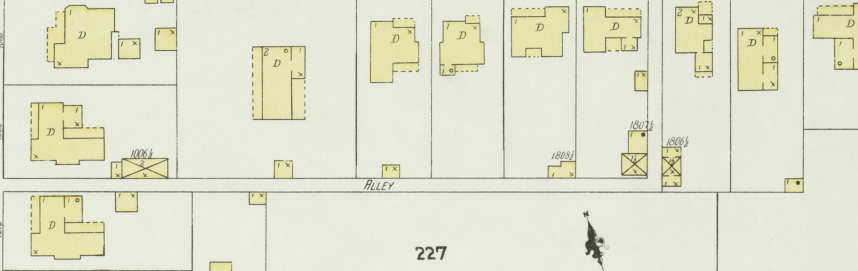
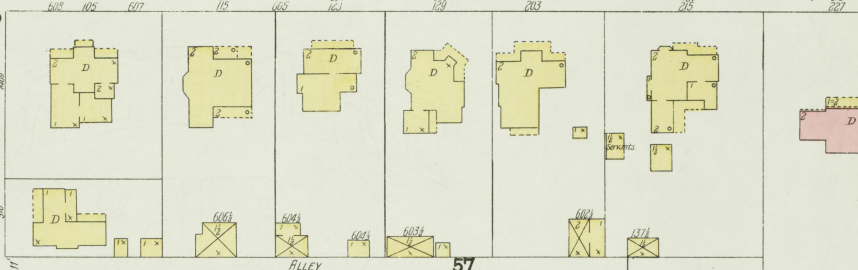
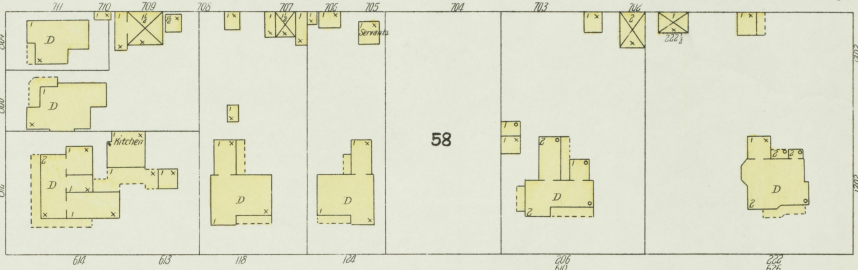
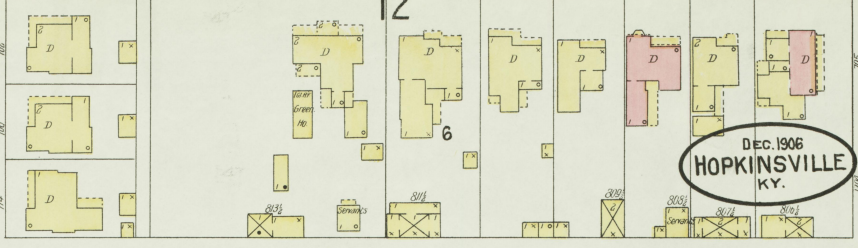
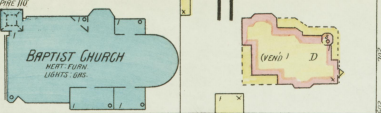
E. 17TH ST.

S. CLAY

S. CLAY

S. MAIN

S. VIRGINIA

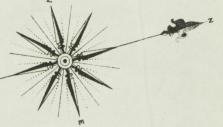


Map Printed
JULY 15
Library of Congress

20

17

DEC. 1906
HOPKINSVILLE
KY.



CANTON

R. E. COOPER
TOBACCO
RE-HANDLING Hq.

O. A. ELLIOTT
TOBACCO RE-HANDLING Hq.

Cemetery

ST.

ST.

69

117

College Campus

BETHEL FEMALE COLLEGE.
HEAT STOVES AND OPEN GRATES LIGHTS
ELECTRIC & CITY SIGNALS, EXTERIOR LIGHTS

S. WATER

ST.
W. 15TH
W. 14TH

11

Scale of Feet.
0 50 100 150

69

68

S. MAIN

16

D.H.

18

Map District
31 JUL 1935
Library of Congress

95-944

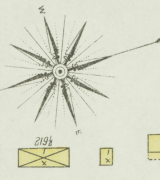
Dec. 1906
HOPKINSVILLE
KY.

18

229

17
RITTEN
ST.

16
MAIN



316

317

ST.

HIGH

319

HIGH

ST.

W. 19TH

W. 18TH

ST.

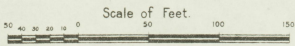
W. 20TH

STREET (NO NAME)

320

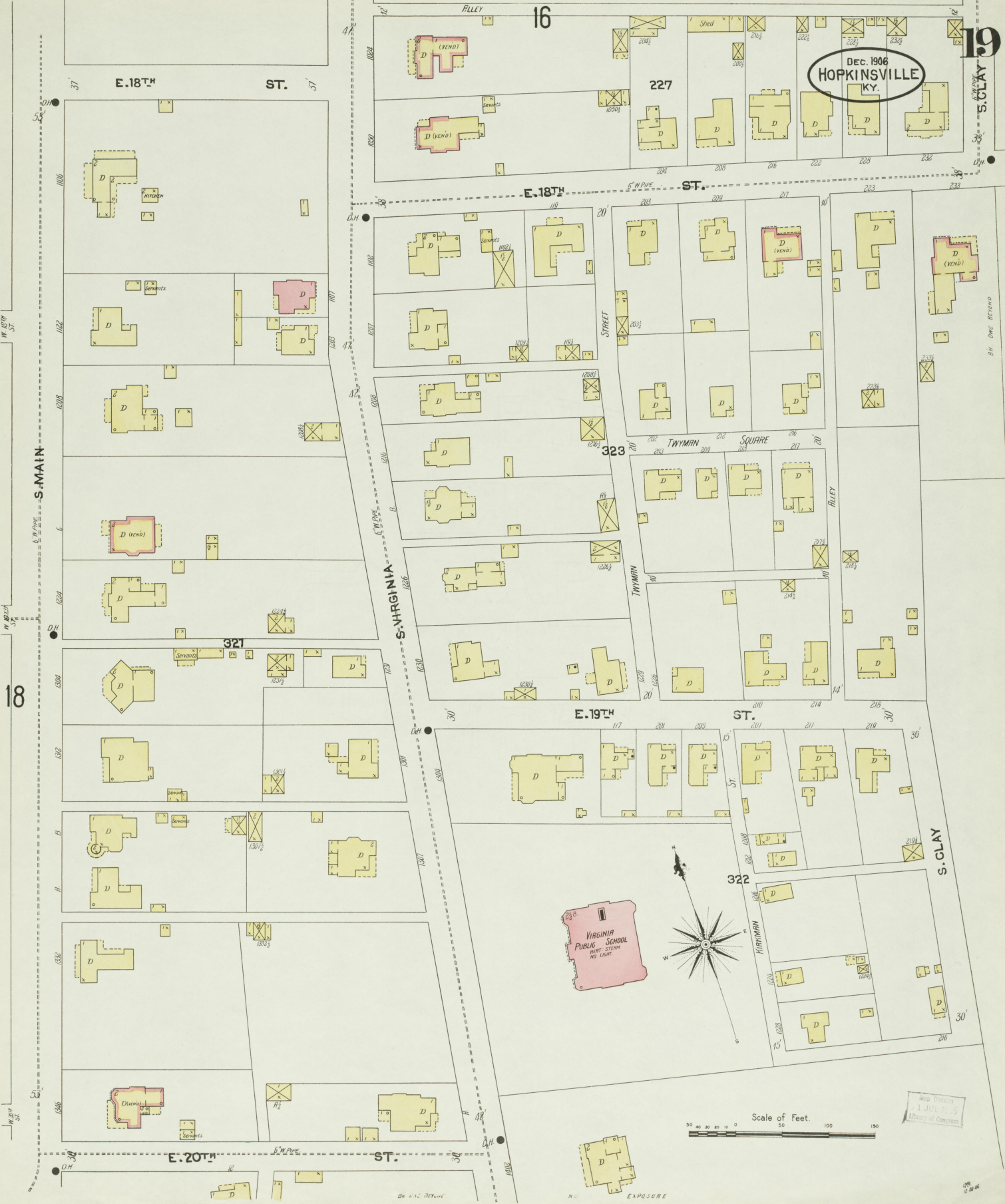
S. MAIN

19

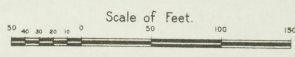
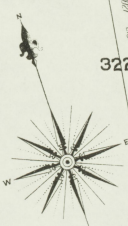


Map Division
J. J. 1-5
Library of Congress

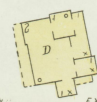
DEC. 1906
HOPKINSVILLE
KY.



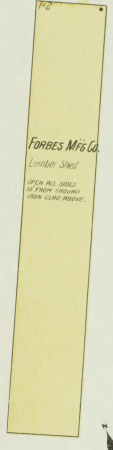
VIRGINIA
PUBLIC SCHOOL
HEAT STOVE
NO LIGHT



Map Printed
JUL 1905
by Deary & Company

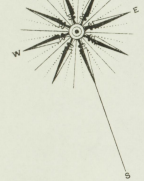
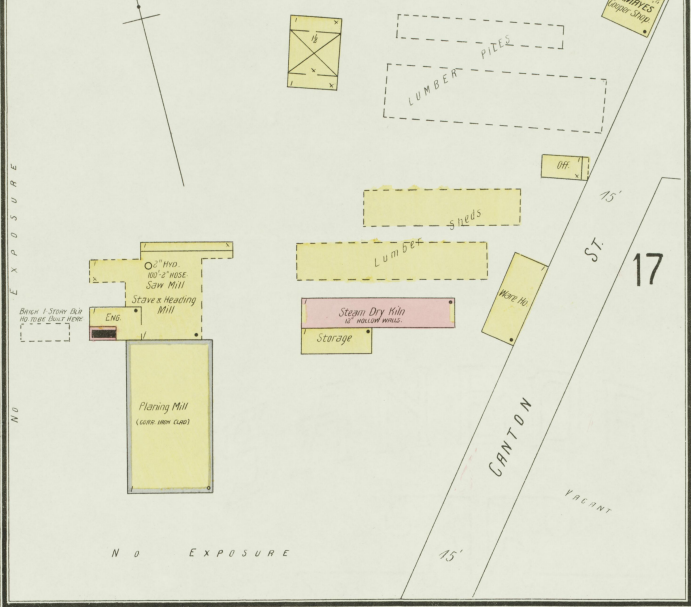


EXPOSURE



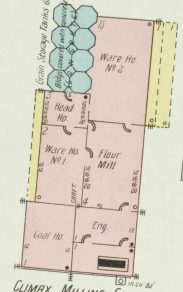
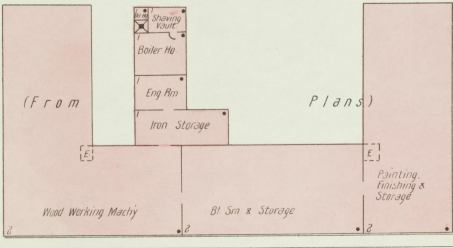
LUMBER YARD TO BE LENO OUT HERE

WALLACE & ADCOCK
PLANING MILL STAVE-HEADING WORKS

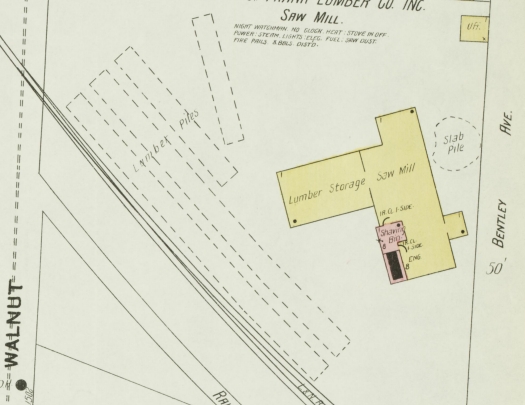
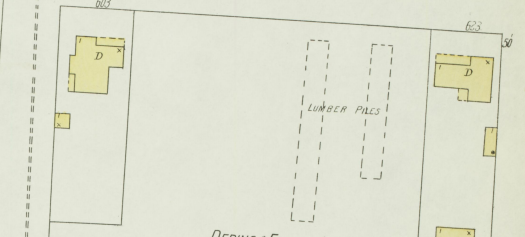


FORBES MANUFACTURING CO - WAGON WORKS.

HOT & POWER STEAM LIGHTS. SELECTIVE FIRE. COOK TO BE EQUIPPED WITH RULED SPRINKLING SYSTEM. FIRE SHOWN THROUGH PLANS. INCLUDING PROCESS OF ERECTION AT TIME OF SURVEY.



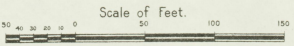
CLIMAX MILLING CO. (FROM PLANS) HOT & POWER STEAM LIGHTS. SELECTIVE FIRE. COOK TO BE EQUIPPED WITH RULED SPRINKLING SYSTEM. FIRE SHOWN THROUGH PLANS. INCLUDING PROCESS OF ERECTION AT TIME OF SURVEY.



AMERICAN SNUFF COMPANY

HOT & POWER STEAM LIGHTS. SELECTIVE FIRE. COOK TO BE EQUIPPED WITH RULED SPRINKLING SYSTEM. FIRE SHOWN THROUGH PLANS. INCLUDING PROCESS OF ERECTION AT TIME OF SURVEY.

327



Map drawn
31 JUL 1905
Library of Congress

22

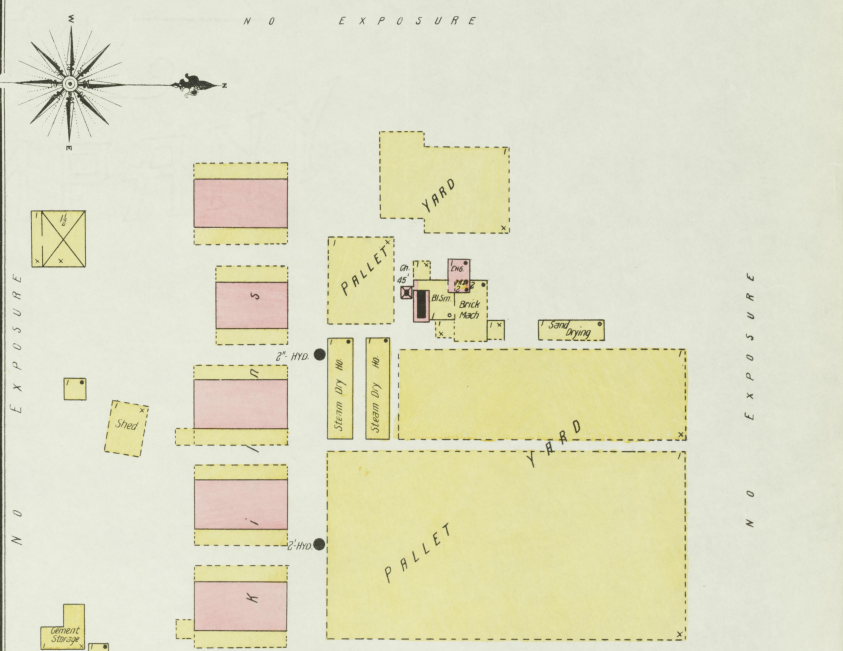
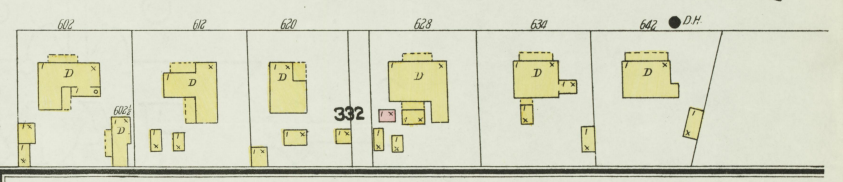
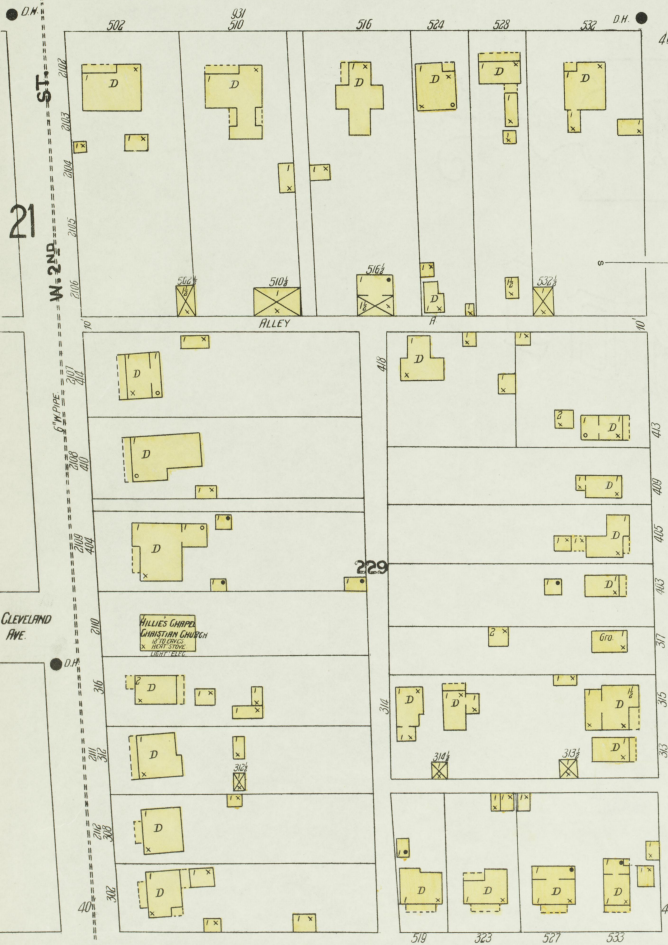
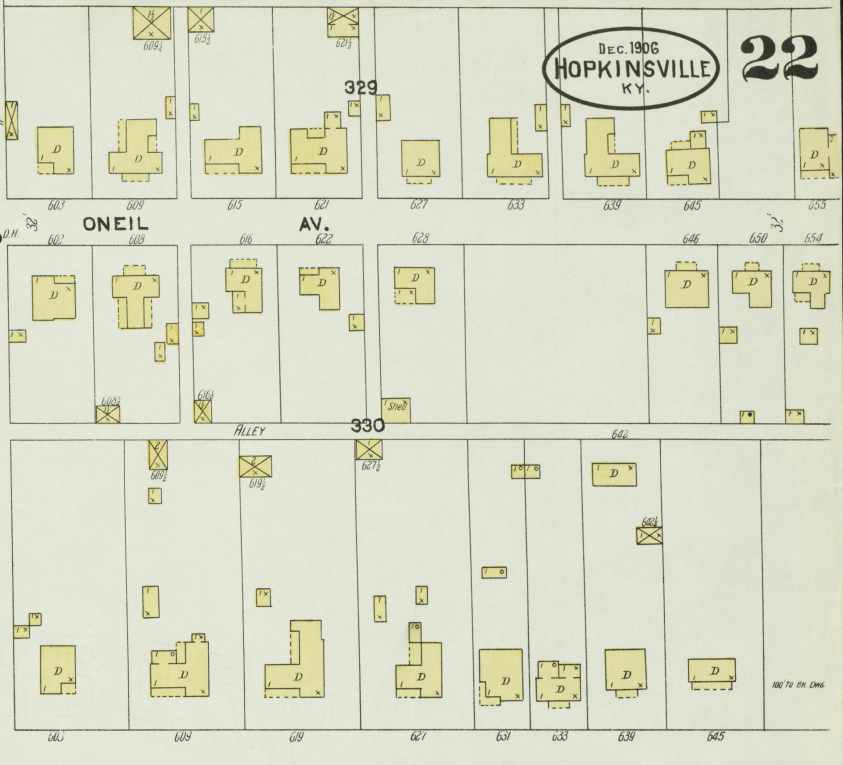
21

DEC. 1906
HOPKINSVILLE
KY.



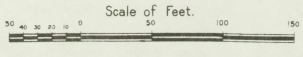
Scale of Feet.
0 50 100 150

Map 1076
41 JUL 1-3
Library of Congress

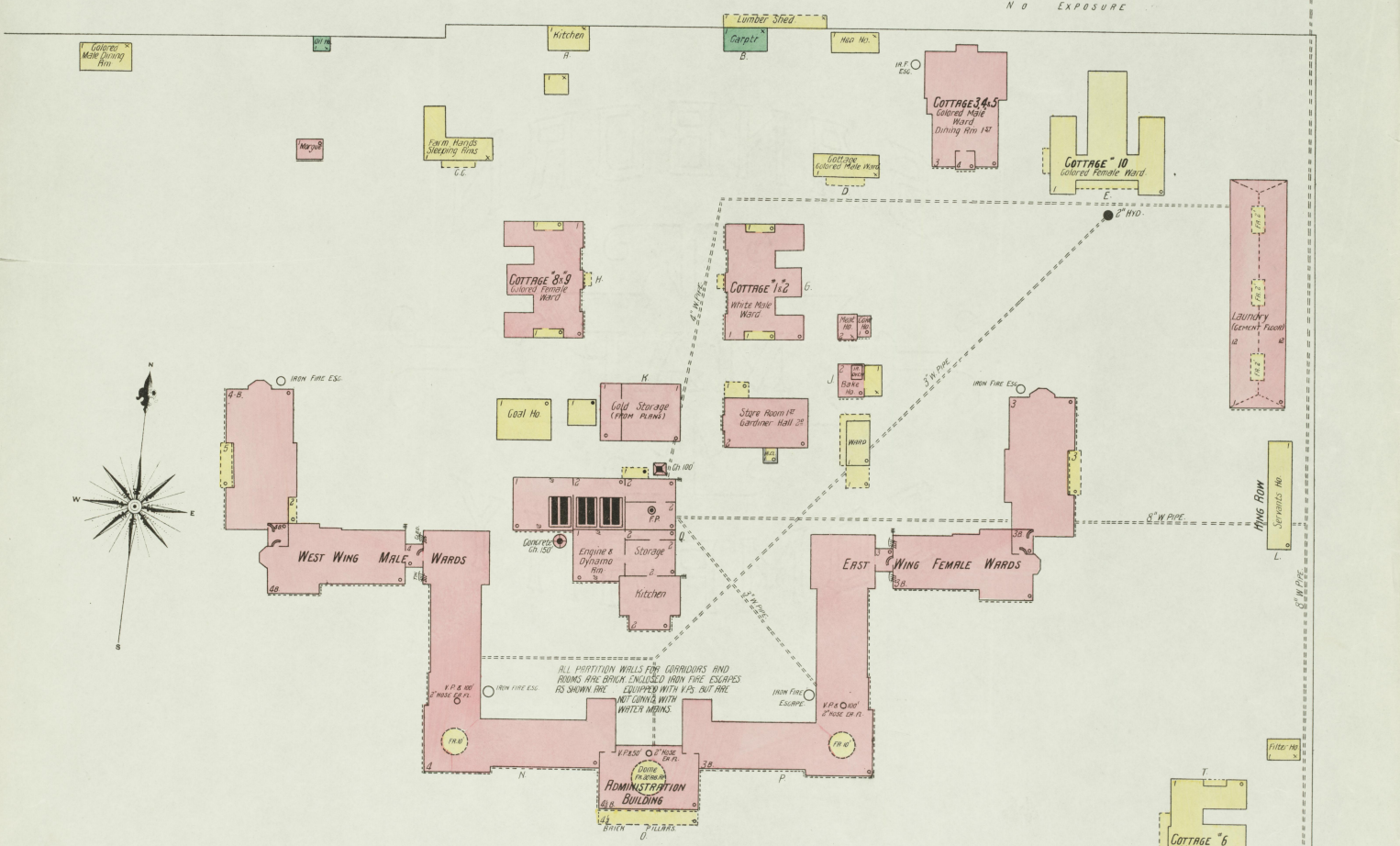
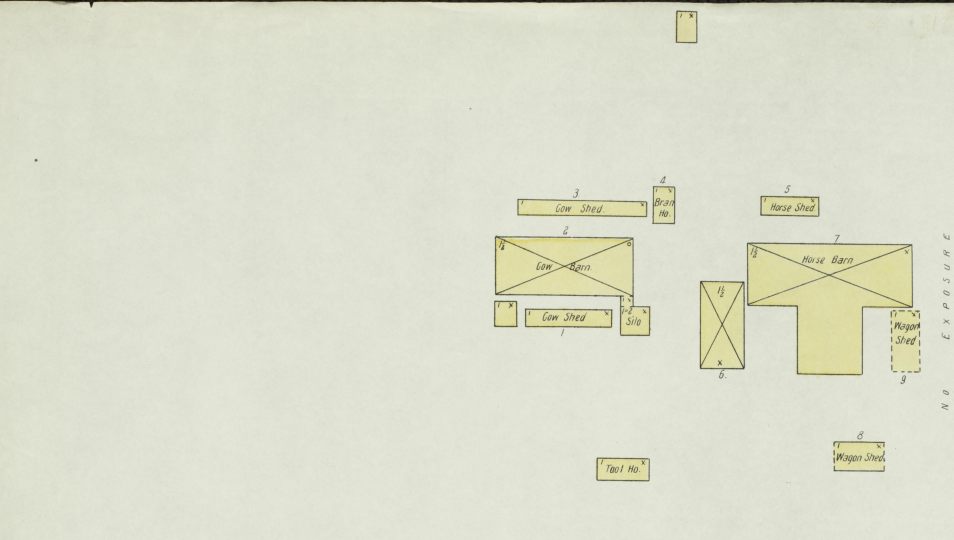
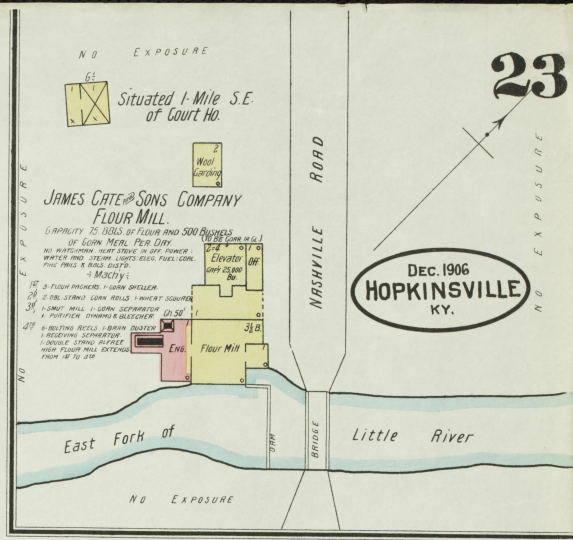


DALTON BROS BRICK YARD

BACK ON LEFT; FRONT AND SIDE IN SHARPLY SHOOTING PENCIL SKETCH.
 LIGHT - IN OIL PAINT; COLOR & SHADE TWO MYOS. AS SHOWN, GAINED WITH
 CITY WATER PUMP 100' 2" H2O.



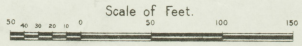
Map Printed
 31 JUL 1915
 Library of Congress



WESTERN KENTUCKY ASYLUM FOR THE INSANE

Situated 2-Miles East of Court No.

6 INSIDE & 6 OUTSIDE NIGHT WATCHMEN. NO CLOCK HEAT. STEAM LIGHTS. ELECTRIC FUEL COKE. WATER FROM SPRING A LITTLE RIVER 3 MILES S. OF ASYLUM IS PUMPED TO RESERVOIR 1 MILE N. OF ASYLUM BY SMITH VALLE DUPLEX PUMP. COPY OF PUMP 25,000 GALLONS IN 24 HOURS. AUXILIARY SMITH VALLE PUMP AT ASYLUM CAPY 10,000 GALS. IN 24 HOURS. CAPACITY OF RESERVOIR 300,000 GALS. ELEVATION 84. GIVING A GRAVITY PRESSURE OF 40 POUNDS PER SQ. INCH. PUMPING PRESSURE OF 65 POUNDS PER SQUARE INCH AT GROUND FLOOR OF ADMINISTRATION BUILDING.



Map Copy
 JUL 1
 Library of Congress