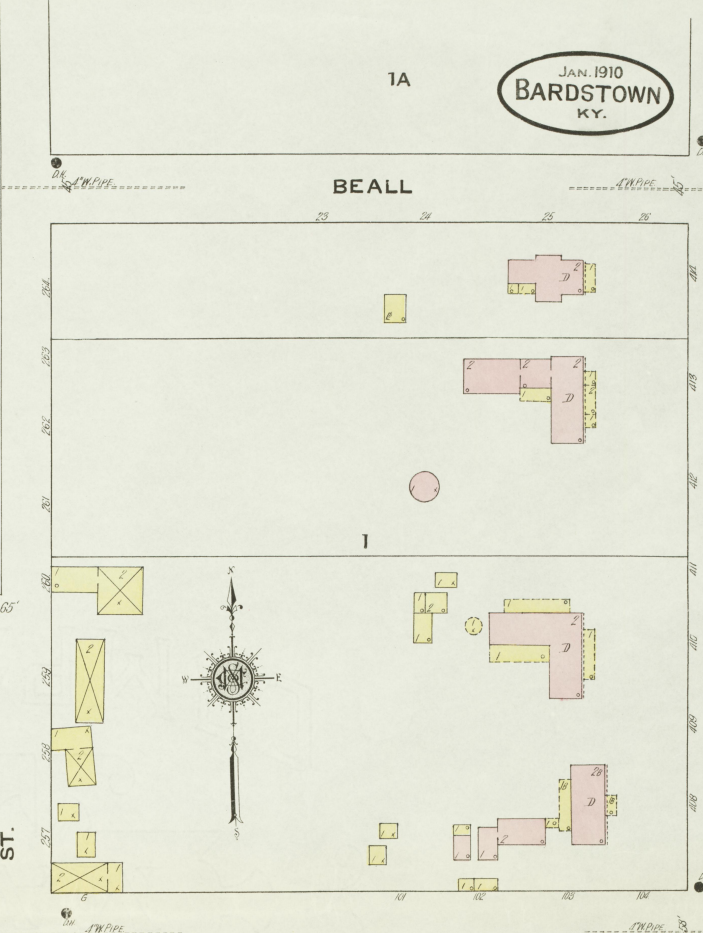


JAN. 1910
BARDSTOWN
KY.

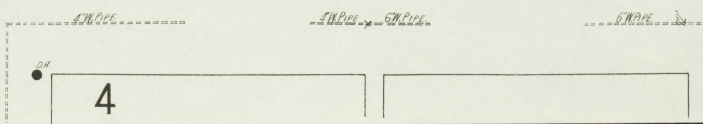
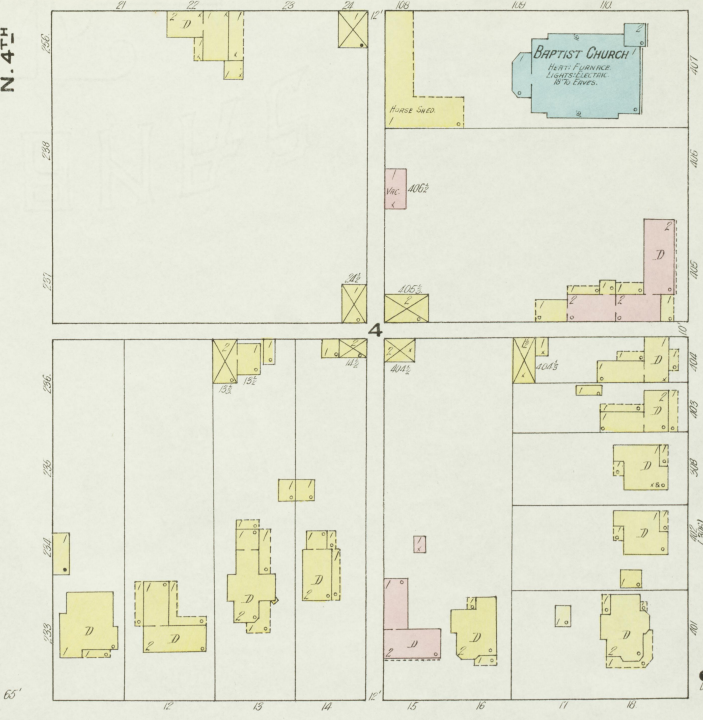
1A

BEALL



MAIN

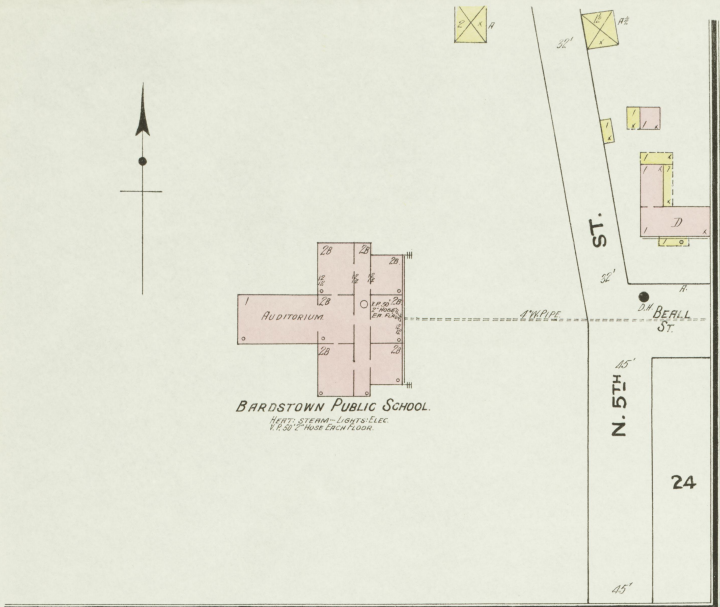
N 3RD



ST.

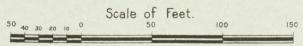
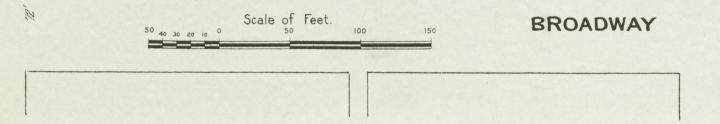
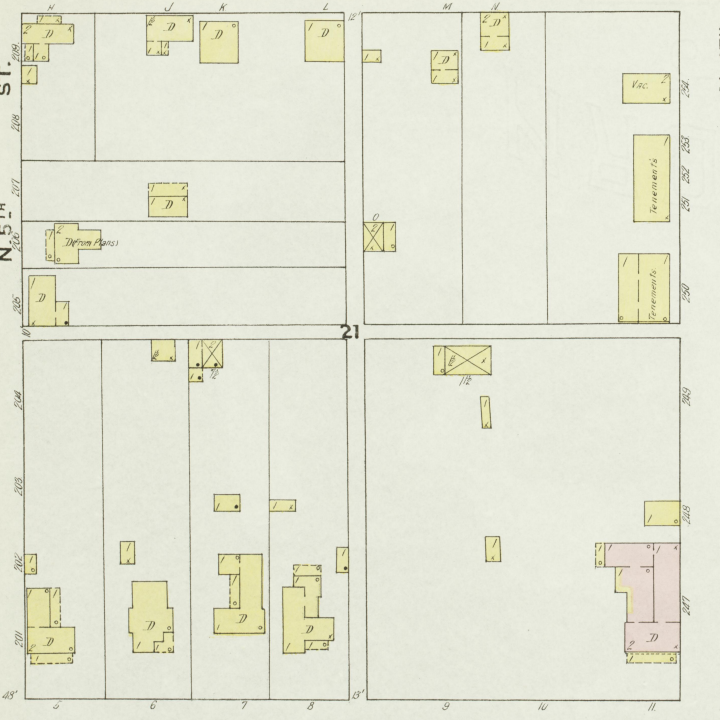
N. 5TH

24



BARDSTOWN PUBLIC SCHOOL
BERT S. HARR - LOUIS A. GLEZ.
1895 - 1905 - 5 FLOORS EACH FLOOR

CHESTNUT



BROADWAY

JAN 1910
BARDSTOWN
KY.

237Y BR. D. BEYOND.



N. 3RD
OR
MAIN

CHESTNUT

BROADWAY

5

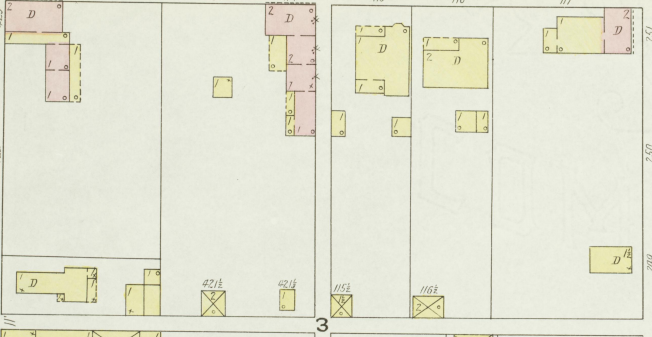
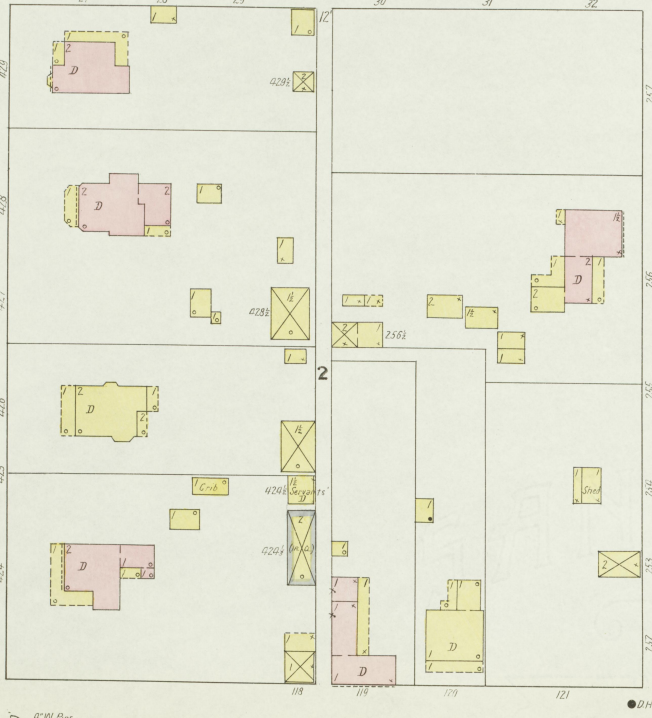
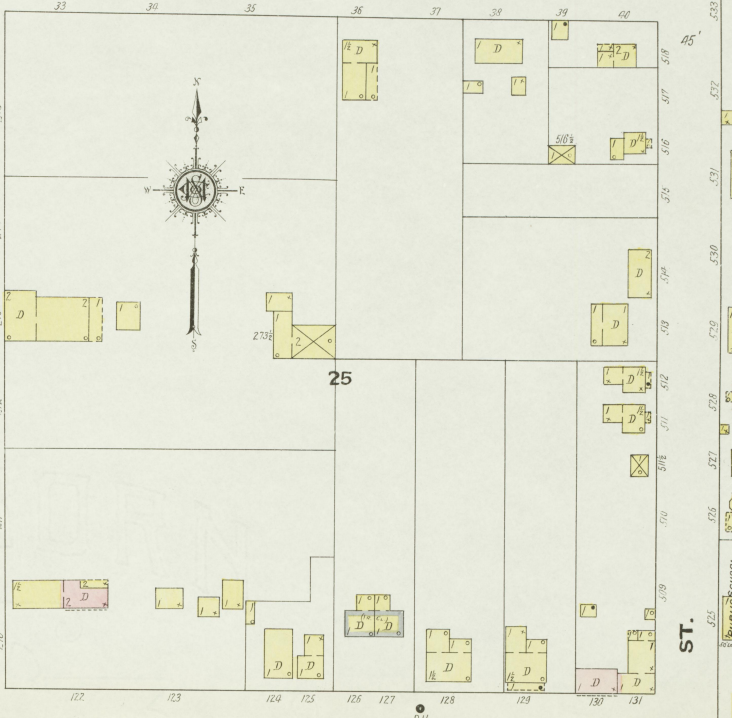
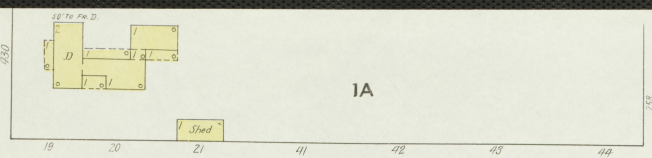
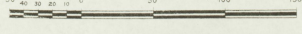
ST.

N. 2ND

10

N. 1ST

Scale of Feet.



FIRE DEPT.
STENNIS
LUM. TRUCK
3 HIDE CRYS.
HOOP WARE

BAPTIST CHURCH
COLORED
LIGHT-ELECTRIC

M.E. CHURCH
COLORED
LIGHT-ELECTRIC

OPERA HO.
MORT. FURNITURE
LIGHT-ELECTRIC

Wagon Carriage
Shed

Wagon
Shed

Wagon
Shed

Wagon
Shed

Wagon
Shed

Wagon
Shed

Wagon
Shed

Wagon
Shed

Wagon
Shed

Wagon
Shed

Wagon
Shed

Wagon
Shed

Wagon
Shed

Wagon
Shed

Wagon
Shed

Wagon
Shed

Wagon
Shed

Wagon
Shed

Wagon
Shed

Wagon
Shed

Wagon
Shed

Wagon
Shed

Wagon
Shed

Wagon
Shed

Wagon
Shed

Wagon
Shed

Wagon
Shed

Wagon
Shed

Wagon
Shed

Wagon
Shed

Wagon
Shed

Wagon
Shed

Wagon
Shed

Wagon
Shed

Wagon
Shed

Wagon
Shed

Wagon
Shed

Wagon
Shed

Wagon
Shed

Wagon
Shed

Wagon
Shed

Wagon
Shed

Wagon
Shed

Wagon
Shed

Wagon
Shed

Wagon
Shed

Wagon
Shed

Wagon
Shed

Wagon
Shed

Wagon
Shed

Wagon
Shed

Wagon
Shed

Wagon
Shed

Wagon
Shed

Wagon
Shed

Wagon
Shed

Wagon
Shed

Wagon
Shed

Wagon
Shed

Wagon
Shed

Wagon
Shed

Wagon
Shed

Wagon
Shed

Wagon
Shed

Wagon
Shed

Wagon
Shed

Wagon
Shed

Wagon
Shed

Wagon
Shed

Wagon
Shed

Wagon
Shed

Wagon
Shed

Wagon
Shed

Wagon
Shed

Wagon
Shed

Wagon
Shed

Wagon
Shed

Wagon
Shed

Wagon
Shed

Wagon
Shed

Wagon
Shed

Wagon
Shed

Wagon
Shed

Wagon
Shed

Wagon
Shed

Wagon
Shed

Wagon
Shed

Wagon
Shed

Wagon
Shed

Wagon
Shed

Wagon
Shed

Wagon
Shed

Wagon
Shed

Wagon
Shed

Wagon
Shed

Wagon
Shed

Wagon
Shed

Wagon
Shed

Wagon
Shed

Wagon
Shed

Wagon
Shed

Wagon
Shed

Wagon
Shed

Wagon
Shed

Wagon
Shed

Wagon
Shed

Wagon
Shed

Wagon
Shed

Wagon
Shed

Wagon
Shed

Wagon
Shed

Wagon
Shed

Wagon
Shed

Wagon
Shed

Wagon
Shed

Wagon
Shed

Wagon
Shed

Wagon
Shed

Wagon
Shed

Wagon
Shed

Wagon
Shed

Wagon
Shed

Wagon
Shed

Wagon
Shed

Wagon
Shed

Wagon
Shed

Wagon
Shed

Wagon
Shed

Wagon
Shed

Wagon
Shed

Wagon
Shed

Wagon
Shed

Wagon
Shed

Wagon
Shed

Wagon
Shed

Wagon
Shed

Wagon
Shed

Wagon
Shed

Wagon
Shed

Wagon
Shed

Wagon
Shed

Wagon
Shed

Wagon
Shed

Wagon
Shed

Wagon
Shed

Wagon
Shed

Wagon
Shed

Wagon
Shed

Wagon
Shed

Wagon
Shed

Wagon
Shed

Wagon
Shed

Wagon
Shed

Wagon
Shed

Wagon
Shed

Wagon
Shed

Wagon
Shed

Wagon
Shed

Wagon
Shed

Wagon
Shed

Wagon
Shed

Wagon
Shed

Wagon
Shed

Wagon
Shed

Wagon
Shed

Wagon
Shed

Wagon
Shed

Wagon
Shed

Wagon
Shed

Wagon
Shed

Wagon
Shed

Wagon
Shed

Wagon
Shed

Wagon
Shed

Wagon
Shed

Wagon
Shed

Wagon
Shed

Wagon
Shed

Wagon
Shed

Wagon
Shed

Wagon
Shed

Wagon
Shed

Wagon
Shed

Wagon
Shed

Wagon
Shed

Wagon
Shed

Wagon
Shed

Wagon
Shed

Wagon
Shed

Wagon
Shed

Wagon
Shed

Wagon
Shed

Wagon
Shed

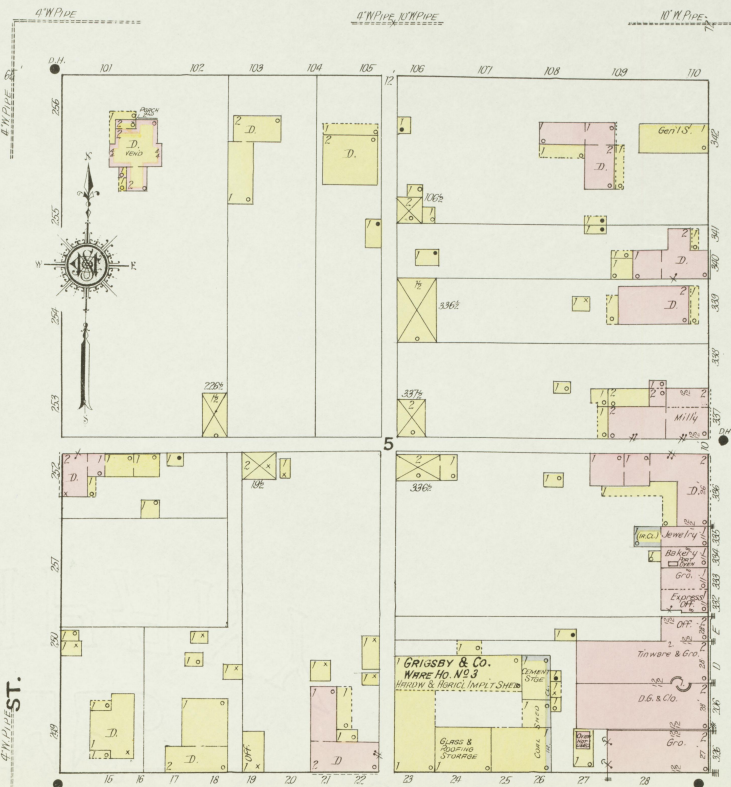
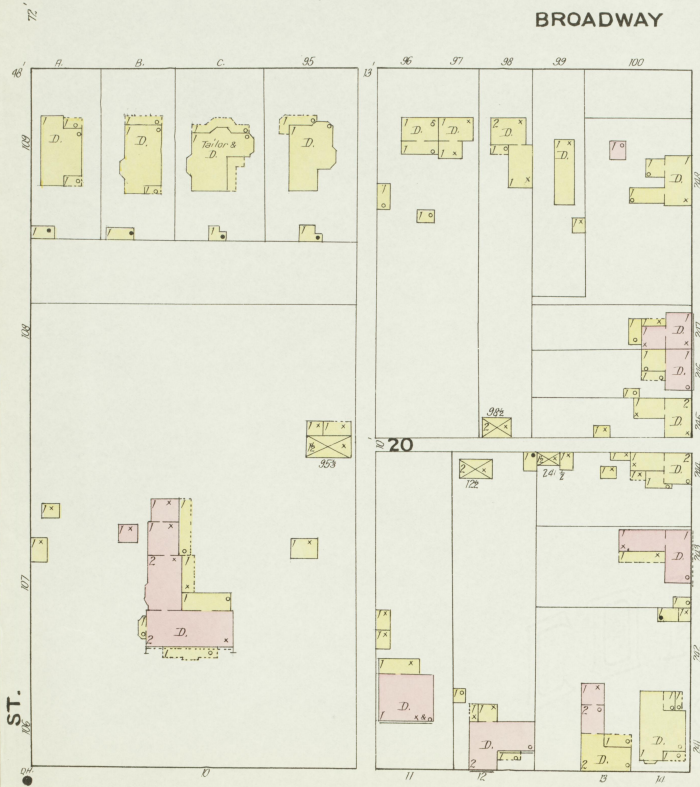
Wagon
Shed

Wagon
Shed

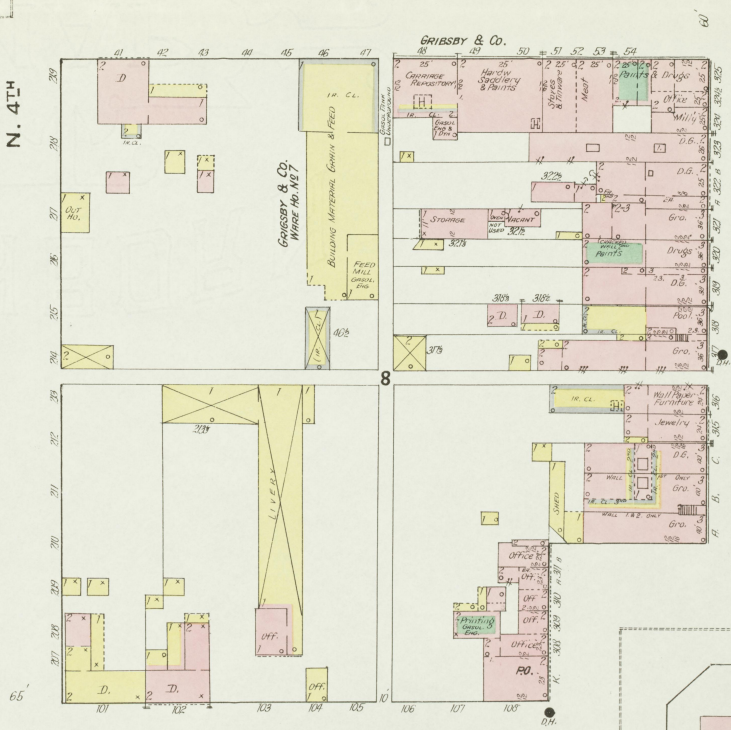
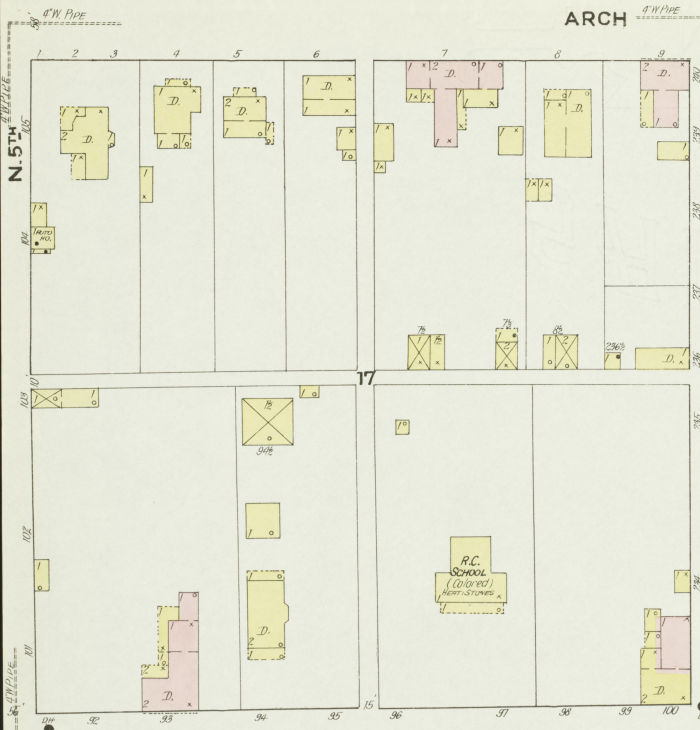
Wagon
Shed

Wagon
Shed

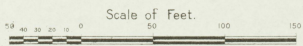
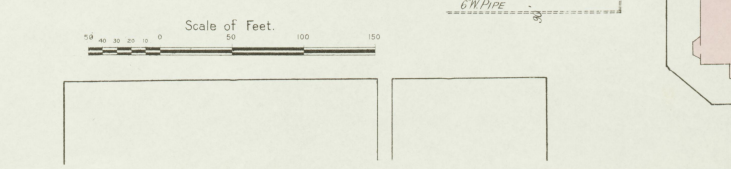
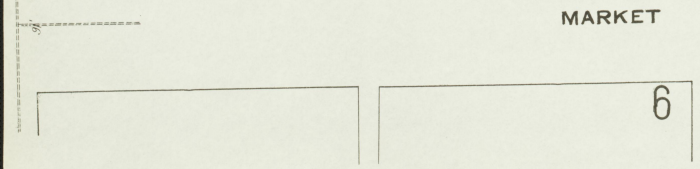
BROADWAY



ARCH



MARKET



MAIN
OR
N. 3RD

JAN 1910
BARDSTOWN
KY.

BROADWAY

3

5

10

ST.

ST.

ARCH

N. 2ND

N. 1ST

MARKET

Scale of Feet.
0 50 100 150



4

6

MARKET

NEWMAN HO.
HEAT STOVE & LUMBER LIGHT
ELECTRIC & COAL ESTABLISHMENTS
121 122 123

JAN. 1910
BARDSTOWN
KY.

SISCO & Co.
CARRIAGE SHOP

Livery

CEMETERY

MAIN

GRAVES

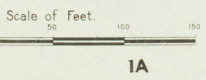
S. 4TH

S. 3RD

7

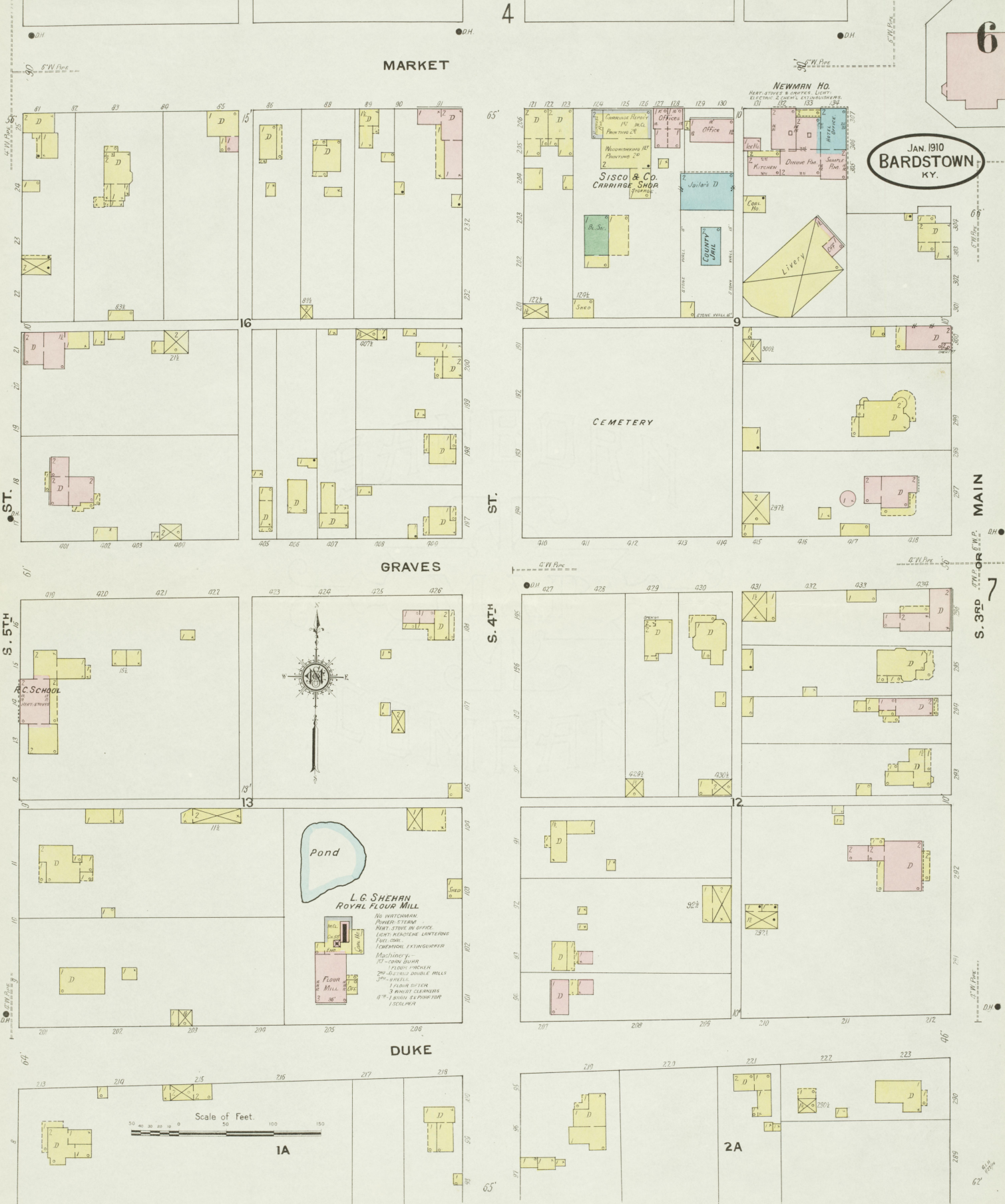
Pond
L. G. SHEHAN
ROYAL FLOUR MILL
NO WATCHMAN
PUMPER-STEAM
HEAT-STEVE IN OFFICE
LIGHT-KEROSENE LANTERNS
FUEL-OIL
FIREWORKS-EXTINGUISHER
MACHINERY-
12'-STONE GRIND
FLOUR-PARCHER
200-300-POUND DOUBLE MILLS
5'-WHEELS
FLOUR-DISHER
3-ROAST-CLEANERS
10"-1-ROAST-OR-PURIFIER
1-SCALE-TRAY

DUKE



1A

2A



NELSON COUNTY COURT HO
1651 5 TERM
LIGHTS ELEC.
BY ARCHES CELLING
642

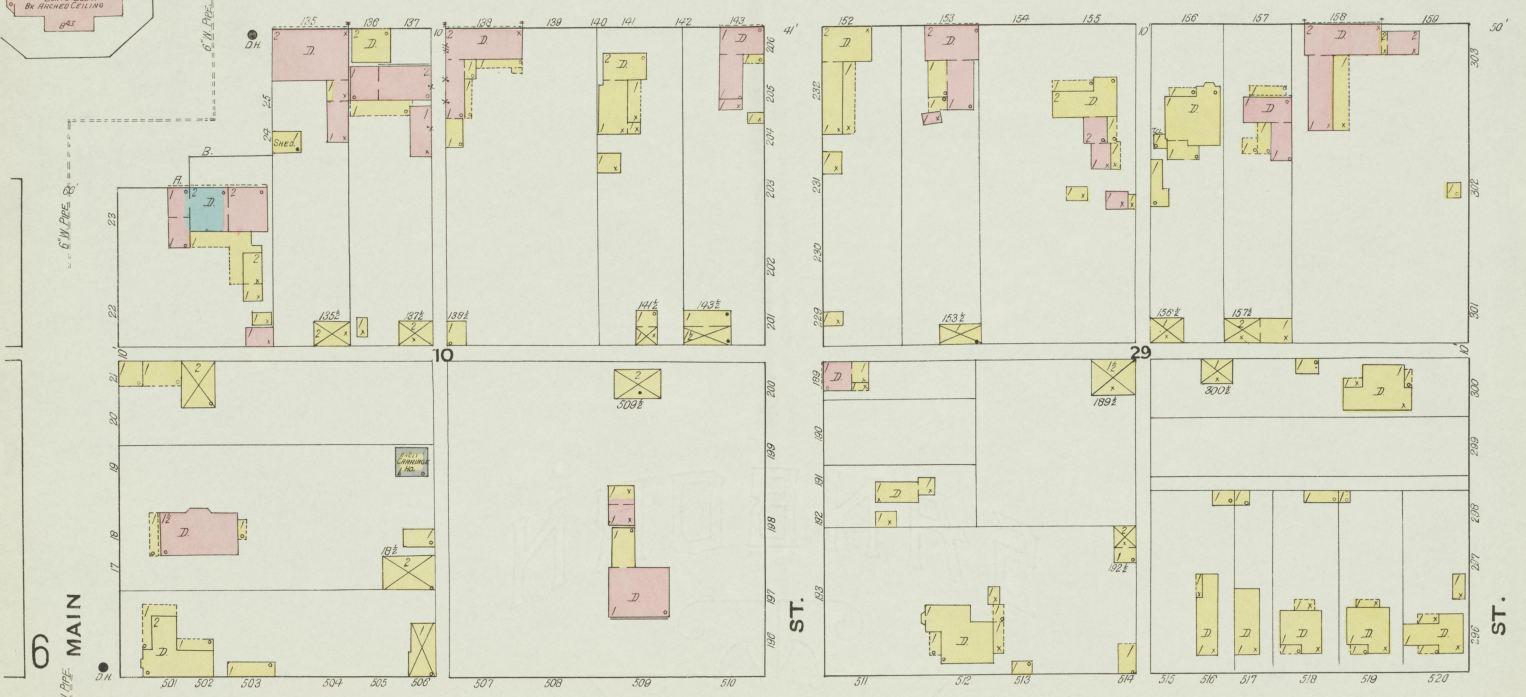
5

7

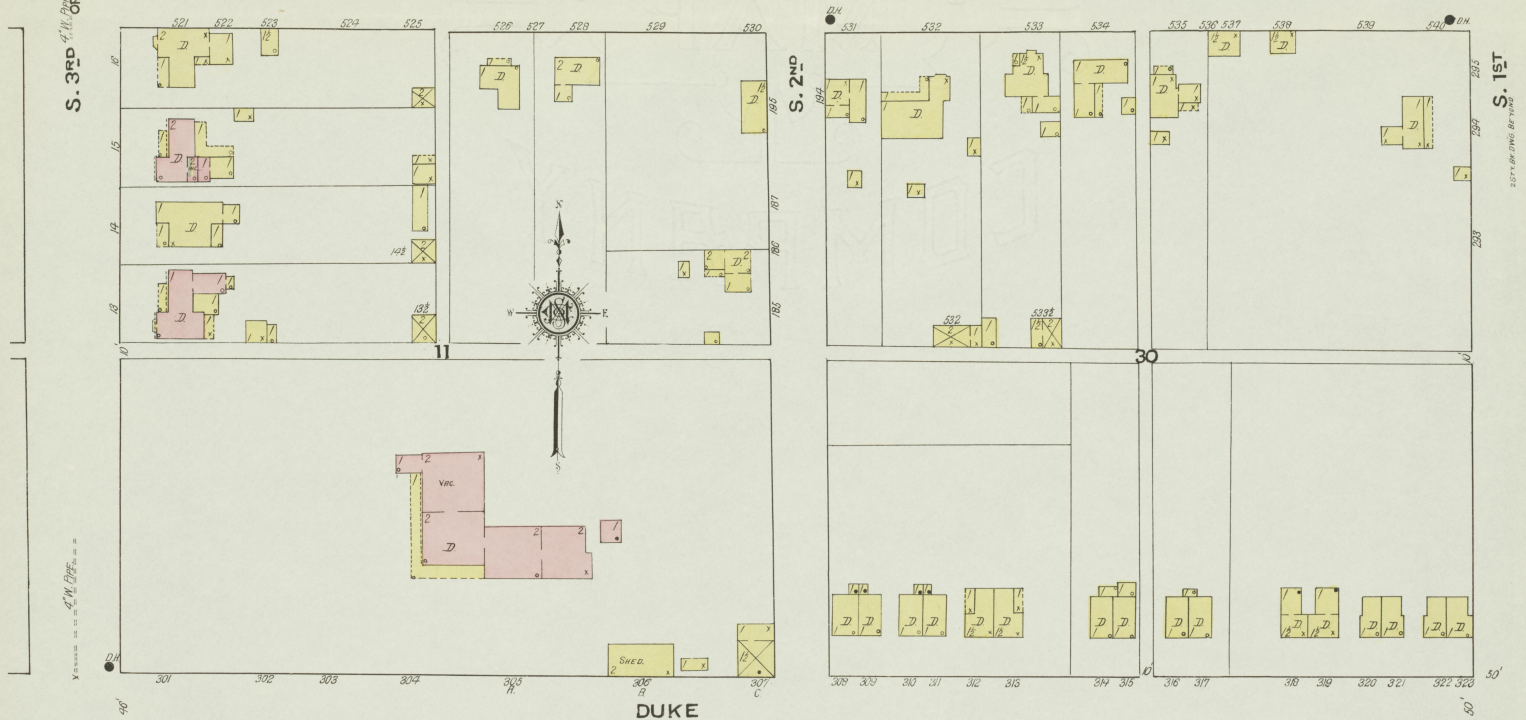
JAN. 1910
BARDSTOWN
KY.

MARKET 6" W. PIPE

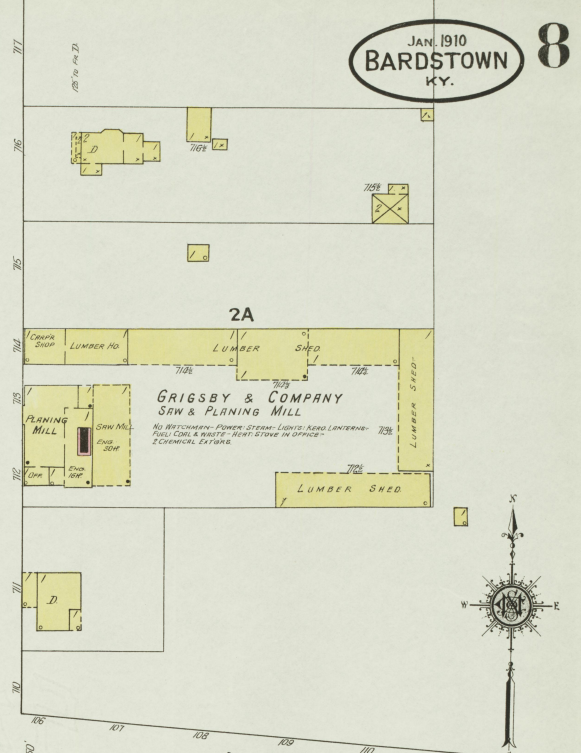
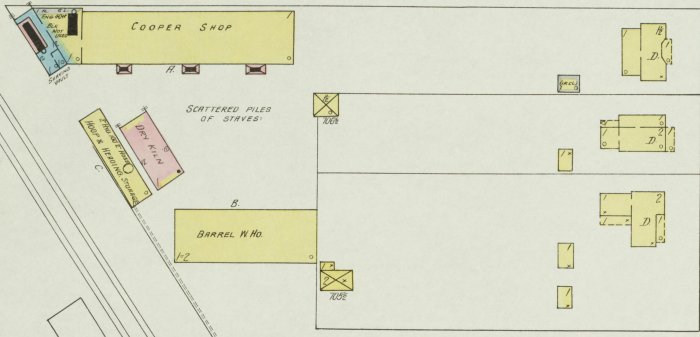
4" W. PIPE



GRAVES



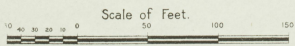
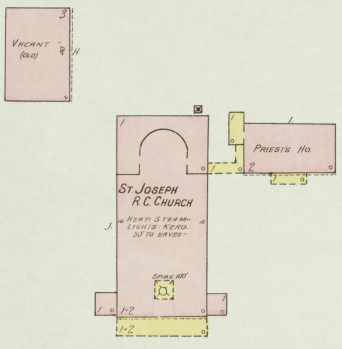
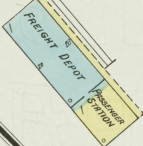
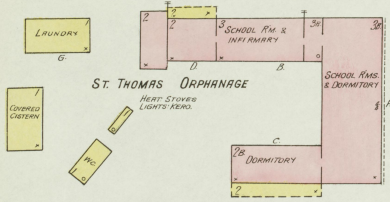
DISTILLERIES COOPERAGE CO
COOPER SHOP
WIGHT MATCHES - 10 CLICK - POWER STEAM
HEAT - STEAM IN DRY MILK - LIGHTS - KERO LAMPS
FUEL COAL - CITY WATER - 2 HYD. PUMP HOSE
FIRE PILES & BRIDGES



O'BRYAN AV.

O'BRYAN AV.

N. 3RD or MAIN



MARKET

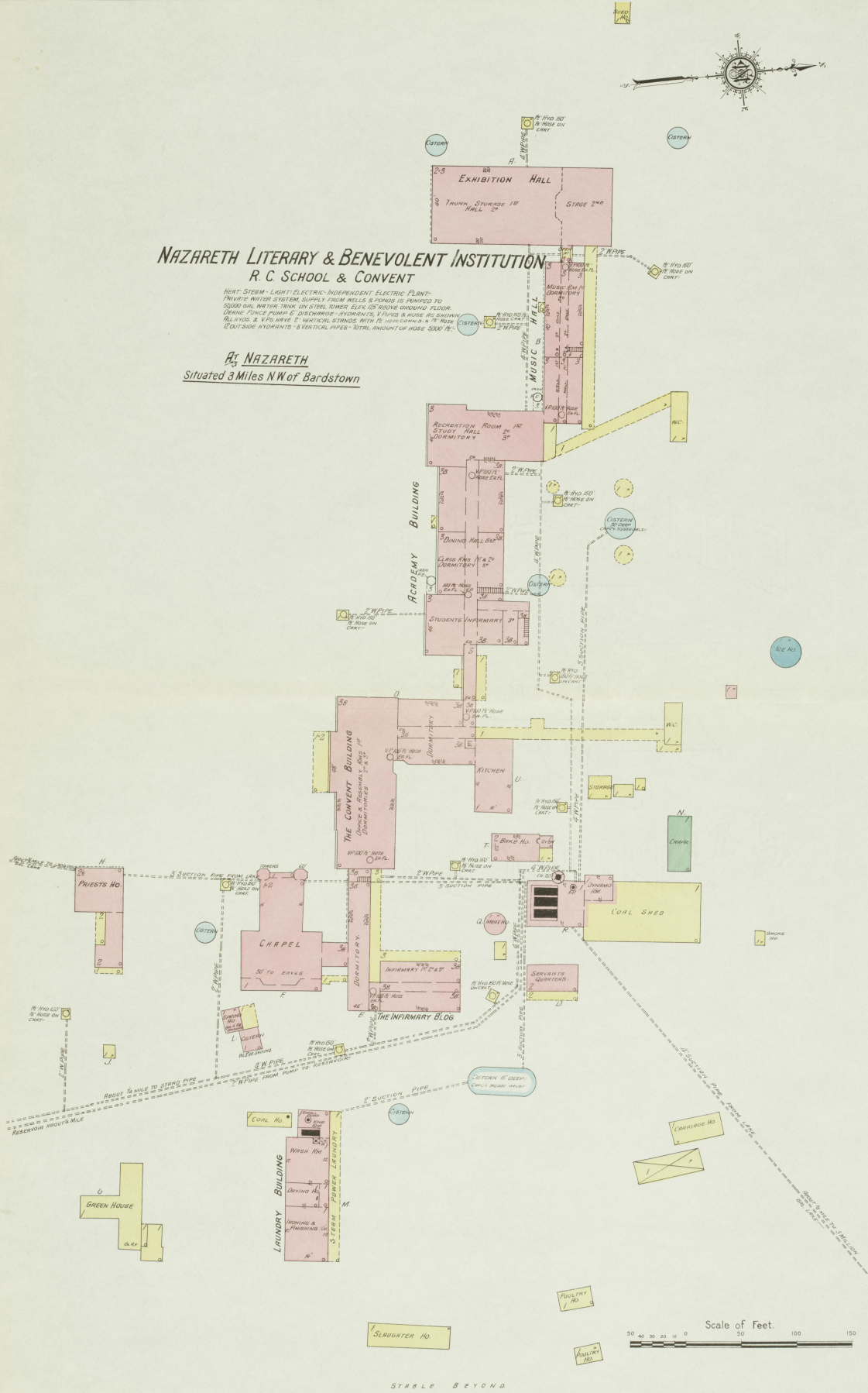
30'

7'

NAZARETH LITERARY & BENEVOLENT INSTITUTION
 R. C. SCHOOL & CONVENT

HEAT-STEAM-LIGHT-ELECTRIC-INDPENDENT ELECTRIC PLANT-
 PRIVATE WATER SYSTEM, SUPPLY FROM WELLS & PUMPS IS PUMPED TO
 STORAGE TANK ON STEEL TOWER 60 FEET ABOVE GROUND FLOOR.
 DRAINAGE PUMP & DISCHARGE- HYDRANTS, PIPES & ROSE AS SHOWN.
 TELEPHONE & WIRE WIRE 2" VERTICAL STRINGS WITH 12" HORIZONTAL & 1" ROSE
 OUTSIDE HYDRANTS- 8 VERTICAL PIPES- TOTAL AMOUNT OF ROSE 5000' LB.

At NAZARETH
 Situated 3 Miles NW of Bardstown



N. M. URI
 FORMERLY MC GEE & STONER
 GWYN SPRING DISTILLING CO
 BEAM & MOORE
 CRAIGLER & CRAIGLER
 M'GEE & BEAM
 THOS S. MOORE & D.D. BEAM
 AS SILAS JONES DISTILLING CO.
 Registered Distillery No. 371
 5th District Nelson Co. Ky.

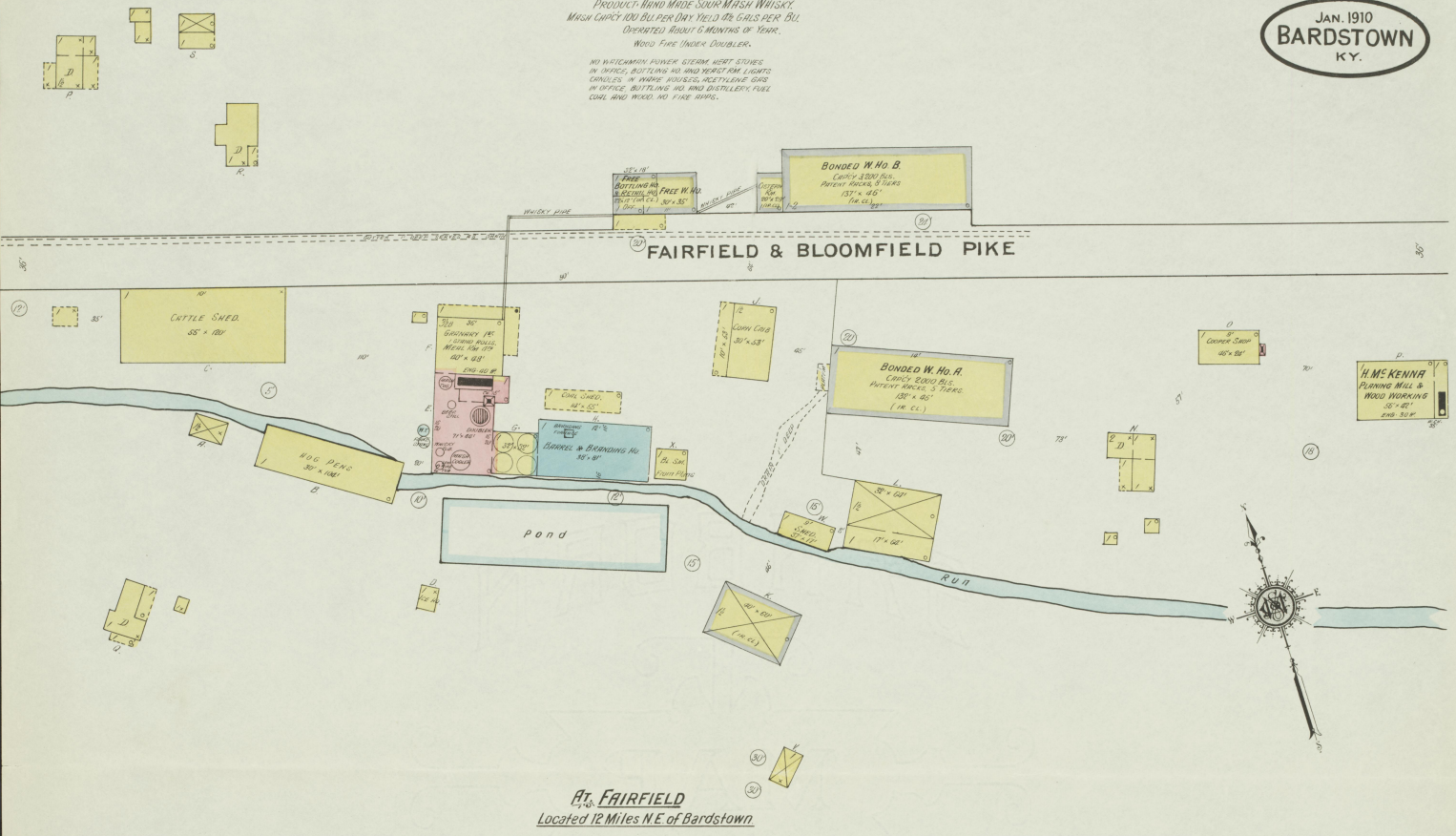
PRODUCT WIND MADE S.O.A. MASH BOURBON WHISKY
 MASH CAPCY 50 BUS PER DAY, YIELD 8 GALS PER BU.
 STEAM DOUBLER.
 NOT IN OPERATION SINCE 1908, SMALL AMOUNT OF
 WHISKY IN WARE HO.
 NO WATCHMAN- POWER, STEAM, NO LIGHTS.
 HEAT-STEAM IN OFFICE- FUEL COAL- NO FINE PAPER.
 BURNING WHISKY FROM W. HO- WOULD PROBABLY
 NOT EXPOSE DISTILLERY.

Situated 3 1/2 Miles N of Bardstown

H. Mc Kenna
Registered Distillery No. 111, 5th District, Nelson Co., Ky.

PRODUCT: HAND MADE SOUR MASH WHISKY
MASH CAPACITY 400 BUS PER DAY. YIELD 425 GALS PER BU.
OPERATED ABOUT 6 MONTHS OF YEAR.
WOOD FIRE UNDER DOUBLER.
NO WATCHMAN. FURNER. COOKING HEAT STONES
IN OFFICE. BOTTLING NO. AND VERT. FOR LIGHTS
CANDLES IN WARE HOUSES. METALLIC GAS
IN OFFICE. BOTTLING NO. AND DISTILLING FUEL
COAL AND WOOD. NO FIRE RISKS.

JAN. 1910
BARDSTOWN
KY.

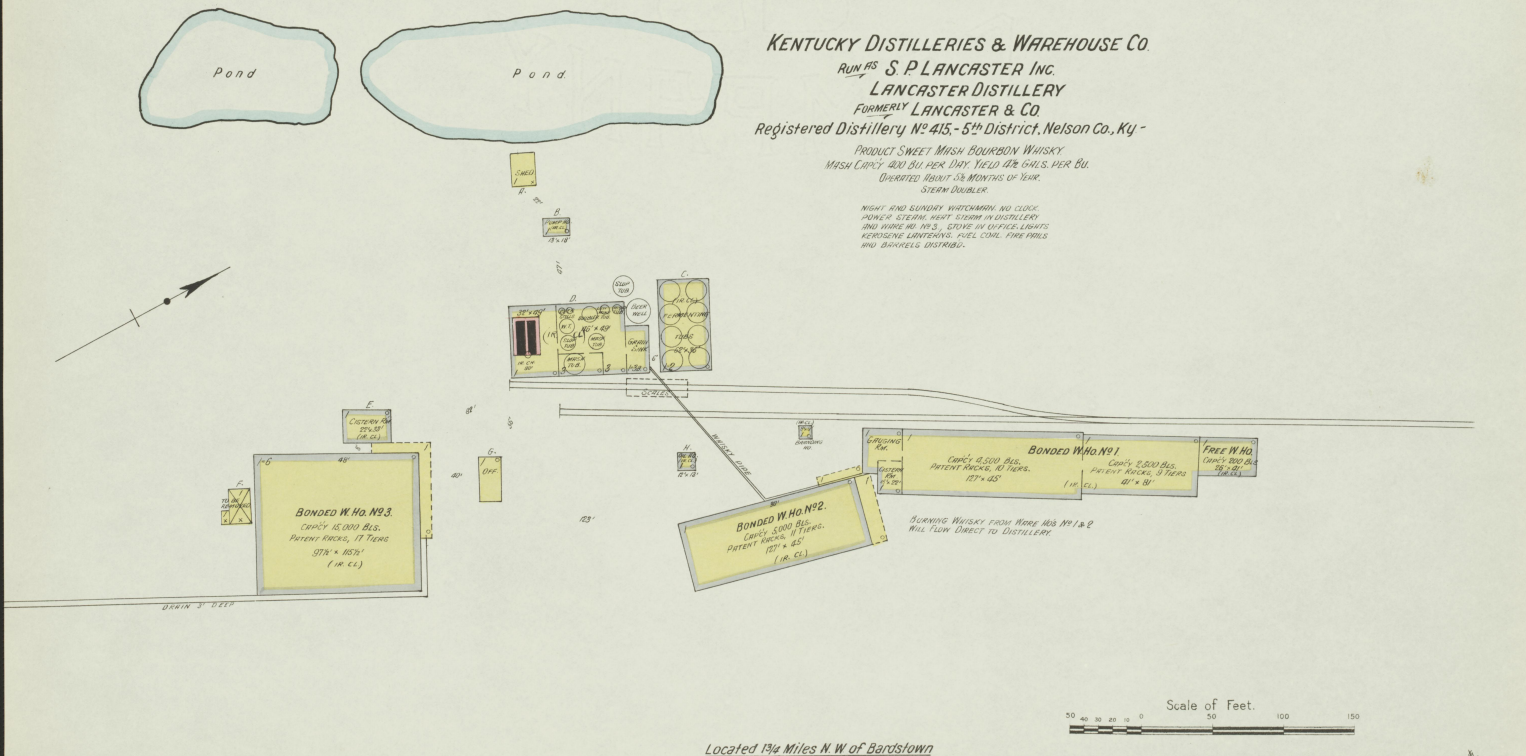


At FAIRFIELD
Located 12 Miles N.E. of Bardstown.

KENTUCKY DISTILLERIES & WAREHOUSE CO
RUN BY S. P. LANCASTER INC.
LANCASTER DISTILLERY
FORMERLY LANCASTER & CO
Registered Distillery No. 415, 5th District, Nelson Co., Ky.

PRODUCT: SWEET MASH BOURBON WHISKY
MASH CAPACITY 400 BUS PER DAY. YIELD 475 GALS. PER BU.
OPERATED ABOUT 5 1/2 MONTHS OF YEAR.
STEAM DOUBLER.

NIGHT AND SUNDAY WATCHMAN. NO COOK.
POWER STEAM. HEAT STONES IN DISTILLERY
AND WAREHOUSE. STORE IN OFFICE. LIGHTS
KEROSENE LANTERNS. FUEL COAL. FIRE RISKS
AND DANGERS DISTRICT.



Located 1 3/4 Miles N.W. of Bardstown

Scale of Feet.
0 50 100 150



EARLY TIMES DISTILLERY
 J. H. BEAM PROP'R.
 FORMERLY EARLY TIMES DISTILLERY CO.
 ALSO J. H. BEAM & CO.
 Registered Distillery No. 7, - 5th District, Nelson Co., Ky.

PRODUCT BOURBON SOUR MASH WHISKY
 MASH CAP'Y 600 BUSH PER DAY. YIELD 42 GALS PER BU.
 RUN ABOUT 7 MONTHS OF YEAR.
 STEAM DOUBLER.

NIGHT WATCHMAN, NO CLOCK, POWER STEAM
 HEAT, STEAM IN WARE HOUSES, C AND D.
 STORES IN OFFICE, REST ROOM, AND BOTTLING
 NO LIGHTS, KEROSENE AND KIND OF LAMPERS
 FUEL COAL, TWO 10'S GARDEN PUMPS, 100'
 1/4" HOSE, TWO CHEMICAL EXTING.

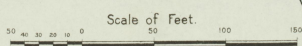
SUGAR VALLEY DISTILLING CO.
 B. M. CLASKEY & SON.
 FORMERLY BROOKS & M. CLASKEY
 Registered Distillery No. 442,
 5th District, Nelson Co., Ky.

PRODUCT BOURBON & RYE SOUR MASH WHISKY
 MASH CAP'Y 50 BU PER DAY. YIELD 76 GALS PER BU.
 RUN ABOUT 5 MONTHS OF YEAR.
 FIRE UNDER DOUBLER -

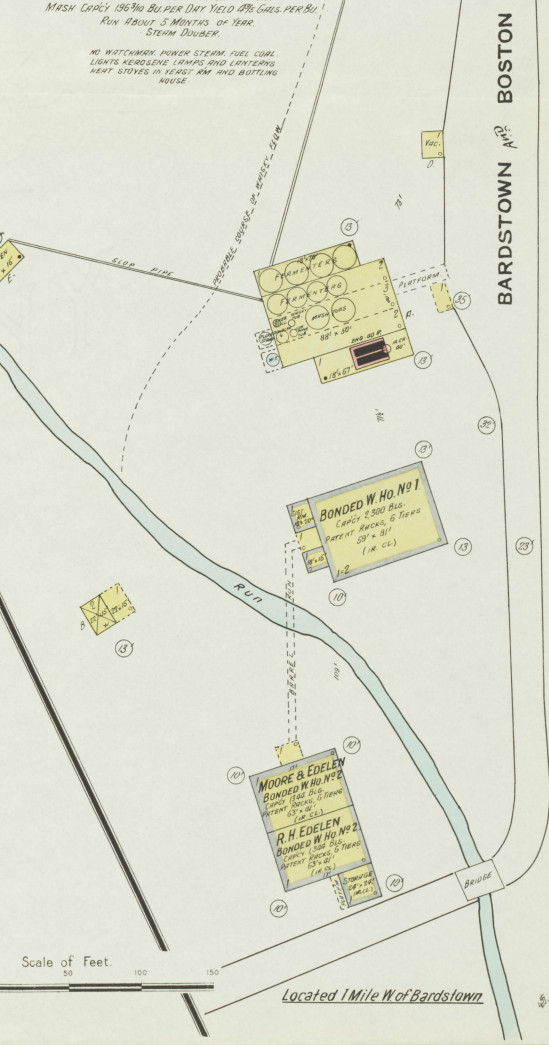
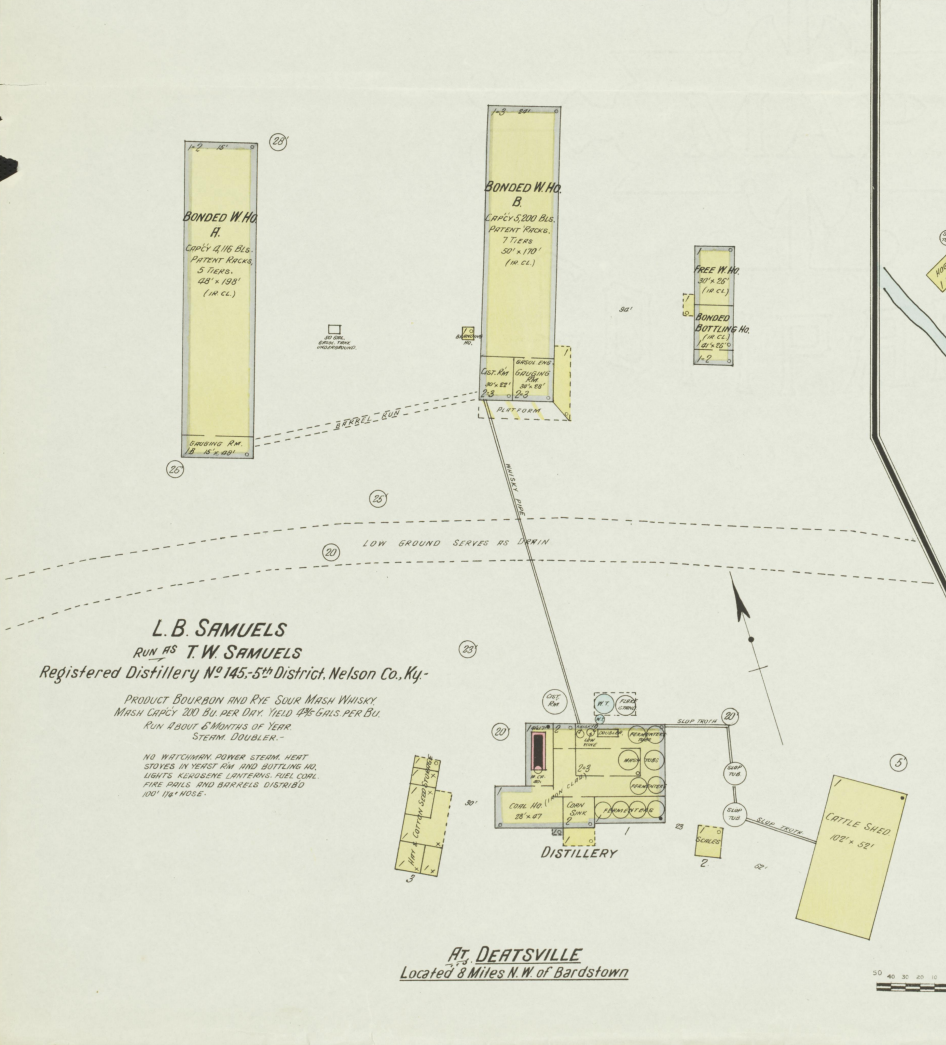
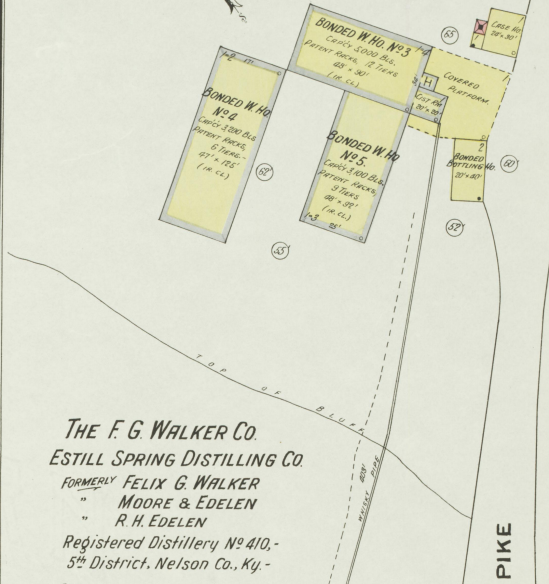
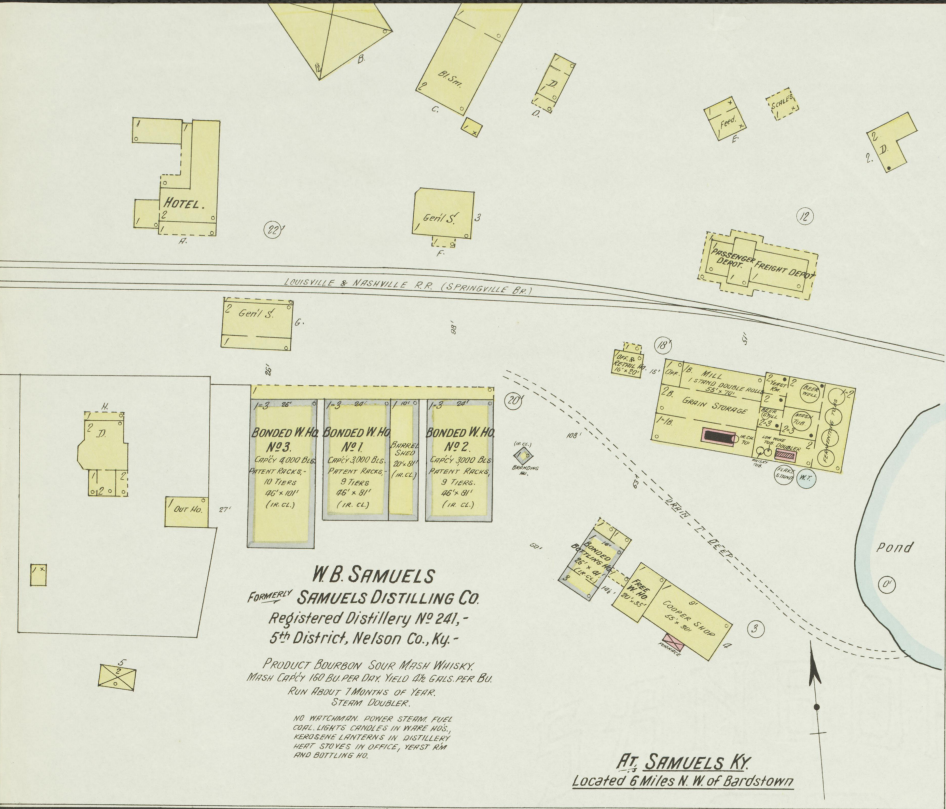
NO WATCHMAN, POWER STEAM, HEAT, SEWES
 IN OFFICE, BOTTLING, NO, AND KITCHEN, NO
 LIGHTS, KEROSENE, LAMPERS, FUEL COAL,
 NO FIRE ARM.

Located 1/2 Mile N.W. of Bloomfield Ky.
 12 Miles N.E. of Bardstown Ky.

At EARLY TIMES KY.
 Located 3 1/2 Miles E. Bardstown Ky.



JAN. 1910
BARDSTOWN
KY.



BARDSTOWN AND BOSTON PIKE