

KEY

RESIDENTIAL: TYPE WALL, PA. OR ROOF
METAL CORNER
TYPE WALL, PA. OR ROOF
TYPE WALL, PA. OR ROOF
FRAME PARTITION
OPENING WITH IRON DOOR
STANDARD
IRON DOOR
WINDOWS & DOOR SHUTTERS
WINDOW 16" STILES
WINDOWS 12" & 16" STILES
25/4 1/2"

STABLE
BUILDINGS COLORED YELLOW ARE FRAME
RED
GREEN
BROWN
BROWN
GREEN
GREEN
STABLES

INDICATE RELATIVE HEIGHTS
FIRE STATION AS SHOWN ON KEY MAP
ALTERNATE STREET NUMBERS ARE ACTUAL
CONSECUTIVE STREET NOS. ARE ARBITRARY



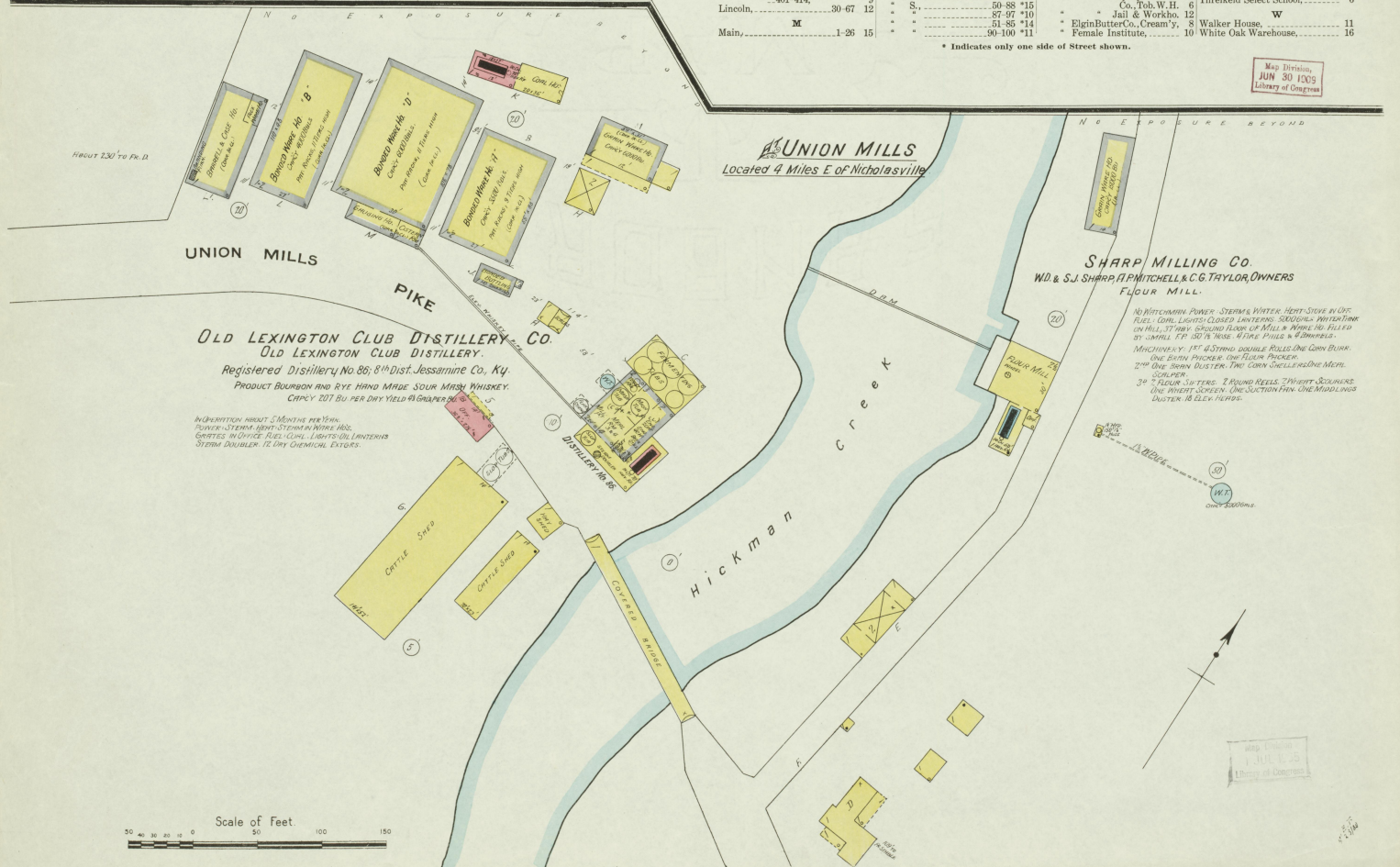
WATER FACILITIES - Nicholasville Water Works, Gravity & direct pumping system. Supply Pump driven by electric motor. Intakes S.W. of Court Hill. Pumped direct through mains to distribution system. Reservoir on Court Hill, 500 ft. elevation. Reservoir on Court Hill, reserved for cases of emergency. Pump equipment. One double double 17" horizontal flow, equipped with capacity 1200 gals. in 24 hrs. Intake 18" & 10" Water Mains. Throughout. Average pressure at Court Hill 45 lbs. per sq. in. Direct pumping, pressure 100 lbs. per sq. in. Average daily consumption in summer 600,000 gal. in winter 300,000 gal. per day.

FIRE DEPT - Machinery, Motor used for actual service. One hose wagon, 1200 hose, 350 ft. in reserve. 2 Extension ladders 5 and 100 ft. 1 Hoop Chemical 1 1/2 ft. Fire alarm Public bells, telephone with gong in each fireman's dwelling. Town nearly level. Public lights electric.



INDEX.

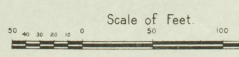
STREETS.	INDEX	INDEX	INDEX
A Street, 14	Main, N., 1-27 1/2	Union Mills Pike, U, 1	Kentucky Barytes Co., Mill., K, 4
Academy, 14	near Brown 14	Washington, W, 1-51 1/3	Distillery & W. H. Co., 16
B Street, 14	Baldwin, near Depot 4	West, N., 1-46 7	Bonded Bott'g Ho., No. 15, 16
Barnes, 14	Broadway, 601-640, arbitrary 6	Wheel, S., 1-80 11	Warehouses, 16
Brown, 201-219, arbitrary 14	Brown, 1501-1514, arbitrary 10	X Street, X, 14	Boone Knoll Distillery, 16
C Street, 14	Centre Ave., 9		L. & A. R. E. Depos., 3
Camp Nelson Pike, 16 & 17	Cottage Ave., 2		Long Warehouse, 7
Duckworth Alley, 4 & 6	Depot, near Duckworth Alley 6	SPECIALS.	Lehighridge Rogers, Henry W. H., 7
Duncan Ave., 301-308, arbitrary 5	Embry Alley, 15	Meth. Episc. Church (Negro), 8	
East, N., 1-52 8	Henry, 15-25, arbitrary 13	Public School, 10	
Elizabeth, 701-726, arbitrary 5	High, 20-36, 3	Presbyterian Church, 12	
Embry Alley, 15	Irvine Ave., 3	Roy Lumber Co., R, 2	
Jefferson, 12	Jefferson, 12	Samaritan Hall, S, 12	
Jessamine Ave., 1-15 26 1/5	Lake Ave., 100-115, arbitrary 3	Schneiders Brick Yard, 13	
	Lincoln, 30-67 12	Sharp Milling Co., Flour Mill, 1	
	Maple Ave., near Elizabeth 9	Shaving Parlors, 6	
	Mulberry, N., 1-44 7	Smith, M. C., Coal & Co., 2 & 3	
	Nicholasville & Versailles Pike: 101-109, arbitrary 14	Standard Lumber Co., 6	
	North Cross, near Main 13	Star Implement Co., 6	
	Richmond Ave., near Main 5	Star Implement Co., Elevator, 2	
	Roy Ave., 701-746, 9	Star Implement Co., Tobacco Curing Barn & Boiler Mill, 4	
	South Cross, 50-69 13	Stall Lumb. Co., Saw & Pl'g Mill, 17	
	Third, N., 1-37 7		
	Union Mills Pike, 400-411, 5		
	Washington, 1-51 1/3 1		
	West, N., 1-46 7		
	Wheel, S., 1-80 11		
	X Street, X, 14		



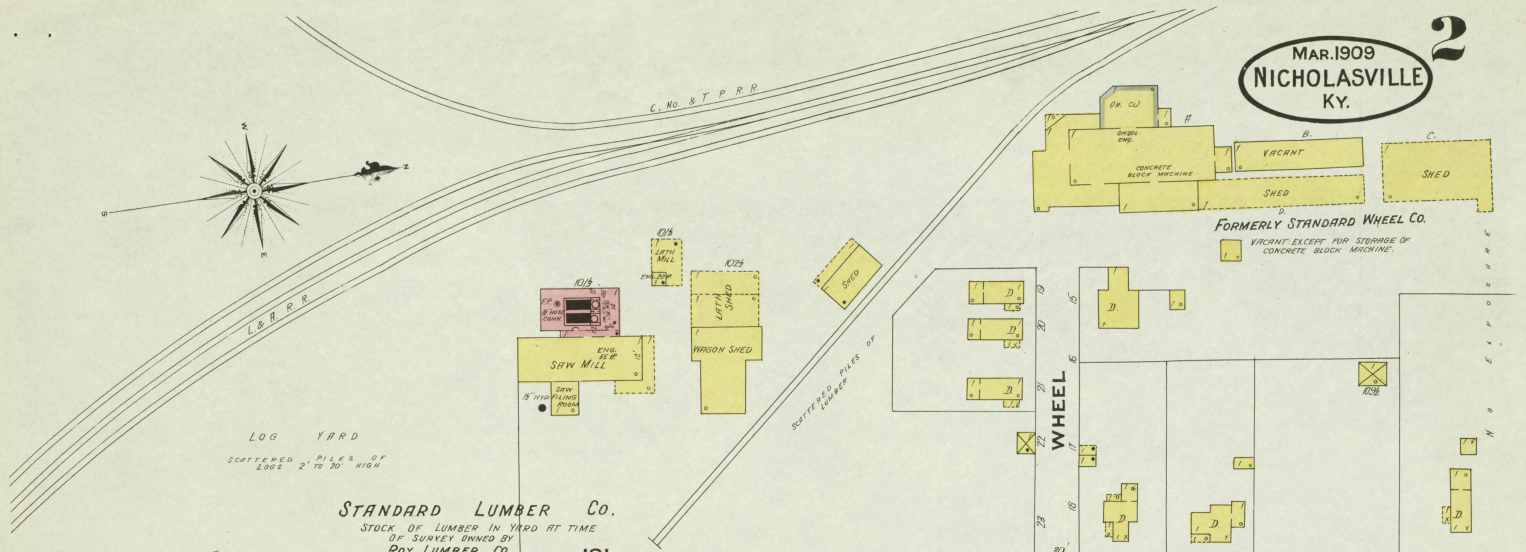
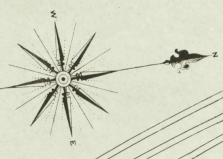
OLD LEXINGTON CLUB DISTILLERY CO.
OLD LEXINGTON CLUB DISTILLERY.
 Registered Distillery No. 86; Dist. Jessamine Co., Ky.
 PRODUCT BOURBON AND RYE HIND MADE SOUR MASH WHISKEY.
 CAPCY 207 BU. PER DRY YIELD 94 GALLONS.

UNION MILLS
 Located 4 Miles E of Nicholasville

SHARP MILLING CO.
 W.D. & S.J. SHARP, P. MITCHELL & C.G. TAYLOR, OWNERS
 FLOUR MILL

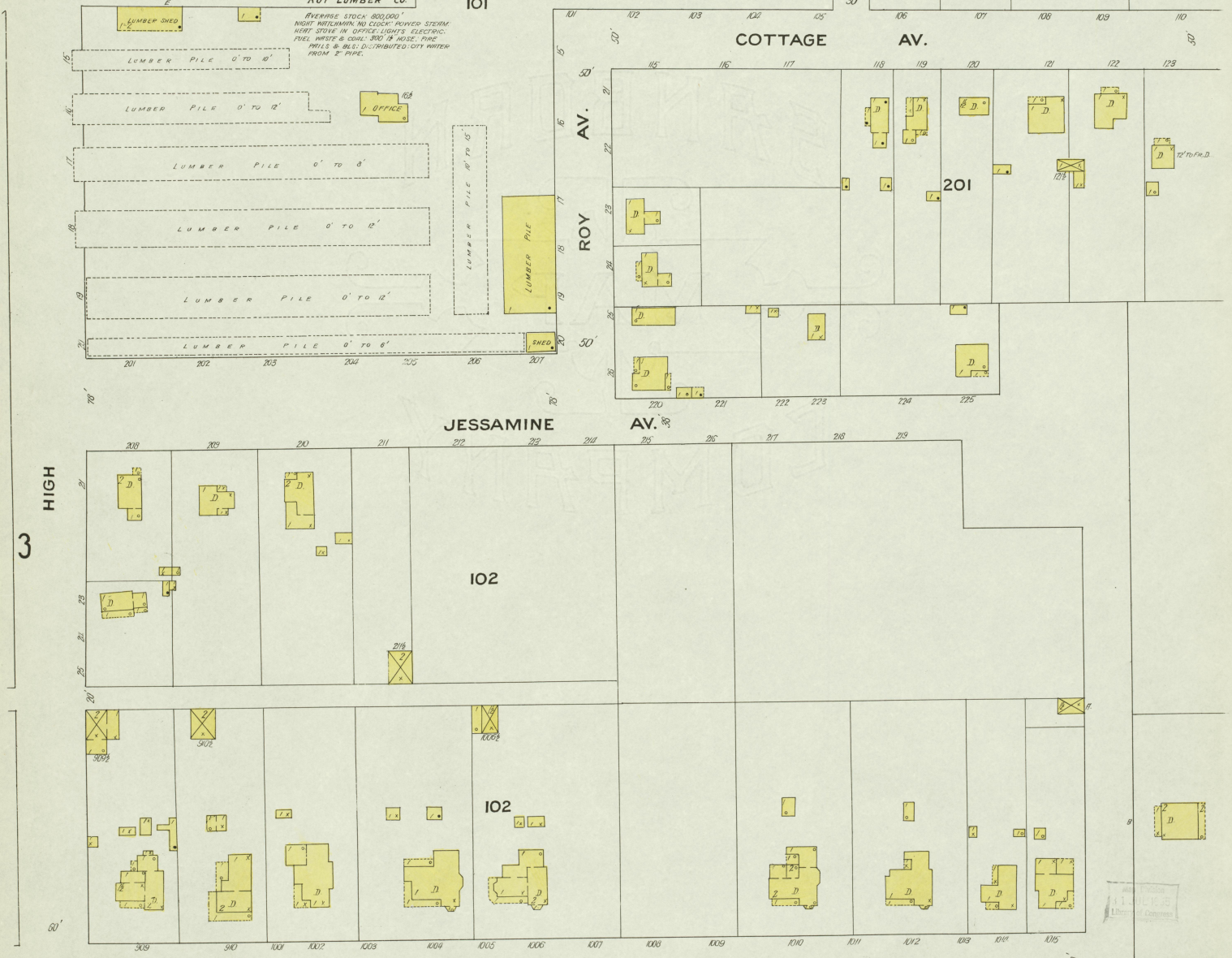


Map Division,
 JUN 30 1909
 Library of Congress



STANDARD LUMBER Co.
STOCK OF LUMBER IN YARD AT TIME
OF SURVEY OWNED BY
ROY LUMBER Co.

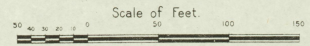
AVERAGE STOCK 800,000'
NIGHT WATERWORK NO CLOCK POWER STEAM
NIGHT STORE IN OFFICE LIGHTS ELECTRIC
FUEL WASTE & COAL 3000 LB HOSE PIPE
PAVING & BELLS DISTRIBUTED CITY WATER
FROM 2" PIPE.



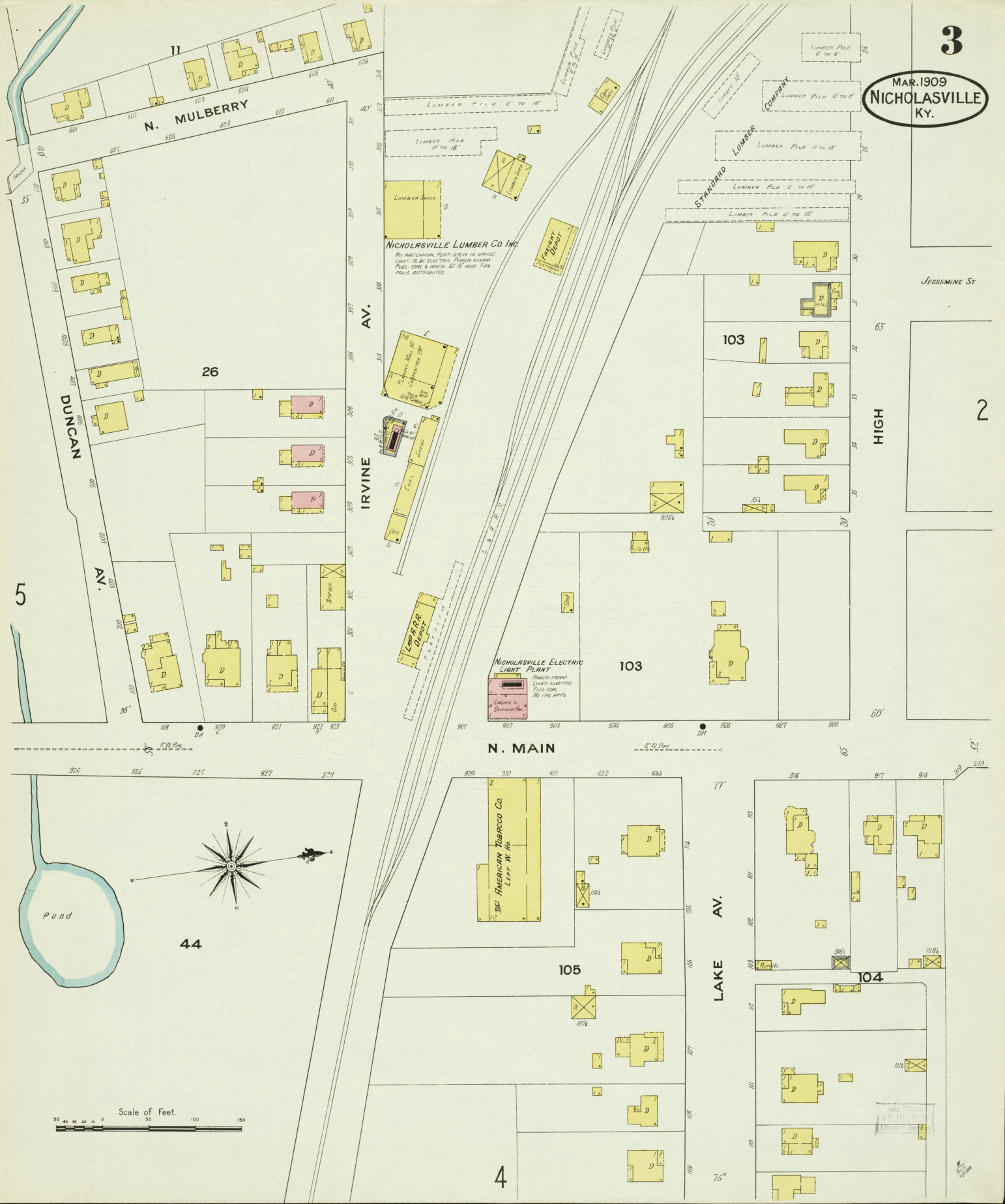
3
HIGH

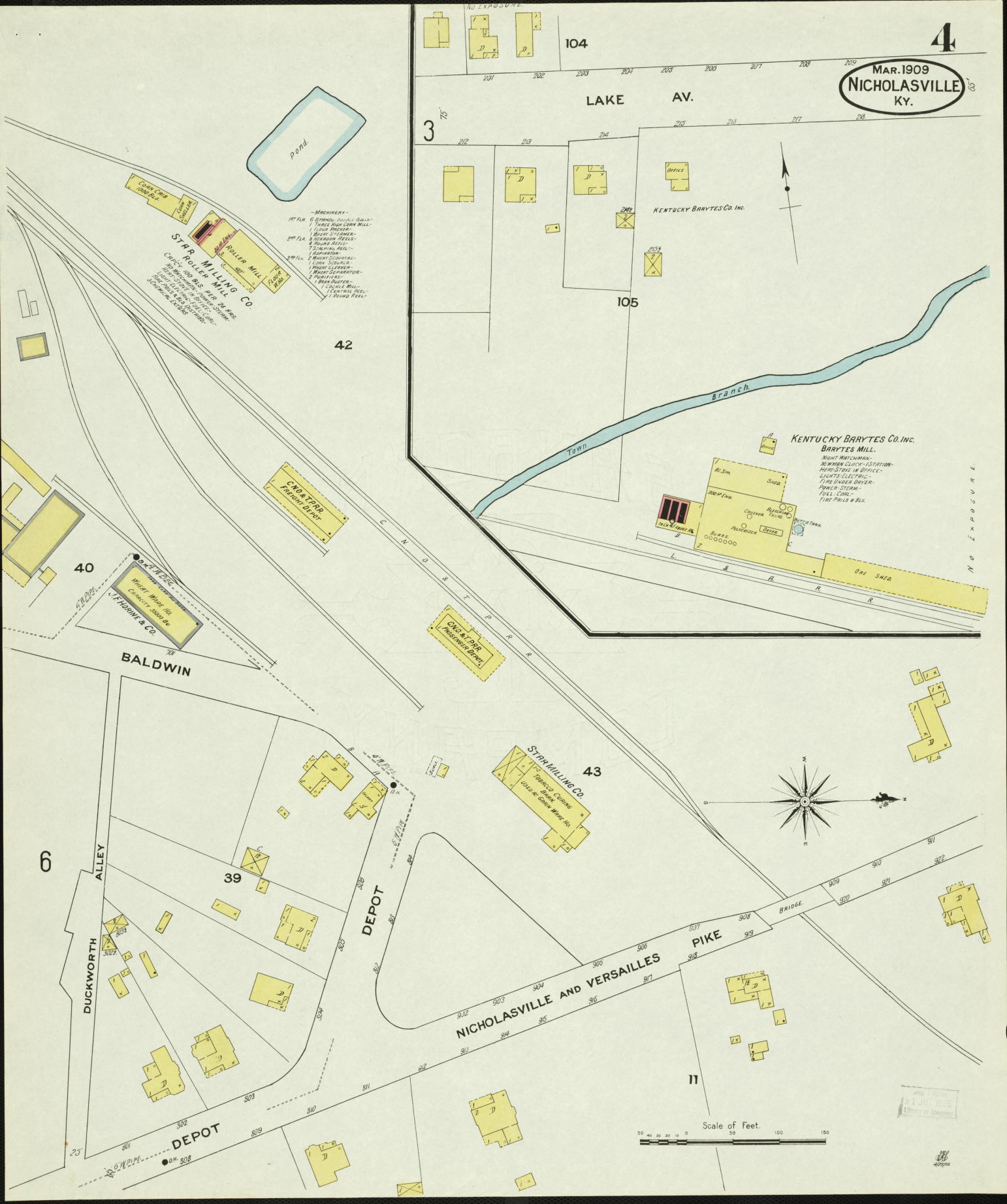
3

N. MAIN



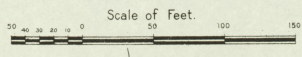
BRICK DWGS. BEYOND





S.P.R. MILLING CO.
 Roller Mill
 1st Flr. 6 STANDS DOUBLE ROLLERS
 2nd Flr. 1000 BAR SCREEN MILL
 3rd Flr. 1000 BAR SCREEN MILL
 4th Flr. 1000 BAR SCREEN MILL
 5th Flr. 1000 BAR SCREEN MILL
 6th Flr. 1000 BAR SCREEN MILL
 7th Flr. 1000 BAR SCREEN MILL
 8th Flr. 1000 BAR SCREEN MILL
 9th Flr. 1000 BAR SCREEN MILL
 10th Flr. 1000 BAR SCREEN MILL
 11th Flr. 1000 BAR SCREEN MILL
 12th Flr. 1000 BAR SCREEN MILL
 13th Flr. 1000 BAR SCREEN MILL
 14th Flr. 1000 BAR SCREEN MILL
 15th Flr. 1000 BAR SCREEN MILL
 16th Flr. 1000 BAR SCREEN MILL
 17th Flr. 1000 BAR SCREEN MILL
 18th Flr. 1000 BAR SCREEN MILL
 19th Flr. 1000 BAR SCREEN MILL
 20th Flr. 1000 BAR SCREEN MILL
 21st Flr. 1000 BAR SCREEN MILL
 22nd Flr. 1000 BAR SCREEN MILL
 23rd Flr. 1000 BAR SCREEN MILL
 24th Flr. 1000 BAR SCREEN MILL
 25th Flr. 1000 BAR SCREEN MILL
 26th Flr. 1000 BAR SCREEN MILL
 27th Flr. 1000 BAR SCREEN MILL
 28th Flr. 1000 BAR SCREEN MILL
 29th Flr. 1000 BAR SCREEN MILL
 30th Flr. 1000 BAR SCREEN MILL
 31st Flr. 1000 BAR SCREEN MILL
 32nd Flr. 1000 BAR SCREEN MILL
 33rd Flr. 1000 BAR SCREEN MILL
 34th Flr. 1000 BAR SCREEN MILL
 35th Flr. 1000 BAR SCREEN MILL
 36th Flr. 1000 BAR SCREEN MILL
 37th Flr. 1000 BAR SCREEN MILL
 38th Flr. 1000 BAR SCREEN MILL
 39th Flr. 1000 BAR SCREEN MILL
 40th Flr. 1000 BAR SCREEN MILL
 41st Flr. 1000 BAR SCREEN MILL
 42nd Flr. 1000 BAR SCREEN MILL
 43rd Flr. 1000 BAR SCREEN MILL
 44th Flr. 1000 BAR SCREEN MILL
 45th Flr. 1000 BAR SCREEN MILL
 46th Flr. 1000 BAR SCREEN MILL
 47th Flr. 1000 BAR SCREEN MILL
 48th Flr. 1000 BAR SCREEN MILL
 49th Flr. 1000 BAR SCREEN MILL
 50th Flr. 1000 BAR SCREEN MILL
 51st Flr. 1000 BAR SCREEN MILL
 52nd Flr. 1000 BAR SCREEN MILL
 53rd Flr. 1000 BAR SCREEN MILL
 54th Flr. 1000 BAR SCREEN MILL
 55th Flr. 1000 BAR SCREEN MILL
 56th Flr. 1000 BAR SCREEN MILL
 57th Flr. 1000 BAR SCREEN MILL
 58th Flr. 1000 BAR SCREEN MILL
 59th Flr. 1000 BAR SCREEN MILL
 60th Flr. 1000 BAR SCREEN MILL
 61st Flr. 1000 BAR SCREEN MILL
 62nd Flr. 1000 BAR SCREEN MILL
 63rd Flr. 1000 BAR SCREEN MILL
 64th Flr. 1000 BAR SCREEN MILL
 65th Flr. 1000 BAR SCREEN MILL
 66th Flr. 1000 BAR SCREEN MILL
 67th Flr. 1000 BAR SCREEN MILL
 68th Flr. 1000 BAR SCREEN MILL
 69th Flr. 1000 BAR SCREEN MILL
 70th Flr. 1000 BAR SCREEN MILL
 71st Flr. 1000 BAR SCREEN MILL
 72nd Flr. 1000 BAR SCREEN MILL
 73rd Flr. 1000 BAR SCREEN MILL
 74th Flr. 1000 BAR SCREEN MILL
 75th Flr. 1000 BAR SCREEN MILL
 76th Flr. 1000 BAR SCREEN MILL
 77th Flr. 1000 BAR SCREEN MILL
 78th Flr. 1000 BAR SCREEN MILL
 79th Flr. 1000 BAR SCREEN MILL
 80th Flr. 1000 BAR SCREEN MILL
 81st Flr. 1000 BAR SCREEN MILL
 82nd Flr. 1000 BAR SCREEN MILL
 83rd Flr. 1000 BAR SCREEN MILL
 84th Flr. 1000 BAR SCREEN MILL
 85th Flr. 1000 BAR SCREEN MILL
 86th Flr. 1000 BAR SCREEN MILL
 87th Flr. 1000 BAR SCREEN MILL
 88th Flr. 1000 BAR SCREEN MILL
 89th Flr. 1000 BAR SCREEN MILL
 90th Flr. 1000 BAR SCREEN MILL
 91st Flr. 1000 BAR SCREEN MILL
 92nd Flr. 1000 BAR SCREEN MILL
 93rd Flr. 1000 BAR SCREEN MILL
 94th Flr. 1000 BAR SCREEN MILL
 95th Flr. 1000 BAR SCREEN MILL
 96th Flr. 1000 BAR SCREEN MILL
 97th Flr. 1000 BAR SCREEN MILL
 98th Flr. 1000 BAR SCREEN MILL
 99th Flr. 1000 BAR SCREEN MILL
 100th Flr. 1000 BAR SCREEN MILL

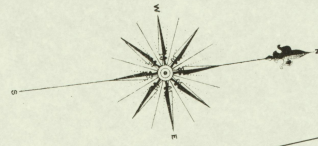
KENTUCKY BARYTES CO. INC.
 BARYTES MILL
 NIGHT WATCHMAN
 NUMBER SLUICE-VALVE
 NIGHT STOVE IN OFFICE
 LIGHTS ELECTRIC
 FINE UNDER COVER
 POWER STEAM
 FULL CORN
 FIRE PAILS & BLS.



W. J. LITTLE
 Library of Congress

MAR. 1909
NICHOLASVILLE
KY.

5



Scale of Feet.
50 40 30 20 10 0 50 100 150

CEMETERY
ESTABLISHED
JULY 1855
Trustees of Congress

6

DEPOT

MAR. 1909

NICHOLASVILLE KY.

D.H.

30'

7

N. THIRD

150'

Academy St

100'

D.H.

F.M.

2000'

4

DUCKWORTH

ALLEY

PHIVITZ

STANDARD OIL CO.

STAR MILLING CO.
GRAIN ELEVATOR

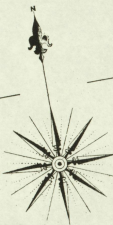
JESSAMINE COUNTY
EQUITY W.H.O. CO. INC.
TOBACCO W.H.O.

40

BALDWIN

BALDWIN

39



10

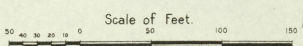
STAR IMPLEMENT CO.

HEMP W.H.O.
(In. C.)

MAIN CROSS

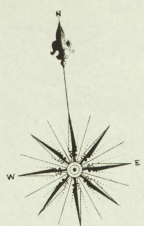
10

ACADEMY ST



Map of Nicholasville, Ky. 1909

MAR. 1909
NICHOLASVILLE
KY.



DEPOT

DEPOT

N. MAIN

N. THIRD

N. MULBERRY

N. WEST

NORTH CROSS

MAIN CROSS

11

5

7

16

12

12

15

17

13

14

18

NICHOLASVILLE ICE & COLD STORAGE CO.
NEET WATCHMAN IN RUNNING ORDER.
NO CASH. HONEY STORED HERE. COOL LIGHTS.
CLEC. WIRE & ROSE RE. ENGLISH SUPPLY FROM
THEY OWN.

LOUGHBRIDGE & ROGERS
HEMP W. HO.

SIMPSON LUMBER CO.

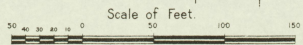
ROLLER SKATING RINK

FIRE DEPT.
2 HORSES

M.E. CHURCH
SOUTH
NEET PIANICE.
LIGHTS ELECTRIC.
10 TO 12 P.M.

PRESBY. CHURCH
NEET PIANICE.
LIGHTS ELECTRIC.
10 TO 12 P.M.

JESSAMINE COUNTY
COURT HOUSE
NEET STEAM LOCOM. ELEC.



C E M E T E R Y
MAR. 1909
NICHOLASVILLE
KY. **8**

5

23

202

RICHMOND AV.

21½

9

ELIZABETH

20

21

NORTH CROSS

HOTEL NICHOLAS

THE CHURCH

22

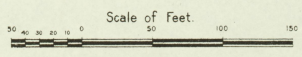
13

MAIN CROSS

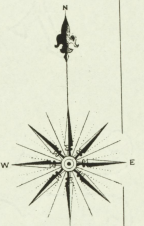
12

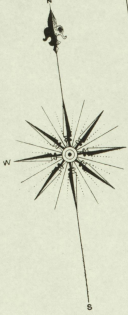
JESSAMINE ELGIN BUTTER CO.
CREMERY

CHRISTIAN CHURCH
(Wesley)



WASHINGTON ST





2 St. Fr. Dns Before

MAR. 1909
NICHOLASVILLE
KY.

RICHMOND AV.

AV. CENTRE

RICHMOND

SCHNEIDERS BRICK YARD
KILN KILN
No. MATCHES - BASE POWDER
LIGHTS ON - FUEL COAL & WOOD
FINE PAIS DISTRIBUTED

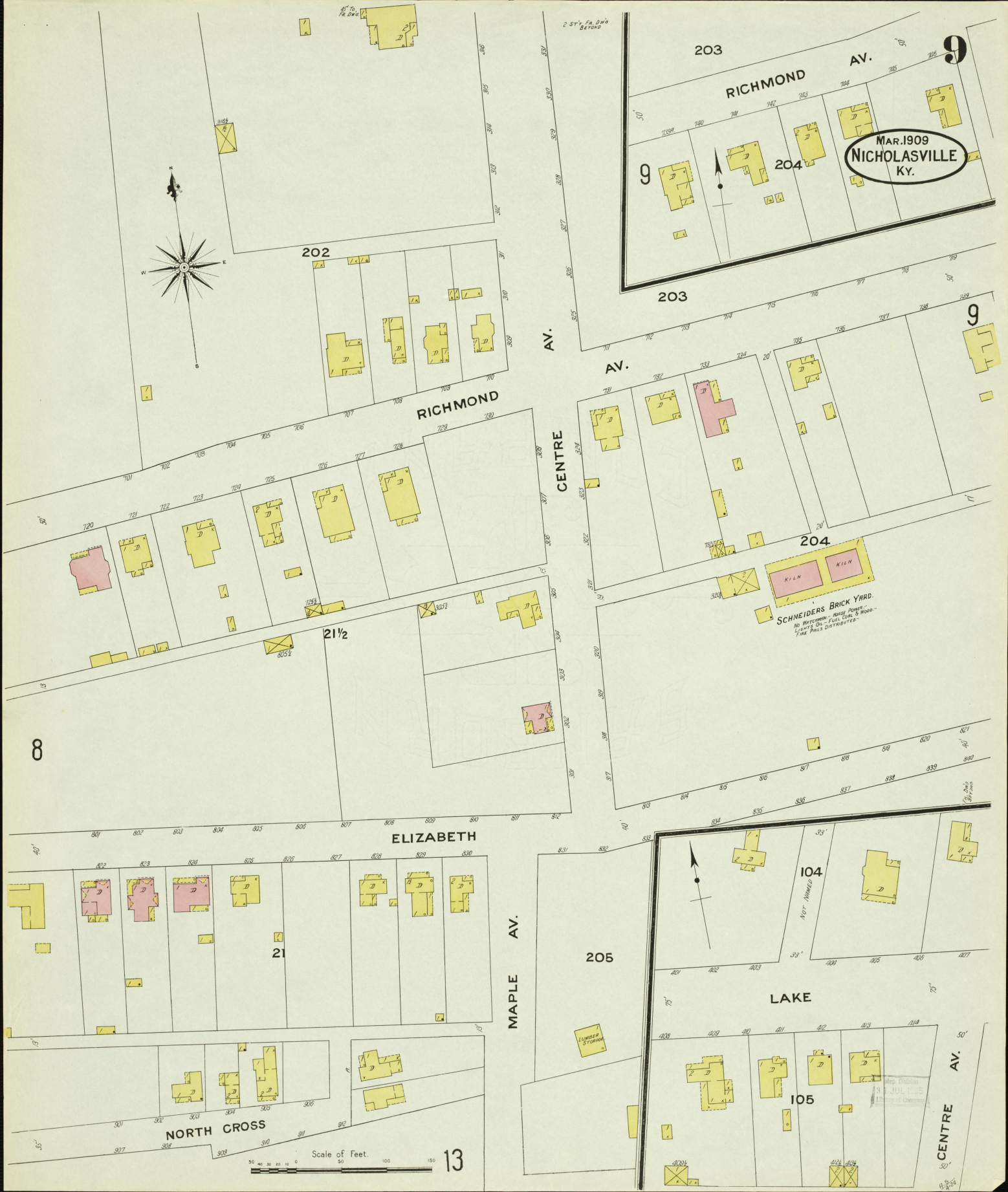
ELIZABETH

MAPLE AV.

LAKE

NORTH CROSS

Scale of Feet
0 50 100 150
13

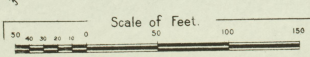




PUBLIC SCHOOL
HEAT STOVES.
NO LIGHTS.

JESSAMINE FEMALE INSTITUTE
HEAT AND W. & S. BATHS;
LIGHTS ELECTRIC;
NO FIRE ALARMS.

Map Printed
31 JUL 1895
Trusty of Insurance



S. THIRD

SOUTH CROSS

MAIN CROSS

BALDWIN

BROADWAY

14

41

38

36

37

40

6

2 IN. DI.
STANDARD

2\"/>

2\"/>

4\"/>

4\"/>

4\"/>

4\"/>

4\"/>

MAR. 1909
NICHOLASVILLE
KY.

11

7

MAIN CROSS

S. MULBERRY

4

5

CHRISTIAN CHURCH
Wheat Flour
Lumber Etc.
Breadstuffs

1ST BAPTIST CHURCH
Wheat Flour
Lumber Etc.
Breadstuffs

SOUTH CROSS

S. THIRD

10

2

S. WEST

S. MAIN

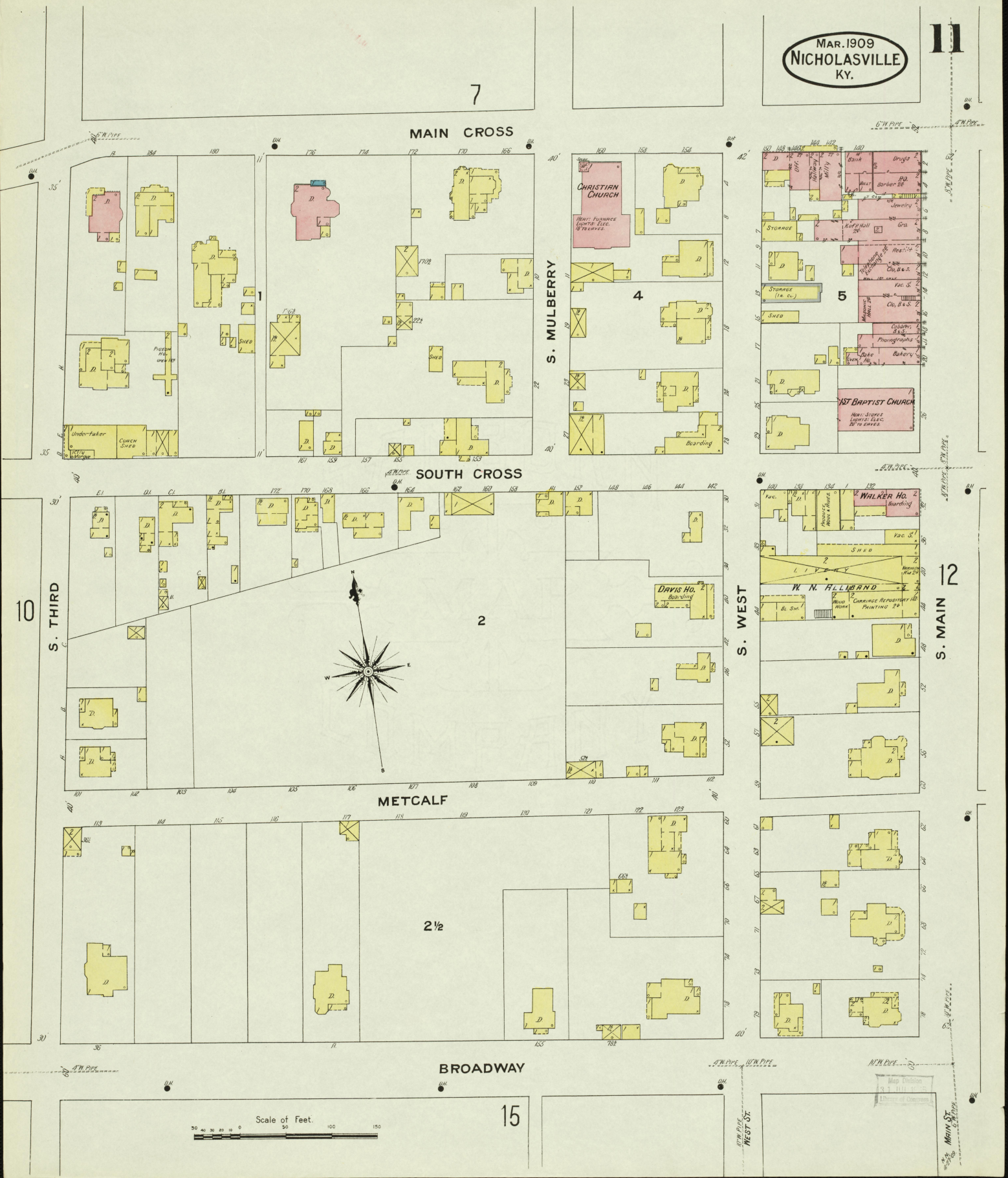
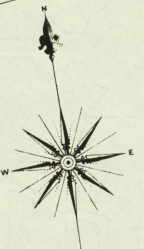
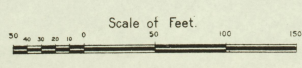
12

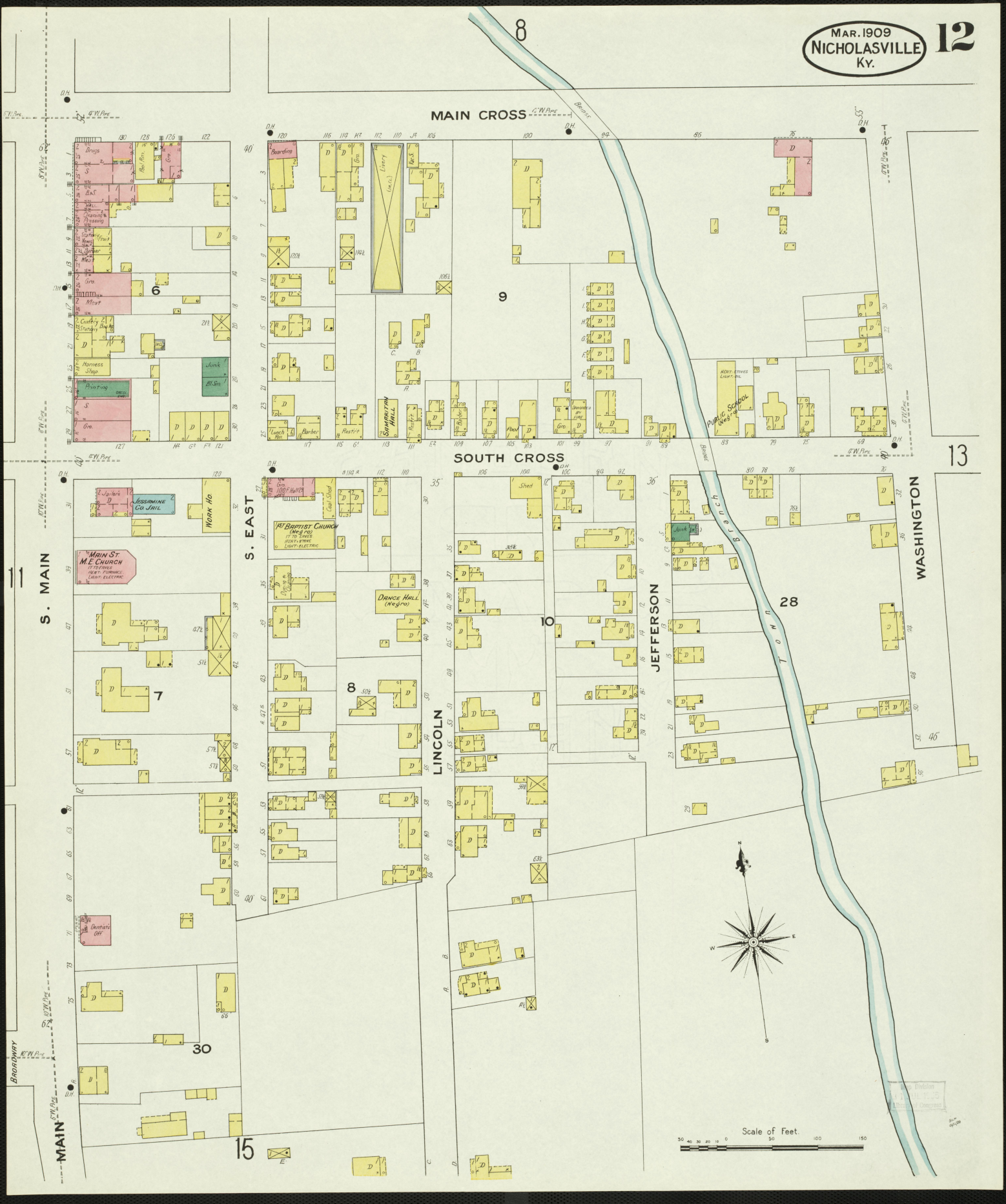
METCALF

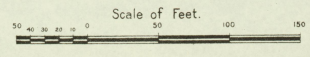
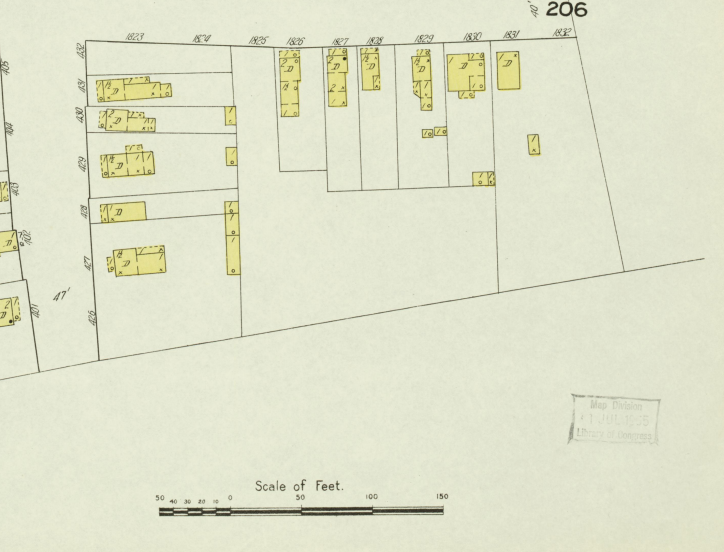
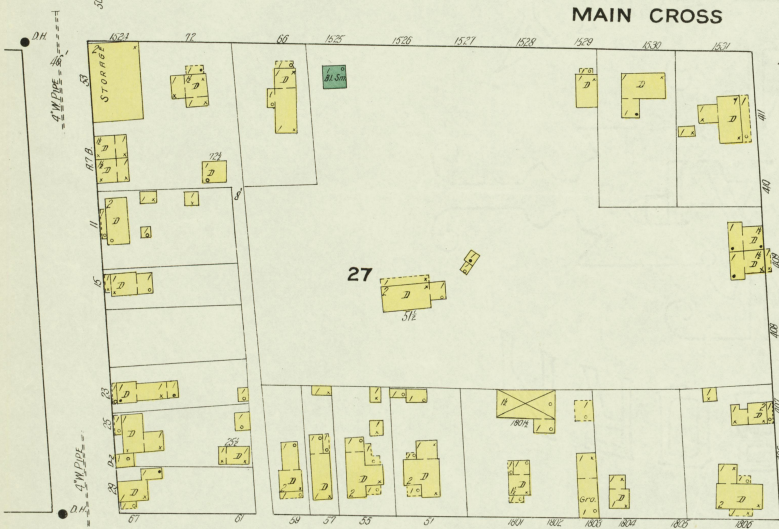
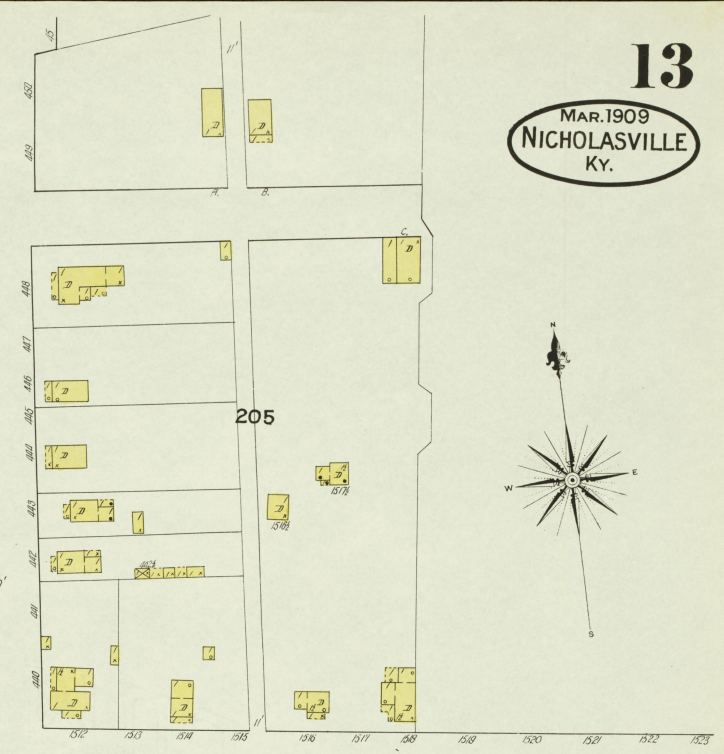
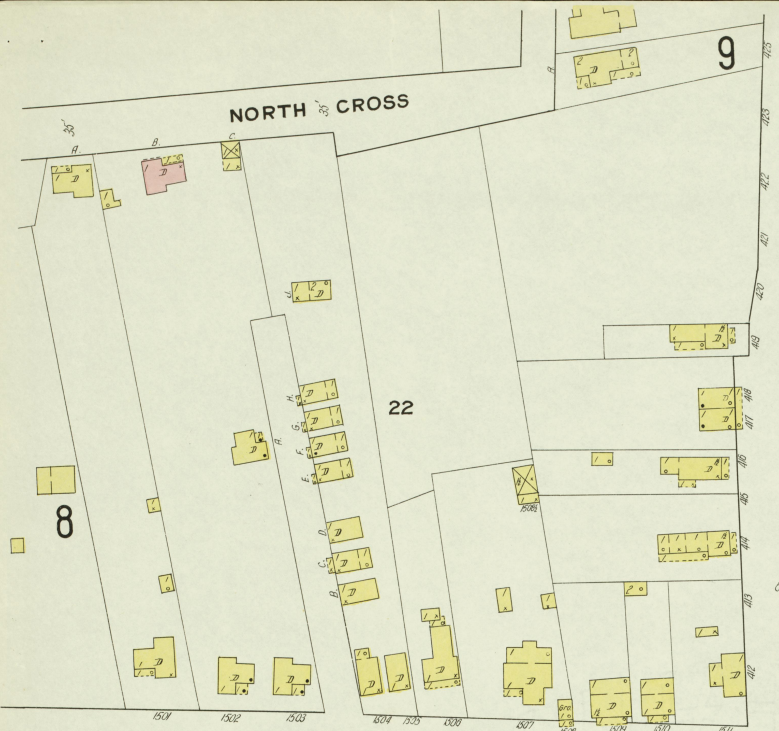
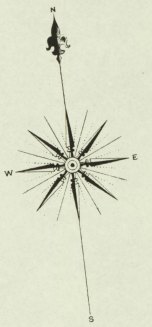
2 1/2

BROADWAY

15



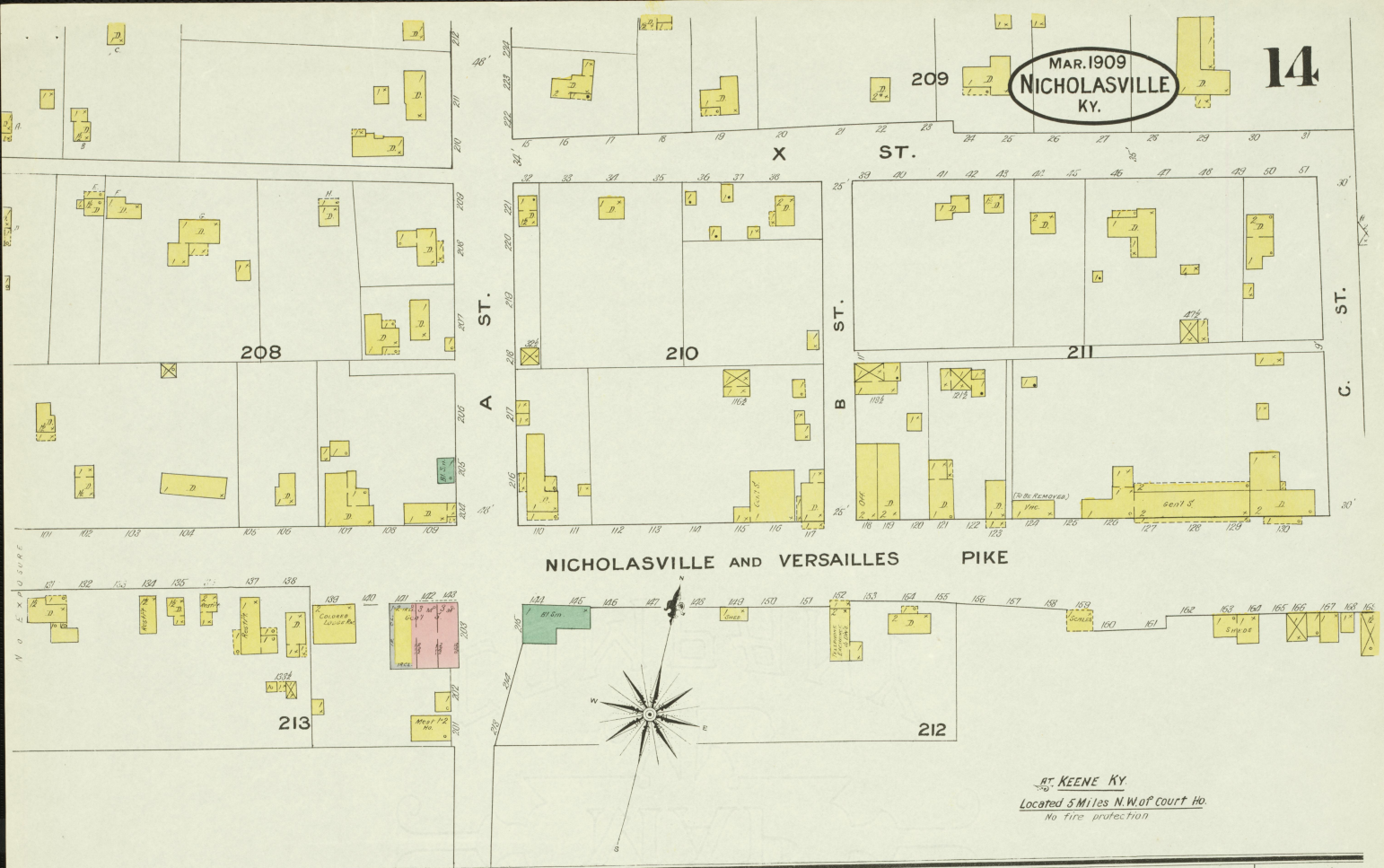




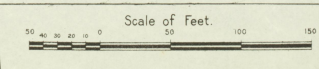
Map Division
PLANNING
BUREAU OF ENGINEERS

MAR. 1909
NICHOLASVILLE
KY.

14



ST. KEENE KY
Located 3 Miles N.W. of Court Ho.
No Fire protection



MAR. 1909
NICHOLASVILLE
KY.

15

14

S. THIRD

ALLEY
EMBRY

26

BROWN

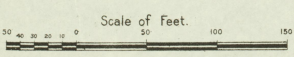
34

32

WEST

S. WEST ST.

MAIN

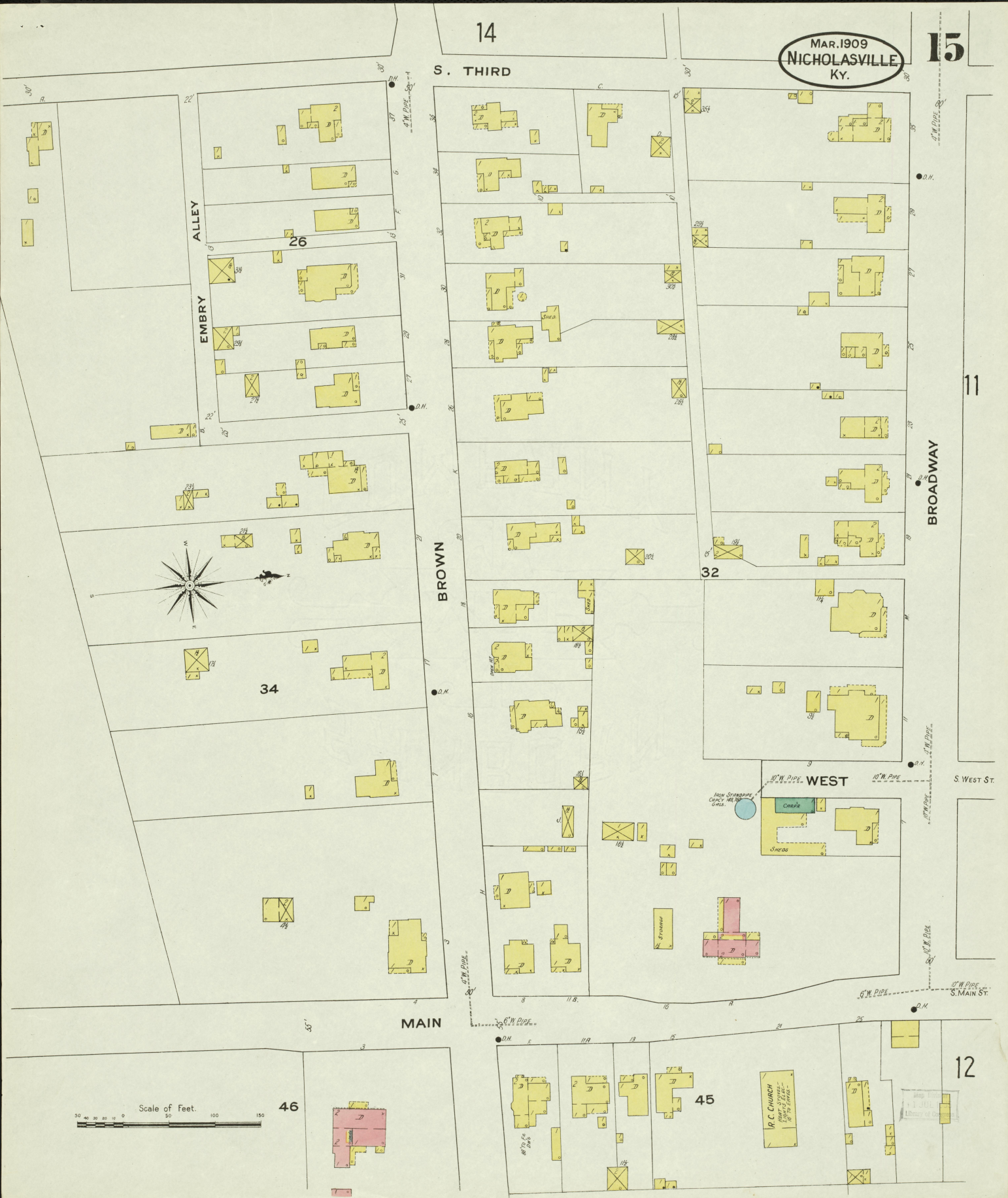
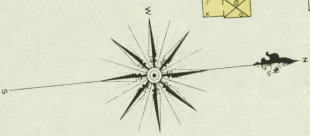


46

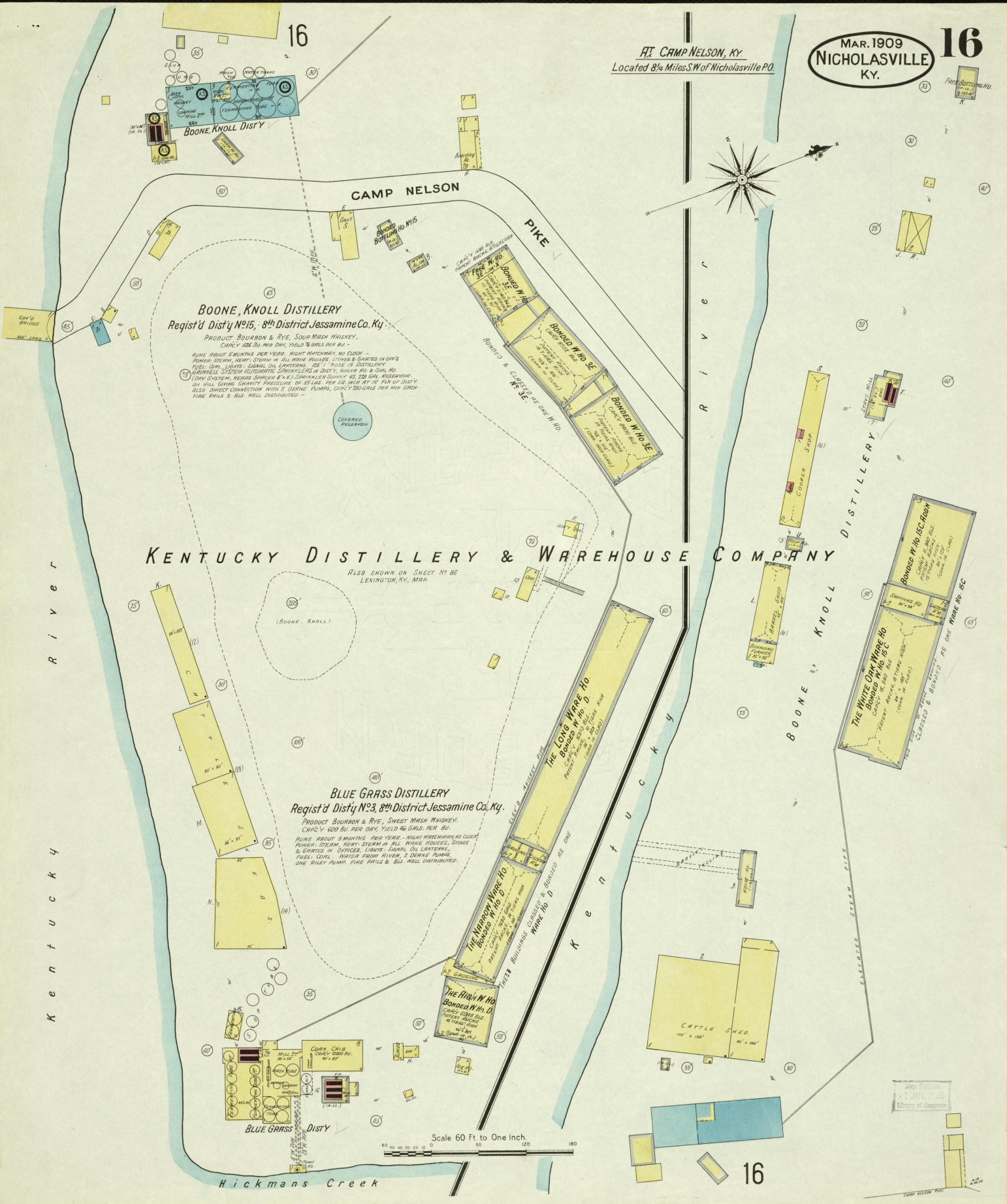
45

J. C. CHURCH
WEST ST. ST. -
100 TO 150
LIBRARY OF

12



AT CAMP NELSON, KY.
 Located 8 1/4 Miles SW of Nicholasville P.O.



KENTUCKY DISTILLERY & WAREHOUSE COMPANY
 ALSO SHOWN ON SHEET NO. 86
 LEXINGTON, KY., MAR.

Boone, Knoll Distillery
 Regist'd Disty No. 15, 8th District Jessamine Co. Ky.

PRODUCT: BOURBON & RYE, SOUR MASH WHISKEY.
 CAPCY: 225 BU. PER DAY, YIELD 78 GALS. PER BU.
 RUNS ABOUT 5 MONTHS PER YEAR. NIGHT WATCHMAN, NO CLOCK.
 POWER: STEAM, HEAT: STEAM IN ALL PRINCIPAL BLDGS., STOVES & COOKERS IN OFF'S.
 FUEL: COAL, LIGHTS: SIGNAL OIL, LANTERNS, 125' T. ROSE IN DISTILLERY.
 SPRINKLER SYSTEM: AUTOMATIC SPRINKLERS IN DISTY, HOUSE HO. & CORN HO.
 (DRY SYSTEM, HEADS SPRINKLED 8" x 8"). SPRINKLER SUPPLY: 42, 120 GAL. RESERVOIR
 ON HILL GIVING GRAVITY PRESSURE OF 35 LBS. PER SQ. INCH 10' FEET OF DISTY.
 BLEND: DIRECT CONNECTION WITH 2 DERRICK PUMPS, CAPCY 200 GALS. PER MIN. EACH.
 FIRE: PAIRS & BLS. WELL DISTRIBUTED.

Blue Grass Distillery
 Regist'd Disty No. 23, 8th District Jessamine Co. Ky.

PRODUCT: BOURBON & RYE, SWEET MASH WHISKEY.
 CAPCY: 600 BU. PER DAY, YIELD 96 GALS. PER BU.
 RUNS ABOUT 5 MONTHS PER YEAR. NIGHT WATCHMAN, NO CLOCK.
 POWER: STEAM, HEAT: STEAM IN ALL PRINCIPAL BLDGS., STOVES & COOKERS IN OFFICES, LIGHTS: SIGNAL OIL, LANTERNS.
 FUEL: COAL, WATER FROM RIVER, 2 DERRICK PUMPS.
 ONE RILEY PUMP, FIRE PAIRS & BLS. WELL DISTRIBUTED.

The Wapping Ho. (Bonded W.H. No. 10)
 CAPCY: 1000 BU. PER DAY, YIELD 120 GALS. PER BU.
 RUNS ABOUT 5 MONTHS PER YEAR. NIGHT WATCHMAN, NO CLOCK.
 POWER: STEAM, HEAT: STEAM IN ALL PRINCIPAL BLDGS., STOVES & COOKERS IN OFFICES, LIGHTS: SIGNAL OIL, LANTERNS.
 FUEL: COAL, WATER FROM RIVER, 2 DERRICK PUMPS.
 ONE RILEY PUMP, FIRE PAIRS & BLS. WELL DISTRIBUTED.

The Wapping Ho. (Bonded W.H. No. 10)
 CAPCY: 1000 BU. PER DAY, YIELD 120 GALS. PER BU.
 RUNS ABOUT 5 MONTHS PER YEAR. NIGHT WATCHMAN, NO CLOCK.
 POWER: STEAM, HEAT: STEAM IN ALL PRINCIPAL BLDGS., STOVES & COOKERS IN OFFICES, LIGHTS: SIGNAL OIL, LANTERNS.
 FUEL: COAL, WATER FROM RIVER, 2 DERRICK PUMPS.
 ONE RILEY PUMP, FIRE PAIRS & BLS. WELL DISTRIBUTED.

Blue Grass Disty

Scale 60 Ft. to One Inch

Map of Camp Nelson, Ky.
 T. JUL. P. 23
 Library of Congress

Kentucky River

MAR. 1909
NICHOLASVILLE
KY.

17

J. W. GLASS & SON
FEED, SEED, CORN AND AGRICL. IMPLTS

WHEAT WARE HO.
CAPCY. 25,000 BU.

CORN & HAY SHED

THE STULL LUMBER CO. INC.
SAW & PLANING MILL

NIGHT WATCHMAN NO. CLOCK
POWER SYSTEM, HEAT SYSTEM
WATER SUPPLY SYSTEMS
FUEL, WASTE, FIRE PILES & BARNYARD

CAMP NELSON PIKE

PLANING MILL

SAW MILL

AT CAMP NELSON KY.

Located 8 1/2 Miles S.W. of Nicholasville Court Ho.

THE J. D. HUGHES LUMBER CO. INC.
SAW & PLANING MILL

AVERAGE STOCK IN YARD THREE MILLION FT.

NIGHT WATCHMAN, NEARBY CLOCK DISTRIBUTION
POWER SYSTEM, HEAT SYSTEM IN OFFICE & LUMBER
ON LUMBER, FUEL, WASTE, HYDRANTS & HOSE
IN YARD ARE FED BY 100,000 GALLON WATER
TANK, ELEVATED 85' AND 100,000 GALLON WATER
TANK, ELEVATED 15' AND TRUCKS W/ COPPER
PUMP LOCATED AT RIVER, FINE POND AND S.W.
WELL DISTRIBUTED THROUGHOUT MILL AND YARD.

WATER TOWER
ELEVATED 100' TO 120' TO GIVE WATER PRESSURE

WATER TOWER
ELEVATED 100' TO 120' TO GIVE WATER PRESSURE

WATER TOWER
ELEVATED 100' TO 120' TO GIVE WATER PRESSURE

WATER TOWER
ELEVATED 100' TO 120' TO GIVE WATER PRESSURE

WATER TOWER
ELEVATED 100' TO 120' TO GIVE WATER PRESSURE

WATER TOWER
ELEVATED 100' TO 120' TO GIVE WATER PRESSURE

WATER TOWER
ELEVATED 100' TO 120' TO GIVE WATER PRESSURE

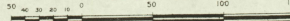
WATER TOWER
ELEVATED 100' TO 120' TO GIVE WATER PRESSURE

WATER TOWER
ELEVATED 100' TO 120' TO GIVE WATER PRESSURE

AT HIGH BRIDGE KY.

Located 9 Miles E. of Nicholasville Court Ho.

Scale of Feet.



Map of
JUL 15 1909
Library of Congress