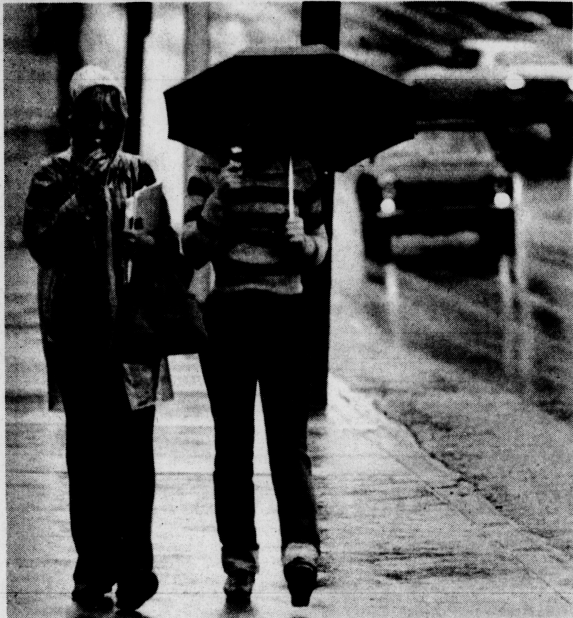


# KENTUCKY Kernel

Vol. LXXI, No. 48  
Monday, October 24, 1978

University of Kentucky  
Lexington, Kentucky



By DAVID O'NEIL/Kernel Staff

## Enjoying a dip

Cindy Meyers (with umbrella) a freshman pharmacy student and Jamie Salizburg, a freshman in medicine, stayed dry during yesterday's late afternoon showers

while at the same time, enjoying a dip of ice cream, that is, Meyers accompanied Salizburg for an ice cream before her German quiz.

## Fast food restaurants may be answer to SC Grill problems

By SUSAN SULLIVAN  
Staff Writer

Fast food restaurants have become a part of American tradition in a society that is constantly on the go. This trend in dining blooms in the noon rush on the UK campus.

According to Allen Riemann, director of UK food services, the three Student Center restaurants daily serve more people during the noon hour than any commercial restaurant in Lexington. "The maximum number of people that can get in the Student Center grill are being served when classes let out at noon," he said.

Approximately 1,000 students eat in the Wildcat Grill each day. "The facility is not equipped to handle the mass rush efficiently," he said. "As a result, people eating at that time are generally displeased with the service."

Plans are under way to improve the service in the Student Center. While change is still in the talking stage, Riemann said McDonald's and Hardee's are being considered to replace the Equinox. It would cost UK less to have a commercial chain take over than it would for Food Services to revamp its operations, he said.

Riemann will inspect the Ohio State University Union's food service program. Within the OSU Student Union building, a McDonald's, a pizzeria and a sweet shop are built around one dining room. The program has been reasonably successful for the past six years, Riemann said. "When their food services went out of business, food chains were the cheapest way out."

Another reason for locating a commercial food outlet in the Student Center is that it would tend to draw more people during the off hours. According to Riemann, McDonald's and Hardee's "probably" would not be more expensive since it would follow the franchise guidelines.

Replacing a University operated dining hall with a franchise management presents a problem with student meal cards. "Of the total

number of students on board contract, 22 to 24 percent of them use meal cards for grill-type food each day," Riemann said. Meal tickets would not be honored at the chain restaurant.

All students living in residence halls must sign a room contract and have the option of buying a meal ticket. They may choose one of the four meal plans each semester. The plans available for the fall 1978 semester were: \$428 for three meals a day, seven days a week; \$370 for two meals a day, seven days a week; \$351 for three meals a day, five days a week; and \$301 for two meals a day, five days a week.

Meal tickets are convenient for students. They do not have to worry about having cash in order to eat. Once the ticket is purchased at the beginning of the semester, the student is assured of a certain number of meals each day, even when his finances are low.

Not only would meal cards be worthless at the proposed McDonald's, but the cash value would be about 26 percent higher than the Equinox. (See accompanying chart for comparisons.)

Riemann explained that there are also differences in the meat entrees.

The hamburger served at the Equinox is two and two-thirds ounces raw meat before it is broiled. McDonald's hamburger is one and four-fifths ounces. The McDonald's quarter pounder is hamburger while the campus grill's version is 4 ounces of ground chuck.

Since a McDonald's on campus would operate consistently with the chain, it would offer a more limited menu. Other than in fruit pies, fruit and salads would not be available. The homemade brownies and cookies, which are popular at the grill, would also be missing, Riemann said.

The Student Center grill is open between 10:30 a.m. and 8 p.m. Monday through Friday. The hours of operation of any replacement have not yet been determined, he said, but would likely remain as they are.

While Food Services follows government standards on recommended daily allowances, it cannot guarantee that students select proper meals, Riemann said. "I doubt if a fast food eating place on campus would have any influence on the dietary habits of students."

Continued on page 3

## Senate subcommittee told

# Anti-smoking bill will bring problems to state's industry

By LINDA CAMPBELL  
Staff Writer

As Sen. Wendell Ford (Dem.-Ky.) listened to pro-tobacco voices in Senate subcommittee hearings yesterday on UK's campus, he heard reasons why anti-smoking may be unhealthful to Kentucky's economy, in terms of jobs and revenue generated by Kentucky's leading cash crop.

In trying to protect Kentucky's economy and the tobacco industry, Ford is spending two days gathering arguments to use against anti-smoking legislation introduced into the 95th Congress by Senator Edward Kennedy. Although the bill, S. 3118, died in committee, Ford said he is certain similar legislation will reappear when the 96th Congress convenes Jan. 15.

Ford is the chairman of the Senate subcommittee of the Senate Committee on Commerce, Science and Transportation. The hearing yesterday in Seay Auditorium, and a second one today in Bowling Green, is giving the tobacco industry a chance to prove the importance of tobacco to Kentucky's economy. Ford will use these facts to combat anti-smoking legislation pushed by Kennedy and Joseph Califano, President Carter's secretary of health, education and welfare.

Bill S. 3118 deals with various aspects of the effect of cigarettes on health, especially the health of adolescents, according to a spokeswoman for the Senate subcommittee of Health and Scientific Research. In connection with this bill, Kennedy has conducted hearings in Washington dealing with the hazards of smoking to a person's health.

Ford feels the tobacco industry must review the economic impact passage of such a bill could have on Kentucky's economy.

Kennedy's hearings in Washington concentrate on the illnesses related to smoking, such as cancer and heart disease. While Ford's staff concedes these are problems, they also point out that tobacco industries support research in areas of tobacco and health.

"I suddenly the tobacco market is taken away," said Ford's spokesman. "Kentucky will sink. Kentucky's economy is much dependent on tobacco."

Representatives from farm organizations, agri-business firms, banks, the Kentucky Chamber of Commerce, producers and economists were among those who presented support of the tobacco industry in Kentucky at yesterday's hearing in Lexington.

Two components of the bill which are being disputed are a proposed tax on cigarettes, based on their tar and nicotine content, and the authorization through passage of such a bill to segregate smokers and non-smokers in any federal facility.

"When I hear talk of reducing or curtailing our tobacco farmer's opportunities," said Kentucky Commissioner of Agriculture Thomas O. Harris, "my immediate response is to say this is catastrophic action, not

only toward the tobacco farmer, but to every segment of Kentucky's \$1.9 billion agricultural income."

Harris proceeded to point out that tobacco is the leading cash crop in Kentucky. With a five-time turnover for each agriculture dollar, proceeds from the tobacco industry, at the farm level, generate more than \$4 billion to boost Kentucky's economy. Economists estimate, Harris said, that tobacco farming provides the equivalent of 39,000 full-time jobs and some \$150 million in wages and salaries for Kentuckians.

Speakers at the hearings emphasized other jobs connected indirectly with the tobacco industry. These include jobs for people involved in marketing tobacco (approximately 8,000 people in seasonal work) cigarette manufacturers and related jobs in that industry, and revenues collected from the sale of cigarettes, which are reinvested into the economy.

In testimony from William Short, secretary of the development cabinet, the economic impact of the proposed tax was discussed.

Section seven of the Senate bill would amend the Internal Revenue code by adding a graduated tax on cigarettes, related to the toxic units (defined by milligrams of tar and nicotine). The tax would result in five different price categories for cigarettes, from five cents to fifty cents per pack, or fifty cents to \$5 per carton in additional taxes, creating problems for retail and vending machine sales.

Through economic reasoning, Short concludes, because of the characteristics of cigarettes, smokers will substitute more low tar and nicotine cigarettes, at the lower price, for the higher priced, more toxic brands. By smoking more of the low tar brands, the net effect of toxic units would be zero, counteracting any of the measures to protect health which Kennedy hopes to achieve through the sliding tax.

Short explained that if the tax is instituted, "it logically follows that manufacturers would substitute low toxic tobacco for high. Farmers would shift production to these varieties, and under the present state-of-the-art

(production methods) they would achieve lower yields per acre with the same amount of cost. The question that has to be asked is how quick can producers shift over to these varieties and at what cost?"

Short concluded that the tax would cause tobacco producers to quit, taking revenue away from the entire Kentucky segment. Also land values would decrease as tobacco bases and quotas are taken away.

Short also presented the idea of bootlegging cigarettes. If U.S. cigarettes are highly taxed, smuggling might occur from countries like Mexico and Canada, providing the consumer with lower priced, illegally imported, cigarettes.

Milton Shufflett, professor of agriculture economics at UK, outlined a possible situation that could occur if a bill similar to S. 3118 were to be passed. If the cigarette tax increased by an average of twenty-five cents per pack, the effect would be to reduce consumption by 30 percent.

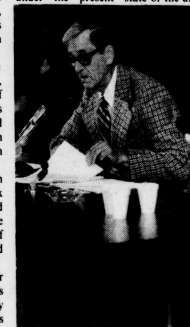
The provisions of S. 3118 designed to prohibit smoking in open areas of Federal facilities, to segregate smokers and non-smokers, and to change labeling requirements, would also reduce consumption.

Shufflett estimated that the tobacco requirements by one-third and have a severe impact on Kentucky's economy.

"Burley production would be reduced by 140 million pounds with 175 million dollars less in cash farm income," Shufflett said. "Farmland values would decline about \$400 million and employment of the equivalent of 13,000 jobs by family members and hired labor would be lost."

The speakers said passage of this type of bill would affect more than 9,000 people employed in cigarette manufacturing and an additional 6,000 people working in the processing of tobacco. Also, a rippling effect, as Ford said, would continue through all industries in any way related to cigarette manufacturing.

## Tickets abundant for Georgia game Saturday night



MILTON SHUFFLETT

There are approximately 3,000 student tickets remaining for the UK-Georgia football game to be played this Saturday in Commonwealth Stadium.

Associate Dean of Students T. Lynn Williamson said last night that students with a validated UK ID and Activity Card may pick up tickets from 9 a.m. to 4 p.m. today at Memorial Coliseum.

At noon, all remaining student tickets will be available for purchase as guest tickets. Williamson said students may purchase two guest tickets each. Seats in the stadium will be available at \$10 each, while end zone seats will cost \$6.

## today

### state

**HUNDREDS OF KENTUCKIANS** who purchased Firestone steel-belted radial tires will be able to replace them free of charge as a result of a recall decision by the company, state consumer protection officials said yesterday.

Firestone Tire & Rubber Co. said it would soon begin mailing recall notices covering about 10 million of its "500" radial tires. The recall decision was relayed to the U.S. Transportation Department Friday, capping a long effort by the department's National Highway Traffic Safety Administration.

### nation

**PRESIDENT CARTER TAKES HIS NEW ANTI-INFLATION** program to the American public tonight and already business, labor and consumer groups are telling him it will not work.

The program, to be unveiled in a nationwide broadcast at 10 p.m. EDT, includes voluntary limits on wages and prices. They

would be enforced by some new government weapons, administration sources say.

Carter's program would set a seven percent limit on wages and fringe benefits. The price formula is more complicated but is aimed at holding increases to 5 1/2 percent a year.

The government plans to use sanctions to enforce the guidelines, such as possibly withholding federal contracts to firms which do not comply with them, and allowing more imports, sources said.

### world

**POLICE OPENED FIRE ON STUDENTS** and teachers demonstrating against the government Sunday in the city of Hamadan, Iran, killing at least five persons and wounding 18, press reports said.

The reports said the bloodshed occurred when protesters ignored warnings to disperse and began setting fires to banks and government buildings. Hamadan is 250 miles west of Tehran. In Hamadan, 200 miles south of the capital, thousands of high-school and university students staged a protest march Saturday, it was reported. The students demanded an end to martial law, release of political prisoners and repeal of the government's ban on gathering of more than three persons, the reports said.

**EGYPT ASKED FOR "MODIFICATIONS"** yesterday in the proposed peace treaty with Israel, apparently dissatisfied with the weak link the draft document makes between the Palestinian issue and an Egyptian-Israeli settlement.

In Jerusalem, meanwhile, Prime Minister Menachem Begin convened the Israeli Cabinet to consider the treaty proposals in what was expected to be a long and fiery secret session lasting well into the night.

Foreign Minister Moshe Dayan and the other Israeli negotiators at the Washington Peace talks with Egypt had resisted putting "linkage" language in the proposed treaty—wording that would make the Israeli-Egyptian peace in some way dependent on progress toward settling the issues of the Israeli-occupied West Bank and Gaza Strip and the political future of the Palestinians living there.

### weather

**MOSTLY SUNNY AND MILD** today with high in the low to mid 60s. Clear and cool tonight. Lows in the low 40s. Sunny and warmer tomorrow with highs in the upper 60s.

# KENTUCKY Kernel

editorials & comments

Tom Clark  
Jeanne Welnes  
Associate Editors

Gregg Fields  
Sports Editor

David O'Neil  
Director of Photography

Steve Ballinger  
Editor in Chief

Jamie Vaughn  
Associate Sports Editor

Tom Moran  
Photo Manager

Richard McDonald  
News Editor

Walter Tunis  
Arts Editor

Nell Fields  
Images Editor

Mary Ann Buchart  
Debbie McDaniel  
Betsy Pearce  
F. Jenay Tate  
Copy Editors

Cary Willis  
Assistant Arts Editor

## 'Sharpen Carrie's axe'

It looks as though Carrie Nation's axe needs to be taken out of mothballs and sharpened to a fine edge. There's work to be done, and soon, because Demon Rum is on the loose again.

That seems to be the attitude of the Kentucky Nurses' Association, which last week followed the lead of its Virginia counterpart in opposing a new soft drink containing alcohol.

Anheuser-Busch, the nation's largest brewer, recently began test-marketing the drink, Chelsea, in Richmond, Va., and in five other areas. "The new not-so-soft drink," as Chelsea advertising proclaims, combines ginger, lemon and apple flavoring with a malt base and contains less than 0.5 percent alcohol.

Because the alcoholic content is so low, it can be sold to children and is outside the jurisdiction of many state alcohol control boards, including Kentucky's.

The nurses groups admit that a kid would have to have a super-sized stomach to even get slightly inebriated from such a weak potion. What they're concerned about is that the new beverage may be an attempt to condition young people to drink alcohol.

But there are already many more powerful inducements to drink liquor that children are exposed to every day. Hard, frequent drinking is extolled in the movies, laughed at on television and in the funny pages, and is touted by professional athletes in advertisements. Chelsea, on the other hand, is being marketed toward young adults (not children) as a "premium" soft drink.

Not only are children more than familiar with booze, it's already available to them, along with many varieties of drugs and consciousness-altering chemicals. A sad state of affairs, but true. Mouthwash and cold medicine contains 25 times as much alcohol as Chelsea.

Besides, "near-bears" like Chelsea are familiar in this country and have some good points. They're a milder alternative to beer for people who are convalescing or can't handle harder drinks, for one thing. Also, Chelsea contains no caffeine or tooth-decaying sugar, like most soft drinks.

So let's stop trying to find scapegoats for alcohol abuse. Nurses' associations and other groups have nothing worth becoming excited over from the new drink. Let Carrie Nation rest in peace.



## 'What if Karol Wojtyla and not Jerzy Kosinski'

Suppose Karol Wojtyla and not Jerzy Kosinski had been expected at Sharon Tate's home in Los Angeles that day in 1969 when Charles Manson's butchers murdered Tate, Abigail Folger and Voytek Frykowski. Suppose Karol Wojtyla, not Jerzy Kosinski, had been saved from the massacre when the mishandling of his luggage delayed his departure for California. Suppose that Karol Wojtyla had been telephoned the next day by the Los Angeles Police Department and informed that his friend the handsome athlete, Voytek Frykowski, had died after being stabbed 51 times.

Could Karol Wojtyla, once again intimately reminded of the murderousness of the unredeemed, then appear before us as the smilingly genial Pope John Paul II? Or would he in some way resemble the novelist-goblin Jerzy Kosinski (*Being There*, *Cockpit*, *Blind Date*), the Polish exile turned "portable man" who keeps weapons and a survival kit in the trunk of his car, a writer who has made it his mission to convince his reader that "he is mortal, he is vulnerable, he is not protected — yet he survives..."

In other words, what will we never know about the actual living experience of this pope who at close quarters has survived the terrifying political, cultural and spiritual convulsions of Europe in the 20th Century? How much warping is needed to warp a man? What does it mean when the network commentators tell us repeatedly that this pope displays warm "human" qualities? Is he, despite his experience, some kind of ecclesiastical Art Linkletter? Has he been so saintly that he has been able to find goodness in the Charles Mansons he has known? Or is he gritting his teeth?

The press tells us that Karol Wojtyla, Pope John Paul II, once worked as a laborer, that his father

was killed by the invading Nazis, that he is a "conservative" on this and a "progressive" on that, that he is a Pole. It tells us that the Polish Catholic Church, existing side by side with a communist regime, has retained its unity and its strength.

What does it mean to be a Pole? We know a few of those unveiled insults called Polish "jokes," we may now be able to name two Polish cities — the second being Cracow, the graceful old university city where Cardinal Karol Wojtyla presided, probably have a set of homesy and distorting stereotypes — babushkas and foundry workers in Gary, kielbasa and pierogi — which leave the impression that Poles are a provincial people who prefer isolation. In fact, the Poles have not been able to afford in insularity; through invasion, migration or encroachment they have had to accommodate French, Scots, Germans, Russians, Turks, the Golden Horde of Mongols, Scandinavians, Hungarians, Tartars, Rumanians, an overbearing gang called the Teutonic Order of Knights, an even uglier and larger gang called the Nazi Army, Italians, Czechs, Turks, Iranians. The Poles have developed the assimilatory sensibility of a people frequently overrun, dismembered and subdivided. But more than this, they have welcomed western ideas and have been among the most cosmopolitan of all peoples.

Pope John Paul II comes not from an isolated country, but from the center of the slavie world, and in a peculiar in-between sense, since the Europeans experience in the 20th Century has been to preserve a culture while being overrun, dismembered and subdivided, from the center of the Western world.

W.F. Reddaway wrote that Poland never had been able to escape its "ancient reputation for crazy

government, party strife and ill-calculated rebellion." But the same craziness, the absence of anything held reliably in place, has produced writers like Wittold Gombrowicz, whose masterful defense of immaturity (the narrator of *Ferdynand*) is told: "Young man, everything is honeycombed with childliness." should be read by anyone who believes that "adult" or "child" are identities. Compared with Gombrowicz, who had to live much of his life in exile in Latin America, Kosinski is a paranoiac bore, but even he is capable of some discerning humor now and then: the hero of *Being There*, a man from nowhere, learns to govern the United States by watching network television. And of course there is no funnier (not even Woody Allen at his funniest), filmmaker than Kosinski's friend and Sharon Tate's husband, Roman Polanski (Chinatown, etc.).

Cracow has nourished both the rebelliousness of the Polish arts (especially the theater) and the frequent revivals of patriotic idealism which have made Poland a difficult nation for its numerous foreign rulers to rule. If Pope John Paul II is unaware of this tradition of high spirited insurgency, he must have acquired his reputation as an intellectual the day he was installed as pope. An Italian pope may lead the church without knowing anything about Dante or Garibaldi, but John Paul II is, after all, a Pole.

A pope who skis, makes unfunny jokes and stands up to wade at the crowds as he is driven through them in a black Daimler may seem "human" to the newspapers. Americans love smilers, perhaps because the smile is the most treacherous expression. But it is more interesting to consider what kind of man John Paul II might be if he is truly human. It is not enough to compliment Pope John Paul II for occasionally assuming the humble manner of a country priest. The church always becomes more pastoral when it must convert and persuade.

Four hundred years ago, when his job was to neutralize the effects of the disintegrating, protestant sects, the Polish Catholic Church held synods, founded charitable brotherhoods, discouraged drunkenness, reformed convents and issued pastoral directions. Hieronymus Rozdzewski, bishop of Kujavia, personally catechized the people, including children, and spent a lot of time writing instructions for reform of church practices. Cardinal George Radziwill, one of Karol Wojtyla's predecessors as bishop of Cracow, concerned himself with the quality of the pastorale in his diocese and watched over the pious foundations. The least we can expect is that Karol Wojtyla, communism, another powerful religion, should have learned the value of flock-tending.

We should not expect him to smile. As a Pole and a Catholic clergyman and as a man living in this century, he, like Kosinski (a man of similar experience, stricken mute during World War II), has learned to balance himself above the abyss. His tensility, reconciler, peace keeper and protector of the faithful, without assurance — this is what makes the prospect of his reign interesting.

"Our lives are often 'unseen,'" Kosinski told the *San Francisco Review of Books*. "...habit dulls them, and the imagination doesn't perceive them as unusual, as dramatic, or as modifiable. Instead, it perceives them merely as 'being there.' The purpose of any imaginative enterprise from poetry to photography, from fiction to drama and film, indeed to religion, is to hint at the various possibilities of change: emotional, physical, political, spiritual, to instigate a change of will, of an awareness of the power of the individual, to change one's life."

Ungainly creed, but from one Pole to another perhaps worth considering if you happen to be a new pope looking around for guidance. Does the church hint at the various possibilities of

change? Does it instigate a change of will? If it doesn't, neither does the new pope believe, as Kosinski does, that man is vulnerable and unprotected. But man is vulnerable, in the cities where the American Catholics live a religion fails if it does not acknowledge this fact and engage itself in the risky struggle to try to provide some spiritual and emotional security.

A few years ago I knew a Catholic priest, Father M, whose parishioners were poor people in a Chicago district which had been prosperously German, then through encroachment and migration of non-invasion turned into a number of other things, none of which Father M could understand. He visited the hospitals and performed his priestly duties and gazed out the window of his office at the strangers passing in the sharp sunlight. Not enough of his old parish was left for a good bingo game, and those who lived near the church said they were afraid to come out at night. Father M kept a Nazi helmet on his desk. It had been pierced 30 years before by a bullet. It reminded Father M, of his own embattled situation.

I can imagine a papacy as mournfully isolated as Father M's church. And it wouldn't help if the pope drove around smiling at school children now and then. And if children wouldn't help much if after five years of deliberation the pope decided to allow priests to get married.

I've tried kielbasa, glocki, pierogi, kaczka piczona and zebek z wiprz wiprzowe, and it's my opinion, nothing more, that poles are not very good cooks. But at their best they are a thoughtful people who feel at home in the universe of ideas, and they are passionately rebellious and completely unpredictable.

Nobody expects Pope John Paul II to invite Roman Polanski to the Vatican or canonize Witold

Gombrowicz or go skiing with Jerzy Kosinski — and indeed if he is the man they say he is, none of the three would be worth his time. But the Father M.s of the world, sealed within their unbecoming selves, do offer an interesting constituency for a pope who is interested in recharging a church which everywhere, even in politically unstable Italy, faces perilously changing circumstances.

Mike Kirkhorn teaches journalism at U.K. His column appears every other Tuesday.

## Letters

The humane and generous act of John and Louise Smiley in posting the bonds of the jailed protestors has met with almost universal acclaim. We hope that people will not only admire them, but emulate them, and come to the aid of these victims of injustice and political repression.

We seek not only to free the eleven, but to expose and condemn the campaign of repression currently underway across this country against the Iranian student movement and its American supporters. And we share the defendants' opposition to U.S. government support for the dictatorial regime of the Shah, a support which is escalating as the people's struggle for a free and independent Iran deepens and spreads.

The Committee to Defend the Eleven

## Letters Policy

The Kentucky Kernel welcomes contributions from the UK community for publication on the editorial and opinion pages.

Letters, opinions and commentaries must be typed and triple-spaced, and must include the writer's signature, address and phone number. UK students should include their year and major, and University employees should list their position and department.

The Kernel may condense or reject contributions, and frequent writers may be limited. Editors reserve the right to edit for correct spelling, grammar and clarity, and may delete libelous statements.

Contributions should be delivered to the Editorial Editor, Room 113 Journalism, University of Kentucky, Lexington, Ky 40506

Letters: Should be 30 lines or less, 60 characters per line. Concern particular issues, concerns or events relevant to the UK community.

Opinions: Should be 90 lines or less, 60 characters per line. Give and explain a position pertaining to topical issues of interest to the UK community.

Commentaries: Should be 90 lines or less, 60 characters per line.

Are reserved for articles whose authors, the editors feel, have special credentials, experience, training or other qualifications to address a particular subject.

## "RIPREP"

SIR, THERE COMES A TIME IN EVERY MAN'S LIFE WHEN PROPER IDENTIFICATION IS COMPLETELY UNNECESSARY, FOR EXAMPLE, WHEN ONE HAS SCALED THAT GREAT MOUNTAIN OF YOUTH AND BECOME OF AGE TO CONSUME ALCOHOLIC BEVERAGES OR WHEN ONE HAS IMPROPER IDENTIFICATION!



## McDonald's will mean changes in SC Grill

Continued from page 1  
According to Donald Oberleas, chairman of the department of nutrition, there are no nutritional differences between food served at a commercial outlet and the Food Services menu. "Anytime students self-select their diet, particularly fast food, they may be lacking nutrients."

Oberleas said that fast food on campus would not have any great effect on the students' nutrition unless it accounted for the major meal of the day. The limited fast food menu is not a model diet, he added.

"Expense is a factor in many students' diets," he said. "There is evidence of malnutrition in some UK students." This state of health is usually not permanent, he added, since it is attributed primarily to the student's financial status.

Students living on campus have an opportunity for a well-balanced diet from the cafeterias, Oberleas said. If expense, special diet or taste preference conflict with campus dining, there are alternatives.

Cooking is not allowed in dorm rooms. However, refrigerators, coffee makers and popcorn poppers are permitted. These appliances are inadequate for complete meals, but when used jointly with the kitchenettes located in each dormitory, nutritious meals can be prepared. Individual menus can be designed to meet one's budget or dietary needs.

Students living off campus and having their own kitchens enjoy more convenience in preparing their meals. The availability of cooking equipment does not, however, insure ideal eating habits.

Oberleas recommends that students preparing their own meals include each of the four basic food groups (meat, milk, vegetable-fruit and cereal) in their regimen. This applies to dining out, too.

Living on a small budget without a kitchen can be difficult but not necessarily

Item	Wildcat Grill	McDonald's	Price difference (percentage higher)
Hamburger	2.75 oz., \$.50	1.8 oz., \$.40	22
Quarter Pounder	4 oz., .85	4 oz., .85	0
Fish Filet	2.4 oz., .70	2.2 oz., .70	10
Fries	2.5 oz., .30	2.4 oz., .40	33
		4.2 oz., .55	
Milk	1 pt., .20	1 pt., .30	50
Shake	16 oz., .50	16 oz., .55	3
Coke	12 oz., .20	12 oz., .35	70
	16 oz., .30	18 oz., .40	32
		22 oz., .50	21
			Total 26.5

This chart shows the price breakdown of items sold at both the Wildcat Grill and McDonald's and the percentage difference between the Grill's prices and McDonald's.

unhealthy. The National Restaurant Association reports that 37 percent of the food dollar is spent eating out. While this may be a large sum it can be spent wisely. The wide variety of eating places and choice of menus offered have made eating out more affordable.

Efforts are being made at UK to increase public awareness of nutrition needs. "Select groups, such as the athletic department, work toward good nutrition," Oberleas said. Students in the College of Home Economics work with local social agencies to promote good nutrition. The

agencies, which deal in food service are used as a teaching medium, he said. Oberleas and Rieman agree that incorporating fast food outlets into campus dining facilities will have no great influence or effect overall. If McDonald's is located on campus, though, it will compete with Burger Queen on Limestone Street, Burger Chef on Euclid Avenue and with itself. A new McDonald's is under construction on Limestone Street, across from Holmes Hall.

On the other end of the scale are the overweight. About 40 percent of UK's students are overweight, Oberleas said. Some of the extra poundage can be attributed to the "freshman weight-gain syndrome." The term has been coined to describe the weight problem confronting freshmen faced with new routines. The pressures of academics

## Wanted



## delivery persons

Part or full time  
Flexible hours and days  
Must be at least 18  
Must have own car  
Must be able to work weekends

\$285 an hour to start plus commissions and tips

Apply in person between 4:30pm and 9:00pm  
820 Lane Allen Rd  
1641 S. Limestone  
470 New Circle Rd. N.E.



## IT'S COMING THIS WEEKEND FROM PLAYBACK WATCH FOR THURSDAYS PAPER

### ENGINEERING SENIORS

McDonnell Douglas Corporation is one of the Nation's leading engineering firms. Our goal is to continue to excel by developing state-of-the-art methods and equipment.

Together with other engineers, you can contribute to the development of Advanced Electronic Systems and Mechanical Systems by using the most advanced techniques.

You have spent several years to attain your degree—spend 30 minutes with a McDonnell Douglas representative and let us show you how to turn that degree into a career.

The McDonnell Douglas Representative will be at your campus on

Tuesday  
October 31, 1978

Make an appointment through your Placement Office to talk to us about your future.



10% off to all students with valid U.K. I.D., for American cars and trucks. (Foreign Car Work Available)

## BRIM'S MUFFLER SHOP

"No Muff Too Tuff"

316 Old E. Vine 233-7174

Fri. 8-5:30  
Sat. 8-4

**JOE BOLOGNA'S**  
This is our corrected number.  
**252-1787**

### Join Us For An APPALACHIAN SEMINAR Oct. 27-29

- Take a scenic hike in beautiful eastern Ky. hills
- Visit with local people and craftsmen
- Experience Alice Lloyd College's Oral History Lab
- Attend a Mountain Church Service
- Listen to an old timer talk about his moonshinin' days

\$20.00 per person (includes food, transportation, insurance and lodging)  
Deadline for registration: Oct. 26

For more information and to sign up, call Drena Wire, Human Relations Center, 8-2751, ext. 8.

## LAN-MARK STORE



### YOUR LEXINGTON HEADQUARTERS FOR:

Down Jackets from \$39.99,  
Flannel shirts, Dickie Khaki Pants,  
Levi Straight Legs, Duckhead  
Painters Pants, Sweatshirts,  
Redwing Boots for Ladies & Men.

361 W. MAIN

254-7711

## Louie Nunn to speak at law school forum

Louie B. Nunn, governor of Kentucky from 1967-1971, will speak tomorrow at noon in the Law Building Courtroom. The speech is part of the Gubernatorial Symposium sponsored by the Student Bar

Association.

The symposiums will continue through Nov. 11, with a different candidate for the office of governor speaking each week. The speeches are free and open to the public.

The Kentucky Kernel, 210 Journalism Building, University of Kentucky, Lexington, Ky. 40506, is published each class day during the spring and fall semesters and weekly during the summer session.  
Third class postage paid at Lexington, Kentucky 40511.  
Subscription rates are mailed \$5 per year or one cent per year non-mailed.

Anthony Gray  
Advertising Director

Wally Dempsey  
Adv. Production Mgr.

INTRODUCING . . . . .



## LOWEST PRICES

For The Best Available Service "for Beetles only!"

155 Midland Avenue, Lexington, Ky. (606) 254-1382



FOR TEACHING PURPOSES ONLY

Styling  
Trims  
Shag Cut  
Layer Cut

Shampoos  
Blow Dries  
Wedges  
Perms

## LEXINGTON BARBER COLLEGE

171 E. HIGH 252-2460



R.N.'s!

Come to

A Place that's Growing...

A Place to Grow.

OSU Hospitals give RNs countless opportunities to learn and grow with the newest in technology, medical and nursing approaches...tuition reimbursement available for study at OSU...outstanding employee benefits...and salary commensurate with education and experience. If you are an experienced RN, we invite you to GROW WITH US at our expanding medical center.

For more information, mail coupon or contact:

Director, Nursing Service Administration  
The Ohio State University Hospitals  
410 W. 10th Ave., Room N-201  
Columbus, Ohio 43210 (614) 422-7023

Please send me more information about nursing opportunities at OSU Hospitals.

Name \_\_\_\_\_

Address \_\_\_\_\_

City \_\_\_\_\_ State \_\_\_\_\_ Zip \_\_\_\_\_

CP

An Equal Opportunity-Affirmative Action Employer

Lets JAM with  
**ALPHA PHI ALPHA**  
 Fraternity, Inc.  
 at **Greenstreets, LTD.**  
 Tonight  
**8PM-1AM**  
**DRINKS: Special Prices**  
 Admission: \$1.00  
 Another ALPHA Production

UP TO  
**\$100**  
 per month for plasma donations  
**\$200**  
 for special antibodies

Bonus for first time donors with this ad.

plasma alliance

254-8047  
 280 Oxford Circle 8 a.m. - 9 p.m. Mon. - Fri.  
 Cardinal Valley Shopping Center Sat. 9 a.m. - 3 p.m.



The UK Concert Committee and Virgo Productions will be presenting Natalie Cole in concert on Thursday in Memorial Coliseum at 8 p.m. Also appearing are Ashford & Simpson and Michael Henderson. Tickets are \$7 and \$8 at the Student Center ticket window, next to room 203.

## Natalie Cole to perform concert here Thursday

Singer Natalie Cole will be appearing Thursday night in Memorial Coliseum, along with Ashford & Simpson and Michael Henderson at 8.

Cole is the first main concert, aside from the Spotlight Jazz series, of the year.

She first appeared on the music scene in July 1975 with her first album, *Inseparable* which scored well on both the R&B/soul and pop charts. The album stayed on the charts for more than a year, a rare accomplishment for a debut album.

*Inseparable* also contained Cole's first two hits, "This Will Be" and the title tune.

The following year, she won two Grammy Awards, for "New Artist of the Year" and "Best R&B Female Vocal Performance" for "This Will Be." Her relatively quick success helped her step out from the cast by her father, the legendary singer, Nat "King" Cole.

*Natalie*, her second album which was released in May 1976, continued her success. Also a gold album, it contained the hits, "Sophisticated Lady" (her third No. 1 R/B hit in a row) and "Mr. Melody." That same year she received the Grand Prix top award at the Fifth Tokyo Music Festival.

The following year, Cole won her third Grammy Award: "Best Female R&B Vocal Performance" for "Sophisticated Lady."

Also in 1977, her third album, *Unpredictable* was released. It quickly became platinum and reached the number one position on the R&B/soul charts and made its way well into the top 10 on the

pop charts. The album contained two more hits, "I've Got Love on My Mind" and "Party Lights." The former made its made onto the top five on the pop charts.

Earlier this year, Cole's fourth album, *Thankful*, was released, and within the last few months, a double-live set, *Natalie Live* has come out, which has shown signs of becoming her biggest selling album to date.

Tickets for the Natalie Cole concert are \$7 and \$8 and are available at the Student Center Ticket Window, next to room 203, from 10 a.m. to 4 p.m. They are also available at Barney Miller's, and at Dawahare's.

## Auditions tomorrow and Thursday for 'Midsummer Night'

Auditions will be held tomorrow and Thursday for the UK Theatre production of Shakespeare's *A Midsummer Night's Dream*.

Tryouts will be held in the Guignol Theatre of the Fine Arts Building tomorrow from 7 to 10:00 p.m. and on Thursday from 7 to 8:30 p.m.

All UK students are eligible to audition.

The cast will include 17 men and eight women. Two roles, including that of Puck, are open to both men and women.

Dr. James Rodgers, chairman of the UK Theatre Arts Department, will direct. He said he would need at least one accomplished dancer for the production.

Play dates are December 5-9 with performers scheduled to begin at 8 p.m.

Printed audition guidelines are available in the Theatre Arts Office, 111 Fine Arts Building.

*A Midsummer Night's Dream* is one of Shakespeare's best known comedies, a fantasy whose plot includes runaway lovers, kings and queens from both the spiritual and material worlds, and a group of bumbling ruffians.

The production will also include several attendants to the various royal figures in the cast.

For further information, call 257-2797.

## Allman arrested in Florida

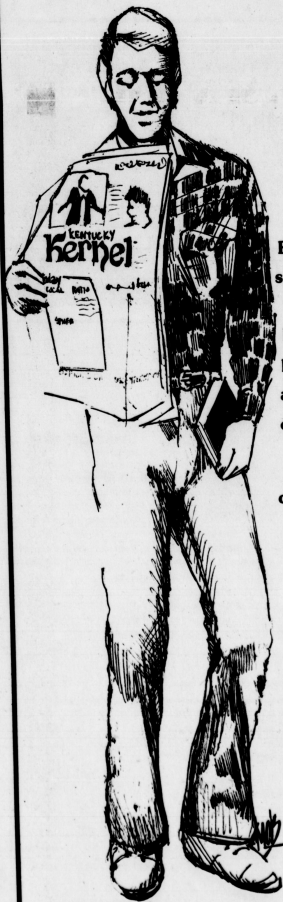
BRAENTON BEACH, Fla. (AP) - Rock singer Gregg Allman was arrested on a charge of disorderly intoxication while sitting on a motorcycle in the parking lot of a bar, police said Monday.

The leader of the popular Allman Brothers Band was the group, which recently held in a Manatee County Sheriff's department detention several years ago.

Allman reportedly was in this area rehearsing songs for a new album being recorded by the band, which recently held in a Manatee County Sheriff's department detention several years ago.

Allman reportedly was in this area rehearsing songs for a new album being recorded by the band, which recently held in a Manatee County Sheriff's department detention several years ago.

Cash in on  
 the "KERNEL"  
 every day!



By clipping money saving coupons from the "KERNEL" last week you could have saved as much as \$32.50. That kind of saving adds up.

Get the coupon saving habit!

The Kentucky Kernel  
**advertising**

IT'S COMING THIS  
 WEEKEND FROM  
**PLAYBACK**  
 WATCH FOR  
 THURSDAYS PAPER

GRAND CHINESE EAST RESTAURANT

LUNCHEON SPECIALS BANQUET FACILITIES  
 CARRY OUT SERVICES

South Park Shopping Center  
 3220 Nicholasville Rd.  
 Phone 272-6686

There Are Lots of Places Where You Can  
 BUY A CAMERA

BUT only an EXPERT can help you buy the Right camera AND SHOW YOU HOW TO USE IT.

Michael's Cameras

129 W. Short St. Phone 255-6463

JOE BOLOGNA'S

For 7 Day Campus Delivery  
 Call 252-1787

Delivery Hours:  
 Mon.-Thurs. Fri. & Sat. Sunday  
 6p.m.-12p.m. 6p.m.-1p.m. 6p.m.-11p.m.

50 cent delivery charge



"Home of SICILIAN PAN PIZZA"

The Kernel'll put a smile on your face!

Representative  
**UNIVERSITY OF SOUTHERN CALIFORNIA**

To be on campus  
**FRIDAY, NOVEMBER 3**

Graduate study information - all fields of Letters, Arts & Sciences  
 Special emphasis on Social Sciences

Contact  
 University Placement Service  
 201 Mathews Building 258-2746

There is more than one secret at ...



A ROBERT ALTMAN FILM

"A WEDDING"

DESI ARNAZ JR. CAROL BURNETT GERALDINE CHAPLIN HOWARD DUFF  
 MA FARBOWY VITTORIO GASSMAN ULLMAN GISH LAUREN HUTTON  
 VIVICA LIANDROS PAT MCCORMACK DINA MENELLI NINA VAN PALLANDT

STARTS TOMORROW!  
**CROSSROADS**

Tulin Cinema

# K sports 3 teams share SEC lead

By MIKE KENNY  
Staff Writer

The Southeastern Conference came up with only one win in three attempts against outsiders this past weekend, bringing its non-conference record to 20-13-2.

Auburn lost its second game at home in a 24-0 setback to Georgia Tech. The War Eagles opened the season with three straight road game wins, but have fallen victim in both games played at Jordan-Hare Stadium at Auburn.

Although the War Eagles have a 4-2 record, they are still unbeaten in conference play and share the lead with Georgia and Alabama.

## SEC Today

touchdown by way of air, while Army's lone score came on a return of a blocked punt.

The win gives Florida a 2-3 record and the Gators are currently in sixth place in the SEC.

In conference action, Kentucky was led by LSU 21-0 in the first conference loss for the Wildcats. The Cats have yet to live up to preseason expectations and things don't look very bright with Georgia

coming to town this weekend.

Kentucky now has a 2-3-1 record and is ranked fifth in the SEC, while LSU is 5-1 overall and ranked fourth in conference standings.

Georgia's Willie McClendon ran for 155 yards in a 31-0 win over Vanderbilt. McClendon has broken the 100-yard mark in every game this season and leads the SEC in rushing.

Georgia seems to improve every week and a Sugar Bowl trip is by no means out of the question for the "Wonderdog Underdogs." However, in order to take the conference, the Bulldogs must beat Kentucky, Florida and Auburn on the road.

Georgia is now 5-4 overall and tied for first place in the conference race. Vanderbilt is 1-5 and is the cellar in the SEC.

Finally, Alabama beat Tennessee 30-17 in a game played in Knoxville. Both

teams used second string quarterbacks in the contest with Tennessee going with senior David Rudder (a Knoxville native) and Alabama going with junior Steadman Sheley.

The win gives Alabama a 6-1 overall record and a share of first place in the SEC. Tennessee, on the other hand, fell to eighth place in conference standings with a 1-3-1 record.

THE KENTUCKY KERNEL, Tuesday, October 24, 1978—5

## IT'S COMING THIS WEEKEND FROM PLAYBACK WATCH FOR THURSDAYS PAPER

At your wedding, don't take the risk.

The best you can expect from an amateur photographer is amateur photographs. Is that good enough for your wedding? Call today for professional quality photography.

**Hollefield Photography**  
..... Your Wedding Specialist  
266-7948

↓ Good deals below! ↓

**258-4646**  
is the number to call for information about the best read bulletin board on campus. The Kernel Classifieds. The deadline for classified ads is noon one day prior to the day of publication.

## Classifieds

## Rates

PERSONALS  
One day, 85 cents.  
Three days, 75 cents per day.  
Five days, 65 cents per day.

CLASSIFIEDS  
One day, 90 cents.  
Three days, 80 cents per day.  
Five days, 70 cents per day.

The above rates are for ads of 12 words or less, there is an additional charge of 10 cents for each extra word per day.

## for sale

- PENDER BARR—after. Excellent condition. Black with small smudges and new case. \$300. Call 237-1328. 1902A
- TEN SPEED—excellent condition. Has new 800Watt motor. Best offer. 229-0232. 1902A
- GOOD QUALITY—electric stove, gas and electric refrigerator. Prices negotiable. Call 276-8048 after 5:30 Wed-Fri. Before 4:00 Tu-Thurs. 1902A
- FOR SALE—1974 Subaru GL 4 speed, air, power locks, sound-up, ready for winter. Must see. 272-5255. 1902A
- COBEN FRED—best friend and favorite tutor. Happy 18th Birthday. Love, Jennifer. 266-0404.
- 1971 DATSUN—602. Sharp. Great buy \$1,100. Phone 238-2308.
- 1974 CUTLASS SUPERBEE—4-cyl motor, power brakes, power windows, air-cooled. Good condition. 228-6205.
- 2000 GIBSON—Les Paul guitars. One Super-Sound-Down "Walrus-Deluxe" 285 \$385 after tax.
- 1975 TOYOTA—CR 3-cyl 800 stereo radio. Must see 262-2861, 272-9148 after 6:00. 19027
- 1986 CHEVY—Biscayne 4 cylinder starter mill new tires, good condition, economical, great for winter driving. 980-27478.

## HELP WANTED

### JOE BOLOGNAS'S

all locations part-time/weekends

- Cashiers
- Pizza Cooks
- Short Order Cooks

**THE LEXINGTON**—Awarded has two outstanding students for November 1978. Delivery times are 3 hours per month and pay is \$200 per month. Call Brad Lerner at 238-6966 for details.

**STUDENTS**—Would you like earn \$120 per week part time. Stop by SBN Broadway Inn. 30 Monday through Friday 9:15-11:00 p.m. or call 253-1851. Must have transportation.

**NEEDED BELLEVILLE**—grooms to work at Belle Isle Home Sales from Nov. 21st to 30th. Call 361-1282.

## for rent

- BELLDANCING**—lessons. For fun or exercise. By Sheila Call 235-2825. 2002A
- ROOM CLOSE**—to U.K. Share kitchen and bath. \$100 per month 248-0907.
- APARTMENT**—close to UK now available. Has kitchen appliances. \$250.00 per month \$250.00 after 5pm.
- EFFICIENCY**—Appl. in Cooperation for smoke. Available for single occupancy. 232-8651.
- SAFETY**—There's a pink carnation for you at the front desk. I'm very proud and happy to be your girl. Gummy PhD and hubby to be for you. 266-0404.
- WENDY MY**—best friend and favorite tutor. Happy 18th Birthday. Love, Jennifer. 266-0404.
- KILLED IN HIS**—prime, sprayed with gold and black. Life was hard for Wilkes and death wasn't that much for other. Boyd Hall learn the same without you. The money is all night, mighting all morning. How as R. A. In the great dorm in Monday. Wilkes' room. 2629.
- PRIVATE MEEB**—You been so good this week (even when bad)! Could it been love? Mom. 2602.
- BEANBANS**—I'm so glad I got you for it. LHM St. AGD Love, Sherry. 2602A
- THE STAIRS**—wishes to thank the upholders for their hospitality and after his Mom and Momma will be back another December thank. The Starbird will return to his form.
- KILLEN SQUIRRELS**—You're No. 1. Prove it tonight. 2602A
- AGD FRIENDS**—Congratulations on your anniversary! You'll always be No. 1 in our hearts. AGD Address. 2602A
- SUNEE K.**—So glad to have you for a AGD LHM St. You're the greatest! Rhonda. 2602A
- GLORIA B.**—You've been little bit shy. Your AGD St. Mad Dog. 2602A
- KAYE M.**—You're the greatest big sis ever. Love always your Alpha Gem LHM St. 2602A
- DAVE M.**—You are the best PM You. My Brother. Love Karen. 2602A
- MONA M.**—Happy Birthday. We love you. Downstairs. 2602A
- JAN W.**—I'm glad I'm in your class! Love your Mom. 2602A
- WHO ARE YOU?**—To the guy in the white shirt and blue jeans that you sit at JG 13:10 Friday night. Please respond. 2602A

## memos

**IT'S A PICKIN'**—and Learning Workshop. Workshop will focus on topics: Individual Instruction and Individual Instruction Session. Oct. 26, 8:11 a.m. Student Center 206. Free Sponsored by The Appalachian Studies Program of the Appalachian Studies Center and the Human Relations Center. 2602B

**SIERRA CLUB**—Forest Service Red River-Gorge cleanup. Volunteers needed. Enjoy after fall colors and help clean up after the summer's mess. Sat. Oct. 28, 9 a.m. to 1:00 p.m. at the Westport Arch. Natural Bridge State Park. 2602B

**DANA STEVENS**—Assistant Professor of Economics, University of South Florida. "Aust. Non-Binary Choice Rule" Thursday October 26, 10:30 p.m. Commuter 217. Sponsored jointly by the Department of Economics and The Graduate School. 2602B

**U.K. MODERN**—Dance Company will hold their regular meeting. Wed. Oct. 25 at 6 pm in the Women's Gym. Barker Hall All members must attend. 2602B

## services

- PRENATAL? NEED HELP?**  
All Activities Offered  
1-800-438-0039  
9 a.m.-9 p.m.  
Confidential
- TYPING WANTED**—Fast, accurate service, reasonable rates. All work guaranteed. Phone 277-2118.
- TYPING**—Professional services. Bluegrass Secretarial 253-8425.
- TYPING DONE**—Must item 80 cents a page. 90c plus. accurate. 253-2768. 1902B
- NEED TYPIST?**—Fast, accurate, experienced services. M.A. in English, former English Composition instructor. 258-0257
- WEDDING PHOTOGRAPHS**—By your wedding specialist. Robinette Photography. 266-7948.
- TYPING WANTED**—Mrs. E. Buchanan 900 Beth Lane. 277-0244.

## CUSTOM CAR STEREO

"Lexington's only car stereo specialist"

U.K. Ladies Special Free Installation On All Purchases With This Ad.

**1230 Versailles Road**  
5 Blocks from Rupp Arena  
Hours 10a.m.-9p.m. Phone 233-1889

## lost & found misc.

**LOST KEYS**—Black handle and silver ring. Found near the front of the building. Reward \$100.00. 266-0404.

**LOST KEYS**—Black handle and silver ring. Found near the front of the building. Reward \$100.00. 266-0404.

**LOST KEYS**—Black handle and silver ring. Found near the front of the building. Reward \$100.00. 266-0404.

## PERSONAL

**Wanted**  
I am looking for a person who is interested in a long-term relationship. I am a successful businessman and would like to meet someone who is also successful. If you are interested, please contact me at 253-1851.

## House Boys or Girls needed

Good meals plus gratuity.

### GAMMA PHI BETA SORORITY

255-3477  
MRS. T. O'BRIAN

## Spring Break in the Bahamas only \$25

will reserve your space on a 5 day cruise to Freeport and Nassau. Make your deposit before Nov. 1. The balance will be due Jan. 1. All meals and cabin included. Call Pat Travel Agency for further info at 255-7777.

## VIOLENCE, SEX and THE EVENING NEWS

18 WLEX	27 WKYT	46 KET	62 WTQ
NBC	CBS	PBS	ABC
6:00 Eyewitness News	News CBS News	Zoom GED	ABC News Midgets
7:00 Today	My Three Sons	MacNeil/Lehrer Dick Cavett	Jokers' Wild Newsworld Game
8:00 Grampa Goes To Washington	CBS Movie: "Foghorn"	Masterson Theatre	Happy Days Laverne & Shirley
9:00 Big Event: "Donner Pass"	U.N. Day Concert	Thieves Of Time	3 That's Company Taxi
10:00 Road To Survival	News	Thieves Of Time	Starky & Hutch
11:00 Eyewitness News	News	CBS Late Movie	Movies
12:00			

**FOR SALE**—1974 Subaru GL 4 speed, air, power locks, sound-up, ready for winter. Must see. 272-5255.

**COBEN FRED**—best friend and favorite tutor. Happy 18th Birthday. Love, Jennifer. 266-0404.

**1971 DATSUN**—602. Sharp. Great buy \$1,100. Phone 238-2308.

## roommate wanted

**ROOMMATE WANTED**—\$100 monthly. 2 bedrooms, 1 1/2 baths, walk from campus. Utilities paid. 264-9997.

**NEAR BUZZY**—with couple. Located on edge of campus. Two bedrooms. 263-2611.

**WOMAN'S OPAL**—ring gold band. Redwood White Classroom Bldg. 328-2347. 2602B

**LOST MAIL**—letters, gray, Shawnee area. please call 275-8084.

**MEN'S WALLET**—Lost near Chevy Store. Call Jimmy for Reward. 252-8252. 2602A

**GRANDPA GOES TO WASHINGTON**  
TUESDAY NIGHT MOVIE "Poppin' Stars." Steve McCQueen, Dustin Hoffman. The story of the triumph of the human spirit and a sensitive exploration of the bonds between a father and son.

**HAPPY DAYS**—When Ralph Gable is hypnotized to cure his fright after a tornado warning is posted, his loss of fear causes him to tempt fate by suggesting that the Fonz freeze training wheels for his motorcycle.

**LAVENDER AND SHIRLEY**—When Shirley chooses the day she decides to play the field general!

**BIG EVENT MOVIE**—Donner Pass. The Road to Survival. Stars: Robert Fuller, Diane McBain. An American pioneer wages a desperate fight to save the lives of his family trapped by a blizzard in the High Sierras as starvation forces them into a choice worse than death. (2 hrs.)

**THREE'S COMPANY**—Jack and Janet face the danger of losing Chissy to a fast-talking guy who dazzles her into believing her place is at his side—and a distant commune.

## help wanted

**FOAM MOLDING**—Machine Operator. Two part time positions available for person willing to operate foam molding machine. No previous experience necessary. Working shift 9 a.m. to 11 a.m. Monday through Friday or afternoon shift 12 p.m. to 4 p.m. Monday through Friday. Apply to Personnel Dept. in Plant Room. 175 Westland Drive, Lexington, Kentucky. No phone calls. Advt. 2602A

**WAITED 2000**—assistant to work 2-8 pm Monday through Friday and weekends. Nancy's Clean Laundry 184 Alexandria Dr. 2602B

## personals

**QUANTA**—You look HOT at "Randy Boyce." Your Aunt Tracy. 2602B

**JULIE S.**—Thanks for finally giving me a break. I thought there were too many. 2602B

**TRISTA CRB**—Hi Sherry. 13 please plug on plunger thank you from the bottom of my stomach. 2602B

## Advertisers

THIS PRIME TIME SPOT CAN BE YOURS!

The KERNEL publishes Prime Time TV Programming every Monday thru Friday.

Call Kathy Dixon at 258-5492 or your KERNEL Representative for more information on how you can boost your ad dollars effectiveness by placing your ad in this space.

I could use a boost!

# COLLEGE SURVIVAL THERE'S GOT TO BE A BETTER WAY!



There is. One free Evelyn Wood Reading Dynamics lesson will prove it to you. Today take the free Reading Dynamics lesson and you can dramatically increase your reading speed in that one free lesson.

Why let the responsibilities that college demands deprive you of enjoying the college life? With Reading Dynamics you can handle both—

all the reading you're expected to do and know plus still have time to do what you want to do.

Today you can increase your reading speed, dramatically at the free Reading Dynamics lesson. You've got nothing to lose but a lot of cramming and sleepless nights. Reading Dynamics. Now you know there is a better way. Take the free lesson and kiss your "No-Snooze" goodbye.

## SCHEDULE OF FREE LESSONS

Due to large attendance and limited seating, plan on attending the earliest lesson you can...

**TODAY, 2:30 p.m., 5:00 p.m., 7:30 p.m.**

WEDNESDAY,	Oct. 25 11:00 am, 2:00 pm
THURSDAY,	Oct. 26 2:30 pm, 5:00pm, 7:30 pm
FRIDAY,	Oct. 27 11:00 am, 1:30 pm, 4:00 pm
SATURDAY,	Oct. 28 12:30 pm, 3:00 pm

\*Lessons will be held at the **RAMADA INN SOUTH** in Lexington (525 WALLER AVE.) located 1 mile west of the U.K. campus across from St. Joseph's Hospital. (Between Nicholasville Rd. and Broadway - Free Parking Available)

The Seven-Lesson Evelyn Wood reading course, to be described in the free introductory lesson, will be conducted in the near future at a location near to the U.K. Campus beginning the week of Oct. 30.

**EVELYN WOOD READING DYNAMICS** © 1978 Evelyn Wood-Reading Dynamics, Inc.