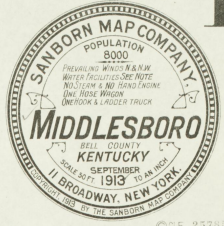


WATER FACILITIES

Gravity System of Water Works - Owned by Middlesboro Water Co. Water is supplied from 500 million gallon storage reservoir located 1 1/2 miles south of town...

FIRE DEPT

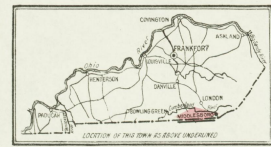
3 Paid men assisted by Police Dept - 1 Horse Wagon & 1000 2 1/2 hose 1 1/2 E. Truck & 500 lbs. hose - 3 Hoses - 400 ft. by telephone & 600 ft. by Fire Station



INDEX

Table with columns for Street Name, Number, and Page. Includes sections for 'STREETS', 'SPECIALS', and 'W.S.' (Water Supply). Lists streets from Ameshury Ave. to Salisbury Ave. and various landmarks like churches, schools, and businesses.

KEY: Legend for map symbols including fire hydrants, fire stations, and various building types. Includes a note: 'INDICATES RELATIVE HEIGHTS' and 'ALTERNATE STREET NUMBERS ARE ACTUAL CONSECUTIVE STREET NUMBERS AND ARBITRARY'.



10 BLOOMSBURY AV.

SEPT. 1913
MIDDLESBORO
KY.

THE H. T. HICKNEY CO.
NO. WITH CROWN ROOF. STEEL IN OFF. - LIGHTS - ELEC.
MAIN BUILDING EQUIPPED WITH GRANNELL
AUTO COMPRESSORS. AIR SYSTEM. 400 FEET
SIZES. 8' X 8' AUTO SAND BURNING MITS.
REFRIGERATORS. 10' FINE SYSTEM. BURNING SYSTEM
CITY WATER. CROWN IN CITY MAINS PRESSURE
200 LBS. SECONDARY SUPPLY 25,000 GAL. WT.
CITY WATER. 30' DIAMETER. 50' DIAMETER
CROWN. SPARKLER HEAD. CONNECTED TO
CITY WATER. 30' DIAMETER. CROWN. 40' DIAMETER.



311 N.E.

312 N.E.

ASHBURY AV.

N. 19TH ST.

N. 20TH ST.

GREENWOOD RD.

211 N.E.

212 N.E.

10

AMESBURY AV.

Yellow Creek

MAGIC CITY COAL & FEED CO.

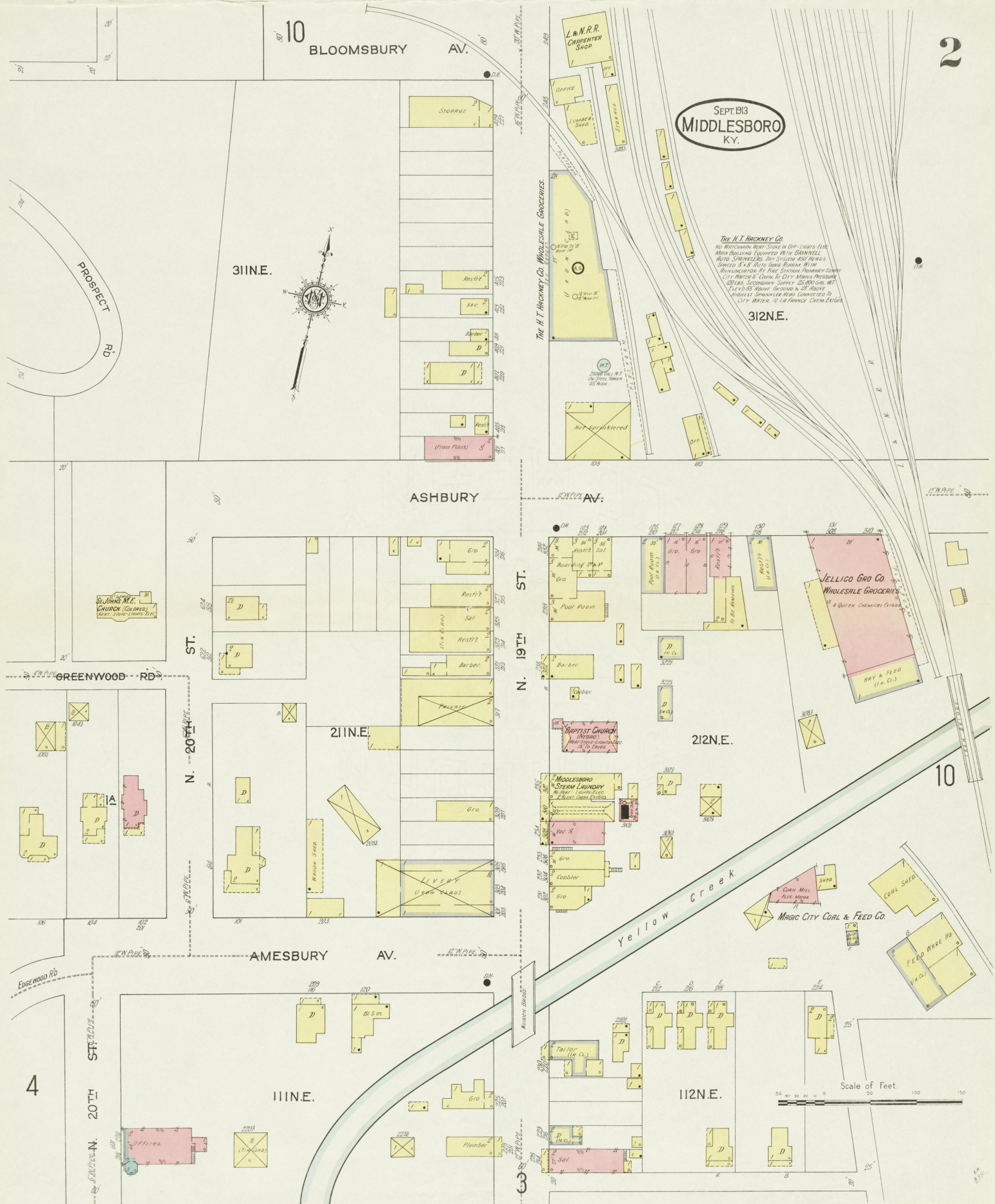
4

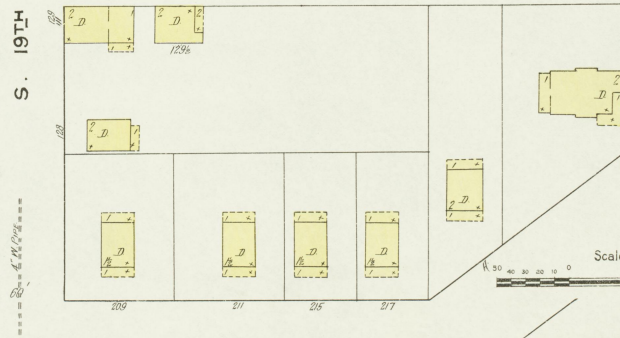
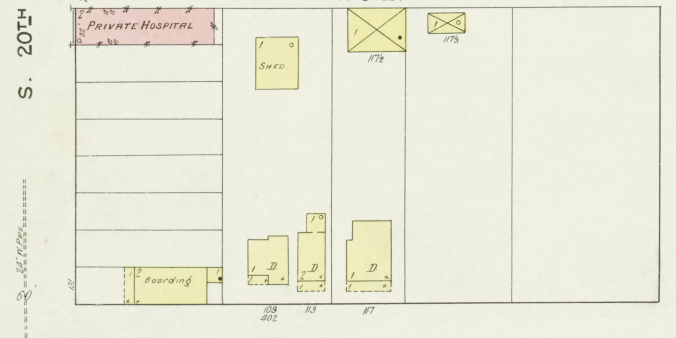
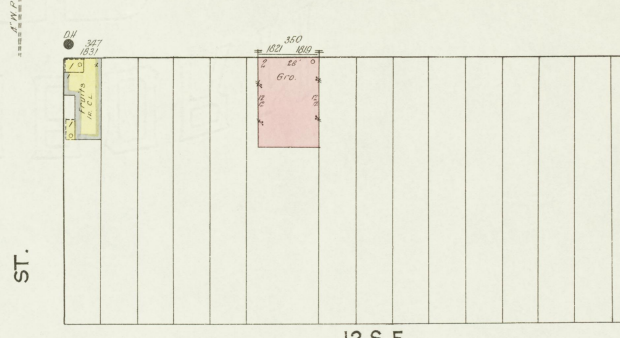
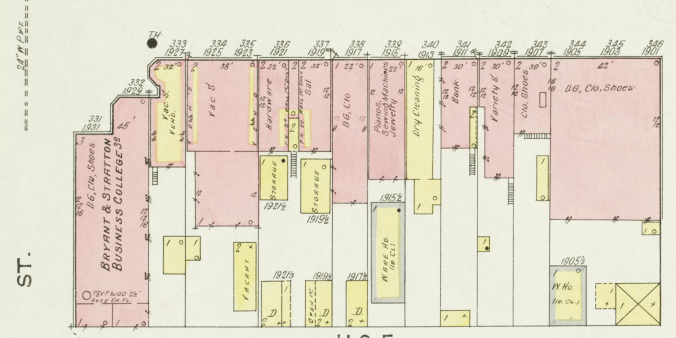
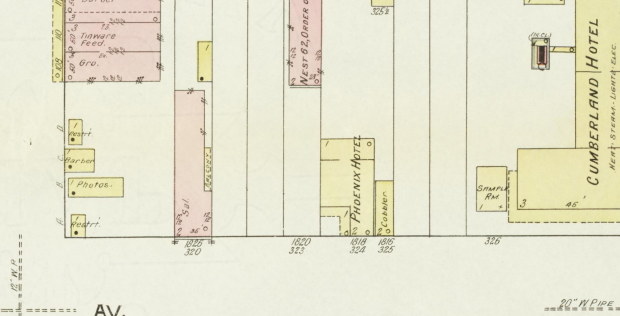
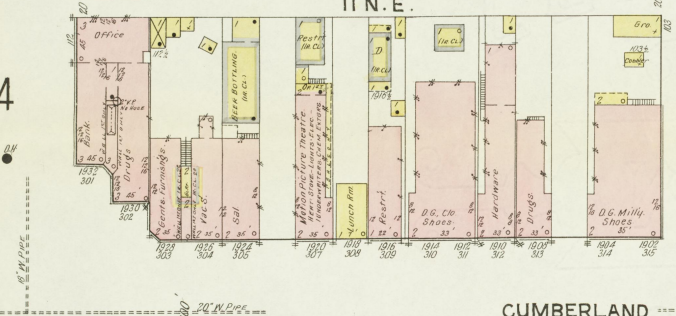
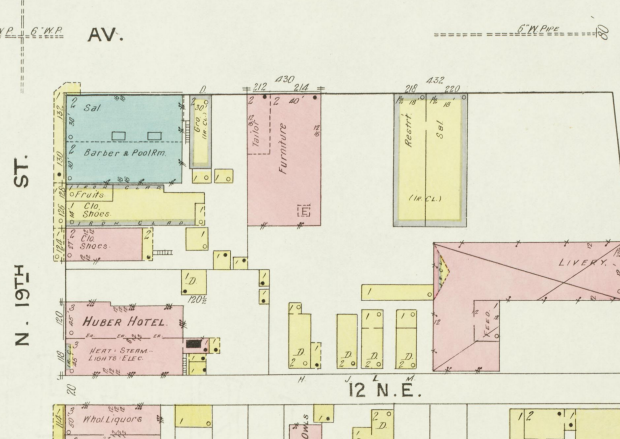
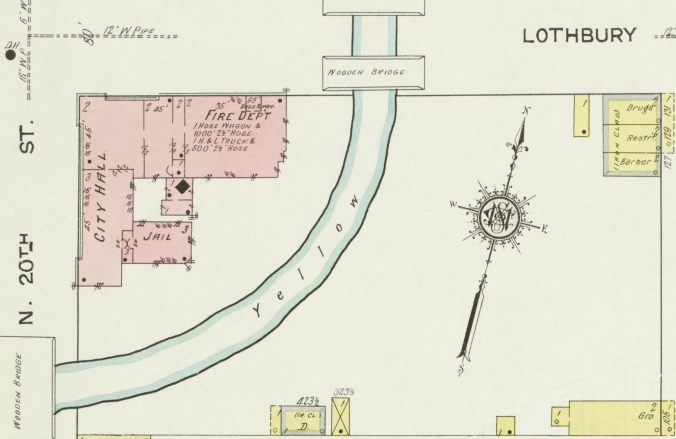
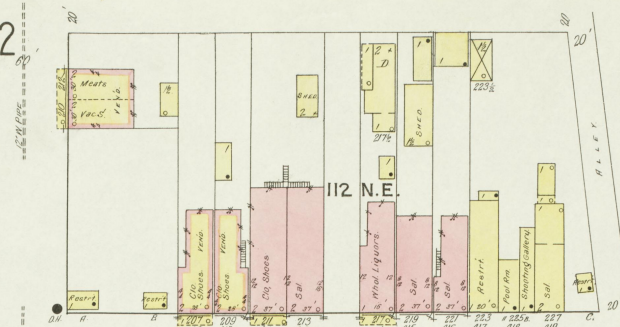
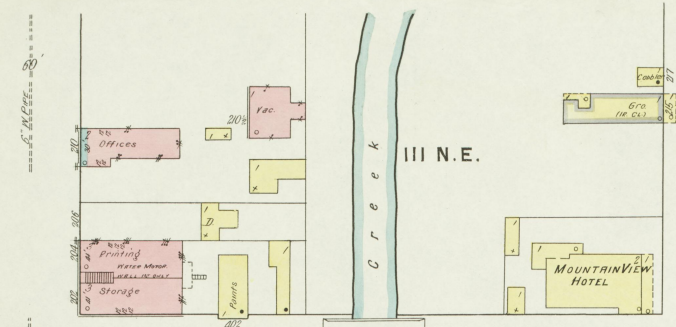
20TH ST.

111 N.E.

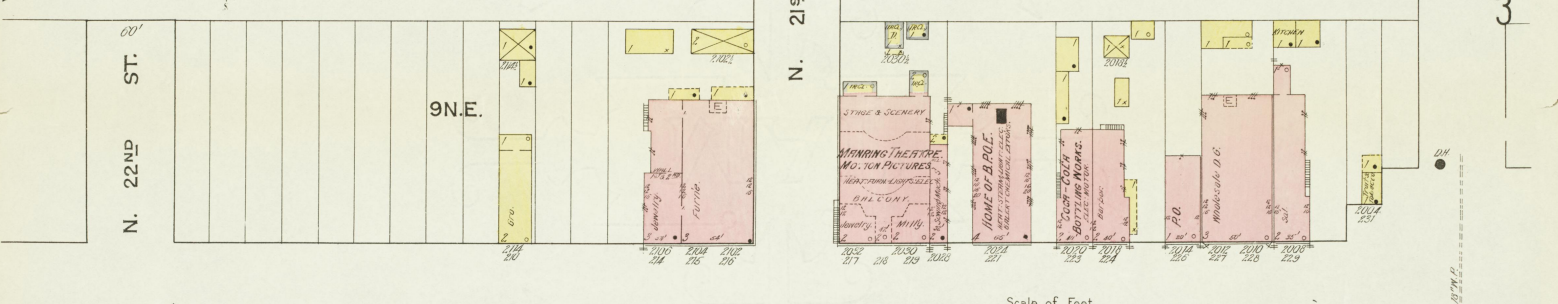
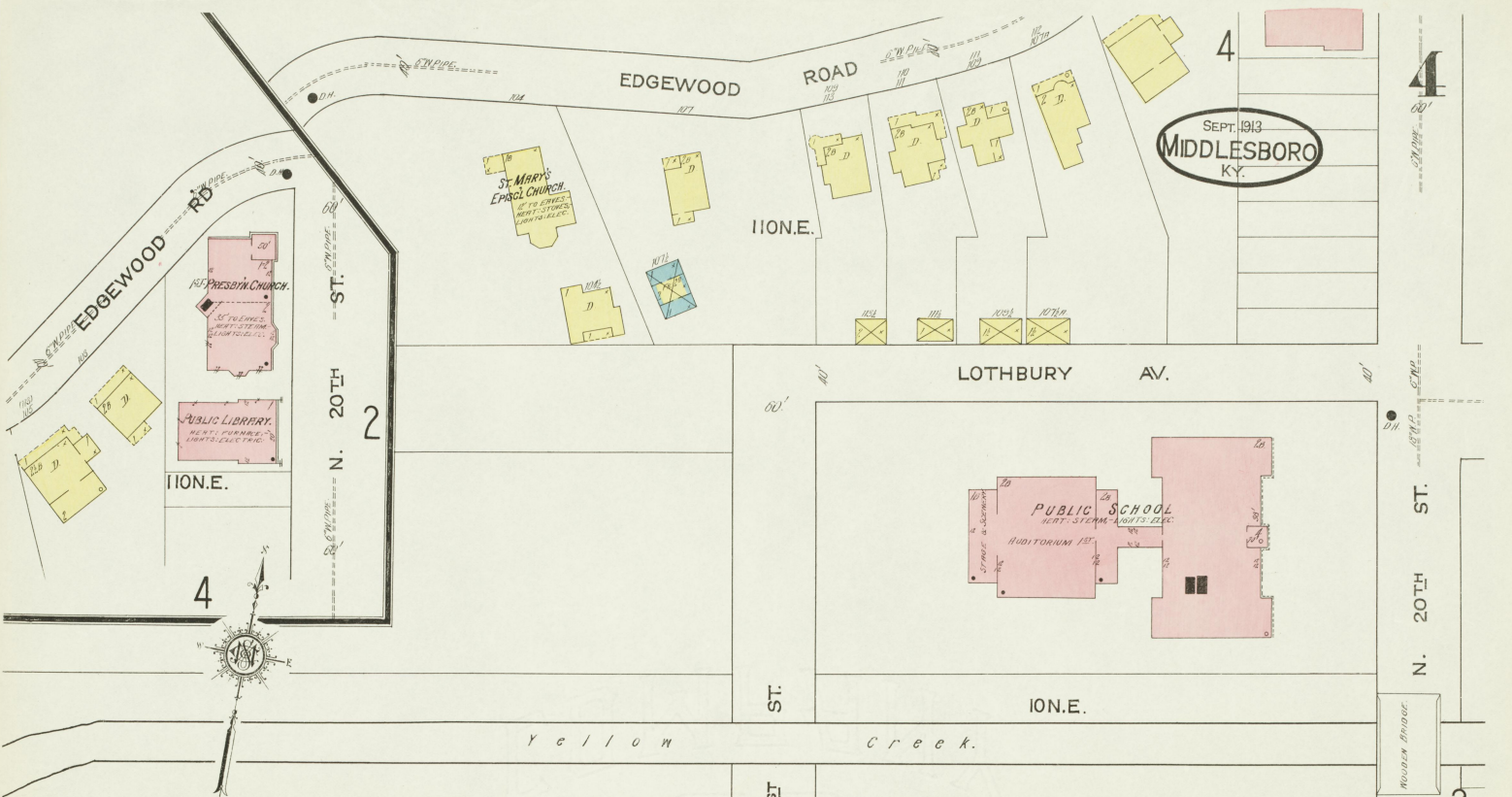
112 N.E.

Scale of Feet.





SEPT. 1913
MIDDLESBORO
KY.



CUMBERLAND AV.

W. CHESTER AV.

Scale of Feet

5

3

4

4

2

N. 20TH ST.

N. 22ND ST.

N. 21ST ST.

ST.

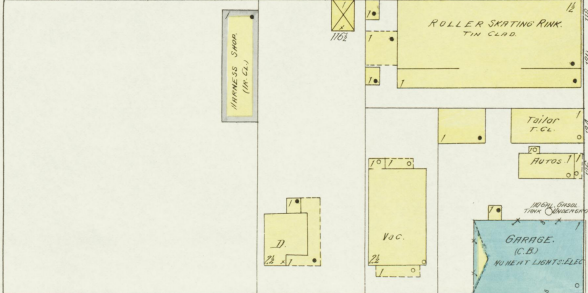
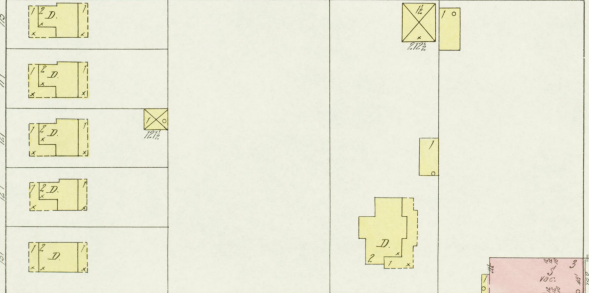
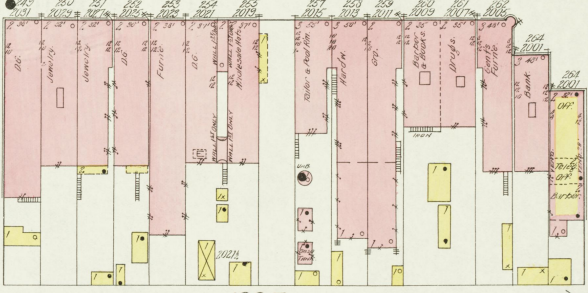
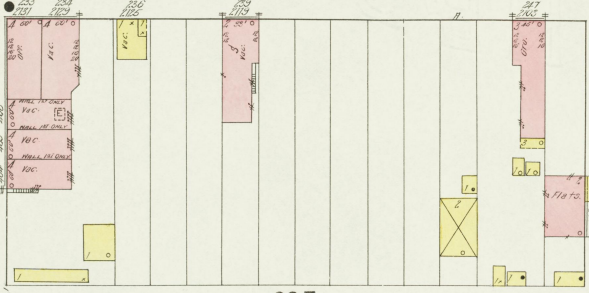
ST.

ST.

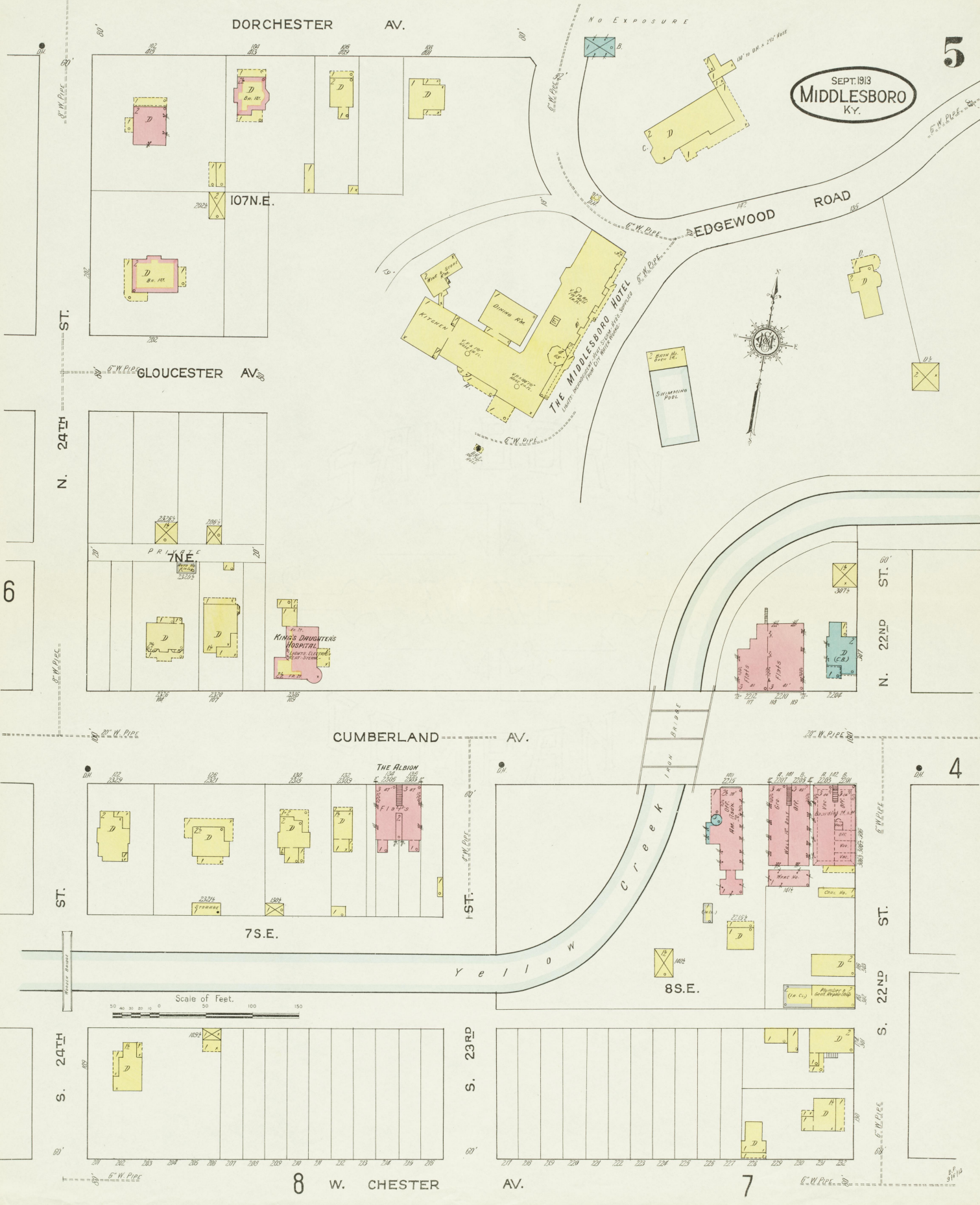
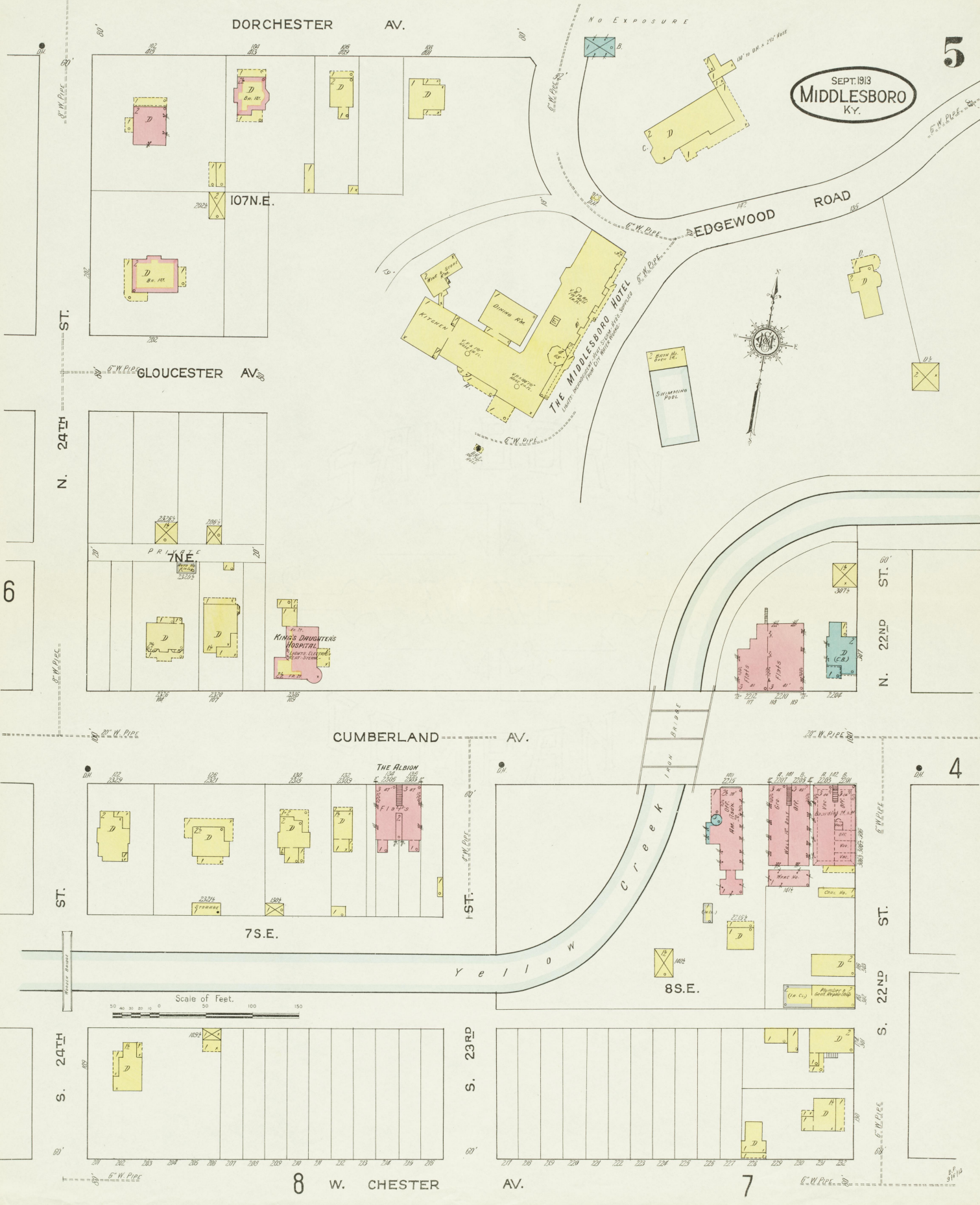
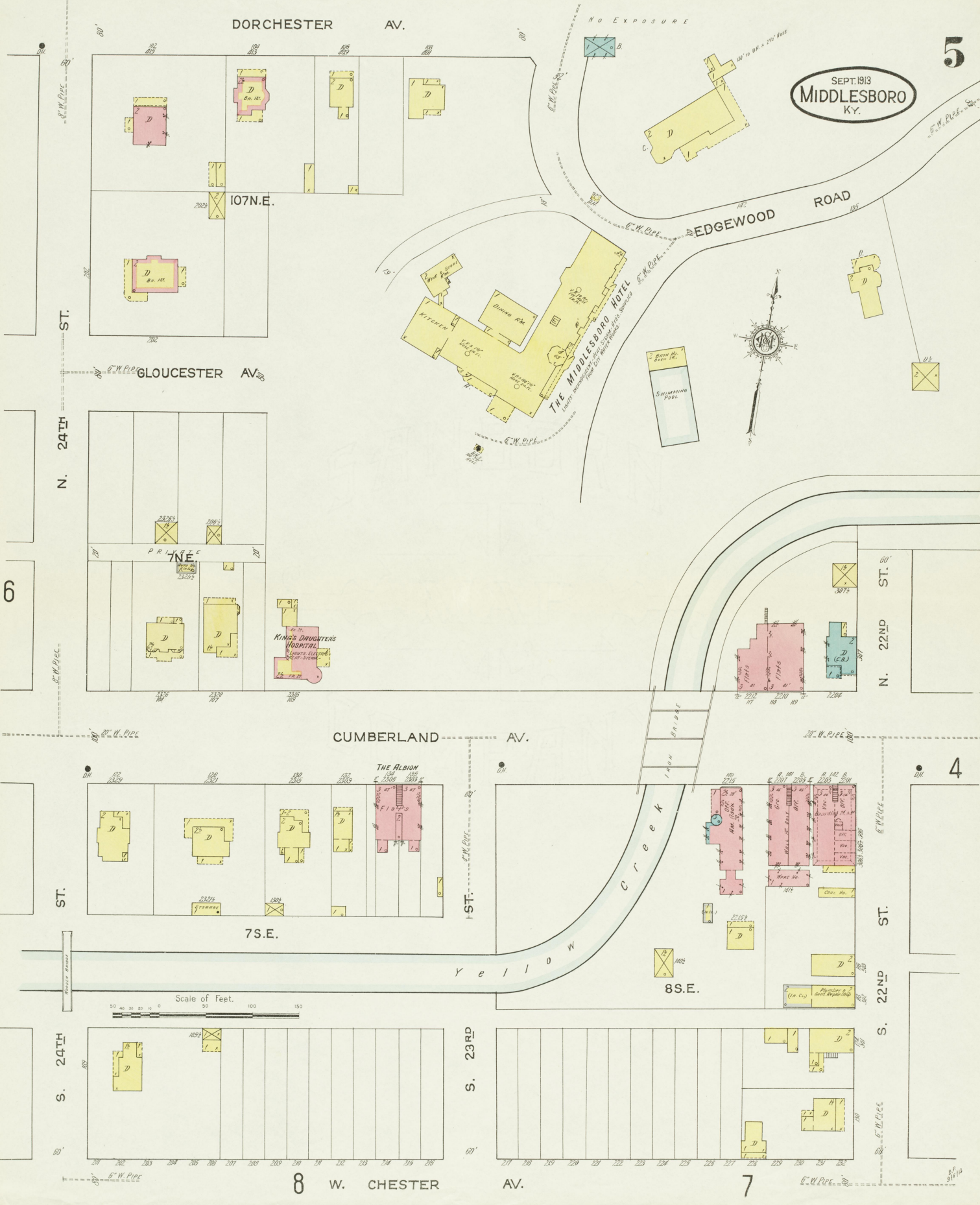
S. 22ND ST.

S. 21ST ST.

S. 20TH ST.



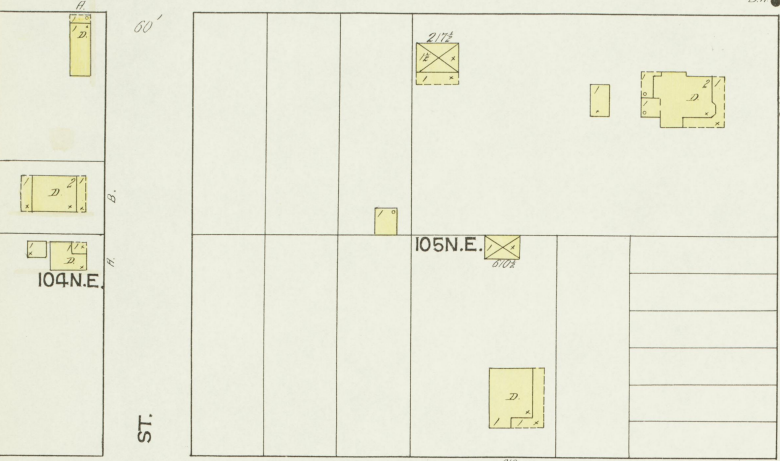
SEPT. 1913
MIDDLESBORO
KY.



DORCHESTER

AV.

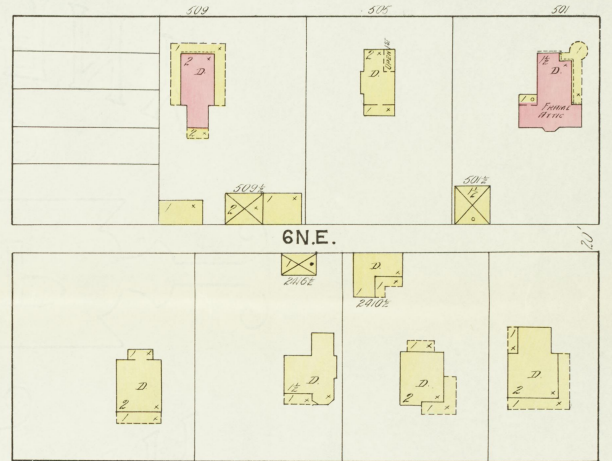
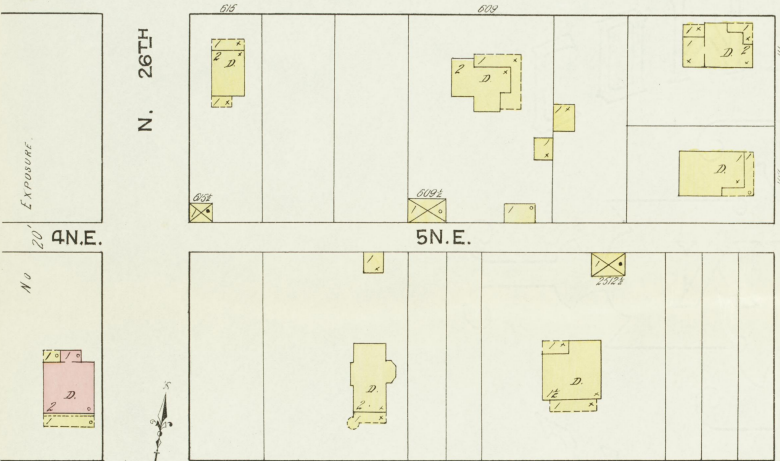
6



GLOUCESTER

AV.

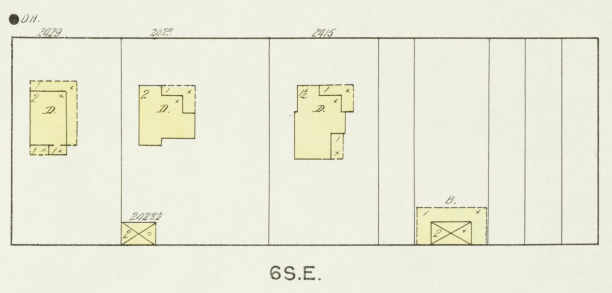
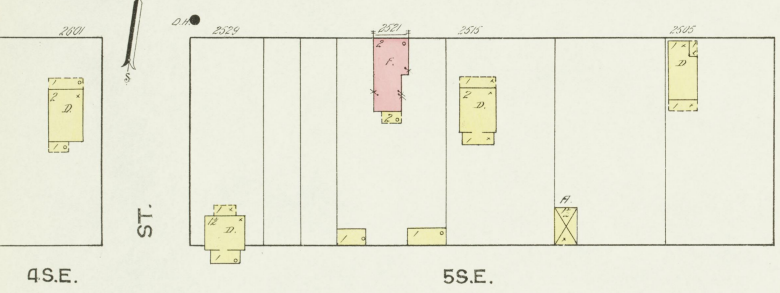
5



CUMBERLAND

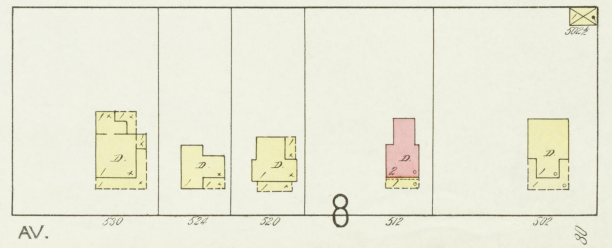
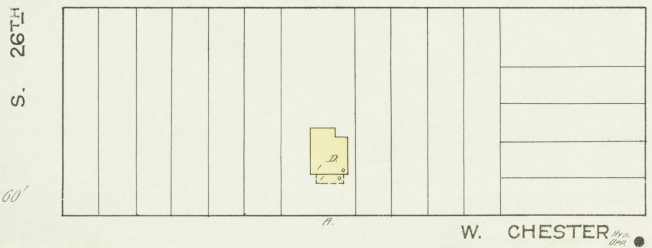
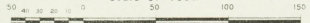
AV.

8



Yellow Creek

Scale of feet.



SEPT. 1913 MIDDLESBORO KY.



S. 20TH ST.

SEPT. 1913
MIDDLESBORO
KY.

110
S.E.

210
S.E.

310
S.E.

S. 21ST ST.

109
S.E.

209
S.E.

309
S.E.

S. 22ND ST.

108
S.E.

208
S.E.

308
S.E.

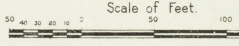
8

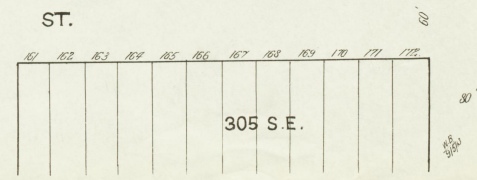
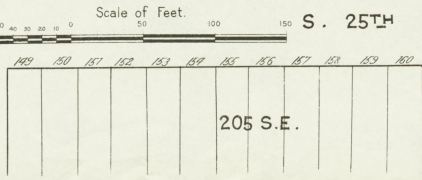
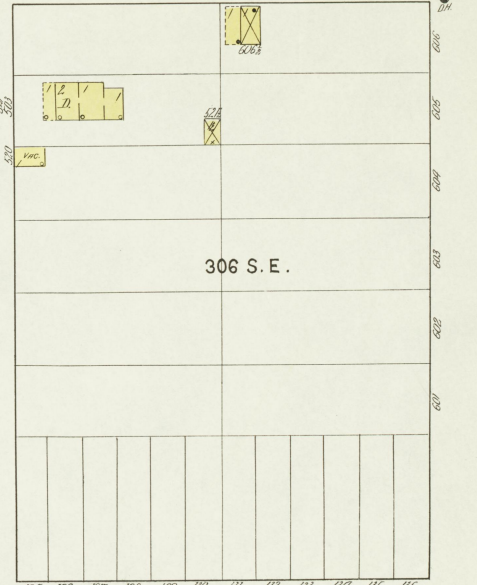
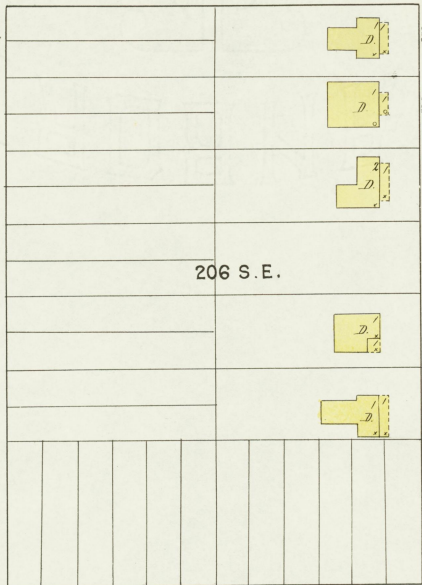
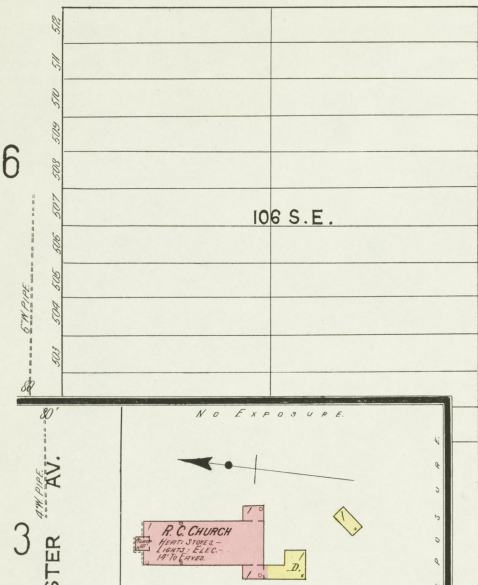
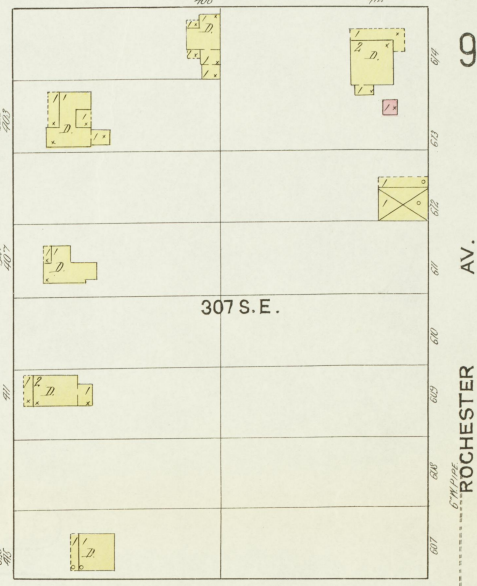
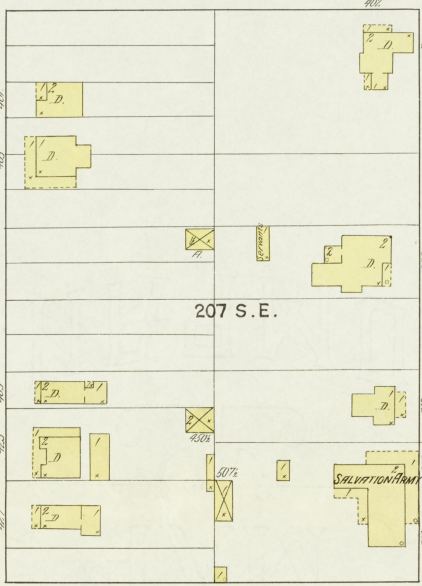
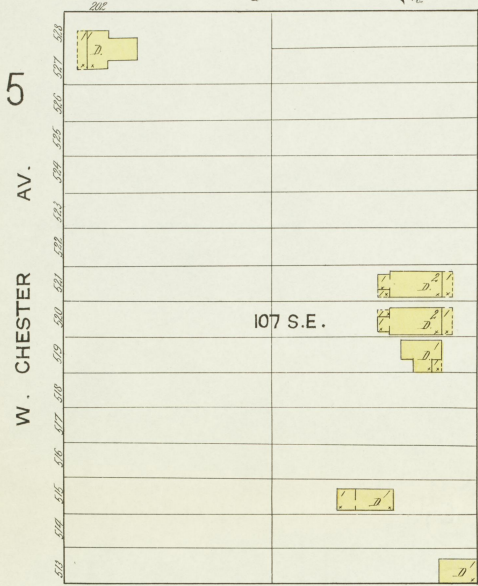
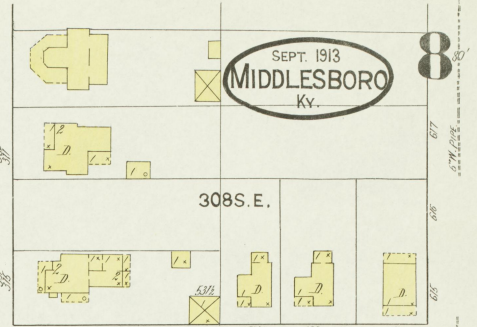
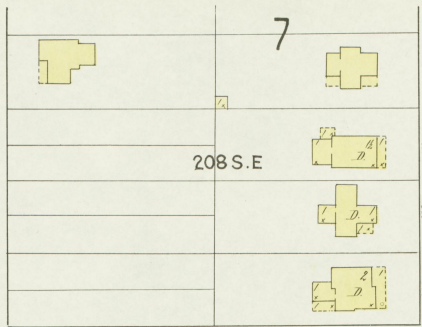
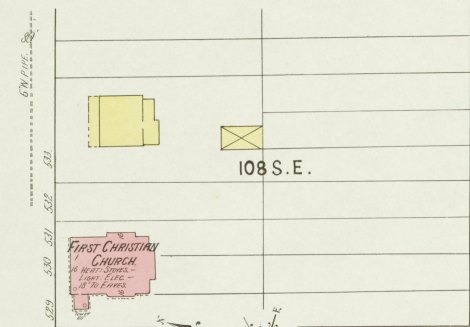
4
W. CHESTER AV.

WINCHESTER AV.

EXETER AV.

ROCHESTER AV.



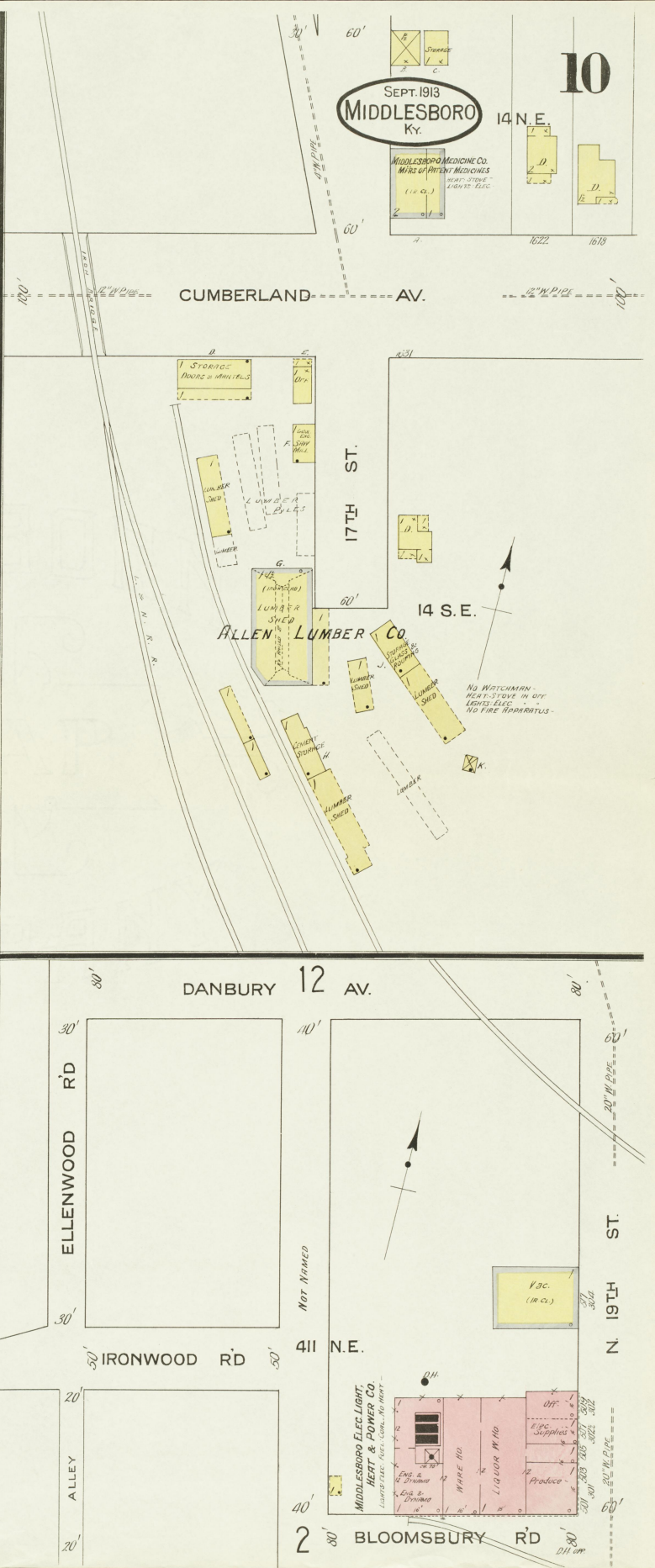
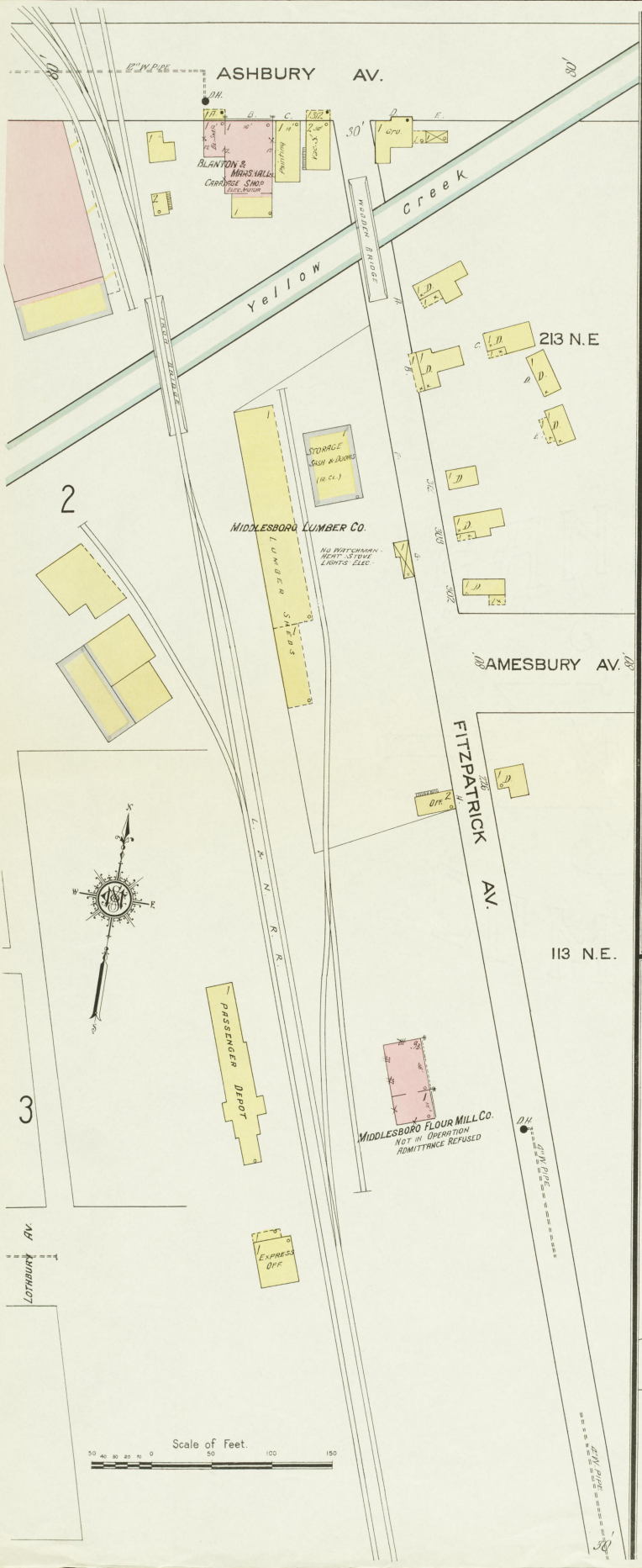


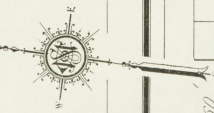
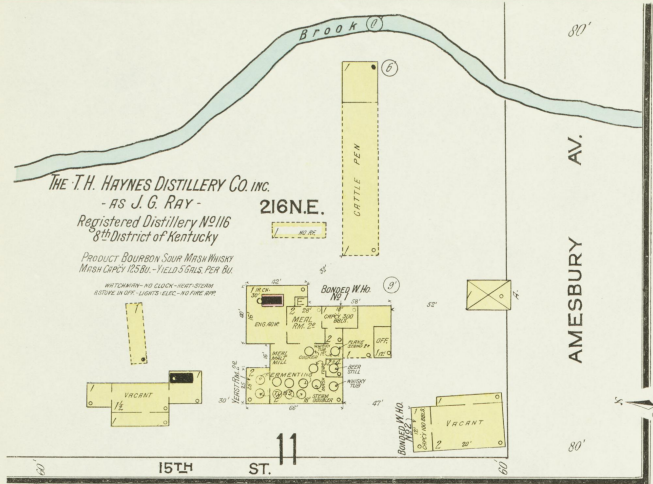
SEPT 1913
MIDDLESBORO
KY.



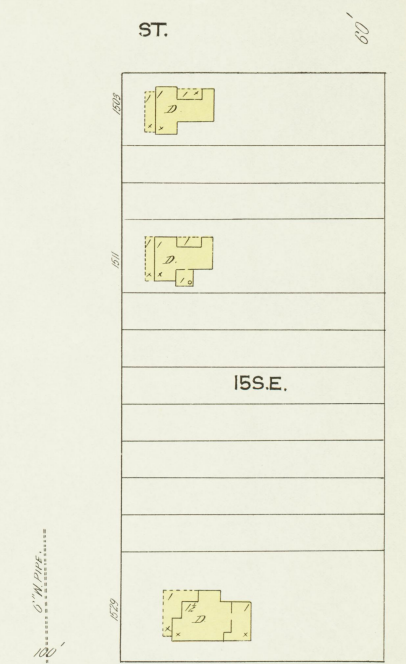
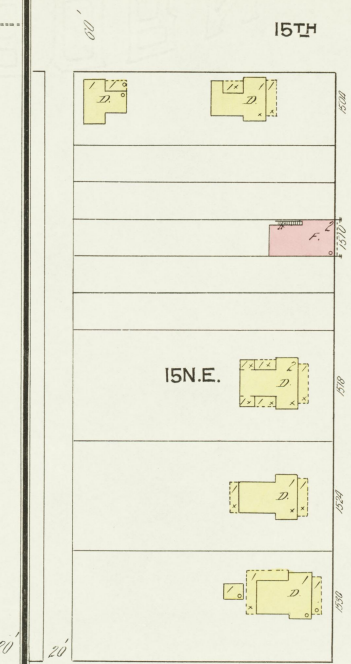
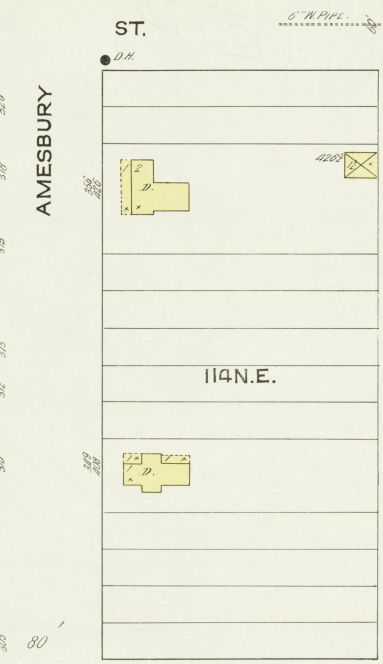
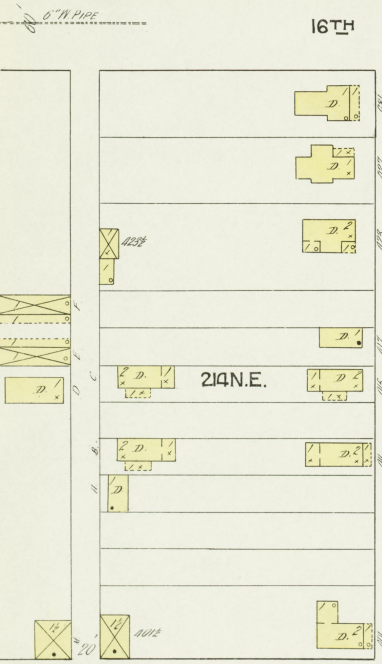
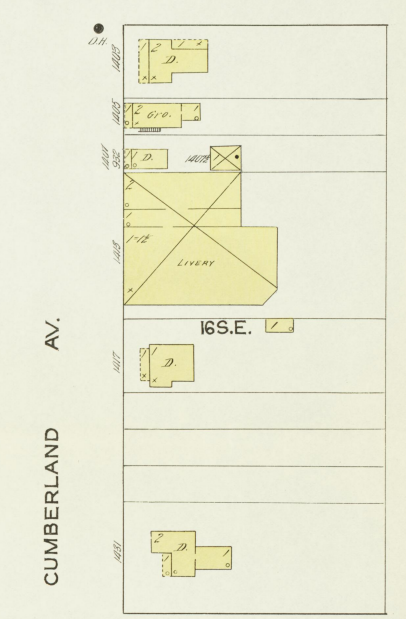
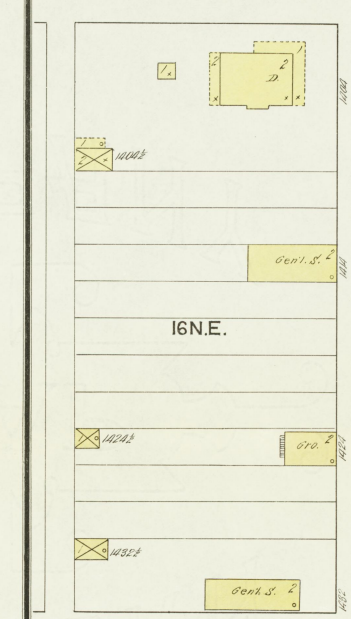
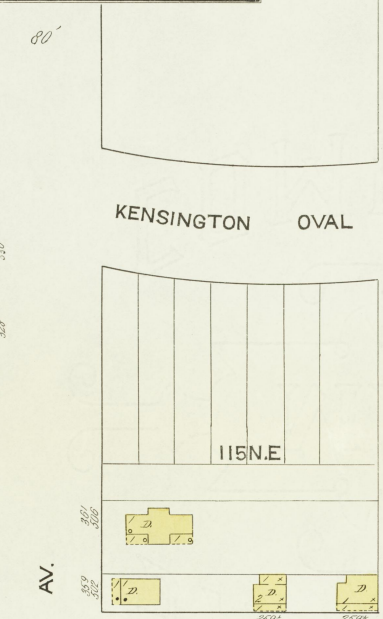
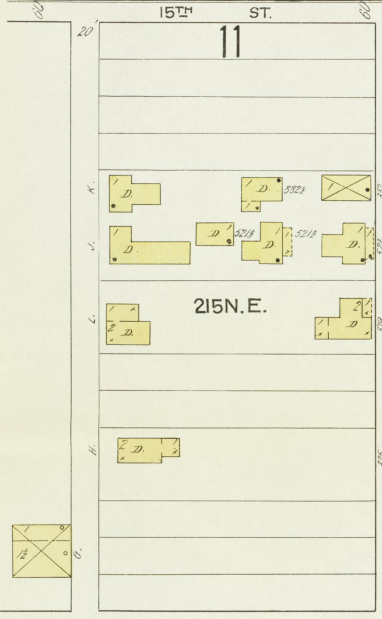
Scale of Feet
0 50 100 150







SEPT. 1913
MIDDLESBORO
 KY.



Scale of Feet.
 0 50 100 150

6" W. PIPE

6" W. PIPE

MINGO COAL CO.
CO. LYARD

COAL SHED

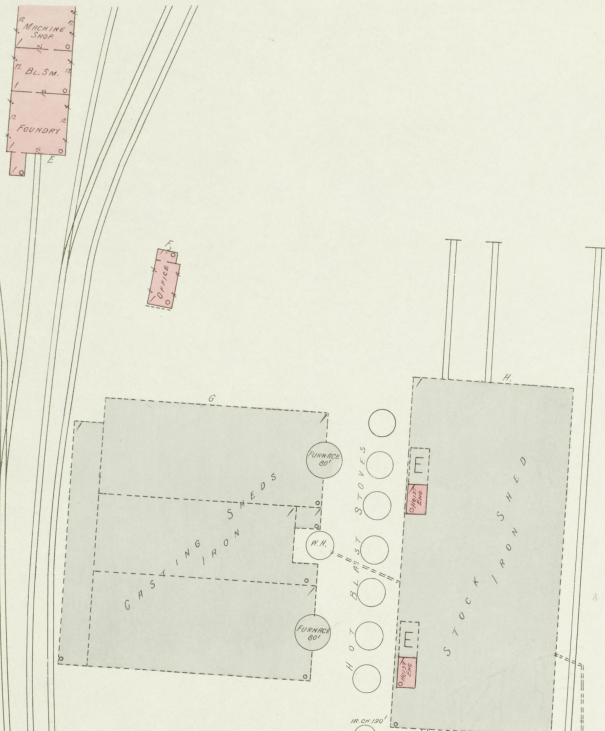
Located 2 1/2 Miles E. of P.O.

E. B. McFARLAND
Distillery 8th District Ky.
Mfg. of Bourbon Whisky from Sour Mash
Capacity 20 Bushels of Meal
Hert. Steam Lights Oil Lamps -
(From Plans)

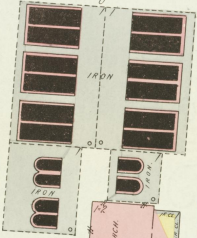
Located 2 1/2 Miles S.E. of City Hall

THE NEW SOUTH BREWERY & ICE CO.

WATERMAN, WOODMAN CLOCK, ELEVATORS, REFRIG.
FRIGS, PUMPS, STEAM, NO. HERT., FUEL, COAL,
LIGHTS, ELEC., LEAD, VEDS & HARDWARE, RESIDUARY
& CONNECTION TO CITY MAINS, ALSO SUPPLIED
FROM STREAM 400 Y. OF BARRETT BY SWIFT-
FROM STREAM & PLANT FROM ABOVE
STEAM PUMP, TIE & 2x8x12, CAPACITY 500,
ELEC. REC. MINER 10 HERT. CHEMICAL STORES.

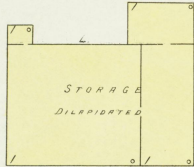


VIRGINIA IRON, COAL & COKE CO.



J. R. HOE & SON
IRON & BRASS FOUNDRY
No HERT., NO LIGHTS
NO FIRE APPARATUS

NOT IN OPERATION
DAY & NIGHT WATCHMAN, NO COOL,
NO HERT., FUEL, COAL & COKE
LIGHTS, ELEC. - NO FIRE APPARATUS.



STORAGE
DILAPIDATED

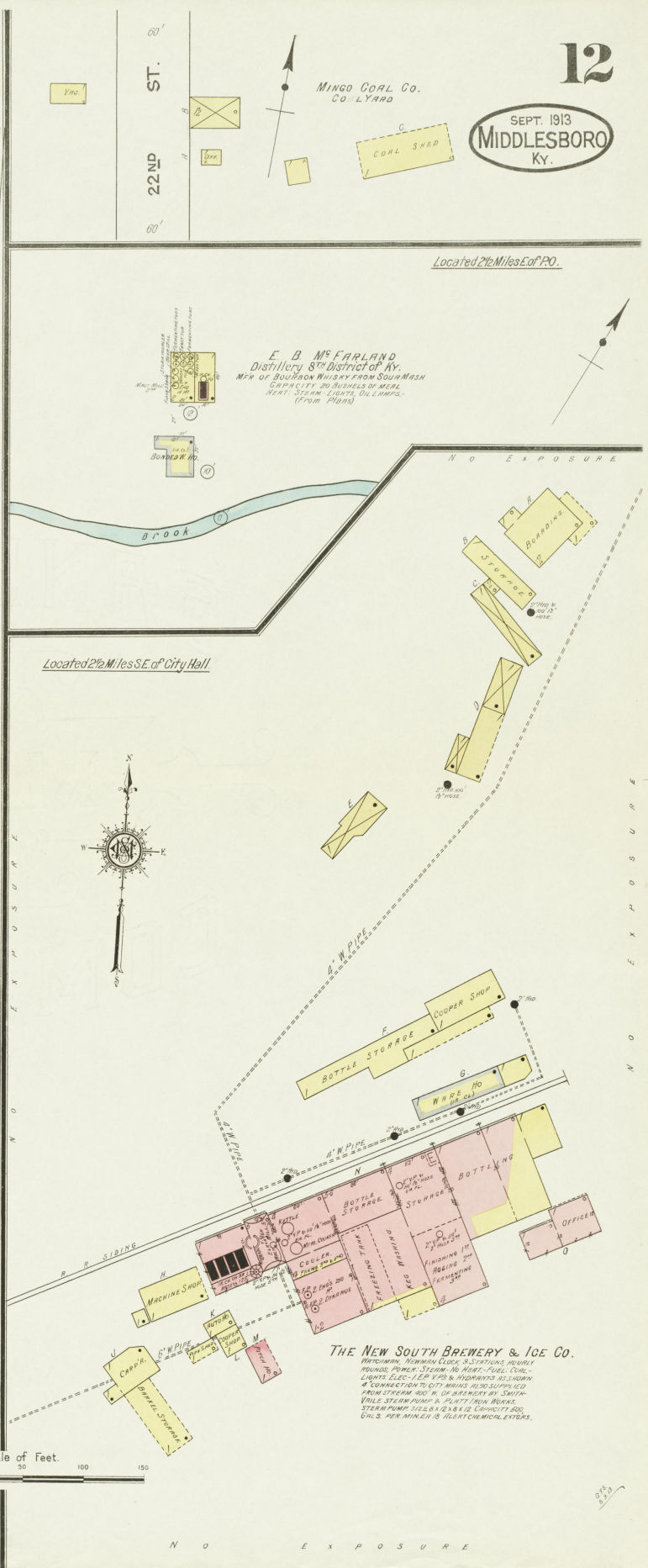
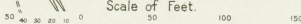


MACHINE SHOP

ELLENWOOD RD.

DANBURY 10 AV.

Scale of Feet.

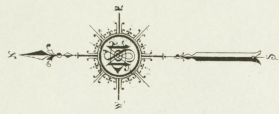


N O E X P O S U R E

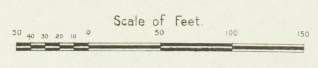
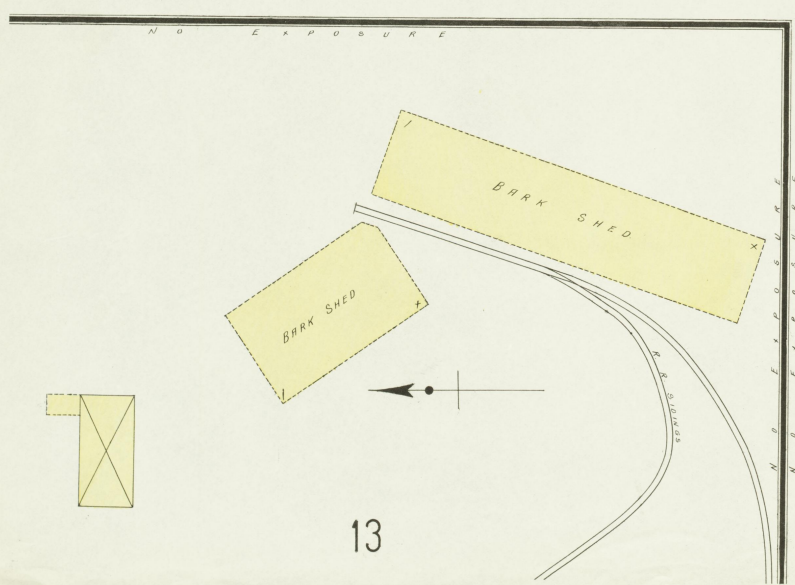
N O E X P O S U R E

N O E X P O S U R E

Located 2 Miles N of P.O.



NIGHT & SUNDAY WATCHMAN - KINZ CLOCK-10 STATIONS -
 HOURLY ROUNDS - HEAT STEAM - NO LUNGS POWER STEAM -
 FUEL COAL & SPENT BARK - WYDS HO SHOWN - 6' TANK
 WITH PRIVATE SPRING BY CUMBERLAND SHIP - WATER
 BILLS & BUCKETS GOING





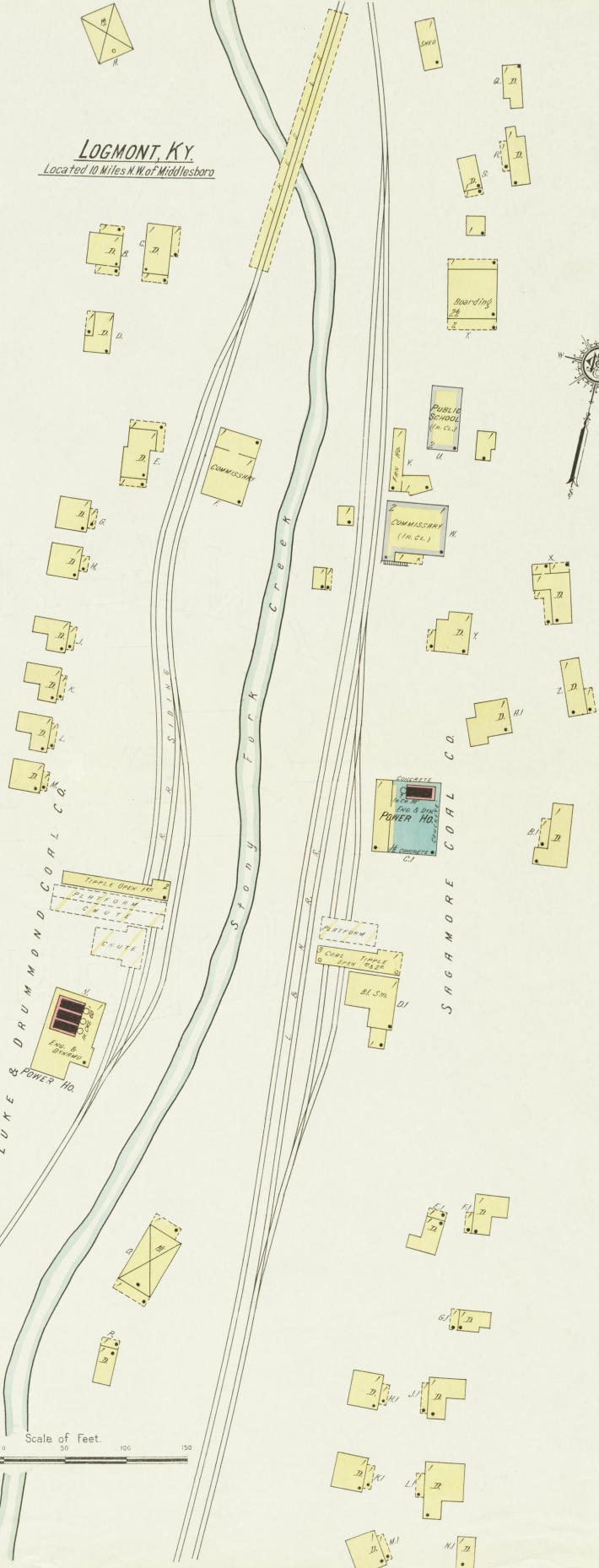
HIGHITE COAL CO'S. COMMISSARY

Located 8 Miles N.W. of Middlesboro,
or 2 Miles N. of Kelos Station.



LOGMONT, KY

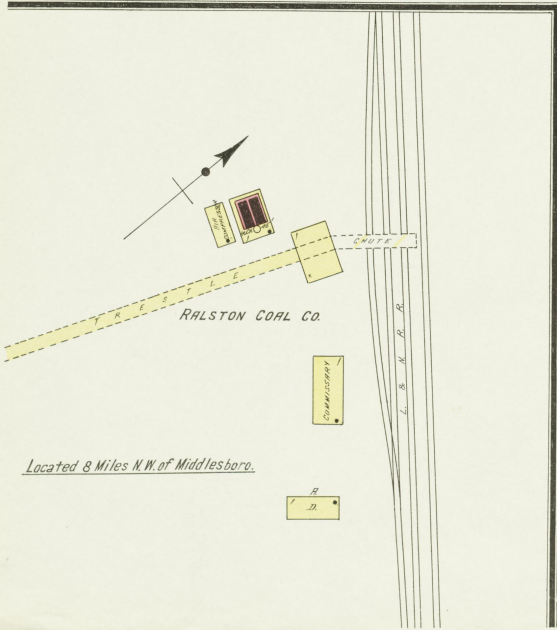
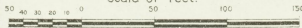
Located 10 Miles N.W. of Middlesboro



LUKE & DRUMMOND COAL CO'S

SAGAMORE COAL CO.

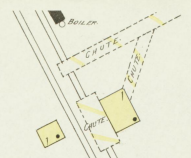
Scale of Feet.



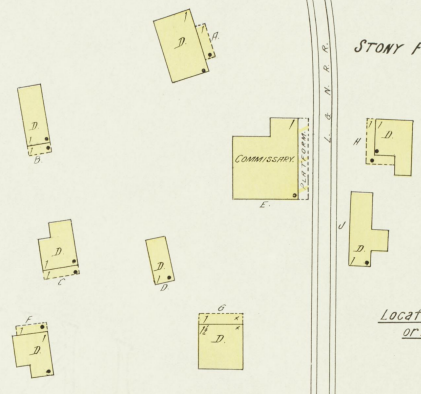
RALSTON COAL CO.

Located 8 Miles N.W. of Middlesboro.

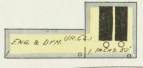
SEPT. 1913.
MIDDLESBORO
Ky.



STONY FORK COAL CO.



Located 10 Miles N.W. of Middlesboro,
or 1 Mile N. of Logmont.



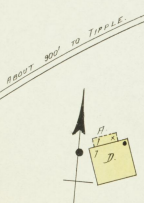
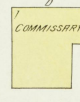
CLIMAX COAL COS. POWER HO. & TIPPLE

ABOUT 900' TO COMMISSARY

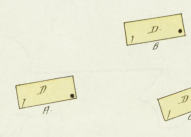
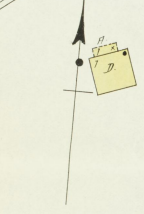
Located 5 1/2 Miles N.W. of Middlesboro.



L. & N. R. R.



CLIMAX COAL COS. COMMISSARY.



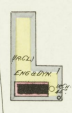
MONARCH COAL COS. COMMISSARY.



ABOUT 200' TO TIPPLE

L. & N. R. R.

Located 7 Miles N.W. of Middlesboro.



HIGNITE COAL COS. POWER HO. & TIPPLE.

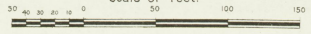


TRESTLE

Located 8 Miles N.W. of Middlesboro,
or 2 Miles N. of Relas Station.



Scale of Feet.



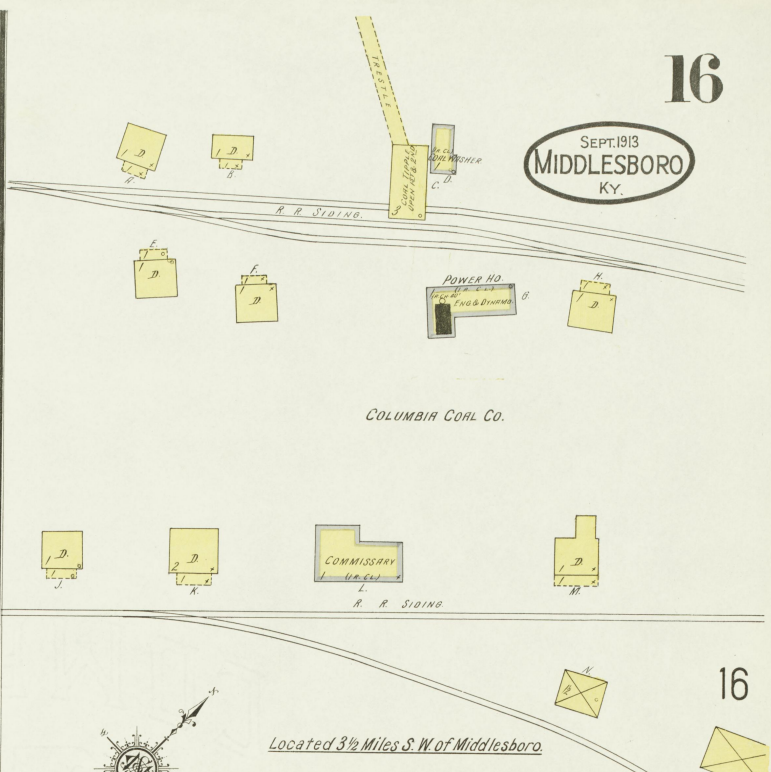
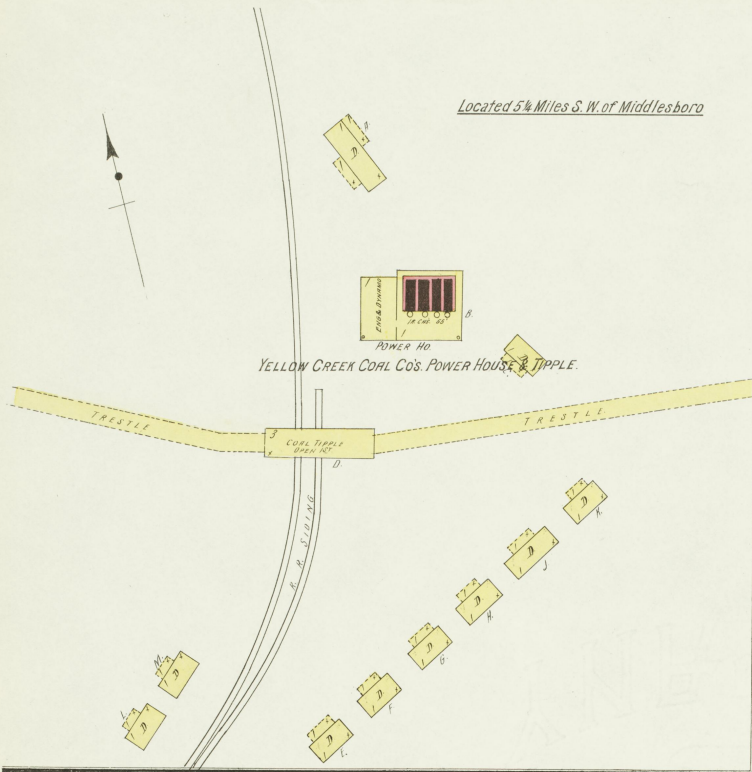
MONARCH COAL COS. POWER HO. & TIPPLE.



L. & N. R. R.

ABOUT 500' TO COMMISSARY

Located 5 1/4 Miles S. W. of Middlesboro



Located 3 1/2 Miles S. W. of Middlesboro

