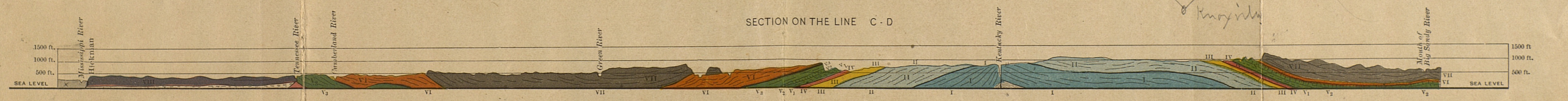


KENTUCKY GEOLOGICAL SURVEY.  
 JOHN R. PROCTER, Director  
**MAP OF KENTUCKY.**  
 From the Eclectic Geographies

- VIII Quaternary
- VII Carboniferous  
(Coal Measures)
- VI Sub Carboniferous
- V Devonian
- III Upper Silurian
- II Lower Silurian
- I Lower Silurian

SCALE  
 Statute Miles.  
 Natural Size as 1 to 1,575,000  
 2 1/2 Miles to the Inch.



An old map of Kentucky

*King's*