

JUNE 1901  
**WILLIAMSBURG**  
 KY.

3ER  
 35' x 35' x 35'  
**Recitation Hall**  
 HEAT - STOVES.

**WILLIAMSBURG INSTITUTE.**  
 HEAT - STOVES. LIGHTS - OIL LAMPS.

3ER  
 35' x 35' x 35'  
**Dormitory**  
 35' x 35' x 35'

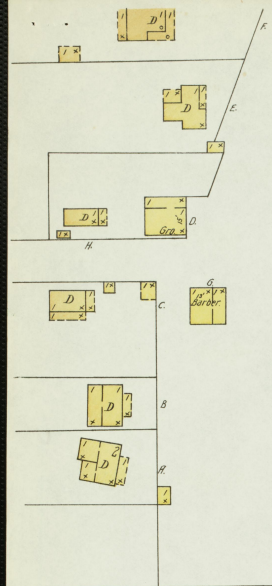
1/4 Mile S. W. of Court Ho.

Scale of Feet.  
 0 50 100 150

Map Edition  
 1 111-1225  
 Library of Congress



JUNE 1901  
WILLIAMSBURG  
KY.



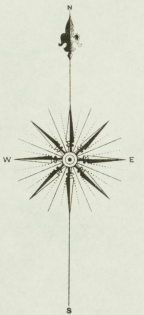
1/4 Miles S.E. of Court Ho

### KENTUCKY LUMBER COMPANY

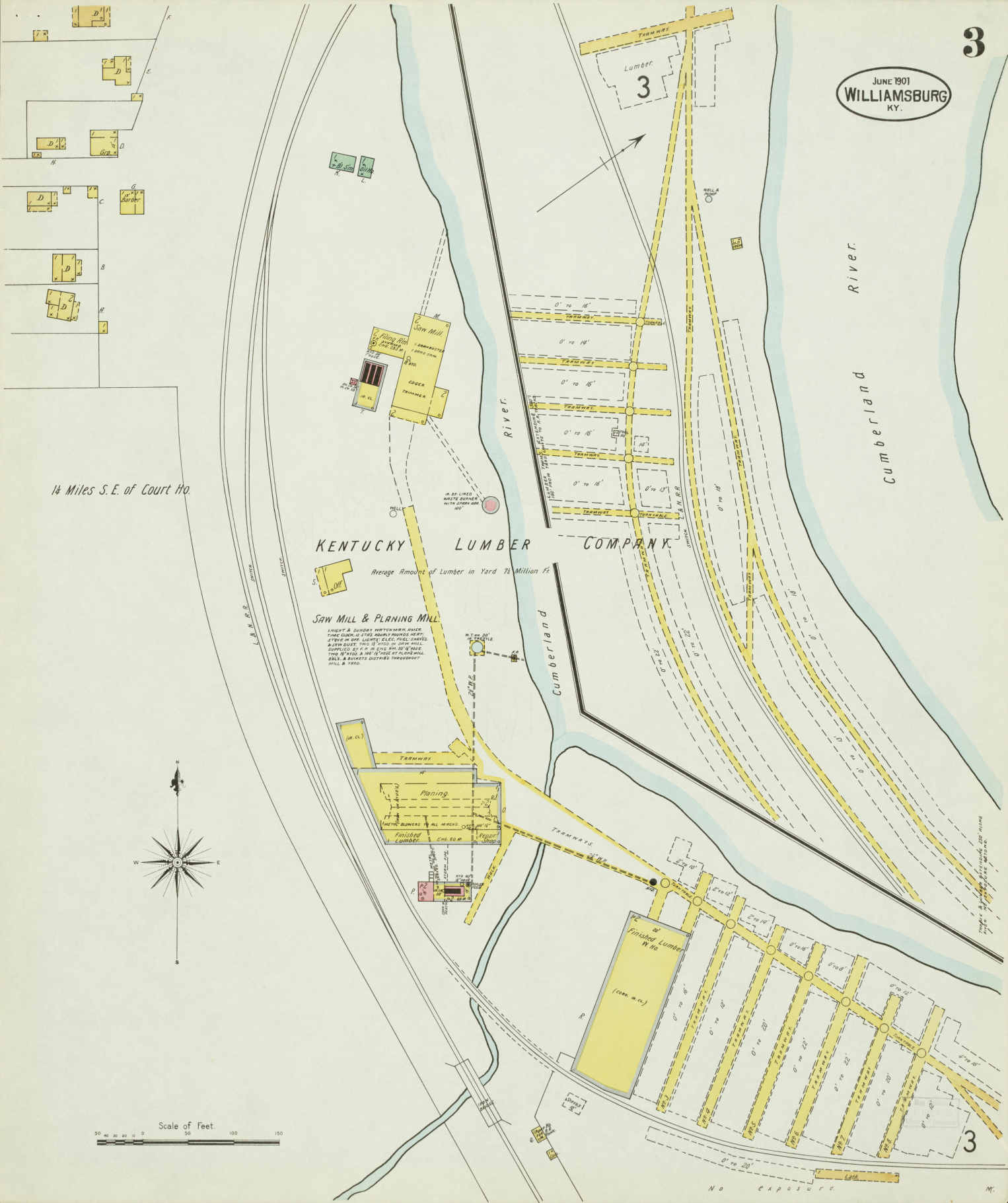
Average Amount of Lumber in Yard 72 Million ft

#### SAW MILL & PLANING MILL

LIGHT & SUNDRY WATCHMAN, RAMES  
THE COMPANY'S HEADQUARTERS ARE  
LOCATED IN THE LIGHTS, ELECT. FUEL YARDS  
& SAW YARD. THE 12' WIDE W. SAW MILL  
SUPPLIED BY P. H. IN ONE AM 30' WIDE  
THE W. WOOD & W. CHISEL BY PLANING  
MILL & BUCKETS DURING THROUGHPUT  
MILL & 1900.

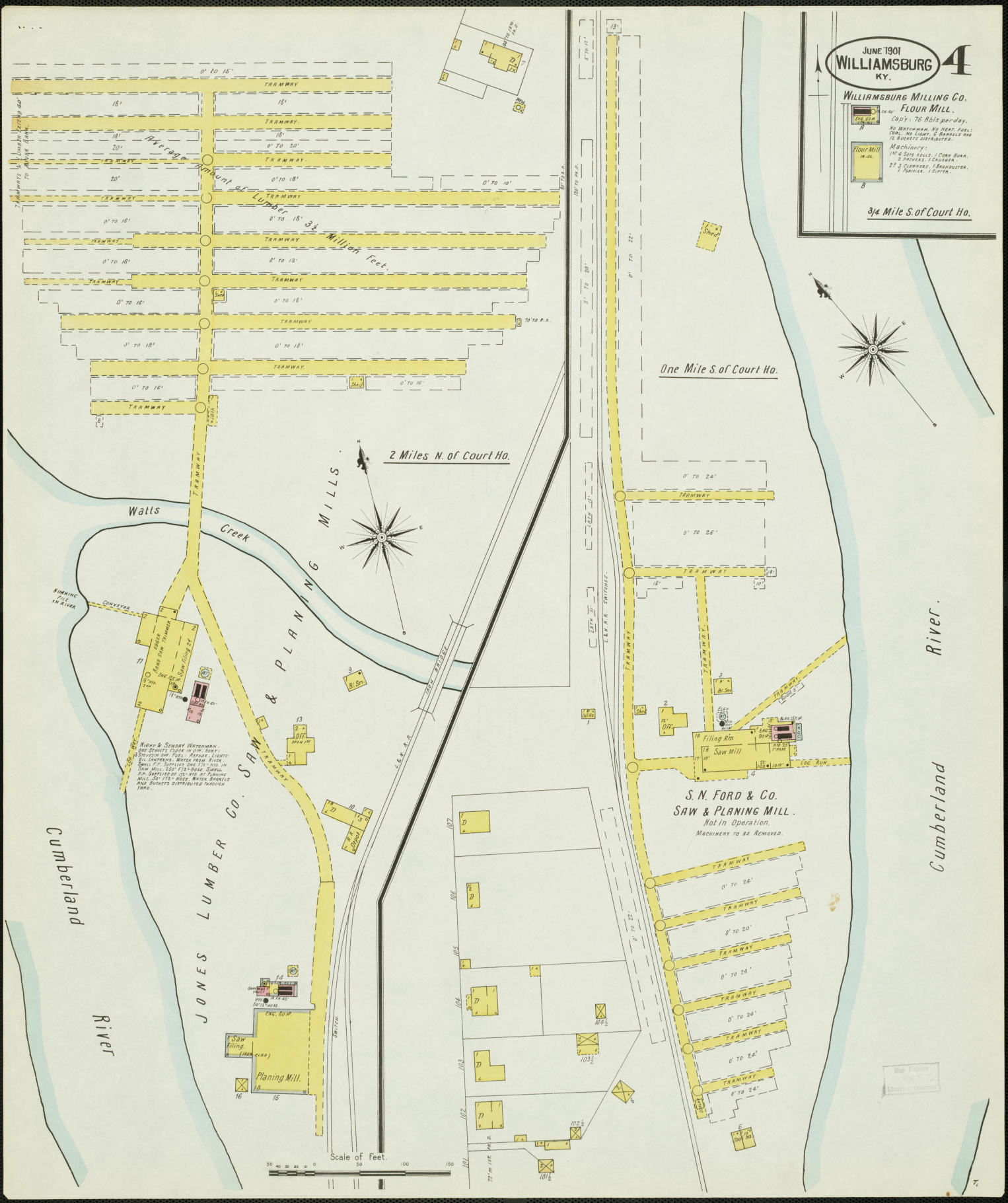


Scale of Feet.  
50 100 150



No exposure

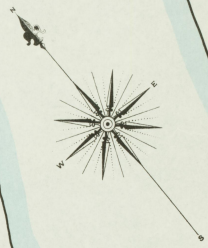




JUNE 1901  
**WILLIAMSBURG** 4  
 KY.

**WILLIAMSBURG MILLING CO.**  
**FLOUR MILL.**  
 CAPY: 76 Bbls per day.  
 NO WATERMAN, NO HEAT, FULL  
 CYCLE, NO LOGS, 5 BRANNS &  
 15 BUCKETS DISTRIBUTED.  
 Machinery:  
 14-5 SIZES ROLL, 1 CORN BURN,  
 5 PACHES, 1 CRUSHER,  
 2 1/2 CLEANERS, 1 BRANNSUTTER,  
 1 PULVER, 1 SIFTER.

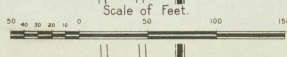
3/4 Mile S. of Court Ho.



One Mile S. of Court Ho.

2 Miles N. of Court Ho.

**S. N. FORD & Co.**  
**SAW & PLANING MILL.**  
 Not in Operation.  
 Machinery to be Removed.



Watts Creek  
 Jones Lumber Co. Saw & Planing Mills  
 Planing Mill  
 Saw Mill  
 S. N. Ford & Co. Saw & Planing Mill

Cumberland River

Cumberland River