

# FRONTIER NURSING SERVICE QUARTERLY BULLETIN

VOLUME 54

SPRING, 1979

NUMBER 4



US ISSN 0016-2116



**Cover:** Family Nurse-Midwife Arlene Bowling, the first Leslie County graduate of the Frontier School of Midwifery and Family Nursing, with a young patient.

**Above:** Arlene with her parents, Mr. and Mrs. Roscoe Day

Photos by Gabrielle Beasley

---

FRONTIER NURSING SERVICE QUARTERLY BULLETIN  
SECD 835-740

Published at the end of each quarter by the Frontier Nursing Service, Inc.  
Wendover, Kentucky 41775

Subscription Price \$2.00 a Year

Editor's Office, Wendover, Kentucky 41775

---

VOLUME 54

SPRING, 1979

NUMBER 4

Second-class postage paid at Wendover, Ky. 41775 and at additional mailing offices  
Send Form 3579 to Frontier Nursing Service, Wendover, Ky. 41775

Copyright 1979, Frontier Nursing Service, Inc.

## CONTENTS

ARTICLE	AUTHOR	PAGE
Beyond the Mountains		37
Demonstration Garden	<i>Rufus Fugate</i>	25
Graduation		9
Health Careers Program Leslie County High School	<i>Robin Holbrook</i>	3
In Memoriam		16
Leslie County Clean-Up		33
Leslie County Rescue Authority		14
Leslie County Sports	<i>Keller McDonald</i>	29
Memorial Gifts		17
Once Over Lightly	<i>W. B. R. Beasley, M. D.</i>	2
Our Clinic	<i>Mary Alice Murray</i>	27
Progress—the Community Health Center	<i>Georgia Ledford</i>	15
The Board of Governors: Leslie County Members		22
The FNS Advisory Committee		6
The Hayes Lewis School Greenhouse		32
The Leslie County Humane Society	<i>Anne Cundle</i>	35
The Leslie County Volunteer Fire Department		19
The Power of Youth	<i>Ron Hart</i>	31
Staff Opportunities		Inside Back Cover

## ONCE OVER LIGHTLY

Emphasis in the Bulletins is generally on the services which FNS provides, and various aspects of patient care. There is a constant overtone of training of nurses as practitioners and midwives, and, although there are frequent allusions to the community to whom we owe so much, very seldom do we include reports of significant community activities. This issue is by no means complete in its coverage nor could we truthfully say that the vignettes presented are the "top ten" but they are very representative of the way life is lived. They are meant as a tribute to our friends and neighbors without whom the Frontier Nursing Service has no meaning, and we shall hope to add to this tribute in the future.

Three articles describe aspects of activities in the county education system: the interest in gardening is emphasized in the account of the **Hayes Lewis School Greenhouse**; the activities of the high school students exploring **Health Careers** is written by one of the explorers; the importance of **Leslie County Sports** and some of the team accomplishments are reviewed. The participation of the community in the management of Frontier Nursing Service is indicated in the report of the **Advisory Committee**, in the notes identifying our county members of the Board of Governors, and in the reports from two of the district center committees. Areas of voluntary activities — which mean a lot of hard work — are described in the articles on the **Humane Society**, the **Volunteer Fire Department**, the **County Clean-up** and the **Rescue Authority**.

This is a neighborhood of strong personalities who have broad concerns which they pursue with vigor.

Rogus Beasley

W. B. R. Beasley, M. D.

## HEALTH CAREERS PROGRAM LESLIE COUNTY HIGH SCHOOL

By Robin Holbrook, Health Careers Student

Almost everyone involved with Mary Breckinridge Hospital knows something about the Leslie County Vocational School Health Careers program. The students, dressed in bright yellow uniforms, can be found in most of the departments of the hospital on their "working days". A student may find herself observing in X-ray, helping with a patient in Physical Therapy, taking vital signs in outpatient clinic or on Med-Surg, or spoiling babies in the newborn nursery.

What most people are not aware of, however, is that the Health Careers students are involved with many extra-curricular civic and volunteer activities. Some of these activities are hospital-centered; others directly involve the community.

When school is not in session, chances are you'll find a Health Careers student doing volunteer work. In the 1977-78 class, eighteen students did over 2,000 hours of volunteer work in the hospital. Although most of that work was done on the Med-Surg



Health Careers Student Robin Holbrook

floor, students are now branching out and working in other departments during their spare time. Pediatric clinic, Respiratory Therapy, and Physical Therapy are rapidly becoming favorites of the students.

In September, 1977, the class participated in a hospital disaster drill. The drill involved a mock bus accident. The students, faking injuries, were rushed to the hospital emergency room via ambulance. In the emergency room their "injuries" were treated and they were routed to the cafeteria for refreshments. The students enjoyed participating in the drill and learning how emergencies are handled.

Another hospital-centered activity in which the students participated was the ENT screening and surgery clinic. For three days, the students worked during school hours and after school transporting patients to and from the operating room and entertaining young patients.

On December 1, 1978, a group of Family Nursing students from FNS held a health fair at the high school. The Health Careers class presented a medical equipment display. The students also measured height, weight, and blood pressure of some of their fellow high school students. The Health Careers' display drew the attention of both students and faculty, and received publicity in the local newspapers.

The Leslie County Health Department sponsors several blood drawings each year. The Health Careers students recruit donors at the high school. Fifteen students who were recruited by the Health Careers class donated blood during the March drawing. The Health Careers students also take vital signs and provide refreshments for the donors.

This year, the class collected money for the Heart Fund. The students also conduct blood pressure screenings which involve their teachers as well as fellow students. Those with abnormal readings are advised to see their doctor or nurse practitioner.

The Health Careers class is actively involved with Hope House, the school for mentally and physically handicapped adults. Each student rotates through Hope House at some point during the course. The class also sponsors an Easter egg hunt and party for Hope House.

On April 11, 1979, twenty-five eighth graders from W. B. Muncy Elementary School visited the Health Careers classroom

for a Health Careers field day. The eighth graders learned to identify certain pieces of medical equipment and how to do blood and urine tests. They were also given the chance to dissect pigs as a project in comparative anatomy. The eighth graders seemed to enjoy the project as much as the Health Careers students enjoyed teaching it.

The Health Careers students, along with other vocational school students, have participated in two clean-up campaigns. One of these, held in March, was a school clean-up. The other clean-up, held in April, was part of a countywide effort organized by Dr. Brad Gascoigne, the local Optomist Club and Merchants Association.

A member of the class also serves on the FNS Advisory Committee, as a representative of the Health Careers program and the Leslie County High School.

The object of these activities is to involve students with the community. It also helps the students to develop leadership qualities essential to a successful career in the medical field.

---

## FNS RADO SPOT #20

### Vomiting

NARRATOR: Does your stomach ever feel like this?

SOUND: Dingfutzer

NARRATOR: Well, sometimes children have the same problem. One solution the body resorts to is throwing up. Vomiting in children is not always serious, but it can be a sign of something that is serious. Maybe it's poisoning with a plant, medicine, or bad food. Whatever the reason, if your child has been vomiting for more than 12 hours, or more than six times, or if there is any blood in the vomit, these could be signs that something is more serious than just a stomach ache. If you see these or other signs you are not sure of, call your physician or family nurse.

## THE FNS ADVISORY COMMITTEE

The Advisory Committee is made up of elected representatives from each of the district committees, plus members at large. It is an official committee, authorized by the Board of Governors, and acts both as a liaison between the institution and the community and as advisors to administration relating to service and programs.



Advisory Chairman James Mosley with Mrs. Walter Green of the Wooton Committee



In accepting this responsibility, the members were very courageous because we had not had this type of committee before. Members have helped define the functions of the committee and, in addition to regular monthly meetings, have had emergency meetings to consider budget problems and special meetings to consider school health programs. They have contributed unstintingly of their time and energy and are deserving of enormous thanks from staff and Governors.

As an illustration of one of their new functions, and willingness to assume increased responsibility, the Advisory Committee has agreed to be the responsible local board in administering a federal grant in support of a special school health program, which they were asked to do on behalf of the Board of Governors should this grant be awarded.



Members of the Advisory Committee at a meeting in the Mary Breckinridge Hospital Library

Members of the Advisory Committee, serving under the Chairman, James Mosley, are:

*Representing the Community Health Center at Big Creek:* Georgia Ledford, Al Marcum, Logan Bowling, Ernest Bowling.

*Representing the Beech Fork Center:* Doug Couch, Louise Howard, Diane Wilson.

*Representing the Wooton Clinic:* Mary Alice Murray, Bill Pollard, Judy Melton, Judy Asher.

*Representing the Oneida Clinic:* Fronia Smith, Barkley Moore, Alden Gay.

*Representing the Leslie County High School:* Robin Holbrook.

*At-Large Members:* Jean Elam, Betty Huff, Faye Farmer, Lottie Roberts, Betty Roberts, Howard Napier, Nancy Dammann, Jim Hayes, Morris Morgan.

---

## FNS RADIO SPOT #36

### Hospital Quiz #4

#### MUSIC INTRODUCTION

NARRATOR: This is the hospital quiz, brought to you as a public service by the Frontier Nursing Service. The question is:

Whenever you go into the clinic or hospital, four recordings are taken of your body functions. These are called vital signs. One of the four vital signs is respiration. Respiration is:

- A. A way of seeing how much you sweat
- B. The number of times your heart beats per minute
- C. The same thing as blood pressure
- D. ONE COMPLETE CYCLE OF BREATHING IN AND BREATHING OUT.

SOUND: (Pause) Buzzer

NARRATOR: The correct answer is D. Respiration is one complete cycle of breathing in and breathing out.

## GRADUATION



Susan Keilman, Paulette Hunt, Arlene Bowling, Susan Willis  
Sr. Roberta Naegele

Doris Wall

Traditionally, students in the Frontier School of Midwifery and Family Nursing have had the privilege of choosing the kind of graduation they wanted to have and of planning the service. The April 1979 Class requested the pleasure of our company at the First Baptist Church in Hyden, Kentucky, on the evening of Friday, April 27.

This most recent graduating class was just a bit special. Of the six graduates, three were born in Kentucky and one of the graduates, Arlene Day Bowling, was the first Leslie County nurse to enter the School. The other two Kentuckians were Susan Willis, whose parents live in Louisville, and Doris Wall, whose family live in Stanford. Paulette Hunt from Oklahoma, Sue Keilman from Washington State, and Sister Roberta Naegele, who has worked in Kentucky for some years, completed the class roll.

AT THE RECEPTION FOR THE GRADUATES  
GIVEN BY DR. AND MRS. GENE BOWLING . . .



Sr. Roberta, Susan and Arlene  
Cut the "Nurse Cake" . . .



Watched by hungry guests



Bernadette Hart dances an Irish Jig . . .

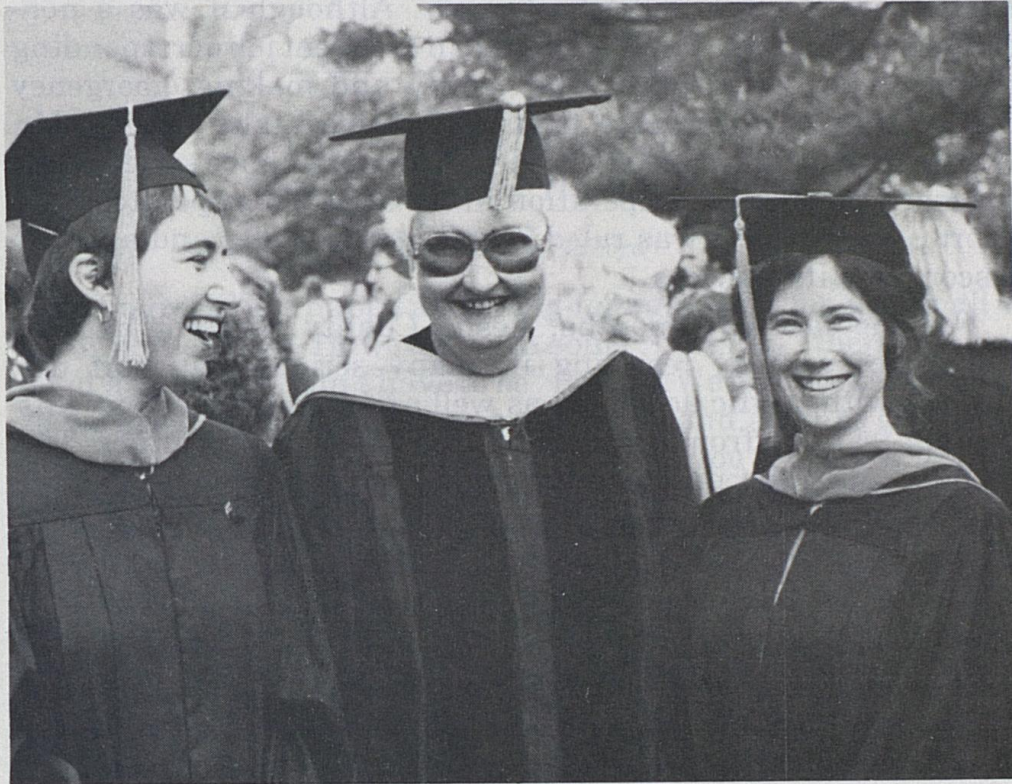


To the music of Coleman Willis, Paul Wooton and Mike Hildebrand

Paulette Hunt welcomed the guests, introduced her classmates, and spoke briefly of the education program the students had just completed, emphasizing the appreciation of the students for their patients, a number of whom were in the audience that filled the church. Two faculty members, Cynthia Kaufman and Sister Dorothy Dalton, had been asked by the students to say a few words and present the diplomas. The beautiful flowers that decorated the sanctuary and a special program of music presented by Paul Kelly at the piano and by violinists Coleman Willis and Mike Hildebrand, playing one of Bartok's Roumanian Dances, Beethoven's "Ode to Joy" and the first movement of his Sonata in E Flat, and the beginning of a Bach Sonata, added much to this joyous occasion.

Following the ceremony, the graduate family nurse-midwives were guests of honor at a reception at the home of Arlene's parents-in-law, Dr. and Mrs. Gene D. Bowling, Sr., of Hyden. It was a lovely party with more music, dancing and a delicious buffet supper.

Some weeks later, and some miles away, another graduation of importance to FNS took place when Cathy Carr and Ann Shaw received master's degrees from the University of Kentucky. Cathy and Ann had taken Family Nursing IA and IB in the Frontier School of Midwifery and Family Nursing and had then gone to the University for certain core courses, such as statistics and research and an extra clinical, leading to the master's degree. When Dr. Marion McKenna, Dean of the College of Nursing, introduced the graduating class, she prefaced her introduction by pointing out that this class included two women who had had the major portion of their master's level training at FNS in this affiliated program, and said that Ann and Cathy were the first products of this dual training. Dean McKenna expressed the pleasure of the University at this affiliation and we echo her enthusiasm. Cathy and Ann are continuing their midwifery education at FNS.



Cathy Carr, Dr. Marion McKenna, Ann Shaw  
at the University of Kentucky Commencement

## LESLIE COUNTY RESCUE AUTHORITY

For many years Mr. Dwayne Walker operated the Walker Ambulance Service in Leslie County. Although it was a non-conforming service, Mr. Walker did an excellent job of responding to emergency calls within the county and making emergency transports to tertiary care facilities outside Leslie County. Mr. Walker discontinued his service when an ambulance service from Letcher County began operation in the area. This operated for a short period until it was ruled illegal in the county and asked to discontinue its services.

For the last two months, Leslie County has not had an ambulance service, resulting in many serious transport difficulties with traffic accidents as well as for emergency patients needing transfer from the hospital to tertiary care facilities. The hospital and other people in the county have improvised to meet these emergency situations; for example, the hospital has had to use unequipped vans or station wagons to make required transfers. Ambulance services in Perry and Clay Counties have been reluctant to serve Leslie County patients, even in life and death situations, unless the people could pay cash at the time.

There is now a solution to our problem. The Leslie County Fiscal Court has filed a Certificate of Need with the Department of Human Resources to operate a conforming service called the Leslie County Rescue Authority. The Rescue Authority operation will be conducted out of the Leslie County Emergency Operation Center which is now being constructed in Hyden. It is hoped that an emergency medical technician (EMT) class will be started in June 1979, and many of the personnel connected with the Rescue Authority will be trained as EMTs. This staff will have the use of two conforming emergency vehicles to be used in transporting emergency cases to the hospital and on to tertiary care facilities as necessary. The rescue service will function primarily in Leslie County and is expected to make approximately 1,460 runs per year. It is anticipated that the Rescue Authority will be in full operation by September 1979.

The Frontier Nursing Service is pleased that the Leslie County Fiscal Court has submitted the Certificate of Need to operate the



Leslie County Rescue Authority and has decided to accept this great responsibility. The Frontier Nursing Service will be glad to provide support to the Leslie County Rescue Authority because the service is so desperately needed within the county.

---

## PROGRESS

### The Community Health Center

By Georgia Ledford

“Progress” is a happy and going-forward word for almost all of us, or it should be. However, with some “progress” there can be a bit of a “I wish it didn’t have to be” feeling. We want to keep things as we are used to them, to keep places — and all that goes with those places — the same. Probably most of you readers will know that this is in reference to the closing of the Flat Creek Center and, in the near future, the closing of the Red Bird and Bob Fork (Betty Lester Clinic) Centers. I, for one, can identify with Flat Creek as I grew up with it and this would be the feeling, I’m sure, of most everyone at the other centers. The feeling of wanting to keep these lovely places as they were is a strong factor but you gradually and painfully begin to think positively and push toward “progress” — in this case the birth and building of a new center. This new center — The Community Health Center at Big Creek — will serve all of our people from the three districts that know this unique and wonderful Service and those that eventually will learn to take advantage of our well-trained nurses.

Now let’s move our thoughts more directly to the progress that has been and is being made. Land has been purchased; blue prints are drawn for remodelling, and adding to the existing building; some funds have been raised; there have been several gifts of money and lots of good cooperation from the community and the committee. This is a joint operation between FNS and the community. Let’s hope we will get this venture under way as soon as possible so as to be able to continue to serve our fellow persons.

We appreciate your help—financial, supportive and prayerful.

## IN MEMORIAM

These friends and members of Frontier Nursing Service Committees have departed this life in the past few months. We wish in this manner to express our sympathy to their families.

MRS. J. ARTHUR BUHR  
Cincinnati, Ohio

MR. GILBERT W. HUMPHREY  
Chagrin Falls, Ohio

MRS. JOHN V. CRACKNELL  
Prides Crossing, Massachusetts

MRS. CLIFFORD B. LULL  
Drexel Hill, Pennsylvania

MRS. CARL H. FORTUNE  
Lexington, Kentucky

MR. A. D. MATTINGLY  
Hyden, Kentucky

MR. RALPH GROOMS  
Louisville, Kentucky

MR. ROGERS C. B. MORTON  
Easton, Maryland

MRS. BAYLOR O. HICKMAN  
Goshen, Kentucky

MRS. JAMES R. PATTERSON  
Cohasset, Massachusetts

MRS. RUSSELL WILSON  
Cincinnati, Ohio

We acknowledge our appreciation and personal gratitude to those friends who have, by including FNS in their wills, made a continuing reaffirmation of interest and belief in the care of mothers and babies and their families by the Frontier Nursing Service. Such legacies are added to the Endowment Fund.

Mrs. Alta Mae Cole, Lexington, Kentucky  
Mrs. Paul B. Crapsey, Rochester, New York  
Mr. Thomas G. Spencer, Rochester, New York

## MEMORIAL GIFTS

We take this means of expressing deep appreciation to our friends who make a supporting contribution to the work of Frontier Nursing Service as a way of showing love and respect for their friends.

**Miss Margo Squibb**

Mr. and Mrs. John P. Hatch

**Mrs. Mary Lela Wade Johnson**

Mrs. F. W. Thiele

**Miss Tenny Donnelly**

Mr. and Mrs. Richard P. Paine

**Mr. Douglas E. Baxter**

The Hodupp Family

**Mr. and Mrs. Joseph D. Burge**

Mrs. Frank R. Myers

**Mrs. Laura Witt**

Dr. and Mrs. W. B. Rogers Beasley  
Miss Betty Lester

**Mr. Ralph Grooms**

Mrs. Maude G. Grooms

**Mrs. John A. Chew**

Mr. James T. Breckinridge  
Mrs. William McKee

**Mrs. Parker Barrington Poe**

Mr. James D. Ireland

**Mrs. Edward Pulling**

Wednesday Sewing Class

**Mrs. Ida V. Goodrich**

Mrs. Norma Parker

**Ms. Helen MacNaughton Christensen**

Miss L. Gertrude Thompson

**Mrs. J. Fred Rippy, Sr.**

Southern Woman's Alliance

**Mrs. James R. Patterson**

Mrs. Arthur Perry, Jr.  
Mr. Alexis I. duPont Bayard  
Mrs. Elizabeth S. Beveridge  
Fitzgerald Charitable Foundation  
Mr. and Mrs. William Kemble  
Mrs. N. Frank Neer, Jr.  
Ms. Gertrude S. Parsons  
Mrs. Vcevold W. Strekalovsky  
Mrs. John D. Strong  
Ms. Ruth L. Tyler  
Mrs. Ruth M. Welton  
Mrs. Robert A. Lawrence  
Mrs. George L. Robb  
Mr. and Mrs. Roger L. Branham  
Mrs. John C. Fisher  
Mrs. John W. Wilder  
Mrs. Nancy D. Crisamore and Family  
Mr. Frank Dellorfano  
Mrs. Olga Dellorfano  
Mr. and Mrs. M. Tilghman Earle  
Mr. and Mrs. John L. Grandin, Jr.  
Mr. and Mrs. Edward M. Guild  
Mr. and Mrs. Bruce N. Holmes  
Mr. and Mrs. John Lee Potter  
Mr. and Mrs. O. Herbert Sherbrooke  
Mrs. Langford Warren  
Mrs. William S. Weedon  
Miss Helen E. Browne  
Mrs. Richard R. Higgins  
Mr. and Mrs. Edwin C. Lincoln, Jr.  
Miss Agnes Lewis  
Mrs. Maurice E. McLoughlin  
Mr. and Mrs. William G. O'Brien  
Mr. and Mrs. Barron Salvador  
Mr. and Mrs. James Brown  
Mr. and Mrs. John Bowen  
Mrs. Josephine C. Mahoney  
Miss Margaret M. Cummings  
Dr. and Mrs. Peter C. Amadio

**Mrs. James R. Patterson, continued**

Mr. and Mrs. Harry S. Hammond, Jr.  
 Ms. Marion Meredith  
 Mrs. Anne B. Burrage  
 Mrs. Grant S. Barker  
 Mrs. Craig O. Sherbrooke  
 Mrs. John E. Dawson

**Mrs. John V. Cracknell**

Mrs. Robert A. Lawrence  
 Mrs. John E. Dawson  
 Mrs. George L. Robb  
 Mrs. Edward L. Bond  
 Mr. S. W. Bridges, Jr.  
 Mr. and Mrs. George N. Hurd, Jr.  
 Mr. Nelson E. Kravetz and Family  
 Mr. and Mrs. Thomas L. P. O'Donnell  
 Mr. and Mrs. Thomas T. Baldwin  
 Mr. and Mrs. Hildreth M. Clark  
 Dedham Country and Polo Club  
 Mrs. John G. Dobson  
 Mr. and Mrs. Joseph V. Fry  
 Mr. and Mrs. Lawrence P. Hills  
 Mr. and Mrs. R. Willis Leith, Jr.  
 Mr. and Mrs. V. I. Pavloglou  
 Mrs. George H. Pendergast  
 Mrs. Elizabeth M. Place  
 Mr. and Mrs. R. E. Pope  
 Recreation Department of  
 Wrentham State School  
 Mr. and Mrs. Horace A. Secrist  
 Mrs. Vcevolod Strekalovsky  
 Mr. and Mrs. W. Craig Walker

Mrs. Lyon Weyburn  
 Ms. Jane C. Wharrey  
 Miss Helen E. Browne  
 Mrs. Richard R. Higgins  
 Mrs. Joan M. Raeside  
 Ms. Rosemary A. Bonanno  
 Nurse Practitioner Program of  
 Northeastern University  
 Mr. and Mrs. Robert H. Welsh  
 Mrs. William M. Breed, Jr.  
 Rev. and Mrs. Russell Dewart  
 Mr. and Mrs. David Nimick  
 Mrs. Nancy C. Wolfram  
 Mr. G. L. H. Bird  
 Mrs. Isobel Fleming  
 Patricia L. Condon, R.N., P.N.P.  
 Mr. and Mrs. Roger L. Branham  
 Janice C. Levy, M. D.  
 Ms. Anne C. Hughes  
 Ms. Susan M. Peiffer  
 Mrs. Susan H. McVeigh  
 Mrs. Grant S. Barker  
 Mrs. W. Robert Mason, Jr.  
 Mr. and Mrs. E. R. Boase  
 Mr. and Mrs. Benjamin Fisher  
 Mrs. Robert C. Terry  
 Mrs. Royal Willis Leith  
 Mrs. Herbert C. Fowler  
 Mrs. Samuel G. King  
 Mrs. Charles Wood  
 Mrs. Alec G. Home

---

A Charitable Remainder Unitrust is a method of making a future gift to the donor's favorite charity but at the same time providing income from the principal amount for the donor during his lifetime, *and also providing a current charitable income tax deduction* to the donor. Frontier Nursing Service is grateful to have been named as the beneficiary of a Unitrust established by the Rev. Mr. and Mrs. William D. Henderson of Roanoke, Virginia. The Hendersons have made this gift in response to the training program and operational needs of the Service.

## THE LESLIE COUNTY VOLUNTEER FIRE DEPARTMENT



Volunteers Display New Uniforms

**Standing:** Garrett Lewis, Ralph Vanover, Phil Reppond, Mike Dotson, Bill Pennington, Harold Kemper, Jr., Peter Baker.

**Seated:** Bill Weaver, Jean Isaacs, Gabrielle Beasley, Rufus Fugate, Doug Pack.

The Leslie County Volunteer Fire Department was organized some three years ago by a small group of men and women who recognized the acute need and were totally committed to fulfilling that need in Leslie County. For most of the first two years the only thing that kept them going was faith, hope and a small amount of charity! They had no fire truck — almost no equipment of any kind. Nevertheless, under the leadership of Chief Harold Kemper, Sr., interest was sustained and training continued through lectures offered by the Hazard Vocational School and occasional demonstrations with equipment belonging to others.

Then came the great day when a second hand fire truck, with 500 gallon capacity and the capability of pumping directly from a nearby creek or river, was acquired. Mr. Kemper bought the truck himself — with his own money — another example of faith. Eventually he could be repaid from donations received, from a

raffle, from a benefit performance given by the Coal Country Grass. Each volunteer bought his or her own hat and businesses in the community contributed the coat, pants and boots to complete the uniform. Some equipment for fighting forest and brush fires was contributed by the Forestry Service who also provided instruction in controlling such blazes. Additional training was provided at a two day fire school in London, Kentucky, and by Chief Kemper who passed on to his department the information and skills he had learned in the many workshops he attended.

Now the department has two trucks, one in Hyden where Co-Captains Harvey Chappell and L. B. Stacy assist Chief Kemper, and one in Wooton where six members of the department work under the direction of Captain Ralph Vanover.

Chief Kemper has added to his duties the direction of the Disaster and Emergency Services for the county and the Volunteer Fire Department is now operating as the Leslie County Fire and Rescue Squad. Six members of the squad have already been certified in CPR and the unit has been recognized by the



State Fire Marshal's Office as an official Volunteer Fire Department.

Plans for the future include the formation of a Junior Fire Department at the Leslie County High School to enable interested juniors and seniors to receive basic fire and rescue training in preparation for the day when these young people are of legal age to participate in all of the activities of the fire and rescue squad. Also badly needed is a siren to alert volunteers when a fire or emergency occurs.

Many, many thousands of dollars have been saved property owners in Leslie County since the Volunteer Fire Department was organized. All of us who live in the county owe an enormous debt of gratitude to these dedicated men and women.

---

### FNS RADIO SPOT #30

#### Food Quiz #3

MUSIC: Louis Armstrong Jazz

NARRATOR: And now, time for the Food Quiz, brought to you as a public service by the Frontier Nursing Service. The question:

What is cholesterol?

- A. A substance used to clot blood
- B. A fat-like substance found in every cell of the body and in food
- C. A fat-like substance found in some cells of the body and in food
- D. An enzyme that helps break down fat and sugar

SOUND: Buzzer

NARRATOR: The correct answer is B, cholesterol is a fat-like substance found in food and in every cell of the body. However, a high cholesterol level in the body can help develop fatty deposits in the bloodstream, which eventually may lead to a heart attack or a stroke. Cholesterol is found in animal foods, especially in organ meats like liver, kidneys, and in egg yolk.

## THE BOARD OF GOVERNORS — LESLIE COUNTY MEMBERS

As this Bulletin features a number of Leslie County projects and events, it is appropriate that we introduce to you the Leslie County members of the Frontier Nursing Service Board of Governors.

Eddie J. Moore, President of the Moore Lumber Company in Hyden, was elected a Governor in 1970. He is chairman of the Buildings and Grounds Committee and a member of the Patient Care and Education Committee. His wife, Cloma, was the first president of the Mary Breckinridge Hospital Auxiliary. The Moores have three children, a daughter and two sons, both in business with their father.

W. F. (Fred) Brashear, Executive Vice President of the Hyden Citizens Bank, was elected to the Board in 1971, and serves as the Assistant Treasurer of FNS as well as a member of the Board's Executive, Finance, Retirement and Professional Standards Committees. Fred and Mary Kay, who teaches remedial reading in the Leslie County School system, have two sons, (FNS babies) one a banker and one a 1979 graduate of Centre College.

Edward A. Mattingly, Manager of the Leslie County Telephone Company, has the special distinction among Governors of being an FNS baby himself. He and his wife, Daisy, have four children — twin daughters who live in Lexington, a son, also a '79 graduate of Centre, and a younger daughter who attends the Leslie County High School. Eddie was elected to the Board of Governors in 1976 and serves on its Budget, Personnel and Development Committees.

Our fourth Leslie County Governor is James Mosley, Hyden businessman and member of the Leslie County Board of Education. As Chairman of the FNS Advisory Committee, he has represented that Committee on the Board of Governors during the past year. James and his wife, Mary, have three children, a married son and daughter and a younger daughter who is a junior at the Leslie County High School.

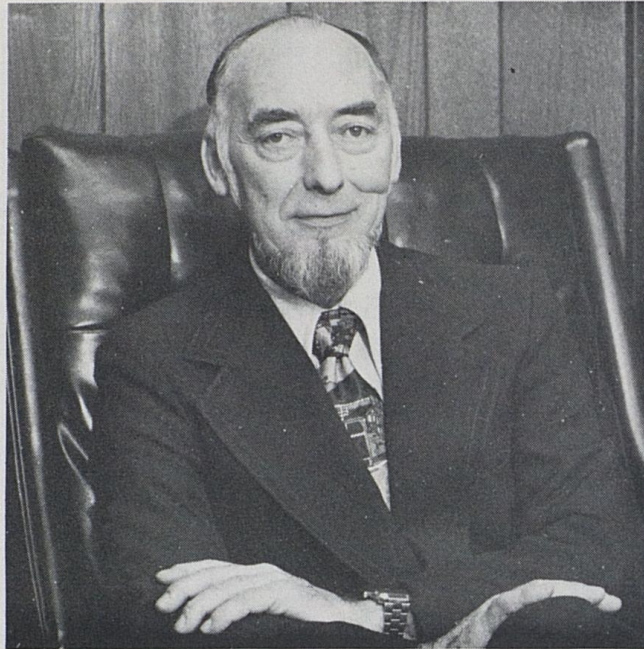




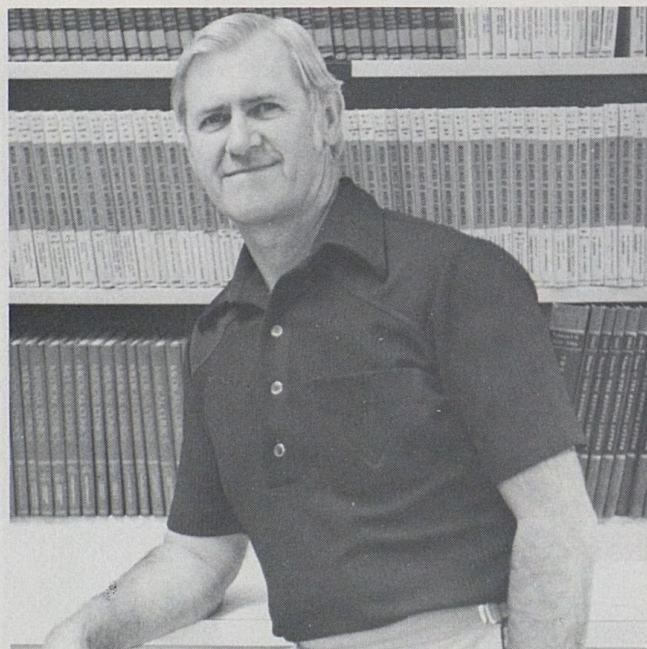
Eddie J. Moore



Fred Brashear



Edward A. Mattingly



James Mosley

## DEMONSTRATION GARDEN

By Rufus Fugate

The Frontier Nursing Service and the Leslie County Cooperative Extension Service are sponsoring a "Demonstration Garden" this year. FNS is providing the land at the mouth of Hurricane Creek and the Extension Staff are planning, planting and cultivating the vegetables.

The objective of the Extension Service is to show the different varieties of vegetables available for planting and also different cultural practices that can be employed to improve vegetable production. Vegetable varieties were selected on the basis of disease resistance, productivity and quality. Cultural practices to be used are those that will reduce work demands and also contribute to fruit and vegetable quality.

A potato variety trials planting has nine different varieties in it. Some of these varieties are for chipping potatoes as well as the table varieties. In tomatoes there are eight varieties with special emphasis on those recommended by the University of Kentucky. The Ramapo, Jet Star, Better Boy and Floramerica are



Russell Kennifeck, County Extension Agent for 4-H

recommended for their resistance to blight and for productivity and tomato quality. The tomatoes are being grown over plastic, in cages, on stakes and some are being pruned and others left unpruned.

There are seven different varieties of sweet corn also in plastic, six different sweet potatoes, two different bell peppers and five different beans. Okra, egg plant, zucchini and summer squash as well as pumpkin, cushaw and onions are also being grown.

The 4-H agent is growing 4-H garden project plantings according to the 4-H project instructions. The Extension Home Economist has a flower garden display. Altogether, this is a total staff effort not only involving staff members but their spouses as well. The neighboring county's agriculture agent has also helped with the planting and cultivating.

The extra garden space not used by Extension was marked off in plots and offered to FNS staff members for home gardens. At this writing approximately six people from FNS are growing vegetables near the demonstration garden.

On July 14th a field day is set to which the public will be invited. At the event Dr. C. R. Roberts and Dr. David Hensley from the University of Kentucky College of Agriculture Horticulture Department will be on hand along with other Extension people to discuss the varieties and cultural practices. Also, the Extension Service Home Economist from the Quicksand Area will be on hand to cook some of the vegetables for sampling. The UK Mobile Education Unit will be used for display and cooking facilities.

The best quality food is home produced food. With high inflation and the energy shortage, a garden can be a step in this battle and an approach all can enjoy. With the Extension Service and the Frontier Nursing Service cooperating in this effort it should prove to be a worthy project for the whole county and, hopefully, the area.

## OUR CLINIC

By Mary Alice Murray

We are proud of our Wooton FNS Clinic.

We are proud because we were rated "A" by the inspectors.

We are proud because of our nurses and the quality of medical care we receive.

We are proud because of the loving concern that is expressed from the time we come in the door and greet friends until we have paid our money or arranged for credit at the desk and said good-bye.

We are proud because we are getting a new dentist. Yes, he's new. Fresh out of Dental School and has just passed his Kentucky dental exams.

We are proud because we have some say in how the clinic is run. Our advice is listened to and taken seriously.

Our Advisory Committee is composed of the nurses, interested people from the community, and patients. Dr. Wasson usually attends our meetings, and sometimes Ron Hart, Dr. Beasley or other members of the FNS staff. We work together for the growth of the clinic and to help provide necessary equipment that is not part of the budget.

When we suggested that patient gowns be made of attractive, comfortable material, and of appropriate size to the patient, nurses and doctors were delighted to adapt to our wishes and now we proudly show off to visitors the gowns color coded by size, and the childrens' gowns with miniature ducks walking all over them.

We have raised money for the clinic by having several benefits: Two music shows by Coal Country Grass and John Howard's group, a spaghetti dinner, and we are planning a yard-auction sale. Dr. Wasson contributes infant sweaters which she knits in her "spare" time for us to sell and Susan Swartz has made some hand-tooled leather barrettes. The FNS Auxiliary gave us some money also.

We have bought gowns, sheets, washer and dryer, lamps, an otoscope and other unpronounceable medical equipment. We have made a bulletin board, attractive signs, and contributed toys and child size chairs for a "childrens' corner".

The childrens' corner always makes a big hit. The most

favorite toys are the little music box "radios" that play "It's A Small World" and "Whistle A Happy Tune" almost constantly when children are present — and sometimes when they aren't.

We appreciate having the clinic in our community. The clinic stays pretty busy and sometimes when we have to wait a long time to see the nurse or doctor we get impatient, but we are glad it is here.

Sometimes when things don't go just right, we complain, but we are glad it's here.

Sometimes when the doctor has had to cancel a day here, we get disgruntled at changing appointments, but we are glad the clinic is here.

We can complain about it all we want to. We'd better not catch anyone else putting "Our Clinic" down!

When all is said, the clinic is not the money, the building, or the equipment, however close, well-equipped or attractive. The clinic is people. Nurses, Doctors, Secretaries, Aides, Family Nurses in training, and Janitors, caring, loving, and healing.

We will be glad when Sharon Koser, our first FNS nurse, is well and able to return to work. We are proud and pleased with the way Carol Read has ministered to us. Judy Asher and Juanetta Morgan keep the place running smoothly, and Marilyn Joseph keeps us clean.

To paraphrase Hebrews 11: What more shall I say? Time would fail me to tell of Dr. Wasson, and Dr. Gascoigne, of Wanda Wooton, Phil Reppond, Rosemary Pittman, June Rand, Arlene Bowling, Susan Willis, Kathy Smith, Susan Hull, and the many others who have given their time and talents to serve us.

One day when I was taking a van load of children home from the church, we met Sharon Koser and Juanetta Morgan in their jeep on one of the many narrow spots of Hurricane Creek. The children all but jumped out of the van to wave and call to them. As we drove on, one of the children said, "That's Sharon! She's my most favorite Doctor I ever had!"

That's the way we feel about "Our Clinic".

## LESLIE COUNTY SPORTS

By Keller McDonald

Sports have long been among the highlighted activities in Leslie County schools. Communities rally strong behind their local grade athletic programs, especially when county tournament time nears. Businesses and parents are staunch supporters of the county high school teams and when a team develops the prospect of a successful season, the whole county flows as a tide to back the hopefuls.

For many athletes and their families participation in sports demands some major schedule adjustments. A high school student living up Cutshin or Middle Fork may awaken at 5:30 to catch the morning bus run, then stay after school for practice. At 6:00 p.m. a teammate, neighbor or parent may ferry him (or her) home in time for supper at 7:30. Winter sports practice usually goes on through snow or hail since the district playoffs aren't postponed even when bad weather closes schools for three or four weeks in mid-season.

Some elementary schools schedule football games in Breathitt and Laurel counties, a two hour drive. The girls and boys basketball programs pack the gyms, and softball is so popular in the spring that vacant playing fields are hard to find. For the past three years the high school has sponsored a track meet for the grade schools, held on a school day. The event draws kids from all over the county and has done wonders to introduce them to a previously unknown sport.

At the high school, athletic teams involve about 160 of the 850 students. Cheerleaders and pep band members add another 50 supporters. A student council committee, lead by Paul Coots, Steve Asher and Diane Lewis, has sponsored an intramural program involving 80 students and faculty playing on boys and girls teams in three sports. This year the football team coached by Floyd Hines won 8 of their 11 games, including a victory over Hazard High School which had never previously — in decades of games — lost to the LCHS varsity. The boys basketball and baseball teams had strong seasons working with the talents of young players who will return next year.

The events which seemed to heat up all of the county and melt

away the late winter cold were provided by the girls "Lady Eagles" basketball team. Steady followers of the team expected an excellent year, and the girls pleased them by winning their fourth District Championship in a row. Interest built as the team went to the regional playoffs. Signs began to appear on store front windows and conversations on street corners (and hospital corridors) centered on the girls' chance of becoming the first Leslie County team ever to play in a state tournament. The girls won the regional crown, and went to the state tournament at Eastern Kentucky University in Richmond, as did 1,500 supporters (over 10% of the population) from the county! Coach Wendell Wilson can be proud of Nancy Hornsby and Pam Valentine who will attend college next year on basketball scholarships.

Track, a fledgling sport to the area, made great progress this spring. The track teams qualified two boys (George Morgan and Robin Farler) and two girls (Lisa Sizemore and Edna Callahan) to represent southeastern Kentucky in the state championship track meet held in Lexington. Tracksters now practice on the school's playing fields and run the Wendover, Rockhouse and Coon Creek roads in their spare time, but plans are being made to add a metric track to the school's facilities. Not long ago there were few recreational runners in the area, a pattern which is changing. In May the track team sponsored a "jog-a-thon" fund raising project, in which 120 people volunteered to run miles for donations. Track team members Lynn Horton and Jeff Griffith ran 20 miles each. The new interest in running may soon spawn one of the areas few cross-country teams.

The opening of the new county recreational center, next to the high school, will create opportunities to begin tennis and swimming teams. The value of the sports programs to the students is undeniable: they offer an avenue for self-improvement and self-expression, they help provide individuals and schools goals to strive toward, and they create a focal point for county activity.

FNS is involved in school athletics, too. Besides providing professional health care, many of the staff get to know the athletes personally and make a special point of watching the teams play. Dr. Brad Gascoigne and Jim Click, L.P.T., have volunteered their free time for two years as consultants to the football team on injury prevention and treatment. Several athletes' parents (for instance Nancy's mother, Nannie Hornsby,



and George's mother, Blossom Morgan) work for FNS and keep everyone informed as to the teams progress. Just ask the FNS folks who drive by the carload to watch basketball, or who faithfully buy football season tickets, or who ran five miles in the jog-a-thon — Leslie County supports sports!

---

### **THE POWER OF YOUTH: Hope of the Frontier Nursing Service Future**

By Ron Hart

The proposed Community Health Center got a real shot in the arm when a small group of teenagers, most being the grandchildren of Rube Estep, spontaneously decided that they wanted to support their new center.

Junior Roberts, DeAnna Smallwood and Betty Black organized a Disco Dance to raise funds for the new facility.

They contracted a well known disc jockey, "J. D.—The D. J." from Richmond, rented and decorated a large hall, the "Boone Boy Factory", in Manchester, and collected enough voluntary donations to pay for the expenses. Refreshments were donated by the Pepsi-Cola, Coca-Cola and Tom's Potato Chip Companies. Together with other Estep grandchildren, Deidre Kay Estep, Lonzie Wadena Estep, Thresa Ann Roberts, Terry Lynn Roberts and Scott Douglas Roberts—they ran the entire dance. Rube, my wife, Bernadette, and I were there to encourage and pitch in where needed.

The dance brought over 300 people and netted the young adults \$1010.00 for the new center. They are designating the money to be set up in a fund for necessary equipment as determined by the medical staff of the center.

Due to the success of the dance and requests by local teenagers, another is being planned for the near future.

## THE HAYES LEWIS SCHOOL GREENHOUSE



A most interesting and worthwhile project is taking place at the Hayes Lewis Elementary School in Leslie County. A large greenhouse has been built on the school grounds and the principal, Mr. Glen Hendrix, and his teachers assist the students in raising all sorts of flowers and vegetables as a creative science class project. The students are growing only those varieties of plants which are recommended by the University of Kentucky Extension Service as blight resistant and otherwise suitable for this area. The money earned from the sale of plants will go toward the purchase of seeds for next year's crop. Thus these young students learn not only how to grow and care for plants but also the practical economics of horticulture.

## LESLIE COUNTY CLEAN-UP

Leslie County will have a solid waste disposal system in full operation by the end of April. The Leslie County Development Association saw the need to educate the public concerning the use of the system.

A committee was appointed to develop an informational pamphlet to give to all the school students. These were distributed prior to placement of the dumpsters over the county, hopeful so that they would be properly used and cared for.

With so much litter along our roads, a concern developed for the health and safety of our people. With the beauty of spring bursting out all over in the fresh green of new leaves, the profusion of Redbud and Dogwood blossoms, the litter and trash were a distraction. A clean-up campaign was definitely needed.



Dr. Brad Gascoigne of FNS felt the need sufficiently to organize a clean-up program for April 14. Businesses pledged \$1.00 for each high school student who helped. Litter bags were provided by the Leslie County Fish and Game Club, the U. S. Army Corps of Engineers and private businesses. Approximately fifteen trucks were volunteered and the dumpsters were put out at the places requested by the Garbage board. Results were 44 students, approximately 60 adults and from 1,200 to 1,500 bags of litter collected from the roadsides. Becky Lynch, on a visit from

New York, helped, as did Mrs. Gerhardstein of Cleveland, Ohio, who was visiting her daughter Kathy. Even Dr. Beasley got in the act picking up the trash. Others helping from FNS were Amy Eversmann, Bill and Mary Weaver, Sue Palmer, Barbara Donaghy, Lillian Link, Phil and Minna Isaacs, Darrell and Ruby Moore and six couriers.

The event was successful, but much was left to be done. Consequently Dr. Gascoigne, Rufus Fugate of the County Agricultural Extension Service and others set another clean-up date. April 28 was "Keep America Beautiful Day" and the second drive was to be on that date. Dr. Gascoigne has gotten pledges from businesses and coal companies to give \$12.00 for each Little Leaguer, High School Girls Softball and Boys Baseball player that turns out. All looks well for clean-up number two.

People from the whole county got involved in the clean-up program and many others picked up the litter in front of their homes. It is impractical to attempt to name these people, but they did make a definite contribution to the total effort. Those people who came to Hyden and fanned out along the roadways to pick up the tons of litter were: Earl, Gloria, and Marsha Fields, Vernon and Charlyn Muncy; Preston Fortney, Russell Kenefick, Ed Asher, Ronnie Lewis, Ronnie Stidham, Joe Napier, Emmons Asher, Clayton Lewis, Louise Vanover, Chris Morgan, Keller McDonald, Perle Estridge, Glenn Mosley, Molly and George Sizemore, Jane and Rufus Fugate. Many students from elementary schools and high school were also involved.

It is our county, our litter and our job — together we can uncover the beauty that abounds around us to the health and satisfaction of all.

## THE LESLIE COUNTY HUMANE SOCIETY

By Anne Cundle

In the summer of 1974 the Leslie County Humane Society became a reality.

For animals in this area it was "the survival of the fittest" and frequently animals were subjected to drastic remedies when they became ill. The nearest veterinarian was a minimum of 100 miles round trip, much of it over rough winding roads, and it was just not practical or economical to try and haul sick animals that distance. A great deal of education is still needed to insure that pets, hunting dogs, and domestic animals always receive humane treatment.

A monthly clinic was organized and the Humane Society raised sufficient funds to pay for the services of a veterinarian from Lexington—Dr. Howard Renneker. Frontier Nursing Service staff, particularly Peggy Burden, Ellen Howard Adams and Wanda King, and a few concerned local citizens contributed considerable time and energy towards the success of this clinic. It was first held in the old log (unused) FNS clinic at Stinnett. There was no plumbing or running water and a neighbor, Mrs. Jackie Howard, let us hook a hose to her water supply. The only furniture was an old desk and some benches. Dr. Renneker did a fantastic job working under unbelievably primitive conditions. Many dogs and cats received their inoculations, and sick and injured animals were treated. Some, of course, could not be healed, but I like to think that at least their suffering was alleviated. Spaying and neutering was done successfully and in spite of the difficulties; every effort was made to keep a sterile field for surgery; complications were very rare. Although dogs and cats were the majority of pets, one day a coon was brought in and another time, some goats. Early in 1976 we had to move to a new location, an old clinic building belonging to the Dry Hill Presbyterian Church. Through the kindness of the church council we were able to have this building rent free. The 4-H children used the clinic for a project and a few were able to observe Dr. Renneker and to learn about care for animals. In March 1977 it was necessary for Dr. Renneker to leave us, but, fortunately, Dr. E. J. Tomas has now located in Hazard and professional services were more available. Dr. Tomas was also willing to make house calls!

The Humane Society decided now to put all its efforts into building an animal shelter. To find an available site was our first problem—money was scarce and so was suitable land in Leslie County. However, help was at hand from an industrious and well-respected gentleman by the name of Floyd Wells. He offered to lease us a site about seven miles out of Hyden right on a main road. An Open Meeting was held with Judge Muncy and all the Magistrates of the Fiscal Court in attendance, and over sixty interested citizens aired their concerns and voiced their opinions and approval. Once again fund raising events were conducted and donations came in from many individuals, from clubs such as the Fish and Game, the Lions and Deerhunters, and from businesses such as the Hyden Citizens Bank and Moore and Sons Lumber Company.

It has been a long uphill road with many setbacks and frustrations—garbage is frequently dumped on the site, damage has been done to the building and over 600 cement blocks were stolen, but somehow we will get it finished, hopefully this summer.

We are very fortunate to have had Phil Isaacs donate hours of his time and skills towards the construction and supervision of the building. We have had old fashioned “workings” twice and are grateful to all those volunteers.

Our County Judge Executive, Allen Muncy, and the Fiscal Court have agreed to provide us with one employee to act as Shelter Superintendent, and Perry County has agreed to give us financial support in return for the privilege of bringing their stray dogs over to the shelter.

We still have a few people in the county who are opposed to this shelter—I hope we can convince them that our purposes are to prevent suffering by providing a place to take unwanted strays and also to provide information and education on the humane treatment of animals. The Humane Society will be responsible for monitoring the management of the shelter and our dream is to make it a model demonstration which other counties can follow.

## BEYOND THE MOUNTAINS

The Washington Committee, under the able leadership of Mrs. Ralph Becker, Chairman, and Mrs. Clarence Brown, Benefit Chairman, organized an unusual, charming and popular reception held at the Botanic Gardens in honor of the Surgeon General, the National Chairman and the Director of FNS. Trustee Clint Kelly had arranged a specially coordinated color slide show, using simultaneously four projectors and two screens, reviewing the full scope of FNS activities with pictures he had taken in the last eighteen months. These were presented at one extremity of the building, where they were complimented by a group of fourteen large black and white pictures illustrating the chief concerns of the Service. At the other end of the building was a wine and cheese reception, with Appalachian music presented by the Smithsonian Institute staff. In between was a hall of orchids where visitors were introduced to Mrs. Becker, Miss Ireland, Mrs. Jefferson Patterson, the Kentucky Congressional Delegation and the Director.

The Surgeon General, Dr. Julius Richmond, spoke in clear support of the FNS as a rural health demonstration, of the effectiveness of its primary care utilizing nurse practitioners, and emphasized the twenty-seven year zero maternal mortality record of Frontier Nursing Service.

The Benefit was extremely well attended. The ambience of the Botanic Gardens is unparalleled and offered a marvelous opportunity to speak with many friends of FNS, both old and new.

Mrs. Jefferson Patterson made this a particularly agreeable visit to Washington. She was hostess to our Oral History staff as well as to Kate and me and enabled us to make useful contacts with the National Archives and the National Library of Medicine which we hope will lead to support in microfilming some of our historic records and their appropriate storage.

The Blue Grass Committee, under the very apt leadership of Mrs. James G. Kenan III (former courier Betty Parrish), and supported by many of our young friends in the Lexington area, held a unique benefit for the FNS in cooperation with the Paris American Legion Gun Club. Mr. Ben Upson, Director of the Orvis Shooting School, Manchester, Vermont, was engaged to instruct sportsmen of all levels of shooting ability, and to refine their

skills. This benefit was held for three days and was highly successful, both in the amount of money raised and in finding new friends for the Frontier Nursing Service.

The Louisville Committee, under the chairmanship of Mrs. James W. Stites, Jr., assisted by Mrs. William M. Schreiber (former courier Sandy Gray), came up with a novel idea for a party for FNS friends in February. The Committee sponsored a "Learn to Disco" evening at the Whispering Hills Country Club. Dale Deaton of our Oral History Project and his wife attended from Hyden and reported that the dance was great fun and a huge success.

For the first time in twelve years the National Chairman and I had the chance to visit with the FNS Cincinnati Committee when three former couriers, Mrs. Robert F. Muhlhauser (Ann Danson), Mrs. Booth Shephard (Allyn Johnson), and Mrs. Richard P. Stewart (Mary Burton) arranged a reception at the Queen City Club. Kate and I spoke about FNS to a host of friends from Cincinnati, Glendale and as far away as Dayton, including Dr. Charles Barrett of the University of Cincinnati, Dr. William Schubert of the Childrens Hospital, Dr. Robert Smith of the Department of Family Practice at the University, two former volunteers who are now medical students—Horace Henriques and Mark Funk; and old friend and Trustee, Mrs. John B. Hollister, and two former couriers, Treon McGuire Christine and Dorothy Caldwell who came with her brother, Jack, a frequent visitor to Wendover in the early years.

Mr. and Mrs. John Lawrence wound up our visit with a wonderful evening and dinner at their home where we again had the pleasure of talking to friends about the FNS.

Kate Ireland showed FNS slides and spoke about volunteerism to the students at the Madeira School and also at St. Timothy's School, of which she is an alumnus. In May, Kate was invited by Mrs. John Marshall Prewitt to talk about FNS to the Vassar Club of Lexington. She showed slides at the home of Mrs. Michael Ades. Although many of the Vassar graduates had heard of the FNS, they were not aware of the extent of our educational and service programs. Kate hopes that some courier applications will result from her presentations.

Kate also was invited to testify on Primary Health Care before the President's Coal Commission at a hearing in Pikeville,



Kentucky. The Coal Commission was created to conduct a comprehensive review of the coal industry in the United States with particular emphasis on matters pertaining to productivity, capital investment and the general economic health of the industry, including health, safety and living conditions in the coal fields.

*W. B. Rogers Brasley*

---

**FNS RADIO SPOT #32**  
**Food Quiz #5**

**MUSIC:** Louis Armstrong Jazz

**NARRATOR:** And now, time for the Food Quiz, brought to you as a public service by the Frontier Nursing Service. The question:

If you want the best sources of vitamin D, which strengthens bones and teeth, what should you eat?

- A. Tuna, salmon, sardines
- B. Apples, oranges, grapefruit
- C. Walnuts, beans, almonds
- D. Cheese, ice cream, water

**SOUND:** Buzzer

**NARRATOR:** The correct answer is A, tuna fish, salmon, sardines. Milk also supplies Vitamin D, although in smaller amounts.

## FRONTIER NURSING SERVICE, INC.

### BOARD OF GOVERNORS

#### Chairman

Miss Kate Ireland, Wendover, Ky.

#### Vice-Chairmen

Mrs. Alfred R. Shands III, Crestwood, Ky.

Mr. Henry R. Heyburn, Louisville, Ky.

#### Treasurer

Mr. Homer L. Drew, One First Security Plaza, Lexington, Ky.

#### Assistant Treasurer

Mr. W. F. Brashear, Hyden, Ky.

#### Recording Secretary

Mrs. John Marshall Prewitt, Mt. Sterling, Ky.

#### Corresponding Secretary

Miss Jane Leigh Powell, Glen Cove, New York

Mr. C. V. Cooper, Hazard, Ky.  
Mrs. Albert Ernst, Perkiomenville, Pa.  
Dr. Stuart Graves, Jr., M.D., Louisville, Ky.  
Miss Fredericka Holdship, Sewickley, Pa.  
Mrs. Clinton W. Kelly III, Reston, Va.  
Mr. John H. Kerr, Jr., Lexington, Ky.  
Mr. Edward A. Mattingly, Hyden, Ky.

Mr. Eddie J. Moore, Hyden, Ky.  
Mr. James Mosley, Hyden, Ky.  
Mr. Wade Mountz, Louisville, Ky.  
Dr. C. T. Nuzum, Chapel Hill, N. C.  
Mrs. Burgess P. Standley, Medfield, Mass.  
Dr. Willis D. Weatherford, Jr., Berea, Ky.  
Dr. Patience H. White, Brookline, Mass.

#### Honorary Chairman

Mrs. Jefferson Patterson, Washington, D. C.

#### Honorary Treasurer

Mr. Edward S. Dabney, Lexington, Ky.

#### Honorary Members

Miss Helen E. Browne, C.B.E., Milford, Pa.  
Mrs. John Harris Clay, Louisville, Ky.

#### Members Emeritus

Dr. Francis M. Massie, Lexington, Ky.  
Mrs. Floyd H. Wright, Lexington, Ky.

#### AUDITORS

Ernst & Ernst, Lexington, Ky.

#### TRUSTEES

Mr. Brooke Alexander, New York  
Mrs. Charles W. Allen, Jr., Glenview, Ky.  
Mrs. Edward Arpee, Lake Forest, Ill.  
Mr. Richard T. Baker, Cleveland, Ohio  
Mrs. Richard M. Bean, Lexington, Ky.  
Mrs. Ralph E. Becker, Washington, D. C.  
Miss Sarah Gibson Blanding, Lakeville, Conn.  
Mr. Kenyon Castle Bolton, Cleveland, Ohio  
Dr. Peter P. Bosomworth, Lexington, Ky.  
Dr. John Breckinridge, Denver, Col.  
Mr. John B. Breckinridge, Lexington, Ky.  
Mr. R. B. Campbell, Hyden, Ky.  
Mr. R. B. Campbell, Jr., Lexington, Ky.  
Mrs. R. B. Campbell, Hyden, Ky.  
Dr. Wallace Campbell, Pippa Passes, Ky.  
Mr. Joseph C. Carter, Versailles, Ky.  
Mrs. Charles S. Cheston, Jr., Topsfield, Mass.  
Mrs. N. Holmes Clare, New York  
Mr. A. B. Comstock, Louisville, Ky.  
Mrs. John Sherman Cooper, Washington  
Judge A. E. Cornett, Hyden, Ky.  
Mrs. David Dangler, Lake Forest, Ill.  
Mrs. John E. Dawson, Dover, Mass.  
Mr. Joseph C. Donnelly, Jr., Medfield, Mass.  
Mrs. Robert W. Estill, Dallas, Texas  
Mrs. George E. Evans, Jr., Lexington, Ky.  
Mrs. Rex C. Farmer, Hyden, Ky.  
Miss Margaret Gage, Pacific Palisades, Calif.  
Mrs. William A. Galbraith, Sewickley, Pa.  
Mrs. Robert S. Gawthrop, West Chester, Pa.  
Mrs. John L. Grandin, Jr., Chestnut Hills, Mass.  
Mrs. Gus Griffin, Louisville, Ky.  
Dr. John W. Greene, Jr., Lexington, Ky.  
Dr. Charles E. Hagyard, Lexington, Ky.  
Mr. James Hardy, Louisville, Ky.  
Mrs. Paul Church Harper, Lake Forest, Ill.  
Mr. Dwight Hendrix, Hyden, Ky.  
Mrs. Horace F. Henriques, Jr., Greenwich, Conn.  
Mr. John G. Heyburn II, Louisville, Ky.  
Mrs. Charles H. Hodges, Jr., Grosse Pointe, Mich.  
Dr. James B. Holloway, Jr., Lexington, Ky.  
Mrs. James B. Holloway, Jr., Lexington, Ky.  
Mrs. T. N. Horn, Greenville, Miss.  
Mrs. Gilbert W. Humphrey, Chagrin Falls, Ohio  
Mr. Melville H. Ireland, Lake Forest, Ill.  
Mr. R. W. P. Johnston, Lexington, Ky.  
Mrs. E. Donald Jones, Bellefontaine, Ohio  
Mr. Clinton W. Kelly III, Reston, Va.

Miss Deborah King, Dover, Mass.  
Mrs. E. Felix Kloman, Washington, D. C.  
Mrs. Robert Ashton Lawrence, Westwood, Mass.  
Miss Betty Lester, Hyden, Ky.  
Miss Agnes Lewis, Maryville, Tenn.  
Mrs. Marion E. S. Lewis, Matamoras, Pa.  
Mrs. R. McAllister Lloyd, New York  
Mrs. Charles J. Lynn, Indianapolis, Ind.  
Miss Hope McCown, Ashland, Ky.  
Mr. Angus W. McDonald, Lexington, Ky.  
Mrs. Arthur B. McGraw, Grosse Pointe, Mich.  
Mr. J. Gibson McIlvain II, Devon, Pa.  
Mrs. Cleveland Marcum, Lexington, Ky.  
Mrs. Langdon Marvin, New York  
Mrs. Elinor M. Moore, Lexington, Ky.  
Mr. Clay L. Morton, Louisville, Ky.  
Hon. Thruston B. Morton, Louisville, Ky.  
Mrs. Robert F. Muhlhauser, Glendale, Ohio  
Mrs. Samuel E. Neel, McLean, Va.  
Mr. Robert W. Nichols, Louisville, Ky.  
Mrs. Samuel H. Ordway, New York  
Miss Evelyn M. Peck, Columbia, Mo.  
Mrs. Arthur Perry, Jr., Concord, Mass.  
Mrs. Stanley D. Petter, Jr., Lexington, Ky.  
Mrs. Charles S. Potter, Chicago, Ill.  
President National Society of Daughters of  
Colonial Wars  
Lady Ramsbotham, Hamilton, Bermuda  
(Honorary)  
Mrs. James N. Rawleigh, Jr., Harrods Creek, Ky.  
Mrs. George L. Robb, Westwood, Mass.  
Mrs. William C. Robinson, Jr., Versailles, Ky.  
Mrs. William M. Schreiber, Louisville, Ky.  
Mrs. John Sherwin, Cleveland, Ohio  
Mrs. Seymour Siegel, New York  
Dr. Harvey Sloane, Louisville, Ky.  
Mr. Albert P. Smith, Jr., Russellville, Ky.  
Mrs. James W. Stites, Jr., Louisville, Ky.  
Dr. Grady Stumbo, Hindman, Ky.  
Mr. Kenneth J. Tuggle, Louisville, Ky.  
Mrs. Paul J. Vignos, Jr., Chagrin Falls, Ohio  
Mrs. Ernest R. von Starck, Downingtown, Pa.  
Mr. Arnold Whitridge, New York  
Mrs. Erskine P. Wilder, Jr., Barrington, Ill.  
Mr. Ralph B. Williams, Boston, Mass.  
Mr. George Wooton, Hyden, Ky.  
Mrs. William W. Wotherspoon, Grosse Pointe, Mich.  
Miss Barbara Wriston, New York

Mr. William T. Young, Lexington, Ky.

**NATIONAL MEDICAL COUNCIL**

- |   |   |
|---|---|
| Dr. Glenn Bratcher, Cincinnati, Ohio          | Dr. S. D. Palmer, Birmingham, Ala.        |
| Dr. W. F. Bulle, St. Louis, Mo.               | Dr. E. D. Pellegrino, New Haven, Conn.    |
| Dr. Bayard Carter, Hillsborough, N. C.        | Dr. John A. Petry, Louisville, Ky.        |
| Dr. C. L. Combs, Hazard, Ky.                  | Dr. John Rock, Temple, N. H.              |
| Dr. R. Gordon Douglas, Little Compton, R. I.  | Dr. Robert T. Sceery, Cohasset, Mass.     |
| Dr. Isadore Dyer, New Orleans, La.            | Dr. Richard M. Smith, Boston, Mass.       |
| Dr. Ben Eiseman, Englewood, Col.              | Dr. Reginald Smithwick, Boston, Mass.     |
| Dr. Laman A. Gray, Louisville, Ky.            | Dr. James E. Thompson, Sarasota, Fla.     |
| Dr. Louis M. Hellman, Washington, D. C.       | Dr. Kenneth Warren, New York              |
| Dr. Louise Hutchins, Berea, Ky.               | Dr. George W. Waterman, Providence, R. I. |
| Dr. Arthur H. Keeney, Louisville, Ky.         | Dr. Thomas Wiegert, Lexington, Ky.        |
| Dr. John F. W. King, New York                 | Dr. J. Huston Westover, Woodstock, Vt.    |
| Dr. Samuel B. Kirkwood, North Sandwich, N. H. | Dr. John Whitridge, Jr., Baltimore, Md.   |
| Dr. Frank J. Lepreau, Westport, Mass.         | Dr. Elwood L. Woolsey, Harlan, Ky.        |
| Dr. Rustin McIntosh, Tyngingham, Mass.        | Dr. Hermann A. Ziel, Jr., Lansing, Mich.  |

inclusive of

**MEDICAL ADVISORY COMMITTEE**

- |                                      |  |
|--------------------------------------|--|
| Dr. Marion G. Brown, Lexington, Ky.  | Dr. Carl M. Friesen, Lexington, Ky.        |
| Dr. Keith W. Cameron, Ary, Ky.       | Dr. John W. Greene, Jr., Lexington, Ky.    |
| Dr. Harvey Chenault, Lexington, Ky.  | Dr. James B. Holloway, Jr., Lexington, Ky. |
| Dr. Arnold B. Combs, Lexington, Ky.  | Dr. Coleman C. Johnston, Lexington, Ky.    |
| Dr. Allen L. Cornish, Lexington, Ky. | Dr. Edward H. Ray, Lexington, Ky.          |
| Dr. Carl Fortune, Lexington, Ky.     | Dr. Harold D. Rosenbaum, Lexington, Ky.    |
| Dr. Walter D. Frey, Lexington, Ky.   | Dr. David B. Stevens, Lexington, Ky.       |
| Dr. A. J. Whitehouse, Lexington, Ky. |  |

**NATIONAL NURSING COUNCIL**

- |   |                                       |
|---|---------------------------------------|
| Miss Maryellen Amato, Lexington, Ky.    | Miss Phyllis J. Long, Atlanta, Ga.    |
| Miss Laurette Beck, Brooklyn, N. Y.     | Dr. Ruth Lubic, New York              |
| Miss Hazel Corbin, New York             | Dr. Marion McKenna, Lexington, Ky.    |
| Miss Naomi Deutsch, New Orleans, La.    | Dr. Beulah Miller, Ada, Okla.         |
| Miss Ruth Doran, Denver, Colo.          | Miss Mary L. Mills, Washington, D. C. |
| Dr. Loretta Ford, Rochester, N. Y.      | Mrs. Celia Oseasohn, Montreal, Canada |
| Miss E. Jane Furnas, Phoenix, Ariz.     | Miss Carol Randall, Cleveland, Ohio   |
| Miss Louise Griggs, Lexington, Ky.      | Dr. Elizabeth Sharp, Atlanta, Ga.     |
| Mrs. Elinore Hammond, Louisville, Ky.   | Miss Ruth Spurrier, Frankfort, Ky.    |
| Mrs. E. L. Hebbeler, Lexington, Ky.     | Miss Marion Strachan, New York        |
| Dr. O. Marie Henry, Hyattsville, Md.    | Dr. Helen Tirpak, New York            |
| Miss Elsie M. Warner, Philadelphia, Pa. |                                       |

## MARY BRECKINRIDGE HOSPITAL

### Medical and Dental Staff

G. Bradley Gascoigne III, M.D.  
Medical Director  
Anne A. Wasson, M.D., A.B.F.P., Chief of  
Special Services  
E. Fidelia Gilbert, M.D.  
Stephen Thorngate, M.D., F.A.C.S.  
Yvonne Imbleau, M.D.  
Mark Buchanan, M.D.  
Sister Dorothy Twellman, M.D.  
Joseph A. Levine, D.D.S.  
Gregory Lynne, D.D.S.

### Nursing Staff

Patricia Campbell, R.N., Hospital Nursing  
Care Coordinator  
Bernadette Hart, R.N., C.N.M., Midwifery  
Coordinator  
Mary Weaver, R.N., A.D.N., C.N.M.,  
C.F.N.P., Primary Care Coordinator  
Wanda King, R.N., C.N.M., C.F.N.P.,  
Assistant Nursing Care Coordinator—MTD  
Patsy Tyson, R.N., B.S., Assistant Nursing  
Care Coordinator—Maternity  
Gail Alexander, R.N., A.A., F.N., Assistant  
Patient Care Coordinator—Primary Care  
Center Extensions

### Administrative and Supportive Services

Kenneth Palmer, M.B.A., Administrator  
Joe R. Lewis, R.Ph., Pharmacy  
Gary Worley, M.T. (ASCP), Laboratory  
Phillip Reppond, M.S.W., Social Work  
James Click, L.P.T., Physical Therapy  
Susan Swartz, R.T., X-Ray  
Betty Helen Couch, A.R.T., Medical Records  
Mae Campbell, Food Service Manager  
Lillie Campbell, Housekeeping  
Nannie Hornsby, Purchasing  
John C. Campbell, Maintenance

F.N. indicates nurses who have completed post-graduate education in Family Nursing  
C.F.N.P. indicates family nurses who have taken and passed the national certifying examinations.

## Director

W. B. R. Beasley, M.D., M.P.H., D.T.M. & H.,  
Hyden, Kentucky 41749

### Director of Nursing

Elaine Pendleton, R.N., B.S., M.A., C.N.M.

### Administrative

Peggy G. Elmore, B.A., Administrative  
Assistant  
Ron Hart, B.A., M.Div., M.R.E.,  
Administrative Assistant for Primary  
Care Administration  
Kathleen Dalton, M.B.A., M.P.H.,  
Grants Writer

Pasco Capuano, M.B.A., Director of Finance  
Kevin Calos, M.B.A., Controller  
David W. Keen, B.S., Assistant Controller  
Gregory McNeil, B.S., Business Office  
Manager

Darrell Moore, B.A., Personnel

Ruth O. Morgan, Donor Secretary

### Frontier School of Midwifery and Family Nursing

Sr. Dorothy Dalton, R. N., M.S.N., C.N.M.  
Carolyn Miller, R.N., M.A., C.N.M., Nurse-  
Midwifery Education Coordinator  
Marcia McDonald, R.N., M.S.N., C.F.N.P.,  
Family Nurse Education Coordinator  
Molly Lee, R.N., C.N.M., M.T.D., Assistant  
Director and Senior Nurse-Midwife  
Lillian Link, R.N., B.S., C.F.N.P.  
Janis Tobey, R.N., B.S.N., P.N.P.  
Alice Whitman, Registrar

## DISTRICT NURSING SERVICE

District Nursing Care Coordinator—  
Position Vacant

Nancy Williams, District Records

Jessie Preston Draper Memorial Nursing  
Center (Beech Fork)

Sr. Ellen Hartung, R.N., C.R.N.A., B.S.,  
C.N.M., F.N.

Christiana Guy, R.N., A.A., C.N.M., F.N.

Caroline Butler Atwood Memorial Nursing  
Center and Clara Ford Nursing Center  
(Red Bird-Flat Creek)

Susan Hull, R.N., A.A., F.N.

Bob Fork District (Betty Lester Clinic)

Gail Alexander, R.N., A.A., F.N.

Lynne Pethtel Parker, R. N., F.N.

Oneida Center

Mabel R. Spell, R.N., C.N.M., C.F.N.P.,  
Assistant Director

Diane Alvies, R. N., C.N.M., F.N.

Wooton Center

Sharon D. Koser, R.N., B.S.N., C.F.N.P.

Carol Read, R.N., B.S., F.N.

## HOME HEALTH AGENCY

Diane Willson, R.N., Coordinator

Kathryn Gerhardtstein, R.N., B.S.

Sandra Gross, R.N.

Elizabeth Bassasear, R.N., B.S.

## FORM OF BEQUEST

For the convenience of those who wish to remember the Frontier Nursing Service in their wills, this form of bequest is suggested:

“I hereby give, devise and bequeath the sum of ..... dollars (or property properly described) to the Frontier Nursing Service, a corporation organized under the laws of the State of Kentucky.”

### HOW ENDOWMENT GIFTS MAY BE MADE

The following are some of the ways of making gifts to the Endowment Funds of the Frontier Nursing Service:

1. **By Specific Gift under Your Will.** You may leave outright a sum of money, specified securities, real property, or a fraction or percentage of your estate.

2. **By Gift of residue under Your Will.** You may leave all or a portion of your residuary estate to the Service.

3. **By Living Trust.** You may put property in trust and have the income paid to you or to any other person or persons for life and then have the income or the principal go to the Service.

4. **By Life Insurance Trust.** You may put life insurance in trust and, after your death, have the income paid to your wife or to any other person for life, and then have the income or principal go to the Service.

5. **By Life Insurance.** You may have life insurance made payable direct to the Service.

6. **By Annuity.** The unconsumed portion of a refund annuity may be made payable to the Service.

. . . . .

The principal of the gifts will carry the donor's name unless other instructions are given. The income will be used for the work of the Service in the manner judged best by its Trustees.



## FRONTIER NURSING SERVICE, Inc.

Its motto:

“He shall gather the lambs with his arm  
and carry them in his bosom, and shall  
gently lead those that are with young.”

Its object:

To safeguard the lives and health of mothers and children by providing and preparing trained nurse-midwives for rural areas in Kentucky and elsewhere, where there is inadequate medical service; to give skilled care to women in childbirth; to give nursing care to the sick of both sexes and all ages; to establish, own, maintain and operate hospitals, clinics, nursing centers, and midwifery training schools for graduate nurses; to educate the rural population in the laws of health, and parents in baby hygiene and child care; to provide expert social service, to obtain medical, dental and surgical services for those who need them at a price they can afford to pay; to ameliorate economic condition inimical to health and growth, and to conduct research towards that end; to do any and all other things in any way incident to, or connected with, these objects, and, in pursuit of them, to cooperate with individuals and with organizations, whether private, state or federal; and through the fulfillment of these aims to advance the cause of health, social welfare and economic independence in rural districts with the help of their own leading citizens.

Articles of Incorporation of the  
Frontier Nursing Service, Article III.

---

**Contributions to Frontier Nursing Service, Inc. are tax deductible  
under Section 501 (c) (3) of the Internal Revenue Code of 1954.**

---

Gifts of stock should be sent to

**FRONTIER NURSING SERVICE**  
Mr. Homer L. Drew, Treasurer  
First Security National Bank & Trust Co.  
One First Security Plaza  
Lexington, Kentucky 40507

Gifts of money should be made  
payable to

**FRONTIER NURSING SERVICE**  
and sent to  
Office of the Director  
Frontier Nursing Service  
Wendover, Kentucky 41775

## **STAFF OPPORTUNITIES**

### **Nurse-Midwifery and Family Nurse Practitioner Faculty —**

For the Frontier School of Midwifery and Family Nursing

### **Coordinator of Couriers and Volunteers — of Wendover**

Possibly the most responsible position in FNS

### **Public Relations Volunteer —**

To write newspaper and Bulletin articles, radio and TV spots,  
and to participate in a variety of public relations and community  
activities

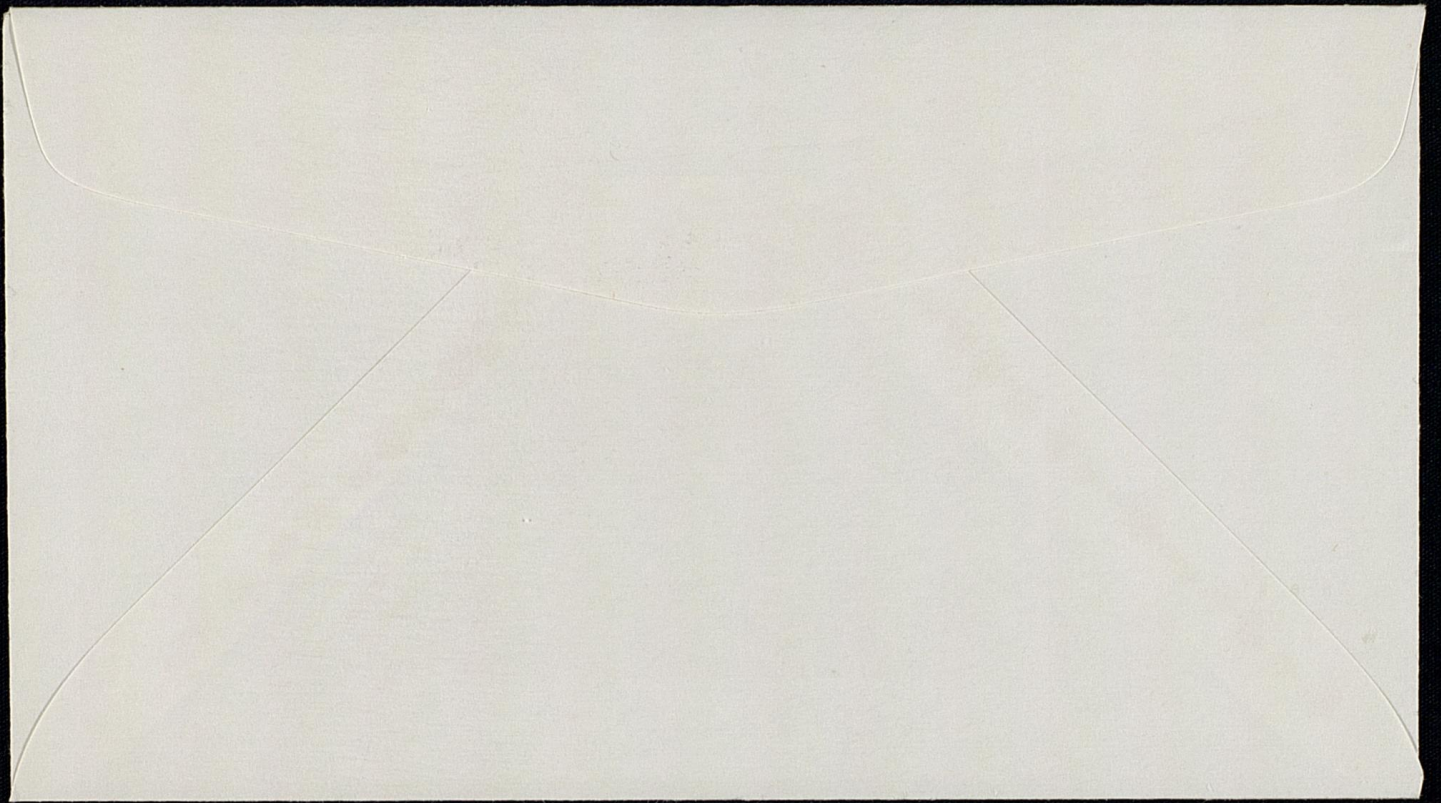
### **Oral History Volunteers —**

For transcription of tapes and to gain experience in other  
aspects of the Oral History Project

Quarterly Bulletin Office  
Frontier Nursing Service  
Wendover, Kentucky 41775

**Loose Item**





**Loose Item**



FRONTIER NURSING SERVICE, Inc.

Dear Mr. [Name]

We shall be glad to have you join our staff and help us in our work.

The position of [Title] is a full-time position and requires a minimum of [Education] and [Experience]. The salary for this position is \$[Amount] per year. We are looking for a person who is interested in nursing and who is willing to work in a rural area. If you are interested, please send us your resume and references. We will contact you if we are interested in your application.

Sincerely,  
[Name]

Frontier Nursing Service, Inc.  
[Address]

Mr. [Name]  
[Address]  
[City, State, Zip]