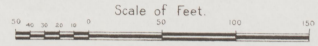


DEC. 1927
LEBANON
Ky.



2

2



Copyright 1927 by the Lebanon Map Co.

WATER

WATER

KOBERT AV

PROCTOR-KNOTT ST

CLEAVER AV

5 SPALDING AV. 9

PROCTOR-KNOTT (MARKET)

MULBERRY

MULBERRY

DEPOT

3 DEPOT

4

MAIN

MAIN

13

18

14

VAN HORN HOTEL

S.H. GRINSTEAD CO. POULTRY & EGGS

LEBANON MACHINE SHOP

MARION COUNTY COURT HO.

PLUMBING

MOVES

GARAGE

REPAIR SHOP

AMERICAN AIR EXPRESS CO.

MEAS. & PRINTS

A. OF C. CLUB

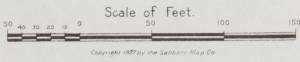
WHEEL & GRAD. WARE HO.

FLOWN & GRAD. WARE HO.

3

3

DEC. 1927
LEBANON
KY.



Copyright 1927 by the Sanborn Map Co.

4

Depot St.

4

NO EXPOSURE

3

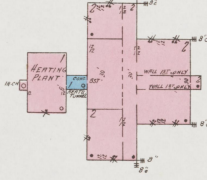
4



11



LEBANON PUBLIC SCHOOL

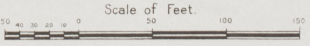


55

56

57

9



Copyright 1927 by the Sanborn Map Co.

NO EXPOSURE

109

NO EXPOSURE

DEPOT

SHUCK ST.

MOCK

MAIN

MULBERRY

COLLEGE

CHANDLER ST.

SHUCK ST.

HARDESTY HOTEL

DEC. 1927 LEBANON KY.

40'

40'

40'

40'

40'

40'

40'

40'

40'

40'

40'

40'

40'

40'

40'

40'

40'

40'

40'

40'

40'

F

P

U

S

O

P

X

E

O

N

N

N

N

N

N

N

N

N

N



DEC. 1927
LEBANON
KY.



Scale of Feet.
0 50 100 150

Copyright 1927 by The Sanborn Map Co.

ST. A 10

40

19 20 21 22

6

5

SPALDING AV.

2

MAIN

9

8

FORREST

5

HARRISON

9

6

KENTUCKY UTILITIES CO. INC. - PLANT 85
ICE PLANT
LIGHTS & POWER, ELEC. METER, WATCHMAN, CLOCK, CAP. TO STORE WATER IN CASE OF EMERGENCY

KENTUCKY UTILITIES CO. INC.
TOOL HO. & GENL. STGE.

J. L. GOODIN
LUMBER STGE.

THE UNITED PRESBY'N CHURCH
LIGHTS, ELEC., HEAT, PUMP

MARION LUMBER CO.
LUMBER SHED
LUMBER STORE
115 (9 1/2) FEET
NO WATER MAIN, PUMP & WATER ELEC. NEAR WATER TOWER

T. M. ESTES
GARAGE
CAR. 75 CARS
WATCHMAN NO. CLOCK
LIGHT ELEC. NO. HEAT
CONC. FL.
FULL OF W.G. & S&L LIGHTS
STEEL TRUSS
DUMMINS
TERRAZZO
DESIGNING
LUMBERING
W. H. D.

POST OFFICE

BLDG. DILAPIDATED & ABANDONED

LUMBER W. H. D.

RESERVOIR (DOMESTIC)

COOLING POND

TANK R.M.

ENGINE SHOP
Y. CHAS. END

ENGINE SHOP
Y. CHAS. END

ENGINE SHOP
Y. CHAS. END

ENGINE SHOP
Y. CHAS. END

ENGINE SHOP
Y. CHAS. END

ENGINE SHOP
Y. CHAS. END

ENGINE SHOP
Y. CHAS. END

ENGINE SHOP
Y. CHAS. END

ENGINE SHOP
Y. CHAS. END

ENGINE SHOP
Y. CHAS. END

ENGINE SHOP
Y. CHAS. END

ENGINE SHOP
Y. CHAS. END

ENGINE SHOP
Y. CHAS. END

ENGINE SHOP
Y. CHAS. END

ENGINE SHOP
Y. CHAS. END

ENGINE SHOP
Y. CHAS. END

ENGINE SHOP
Y. CHAS. END

ENGINE SHOP
Y. CHAS. END

ENGINE SHOP
Y. CHAS. END

ENGINE SHOP
Y. CHAS. END

ENGINE SHOP
Y. CHAS. END

ENGINE SHOP
Y. CHAS. END

ENGINE SHOP
Y. CHAS. END

ENGINE SHOP
Y. CHAS. END

ENGINE SHOP
Y. CHAS. END

ENGINE SHOP
Y. CHAS. END

ENGINE SHOP
Y. CHAS. END

ENGINE SHOP
Y. CHAS. END

ENGINE SHOP
Y. CHAS. END

ENGINE SHOP
Y. CHAS. END

ENGINE SHOP
Y. CHAS. END

ENGINE SHOP
Y. CHAS. END

ENGINE SHOP
Y. CHAS. END

ENGINE SHOP
Y. CHAS. END

ENGINE SHOP
Y. CHAS. END

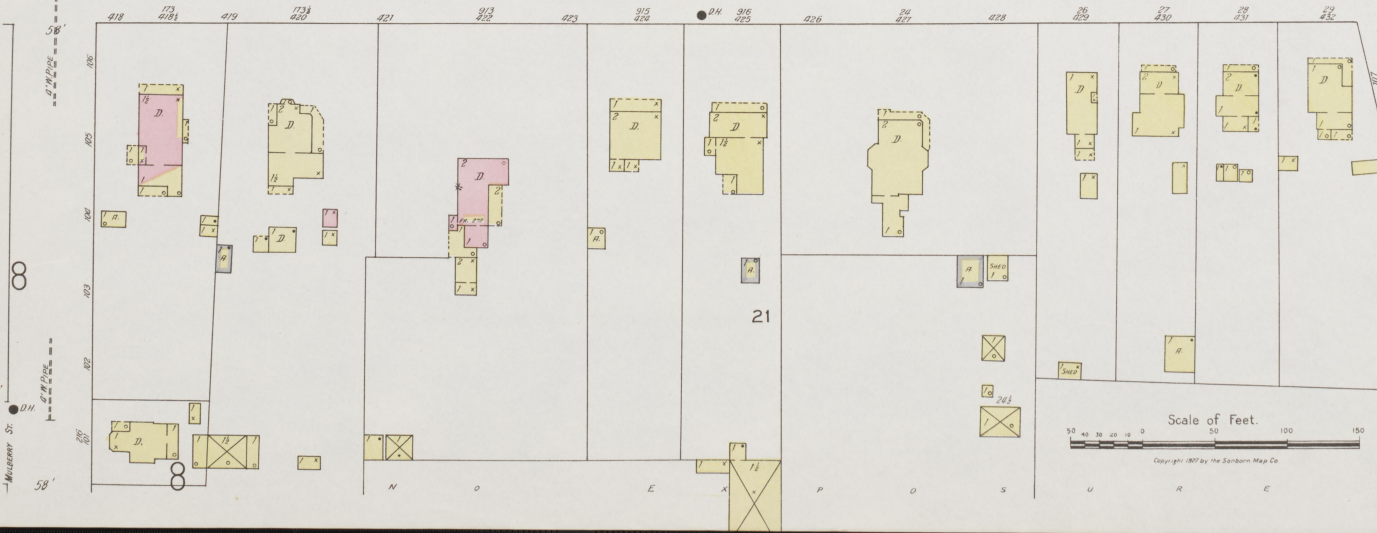
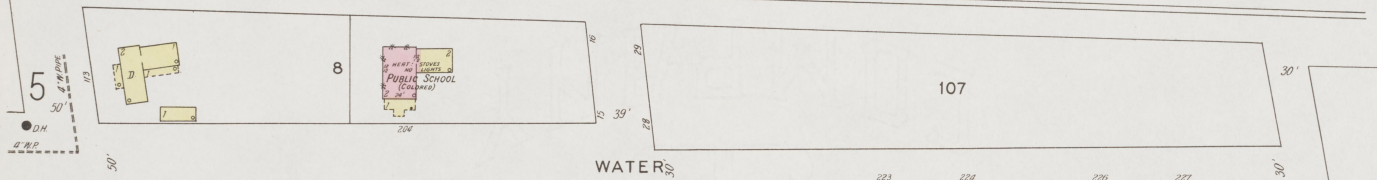
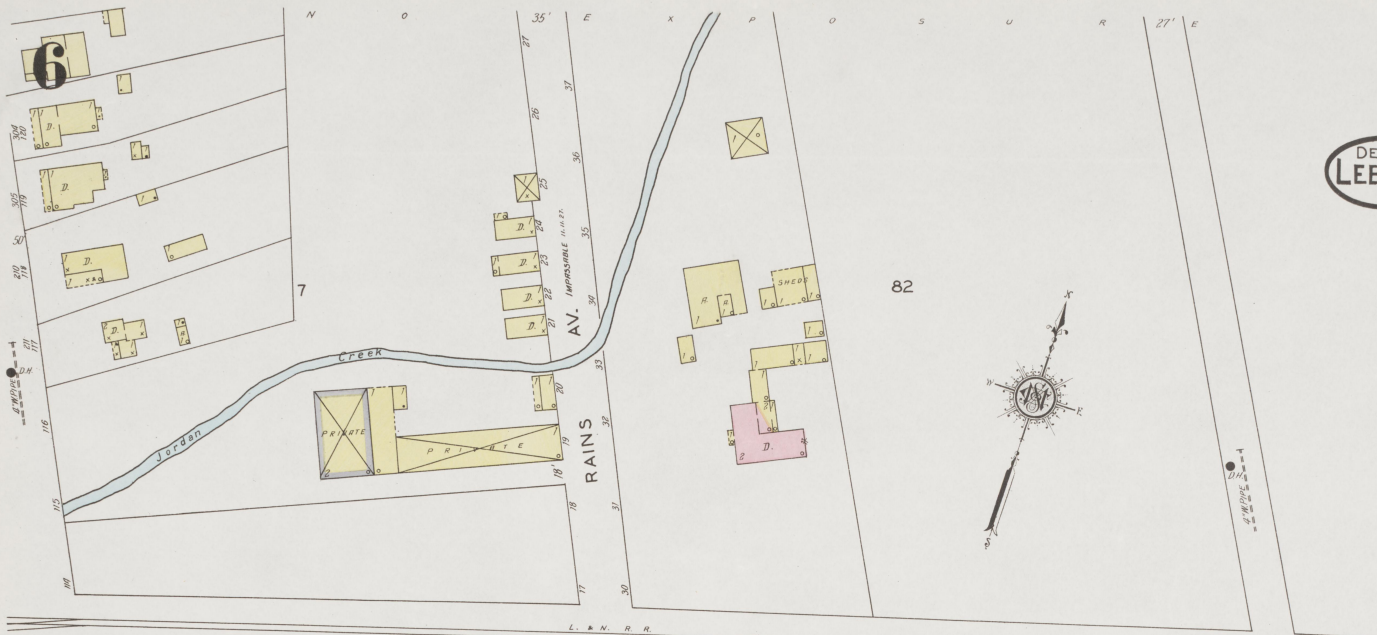
ENGINE SHOP
Y. CHAS. END

ENGINE SHOP
Y. CHAS. END

ENGINE SHOP
Y. CHAS. END

ENGINE SHOP
Y. CHAS. END

DEC. 1927
LEBANON
KY.



N O E X P O S U R E

(3013)

LEBANON OAK FLOORING CO., INC.
LIGHTS & POWER, ELEC. DEP.
HEAT, STEAM, AUTOMATIC WIND, PUMP,
ELECT. FUEL WASTE & SHAWING

DEC. 1927
LEBANON
KY.

53

51

8

LUMBER PILES
AVERAGE HEIGHT 7'

TAYLOR

ROYER AV.

WOODLAWN AV.

WATER ST.

STOR.

108
(10 1/2)

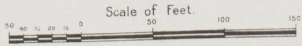
52

MAIN

22

J. C. SIMS
MARBLE & WORKS
STONE CUTTING
DRESSING & POLISHING
LUMBER & BRICK SHEDS
WATER & POWER

C E M E T E R Y



N O E X P O S U R E



NO EXPOSURE

(343)

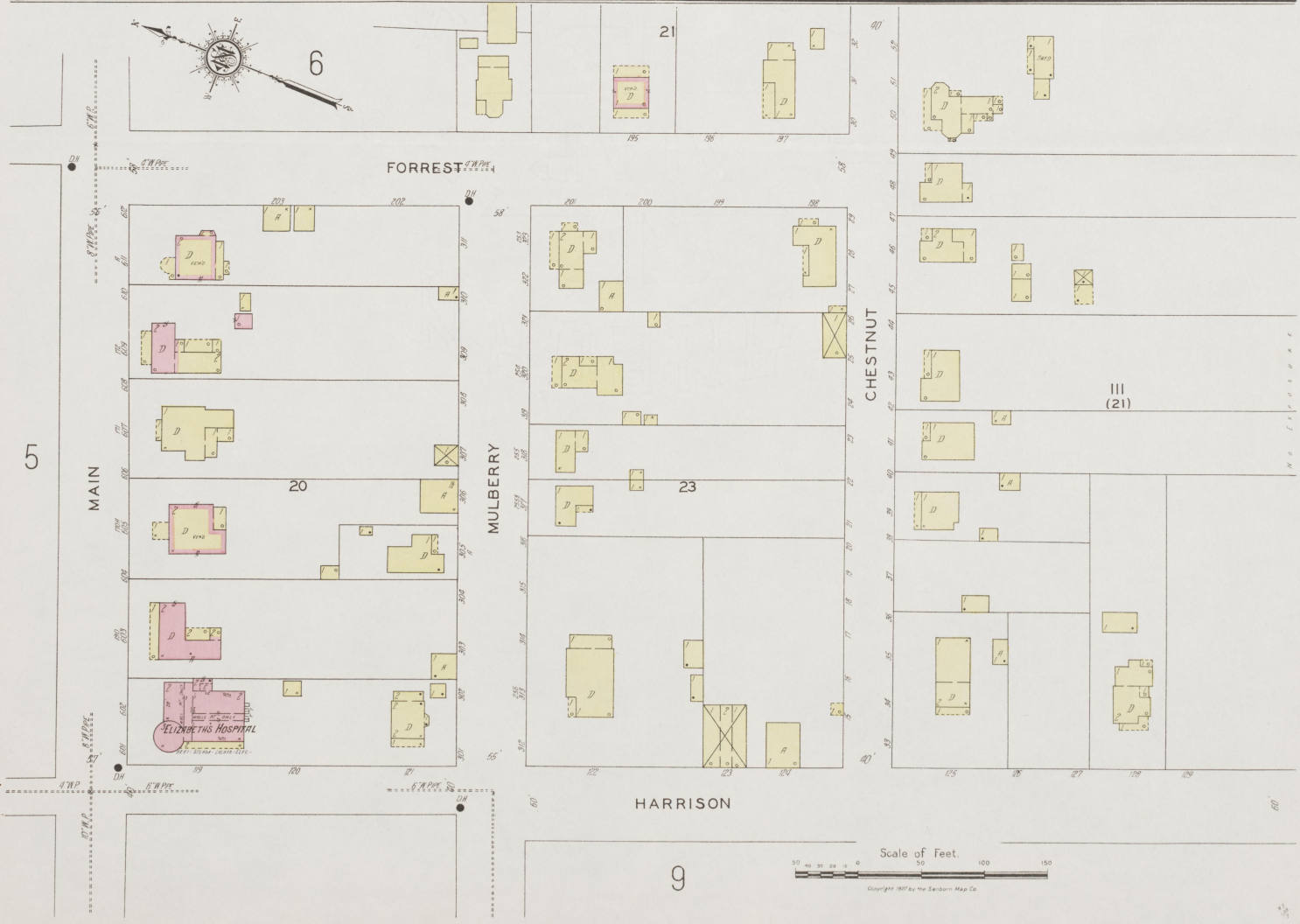
8

8

DEC. 1927
LEBANON
KY.



6



5

9

Scale of Feet.

Copyright 1927 by the Sanborn Map Co.

9



9

DEC. 1927
LEBANON
KY.

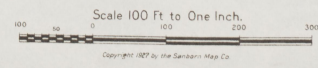
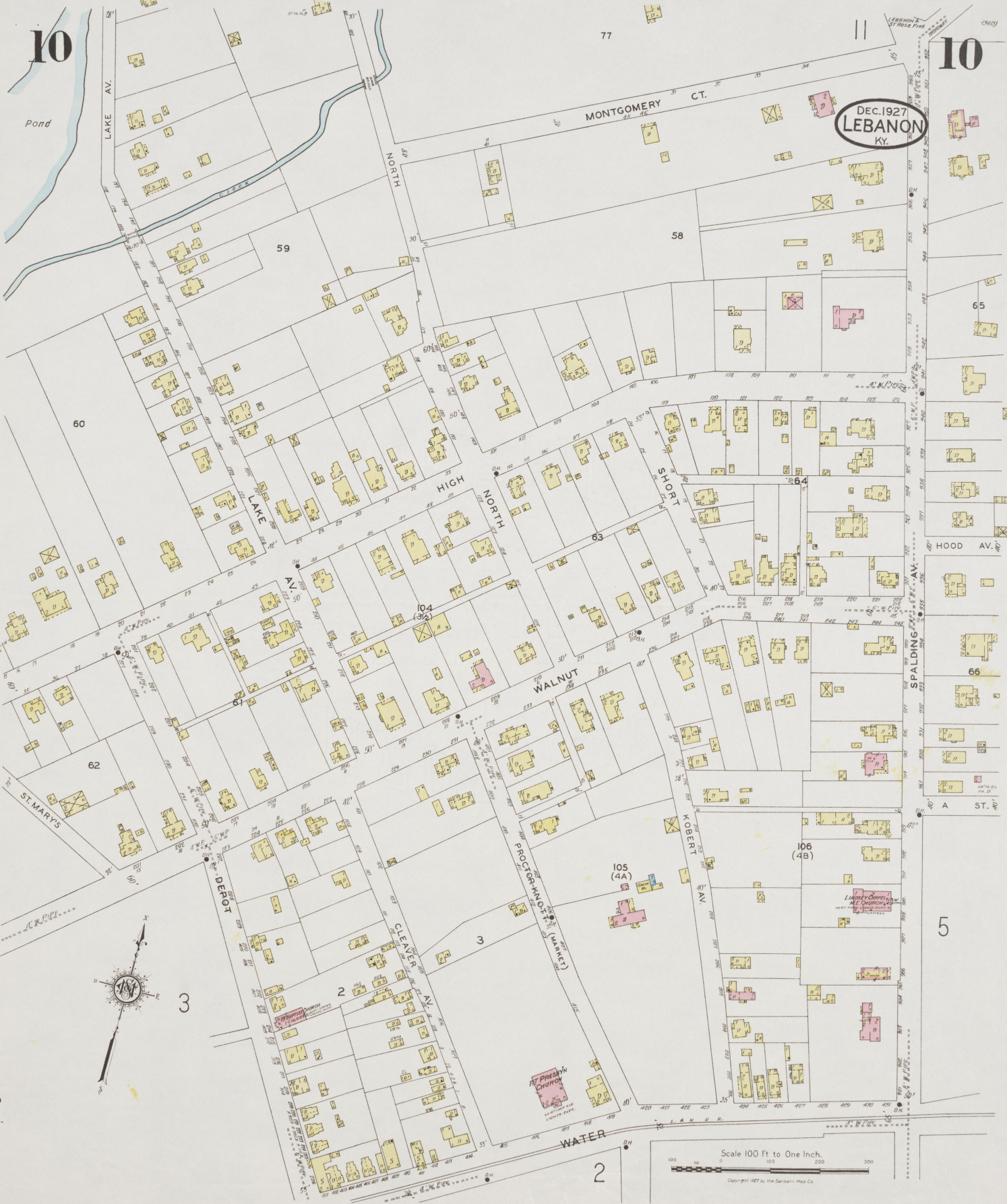


Scale 100 Ft. to One Inch.
Copyright 1927 by the Sanborn Map Co.

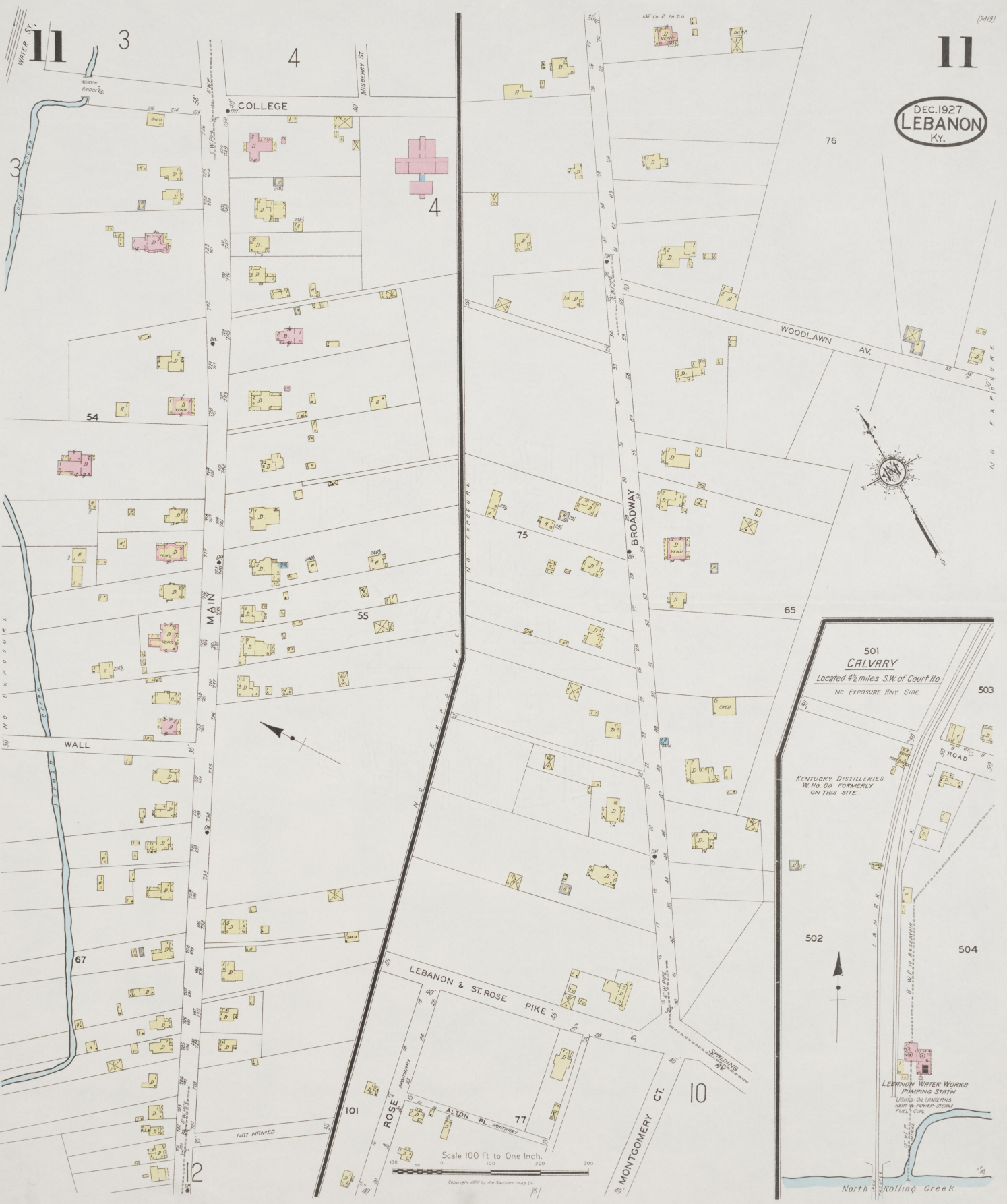
10

10

DEC. 1927
LEBANON
KY.



DEC. 1927
LEBANON
KY.



Scale 100 Ft to One Inch.
0 100 200 300
Copyright 1927 by the Sanborn Map Co.

North Rolling Creek

DEC. 1927
LEBANON
KY.



NO EXPOSURE (3413)

LEBANON KY.

DEC. 1927

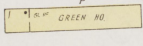
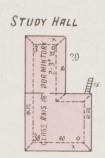
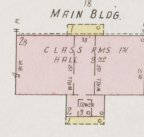
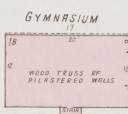
LORETTO MILL CO
Located at Loretto Ky 10 Mile W of Lebanon

COOKS 50 LBS PER 24 HRS. HEAT STEAM ENGINE ONLY - LIGHTS OIL LAMPERS 10 POWER DIE ENG WATER FROM DEEP WELL PUMPED TO BURN GAS TANK RELY TO BY FRIEBANKS MOBILE PLANT CRITY UNWIND

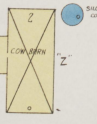
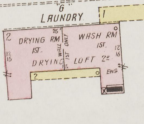
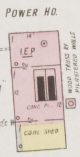
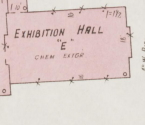
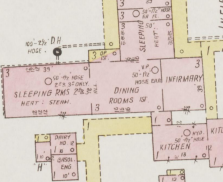
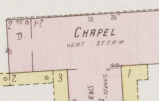
NO EXPOSURE

ST. MARYS COLLEGE

HEAT STEAM - LIGHTS - ELEC. I.E.P. POWER OIL ENG & STEAM FUEL COAL & DIE WATER FROM WELL RESERVOIR CAPACITY 5000 GALS. PUMPED TO STORAGE IN MILL W. OF COLLEGE. CAPACITY 10000 GALLONS. (1) FRIEBANKS MOBILE MOTOR DRIVEN PUMP CAPACITY 30 GALLONS PER MIN. AVERAGE PRESSURE AT 100 GALS



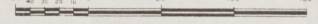
LORETTO ACADEMY



Located 12 Miles W of Lebanon & 2 1/2 Miles W of Loretto Ky

NO WITCHAMEN - HEAT STEAM - LIGHTS - ELEC. I.E.P. POWER STEAM IN LAUNDRY - GASOLINE ENG IN BATH. WATER PUMPED FROM MARYS LAKE LOCATED 24 MILE WEST BY WATER TANK TO WATERS TANK. CAPACITY 30,000 GALS. 25" DIA. DRIVEN BY ONE SHAWMUT PUMP SIZE 7 1/2" CRACK 1000 GAL PER MIN. THE PRESSURE 60 LBS PER SQ INCH (1) ALBRITON PUMP - CAPACITY 500 GAL PER MIN. USED IN EMERGENCY.

Scale of Feet.



Copyright 1927 by the Sargent & Hay Co.