

Ashland Ky.
Aug. 12, 1890.

The undersigned have examined the Sanborn-Perris new map of Ashland Ky. and we are pleased to endorse it as being complete and accurate and we cheerfully recommend it to all the companies represented by us.

J. H. Wicks, *agt.*
S. A. Brining
William Poage
R. C. Richardson
A. K. Hampton
D. C. Hager
D. O. Fisher

Ashland

KENTUCKY

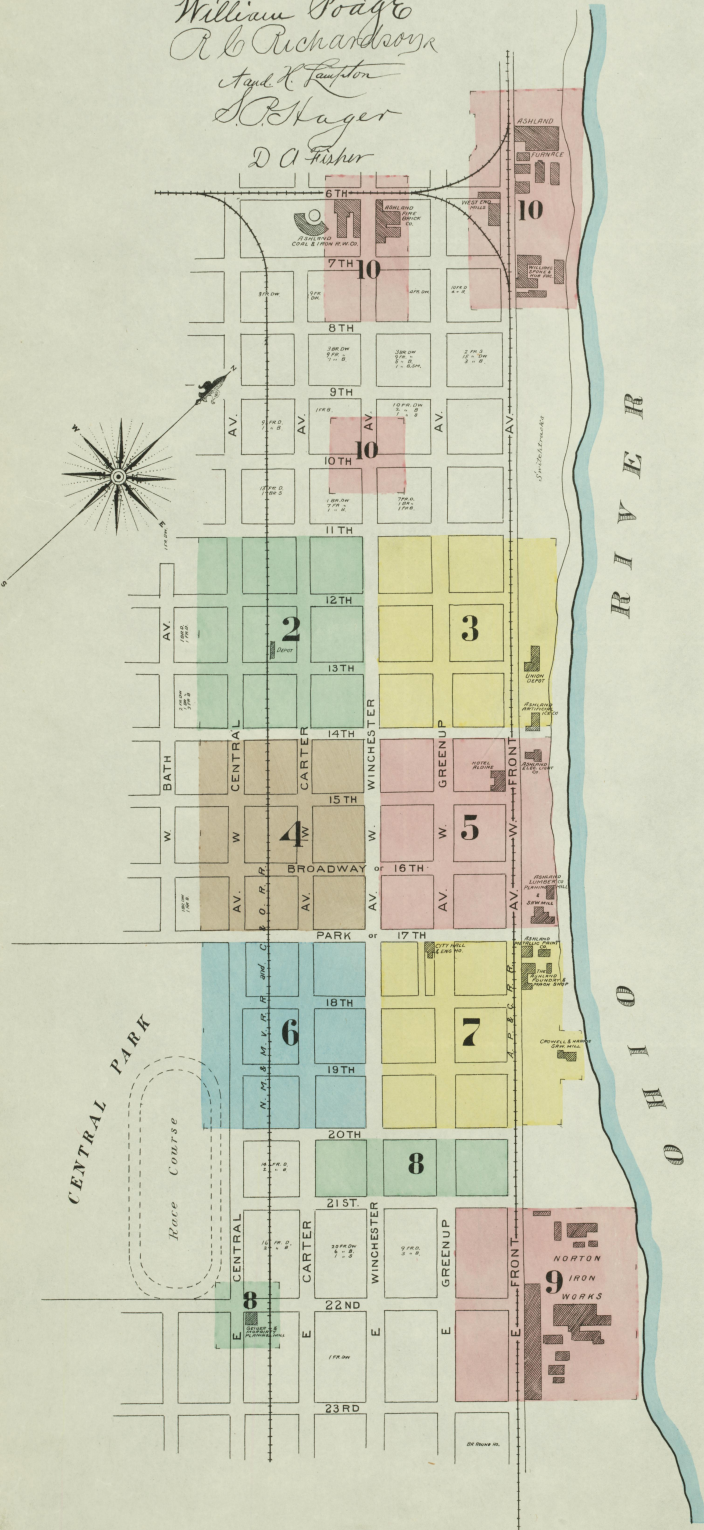
SANBORN-PERRIS MAP CO. LIMITED

117 BROADWAY NEW YORK

Scale 10 ft. to 1 in.

Aug. 1890

Copyright 1890 by the Sanborn-Perris Map Co. Limited



KEY	
(Symbol)	FIRE INSURE RISK AS ROOF
(Symbol)	SHEATHING
(Symbol)	FRAME PARTITION
(Symbol)	OPENING & LAMP DOOR
(Symbol)	WINDOWS - SHUTTERS
(Symbol)	STABLE
(Symbol)	WINDOW 11" STORY
(Symbol)	1 1/2" 2nd "
(Symbol)	3" 4" 6" 8" 10" 12" 14" 16" 18" 20"
(Symbol)	BUILDINGS YELLOW AND FRAME
(Symbol)	BRICK
(Symbol)	STONE
(Symbol)	IRON
(Symbol)	ADOBES
(Symbol)	WOOD
(Symbol)	SPECIALS
(Symbol)	MARKED BY AINE CLOUT LINED
(Symbol)	(*) IRONIC RELATIVE HEIGHTS
(Symbol)	ALTERNATE STREET NOS ARE ACTUAL
(Symbol)	CONJECTIVE
(Symbol)	ARBITRARY
(Symbol)	BROKEN LINE NEAR 8 1/2" - WOOD CORNER
(Symbol)	SOLID
(Symbol)	WEAK

POPULATION
6400

Prevailing Winds, West.

WATER FACILITIES. Water Works being erected, by the Ashland Water Supply Co. Reservoir of 4 Million Gallons Capacity. Elevation 190 above town. 2 Vertical Duplex Pumps (Dodge) Capacity 3 Million Gallons per 24 hours. Water Pipes 4 & 8" diam. 9 Inlets at 11 Paces. 20 Double Hydrants. Average Pressure 85 lbs per Sq. Inch.

FIRE DEPARTMENT Organized Volunteer.
25 Men. 1 Steam Fire Engine. 1 Hook & Ladder Truck. 1700 2 1/2" Hose. (To have additional Hose & Carts).
10 Cisterns, Average Capacity 1000 Bbls.
Streets Graveled. Grades about level.
No recorded Block Nos on the old town.

INDEX.

STREETS.	SEVENTEENTH.	EIGHTEENTH.	NINETEENTH.	POPULATION.	INDUSTRIES.
Broadway, see Sixteenth.	100-224	100-224	100-224	10	Ashland Furnace,
Carter Ave., E.,	100-123	100-123	100-123	5	" Lumber Co's Planing Mill,
" " " "	200-423	200-423	200-423	5	" Metallic Paint Co.,
" " " "	501-523	501-523	501-523	7	" Saw Mill,
" " W.,	100-223	100-223	100-223	5	Baptist Church,
" " " "	300-523	300-523	300-523	7	Catholic Church,
Central Ave., E.,	100-123	100-123	100-123	10	Christian "
" " " "	200-423	200-423	200-423	7	City Hall,
" " " "	501-523	501-523	501-523	7	Crowell & Harris, Saw Mill,
" " W.,	100-223	100-223	100-223	3	Episcopal Church,
" " " "	300-523	300-523	300-523	3	Faulkner's Wagon Shop,
Eighteenth,	100-223	100-223	100-223	4	First Presbyt. Church,
" " " "	200-423	200-423	200-423	8	Geiger & Moriarty, Planing Mill,
Greenup Ave.,	100-123	100-123	100-123	5	German Lutheran Church,
" " " "	200-423	200-423	200-423	5	Herrmann, H., Dimension Factory,
" " W.,	100-223	100-223	100-223	5	Hotel Abline,
Fourteenth,	100-224	100-224	100-224	5	Magnolia Hotel,
" " " "	200-423	200-423	200-423	4	Meth. Episc. Church,
" " W.,	100-223	100-223	100-223	6	" College,
Front Ave., E.,	100-123	100-123	100-123	2	South Church,
" " " "	200-423	200-423	200-423	2	" " " "
" " W.,	100-223	100-223	100-223	9	N. S. & M. V. R. R. Depot,
" " " "	300-523	300-523	300-523	10	Norton Iron Works,
" " " "	600-745	600-745	600-745	2	" " " "
" " " "	900-523	900-523	900-523	10	Public School,
Fifteenth,	100-223	100-223	100-223	4	" " " "
" " " "	200-423	200-423	200-423	4	Republican Printing,
" " W.,	100-223	100-223	100-223	6	" " " "
" " " "	300-523	300-523	300-523	5	Tennant, T. M., Saw Mill,
Greenup Ave., E.,	100-123	100-123	100-123	5	" " " "
" " " "	200-423	200-423	200-423	7	Union Depot,
" " " "	300-523	300-523	300-523	3	" " " "
" " W.,	100-223	100-223	100-223	5	West End Mills,
" " " "	200-423	200-423	200-423	10	Williams, J. D., Hub & Spoke Factory,
Nineteenth,	100-223	100-223	100-223	10	" " " "
" " " "	200-423	200-423	200-423	5	" " " "
" " W.,	100-223	100-223	100-223	10	" " " "
" " " "	300-523	300-523	300-523	7	" " " "
Park, see Seventeenth.	100-123	100-123	100-123	10	" " " "

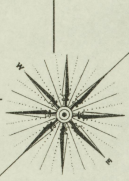
* Indicates only one side of Street shown.

AUG. 1890
ASHLAND
KY.

No. 3.

SHEET

SEE



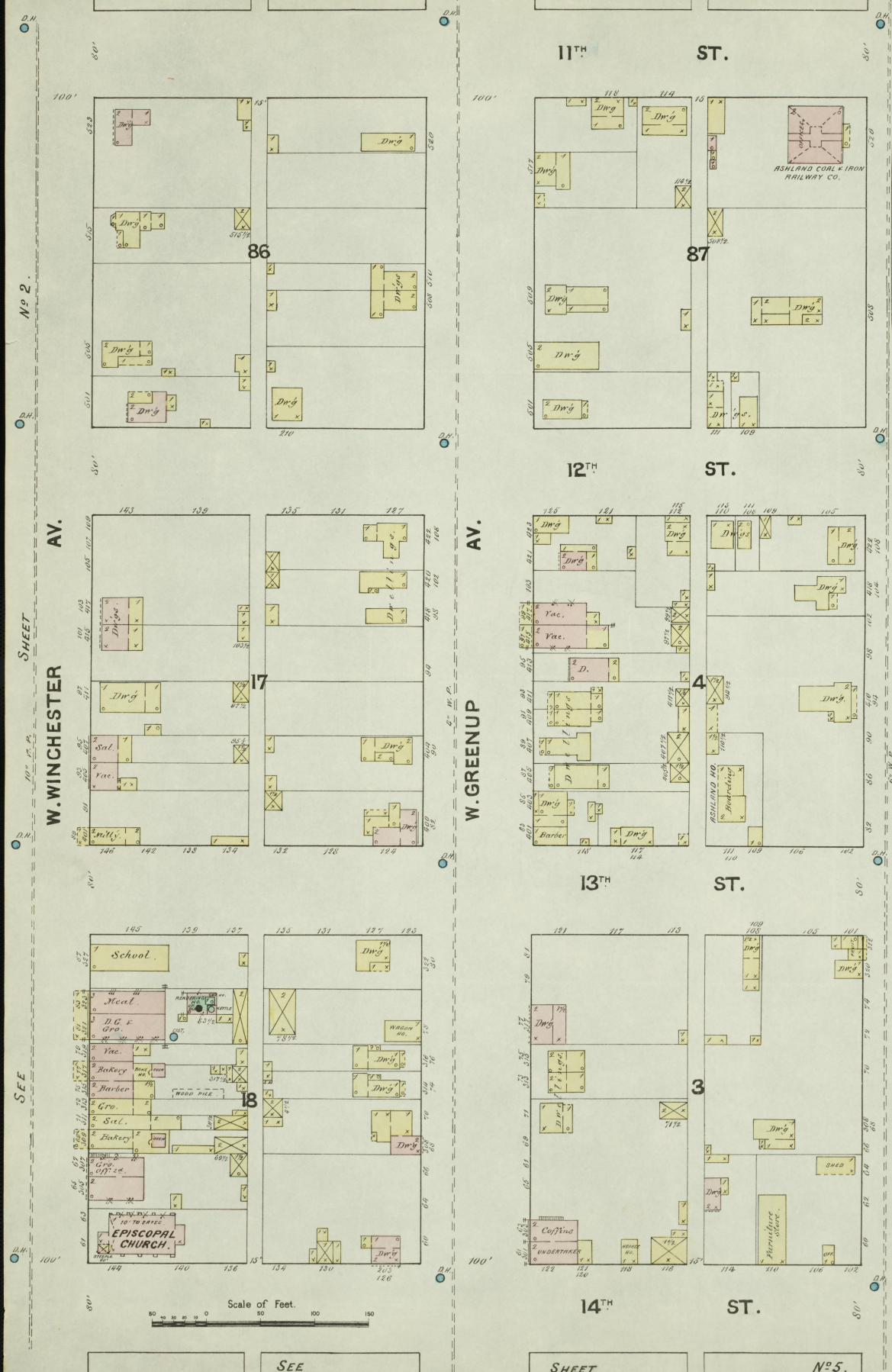
Scale of Feet.
0 50 100 150

SEE

SHEET

No. 4.

Aug. 1890
ASHLAND
KY.



N^o 2.

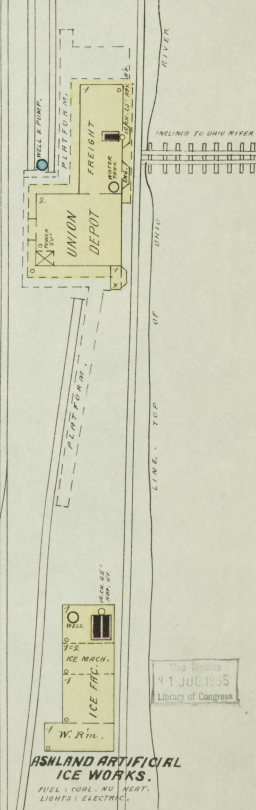
SHEET

SEE

SEE

SHEET

N^o 5.

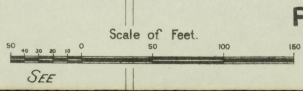
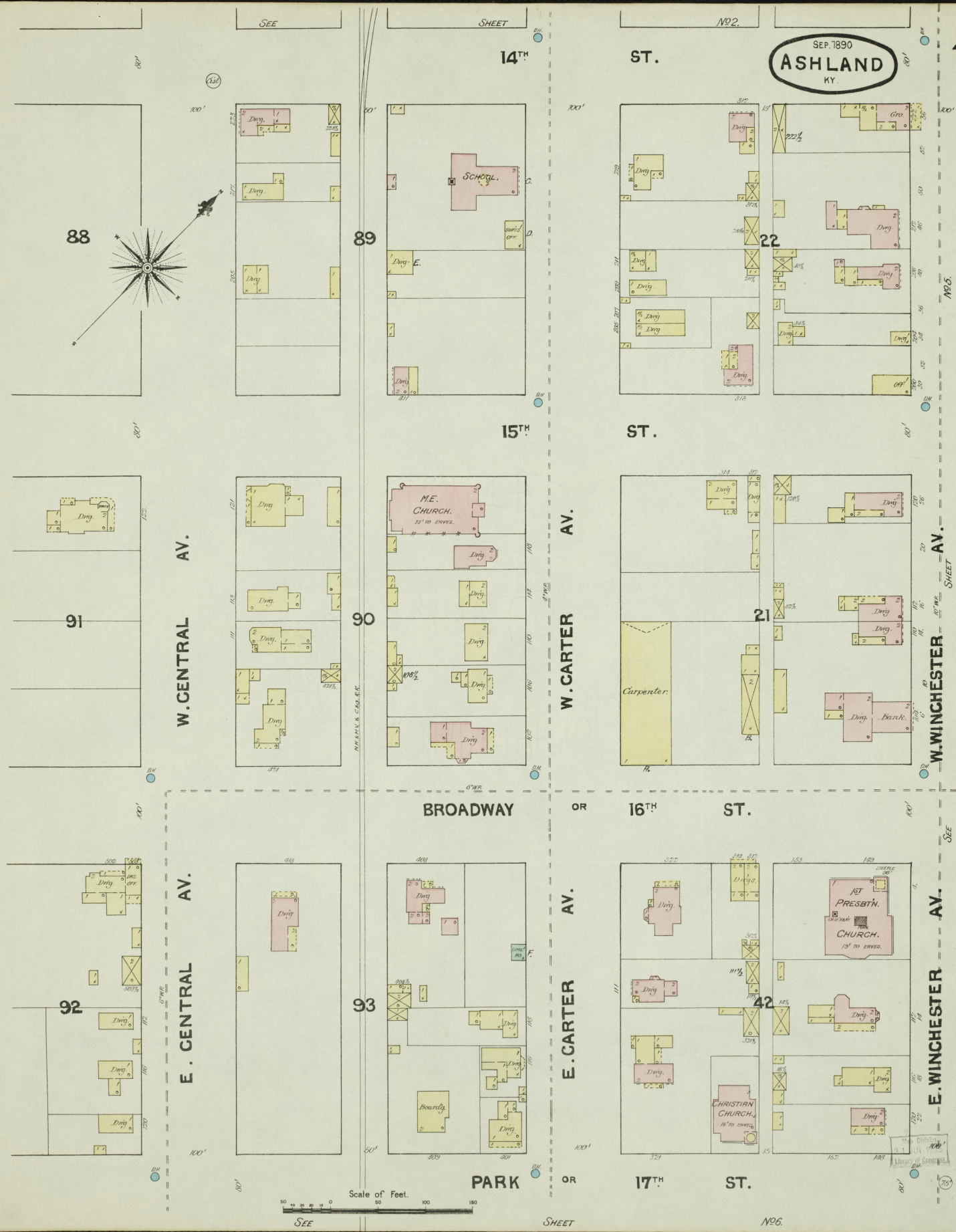
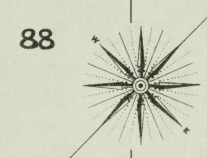


Top Edition
19 JUL 1895
Library of Congress

**ASHLAND ARTIFICIAL
ICE WORKS.**
FUEL TANKS & HEATERS.
LIGHTS: ELECTRIC.

SEP. 1890
ASHLAND
KY.

4



SEE

SHEET

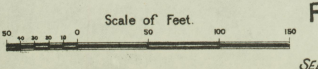
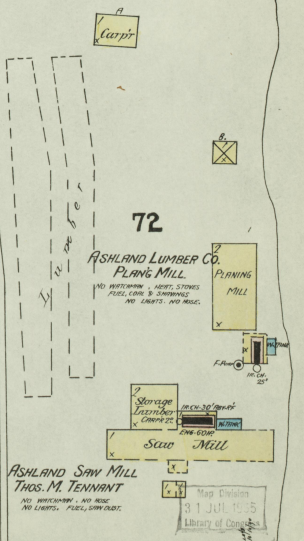
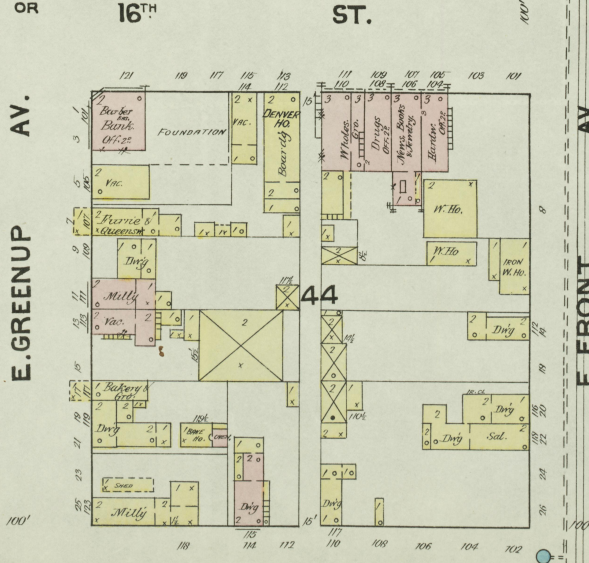
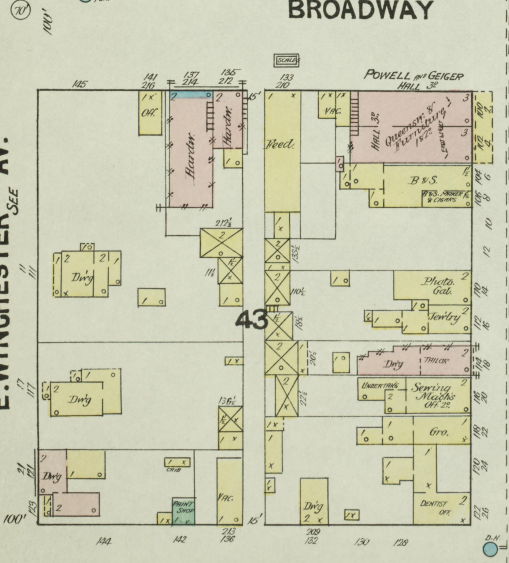
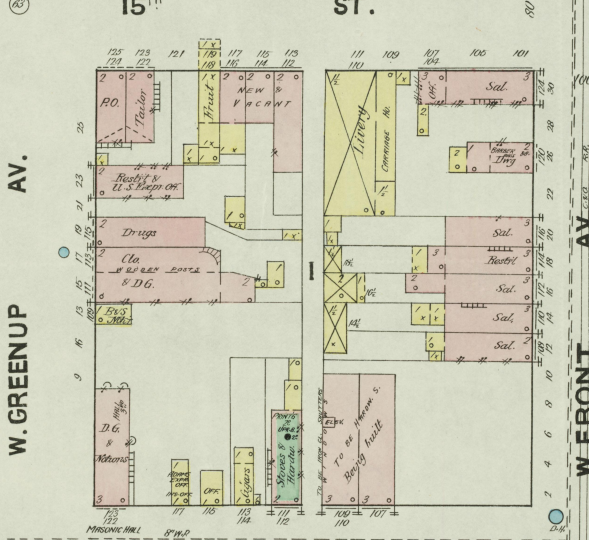
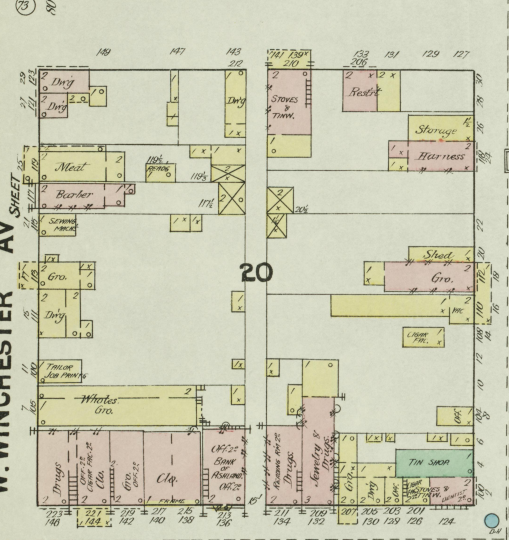
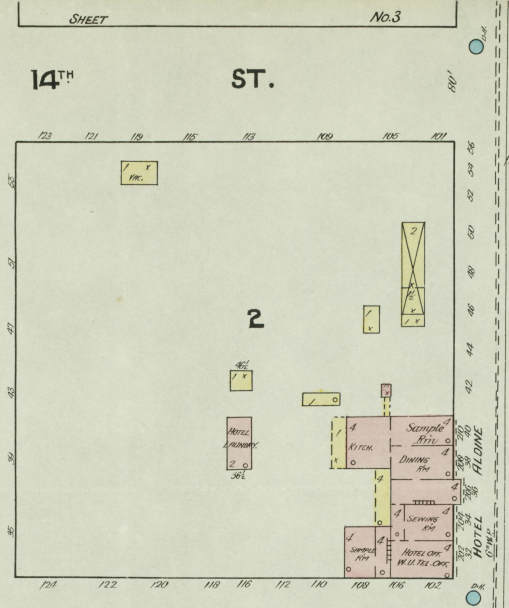
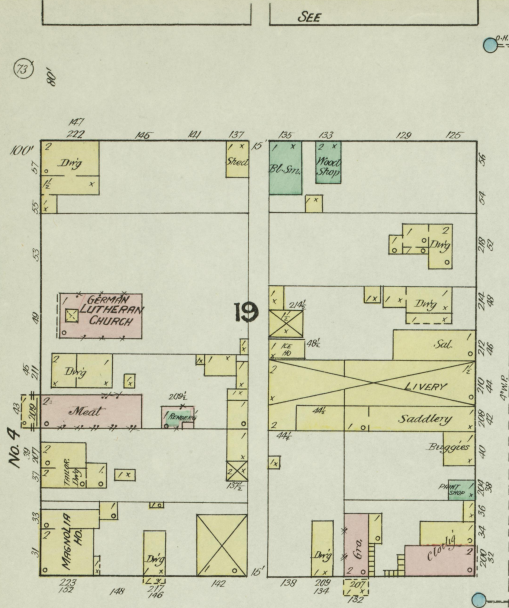
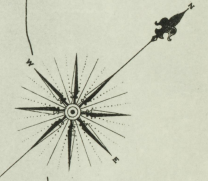
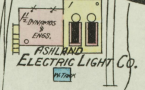
No. 6

SEE

SHEET

No. 5

SEP. 1890
ASHLAND
KY.



Aug 1890
ASHLAND
KY.

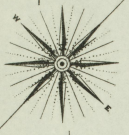
SEE

SHEET

№ 4

PARK OR 17TH

OR 17TH



P
A
R
K

E. CENTRAL AV.

E. CARTER AV.

E. WINCHESTER AV.

94

18TH

ST.

95

19TH

ST.

96

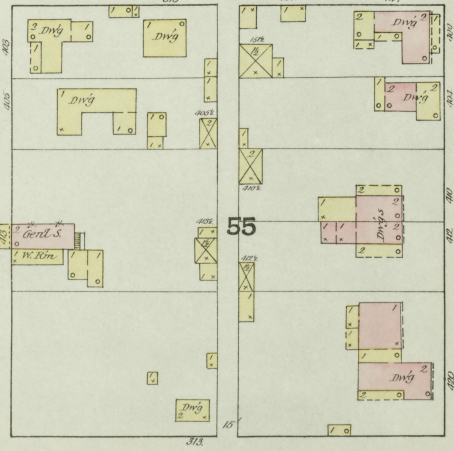
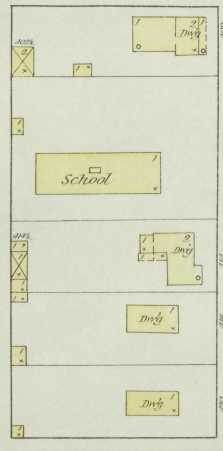
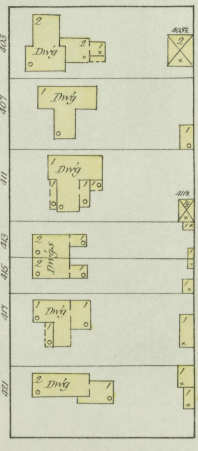
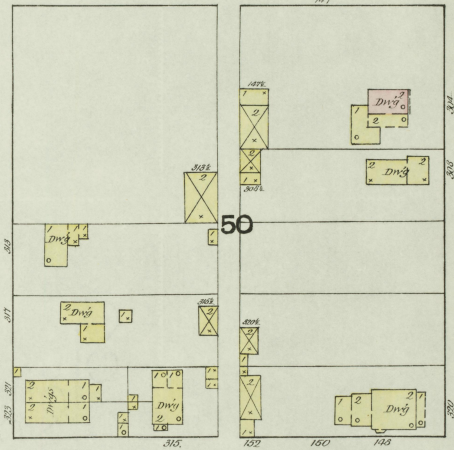
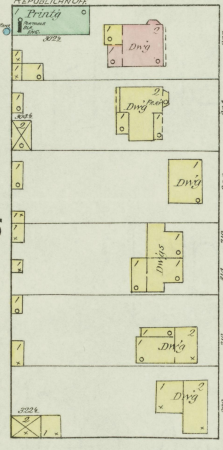
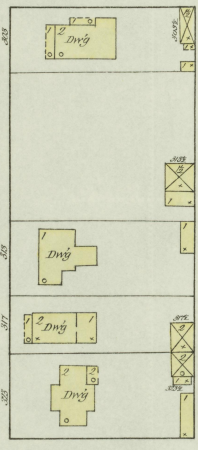
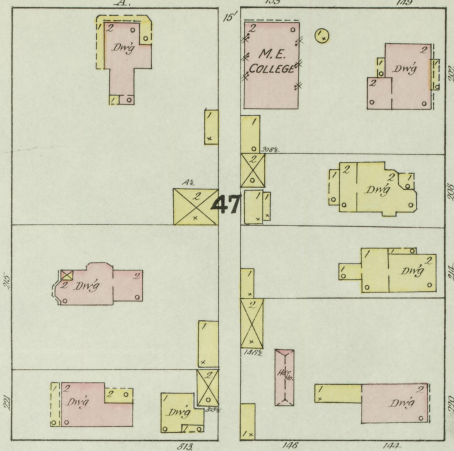
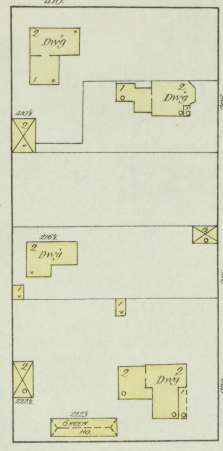
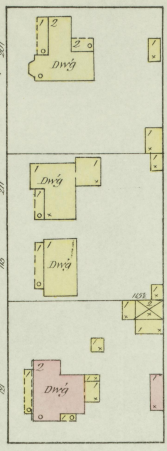
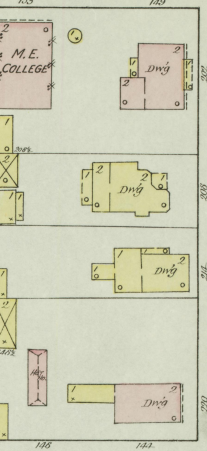
20TH

ST.

47

50

55

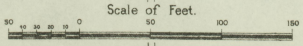


REPUBLICAN Club

School

M. E. COLLEGE

Genl. S. W. Kim



№ 7.

SHEET

SEE

SEE SHEET

№ 8

Map Division
31 JUL 1935
Library of Congress

SEE

SHEET

N95

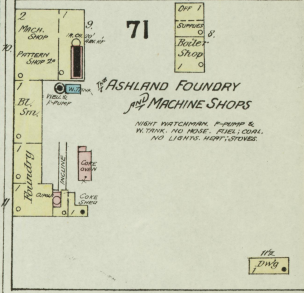
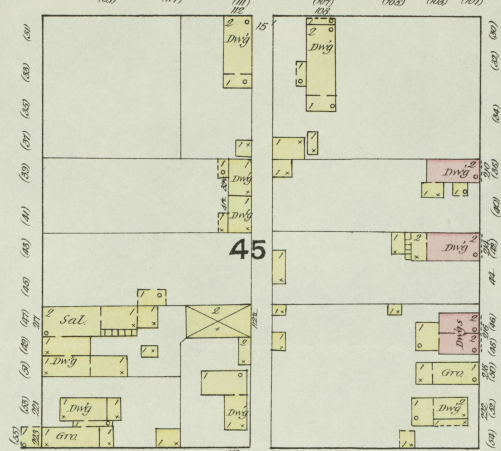
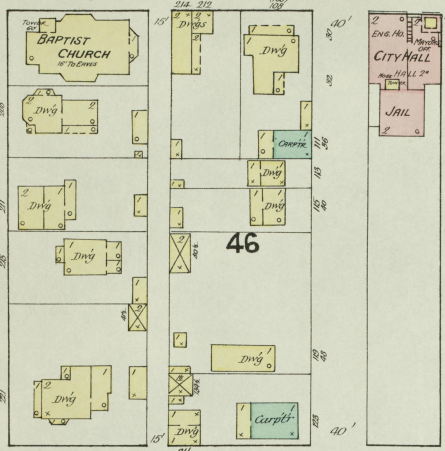
AUG 1890
ASHLAND
 KY.

7

17TH ST.

ASHLAND METALLIC PRINT CO.
 NO PATENTING. NO TRADE MARKS. NO ROSES. FULL COLOR. NO HATS. NO LIGHTS.

ASHLAND FOUNDRY
 & MACHINE SHOPS
 NO PATENTING. NO TRADE MARKS. NO ROSES. FULL COLOR. NO HATS. NO LIGHTS.

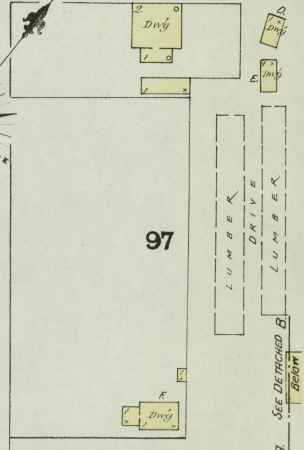
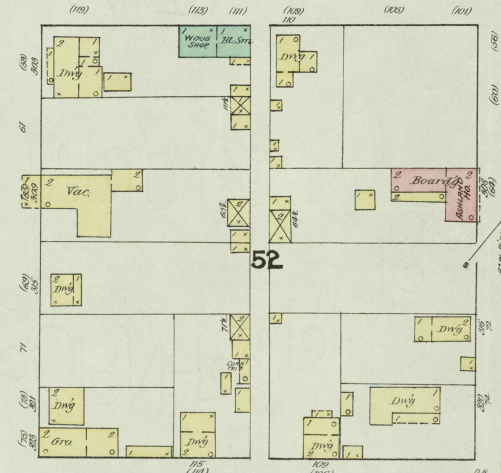
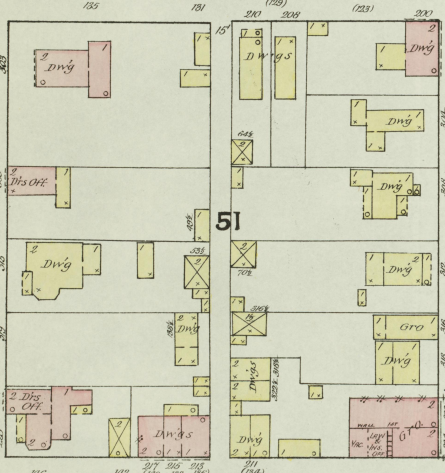


18TH ST.

AV. WINCHESTER

AV. GREENUP

AV. FRONT



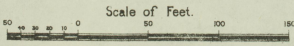
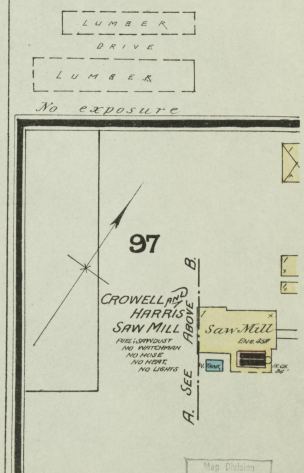
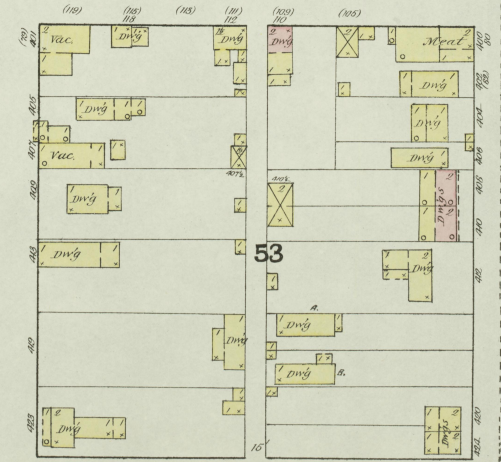
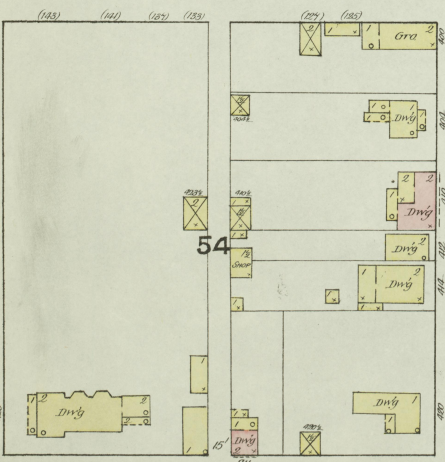
19TH ST.

SEE

20TH ST.

SHEET

N98



SEE

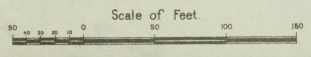
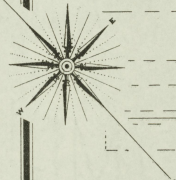
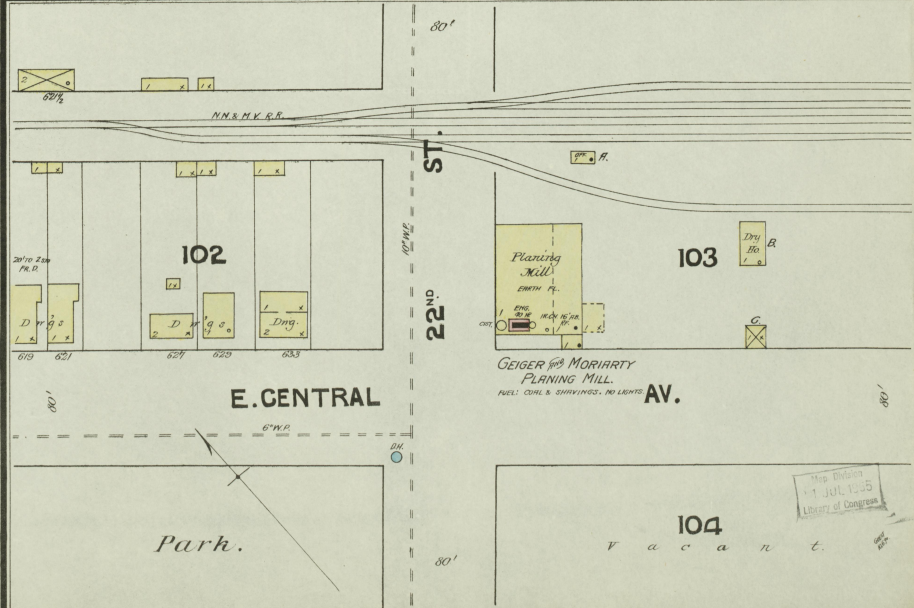
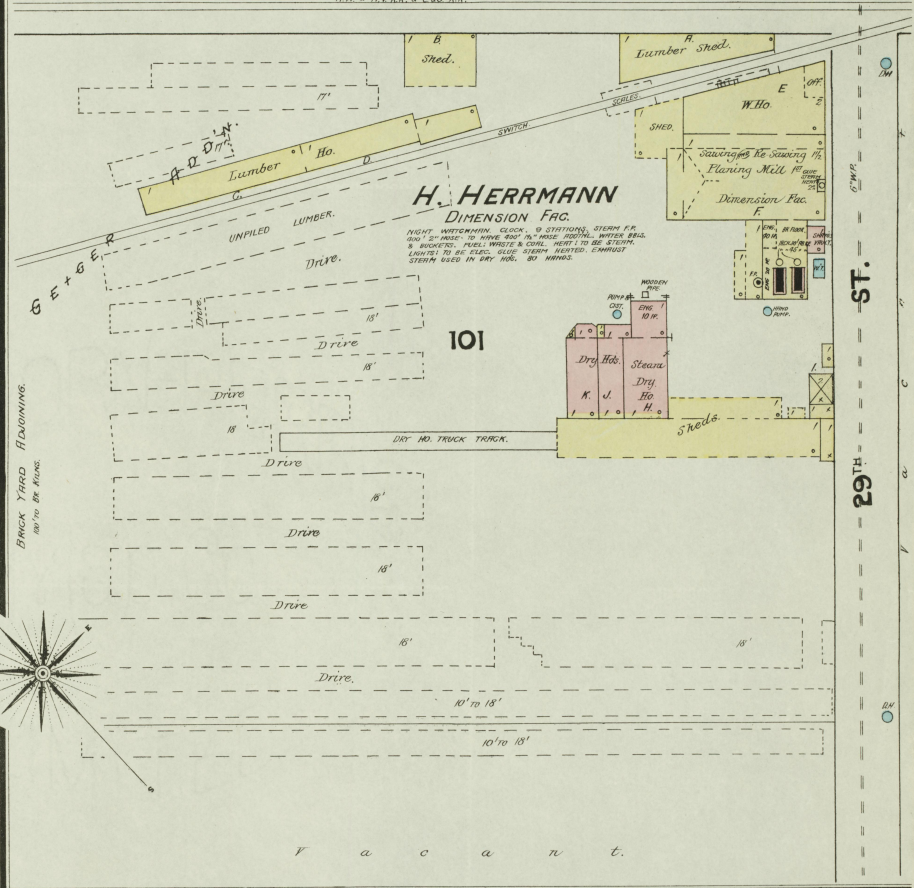
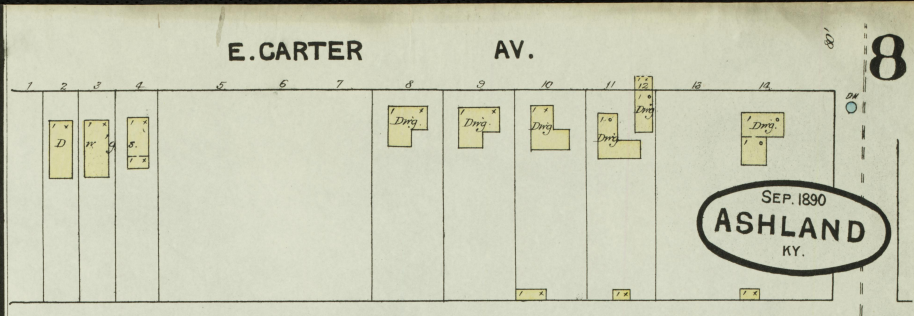
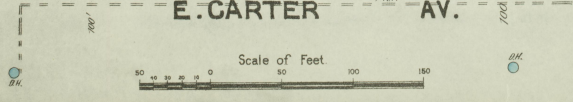
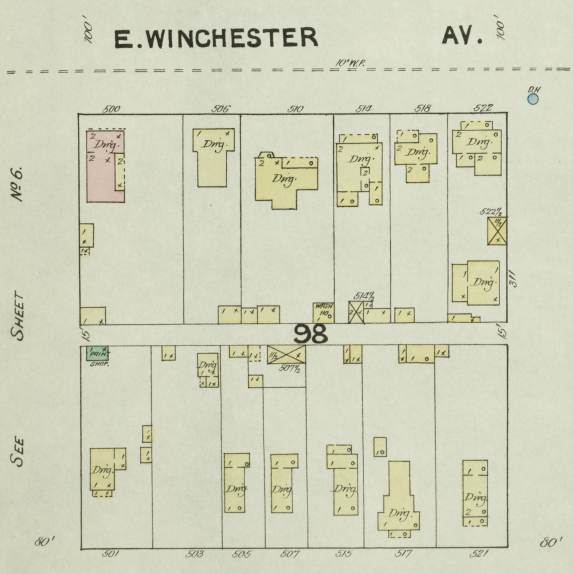
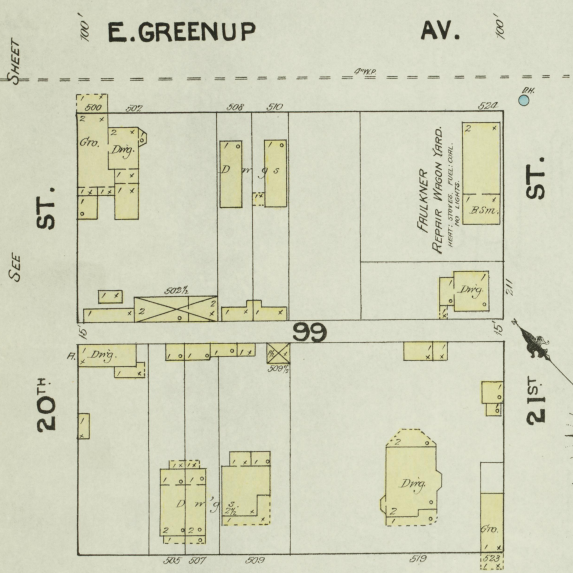
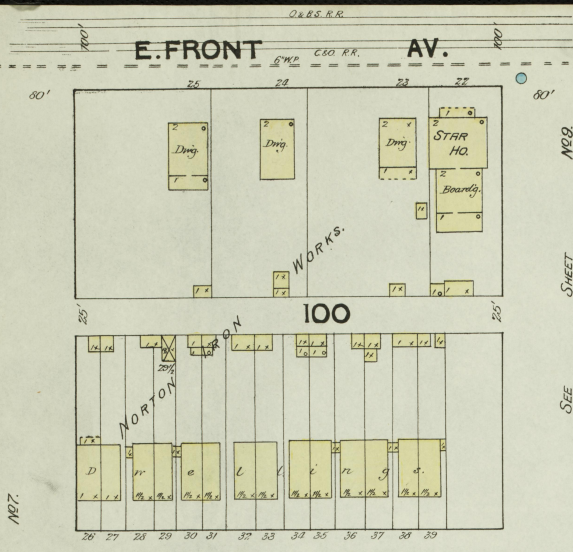
SHEET

No exposure

Map Division
 31 JUL 1935
 Library of Congress

1908

SEP. 1890
ASHLAND
KY.



MP7.

SHEET

SEE

20th ST.

NO 6.

SHEET

SEE

MP9.

SEE

DRUCK YARD

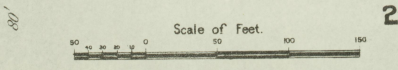
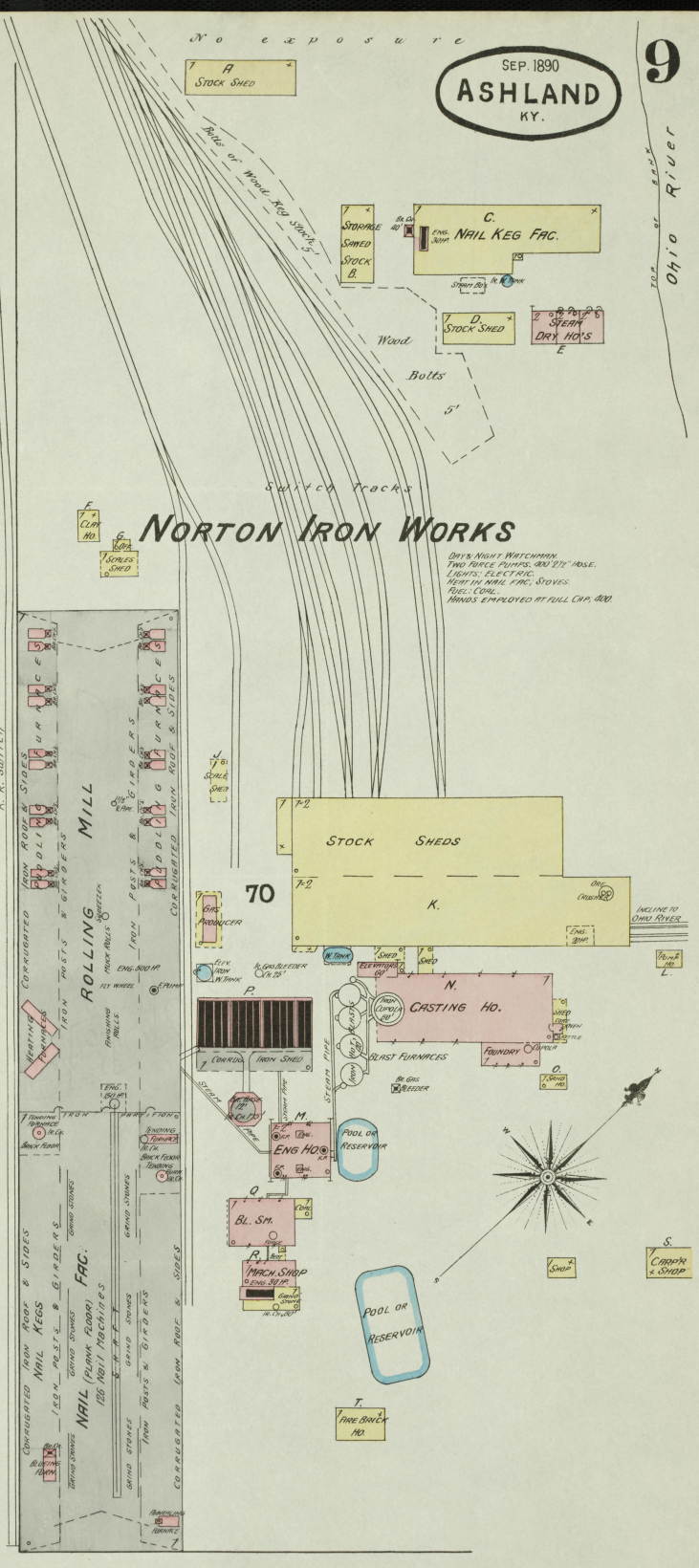
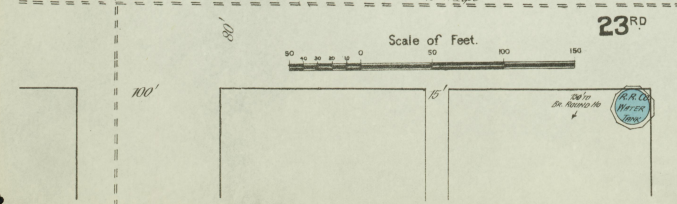
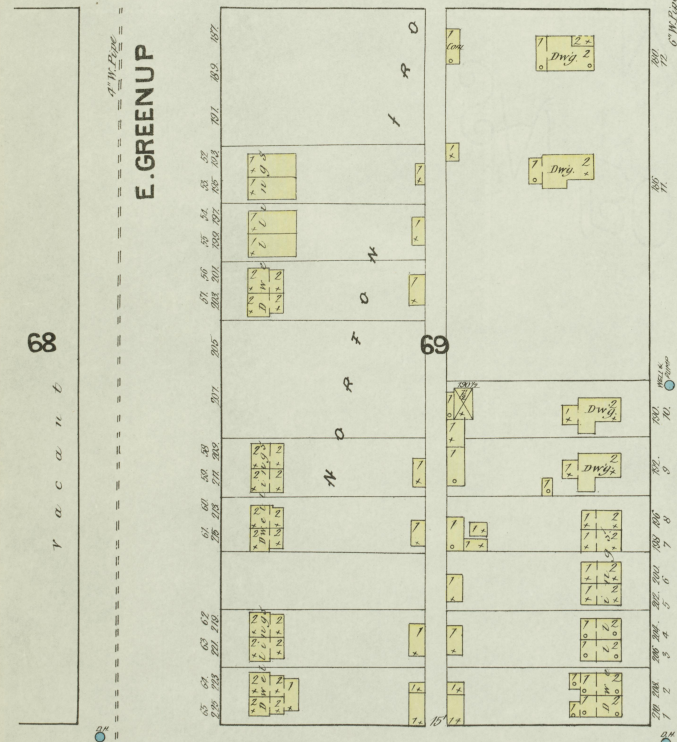
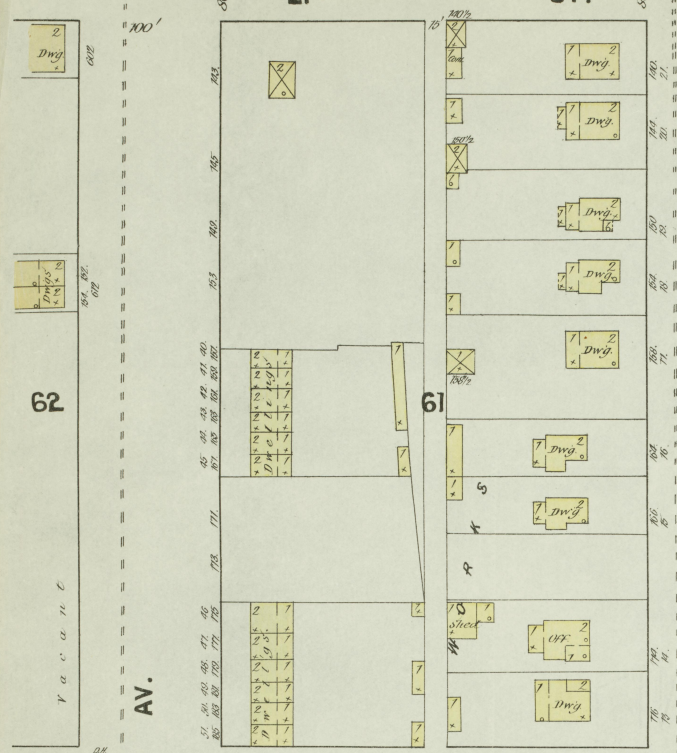
21st ST.

ST.

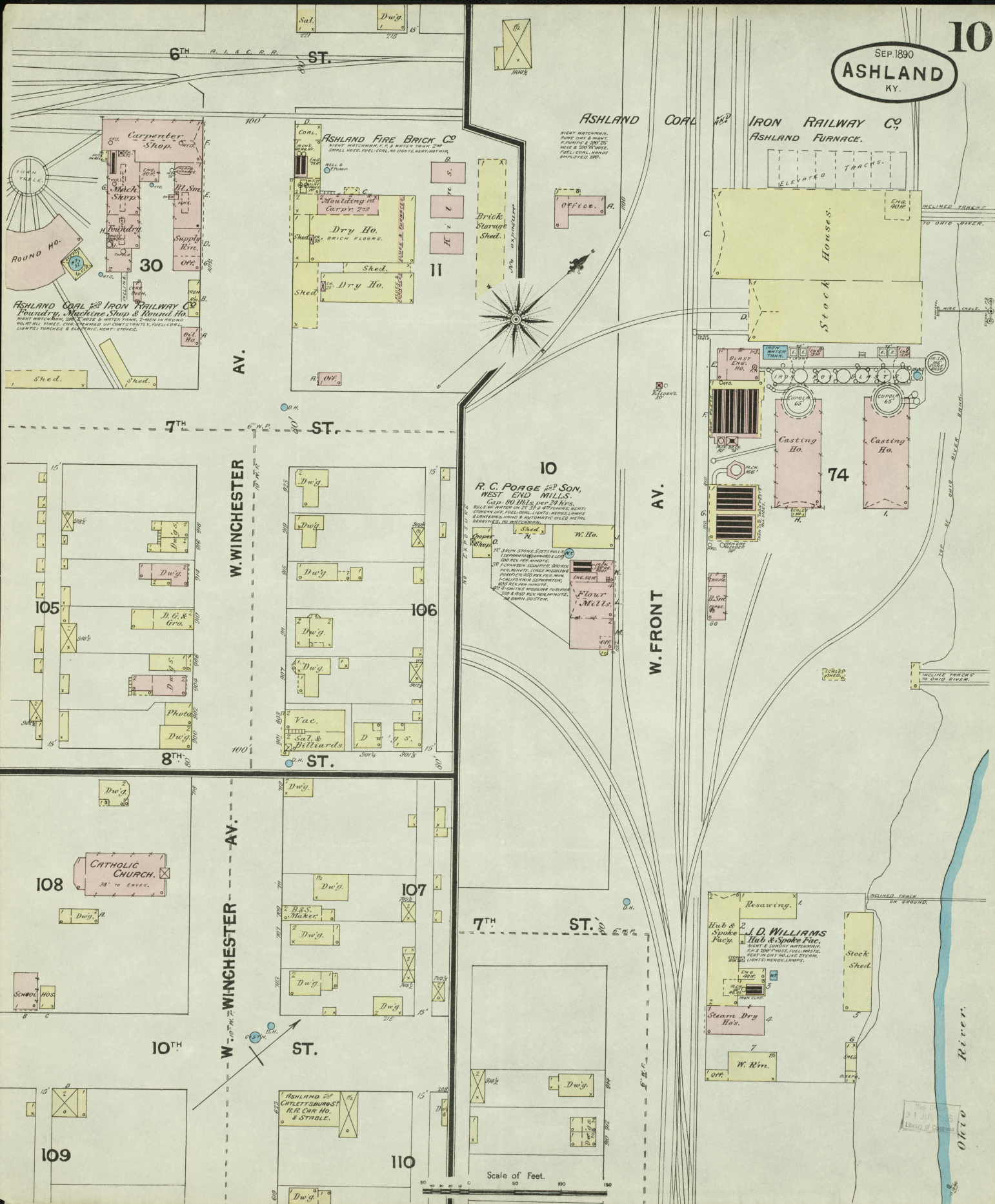
22nd ST.

29th ST.

Map Division
JUL 1905
Library of Congress



Map Division
 9.1 JUL 1905
 Library of Congress



10
R. C. POAGE & SON,
WEST END MILLS.
CAPS: 60 MILLS, PER 24 HRS.
BULLS BY WATER ON ST. 14 & 15 FOUNDRY RIGHT.
STEAM OF FUEL COAL, LIGHTS, MENUS, LUMBER
& CONSUMED, WINDS & MECHANICAL WINDS, WINDS,
MACHINERY, & MECHANICALS.

17' 3" DIA. STEAM SYSTEMS
1500 RPM (3000 RPM) 1500
ONE REV. PER MINUTE.

38' COMMON SLOTTED, DRINK
PER MINUTE, LONG WINDING
POWER ON 150 PER REV. MIN.
1500 RPM (3000 RPM) 1500
300 REV. PER MINUTE.

15' 2" DIA. STEAM SYSTEMS
1500 RPM (3000 RPM) 1500
ONE REV. PER MINUTE.

W. Ho.
Flour Mills

Resawing.
Hub & Spoke
Fac.
J. D. WILLIAMS
Hub & Spoke Fac.
WIND & SAWMILL MATCHES,
ONE 2" DIA. HULLS, ONE
HULL IN ONE HULLS, ONE
LIGHTS, MENUS, LUMBER.

Stock Shed
W. Rm.

Scale of Feet.
0 50 100 150

Ohio
Library of Congress