

copy 2

KENTUCKY VS GEORGIA



STOLL FIELD • OCTOBER 28, 1967 • OFFICIAL PROGRAM • 50c Est. Price .48
Tax02

DAWAHARE'S located in

- LEXINGTON
- WHITESBURG
- PIKEVILLE
- HAZARD
- NEON
- CORBIN

Gardenside Plaza



PLENTY FREE PARKING

STORE HOURS — 10 a.m. 'til 9 p.m.
Monday thru Saturday



PURCELL'S . . . Central Kentucky's
 Leading Department Store Since 1887!

"The WILDCAT"

By

WINTHROP 
 SHOES FOR MEN

Purcell's Shoe Center . . . your headquarters for these fine quality men's shoes fashioned by WINTHROP. Fashion-perfection and comfort combined in your choice of the "Wildcat" slip-on loafer . . . or oxfords.



Above:

The "WILDCAT" LOAFER

- BLACK
- BROWN
- CORDO

\$16⁹⁵
 pair



Left:

The "WILDCAT" OXFORD

- BLACK
- BROWN

\$19⁹⁵
 pair

SHOE CENTER — MAIN FLOOR

Purcell's

Always Shop Purcell's for Your Family . . . Your Home . . . Yourself!

OFFICIAL WATCH FOR THIS GAME



LONGINES

THE WORLD'S
MOST HONORED
WATCH®

10 world's fair grand prizes
28 gold medals



Longines watches are recognized as OFFICIAL for timing world championships and Olympic sports in all fields throughout the world.



Longines Ultra-Chron #8205, automatic with calendar, \$175.
Other Ultra-Chron Models, \$150 to \$595.

the fabulous new LONGINES ULTRA-CHRON

Guaranteed Accurate To A Minute A Month

The ultimate personal chronometer, guaranteed accurate to a minute a month—a mean average of 2 seconds per day. Ultra-Chron tells the date, hour, minute, second. Never needs batteries. Winds automatically while you wear it. All-Proof® construction defeats water, dust, shock, magnetism. At Longines-Wittnauer Franchised Jewelers, coast-to-coast.

LONGINES-WITRNAUER WATCH CO.
MONTREAL • NEW YORK • GENEVA
Maker of Watches Of The Highest Character
For Over A Century

OFFICIAL UK FOOTBALL PROGRAM

CONTENTS

	Page
Game Story	5
Governor Breathitt	6
Songs	8
President Oswald	9
Cheerleaders	10
Athletics At Kentucky	11
Athletics Director Shively	12
Varsity Schedule and Scores	14
Coaching Staff	15
Head Coach Bradshaw	16
Kentucky Player Pictures	18, 22, 26, 30, 34, 38
Georgia Player Pictures	20, 33
Statistically Speaking	24
Numerical Rosters	28
Lineups	Center Spread
Depth Chart	29
Georgia Administration	37
My Daddy's Not a Football Coach	40
What Opponents Are Doing	42
Meet The Kittens	43
UK Alphabetical Roster	44
UK-Georgia Series History	46
Preview of Coming Attractions	46
Homecoming—1967	47
Band	49
Wildcat Coaches—Athletics Staff	50
UK Library Ranks in Top 25	54
Kentucky Basketball	54

OFFICIAL 1967 SOUVENIR FOOTBALL PROGRAM

Published by U.K. Athletics Association
Bernie A. Shively, Director of Athletics

Edited by Ken Kuhn
Director of Sports Information

Represented for National Advertising by
Spencer Advertising, Inc.
271 Madison Avenue, New York, N. Y.

Wildcat Gridiron News

KENTUCKY vs. GEORGIA

Charlie Bradshaw's depleted Kentucky forces return to home territory tonight seeking a first victory of the season and there couldn't be a more worthy foe than Vince Doolley's nationally-ranked Georgia Bulldogs.

The invaders from Athens, ranked sixth and eighth this week in UPI and AP polls, respectively, are fresh from a 56-6 trouncing of VMI and have only one loss (Ole Miss) at the midseason mark.

The Wildcats, winless in five games against foes who have a combined record of 23-3, suffered another big blow Saturday night when tailback Roger Gann received a knee injury while covering a punt return.

Gann, who carried 18 times for 53 yards in the 30-7 loss to the Tigers, was the Wildcats' leading ground gainer with 245 yards in 66 carries for a 3.7 average. He underwent a knee ligament operation and is lost for the season.

Loss of Gann in a backfield already riddled with injuries has resulted in some reshuffling of personnel.

Dicky Lyons, who missed all but one play of the VPI game two weeks ago after receiving a rib cartilage injury in the first half against Ole Miss, saw limited action at quarterback against LSU, but made his presence felt with a thrilling, 95-yard kickoff return at the opening of the second half.

Lyons, a tailback converted to quarterback when sophomore signal caller Stan Forston received a knee injury in pre-season practice, is back at his old position and will be sharing duties with sophomore Dick Beard and senior Tom Fee.

Scheduled to see more action at quarterback is sophomore David Bair, who has completed 16 of 40 passes for 190 yards and gained 39 yards in five carries from scrim-

mage. He has been alternating with senior Terry Beadles this week.

Kentucky also did some reshuffling prior to last year's Georgia game at Athens as Coach Bradshaw sought to strengthen an offensive attack which had scored only 27 points in five games. Involved in the move was Lyons, who started his sophomore season as a defensive back.

The Wildcats immediately made their new offensive look felt as Beadles hit Larry Seiple on a 33-yard touchdown pass to the Georgia six and then passed to Seiple on third down for the game's first touchdown.

Kirby Moore, who'll be in action against the Wildcats again tonight, set up Georgia's first score with a 47-yard punt downed at the UK one by Hardy King. Steve Woodward returned the ensuing punt 10 yards to the UK 31. Moore scored from the three and Bob Etter tied it, 7-7.

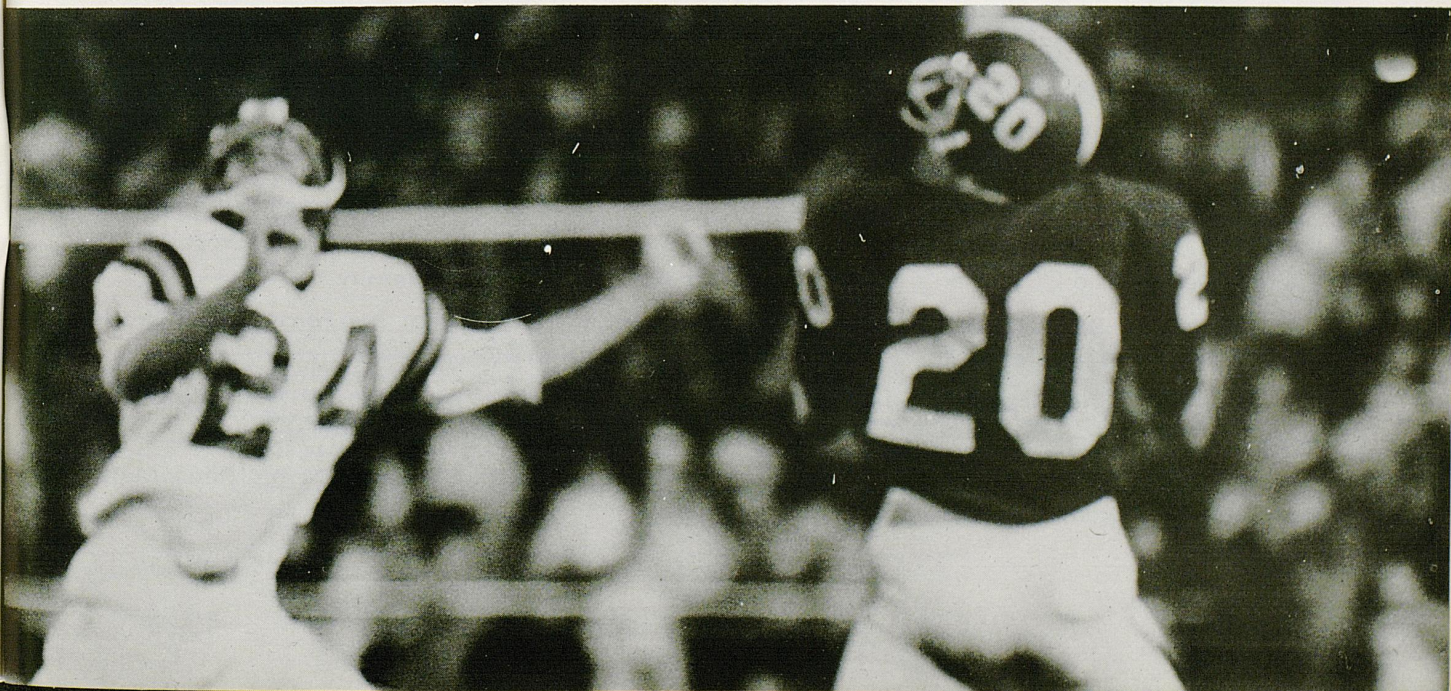
The Bulldogs went ahead, 14-7, on a Moore to Bill Payne pass for a 13-yard touchdown in the second quarter but Kentucky came rolling back as Jeff Van Note blocked an Etter field goal try in the third quarter and John Harris returned 62 yards to the four. Beadles ran over from the three and passed to Seiple for a two-point conversion to put UK ahead, 15-14.

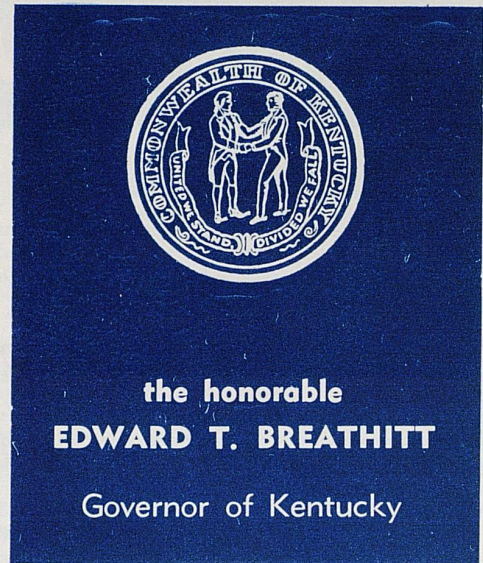
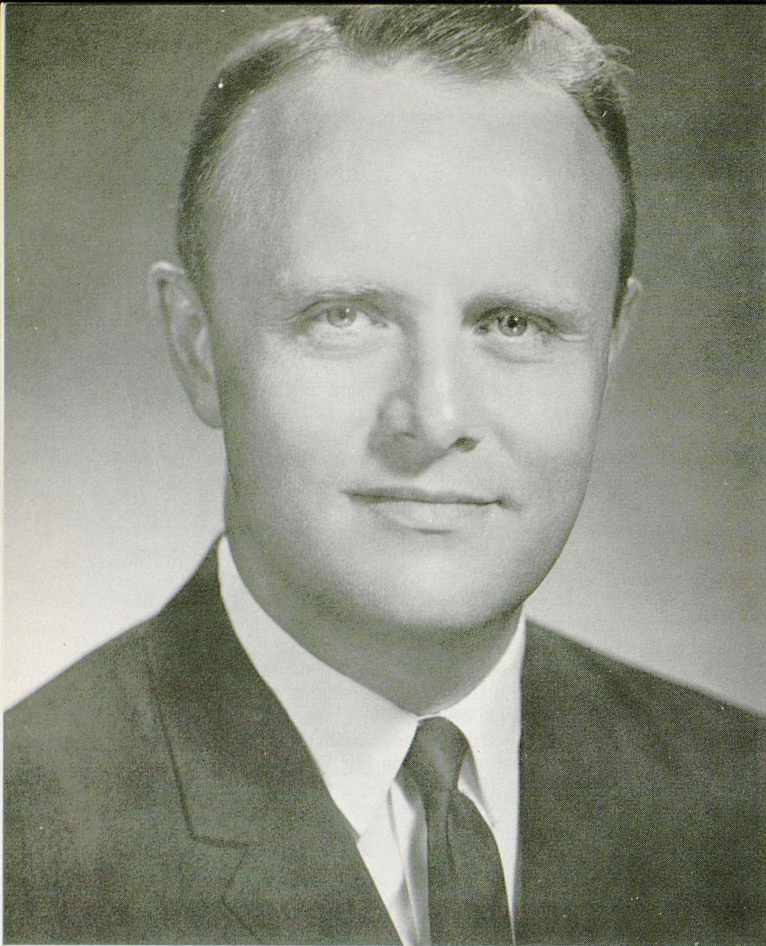
Lynn Hughes came in from safety to replace an injured Moore at QB and sparked a 66-yard drive, scoring from the 10 himself. Hughes then passed to Sandy Johnson on a two-pointer to put Georgia out front, 22-15.

Etter later kicked a 34-yard field goal to make it 25-15, and a safety was added when Beadles was thrown for a 13-yard loss in the end zone.

The victory gave the Bulldogs a 13-5-2 edge in a series which began in 1939 between the two universities. The Wildcats last won two years ago, when Rick Norton passed Bradshaw's forces to a 28-10 victory on Stoll Field.

THINGS WERE LOOKING ROSY—Kentucky partisans came to life in the Virginia Tech game a couple of weeks ago when a pair of sophomores, quarterback Dave Bair and wingback Joe Jacobs (20) teamed up to score a second TD that left UK trailing by just seven points. In the action photo, Jacobs gets behind Ron Davidson to make a spectacular, 41-yard catch.





Alumnus Governor Boosts Wildcat Gridders . . .

Edward T. Breathitt, at 42, is the nation's second youngest Governor. A Hopkinsville attorney, he continues a family record of distinguished public service that dates back to pre-Civil War days when an ancestor, John Breathitt, served as the state's chief executive.

Governor Breathitt, who in his capacity as Governor, also serves as chairman of the University of Kentucky Board of Trustees, began his career as a lawyer and public servant immediately upon graduation from the University of Kentucky College of Law in 1950. At the age of 27, he was elected to the State House of Representatives. Later he was State Personnel Commissioner and a member of the State Public Service Commission before being elected to Kentucky's highest office in 1963. Unable to succeed himself, he is in the final months as the state's chief executive.

While a student at the University of Kentucky, where he also obtained a degree in Commerce, he proved his capacity for leadership. While there, he was president of Lamp and Cross, senior men's honorary, and ODK, men's leadership and scholarship honorary fraternity.

His distinguished background also includes three years in the Army Air Force during World War II and the state presidency of the Young Democratic Clubs of Kentucky.

A native of Hopkinsville, he is married to the former Frances Holleman of Mayfield. They have four children—Mary Fran, who is 17; Linda, 16; Susan, 10; and Edward III, who is 8.

Governor Breathitt continues to be one of the most enthusiastic boosters of his Alma Mater and its football team.

the Wildcat Bank

FOR YOURSELF
OR FOR GIFTS

Hand painted in full color with Kentucky blue and white. Unusual bank that fans young and old will enjoy. Now available at all seven of our convenient locations. \$1.25

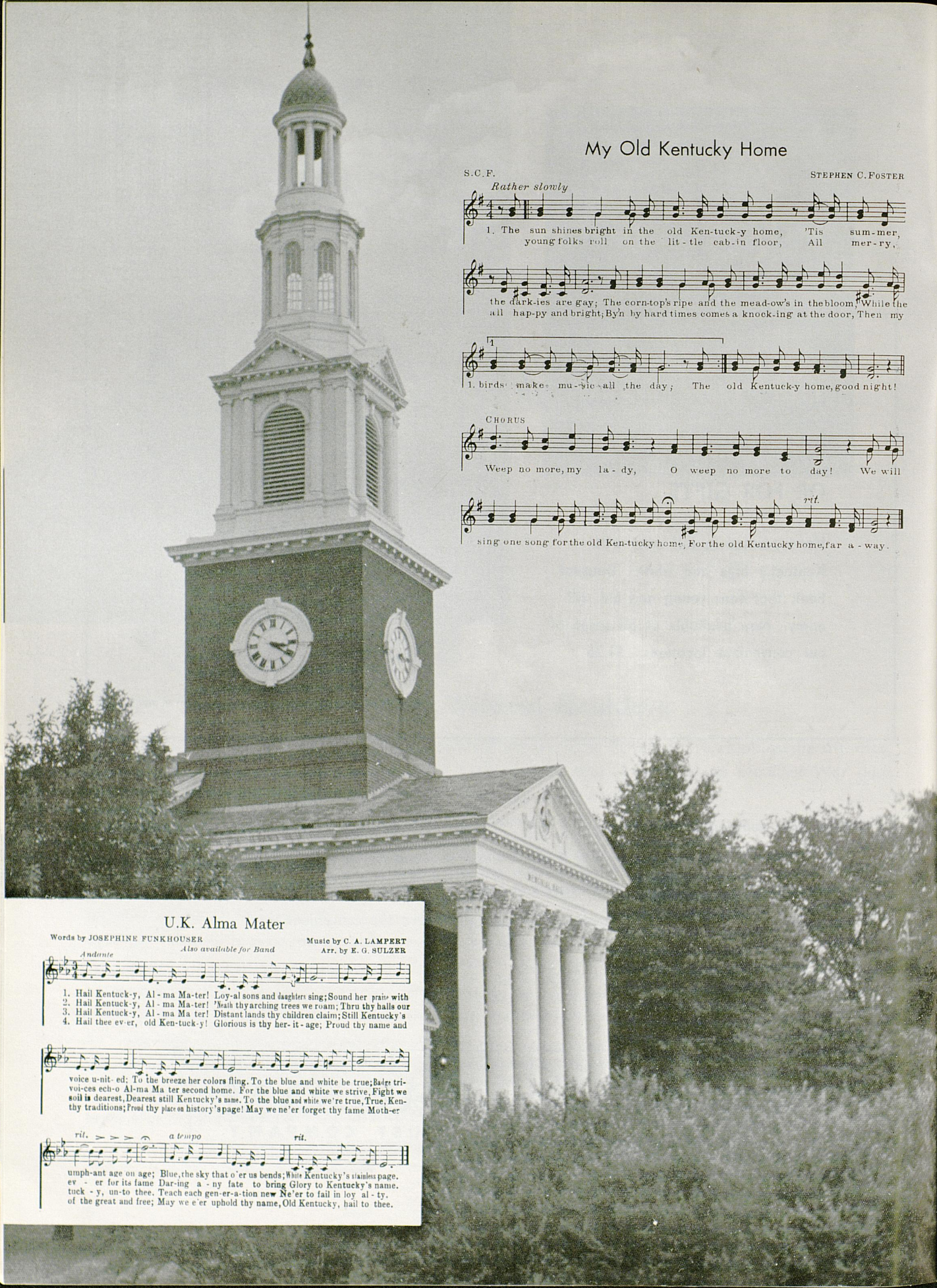


The most convenient place in town to save! Put your change in a Wildcat bank . . . put your savings in First Security where it now earns 4% compounded QUARTERLY. No pass book necessary . . . go to any of 47 tellers at seven locations, including four with drive-in windows. You receive a savings statement quarterly. Save the convenient way!

First Security
NATIONAL BANK AND TRUST COMPANY

Member FDIC

Member Federal Reserve System



My Old Kentucky Home

S.C.F.

STEPHEN C. FOSTER

Rather slowly

1. The sun shines bright in the old Ken-tuck-y home, 'Tis sum-mer,
young folks roll on the lit-tle cab-in floor, All mer-ry,

the dark-ies are gay; The corn-top's ripe and the mead-ow's in the bloom; While the
all hap-py and bright; By'n by hard times comes a knock-ing at the door, Then my

1. birds: make mu-sic all the day; The old Kentucky home, good night!

CHORUS

Weep no more, my la-dy, O weep no more to day! We will

sing one song for the old Ken-tucky home. For the old Kentucky home, far a-way.

U.K. Alma Mater

Words by JOSEPHINE FUNKHOUSER

Music by C. A. LAMPERT

Also available for Band

Arr. by E. G. SULZER

Andante

Musical notation for the first line of the U.K. Alma Mater score.

1. Hail Kentuck-y, Al-ma Ma-ter! Loy-al sons and daughters sing; Sound her prin-cipal with
2. Hail Kentuck-y, Al-ma Ma-ter! 'Tis th' arching trees we roam; Thru thy halls our
3. Hail Kentuck-y, Al-ma Ma-ter! Distant lands thy children claim; Still Kentucky's
4. Hail thee ev-er, old Ken-tuck-y! Glorious is thy her-it-age, Proud thy name and

Musical notation for the second line of the U.K. Alma Mater score.

voice u-nit-ed; To the breeze her colors fling. To the blue and white be true; Bad ge-tri-voles ech-o Al-ma Ma-ter second home. For the blue and white we strive, Fight we soil is dearest; Dearest still Kentucky's name. To the blue and white we're true, True, Ken-ty traditions; Proud thy place on history's page! May we ne'er forget thy fame Moth-er

Musical notation for the third line of the U.K. Alma Mater score, including tempo markings *rit.*, *a tempo*, and *rit.*

ump-hant age on age; Blue, the sky that o'er us bends; White Kentucky's stainless page. ev-er for its fame Dar-ing a - ny fate to bring Glory to Kentucky's name. tuck - y, un-to thee. Teach each gen-er-a-tion new Ne'er to fail in loy-al-ty. of the great and free; May we e'er uphold thy name, Old Kentucky, hail to thee.



JOHN W. OSWALD
President
University of Kentucky



University's President Knows Value of An Athletic Program . . .

When Dr. John W. Oswald became the sixth president of the University of Kentucky on Sept. 1, 1963, he brought to the position most unique qualifications that have since aided immeasurably in his administration of one of the nation's foremost and fastest-growing educational institutions.

John Oswald's background reflects the highest standard of excellence in educational preparation and also includes experience in athletics at both the player and coach levels.

The background of this 50-year-old educator, who took a firm grip on the presidential reins of Kentucky's state university four years ago, almost uniquely qualifies him for leadership of an outstanding institution now well into its second century.

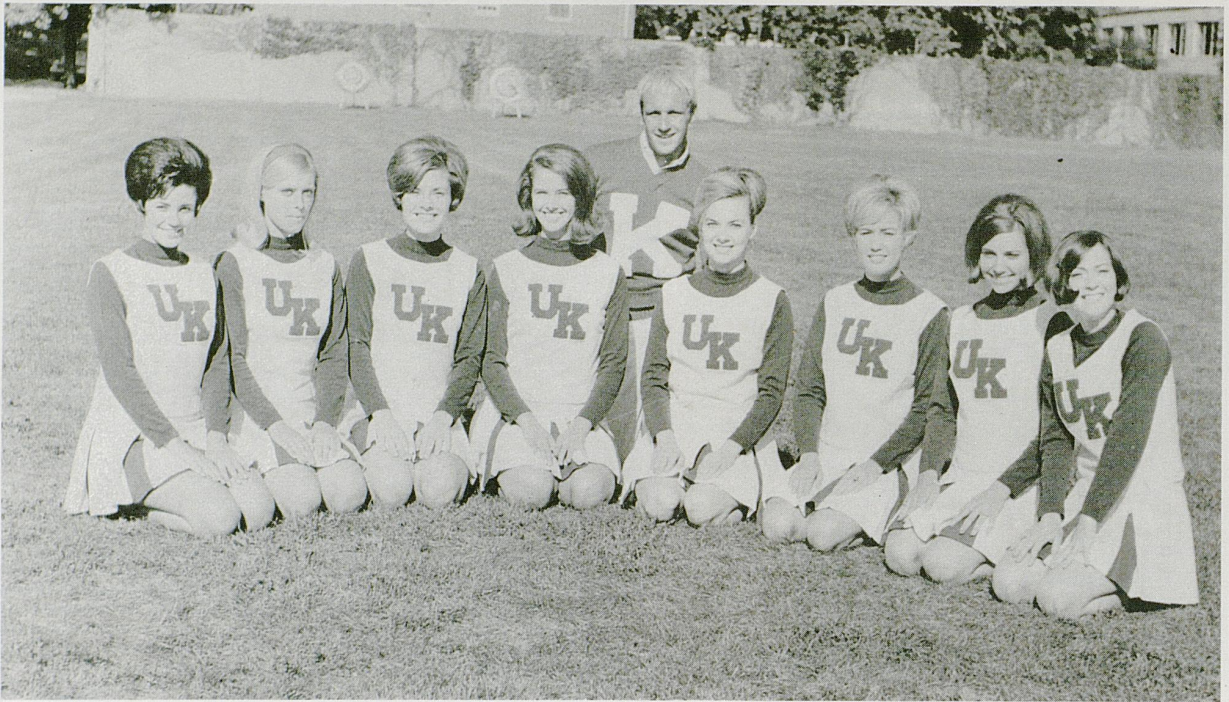
Following a World War II stint in the Navy as a PT boat captain and division commander, he returned to UC as a professor in his special field

and later rose through the administrative ranks to the position of Vice-President for Administration.

Dr. Oswald's athletic experience, that now stands him in good stead as president of a university boasting an ambitious athletic program, came as a player in his collegiate days at De Pauw as he played guard on the football team for three years and later at California's Davis campus—where he tried his hand at coaching (by avocation) the grid team for a brief period.

In 1962, he was named by Sports Illustrated on its Silver Anniversary All-America team, composed of former football players who achieved special prominence in their chosen professions.

Dr. Oswald is a staunch supporter of Kentucky's athletic teams and advocates a fair-minded approach that lends proper emphasis to the athletic program. UK athletics flourish within the proper perspective as an equal part of the total university.



Posing prettily in their new mini-skirt uniforms with the lone male of the contingent are the nine coeds making up the 1967 corps of UK cheerleaders who will make it their goal to pep up the Wildcats. Often unappreciated for their efforts, this year's squad includes Steve Weismueller and Misses Suzanne Huffines, Cheryl Hughes, Winnie Jo Perry (team captain), Jennifer Burcham, Gwynn Deal, Suzanne Oney, Marty Boone and Diane Parker.

Places of Interest To Visit In Lexington:

Henry Clay Home Big Red Mile Hunt Morgan House
Horse Farms Keeneland Race Course

And

WENNEKERS

153-155 EAST MAIN STREET

And Now Also a New Store in Turfland Mall
Where Sports Celebrities Make Their Headquarters

Save Money on Nationally Advertised Shoes

Prices You Can Afford



Policy supervision of Kentucky's Athletics Program is vested in a Board of Directors of the Athletics Association, headed by University President John W. Oswald (seated center above). Surrounding Dr. Oswald and Athletics Director Bernie Shively (seated third from left) are directors Dr. Aubrey Brown, Dr. John Douglas, Dr. Glenwood Creech, Floyd Wright, James H. Pence; (Standing) Dr. Lyman Ginger, Dr. Thomas Clark, Dr. W. L. Matthews (secretary), Dr. Ralph Angelucci, Steve Cook (student representative), Robert Johnson (vice-chairman), Dr. N. J. Pisacano, and Clay Maupin (treasurer). Absent when this picture was taken were Prof. David Blythe, Dr. A. D. Kirwan, Charles Landrum, and Dr. Charles Wilson.



NORTH

1 - 75 & NEWTOWN PIKE
233 - 0512



EAST

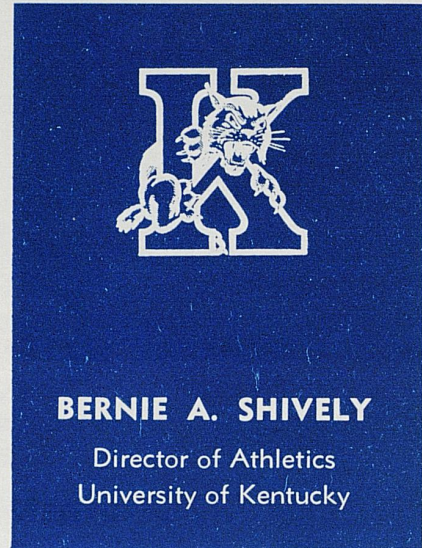
NEW CIRCLE ROAD &
WINCHESTER PIKE
252 - 2262



WEST

NEW CIRCLE ROAD &
NEWTOWN PIKE
252 - 6656

Eat, drink, be merry . . . and sleep tonight in your choice of 3 Holiday Inns in Lexington. Entertainment offered nightly. Private meeting rooms available for group functions. Select the menu of your choice and arrange your next meeting in Lexington at Holiday Inn—433 rooms in all with a courtesy car available and a convention hall accommodating 300.



Bernie Shively — A Veteran Administrator . . .

Administering "big-time" collegiate athletics today is big business in the fullest sense and takes a firm guiding hand to direct its course along a proper and profitable path.

Assuring patrons and participants of a fair-minded guidance of sports activities at the University of Kentucky is the long-time presence on the scene of able administrator Bernie A. Shively.

In the post of Director of Athletics at Kentucky since 1938, "Shive" (as he is familiarly known to thousands of fans) has gained nationwide respect for his ability in administering September to June activity in 10 different sports and involving use of facilities valued at several million dollars.

The tall, silver-haired, former gridiron All-American is credited with keeping pace with a growing University and increased public patronage by directing expansion of the school's physical facilities for sports. Under his supervision, a four-million-dollar coliseum was constructed, a spacious Sports Center prepared to take better care of spring sports teams as well as to provide unequalled football practice facilities, and seat-

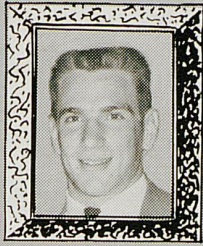
ing capacity of Stoll Field doubled. In the planning stage is a new football stadium which would release the present site for much-needed academic expansion.

Shively's first claim to fame came during undergraduate days at University of Illinois as he achieved All-America recognition as a guard on the 1926 grid team made famous by teammate Red Grange. The future UK Athletic Director also won the Big 10 heavyweight wrestling title and lettered in track.

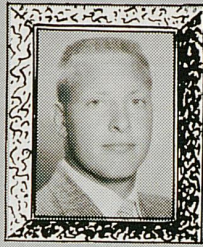
Following graduation in 1927, he accepted a position at UK as a line coach in football to start a long-time association. In the days since, he has served as head football coach for one year (1945), track and baseball coach and headed the physical education department.

Shively also has found time to be active in civic and alumni affairs and has attained national prominence through dedicated service in national athletic organizations. He currently holds membership on the powerful NCAA Executive Committee. He completed two terms as chairman of the University Division NCAA Basketball Tournament Committee and formerly served with the NCAA Summer Baseball group.

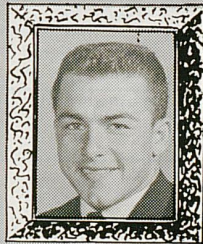
Ke
Playe
hono
playe
Si
1961
ing t
And
the
stand
anoth



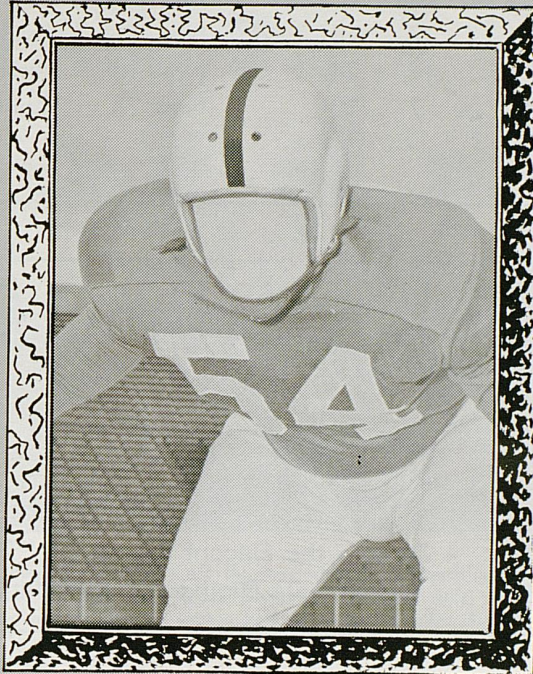
Tom Hutchinson
1961



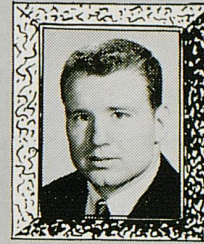
Tommy Simpson
1962



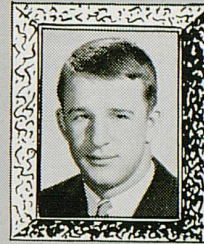
Darrell Cox
1963



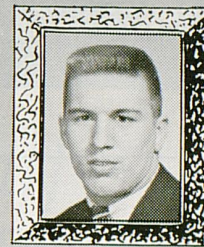
1967 MOST VALUABLE PLAYER



Jim Foley
1964



Rick Norton
1965



Larry Seiple
1966

Reserved for another great Wildcat.

Kentucky Central's "Most Valuable Player" award is one of the most coveted honors a University of Kentucky football player can win.

Since the award was established in 1961, we have had the privilege of saluting the six great Wildcats pictured above. And while we don't want to hurry through the current season, we already are standing in the wings waiting to make another presentation.

We have no idea who the 1967 recipient will be, but we're sure he'll be another outstanding player.

Kentucky Central is proud to support the University's athletic program through its "Most Valuable Player" award — just as we are proud of our other close ties with the Lexington community.

In almost every other major local activity—Junior Achievement, United Fund, Chamber of Commerce, church and service

club work—you'll find Kentucky Central people involved and helping.

Being a good citizen is a way of life at Kentucky Central and for each of the 350 people who work in our national headquarters in Lexington. And we wouldn't have it any other way.

(Of course, we still have time to sell a lot of insurance, or we wouldn't be one of the nation's largest life insurance companies.)



Kentucky Central Life Insurance Co.

LEXINGTON, KY. • AMERICA'S KEY TO FAMILY SECURITY SINCE 1902

1967 KENTUCKY FOOTBALL SCHEDULE AND RESULTS

Date	Opponent	Site	UK	Opp.	Date	Opponent	Site
Sept. 23	Indiana (A)	10	12	Oct. 28	*Georgia	Home
Sept. 30	Mississippi (H)	13	26	Nov. 4	West Virginia (HC)	Home
Oct. 7	Auburn (A)	7	48	Nov. 11	Vanderbilt	Away
Oct. 14	*Virginia Tech (H)	14	24	Nov. 18	Florida	Away
Oct. 21	*Louisiana State (A)	7	30	Nov. 25	Tennessee	Home

* Night Game.



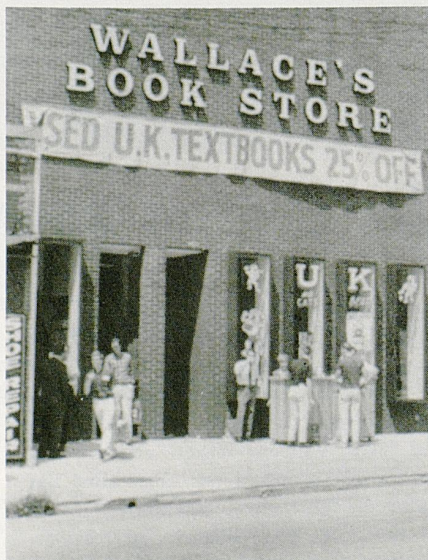
Springs Motel

2020 South Broadway PHONE 277-5751 Lexington, Kentucky

DANCE TO THE MUSIC OF "THE NEPTUNES"
Tuesday through Saturday — 9:00 - 1:00

Dine in the Elegant Setting of "THE POMPEI ROOM"
Private Dining Accommodations For Groups

Join The
Crowd That
Buys Their
USED Books and
Supplies at
WALLACE'S
And You Can
Save Money
Too!



WALLACE'S BOOK STORE

385 S. LIMESTONE
PHONE 255-7973

*"More Books for Your Money,
More Money for Your Books"*



Surrounding Head Coach Charlie Bradshaw (front center) are the men who will be assisting him in coaching the Kentucky grid team in 1967. Flanking Coach Bradshaw in front are Defensive Coach Clarence Underwood (left) and Offensive Coach George Sengel. Standing (from the left) are Trainer Ralph Berlin and Assistant Coaches Phil Owen, Leon Fuller, Rich Machel, Charley Pell, Doug Shively, Wally English, Jim Poynter and Bill Conde.

Wildcat Coaching Staff

A blend of the old and new and plenty of Wildcat blue characterize Charlie Bradshaw's coaching staff as the 77th season of football gets underway at the University of Kentucky.

The lineup of assistants is the same as last year with the exception of **William (Moon) Conde**, who is no stranger to the Wildcat scene.

Conde lettered for the Wildcats in 1949-50-51 before working with Bradshaw at Sidney Lanier High School in Montgomery, Ala. He also played under **Clarence (Buckshot) Underwood**, who was line coach for the Wildcats from 1948-55.

Underwood, a native of West Virginia, had a sparkling coaching career (77-26-6) at Thomas Jefferson High School in Port Arthur, Texas, before returning to the Wildcat ranks in 1966. He is in charge of co-ordinating defense and working primarily with interior defensive personnel. Other responsibilities include the varsity housing and co-ordinating the study program.

The defensive staff is rounded out by three promising and proven young coaches.

Leon Fuller, former All-Conference defensive back and academic All-America at Alabama, came to Kentucky last year from Oklahoma State, where he was an assistant for three years. He was a four-sports standout at Nederland (Texas) High School before attaining junior college All-America honors at Tyler, Texas. He played his final two years under Bradshaw, then an assistant at Alabama.

Doug Shively, an end for the Wildcats from 1956 through 1958 and co-captain his final year, returned to his alma mater last season after one year as an assistant to Underwood at Port Arthur and six years as an aide at Virginia Tech. He is in charge of linebackers and head of out-of-state recruiting.

Charley Pell, who joined the Wildcats last year as a defensive interior line coach, completed a military obligation in time for fall practice.

George (Chink) Sengel, another veteran with a solid Wildcat background, is in charge of co-ordinating the offense. Extra-curricular activities include lining up summer employment for the Wildcats. Sengel's collegiate career at Kentucky spanned the same years

(1942-46-47) at Bradshaw. He began his coaching career as a freshman assistant at UK in 1949 and had coaching and athletic director tenures at Clay County High in Green Cove Springs, Fla., and Apoptka, Fla., before returning to his home town as end coach for Louisville Male High. He joined Blanton Collier at UK in 1961.

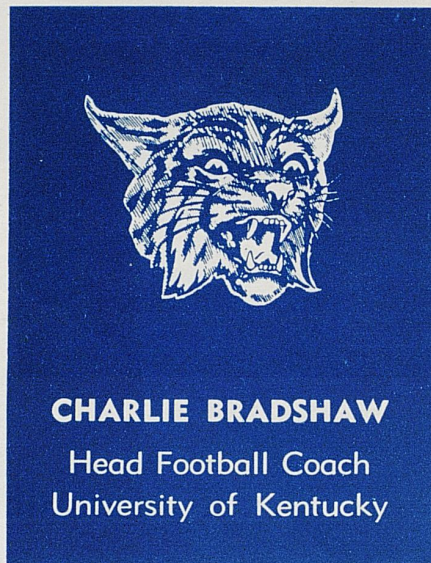
On offense, **Conde** will handle linemen and co-ordinate the responsibilities of student coaches. Conde will also direct the student managers. He came to Kentucky from Virginia Tech, where he was a defensive line coach seven years. He has also been head coach at Louisville Manual, Charleston (W. Va.) Catholic High School and Male High.

Another former Wildcat, **Jim Poynter** (1959-60), had a great schoolboy coaching career (40-10-1) at Glasgow, Clark County and Henry Clay before joining Bradshaw's staff last year as offensive backfield coach. He has the responsibility for the running backs, co-ordinates the FCA program and heads up the in-state recruiting program.

Working directly with the quarterbacks and the passing game is **Wally English**, who moved into an assistantship last year after serving as a graduate assistant in 1965. He was quarterback three years (1955-56-57) at Louisville and was an assistant at DeSales High School in 1959 and head coach four years at Bishop David High School in Louisville and one year at Mt. Carmel High in Houston, Texas. He is also responsible for all film exchanges, perpetual inventory of football equipment and co-ordination of the visitation program for high school and college students.

Phil (Duke) Owen, who joined the Wildcat staff in 1964 after a highly successful schoolboy career at Mt. Sterling, coached the Wildcat freshmen two years before receiving his first varsity assignment, working with backs on both offense and defense, last year. He is in charge of centers on offense and the kicking game and will also continue to work with the freshmen.

Bradshaw said the combination of experience, enthusiasm, and Wildcat ties has resulted in a staff which should work together in harmony.



Wildcat Coach Sets Winning Tradition . . .

When Charlie Bradshaw took over the grid reins of his Alma Mater in 1962, he made no rash promises on the subject of a timetable for rebuilding the shattered foundation of Kentucky football. He stated simply and forthrightly: "If I did not think I could get the job done, I would not be here."

After five hectic seasons of working at the unenviable task, Coach Bradshaw still adheres to his hard-work philosophy without setting a target date for production of the all-winning combination that both he and Wildcat fans would like to see. The job of building a consistent winner for the alumni and the hustling, talented aggregation a coach cherishes has been beset by countless problems of varying magnitude that would have discouraged a less dedicated individual, but Bradshaw has forged steadily ahead.

His reward is yet to come—and may not arrive this season. But there are encouraging signs that Charlie Bradshaw and Kentucky football have "turned the corner" on the path to better days.

Among these good omens that seem destined to breathe new life into the old Wildcats are increasing numbers—a more abundant supply of material to provide vitally-needed depth to match opponents—and more talented personnel—as re-

flected by a 15-3-1 record posted by the first five freshman crops recruited by Bradshaw and his staff.

Exemplifying the faith placed in his hard work philosophy and procedures is the unique "life-time" contract tendered the youthful and determined ex-Wildcat upon the successful (6-4) completion of an adversity-plagued 1965 season. The new pact, believed unique to college-coach relationships, assures Bradshaw of tenure similar to that given academic personnel. At such time as he ceases to perform his current coaching duties, he will have the opportunity to take another position on the University staff.

The magnitude of the repair job being engineered by the 42-year-old former UK end and assistant coach likely will never be fully understood by anyone less closely associated with it than the self-sacrificing Bradshaw. Only a dedicated gentleman could take a positive approach and—more importantly—stick with it in the face of increasing obstacles.

Charlie Bradshaw is more than a good football coach. He is the personification of qualities of inner fortitude, outwardly serious demeanor, ability, confidence, integrity and quiet determination. He is an inspirational leader.

New Chevrolet Impala, foreground. Chevelle Concours, top right. Camaro, "The Hugger," top left.



'68 Chevrolets

Dramatic!
Distinctive!
Daringly new!

Expect a lot of never-befores and nice-to-haves from Chevrolet for 1968. You can count on nothing being newer. Formal and fastback roof lines. Elegant new interiors with exciting colors, fabrics, and easy-to-reach instruments. Concealed headlights, Hide-A-Way windshield wipers, and refreshing Astro Ventilation, available on many models.

NEW SILENT RIDE.

More effective body and engine mounts, quieter exhaust systems, and further improved shock absorbers. The result? Every new Chevrolet rides incredibly smooth and silent.

NEW MODELS, TOO.

Like the elegant Impala Custom Coupe and rugged new Chevelle Nomad Station Wagons. For the serious sports fan, there's the completely re-styled Corvette Sting Ray, and the Chevelle SS 396 with long-hood short-deck styling and a wider wheel

stance to make it cling to the road better. Camaro, "The Hugger," features Astro Ventilation, and special hood on all SS models. What's more, there's a larger 307-cubic-inch V8 standard on Chevrolet, Chevelle and Chevy II models for '68. On most automatic transmission models, there's even a built-in heater that warms air en route to the carburetor and increases engine efficiency during cold weather. The new GM exhaust emission control is standard.

PROVED SAFETY FEATURES.

The famous proved GM-developed energy absorbing steering column and many other popular safety items are back again. Plus new features like energy absorbing front seat backs, safety armrests that shield door handles, side marker lights, and seat belts for all passenger positions. Be smart. Be sure. Buy now at your Chevrolet dealer's.



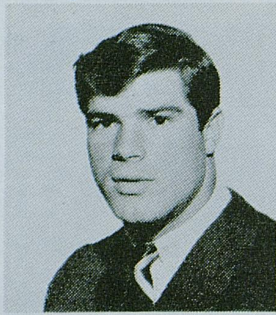
Free! Get Chevrolet's 60-page College Football Handbook

Chevrolet's College Football Handbook contains a complete run-down on all the top teams, plus action photographs and inside stories by famous sports commentators. You'll also find the schedules and line-ups of all 33 NCAA games to be televised this fall. It's yours for the asking at your Chevrolet dealer's.



MARK OF EXCELLENCE





BOBBY ABBOTT



TOM ANDERSON



JEFF VAN NOTE

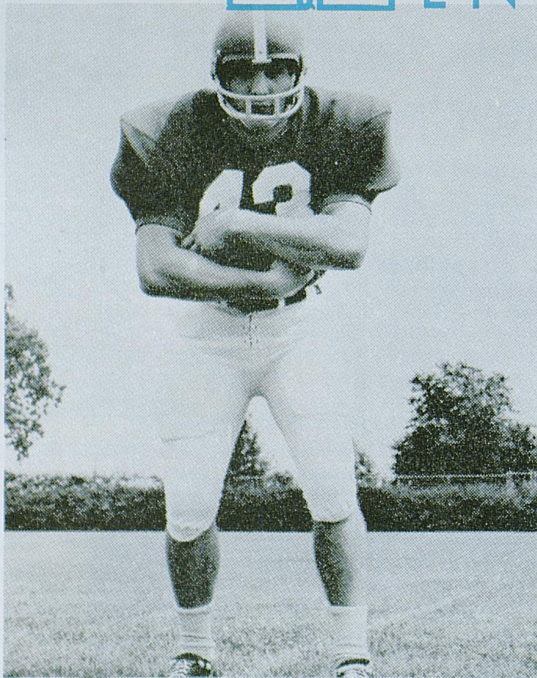


DAVE BAIR



MIKE BEIRNE

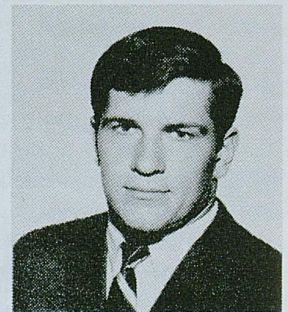
 KENTUCKY



DICK BEARD



AL BORNE



MIKE BOULWARE



JIM BROADWATER



BILL CARTWRIGHT

Follow U. OF K. in '67

on
the

**STANDARD
OIL**

Radio
Network

WINN
Louisville

WVLK
Lexington

WOMI
Owensboro

WIEL
Elizabethtown

WCMI
Ashland

WHOP
Hopkinsville

WFKY
Frankfort

WNGO
Mayfield

WKIC
Hazard

WHIR
Danville

WCTT
Corbin

WFTM
Maysville

WPKE
Pikeville

WLBJ
Bowling Green

WDXR
Paducah

WKAY
Glasgow

WANO
Pineville

WSIP
Paintsville

WSFC
Somerset

WLKS
West Liberty

Come to Chevron Island!



LEXINGTON'S #1 STATION YEAR after YEAR

CBS

WVLK

590

U K FOOTBALL
STANDARD OIL SPORTS NETWORK

- ★ Plus - "Pick-of-Dixie"
- ★ SEC Game of The Week
- ★ Cleveland Browns
- ★ Cincinnati Reds
- ★ ★ ★ ★ ★

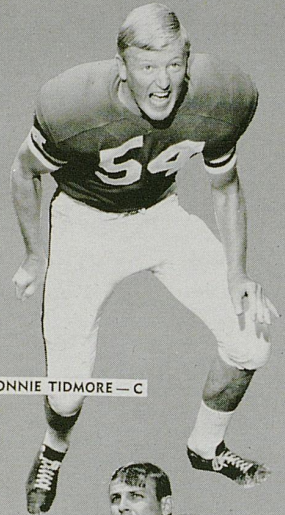


CLAUDE SULLIVAN

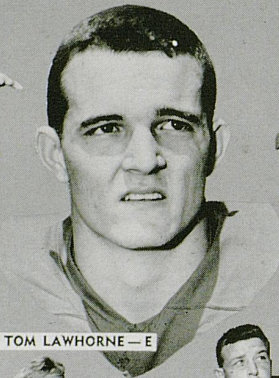
BULLDOGS



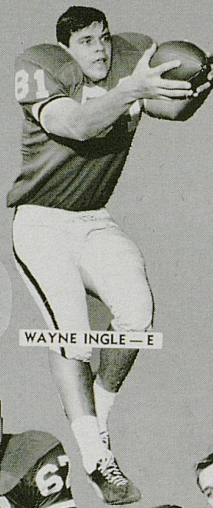
HAROLD TARRER — LB



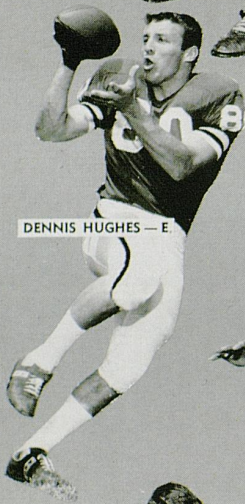
RONNIE TIDMORE — C



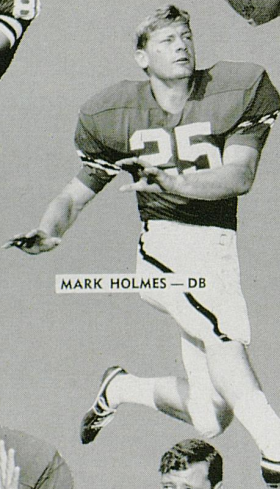
TOM LAWHORNE — E



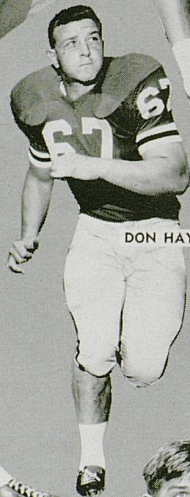
WAYNE INGLE — E



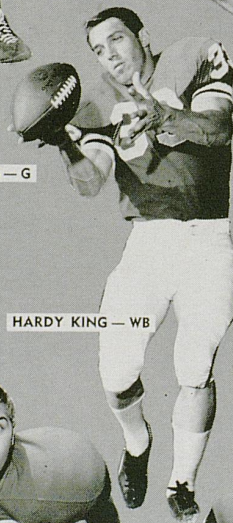
DENNIS HUGHES — E



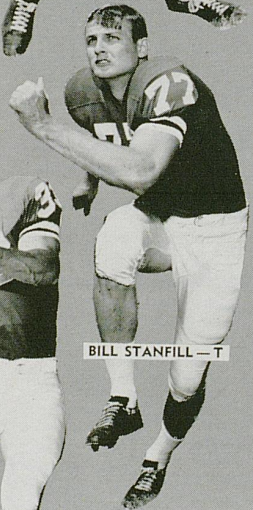
MARK HOLMES — DB



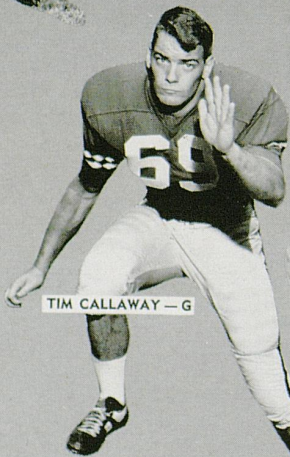
DON HAYES — G



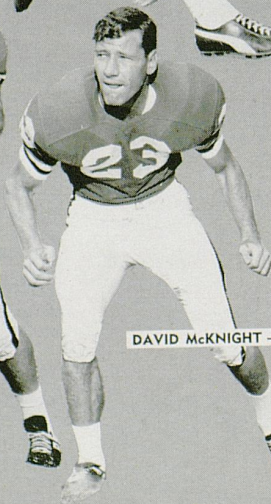
HARDY KING — WB



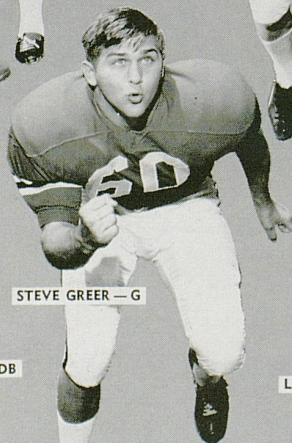
BILL STANFILL — T



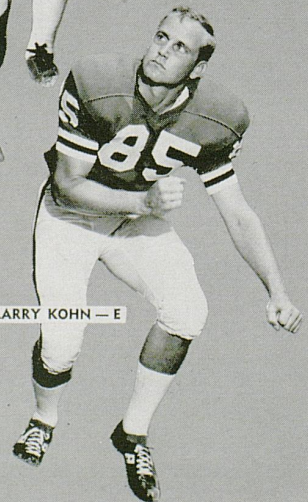
TIM CALLAWAY — G



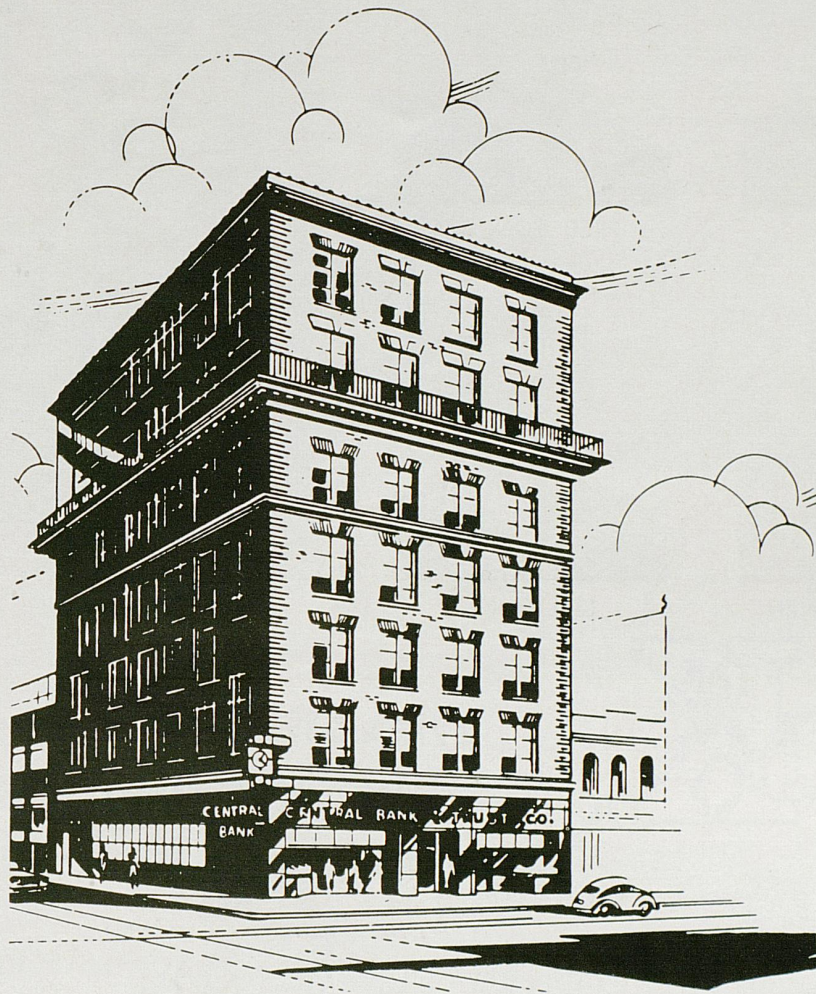
DAVID MCKNIGHT — DB



STEVE GREER — G



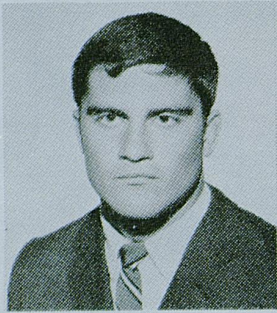
LARRY KOHN — E



A sure winner
for convenient banking

Central
BANK & TRUST CO.

SHORT AND UPPER STREETS
LEXINGTON, KENTUCKY



ROD CLOYD



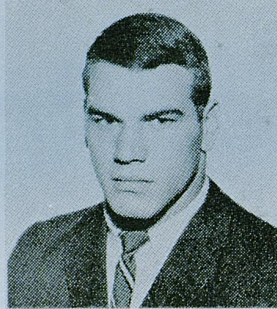
FRED CONGER



KERRY CURLING



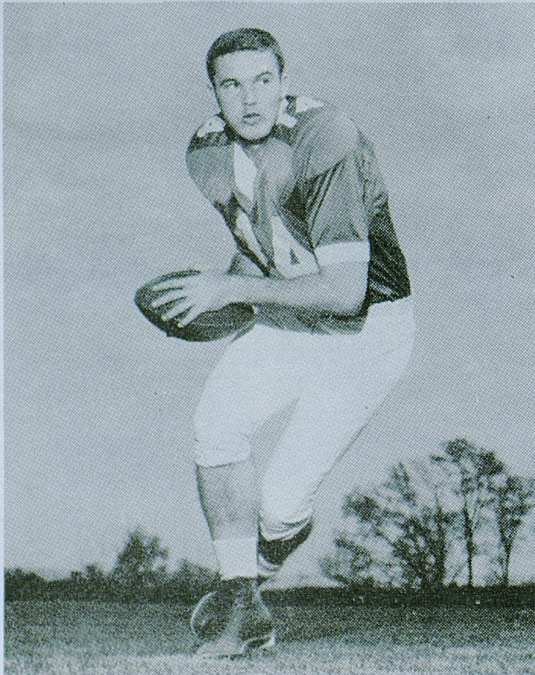
DENNIS DRINNEN



BILL DUKE



KENTUCKY



TERRY BEADLES



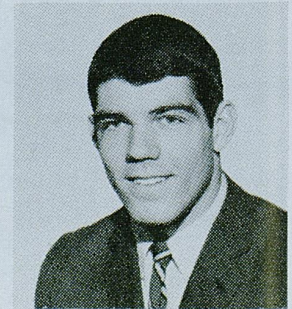
PAT ECKENROD



TOM FEE

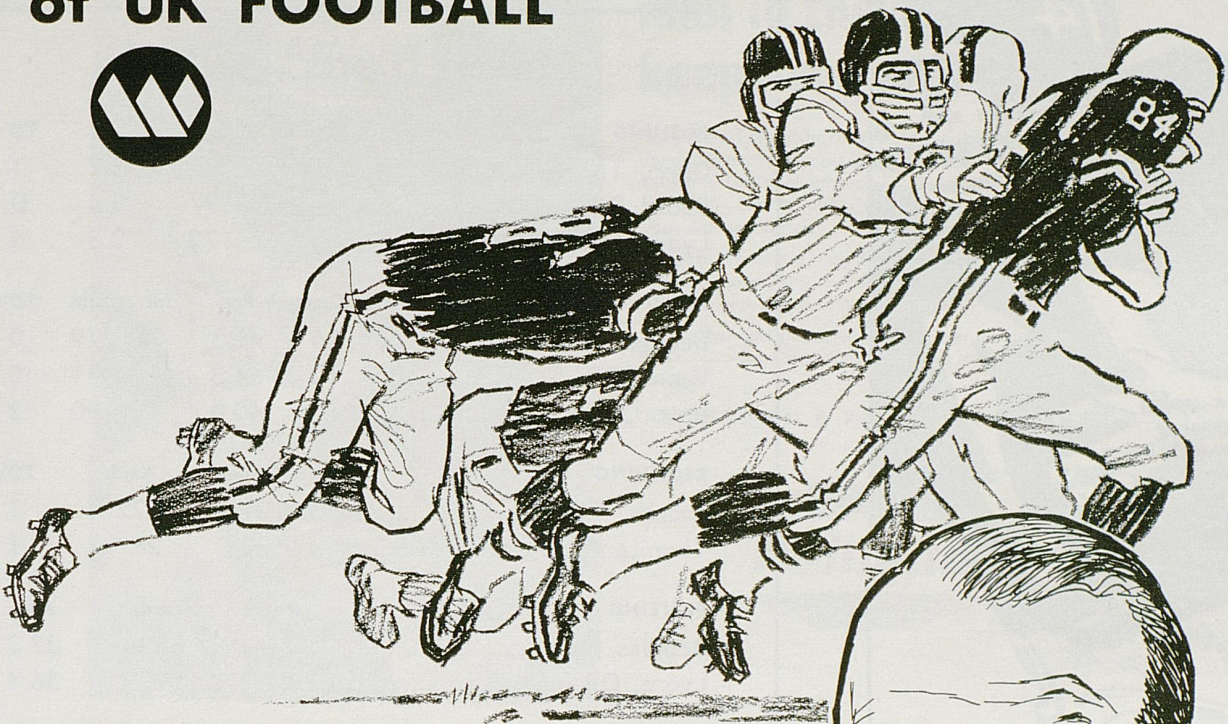


TOM FERGUSON



STAN FORSTON

Hear the *GOING SOUND* of UK FOOTBALL



Follow the Wildcats with Cawood Ledford on 'H-A-S 840 Radio!



Football Warmup

Ten minutes prior to game time, Jerry's Drive-In Restaurants present Cawood with opponents' records, histories and rivalries.

EVERY UK FOOTBALL GAME

Cawood's play-by-play calls of UK football games are co-sponsored by Your Friendly SINCLAIR DEALER and EAST KENTUCKY Rural Electric Co-operatives.

S.E.C. FOOTBALL

Keep up with the Wildcats' opponents . . . exciting football every week.



WHAS ⁸⁴⁰ RADIO



**MAKE
EVERY YARD
COUNT...
DOUBLE!**

Double because you'll be earning a commission while you earn your college degree.

All it takes is a few hours a week and a six-week summer camp. It's that easy in Army ROTC.

Whether you plan a civilian or a military career, Army ROTC gives you the kind of training and experience you need to motivate, organize and lead men. You'll learn them all in Army ROTC.

Get the details from your Professor of Military Science at any ROTC college.

Your future, your decision... choose Army ROTC.

STATISTICALLY SPEAKING

KENTUCKY LEADERS — 5 GAMES

RUSHING	Carries	Gain	Avg.	TD's
Gann, TB	66	245	3.7	1
Beard, TB	18	97	5.4	0
Lyons, QB	31	72	2.3	2

PASSING	Att.	Comp.	Pct.	Int.	Gain	TD's
Beadles, QB	63	26	41.3	7	279	0
Lyons, QB	35	12	34.3	3	131	0
Bair, QB	40	16	40.0	4	190	2

RECEIVING	Caught	Yards	TD's
Jacobs, WB	21	222	1
Thompson, E	20	237	1

PUNTING	Punts	Yards	Avg.
Beadles, QB	15	559	37.3
Lyons, QB	19	690	36.3

SCORING	TD's	Convs.	FG's	Points
Lyons, QB	4	1-1	0-0	25
Weld, KS	0	5-6	1-1	8

GEORGIA LEADERS — 5 GAMES

RUSHING	Carries	Gain	Avg.	TD's
Jenkins, FB	85	292	3.5	3
Moore, QB	53	285	5.7	5
Lawrence, TB	45	177	4.2	3

PASSING	Att.	Comp.	Pct.	Int.	Gain	TD's
Moore, QB	56	26	46.5	4	408	2

RECEIVING	Caught	Yards	TD's
Hughes, LE	8	205	2
S. Johnson, LE	8	87	0
Payne, RE	6	73	0

PUNTING	Punts	Yards	Avg.
Moore, QB	8	344	43.0
Jones, KS	27	1,081	40.1

SCORING	TD's	Convs.	FG's	Points
Moore, QB	5	0-0	0-0	30
McCullough, KS	0	19-19	4-7	31



Man in the know keeps you on the go!

Your Good Neighbor Ashland Dealer's brand of service is extra special. Call it Attitude. Or Personal Concern. Or Thoroughness. Or Reliability. It all adds up to extra care for your car at no extra cost . . . from your Ashland Dealer.

He also offers the very finest petroleum products available anywhere . . . such as Ashland Vitalized Gasoline and Valvoline Motor Oil.

To get the most out of your car . . . get to know your Good Neighbor Ashland Dealer. He's always "at your service."

ASHLAND OIL & REFINING COMPANY



- 28 Different Varieties of Pancakes and Waffles
- Steaks, Chops, Chicken Seafood Also Available
- Dine In An Early American Atmosphere
- Informal, Friendly, Courteous Service

GENE HARRIS — Manager

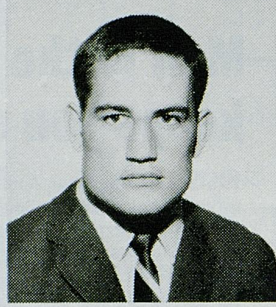
DIAL — 254-3893

Located On U.S. 27 At South Lime and Rose Streets
Across from University of Kentucky Medical Center

"Stop In Before and After the Game"



BOB FREIBERT



ROGER GANN



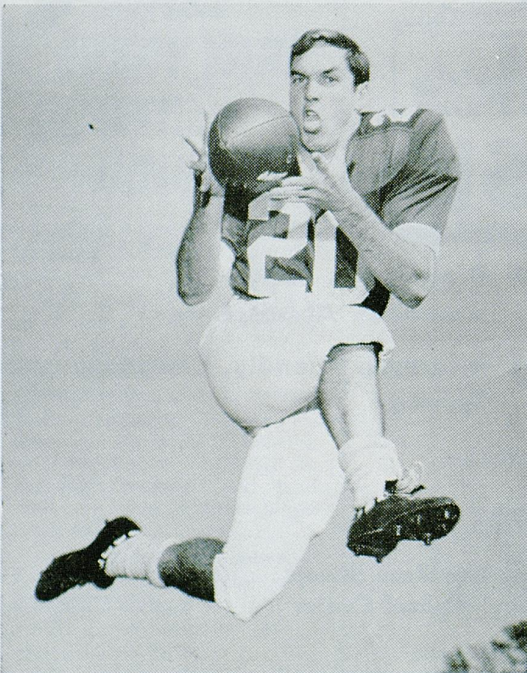
GEORGE KATZENBACH



PHIL GREER



JIM GRESHAM



JOE JACOBS



DAVE HANSON



RODGER HART



DON HOLLAND



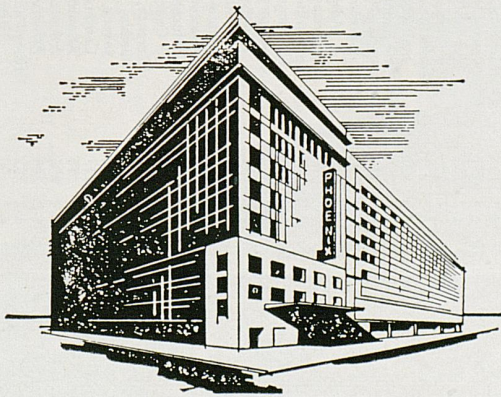
MARTY JOYCE

planned with you in mind, the new . . .

Stewart's

- Kentucky's favorite department store
- 380 car parking garage adjoining
- Personal Shopping Service, 255-3661
- Open Mondays and Fridays 'til 9

Lexington's Largest and Finest!



Kentucky's Convention
Headquarters
120 E. Main St.
Downtown Lexington, Ky.
Phone 255-3210

FEATURING

Le Deauville
RESTAURANT
and LOUNGE

- FREE PARKING
- BEVERAGE & FREE ICE MACHINE
ON EACH GUEST FLOOR
- 100% AIR CONDITIONED
- TV IN ALL ROOMS
- ALL ROOMS REMODELED
AND REDECORATED
- COFFEE SHOP AND DINING ROOM
WITH ECONOMICAL PRICES

PHOENIX HOTEL

GEORGIA

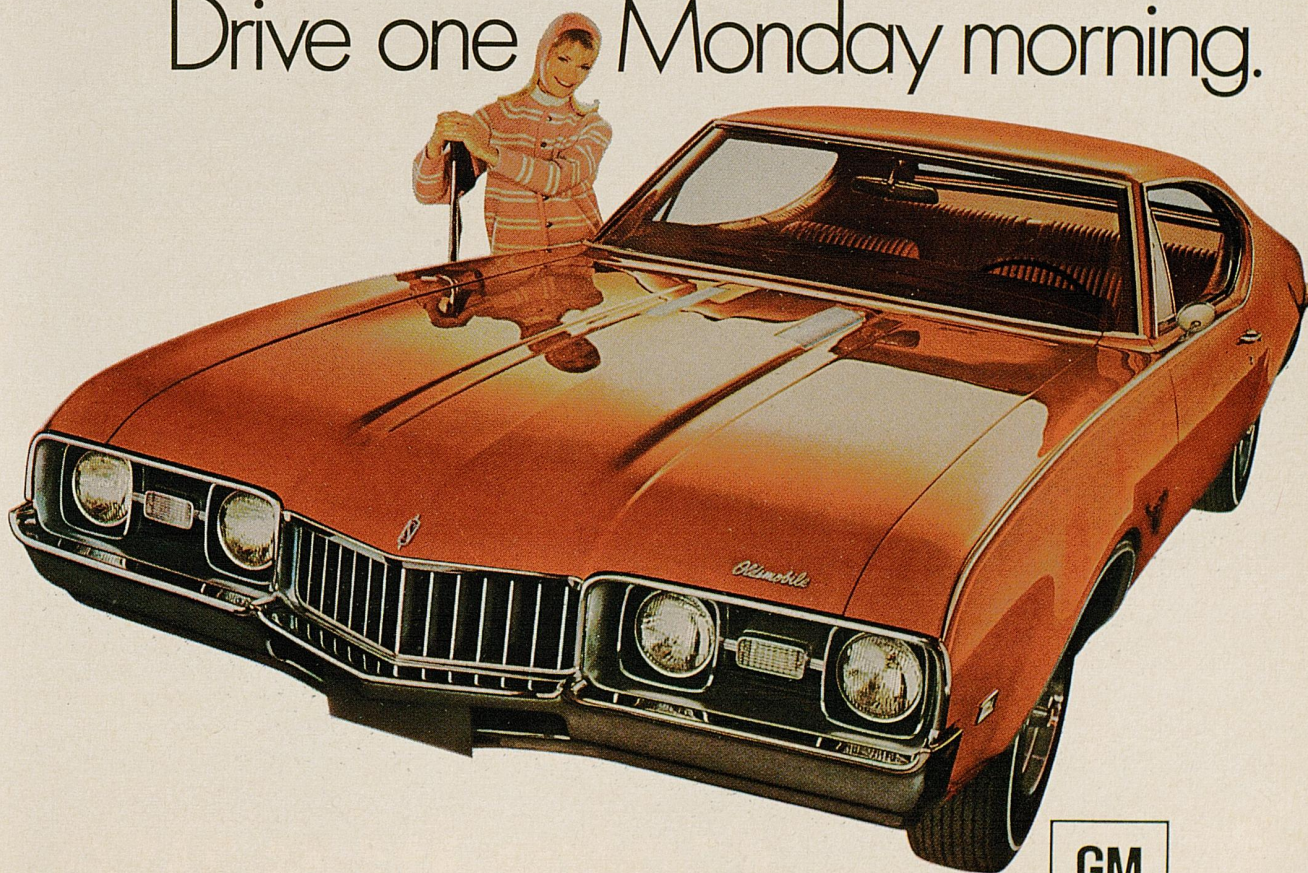
10	Paul Gilbert, Soph., QB	19	6-0	180	Athens, Ga.
11	Spike Jones, Soph., P	20	5-11	180	Louisville, Ky.
13	Jake Scott, Soph., S	22	6-1	191	Arlington, Va.
14	Kirby Moore, Sr., QB	22	5-11	189	Dothan, Ala.
15	Max Carnes, Soph., PK	19	5-10	174	Commerce, Ga.
16	John Griffin, Soph., S	19	5-11	180	Atlanta, Ga.
17	Donnie Hampton, Soph., QB	20	6-0	183	Atlanta, Ga.
19	Mark Stewart, Jr., S	21	6-1	191	Headland, Ala.
20	Terry Sellers, Sr., RH	23	6-0	190	Headland, Ala.
22	Ed Allen, Soph., LH	19	5-9	161	Athens, Ga.
23	David McKnight, Jr., LH	21	6-1	181	Ft. Monroe, Va.
24	Kent Lawrence, Jr., TB	20	5-10	175	Central, S. C.
25	Mark Holmes, Sr., LH	21	5-9	175	Warner Robins, Ga.
27	Penny Pennington, Jr., RH	20	5-10	177	Columbus, Ga.
30	Bruce Kemp, Soph., FB	20	6-2	207	Atlanta, Ga.
31	Trav Paine, Soph., TB	19	5-11	182	Augusta, Ga.
32	Steve Woodward, Jr., WB	21	5-11	185	Greer, S. C.
33	Hardy King, Sr., WB	21	6-0	196	Harlem, Ga.
35	Stu Mosher, Sr., LB	21	5-11	185	Jacksonville, Fla.
36	Jim McCullough, Soph., PK	19	6-0	195	Macon, Ga.
37	Craig Elrod, Jr., TB	21	6-1	188	Marietta, Ga.
38	Stan Boggs, Soph., RH	19	5-11	171	LaGrange, Ga.
39	Greg Herlong, Soph., WB	20	6-2	183	Johnston, S. C.
41	Brad Johnson, Jr., FB	20	5-10	204	Avondale, Ga.
43	Ronnie Huagins, Soph., LB	20	5-11	193	College Park, Ga.
44	Ronnie Jenkins, Sr., FB	21	6-0	215	Glennville, Ga.
45	Rusty Epperson, Soph., FB	20	5-11	193	Atlanta, Ga.
46	Steve Farnsworth, Soph., TB	20	6-1	198	Greenville, S. C.
48	Bob DuPriest, Soph., LB	20	5-10	194	Birmingham, Ala.
51	Ronnie Rogers, Soph., RG	19	6-2	225	Dublin, Ga.
53	Mike Lopatka, Soph., C-LB	19	5-11	210	Beaufort, S. C.
54	Harold Tidmore, Jr., C	22	6-4	205	Columbiana, Ala.
55	Harold Tarrer, Jr., LG	20	6-2	210	Thomaston, Ga.
56	George White, Jr., C	21	6-1	215	Chattanooga, Tenn.
57	Happy Dicks, Jr., LB	21	6-2	203	Chattanooga, Tenn.
58	Tommy Lawhorne, Sr., LB	21	6-2	205	Sylvester, Ga.
60	Steve Greer, Soph., LG	20	5-11	195	Greer, S. C.
61	Pat Rodrigue, Jr., RG	20	5-11	211	Greenville, S. C.
63	Joe Claman, Soph., LT	20	6-3	206	Marietta, Ga.
64	Bruce Tawn, Jr., LG	21	6-0	205	Statesboro, Ga.
65	Jim Layfield, Jr., RG	21	5-11	212	Millsboro, Del.
66	Jeff McKibben, Soph., LG	19	6-2	206	Winter Haven, Fla.
67	Don Hayes, Sr., LG	22	6-1	230	Adel, Ga.
68	Ronnie Adkins, Soph., RG	19	6-2	220	Americus, Ga.
69	Tim Callaway, Soph., RG	20	6-1	196	Thomasville, Ga.
70	David Rholetter, Jr., LT	20	6-2	225	LaGrange, Ga.
72	Edgar Chandler, Sr., RT	21	6-2	222	Cedartown, Ga.
73	Paul Handmacher, Sr., LT	22	6-3	212	Atlanta, Ga.
74	Bill Sampson, Jr., RT	21	6-1	223	Atlanta, Ga.
75	Curtis McGill, Soph., RT	19	6-3	225	Miami, Fla.
76	Woody Woodall, Soph., RT	20	6-2	229	Lincolnton, Ga.
77	Jiggy Smaha, Jr., RT	21	6-3	230	Thomaston, Ga.
78	Wayne Byrd, Soph., LT	20	6-5	230	Caico, Ga.
79	Dick Young, Jr., RT	20	6-0	215	Florence, S. C.
80	Dennis Hughes, Soph., RE	19	6-1	210	Columbia, Tenn.
81	Wayne Ingle, Sr., LE	21	6-3	217	Seneca, S. C.
82	Lee Daniel, Jr., LE	20	6-2	195	Conyers, Ga.
83	Sandy Johnson, Jr., LE	20	6-3	206	Atlanta, Ga.
84	Tommy Lyons, Soph., LE	19	6-2	205	Atlanta, Ga.
85	Larry Kohn, Sr., RE	22	6-2	205	Atlanta, Ga.
86	Gary Adams, Sr., LE	22	6-1	190	Atlanta, Ga.
88	Phillip Russell, Soph., RE	19	6-1	191	Tifton, Ga.
89	C. Whittemore, Soph., RE	19	6-0	200	Thomson, Ga.
					Douglasville, Ga.

KENTUCKY

14	Terry Beadles, Sr., QB	21	5-11	190	Fulton, Ky.
15	Tom Ferguson, Soph., LB	20	5-11	180	Ashland, Ky.
16	Rodger Harr, Sr., LB	22	5-9	180	Albertville, Ala.
18	Raymond Cloyd, Jr., DHB	19	6-0	195	Lawrenceburg, Ky.
19	Dave Bar, Soph., QB	19	6-0	180	Greensburg, Pa.
20	Joe Jacobs, Soph., FLB	19	6-0	175	Hobbs, N. M.
21	Bobby Abbott, Soph., S	20	5-8	170	Kingston, Tenn.
22	Tom Fee, Sr., TB	22	5-9	170	Uniontown, Pa.
24	Dicky Lyons, Jr., QB-TB	20	6-0	185	Louisville, Ky.
27	Mike Meighan, Soph., DHB	19	6-1	190	Avonmore, Pa.
29	Dave Wald, Jr., KS	23	5-9	165	Malvern, Pa.
30	Phil Greer, Jr., DHB	20	6-2	190	Burdine, Ky.
31	Al Borne, Soph., DHB	19	6-1	185	Louisville, Ky.
32	Roger Gann, Soph., TB	19	6-2	200	Fayetteville, N. C.
33	Jay Reynolds, Soph., FLB	18	6-0	170	Perryville, Ky.
34	Al Phaneuf, Jr., DHB	23	6-0	190	Montreal, Can.
38	Chuck Blackburn, Soph., OE	20	6-2	201	Westerville, Ohio
40	Don Holland, Soph., LB	19	6-0	180	Worthington, Ohio
41	Don Britton, Sr., FB	23	5-10	200	Broomall, Pa.
42	Vic King, Soph., LB	19	6-2	180	Kingston, Tenn.
43	Dick Beard, Soph., TB-FB	20	6-2	200	Altoona, Pa.
44	Scott Valentine, Soph., OG	20	6-0	210	Fairfax, Va.
45	George McClellan, Sr., DE	24	5-10	180	Bristol, Tenn.
46	Bill Duke, Soph., DHB	18	5-11	182	Owensboro, Ky.
47	Ronnie Phillips, Soph., FB	19	6-0	205	Grundy, Va.
48	Keith Raynor, Soph., DT	20	6-2	215	Raleigh, N. C.
49	Ed Zaremba, Soph., DT	21	6-2	205	Parma, Ohio
50	Marty New, Soph., LB	19	6-0	220	Hamilton, Ohio
51	Bill Cartwright, Jr., C	20	6-0	200	Princeton, Ky.
52	Pat Eckenrod, Soph., C	18	6-4	200	Chattanooga, Tenn.
53	Fred Conger, Soph., LB	18	6-0	210	Feasterville, Pa.
54	Carly Shaid, Soph., LB	19	5-10	190	Ft. Walton Beach, Fla.
56	Sam Marvis, Soph., DT-OT	19	6-4	235	Mt. Pleasant, Pa.
57	Dave Sullivan, Soph., LB	19	5-11	185	Lexington, Ky.
60	Mike Berne, Sr., OG	22	6-1	205	McKeesport, Pa.
61	Marty Yardon, Soph., OT-OG	20	6-1	215	Troy, N. Y.
62	Mike Boulware, Soph., DT	18	6-2	205	Columbus, Ohio
63	Doyle King, Soph., DE	20	6-1	215	Mt. Sterling, Ky.
64	Kerry Curling, Sr., DT-LB	21	5-10	190	Princeton, Ky.
66	Kenny Wood, Jr., OG	20	6-1	195	Montgomery, Ala.
67	Louis Wolf, Jr., OG	20	5-11	190	Louisville, Ky.
68	Jim Broadwater, Soph., DE	19	6-2	205	Fairless Hills, Pa.
69	Steve Koon, Soph., DE	17	6-0	200	Hopkinsville, Ky.
70	Ronnie Roberts, Sr., OT	21	6-3	225	Louisville, Ky.
71	Bob Freibert, Jr., OG-OT	20	6-2	215	Louisville, Ky.
72	Dave Pursell, Soph., OT	18	6-5	255	Morrisville, Pa.
73	Marty Joyce, Soph., DT	20	6-1	225	Wilmington, Del.
74	Donnis Drimen, Jr., OT	20	6-1	225	Loveland, Ohio
75	Dwight Little, Sr., DE	20	6-1	230	Huntsville, Ala.
76	Dick Palmer, Soph., DE	21	6-3	230	Marion, Ky.
77	Len Kusch, Jr., OG-OT	20	6-2	225	Hamilton, Ohio
79	George Katzenbach, Jr., DT	21	6-1	225	Philadelphia, Pa.
80	Phil Thompson, Soph., OE	19	6-2	185	Louisville, Ky.
81	Tom Anderson, Sr., FLB-OE	23	6-0	180	Birmingham, Ala.
84	Derek Potter, Jr., OE	20	6-2	200	Elkhorn City, Pa.
85	John Zeles, Jr., OE	21	6-2	190	Phoenixville, Pa.
86	Bill Hazle, Soph., DE	19	6-1	195	Hodgenville, Ky.
88	Jim Mitchell, Soph., FB	18	6-0	195	Louisville, Ky.
87	Doug Van Meter, Sr., LB	21	6-0	200	Owensboro, Ky.
88	Jeff Van Note, Jr., DE	21	6-1	210	Anchorage, Ky.
90	Dave Hanson, Soph., DT	18	6-2	220	Greensburg, Pa.

The '68 "youngmobiles" from Oldsmobile are here.

Drive one Monday morning.



Cutlass S Holiday Coupe
at your nearest Oldsmobile Dealer's.





Coca-Cola... served at the training centers of the United States Olympic Team.

Coke has the taste

TRADE-MARK®

OFFENSE

80 DENNIS HUGHES LE
 70 DAVID RHOLETTER LT
 67 DON HAYES LG
 54 RONNIE TIDMORE C
 61 PAT RODRIGUE RG
 71 EDGAR CHANDLER RT
 87 BILLY PAYNE RE
 14 KIRBY MOORE QB
 24 KENT LAWRENCE TB
 33 HARDY KING WB
 44 RONNIE JENKINS FB

DEFENSE

15 TOM FERGUSON LLB
 88 JEFF VAN NOTE LE
 64 KERRY CURLING LT
 54 CARY SHAHID MLB
 62 MIKE BOULWARE RT
 75 DICK PALMER RE
 87 DOUG VAN METER RLB
 34 AL PHANEUF LHB
 46 BILL DUKE R
 38 CHARLES BLACKBURN S
 30 PHIL GREER RHB

Georgia

DEFENSE

86 GARY ADAMS LE
 77 BILL STANFILL LT
 55 HAROLD TARRER LG
 60 STEVE GREER RG
 76 JIGGY SMAHA RT
 85 LARRY KOHN RE
 57 HAPPY DICKS LLB
 58 TOMMY LAWHORNE RLB
 25 MARK HOLMES LH
 20 TERRY SELLERS RH
 13 JAKE SCOTT S

Kentucky

OFFENSE

80 PHIL THOMPSON QE
 74 DENNIS DRINNEN QT
 67 LOUIS WOLF QG
 66 KENNY WOOD C
 76 DWIGHT LITTLE SG
 71 BOB FREIBERT ST
 83 DEREK POTTER SE
 24 DICKY LYONS QB
 43 DICK BEARD TB
 48 KEITH RAYNOR FB
 20 JOE JACOBS FL

BULLDOG SQUAD

10 Gilbert, QB	56 White, C
11 Jones, P	57 Dicks, LB
13 Scott, S	58 Lawhorne, LB
14 Moore, QB	60 Greer, LG
15 Carnes, PK	61 Rodrigue, RG
16 Griffin, S	63 Clamon, LT
17 Hampton, QB	64 Yawn, LG
19 Stewart, S	65 Layfield, RG
20 Sellers, RH	66 McKibben, LG
22 Allen, LH	67 Hayes, LG
23 McKnight, LH	68 Adkins, RG
24 Lawrence, TB	69 Callaway, RG
25 Holmes, LH	70 Rholetter, LT
27 Pennington, RH	71 Chandler, RT
30 Kemp, FB	72 Handmacher, LT
31 Paine, TB	73 Sampson, RT
32 Woodward, WB	74 McGill, RT
33 King, WB	75 Woodall, RT
35 Mosher, LB	76 Smaha, RT
36 McCullough, PK	77 Stanfill, LT
37 Elrod, TB	78 Byrd, LT
38 Boggus, RH	79 Young, RT
39 Herlong, WB	80 Hughes, RE
41 Johnson, FB	81 Ingle, LE
43 Huggins, LB	82 Daniel, LE
44 Jenkins, FB	83 Johnson, LE
45 Epperson, FB	84 Lyons, LE
46 Farnsworth, TB	85 Kohn, RE
48 DuPriest, LB	86 Adams, LE
51 Rogers, RG	87 Payne, RE
53 Lopatka, C-LB	88 Russell, RE
54 Tidmore, C	89 Whittemore, RE
55 Tarrer, LG	

WILDCAT SQUAD

14 Beadles, QB	54 Shahid, LB
15 Ferguson, LB	56 Marvis, DT
16 Hart, LB	57 Sullivan, LB
18 Cloyd, DHB	60 Beirne, OG
19 Bair, QB	61 Yerdon, OT-OG
20 Jacobs, FLB	62 Boulware, DT
21 Abbott, S	63 D. King, DE
22 Fee, TB	64 Curling, DT-LB
24 Lyons, QB-TB	66 Wood, OG
27 Meighan, DHB	67 Wolf, OG
29 Weld, KS	68 Broadwater, DE
30 Greer, DHB	69 Koon, DE
31 Borne, DHB	70 Roberts, OT
32 Gann, TB	71 Freibert, OG-OT
33 Reynolds, FLB	72 Pursell, OT
34 Phaneuf, DHB	73 Joyce, DT
38 Blackburn, S	74 Drinnen, OT
40 Holland, LB	75 Palmer, DE
41 Britton, FB	76 Little, OT
42 V. King, LB	77 Rush, OG-OT
43 Beard, TB-FB	79 Katzenbach, DT
44 Valentine, OG	80 Thompson, OE
45 McClellan, DE	81 Anderson, FLB-OE
46 Duke, DHB	83 Potter, OE
47 Phillips, FB	84 Zeles, OE
48 Raynor, FB	85 Hazle, DE
49 Zaremba, DT	86 Mitchell, FB
50 New, LB	87 Van Meter, LB
51 Cartwright, C	88 Van Note, DE
52 Eckenrod, C	90 Hanson, DT
53 Conger, LB	

OFFICIALS

Referee E. D. Cavette	Umpire Cliff Norvell
Linesman Robert W. Gaston	Field Judge Paul Sprayberry
Back Judge Johnny Grace	ECO Ted Thomas

"COCA-COLA" AND "COKE" ARE REGISTERED TRADE-MARKS WHICH IDENTIFY ONLY THE PRODUCT OF THE COCA-COLA COMPANY. PRINTED IN U.S.A.

taste you never get tired of.



Here he comes . . . ready or not!

The world beckons and he's on his way—proud and independent.

He will need all the education he can get—college, even graduate school.

But there's a problem. Because enrollments are increasing every year, colleges must meet the expanding costs of providing more teachers and additional facilities.

You can help now.

Give to the college of your choice now to help assure his future . . . to help make sure that college is ready when he is.

**College is
America's Best Friend**



Published as a public service in cooperation with The Advertising Council and the Council for Financial Aid to Education.

KENTUCKY SPECIALISTS

PUNTING: Lyons (24), Beadles (14)
 PLACEMENTS: Lyons (24), Little (76)

INFORMATION

SERIES: UK Won 5, UG Won 13, Tied 2
 LAST UK WIN: 28-10 in 1965 (H)
 NEXT MEETING: October 26, 1968 at Lexington

**KENTUCKY
 Wildcats**

(SENIORS, Juniors, Sophomores)

FACTS ABOUT KENTUCKY

President Dr. John W. Oswald
 Athletic Director Bernie Shively
 Head Coach Charlie Bradshaw
 Publicists Ken Kuhn and Russell Rice
 Colors Blue and White
 Offense Pro Type

QE	QT	QG	C	SG	ST	SE
80 Thompson	74 Drinnen	67 Wolf	66 Wood	76 LITTLE	71 Freibert	83 Potter
42 V. King	72 Pursell	61 Yerdon	51 Cartwright	60 BEIRNE	70 ROBERTS	86 Mitchell
	TB	QB	FB	FLANKER		
	24 Lyons	19 Bair	48 Raynor	20 Jacobs		
	43 Beard	14 BEADLES	41 BRITTON	33 Reynolds		
	LE	LT	MLB	RT	RE	
	88 Van Note	64 CURLING	54 Shahid	62 Boultware	75 Palmer	
	68 Broadwater	73 Joyce	50 New	69 Koon	78 D. King	
	RLB	LHB	ROVER	SAFETY	RHB	
DEFENSE	87 VAN METER	34 Phaneuf	46 Duke	38 Blackburn	30 Greer	DEFENSE
	57 Sullivan	31 Borne	40 Holland	21 Abbott	18 Cloyd	

GEORGIA SPECIALISTS

PASSERS: Moore (14), Gilbert (10), Hampton (17)
 PUNTERS: Jones (11), Moore (14), Chandler (18)
 KO-FG-PAT: McCullough (36), Woodall (75)

SERIES INFORMATION

BIGGEST WIN: By Kentucky—26-0 in 1947 (Lexington)
 By Georgia—43-6 in 1945 (Lexington)
 AT LEXINGTON: UK Won 3, Georgia Won 6

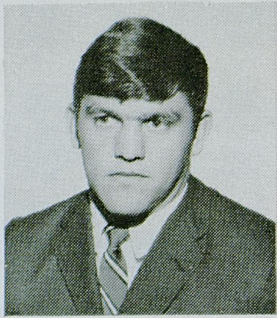
**GEORGIA
 Bulldogs**

(SENIORS, Juniors, Sophomores)

FACTS ABOUT GEORGIA

President Dr. Fred Davison
 Athletic Director Joel Eaves
 Head Coach Vince Dooley
 Publicists Dan Magill and Loran Smith
 Colors Red and Black
 Offense Wing T

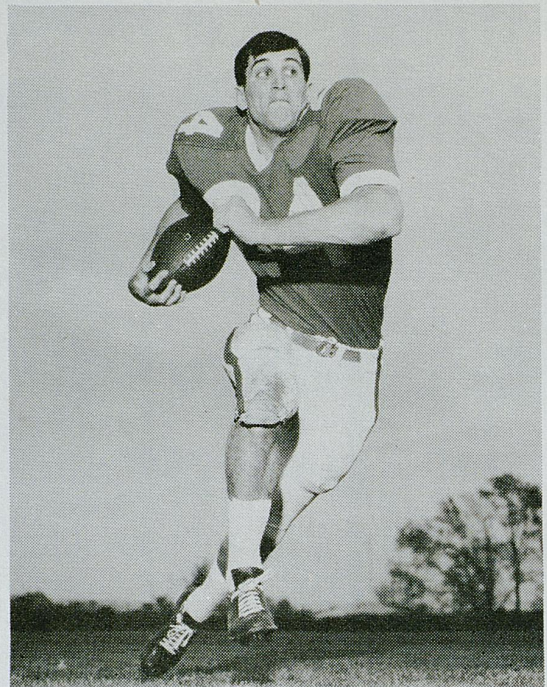
LE	LT	LG	C	RG	RT	RE
80 Hughes	70 Rholetter	67 HAYES	54 Tidmore	61 Rodrigue	71 CHANDLER	87 Payne
83 Johnson	78 Byrd	65 Layfield	56 White	64 Yawn	74 McGill	81 INGLE
	QB	TB	WB	FB		
	14 MOORE	24 Lawrence	33 KING	44 JENKINS		
	10 Gilbert	41 Johnson	39 Herlong	30 Kemp		
OFFENSE	LT	LG	RG	RT	RE	DEFENSE
	77 Stanfill	55 Tarrer	60 Greer	76 Smaha	85 KOHN	
	79 Young	51 Rogers	51 Rogers	72 HANDMACHER	88 Russell	
	LLB	RLB	LH	RH	S	
	57 Dicks	58 LAWHORNE	25 HOLMES	20 SELLERS	13 Scott	DEFENSE
	45 Epperson	35 MOSHER	16 Griffen	27 Pennington	19 Stewart	



DOYLE KING



VIC KING



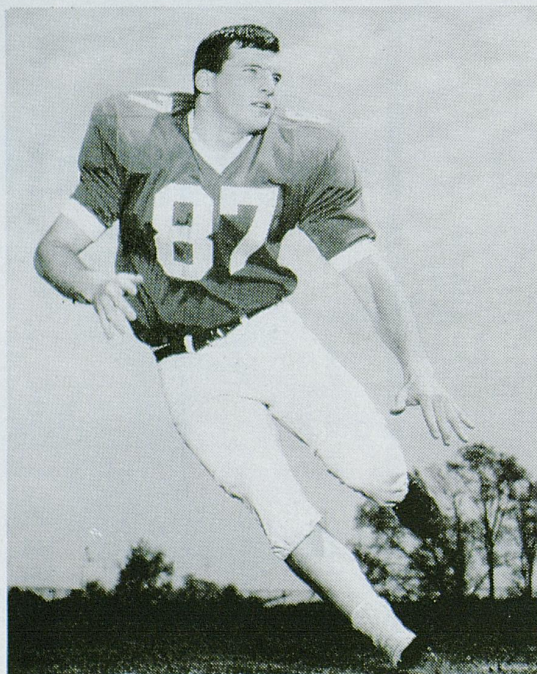
DICKY LYONS



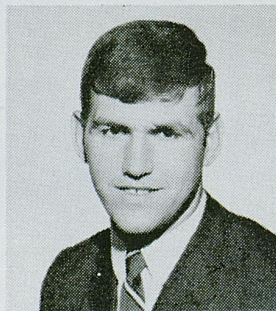
STEVE KOON



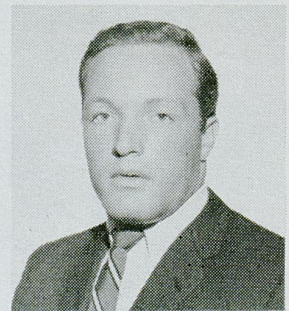
DWIGHT LITTLE



DOUG VAN METER



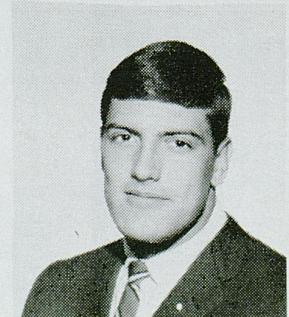
SAM MARVIS



GEORGE McCLELLAN



MIKE MEIGHAN



JIM MITCHELL

WLEX-TV

"Best in SPORTS"



CY FOLLMER
WLEX-TV
SPORTS DIRECTOR

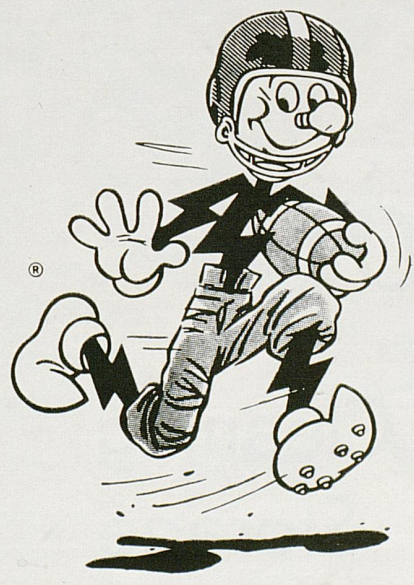
Presents

- SPORTS EXTRA 6:00 P.M.
- SPORTS FINAL 11:20 P.M.
- ● BOTH in FULL COLOR

NFL FOOTBALL 1967

32 GAMES

- ● ● ● ● Including ● ● ● ●
- Western Conf. Championship Dec. 23
- Eastern Conf. Championship Dec. 24
- NFL Championship Game Dec. 31
- And Many Top NCAA Bowl Games



LET'S GO!

GO!

GO!

GO!

ALL ELECTRIC

You meet the happiest people in an All-Electric home!

KENTUCKY UTILITIES COMPANY

KU

SYMBOL
of
SERVICE

Now In Lexington...

ONE OF THE SOUTH'S *Finest* Motels



110 Luxurious Rooms • Cocktail Lounge
Banquet & Meeting Rooms • Two Dining Rooms
Swimming Pool & Patio • Dancing Nitely



Imperial House Motel

U.S. 68 Waller Ave. at Harrodsburg Road
Phone 255-2540 for Reservations

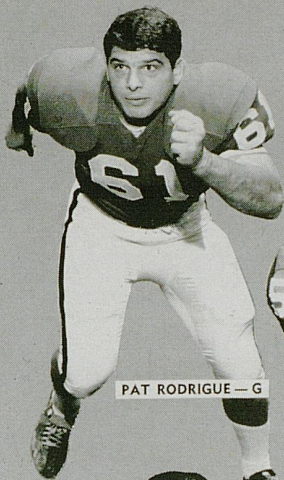
DeBoor

Laundry Dry Cleaning
Rug Cleaning Storage

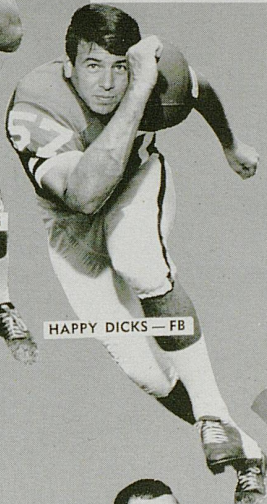
★ ★ ★ ★ ★ ★ ★ ★ ★ ★
KEEP FREEDOM
IN YOUR FUTURE
WITH
U. S. SAVINGS BONDS
★ ★ ★ ★ ★ ★ ★ ★ ★ ★



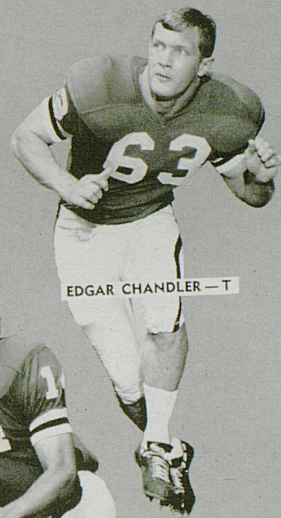
BULLDOGS



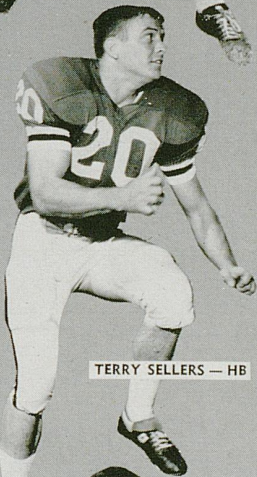
PAT RODRIGUE — G



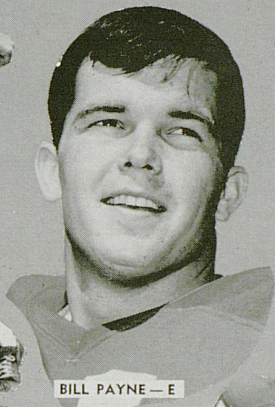
HAPPY DICKS — FB



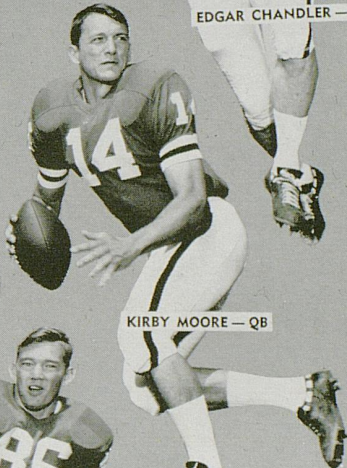
EDGAR CHANDLER — T



TERRY SELLERS — HB



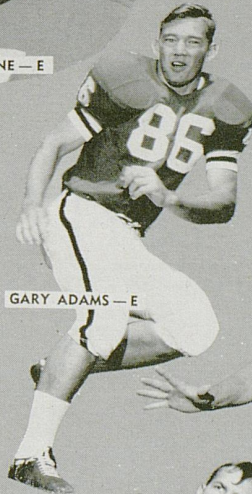
BILL PAYNE — E



KIRBY MOORE — QB



KENT LAWRENCE — TB



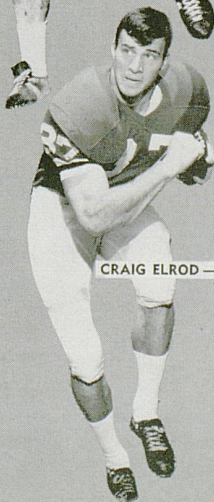
GARY ADAMS — E



BRAD JOHNSON — FB



RONNIE JENKINS — FB



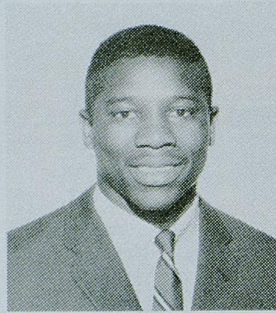
CRAIG ELROD — TB



JAKE SCOTT — DB



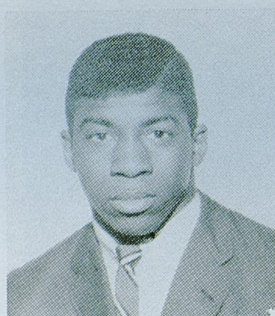
MARTY NEW



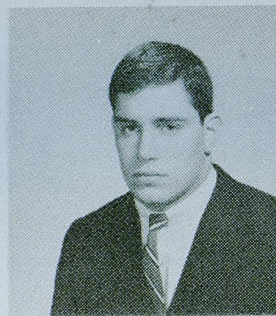
NAT NORTHINGTON



CHUCK BLACKBURN

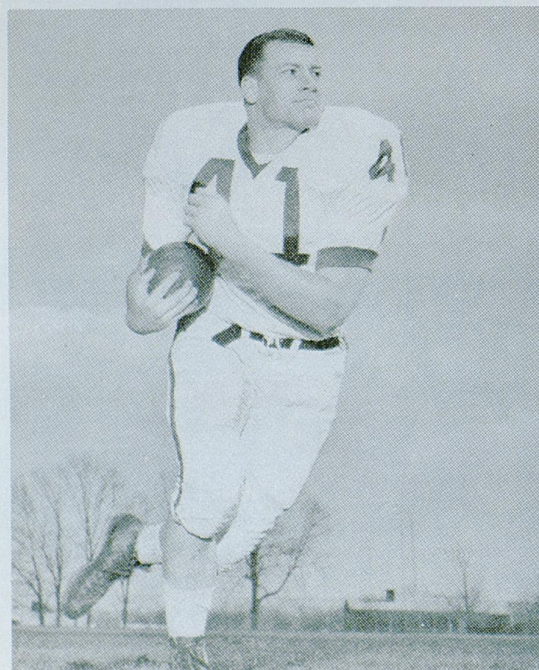


GREG PAGE



DICK PALMER

KENTUCKY



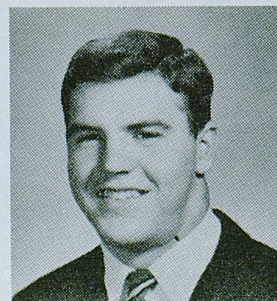
DON BRITTON



AL PHANEUF



RONNIE PHILLIPS



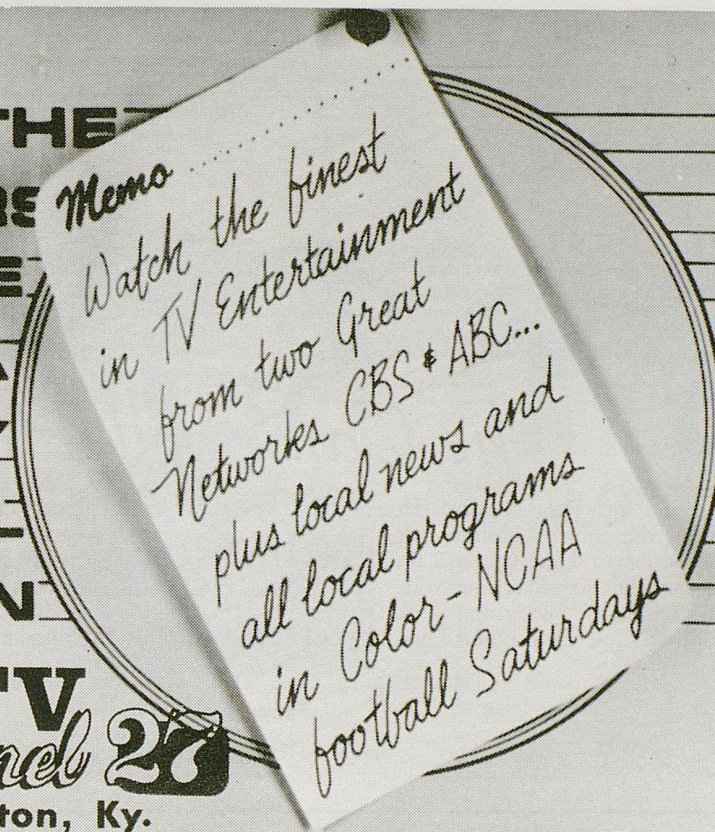
DEREK POTTER



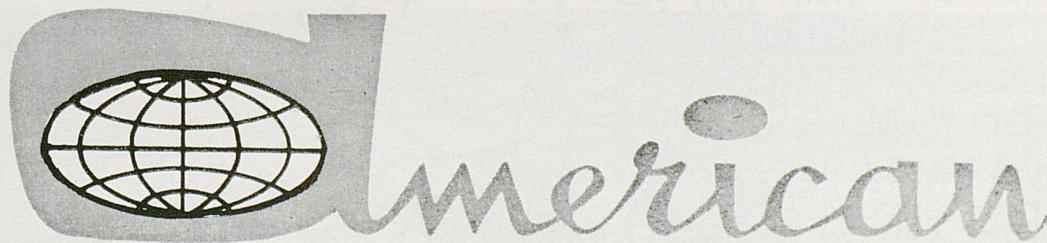
DAVE PURSELL

**YOU'RE IN THE
WINNERS
CIRCLE
FOR A
VERY
SPECIAL
SEASON**

WKYT-TV
Channel 27
Lexington, Ky.
KENTUCKY CENTRAL TELEVISION



Support U. of K. Football



BUSINESSMEN'S LIFE INSURANCE COMPANY

144 SOUTHLAND DRIVE LEXINGTON, KENTUCKY 40503 PHONE 278-2351

Be A Wildcat Booster



The Campbell House

Nothing matches The Campbell House for fun or food. The superb cuisine of the Plantation Room (winner of the coveted Holiday Magaine excellence award for several years) will make your stay a memorable experience. Here you will find a happy blending of traditional Kentucky hospitality and every modern convenience; luxurious suites and rooms, beautiful Dining Room, Cocktail Lounge with sparkling entertainment, Swimming Pool, Gift Shop, Dress Shop, Barber Shop and Beauty Salon. Adjacent to Par Three Golf Course and Driving Range. May we have the pleasure of serving you soon?

Harrodsburg Road • Lexington, Kentucky
Phone 255-4281

LEN SHOUSE III, President

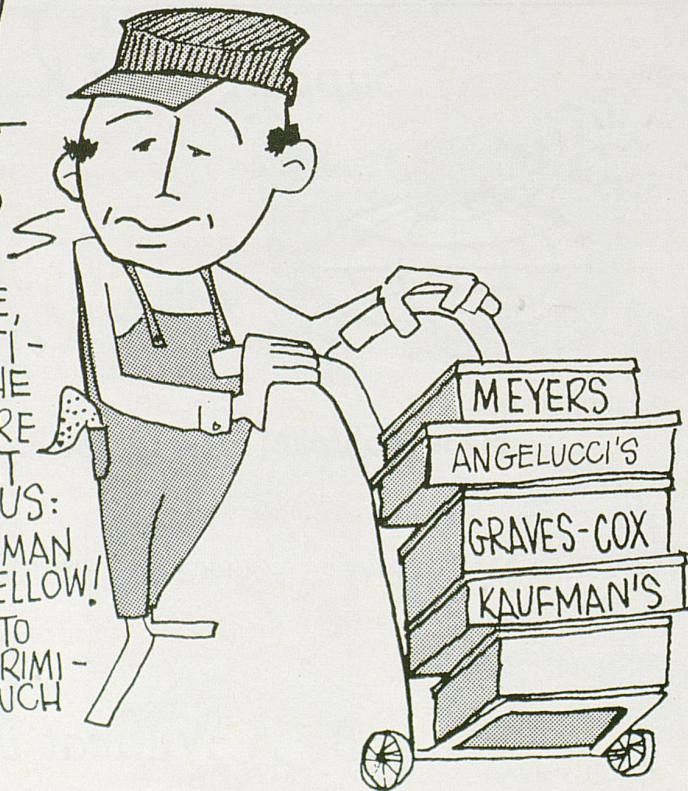
CONGRATULATIONS SIR!

DID YOU KNOW THAT YOU & THE MEN YOU SEE AROUND YOU ARE AMONG THE BEST DRESSED MEN IN THIS WHOLE U.S.A.?

IT'S A FACT! HERETOFORE, THOSE FAST HORSES & BEAUTIFUL WOMEN HAVE STOLEN THE SHOW, BUT MAYBE THEY ARE THE STRIKING PROOF OF WHAT OUR MANUFACTURERS TELL US:

THE BLUE GRASS GENTLEMAN IS A MOST DISCRIMINATING FELLOW!

AND WE FEEL HONORED TO HAVE DRESSED SO MANY DISCRIMINATING GENTLEMEN FOR SUCH A LONG WHILE.



University of Georgia



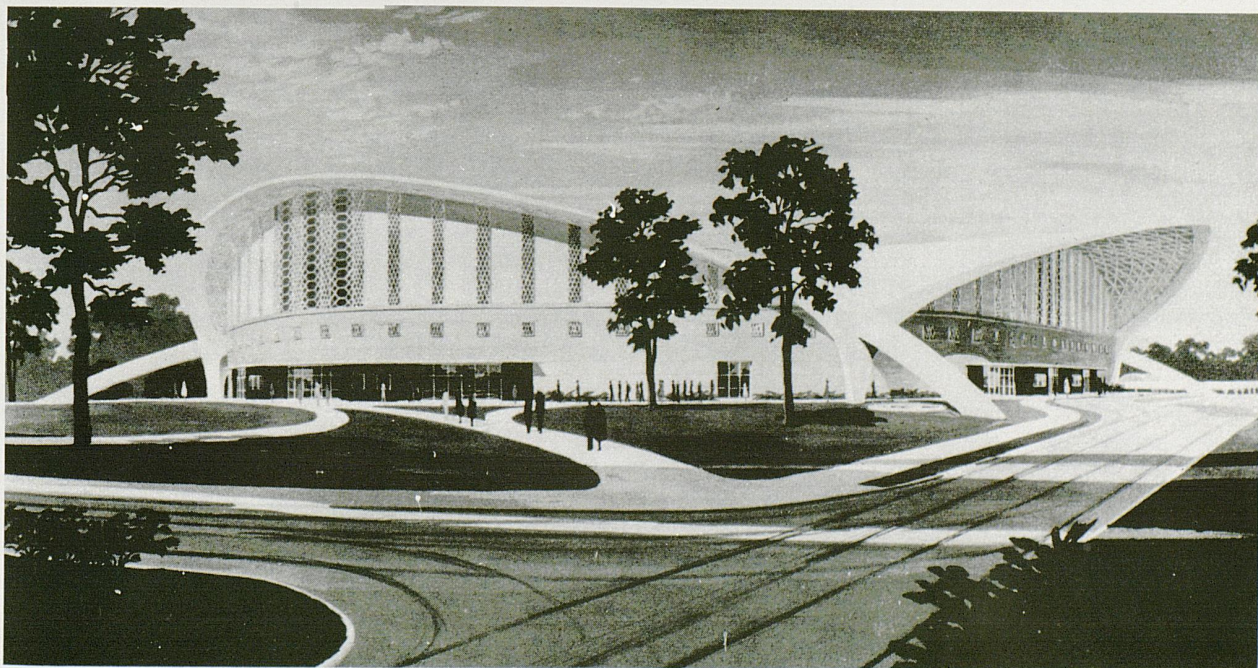
VINCE DOOLEY
Head Football Coach



JOEL EAVES
Athletic Director



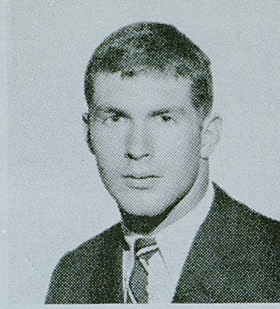
O. C. ADERHOLD
President



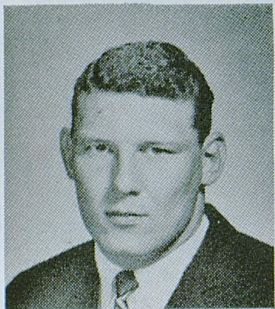
GEORGIA'S NEW \$3,000,000 COLISEUM



KEITH RAYNOR



JAY REYNOLDS



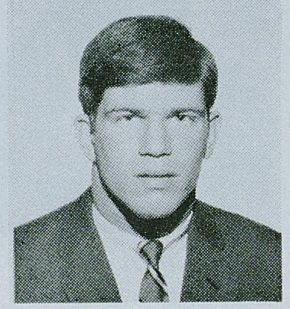
RONNIE ROBERTS



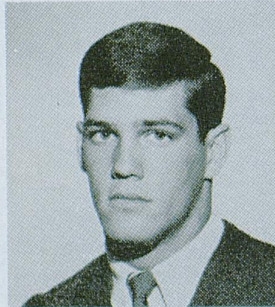
LEN RUSH



CARY SHAHID



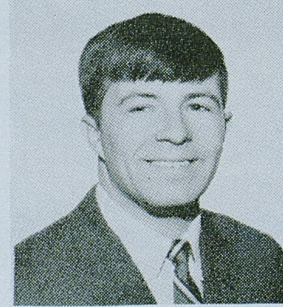
DAVE SULLIVAN



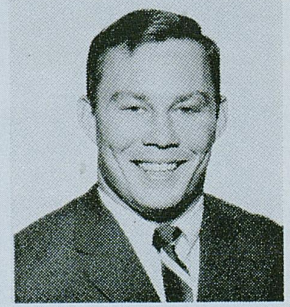
PHIL THOMPSON



SCOTT VALENTINE



DAVID WELD



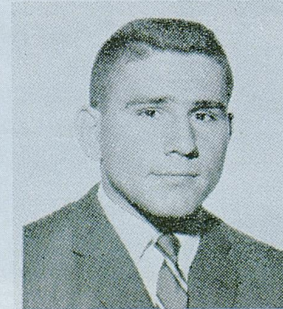
LOUIS WOLF



KENNY WOOD



MARTY YERDON



ED ZAREMBA



JOHN ZELES

We at HUNT'S are pleased to supply to the University of Kentucky Athletics Association merchandise manufactured by the following firms:

Adidas—Track Shoes

Bike Web Company—Trainer's Supplies

MacGregor—Football Uniforms and Equipment
for Football, Baseball, and all Sports

Cramer Chemical Company—Trainer's Supplies

Fair Play Scoreboard Company—Football Score-
board and Basketball Scoreboard

Johnson and Johnson—Trainer's Tape

King O'Shea Company—Basketball Uniforms

Powers Mfg. Company—Award Jackets

Wilson Sporting Goods—Footballs and Basketballs

Spanjian of Pasadena—Football and Baseball
Uniforms

Sports Equipment Co.—SECO Athletic Supplies

Hillerich and Bradsby Company—Louisville Slugger
Bats

We are grateful to the above manufacturers who sponsor this ad.

HUNT'S ATHLETIC GOODS CO., INC.

"We Ship The Day You Buy"

MAYFIELD, KENTUCKY

**New and "USED" Book Center on Campus
in the
STUDENT CENTER**

UNIVERSITY BOOK STORE

UK GLASSWARE

UK SWEATSHIRTS

UK PENNANTS

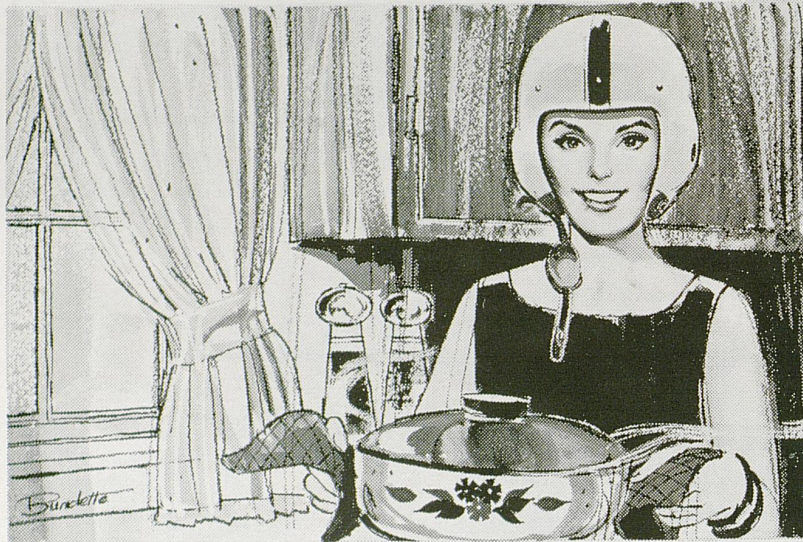
UK JEWELRY

UK SOUVENIRS

UK DECALS

Touchdowns and Stew

by MARIAN ROGERS



DO YOU have a "pigskin" pantry?

Thousands of American women have so that everyone in the family can enjoy the football game and still get balanced meals to offset that unbalanced line which may be playing the devil with the team's chances of winning.

The "pigskin" pantry, adaptable to any climate, contains shortcuts for meals before, after or during the game.

If you keep your family well-fed during football mania, you'll avoid getting "fed-up" and still score with Dad, the kids, friends and yourself. Women have taken to football in ever-increasing numbers and quick meals are their salvation.

To keep an eye on the action, plan foods that can be cooked and frozen ahead of time, then simply reheated. Try the "meal-in-a-pot" which cooks untended. Also, ranges with timers and temperature controls can untie your apron strings, freeing you to relax at the stadium or in the den.

If you're game-bound, eat a late breakfast. Then, with a snack during the game, you'll be ready for a bubbling casserole dish with a bean salad, fruit jello, packaged rolls and coffee or tea when you return home.

A life-saver for today's woman whose schedule is as jammed as the lengthening football season is beef stew prepared and frozen a month before the big clash.

Thaw the stew overnight in the refrigerator. Reheat it over a low fire,

and serve with frozen peas and carrots. Do not add sour cream to beef stroganoff until after it has been reheated.

Onion-topped green bean casserole makes a wonderful teammate for "scoreboard stroganoff." It can be put together almost as fast as the quarterback can complete a pass to paydirt. Rolls, a fruit cup, assorted cookies and coffee round out this gridiron gourmet specialty.

Thanksgiving Day football games conflict with this patriotic meal. However, housewives can switch from mid-day to an after-game feast. You can use your automated range or bake your turkey at a low, steady temperature, putting it in the oven just before piling in the car for the football field. When you get back to the kitchen, the finishing touches don't take long. Cranberry jelly or sauce and dessert are already prepared. Whip up the gravy and mash the potatoes. Potato buds in a package merely require warmed milk, butter and seasoning.

Thus your Thanksgiving dinner can be on the table in less than a timeout period.

If it's cold, set a roaring fire in the fireplace. Rush out a tray of zippy hot soup drinks to melt the frost in their radiators. How about cream of asparagus soup with crumbled Roquefort cheese and a sprinkling of chives? Put extra "third down" punch in black bean soup with a splash of orange liqueur. Or be generous with gin and lemon juice to bring out the

best in a pot of broth.

Companions for the soup chill-cures are mixtures of olives, nuts and stuffed French bread slices. Scoop out the soft centers of small-size French loaves early in the day. Fill them with tuna salad, deviled ham and grated cheese or peanut butter and chutney spread.

To "cool" it after a game in 90 degree weather, include cold drinks, fruit plates, and salads, "store-bought" frozen desserts or a summer luncheon menu.

Good thirst quenchers are sunshine fruit punch, club soda iced tea punch and iced coffee. Sunshine punch calls for one cup orange juice, one cup unsweetened pineapple juice, one-fourth cup lemon juice, one-fourth cup maraschino cherry juice, one cup dry ginger ale, two tablespoons of honey and one pint of vanilla ice cream. Mix juices, ginger ale and honey. Add ice cream and stir until blended. Serve topped with maraschino cherries. Makes one and one-half quarts.

The club soda iced tea punch would make the team's water boy throw away his bucket. Steep one and one-fourth pound of tea leaves with one quart of boiling water for five minutes. Next boil together four cups of sugar and four cups of water for five minutes, then add to tea. Pour in one quart of lemon juice and an equal amount of orange juice plus one No. 5 can of pineapple juice. Mix in two quarts of club soda. Makes seven quarts that will slake your family's thirst and leave enough for the entire football team.

Cold cantaloupe can be a winner with scoops of softened cream cheese, crunchy with pecans. Or maybe coconut banana rolls? They're easy. Dip banana sections in lemon juice and honey, and sprinkle with coconut. Serve with cream cheese softened with fruit juice. Garnish with red, flavored gelatine or jellied cranberry sauce.

The makings of a cold menu treat after the final quarter include cold sliced ham, toasted rolls, hot baked beans, a relish and baked frozen cupcakes. Finish off with coffee. Take canned baked beans, add molasses, brown sugar, catsup, mustard and bacon. Only takes a jiffy and you haven't missed a single play on the TV screen.

With these shortcuts to gridiron cookery with a gourmet touch, don't be surprised if your family chooses you for the All-America team of housewives. Isn't it easy to join in on the football fun?



Frisch's

THE ORIGINAL

BIG BOY

LEXINGTON

Insurance Agency, Inc.

"Complete Insurance Service"

Kentucky Central Building

Phone

252-5576

CARRY OUT ORDER SERVICE

Phone 277-5211 — We'll have your order in a jiffy — Piping hot.



Italian

Spaghetti

Pizza

Steaks

Ruben Sandwiches

"DOODLES"

1915 South Lime

Phone 277-5211

Restaurant-Cocktail Lounge

MAGNA-GRAPHIC

INC.

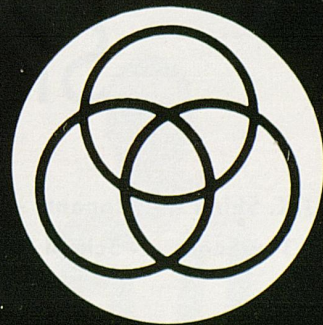
MANUFACTURERS OF FINE PRINTING PLATES

Offset — Photo-Engravings — Matrices

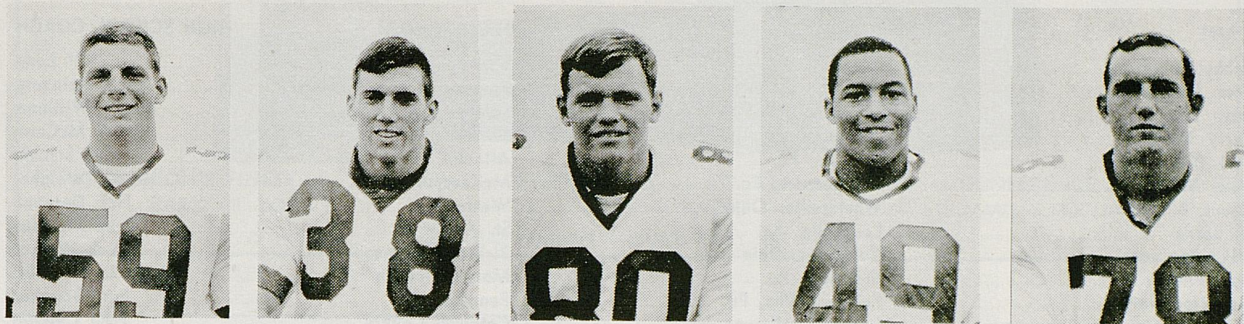
Four Color Process Separations

430 WEST SHORT ST.

LEXINGTON, KY.



MEET THE "KITTENS"



GAFFRON

GODWIN

GREER

HACKETT

HARDT

WINSTON GAFFRON—One of five Kittens snatched out of Volunteerland, Gaffron hails from Brownsville, Tenn.—where he prepped in outstanding fashion on the gridiron at Haywood High . . . Operated chiefly at end both ways as a schoolboy, earning second team All-State honor . . . Trying now for job at offensive center . . . Also a member of West squad in Tennessee All-Star Game last year . . . Has ambition to become an engineer.

AL GODWIN—Parlayed a great high school career into a starting wingback post for the UK freshmen . . . Paced his schoolboy team to an 11-1 record and class AAAA title in '66 . . . Registered a combined offense of 1,477 yards on 133 rushing carries and 20 pass receptions during 12 game season at Broughton High in Raleigh, N. C. . . . Picked on first All-State unit and played in North Carolina All-Star Game and Shrine Bowl.

ROGER GREER—Blessed with good size (6-3, 195), this Jenkins, Ky., product has won a starting job at offensive end in his opening collegiate campaign . . . Through the Kittens' first three games, he ranked right behind teammate Al Godwin in pass receiving with five catches netting 41 yards . . . Playing with the Jenkins Cavaliers, Roger scored 145 points in 11 games during his senior year . . . Third team All-State at fullback-end . . . Brother Phil is UK varsity regular.

WILBUR HACKETT—This hustling young Negro grid star, one of the prize recruits in the state last year, is living up to every inch of his reputation in his rookie collegiate season . . . As a starting defensive halfback, he has been a consistent "thorn in the side" of enemy receivers and ball carriers . . . The speedy former Louisville Manual All-American also paces Kittens in punt returns with eight runbacks netting 64 yards.

DAVID HARDT—Classed by many authorities as one of top punting specialists that Kentucky has had in recent years, Hardt has booted consistently at a 40-yards-per-kick average . . . Also operates as an offensive tackle regular with good size at 6-4, 220 . . . Prepped

at Attleboro (Mass.) High and Staunton Military Academy . . . First team All-State and All-Military.

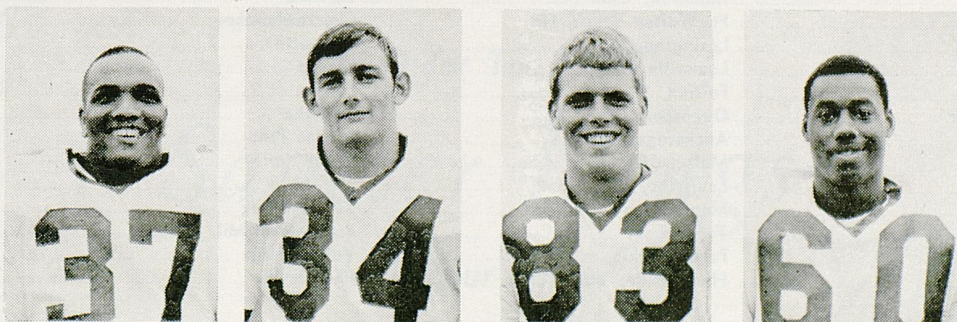
HOUSTON HOGG—A promising young halfback from Owensboro, Ky., Houston started his college career as a tailback but has since switched to the defensive platoon and shows up well as a secondary defender . . . Turned in an outstanding schoolboy career at Daviess County high where he was tutored by former Wildcat Waymond Morris . . . Third team All-State mention.

DAVID HUNTER—From the hills of Arkansas to stardom in the Southeastern Conference as a Kentucky Wildcat is a big jump, but Dave Hunter gives every indication of making it . . . Won starting job at tailback with UK Kittens for first three games . . . Second leading ground gainer through three games with 199 yards on 54 trips . . . First team All-State halfback and outstanding decathlon man in track at Pine Bluff (Ark.) High School.

BOBBY JACKSON—Two-time All-State mention while operating at quarterback, fullback and defensive end at Louisville's Seneca High School where he was coached by ex-UK Wildcat Ron Cain . . . Redskins copped state AAA championship in 1965 on a 10-1 record . . . Also starred in swimming and track . . . Holds down starting job as Kittens' defensive right end.

KENNEDY JACKSON—Although carrying the same family name and working also on the UK Kittens' defensive platoon, Kennedy is no relation to teammate Bobby Jackson . . . Kennedy hails from Bloomington, Ind.—home of the IU Hoosiers—and prepped at University High . . . He operates as a defensive halfback for the Kentucky Freshmen.

ALBERT JOHNSON—An early knee injury cost Albert Johnson a chance to thoroughly prove himself as a collegian . . . The scrappy young Negro from Louisville should come along fast next year as he learns lessons missed this season—providing the ailing joint is strong enough for vital contact work in spring drills . . . Johnson was a late addition to the UK frosh roster . . . Prepped at Louisville's Thomas Jefferson High . . . Listed as guard-center candidate.



HOGG

HUNTER

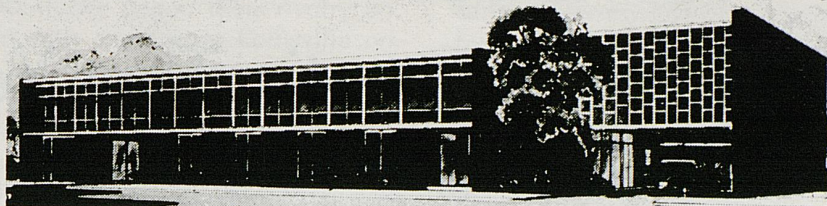
B. JACKSON

JOHNSON

VARSITY ALPHABETICAL FOOTBALL ROSTER

NAME	HOMETOWN	HIGH SCHOOL	HIGH SCHOOL COACH
Bobby Abbott	Kingston, Tenn.	Roane County	Bill Long
Tom Anderson	Birmingham, Ala.	Ramsay	Dick Steinberg
Dave Bair	Greensburg, Pa.	Salem	Robert Williams
Terry Beadles	Fulton, Ky.	Fulton	Frank McCann
Dick Beard	Altoona, Pa.	Altoona	Earl Strohm
Mike Beirne	McKeesport, Pa.	McKeesport	Harold Weighel
Chuck Blackburn	Westerville, Ohio	Westerville	Nck Decenzo
Al Borne	Louisville, Ky.	St. Xavier	John Meihaus
Mike Boulware	Columbus, Ohio	Bishop Watterson	Dick Walker
Don Britton	Broomall, Pa.	Marple-Newton	Lou Bonder
Jim Broadwater	Fairless Hills, Pa.	Pennsburg	Earl Baugher
Bill Cartwright	Princeton, Ky.	Caldwell County	Fred Clayton
Rod Clloyd	Lawrenceburg, Ky.	Anderson	Bob Kincer
Fred Conger	Feasterville, Pa.	Neshaminy	John Petercuskie
Kerry Curling	Princeton, Ky.	Caldwell County	Fred Clayton
Dennis Drinnen	Loveland, Ohio	Loveland	Stanley McCoy
Bill Duke	Owensboro, Ky.	Daviess County	Maymond Morris
Pat Eckenrod	Chattanooga, Tenn.	Notre Dame	Tom Clary
Tom Fee	Uniontown, Pa.	Senior	Bill Powers
Tom Ferguson	Ashland, Ky.	Blazer	Rex Miller
Bob Freibert	Louisville, Ky.	Bishop David	Dennis Nash
Roger Gann	Fayetteville, N. C.	Fayetteville	Red Wilson
Phil Greer	Burdine, Ky.	Jenkins	Raymond Ricketts
Dave Hanson	Greensburg, Pa.	Hempfield Area	Bill Abraham
Rodger Hart	Albertville, Ala.	Albertville	G. B. Beasley
Bill Hazle	Hodgenville, Ky.	LaRue County	Clarence Caple
Don Holland	Worthington, Ohio	Bishop Watterson	Dick Walker
Joe Jacobs	Hobbs, N. M.	Hobbs	Bob Burris
Marty Joyce	Wilmington, Del.	Salesianum	Dim Montero
George Katzenbach	Philadelphia, Pa.	Roxborough	Fred Hauser
Doyle King	Mt. Sterling, Ky.	Mt. Sterling	Pat Dale
Vic King	Kingston, Tenn.	Roane County	Bill Long
Steve Koon	Hopkinsville, Ky.	Hopkinsville	Fleming Thornton
Dwight Little	Marion, Ky.	Crittenden County	Bill Huff
Dicky Lyons	Louisville, Ky.	St. Xavier	John Meihaus
Sam Marvis	Mt. Pleasant, Pa.	Mt. Pleasant	Ed Hogan
George McClellan	Bristol, Tenn.	Tennessee	Clayton Powers
Mike Meighan	Avonmore, Pa.	Kiski Area	Richard Dilts
Jim Mitchell	Louisville, Ky.	Flaget	James Kennedy
Marty New	Hamilton, Ohio	Hamilton Taft	Fred Garretson
Dick Palmer	Huntsville, Ala.	Okinawa-Kubasaki	Ed Banks
Al Phaneuf	Montreal, Canada	Rosemount	Brian Ash
Ronnie Phillips	Grundy, Va.	Grundy	Brownie Cummins
Derek Potter	Elkhorn City, Ky.	Elkhorn City	Jack Hall
Dave Pursell	Morrisville, Pa.	Pennsburg	Earl Baugher
Keith Raynor	Raleigh, N. C.	Frederick Mil. Acad.	Emory Davis
Jay Reynolds	Perryville, Ky.	Boyle County	Dennis Sexton
Ronnie Roberts	Louisville, Ky.	Manual	Tom Harper
Len Rush	Hamilton, Ohio	Garfield	Lou Florio
Cary Shahid	Ft. Walton Beach, Fla.	Choctawhatchee	Wyman Townsel
Dave Sullivan	Lexington, Ky.	Lafayette	Eddie Sellier
Phil Thompson	Louisville, Ky.	Seneca	Ron Cain
Scott Valentine	Fairfax, Va.	Fairfax	Richard Claypool
Doug Van Meter	Owensboro, Ky.	Catholic	Don Netoskie
Jeff Van Note	Anchorage, Ky.	St. Joe Prep	Dick Blocker
David Weld	Malvern, Pa.	Great Valley	Al Como
Louis Wolf	Louisville, Ky.	St. Xavier	John Meihaus
Kenny Wood	Montgomery, Ala.	Robert E Lee	Tom Jones
Marty Yerdon	Troy, N. Y.	Bordentown Mil. Acad.	Jay Luisi
Ed Zarembo	Parma, Ohio	Valley Forge	Jim Fritzsche
John Zeles	Phoenixville, Pa.	Phoenixville	Paul Tomko

The Downtowner Motor Hotel



LEXINGTON'S FINEST — 155 ROOMS — RESTAURANT — COCKTAIL LOUNGE — CONFERENCE ROOMS
 PARK AT YOUR FRONT DOOR — TV — HI-FI — RADIO — PHONES — SWIMMING POOL
 347 EAST MAIN — JUST EAST OF ROSE

Planning to Visit

HAWAII, MEXICO, WEST INDIES, HONG
 KONG, AUSTRALIA, BERMUDA,
 EUROPE, NASSAU, AFRICA, INDIA
 OR ANYWHERE IN THE WIDE,
 WIDE WORLD?

Contact

ALL-AMERICAN TOURS, Inc.

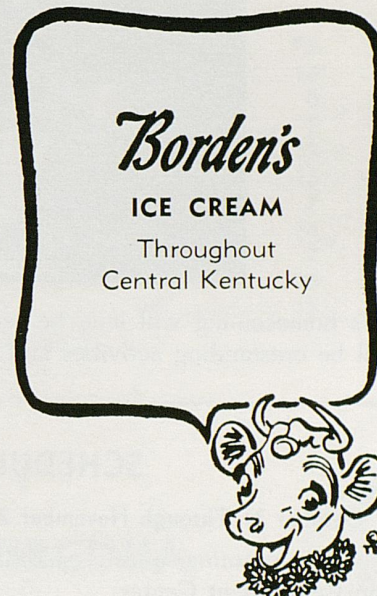
*Lexington's Oldest Travel Agency—
 Established 1932*

Phoenix Hotel Bldg. Telephone 254-5729

We Have an Attractive Program of Cruises
 and Tours (both escorted and independent)
 to Practically all Parts of the World.

A L S O

WE SPECIALIZE IN AIRLINE RESERVATIONS
 —FOR BOTH BUSINESS AND PLEASURE



576 E. Third St. — Phone 254-2855

R

"No Order Too Small"

R

Sageser Drugs

"Ask Your Doctor"

R

R

HOMECOMING '67

Something Fantastic This Year



This year's homecoming will long be remembered as one of the best, if not the greatest homecoming ever. There will be outstanding activities and events for everyone—alumni, faculty, and students.

SCHEDULE FOR HOMECOMING '67

October 31 Through November 2

Voting for homecoming queen candidates takes place in the Student Center.

November 2, Thursday

6:00—Torch-Light Parade to Hagin Field.

6:30—PEP RALLY and BONFIRE at Hagin Field, the Queen Finalists are announced.

November 3, Friday

4:00—House Displays will be judged.

8:00—AL HIRT CONCERT at Memorial Coliseum.

November 4, Saturday

9:30-12:00—Alumni Registration at the Alumni House.

11:00-1:00—Alumni, Faculty, and Student Barbecue at the intramural field next to the Student Center—\$1.00 per person.

2:00—KENTUCKY vs. WEST VIRGINIA. Homecoming Queen will be crowned at half-time.

4:15-6:15—RECEPTION at the Alumni House featuring Allen Stanfill at the piano. Alumni, faculty and students are invited—punch and cookies will be served.

8:30-12:30—Homecoming Dance with the Marauders in the Student Center Ballroom—also, Bert Mason appearing in the "Grill".

9:00-1:00—Alumni Dance with the Chet Cline Band in the Phoenix Convention Hall—admission \$2.00, no reservations needed.

DON'T FORGET

AL HIRT IN CONCERT NOV. 3

SERIES HISTORY OF KENTUCKY-GEORGIA RIVALRY

Georgia and Kentucky began their rivalry on the football field with a game at Louisville on Oct. 21, 1939. The two schools met almost annually from that time until the series was broken off after the 1949 game and not resumed until 1956 with a game at Athens. During the 22 years that Wally Butts tutored the Bulldogs (1938-60), Georgia laid claim to nine victories in the 14-game series. Kentucky took the initial game in 1939 and tied the following year, but it was 1947 before it picked up another win. All told, UK shows but five victories with the last in 1965. Despite Georgia's superiority, the

series generally has been interesting as reflected by the fact that Butts' four SEC championship outfits managed an average win margin of only 11 points over Kentucky. Demonstrating the frustrating turn that the series has taken in recent years is the fact that only 15 points separated the two clubs in the five meetings preceding a 21-7 loss by Kentucky three years ago. In 1965, the Wildcats smacked Georgia with its worst defeat of the campaign—a 28-10 lacing representing the most points ever scored by UK in the series.

Series Scores

	Ky.	Georgia		Ky.	Georgia
1939 (N)	13	6	1957 (H)	14	33
1940 (A)	7	7	1958 (A)	0	28
1942 (N)	6	7	1959 (H)	7	14
1944 (A)	12	13	1960 (H)	13	17
1945 (H)	6	43	1961 (A)	15	16
1946 (A)	13	28	1962 (A)	7	7
1947 (H)	26	0	1963 (H)	14	17
1948 (A)	12	35	1964 (A)	7	21
1949 (H)	25	0	1965 (H)	28	10
1956 (A)	14	7	1966 (H)	15	27

(Kentucky won 5, Georgia won 13, ties 2)

Preview of Coming Attractions

KENTUCKY vs. WEST VIRGINIA (Homecoming Game)

Playing One Week From Today On Stoll Field

FACTS ABOUT THE MOUNTAINEERS

COACH—Jim Carlen—Second year at West Virginia

1966 Record—Won 3, Lost 5, Tied 2

Last Year's Score—West Virginia 14, Kentucky 14

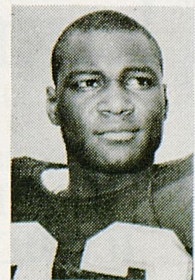
Chief Losses—SE Jim Sypult, WB Steve Edwards, FB John Piscorik, KS Chuck Kinder.

Top Returnees—TB Garrett Ford, Sr.; DE Danny Williamson, Sr.; DB John Mallory, Sr.; LB Baker Brown, Jr.

Outlook—Garrett Ford and 21 other returning lettermen give West Virginia a rosier outlook as Coach Jim Carlen enters his second year as head coach. Ford, a 6-2, 222 lb senior tailback, carried 236 times for 1,068 last year (4.5 average) to rank sixth nationally. He's backed this season by experienced quarterbacking, with juniors Pete Secret and Tom Digon battling for the job. Weakside tackle George Begalla and strongside guard Bob Cummings are the offensive line leaders while John Mallory, one of the nation's top secondary and runback men, remains at the free safety position after a brief try at wingback. Baker Brown, Ron Yuss and Carl Grennel appear to give WVU its best linebacking corps in years. Loss of 20 lettermen left big holes at fullback, wingback, tight end and defensive tackle, but the Mountaineers feel they have the horses to fill those vacancies.



COACH
JIM CARLEN



GARRETT FORD—TB

1967 FRESHMAN SCHEDULE
AND RESULTS

Date	Opponent	Site	UK	Opp.
Oct. 6	Va. Tech Frosh (H)	12	0
Oct. 13	Cincinnati Frosh (A)	6	9
Oct. 20	Tennessee Frosh (H)	20	27
Oct. 28	Vanderbilt Frosh (Away)	7:30 p.m.	CST

1966 RESULTS (Freshmen)
(Won 3, Lost 1)

UK	Opp.
14	Tennessee Frosh (A) 21
37	Va. Tech Frosh (A) 8
20	Cincinnati Frosh (H) 14
42	Vanderbilt Frosh (H) 8
113	51



"IRRESISTIBLE" Your Home in Modern, Provincial

or Early American, by . . .



Established
1893

ROBERTS
Furniture Company

• Open Monday Night
to 9 . . . for Your
Shopping Pleasure!

425 W. MAIN • FREE PARKING AT SIDE DOOR

Lexington Yellow Cab Co.

Inc.

ALL
RADIO CABS

Dial 252-2231

ALL
RADIO CABS

UNIVERSITY OF KENTUCKY

“WILDCAT”



FRED M. DART *Director*

JOE RASMUSSEN .. *Asst. Director*

JOHN CARR .. *Assistant Director*

BRIAN GORRELL *Drum Major*

JO ANN WINDISH *Twirler*

JOHN EDMONSON *Arranger*

GLENN TAYLOR *Artist*

Theme of Show

PRECISION MARCHING

<i>Formations</i>	<i>Music</i>
ENTRANCE	Amparito Roca
PRECISION DRILL	National Emblem
TWIRLING ROUTINE	Up! Up! and Away
KALEIDOSCOPE	Billboard March
SCRIPT CATS	Dixie



MILLER WELCH



DONALD ROSE

CARPENTER-WARREN

INSURANCE AGENCY
Since 1927

137 N. Upper St. PHONE 252-6691 Lexington, Ky.

ALL FORMS
OF INSURANCE



STANLEY DOERTING



You're Always Welcome At . . .

Begley's

WALGREEN AGENCY DRUG STORES

IN LEXINGTON

- ★ 69 Eastland Shopping Center
- ★ Northland Shopping Center
- ★ 878 East High Street
- ★ 404 Southland Drive
- ★ 1743 Alexandria Drive

SERVING THE BEST

IN

DRUG STORE NEEDS

SINCE 1921

16 DRUG STORES IN KENTUCKY

BUSTER BROWN
FB Equip. Mgr.

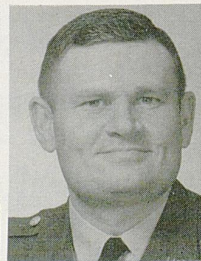
C. W. BRUNER
Fields Supt.

HARVEY HODGES
Ticket Mgr.

KEN KUHN
Information Dir.

BRUCE MARTIN
Rifle

AL MORGAN
Supervisor
Student Admissions



WILDCAT HEAD COACHES AND ATHLETICS STAFF



WYNN PAUL
Swimming
Water Polo



ADOLPH RUPP
Basketball



JOE SHANNON
Baseball



DICK VIMONT
Tennis



PRESS WHELAN
Track



HUMSEY YESSIN
Golf

BACK THE
KENTUCKY
WILDCATS



SECOND TO
NONE IN
THE SEC

SECOND NATIONAL BANK and TRUST CO.
Second to None in Banking

Dixie Bell Dairy Company

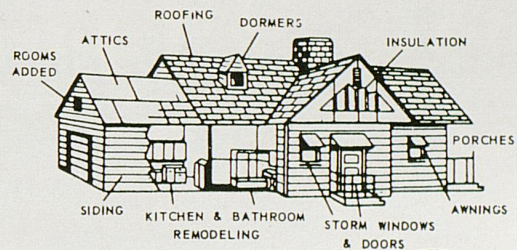
**"The Largest and Only Locally
Owned Dairy Serving
Central Kentucky"**



315 North Limestone Street
LEXINGTON, KY.

**For All Types of Remodeling
Commercial or Residential**

"Your Best Bet is Cornett"



Dial 254-8871

Recreation Rooms - Garages
Custom Kitchens - Room Additions



Cornett Construction Co.

1077 S. Broadway

Lexington, Ky.

Two Big, Modern Department Stores To Shop In

BEN SNYDER

DOWNTOWN • EASTLAND SHOPPING CENTER

Open a Ben Snyder Charge Account for Fast, Easy Shopping

UK Library Ranks In Top 25 Growth Brings New Problems



Providing study space for 15,000 students is a major problem facing library officials.

What would you do if more than 1300 books arrived at your home each week?

That's the problem facing Dr. Stuart Forth, director of the University of Kentucky libraries.

During the current school year, the University of Kentucky will receive some 70,000 volumes in addition to 100,000 government publications, manuscripts and documents.

This influx of new books will send the total UK collection over the 1,200,000 mark and reinforce its lofty position among the top 25 libraries of the nation as rated by the prestigious Association of Research Libraries.

Already the Kentucky collection is larger than those at Tennessee, Penn State, Purdue, Maryland, Cincinnati, Texas A. and M., Iowa State, Notre Dame, Pittsburgh, M.I.T., New York University and other institutions with enviable reputations.

Dr. Forth, a native of Michigan who came to Kentucky two years ago, is pleased with the pro-

gress of his operation. He points out that in 1909, when the first library was established on the campus, there was one librarian. Today there are 60 professionals and 70 clerks.

After such a recitation of facts and figures, the grin turns to frowns as he contemplates his problems.

Fact is, he's pressed for space. He points out that the library has fewer than 1000 study cubicles for Kentucky's 15,000 students. Library experts, he

points out, declare that 3500 spaces are needed. And he also explains that many volumes are stored in an annex across the campus from the main building.

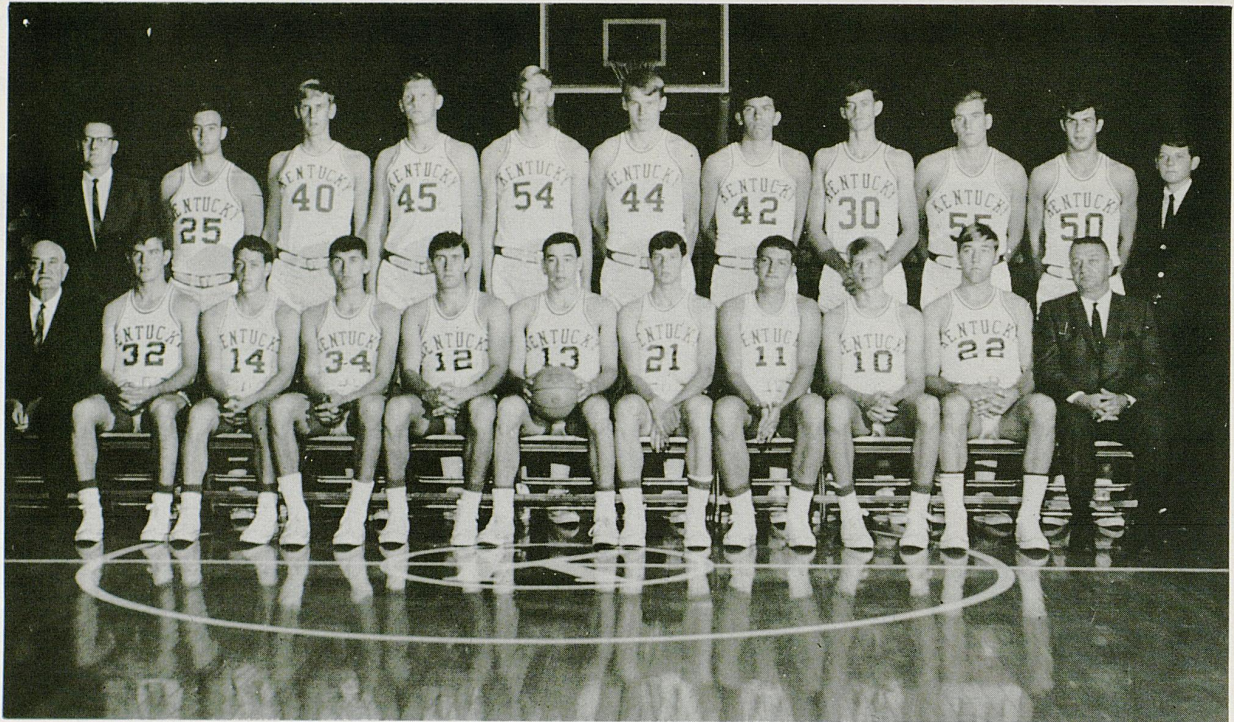
More than that, Dr. Forth sees no early relief. With new faculty being added, with the graduate program being expanded, there is dire need for even more study space and more stack room to house the ever-increasing number of books coming into the library from all parts of the world.



Dr. Stuart Forth, director of U.K. libraries, looks over one of the 1300 books arriving weekly—a total of more than 70,000 a year. He's got to find stack space to house the collection.

THE 1967-68 KENTUCKY WILDCATS

FRONT ROW (left to right)—Head Coach Adolph Hupp, Steve Clevenger, Bill Busey, Mike Casey, Jim LeMaster, Phil Argento, Terry Mills, Benny Spears, Jim Dinwiddie, Mike Pratt, and Coach Harry Lancaster. BACK ROW—Asst. Coach Joe Hall, Tommy Porter, Clint Wheeler, Cliff Berger, Art Laib, Dan Issel, Randy Pool, Wayland Long, Thad Jaracz, Gary Gamble, and Manager Allen Theobald.



UNIVERSITY OF KENTUCKY BASKETBALL SCHEDULE 1967-68

1967

Dec. 2 (Sat.) Michigan Ann Arbor
 Dec. 4 (Mon.) FLORIDA Lexington
 Dec. 6 (Wed.) XAVIER Lexington
 Dec. 9 (Sat.) PENNSYLVANIA Lexington
 Dec. 12 (Tue.) North Carolina Greensboro
 Dec. 22 (Fri.) U.K.I.T. Lexington
 Dec. 23 (Sat.) (Dayton, Cincinnati, South Carolina, Kentucky)
 Dec. 30 (Sat.) Notre Dame Louisville

1968

Jan. 6 (Sat.) Vanderbilt Nashville
 Jan. 8 (Mon.) Alabama Tuscaloosa
 Jan. 13 (Sat.) Florida (TV) Gainesville
 Jan. 15 (Mon.) GEORGIA Lexington
 Jan. 20 (Sat.) Auburn (TV) Auburn
 Jan. 22 (Mon.) Tennessee Knoxville
 Jan. 27 (Sat.) Louisiana State ... Baton Rouge
 Jan. 29 (Mon.) Mississippi Oxford
 Feb. 3 (Sat.) LOUISIANA ST. Lexington
 Feb. 5 (Mon.) MISSISSIPPI Lexington
 Feb. 10 (Sat.) Mississippi State Starkville
 Feb. 12 (Mon.) TENNESSEE Lexington
 Feb. 17 (Sat.) MISSISSIPPI ST. Lexington
 Feb. 19 (Mon.) Georgia Athens
 Feb. 24 (Sat.) ALABAMA Lexington
 Feb. 26 (Mon.) AUBURN Lexington
 Mar. 2 (Sat.) VANDERBILT (TV) .. Lexington

Tournament Tickets \$4.00 Per Night

When ordering, make checks payable to the
U.K. ATHLETICS ASSOCIATION



BARON ADOLPH RUPP
Starting 38th Season

SOUTHLAND SPORT SHOP

Distributors of

Riddell, Rawlings, Wilson, and Spalding Sporting Goods

Adidas Track Shoes Speedo Cramer Products

Plenty of Free Parking Space

Gene Stokley — In The Southland Shopping Center — Dick Wallace

P.O. BOX 8251

PHONE 277-3977

LEXINGTON TRANSIT CORP.

(Your City Bus Company)

RIDE THE BUS TO AND FROM
THE GAME

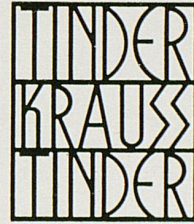
Busses will be parked at the stadium after
each game going the following routes:

**EUCLID
HOLLYWOOD
ROSEMONT
DOWNTOWN**

(Transfer downtown to
all bus lines)

IF YOU ARE GOING IN A GROUP
CHARTER A BUS

PHONE 255-7756



**145 N. UPPER ST.
1220 HARRODSBURG RD.
2121 NICHOLASVILLE RD.**

HOWARD JOHNSON'S

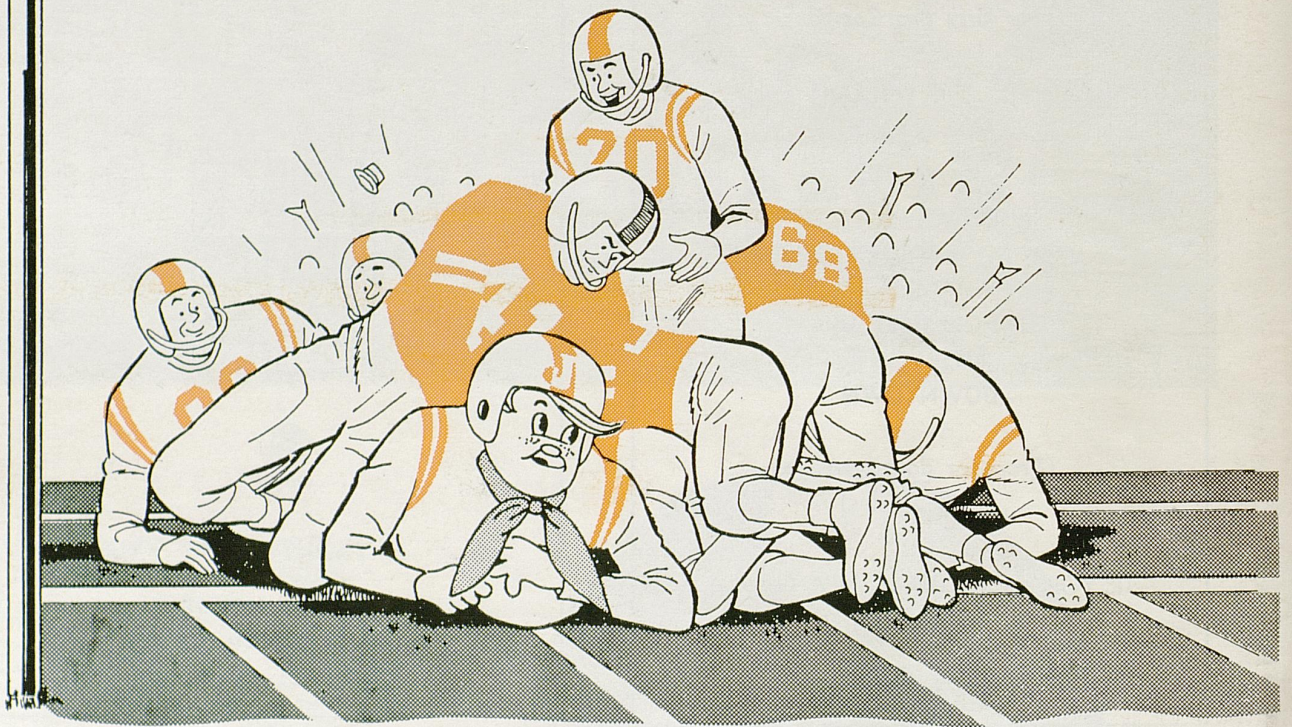
Motor Lodge



Nicholasville Road, U.S. 27, South
Phone 277-1191, Lexington, Kentucky

LANDMARK FOR SLEEPY AMERICANS

AFTER THE GAME...



make it your goal
to TOUCH DOWN
at...

Jerry's
RESTAURANTS