

# KENTUCKY Kerhel

Vol. LXVI No. 145  
Tuesday, April 15, 1975

University of Kentucky  
Lexington, Ky. 40506

## Brown decides not to play at Civic Center

By RON MITCHELL  
Managing Editor

The Kentucky Colonels, a Louisville-based American Basketball Association team, has withdrawn its request to play any future games in the Lexington Civic Center or Memorial Coliseum.

The decision was made Monday night by Ellie Brown, Colonels board chairwoman. She said her decision was made because of UK's efforts to limit the number of games played to seven and to bar professional games during the UK season.

"I DON'T WANT to get into a fight with the University — my alma mater. And as a matter of principle, I don't want to yield to their unreasonable dictates as to where, when and how many games we are allowed to play in Lexington," she said in a statement released to the press.

Brown's comments were in reference to the public release of an "interim agreement" negotiated last July by the University and the Lexington Center Corporation (LCC). In that agreement it was decided that no more than seven professional basketball games would be played in the civic center per year, and that none would be scheduled during UK's regular season. The restriction was requested by the University.

"Every program should stand on its own merits and with the fine job (UK coach) Joe Hall did this year it should be the least of his worries," Brown said. "I am



PRESIDENT OTIS A. SINGLETARY

disappointed they didn't have the courtesy to call me and discuss this. They have had this position for over one year."

THE AGREEMENT'S details were released by UK President Otis A. Singletary as a result of recent criticism leveled at the University for requesting the restriction. Last week the Urban County Council and Mayor Foster Pettit criticized the agreement.

"I would think my University has more important priorities instead of worrying about our small program there," said Brown, who along with her husband, John Y., have been avid UK supporters.

Although the agreement's provisions are not binding, they are to be used as guidelines in negotiating the final contract between the University Athletic Association and LCC. The agreement, which has been extended once, expired March 31. No formal contract has since been signed.

SINGLETARY RELEASED the agreement to show that the professional basketball provision had been part of the earlier negotiations. He thought it was being maintained throughout the negotiations for incorporation in the final contract.

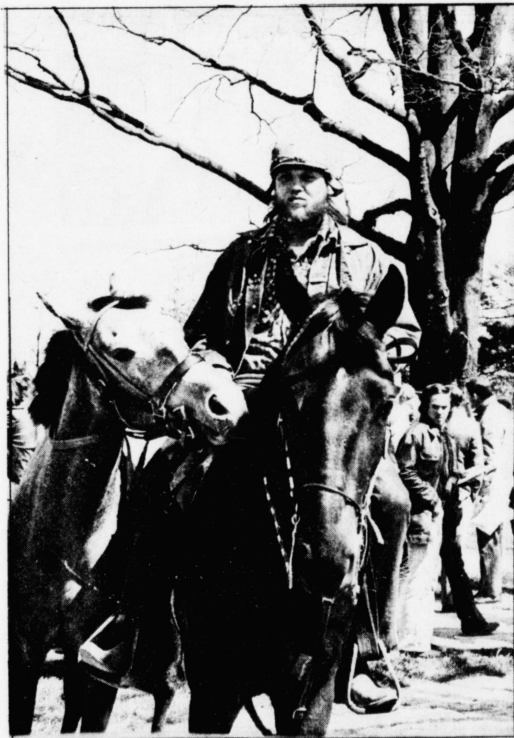
In an interview Monday, Singletary said the professional basketball provision was a basis for negotiation from the outset when the University was first approached by LCC.

The professional basketball provision states:

"UNLESS MUTUALLY agreed otherwise by written addendum hereto, not more than seven professional basketball games shall be played annually in the arena. These games are to be played either before or after (and not during) the Athletic Association's basketball season."

During the 1974-75 basketball season, the Kentucky Colonels played six games in Memorial Coliseum — three prior to the beginning of UK's season and three following the season.

Continued on page 3



Kerhel staff photo by Jim Mazzoni

## Riding high

One of the pre-race routines at Keeneland involves leading the race horses through the paddock area for spectators to scrutinize the thoroughbreds before placing their bets.

## Honor students protest possible office relocation

By WALTER HIXSON  
Kerhel Staff Writer

Supposed relocation of the University Honors Program (HP) prompted a "sit-in" yesterday at the Administration building.

Approximately 10 HP students, armed with posters, protested moving the Honors Program from its second floor Patterson Office Tower (POT) location. Although no decision has been announced, relocation is "highly likely," said John Stephenson, dean of undergraduate studies.

"I UNDERSTAND that the College of Arts and Sciences (A&S), as part of their reorganization, needs additional space — probably on the second floor," said Stephenson whose office oversees the HP.

Proposed reorganization in A&S involves merger of various colleges and departments. The changes will necessitate additional space as it will "offer a lot more services," said Art Gallaher, A&S dean.

"We know Gallaher is behind it (the proposed relocation). He and others feel the POT is for A&S only and they want us out," said one HP student speaking for the group of protestors.

GALLAHER SAID he made "a routine verbal request" to Lewis Cochran, vice president for academic affairs, for the HP space to be given to A&S. "It was a logical request so we could have our entire unit (A&S) together, Gallaher said.

"I'm sure it is traumatizing to the Honors Program but it (the request) was quite routine for us," Gallaher said. Cochran and Robert Evans, HP director,

were both unavailable for comment yesterday.

Bob Boyer, A&S fiscal affairs and operations director, said he expected the relocation request to be approved. Cochran and his assistant, Dennis Pepe, both have been "trying to find new space for the Honors Program," Boyer said.

STEPHENSON SAID he, Pepe, Evans and Cochran "have looked at some alternate locations for the Honors program. We've ruled out several (possible locations) that simply weren't adequate," he said.

A final decision as to the program's relocation will be made jointly by Evans, Stephenson and Cochran, said Stephenson. "My best guess would be that a final determination will be made sometime in June," he added.

Office space, already inadequate, is essential to the Honors Program, said the protesting students. The students, who occupied the Administration building until it closed, said they could do no more than sit until a final determination is made.

IF DENIED adequate space, they will then resort to "a strong letter campaign." A petition to stop the proposed relocation is already in circulation and has "over 300" signatures, the students said.

The HP office is often visited by new students and "Quite a number of parents who come to see what the program is like," Stephenson said.

Other HP activities and faculty offices are located on other POT floors, he said. "It would be a big advantage if we could find a new space big enough to get the entire Honors Program together," Stephenson added.

## SG elections: One out of four ain't bad

After two disappointing years of practically do-nothing Student Government presidents it would seem the time has come for students to once again have an active governing body. Unfortunately, after scrutinizing this year's presidential and vice-presidential candidates we find that the trend that has been set may prevail for yet another year.

Like last year, only two candidates are running for the two top SG offices, compared to six presidential and five vice-presidential candidates two years ago. If it appears interest in the offices is waning it's probably not an illusion.

There is hope, however, that SG will take a turn for the better and again seek some semblance of power. The only unqualified endorsement we can make is for Sherry Allen who is running for vice president.

Allen, by far, seems to be the most qualified candidate in the race and has proved her diligence and worthiness to the organization as an administrative aide for SG this year. The platform Allen is running on, along with presidential candidate, Craig Meeker, is basically an extension of SG President David Mucci's ideals. Allen has the background, vigor and know-how to complete some

of the tasks that were hoped to be accomplished this year.

Allen and Meeker are running with a 31-member senate slate. Jim Harralson and Glenn Stith, both presently senators-at-large, are the opposing candidates for president and vice president, respectively.

As a senator, Harralson attended the meetings regularly (a rare quality among this year's senators) and appears to be more aware and articulate on issues than does Meeker. We find Harralson's idea for restructuring SG appealing in some aspects, especially the proposal to remove the SG president as chairman of the senate, allowing the senate to select its own chairman. The suggestion has merit because it would curtail presidential control of the senate; however, its chances for effectiveness depend largely on the kind of active executive which the senate has relied on in the past to present legislation.

The restructuring does have drawbacks—most importantly, if the senate spends as much time researching issues as Harralson and Stith suggest, the process may be slowed down to the point that nothing will get accomplished.

A point of disagreement with Harralson and Stith is their choice of ex officio members of the SG cabinet. Harralson has said that only ex officio members of the cabinet will be from groups that are recognized student organizations by the University. Therefore they are ignoring student groups such as the Gay Coalition which is not a recognized student organization. This, in effect, gives the University administration the power to determine part of the cabinet makeup.

A major difference between the two presidential candidates is their positions on the role of the executive branch. Harralson has said he would have SG maintain neutrality on controversial issues, like the Red River dam project, unless directed otherwise by the senate. On the other hand, Meeker wants SG to take more of an advocacy role on issues.

We think SG is a more viable and effective organization if it acts as a leader by taking well-defined positions on issues. But from looking at both candidates' platforms there are glaring omissions of priorities either wishes to pursue.

Meeker's main weakness as a candidate is his apparent lack of knowledge on specific issues and

problems facing SG. In the forums held by the candidates, Allen has fielded most of the questions with Meeker taking the backseat. Meeker only joined SG recently as political affairs director, and although he says he did not do so with the presidency in mind, his move looks a bit opportunistic.

It may be because of his short experience in SG that Meeker has not presented many suggestions for changes in SG operations but to avoid another inactive SG some new ideas are in dire need.

We do not endorse either presidential candidate because Meeker appears to have few qualifications for the job and we dislike Harralson's cautious conservatism. For vice president we feel Allen is definitely the more worthy candidate.

We're not facetiously going to demand that you uphold your democratic duty and vote for the sake of voting. Nevertheless, the most effective student route to change at this University is through SG. If a duty is involved, it is to show at least a speck of interest by casting a vote for your evaluation of the most qualified candidate.

### Letters to the editor

## A viable solution: Harralson and Stith

The slate running for Student Government (SG) elective offices claims they will end the inactivity and apathy that has existed in the past year. Their assertions deserve close scrutiny.

Six of the slate members are present or former non-elected members of SG's executive branch. By constitutional design and tradition, that branch has possessed most of the authority SG has. This past year has seen an inactive SG. Will placing members of the past executive branches in elected SG positions help eliminate the inactivity they created?

The election of Jim Harralson and Glenn Stith provides a viable solution to the stagnation. As senators they have found the senate to lack autonomy, and propose removing the SG president from the chair of the senate to remedy the situation. They propose more diverse and complete mechanisms for student input to solve the idleness created when actually only a few have contributed to this input process. The restructuring of SG into an orderly framework, an initiation of distinctiveness for SG branches and maximized mechanisms for student input will compel an active, functional and productive SG. A slate directed and composed, in part, of those who instituted indolence will not make SG industrious, representative or responsible.

I believe Harralson and Stith to be the logical choice, deserving your serious consideration.

James Rees  
Pol. Sci. junior

### Inactive senate

Over the past year we have witnessed an inactive Student Senate. The two tickets running for the Student Government (SG) executive branch positions differ in their intended policies to make the senate a functioning entity.

Meeker and Allen suggest that the people in senate positions are the cause of the apathy and propose a hand-picked, representative, responsible slate as a remedy. On the other hand, Harralson and Stith propose to give the senate legislative autonomy, improved communications in reference to senate meetings, hearings, minutes, a senate orientation program, etc., and an orderly framework for decision-making.

Common sense suggests that even the most logical decision-makers need an organized structure to make operations efficient. With its own chairperson, the senate will have the independence it needs to act for the good of the student body, — an independence that will remove the throat-thrusting power the SG

president now has, and thus, an independence that will maintain the interest all senators have when they begin their terms.

Unless senators are equipped with the proper tools for operating in their elected capacities, and unless they are given the proper framework for decision-making we can never expect to see a fully productive Student Senate regardless of who holds these positions. Therefore, I urge you to vote for the candidates who will work to see these changes effected — Jim Harralson and Glenn Stith.

Bobby Collins  
Bus. Ad. junior

### Struggling SG

Student Government is alive and struggling at UK! However,

student response to this year's elections could determine whether Student Government is given a chance to grow and become more viable, or simply go the way of many bureaucracies, becoming weaker and more ineffective.

Students who have studied systems analysis are aware that organizations are often victims of their own design. This causes power to be misplaced and/or misused, as well as forcing the system to allocate its resources ineffectively. I contend that this is what has befallen our SG, and obviously the SG is only as good as the system by which it operates.

There are two candidates seeking the SG executive positions who recognize this problem and have proposed a solution to it by redesigning the working struc-

ture of SG. Jim Harralson and Glenn Stith have seen the problems of SG firsthand since they are incumbent senators. Their platform outlines the general method by which SG can be reorganized to serve students directly.

I have found them to be enthusiastic, thought provoking and well informed. They have shown a desire to encourage student involvement, proposing that SG act as an open forum to examine all sides of controversial issues, and opening up SG to all the different people and groups who compose and affect our student body. I urge all students to examine and endorse their candidacy. Further, I call upon the Kernel to do likewise, giving these two candidates its support.

Bob Vice  
Social Studies senior



## University Senate approves selective enrollment guidelines

By SUSAN JONES  
Assistant Managing Editor

Five criteria for determining selective enrollment were approved by the University Senate Monday.

These criteria will be used by individual departments and colleges in establishing selective enrollment guidelines.

**THE PROVISIONS** will provide a consistent format for University units to judge their own eligibility in developing guidelines, said William Peters, Senate Committee on Admission and Academic Standards chairman.

This committee was responsible for drafting the selective enrollment guidelines proposal.

The first stipulation of the guideline states that each academic unit should have clear objectives allowing for differences within the academic unit. Therefore, separate departments within a college could establish different enrollment guidelines.

### SECONDLY, ENROLLMENTS

## Colonels withdraw request to play games in Lexington

Continued from page 1

Singletery has maintained from the negotiation's beginning that UK's basketball program is financially secure, and there is an obligation to protect that security. It is not in the University's best interest to be put in a competitive situation with professional basketball, he added.

"WE NEGOTIATED IN good faith and are prepared to live up to it," Singletery said. "We've had that condition in there from the beginning and they understood that."

LCC is attempting to "renege" on a basic principle built into the interim agreement or "repudiate the whole thing," Singletery said.

Tom Minter, LCC executive director, said Monday he is confident "we will be able to

reach an agreement satisfactory to the University and community."

**THE ISSUE** "is a pretty big problem right now," he said, but "if we take a reasonable approach, as two business entities, it can be worked out."

Minter, who has been executive director for six weeks, said the issue centers around "whether the University can dictate how the center is to be used."

"We have something they need. We each have our needs and our needs are common. Maybe we don't understand each others needs at this time," Minter said.

"My general belief is that the students who come to my office have been sincere," McCullers

said. "I felt students were concerned about being fair to you — the faculty."

should be controlled by departments rather than colleges.

The third provision states that each academic unit should establish a study to determine career success and should modify its program accordingly.

In addition, any selective enrollment developed by an academic unit should include a rationale for enrollment limitations and a system to adjust these limitations if needed. This stipulation also states that other academic units should be made aware of the limitations.

**LASTLY, THE UNIVERSITY** should attempt to improve its student body by providing information about undergraduate admissions to all Kentucky high school students, the guidelines state.

In other business, the academic ombudsman, Dr. Levis McCullers, presented an end-of-the-year review of his actions to the Senate.

Minter said the center now under construction is larger than originally proposed in order to provide additional seating for UK basketball games. "They have developed an arena greater than Lexington needs in order to accommodate the University," he said.

wide background of entertainment.

The 11 home games UK will play in five months of the first year is not "an overabundance of basketball," he said. "I'm inclined to believe maybe the community could utilize, support and want more than 11 basketball games," Minter said.

"I PERSONALLY don't think there is any substantial conflict between professional and college basketball," he added.

# \$1.09

## Lunch at PONDEROSA

Summer  
And  
Fall

ad sales

An Excellent Opportunity To Gain Sales Experience And A Substantial Income. Must Have Car, Sales Experience Of Some Type Desirable. Will Train. See John Ellis, Advertising Manager, The Kentucky Kernel, Room 210, Journalism Building.

WE'RE BRINGING  
THE BLUES BACK  
TO THE BLUEGRASS

## THE SonSeals BLUES BAND

Saturday, April 19, 8 p.m.  
Student Center Ballroom  
\$2.00

Ticket sales begin April  
14, Room 203, S.C.

PRESENTED BY  
SCB MINI-CONCERT COMMITTEE  
"MUSIC ANY WAY YOU WANT IT"



**UK Tennis Schedule 75**

- April 16 Cincinnati (h)
- April 18 Auburn (H)
- April 19 Florida (H)
- April 20 Tennessee (H)
- April 22 Cincinnati (A)
- April 23 Middle Tenn. (H)
- April 30 Eastern Ky. (A)
- May 4 Austin Peay (H)
- May 8-10 SEC Championships Tuscaloosa Ala
- June 16-21 NCAA Tournament (Corpus Christi, Tx.)

20% off

# Sale

157 South Limestone St.  
Hours 12-5 PM

CONTINUES This Week at

# the Store



**STUDENT GOVERNMENT  
NEEDS POLL WORKERS**

for the elections April 16 & 17  
apply in Rm. 120 S.C.  
this is a paid position

**SUMMER  
EMPLOYMENT**

Thomas Nelson, Inc. Has 18 Job Openings For Students Willing To Work In The Western States. Those Selected Will Have To Show A High Level Of Initiative, Independence, And Responsibility. For Details, Come To The Placement Office In The Old Ag. Building, Room 103, On Tues. April 15th, At 11:00, 1:00, Or 3:00.  
(Allow One Hour For Interview)

**WE'D LIKE TO GIVE  
YOU A SNEAK LOOK  
AT OUR MOST  
IMPORTANT TOOL**



OUR HAND

The Leather Shop Will  
Supply You With Handcrafted Items Such As:  
TANKARDS, HANDBAGS, WALLETS, BELTS,  
VISORS, JEWELRY, SANDALS.

**The Leather Shop**

343 S. Limestone

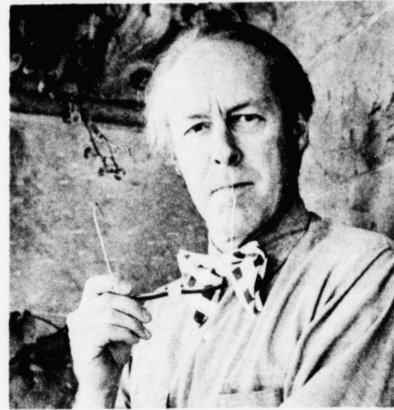
Mon.-Fri. 10-5:30  
Saturday 10-3:00

**Printmaker  
to lecture**

David Driesbach, a nationally known printmaker, will lecture on that subject today in the Barnhart Gallery in the Reynolds Building. The lecture will begin at 1 p.m.

Driesbach is a professor of art at Northern Illinois University at DeKalb. His work has been included in exhibitions in the Museum of Modern Art, the Art Institute of Chicago, and the Museum of Fine Arts in Boston.

The artist is conducting a three-day printmaking workshop on color viscosity printing as a guest of the art department.



David Driesbach

**Defiant Russian artists suppressed**

By LYNNE OLSON  
Associated Press Write  
MOSCOW (AP)—The sign on the apartment door says "famous artists," but it's only an ironic joke made by the two young painters inside.

With their satiric lampooning of Soviet society, Alexander Melamid and Vitaly Komar have chosen to defy the official artistic doctrine of Socialist Realism. For that sin, the Russian art world condemned them to paint in obscurity and isolation.

BUT THAT obscurity has lifted in recent months. The pair has joined other outcast unorthodox artists in demanding the right to paint and exhibit freely, thus jolting the official art community.

This challenge by the small, unorganized group received worldwide attention last September when an outdoor showing organized by 24 of the artists, including Melamid and Komar, was roughly broken up by Moscow police.

The resulting international protest prompted authorities to open negotiations with the artists over possible exhibitions of their work, which have opposition to Socialist Realism as their only common denominator.

A HUGE outdoor showing in a Moscow park and small indoor exhibits in Moscow and Leningrad were subsequently authorized. The artists are now pressing officials to allow an indoor show in Moscow in which

all unofficial painters would be allowed to exhibit.

Melamid, 20; Komar, 31, and the younger generations of unofficial artists have sniffed their first heady whiff of change. They're fiercely determined to do everything possible to make it last.

"This is a very critical moment in the history of Soviet art. We are finally being given the chance to develop," declared Melamid, whose witty pop art works have won praise from Western critics. Komar is his collaborator.

LIKE OTHER unofficial artists, the two have been deprived of official sales channels, participation in officially sponsored exhibitions, spacious studios and

Continued on page 5

**memos**

LAMP & CROSS will meet Tues., April 15 at 6:30 in Rm. 117, SC. All members please attend. 15A15

FREE U Coordinating body meeting — important, dance, movie series plans. Wed., April 16, 8:30 p.m., SC 119. 15A16

ATTENTION ALL OH-NI Special Education majors! Preregistration will be held: 7 p.m., April 14, 16, 17, Rm. 231, TEB. Please attend.

COLLOQUIUM: "RURAL KENYAN Women, Western Economics: the Strain of Change". Dr. Susan Abbott, 7:30 p.m., Wednesday, April 16, 245 Student Center, sponsored by the Women's Studies Committee. 14A16

HISTORY STUDENTS: Course descriptions and abstracts on next fall's history classes are available in POT 1725 from 10 a.m. - 4 p.m. on April 14-25. Courtesy of HUAC. 14A16

TRANSCENDENTAL Meditation as taught by Maharishi Mahesh Yogi — for a better life. Introductory lecture Thursday, April 17, 7:30 p.m., CB 118. 15A17

UNIVERSITY CHORUS concert, conducted by Sara Holroyd. Student Center Ballroom, April 15, 8:15 p.m. 11A15

UNIVERSITY CONCERT Band, directed by Steve Baxter, April 16, 8:15 p.m., Memorial Hall. 11A16

UK AMATEUR RADIO Club meeting, April 17, 7 p.m., Anderson Hall, rm. 433F. All members please attend. 11A16

PRE-MEDS & Pre-dents AED will provide scheduling advice in Rm. 206GT from 12-4 p.m. weekdays during both weeks of preregistration. 11A15

AED MEMBERS who want to sign up for the April 19 banquet must do so by Tuesday, April 15. Last Chance. 11A15

SEE "ATTICA". The View from the Inside, a Tricontinental Film Center release. Tuesday, April 15, 7 p.m., Rm. 215, Law Building. 14A15

INTER-VARSITY CHRISTIAN Fellowship will meet Tuesday April 15 at 7:00 p.m., S.C. 109. Everyone is welcome to attend.

IEEE MEETING on Wed. nite at 7:30, AH 260. Six seniors will lead a discussion on interviewing. 14A16

HUMAN DEVELOPMENT Club pot luck supper and elections — Wed. night. For information, call Jan, 257-1136. 14A16

CHEMISTRY SEMINAR — Dr. Gregory Chappin, Florida State University, on "Spectroscopic Studies on Water Structure" on Tuesday, April 15, at 4 p.m. in CP 137. 11A15

UK THEATRE presents an "At Random" production, Shakespeare's "Pyramus and Thisbe." UK Lab Theatre, Fine Arts Bldg., April 15, 4 and 10 p.m. Admission is free. 11A15

BOARD OF STUDENT Publications — Student applications for membership on 1975-76 Board now being received. Forms may be obtained at 529 Patterson Office Tower, or call 257-1911 between 8 and 5. Deadline for applying: 5 p.m., April 21. 11A16

ANNUAL AOA LECTURE, April 15, 4 p.m. in the 6th fl. Hospital Auditorium. Dr. David B. Clark, Chairman, Dept. of Neurology on "Basis for Medical Specialization." 11A15

**Dodd Schwinn Cyclery**

**10% OFF**

**ON ALL BIKE REPAIRS**

(with this coupon)  
Pick up & Delivery  
Available

1985 Harrodsburg Road  
(Near Lane Allen Road)  
Or Call 277-6013

10 Per Cent Off On All  
Purchases With UK I.D.  
Good Thru May 2nd  
Mondays thru Thursdays  
**THE MISSING LINK**  
136 SOUTHLAND DR.



## 'Choristers' salute American music

By ED DIETZ  
Kernel Staff Writer

Sara Holroyd has had her name misspelled so many times she's gotten used to it. In an article last week she was called "Susan Holyroyd." Earlier this semester it was "Sarah Holyrod."

Regardless of how many ways her name appears in print, Sara Holroyd is still director of choruses at the UK school of music. She explained that "it doesn't really matter how my name is spelled as long as people know about our upcoming concert."

THAT CONCERT will be presented tonight at 8:15 in the Student Center Grand Ballroom and features choral interpretations of American popular music by the UK Chorus, Choristers and Chorale. There is no admission charge.

Holroyd said "these three groups in the past have performed a lot of serious music, but this concert is all popular music. We think it's time to let our hair down."

There's a lot of music on the one-hour program, including gospel, spirituals, a song by Stephen Collins Foster and a male quartet singing "Standing on the Corner (watching all the girls go by.)" Two early 20th century vaudeville-type numbers are included along with some music by George M. Cohan, tunes from Broadway musicals "My Fair Lady" and "Carousel", and some movie music from "The Wizard of Oz" and "The Sting." A selection from Gershwin's "Porgy and Bess" is also planned.

HOLROYD WAS asked if the program might be too ambitious. "Not really," she replied. "We have the talent and the right number of people to keep it from being a burden on anyone."

She said there are 120 voices in the Chorus, 60 in the Choristers and 23 in the Chorale. In addition, she pointed out, "every college of UK is represented except for the law and medical schools. Also," she added, "there's a good balance between music and non-

music majors." Holroyd believes the program is important "not only because the music is light, but also in view of the bicentennial. That's one reason we chose to do a concert of strictly American music."

THERE'S NO bicentennial fanfare or hoopla associated with the concert, though. Holroyd said it's the kind of thing the bicentennial should represent — "people contributing their talents and abilities in the best way they can. And what better way is there than singing?" she asked.

Tonight's concert is one of five programs scheduled this week by the school of music. Tomorrow, the University Concert Band will perform. The University Orchestra has a concert Thursday; and Saturday, it's the Symphonic Band.

Those three performances all start at 8:15 p.m. in Memorial Hall; but the Collegium Musicum will present a concert of recent music Sunday at 8:15 p.m. in Christ Church, 166 Market Street.

## Defiant Russian artists suppressed

Continued from page 4

other prerequisites which make life comfortable, that are all allotted to orthodox artists by the Union of Artists.

Graduates of a Moscow art institute, both were expelled from the youth division of the Artists Union seven months ago because of their subject matter.

The slight, bushy-haired Melamid stopped getting assignments for book designs from publishing companies, which was how he earned his living. He was assigned his first book design since then last month.

KOMAR WAS allowed to continue his job teaching art to school children, but he was continually warned about his unofficial activities.

The two work in Melamid's small, paint-stained studio—the converted living room of a three-room apartment which he shares with his wife, Catherine, (also an artist) and their two children.

When his work was cut off, Melamid and his family survived

on the proceeds of a few sales of paintings by Catherine and the small earnings she received as a part-time teacher.

MUCH OF what is done now by unofficial artists is bad, Melamid said. "The purpose of exhibitions of nonconformist art is not to show how good it is, but as a first step toward a positive development to make it better."

He also feels that more exhibits would help unite the group of unofficial artists, who are concentrated in Moscow and Leningrad. Their styles vary widely, from surrealism to abstraction to colorism. But they all stray from Socialist Realism which insists on life-like, positive portrayals of Soviet society.

As matters stand now, "we have no communication," Melamid said.

"THERE ARE no schools of unofficial art. It's every man for himself.

"It's imperative for young people to be able to see what others are doing, to discuss their art," he added. "Some gifted

people just drop it because they're working in an airless cage."

The young are also disturbed that in negotiations over exhibitions, Soviet authorities deal only with the older artists.

Only 20 artists, mostly from the older generation, were allowed to exhibit in a small indoor showing in Moscow in February.

Melamid and several other artists in their twenties criticized the exclusion of many painters from the show, claiming that a handful were being used as a tool by authorities to suppress artistic freedom in general.

### Shakespeare's 'Pyramus' to be performed

The UK Theatre will present Shakespeare's "Pyramus and Thisbe" today in the Lab Theatre in the Fine Arts Building. There will be two performances, one at 4 p.m. and 10 p.m. Admission is free.

The play is under the direction of theatre arts major Tony McNolly.

GENERAL CINEMA CORPORATION  
TURFLAND MALL  
**Cinema**  
Academy Award Winner — Best Supporting Actress  
Held Over! 4th Week!  
**AGATHA CHRISTIE'S "MURDER ON THE ORIENT EXPRESS"**  
Times: 2:00-4:45-7:25-9:45

FAYETTE MALL  
272-6007  
**Cinema I**  
Academy Award Winner (Best Picture)  
Winner (Best Picture) — Academy Awards Incl.  
Highest Rating  
**The Godfather PART II**  
Sun. — Thur. At: 1:00-4:30-8:00

FAYETTE MALL  
272-6007  
**Cinema II**  
Held Over!  
warren beatty  
julie christie · goldie hawn  
ALL CINEMAS—BARGAIN MATS. EVERY DAY 'TIL 2:30 P.M.—\$1.25

## SKY DIVING

The Fastest Growing Sport of the Nation



GREENE COUNTY SPORT PARACHUTE CENTER OF KENTUCKY

Jump at the most experienced parachute training facility in the country. Over 11 years experience and better than 15,000 students trained with Greene County Sport Parachute Centers.

Open Every Day 9 a.m. until Dark  
First Jump Course \$37.50 your own Group of 5 or more only \$27.50 per person, price includes: Logbook, all training, all equipment and first jump. Notice: After April 1st our jump rates will increase to \$40.00 and \$30.00 respectively, so inquire soon!

GREENE COUNTY SPORT PARACHUTE CENTER

3 miles west of Bardstown off of Rt. 62 on Airport Road  
502-348-9981 Call Evenings 502-348-6577  
In Lexington, Contact Grant Stapleton, 266-8463.

Summer in europe  
65 DAY ADVANCE PAYMENT REQUIRED  
U.S. GOVT. APPROVED  
WA PAN AM TRANSVIA  
CALL TOLL FREE 1-800-324-4867

CHARTERS LESS THAN 1/2 REG. ECONOMY FARE  
uni-travel charters

Passport Photos  
Application Photos  
3 for 4<sup>50</sup>  
6 for 5<sup>50</sup>  
12 for 7<sup>50</sup>

SPENGLER STUDIO  
Ph. 252-6672 222 S. Lime

# THE CONCERT COMMITTEE PRESENTS THE EAGLES AND EMMY LOU HARRIS

Memorial Coliseum Friday, April 25 8 p.m. Ticket sales: Wed., April 9- Memorial Coliseum; April 10-25 203 Student Center Barney Millers, Dawahares (Gardenside), JP Snodgrass, Tom Alexander Stores: \$5, \$4, \$3.50, \$3

**MODERN SOUND EQUIPMENT CO**  
Expert Stereo Repair  
(Behind Pic-Pac)  
235 Bolivar St. 254-5719

**WICHY FOR SENATOR**  
PROMISES MADE BY ANYONE ARE JUST THAT... PROMISES!  
WANT ACTION?... VOTE!  
WANT REPRESENTATION? CALL 257-1145

**STUDENT GOVERNMENT ELECTION FORUM**  
April 15  
8:00 pm  
in Blanding Tower  
22 nd floor

**Authentic Handcrafted Indian Jewelry**  
**10% Off**  
April 14-19  
To First 50 Customers With Coupon  
Rings \$5 up  
Shadowbox bracelet and Ring Set \$50  
Squash Blossoms \$75 up  
All Items Unconditionally Guaranteed  
BankAmericard Mastercharge  
**Handbag House**  
Imperial Plaza 323 Waller Ave

— New Course —  
**Science And Civilization HIS 211**  
Available For General Studies, Area 6 Requirement  
Tuesday & Thursday 9:30-10:45  
For Further Information Contact Dr. Eastwood  
Patterson Office Tower 1757

The Sociology Department Invites  
**ALL JUNIOR AND SENIOR SOCIOLOGY MAJORS**  
To a Dinner-Conference FROM EDUCATION TO EMPLOYMENT  
Wednesday, April 16th from 4:00 p.m. to 9:45 p.m.  
STUDENT CENTER  
(Room 214 - President's Room)  
No Charge, But Advance Reservations Required  
Reservations must be made before noon on April 16  
To Reserve Your Complimentary Dinner See Mary Carpenter, Room 1525 P.O.T. (258-4798)

Clip 'N' Save  
THE ICE CREAM PLACE  
**Scoop's**  
Clip 'N' Save  
**'The Better Ice Cream Parlor'**  
Come In — Sit Down And Enjoy One Or More Of Our 43 Flavors Of Delicious FRENCH BAUER ICE CREAM.  
**Special This Week**  
**Super Sundae Sale 1/2 Price**  
A \$.70 Value For Only \$.35.\* Whipped Cream And Nuts Included. Just Clip This Ad And Bring To SCOOP'S Cross Roads Plaza — Across From Fayette Mall. Limit — 2 Sundaes Per Coupon — Expires April 20th.  
\*Hot Fudge \$.5 Extra.  
Clip 'N' Save

# Over .500

## Baseball team sweeps series from Florida

By JIM MAZZONI  
Kernel Sports Editor  
The Wildcat baseball team vaulted above .500 for the first time this season when it swept a three game series this weekend from SEC divisional rival Florida in Gainesville.  
Seniors Ed McCaw and Mike Howard teamed up in Saturday's doubleheader as both hurlers went the distance in respective 4-2 and 6-2 victories to give the Cats a 12-12 mark on the season and a 4-4 conference record.  
MCCAW (NOW 5-1) GAVE UP five hits and Howard (now 2-2) only four, while the Cats collected six hits in the opener and eight hits in the second game.  
In Sunday's game junior Tim

Gravens (now 3-3) scattered nine hits in a thrilling 6-5 victory that was decided in the bottom of the ninth when left fielder Jimmy Sherrill cut down Florida's tying run at the plate to end the game.  
The late threat started with the Cats controlling a 6-4 lead and Gravens getting out the first two Gator batters.  
THEN HE gave up a walk, single, and another walk to the next three batters before the second Florida single of the inning drove in a run and sent the tying run charging to the plate.  
That's when Sherrill made his heroic throw to catcher Marv Foley that put an end to the Gator rally.  
Sherrill also made a big offensive contribution in boosting the

Cats record to 13-12 (5-4 in SEC play), as he went seven for 12 at the plate in the three game series.  
FRESHMAN SECOND baseman Mike Moore drove in what proved to be the winning run in Sunday's game with a triple in the seventh inning that drove in LeRoy Robbins and put the Cats up 6-2. The Gators then scored two in the eighth before falling short in the ninth.  
Kentucky will meet Louisville today in Louisville at 3 p.m., and will then host the Cardinals on Wednesday at 3 p.m. at the Shively Sports Center. If today's game should be rained out the two teams will play a doubleheader here on Wednesday.

# Wildcat ruggers beat Indiana despite sluggish performance

By PAUL MEEK  
Kernel Staff Writer  
In a sluggish but solid performance, the UK Ruggers buried the visiting Indiana Hoosiers 19-7 Saturday at the Shively Sports Center.  
The Cats opened the contest with a bang as they forced the Hoosiers deep into their own territory.

five yard line. This time the conversion attempt was successful and the Cats padded their lead to 16-3.  
But, like the first half, UK relaxed after scoring and once again play became stalemated. The Cats scoring then came to an end when Karlos Bruce made one of two penalty kicks and boosted their lead to 19-3.  
Playing an excellent defensive game, Kentucky kept Indiana buried deep in its own territory throughout the second half.

first try to close the gap to 19-7. Heads-up play by Hoppy Haight thwarted Indiana's conversion kick as he alertly slapped the ball away from the IU kicker.  
Playing inconsistent at times, the UK ruggers still held the Hoosiers in check, even though they played without the services of six starters, including wing man Kevin Sullivan, who set out of the contest with a pulled muscle in his lower back.  
The contest nevertheless served as a warm-up for the SEC Tournament which begins this weekend in Knoxville. Kentucky is now 5-1-1.

WITH THE CATS applying constant pressure, Indiana fumbled near its own goal line and UK's Charley Wall picked it up and scampered into the end zone for the first score of the game. The conversion attempt by Mike Philis was good and Kentucky took a 6-0 lead.  
As action continued in the first half both teams became mistake-prone, but though the Cats seemed to dominate play, the Hoosiers scored next on a free kick to make the score 6-3 when Kentucky was called for an infraction.  
The Cats, who had been rugged from the start, then countered when Fred Wachs took the ball out of a ruck near the goal line to score in heavy traffic. The conversion attempt was unsuccessful and the first half ended with Kentucky leading 10-3.  
THE SECOND half began much like the first one. The Cats scored quickly as Joe Altobellis carried the ball over from the

## Nolan predicts fast ball will be faster than ever

SAN DIEGO (AP) — Gary Nolan shrugged off defeat in his first outing in a year and a half with the prediction that his fast ball will be faster than ever before long.  
"He told me 'I know now there's much more there than I've given,'" said Cincinnati Reds Manager Sparky Anderson.  
"He said, 'In three or four more starts I'll have a better fast ball than 1971,'" Anderson added.  
NOLAN LOST to the San Diego Padres 3-2 Saturday night in his first major league start since the fall of 1973.

He lasted six innings, yielding nine hits and three earned runs.  
"You hate to lose," said the 26-year-old righthander who remains convinced his arm was repaired with the removal of a bone spur a year ago.  
He refused to blame the shaky return on jitters or inactivity.  
"I wasn't so much nervous as I was getting the feel of things out there. Overall, I was impressed with the way I felt.  
Nolan's next start will be an even bigger assignment when he faces the Los Angeles Dodgers Thursday night.

**CHEVY CHASE COIN LAUNDRY**  
**312 SOUTH ASHLAND**  
Lexington's Most Popular Self-Service Laundry  
For UK Students and Faculty  
Self-Service Laundry      Dropoff Dry Cleaning      Dropoff Laundry  
courteous attendants      modern equipment  
hours 8:00 am - 10:00 pm      phone 266-5721

JEFF - CAROL M.P. V. Herb - GOOD see a Tes M.P. T ROACH Boss JOSIE William JIM, 55 friend, HELLO ONIS M. LOYAL invade C BUMB the paper WHEN Mark-P LUCH Adellants SCHUE or a retr COLUJ come! B DEAR I'm not JOHN luck in BARB in Jim M.D.G. PATT ness ton JO HZ AGO DH DOES have gr D.J. TIGE IV? Bur LICH Calvert ALVIN sey 7 SYLV HI PU CHIC WART reward KENN LOVE "mount LIEB SPARE land RA ALAN Kathy JED Higbyrr I PH inform JIM I AM RUD Girl YO E Hepler MAR Your D DON "Keen BAR LKD to WHA cars ei SIGN friends JOAT burns. BAR DOR Come BEN Toosis KAT Larry. MIK bench CHU — Lar PEG "Pop CHA Easter NAN dents FAN — M.L. SPIS TIG HEV LOV happ DAV under MAR chick. D.B Cucur GRE IGIC L. H the T. JOH dying .PER Happ PEK happy PE ger & KIS Gerry HU Jacki SPR height



# classifieds

## PERSONALS

**JEFF** — CAN WE please join I Felta Thi? CAROL AND CHERI — sorry, Patsy.  
**M.P. WE LOVE YOU!** The Tealists and Herb — (Hurry up Herb!)  
**GOOD TIDINGS** — one thin dime each — see a Tealst!  
**M.P. TRY ANOTHER case.**  
**ROACH, I WANT 3** carrots next time.  
**JOSIE, I WELCOME BACK** to Lexington — William.  
**JIM, SOCKO, KICK,** punch, destroy, your friend, Tom.  
**HELLO, DONOVAN,** Let's take a shower.  
**LOYALIST MEMBERS** OF the Gestapo to invade Oklahoma, Steve.  
**BUMBLERS — THEY FINALLY** got it in the paper!!  
**WHEN DOES BUMBLERS** Malone want Mark-I-poo? G.  
**LUCCHITO: VIVA LA** raza y la revolucion. Adelante!  
**SCHUBERT: IS THAT** your original face or a refeed?  
**COLUMBIA UNIVERSITY: HERE I** come! B.J. Dollase.  
**DEAR T.H. —** Tough luck buster. I'm glad I'm not in your shoes. Crabbie.  
**JOHN CRABTREE — GREAT** pitching — luck in Florida — Devoted Fan.  
**BARBARA NEWCOMB,** save me a place — in line? Admire?  
**M.D.G.: O.D. What a** title! Love, R.N.  
**PATTY, THE KITCHEN'S** open for business tonight. Chuck.  
**NO HARM MEANT** ... Love ya still ... AGD pledges.  
**DOES THE VALKYRIE** Duck Woman have green striped toes?  
**O.J. — I LOVE YOU!** — Your little beast. TIGER, AFTER ORALS, how about an I.V.?  
**L.I.C.H. IS CARSON** City anywhere near Calvin City? Cav.  
**ALYNI: WHERE'S HOBOKEN,** New Jersey? — Your Constitutional Chipmunks.  
**SYLVESTER I LOVE YOU,** Tweetie.  
**HI PUPPY, I like you,** Bunny.  
**CHICKS OF UK: loosen up!** Spring is here.  
**WART — PLEASE FIX** my squeaky bed — reward! —40¢.  
**KENNY, I'VE GOT** the key, Steve.  
**LOVER — JUST GIVE** me kisses, "mountains" and time ...  
**L.I.E.B. WHAT IS** the meankin? Shadow.  
**SPARKS, WE LOVE** your money. Keeneland Race Track.  
**ALAN, MARTI, KEN,** Lou, Carolyn, Kathy, David equals number 1!  
**JED SMICK, HOLY** Hubert — save the Higbyville sinners!  
**I PHELTA TH!** meeting, Thursday 9:00. Information, 258-3285.  
**JIM — YOU DO** alright for a rabbit! Sally.  
**I AM SO TOO** clever, Rudolph?  
**RUDOLPH? GIVE** ME a line, love Clever Girl.  
**YO BAD LAURA,** your last name isn't Hepler.  
**MARK N., YOU'RE** right. I'm sorry. — Your Damn Yankee.  
**DONALD RAY SMITH** xx00 for the "Keen" weekend! I love you bunches! Phyl.  
**BARSTORM OF SIGMA** NU likes the LKD trophy.  
**WHAT? NO CAR** dealers in Wabasha? No cars either?  
**SIGMA NU'S CAN'T** wait to see all our friends!  
**JOAN OF ARC** sez — 365 got 3rd degree burns.  
**BARBERA — CAN YOU** handle it? David.  
**DOROTHY — YOU'RE** LOOKIN' good ... Come on down! Joe.  
**BEN — ONLY 70** more days 'til W Day — Tootsie.  
**KATHY, TOLD YOU** we'd win. Trust me, Larry.  
**MIKE — MEET YOU** at the weight lifting bench. (Tonight!) 1-231.  
**CHUCKIE, BROOM-BOOM** — eat my shorts — Lana Banana.  
**PEGGY LINDSEY: I** love you honey — "Poopy".  
**CHARLIE — I CRAVE** your body — The Easter Bunny.  
**NANCY MARKSBURY:** male law students can't wait.  
**FANS, THE BIG** white machine is coming — M.L.  
**SMISH, PLEASE MARRY** ME.  
**TIGGER, PIGLET,** shall we begin? Poo.  
**HEY BOSS, I sure** do love you, Beth.  
**LOVER BUDDY —** you still make it happen. Love Steve.  
**DAVE HAGERMAN** says hello to the underworld.  
**MARGO: CHICK, CHICK,** chick, chick, chick, chick ... Brian, Bruce.  
**D.B. — NOW** about a little "fella-ship"! Cucumber Kid.  
**GREAT SPECKLED** Hooty recruiting I.G.C. councilpeople. Interested? Apply.  
**L. Howard — Looks** aren't everything — The Technicians.  
**JOHNNY, COME HOME,** your mother's dying — God.  
**PERRY — YOU'RE** OLDER but cuter, Happy Birthday.  
**PERRY — YOU'RE** OLDER but cuter, happy birthday.  
**PERRY — HAPPY** birthday. Love, Ginger & Callie.  
**KISSINGER:** can detente prevent a German-American break?  
**HUGH — 10.4 ON** Liberty and Freddie.  
**Jackie.**  
**SPRINGATE,** take us to such great heights, Blanding Tower.

**BILL S. —** Crave your body. Your secret admirer.  
**LOREN M. —** well buddy, what's your answer?  
**PAUL — HOPE** your moustache won't tickle too much.  
**B.S.'S SCOTT:** Awaiting your call. Secret Admirer.  
**K.A.C. — I LOVE** you — from a Blue Duck!  
**TO MY FRIENDS** and Kirwan 3, thanks! Appendixectomy.  
**SCOTT, YOU'RE** legal now. Happy 21st. Rita.  
**C.L.A. — I'VE** got the clap — love, Sonny.  
**BILL, GLAD WE** met 22 months ago. Love.  
**BASS LAKE,** do you remember Mouldy? Mouldy Marvin.  
**MOULDY, REMEMBER** Bass Lake? Sonny Barger.  
**ANN: LET'S** hunt pumpkins. W.A.S.  
**DEAREST IVAN —** the pie man cometh opening night.  
**COMMONS STUDY** Room — live entertainment featuring Gary Davis.  
**GARY FEATURES** his dancing computer in fortran.  
**MICKEY, NEVER** before a meet!! Why not calculus instead?

## FOR SALE

**WESTINGHOUSE 5000 B.T.U.** air conditioner, two years old. Call 254-0666. 1A16  
**MALE AND FEMALE** ten speeds, excellent condition, customized, cheap. Call late 254-4766. 1A16  
**WILSON GOLF CLUBS** — full set — good condition. Call 253-1120. 1A16  
**WATERBED, LINING, PAD,** custom redwood stained frame. One year old. 254-6218 after 5 p.m. 1A16  
**1973 LB450 HONDA,** Perfect shape, low price. Must sell. Call 255-1155. 1A16  
**1974 TRIUMPH TRIDENT,** One month old, 1000 miles. Low price, 255-1155. 1A16  
**MOBILE HOME,** Two bedroom, partially furnished, close to UK. Cheap, 255-2785. 1A18  
**1966 CHEVY II** Nova. Good condition. Asking \$500. 269-6167 after 10 p.m. 1A18  
**1970 VOLKSWAGEN VAN,** good condition. Call 278-4846 after 6 p.m. weekdays, anytime weekends. 1A18  
**B FLAT CLARINET** — Selmer. Signal. Like new. Price negotiable. Need cash. 278-5347. 1A18  
**ANTIQUE BRASS** Bed double, circa 1860. Call 259-0206. 11A17  
**FEMALE TORTOISE SHELL** cat. 1 yr. Best offer. 252-3832. 11A15  
**RAILIEGH BICYCLE,** excellent. Grey. Must sell. 990. 211/2". mens. After 5:30. 259-0946. 11A15  
**AARON'S, 614 W. MAIN,** now has shipments arriving weekly from India and Pakistan. (The men's shirts are great). Also look in this month's Vogue (page 109) for some of our clothes. Hours: 11:30-6:00, except Thursday and Sunday. 11A15

**1972 VEGA HATCHBACK,** standard transmission, AM-FM radio, \$1400. Call 252-5270 after 5. 11A17  
**1971 IMPALA CUSTOMCPE,** A.C. P.S.&B, new books, \$2,000 or best offer. 269-3972. 10A16  
**TOYOTA, 1972 HiLux** pickup, custom wheels, economical. 293-1754 after 6. 10A16  
**FURNITURE, ONE YEAR** old, bedroom, living room, dinette/set, others. Call 277-7031 after 5 p.m. 10A16  
**HANDWOVEN BAMBOO** backpacks, purses, waste baskets, planters of Philippine tribal design. 269-4559. 10A16  
**RUG — 12 x 12** Spanish Red Ebony Sears Cathedral, 100 per cent Herculon. Orig. \$9.99 yard. Now half price. 278-2119 before 10 p.m. 10A16  
**HAND EMBROIDERED** fabric for imaginative sewer who likes the unusual. 269-4559 evenings. 10A16  
**WOODED TRACTS** with spectacular views. Nine miles west of Bearres. One hour from Lexington. Five acres, \$3,600, owner financing with \$700 down. 14 acres, \$9,900 financing available. 269-4978. 10A15  
**COMPONENT SET** AM-FM receiver, amplifier, 8-track tape player, twin speakers. \$100. 269-1542. 10A23  
**BRUCE WOOD** golf clubs, irons, woods, good condition, bag included. \$125. 233-5733. 10A16  
**1971 HONDA** C100 with new helmet. Very good condition. Must sell. \$350. 272-6462. 8A21  
**AM CAR RADIOS,** FM tape player. Call Alan, 293-3067 after 4 p.m. 9A15  
**MOTORCYCLE, 1974** Triumph 500cc Trophy, 700 miles, near perfect. Best offer. 255-7469. 9A15  
**1970 MERCURY COUGAR** convertible 28000 miles. PB-PS automatic, excellent condition. 269-4575. 9A15  
**MOTHER'S DAY** gifts: beautiful hand-made quilts. From \$200. 7:2377; evenings 7:1295. 9A24

**MARANTZ 240 POWER** Amp with walnut cabinet. Immaculate condition. Call 253-2169. 7A18  
**U.S. DIVERS,** 1974, 712 cu. ft., tank and 1/4c pac, used twice. Call 257-1095. 8A21  
**DATSUN 240 Z,** 1973, 9500 miles, silver, very exterior, black interior. Call 257-1095. 8A21  
**17 FT. SAILBOAT** and trailer, \$700. 4 piece bedroom suite (queen-size), \$400. Call 252-5318. 15A17  
**POOL TABLE,** good condition, balls, sticks included, sold to highest bidder. 258-3300. 15A17  
**AKC CHAMPION SIRE** female gold sable Lhasa Apso puppy. Affectionate pet with show potential. 293-2215. 15A17  
**NIKON F BODY,** accessories, excellent condition. 257-1800, 266-4701, ask for Chuck. 15A17  
**10-SPEED MIRELLA** serial No. 8, 21 lb., handmade touring bicycle. All Campagnolo equipped, sew-up tires. New, 500 miles later yours for a song. Call Kevin, 258-4114, try again. 15A17  
**FOOD FOR SALE,** Jewish Suedah, April 20 from 12:30 p.m. till 4 p.m. Eat in or take out. 120 West Maxwell. Open to all. 15A18  
**1971 OLDS CUTLASS,** bucket seats, rally wheels, power steering & brakes. Excellent condition. Phone 266-2887. 15A18  
**1963 PORSCHE COUPE,** white red, \$2900. Also classic 1957 Porsche Speedster. 252-6887 (evenings). 15A21  
**1968 PONTIAC LEMANS,** excellent condition, air conditioning, power steering. \$900. 272-7369. 15A21  
**COMPONENT SET** — 8-track and cassette recorders, turntable, AM-FM receiver and speakers. 252-2837. 15A21  
**MATTRESS, BOX SPRINGS** and frame (twinsize); very reasonable. 258-8934 or 253-2669 after 9 p.m. 15A21  
**1968 CL125A HONDA** motorcycle, good tires, just tuned. \$250. 266-7767 after 5 p.m. 15A21  
**ANTIQUE REFRIGERATOR** — one of first by General Electric. Best offer! 252-2837. 15A21  
**PLANTS FOR SALE,** Pooth's Corner at Jefferson Viaduct — High, 10 per cent student discount. 15A25

## LOST

**LARGE SILVER-PLATED** tray in Student Center. Great sentimental value. Sizeable reward for its return. No questions asked. Write: Manns, 879 Robin, Lexington, 11A15  
**MAN'S SILVER** wedding ring. Reward. 269-5261. 11A15  
**PRESCRIPTION SUNGLASSES** in tan case. Reward. Call 258-4276. 1A416  
**SLIDE RULE, RING, silver,** lost in CP or FA. Call 257-3445. 15A11  
**LADIES GOLD GRUEN** wristwatch. Friday afternoon, April 11. Reward. 266-7927. 15A17

## FOUND

**PUPPY** NEAR Maxwell St. Saturday night. Call 255-9851 and identify. 15A17  
**1973 CATHEDRAL** Preparatory class ring near Haggin Hall. Call 257-1174. 15A17

## FOR RENT

**S. HANOVER** — Lovely room with bath. Working girl or student. Near bus line. 266-1434. 1A418  
**FEMALE ROOMMATES,** 3 bedroom trailer, 502-877-5846 or after 5 p.m., 254-0803. 1A418  
**FOUR BEDROOM** house near UK. Available June 1-August 15. Call 277-3839. 10A16  
**FURNISHED ONE** bedroom apartment to sublet for summer. Nice. Evenings. 266-3065. 10A23  
**SUMMER LEASE** Spacious 3 bedroom apartment. Corner of Euclid and Aylesford. 252-530. 10A16  
**SUMMER LEASE,** Roommates to share large house. Corner Euclid and Aylesford. 257-9047. 11A17  
**TWO COUPLES** grad students looking for 2 bedroom apartment for summer. 253-2993. 11A17  
**APARTMENTS AND** rooms for rent, summer and fall. Close to UK, reduced summer rates. 269-1876. 1A21  
**EXTRA LARGE** bedroom and living room completely furnished, central air and heat, laundry facilities. Walking distance to UK. Utilities included. Deposit will hold apartment for fall semester. Summer apartments available, lower rates. Ph. 266-8442 after 5:30 p.m. weekdays. 1A28  
**TWO — THREE** bedroom apartment. Summer only. \$150. Close to campus. Call 252-5380. 15A17  
**UNFURNISHED EFFICIENCY** with private bath for student within walking distance of UK. Can occupy anytime after June 1. Call 277-2312. 15A17  
**SUMMER ROOMS,** \$30 plus utilities. 1 min. walk to campus. 252-7350. 15A21  
**SUBLET: FOR SUMMER,** nice efficiency apartment close to campus. Call 254-2125. 15A21  
**IF YOU LIKE** older places, this is it! 7-room duplex, Chevy Chase. Available June. 266-4676. 15A28.

## HELP WANTED

**SKATING INSTRUCTOR,** Bunny's Skate Center. Call Tina Scruggs at 254-2606 or 252-9779. 11A15  
**ADDRESS ENVELOPES** at home. \$800 per month, possible. See ad under Business opportunities. Triple 'S'. 10A23  
**ATTENDANT NEEDED** by male physically handicapped graduate student to share one bedroom apartment. Room, pay, tutoring in physics or math. 255-0097. 9A15  
**SUMMER JOBS.** Be hard worker, relocate, have summer free. 12 3 or 6 Wed. Placement Office, Old Agriculture Bldg., Rm. 103A. 15A16

## MISC.

**OUTDOOR ADVENTURES** of Kentucky (OAK) Survival. Canoeing, climbing instruction. Canoe rentals. 276-1356. 27A30.  
**WITNESSES NEEDED — MUSTANG,** parked on Woodland, hit Tuesday (?) Please call 257-2415. Reward. 11A15  
**FREE LITERATURE** and information. Know the facts. Contact Right to Life of Central Kentucky, 111 East Short St., 252-3721. 4A22

## SERVICES

**TYPING OF THESES,** dissertations, reports, manuscripts. Guaranteed error free copy. Near UK Bluegrass Secretarial Service, 431 S. Broadway, No. 311, 255-9425. 7A18  
**ABORTION, BIRTH** control information and referral. No fee. Up to 24 weeks. General anesthesia. Vasectomy, tubal ligation also available. Free pregnancy test. Call PCS, non-profit: (702) 298-7995 1A10  
**SWIMMING POOLS** cleaned by high pressure — painting available. Phone 255-9742 or 278-4352. 15A17  
**FUTURE CPA'S:** Learn how to prepare for the CPA exam. Becker CPA Review Course. Call collect: (502) 584-4023. 15A17  
**TRANSCENDENTAL** Meditation as taught by Maharishi Mahesh Yogi. Thursday, April 17, CB 118. 15A17  
**EXPERIENCED COUNTRY** rock band for hire. No agency hassle — lower rates. 276-1984. 15A21  
**FEMALE GRAD STUDENT** to share 4 bedroom house. \$60 a month. 254-7890. 11A17  
**WANT SMALL AREA** (garage OK) accessible and dry. Summer furniture storage. 253-0850. 11A15  
**STRING QUARTET** to play at semi-formal wedding. 252-5843 after 5 p.m. 11A17  
**NEEDED: FEMALE** roommate. \$60 per month, includes utilities. Furnished, 2 bedroom. For summer. 272-7461. 11A17  
**FEMALE ROOMMATE:** own room and full bath. Split expenses. Available June 1. 269-6425 nights. 1A416  
**STUDENT NEEDS PIANO.** Maybe you're leaving Lexington and must sell your piano. Call 253-3518. 15A17  
**THREE OR FOUR** bedroom house for fall semester. Near UK. Call 258-4037 after 7 p.m. 15A21  
**LARGE FURNISHED** house or apartment needed for fall semester. John, 258-2135 or 257-3526. 15A21  
**MUSICIANS, SINGERS:** interested in forming a traveling company for summer? Phone 278-7978 from 1-6 p.m. Tues.-Thursday or Friday. 15A18

## BUSINESS OPPORTUNITY

**ADDRESS ENVELOPES** at home. \$800 per month, possible. Offer details, send 50 cents (refundable) to: Triple 'S', 499 R18, Highway 138, Pinion Hills, CA 92272. 10A23

## KENTUCKY Kernel Classified Ad Form

The new rates for Classified Advertising are: 3 Days, 12 Words, only \$1.00. 5 Days, 12 Words, is only \$1.50. Additional words over 12 is 10c extra per word, per day.

Kernel Personals will be run one day, maximum 8 words, FREE! Just use the form below and indicate that it is a "PERSONAL" Classified:

Personal: \_\_\_\_\_

Please Print your classified here:

\_\_\_\_\_  
 \_\_\_\_\_  
 \_\_\_\_\_

Additional Words: \_\_\_\_\_

Number of days to be run: \_\_\_\_\_

Heading (Wanted, For Sale, etc.): \_\_\_\_\_

Your Name: \_\_\_\_\_

Your Phone: \_\_\_\_\_

Make your check payable to The Kernel Press, Inc. Mail it with this form or bring it by our office, Rm. 210, Journalism Bldg. Payment must be included with ad.

**KERNEL**  
**258-4646**  
**CLASSIFIEDS**



SWA's not doing what you wish it would?  
Get into office and change things!

**SOCIAL WORK IN ACTION**

is now accepting self-nominations for the 1975-76 offices of President, Vice-President, Secretary-Treasurer. Candidates must be full-time undergraduates enrolled in the College of Social Professions, and must have G.P.A.'s of 2.50 or above.

Nomination forms are available in the SWA mailbox, P.O. T. 402, and must be returned by 4:00 p.m., April 17, 1975.

Elections will be held Mon. & Tues. April 21 and 22, 10:00 a.m. - 3:00 p.m., P.O. T. 402.

All full-time Social Professions undergraduates are eligible to vote.

**LEONOPRINT**

390 EAST MAIN STREET LEXINGTON, KENTUCKY 40507 PHONE 253-2003

1030 EASTLAND SHOPPING CENTER LEXINGTON, KENTUCKY 40505 PHONE 254-1244

Posters Flyers  
Bulletins Resumes  
Announcements Newsletters

**Serving The UK Community**

**..it's a \$ALE!**

**Famous Brand Denims**

Regularly 12.50	BELLS	SALE 11.50
Regularly 16.50	JACKETS	SALE 12.99
Regularly 13.00	CORDS	SALE 8.99
Regularly 32.50	COATS	SALE 30.99
Regularly 14.00	BRUSH DENIM SHIRTS	SALE 6.99

Denim Shirts Reg. 12.99 SALE 10.99  
Wrangler & Lee Bells Reg. 12.00 SALE 6.00

*Downtown*  
*Denim and Casual*

**347 West Main 255-8214**

The Student Center Board presents

**A LECTURE BY**

**JEB**

**MAGRUDER**

Tues. April 15 8p.m.

Memorial Coliseum

**admission-free!**

## Candidates dish out politics . . .

By JOHN SCHAAF  
Kernel Staff Writer

In the dining room of the Delta Delta sorority house Monday night a generous portion of student politics was dished out for approximately 50 hungry listeners.

The candidates for Student Government (SG) president and vice president appeared at the sorority house to debate the issues of this week's SG election.

AFTER LISTENING to 22 senatorial hopefuls make brief statements concerning their qualifications for election, the crowd waited restlessly for the confrontation between Jim Harralson and Craig Meeker, both seeking the presidency, and vice-presidential hopefuls Sherry Allen and Glen Stith.

Speaking first, Meeker, SG political affairs director, promised the group that if he were chosen as president, "I will fight to see that all vestiges of sexual and racial discrimination on this campus are destroyed." Meeker advocated continued participation by SG in issues he said are important to students.

He cited the Red River dam controversy as an "outside" issue which SG could legitimately participate in because of the widespread student interest.

HARRALSON, STANDING by his chair in the crowded room, criticized the administration of SG President David Mucci, who is not seeking reelection.

Harralson, a student senator, said no minutes were kept for two of the ten senate meetings held this year. "This indicates the shodiness of the present Student Government operation," he said.

Both Harralson and Stith, his running-mate, said SG should

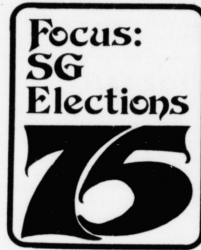
adopt a more organized and systematic way of operating.

"STRUCTURE IS THE key," Stith said. "You've seen the shambles that Student Government is in. We need some order in the conduct of business."

Harralson said his platform included a section providing for the "re-structuring of Student Government." He said this restructuring included a proposal to remove the SG president as Student Senate chairperson.

Allen, Meeker's running-mate, is an administrative aide to Mucci. She said, "If Harralson is elected he will have to spend the entire first semester of next year worrying about re-structuring SG and there won't be time to consider any real concerns which students have."

ALLEN SAID SHE is particularly interested in the status of women on the UK campus. If elected, Allen said she and Meeker would work for University sponsored day care centers and continued improvement in the UK handbook *Women in the Ivory Tower*.



## . . . Senator hopefuls speak at forum

By NANCY DALY  
Associate Editor

Candidates for the Student Senate picked at the Meeker-Allen slate as their bone of contention at Monday's Student Government (SG) election forum at the Delta Delta sorority house.

All but one of eight speakers running independently of the ticket headed by Craig Meeker and Sherry Allen attacked the slate. For instance, Julie Watkins, candidate for education senator, called it a "pre-packaged clique" which, if elected, would mean "pre-arranged and pre-catered representation."

ALTHOUGH SOME slate candidates criticized the fact that the slate has become the central issue of the campaign, all spent most of their allotted three minutes defending their decisions to run with Meeker and Allen.

The slate candidates ran through a long list of titles they now hold in the administration of SG President David Mucci. SG commissioners of finance (Jim Metry) and physical environment (Doug Cox) are running for the senate, as are the directors of student affairs (Debi Young) and academic affairs (Marion Wade).

Other slate candidates who spoke have been involved with the Red River Defense Fund (Shelly Griffith), Free University (Maddie Teller) and debate (Gil Skillman and Joe Wright).

MARK Shelbourne, senator-at-large candidate, said student apathy has allowed such activists to gain a "stranglehold on Student Government to further their own interests."

Senator-at-large Reid Rip-petoe, running for re-election, said SG shouldn't be the "headquarters for any particular

cause," and singled out the Gay Coalition and Red River and Grand Jury Defense Funds, which all use SG facilities.

Senate candidate Hal Haering accused the 31 slate members of bunching together to ride Meeker-Allen "coattails" and to get publicity. Haering also accused the Kernel of bias in favor of the Meeker-Allen slate.

Other Meeker-Allen slate candidates speaking at the forum were Lester Wahner, engineering; Dennis George, business and economics; Andy Manchikes, senator-at-large; Janet Patterson, business and economics; Tracy Spencer, agriculture; and Stacie Meyer, education.

Other independent candidates speaking were Dave Woodrow, senator-at-large; Mark David, arts and sciences; Ron Gross, senator-at-large; and Jim Newberry, senator-at-large.

