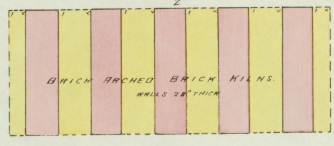
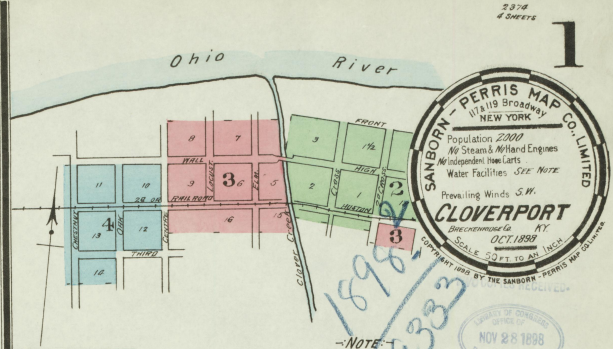
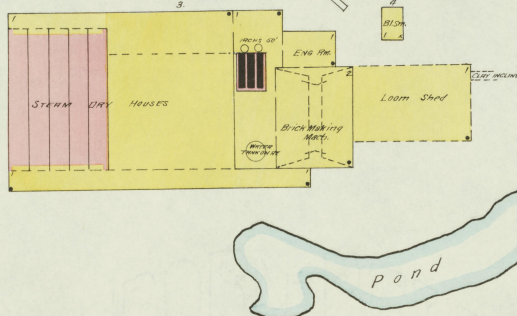


KEY

1 FIRE WALL ON ROOF
2 TRACED
3 TRACED
4 TRACED
5 TRACED
6 TRACED
7 TRACED
8 TRACED
9 TRACED
10 TRACED
11 TRACED
12 TRACED
13 TRACED
14 TRACED
15 TRACED
16 TRACED
17 TRACED
18 TRACED
19 TRACED
20 TRACED
21 TRACED
22 TRACED
23 TRACED
24 TRACED
25 TRACED
26 TRACED
27 TRACED
28 TRACED
29 TRACED
30 TRACED
31 TRACED
32 TRACED
33 TRACED
34 TRACED
35 TRACED
36 TRACED
37 TRACED
38 TRACED
39 TRACED
40 TRACED
41 TRACED
42 TRACED
43 TRACED
44 TRACED
45 TRACED
46 TRACED
47 TRACED
48 TRACED
49 TRACED
50 TRACED
51 TRACED
52 TRACED
53 TRACED
54 TRACED
55 TRACED
56 TRACED
57 TRACED
58 TRACED
59 TRACED
60 TRACED
61 TRACED
62 TRACED
63 TRACED
64 TRACED
65 TRACED
66 TRACED
67 TRACED
68 TRACED
69 TRACED
70 TRACED
71 TRACED
72 TRACED
73 TRACED
74 TRACED
75 TRACED
76 TRACED
77 TRACED
78 TRACED
79 TRACED
80 TRACED
81 TRACED
82 TRACED
83 TRACED
84 TRACED
85 TRACED
86 TRACED
87 TRACED
88 TRACED
89 TRACED
90 TRACED
91 TRACED
92 TRACED
93 TRACED
94 TRACED
95 TRACED
96 TRACED
97 TRACED
98 TRACED
99 TRACED
100 TRACED



ACME VITRIFIED BRICK CO.
NOT IN OPERATION 1898.
Situate 1/4 Mile E. of Clover Creek.



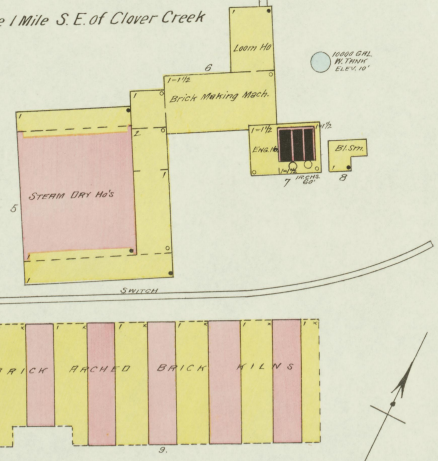
NOTE
LIGHTS: INDIVIDUAL AND COL. WHITE PAPER LIGHTS...
CLEANING OR REPAIRING...
HAND ENGINEERS...
MICROMETERED...
NOV 28 1898
U.S. GEOLOGICAL SURVEY
U.S. GEOLOGICAL SURVEY
U.S. GEOLOGICAL SURVEY

INDEX.

SPECIALS.		SPECIALS.	
A	B	C	D
Acme Vitrified Brick Co.	Baptist Church	Catholic Church	Duncan Tobacco Warehouse
American Tobacco Co.			Foster & Dolley, Saw and Planing Mill
			Gibbon Hotel
			Gregory & Co, Lime, Cement, &c.
			Gross & Miller, Tobacco Warehouse
			Lillard, S., Tobacco Warehouse
			L. H. & St. L. R. R. Shop
			Methodist Episcopal Church
			Mitchell House
			Moorman-Skillman & Co, Tob. W. H.
			Pace, J. H., Tobacco Warehouse
			Patton Vitrified Brick Co.
			Presbyterian Church
			Star Flour Mills
			Warfield, T. N., Tobacco Warehouse
			Witt, Conrad & Dyer, Wagon Works

PATTON VITRIFIED BRICK CO.
NOT IN OPERATION 1898.

Situate 1 Mile S.E. of Clover Creek



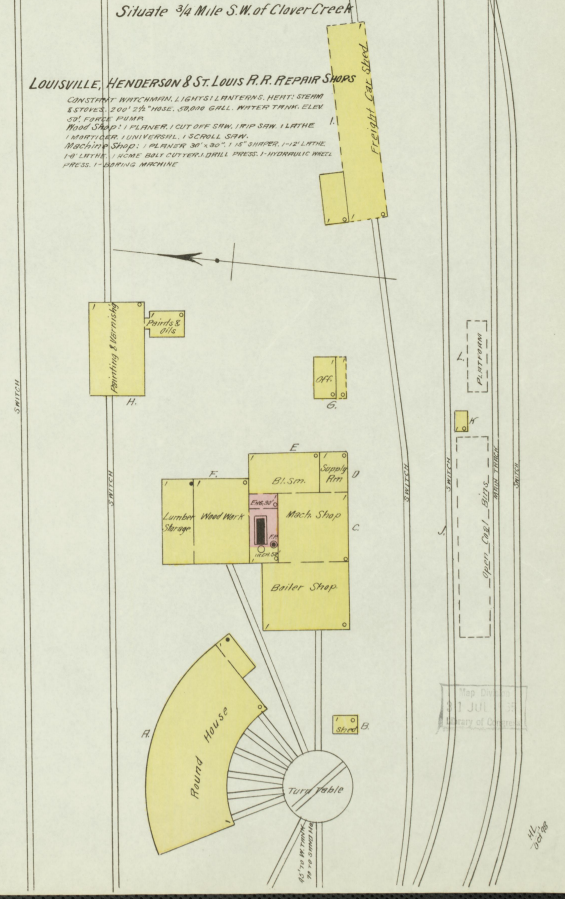
Scale of Feet.
0 20 40 60 80 100 120 140 160

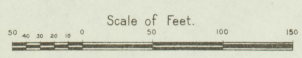
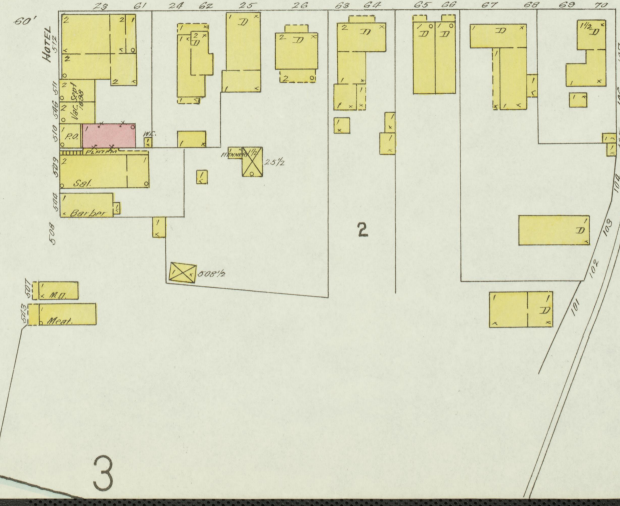
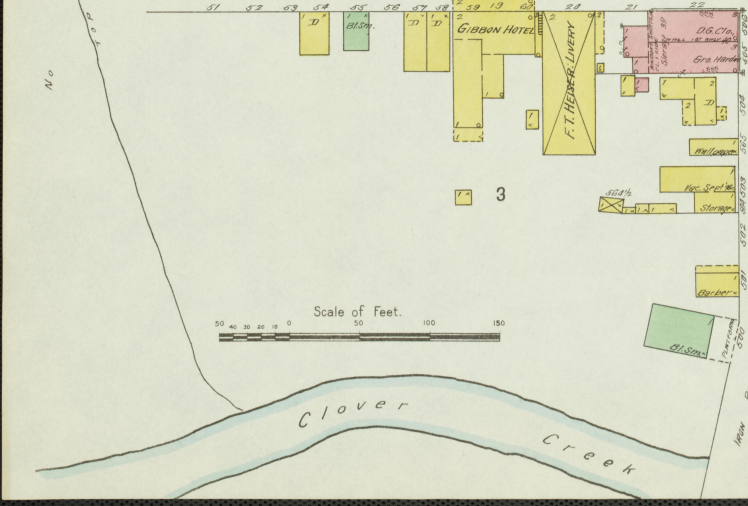
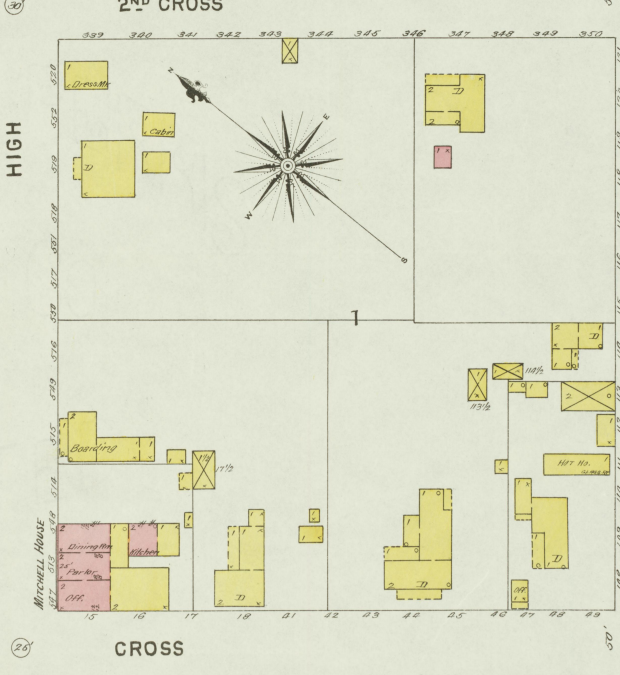
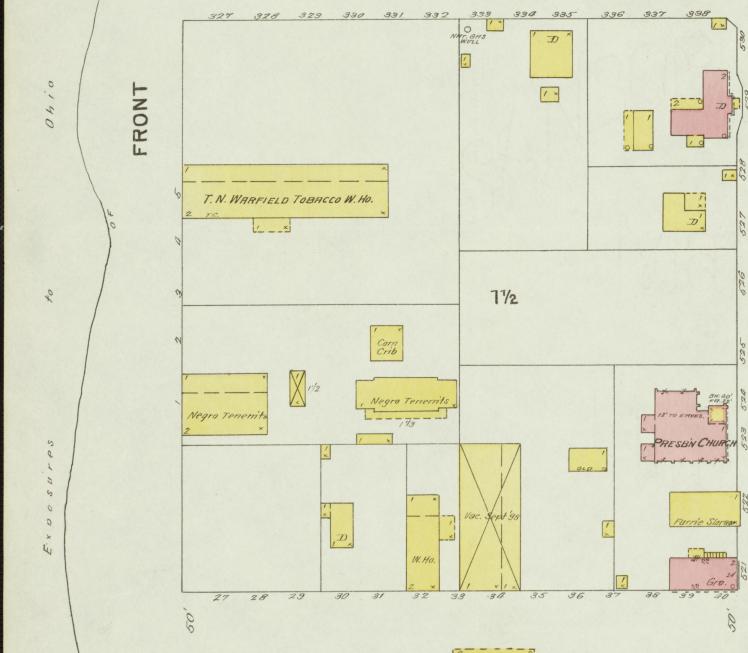
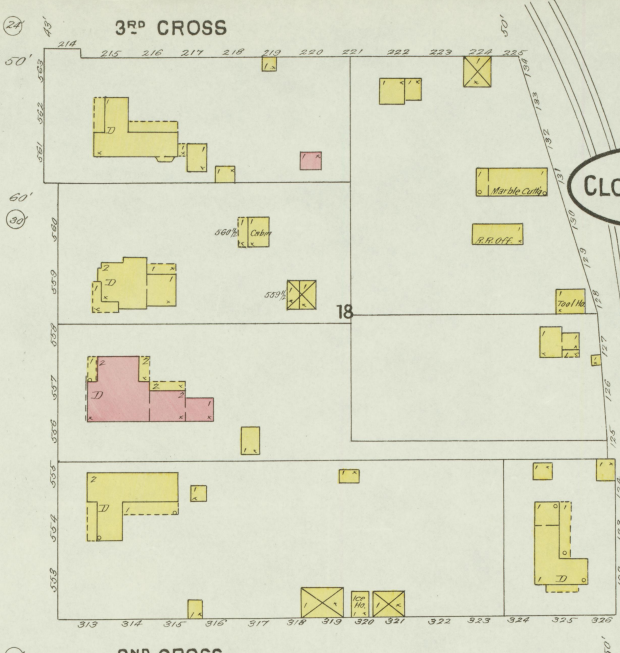
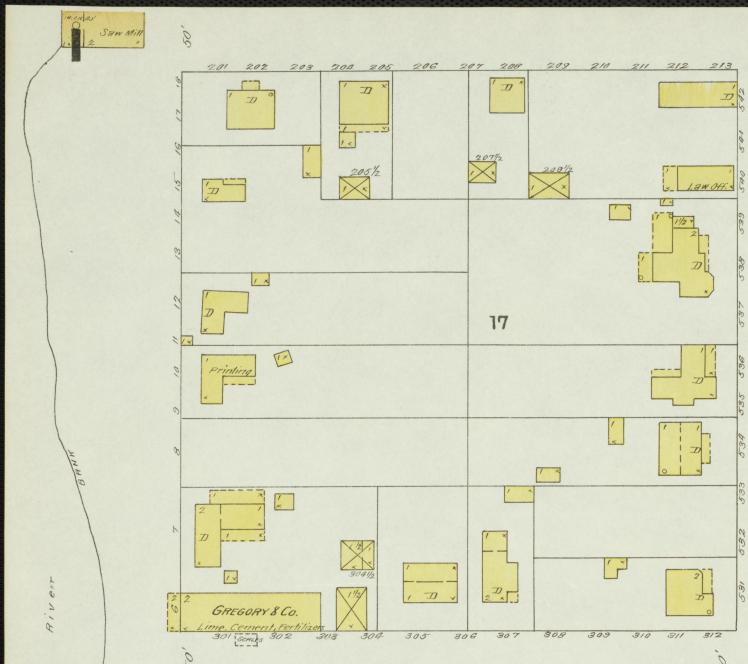
Situate 3/4 Mile S.W. of Clover Creek

LOUISVILLE, HENDERSON & ST. LOUIS R.R. REPAIR SHOPS

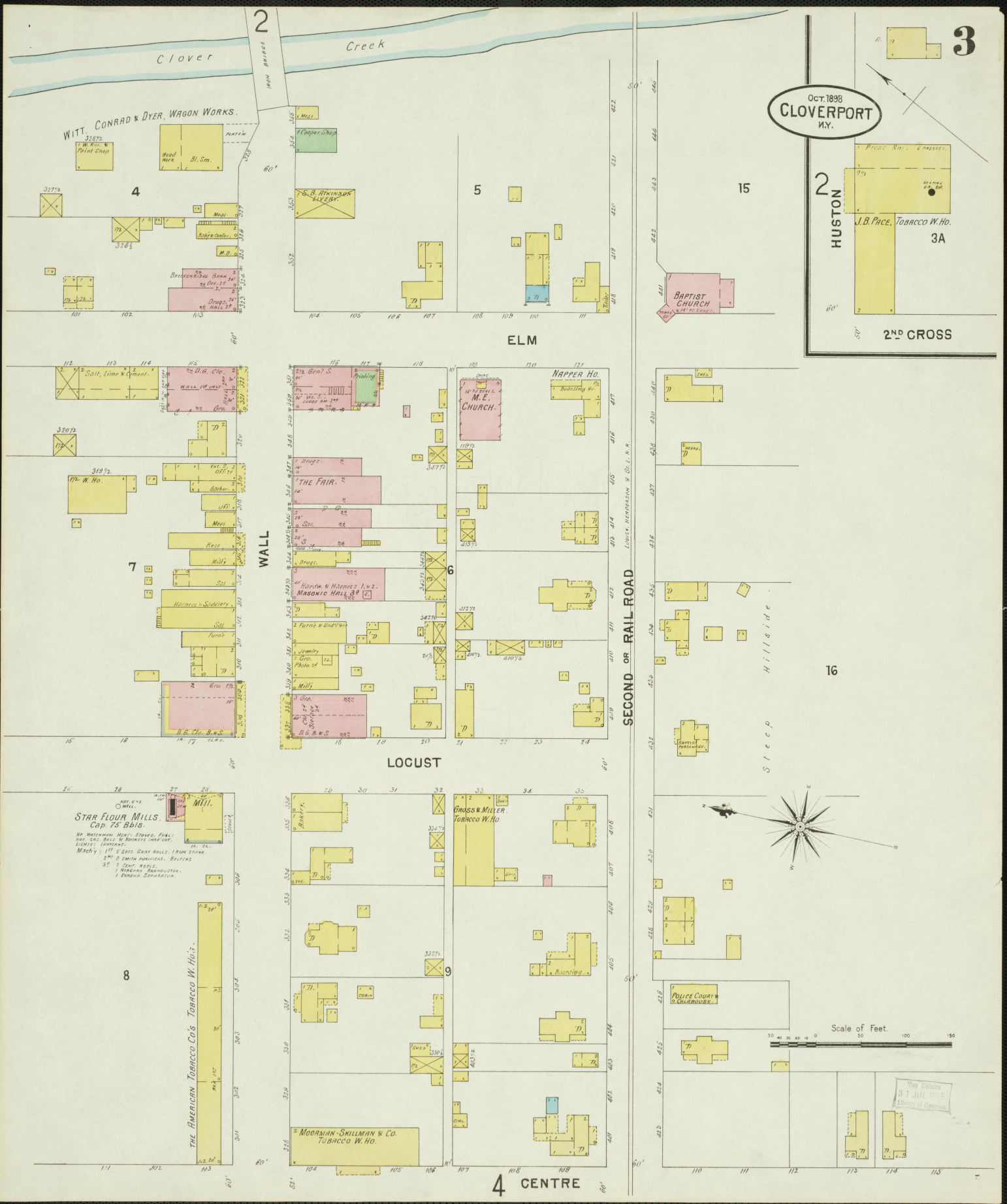
CONSTANTLY WATCHMAN, LIGHTS, LANTERNS, HEIGHTS, STAIRS, ETC. 200' 25" HOSE, RUBBER GALL, WATER TANK, ETC. 50' 25" HOSE. PUMP.

WOOD SHEDS: 1 PLANNER, CUT OFF SAW, TRIP SAW, LATHE, MORTISING MACHINES, 1 SCREW SAW, MACHINING SHOPS: 1 PLANNER 30' x 30', 1 SHAPER, 12' LATHE, 14' LATHE, 1000 GAL. STEAM BOILER, PRESS, 1000 GAL. WHEEL PRESS, 1 SHARPING MACHINE.





Map Division
31 JUL 1911
Library of Congress



OCT. 1898
CLOVERPORT
 KY.

HUSTON

J.B. FACE, TOBACCO W. HO.

2ND CROSS

ELM

WALL

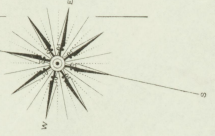
LOCUST

SECOND or RAILROAD

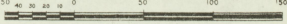
4 CENTRE

16

Steep Hillside

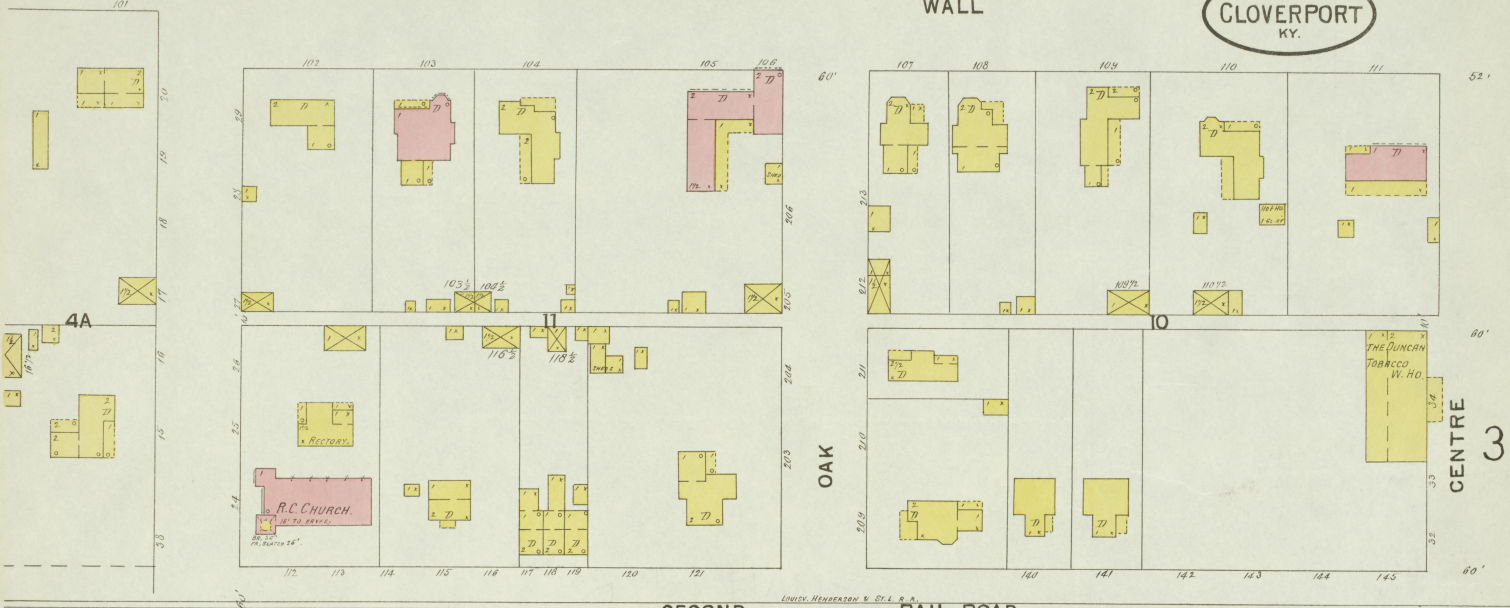


Scale of Feet.

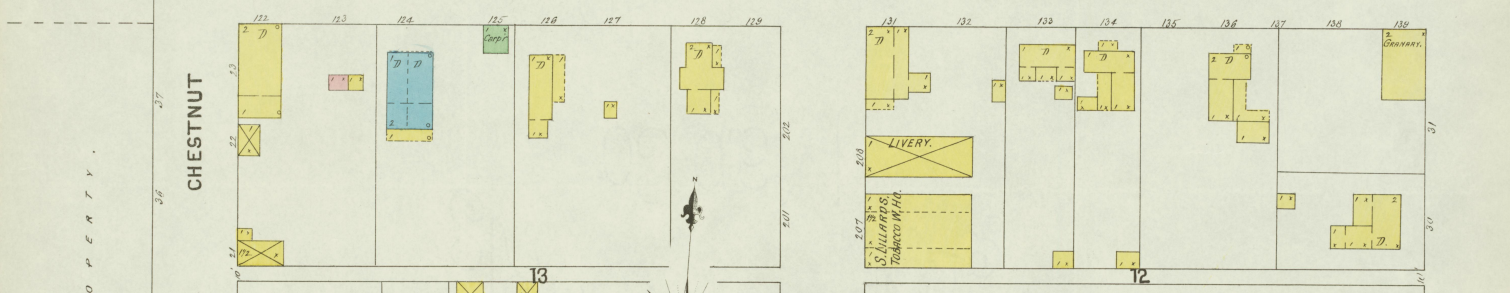


Map Given
 31 JUL 1955
 Library of Congress

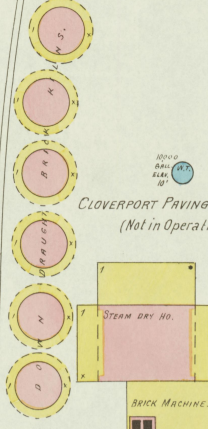
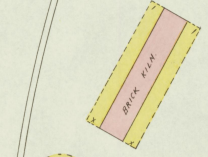
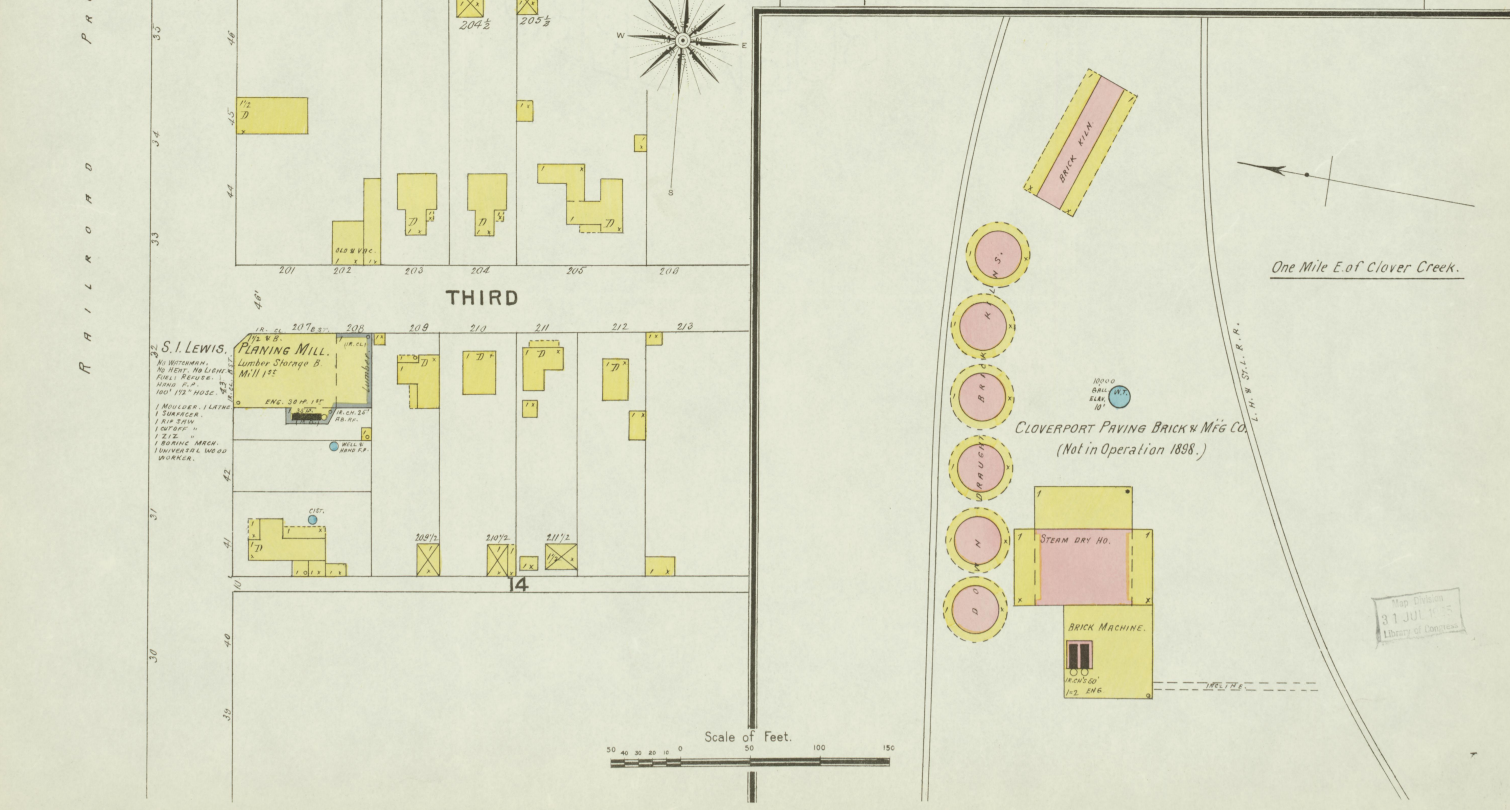
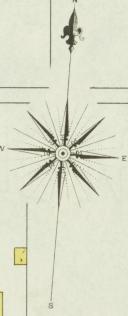
Oct. 1898
CLOVERPORT
KY.



SECOND OR RAIL ROAD



R A I L R O A D P R O P E R T Y .



CLOVERPORT PAVING BRICK & MFG CO.
(Not in Operation 1898.)

One Mile E. of Clover Creek.

Map Division
31 JUL 1898
Library of Congress

