



# Central Kentucky Jewish Federation

VOL. XI

NOVEMBER, 1988

NO. 7

## EXTREMISM THEN AND NOW



### FROM KRISTALLNACHT TO THE PRESENT... AND BEYOND: EXTREMIST ANTI-JEWISH ACTIVITY.

Gail Gans, Associate National Director of the Research and Evaluation Department of the Anti-Defamation League of B'nai B'rith will address the Central Kentucky community on this compelling topic.

The event will mark Central Kentucky's observance of the fiftieth anniversary of Kristallnacht. As part of this observance, the CKJF Community Relations Committee will present "Shoah" the documentary by Claude Lanzmann to the Lexington Public Library.

There have been incidents of anti-Semitic activity in surrounding states in the last six months, and this should be both a thought-provoking and educational evening.

The event is sponsored by the Stanley Rose Lodge of B'nai B'rith, Central Kentucky Jewish Federation, Temple Adath Israel, Ohavay Zion Synagogue, Lexington Havurah, and the Lexington Chapter of Hadassah.

The program is free and open to the entire community of Central Kentucky. Please encourage the attendance of your friends and colleagues.

# KRISTALLNACHT

## WHAT IS KRISTALLNACHT?

On November 9, 1938, Germany's skies were ablaze as Nazi hordes smashed windows and torched Jewish homes, synagogues, schools, centers and businesses in the **Night of Broken Glass**, that forever will be known as **KRISTALLNACHT**. These riots marked a major transition in Nazi policy, and were, in many ways, a harbinger of the "Final Solution."

## THE LEGACY OF KRISTALLNACHT

There are important lessons to be drawn from Kristallnacht, for it served as a bridge experience for both Jews and Nazis. For the Jews, there was the terrifying realization that political anti-Semitism can lead to violence, even in Western Civilization. It also demonstrated that apathy can still pervade the world when the lives of Jews or other minorities are threatened.

For the Nazis, Kristallnacht taught that while the world might condemn their pogroms, it would not actively oppose them. World opinion, however, taught the Nazis the value of secrecy in the perpetration of future actions against Jews. Added to the complaints of Germans offended by the random violence of Kristallnacht, the stage was set for the "Final Solution"--the organized, bureaucratically efficient genocide of 6,000,000 men, women, and children.

In retrospect, Kristallnacht was more than the shattering of windows and illusions. It portended the physical destruction of European Jewry. As such, this commemoration must be observed both as a memorial and as a warning.

**"I myself could scarcely believe that such things could occur in a twentieth century civilization."**

Franklin Delano Roosevelt  
President of the United States  
November 15, 1938

## PBS PROGRAMS ON KRISTALLNACHT

KET, Cable 12, will air "**Kristallnacht: The Journey from 1938-1988**" on Wednesday, November 9 at 9:00 p.m. It will look at the November 9-10, 1938, events from the European perspective, examining those living in present-day Germany and Australia who were alive during Kristallnacht and comparing life then and now.

KET, Cable 12, will also air a one hour documentary, entitled, "**More Than Broken Glass: Memories of Kristallnacht.**" It includes interviews with television personality and author Dr. Ruth Westheimer and with Ernest Michel, Executive Vice President of the New York United Jewish Appeal Federation campaign, a Kristallnacht witness and Auschwitz survivor. This program will be shown Saturday, Dec 3 at 8 p.m.



November 9-10, 1938. Jewish homes, stores and synagogues were vandalized in Nazi Germany and Austria. The response of American Jewish leaders was the creation of the United Jewish Appeal on January 10, 1939 for unified fund raising for aid to European Jews, mass resettlement in the land of Israel, and assistance to refugees in the United States. This year, the UJA celebrates its 50th anniversary. Today's UJA/Federation Campaign is the largest Jewish philanthropic effort in the world.

--UJA Press Service Photo

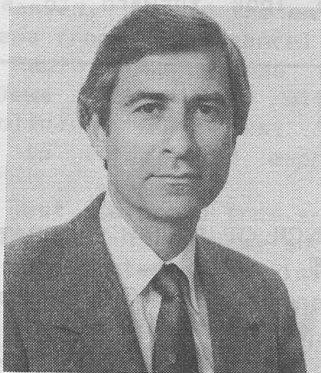
# CAMPAIGN NEWS

## 1989 CKJF CAMPAIGN KICK-OFF

Wednesday, September 28, Dan Scemama, an Israeli Broadcast Journalist, was in Lexington to help kick-off the 1989 Campaign. Mr. Scemama met with members of the Campaign Committee to give them an update on Israel and to solicit them for their 1989 contributions. That evening, he also solicited the CKJF Board. We believe that leadership should lead, so this year we were committed to the idea of the leaders of our organization pledging first. Card for card there was a very significant increase. If this is any indication, we can look forward to our most successful campaign in 1989.

## STEVE CALLER TO HEAD MEN'S DIVISION

The 1989 Men's Division will be chaired by Steven Caller. Steve brings much experience and enthusiasm to this post. He is already hard at work with exciting plans for 1989.



## MARILYN GALL JOINS WOMEN'S CAMPAIGN

Ellie Goldman, Chair of the 1989 Women's Division, announced that Marilyn Gall has joined the Campaign as Vice-chair of the Women's Division. Cheri Rose will continue as Co-chair before assuming leadership of the 1990 Women's Division Campaign.



## WOMEN'S BOARD MEETING

The opening meeting of the Board of Directors for Women's Division successfully met on Wednesday, October 25 at 8:00 p.m. at the home of Cheri Rose. Linda Sher, a Jewish Affairs Activist and an expert on the American political scene came from Chicago to address the board. At this time, the leaders of Women's Division were solicited for their 1989 gifts, which resulted in a 12% increase over 1988's giving.

## HOLD THESE DATES

### PACESETTERS - Monday, November 21

This event, for women contributing \$600 or more, will be a special evening. Plan to be there to enjoy a lovely dinner and a speaker you won't want to miss. Watch for further information.

### GUARDIANS OF ZION - Sunday, December 4

Co-chairs Harriet & Leon Cooper and Vinnie & Lou Dubilier are planning an elegant evening for our major gifts affair (men and women contributing \$1,500 or more). Details and invitations will follow. The event will take place at Ohavay Zion Synagogue.

### ISRAEL MISSION - January 15-25, 1989

Make plans now to join the Lexington contingent for what will be 10 of the most special days of your life. Cost of the Israel trip is \$1,875 from New York. Contributors to CKJF of \$1,000 or more will be eligible for a \$500 subsidy from UJA and a \$500 subsidy from CKJF making the total cost \$875. Subsidies will be available on a first come first serve basis. Call Steve or Susan Caller (266-1314) or CKJF (252-7622) for further information and applications.



Ellie Goldman and Cheri Rose

Campaign (continued)

**SUPER SUNDAY - Sunday, February 26**

Co-chairs Judy Baumann and Mark Wides are organized and ready to roll. Plan to be a part of this community effort. You will be hearing more about Super Sunday soon!



**A FEW WORDS FROM THE CAMPAIGN CHAIRMAN**

This year marks the 50th anniversary of UJA. We were there then and we must be there now. Together we have saved 1,800,000 lives. We can take great pride in this accomplishment! Now, we must continue to participate in the team effort with Israel that will make today's ingathering into Israel possible. That is the responsibility of the Jews of the world.

Many dedicated people are working to make 1989 CKJF's best campaign in history. Please be a part of this effort by assuming positions in the campaign: volunteering to help, giving suggestions and constructive criticism and by contributing generously. Together, let us look for ways to make this process of "Tzedaka" better and more effective. Whatever we feel about politics, whether they be Israeli or "local," let us remember what the campaign is really about. We are talking about lives --- Jewish lives.

Thank you for your support.

Simone Salomon



**PROPOSED CHANGE TO CKJF CONSTITUTION**

The Central Kentucky Jewish Federation Executive Committee proposes an amendment to the constitution and bylaws which changes the year of service for Federation board members from January through December to May through April. In order to accomplish this, the terms of the present board and officers will be extended through April of 1989.

Since the programs and activities of the Central Kentucky Jewish Federation, with the exception of Camp Shalom, normally run on a September to May schedule, the adjustment to our electoral process would enhance the smooth and productive fulfillment of these programs.

**CKJF ANNUAL MEETING** will take place at Temple Adath Israel on Wednesday, November 30th at 8:00 p.m. The amendment to the constitution will be discussed at this time. We look forward to seeing you there!

**COUNCIL OF JEWISH FEDERATIONS**



57th General Assembly  
November 16-20, 1988

**CENTRAL KENTUCKY JEWISH FEDERATION  
NEWSLETTER**

333 Waller Ave., Suite 5  
Lexington, KY. 40504  
(606) 252-7622

Gail R. Cohen, President  
Linda Ravvin, M.L.S., Administrator  
Charlotte Levy, Editor  
Betty Hickey, Office Manager

**MEMBER**  
Council of Jewish Federations

## WHY ARE AMERICAN JEWS STAYING HOME?

**Editor's Note:** The following article was written by Vic Gelb and excerpted from Community, a publication of The Jewish Community Federation of Louisville, Inc., dated August 26, 1988. Mr. Gelb, serving as national vice chairman of the United Jewish Appeal, as well as chairman of the Jubilee Mission for the Midwest (slated for fall '88) recently spent a whirlwind 50 hours in Israel. His account follows:

"Why aren't American Jews coming to Israel?"... "Why are the German goyim coming"..."We shouldn't have to beg American Jews to come." Those were some of the many questions and concerns expressed to me in Israel last week by Israelis from all walks of life--and from every part of the political spectrum.

They were also the first words spoken by Israeli Defense Minister Yitzhak Rabin when we met with him in his office. "Why," he asked, "would the entire group of 250 Jews from Miami cancel plans to visit?" Rabin understands there are American Jews who disagree with current Israeli policies, but asks, "Why don't they come to Israel and express those concerns?"

I have just returned from spending 50 hours in Israel. It was my shortest but one of my most interesting visits in the last 30 years. My visit was as a member of a special task force of 24 under the leadership of Bennet Aaron of Philadelphia.

The task force was put together in response to Israeli concern about the sharp drop in tourism. Although UJA missions, which brought more than 5,000 people to Israel last year, are experiencing no meaningful fall-off, other organizations are.

Our first evening in Jerusalem was spent with Teddy Kollek and more than 20 business, government, and professional leaders. The indefatigable Teddy, who has been mayor of Jerusalem since 1965, has lost none of his candor or wit. In the moments before I had the pleasure of introducing him to our group, I asked him just how safe one was in Jerusalem. "Safer than you are sitting on this couch," he said. There are problems, but nothing to warrant concern for safety by visitors, he assured me. (Indeed, we saw many tour buses and tourists in Israel,

but all were European -- with the exception of American evangelical groups.)

A good friend of Jews in Cleveland, and one of Israel's most dynamic and outspoken leaders, is Tel Aviv Mayor Shlomo Lahat. In a give and take discussion, "Cheech", as he is known, expressed great concern and disappointment over the fact that many American Jews have cancelled visits to Israel. He also let us know in no uncertain terms that he is prepared to return everything but Jerusalem to the Palestinians in return for peace.

The last two hours of our 50 in Israel were spent with Raphael Harlev, president of El Al airlines. General Harlev had recently returned from a two week trip through the U.S. His analogy: "If there were disturbances in Harlem, would you not visit New York City? Come to Israel and come now"...

Before I left Israel I had a drink with my good friend and former Clevelander, artist Yaacov Heller. He thought I was crazy for making such a short visit, but when he hugged and kissed me good-bye, he said, "Thank you for coming!" That, my friend, said it all.

DO-SI-DO AND SWING YOUR PARTNER

AT OHAVAY ZION SYNAGOGUE SISTERHOOD'S  
SQUARE DANCE

November 19, 1988, 8:00 P.M.  
Ohavay Zion Synagogue

\$7.50 per person

Tickets available at the door  
or  
by calling the Synagogue at 266-8050

Cash Bar

Hearty Snacks

## AND WHY ARE AMERICAN JEWS STAYING AT HOME AT HOME?

The percentage of eligible voters who do not participate in local, state and national elections is very high and rising. Close to 50 percent of eligible voters do not vote for President, 60 percent do not vote for Senators and Representatives, and 70-90 percent do not vote for local officials. The low turnout rate is even more startling when one considers the tremendous gains in voter participation of some minorities in recent years.

Recent studies astonishingly reveal that there are today at least one million Jews not registered to vote in this country. Exceptionally high rates (around 90 percent) of voter registration and election day turnout were a distinguishing characteristic of Jewish political behavior in the United States for decades. For a variety of reasons, including high level of education, civic pride, belief in democracy, and gratitude for the right of full participation in American national life -- a right historically denied them -- Jews have been among the nation's most dedicated participants in the electoral process.

Much to the surprise of political and Jewish experts, however, registration and voting rates of American Jews have fallen sharply in recent years. As Jews and Americans, let us exercise our voting privilege as a right and a responsibility that was not always available to our ancestors. In doing so, we can remember our co-religionists in The Soviet Union and other parts of the world who are not accorded any meaningful right to vote.

International Folk Dancing

Tuesdays, now through June

7:30 p.m.

Temple Adath Israel

## AN INTRODUCTION TO THE ISRAELI ELECTORAL PROCESS

Editor's Note: This article is based upon a guide prepared by Eve Jacobson, a master's degree candidate at Columbia's School of International and Public Affairs and a research intern in the Israel and Middle East Affairs Division of The American Jewish Committee's International Relations Department.

In Israel, as in the United States, universal suffrage permits every citizen over the age of 18 to vote. All balloting is secret. Traditionally, a very high percentage of the Israeli electorate actually votes. Every nationwide election held to date has involved more than 70 percent of the registered voters, with a high of 86 percent reached in the country's first election in 1949. By contrast, the last American presidential election was decided by barely 50 percent of the registered voters.

As in many European systems of multi-party democracy, Israeli Knesset seats are apportioned to each party by a system of "proportional representation." Voters cast their ballots for party lists, each of which acquires Knesset seats on the basis of its percentage of the total national vote. Israel does not have nationwide primaries; rather, parties select their lists by internal elections, which are often as hotly contested as general elections. Although individual "personalities" are not as important in Israeli politics as in American, a party will try to ensure that its most popular figures are represented on its list. Since party leaders know approximately how many of their list's nominees will actually enter the Knesset, competition for the guaranteed, or "safe" spots on the list is intense.

The leader of the party with the greatest percentage of the popular vote, and therefore the greatest number of Knesset seats, is traditionally invited by the president of the state to form a new government. Since no single party has ever achieved an absolute majority, governments are formed in a "coalition process" -- that is, by bargaining. The winning party seeks coalition partners among the other parties that have earned Knesset seats and together they decide which of their number will receive cabinet portfolios. Owing to a multiplicity of

continued p. 9

# WHERE THE MONEY WENT

The two graphs on the reverse side show "Where Your Money Went." Figures represent **collections** and subsequent **expenditures** during 1987.

The first graph, **1987 Campaign Collections**, shows the designated areas into which collections fall. Campaign expenses come from each area of campaign. Approximately three percent of all collections went back into the process of raising money.

The 1987 campaign was conducted under the expert leadership of Simone Salomon. Men's Campaign for that year was led by Bob Baumann; Women's Campaign by Nancy Hoffman; Ellie Goldman and Cheri Rose; Super Sunday by Vinnie Dubilier and Joe Rosenberg; Israel Bonds Campaign by Charles Stern; and the Project Renewal Campaign by Judy Baumann.

A full report of the 1988 CKJF-UJA Campaign will be released in the spring of 1989. The 1988 chairs are hard at work completing the solicitations for this campaign year and, indeed, the 1989 campaign has already begun with a board solicitation at the September CKJF Board Meeting.

In addition to the money collected and disbursed by CKJF for Campaign, UJA and local programs, we have other assets which remain as "reserve funds".

These are listed as follows as of December 31, 1987:

**Bonds:**

Ampal-American Israel Corporation..	\$15,000
City of Louisville.....	5,000
State of Israel.....	38,150
Joseph Wolf Endowment.....	15,753
Rosenberg Endowment Fund.....	13,949
Catastrophic Needs Funds.....	9,546

The second graph, **1987 Disbursements of General Campaign Funds Collected (After Campaign Expenses)**, shows how funds collected in the 1987 General Campaign, minus campaign expenses, were allocated.

As always, 70 percent of collected funds go directly to United Jewish Appeal (UJA) which in turn uses those funds to support the non-military needs of Israel and the needs of Jews throughout of the world.

Of the remaining 30 percent, a portion is retained by the Federation for use

within our local community for programs maintained by the Executive Committee, Community Relations Committee, Social Services Committee, Community Activities Committee, and Budget and Allocations Committee.

A major part of the thirty percent is also disbursed by CKJF to other charities as listed below:

**Allocations to Other Charities**

Made in 1988 based on funds collected in 1987.

Preservation of Jewish and Judaic Learning

American Jewish Archives.....	\$ 300.00
Coalition for Alternatives in Jewish Education.....	250.00
Hebrew Union College.....	350.00
Jewish Braille Institute of America, Inc., NYC.....	100.00
Jewish Education Service of North America.....	200.00
Jewish Theological Seminary of America.....	350.00
Joint Cultural Appeal .....	250.00
National Jewish Center for Learning and Leadership.....	100.00
Simon Wisenthal Center for Holocaust Studies.....	300.00
U.S. Holocaust Memorial Museum..	500.00
Yeshiva University, NYC.....	350.00

Welfare

American ORT Foundation.....	500.00
Association of Jewish Family and Children's Agencies.....	300.00
Jewish Welfare Board.....	350.00

Social Action

American Jewish Committee.....	400.00
American Jewish Congress.....	400.00
Anti-Defamation League of B'nai B'rith.....	4,000.00
National Conference on Soviet Jewry.....	350.00

Medical

National Jewish Center for Immunology and Respiratory Medicine.....	150.00
National Tay-Sachs and Allied Diseases, Association, Inc....	100.00

Jewish and Israeli Youth

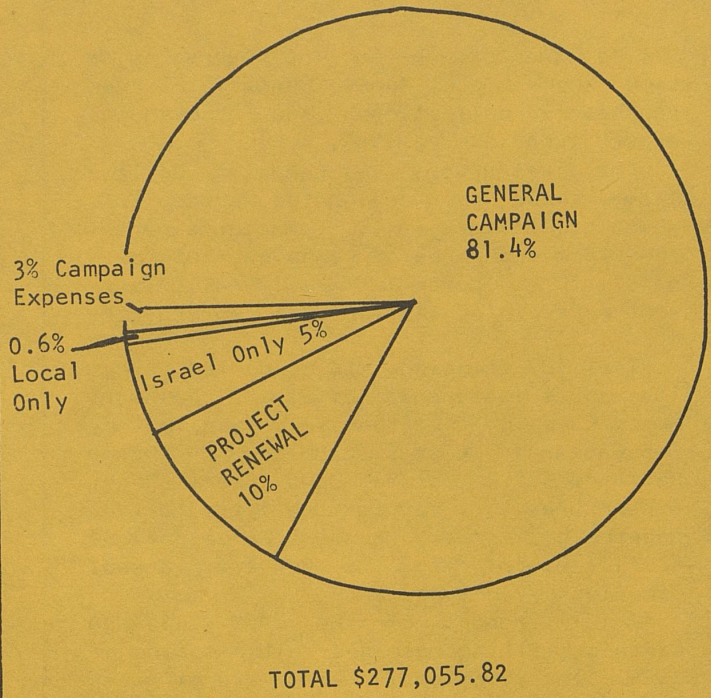
Camp Young Judaea.....	2,500.00
Goldman Union Camp Institute....	2,500.00

Local Humanitarian

BIAC International Magnet School, Fayette County.....	150.00
Kentucky Educational Television.	250.00
Community Kitchen, Lexington....	300.00
God's Pantry, Lexington.....	300.00
FCI, Lexington.....	100.00
Hospice of the Bluegrass.....	200.00
Hospital Hospitality House.....	200.00
International Book Project.....	50.00
Lexington Public Library.....	250.00
National Conference of Christians and Jews.....	500.00
Ronald McDonald House.....	400.00
Special Olympics, Kentucky.....	100.00
Catastrophic Social Needs.....	4,970.98

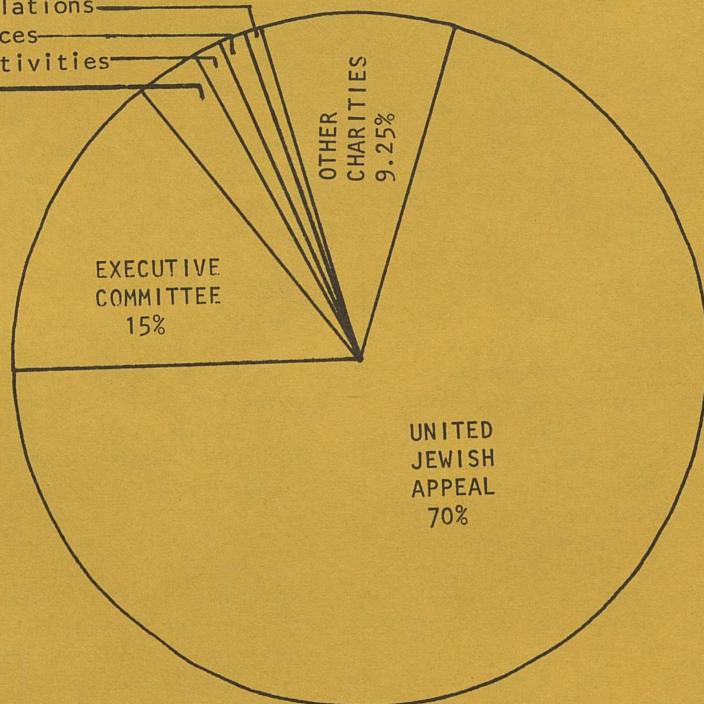
\$750.00 to Moosnick Lectureship at Lexington Theological Seminary

**I** 1987 CAMPAIGN COLLECTIONS



**II** 1986 DISBURSEMENTS OF GENERAL CAMPAIGN FUNDS COLLECTED (After Campaign Expenses)

- 0.5% Community Relations
- 1.0% Social Services
- 1.25% Community Activities
- 3.0% Encumbered



TOTAL \$228,620



## Israeli Electoral Process (continued)

parties and an ideologically fragmented and ethnically diverse electorate, every one of Israel's governments in its 40-year history has been a coalition. The present Knesset contains members from 15 different parties. Such fragmentations is possible because a mere one percent of the country-wide popular vote entitles a party to a Knesset seat. Currently, the entire country constitutes a single "electoral district," and all legislators serve a national constituency.

Alongside the tendency for fragmentation, two large electoral blocs; the Labor Alignment and the Likud (consolidation), have emerged to form the "broad center" of Israeli politics. Both of the blocs contain within them the key parties associated with the pre-state Yishuv, the Jewish community of pre-1948 Palestine.

The Alignment (Ma'arakh) coalesced in the 1960's from the parties associated with Labor Zionism and the Histadrut (the General Federation of Labor), namely MAPAI (the Israeli Workers Party), Ahdut Havodah (Unity of Labor), and MAPAM (United Workers Party). The Likud bloc, formed in the early 1970's, is the heir of Revisionist Zionism, the right wing movement founded by the pre-state ideologue, Vladimir Jabotinsky. Its constituent parts are the dominant Herut (Freedom) party of former prime minister, Menachem Begin and current premier, Yitzhak Shamir; the Liberal party (successor to the Old General Zionists); and the Independent Liberals. Herut contains within it elements of the pre-state British underground groups, such as the Stern Gang. The Likud formed the government in 1977 and 1981.

The presidency in Israel is a largely ceremonial office whose occupant functions as "head of state". The president is elected by the Knesset for a five year term, and may be reelected for one further term. The president has historically been a distinguished personality who is considered to be above the partisan political fray. The president appoints The State Comptroller, The Governor of the Bank of Israel and the judiciary and has the power to pardon and reprieve. Israel's current president is Chaim Herzog, an Irish born war hero and military historian.

A great deal of uncertainty surrounds the probable outcome of Israel's November

elections, with some commentators predicting a victory for The Likud. Others foresee a continued electoral stalemate leading to another national unity government. The Likud's rise (about four percent in every election from 1965 through 1981) is universally attributed to important changes in Israel's demographics. Likud voters tend to be younger than those of Labor, are Israeli-born or derive from Middle Eastern countries (Sephardim). Their numbers are seen to be increasing and it is widely believed that The Likud will reap the benefits.

Whatever the outcome of the November elections, reform of the electoral system has been an issue in Israeli public affairs since the 1950's. Proposals would divide the country into several electoral districts, raise the percentage of the vote necessary to enter the Knesset, or allow for regional representation. Such proposals have always failed to pass the Knesset. As so many small parties benefit under the current system, and since each of the major parties looks to the minor parties as potential coalition partners, legislation has proved difficult to enact.

## LETTER OF THANKS

We would like to send our sincere thanks to the following friends that have been kind to help us to settle down:

Joesph Kuc	Ira Mersack
Lenny Lerner	Jim Barkly
David Wachtel	Laura Mann
Austin & Susan Cantor	Bobbie Shain
Nancy Sethi	Karen Swingle
Moshe and Shlomit Elitzur	

We also very much appreciate the special efforts of Susan and Manny Mason for their vital help to get us settled down.

Reuven Reuveni

**Editor's Note:** Reuven and Avia Reuveni and their five children have recently arrived from Israel. Reuven is associated with the University of Kentucky.

## GREEN CIRCLE

**GREEN CIRCLE** is an educational program of the National Conference of Christians and Jews designed to help elementary school age children form a positive sense of self-worth and a better understanding of the differences and similarities in other people. The growth of Green Circle has been through the interest and involvement of volunteers who share a common concern for the purpose of the program. **WE NEED YOUR HELP.** Find out how you can meet the challenge of helping children reach an understanding of themselves and others. Please call Mary Saito at 278-0099 or 277-4434 and find out how you can make the circle grow.

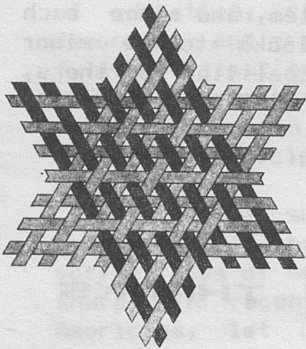
Mr. & Mrs. Joseph H. Miller  
would be honored  
to have you share their happiness  
at the Bat Mitzvah of their daughter

**Rebecca Burke**

on Friday, November 18, 1988  
8:00 p.m.  
Temple Adath Israel

Oneg Shabbat immediately following services.

Rebecca will symbolically share this occasion with Elena Kilberg of Leningrad, U.S.S.R.



## DISCOVERY 1989 MIDWEST MISSION TO ISRAEL January 15-25, 1989

**Cost:** \$1,875 per person-double occupancy  
Departure from New York  
Single Supplement-\$260

**Minimum Contribution:** \$1,000 minimum gift from the principal contributor

**Subsidy:** Each individual meeting the \$1,000 minimum gift is eligible to receive a National UJA subsidy of \$500 applicable to the mission cost. CKJF will also subsidize \$500 (on a first come-first serve basis up to a maximum of 20 participants) in order for a participant to receive the National UJA subsidy.

**Hotel Accommodations:** Deluxe accommodations\*\*\*\*\* Tel Aviv - Hilton, Tiberias - Plaza, Jerusalem - LaRomme

**Registration:** \$500 deposit must accompany each completed application.

**Changes and Cancellations:** Cancellations are subject to a \$25 processing fee per participant plus an additional \$100 fee per participant charged by airlines for cancellations received within 30 days of departure.

**Payment:** Full payment due 30 days prior to departure - 12/15/88

**For more information:** CKJF Office - 252-7622  
Steve Caller - 266-1314

## CELEBRATE JEWISH BOOK MONTH

This month is Jewish Book Month, a time of the year when the "People of The Book" celebrate their creative expression and appreciation for the written word. As an example of some of the new works available, we are including a few short book reviews of recent releases.

**Lovingkindness.** Anne Roiphe. Summit Books, 1230 Avenue of the Americas, New York, NY 10020. 1987. 279 pages. \$17.95.

Excerpted from a review by Benjamin Nelson.

**Lovingkindness** dramatizes themes that are as universal as they are contemporary: the quest for meaning and permanence in a world of shifting and temporary truths; the conflict between faith and reason, and the search for spiritual dimension in an age defined by psychological yardsticks; the parameters of guilt and responsibility; communion and separateness; and the ever-perilous-yet-ever-possible relationship between parent and child, in which lovingkindness continually hovers between what Martin Buber referred to as the "I-It" and "I-Thou" relationships, love proffered with guarantees demanded, and love as mutually addressing, tenuously but hopefully free of the exercise of power.

These motifs all exist in and are in part defined by their deeply Jewish context. Ms. Roiphe has dealt previously with the dilemma of the assimilated Jew confronted by the demands of a rigorously traditional heritage, in her autobiographical memoir, **Generation Without Memory**. She again traverses this difficult terrain with cautious but sure steps in her story of the odysseys of a mother and daughter who, in moving away from each other, may be approaching one another more meaningfully and lovingly than either one can wholly realize.

**Lovingkindness** is a philosophical work. But it is also a dramatic story told by a highly skilled and able novelist. While its themes are profound and pertinent, they never overwhelm the narrative and the characterization. The characters, particularly Annie, are multi-dimensional, and their story is unfailingly powerful and engrossing. **Lovingkindness** is Ms. Roiphe's wisest and most absorbing novel to date. It is a work of complexity and

compassion in which the author not only objectifies her personal concerns with considerable craft and skill, but presents them in such a manner as to provide the reader with a deeply moving and illuminating experience.

**Shores of Refuge: A Hundred Years of Jewish Emigration.** Ronald Sanders. Henry Holt & Company, 115 West 18th Street, New York, NY, 10011. 648 pages. \$27.95.

Excerpted from a review by Arnold Ages.

One hundred years ago 80 percent of the Jewish population of the world lived in Germany, Austria-Hungary, and Russia. A century later only Russia contains a significant number of Jewish residents while the United States and Israel are now the two greatest Jewish population centers.

The demographic change which produced this shift was occasioned by two factors -- the Holocaust, and the more than two million Jews who emigrated from Eastern Europe to these shores between 1881 and approximately 1924 when exclusionary immigration statutes arrested the flow.

Ronald Sanders has, in his new and thoughtful book, excavated the story of this huge wave of Jewish emigration to a depth that has hitherto not been reached.

He has accomplished this by dint of prodigious research into contemporary archival records from Europe, personal journals and diaries belonging to immigrants, Yiddish novels and newspapers and belletristic works, including poetry--all of which mirrored the travail of European Jewry during its several emigration waves.

Accordingly, Sander's essay is much more than an inquiry into population movements; it is a study of an age-old prejudice against Jews, how that prejudice activated their flight from countries of long domicile, and how various agencies in Europe and America sought to alleviate the plight of those on the run.

Sanders overview of a hundred years of Jewish emigration deserves a special place in every Jewish and general library.

continued next page

**Jewish Book Month (continued)**

**Israel: A Sacred Land.** Emily Taitz and Sondra Henry. Dillon Press Inc., 242 Portland Avenue So., Minneapolis, MN 55415. 1987. 160 pages. Ages 10 and up. \$12.95.

Excerpted from a review by Gloria Goldreich.

Particularly noteworthy for the clarity of the writing and the sensitivity of approach is **Israel: A Sacred Land** which is essentially a text but is attractive and readable enough to engage a young reader independent of classroom experience. The writers provide all geographic and historic facts without overpowering the reader with dates and statistics. There is no evasion of unpleasantness. Ambivalences about the war in Lebanon are clearly stated and no judgments are rendered. Especially impressive is the recognition of the role the Arab citizens of Israel play in the life of the young nation. There is a discussion of Arab holidays and Arab customs.

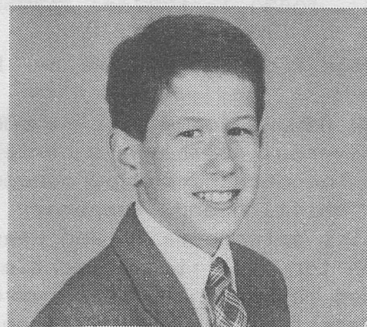
Beautiful color photographs support the strong text and it is perhaps quibbling to note that a photograph of Jerusalem's Ben Yehudah Street is captioned "The Jewish Sabbath, Shabbat, is a favorite time for a family walk down Ben Yehudah Street..." when the photograph itself portrays a workday scene with men carrying attache cases and women laden with shopping bags. Still, that is the kind of inconsistency which might catch the eye of a young reader and raise questions of credibility. This however, is an unfortunate oversight in an otherwise wonderful book.

**The Animated Israel: A Homecoming.** Ephraim Sidon; illustrated by Hanan Kaminski and Gil Elkabetz. Scopus Films, Suite 1102, 150 Fifth Avenue, New York, NY 10011. 1987. 48 pages. Ages 5 to 10. \$14.95.

Excerpted from a review by Gloria Goldreich.

Ephraim Sidon utilizes the rhythms of Dr. Seuss in **The Animated Israel**, a fanciful picture book for very young children which tells the story, in rhyme, of stars, birds, a tree and two children who re-create the vast panorama of Jewish history. Endearing in places, confusing in others, but always lively and innovative, this bright, oversized volume will be a welcome addition to the juvenile

Jewish bookshelf. Kaminski and Elkabetz deserve special kudos for their charming drawings and especially for the two-page illustration in tones of gray and umber which capture the ambience of the Holocaust. Otherwise all the illustrations are vividly colored and share a lively whimsicality.



We cordially invite you to join us in worship on the occasion of our son Douglas' Bar Mitzvah on Saturday November 12th at 10:30 a.m. at Temple Adath Israel. A Kiddush will follow.

Sincerely,  
Lauren & Harold Weinberg

THE LEXINGTON CHAPTER OF HADASSAH

presents

AN EVENING OF ORIENTAL ENCHANTMENT

**PASSPORT TO JAPAN**

Saturday, December 10, 8:00 p.m.

The HEADLEY-WHITNEY MUSEUM

Tickets \$100 Admit 2





Open Bar Tickets: 271-1489

Ticket qualifies purchaser for GRAND PRIZE DRAWING, **SEVEN DAYS IN JAPAN**. Trip for two includes air fare, hotel, and \$1,000 spending money. ONLY 250 TICKETS WILL BE SOLD. Proceeds to benefit Hadassah Medical, Vocational and Educational projects.

5749

1988

# NOVEMBER cheshvan kislev

SUNDAY	MONDAY	TUESDAY	WEDNESDAY	THURSDAY	FRIDAY	SATURDAY
<p><b>OCTOBER</b></p> <p>S M T W T F S</p> <p>1</p> <p>2 3 4 5 6 7 8</p> <p>9 10 11 12 13 14 15</p> <p>16 17 18 19 20 21 22</p> <p>23 24 25 26 27 28 29</p>		<p>1 21 CHESHVAN</p>	<p>2 22 CHESHVAN</p>	<p>3 23 CHESHVAN</p>	<p>4 24 CHESHVAN</p> <p></p>	<p>5 25 CHESHVAN</p> <p></p> <p>Chaye Sarah</p>
<p>6 26 CHESHVAN</p>	<p>7 27 CHESHVAN</p> <p>Hadassah Board Meeting</p> <p>TAI Evening Classes</p> <p>7-9 p.m.</p>	<p>8 28 CHESHVAN</p> <p>ELECTION DAY</p>	<p>9 29 CHESHVAN</p> <p>Super Sunday Mtg.</p> <p>at Bauermann's Spm</p> <p>TAI Evening Classes</p> <p>7:30-9 p.m.</p>	<p>10 1 KISLEV</p> <p>Women's Plea Mtg.</p> <p>TAI - 12 noon</p> <p>ROSH CHODESH</p>	<p>11 2 KISLEV</p> <p>CANADIAN REMEMBRANCE DAY</p> <p>VETERANS DAY</p> <p></p>	<p>12 3 KISLEV</p> <p>Douglas Weinberg</p> <p>Bar Mitzvah-TAI</p> <p>Toldot</p> <p></p>
<p>13 4 KISLEV</p> <p>Community Kristallnacht Observance</p> <p>7:30 p.m.-TAI</p>	<p>14 5 KISLEV</p> <p>TAI Evening Classes</p> <p>7-9 p.m.</p>	<p>15 6 KISLEV</p> <p>CJF General Assembly begins</p> <p>Folk Dancing</p> <p>TAI 8 p.m.</p>	<p>16 7 KISLEV</p> <p>TAI Sisterhood 12 noon</p> <p>TAI Evening Classes</p> <p>7:30-9 p.m.</p>	<p>17 8 KISLEV</p> <p>Hadassah Discussion</p>	<p>18 9 KISLEV</p> <p>Rebecca Miller</p> <p>Bat Mitzvah</p> <p>TAI</p> <p></p>	<p>19 10 KISLEV</p> <p>Havurah Services</p> <p>10 a.m. Lex. Sp. &amp; Hear. Cen.</p> <p>OZS Sisterhood</p> <p>Vayetzte</p> <p></p>
<p>20 11 KISLEV</p> <p>TAI Bagel &amp; Breakfast</p> <p>10-11:30 a.m.</p> <p>CJF General Assembly ends</p>	<p>21 12 KISLEV</p> <p>TAI Evening Classes</p> <p>7-9 p.m.</p>	<p>22 13 KISLEV</p> <p>Folk Dancing</p> <p>TAI 8 p.m.</p>	<p>23 14 KISLEV</p>	<p>24 15 KISLEV</p> <p>THANKSGIVING DAY</p>	<p>25 16 KISLEV</p> <p></p>	<p>26 17 KISLEV</p> <p></p> <p>Vayishlach</p>
<p>27 18 KISLEV</p>	<p>28 19 KISLEV</p> <p>TAI Evening Classes</p> <p>7-9:00 p.m.</p>	<p>29 20 KISLEV</p> <p>Oppressed Jewry</p> <p>Comm. Mtg.</p> <p>TAI 7:30 p.m.</p> <p>Folk Dancing</p> <p>TAI 8 p.m.</p>	<p>30 21 KISLEV</p> <p>CKJF Annual Board Mtg.</p> <p>TAI 8 p.m.</p>			<p><b>DECEMBER</b></p> <p>S M T W T F S</p> <p>1 2 3</p> <p>4 5 6 7 8 9 10</p> <p>11 12 13 14 15 16 17</p> <p>18 19 20 21 22 23 24</p> <p>25 26 27 28 29 30 31</p>

Non-Profit Org.  
U S POSTAGE  
PAID  
Permit No. 719  
Lexington, Ky

CENTRAL KENTUCKY JEWISH FEDERATION  
333 WALLER AVENUE SUITE 5  
LEXINGTON, KENTUCKY 40504-2901



## WE NEED YOU!

The Central Kentucky Jewish Federation is looking for volunteers who would be willing to give some of their time to help out the office in various capacities. We especially need people to assist with preparation of flyers, bulletins, etc, for mailing. NO EXPERIENCE NECESSARY, WE WILL TRAIN!

If you can help us out, please call the office (252-7622).

## JUDAICA HEIRLOOMS

"Judaica Heirlooms -- A Bicentennial Sampler" is a new exhibit at the Hebrew Union College-Jewish Institute of Religion's Gallery of Art and Artifacts, 3101 Clifton Avenue, Cincinnati, Ohio. It is open now through December from 11-4 Mondays through Fridays, and Sundays 2-4 p.m. Admission is free. The exhibition is organized by Gallery-Judaica Registry, and is a Designated Cincinnati Bicentennial Event.

## ABC TO AIR "WAR AND REMEMBRANCE"

Channel 36 (Cable 10) will show the ABC mini-series, "War and Remembrance" over a period of ten days starting November 13th. It is an intense and explicit Holocaust Drama which is a sequel to the 1983 "The Winds of War".