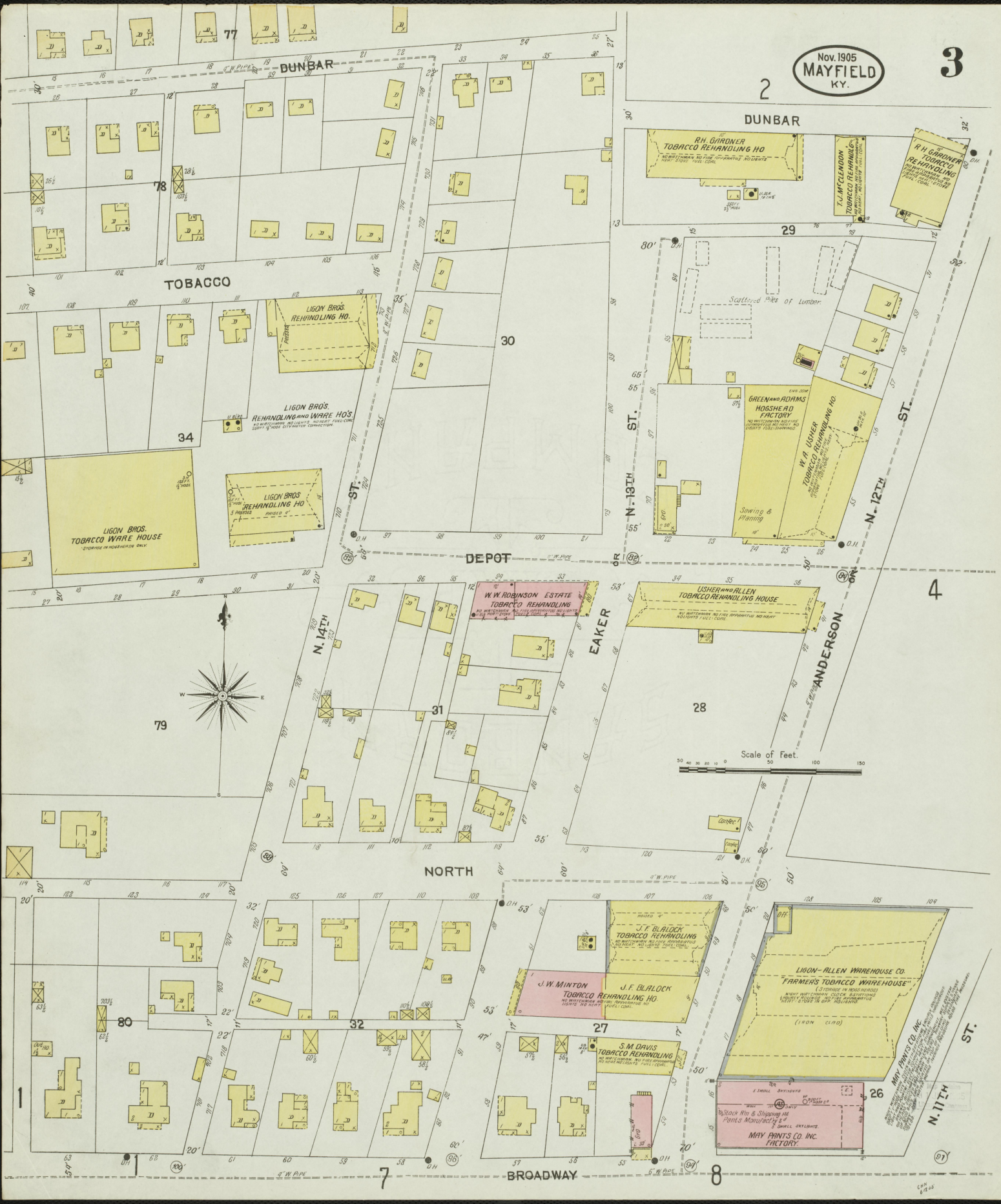


INDEX.

STREETS.	sheet	range	sheet
Anderson, see Twelfth.	A	Main, M	15-35 16
Ann,	15-20	see Sixth	
.....	161-163	Mayfield & Paris Road,	16
.....	301-324	Mill, see Twelfth.	
.....	5-11	41-59
.....	191-204	102-109
.....	201-203	101-111
.....	204-212	112-122
.....	213-224	15-20
.....	225-229	31-39
.....	230-237	41-59
.....	238-259	102-109
.....	260-267	101-111
.....	268-269	112-122
.....	270-272	15-20
.....	273-281	31-39
.....	282-283	41-59
.....	284-287	102-109
.....	288-290	101-111
.....	291-292	112-122
.....	293-294	15-20
.....	295-296	31-39
.....	297-298	41-59
.....	299-300	102-109
.....	301-302	101-111
.....	303-304	112-122
.....	305-306	15-20
.....	307-308	31-39
.....	309-310	41-59
.....	311-312	102-109
.....	313-314	101-111
.....	315-316	112-122
.....	317-318	15-20
.....	319-320	31-39
.....	321-322	41-59
.....	323-324	102-109
.....	325-326	101-111
.....	327-328	112-122
.....	329-330	15-20
.....	331-332	31-39
.....	333-334	41-59
.....	335-336	102-109
.....	337-338	101-111
.....	339-340	112-122
.....	341-342	15-20
.....	343-344	31-39
.....	345-346	41-59
.....	347-348	102-109
.....	349-350	101-111
.....	351-352	112-122
.....	353-354	15-20
.....	355-356	31-39
.....	357-358	41-59
.....	359-360	102-109
.....	361-362	101-111
.....	363-364	112-122
.....	365-366	15-20
.....	367-368	31-39
.....	369-370	41-59
.....	371-372	102-109
.....	373-374	101-111
.....	375-376	112-122
.....	377-378	15-20
.....	379-380	31-39
.....	381-382	41-59
.....	383-384	102-109
.....	385-386	101-111
.....	387-388	112-122
.....	389-390	15-20
.....	391-392	31-39
.....	393-394	41-59
.....	395-396	102-109
.....	397-398	101-111
.....	399-400	112-122
.....	401-402	15-20
.....	403-404	31-39
.....	405-406	41-59
.....	407-408	102-109
.....	409-410	101-111
.....	411-412	112-122
.....	413-414	15-20
.....	415-416	31-39
.....	417-418	41-59
.....	419-420	102-109
.....	421-422	101-111
.....	423-424	112-122
.....	425-426	15-20
.....	427-428	31-39
.....	429-430	41-59
.....	431-432	102-109
.....	433-434	101-111
.....	435-436	112-122
.....	437-438	15-20
.....	439-440	31-39
.....	441-442	41-59
.....	443-444	102-109
.....	445-446	101-111
.....	447-448	112-122
.....	449-450	15-20
.....	451-452	31-39
.....	453-454	41-59
.....	455-456	102-109
.....	457-458	101-111
.....	459-460	112-122
.....	461-462	15-20
.....	463-464	31-39
.....	465-466	41-59
.....	467-468	102-109
.....	469-470	101-111
.....	471-472	112-122
.....	473-474	15-20
.....	475-476	31-39
.....	477-478	41-59
.....	479-480	102-109
.....	481-482	101-111
.....	483-484	112-122
.....	485-486	15-20
.....	487-488	31-39
.....	489-490	41-59
.....	491-492	102-109
.....	493-494	101-111
.....	495-496	112-122
.....	497-498	15-20
.....	499-500	31-39
.....	501-502	41-59
.....	503-504	102-109
.....	505-506	101-111
.....	507-508	112-122
.....	509-510	15-20
.....	511-512	31-39
.....	513-514	41-59
.....	515-516	102-109
.....	517-518	101-111
.....	519-520	112-122
.....	521-522	15-20
.....	523-524	31-39
.....	525-526	41-59
.....	527-528	102-109
.....	529-530	101-111
.....	531-532	112-122
.....	533-534	15-20
.....	535-536	31-39
.....	537-538	41-59
.....	539-540	102-109
.....	541-542	101-111
.....	543-544	112-122
.....	545-546	15-20
.....	547-548	31-39
.....	549-550	41-59
.....	551-552	102-109
.....	553-554	101-111
.....	555-556	112-122
.....	557-558	15-20
.....	559-560	31-39
.....	561-562	41-59
.....	563-564	102-109
.....	565-566	101-111
.....	567-568	112-122
.....	569-570	15-20
.....	571-572	31-39
.....	573-574	41-59
.....	575-576	102-109
.....	577-578	101-111
.....	579-580	112-122
.....	581-582	15-20
.....	583-584	31-39
.....	585-586	41-59
.....	587-588	102-109
.....	589-590	101-111
.....	591-592	112-122
.....	593-594	15-20
.....	595-596	31-39
.....	597-598	41-59
.....	599-600	102-109
.....	601-602	101-111
.....	603-604	112-122
.....	605-606	15-20
.....	607-608	31-39
.....	609-610	41-59
.....	611-612	102-109
.....	613-614	101-111
.....	615-616	112-122
.....	617-618	15-20
.....	619-620	31-39
.....	621-622	41-59
.....	623-624	102-109
.....	625-626	101-111
.....	627-628	112-122
.....	629-630	15-20
.....	631-632	31-39
.....	633-634	41-59
.....	635-636	102-109
.....	637-638	101-111
.....	639-640	112-122
.....	641-642	15-20
.....	643-644	31-39
.....	645-646	41-59
.....	647-648	102-109
.....	649-650	101-111
.....	651-652	112-122
.....	653-654	15-20
.....	655-656	31-39
.....	657-658	41-59
.....	659-660	102-109
.....	661-662	101-111
.....	663-664	112-122
.....	665-666	15-20
.....	667-668	31-39
.....	669-670	41-59
.....	671-672	102-109
.....	673-674	101-111
.....	675-676	112-122
.....	677-678	15-20
.....	679-680	31-39
.....	681-682	41-59
.....	683-684	102-109
.....	685-686	101-111
.....	687-688	112-122
.....	689-690	15-20
.....	691-692	31-39
.....	693-694	41-59
.....	695-696	102-109
.....	697-698	101-111
.....	699-700	112-122
.....	701-702	15-20
.....	703-704	31-39
.....	705-706	41-59
.....	707-708	102-109
.....	709-710	101-111
.....	711-712	112-122
.....	713-714	15-20
.....	715-716	31-39
.....	717-718	41-59
.....	719-720	102-109
.....	721-722	101-111
.....	723-724	112-122
.....	725-726	15-20
.....	727-728	31-39
.....	729-730	41-59
.....	731-732	102-109
.....	733-734	101-111
.....	735-736	112-122
.....	737-738	15-20
.....	739-740	31-39
.....	741-742	41-59
.....	743-744	102-109
.....	745-746	101-111
.....	747-748	112-122
.....	749-750	15-20
.....	751-752	31-39
.....	753-754	41-59
.....	755-756	102-109
.....	757-758	101-111
.....	759-760	112-122
.....	761-762	15-20
.....	763-764	31-39
.....	765-766	41-59
.....	767-768	102-109
.....	769-770	101-111
.....	771-772	112-122
.....	773-774	15-20
.....	775-776	31-39
.....	777-778	41-59
.....	779-780	102-109
.....	781-782	101-111
.....	783-784	112-



DUNBAR

TOBACCO

DEPOT

NORTH

BROADWAY

N. 13TH ST.

N. 12TH ST.

N. 14TH ST.

EAKER

ANDERSON

N. 11TH ST.

R.H. GARDNER
TOBACCO REHANDLING HO.
NO WITCHES IN AD FIVE
TOWERS IN WEST IN
EIGHTS FOUR-DWARNS

R.H. GARDNER
TOBACCO REHANDLING
HO.
NO WITCHES IN AD FIVE
TOWERS IN WEST IN
EIGHTS FOUR-DWARNS

LIGON BROS.
REHANDLING HO.

LIGON BROS.
REHANDLING AND WARE HO'S
REHANDLING AND WARE HO'S
255 1/2 S. 1/2 COR. OF TOWERS

LIGON BROS.
TOBACCO WARE HOUSE
STORAGE IN WAREHOUSE ONLY

GREEN AND ADAMS
FACTORY
NO WITCHES IN AD FIVE
TOWERS IN WEST IN
EIGHTS FOUR-DWARNS

W.A. LISHER
TOBACCO REHANDLING HO.
NO WITCHES IN AD FIVE
TOWERS IN WEST IN
EIGHTS FOUR-DWARNS

LISHER AND ALLEN
TOBACCO REHANDLING HO.
NO WITCHES IN AD FIVE
TOWERS IN WEST IN
EIGHTS FOUR-DWARNS

W.W. ROBINSON ESTATE
TOBACCO REHANDLING
NO WITCHES IN AD FIVE
TOWERS IN WEST IN
EIGHTS FOUR-DWARNS

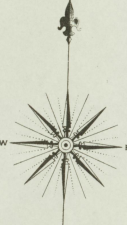
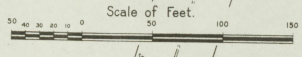
J.F. BLALOCK
TOBACCO REHANDLING
HO.
NO WITCHES IN AD FIVE
TOWERS IN WEST IN
EIGHTS FOUR-DWARNS

J.W. MINTON
TOBACCO REHANDLING HO.
NO WITCHES IN AD FIVE
TOWERS IN WEST IN
EIGHTS FOUR-DWARNS

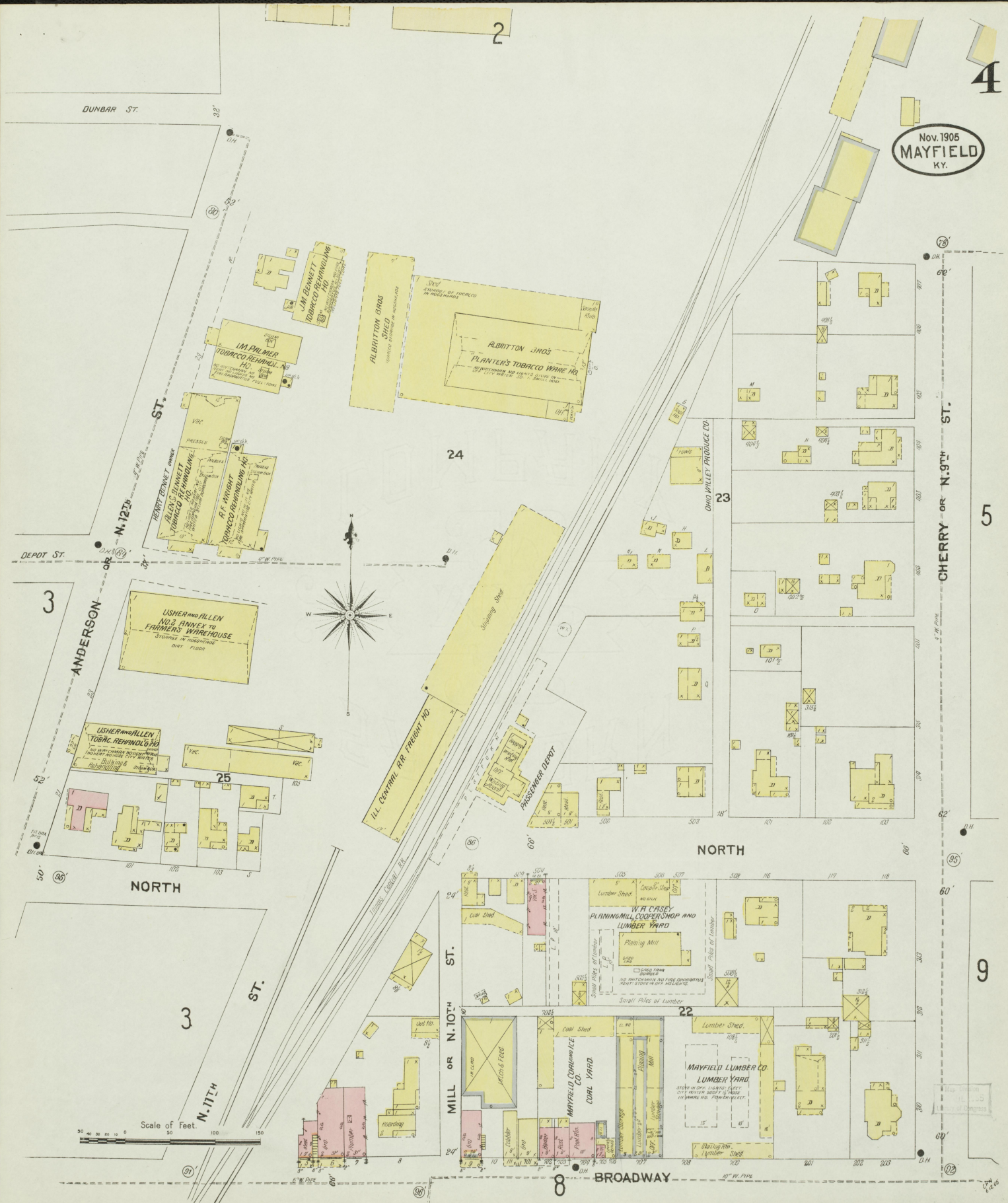
S.M. DAVIS
TOBACCO REHANDLING
HO.
NO WITCHES IN AD FIVE
TOWERS IN WEST IN
EIGHTS FOUR-DWARNS

LIGON-ALLEN WAREHOUSE CO.
FARMER'S TOBACCO WAREHOUSE
(STORAGE IN BINS HERE)
NO WITCHES IN AD FIVE
TOWERS IN WEST IN
EIGHTS FOUR-DWARNS

MAY PRINTS CO. INC.
FACTORY
3 SMALL BATHS IN
WEST CORNER
STOCK Rm & Shipping Rm
PAID MACHINERY &
SMALL EXHIBITS



Nov. 1905
MAYFIELD
KY.



4

5

9

CHERRY or N. 9th ST.

DUNBAR ST.

ST.

N. 12th

DEPOT ST.

3

ANDERSON

USHER AND ALLEN
NO. 2 ANNEX TO
FARMERS WAREHOUSE
STORAGE OF KEGS AND
OILY FLUIDS

USHER AND ALLEN
TOBAC. REFINING CO.
TOBACCO REFINING CO.
TOBACCO REFINING CO.

25

NORTH

3

ST.

Scale of Feet.

MILL or N. 10th ST.

ST.

8

BROADWAY

NORTH

24

ST.

ST.

ST.

8

8

8

8

8

8

8

8

8

8

8

8

8

8

8

8

8

8

8

8

8

8

8

8

8

8

8

8

8

8

8

8

8

8

8

8

8

8

8

8

8

8

8

8

8

8

8

8

8

8

8

8

8

8

8

8

8

8

8

8

8

8

8

8

8

8

8

8

8

8

8

8

8

8

8

8

8

8

8

8

8

8

8

8

8

8

8

8

8

8

8

8

8

8

8

8

8

8

8

8

8

8

8

8

8

8

8

8

8

8

8

8

8

8

8

8

8

8

8

8

8

8

8

8

8

8

8

8

8

8

8

8

8

8

8

8

8

8

8

8

8

8

8

8

8

8

8

8

8

8

8

8

8

8

8

8

8

8

8

8

8

8

8

8

8

8

8

8

8

8

8

8

8

8

8

8

8

8

8

8

8

8

8

8

8

8

8

8

8

8

8

8

8

8

8

8

8

8

8

8

8

8

8

8

8

8

8

8

8

8

8

8

8

8

8

8

8

8

8

8

8

8

8

8

8

8

8

8

8

8

8

8

8

8

8

8

8

8

8

8

8

8

8

8

8

8

8

8

8

8

8

8

8

8

8

8

8

8

8

8

8

8

8

8

8

8

8

8

8

8

8

8

8

8

8

8

8

8

8

8

8

8

8

8

8

8

8

8

8

8

8

8

8

8

8

8

8

8

8

8

8

8

8

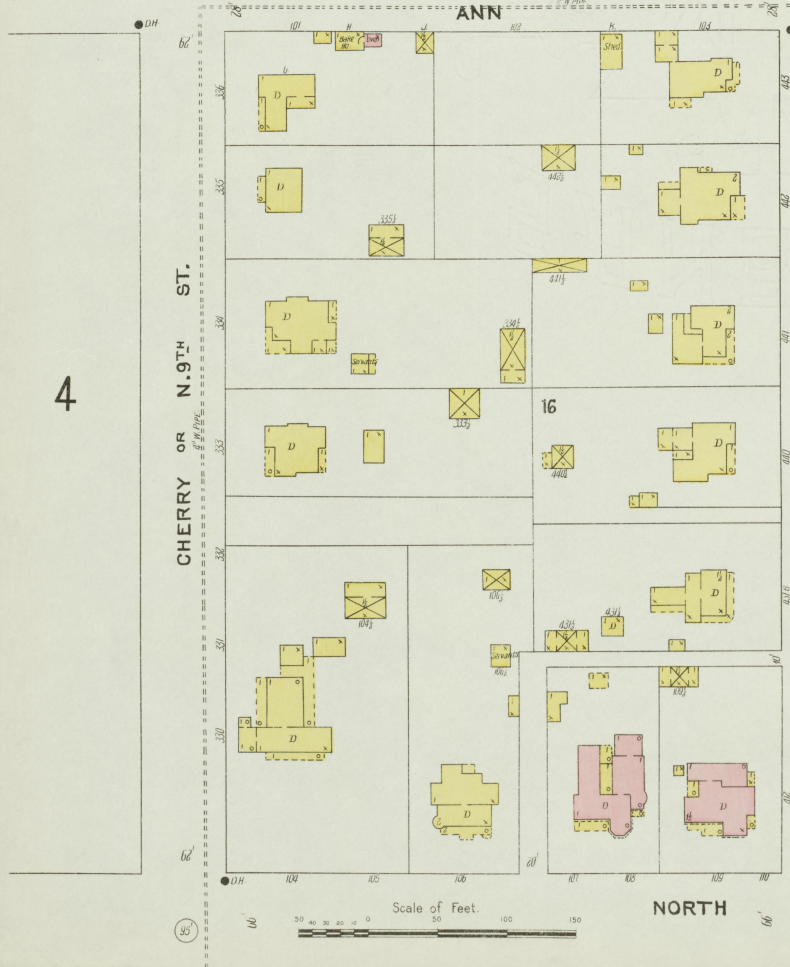
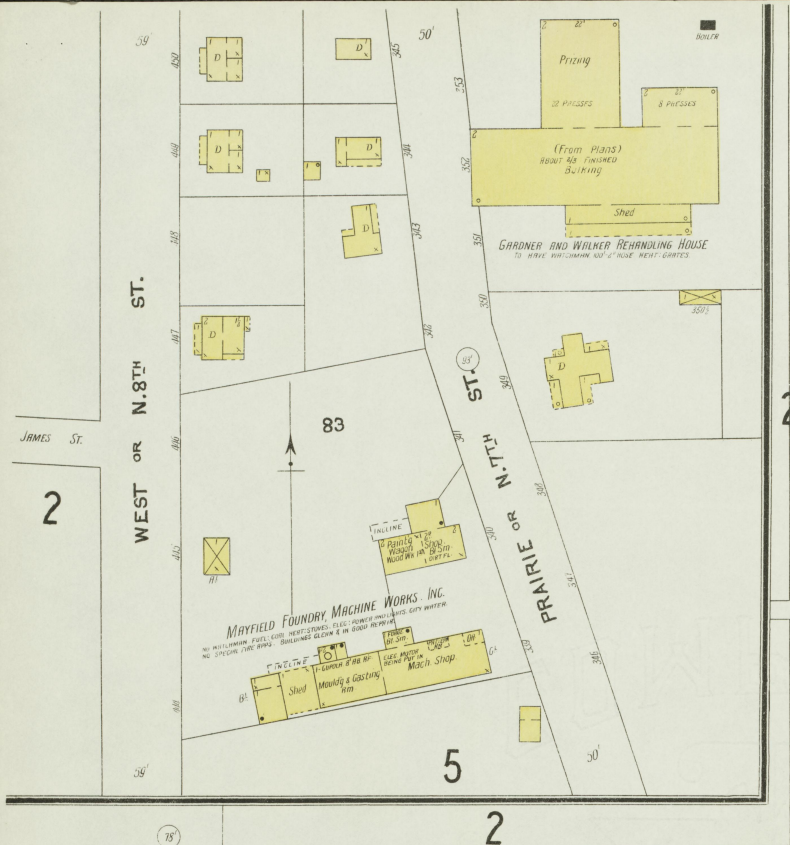
8

8

8

8

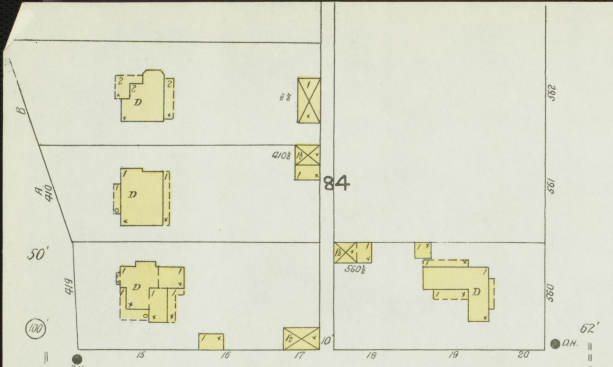
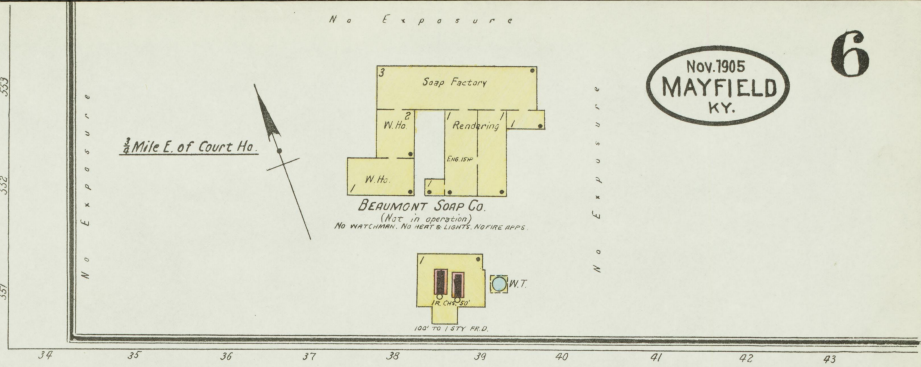
8



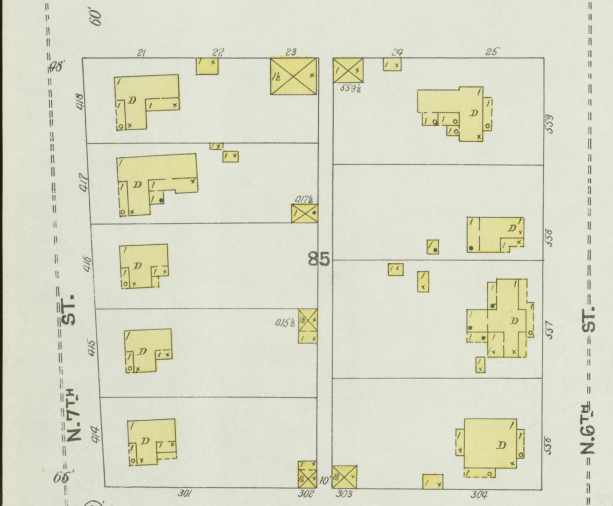
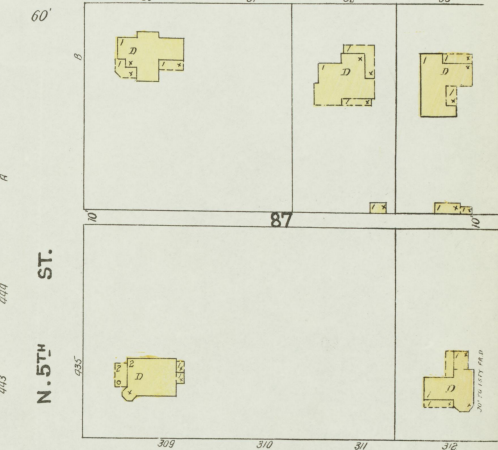
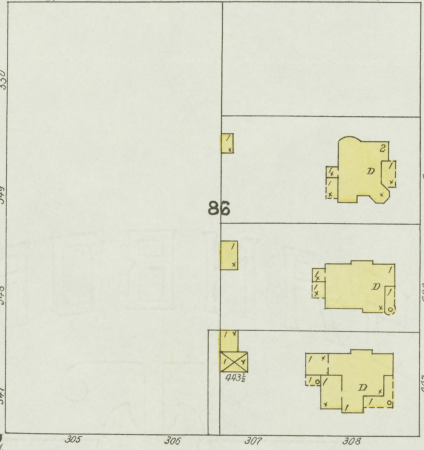
Nov. 1905
MAYFIELD
KY.

Map Division
11, 1905
Library of Congress

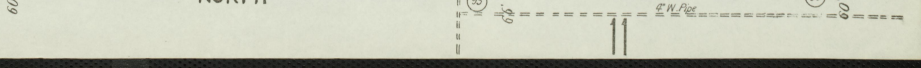
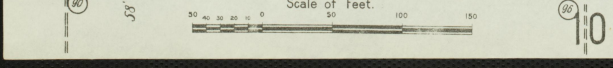
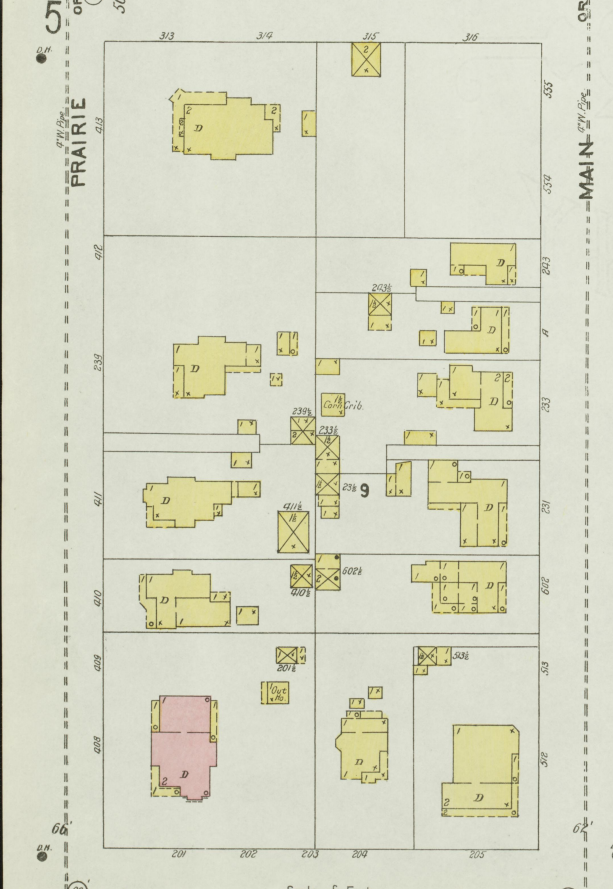
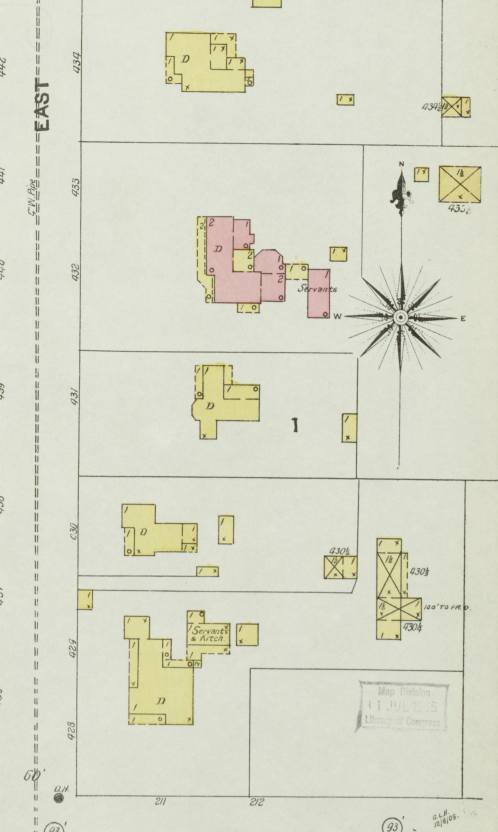
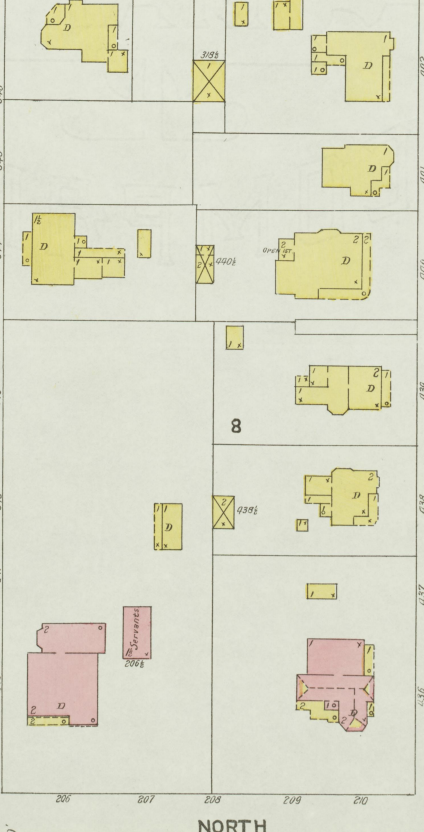
Nov. 1905
MAYFIELD
KY.



INDIANA AV. N. 5TH ST.



ANN NORTH EAST OR



Nov. 1905
MAYFIELD
KY.

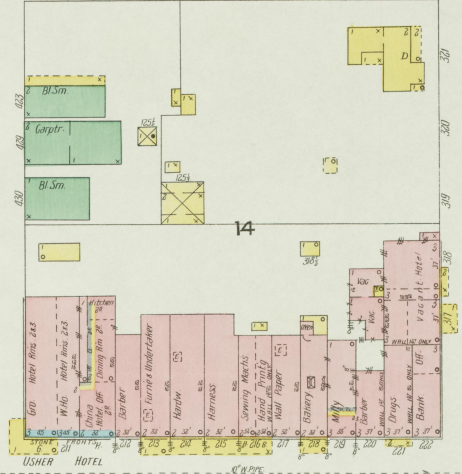
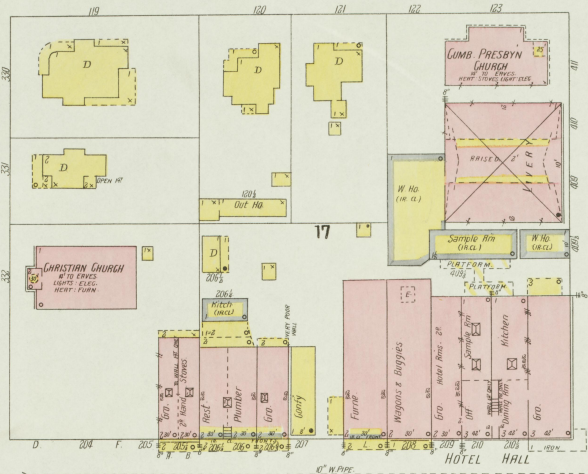
5

NORTH

CHERRY OR N. 9TH ST.

WEST OR N. 8TH ST.

PRAIRIE OR N. 7TH ST.



BROADWAY

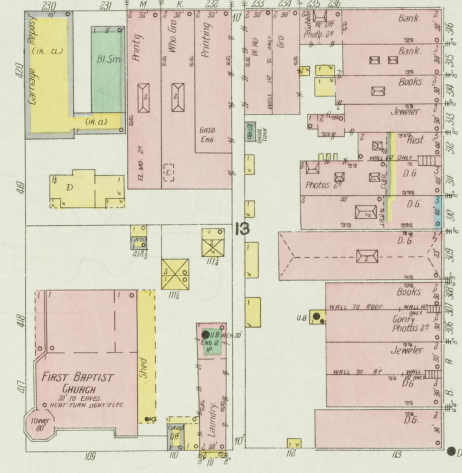
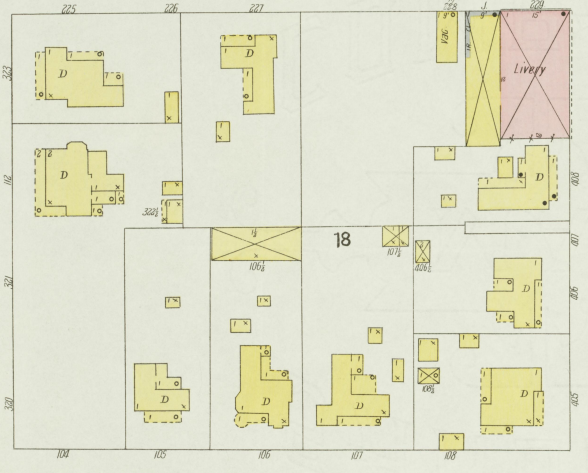
(BRICK PAVED)

4

CHERRY OR S. 9TH ST.

WEST OR S. 8TH ST.

PRAIRIE OR S. 7TH ST.



10

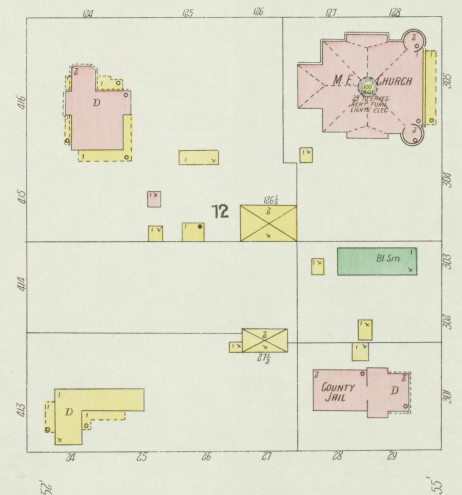
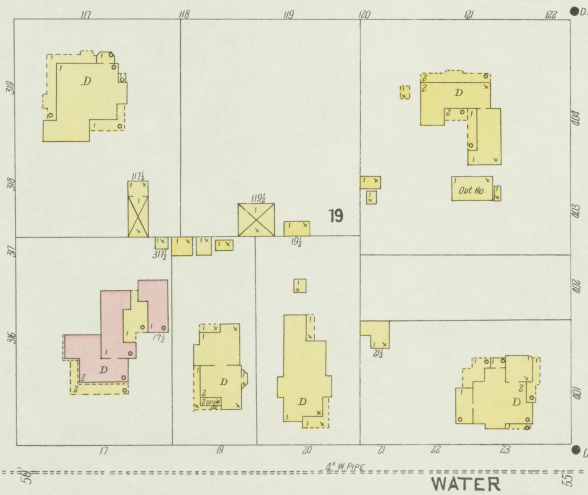
SOUTH

8

CHERRY OR S. 9TH ST.

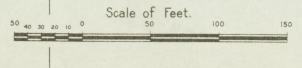
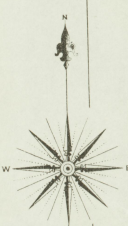
WEST OR S. 8TH ST.

PRAIRIE OR S. 7TH ST.

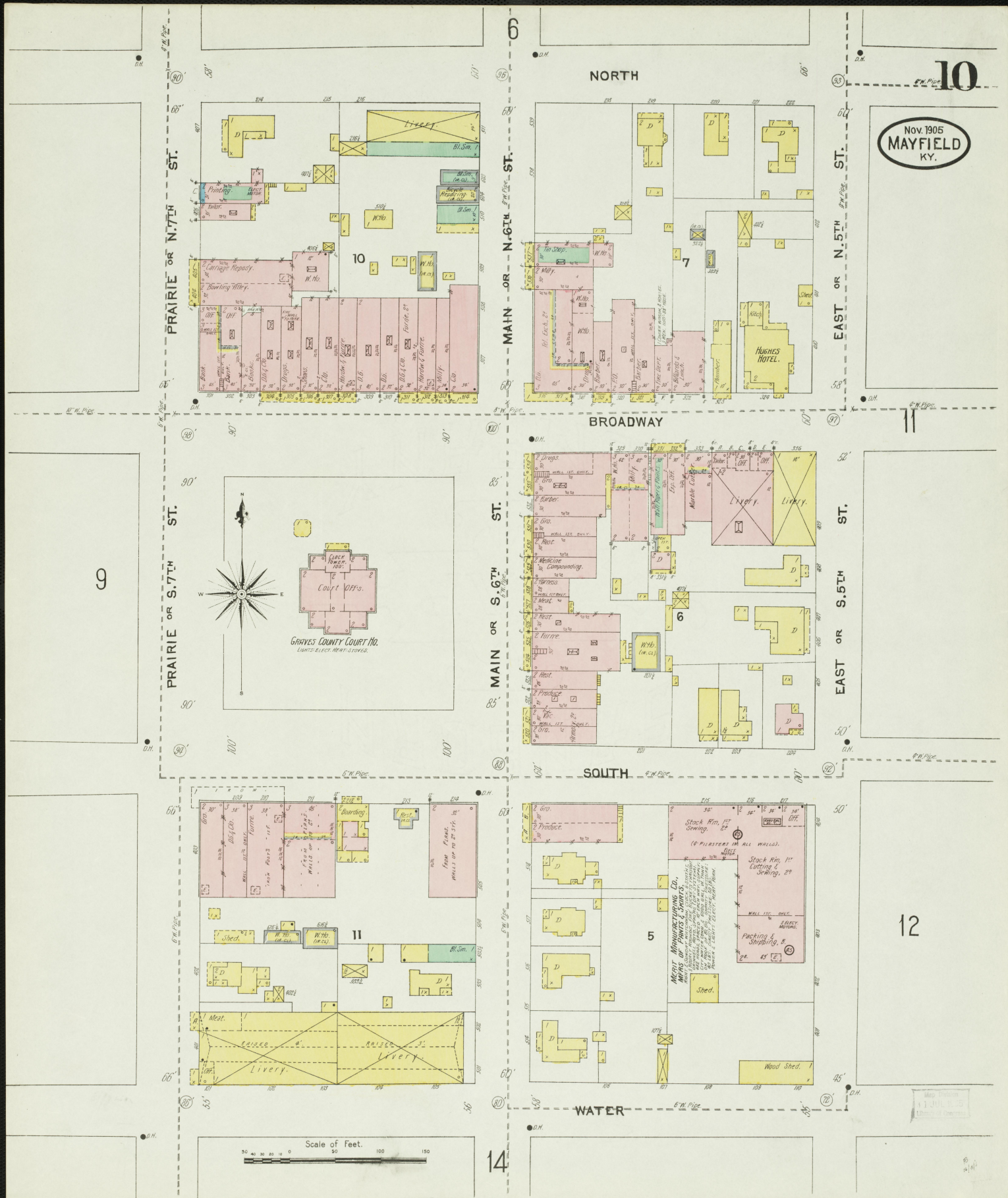


14

WATER



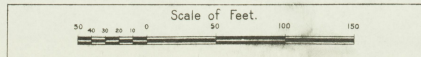
13



Nov. 1905
MAYFIELD
KY.

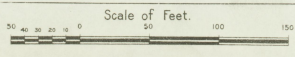
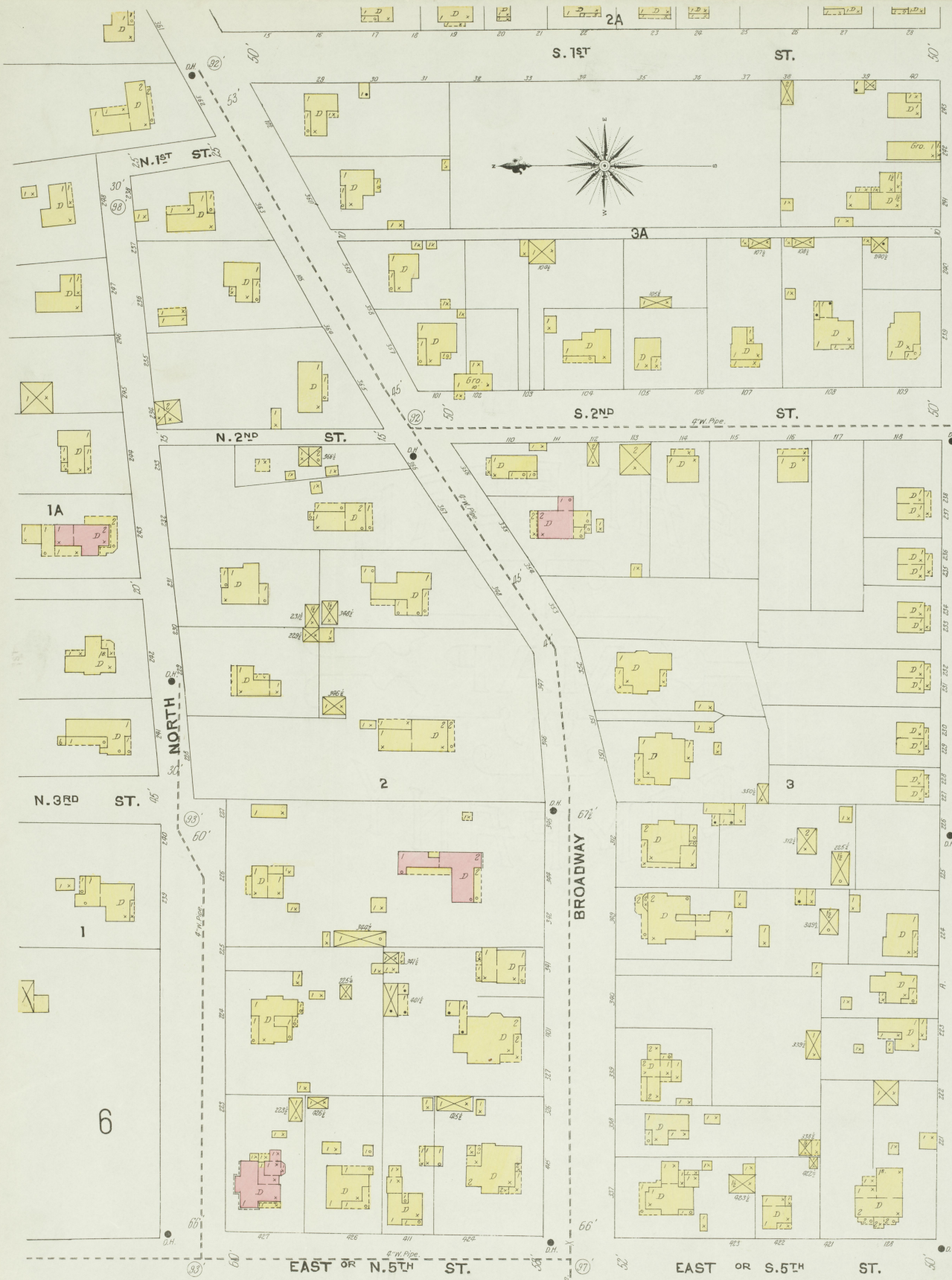
GRAVES COUNTY COURT NO.
LIVES: ELEC. MEAT STORES.

MERRY MANUFACTURING CO.
MACHS AND PARTS & SUPPLIES
MERRY MANUFACTURING CO. has been established in Mayfield, Ky. and is now manufacturing a line of machinery for the purpose of manufacturing and repairing all kinds of machinery. The company is now manufacturing a line of machinery for the purpose of manufacturing and repairing all kinds of machinery. The company is now manufacturing a line of machinery for the purpose of manufacturing and repairing all kinds of machinery.

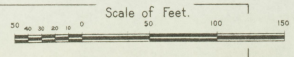
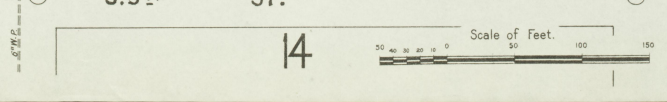
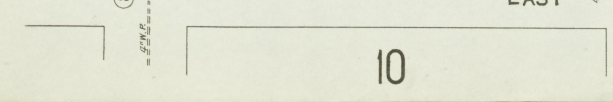
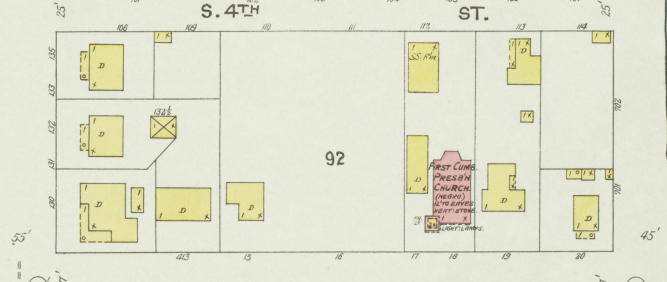
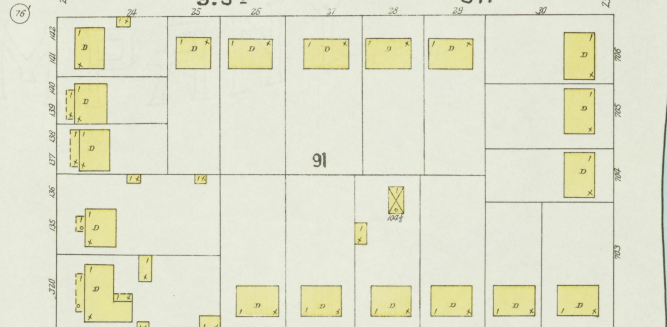
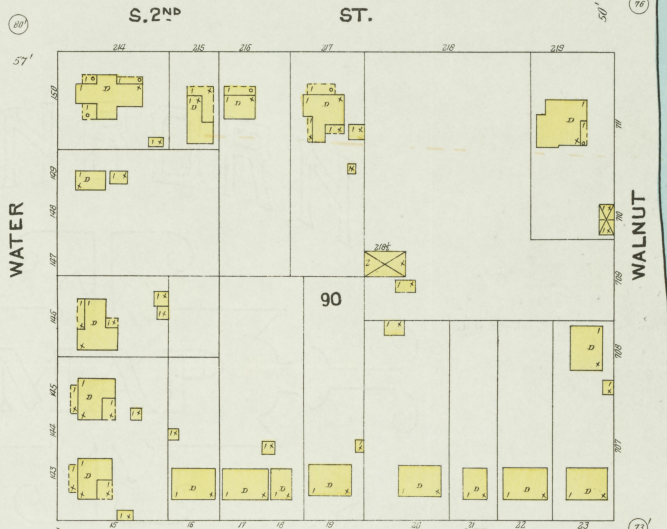
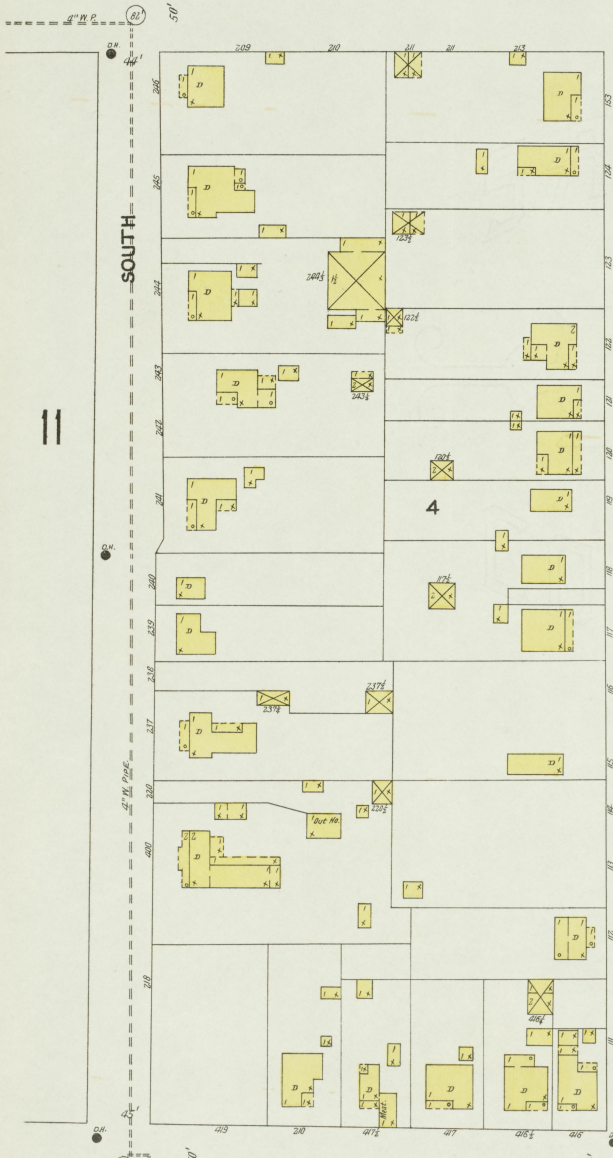
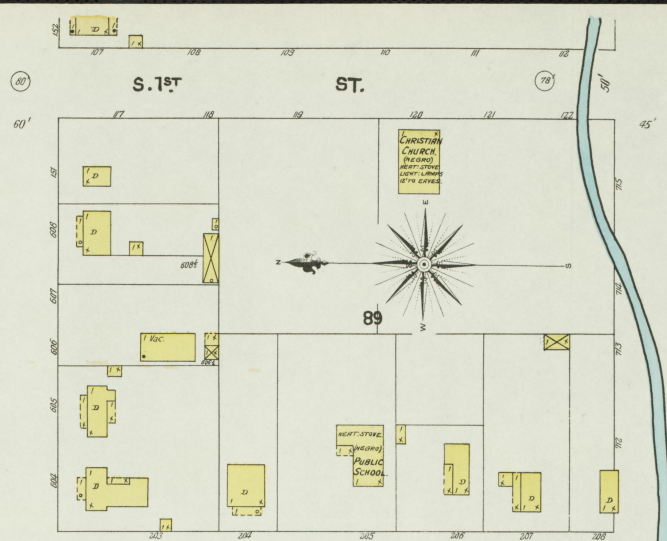
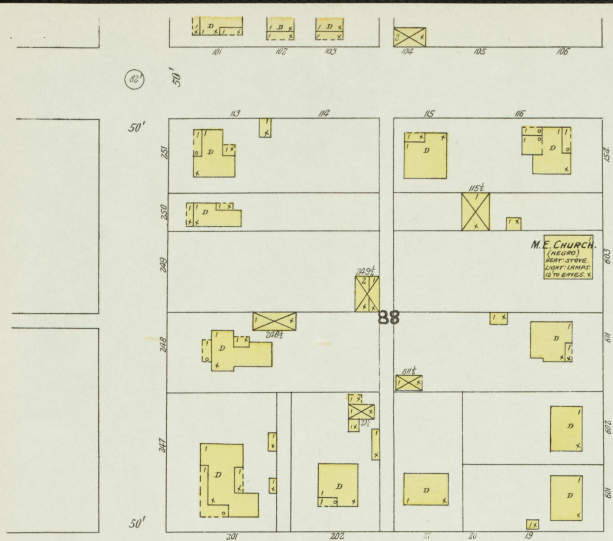


Map Printed
JULY 1905
L. H. PIERCE

Nov. 1905
MAYFIELD
KY.



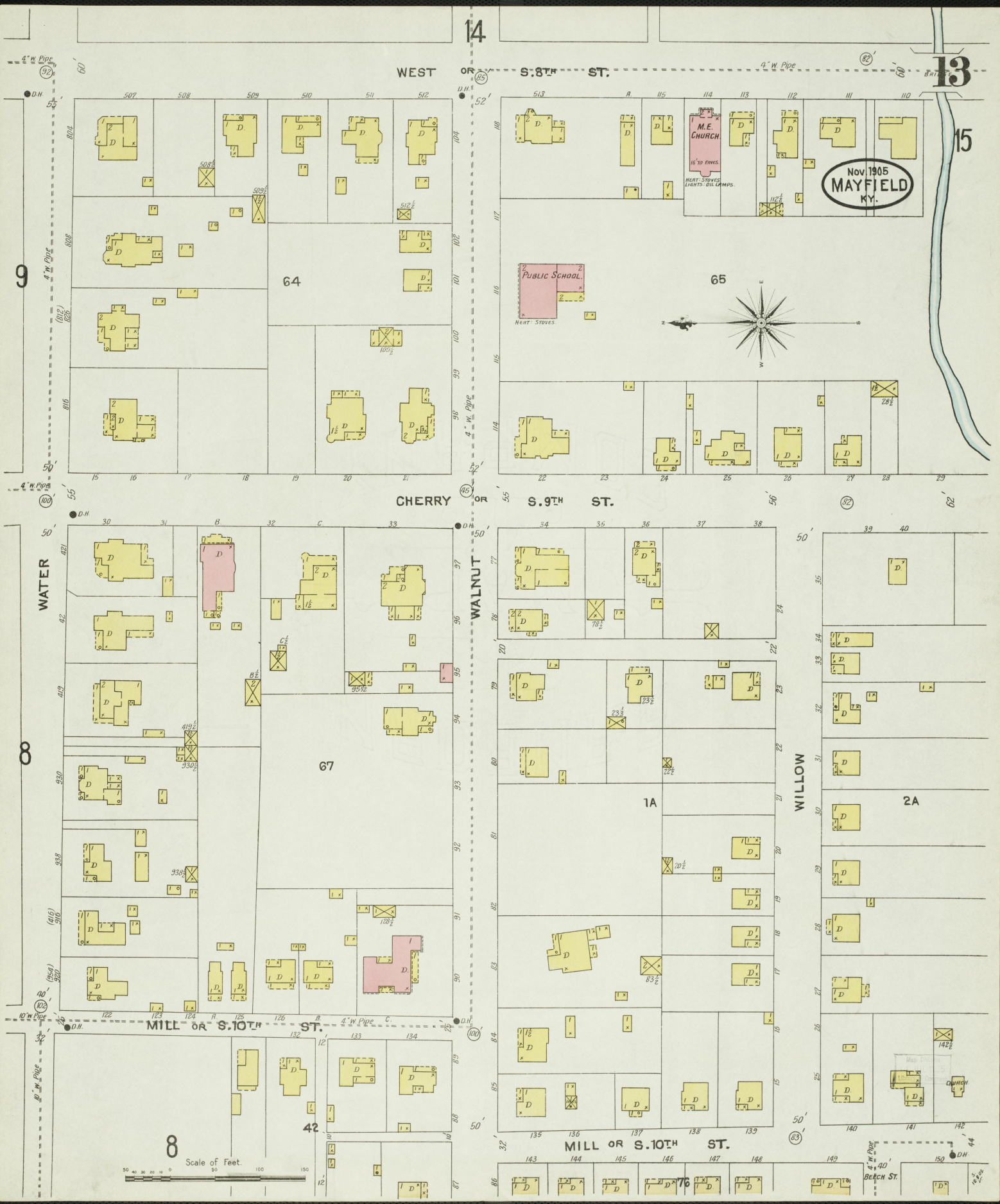
Nov. 1905
MAYFIELD
KY.

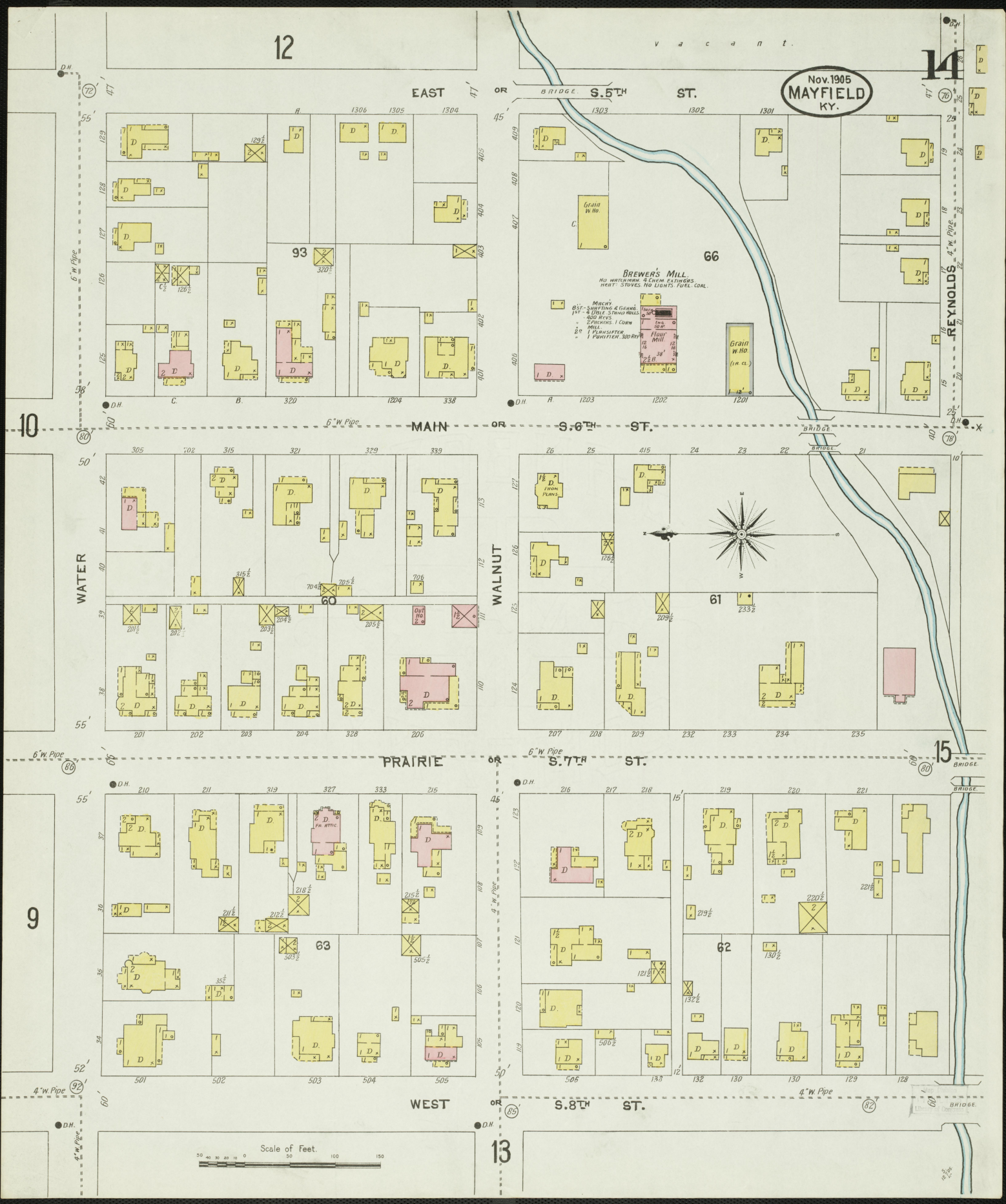


See Section 11, 12, 13
Library of Congress

BRIDGE

W





12

EAST

Nov. 1905
MAYFIELD
KY.

14

BRIDGE S. 5TH ST.

66

BREWERS MILL
NO WATERWORKS - 6 CUMM LATHINGS
HART STOVES NO LIGHTS FUEL COAL

MILLS
85' SHIPING & GEAR
137' & 138' SHIPING MILLS
400 RCYS
2 SPRINGS 1 CORN
MILL
20' FLOURSIFTER
1 PUMPIER 300 RCYS

REYNOLDS

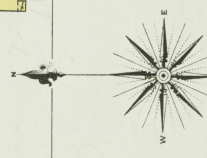
10

MAIN OR S. 6TH ST.

BRIDGE

WATER

WALNUT



61

9

PRAIRIE

S. 7TH ST.

15

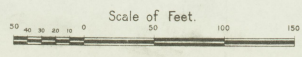
9

62

13

WEST

S. 8TH ST.



13

14

15

Nov. 1905
MAYFIELD
KY.

PRIMITIVE
BAPT. CHURCH

S. 8TH ST.

PRAIRIE OR S. 7TH ST.

MAIN OR S. 6TH ST.

OAK

62

61

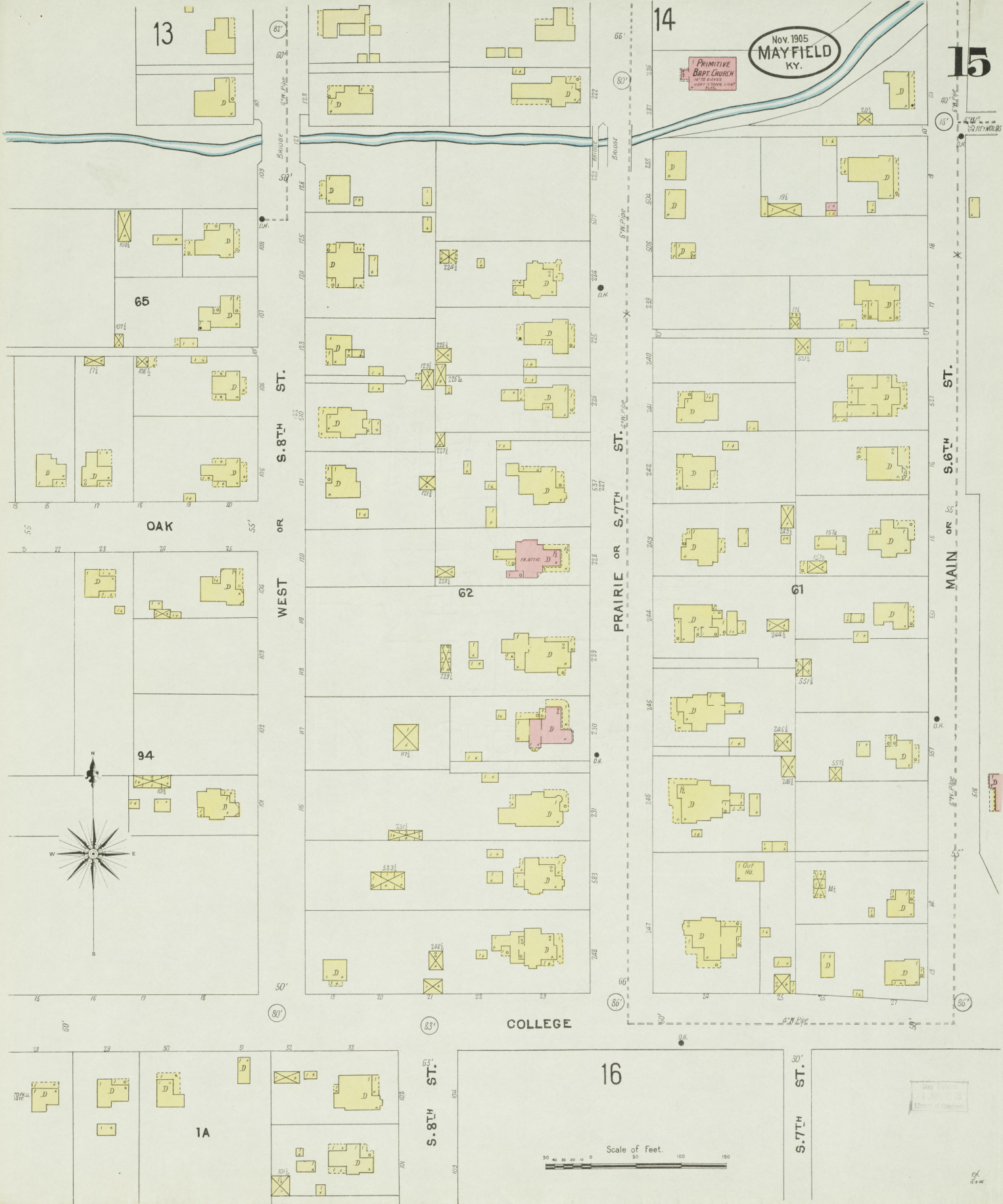
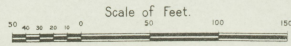
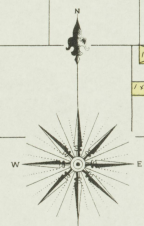
94

COLLEGE

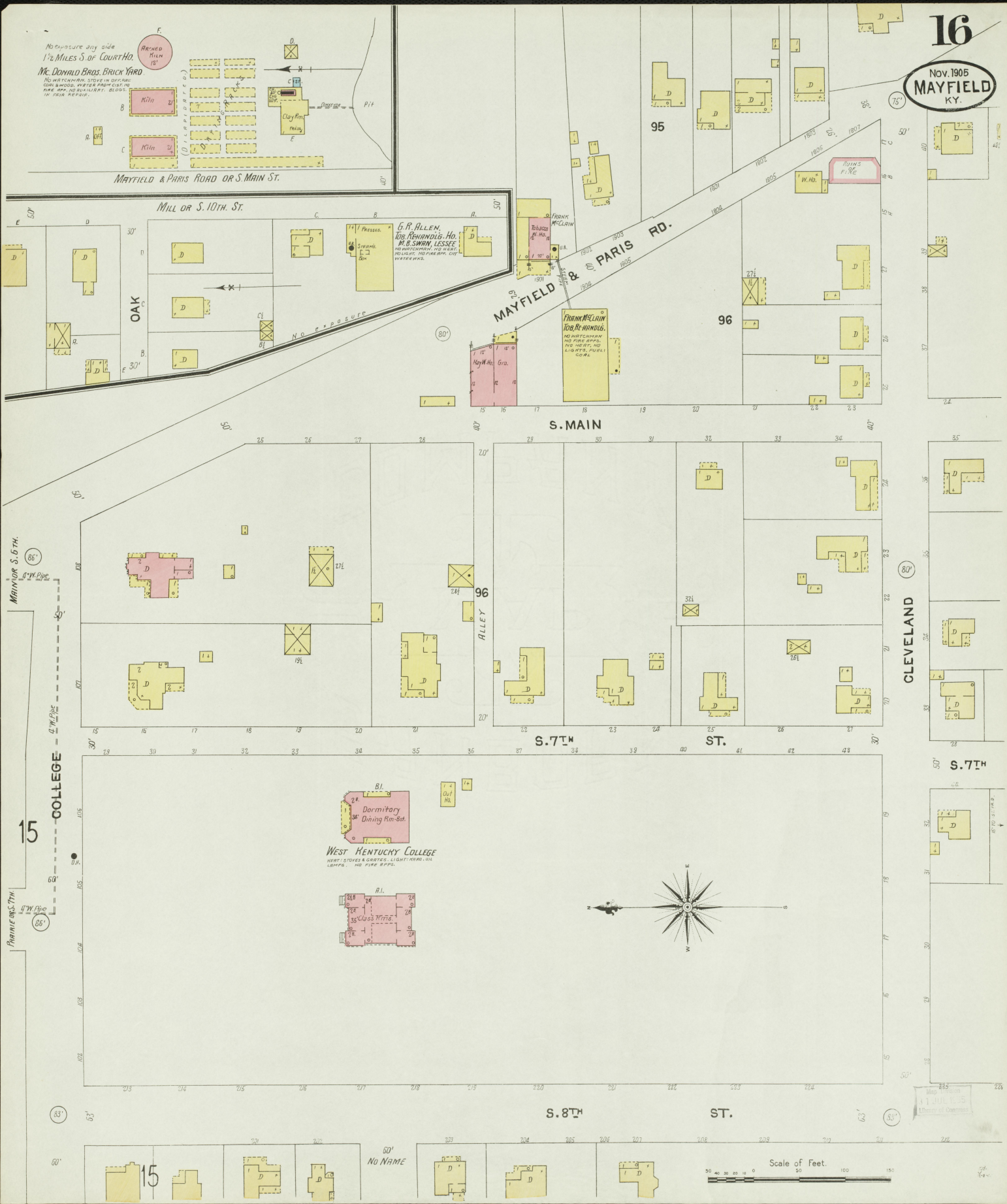
16

S. 8TH ST.

S. 7TH ST.



Measure any side
1/2 MILES S. of COURT HO.
Mc. DONALD BROS. BRICK YARD
NO WATCHMAN, STOVE IN OFFICE
COAL BUNKER, WATER PUMP, CISTERN
THE BRICK BUILDING, BLOSSOM
IN FAIR REPAIR.



MAYFIELD & PARIS ROAD OR S. MAIN ST.

MILL OR S. 10TH ST.

MAYFIELD & PARIS RD.

S. MAIN

S. 7TH ST.

ST.

CLEVELAND

S. 7TH

S. 8TH ST.

ST.

WEST KENTUCKY COLLEGE
HEAT, STOVES & CUPBDS. LIGHT, HEAT, GAS
LATHS. NO FIRE APPLS.

Dormitory
Dining Rm-Bst.

Class Rm

No NAME

Scale of Feet.

Map of Mayfield
11 JUL 1935
Division of Commerce