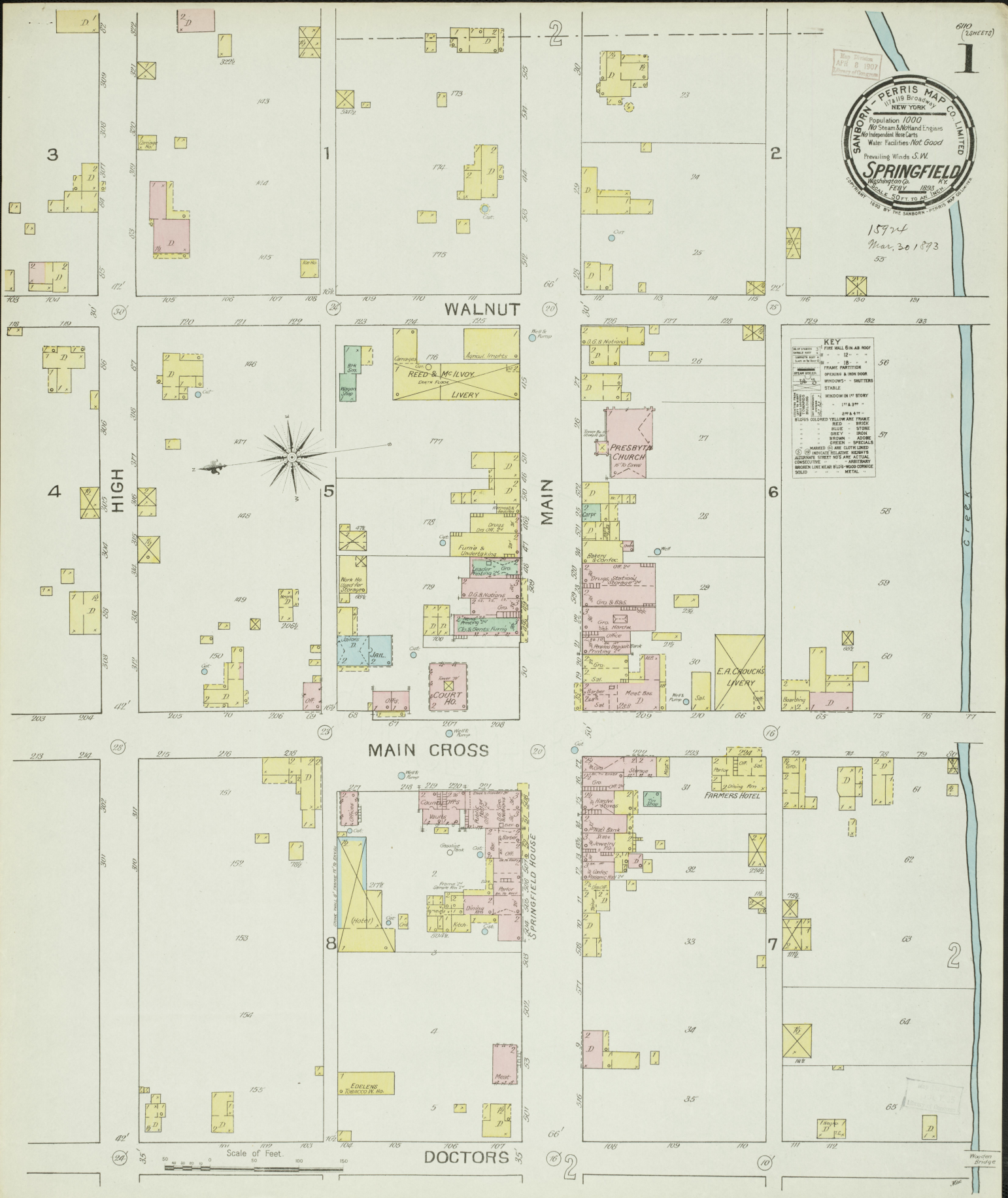


15924
Mar. 30 1893
53



KEY

- 1 FIRE WALL IN AS ROOF
- 2 - 12 - -
- 3 - 12 - -
- 4 - 12 - -
- 5 - 12 - -
- 6 - 12 - -
- 7 - 12 - -
- 8 - 12 - -
- 9 - 12 - -
- 10 - 12 - -
- 11 - 12 - -
- 12 - 12 - -
- 13 - 12 - -
- 14 - 12 - -
- 15 - 12 - -
- 16 - 12 - -
- 17 - 12 - -
- 18 - 12 - -
- 19 - 12 - -
- 20 - 12 - -
- 21 - 12 - -
- 22 - 12 - -
- 23 - 12 - -
- 24 - 12 - -
- 25 - 12 - -
- 26 - 12 - -
- 27 - 12 - -
- 28 - 12 - -
- 29 - 12 - -
- 30 - 12 - -
- 31 - 12 - -
- 32 - 12 - -
- 33 - 12 - -
- 34 - 12 - -
- 35 - 12 - -
- 36 - 12 - -
- 37 - 12 - -
- 38 - 12 - -
- 39 - 12 - -
- 40 - 12 - -
- 41 - 12 - -
- 42 - 12 - -
- 43 - 12 - -
- 44 - 12 - -
- 45 - 12 - -
- 46 - 12 - -
- 47 - 12 - -
- 48 - 12 - -
- 49 - 12 - -
- 50 - 12 - -
- 51 - 12 - -
- 52 - 12 - -
- 53 - 12 - -
- 54 - 12 - -
- 55 - 12 - -
- 56 - 12 - -
- 57 - 12 - -
- 58 - 12 - -
- 59 - 12 - -
- 60 - 12 - -
- 61 - 12 - -
- 62 - 12 - -
- 63 - 12 - -
- 64 - 12 - -
- 65 - 12 - -
- 66 - 12 - -
- 67 - 12 - -
- 68 - 12 - -
- 69 - 12 - -
- 70 - 12 - -
- 71 - 12 - -
- 72 - 12 - -
- 73 - 12 - -
- 74 - 12 - -
- 75 - 12 - -
- 76 - 12 - -
- 77 - 12 - -
- 78 - 12 - -
- 79 - 12 - -
- 80 - 12 - -
- 81 - 12 - -
- 82 - 12 - -
- 83 - 12 - -
- 84 - 12 - -
- 85 - 12 - -
- 86 - 12 - -
- 87 - 12 - -
- 88 - 12 - -
- 89 - 12 - -
- 90 - 12 - -
- 91 - 12 - -
- 92 - 12 - -
- 93 - 12 - -
- 94 - 12 - -
- 95 - 12 - -
- 96 - 12 - -
- 97 - 12 - -
- 98 - 12 - -
- 99 - 12 - -
- 100 - 12 - -

HIGH

MAIN

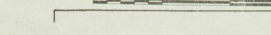
MAIN CROSS

DOCTORS

CREEK

Wooden Bridge

Scale of Feet.

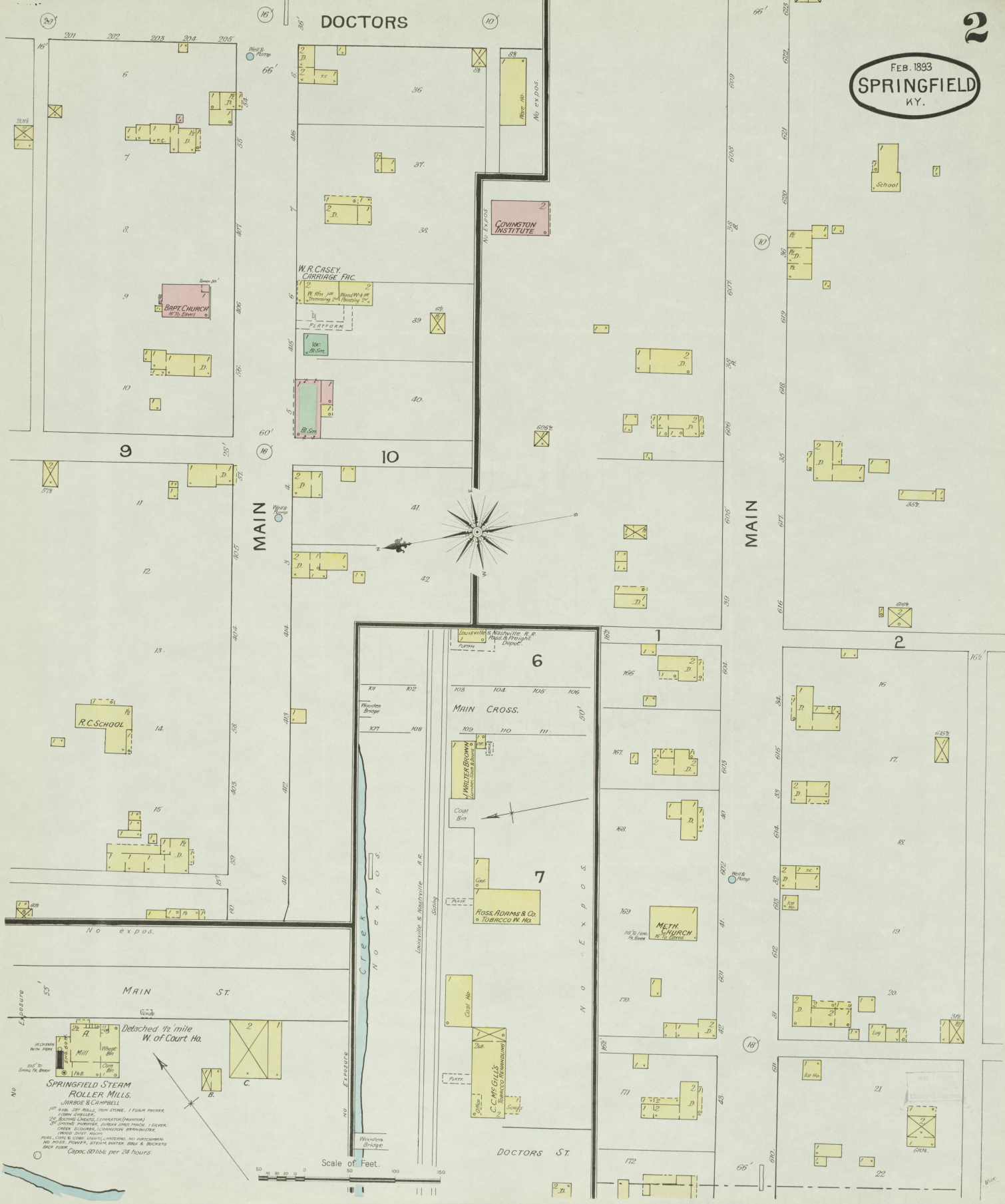
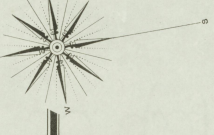


FEB. 1893
SPRINGFIELD
N.Y.

DOCTORS

MAIN

MAIN



Detached $\frac{1}{2}$ mile W. of Court Ho.

SPRINGFIELD STEAM ROLLER MILLS.
 VERRILL & CHAPPELL
 1ST FLOOR: 125 TONNAGE, NEW STONE, 1 FLOUR PULLER,
 1 CORN SHRELLER, 1 CORN CRACKER (MACHINE),
 1/2 BUCKING MACHINES, CONVEYOR (MACHINE),
 2000 GALLON PUMPER, OVERHA SHEET PRESS, 1 SLEWER,
 CRACK SCOURING, CONVEYOR APPROPRIATE,
 2000 GALLON PUMPER,
 BRICK SHED 200' LONG
 PAUL, COKE & SOON LIGHT, UNCLE TOM'S HAYSTACK,
 NO WOOD PUMPER, STEAM PUMPER SHED & BUCKETS
 BRICK FLOOR
 Capacity 800000 lbs. per 24 hours.

