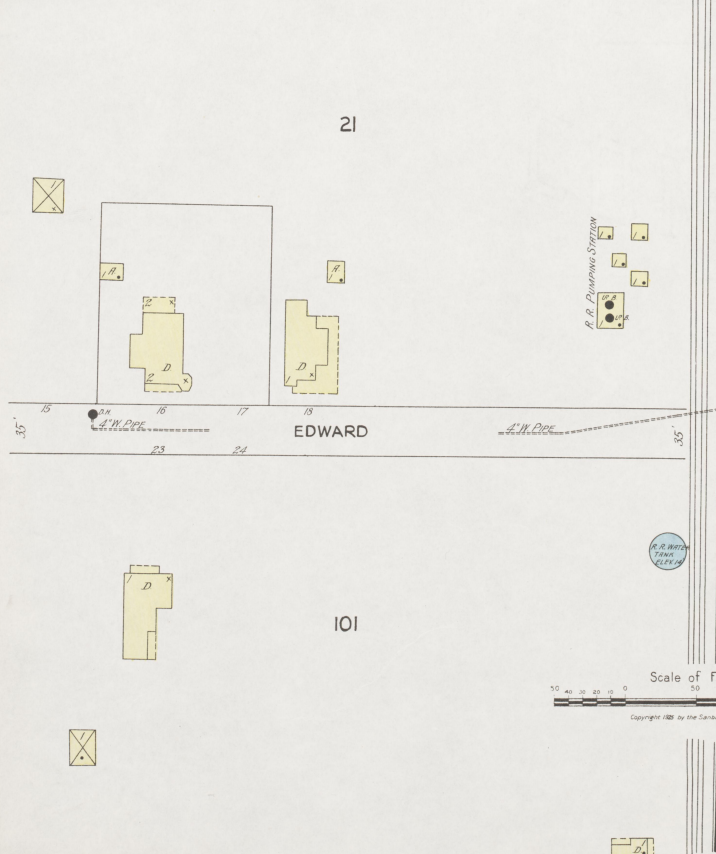


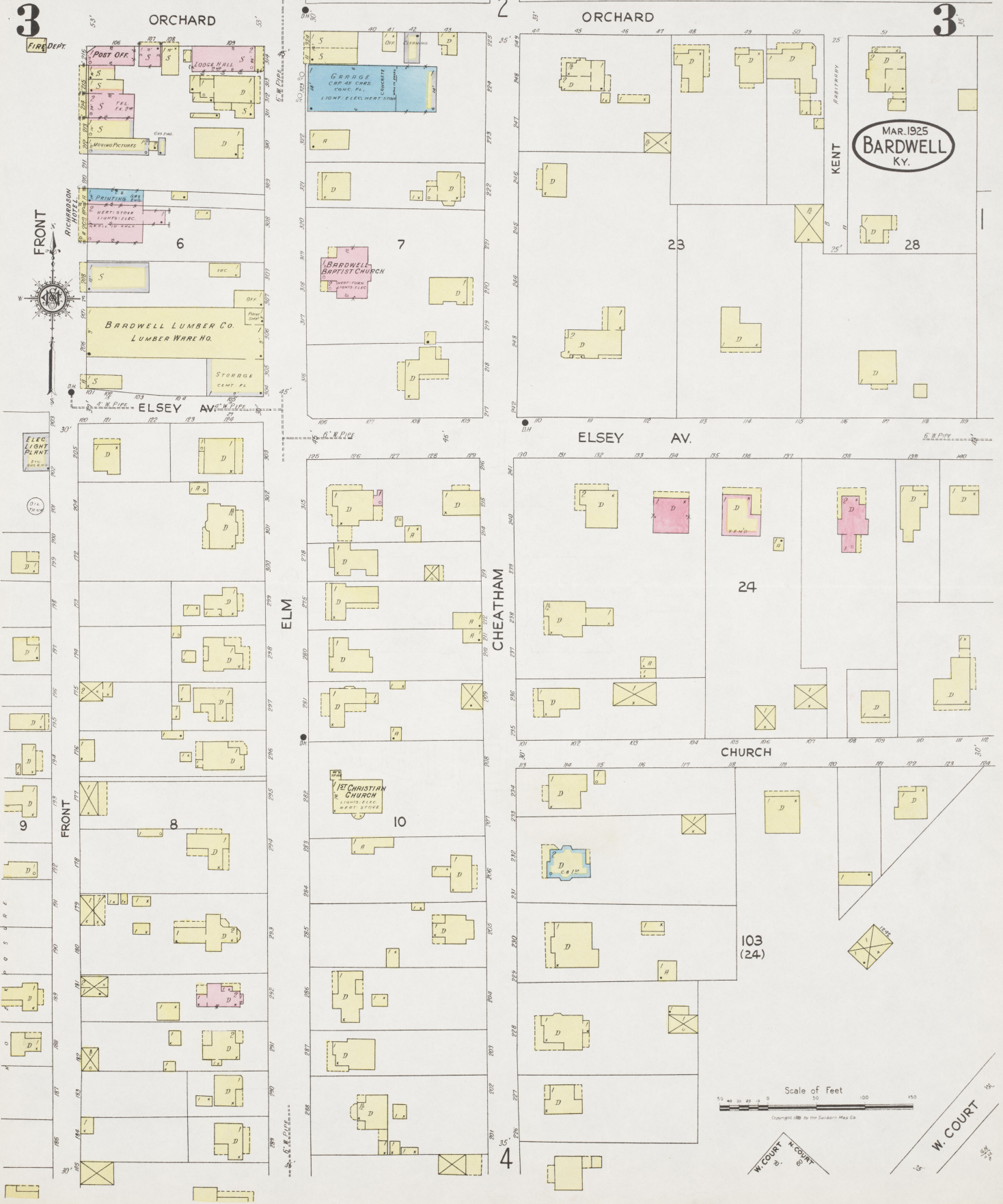
WATER FACILITIES: 30 F 11161
 Water Works owned by Lamb Utilities Co. Water pumped from creek well by Cook deep well pumps; size and capacity unknown; 76 mains, distribution system to stand pipe, capacity 3000 gallons elevated 160 above business section. Direct pressure & gravity system. Gravity & pump pressures 80 lbs. & 100 lbs. Pipes are respectively two miles of 4" & 6" mains, 1/4 double hydr. Average daily consumption 40,000 gallons.
 One Cook pump
 One Ames duplex pump
 Size 12" x 12" x 20"
 Capacity 500 gals per min
 Horsepower - Capacity 200,000 gals. Not in use

FIRE DEPT.
 Not organized 2 hose reels, 1000-25' hose. Alarm given by whistle on Harlan-Lowe Flour Mill.
 Grades level - No paved streets - Public lights: Elec. No fire hydr.

INDEX

SPECIALS	INDEX	INDEX
Auditorium, Tho.	H Harlan-Lowe Milling Co. 1
Bachwell Baptist Church	I I. C. R. R. Passengers & Freight Depots 2
Lumber Co. Warehouse	P Pumping Station, 1
Methodist Church	Illinois Oil Co. 2
C County Court House and Jail	L Lamb Utilities Co., Pumping Station, 4
Cowles Canning Co., Canning Factory	P Post Office, 3
E Ellison & Frank, Saw Mill	R Richardson Hotel, 3
F Fire Department	S Second Christian Church, 2
Fisher, R., Cotton Gin	





3

ORCHARD

2

ORCHARD

3

FIRE DEPT

Post Off.
 Lodge Hall
 Printing Shop
 Bardwell Lumber Co. Lumber Ware Ho.
 Storage Cent. Fl.

Garage
 Bardwell Baptist Church
 First Christian Church

MAR. 1925
 BARDWELL
 KY.

FRONT

ELEC. LIGHT PLANT

9

FRONT

8

ELM

10

CHEATAM

ELSEY AV.

AV.

24

CHURCH

103 (24)

4

Scale of Feet
 0 50 100 150

W. COURT
 N. COURT

W. COURT

MAR 1925
BARDWELL
KY.



Scale of Feet.
0 10 20 30 40 50 100 150
Copyright 1925 by the Sanborn Map Co.