

# Matrix means 'change'

## Local drug treatment house combines change with concern

By JERRY W. LEWIS  
Associate Editor

The journalist is often accused of letting his emotions interfere with his writing, of slanting his writing to his particular opinion. After living, working and experiencing with the people of Matrix, there is no possible way emotion cannot be a part of these stories, that rigid news style can edit out feelings. To the reader, understand that much of this series is my own individual feelings, to the people of Matrix, the game is on.

**EDITOR'S NOTE:** This is the first in a four-part series of articles written about Matrix House, a treatment modality used by the Federal Government for the rehabilitation and re-education of drug-dependent individuals. It is located on the grounds of the National Institute of Mental Health, Clinical Research Center in Lexington. The writer spent a weekend and several evenings listening to and learning from the members of Matrix for this series.

Only orange pumpkins, unripe watermelons, a few green peppers and weeds remain in the large garden just outside the institutional red brick building of Matrix. Matrix House itself sits off alone staring out over several acres of government property towards Leestown Pike in Lexington. Several hundred yards to the left of Matrix lie the other buildings of the Clinical Research Center, a drug rehabilitation and research center sponsored by the U.S. Public Health Service.

Soon, as fall begins to change the color of the leaves of the surrounding trees, the



Meal time is one part of the day at Matrix House when the members can relax from the busy schedule of the day. Even at the meals, however, members are encouraged to discuss things they are doing or have learned during the day. In this way, members help each other as individuals adjust to the Matrix lifestyle. (Staff photo by Jerry W. Lewis)

pumpkins and watermelons in the garden will be picked. Although the weeds will completely take over the garden, the ground will be tilled in the Spring. Seeds will be planted and the green leaves of vegetables will offset the rainbow of colors that will appear as the garden grows.

It will be only one change in the environment of Matrix—only a fraction of a life-style that is change.

For Marshall, a newcomer at Matrix of four days who once lived on a farm and now delights at just digging up the old tomato stakes in the garden, the changes will be as radical as the blooming plants.

The change will be just as intense for Pete, his shaven head a mark of changes that have already taken place.

Or Lyn, a college psychology major who put off school to live 18 months at Matrix. No one knows what she will think

of textbooks when she leaves, if she does. The name of Matrix itself implies the philosophy of change that is lived each day at the House. Defined from a dictionary, the word Matrix is "something within which something else originates or develops." Explained by someone who lives in Matrix, it becomes a much more personal definition.

For all of the people who live at Matrix, their philosophy of change becomes their new life style. For most of them, the change must be extreme because their pasts reflect extremes.

### Former 'dope fiends'

In their own words the people at matrix have been "dope fiends", many addicted to hard narcotics. There are exceptions. Some who found themselves taking more and more hallucinogenic drugs with their friends came to Matrix before they developed a physical habit for narcotics. Most of them considered it "only a matter time" before that would have happened.

Continued on Page 5, Col. 1

# The Kentucky Kernel

an independent newspaper published by students at the university of kentucky

Monday, Oct. 25, 1971

LEXINGTON, KENTUCKY 40506

Vol. LXIII, No. 38

## Mite is subject of study

# UK lab seeks natural pest control

By RALPH C. LONG  
Kernel Staff Writer

Natural means of fighting insect pests that attack man are being developed in the UK Acarology Laboratory.

Mites are small eight-legged animals closely related to both insects and spiders. The mite may be no longer than one millimeter, but it is harmful to several of man's food sources.

### Three types

According to Dr. J. G. Rodriguez of the Acarology Lab there are three categories of mites:

▶ "Free living mites" are scavengers important in decomposing organic matter such as falling leaves during the autumn.

▶ "Predatory mites" live by attacking insects and other small animals including other mites.

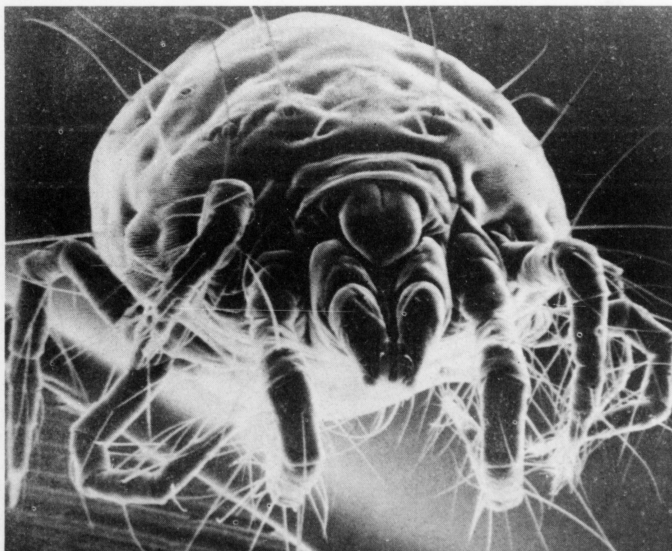
▶ "Parasitic mites" live on many animals, both

warm and cold blooded, including domestic farm animals, pets and even other insects.

Rodriguez said mite control entails "short circuiting the nutrition of the harmful species or building-up populations of predatory mites."

Rodriguez explained predator mites are useful in pest management. He said farmers can use mites to "supplement the use of selective insecticides" to control other mites and insects.

Continued on Page 5, Col. 1



## It mite be catching

This mite, magnified 1,000 times and photographed by a new \$70,000 scanning electron microscope at the UK Experiment Station Farm, is one of the subjects of a study aiming at finding natural means for pest control.

## Mock election canceled

The Student Government gubernatorial mock election, originally scheduled for today, has been cancelled.

According to SG administrative assistant Tim Guilfoile, the problem was getting enough poll workers. "There were supposed to be four polling places," Guilfoile said. "We thought we had enough SG workers, but when we called a meeting last night only five showed up."

Guilfoile said the alternatives he presented to the College Republicans and Young Democrats last night were running a single polling place having one Young Democrat and one College Republican at each polling place, or cancelling the election.

"I wasn't going along with one polling place," said Nick Nicholson, Chairman of UK Democratic campaign committee. "It would have been a mockery."

"Of course, I doubt there was enough interest to have a real good mock election, if we couldn't even get poll workers."

"We're still willing to have an election," said Phil Dunnagan, second vice president of Young Kentuckians for Emberton. "I think Young Democrats are using this as an excuse to get out of having an election."

"I would rather have the first choice (one polling place)," Dunnagan said. "I'm afraid if both parties worked at the polling place whoever lost would claim fraud."

# Baha'i sponsors dialogue on racism

By **KEITH BRUBAKER**  
Kernel Staff Writer  
You have "the small-town kid who gets in a room with a black

dude from Louisville, and I think he does change. People do come out more liberal when they get together with people of other races."

Speaking was a black UK student at the Dialogue on Racism Friday night in the Student Center. Sponsored by UK Baha'i Association, the YWCA and other campus groups in connection with United Nations Day, the dialogue began with bowed heads and solemn words asking for unity.

Most who participated in the dialogue agreed "racism is not something just between the races, but something which comes between many other groups in society."

Ms. Anna Bruflat, chairman of

UK Baha'is, said "People are afraid to act outside of their own groups. How many students, for instance, are aware of the foreign students on campus, and the wonderful opportunity this could bring in broadening one's knowledge?"

**Students separate**  
Another student said, "When students get mixed together they separate into their own groups. Nothing happens to them outside that group."

A white student strongly criticized the administration for cutting funds to the Black Student Union. This drew a response from a black student who said "The University has done a very good job of stamping on black people by giving them that money in the

first place." She accused the administration of having a "you go do your own thing" attitude—"We'll pay you to leave us alone."

The dialogue then turned to "White liberals who want to help blacks without getting too dirty." A white student said "I'm probably a specimen of what you're talking about."

He went on to say "White liberals have been frightened by the culture of the ghetto. It is illogical to expect someone in a better position to change places with you. When you don't

protect yourself you could end up in the same position as the man you're trying to help."

**How to keep out of mud?**  
A black student agreed with this but said "I don't know how to keep the mud from spraying." Ms. Bruflat told the group it was time for them to "start pointing out racism" when they see it, to tell those involved in it "Stop! You're wrong."

She cited her own actions as examples of failure in this, and reminded the group of the YWCA theme for 1971: "To eliminate racism wherever it is and by any means necessary."

**STEREO**  
AM-FM stereo, stereo changer, and jacks for tape cartridge, \$89.95 each. AF on AM-FM stereo receivers, with built-in 8 track, \$89.95 each. Also, available BSR Slash McDonald changers and Webcore air suspension speakers.  
**United Freight Sales**  
2123 Oxford Circle

**Be an early bird!**

Cliff's Notes are great any time you need help in literature! We recommend buying early so that you can use them as you study the assigned play or novel and as a helpful review prior to exams. Get the Cliff's Notes you need today. You'll see why they're the preferred study aid of millions of students nationwide. (P.S. If your dealer's out of a title, he can get another fast with Cliff's "Hot Line".

**Cliff's Notes**  
Nearly 200 titles—always available wherever books are sold.  
Only \$1 each  
Here!  
**Wallace's**  
385  
South Limestone  
Lexington, Ky.

CN-71-4

## We goofed

The Kernel incorrectly reported that the mock gubernatorial election will be sponsored by the Young Democrats. Student Government will sponsor this event.

\*\*\*

The Kernel incorrectly stated the dates for the SC Bergman

film, "The Magician." The movie will be shown Monday and Tuesday at 6:30 p.m. and 9:15 p.m.

\*\*\*

The name of Constance Wilson was inadvertently omitted from the list of appointees to the search Committee for a new dean of Arts and Sciences.

## BIRTH and BIRTH CONTROL FILMS

PLUS DOCTORS TO ANSWER QUESTIONS!

TUESDAY DR. BEVERLY SMITH WEDNESDAY DR. JOHN DUHRING

Films will be shown Tuesday, Oct. 26 and Wednesday, Oct. 27 from 7-9 p.m. in Room 118, CB Building

Sponsored by AED—Pre-Med Honorary

## ANNOUNCEMENT!

# Society of the Sigma Xi

October Meeting  
Public Invited

**SPEAKER:**

**DR. JOHN SCARBOROUGH, Associate Professor, University of Kentucky Department of History**

**TOPIC:**

**"What The Romans Thought of Technology"**

**TIME:**

**7:00 p.m. — October 27, 1971**

**PLACE:**

**Room 110 White Hall (Classroom Building)**

Refreshments will be served at 7:00 p.m. A short business meeting to be held at 7:30 p.m. will precede Dr. Scarborough's lecture at approximately 7:45 p.m. The public is cordially invited.

## The Pertwillaby Papers

by Don Rosa and Ron Weinberg

**EPISODE 32: DR. A MENDOUS COLLEGE PRESIDENT HAS JUST EXPLAINED WHY V.D. SMYTHE CANNOT SEE THE SCHOOL FILES**

OH DRAT! WELL, I MISSED TEXACO STAR THEATER... BUT TWENTY-ONE IS STILL ON — THAT CHARLIE VAN DURAN CAN SURE SWEAT!

PERHAPS I'LL SEE YOU NEXT MONTH IF THE VAULT WILL. OFTEN, PROF. SMYTHE. AS DAVE GARROWAY SAYS: PEACE.

WELL, WHEN WILL WE BE RID OF PERTWILLABY NOW THAT HE HAS BEEN EXPOSED?

IT'S A LONG STORY BUT YE KOULDNT NOT GET INTO DER FILES... FOR NOW, MEIN FRIEND, YE MUST MAKE OTHER PLANS.

**NEXT EPISODE: THE REGION LANCELOT P.**

## Today and Tomorrow

The deadline for announcements is 7:30 p.m. two weekdays prior to the first publication of items in this column.

**TODAY**  
**CAMPUS FRIENDS OF PCCA** meeting 8 p.m. Monday, Oct. 25, Room 309, Student Center.

**MOCK ELECTION** sponsored by the UK Young Democrats and UK College Republicans between gubernatorial candidates Tom Emberton and Wendell Ford. Polls will be open 9 a.m. to 6:30 p.m. Monday, Oct. 25, Student Center first floor, Commerce Building

Lobby, Complex Cafeteria and Classroom Building first floor.

**PHYSICS COLLOQUIUM** featuring Dr. R.J. Hoch, Director-Aeronomy and Space Sciences, Battelle-Pacific Northwest Laboratories, 4 p.m. Monday, Oct. 25, Room 153, Chemistry-Physics Building.

**BLUE GRASS GROUP OF THE SIERRA CLUB** meeting 7:30 p.m. Monday, Oct. 25, Central Baptist Church, 1644 Nicholasville Rd.

**PROBLEM PREGNANCY AND ABORTION COUNSELING**, Women's Center. Call: 252-9358 from 7 p.m. to 9 p.m. Monday through Wednesday, and 2 p.m. to 5 p.m. on Sunday. If emergency during other hours call Patti or Laurie at 253-2284.

**TOP VALUE STAMPS** needed by the end of October for a raffle to raise funds for the North End Community Center Volunteer Recreation Program. Contact Dan Gossett at 254-0791 or John Rotter at 233-1883.

**TOMORROW**

**LEXINGTON ASSOCIATION FOR PARENT EDUCATION** sponsors a series of five evening classes for the Lamaze method of childbirth preparation, 8 p.m. Tuesday, Oct. 26, Good Samaritan Hospital; 8 p.m. Wednesday, Oct. 27, UK Medical Center; 8 p.m. Thursday Oct. 28, St. Joseph's Hospital. These are beginning classes. For information contact Ms. Donna Rogers at 259-5000.

**UK AMATEUR RADIO CLUB** meeting 6:30 p.m. Tuesday, Oct. 26, Room 453 F, Anderson Hall. Election of officers.

**PRE-LAW PANEL DISCUSSION** 7:30 Tuesday, Oct. 26, Law Courtroom.

**COMING UP**

**ENVIRONMENTAL AWARENESS SOCIETY** open meeting 7:30 p.m. Wednesday, Oct. 27, Room 245, Student Center. Guest speaker will be Walter Strange, state government.

**UK STUDENT PRODUCTION** for the 1971-72 season, "The Birthday Party" opens 8:30 p.m. Wednesday, Oct. 27, Fine Arts Building Laboratory Theatre. Admission: non-students \$2; student \$1 and for groups of ten or more \$1.

**FRIENDS OF THE LEXINGTON PUBLIC LIBRARY** presents Mr. and Ms. Bill Cohen in a multi-media program on Appalachia 7:30 p.m. Wednesday, Oct. 27, Gallery of the Library.

**ETA KAPPA NU**, electrical engineering honorary, sponsors a film series every Wednesday at noon in Room 255, Anderson Hall.

Drugs—DRUGS—Drugs  
SG Drug Center—  
253 Limestone  
Health Service—  
233-5823  
Christ Center—  
231 W. Maxwell

## The Kentucky Kernel

The Kentucky Kernel, University Station, University of Kentucky, Lexington, Kentucky 40506. Second class postage paid at Lexington, Kentucky. Mailed five times weekly during the school year except holidays and exam periods, and once during the summer session.

Published by the Board of Student Publications, UK Post Office Box 4986. Began as the Cadet in 1894 and published continuously as the Kernel since 1915.

Advertising published herein is intended to help the reader buy. Any false or misleading advertising should be reported to The Editors.

**SCRIPTION RATES**  
Yearly, by mail — \$10.50  
Per copy, from files — \$10

**KERNEL TELEPHONE**  
Editor, Managing Editor... 257-1755  
Editorial Page Editor  
Associate Editors, Sports... 257-1740  
Advertising, Business, Circulation... 258-4646



**shillito's** FAYETTE MALL

**\$100,000 record and tape sale!**

**TODAY THRU WEDNESDAY ONLY**  
**FAYETTE MALL GARDEN SHOP**  
**REYNOLDS ROAD ENTRANCE**

See Jim Dunaway, WV LK disc jockey . . . Tonight from 7 to 8 p.m.

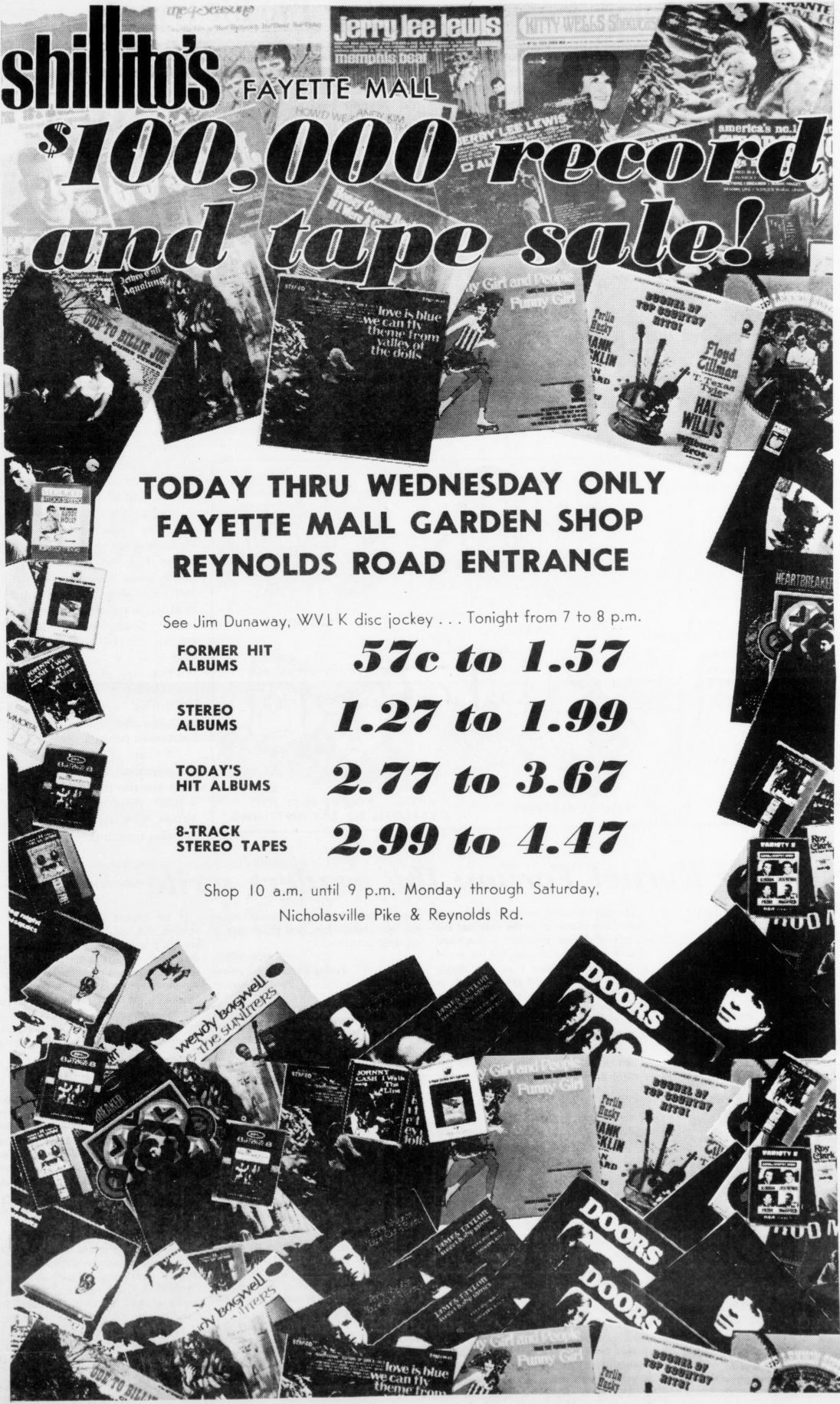
**FORMER HIT ALBUMS** **57c to 1.57**

**STEREO ALBUMS** **1.27 to 1.99**

**TODAY'S HIT ALBUMS** **2.77 to 3.67**

**8-TRACK STEREO TAPES** **2.99 to 4.47**

Shop 10 a.m. until 9 p.m. Monday through Saturday,  
 Nicholasville Pike & Reynolds Rd.



nd the  
 ith  
 ow  
 g."  
 o it  
 art  
 hey  
 n it  
 as  
 nd  
 the  
 To  
 is  
 and  
 ring  
 my  
 ffic  
 .m.  
 53.  
 HE  
 .m.  
 tist  
 ND  
 G.  
 358  
 day  
 o 5  
 ring  
 at  
 by  
 to  
 End  
 fer  
 Dan  
 tter  
 ON  
 ON  
 ing  
 of  
 .m.  
 itan  
 27,  
 day  
 use  
 For  
 nna  
 UB  
 26,  
 fall.  
 ION  
 Law  
 A L  
 open  
 Oct.  
 ster.  
 nge.  
 for  
 day  
 day,  
 ding  
 ion:  
 l for  
 TON  
 and  
 media  
 p.m.  
 f the  
 trical  
 film  
 n in  
 el  
 rsity  
 Lec-  
 class  
 icky.  
 the  
 exam  
 inner  
 dent  
 gine  
 and  
 rnel  
 in-  
 Any  
 ould  
 -1755  
 -1740  
 -4646

# Democracy in action:

## Mr. Agnew props up another two-bit tyrant

President Nixon's trusty globetrotter and official mouthpiece, Spiro Agnew, has done it again.

This time Mr. Agnew wound up an official visit to his fatherland, Greece, with a gush of praise and support for the one-man

government of Premier George Papadopoulos.

"I depart your country with a sense of accomplishment and personal fulfillment," Agnew told the premier in Athens. "And I leave with renewed respect for the efforts of the government of Greece in

carrying out its country's role as a member of NATO." Diplomatic sources said Agnew's remarks went far beyond past support of the Greek regime.

It figures. It is useless to rant again about Mr. Agnew's bear-hugging of yet another cheap dictatorship. He has done it so often before—in Ethiopia and South Korea, for instance—that his actions and the tacit support of Mr. Nixon are now old hat.

Instead, let us look at some facts about the type of government our vice president so unreservedly commits his nation's support to.

Greece is a nation which has been promising democratic elections since a military coup ousted a left-leaning government in 1967. Those elections have yet to be held.

Instead, Greece is now a nation

in which an estimated 90 percent of all registered voters oppose their government. It is a nation where some 50,000 state spies keep tabs on the activities of the citizens. The premier drives to his palace in a bulletproof limousine along a route sealed off by 300 armed policemen.

And Greece is a nation where journalists are gagged by a rubber-stamped "code of ethics" which metes out severe punishment for publication of "anti-Christian" or anti-Greek news.

It is a place where hundreds of political prisoners languish on offshore islands, awaiting a release that may never come. It is a nation where the premier has assured his continued reign by demoting all possible rivals to innocuous cabinet posts and setting himself up as a tyrant. Martial law is the rule. Says Papadopoulos: "I am the captain of this ship. And I will decide when the ship puts into port."

And what does this mean to the United States? Simply this: Greece is also a key to U.S. and NATO military operations in the Mediterranean. Greece is a nation where U.S. businesses hold large investments, including a recent \$60 million loan to the dictator Papadopoulos' treasury. And it is a nation which will receive \$70 million in U.S. military aid this year.

Those are all the facts—except one. Greece is also another in an unending string of ruthless tyrannies shored up by our nation for its own personal gain.

"We are friendly with many dictatorships that contribute to what the Pentagon sees as our world mission," laments *The Nation*. We sadly agree, and we are ashamed for our government.

## The Kentucky Kernel

ESTABLISHED 1894 UNIVERSITY OF KENTUCKY LEXINGTON, KY.

Editorials represent the opinions of the Editors, not of the University.

Mike Wines, Editor-in-Chief

Jane Brown, Managing Editor  
David A. King, Business Manager  
Janice Francis, Greg Hartmann, Rachel Kamuf, Lincoln R. Lewis Jr., Dale Matthews, and Wendy Wright, Assistant Managing Editors  
Mike Tierney, Sports Editor Don Rosa, Cartoonist Rona Roberts, Arts Editor

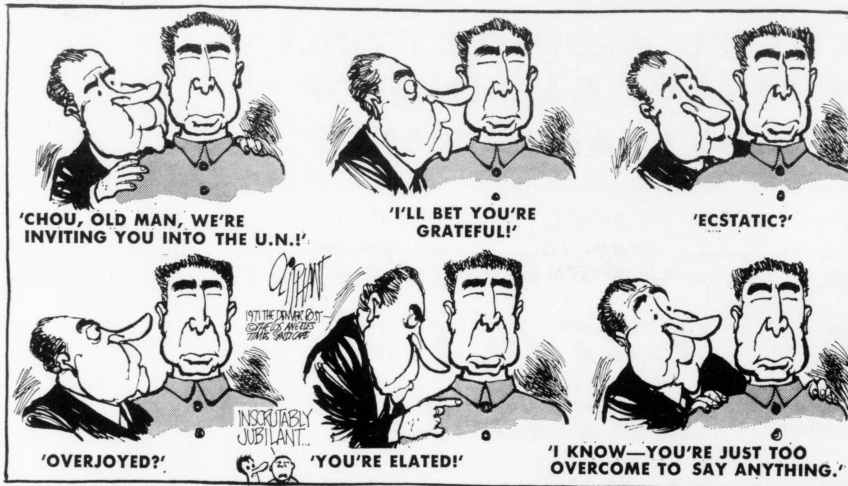
Jerry Lewis, Associate Editor

John Gray, Editorial Page Editor

Lincoln R. Lewis Jr.,

Assistant Managing Editors

Rona Roberts, Arts Editor



## Kernel Forum: the readers write

### Open visitation policy

The attempts by a large number of students to change the open visitation policy of the University of Kentucky to a more logical one have been constantly cast aside by the administration. Could it be that the administration has a new plan for open visitation of their own? With a little imagination one could easily visualize what it would be like.



Pierotti in the New York Post

"—and they're going to do everything they can to help the Cambodian government"

The girl intending to visit a friend in a male dorm checks in at the desk and the female attendant gives her a numbered chasity belt with lock and key for her to put on. After putting it on in a neatly provided room the girl gives the key to the attendant and is free to visit her friend for as long as she wants. When she is ready to leave she returns to the desk, gets the key, takes off her chasity belt and leaves. Very simple and safe!

Lets hope that we can move into the present by joining schools like Michigan, Centre, Indiana University and countless others by adopting a sensible open visitation policy that is free of needless regulations, that is logical, and set by the students that live in the dorms instead of going back into the Middle Ages.

William Shanks  
Junior  
History

### Young world development

Young World Development would like to thank you for coming out and doing an article about our bicycle ride on Oct. 9, 1971.

We feel that the bicycle ride was a success and will go a long way in arousing public concern for bicyclists and will help create a favorable opinion in regard to the establishment of bicycle paths and/or bicycle routes marked by signs in the city of Lexington. We hope that you and

many other University students would join our organization, and participate in our other activities.

Mike Wilson  
Young World Development  
Public Relations

### The health insurance

What bill of goods is the University of Kentucky trying to sell us now? Recently I received a notice from the Student Health Service telling me that if I did not pay for my student health insurance, my name would be turned in to the registrar as delinquent in fee payments.

It doesn't matter whether or not I want their insurance, or that I've never heard of any waiver it was necessary to sign in order not to be sold the insurance. Although I protest being sold something without my consent, and I would gladly sign a waiver, it seems that the deadline for signing has past.

From reading the article "Pay The Health Fee or Else!" by Peter Stauffer in the Wednesday Kernel, it appears as if I am not alone in my feelings. Supposedly almost one thousand students are to be turned in as delinquent.

Granted, I understand that there are certain necessary educational costs which should be included in our tuition. If as a student you feel that the way this insurance policy was sold to you is unfair, then I would let it be known.

If we cannot get the University to remove this unfair assessment from our records I propose that in the near future everybody who feels nauseated by this form of socialized medicine should report to the Student Health Service for a "Sick-in". At least we would get our moneys worth.

Norman Gorback D.D.S.  
Graduate Student, Orthodontics

### Abortion: a non issue

The question of the morality of abortion has long since passed away as a relevant issue. Only a few people on some Quixotic adventure will argue the point. Is there anyone who will not admit that the value of human life is at its lowest ebb in our history and is being continually diluted even now? Even a slave had worth; but what is the value of a junky?

Every living organism has the power to out-reproduce its means of support. This implies that many zygotes die before secual maturity. This is natural. Fortunately birth control provides a means to avoid this waste. However, is it unnatural to kill a zygote when birth control fails? Of course not!

Perhaps our energies can be turned to real issues like the reclamation of the quality of life . . .

Tom Lundeen  
Zoology Graduate Student



## Matrix means 'change'

Continued from Page 1

There are approximately 36 people living in Matrix, perhaps 11 women, 25 men. The number may change from day to day. Some split or "drop-out" and there are no guards at the door to prevent them from leaving. When someone leaves Matrix, the others refer to him as "dead".

"To us, Matrix is the choice between life or death. Maybe there is prison but if we leave here, we'll only probably only go out and shoot dope and kill ourselves. It's life or death," one Matrix resident said.

Matrix had its beginning in November of 1969 when a group of residents at the Clinical Research Center (CRC) formed their own therapy group, called the Lighthouse. After a short while, several members of that group decided to take a drug-free pledge. They called these efforts "hypocritical" since at that time they had "no real commitment against drug use."

One member of Matrix who had stayed in CRC for some time said most of its residents only learn more about other people's drug experiences and where to make new contacts for

drugs when they get out. "The whole atmosphere was very negative," he said.

### Matrix begins

The members who took the pledge, however, found others were not so anxious to join their cause and soon the pledge faction broke away from the Lighthouse group. In January, 1970 the group named itself Matrix and as the group grew to about 20 members, they were given a ward of their own.

By that time the group's philosophy had also begun to grow, embodying the only two rules that Matrix has today—no drugs and no violence. Underlying it all, the members believed only trust in and concern for others would help them break away from their "dope fiend" behaviors.

In April of that year, the group was given a 100-bed unit which is now Matrix House. Its drab green walls and poor upkeep were slowly transformed into light blues, yellows, reds and oranges. The members of Matrix refurbished the building and began a daily housecleaning that makes any visitor wonder if he should smoke or not—not daring to mess up the spotless

ashtrays. While most people at Matrix do smoke, they wipe the ashtray clean each time they use one. Again, just another extreme.

Today, Matrix is completely operated and administered by ex-addicts, the first ever to be employed by the Federal government. Matrix is an official after-care agency, under the Narcotic Addict Rehabilitation Act of 1966. That does not mean however, that addicts are sent to Matrix as they are sentenced to prison.

### Voluntary program

The 18-month program at Matrix is completely voluntary and members are selected to participate after they apply. Some come directly off the street, others come from CRC. Anyone can leave Matrix if they feel they cannot adjust to the life style, a more rigorous one than many might expect.

"It's never really easy here," said one Matrix member, "but compared to my past and what my outlook was on the future, it's a new beginning on life."

Love Power!

Only at Helzberg!



"Elegance" \$145  
band \$25

HELZBERG  
FAYETTE MALL

LAY-AWAY  
NOW FOR  
CHRISTMAS



Kentucky Girl Apparel

174 Eastland Center

BEHIND LOWENTHALS IN EASTLAND

"The PLACE" to SHOP  
for those Pretty Fall and Winter Dresses  
and Apparel!

10% OFF

to all U.K. students and faculty members with  
presentation of I.D. on any item in our store  
except reduced merchandise.

— Effective Only October 25th thru October 29th —

BANKAMERICARD — MASTER CHARGE — SHOPPERS CHARGE

## UK seeks pest control

Continued from Page 1

Another method of combating insect and mite attack is developing plants that are genetically resistant to insects or mites, said Rodriguez.

The Entomology Dept. (along with the Horticulture Dept.) has met with some success in this area with beans, tomatoes and strawberries said Rodriguez. Mites, along with a number of other insects, feed on the leaves of these plants.

Also, research has developed a strawberry plant that mites will not attack. Rodriguez said the mites will try to find a way to get away from the plant if possible, and will not thrive if confined to the plant.

Rodriguez also said a tomato that gives off a substance that "actually kills mites," has also been discovered.

### Tomato for insect control?

Although this type of tomato is not particularly edible, it may offer a possibility for insect control if plant breeders can incorporate its mite-killing substance into commercial varieties.

Rodriguez pointed out the program was aimed at eliminating, as far as possible, the use of insecticides in farming.

SHIRTS — 1/2 Price!

Shamburger's  
Inc.

819 EUCLID AVE. — CHEVY CHASE

# SALE!

## ALL SWEAT SHIRTS

were \$3.25 — now \$2.00

ALL BOOKS ON THE MEZZANINE — Now 20% Off Regular Retail Price!

## WALLACE'S BOOK STORE

Sale Ends Saturday, October 30th

**BEN SNYDER DEPT STORES**  
For Your Complete One Stop Shopping  
1-HOUR FREE PARKING In The Ben Ali Garage  
with \$3 Purchase

Department of Theatre Arts Student Production

### THE BIRTHDAY PARTY

by Harold Pinter

Directed by Clay Nixon

Laboratory Theatre — Fine Arts Building

OCTOBER 27, 28, 29, 30 ..... 8:30 p.m.

OCTOBER 30—Matinee ..... 2:30 p.m.

OCTOBER 31 ..... 7:30 p.m.

— For reservations call 258-2680 from noon daily —

COUNTRYWIDE THEATRES, INC.

**CINEMA** 220 E. MAIN ST. 254-6006  
ENDS TUES. **GARBO** QUEEN CHRISTINA

**KENTUCKY** 214 E. MAIN ST. 254-6010  
ENDS TUES. 20th Century Fox presents **The Marriage of a Young Stockbroker** COLOR BY DELUXE

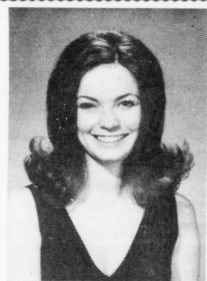
**STRAND** 100 EAST MAIN ST. 254-2070  
ENDS TUESDAY!  
COLUMBIA PICTURES Presents A BEB PRODUCTION **DRIVE, HE SAID** "BRILLIANT!" Newsday  
A Film by JACK NICHOLSON THE MOST CONTROVERSIAL FILM at the year's CANNES FILM FESTIVAL!



OPEN DAILY  
10 TO 9

# VOTE for HCQ

TUESDAY and WEDNESDAY, OCTOBER 26, 27



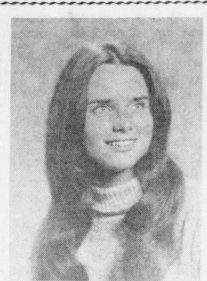
SUSAN ALLEN  
*Chi Omega*



DONNA BRYANT  
*B. S. U.*



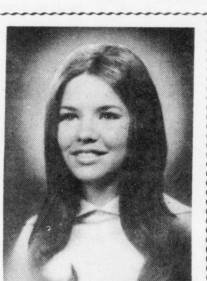
RITA DAY  
*Pi Kappa Alpha*



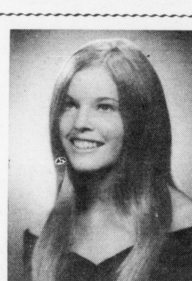
TRAVIS FRITSCH  
*Alpha Delta Pi*



CANDY GUYTHER  
*Delta Zeta  
Sigma Phi Epsilon*



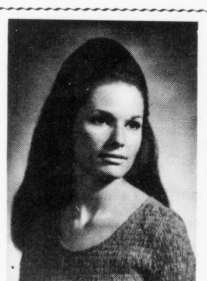
JENNY HAYES  
*Pi Beta Phi*



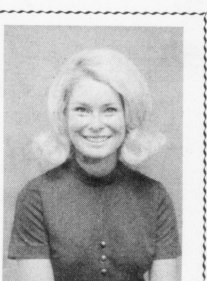
BAINIE HILLENMEYER  
*S. A. E.*



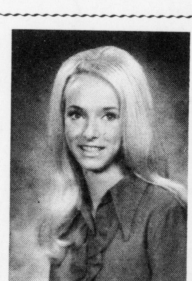
KATHY HUNTER  
*Alpha Chi Omega*



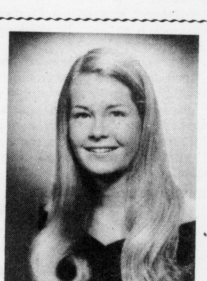
PAGE MOORE  
*Delta Delta Delta*



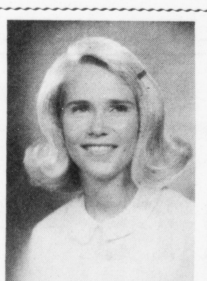
BARBARA MORAN  
*Sigma Chi*



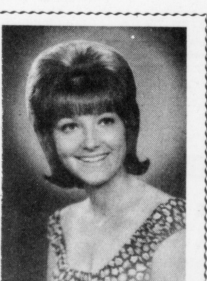
TERRY SCHNEIDER  
*Alpha Tau Omega*



HILMA SKONBERG  
*Kappa Kappa Gamma*



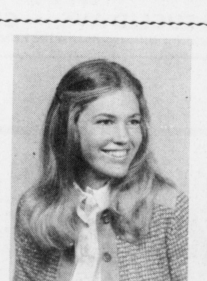
VIRGINIA SHEPHERD  
*Theta Chi*



JANET STIVERS  
*Blanding I*



PAM STRANE  
*Delta Tau Delta*



MARTY TREITZ  
*Blanding Tower*

10-5 p.m. - SC, CB, CP, Ag Science, Med Center  
4:30-6 p.m. - Donovan, Blazer, Complex Cafeterias  
6-9 p.m. - SC, Complex Commons



# The bad news . . .

## Defense tires, UK gives way to Georgia 34-0

By MIKE FIELDS  
Kernel Staff Writer

Sparked by a third quarter 56-yard punt return, the Georgia Bulldogs turned a close game into another forgettable nightmare for UK, 34-0.

For the first 30 minutes, Kentucky exhibited a magnificent defense, allowing a powerful Georgia attack only two field goals.

At the same time, however, the Wildcats' offense was gaining nothing on the ground, down after down after down. So complete was Georgia's defense, Kentucky failed to eke out even one first down.

The second half started out much the same way. Then, with seven minutes left in the third quarter, Georgia cornerback Buzzy Rosenberg ignited the Bulldogs and the homecoming crowd with a 56-yard punt return to the Kentucky two-yard line. Two plays and a two-point conversion later, it was 14-0.

### 6th straight loss

After that, it was all downhill toward Kentucky's sixth straight loss.

After intercepting a pass in UK's next series, Georgia quickly moved in for another score, 20-0.

Up to this time, the defense had played a commendable game. The offense, however, had not even recorded a first down.

So it was just a matter of the defense having to give it a try too many times. Coach John Ray conceded this:

"Our offense was disappointing, sure, but Georgia doesn't have just a good defense, it has a great one. By far the best we've played. And it took a freak event, a punt return, to knock us out of it."

Defense plays well  
Coach Ray also pointed out

that Kentucky had limited Georgia to only 225 yards total offense, well below their season average.

All UK can do now though, is look ahead. Next Saturday is homecoming day at UK. The Cats play Virginia Tech, who, by the way, defeated Ohio University Saturday, 37-29.



"The defense just wore down having to play so much."

### Bulldogs score again

Georgia scored two more times. Once on a 23-yard pass from Johnson to Greene, and again on a one-yard plunge by substitute Hal Bissell.

Meanwhile, UK had made threatening gestures only twice. Once, after driving to the Georgia 13, three incomplete passes drew zero. The other came with seconds left in the game and Kentucky on the Georgia one-foot line. A five-yard penalty, however, sealed the shutout.

Asked for his opinion on the game, Coach Ray gave this assessment:

"I was very well pleased with our defense. I thought they played as well as they could for as long as they could."

# The good news

## Minor UK teams do well

The UK water polo team upped its record to 14-2 by sweeping five games in Chicago last weekend.

UK, whose top scorers were Keith Swetz and Art Fleming, defeated Purdue 8-7, Western Illinois 1-0, Wisconsin 24-12, Chicago Circle 14-7 and George Williams 18-8.

The cross-country squad

### Finale tonight

Sigma Phi Epsilon and Delta Tau Delta vie for the fraternity flag football title at 6 p.m. tonight on the Sports Center field if the rain goes away.

## Classified

Classified advertising will be accepted on a pre-paid basis only. Ads may be placed in person Monday through Friday or by mail, payment enclosed, to THE KENTUCKY KERNEL, Room 111, Journalism Bldg.

Rates are \$1.50 for 20 words; \$3.75 for three consecutive insertions of the same ad of 20 words, and \$5.00 per week for 20 words. 19 cents per word over 20 words, per insertion.

The deadline is 11 a.m. the day prior to publication. No advertisement may cite race, religion or national origin as a qualification for renting rooms or for employment.

### FOR SALE

'69 PONTIAC Lemans convert. 350 H.O. 4-speed, very clean. Many extras. 703 Hambrick. 252-9116. 20026

TV—Sears 16 inch, model year 68-69. Black & white. \$45. Call weekends and weekday after 5 p.m. 254-9880. 21037

1968 FIREBIRD Convertible. Six cylinder, 3-speed, power steering. Best offer. Call 278-2510 or see at 3572 Keithshire. Afternoons. 20029

### WANTED

TWO UK basketball season tickets. Will pay reasonable price. Call 254-7318 days; 266-0817 nights. Ask for Webb. 20026

SCIENCE FICTION paperbacks. Will pay 10c to 35c each. Will pick up. Call 252-4108. 21025

TWO ROOMMATES—Male. \$35 month apt; female 2 rooms \$37 month. Prefer upper graduate or graduate students. 253-2628 or 255-8108. 21021

FRENCH TUTOR for Intermediate French Course. Very good pay. — 266-1998 after 8 p.m. 20027

GOLF CLUBS — 1-3 woods, 3-5-7-9 irons. Pay \$100. Call 257-2757 before 5 p.m. 025

### JOB OPPORTUNITIES

STUDENTS—Students' wives. Part or full time jobs. Hours to suit your schedule. 222-8829. Ask for Mrs. Love. 20023

### FOR RENT

SINGLE \$12 per week; double \$7 per week. One block from UK Med Center. Private entrance. Refrigerator. Gentlemen. 269-2034. 22025

### FAMILY COUNSELING

Health Service

233-5823

Counseling and Testing  
258-8701

placed fifth among 35 teams in the Calloway Garden Invitational at Pine Mountain, Ga. Saturday. UK was paced by Paul Baldwin, who finished sixth.

Florida Track Club won the meet and was followed by East Tennessee, Alabama and Tennessee.

Joe Foran's 30-yard penalty kick boosted the rugby club to a 3-0 victory over host Cincinnati in the rain Sunday. UK's squad won, beating Cincy 18-6.

**AUTUMN SPECIAL**

In celebration of our 90th year  
serving this area with quality cleaning!

MIX 'EM OR MATCH 'EM

**Skirts & Sweaters**

**3 for \$1.19**

Offer good thru October 30.

**DeBoor-Lexington Laundry**

265 Euclid Ave.

**FLICK NIGHT**

TUESDAY, OCTOBER 26 at the FIREPLACE  
from 8:30 'til 12:30

HALLOWEEN SPECIAL — Monster Movies featuring  
Frank & Drack  
FREE POPCORN

WEDNESDAY, OCTOBER 27  
★ NO COVER CHARGE ★  
Music by the  
EDDIE EVERETTE GROUP

THURSDAY, OCTOBER 28  
EXILES

**Fireplace 825 Euclid**

C.C. COOL CONTEMPLATES:  
"CONSIDER CONVENIENT,  
THEY CARRY ALL THE  
NECESSITIES."



**CONVENIENT**  
FOOD MARTS

## Oswald Undergraduate Research & Creativity Program

Instituted during the Centennial Year celebration, the Undergraduate Research & Creativity Program has for the past six years provided encouragement for students to engage in scholarly activities. The objectives of the program are to stimulate creative work on the part of all qualified undergraduates and to offer a measure of recognition for individuals who demonstrate outstanding achievement.

The Committee will welcome inquiries from any qualified students. Those interested should contact Jon Dalton, Room 120, Student Center no later than Monday, December 6, 1971. A coffee will be sponsored by the Committee for all entrants and interested faculty on that day at 2:00 p.m. in Room 206 of the Student Center. Deadline for submission of project is Tuesday, February 29, 1972, and the annual awards banquet will be held on Monday, April 17, 1972.



# CAMPUS CALENDAR

SUNDAY	MONDAY	TUESDAY	WEDNESDAY	THURSDAY	FRIDAY	SATURDAY
	<b>OCTOBER</b> <b>25</b> *Cinema—"The Magician," 6:30 & 9:15 p.m., S.C.T. Bridge Games, S.C. Rm. 363-65, 7-11 p.m. Coffee House, "Golden Braid," Complex Commons Library, 11 a.m. to 12 midnight Art Exhibit "John W. Grimes," Complex Commons Library, 11 a.m. to 12 midnight S.C.B. Photograph Exhibit by Conrad J. Prisma, Art Gallery, 11 a.m.-7 p.m. Student Affairs Reception for Nancy Green and Jerry Stevens, S.C. Pres's' Room, 3:30-5:00 p.m. Lecture by Samuel H. Baron on "The Transition from Feudalism to Capitalism in Russia," S.C. Rm. 206, 4 p.m. Jack Anderson, Poet, S.C. Rm. 245, 2-4 p.m.	<b>26</b> Homecoming Queen Elections at Cafeterias, Student Center, Classroom Bldg., Chem. & Physics Bldg. *Cinema—"The Magician," 6:30 & 9:15 p.m., S.C.T. Art Exhibit "John W. Grimes," Complex Commons Library, 11 a.m. to 12 midnight S.C.B. Photograph Exhibit by Conrad J. Prisma, Art Gallery, 11 a.m.-7 p.m. F.A.B. Art Gallery, Exhibit of Belgian Paintings, 10 a.m.-5 p.m. Coffee House, "Golden Braid," Complex Commons, 7:30 and 8:30 p.m.	<b>27</b> Homecoming Queen Elections at Cafeterias, Student Center, Classroom Bldg., Chem. & Physics Bldg. Chess Play, S.C. Rm. 363-65, 7-11:30 p.m., everyone invited Sigma Xi lecture by John Scarborough on "What Romans Thought of Technology," CB, Rm. 110, 7:30 p.m. *Laboratory Theater "The Birthday Party," F.A.B., 8:30 p.m. Art Exhibit "John W. Grimes," Complex Commons Library, 11 a.m. to 12 midnight S.C.B. Photograph Exhibit by Conrad J. Prisma, Art Gallery, 11 a.m.-7 p.m. F.A.B. Art Gallery, Exhibit of Belgian Paintings, 10 a.m.-5 p.m. Coffee House, "Golden Braid," S.C. Grille, 7:30 and 8:30 p.m.	<b>28</b> Lecture by Richard Hill on Transcendental Meditation, White Hall, Rm. 102, 8:00 p.m. Bridge Games, S.C. Rm. 363-65, 7-11 p.m. Art Exhibit "John W. Grimes," Complex Commons Library, 11 a.m. to 12 midnight Pep Rally, Stoll Field, 8 p.m. F.A.B. Art Gallery, Exhibit of Belgian Paintings, 10 a.m.-5 p.m. *Laboratory Theater "The Birthday Party," F.A.B., 8:30 p.m. Undergraduate Student Show, 8 a.m.-5 p.m., Barnhart Gallery, Reynolds Bldg. Civilization Series "Man—The Measure of All Things," C.B. Rm. 106, 7:30 p.m. S.C.B. Photograph Exhibit by Conrad J. Prisma, Art Gallery, 11 a.m.-7 p.m. *Mini Concert, "Supa and Golden Braid," S.C. Grand Ballroom, 9 p.m.	<b>29</b> Lecture by Richard Hill on Transcendental Meditation, White Hall, Rm. 102, 8:00 p.m. *Homecoming Haunt—8-12 p.m., S.C., 2nd & 3rd floors, singles \$1.00, couples \$1.50; tickets available at door Coffee House, "Golden Braid," S.C. Grille, 8:00, 9:00 and 10:00 p.m. *Cinema—"Joe," 6:30 & 9:15 p.m.; Horror Film "Freaks," 12 midnight, S.C.T. F.A.B. Art Gallery, Exhibit of Belgian Paintings, 10 a.m.-5 p.m. *Laboratory Theater "The Birthday Party," F.A.B., 8:30 p.m. Art Exhibit "John W. Grimes," Complex Commons Library, 11 a.m. to 12 midnight Undergraduate Student Show, 8 a.m.-5 p.m., Barnhart Gallery, Reynolds Bldg.	<b>30</b> *Homecoming Game—Ky. vs V.P.I., 1:30 p.m. Alumni Brunch, S.C., 11:00 a.m. Cross-Country Track Meet, 8-12 p.m., N.C.A.A. Regional, Williamsburg, Va. *S.C.B. Concert—"Blood, Sweat & Tears" Mem. Coliseum, 8:00 p.m. *Laboratory Theater "The Birthday Party," F.A.B., 2:30 and 8:30 p.m. Art Exhibit "John W. Grimes," Complex Commons Library, 11 a.m. to 12 midnight *Cinema—"Joe," 6:30 & 9:15 p.m.; Horror Film "Freaks," 12 midnight, S.C.T. F.A.B. Art Gallery, Exhibit of Belgian Paintings, 1-5 p.m.
<b>31</b> Chess Play, S.C. Rm. 363-65, 7-11:30 p.m., everyone invited *Cinema—"M," 6:30 & 9:15 p.m. Josh McDowell, S.C. Ballroom, 8 p.m. *Laboratory Theater "The Birthday Party," F.A.B., 7:30 p.m. Art Exhibit "John W. Grimes," Complex Commons Library, 11 a.m. to 12 midnight F.A.B. Art Gallery, Exhibit of Belgian Paintings, 1-5 p.m. Auditions for "The Night Thoreau Spent In Jail," F.A.B., Guignol, 2 p.m.	<b>NOVEMBER</b> <b>1</b> Beverly Sills, Memorial Coliseum, 8:15 p.m. *Cinema—"Report on the Party and the Guests," 6:30 & 9:15 p.m., S.C.T. Josh McDowell, S.C. Ballroom, 8 p.m. Bridge Games, S.C. Rm. 363-65, 7-11 p.m. Art Exhibit "John W. Grimes," Complex Commons Library, 11 a.m. to 12 midnight Omnicron Delta Kappa dinner for presidents of campus organizations, Central Ky. Women's Center, 6:30 p.m.	<b>2</b> F.A.B. Art Gallery, Exhibit of Belgian Paintings, 10 a.m.-5 p.m. U.K. Trivia Bowl, S.C. Theater, 7:00 p.m. Josh McDowell, S.C. Ballroom, 8 p.m.	<b>3</b> Faculty Chamber Recital, Memorial Hall, 8:15 p.m. F.A.B. Art Gallery, Exhibit of Belgian Paintings, 10 a.m.-5 p.m. Chess Play, S.C. Rm. 363-65, 7-11:30 p.m., everyone invited	<b>4</b> Bridge Games, S.C. Rm. 363-65, 7-11 p.m. Civilization Series "The Hero As Artist," C.B. Rm. 106, 7:30 pm F.A.B. Art Gallery, Exhibit of Belgian Paintings, 10 a.m.-5 p.m. U.K. Trivia Bowl, S.C. Theater, 7:00 p.m.	<b>5</b> *Cinema—"Cat Ballou," 6:30 & 9:15 p.m.; Horror Film "King Kong vs Godzilla," 12 midnight, S.C.T. F.A.B. Art Gallery, Exhibit of Belgian Paintings, 10 a.m.-5 p.m.	<b>6</b> *Ky. vs Vanderbilt at Nashville Cross-Country—Ky. Federation Championships, Louisville, Ky., 2 p.m. *Cinema—"Cat Ballou," 6:30 & 9:15 p.m.; Horror Film "King Kong vs Godzilla," 12 midnight, S.C.T. F.A.B. Art Gallery, Exhibit of Belgian Paintings, 1-5 p.m.
<b>7</b> Chess Play, S.C. Rm. 363-65, 7-11:30 p.m., everyone invited *Cinema—"1984," 6:30 & 9:15 p.m., S.C.T. F.A.B. Art Gallery, Exhibit of Belgian Paintings, 1-5 p.m.	<b>8</b> *Cinema—"Love Affair" or "Case of the Missing Switchboard Operator," 6:30 & 9:15 p.m., S.C.T. S.C.B. Games Tournaments: Chess, Bridge, Table Tennis, Pool, S.C., 7:00 p.m. Philosophy lecture, "Borderline & Paradoxical Questions," by Prof. John Wisdom, CB 118, 8 p.m. Meeting of U.K. Students for McGovern, S.C. Rm. 109, 7 p.m.	<b>9</b> U.K. Trivia Bowl, S.C. Theater, 7:00 p.m. S.C.B. Games Tournaments: Chess, Bridge, Table Tennis, Pool, S.C., 7:00 p.m. F.A.B. Art Gallery, Exhibit of Belgian Paintings, 10 a.m.-5 p.m. Philosophy lecture, "Borderline & Paradoxical Questions," by Prof. John Wisdom, CB 118, 8 p.m. Meeting of U.K. Students for McGovern, S.C. Rm. 109, 7 p.m.	<b>10</b> Nathaniel Patch, Piano, Memorial Hall, 8:15 p.m. S.C.B. Games Tournaments: Chess, Bridge, Table Tennis, Pool, S.C., 7:00 p.m., S.C.T. *Cinema—"Love Affair" or "Case of the Missing Switchboard Operator," 6:30 & 9:15 p.m., S.C.T. F.A.B. Art Gallery, Exhibit of Belgian Paintings, 10 a.m.-5 p.m. Philosophy lecture, "Appearance & Reality," by Prof. John Wisdom, CB 118, 8 p.m. Phi Alpha Theta—History Honorary, S.C. Rm. 206, 3:45 p.m.	<b>11</b> U.K. Trivia Bowl, S.C. Theater, 7:00 p.m. Lecture by Richard Hill on Transcendental Meditation, White Hall, Rm. 102, 8:00 p.m. *Cinema—"Privilege," 6:30 & 9:15 p.m.; Horror Film "Frances in the Haunted House," 12 midnight, S.C.T. *Joseph C. Harsch, lecturer, Memorial Coliseum, 8:15 p.m. Civilization Series "Protest and Communication," C.B. Rm. 106, 7:30 p.m. Philosophy lecture, "Critical Judgments," by Prof. John Wisdom, S.C. Theater, 4 p.m.	<b>12</b> Lecture by Richard Hill on Transcendental Meditation, White Hall, Rm. 102, 8:00 p.m. *Cinema—"Privilege," 6:30 & 9:15 p.m.; Horror Film "Frances in the Haunted House," 12 midnight, S.C.T.	<b>13</b> *Ky. vs Florida at Gainesville *Cinema—"Privilege," 6:30 & 9:15 p.m.; Horror Film "Frances in the Haunted House," 12 midnight, S.C.T.
<b>14</b> *Cinema—"Ten Days That Shook The World," 6:30 & 9:15 p.m., S.C.T. Chess Play, S.C. Rm. 363-65, 7-11:30 p.m., everyone invited	<b>15</b> *Cinema—"Three Penny Opera," 6:30 & 9:15 p.m., S.C.T. S.C.B. Games Tournaments: Chess, Bridge, Table Tennis, Pool, S.C., 7:00 p.m. Lecture: Prof. Lanny Bell, U. of Penn., "Mummies & Magic: An Introduction to Ancient Egyptian Funerary Beliefs," C.B. 110, 8:15 p.m. Cross-Country—S.E.C. Championships, Birmingham, Ala., 10 a.m.	<b>16</b> U.K. Trivia Bowl, S.C. Theater, 7:00 p.m. S.C.B. Games Tournaments: Chess, Bridge, Table Tennis, Pool, S.C., 7:00 p.m.	<b>17</b> S.C.B. Games Tournaments: Chess, Bridge, Table Tennis, Pool, S.C., 7:00 p.m. Roten Galleries Art Show, S.C. Rm. 206, 10-5 p.m. *Cinema—"Three Penny Opera," 6:30 & 9:15 p.m., S.C.T.	<b>18</b> U.K. Trivia Bowl, S.C. Theater, 7:00 p.m. Civilization Series "Grandeur & Obedience," C.B. Rm. 106, 7:30 p.m. John Browning, Pianist, Memorial Coliseum, 8:15 pm.	<b>19</b> *Cinema—"America, America," 6:30 & 9:15 p.m.	<b>20</b> Ky. vs Tennessee, Lexington, 1:30 p.m. *Cinema—"America, America," 6:30 & 9:15 p.m.

★ Call or send campus events to the Student Center Board, Room 203, Phone 258-8867 ★

\*Admission Fee

## Games Tournaments

November 8-10, 15-17  
7-11 p.m.

Bridge, Chess, Billiards, and  
Table Tennis

Entry Forms in Room 203, S.C.  
Apply October 20-November 2

\$1.00/entry

## Coffee House

"Golden Braid"

Mon.-Tue.—Complex—7:30 p.m.

Wed.—S.C. Grille—7:30 p.m.

Thurs.—MINI CONCERT—9 p.m.

"Supa"

Fri.—S.C. Grille—8 p.m.



## The Cage

A STAGE PRODUCTION

Friday, November 12

8 p.m.

S.C. Ballroom

## Trivia Bowl

Nov. 2 & 4 } 7 p.m.  
Nov. 9 & 11 } S.C. Theater  
Nov. 16 & 18 }

Applications in Room 203, S.C.

## Homecoming Activities

Voting for Homecoming Queen  
Tuesday, Wednesday, Oct. 26, 27

Coffee House, October 25

Pep Rally—8 p.m.—Stoll Field

Thursday, October 28

Homecoming Haunt—8-12—S.C.

Concert—B, S & T and Bill Withers

— Tickets Still On Sale —