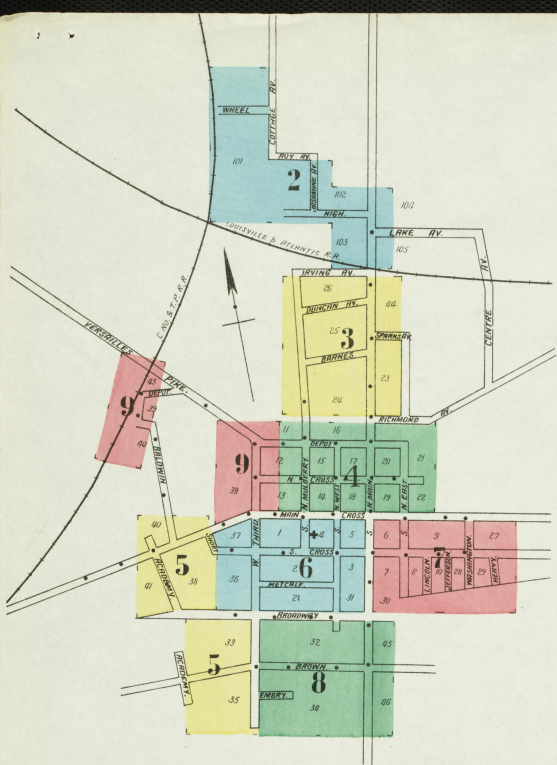


LIBRARY OF CONGRESS
Two Copies Received
DEC 28 1903
JAN 4 1904
50.116



KEY

THE WALLS AND ROOF
METAL CORNER
AND WALLS IN IRON ROOF
CHIMNEY
FIRE WALL IN IRON ROOF
FRANK PATENT CO.
OPENING WITH IRON DOOR
STANDARD
WINDOWS IN IRON SHUTTERS
WINDOWS IN STORIES
STAIRS
STAIRS

BUILDINGS COLORED YELLOW ARE FRAME
RED BRICK
GREEN GRAY
BLUE BRICK
GREEN BRICK
SPECIALS

① INDICATE RELATIVE HEIGHTS
② FIRE STATION, AS SHOWN BY KEY
ALTERNATE STREET NUMBERS ARE ACTUAL
CONSECUTIVE STREET NUMBERS ARE ARBITRARY

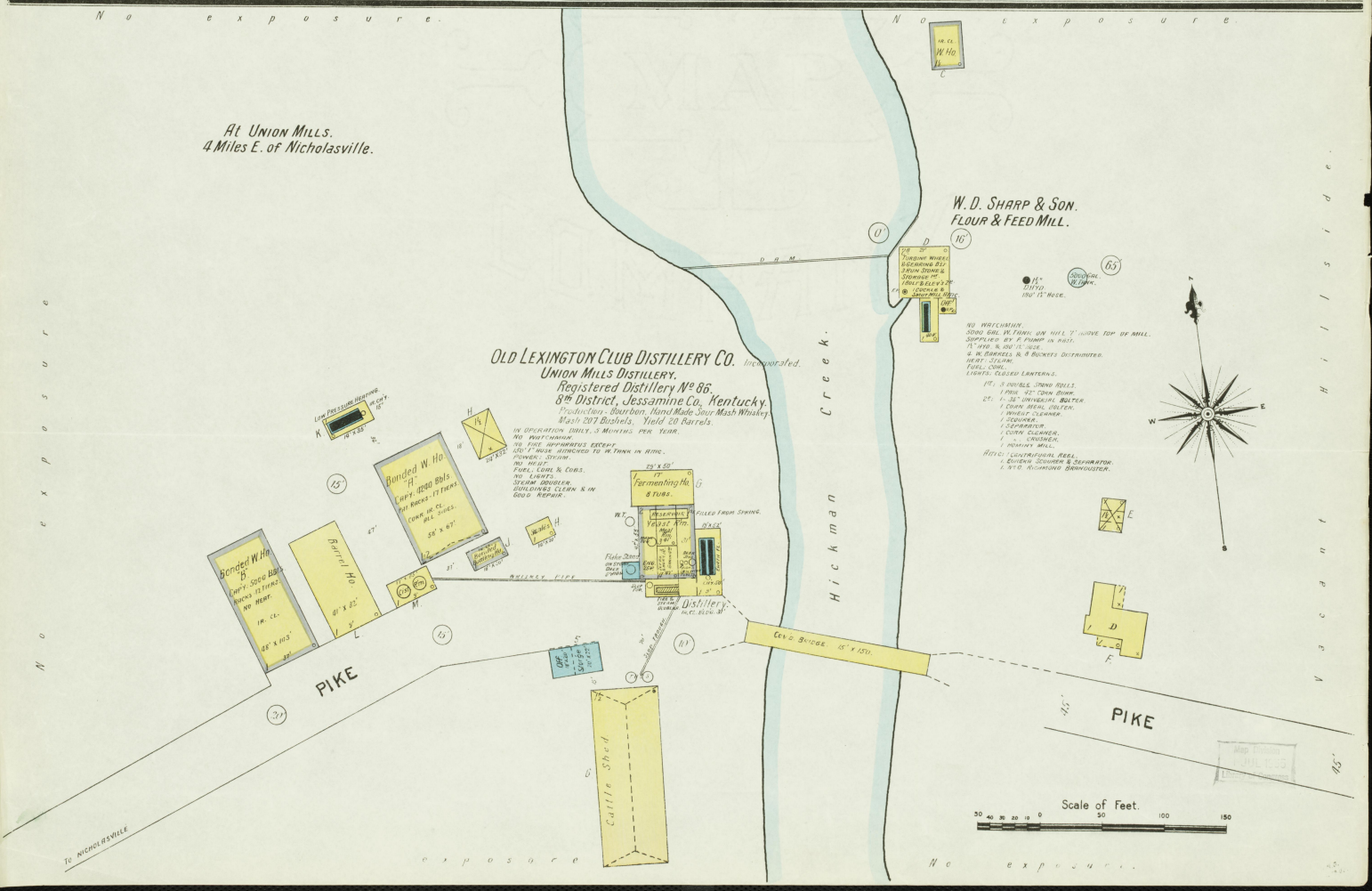
NOTE.

Water Facilities.
GRABBY IS DIRECT PRESSURE SYSTEM
STANDARD FIRE ALARMS: DEPT. 185-200 GALL.
2 SIGNALS, 200 GALL. P. PLUMBER COPY, 250-300 GALL. EACH.
PUMP, WATER AND STAIRS PUMP.
IN CASE OF EMERGENCY, A 4,000,000 RESERVOIR CAN BE DRAWN FROM.
PUMP HAS 4 PIPES TO CITY MAIN.
IN CASE OF FIRE DIRECT PRESSURE CAN BE HAD
BY BELLS 2" TO 6" WATER MAIN.
USE DOUBLE FITTINGS
STANDARD FIRE OVERHEAD PRESSURE 50 LBS. PER SQ. INCH.

Fire Department.
10 VOLUNTEERS: 1 PUMP ROOM ON DUTY ALL TIME
1 FIRE OVERHEAD HOSE PUMP WITH HOSE 2 1/2 INCH RUBBER HOSE.
1 HOOK HOSE REEL 300' 2 1/2"
2 LADDERS
LIVING JACKS
BELLS & WHISTLE ALARM
Streets
INDICATED - GRADES LEVEL.

INDEX

STREETS.		M		W		K	
Academy, A	5	Main, N.	1-78	Washington, W	1-60	Kentucky Distilleries and Warehouse Co.,	10
Baldwin, B	5 & 9	"	79-120	West, N.	1-48	L	
Barney, B	5	"	121-100	" S.	1-80	Longbridge & Rogers, Hemp Warehouse,	4
Broadway, B	1-30	"	"	"	81-88	L. & A. R. Passenger Depot,	2
Brown, B	1-38	"	2-40	"	2-78	M	
Cemetery Ave., C	2	"	2-40	"	60-138	Methodist Episcopal Church,	7
Cottage Ave., C	2	"	35-57	"	101-103	Murphy & Horne, Grain Warehouse,	9
Depot, D	100-165	"	48-80	"	140-190	N	
Duncan Ave., D	165-178	"	48-80	"	165-189	Nicholasville Electric Light Plant,	2
East, N., E	2-51	"	39-60	"	191-212	Steam Laundry,	6
Embry, E	1-70	"	39-60	"	215-217	O	
Hervey, H	2	"	39-60	"	215-217	Old Lexington Club Distillery Co.,	1
High, H	2	"	39-60	"	215-217	Opera House,	4
Irving Ave., N. S., I	2	"	39-60	"	215-217	P	
Jefferson, J	1-30	"	39-60	"	215-217	Presbyterian Church,	4
Jessamine Ave., J	2	"	39-60	"	215-217	R	
Lake Ave., L	2	"	39-60	"	215-217	Roy Lumber Co., Saw and Plan'g Mill and Lumber Yard,	2
Lincoln, L	30-67	"	39-60	"	215-217	S	
		"	39-60	"	215-217	Sharp, W. D. & Son, Flour and Feed Mill,	1
		"	39-60	"	215-217	Shipman, R. G., Distillery,	10
		"	39-60	"	215-217	Smith, M. C., Wood and Coal,	4
		"	39-60	"	215-217	Son & Co., Stave Mill,	9
		"	39-60	"	215-217	South Methodist Episcopal Church,	4
		"	39-60	"	215-217	Sparks Building,	4
		"	39-60	"	215-217	Standard Oil Co.,	9
		"	39-60	"	215-217	Star Milling Co.,	9
		"	39-60	"	215-217	Steel, W. L. & Co., Elevator,	9
		"	39-60	"	215-217	Union Mills Distillery,	1

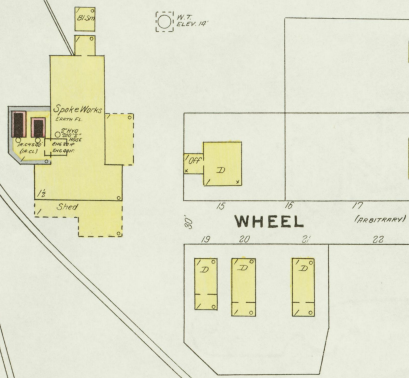


Oct 1903
NICHOLASVILLE
KY.

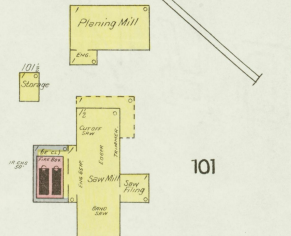
2

STANDARD WHEEL CO. Inc.
SPOKE WORKS.

NIGHT WATCHMAN, CLOCK 1 STATION, HALF HOURLY.
ROUND: LUMBER, ELEC. MACHINERY, FUEL, REPAIRS, CITY
WATER. SADDLE, IN TANK, ELEV. 18'. WHICH SUPPLIES
2 1/2 IN. 300' ST. HOSE, TANK, PULLEY, 80' CITY WATER
SRLS & SICKETS DISTRIBUTED



WHEEL
(See Plan)



ROY LUMBER CO.
SAW & PLANING MILL & LUMBER YARD

NIGHT WATCHMAN, NO LUMBER, LUMBER, ELEC. MACHINERY, FUEL, REPAIRS,
CITY WATER. 8' 10" HOSE, 120' 10" HOSE, SRLS & SICKETS
DISTRIBUTED THROUGH WHEELS & YARD. 8' HOSE EXTENSION
BLOWER TO PLANERS.

AV. COTTAGE

2

HIGH

103

NICHOLASVILLE ELECTRIC LIGHT PLANT
RUN UNTIL 12 O'CLOCK NIGHT. NO WATCHMAN, LIGHTS
ELEC. NO HEAT, FUEL, ELEC. NO FUEL OIL

3

ROY AV.

Lumber W. Ho.

LUMBER 12'

LUMBER 12'

LUMBER 12'

LUMBER 12'

LUMBER 12'

LUMBER 12'

LUMBER 12'

LUMBER 12'

LUMBER 12'

LUMBER 12'

N. MAIN

JESSAMINE AV.

LAKE AV.

105

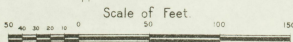
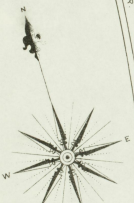
S. R. SPARKS, TOBACCO W.H.O.

102

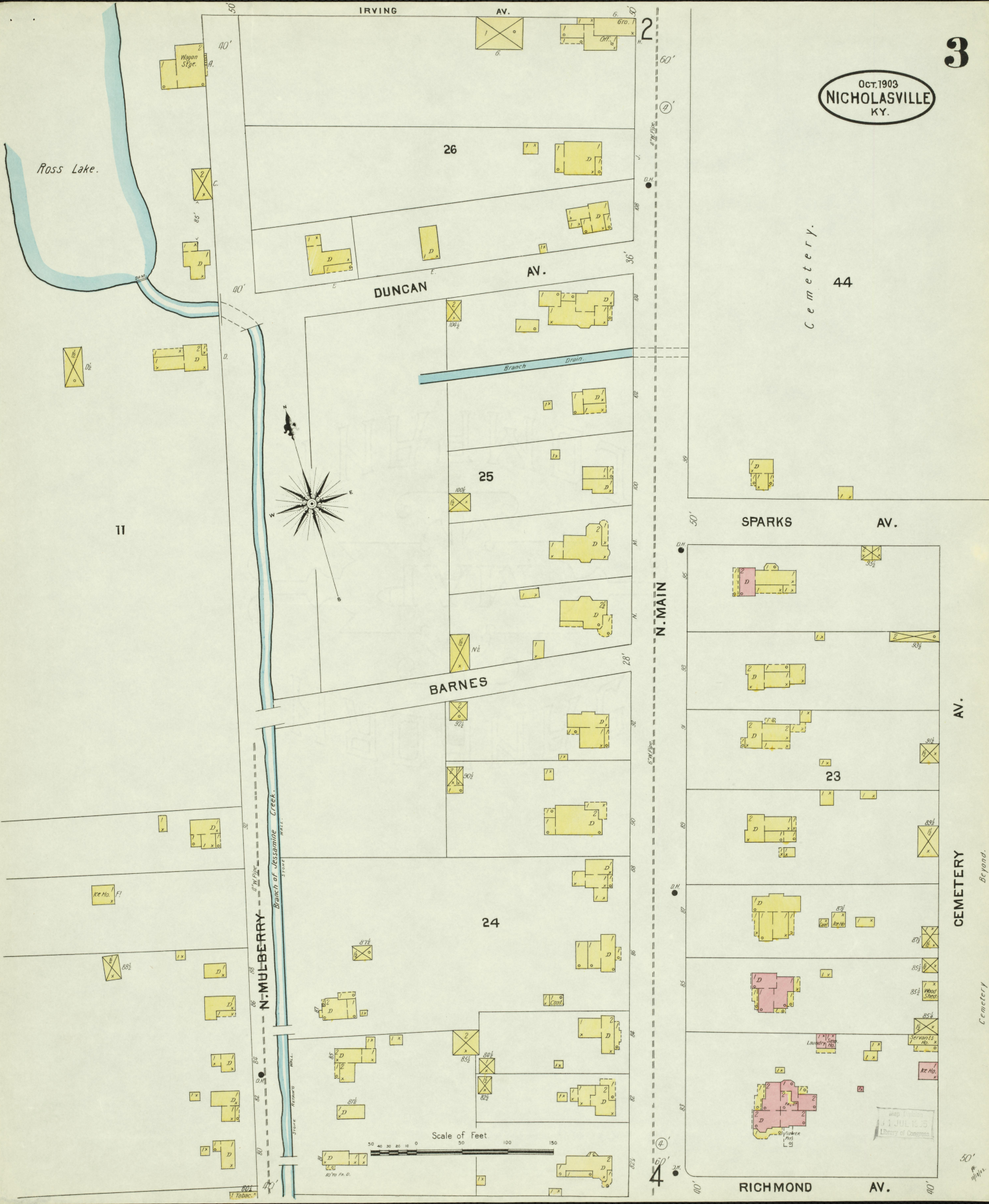
HIGH

103

2



OCT. 1903
NICHOLASVILLE
KY.



11

44

SPARKS AV.

23

24

26

IRVING AV.

DUNCAN AV.

BARNES

N. MULBERRY

N. MAIN

AV. CEMETERY

RICHMOND AV.

4

Scale of Feet



OCT. 1903

NICHOLASVILLE
KY.

Cemetery.

Cemetery Beyond.

50'

Oct. 1903
NICHOLASVILLE
KY.



MAIN CROSS

NORTH CROSS

N. MULBERRY

N. WEST

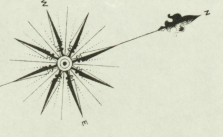
N. MAIN

N. EAST

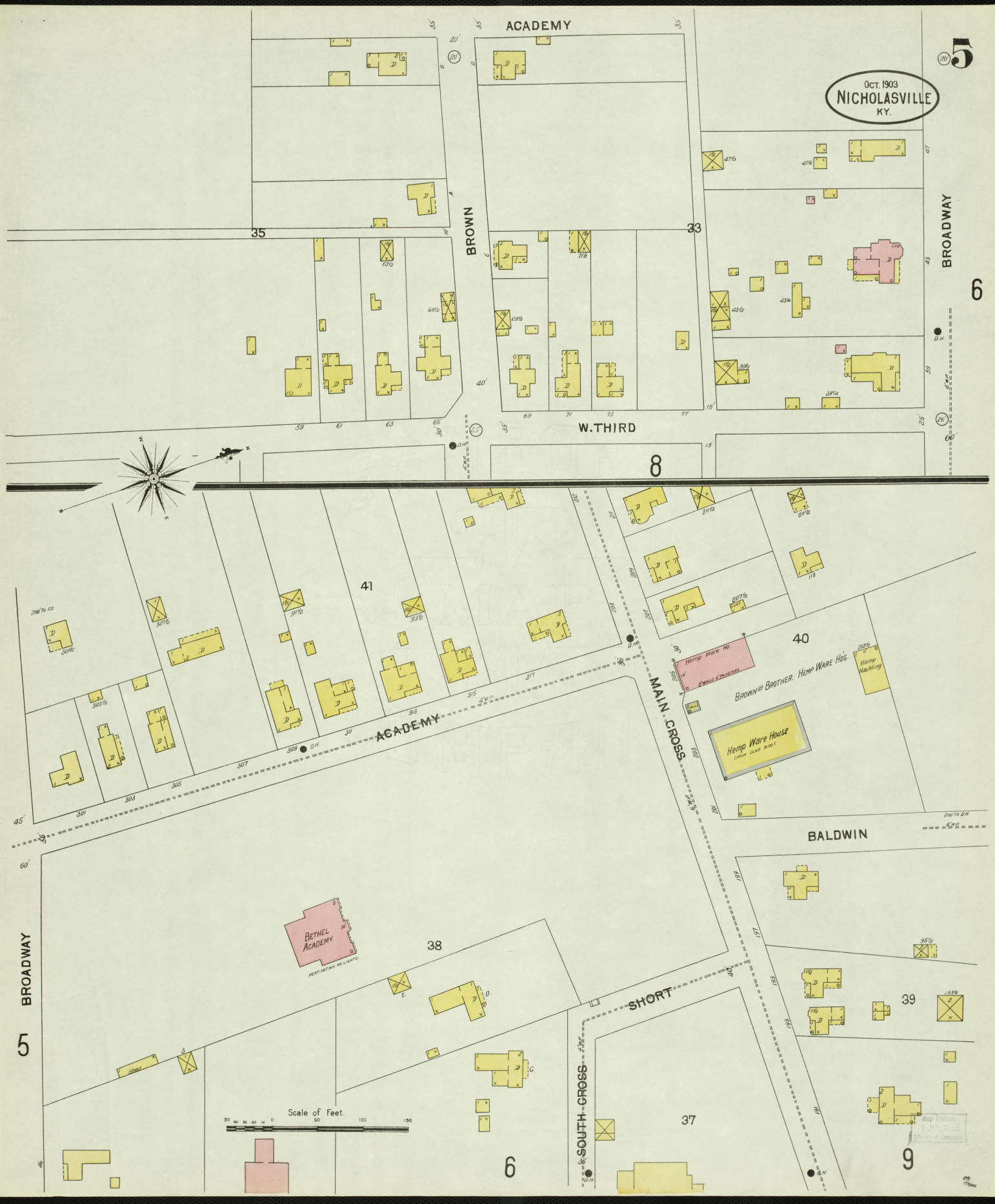
DEPOT

RICHMOND
AV.

Scale of Feet
0 50 100 150



Oct. 1903
NICHOLASVILLE
KY.



Scale of Feet.
0 50 100 150

5
BROADWAY

5

BROADWAY

6

ACADEMY

BROWN

W. THIRD

8

ACADEMY

MAIN CROSS

BALDWIN

SHORT

SOUTH CROSS

38

39

37

6

9

41

40

45'

60'

45'

35'

40'

35'

40'

35'

40'

35'

40'

35'

40'

35'

40'

35'

40'

35'

40'

35'

40'

35'

40'

35'

40'

35'

40'

35'

40'

35'

40'

35'

40'

35'

40'

35'

40'

35'

40'

35'

40'

47'

47'

47'

47'

47'

47'

47'

47'

47'

47'

47'

47'

47'

47'

47'

47'

47'

47'

47'

47'

47'

47'

47'

47'

47'

47'

47'

47'

47'

47'

47'

47'

47'

47'

47'

47'

47'

47'

47'

47'

47'

47'

47'

47'

47'

47'

47'

47'

47'

47'

47'

47'

47'

47'

47'

Oct. 1903
NICHOLASVILLE
KY.

6

9

4

7

60'

5

8

25

BROADWAY

METCALF

SOUTH CROSS

MAIN CROSS

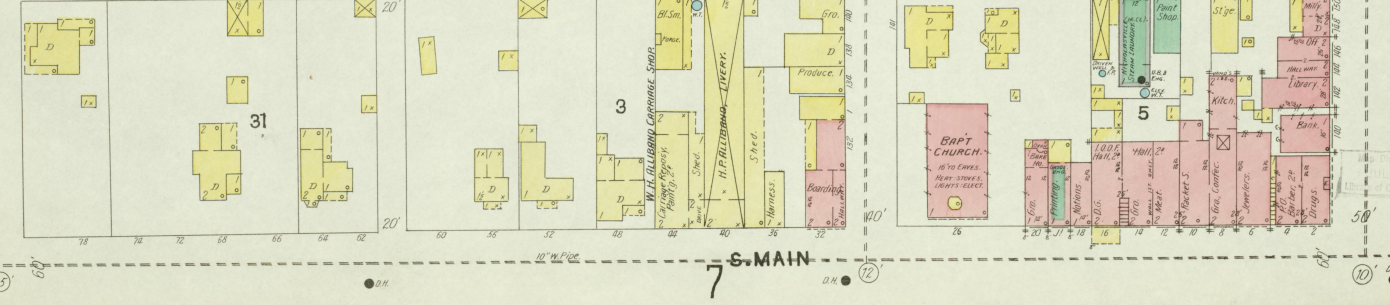
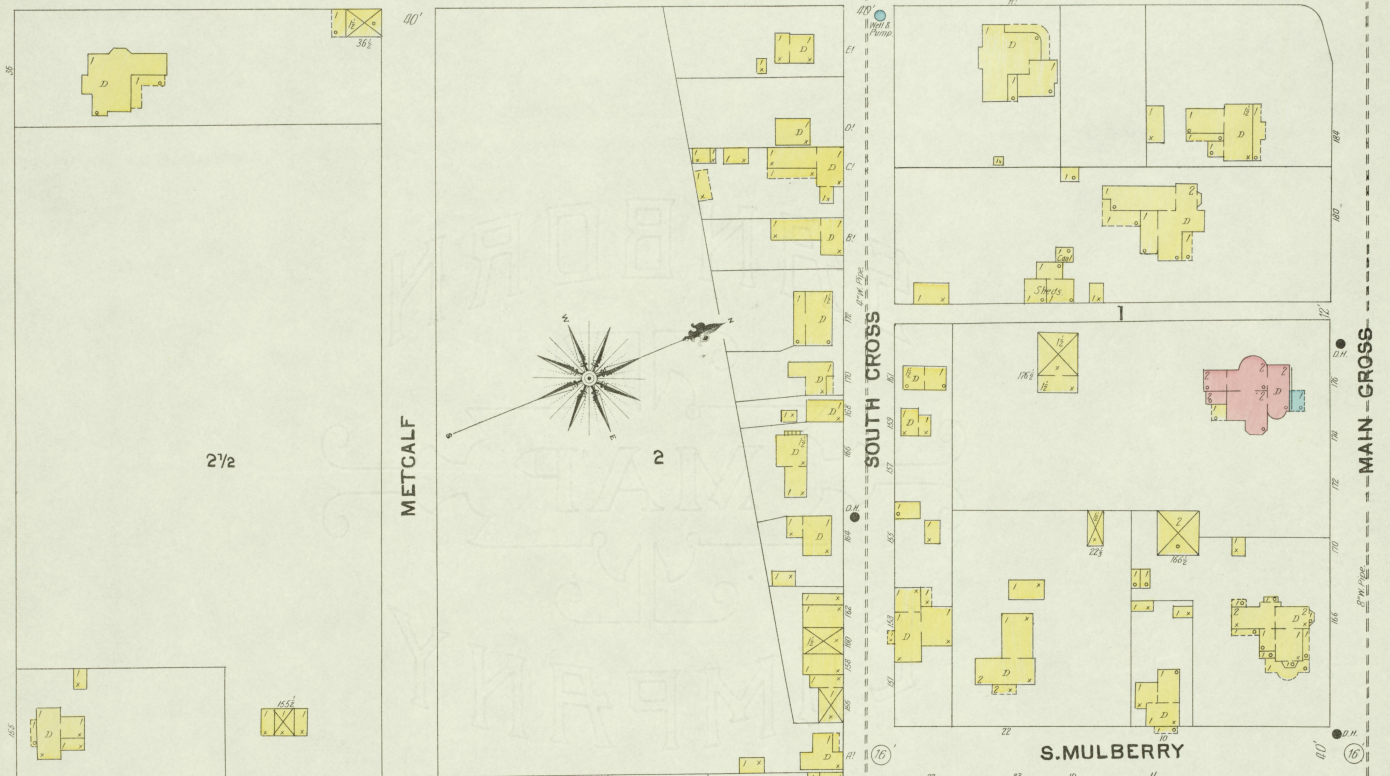
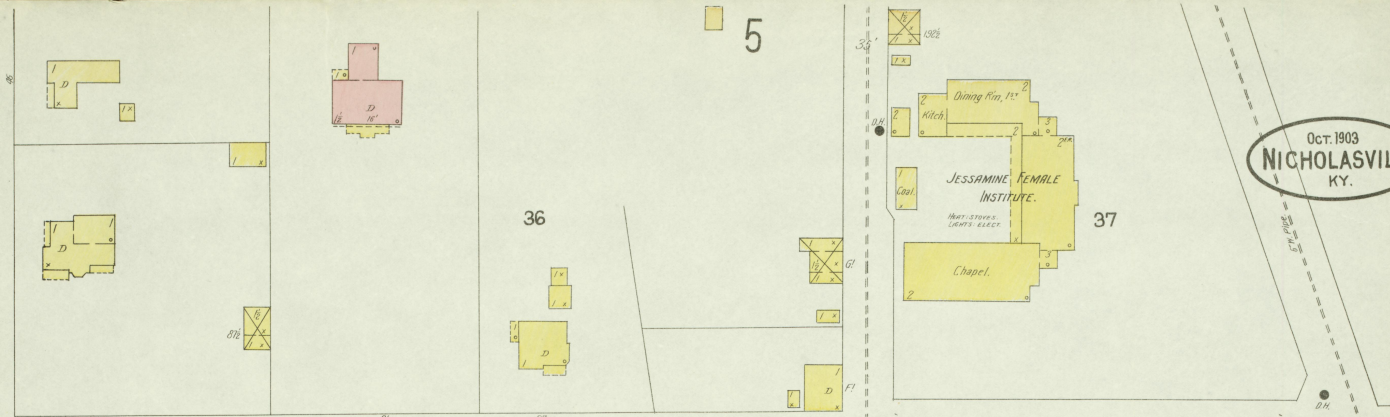
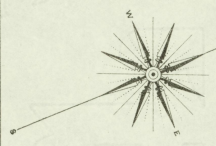
W. THIRD

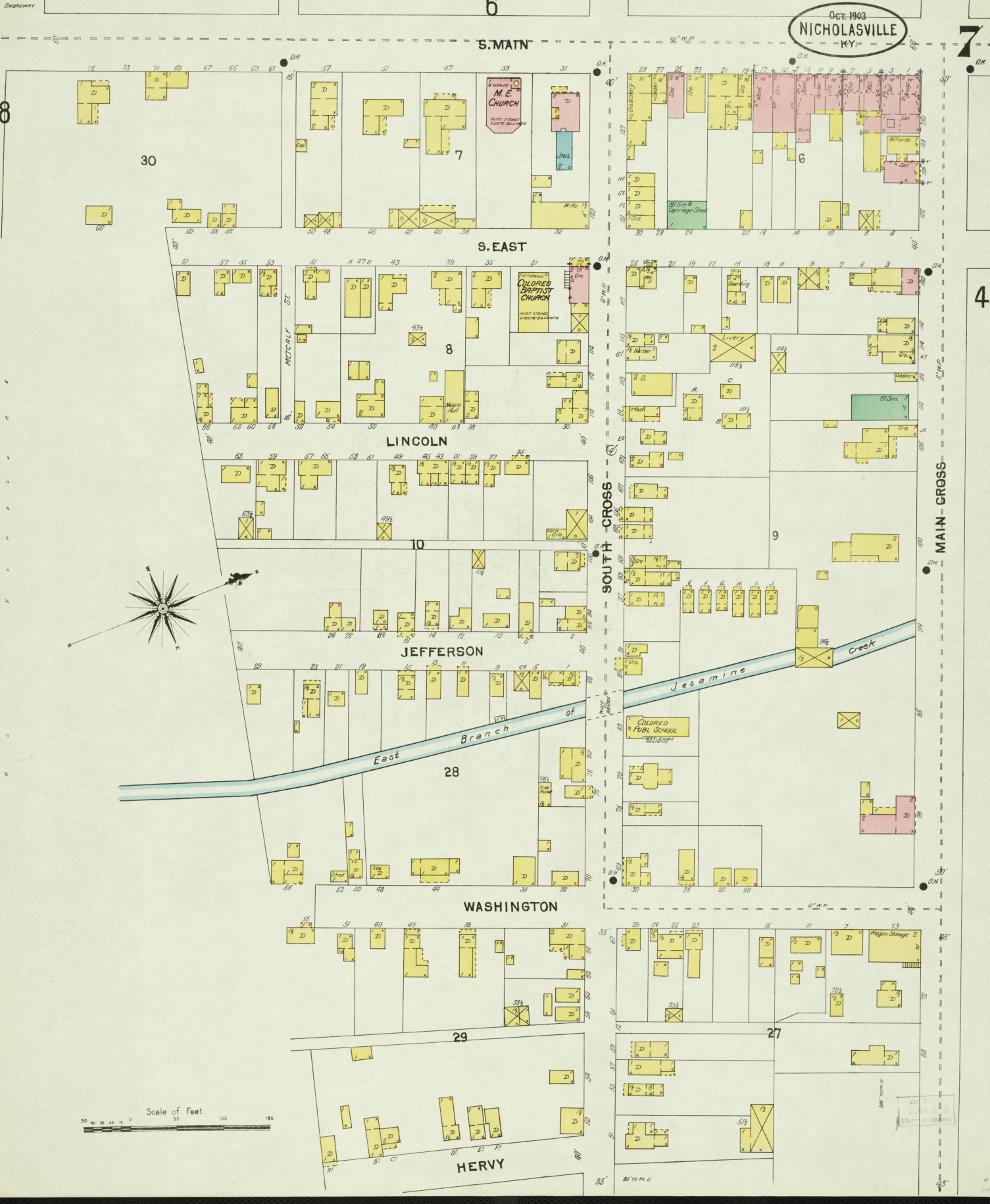
S. MULBERRY

S. WEST

S. MAIN

Scale of Feet.
0 25 50 75 100 125 150





Scale of Feet.
0 20 40 60 80 100 120 140 160 180 200

Map of
Nicholasville, Ky.
October 1903

W. THIRD

EMBRY

BROWN

BROADWAY

S. WEST

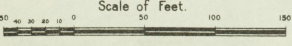
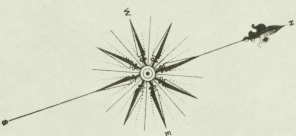
S. MAIN

34

26

46

45

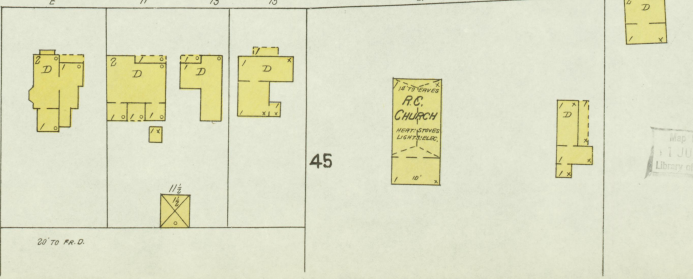
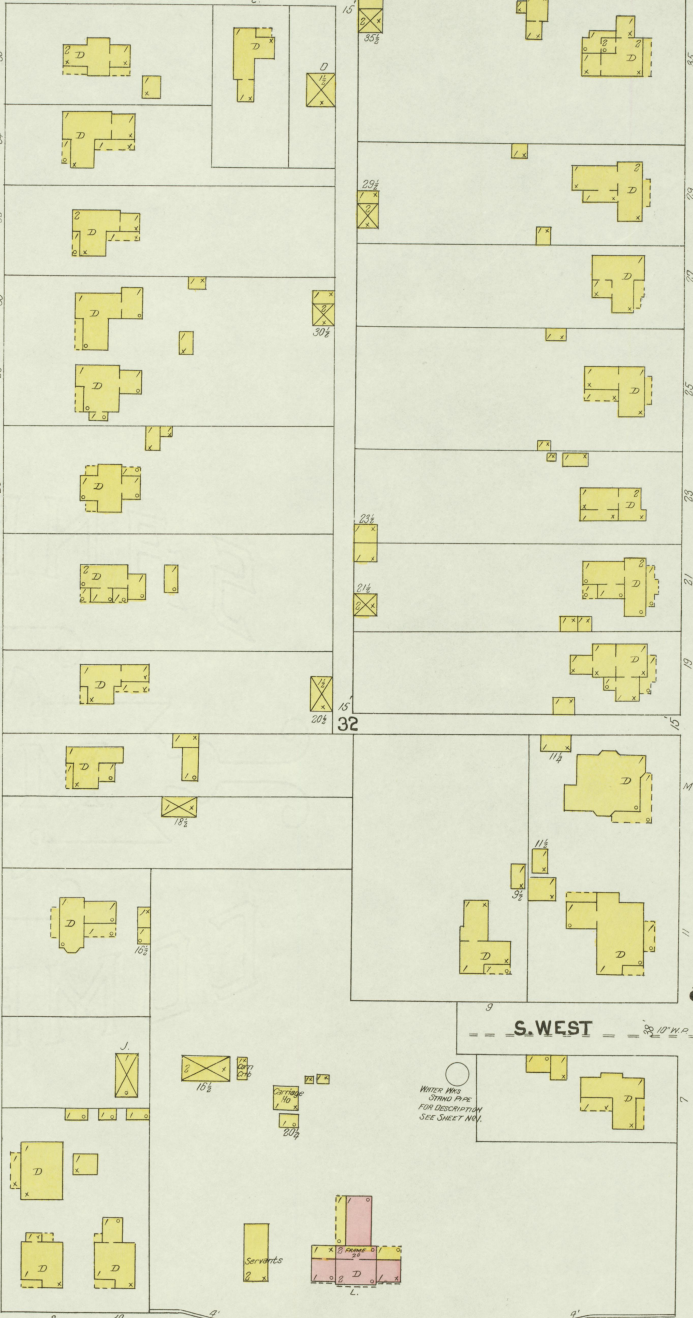
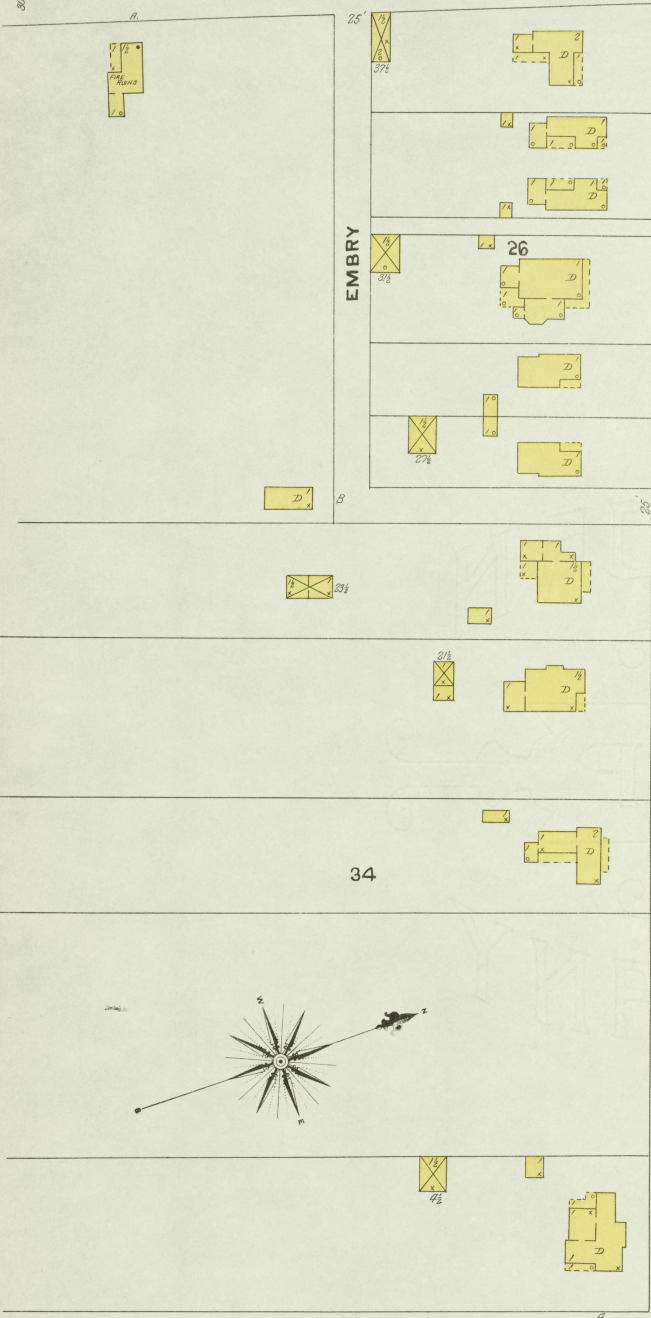


WIDE AND STRONG FIVE
FOR SECURITY SEE SHEET NW 1

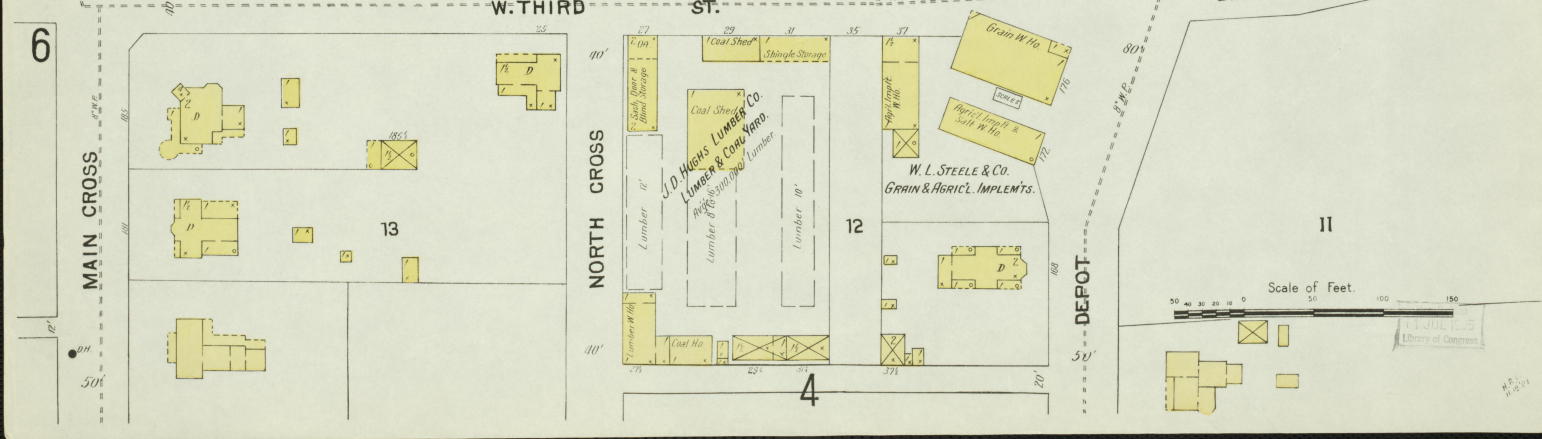
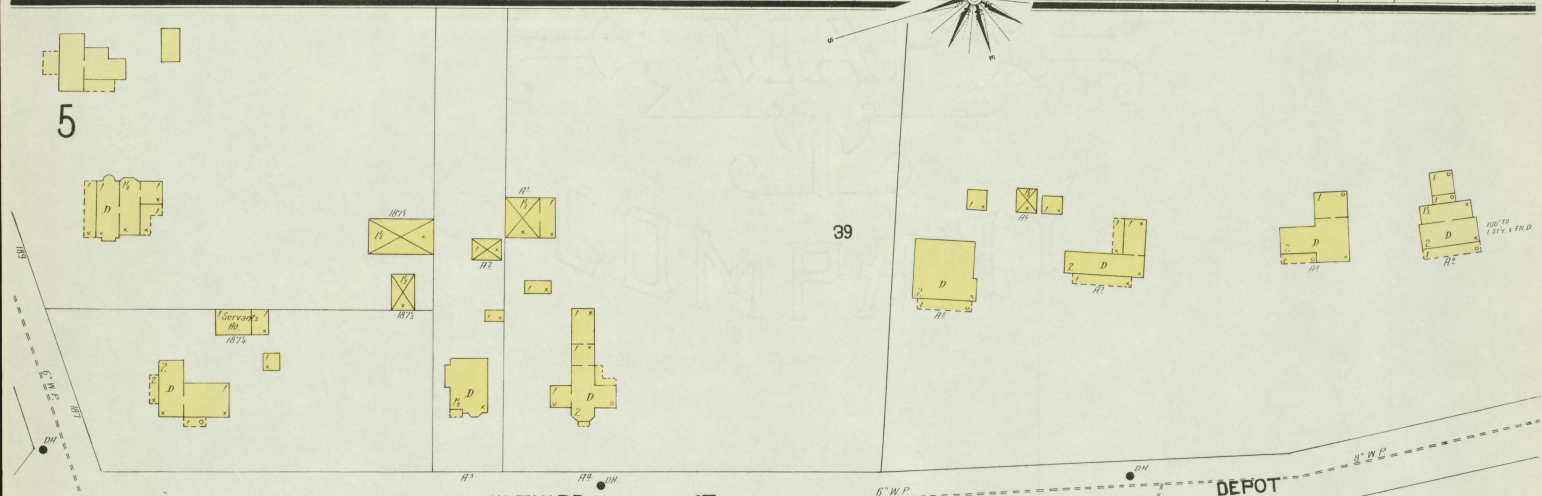
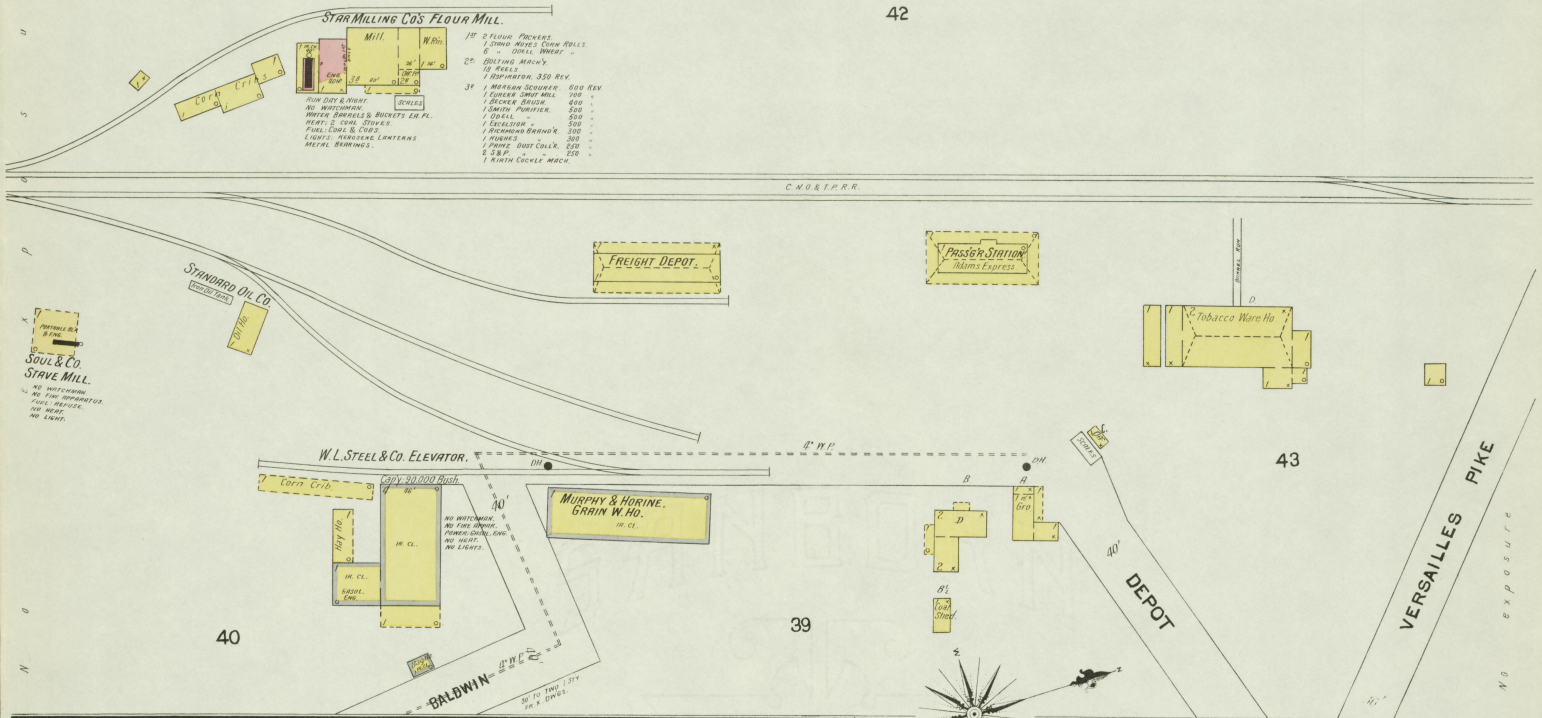
CHURCH

Map of
11 JUL 1925
Library of

20 TO No. D



42



N O E X P O S U R E

40

39

39

5

6

13

12

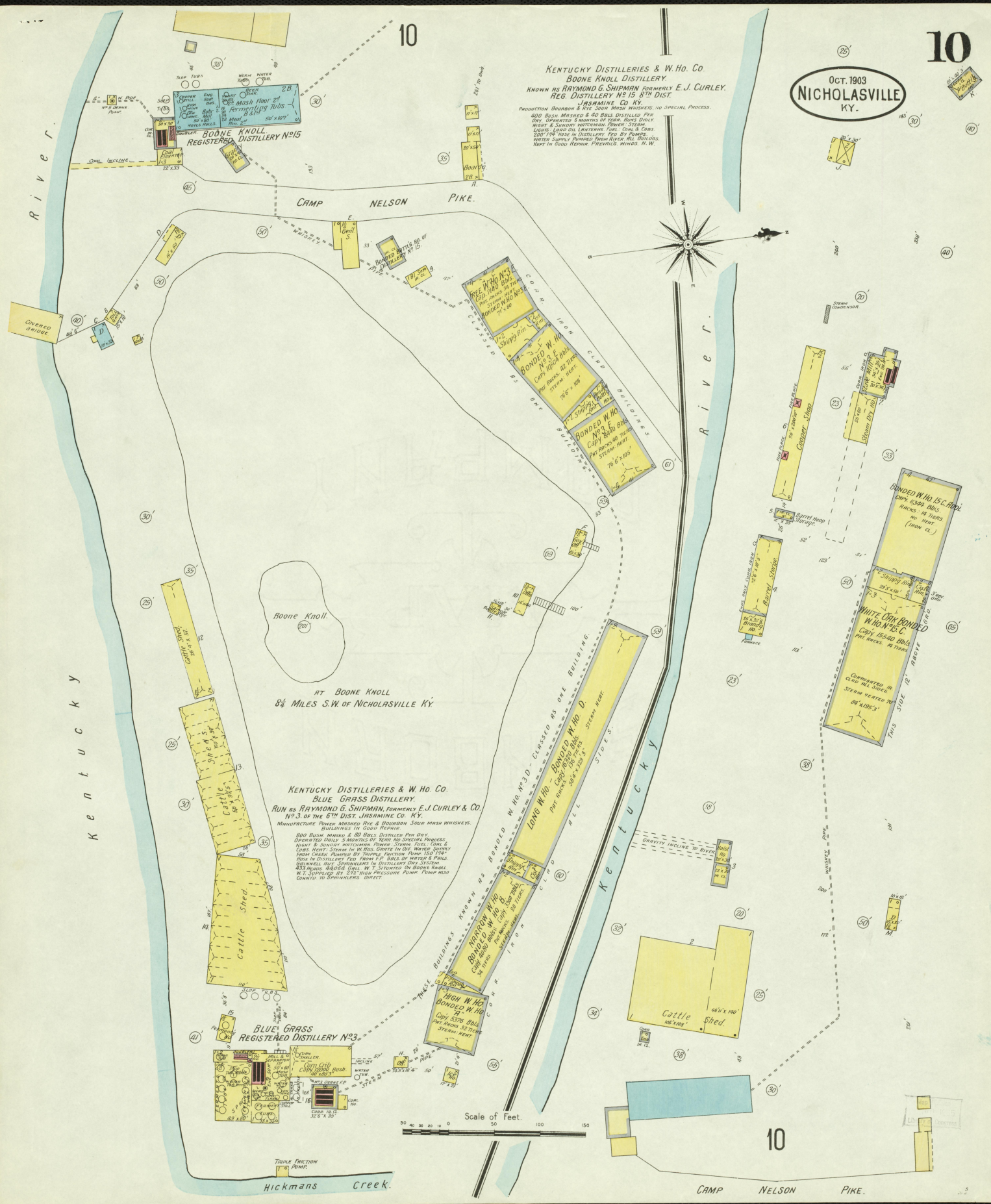
4

11

OCT. 1903
NICHOLASVILLE
KY.

KENTUCKY DISTILLERIES & W. HO. CO.
BOONE KNOLL DISTILLERY.
KNOWN AS RAYMOND G. SHIPMAN FORMERLY E. J. CURLEY.
REG. DISTILLERY NO. 15. 6TH DIST.
JASAMINE CO. KY.

PRODUCTION: BOURBON & RYE SOLE MASH WHISKEY; NO SPECIAL PROCESS.
800 BUSH MASHED & 80 BBL'S DISTILLED PER DAY. DISTILLED 5 MONTHS OF YEAR. RUNS DAILY MONDAY & SUNDAY. WATERMAN POWER. STEAM LIGHTS. LAND OIL LAMP. FUEL COAL & CORK. 2000 LBS. WOOD IN DISTILLERY. FED BY POWER. WATER SUPPLY PUMPED FROM RIVER. ALL BUILDINGS HEAT IN GOOD TEMPER. FRENCHVILLE, WINDS. N. W.



RIVER

10

CAMP NELSON PIKE.

BOONE KNOLL REGISTERED DISTILLERY NO. 15

AT BOONE KNOLL
8 1/4 MILES S.W. OF NICHOLASVILLE KY.

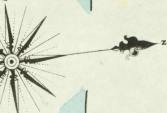
KENTUCKY DISTILLERIES & W. HO. CO.
BLUE GRASS REGISTERED DISTILLERY NO. 33.
RUN AS RAYMOND G. SHIPMAN FORMERLY E. J. CURLEY & CO.
NO. 3 OF THE 6TH DIST. JASAMINE CO. KY.

MANUFACTURE: FINEST MASHED RYE & BOURBON SOLE MASH WHISKEY.
BUILDINGS IN GOOD REPAIR.
800 BUSH MASHED & 80 BBL'S DISTILLED PER DAY. DISTILLED 5 MONTHS OF YEAR. NO SPECIAL PROCESS. MON & SUNDAY. WATERMAN POWER. STEAM LIGHTS. COAL. HEAT. STEAM IN W. HO'S. GENTS IN DIF. WATER SUPPLY FROM CREEK. PUMPED BY POWER. FACTORY. FUEL. COAL. HOSE IN DISTILLERY. FED FROM F.P. BLS BY WATER & PAILS. STEAMWELL. W. HO'S. SPRINGWELL IN DISTILLERY. DIST. 3/4 IN. 483 FEET. 44054 GALL. W. T. STORED IN BOONE KNOLL. W. T. SUPPLIES BY 217 HOSE. PUMPED FROM RIVER. PUMP HEAD CONNECTED TO SPRINGWELL. DIRECT.

BLUE GRASS REGISTERED DISTILLERY NO. 33

BONDED W.H.O.
BONDED W.H.O.
BONDED W.H.O.
BONDED W.H.O.
BONDED W.H.O.

BONDED W.H.O. 15 C.
WHITE OAK BONDED W.H.O. 15 C.
COMPLETED IN CLASS ALL SIDES. STEAM HEATED BY 841853.
THIS JUNE 1902. MADE BY G. J. CURLEY.



Scale of feet. 0 50 100 150

Hickmans Creek.

CAMP NELSON PIKE.

10